

# THE 'BLANIC' COLLECTION OF NYASALAND AND RHODESIA



**SPINK**

*WHERE HISTORY IS VALUED*

**13 APRIL 2021  
LONDON**







# THE 'BLANIC' COLLECTION OF NYASALAND AND RHODESIA

69 Southampton Row, Bloomsbury (visits are subject to government guidelines)  
London WC1B 4ET

tel +44 (0)20 7563 4000 fax +44 (0)20 7563 4066

Vat No: GB 791627108

Sale Details | Tuesday 13 April 2021 at 10.00 a.m.

When sending commission bids or making enquiries,  
this sale should be referred to as **ZOMBA - 21021**

Viewing of Lots | At Spink London (in line with government guidelines)  
Monday 12 April 2021 at 10.00 a.m. – 5.00 p.m.  
| Private viewing by appointment only

Live platform | **SPINK**  **LIVE**

---

## Your Specialists for this Sale



**Nick Startup**  
nstartup@spink.com  
+44 (0)20 7563 4073



**Joshua Barber**  
jbarber@spink.com  
+44 (0)20 7563 4080

### Bids

**Axel Kendrick**  
auctionteam@spink.com  
+44 (0)20 7563 4108/4103  
fax +44 (0)20 7563 4037

### Technical Issues

support@spink.com  
+44 (0)20 7563 4089

### Payment Enquiries

**Veronica Morris**  
creditcontrol@spink.com  
+44 (0)20 7563 4018

### VAT Enquiries

**John Winchcombe**  
jwinchcombe@spink.com  
+44 (0)20 7563 4101

## The Spink Environment Commitment: Paper from Sustainable Forests and Clean Ink

Spink has a long history of preserving not only collectables but our planet, too. We are proud to ensure that our policy of sustainability and conservation keeps up with Spink's growth, helping improve the environment for new generations of collectors.

We insist that our printers source all paper used in the production of Spink catalogues from FSC and/or PEFC suppliers and use non-hazardous inks. We also ask they hold the environmental standard ISO 14001.

Spink recycle all ecological material used on our premises and we encourage you to recycle your catalogue once you have finished with it.

Front Cover Illustrations: 67, 91, 295, 511 Back Cover Illustrations: 130

Inside Front Cover Illustration: 35 (detail) Inside Back Cover Illustration: 503 (detail)

**Group Chairman and CEO**  
Olivier D. Stocker

**Director**  
Tim Hirsch FRPSL

**Chief Financial Officer**  
Alison Bennet

**Head of EMEA**  
Mira Adusei-Poku  
mpoku@spink.com

**Specialists**

**Stamps**

Tim Hirsch FRPSL  
Iain Murphy  
David Parsons  
Nick Startup  
Neill Granger FRPSL  
Dominic Savastano  
Josh Barber  
Thomas Fell  
Ian Shapiro (Consultant)  
Guido Craveri (Consultant)  
Christopher Green  
George Yue (Consultant)  
Alan Ho

**Historical Documents**  
Thomas Fell  
Neill Granger FRPSL  
Ian Shapiro (Consultant)

**Books**  
Emma Howard  
Fabian Rigby  
Nik von Uexkull

**Client & Auction Management**

Geoff Anandappa (Consultant)  
Dora Szigeti  
Nik von Uexkull  
Jade Le Petit  
Axel Kendrick  
John Winchcombe  
Annie Sohail  
Samantha Lanevi  
Newton Tsang  
Katrina Chan

**PR & Marketing**

Rita Ariete  
Alzbeta Lanova  
Nerissa Douglas

**Chief Customer Officer**  
Rita Ariete

**Head of Americas**  
Charles J Blane  
cblane@spink.com

**Coins**

Kelvin Cheung  
Henrik Berndt  
Richard Bishop  
Tim Robson  
Gregory Edmund  
Barbara Mears  
Kin Choi Cheung  
Paul Pei Po Chow  
Joseph Lam  
Greg Cole (Consultant)

**Orders, Decorations & Medals**

Marcus Budgen  
Harry Blackett-Ord  
Greg Cole (Consultant)

**Special Commissions**  
Ian Copson  
Robert Wilde-Evans

**Finance**

Alison Bennet  
Sue Pui  
Marco Fiori  
Mina Bhagat  
Dennis Muriu  
Veronica Morris  
Nicholas Waring

**Representatives For Australia**

Michael R. Downey - mdowney@spink.com

**Representative For Canada**

Timothy J. Stewart - tstewart@spink.com

**Representative For Japan**

日本での弊社オークションへの出品・参加に関してのお問い合わせ

Alan Ho - japan@spink.com

**Representative For South Africa**

Andrew Kennedy - akennedy@spink.com

**Chief Operating Officer**  
Mira Adusei-Poku

**Head of Asia-Pacific**  
Sue Pui  
spui@spink.com

**Banknotes**

Kelvin Cheung  
Barnaby Faull  
Elaine Fung  
Arnas Savickas  
Paul Pei Po Chow  
Greg Cole (Consultant)

**Bonds & Shares**

Kelvin Cheung  
Mike Veissid (Consultant)  
Greg Cole (Consultant)

**Wine & Spirits**  
George Koutsakis

**IT & Administration**

Michael Lewis  
Iveta Gaalova  
Liz Cones  
Slawomir Kolsut  
Newton Tsang  
Jacqueline Wong

www.spink.com

@SpinkandSon

#Spink\_Auctions

Spink\_auctions

Spinkauctions

Spink\_auctions



**Spink UK**  
69 Southampton Row  
Bloomsbury  
London  
WC1B 4ET  
Email:  
conciierge@spink.com  
Tel: +44 (0)20 7563 4000  
Fax: +44 (0)20 7563 4066

**Spink USA**  
145 W. 57th St.  
18th Floor  
New York, NY  
10019  
Email:  
usa@spink.com  
Tel: +1 646 941 8664  
Fax: +1 646 941 8686

**Spink China**  
4/F and 5/F  
Hua Fu Commercial  
Building  
111 Queen's Road West  
Sheung Wan  
Hong Kong  
Email:  
china@spink.com  
Tel: +852 3952 3000  
Fax: +852 3952 3038

**Spink Asia**  
Registered at:  
50 Raffles Place  
#17-01 Singapore Land  
Tower  
Singapore 048623  
Email:  
singapore@spink.com

**Spink Switzerland**  
Via Livio 8  
6830 Chiasso  
Switzerland  
Email:  
switzerland@spink.com  
Tel: +41 91 911 62 00  
Fax: +41 91 922 20 52







## Extensions

Prospective buyers who wish to obtain an expert opinion on any lot (other than a mixed lot or lot containing undescribed stamps) are requested to notify Spink in writing not less than forty-eight hours before the time fixed for the commencement of the first session of the sale. If accepted by Spink, such request shall have the same effect as notice of an intention to question the authenticity of the lot for the purposes of Condition 3.4 of our Terms and Conditions for Buyers.

Notice of a request for an expert opinion must give the reason why such is required and specify the identity of the expert which will be subject to the agreement of Spink. All lots for which Certificates of Authenticity are desired must be submitted by Spink to the Expert Committee for choice.

**Buyers are reminded that any lot(s) purchased “on extension” are subject to payment in accordance with our normal Terms & Conditions of Business. Settlement of any lots on extension should be made at the time of invoice payment. Overdue accounts are subject to interest charges.**

Extensions requested on account of condition will not be accepted for expert opinions. Any Lot described as having faults or defects may not be returned should a certificate cite other faults or defects not included in the catalogue description.

Should Spink accept a request for an extension under the foregoing provisions of this paragraph, the fact may be stated by the Auctioneer from the rostrum prior to the sale of the lot.

It should be noted that any stamp accompanied by a Certificate of Authenticity is sold on the basis of that Certificate only and not on the basis of any other. No request for an extension will be accepted on such a stamp and the return of such a stamp will not be accepted.

## Notes Concerning Descriptions

**GUM:** Original gum should be expected on unused stamps where appropriate, unless stated otherwise in the description:

mint	unused with original gum showing slight disturbance caused by previous hinge, which may be present in part or entirely removed
part original gum	unused with original gum significantly disturbed or heavily hinged
unmounted mint	original gum as issued
unused	without gum

**COVERS:** Should be expected to have minor nicks and tears usually from opening. Folded letters or covers normally have one or two file folds. These are not described unless of an exceptional nature and are not grounds for return.

entire letter	complete as sent with comments still attached to the outer address portion
entire	the outer portion of a folded letter but without contents
cover	an envelope

## Symbols and Abbreviations

⊛	unmounted mint	d.s.	datestamp
★	unused	h.s.	handstamp
○	used	Ⓐ	air mail
⊞	block of four	Ⓢ	specimen
⊞	block larger than four	Ⓒ	cancelled
☒	used on cover, entire letter, etc.	Ⓔ	essay
△	on piece	Ⓟ	proof
var.	variety, varieties	F	forgery
cat.	catalogue, catalogue value	R	reprint
c.d.s.	circular datestamp		

## References

Catalogue values and numbers are those taken from the latest available edition.

The use of Gibbons Specialised catalogues in Great Britain sales is clearly indicated. Where other catalogues are used they are mentioned by name.

**Buyers are reminded that payment must be made within seven days from the date of sale (condition 5.4.1), and interest will be added for overdue accounts (condition 5.10.1.1).**

**Please note charges for credit card payments (condition 5.4.3(iii)).**

**Buyers are reminded that if they default on a successful bid that details relating to such default may be shared with other auction houses and live bidding platforms (condition 5.11).**



**Note:** All lots are subject to the Terms and Conditions for Buyers printed at the back of this catalogue and published on [www.spink.com](http://www.spink.com).

The estimated selling price of each lot is printed below the lot description and does not include the Buyer's Premium.

Bidders should bear in mind that estimates are prepared well in advance of the sale and are not definitive. They are subject to revision.

All buyers must read the notes concerning requests for Extensions printed on page 4 of this catalogue.

The Terms of that notice must be complied with fully under all circumstances.

Please note that you can bid on Spink Live in real time through [www.spink.com](http://www.spink.com) and via a SpinkLive app available for download from the App Store. Bidding via Spink Live is free of charge.

**TUESDAY 13 APRIL 2021**

**Commencing at 10.00 a.m.**

**NYASALAND**

**1891-95 STAMPS OF RHODESIA OVERPRINTED "B.C.A."**

Specimens



Ex 1

1 ©

1d., 2d., 6d. deep blue, 8d. red and ultramarine, 1/-, 2/-, 2/6d. grey-purple, 3/-, 4/-, 5/-, 10/- and £1, each perforated "SPECIMEN" (Type B1), seven including the £1 with small part gum, the 8d. with perfs. cut off at right though all of fresh and fine appearance. Rare. Photo


£500-600

# SPINK LIVE

Spink Live is now running on a new and improved bidding platform


Accessible online through [www.spink.com](http://www.spink.com) and also available iOS and Android devices

Bidding on 'Spink Live' remains free of charge



Download on the  
App Store

GET IT ON  
Google Play



Click to Login / Register

Tick your Interests

Scroll the Lots

Slide to Bid

MY ACCOUNT

- Login
- Consign An Item
- Watched Lots
- My Bids

- ☒ Medals
- ☒ Stamps
- ☐ Watches
- ☒ Whiskies & Spirits
- ☒ Wines

LOT 3: SEAL, 5 songs, including all

LOT 4: RANDY CRAWFORD & JOE SAMPLE, 4

LOT 2010 - CURRENT B

Slide to bid €

CURRENT HISTORY

For any enquiries or further assistance please contact:

Tel: +44 (0)20 7563 4112 | Email: [spinklive@spink.com](mailto:spinklive@spink.com)

**SPINK**

WHERE HISTORY IS VALUED



Nyasaland, 1891-95 Stamps of Rhodesia Overprinted "B.C.A." - *contd.*

Cancelled



— 2 —

2 ©

1d., 2d., 4d., 6d. ultramarine, 8d. red and ultramarine, 1/-, 2/-, 2/6d. lilac, 3/-, 4/-, 5/- and 1893 3/- on 4/-, all hinged to two pieces cut from a receiving postal authority archive and crossed by large "CANCELLED" handstamps (41x6mm.), fine. Unique. Photo

£500-600



**Unused**

- 3 ★ 1d. (9 including a block of six), 2d. (5 including a block of four), 4d., 6d. (both), 8d. rose-lake and ultramarine, 8d. red and ultramarine (4), 1/- (4), 2/-, 2/6d. grey-purple (2), 2/6d. lilac, 3/-, 4/-, 5/- (2) and 10/- (2), all with varying amounts of original gum, fine. S.G. 1-13, £1746 £400-500
- 4 ★ 1d. black lower left corner block of twenty (5x4) with large part papermaker's watermark, unused with part to full original gum, the odd minor stain (mainly on reverse) barely affecting fine appearance. S.G. 1, £240+ £80-100



5



6



7

- 5 ★ £1 deep blue, unused with part original gum, fine. S.G. 14, £1,300. Photo £350-450
- 6 ★ £2 rose-red, unused with large part original gum, good centring and of lovely rich colour. A very fine example. B.P.A. Certificate (1989). S.G. 15, £1,400. Photo £400-500
- 7 ★ £2 rose-red, unused with part original gum, fine. S.G. 15, £1,400. Photo £300-400



8



9



10



11

- 8 ★ £5 sage-green, unused with part original gum which has been disturbed at foot, well-centred and of fine appearance. S.G. 16, £2,000. Photo £300-400
- 9 ★ £5 sage-green, unused and regummed, fine appearance. S.G. 16, £2,000. Photo £250-300
- 10 ★ £10 brown, unused with re-distributed gum, fine. S.G. 17, £4,500. Photo £500-600
- 11 ★ £10 brown, unused with re-distributed gum, fine. B.P.A. Certificate (1974). S.G. 17, £4,500. Photo £500-600

**Used**

- 12 ○ 1d., 2d. (2), 4d. (3), 6d. ultramarine, 6d. deep blue (4, one on small piece), 8d. (both), 1/- (2), 2/- (2), 2/6d. (both), 3/- (3, one with fiscal cancel), 4/- and 5/-, generally fine. S.G. 1-12, £1,000 £250-300



Nyasaland, 1891-95 Stamps of Rhodesia Overprinted "B.C.A.", Used - *contd.*



13

13 ○

1d., 2d., 4d., 6d. ultramarine, 8d. rose-lake and ultramarine, 1/-, 2/-, 3/-, 4/- and 5/-, all affixed to piece of paper and cancelled by favour with fine "872" barred oval and showing superb "ABERCORN/B.C.A." c.d.s. dated 31 January 1899. Photo

£250-300





14



15



16



17



18

- |      |  |              |
|------|--|--------------|
| 14 ○ | £1 deep blue with small part papermaker's watermark, centrally cancelled by "TSHIROMO/B.C.A." double-ring d.s., fine. S.G. 14, £700. Photo | £200-250     |
| 15 ○ | £2 rose-red with central "BLANTYRE/B.C.A." c.d.s., fine. S.G. 15, £1,600. Photo  | £400-500     |
| 16 ○ | £5 sage-green, neatly cancelled by two part strikes of Zomba c.d.s., well-centred, fine. S.G. 16, unpriced. Photo                          | £600-800     |
| 17 ○ | £5 sage-green cancelled by favour with "B" in circle of bars, fairly well-centred, fine. PFSA Certificate (1978). S.G. 16, unpriced. Photo | £500-600     |
| 18 ○ | £10 brown cancelled by favour with part "B" in circle of bars and Blantyre c.d.s., fine. PFSA Certificate (1978). S.G. 17, £6,500. Photo   | £1,800-2,200 |

#### 2d. Bisect

*Owing to a shortage of 1d. stamps, bisects of the 2d. were permitted for a short time. Use of these bisected stamps was confined to Blantyre, Chiromo and Zomba. Probably no more than 50 were used. Legitimate examples should be dated July or October 1895*



19

- |      |   |              |
|------|---|--------------|
| 19 △ | 2d. sea-green and vermillion, <b>bisected vertically</b> and clearly tied by single-ring datestamp (date unclear) on wrapper front (small piece of front missing at upper left) from Zomba to the Imperial British East Africa Co., Mombasa. A rare and important franking exemplifying the provisional use of bisected stamps. B.P.A. Certificate (1965). S.G. 2a, £7,500. Photo | £2,000-2,500 |
|------|---|--------------|

Nyasaland - *contd.*

## 1892-93 PROVISIONALS

Cancelled



20

- 20 © 4/- on 5/- and 1895 1d. on 2d. hinged to piece of paper cut from a receiving postal authority archive, both crossed by large "CANCELLED" handstamp (41x6mm.), fine. Unique. S.G. 19-20. Photo £150-200
- Unused**
- 21 ★ 3/- on 4/- and 4/- on 5/-, both unused with part original gum, the latter showing part papermaker's watermark, fine. S.G. 18-19, £485 £120-150  
*Note: Only 1,380 of the 3/- on 4/- provisional were printed.*
- 22 3/- on 4/- and 4/- on 5/- (centred to lower left), unused with part original gum; also 3/- on 4/- with fiscal cancel and 4/- on 5/- used (5). Mostly fine. S.G. 18-19, £1,035 £200-250
- 23 ★ 3/- on 4/- unused with part original gum, fairly well-centred, fine. S.G. 18, £375 £100-120



**The Royal Philatelic Society London**

We are pleased to receive proposals for membership of the Society which is through election.  
 If you are interested in membership, please contact us at [secretary@rpsl.org.uk](mailto:secretary@rpsl.org.uk)  
 If you have no proposer or seconder, please contact us for further information.

Tel: 00 44 (0)20 7486 1044 | [www.rpsl.org.uk](http://www.rpsl.org.uk)

The world's oldest and most prestigious philatelic society, established 1869, with over 2,000 members in more than 70 countries.  
 \*\*\*

Extensive premises in London's West End house the Society's superlative library, plus Museum and Archive, and provide first-class meeting facilities.  
 \*\*\*

The Society's Online Catalogue provides access to over three-quarters of a million philatelic indexes to members world-wide.  
 \*\*\*

A fascinating programme of displays and meetings throughout the year, supplemented by regional meetings and gatherings at major international events.  
 \*\*\*

The Society publishes ten times a year its own journal, *The London Philatelist*, containing articles of outstanding philatelic research, in addition to publishing major philatelic works.  
 \*\*\*

We are honoured to have Her Majesty Queen Elizabeth II as our Royal Patron



## 1895 PROVISIONAL

Early in 1895, due to a perceived shortage of 1d. stamps, a provisional surcharge was proposed. It was hoped the surcharge could be carried out at the Blantyre Mission Press and an unsuccessful trial was made. This single trial sheet of 60 stamps was surcharged twice. A further 5,940 stamps (99 sheets) were sent to Cape Town for surcharging.

Owing to the inability to surcharge stamps locally, recourse was made to the bisecting of 2d. stamps pending the return of the surcharged stamps from Cape Town.

**Blantyre Trial Printing - Surcharge Double**

Note: All stamps from the Blantyre trial sheet are centred to top. This should be considered normal. The trial surcharge is without stop after "PENNY"



24

24 ★

"ONE PENNY" on 2d. sea-green and vermilion, a very fine and fresh mint example. S.G. Cat. £650. Photo

£200-250



25

25 △

"ONE PENNY" on 2d. sea-green and vermilion, on small piece and almost certainly cancelled by favour with part barred circle and Blantyre c.d.s. dated 7 December 96, fine. Photo

£250-300

**Cape Town Printing**

Two settings of the Cape Town printing have been identified. Setting I - 3x10: [16 + 46] Dropped "NY" in "PENNY", and [15 + 46] Broken serif top left of "E" in "penny" Setting II - 2 x 10 Position unknown, dropped "Y" in "PENNY"

26

"ONE PENNY" on 2d. sea-green and vermilion mint (2, one with surcharge misplaced to left) and used pair (cancelled-to-order) and single, fine. S.G. 20, £300

£80-100

Nyasaland, 1895 Provisional - *contd.*

**Double Surcharge**

It is probable that stamps with double surcharge exist from three sheets. Unused examples are known from Settings I and II; used examples are only known from Setting II



27

27 ★

“ONE PENNY” on 2d. sea-green and vermillion with “ov” of papermaker’s watermark, unused with large part original gum, fine. Very rare. B.P.A. Certificate (1989). S.G. 20a, £11,000. Photo

£4,000-5,000

PROVENANCE:

Dr. Graeme McFarlane, September 1989



28

28 ○

“ONE PENNY” on 2d. sea-green and vermillion with part papermaker’s watermark, cancelled by large part Blantyre c.d.s. for April 20th, fine. Rare. R.P.S. Certificate (1944). S.G. 20a, £8000. Photo

£2,500-3,000



## 1895 ARMS ISSUE

### Specimens

- 29 ⑤ ½d, to £1 set of nine, each overprinted "SPECIMEN" (Type D12), all with large part original gum, the £1 centred to upper left, fine. S.G. 21s-29s, £450 £120-150



30



31

- 30 ⑤ £10 black and orange-vermilion handstamped "SPECIMEN" (Type NY1), large part original gum, fresh and fine. S.G. 30s. Photo £400-500
- 31 ⑤ £25 black and blue-green handstamped "SPECIMEN" (Type NY1), large part original gum, lovely strong fresh colour, fine. S.G. 31s. Photo £1,000-1,200

### Unused

- 32 ★ 1d. (2), 2d., 4d., 6d. (2), 1/-, 2/6d. (2, one faded), 3/- and 5/- (2), three low values with hinge remnants, the faded 2/6d. and one 5/- without gum, otherwise fine mint. S.G. 21-28, £2,150 £300-400



33

- 33 ★ £1 black and yellow-orange, unused with part original gum (heavy hinge remnant), well-centred and of good colour, fine. S.G. 29, £1,400. Photo £300-400



34

- 34 ★ £10 black and orange-vermilion, unused with large part original gum, fairly well-centred, excellent colour and freshness, fine. Rare. B.P.A. Certificate (1976). S.G. 30, £8,000. Photo £3,000-4,000



Nyasaland, 1895 Arms Issue, Unused - *contd.*



35

35 ★

£25 black and blue-green, unused with part original gum, good centring for this stamp, lovely colour, fresh and fine. An important high denomination rarity. R.P.S. Certificate (1976). S.G. 31, £16,000. Photo

£6,000-8,000

PROVENANCE:

Richard Tompkins, November 2006

**Used**

36 ○

1d. pair, 2d. (3 including a pair), 4d., 6d. (2), 1/-, 2/6d., 3/- and 5/- (2, one with doubtful cancel), plus 1896 1d. (2), 2d., 4d., 6d., 1/- and 2/6d. (3); generally fine. Cat. £1,000+

£250-300



Ex 37



38

37 ○

3/-, £25 (excellent colour) and 1896 3/-, all fiscally cancelled, the first 3/- a little stained on reverse, otherwise fine. Photo for £25

£500-600

38 ○

£1 black and yellow-orange, neatly cancelled by part Tshiromo? double-ring d.s., fine. S.G. 29, £650. Photo

£200-250

**Forgeries**

*Note: These forgeries were all prepared on paper with a toned to buff appearance as opposed to the white highly surfaced paper upon which the genuine stamps were printed. These forgeries, which were probably prepared before 1925, have been described in full by Robson Lowe in his article "Nyasaland. A comment on the 1895 Forgeries" published in "The Philatelist" Vol. 39 No. 3, December 1972, pp. 72-73*

39 F

2/6d. and 5/- (marginal) "unused" pairs of the photo-litho forgeries, both gummed, fine

£120-150



40



41

- |      |   |          |
|------|---|----------|
| 40 F | £1 black and orange-yellow “unused” photo-litho forgery, some light staining on reverse otherwise fine. Photo | £80-100  |
| 41 F | £10 black and orange-vermilion “unused” photo-litho forgery, fine. Photo                                      | £120-150 |

## 1896 ARMS ISSUE

### Specimens



——— Ex 42 ———



——— Ex 43 ———



- |      |  |          |
|------|--|----------|
| 42 ☉ | 1d. to £25 set of eleven, each overprinted “SPECIMEN” (Type D12), fine mint. S.G. 32s-42s, £1,200. Photo for £10 and £25 | £400-500 |
| 43 ☉ | 2/6d. to £25 each overprinted “SPECIMEN” (Type D12), fine mint. S.G. 37s-42s. Photo for £10 and £25                      | £250-300 |



44

- |      |   |          |
|------|---|----------|
| 44 ☉ | £25 black and green overprinted “SPECIMEN” (Type D12), well-centred, fine mint. S.G. 82a, £450. Photo | £120-150 |
|------|---|----------|



**Nyasaland, 1895 Arms Issue - *contd.***

**Unused**

- |      |   |          |
|------|---|----------|
| 45 ★ | 1d., 2d. (2), 4d. (2), 6d., 1/-, 2/6d., 3/- and 5/-, all unused with large part original gum; the 1d. with hinge remnants and the 1/- with some small light stains on reverse, otherwise fine. S.G. 32-39, £866 | £200-250 |
| 46 ★ | 2/6d., 3/- and 5/-, all unused with large part original gum, the 5/- with some firm's handstamps on reverse; fine. S.G. 37-39, £750   | £180-220 |



47

- |      |  |          |
|------|--|----------|
| 47 ★ | £1 black and blue, unused with part original gum, fine. S.G. 40, £1,400. Photo | £350-450 |
|------|--|----------|



48

- |      |  |              |
|------|--|--------------|
| 48 ★ | £10 black and orange, fresh unused with part to large part original gum. A fine example of this very rare stamp. S.G. 41, £11,000. Photo | £4,000-5,000 |
|------|--|--------------|

A Fine Example of This Exceptionally Rare High Value



49

49 ★

£25 black and green, unused with large part original gum, fairly well-centred and of lovely vibrant colour. A very fine example of this exceptionally rare and desirable high value denomination. S.G. 42, £26,000. Photo

£10,000-12,000



Nyasaland - *contd.*

## 1897-1900 ARMS ISSUE

### 1d. Imperforate Trial Plate Proofs on unwatermarked paper

*These trial proofs were printed from specially prepared sheets comprising six impressions in a horizontal row*



50



51

- |      |   |          |
|------|---|----------|
| 50 ⑤ | Black and yellow-green with 2mm. margin at top, fine. Photo   | £150-180 |
| 51 ⑤ | Black and carmine with 2mm. margin at top, gummed, adopted for the 4d. (and 4/-) value, fine. Photo | £150-180 |

### 1d. Imperforate Colour Trials on gummed watermarked paper

*The black vignette colour may vary from a deep black to a grey-black shade.*



52



53

- |      |  |          |
|------|--|----------|
| 52 ⑤ | Black and bistre, fine. Photo                              | £150-180 |
| 53 ⑤ | Black and green, the colour of the issued 6d., fine. Photo | £150-180 |



54



55



56

- |      |   |          |
|------|---|----------|
| 54 ⑤ | Greenish black and olive, fine. Photo   | £150-180 |
| 55 ⑤ | Greenish black and dull purple, the colour of the issued 1/-, fine. Photo   | £150-180 |
| 56 ⑤ | Purple and dull ultramarine with margin at left, fine. Photo  | £150-180 |
| 57 ⑤ | Black and dull purple (corner crease), greenish black and red-brown (creased) and in dull purple and carmine with small part margin at left (thinned) | £150-180 |

**2/6d. Imperforate Colour Trial on gummed unwatermarked paper**



58

58 ②

Black and brown, fine. Photo

£200-250



59



60



61

**4/- Imperforate Colour Trial on gummed watermarked paper**

59 ⑤

Grey-black and carmine, the issued colour; light gum creases and small thin at top. Photo

£100-120

**£1 Imperforate Colour Trial on gummed watermarked paper**

60 ②

Black and dull purple, the issued colour; some light creases, otherwise fine. Photo

£200-250

61 ②

Black and dull purple with margin at top showing Jubilee line; some light creases, otherwise fine. Photo

£200-250

**Specimens**

62 ⑤

1d. to £10 plus 1901 CA 1d., 4d. and 6d., each overprinted "SPECIMEN" (Type D12), two low values with hinge remnants, 4/- with colour offsetting, 5/- with small thin and £1 with light vertical crease, the remainder fine. S.G. 43s-52s, 57ds-58s, £815

£150-180



63

63 ⑤

£10 black and yellow horizontal pair affixed to fragment, both handstamped "SPECIMEN" (18x3mm.) in seriffed capitals and additionally cancelled by two part strikes of a "ZOMBA/B.C.A." squared-circle d.s., fresh and fine. Unique. S.G. 52s. Photo

£1,000-1,200



**Nyasaland, 1897-1900 Arms Issue - *contd.***

**Unused**

- |      |  |          |
|------|--|----------|
| 64 ★ | 1d. to £1 set of ten and 1901 CA 1d., 4d. and 6d., the 4/- marginal with plate number, a few hinge remnants, otherwise fine mint. S.G. 43-51, 57d-58, £1,435                               | £400-500 |
| 65 ★ | 1d. to £1 set of ten and 1901 CA 1d., 4d. and 6d. (2); the 6d. a fraction toned, the 1/- with light crease and the £1 with hinge remnants, otherwise fine mint. S.G. 43-51, 57d-58, £1,452 | £350-450 |



66

- |       |  |          |
|-------|--|----------|
| 66 ⊛田 | 1d. black and ultramarine block of four with margin at top, variety <b>watermark inverted</b> , fresh and fine unmounted mint. S.G. 43a, £680. Photo | £350-450 |
|-------|--|----------|



67

- |      |  |              |
|------|--|--------------|
| 67 ★ | £10 black and yellow, unused with large part original gum and good strong colour. An exceptionally fine example of this rare stamp. Brandon Certificate (1986). S.G. 52, £9,000. Photo | £5,000-6,000 |
|------|--|--------------|

PROVENANCE:  
Richard Tompkins, November 2006

Used



Ex 68



Ex 69



70

- 68 ○ 1d. to £1 set of ten with additional 1d. and 3/- (2, both washed) and 1901 CA 1d. (2), 4d. (2) and 6d. (2), generally fine. S.G. 43-51, 57d-58, £1,882. Photo for £1 £300-400
- 69 ○ 2/6d., 10/- and £1, all neatly cancelled by squared-circle datestamps, fine. S.G. 48, 50a, 51; £705. Photo for £1 £200-250
- 70 ○ £1 black and dull purple on fragment cancelled by "BLANTYRE/B.C.A." squared-circle datestamp for 16 August 1898, fine. S.G. 51, £300. Photo £80-100



71

- 71 ○ £10 black and yellow centrally cancelled by "FORT JOHNSTON/B.C.A." c.d.s. for 11 December 1897, very fine. B.P.A. Certificate (1992). S.G. 52, £2,750. Photo £800-1,000



72

- 72 ○ £10 black and yellow centrally cancelled by "BLANTYRE/B.C.A." c.d.s. for 3 February 1898, very fine. S.G. 52, £2,750. Photo £800-1,000



Nyasaland - *contd.*

## 1898 "ONE/PENNY" ON 3/- PROVISIONAL

There was a temporary shortage of 1d. stamps for internal postage early in 1898 due to the loss of a shipment of stamps which left Chinde on 25 January. As an interim measure 33,600 examples of the 3/- were overprinted locally "ONE PENNY". A total of 33,420 stamps were sold; nevertheless examples are very rare on cover. Many examples are found with pink fibres on reverse - the sheets being interleaved with pink blotting paper.

### Specimen



73

73 ©

A single on small piece of paper handstamped "SPECIMEN" (40x6mm.) in sans-serif capitals, fine. Unique. S.G. 53. Photo

£1,500-1,800

### Issued Stamps

74

A pair and singles (3) mint and a pair and singles (3, all a little washed) used. S.G. 53, £195

£60-80

### Varieties



75

75 ★

A single, [38], variety "PNNEY" for "PENNY", usual pink fibres on reverse, fine mint. Very rare. Holcombe Certificate (1989). S.G. 53a, £10,000. Photo

£3,500-4,500

*Note: The error was corrected early in the printing run. The Holcombe certificate states that it is from [47] which is incorrect according to Bryan de Robeck in his book "The 1898 Provisionals of British Central Africa".*

PROVENANCE:

Richard Tompkins, November 2006



76

76 ○

A strip of three, [37-39], the centre stamp with variety “PNNEY” for “PENNY”, cancelled by favour with “FORT ANDERSON/B.C.A.” c.d.s. for 1 January 1899, fine. Very rare. S.G. 53a, £7,500+. Photo

£2,500-3,000

PROVENANCE:

Dr. Graeme McFarlane, September 1989



77

77 ○

A vertical pair, the upper stamp with variety “PENN” (with albino “y”), cancelled by favour with “FORT ANDERSON/B.C.A.” c.d.s. for 1 January 1899, fine. Rare. B.P.A. Certificate (1971). S.G. 53b, £4,500. Photo

£1,500-1,800

PROVENANCE:

Dr. Graeme McFarlane, September 1989



78

78 ○

A single with variety “PENN” (with albino “y”), cancelled by favour with “FORT ANDERSON/B.C.A.” c.d.s. for 1 January 1899, fine. Rare. S.G. 53b, £4,500. Photo

£1,500-1,800



Nyasaland, 1898 "ONE/PENNY" on 3/- Provisional - *contd.*



79



80

79 ★

A horizontal pair with variety **surcharge double** (widely spaced), usual pink fibres on reverse, fine mint. S.G. 53c, £1,500. Photo

£600-800

*Note: Probably at least three sheets exist with surcharge double:-  
Double overlapping - equal intensity;  
Double overlapping - one impression stronger than the other;  
Double wide - almost equal intensity.*

80 ★

A single with margin at foot, variety **surcharge double** (widely spaced), usual pink fibres on reverse, fine mint. S.G. 53c, £750. Photo

£250-300

## 1898 PROVISIONAL "CHEQUE" STAMP ISSUE

Setting I, Imperforate with Postmaster's initials



81

81 ☉

1d. vermilion and grey-blue with initials "JTG" on reverse, and 1898 (June) perf. 12 1d. vermilion and deep ultramarine, Setting II, both handstamped "SPECIMEN" (18x3mm.) in seriffed capitals and affixed to a single piece; some minor tone spotting, otherwise fine. Unique. S.G. 54, 57a. Photo

£12,000-15,000

PROVENANCE:  
Spink auction, 2011

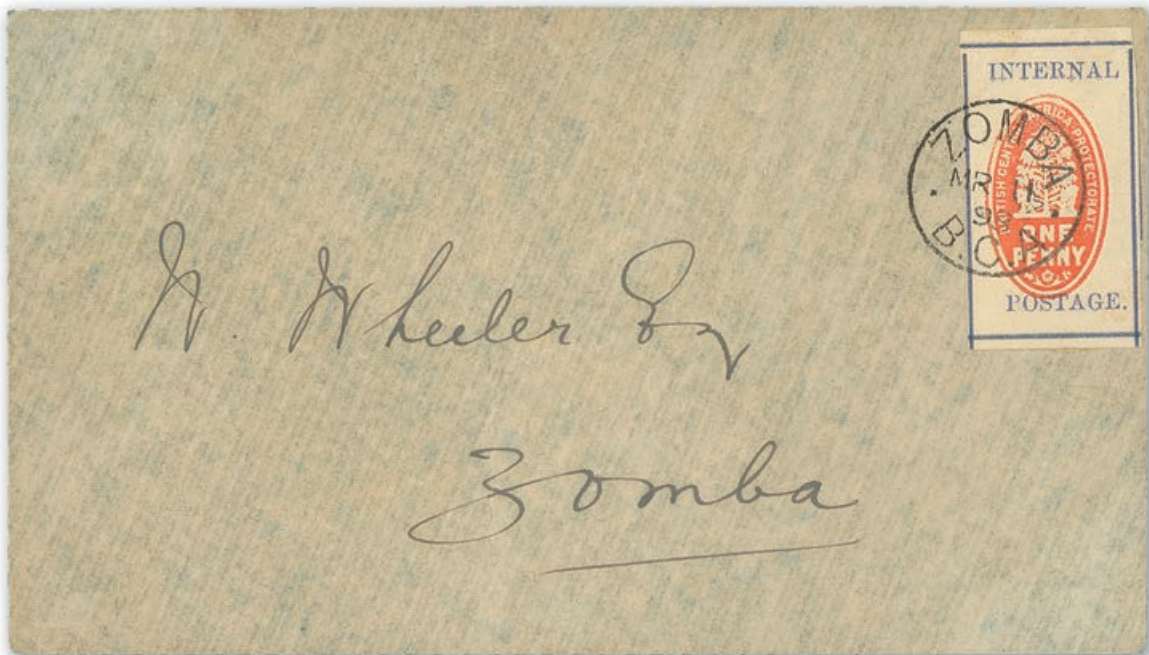


82



83

- 82 ○ 1d. vermilion and grey-blue with initials "J.T.G." on reverse, neatly cancelled by "ZOMBA/B.C.A." c.d.s. for 12 March 1898; frame-line shaved at upper right, otherwise fine. S.G. 54, £1,100. Photo £250-300
- 83 △ 1d. vermilion and grey-blue with initials "J.G." on reverse, close to good margins, cancelled on piece by "ZOMBA/B.C.A." c.d.s. for 11 March 1898, fine. S.G. 54, £1,100. Photo £300-400

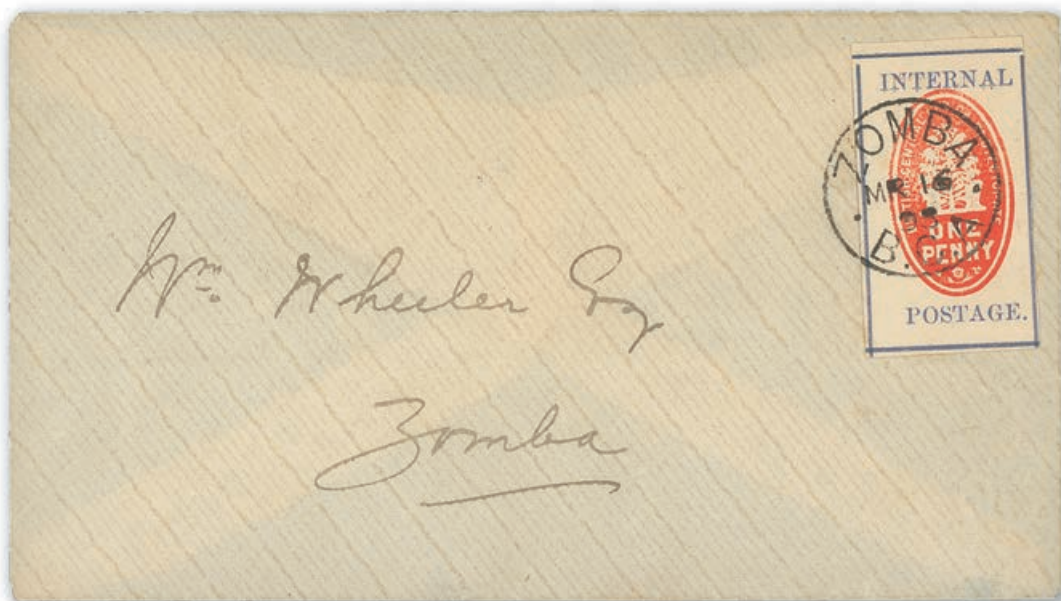


84

- 84 ☒ 1d. vermilion and grey-blue initialled "J.G." on reverse, neatly tied by "ZOMBA/B.C.A." c.d.s. on locally addressed 1898 (11 Mar.) envelope on day of issue, fine. S.G. 54. Photo £600-800
- PROVENANCE:  
Richard Tompkins, November 2006



Nyasaland, 1898 Provisional "Cheque" Stamp Issue,  
Setting I, Imperforate with Postmaster's initials - *contd.*

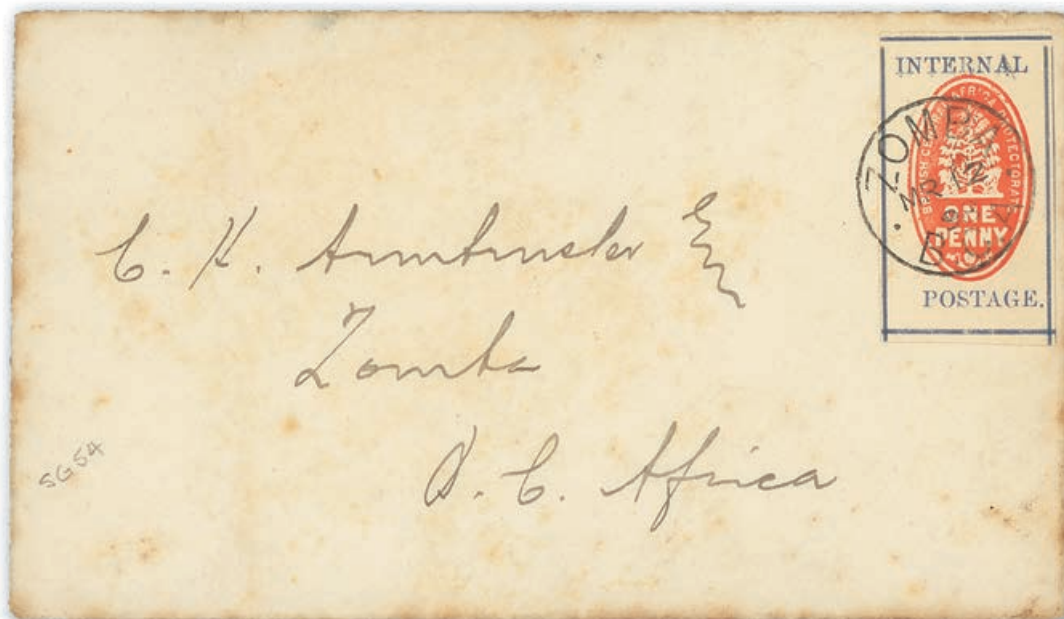


85

85 ☒

1d. vermilion and grey-blue initialled "JTG" on reverse, neatly tied by "ZOMBA/B.C.A." c.d.s. on locally addressed 1898 (16 Mar.) envelope, fine. S.G. 54. Photo

£600-800

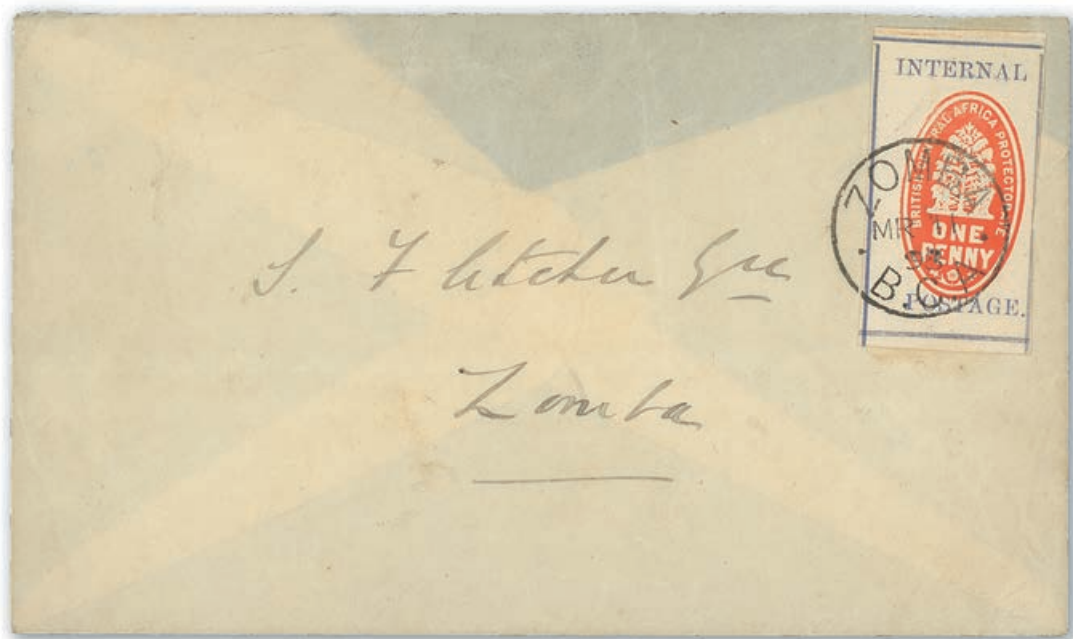


86

86 ☒

1d. vermilion and grey-blue initialled "JTG" on reverse, neatly tied by "ZOMBA/B.C.A." c.d.s. on locally addressed 1898 (12 Mar.) envelope; a few minor tone spots, otherwise fine. S.G. 54. Photo

£500-600



87

87 ☒

1d. vermilion and grey-blue initialled "JTG" on reverse, neatly tied by "ZOMBA/B.C.A." c.d.s. on locally addressed 1898 (11 Mar.) envelope on day of issue; part flap missing and slight corner creasing at right, otherwise fine. S.G. 54. Photo

£500-600



88



89



90

88 ★

1d. vermilion and grey-blue **without the initials**, unused without gum, fine. Rare. B.P.A. Certificate (1990). S.G. 54a, £8,000. Photo

£3,000-4,000

89 ★

1d. vermilion and grey-blue **without the initials**, unused without gum, fine. Rare. Brandon Certificate (1988). S.G. 54a, £8,000. Photo

£3,000-4,000

PROVENANCE:  
Richard Tompkins, September 2006

90 ★

1d. vermilion and grey-blue **without the initials**, unused without gum, fine. Rare. R.P.S. Certificate (1992). S.G. 54a, £8,000. Photo

£3,000-4,000



Nyasaland, 1898 Provisional "Cheque" Stamp Issue,  
Setting I, Imperforate with Postmaster's initials - *contd.*

## An Extremely Rare Example with Centre Inverted



91

91 ★

1d. vermillion and grey-blue **without the initials and centre inverted**, unused without gum, fine. One of the major rarities of British Central Africa philately with only fifteen believed to exist. B.P.A. Certificate (1997). S.G. 54b, £32,000. Photo

£15,000-20,000

*Note: This exceptionally rare variety was first reported in "Stanley Gibbons Monthly Journal", October 1901 where it was stated that they believed that the whole top row of one sheet "was struck thus". It is unknown if this strip that was referred to was cut up at the time though two pairs were extant, one in the Royal Philatelic Collection (Positions 11 and 12) and one ex the Hind sale (Positions 14 and 15) though the latter pair's whereabouts remain unknown. The Mosley collection contains a single (Position 1).*

PROVENANCE:

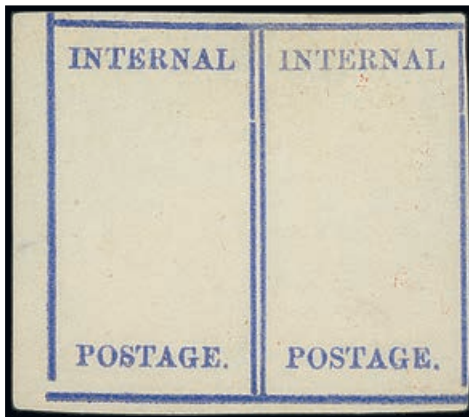
Richard Tompkins, November 2006

**Setting II, Imperforate with control number and letter, or letters in plain relief on reverse**

92 ○

1d. vermilion and pale ultramarine (4) and 1d. vermilion and deep ultramarine (3), all used, one on small piece, condition a little mixed; also an example with forged initials on reverse. S.G. 55b, 56, £1,040

£150-180



93

93 ★

1d. vermilion and pale ultramarine corner pair from the lower left of the sheet, [16-17], variety **centre omitted**, fine unused. Very rare. S.G. 55d, var. Photo

£10,000-12,000

PROVENANCE:

Bryan de Robeck, September 1983

William Frazer, 2004

94 ○田

1d. vermilion and deep ultramarine (pale shade), a block of four [14-15/29-30] with Control "2G", "1/F", "E/17" and "16/FY", each cancelled by "ZOMBA/B.C.A." c.d.s. for 13 May 1898, fine. S.G. 56, £640

£200-250

95 ○田

1d. vermilion and deep ultramarine (pale shade), a block of four with margins at top and foot [13-14/27-28] with Controls "3/X", "4/M", "Z19" and without control, cancelled by two light strikes of "ZOMBA/B.C.A." c.d.s. for 21 May 1898, fine. S.G. 56/a, £680

£250-300



96



97



98

96 ★

1d. vermilion and deep ultramarine **without Control at back**, unused without gum, very fine. Rare. R.P.S. Certificate (1985). S.G. 56a, £7,000. Photo

£2,000-2,500

PROVENANCE:

Richard Tompkins, September 2006

97 ★

1d. vermilion and deep ultramarine **without Control at back**, unused without gum; some split embossing, otherwise fine. Rare. S.G. 56a, £7,000. Photo

£1,500-1,800

98 ★

1d. vermilion and deep ultramarine **without Control at back**, unused without gum; small thin and some split embossing though of fine appearance. S.G. 56a, £7,000. Photo

£1,000-1,200

Nyasaland, 1898 Provisional "Cheque" Stamp Issue, Setting II, Imperforate with control number and letter, or letters in plain relief on reverse - *contd.*



99

99 ☒

1d. vermilion and deep ultramarine horizontal strip of five, each neatly cancelled by "FORT JOHNSTON/B.C.A." on locally addressed and registered 1898 (17 May) envelope showing "R" in circle handstamp. A rare franking with very few of the registration handstamp recorded. S.G. 56. Photo

£1,000-1,200

PROVENANCE:  
Gerald Simpson, December 1982



100

100 ☒

1d. vermilion and deep ultramarine pair with margin at top, neatly tied by "FORT JOHNSTON/B.C.A." c.d.s. on locally addressed 1898 (7 July) envelope, fine. S.G. 56. Photo

£250-300



Setting II, Perf. 12 (June 1898)



101

- 101 ★ 1d. vermilion and pale ultramarine, [4] with Control “wx”, fine unused without gum. Rare. Brandon Certificate (1991). S.G. 57, £6,500. Photo £2,000-2,500
- 102 ○ 1d. used range comprising blocks of four on pieces (2, one marginal from the left of the sheet) and singles (11), all but one cancelled by Zomba c.d.s.; three with thins, otherwise generally fine. S.G. 57/57a £150-180
- 103 ○ 1d. vermilion and pale ultramarine block of twelve from the right of the sheet, [10-15/25-30] backed on piece, each cancelled by “ZOMBA/B.C.A.” c.d.s., fine. S.G. 57, £456 £150-180



104



105

- 104 ☒ 1d. vermilion and deep ultramarine, block of four from the left of the sheet cancelled by “ZOMBA/B.C.A.” c.d.s. on reverse of locally addressed 1898 (20 July) envelope, fine. S.G. 57a. Photo. £200-250
- 105 ☒ 1d. vermilion and deep ultramarine, block of four from the left of the sheet cancelled by “ZOMBA/B.C.A.” c.d.s. on reverse of locally addressed 1898 (20 July) envelope; a single has been removed from obverse. S.G. 57a. Photo. £150-180
- 106 ☒ 1d. vermilion and deep ultramarine (2), one tied by “BLANTRYE/B.C.A.” c.d.s. on 1898 (9 July) envelope to Fort Johnston with arrival datestamp on reverse, the other tied by “TSHIROMO/B.C.A.” squared-circle d.s. on locally addressed envelope; fine £120-150

Nyasaland - *contd.*

## 1903-04 DEFINITIVE ISSUE

### Die Proofs



107



108

107 ⑩ Small format master with uncleared value tablets and surround, in black on glazed card (92x60mm.) marked "BEFORE HARDENING" and dated "6 NOV 02", fine. Photo £250-300

108 ⑩ 2/6d. with blank vignette, in black on glazed card (92x60mm.) marked "BEFORE HARDENING" and dated "8 DEC 02", fine. Photo £200-250



109



110

109 ⑩ 2/6d. with blank vignette in black on glazed card (83x50 mm.), unmarked, fine. Photo £120-150

110 ⑩ 4/- with blank vignette, in black on glazed card (92x60mm.) marked "BEFORE HARDENING" and dated "30 JAN 03", fine. Photo £200-250



111

111 ⑥ 10/- with blank vignette, in black on glazed card (92x60mm.) marked “BEFORE HARDENING” and dated “30 JAN 03”, fine. Photo

£200-250



112

112 ⑥ £1 with blank vignette, in black on glazed card (92x60mm.) marked “BEFORE HARDENING” and dated “29 JAN 03”, fine. Photo

£200-250



113

113 ⑥ £1 with blank vignette in black, on glazed card (92x60mm.) marked “AFTER HARDENING” and dated “30 JAN 03”, fine. Photo

£200-250



Nyasaland, 1903-04 Definitive Issue - *contd.*

Imperforate Colour Trials on gummed watermarked paper



114



115



116



117

- |       |  |          |
|-------|--|----------|
| 114 ⑤ | 1d. in grey and reddish buff, the colour of the adopted 6d., fine. Photo | £150-180 |
| 115 ⑤ | 1d. in carmine, fine. Photo  | £150-180 |
| 116 ⑤ | 1d. in brown and dull purple, fine. Photo                                | £150-180 |
| 117 ⑤ | 1d. in blue-green and brown, fine. Photo                                 | £150-180 |



118



119

- |       |   |          |
|-------|---|----------|
| 118 ⑤ | 2/6d. in dull purple and dull purple, watermark sideways, without gum, fine. Photo<br><i>Note: Although issued on watermark Crown CC paper, the 2/6d. colour trials were printed on paper watermark Crown CA.</i> | £150-180 |
| 119 ⑤ | 2/6d. in blue-green and brown, watermark upright; small light crease at upper left, otherwise fine. Photo   | £200-250 |



120



121

- |       |   |          |
|-------|---|----------|
| 120 ⑤ | 2/6d. in brown and green, watermark upright; small corner crease at lower left, otherwise fine. Photo                             | £200-250 |
| 121 ⑤ | 2/6d. in dull purple and yellow-green, watermark upright; small patch of paper adhering to reverse at foot, otherwise fine. Photo | £200-250 |

**Specimens**

- 122 ☉ 1d. to £10 set of ten, each overprinted "SPECIMEN", fine mint. S.G. 59s-67s, £925 £250-300

**Mint**

- 123 ★ 1d. to £1 set of nine, some low values with hinge remnants, otherwise fine. S.G. 59-66, £650 £180-220
- 124 ★ 1d. to £1 set of nine with additional 2/6d. (2) and 10/-; the 2d. and 6d. with hinge remnants, otherwise fine. S.G. 59-66, £1,015 £250-300



125



127

- 125 ★田 6d. grey and reddish buff block of four with **watermark inverted**, fresh and fine mint. A scarce multiple. S.G. 62aw, £900. Photo £300-400

- 126 ★ 6d. grey and reddish buff with **watermark inverted**, fine mint. S.G. 62aw, £225 £60-80

- 127 ★ £10 grey and blue with large part original gum, fresh and fine. A lovely example and rare in this outstanding condition. B.P.A. Certificate (1996). S.G. 67, £8,500. Photo £3,500-4,500

PROVENANCE:

Richard Tompkins, September 2006

**Used**

- 128 ○ 1d. (4, three on small pieces), 2d., 6d., 1/-, 2/6d., 4/-, 10/- (2, one with vignette washed) and £1, fine. Cat. £1,000+ £200-250



129

- 129 ○ £10 grey and blue lightly cancelled by "DOWA/B.C.A." squared-circle d.s., fine. A choice example of this rare high value. B.P.A. Certificate (1979). S.G. 67, £5,000. Photo £2,000-2,500

Nyasaland - *contd.*

## 1907 WATERMARK MULTIPLE CROWN CA

Specimens

The Unique 2D. and 4D. Blocks Handstamped "SPECIMEN"



— 130 —

130 ☉田

2d. dull and bright purple and 4d. grey-green and black, together with the issued 1d. and 6d., all in blocks of four on separate pieces with each handstamped "SPECIMEN" (18x3mm.) in seriffed capitals; the 2d. and 4d. blocks with one stamp in each partially lifted from the paper to reveal the watermark and all with some lightly stained perfs. A quite remarkable set given the rarity of the two unissued values. The only blocks of four of these two unissued values, in any form, in private hands. S.G. 68-71. Photo

£40,000-50,000



Mint

The Unissued 2D. and 4D. Rarities



————— 131 —————

131 ★

2d. dull and bright purple and 4d. grey-green and black, both with part original gum, lovely colours giving a fresh and fine appearance. One of the greatest rarities of Nyasaland philately and classic showpieces of the Edward VII reign. A. Diena Certificate (1957). S.G. 69-70, £38,000. Photo

£18,000-22,000

*Note: Only 18 of each stamp reached the market comprising a block of ten, a block of four (now in the Royal Collection), a pair and two singles (one in the Royal Collection). The block of ten has subsequently been divided. One stamp of each is represented in the British Library Philatelic Collection (ex Mosley).*

Nyasaland - *contd.***1908-11 ISSUE****Die Proof**

132

132 ⑩

3d. with blank vignette, in black on glazed card (92x60mm.) marked "BEFORE HARDENING" and dated "14 FEB 08", fine. Photo

£200-250

**Imperium Colour Trial**

133

133 ⑩

1d. in blue-green and carmine affixed to small piece, fine. Photo

£100-120

**Specimens**

134 ⑤

½d. to £1 set of ten each overprinted "SPECIMEN", each with small hinge remnant, fine mint. S.G. 72s-81s, £600

£150-180



135

135 ⑤

£10 purple and ultramarine overprinted "SPECIMEN"; small black mark on reverse, otherwise fresh and fine mint. S.G. 82s, £1,100. Photo

£300-400

**Mint**



Ex 136



Ex 137



Ex 138



139



140

- |       |  |              |
|-------|--|--------------|
| 136 ★ | ½d. to £1 set of ten and additional 4d. with <b>watermark inverted</b> , the £1 with hinge remnants, otherwise fine mint. S.G. 72-81, £1,100. Photo for £1 | £300-400     |
| 137 ★ | ½d. to £1 set of ten with additional ½d. to 6d. and 4/-, a few with hinge remnants, otherwise fine mint. S.G. 72-81, £1,000+. Photo for £1                 | £250-300     |
| 138 ★ | 2/6d. (both shades), 4/-, 10/- and £1, fine mint. S.G. 78-81, £1,375. Photo for £1   | £400-500     |
| 139 ★ | £1 purple and black on red, fine mint. S.G. 81, £650. Photo  | £200-250     |
| 140 ★ | £1 purple and black on red, variety <b>serif on "G"</b> , fine mint. Very rare. S.G. 81c, £3,000. Photo  | £1,000-1,200 |



141

- |       |   |              |
|-------|---|--------------|
| 141 ★ | £10 purple and ultramarine, large part original gum, fine and most attractive. An important Key Type high denomination. S.G. 82, £12,000. Photo | £4,000-5,000 |
|-------|---|--------------|

**Used**



Ex 142



143

- |       |   |          |
|-------|---|----------|
| 142 ○ | ½d. to 1/-, 2/6d. and £1, fine used. S.G. 72-78, 81, £899. Photo for £1   | £250-300 |
| 143 ○ | £1 purple and black on red, clearly cancelled by "LILONGWE/B.C.A." squared-circle d.s. for 2 March 1909, fine. S.G. 81, £750. Photo | £200-250 |



Nyasaland - *contd.*

## 1913-21 WATERMARK MULTIPLE CROWN CA



144



145

### Imperforate Rough Plate Proofs

- |       |  |          |
|-------|--|----------|
| 144 ① | 1/- in grey and black, a vertical pair on wove paper with part or full (lower stamp) original gum, fine. Photo | £120-150 |
|-------|--|----------|

### Printer's Waste

- |       |  |        |
|-------|--|--------|
| 145 ① | £10 purple and blue on buff with sheet margin at foot, imperforate; faults on reverse though of fine appearance. Photo | £60-80 |
|-------|--|--------|

### Specimens

- |       |   |          |
|-------|---|----------|
| 146 ⑤ | ½d. to £1 set of twelve, each overprinted "SPECIMEN", fine mint. S.G. 83s-98s, £650 | £180-220 |
| 147 ⑤ | ½d. to £1 set of twelve, each overprinted "SPECIMEN", fine mint. S.G. 83s-98s, £650 | £180-220 |



148



149

- |       |  |          |
|-------|--|----------|
| 148 ⑤ | £10 purple and dull ultramarine overprinted "SPECIMEN", fine mint. S.G. 99s, £800. Photo | £250-300 |
| 149 ⑤ | £10 purple and dull ultramarine overprinted "SPECIMEN", fine mint. S.G. 99s, £800. Photo | £250-300 |

**Mint**

- 150 ★ ½d. (2), 1d. (4), 2d. (3), 2½d. (2), 3d. (2), 4d. (2), 6d. (3), 1/- (4), 2/6d. (3), 4/- (2), 10/- (3), £1 (3), plus 1921-33 Script ½d. to 2/-, 4/- and 5/-, fine mint. Cat. £1,300+ £400-500



151



152



153



154

- 151 ★ 4/- carmine and black with *break in scroll*, fine mint. S.G. 95a, £350. Photo £100-120
- 152 ★ £1 purple and black on red with **serif on "G"**, fine mint. S.G. 98i, £1,100. Photo £350-450
- 153 ★ £10 purple and dull ultramarine, fresh and fine mint. A lovely example. Initialled "AD" (Diena). S.G. 99, £8,500. Photo £3,000-4,000
- 154 ★ £10 purple and royal blue, fresh and fine mint. S.G. 99e, £4,500. Photo £1,200-1,500

**Used**

- 155 ○ ½d. (2), 1d. (2), 2d. (2), 2½d., 3d. (2), 4d. (2), 6d., 1/- (3), 2/6d. (2), 4/-, 10/- (2), £1 (2), plus 1921-33 Script 1½d., 2d., 6d., 2/-, 2/6d., 4/- and 5/-, all used and generally fine. Also three with fiscal cancellations. Cat. £1,000+ £250-300



156

- 156 ○ £10 purple and royal blue cancelled by part double-ring d.s., good colour, fine. S.G. 99e, £2,250. Photo £600-800

Nyasaland - *contd.*

## 1921-33 WATERMARK MULTIPLE SCRIPT CA

Die Proofs



— 157 —

157 ⑩

High value vignette and 2/- frame stamp-size die proofs in black on glazed card on piece, and 5/- frame stamp-size die proof in black on glazed on piece, all with dates and details of leads taken, fine. Photo

£800-1,000



158

158 ⑩

5/- frame in black on glazed card marked "Appd", initialled and dated "21/12", fine. Photo

£250-300



**Imperforate Colour Trial**



159

- 159 ⑥ 5/- in green and red on yellow, affixed to piece, initialled and dated "11.1.29", marked "Approved for Colour", further initialled and dated "12/1/29", fine. Photo £200-250

**Specimens**

- 160 ⑤ ½d. to 10/- set of thirteen with an additional 2/6d., each overprinted or perforated "SPECIMEN", fine mint. S.G. 100s-113s, £650+ £180-220

**Mint**



161

- 161 ★ 2/6d. black and scarlet-vermilion on grey-blue showing *broken crown and scroll*, fine mint. S.G. 110kb, £450. Photo £150-180
- 162 ★ 4/- carmine and black pair, the right-hand stamp showing *broken crown and scroll*, fresh and fine mint. S.G. 111/b, £255 £60-80
- 163 ④ 5/- green and red on yellow showing *break in scroll*, fine unmounted mint. S.G. 112a, £375 £100-120

Nyasaland, 1921-33 Watermark Multiple Script CA, Mint - *contd.*



164



165

164 ★	10/- green and scarlet on emerald, fine mint. A scarce shade. S.G. 113h, £750. Photo	£200-250
165 ★	10/- green and scarlet on emerald with <i>broken crown and scroll</i> , well-centred, fresh and fine mint. Rare. S.G. 113hb, £2,250. Photo	£700-900
166 ★	1934 ½d. to 1/- with some duplication and 1937-64 complete with 1946 Victory pair perforated "SPECIMEN" and additional 1948 Wedding 10/-, 1951 Jubilee sets (2), 1953-54 ½d. to 20/- less 1d. and 1963 ½d. to £1; fine mint. S.G. 114-122, 127-210, £700+	£200-250
167 ○	1934-64 used collection complete to 1953, fine. Cat. £520+	£120-150
168 ☉	1934-35 ½d. to 1/- set of nine perforated "SPECIMEN", fine mint. S.G. 114s-122s, £350	£80-100
169 ☉	1934-35 ½d. to 1/- set of nine perforated "SPECIMEN", fine mint. S.G. 114s-122s, £350	£80-100

## 1935 SILVER JUBILEE

170	1d. to 1/-, three sets, one perforated "SPECIMEN", fine mint. S.G. 123-126, £220	£60-80
171 ★	1d. ultramarine and grey and 2d. green and indigo, both showing " <i>bird</i> " by <i>turret</i> , fine mint. S.G. 123m, 124m, £475	£120-150
172 ☉	3d. brown and deep blue lower right corner vertical pair showing <i>kite and vertical log</i> , mounted in the selvedge only, fine. S.G. 125k, £400	£120-150
173 ☉	3d. brown and deep blue lower right corner vertical pair showing <i>kite and vertical log</i> , light crease in margin at lower right, otherwise fine unmounted mint. S.G. 125k, £400	£120-150
174 ★	1/- slate and purple showing <i>kite and vertical log</i> , fine mint. S.G. 126k, £450	£120-150

# KING GEORGE VI ISSUES

- |       |   |          |
|-------|---|----------|
| 175 ⑤ | 1937 Coronation and 1946 Victory sets perforated "SPECIMEN", fine mint. S.G. 127s-129s, 158s-159s, £290 | £80-100  |
| 176 ⑤ | 1938-44 ½d. to £1 set of fourteen perforated "SPECIMEN", fine mint. S.G.                                | £200-250 |



177

- |                     |  |              |
|---------------------|--|--------------|
| 177 ♂               | 1938-44 1½d. grey horizontal strip of six (folded) with margins at both sides, variety <b>imperforate between stamp and margin at right</b> , fine unmounted mint. Rare. S.G. 132a var. Photo<br><br><i>Note: Three sheets, numbered 606, 607 and 608, are known with this error</i> | £400-500     |
| 178 ♂               | 1938-44 2/- (almost severed), 2/6d. (severed), 5/-, 10/- and £1, each in a complete unmounted mint sheet (12x5), the £1 showing <b>serif on "G"</b> (R. 4/5), all with damage in one corner where they had stuck together. S.G. 139-143, £13,220                                     | £4,000-5,000 |
| 179 ○               | 1938-44 2/-, 2/6d., 5/-, 10/- and 20/- corner blocks of four with plate number, each cancelled by Zomba c.d.s., the £1 with some paper adhering to reverse, otherwise fine. A very scarce group. S.G. 139-143, £852+   | £300-400     |
| 180 ⑤               | 1945 ½d. to 20/- set of fourteen and 1947 1d., each perforated "SPECIMEN", fine mint. S.G. 144s-157s, 160s, £640   | £180-220     |
| 181 ⑤               | 1945 ½d. to 20/- set of fourteen and 1947 1d., each perforated "SPECIMEN", fine mint. S.G. 144s-157s, 160s, £640   | £180-220     |
| 182 ○               | 1945 2/- to 20/- in blocks of four, each cancelled by central Limbe c.d.s. for 25 January 1964, fine. S.G. 153-157, £646   | £200-250     |
| <b>Postage Dues</b> |  |              |
| 183 △               | 1950 1d. to 6d. set of five, each on small piece cancelled by Cholo c.d.s. for 30 April 1951, fine. S.G. D1-D5, £275   | £80-100      |



Nyasaland - *contd.*

## REVENUE STAMPS



184

184 ⑩

1891 £25 blue imperforate proof on gummed thin paper, large margins, fine. Barefoot 10. Photo

£500-600



——— 185 ———

185 ⑩⑤

1891 £25 blue and £50 green imperforate proofs on thin paper, both perforated "SPECIMEN", large and regular margins respectively, the £25 gummed. An attractive pair of these scarce high values. Barefoot 10, 11. Photo

£800-1,000



186

186

1891 2/6d. (4), 4/- and £1 used, and 1893 1/- on £1 mint (2) and used (2); some of the used with postal cancellations, generally fine. Barefoot Cat. £810

£300-400

187 ⑩⑤

1895 (c.) 2/6d. Freedom/Justice/Commerce imperforate proof on wove paper, perforated "specimen", affixed to piece of card ( x mm.), fine; scarce and attractive. Photo

£250-300

**Revenues**

- 188 △ 1928-36 documents or part documents with virtually all bearing KGV £1 or multiples of and cancelled by oval datestamps of District Commissioner of Blantyre (10), Fort Johnston (25) and Kasungu (38), Assistant Commissioner Blantyre, District Magistrate of Fort Johnston (7), Assistant Magistrate of Fort Johnston (2), Assistant Resident of Fort Johnston (3), Registrar of Business Names Blantyre (18) and Registrar of the High Court Blantyre (11); condition a little mixed though an interesting lot. (115) £250-300
- 189 △ 1938-46 documents or part documents with all but one bearing KGV £1 or multiples thereof cancelled by oval datestamps of District Commissioner for Fort Johnston (10) and Kasungu (3), Registrar of Business Names Blantyre (3) and Registrar of the High Court Blantyre (6); condition mixed. (22) £80-100
- 190 ⊕ 1955 1d., 2d., 3d., 6d., 1/- and 2/6d. in complete sheets (10x6), 5/- half sheet of thirty (5x6) from left of the sheet, 10/- and £1 complete sheets (6x10), a few with some small selvedge faults, otherwise fine unmounted mint. Barefoot 20-29, £16,320 £4,000-5,000

**Postal Stationery**

- 191 ☒ An unused range comprising Cards with 1893 1d. (2, one cancelled-to-order) and 2d. (2), 1895 ½d. (2, one overprinted "SPECIMEN"), 1d. (7, two overprinted "SPECIMEN") and 2d. (5, two overprinted "SPECIMEN"), ½d. overprinted "SPECIMEN", 1904 ½d. (3, two overprinted "SPECIMEN") and 1d. overprinted "SPECIMEN", 1908 ½d., 1d. and 2d. and 1938 1d. overprinted "SPECIMEN"; Envelope 1916 1d. overprinted "SPECIMEN"; Registered Envelopes with 1938 4d. sizes F (overprinted "SPECIMEN") and G, and 1953 4d. size F; and Wrapper 1899 1d. overprinted "SPECIMEN"; mostly fine £150-180

**COVERS AND CANCELLATIONS**

- 192 ☒ 1895-1903 External cards (4) comprising 1895 (May) 2d. to London cancelled by "TSHIKAWA/B.C.A." single-ring d.s.; 1897 (19 Mar.) 2d. to England cancelled by "BLANTYRE" single-ring d.s.; 1905 (Nov.) 2d. (stained) to Melsetter, Southern Rhodesia, cancelled by Port Herald? squared-circle d.s., showing Chinde, Beira (in violet), Salisbury and arrival datestamps; and 1903 (Jan.) 1d. to Wales, re-addressed to London, cancelled by "CHIROMO" squared-circle d.s. and showing Chinde transit d.s. alongside £150-180
- 193 ☒ 1896-1902 Internal cards comprising 1896 (May) 1d. (spike hole at left) from Blantyre to Chiromo cancelled by double-ring d.s.; 1897 ½d. addressed locally and cancelled by "TSHIROMO/B.C.A." double-ring d.s.; 1899 (June) ½d. cancelled by light "CHIROMO/B.C.A." squared-circle d.s.; and 1902 (6 Aug.) ½d. to Ujiji cancelled by fine "KARONGA/B.C.A." squared-circle d.s. £100-120
- 194 ☒ 1899 (July) envelope to London bearing 1896 1d. tied by "LIKOMA ID/B.C.A." double-ring d.s. and showing, on reverse, Fort Johnston, Chinde and arrival datestamps; 1901 (Mar.) and 1902 (Apr.) OHMS "*British Central Africa Gazette*" wrappers to London bearing 1897 1d. and 1901 1d. respectively; 1903 1d. wrapper from Zomba to India; and 1911 (July) envelope from Fort Johnston to Canada franked at 1d. £150-180
- 195 ☒ 1899 (18 Oct.) 1d. Internal card to London showing "IN" of "INTERNAL" deleted and replaced with manuscript "EX", cancelled by "FORT HILL/B.C.A." squared-circle d.s. with another strike alongside and showing Chinde transit c.d.s. (9.11) with Fort Johnston datestamp (28.10) on reverse £80-100
- 196 ☒ 1899 (28 Oct.) ½d. Internal card to Glasgow, uprated with 1d. pair (one defective). all cancelled by "FORT JOHNSTON/B.C.A." squared-circle d.s. and showing Chinde (9.11) transit datestamp £80-100
- 197 ☒ 1901 (Sept.) 2d. External card to Norway, cancelled by "BLANTYRE" squared-circle d.s., showing Zanzibar (23.9) and arrival (19.10) datestamps. A most unusual destination £100-120

## Nyasaland, Covers and Cancellations - *contd.*

### Airmails

198 

1933 (June) special printed envelope on R.A.F. flight from Limbe to Fort Jameson showing "NYD NRHOD AIRMAIL" double-ring d.s.; 1934 (Mar.) envelopes (7) and a stationery card carried on first flight Nyasaland to Southern Rhodesia from Blantyre to Salisbury, Cape Town (2) and Broken Hill, and from Limbe to Salisbury, Cape Town and UK (2), each with special cachet; and 1935 (Aug.) envelopes (3) flown on first flight from Nyasaland to Mozambique, each showing special cachet; also 1938 Greetings photogram

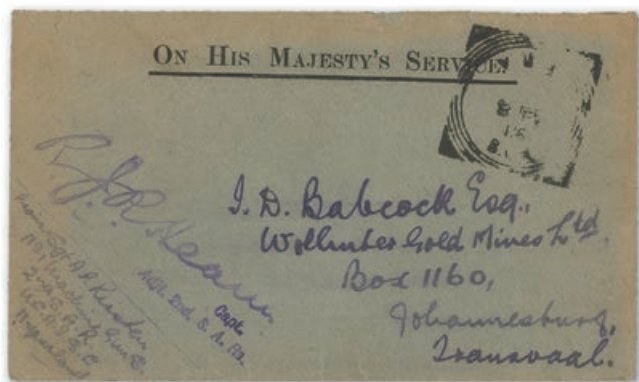
£80-100

## THE NYASA-RHODESIA FIELD FORCE 1914-19

199

A collection including the set of five overprinted "SPECIMEN"; mint comprising ½d. (8), 1d. (80 including a complete pane of sixty and two blocks of four with plate and sheet numbers), 3d. (8 including a block of four), 4d. (4) and 1/- (4); and used comprising ½d. (13 including two blocks of four, one with plate and sheet numbers), 1d. (19 including two blocks of four, one with plate and sheet numbers), 3d. (7 including a block of four), 4d. (6 including a block of four) and 1/- (10 including a block of four); generally fine. S.G. N1-N5, £2,300+

£600-800



200



201

200 

1916 (8 Feb.) OHMS from Sgt. A.R. Kirstein, 2nd S.A.R. to J.D. Babcock, Johannesburg, countersigned by Commanding Officer and showing "VUA/B.C.A." squared-circle d.s. Rare. Photo

£250-300

201 

1917 (6 July) locally addressed envelope (addressee's name altered from Rivers to Rawlings) bearing 3d., 4d. and 1/- (all top marginal, the 1/- with sheet number), all tied by F.P.O. 3 double-ring d.s. and showing pink "N.F.F. 3/NYASALAND" registration label (small stains) with added "TANDALA" in manuscript. Photo

£150-180

202 ○

1911 Portuguese Nyasa 2½r., 5r. (defective), 10r., 20r., 25r., 50r., 75r., 100r., 200r., 300r., 400r. and 500r. (perf. faults at left), each pre-cancelled with "NYASALAND/FF2" squared-circle used at Mtangula; a scarce group

£150-180

### Malawi

203 

1982 (Nov.) Remembrance Day 20t., 30t. and 1k., 1983 (Mar.) Commonwealth Day 7t. and 1k., 1984 (Feb.) Small Mammals set of four, 1985 (Jan.) Fungi 7t., 1985 (Oct.) Christmas set of four, 1987 (Oct.) Christmas set of four and 1988 (Nov.) Christmas set of four, all imperforate proofs in or on their respective printer's cards or folders some of which have traces of foxing though an attractive group

£200-250



## RHODESIA

### 1892 (JAN.) PROVISIONALS

- 204 ★      ½d. on 6d., 2d. on 6d., 4d. on 6d. and 8d. on 1/-, unused with part original gum, fine.  
S.G. 14-17, £700 £200-250

### 1896-97 ARMS ISSUE

- 205 ©      Die I 8d., 3/-, and 4/-, Die II 4d., 2/-, 2/6d., 5/- and 10/-, each diagonally  
overprinted "Specimen" (Type R4), fresh and fine mint £120-150



206

- 206 ★      Die I 8d. green and mauve on buff lower right corner mint pair, variety **imperfurate**; gum  
a touch brown and light crease in selvedge, nevertheless of very fine appearance and a  
good example of this rare and popular error. Rare. S.G. 34b, £4,250. Photo £1,200-1,500

# SPINK LIVE

Spink Live is now running on a new and improved bidding platform  
Accessible online through [www.spink.com](http://www.spink.com) and also available iOS and Android devices

**Bidding on 'Spink Live' remains free of charge**

Download on the  
App Store

GET IT ON  
Google Play

MY ACCOUNT

- Login
- Consign An Item
- Watched Lots
- My Bids

- ☒ Medals
- ☒ Stamps
- ☐ Watches
- ☒ Whiskies & Spirits
- ☒ Wines

Lot 3: SEAL, 5 songs, including all 1957-1960

Lot 4: RANDY CRAWFORD & JOE SAMPLE, 4 1957-1960

Slide to bid €

CURRENT HISTORY

Click to Login / Register    Tick your Interests    Scroll the Lots    Slide to Bid

For any enquiries or further assistance please contact:  
Tel: +44 (0)20 7563 4112 | Email: [spinklive@spink.com](mailto:spinklive@spink.com)

WHERE HISTORY IS VALUED

Rhodesia - *contd.*

## 1896 (MAY-AUG.) ON CAPE OF GOOD HOPE ISSUE

207 ★

½d. (2, both with misplaced overprint) to 5/- set of seven mint plus additional 2d. used pair and a single crossed by pen-stroke, fine. S.G. 58-64, £375

£100-120



208

208 ★

4d. blue vertical marginal pair from the foot of the sheet, the lower stamp with variety "COMPANY" entirely omitted [4], fresh lightly mounted mint. A very rare pair of which only 10 examples are recorded with it completely omitted. S.G. 62a, £9,500. Photo

£4,000-5,000

PROVENANCE:

Alan Deal

LITERATURE:

No. 7 in "Rhodesia - The Second Provisional Issue of 1896" by Colin Hoffman, FRPSL, published in "The London Philatelist", 1986



**The Royal Philatelic Society London**

We are pleased to receive proposals for membership of the Society which is through election.

If you are interested in membership, please contact us at [secretary@rpsl.org.uk](mailto:secretary@rpsl.org.uk)

If you have no proposer or seconder, please contact us for further information.

Tel: 00 44 (0)20 7486 1044 | [www.rpsl.org.uk](http://www.rpsl.org.uk)

The world's oldest and most prestigious philatelic society, established 1869, with over 2,000 members in more than 70 countries.

\*\*\*

Extensive premises in London's West End house the Society's superlative library, plus Museum and Archive, and provide first-class meeting facilities.

\*\*\*

The Society's Online Catalogue provides access to over three-quarters of a million philatelic indexes to members world-wide.

\*\*\*

A fascinating programme of displays and meetings throughout the year, supplemented by regional meetings and gatherings at major international events.

\*\*\*

The Society publishes ten times a year its own journal, *The London Philatelist*, containing articles of outstanding philatelic research, in addition to publishing major philatelic works.

\*\*\*

We are honoured to have Her Majesty Queen Elizabeth II as our Royal Patron

**1897 (JAN.) ARMS ISSUE**



209



210

- 209 ★ 3d. brown-red and slate-blue lower left corner vertical pair, variety **imperforate between**, fresh and fine mint. Rare. S.G. 69a, £4,750. Photo £2,000-2,500
- 210 ○田 £2 rosy red block of four with part papermaker's watermark, twice cancelled by Umtali c.d.s. for 13 November 1898, the lower pair with some perf re-inforcement. A fine and scarce multiple. S.G. 74, £1,900. Photo £600-800

**1898-1908 ARMS ISSUE**



212



213

- 211 ◎ ½d., 1d., 2d., 2½d. (2), 6d. (2), 1/- and £1 greyish red-purple, each diagonally overprinted "*Specimen*" (Type R3), fine mint £150-180
- 212 ★ 2/6d. bluish grey vertical pair, variety **imperforate between**, fine unused with part original gum. Scarce. S.G. 85a, £1,000. Photo £300-400
- 213 ○田 2/6d. bluish grey block of four with margin at top, variety **imperforate between**, fine and lightly cancelled. Scarce. S.G. 65a, £1,000. Photo £300-400



Rhodesia, 1898-1908 Arms Issue - *contd.*



Ex 214

214 ⑩

7/6d., £1 (both), £2, £5, £10, £20 and £100 Waterlow file stamps each with a central punch hole and with pencilled sheet position on reverse; the £100 with some short perfs. at foot, otherwise fine. Photo

£400-500



215

215 ★

£10 lilac, unused with part original gum, fresh and of good colour. A fine example of this scarce high value denomination. B.P.A. Certificate (1996). S.G. 93, £4,000. Photo

£1,500-1,800



216

216 ★

£20 yellow-bistre, unused with part original gum; horizontal crease at top not affecting fresh and fine appearance. A lovely example of this very rare stamp in above average condition. B.P.A. Certificate (1996). S.G. 93a, £16,000. Photo

£5,000-6,000

## 1905 VICTORIA FALLS ISSUE

217 ⑤

1d. to 5/- set of six overprinted "SPECIMEN", the 1d. to 1/- with firm's violet h.s. on reverse, fine mint.

£120-150

## 1909-12 ARMS ISSUE OVERPRINTED "RHODESIA"

218 ⑤

½d. to £1 set of fourteen and 1909-11 surcharge set of four, each perforated "SPECIMEN", fine mint. S.G. 100s-118s, £605

£180-220



219



220



221

- |       |  |              |
|-------|--|--------------|
| 219 ★ | £2 brown with margin at foot, unused with large part original gum; fine and rare. S.G. 113c, £5,000. Photo | £1,500-1,800 |
| 220 ○ | £2 brown, fine and lightly cancelled. S.G. 113c, £325  | £80-100      |
| 221 ★ | £5 deep blue unused and regummed; rare and of fine appearance. S.G. 113e, £9,500. Photo                    | £800-1,000   |

## 1910-13 DOUBLE HEAD ISSUE

### Printer's File Stamps

*The following section offers a remarkable group of these fascinating stamps which were originally discovered in the printer's archive. All have been washed, are without gum, and have hole punctures of varying size. Due to the way in which these stamps were stored colours do vary. It is recommended that buyers intending to bid on any lot in this section should either view personally or seek condition reports as no lot will be accepted for return on the grounds of condition*

- |        |  |          |
|--------|--|----------|
| 222 ★田 | 2d. Printing 1, S.G. 126, a lower right corner block of four | £100-120 |
|--------|--|----------|



223

- |        |  |          |
|--------|--|----------|
| 223 ★田 | 2d. Printing 10 RSC "G" ("green heads" under ultra-violet), an upper right corner block of four. Photo | £100-120 |
|--------|--|----------|

**Rhodesia, 1910-13 Double Head Issue, Printer's File Stamps - *contd.***

- |        |  |          |
|--------|--|----------|
| 224 ★田 | 2d. Printing 12 (Plate 5555 - the unissued stamps), an upper right corner block of four                                      | £100-120 |
| 225 ★田 | 3d. Printing 1 block of six (2x3) and Printing 8 vertical pair with margin at top  | £120-150 |
| 226 ★田 | 3d. Printing 8, S.G. 137, an upper right corner block of four, printer's file number, date and numbers written in top margin | £100-120 |
| 227 ★田 | 3d. Printing 8, S.G. 137, a block of six (3x2) with margin at right  | £120-150 |



228

- |        |   |          |
|--------|---|----------|
| 228 ★田 | 3d. Printing 10, RSC "G", perf. 15 block of four with margin at foot. Photo | £100-120 |
| 229 ★田 | 4d. Printing 2, S.G. 140, variant (iv), a lower right corner block of four  | £100-120 |



230

- |        |  |          |
|--------|--|----------|
| 230 ★田 | 4d. Printing 10 RSC "E", perf. 15 block of six (3x2) with margin at right. Photo | £120-150 |
|--------|--|----------|





231

231 ★田

5d. Printing 6, S.G. 141a, block of four. Photo

£100-120



232

232 ★田

5d. Printing 10 RSC "C", a lower right corner block of four. Photo

£100-120

233 ★田

6d. Printing 1, S.G. 145, an upper right corner block of four with printer's file number and numbers printed written in top margin

£100-120

234 ★田

6d. Printing 2, S.G. 145, variant, block of six (2x3) with margin at left

£120-150

235 ★田

6d. Printing 8 RSC "E", an upper right corner block of eight (4x2) with imprint

£150-180

236 ★田

6d. Printing 10 RSC "H", a lower left corner block of four

£100-120

237 ★田

8d. Printing 2, perf. 13½, S.G. 185, a lower right corner block of four

£100-120

Rhodesia, 1910-13 Double Head Issue, Printer's File Stamps - *contd.*



238

- |        |  |          |
|--------|--|----------|
| 238 ★田 | 10d. Printing 1, S.G. 150, a lower right corner block of four. Photo | £100-120 |
| 239 ★  | 1/- Printing 2, S.G. 152, vertical pair                              | £50-60   |



240

- |        |   |          |
|--------|---|----------|
| 240 ★田 | 1/- Printing 9 RSC "F" variant ("vanishing heads"), a block of four with margin at right. Photo       | £100-120 |
| 241 ★田 | 2/- Printing 2, a block of four with printer's file number, date and numbers written in margin at top | £120-150 |
| 242 ★田 | 2/- Printing 9 RSC "C", a block of four with margin at left   | £120-150 |



243



244

- 243 ★田 2/6d. Printing 4, S.G. 155a, an upper left corner block of four with *long gash in Queen's ear* and showing printer's file number, date and numbers written in top margin. Photo £300-400
- 244 ★田 2/6d. Printing 4, S.G. 155a, a block of four with margin at top showing large part imprint. Photo £250-300



245



246

- 245 ★田 3/- Printing 7, S.G. 158a, an upper right corner block of four with printer's file number, date and numbers written in top margin. Photo £250-300
- 246 ★田 5/- Printing 7, S.G. 160, a block of four with margin at right. Photo £250-300



Rhodesia, 1910-13 Double Head Issue, Printer's File Stamps - *contd.*



247



248

- 247 ★田 7/6d. Printing 1, S.G. 160b, a block of four with margin at right. Photo £250-300
- 248 ★田 7/6d. Printing 12 RSC "C", (Plate 5555 - the unissued stamps), a block of four with margin at left. Photo £250-300



249



250

- 249 ★田 10/- Printing 1 RSC "B" variant, an upper right corner block of four. Photo £250-300
- 250 ★田 10/- Printing 7 RSC "B", an upper left corner block of four, [2] showing *mid-gash in Queen's ear*, printer's file number, date and numbers written in margin at top. Photo £300-400



251

251 ★田

£1 Printing 6, S.G. 166, a block of four with margin at left. Photo

£300-400



252

252 ★田

£1 Printing 9 RSC "G", a block of four with margin at right. Photo

£300-400

**Perf. 14**

253 ○

A used collection comprising ½d. (24 including a block of four, four perf 15 and one perf 13½), 1d. (15 including six perf 15 and two perf 13½), 2d. (15, one perf 15), 2½d. (7, one perf 15), 3d. (9, one perf 15 - stained), 4d. shades (6 including one brown-purple and orange with fine Gadzema double-ring d.s., and one perf 15 - creased), 5d. (8 including a purple-brown and ochre error and a lake-brown and green with 1980 PFSA certificate stating thinned, creased and slightly faded, and two perf 15), 6d. (6, one with corner crease and one perf 15), 8d. (4, one perf 13½), 10d. scarlet and reddish mauve (3, one with B.P.A certificate, 1980), 10d. carmine and deep purple (4), 1/- (5, two perf 15), 2/- (5, one with fine Golden Valley c.d.s.) and 3/-. Condition a little mixed in places though most fine. A very good basis upon which to build

£1,000-1,200

Rhodesia, 1910-13 Double Head Issue - *contd.*

## Halfpenny

- 254 ★ Yellow-green group (13 including two pairs; four with hinge remnants), olive-green (2, one with hinge remnant), pale green and dull green, mostly fine mint £80-100



255

- 255 ○ Bluish green horizontal pair, variety **imperforate**, neatly cancelled by two large part strikes of Bulawayo c.d.s., fine. Rare. R.P.S. Certificate (1974). S.G. 120a, £7,500. Photo £2,000-2,500
- PROVENANCE:  
Robert Gibbs, October 1987

## Perf. 15

- 256 ★ Blue-green, light hinge remnant, fine mint. S.G. 167, £300 £70-90



257



258

- 257 ★ Yellow-green, fine mint. S.G. 168, £350. Photo £100-120
- 258 ★ Apple-green, fine mint. S.G. 169, £600. Photo £100-120

## Perf. 13½

- 259 ★ Yellow-green, fine mint. S.G. 182, £300 £80-100
- 260 ○田 Green block of four, fine used. S.G. 182a, £240 £80-100



**One Penny**

**Perf. 14**

- 261 ★ Bright carmine group (4, one with light crease), carmine-lake (3, one with hinge remnants) and rose-red, generally fine mint £100-120

**Perf. 15**



262



263

- 262 ⊕ Carmine, margin at right, fine unmounted mint. S.G. 170, £300. Photo £100-120
- 263 ★ Carmine-lake, fine mint. S.G. 170a, £450. Photo £100-120



264



265



266

- 264 ★ Rose-carmine, fine mint. S.G. 170b, £350. Photo £100-120

**Perf. 13½**

- 265 ★ Bright carmine with margin at top, [4], fine mint. B.P.A. Certificate (1980) for a vertical pair from which this stamp came. S.G. 183, £2,000. Photo £600-800
- 266 ★ Bright carmine, fine mint. R.P.S. Certificate (1987). S.G. 183, £2,000. Photo £500-600

Rhodesia, 1910-13 Double Head Issue - *contd.*

Two Pence

Perf. 14

- 267 ★ ⓘ Black and grey (3), black-purple and slate-grey (2), black and slate-grey (2), black and slate (2), and black and grey-black, a few with hinge remnants otherwise generally fine mint £250-300
- 268 ⓘ田 Black and grey, a top right corner block of four with sheet number "319", fresh mint and mounted in the margin only; the right hand pair with light vertical crease, otherwise fine. S.G. 126 £150-200



269

- 269 ⓘ Black and grey-black with margin at top, [2] with *long gash in Queen's ear*, mounted on the selvage only, fresh and fine. S.G. 130. Photo £80-100

Perf. 15



270



271



272



273

- 270 ★ Black and grey-black, fine unused with large part original gum. S.G. 171, £1,000. Photo £300-400
- 271 ★ Black and grey-black, fine unused with part original gum. Scarce. B.P.A. Certificate (2006). S.G. 171, £1,000. Photo £250-300
- 272 ★ Black and grey-black, fine unused with part original gum. Scarce. S.G. 171, £1,000. Photo £250-300
- 273 ★ Black and grey, fine unused with part original gum. Scarce. B.P.A. Certificate (2007). S.G. 171a group, £900. Photo £250-300

## Two Pence Halfpenny

### Perf. 14

- 274 ★ Ultramarine (5), bright ultramarine (6 including a top marginal block of four), dull blue (4), chalky blue (2), perf. 15 ultramarine lower right corner example, mostly fine mint £150-180
- 275 ★ 田 Bright ultramarine block of ten (5x2) with margins at ends, fresh and fine mint. S.G. 131a, £320 £200-250

## Three Pence

- 276 ★ Purple and ochre (2, one with hinge remnants), purple and yellow-ochre (2, one top marginal), magenta and yellow-ochre (2) and violet and ochre (2), fine mint £250-300



277



278



280



279



281

- 277 ★ Purple-brown and ochre, [2] with *long gash in Queen's ear*, fine with large part original gum. S.G. 134. Photo £80-100
- 278 ★ 田 Purple and yellow-ochre block of four, fine mint. S.G. 135. Photo £300-400
- 279 ★ Purple and yellow-ochre, [2] with *long gash in Queen's ear*, fine mint. S.G. 135. Photo £70-90
- 280 ★ Maroon and ochre (RSC "B"), [2] with *hook in Queen's ear*, fine unused with part to large part original gum. Photo £120-150
- 281 ★ Deep reddish purple and ochre (RSC "C"), fresh and fine mint. Photo £300-400



282

- 282 ○ Deep reddish purple and ochre (RSC "C"), [2] with *hook in Queen's ear*, indistinctly cancelled, fine. Photo £60-80



Rhodesia, 1910-13 Double Head Issue, Three Pence - *contd.*



283



284



285

**Perf. 15**

- 283 ★ Claret and pale yellow-ochre, fine unused with part original gum. S.G. 173a, £4,000. Photo £3,000-4,000

**Perf. 14x15**

- 284 ★ Deep reddish purple and ochre RSC "I" [NG], fine unused with large part original gum. Very rare. R.P.S. Certificate (1984). S.G. 180, £9,500. Photo £3,000-4,000
- 285 ○ Deep reddish purple and ochre RSC "I" [NG], neatly cancelled with Gatooma 4 June 1913 c.d.s.; very fine. S.G. 180. Photo £150-180
- 286 ○ Deep reddish purple and ochre RSC "I" [NG], indistinctly cancelled, fine. S.G. 180 £80-100

**Four Pence**

- 287 ★ Greenish black and orange, brown-purple and orange (2), and black and orange (5), plus perf 15 black and orange, fine mint £150-180



287A



288

- 287A ⊕田 Greenish black and orange block of four, fine unmounted mint. S.G. 138. Photo £300-400
- 288 ★ Blue-black and distinctly aniline orange, [2] with *long gash in Queen's ear*, unused with part to large part original gum. S.G. 140 variant i. Photo £150-180
- 289 ★ Black and orange (RSC "B"), fine with part original gum £80-100

**Perf. 15x14**



290

- 290 ☼ Black and orange, fine unmounted mint. S.G. 181, £450. Photo £150-180

**Five Pence**

**Perf. 14**

- 291 ★ Purple-brown and olive-green (2, one overprinted "SPECIMEN", the other [2] with *long gash in Queen's ear* - heavy hinge remnant) and purple-brown and olive-yellow (6), fine mint £120-150



292

- 292 ★ Purple-brown and ochre error, small hinge remnant at top, fine mint. B.P.A. Certificate (1957). S.G. 141ab, £650. Photo £200-250



293

- 293 ○田 Purple-brown and ochre error block of four with Salisbury 27 May 1913 c.d.s., fine. Brandon Certificate (1980). S.G. 141ab, £600. Photo £200-250

- 294 ★ Lake-brown and olive, fine mint. S.G. 143, £325 £80-100

Rhodesia, 1910-13 Double Head Issue, Five Pence, Perf. 14 - *contd.*

## The Extremely Rare Mint 5D. Lake-brown and Green



295

295 ⊕

Lake-brown and green, [43] with large printer's mark at upper left, a massive stamp of lovely colour, unused with large part original gum; some ragged perms. at foot. An extremely rare stamp of which only twelve to fifteen mint examples are recorded. B.P.A. Certificate (1979). S.G. 143a, £24,000. Photo

£10,000-12,000

PROVENANCE:  
Robert Gibbs, October 1987





296



297



298

- 296 ○ Lake-brown and green, cancelled by legible Umvuma c.d.s.; minor wrinkle at lower right, otherwise fine. Rare. S.G. 143a, £1,600. Photo £400-500
- 297 ★ Reddish brown and ochre, the so-called “Roman ochre” (RSC “B”), hinge remnant, otherwise fine mint. Photo £250-300
- Perf. 15**
- 298 ★ Lake-brown and ochre, fine mint. R.P.S. Certificate (1979). S.G. 175, £800. Photo £250-300

### Six Pence

- Perf. 14**
- 299 ★ Red-brown and mauve (8, one [2] with *long gash in Queen’s ear*, two creased and one thinned) and brown and purple (thinned - R.P.S. Certificate, 1978), generally fine mint £150-180
- 300 ★ Purple-brown and brown-purple (RSC “H”), fine with part original gum £80-100

### Perf. 15



301

- 301 ★ Brown and mauve, fine mint. Scarce. R.P.S. Certificate (1967). S.G. 176, £900. Photo £250-300

### Eight Pence

- Perf. 14**
- 302 ★ Dull purple and purple, [2] with *long gash in Queen’s ear*, large hinge remnant, otherwise fine mint. S.G. 147. £80-100
- 303 ★ Greenish black and purple, [2] with *mid gash in Queen’s ear*, fine mint. S.G. 148. £100-120
- Perf. 13½**
- 304 ★ Black and purple (4, one with disturbed gum), grey-purple and dull purple, plus one perf 14; generally fine. S.G. 185, 185a £120-150

Rhodesia, 1910-13 Double Head Issue, Eight Pence, Perf. 13½ - *contd.*



305



307

- |       |   |          |
|-------|---|----------|
| 305 ★ | Black and purple, [2] with <i>long gash in Queen's ear</i> , fine with part original gum. S.G. 185. Photo | £80-100  |
| 306 ★ | Grey-purple and purple, small part original gum, fine. S.G. 185a, £400                                    | £80-100  |
| 307 ○ | Grey-purple and purple, fine used. S.G. 185a, £475. Photo   | £120-150 |

**Ten Pence**

- |       |   |          |
|-------|---|----------|
| 308 ★ | Scarlet and reddish mauve (3, one with small thin and one with heavy hinge remnants) and carmine and deep purple (heavy hinge remnants), mint. S.G. 149-150 | £150-180 |
|-------|---|----------|

**One Shilling**

- |       |  |          |
|-------|--|----------|
| 309 ★ | Black and deep blue-green, black and pale blue-green (4, one with heavy hinge remnant) and purple-black and blue-green (small light thin and hinge remnant), fine mint. S.G. 151a-152a, £830 | £150-180 |
|-------|--|----------|



310



311

- |       |  |          |
|-------|--|----------|
| 310 ⊛ | Grey-black and deep blue-green, marginal, [2] with <i>long gash in Queen's ear</i> , mounted on selvage only, fresh and fine unmounted mint. S.G. 151. Photo       | £100-120 |
| 311 ○ | Grey-black and deep blue-green, [46] with <i>King's extra curl</i> , centrally cancelled by superb Battlefields c.d.s. for 11 November 1910, fine. S.G. 151. Photo | £100-120 |
| 312 ★ | Black and deep blue-green, fine mint. R.P.S. Certificate (1978). S.G. 151a, £275   | £80-100  |
| 313 ○ | Black and pale blue-green top left corner pair, [2] with <i>mid gash in Queen's ear</i> , fine cancelled-to-order. S.G. 152  | £80-100  |



314

- 314 ★田 Black and (pale) turquoise-blue (RSC “F”, no gash printing), a block of four with margin at right, fine mint. A rare multiple. Photo £1,000-1,200



315



316



317

- 315 ★ Black and (bright) turquoise-blue (RSC “H”), hinge remnant, fine mint. Photo £100-120
- 316 ★ Black and (bright) turquoise-blue (RSC “H”), hinge remnant, fine mint. Photo £100-120

**Perf. 15**

- 317 ★ Black and blue-green, fine with large part original gum. S.G. 177, £1,300. Photo £300-400



318

- 318 ○ Black and blue-green [?NG], a horizontal pair each neatly cancelled with Nyamandhlovu 1917 c.d.s.; fine and most attractive. S.G. 177. Photo £150-180



Rhodesia, 1910-13 Double Head Issue - *contd.*

## Two Shillings

### Perf. 14

319 ★

Black and ultramarine, seven examples with part to large part original gum, one overprinted "SPECIMEN" (heavily mounted), two with a small thin (one also with heavy hinge remnant) and one with light gum creases and hinge remnant, the others fine. S.G. 153, £720

£150-180



320



321



322

320 ★

Black and blue, fine with large part original gum. S.G. 154, £1,200. Scarce. Photo

£300-400

321 ★

Black and China blue, (RSC "D", Thick Ear printing); small slight central gum thin, otherwise fine with part original gum. Photo

£250-300

322 ★

Purple-black and ultramarine; the odd very light tone spot on reverse, otherwise fine mint. Rare. S.G. 154a, £3,000. Photo

£600-800

### Perf. 15



323



324

323 ★

Black and dull blue; minor gum wrinkle otherwise fine with large part original gum. Rare. S.G. 178, £2,500. Photo

£600-800

324 ○

2/- black and dull blue [TE5], neatly cancelled with one complete and one part strike of the "RE GD BULAWAYO/RHODESIA" single-ring d.s.; very fine and most attractive. S.G. 178, £350. Photo

£250-300

325 ○

2/- black and dull blue, indistinctly cancelled, fine. S.G. 178, £350

£80-100

Two Shillings and Sixpence



326



327



328

- |       |  |          |
|-------|--|----------|
| 326 ★ | Black and lake, fine mint. S.G. 155, £375. Photo                         | £100-120 |
| 327 ★ | Black and lake, fine with large part original gum. S.G. 155, £375. Photo | £80-100  |
| 328 ★ | Black and lake, fine with large part original gum. S.G. 155, £375. Photo | £80-100  |



329



330



331

- |       |   |          |
|-------|---|----------|
| 329 ○ | Black and lake showing line below "RI" of "AFRICA", neatly cancelled, fine. S.G. 155, £450. Photo | £150-180 |
| 330 ○ | Black and lake, fine used with part Gwelo c.d.s. S.G. 155, £450. Photo                            | £120-150 |
| 331 ○ | Black and lake, fine and lightly cancelled. S.G. 155, £450. Photo                                 | £100-120 |



332



333



334

- |       |   |          |
|-------|---|----------|
| 332 ★ | Black and crimson, fine with large part original gum. S.G.155a, £350. Photo | £100-120 |
| 333 ★ | Sepia and deep crimson, fine mint. S.G. 156, £425. Photo                    | £120-150 |
| 334 ★ | Sepia and deep crimson, fine mint. S.G. 156, £425. Photo                    | £120-150 |

Rhodesia, 1910-13 Double Head Issue, Two Shillings and Sixpence - *contd.*



335



336



337

- |       |  |          |
|-------|--|----------|
| 335 ○ | Sepia and deep crimson, cancelled by large part Penhalonga c.d.s., fine. S.G. 156, £375. Photo | £100-120 |
| 336 ○ | Bistre-brown and crimson, fine used. S.G. 156a, £700. Photo                                    | £180-220 |
| 337 ○ | Bistre-brown and crimson, indistinctly cancelled, fine. S.G. 156a, £700. Photo                 | £150-180 |



338



339



340



341

- |       |  |          |
|-------|--|----------|
| 338 ○ | Bistre-brown and crimson, indistinctly cancelled, fine. S.G. 156a, £700. Photo | £150-180 |
| 339 ★ | Black and rose-carmine, fine with part original gum. S.G. 157, £375. Photo     | £100-120 |
| 340 ★ | Black and rose-carmine, fine with part original gum. S.G. 157, £375. Photo     | £100-120 |
| 341 △ | Black and rose-carmine, fine used on small piece. S.G. 157, £450. Photo        | £120-150 |

## Three Shillings

- |       |   |          |
|-------|---|----------|
| 342 ⑤ | Green and violet, two examples with large part original gum, one overprinted "SPECIMEN", both with small hinge remnants, fine. S.G. 158 | £80-100  |
| 343 ★ | Deep bluish green and deep purple (RSC "A"), four examples, fine mint   | £250-300 |



### Five Shillings

- 344 ★ Vermilion and deep green, fine unused with part original gum; also another example overprinted “SPECIMEN”, thinned at top. S.G. 159, £325+ £100-120



345



348



346

- 345 ○ (Deeper) Indian red and green (RSC “B”), fine used with part Umtali c.d.s. Photo £150-180
- 346 ★ Scarlet and pale yellow-green, fine with part original gum. S.G. 160, £350. Photo £100-120
- 347 ★ Scarlet and pale yellow-green; light vertical bend and hinge remnant, otherwise fine mint. S.G. 160, £350 £70-90
- 348 ○田 Scarlet and pale yellow-green block of four, lightly cancelled by Gwelo 6 May 1913 remainder cancellation, fine. S.G. 160, £800. Photo £300-400
- 349 ○ Scarlet and yellow-green, and crimson and yellow-green (2) with Gwelo and Salisbury remainder cancellations, fine. S.G. 160, 160a; £600 £150-180
- 350 ★ Crimson and yellow-green, two examples in slightly different shades, one with part original gum, the other with hinge remnant. S.G. 160a, £600 £120-150

### Seven Shillings and Sixpence

- 351 Carmine and pale blue, two examples, one overprinted “SPECIMEN” (heavily mounted), the other with small part original gum, both of fine appearance. S.G. 160b £150-180



352



353

- 352 ★ Carmine and pale blue, fine with part original gum. S.G. 160b, £650. Photo £180-220
- 353 ★ Carmine and pale blue with large part original gum; tiny black ink spot on reverse, otherwise fine mint. S.G. 160b, £650. Photo £150-180

Rhodesia, 1910-13 Double Head Issue, Seven Shillings and Sixpence - *contd.*



354



355



356

- |       |   |          |
|-------|---|----------|
| 354 ★ | Deep rose-red and (bright) grey-blue (RSC "C"), fine mint. Photo  | £200-250 |
| 355 ★ | Deep rose-red and (bright) grey-blue (RSC "C"); some gum thinning at top caused by hinge removal though of fresh and fine appearance. Photo | £100-120 |
| 356 ○ | Deep rose-red and (bright) grey-blue (RSC "C"), fine used with large part Bulawayo remainder cancellation. Photo                            | £150-180 |



357



358



359



360

- |       |   |          |
|-------|---|----------|
| 357 ○ | Deep rose-red and (bright) grey-blue (RSC "C"), fine used with part Bulawayo remainder cancellation. Photo  | £150-180 |
| 358 ○ | Deep rose-red and (bright) grey-blue (RSC "C"), fine used with part Bulawayo remainder cancellation. Photo  | £150-180 |
| 359 ○ | Deep rose-red and (bright) grey-blue (RSC "C"), fine used with part Salisbury remainder cancellation. Photo | £150-180 |
| 360 ★ | Carmine and light blue, fine mint. S.G. 161, £900. Photo  | £300-400 |



361



362



363

- |       |  |              |
|-------|--|--------------|
| 361 ★ | Carmine and light blue, hinge remnant and tiny gum thin at left, neither of which affects the fine appearance. S.G. 161, £900. Photo | £180-220     |
| 362 ★ | Carmine and bright blue, fine with large part original gum. Rare. B.P.A. Certificate (2006). S.G. 162, £5,000. Photo                 | £1,500-1,800 |
| 363 ○ | Carmine and bright blue, fine used. S.G. 162, £1,400. Photo  | £400-500     |

Ten Shillings



364



365



366

- 364 ⑤ Deep myrtle and orange overprinted “SPECIMEN”, small gum thin at top beside hinge remnants, otherwise fine. S.G. 163. Photo £80-100
- 365 ★ Deep myrtle and orange, fine mint. S.G. 163, £650. Photo £180-220
- 366 ○ Deep myrtle and orange, fine with part Salisbury remainder cancellation. S.G. 163, £300. Photo £80-100



367



368



369

- 367 ○ Deep myrtle and orange, fine with part Bulawayo remainder cancellation. S.G. 163, £300. Photo £80-100
- 368 ○ Deep myrtle and orange, fine and lightly cancelled. S.G. 163, £300. Photo £80-100
- 369 ★ Blue-green and orange, [2] with *long gash in Queen's ear*, fine mint. PFSA Certificate (1975). S.G. 164. Photo £350-450



370



371



372

- 370 ★ Blue-green and orange, fine with part original gum. S.G. 164, £400. Photo £100-120
- 371 ★ Blue-green and orange; hinge remnant, otherwise fine mint. S.G. 164, £400. Photo £80-100
- 372 ○ Blue-green and orange, [2] with *long gash in Queen's ear*, fine with part Bulawayo remainder cancel. S.G. 164. Photo £250-300



Rhodesia, 1910-13 Double Head Issue - *contd.*

One Pound



373



374



375



376

- 373 ☉ Crimson and slate-black overprinted "SPECIMEN", fine with part original gum. S.G. 166a. Photo £250-300
- 374 ★ Carmine-red and bluish black, small part original gum; some shortish perfs. at right, otherwise fine. S.G. 165, £1,600. Photo £200-250
- 375 ○ Carmine-vermilion and (paler) blue-black (RSC "A"), centrally cancelled by Bulawayo c.d.s. for 22 November 1917, fine. Photo £200-250
- 376 ○ Carmine-vermilion and (paler) blue-black (RSC "A"), cancelled by two part strikes of Registered Bulawayo c.d.s., fine. Photo £200-250



377



378



379



380

- 377 ★ Rose-scarlet and bluish black, fine with large part original gum. S.G. 166, £1,750. Photo £500-600
- 378 ◻ Rose-scarlet and bluish black block of four cancelled by Salisbury 17 April 1913 remainder cancellation, fine. S.G. 166, £1,500. Photo £500-600
- 379 ○ Rose-scarlet and bluish black horizontal pair, fine and very lightly cancelled. S.G. 166, £750. Photo £200-250
- 380 ○ Rose-scarlet and bluish black cancelled by large part Bulawayo 3 December 1912 remainder cancellation, fine. S.G. 166, £375. Photo £100-120



381



382



383

- 381 ○ Rose-scarlet and bluish black cancelled by part Bulawayo 12 February 1911 remainder cancellation, fine. S.G. 166, £375. Photo £100-120
- 382 ○ Rose-scarlet and bluish black with fine Gwelo 22 February 1912 remainder cancellation, fine. S.G. 166, £375. Photo £100-120
- 383 ○ Rose-scarlet and bluish black with part Salisbury 27 May 1913 remainder cancellation, fine. S.G. 166, £375. Photo £100-120



384



385

- 384 ○ Rose-scarlet and bluish black with part Salisbury cancellation, fine. S.G. 166, £375. Photo £100-120
- 385 ★ Crimson and slate-black, [2] with *long gash in Queen's ear*, fine with part original gum. S.G. 166a. Photo £1,000-1,200



386



387



388

- 386 ★ Carmine and blue-black (RSC "E"), the so-called bright carmine and bluish slate, fine with part original gum. Photo £500-600
- 387 ★ Carmine and blue-black (RSC "E"), the so-called bright carmine and bluish slate, fine with part original gum. Photo £500-600
- 388 ○ Lake-brown and (pale) slate-black, the so-called "Venetians" (RSC "F"), lightly cancelled by Registered Bulawayo single-ring d.s., fine. Photo £300-400

Rhodesia, 1910-13 Double Head Issue, One Pound - *contd.*

Perf. 15



389

389 ★

Red and black, lovely colour, hinge remnant, fine mint. A most collectable and highly attractive example of this very rare stamp. R.P.S. Certificate (1984). S.G. 179, £18,000. Photo

£6,000-8,000



390

390 ○

Red and black, fine and lightly cancelled. Rare. PFSA Certificate (1979). S.G. 179, £3,250. Photo

£800-1,000

## The Clandestine Roulettes

391 ★

A small group comprising 2½d., 3d. top right corner vertical pair, the upper stamp with partial double roulettes at right, 3/- (marginal), 5/- (marginal) and 10/-, fine

£150-200



392

392 ★田

3/- block of four, fine. Photo

£250-300

PROVENANCE:  
Apollonia, October 2007





393

393 ★田

5/- block of four from the upper right corner, fine. Photo

£250-300

PROVENANCE:

Apollonia, October 2007



394

394 ★田

10/- block of four [36-37/41-42], fine. Photo

£400-500

PROVENANCE:

Apollonia, October 2007



395

395 ★田

£1 block of four with margin at right, fine. Photo

£600-800

Rhodesia, 1910-13 Double Head Issue, The Clandestine Roulettes - *contd.*



396

396 ★

£1 from the long gash printing, a vertical pair [41/46] with roulettes omitted between, [46] with *King's extra curl*; the outer roulettes trimmed and slight staining at lower left, otherwise fine. Believed to be one of only two such pairs recorded, the other being without the variety. Photo

£1,500-2,000

PROVENANCE:

Apollonia, October 2007

## 1913-24 ADMIRAL ISSUE

### Single Plate - Perf. 14

397 ★

A mint range of shades comprising ½d. (20 including a vertical corner block of six from the upper right pane and a single imperforate between stamps and interpanneau margin at left), 1d. (17), 1½d. (13, one imperforate between stamp and margin at top and one imperforate between stamp and interpanneau margin at right), 2½d. (5) and perf 15 ½d. (6), 1d. (2), 1½d. (2) and 2½d. (8 including a block of four); also used ½d. (4), 1d. (13), 1½d. (7, one perf 15) and 2½d. Mostly fine

£300-400



398



399

398 ★田

½d. deep green block of four, variety **imperforate between horizontally**, fine mint. A rare multiple. S.G. 187a, £1,900. Photo

£800-1,000

399 ★

1d. rose-carmine horizontal pair, variety **imperforate between**, fine mint. S.G. 190a, £1,200. Photo

£400-500



401



400



402

- 400 ★ 1d. scarlet block of four, variety **imperforate between vertically**, the upper pair with a short perf. at left, otherwise fine mint with the lower pair unmounted. S.G. 194a, £2,800. Photo £800-1,000

- 401 ★ 1½d. bistre-brown horizontal pair, variety **imperforate between**, fine mint. S.G. 198a, £850. Photo £300-400

- 402 ★ 1½d. drab-brown horizontal pair, variety **imperforate between**, fine mint. S.G. 199a, £850. Photo £300-400

**Head Die I - Perf. 14**

- 403 ★ 2d. (2), 3d., 4d. (2), 5d. (3, one with short perf. at foot) and 6d., a few with hinge remnants, otherwise fine mint. S.G. 209-213, £438 £80-100

- 404 ○ 2d., 3d. (3 with a pair), 4d., 5d., 6d., 2/- plus perf 15 4d. (2) and 2/-, used and mostly fine. (11) £100-120



405



407

- 405 ★ 8d. violet and green [35], fine mint. Signed Holcombe on reverse. Rare. S.G. 213a, £6,000. Photo £2,500-3,000

PROVENANCE:  
Robert Gibbs, September 1988

**Head Die I - Perf. 15**

- 406 ★ 3d. (4), 4d. (2, one with some light stains on reverse), 6d. (4, one with some shortish perfs.) and 2/- (3, one with small thin), a few heavily mounted, otherwise fine mint. S.G. 215-218, £458 £80-100

**Head Die I - Perf. 14**

- 407 ★田 2/- black and brown marginal block of four, fresh and fine mint. S.G. 214, £640+. Photo £200-250



**Rhodesia, 1913-24 Admiral Issue - *contd.***

**Head Die II - Perf. 14**

- 408 ★ A mint range comprising 2d. (4), 3d. (5), 4d. (3), 5d. (4), 6d. (5), 8d. (4), 10d. (4), 1/- (5), 2/- (4), 2/6d. (3), 3/- (5), 5/- (5), 7/6d., 10/- (3) and £1 (both), shades, some with heavy hinge remnants though chiefly fine. (58) £1,200-1,500
- 409 ○ A used range comprising 2d., 3d. (3), 4d., 5d. (2), 6d. (2), 10d., 1/- (2), 2/- (3), 3/-, 5/- plus perf. 15 4d. (2), 10d., 1/-, 2/6d., 3/- and 7/6d., mostly fine. (24) £400-500
- 410 ★田 3/- brown and blue block of four, fresh and fine mint. S.G. 236b, £520 £150-180



411



412



413

- 411 ★ 7/6d. blackish purple and slate-black, fine mint. S.G. 240, £375. Photo £100-120
- 412 ○ 7/6d. blackish purple and slate-black, fine used. PFSA Certificate (1981). S.G. 240, £425. Photo £120-150
- 413 ○ 10/- deep rose-red and light green, fine used. PFSA Certificate (1981). S.G. 241, £350. Photo £100-120



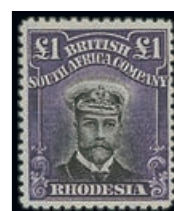
414



415



416



417

- 414 ★ £1 black and reddish purple, well-centred, fine mint. S.G. 242, £400. Photo £120-150
- 415 ○ £1 black and reddish purple, fine used. S.G. 242, £650. Photo £200-250
- 416 ○ £1 black and deep purple, fine used. Photo £150-180
- 417 ★ £1 black and violet, fine mint. S.G. 243, £475. Photo £120-150

**Head Die II - Perf. 15**

- 418 ★ A mint range comprising 2d. (3), 8d., 10d. (3), 1/- (3, one without gum), 2/6d. (3), 7/6d. (2) and 10/- (2), shades, generally fine. (17) £400-500



419



420



421

- 419 ★ 4d. black and red-orange, fine with large part original gum. Rare. B.P.A. Certificate (1990). S.G. 245, £1,600. Photo £500-600
- 420 ⊛ 3/- chocolate and blue, a lower right corner example with sheet number "48", fresh and fine unmounted mint. Rare in such condition. S.G. 250, £750. Photo £400-500
- 421 ★ 3/- chocolate and blue with large part original gum; light bend at top, otherwise fine. S.G. 250, £750. Photo £200-250



422

- 422 ★田 5/- blue and yellow-green block of four, fresh and fine mint. S.G. 251, £900. Photo £300-400



423



424



425

- 423 ★ 5/- blue and blue-green with part to large part original gum, lovely colours; one short perf. at foot, otherwise fine. Rare. S.G. 251a, £2,500. Photo £500-600
- 424 ○ £1 black and deep rose-lilac, fine used. S.G. 254, £1,600. Photo £400-500
- 425 ★ £1 black and deep purple with part original gum, fine and scarce. S.G. 254a, £3,000. Photo £800-1,000

Rhodesia, 1913-24 Admiral Issue - *contd.*

Head Die IIIA - Perf. 14



426



427



428



429

- |       |   |          |
|-------|---|----------|
| 426 ★ | 2d. deep black and brownish grey with large part original gum; central horizontal crease, otherwise fine. Rare. S.G. 255b, £2,500. Photo            | £300-400 |
| 427 ★ | 2/- deep black and yellow-brown with large part original gum (slightly browned and a fraction disturbed), fine. Very rare. S.G. 255j, £4,250. Photo | £500-600 |
| 428 ★ | 7/6d. maroon and indigo, fine mint. Very scarce. S.G. 255p, £1,000. Photo   | £300-400 |
| 429 ○ | 7/6d. maroon and indigo, fine used. S.G. 255p, £1,400. Photo  | £400-500 |



430



431



432

- |       |   |          |
|-------|---|----------|
| 430 ★ | 10/- carmine-lake and yellow-green, fine mint. S.G. 255q, £425. Photo                   | £120-150 |
| 431 ★ | 10/- carmine-lake and yellow-green with part original gum, fine. S.G. 255q, £425. Photo | £100-120 |
| 432 ★ | £1 deep black and violet-indigo, fine mint. S.G. 255r, £700. Photo                      | £200-250 |



433



434



435



436

- |       |  |          |
|-------|--|----------|
| 433 ★ | £1 deep grey-black and deep violet, fine mint. S.G.255t, £650. Photo                                 | £180-220 |
| 434 ★ | £1 deep grey-black and deep violet, heavy hinge remnant, otherwise fine mint. S.G. 255t, £650. Photo | £120-150 |
| 435 ○ | £1 deep grey-black and deep violet, fine used. S.G. 255t, £700. Photo                                | £200-250 |
| 436 ○ | £1 deep grey-black and deep violet, fine used. S.G. 255t, £700. Photo                                | £200-250 |



**Head Die IIIB - Perf. 14**

- 437 ★ A mint range comprising 2d. (4), 3d. (2), 4d. (4), 5d. (5), 6d. (5), 8d. (10), 10d. (3), 1/- (8), 2/- (2), 2/6d. (4) and 5/- (6), shades and mostly fine. (53) £600-800
- 437A ○ A used range comprising 2d. (7, one Die IIIA), 3d. (4 with a pair), 4d. (2), 5d. (2), 6d. (3), 8d., 10d. (2), 1/- (6 with a pair), 2/- (4, one Die IIIA), 2/6d. (3) and 5/- (3), generally fine. (37) £400-500



438



439

- 438 ★ 2d. black and grey-black vertical pair, variety **imperforate between stamp and margin at top**, unused with large part original gum; thin in margin, otherwise fine. Rare with only ten examples extant. S.G. 256. Photo £250-300
- 439 ○ 2d. black and grey-black lower right corner pair with sheet number "184", variety **imperforate between and between stamp and margin at right**, centrally cancelled by Bulawayo c.d.s., fine. Very rare. S.G. 256c, £6,500. Photo £3,000-4,000
- PROVENANCE:  
Robert Gibbs, September 1988
- 440 ★田 4d., 10d. and 2/6d. marginal blocks of four with imprint, 1/- (3, one from top left corner) blocks of four in two shades and 1/- lower left corner block of six (2x3), fresh and fine mint £200-250



441



442

- 441 ★ 3/- light brown and light blue, fine mint. S.G. 274c, £1,600. Photo £400-500
- 442 ★ £1 black and deep purple, fine mint. S.G. 279, £600. Photo £180-220

Rhodesia, 1913-24 Admiral Issue - *contd.*

Livingstone Provisional



443



444

- 443 ★ “Half/Penny” on 1d. rose-carmine, variety **surcharge inverted**, fine mint; also one with “nn” spaced wider and two normals, plus with hyphen (5 including a strip of three, the first stamp with “P” almost omitted. S.G. 280a, £1,200. Photo £300-400
- 444 ○ “Half/Penny” on 1d. rose-carmine, variety **surcharge inverted** and with “nn” spaced, [15], fine used. Very rare. B.P.A. Certificate (1993). S.G. 280a var. Photo £1,500-1,800
- PROVENANCE:  
Harry Birkhead  
Robert Gibbs, September, 1988

White Paper

- 445 ○ A used range comprising single plate, perf. 14 1d. (4) and 1½d. (2), perf. 15 1d. (2, one with PFSA certificate, 1980), and double plates, perf. 14 2d. (2), 3d., 4d., 6d., 8d., 10d., 1/- (2), 2/- (2), 2/6d., 5/-, and perf. 15 2d.; good to fine. (22) £200-250

White Paper, Single Plates

- 446 ★ Perf. 14 ½d. (8 with a pair), 1d. (5), 1½d. marginal vertical pair and single and perf. 15 ½d. (7 including a block of four) and 1½d. (6 including a block of four), fine mint. (29) £200-250

White Paper, Double Plates - Perf. 14

- 447 ★ A mint range comprising 2d. (4), 3d. (2), 4d. (2), 6d. (2), 8d. (4), 10d. (4), 1/- (3), 2/-, 2/6d. (7), 3/- (4), 5/- (4), 7/6d. (2), 10/- (2) and £1 (heavily mounted), shades, mostly fine. (42) £800-1,000
- 448 ★田 2/6d. ultramarine and sepia and 3/- red-brown and turquoise-blue blocks of four with central printer's guide marks, fine mint. S.G. 303, 305 £250-300



449

- 449 ★ £1 black and magenta, fine mint. S.G. 311, £700. Photo £200-250

**White Paper, Double Plates - Perf. 15**

- 450 ★ A mint range comprising 2d. (2), 4d. (8 including a block of four), 6d. (4), 8d. (4), 10d. (4), 1/- (4), 2/- (2), 2/6d. (3), 3/- (3) and 5/- (2), mostly fine. (36) £1,000-1,200
- 451 ★ 10d. bright ultramarine and carmine-red marginal block of four with imprint at foot, fresh and fine mint. S.G. 316, £340+ £100-120



452

- 452 ★ £1 black and deep magenta, fine mint. S.G. 322, £1,100. Photo £300-400

**Railway Stamps**

- 453 1903-05 Beira and Mashonaland 1d. carmine unused (creased) and used, 1906-27 Beira and Mashonaland 1d. orange unused, and ??? Beira and Mashonaland and Rhodesia Railways 1d. red unused (creased) £80-100

**Revenues**



454

- 454 ★ 1896-97 printer's file stamps comprising perf. 15 £30 purple and green (2 shades), £30 brown and green, £50 grey-green and orange, £100 vermillion and violet and £200 green and red, four are marginal and all with a punched hole as usual, £30 brown and green with "File Copy" in margin and £100 and £200 with order number and date in margin. A fine set of these high values. Mewett 75-79. Photo £500-600



Rhodesia - contd.

BRITISH COMMERCIAL BRANCH COMPANY.

No. 2505

Folio.....

Stamp £ 7/6

Rent £ 13/3

18th December 1916

QUITRENT RECEIPT.

RECEIVED from J. A. Walker per B. Hendrie

the Sum of Thirteen shillings & three pence

being in payment of 1 year's Rent on 21st Dec 1916

to 31st December, 1916

16th October 1916

for ACCOUNTANT.

ARGUS CO. 2384

455

455 △

1916 (18 Dec.) British South Africa Co. "QUITRENT RECEIPT" bearing Double Head 7/6d. carmine and bright blue with "BSA/C" perfin tied by "COMMERCIAL BRANCH/BULAWAYO" handstamp in violet, fine. Photo

£300-400

**Telegraph Stamps**

456 ★

1895 (Mar.) 2/6d., 5/- and 10/- vertical se-tenant strip of three with margins at top and at foot; horizontal crease through 5/-, otherwise fine unused. Rare. S.G. T1a, £3,500. Photo

£800-1,000



456

**Covers**

457 ☒

1896 (Feb.) and (Nov.) envelopes from the same correspondence to Richmond, Natal; the former bearing 1892 4d. vertical pair placed sideways and tied by "G" in diamond of bars with "UMTALI/RHODESIA" c.d.s. alongside; the latter bearing 1892 4d. tied by "UMTALI/RHODESIA" c.d.s. A fine pair

£120-150



458

458 ☒

1896 (17 June) envelope (tear across top left corner) "via Beira" to Cape Town, bearing 1896-97 Die II 1d. pairs (2), all cancelled by "KOPJE/SALISBURY" c.d.s., no other markings. Photo

£120-150



459



460

459 ☒

1897 (8 Mar.) envelope (creases) to Cape Town, bearing 1892-94 4d. and 1896 Die I 1d. both tied by "BULAWAYO/RHODESIA" single-ring d.s. and showing arrival datestamp on reverse. Photo

£120-150

460 ☒

1899 (21 Aug.) printed French missionary envelope from Barotsiland Mission to Geneva, bearing 1896-97 Arms Die II 6d. and 1897 Arms ½d., both tied by "SHESHEKE/N.W. RHODESIA" double-ring d.s. and showing Bulawayo transit d.s. on reverse. Attractive. Photo

£100-120

461 ☒

1909 (9 Sept.) 4d. registered envelope to England, uprated with 1909 5d. on 6d. and 7½d. on 2/6d., both tied by "ENKELDOORN/S. RHODESIA" double-ring d.s. and with black on pink registration label; also 1902 Arms 1d. stationery card from Bulawayo locally addressed and undateable Admiral ½d. card from Hartley to Durban

£70-90

## NORTHERN RHODESIA

- 462 1935-63 collection on pages including 1935 Silver Jubilee and 1946 Victory sets perforated "SPECIMEN" along with the issued sets both mint and used, 1963 Arms set to 20/- both mint and used, 1963 Postage Due set to 1/- used, also some Rhodesia & Nyasaland 1959-62 values to 2/6d. including some multiples; chiefly good to fine. Cat. £750+ £150-250
- 463 ⑤ 1925-29 Script ½d. to 20/- set of seventeen overprinted or perforated (3/-) "SPECIMEN"; large part original gum. S.G. 1s-17s, £1,200 £350-450
- 464 ⑤ 1925-29 Script ½d. to 20/- set less 3/-, each overprinted "SPECIMEN", large part original gum. S.G. 1s-17s, £1,200 £300-400



465

- 465 ★ 1935 Silver Jubilee 6d. slate and purple, variety **frame printed double, one albino**, very lightly mounted mint; slightly toned gum not affecting the appearance of this great rarity. B.P.A. Certificate (1980). S.G. 21a, £3,000. Photo £1,000-1,200



466

- 466 ⑥ 1953 Rhodes Centenary Exhibition 6d. master die proof on wove paper showing guidelines outside the design and with small security punch hole at upper right, fine and rare. Photo £1,000-1,500



1963 Arms Definitive Issue



467



469

467 ④

1d. Lusaka trial printing in pale grey blue, an imperforate block of six from the right of the sheet on gummed wove paper; fine. Photo

£400-500

*Note: This trial was made by the Government Printer in Lusaka during October/November 1963. This was at the request of the G.P.O. who feared that the new issue of stamps being printed by Harrison in the U.K. would not be delivered on time for the issue date in early December. As there was only a slight delay in delivery of the Harrison stamps, which were placed on sale on 10 December, the printing of these trial stamps was not pursued*

468 ★

A mint group with varieties comprising ½d. single and pair, 4d. and 1/- single, pair and block of six all with **misplaced value tablet** to varying degrees (also normal 1/- block of six for comparison), 1/3d. horizontal strip of six from the left of the sheet, with gradual shift of black from right to left resulting in a striking error on all stamps and 5/- with inking error at foot and normal for comparison; lightly mounted or unmounted mint

£300-400

469 ★

½d. bright violet, variety **value omitted**, fine mint. Rare. S.G. 75a, £1,200. Photo

£300-400



470

470 ☒

1d. light blue, variety **value omitted**, tied by 'NDOLA/ N. RHODESIA' double-ring datestamp on 1964 (11 Jan.) envelope addressed locally. S.G. 76a. Photo

£200-250

**Northern Rhodesia, 1963 Arms Definitive Issue - *contd.***

- 471 ★ 3d. yellow, 4d. green and 9d. yellow-brown; all variety **value omitted**, 4d. unmounted mint the others with hinge remainders. S.G. 78a, 79a, 81a, £850 £250-300



- 472 ⊕ 3d. yellow, variety **eagle printed double**, the double impression at foot of the stamp over "NORTHERN"; fine unmounted mint. Very rare. S.G. 78c, £4,500. Photo £2,000-2,500

- 473 ★ 3d. yellow, a mint group with varieties including **value and eagle omitted**, **eagle misplaced to foot**, blocks and eight (2) all with **misplaced (wandering) value tablets**, fine and lightly mounted mint some unmounted mint £300-400

- 474 ★ 3d. yellow, variety **eagle misplaced to foot**, a corner example from the lower left of the sheet, lightly mounted mint; a scarce and striking variety. Photo £250-300

- 475 ⊕ 3d. yellow, variety **eagle misplaced to foot**, a scarce and striking error, unmounted mint. Photo £300-350



- 476 ★田 3d. yellow block of four, variety **blue misplaced 1½mm. downwards**, a fine and dramatic error; lightly mounted on the left vertical pair. Photo £500-600

- 477 ⊕ 4d. green, variety **value omitted**, fine unmounted mint. S.G. 79a, £130 £70-90

- 478 ★ 6d. olive-green vertical strip of three, variety **value omitted**, mint and mounted on the upper stamp only. A fine and rare multiple. S.G. 80a, £2,550. Photo £1,000-1,500

- 479 ⊕田 6d. olive-green marginal blocks of four (2) and a single, all variety **value tablet misplaced to foot** to varying degrees, also a vertical pair with value tablet slightly misplaced to foot and pre-printing paper fold resulting in a very heavy creased line through both stamps; unmounted mint except the single example with hinge remnant. S.G. 80 var. £200-300

- 480 ⊕ 9d. yellow-brown, variety **value omitted**, fine unmounted mint. S.G. 81a, £600. Photo £300-400



481

482

483

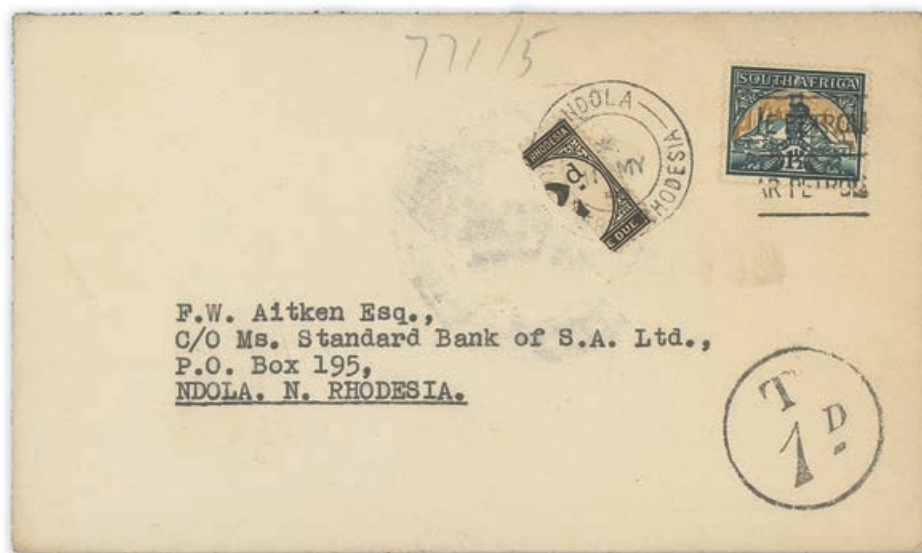
484

485

- 481 ☉ 9d. yellow-brown, variety **value and eagle omitted**, fine unmounted mint. S.G. 81b, £600. Photo £300-400
- 482 ★ 9d. yellow-brown, variety **value and eagle omitted**, lightly mounted mint. S.G. 81b, £600. Photo £200-250
- 483 ☉ 5/- magenta, variety **value omitted**, fine unmounted mint. Rare. S.G. 80a, £3,000. Photo £1,000-1,500
- 484 ★ 5/- magenta, variety **eagle misplaced upwards resulting in the eagle appearing largely white**, lightly mounted mint. A fine and striking variety. Photo £150-200
- 485 ★ 20/- blue, variety **value omitted**, large part original gum. Scarce. S.G. 88a, £1,200. Photo £300-400

**Postage Dues**

- 486 ☉ 1929-52 3d. grey-black block of six from the right of the sheet, variety **watermark St. Edward's crown**, offered with a normal block for comparison, mounted in the margin only; light tone spot to top, otherwise fine. S.G. D3ac, £425+ £100-150



487

- 487 ☐ 1950 (11 May) envelope from Cape Town to Ndola franked at 1½d. and showing circular 'T/ 1d.', bearing Postage Due 2d. **bisected vertically** and neatly tied by 'NDOLA/N.RHODESIA' c.d.s. S.G. D2a, £900. Photo £200-250



Northern Rhodesia, Postage Dues - *contd.*



488

488 ⑥

1963 4d. ultramarine, 6d. purple and 1/- light emerald imperforate plate proof horizontal pairs on gummed paper, unmounted; fine and scarce. Photo

£300-400



489

489 ⑥

1963 4d. ultramarine and 6d. purple imperforate plate proof horizontal pairs on gummed paper, lightly mounted; fine and scarce. Photo

£250-300



490

490 ★田

1963 1/- green block of four from the top of the sheet, variety **imperforate horizontally and imperforate between vertically**, heavily hinged in the margin and hinge remainder just touching upper pair, otherwise fine and scarce. S.G. D10b, £1,600. Photo

£400-600

**Postal Stationery**

491 ㊟

1924-32 collection with 1924 2d. light brown on cream size A (3) and B (3), 1930 1d. black brown on cream size B (2) and 1932 1½d. maroon size B (2) all overprinted "SPECIMEN"; 1924 2d. light brown on cream size A (2) and B, 1930 1d. black brown size A and 1932 1½d. maroon size A unused; and used (7) including 1924 1d. grey lilac Postcard to Germany uprated with ½d. green, 1930 1d. black brown envelope to Germany uprated with 2d. yellow-brown and 1932 1½d. maroon envelope to Nkana uprated with ½d. green; a useful group for the specialist (22)

£150-200

## Airmails

492 ④ ☒

1931-32 covers (30) comprising 1931 (17 Dec.) (7), 1932 (28 Jan.) (7) all carried on Imperial Airways First England-South Africa flights and mostly addressed within South or South West Africa, one from Athens to N. Rhodesia with Greek fancy cancellation and 1932 (29 Jan.) (16) carried on Imperial Airways First Flight Cape Town- London with various destinations including Cyprus, England, Greece, India, Italy, South Africa, Sudan, etc., various frankings and backstamps, all tied by Broken Hill datestamps; a useful group

£150-250



493

493 ④ ☒

1932 (28 Jan.) "City of Basra" cover carried on the inaugural flight of the Cape Town-London service bearing 1931 1d. and 4d. tied by Bulawayo c.d.s., the plane encountered a violent storm and crashed at Salisbury, the Pilot Capt. Gittins having to perform an emergency landing fifty miles from Broken Hill, the mail transferred to "City of Delhi" six days later, accompanied by two aerial photographs of the marooned "City of Delhi", a fascinating item of recovered crash mail. Photo

£200-250

494 ④ ☒

1932 (Feb.)-53 covers (23) carried on various flights from Southern Africa and including 1932 (26 Aug.) to Belgian Congo, 1932 (30 Sept.) registered to India (2, both with 'KARACHI-MADRAS/ 15.OCT.32/ FIRST AIRMAIL' boxed handstamp), 1933 (19 Jan.) to Athens, 1934 (31 July) to Madagascar, 1934 (Dec.) to Australia (2), 1935 Salisbury-Portuguese East Africa bearing 1935 Silver Jubilee set of four, 1938 Civil Air Transport Services document sent to England, etc.; a very useful group with some scarcer cancellations and handstamps noted

£200-300

Northern Rhodesia, Airmails - *contd.*

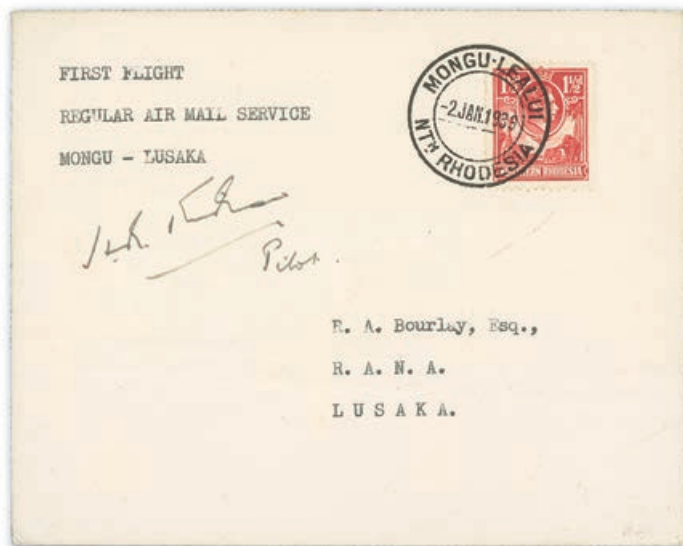


495

495 ①

1936 (Sept.) envelope, complete with contents, from England to Lusaka carried by the Imperial airliner "Boadicea" on the fateful September 25th flight from Croydon when the plane disappeared over the English Channel with the loss of both crew members, stamps floated off and showing French wreck cachet in red, the reverse with French "Postes, Telegraphes et Telephones" label strip of four tied by Lusaka arrival c.d.s. (16.11). Photo

£250-350



496

496 ①

1939 (2 Jan.) envelope from Mongu to Lusaka, typed inscription at upper left 'FIRST FLIGHT/ REGULAR AIR MAIL SERVICE/ MONGU - LUSAKA', bearing 1½d. tied by 'MONGU-LEALUT' c.d.s., signed by the pilot H. R. Kirkman, arrival c.d.s. on reverse; scarce. Photo

£150-200



## SOUTHERN RHODESIA

### 1924-29 Admiral Issue

- 497 ㊦ A collection of printer's file proofs in blocks of four, comprising head only in black (6), blue (3) and purple, the complete set of fourteen in imperforate blocks of four with various single or multiple security punch holes, each mounted on a Waterlow & Sons Ltd. printer's file example card; a fine and interesting group of these archival proofs £1,000-1,500
- 498 ㊦ B A collection of printer's file proofs comprising ½d. green, 1d. bright rose and 1½d. bistre-brown each in an imperforate block of ten from the upper right of the sheet with guideline at upper corner, various security punch holes in each and ink markings for correction on the 1½d. block; some peripheral creasing to the margins on each value and ½d. block with small tear in the margin at top. Attractive archival examples £300-400
- 499 ★ A small mint selection with **imperforate between stamp and margin** varieties, comprising ½d. green interpanneau vertical pairs (4, one with part imprint) and 1d. red interpanneau vertical pair; chiefly good to fine, one of the ½d. pairs and the 1d. pair with some toning £100-150



500



501

- 500 ★ 1½d bistre-brown vertical pair, variety **imperforate between**, lightly mounted on the upper stamp only; fine and very rare. B.P.A. Certificate (1978). S.G. 3b, £8,000. Photo £4,000-5,000
- 501 ㊦ 2/- black and brown vertical pair from the top of the sheet, variety **imperforate between the stamp and margin**; fine unmounted mint. A great rarity. S.G. 12 var. Photo £1,000-1,200
- Note: Buyers are referred to No. 2 of "The Rhodesian Philatelist" where Otto Peetoom wrote an article on the imperforate between stamp and margin varieties. Regarding the 2/- value he records three sheets, i.e. 30 examples possible. One of the sheets had the second horizontal row left intact, therefore each variety being in a vertical pair, as offered above, there being only ten of these vertical pairs possible*

Southern Rhodesia - *contd.*



502

502 ⑤

1931-37 ½d. to 5/- group of eleven values (no 1½d., 2d., 3d. or 9d.) perforated "SPECIMEN" (Samuel type B1) by the printers Bradbury Wilkinson for archival or publicity purposes; the 6d. defective at top, otherwise fine and fresh; rare. S.G. 15s-27s group. Photo

£600-800



503

503 ④

1931-37 5/- blue and blue-green from the foot of the sheet with part imprint, variety **printed on the gummed side**, a fresh and very fine example of this rarity. S.G. 27a, £8,500. Photo

£4,000-5,000

504 ⑦⑤

1932 2d. claret and violet perforated printer's sample stamp, overprinted 'WATERLOW & SONS LTD./ SPECIMEN', 1½mm. security punch hole through the value tablet at left; unmounted mint

£100-150

505 ⑦

1940 Golden Jubilee imperforate printer's file proofs, a group comprising the ½d. to 1/- set of eight, ½d., 1d., 2d., 4d., 6d. and 1/- vignette only, 1½d. and 3d. frame only, all in horizontal pairs with security punch holes and all mounted on a "Waterlow & Sons Ltd. Progressive Proof" card, an interesting group of these popular archival proofs

£400-500



506

506 ⑩

1953 ½d. to £1 less 4½d., thirteen imperforate proofs in issued colours with each affixed to small piece. A very rare and most attractive "set". Photo

£2,500-3,500



**Southern Rhodesia - *contd.***

**1964 Definitive Issue**

- 507 ⊕ ㊦ 4d. yellow-orange and deep green block of eight from the foot of the sheet with full imprint, variety **yellow-orange misplaced 1mm. to right**; fine unmounted mint being mounted in the margin at foot only. S.G. 96 var. £100-120
- 508 ⊕ ㊦ 9d. red-brown, yellow and olive-green, block of four from the top of the sheet, variety **red brown misplaced to right**, unmounted mint. S.G. 98 var. £200-300



509

- 509 ⊕ 1/- blue-green and ochre strip of six from the right of the sheet, the first stamp variety **blue-green omitted**, the second, third and fourth stamps with blue-green partially omitted to varying degrees, unmounted mint; a fine and visually striking multiple featuring this popular error. Pierron RH198MCa, S.G. 99a, £6,000+. Photo £3,000-4,000
- 510 ⊕ 1/3d. red, violet and yellow-green, variety **red and green misplaced downwards** and a block of four from the left of the sheet dramatically misperforated resulting in an imperforate at right error on all stamps, unmounted mint; striking £250-300



511

- 511 ⊕ 2/6d. ultramarine and vermilion horizontal pair, right-hand stamp variety **vermilion omitted**, unmounted mint; a fine example of this rare and popular variety. S.G. 102a, £8,500. Photo £3,000-4,000



512

- 512 ⊕ 2/6d. ultramarine and vermilion, variety **vermilion omitted**, unmounted mint from the top of the sheet; fine and rare. Offered with normal for comparison. S.G. 102a, £8,500. Photo £3,000-4,000

**Postage Due Stamps**



512A

- 512A 田 1951 4d. dull grey-green block of four, fine unmounted mint; a fine and scarce multiple. S.G. D6, £1,200. Photo

£400-500

**Revenue Stamps**



Ex 513

- 513 ★田 1931 3/- blue and brown to £50 orange and blue set of nine, each in a fresh unused block of four without gum; fine and rare multiples. Barefoot 9-17. Photo
- 514 ★田 1931 3/- blue and brown, 7/6d. black and purple, 10/- green and red and £1 purple and brown, each in an unused block of four without gum; fine and scarce multiples. Barefoot 9-12
- 515 ★田 1931 3/- blue and brown, 10/- green and red and £1 purple and brown, unused blocks of four without gum. Rare multiples. Barefoot 9, 11, 12
- 516 ○ 1931 £1 purple and black unused block of four, also 3/- blue and brown, 10/- green and red and £1 purple and black used, the 3/- and 10/- with manuscript and part oval datestamps and the £1 perforated "S R G". Barefoot 9, 11, 12

£2,000-3,000

£400-500

£200-300

£150-250

## RHODESIA AND NYASALAND



517



519



518



520



521

- |       |   |              |
|-------|---|--------------|
| 517 * | 1954-56 ½d. orange-red with vertical paper repair resulting in a 1.5mm. gap in the design; a visually arresting error, unmounted mint. S.G. 1 var. Photo  | £100-120     |
| 518 田 | 1954-56 1/- grey-black imperforate plate proof block of four from the left of the sheet on gummed paper, fine. Photo  | £200-300     |
| 519 * | 1959-62 1d. carmine-red and grey-black vertical pair, variety <b>carmine-red (vignette) omitted</b> , unmounted mint; fine. S.G. 19ac, £400. Photo  | £200-250     |
| 520 田 | 1959-62 3d. black and blue corner block of four from the upper right of the sheet with sheet number '285', variety <b>printed on the gummed side</b> , unmounted mint, a striking and rare multiple. S.G. 22b, £1,800+. Photo   | £1,000-2,000 |
| 521 △ | 1959-62 3d. black and blue, variety <b>printed on the gummed side, the unique example used on piece</b> of an envelope with glue at the Fort Jameson Post Office and tied by "FORT JAMESON/N. RHODESIA" double-ring datestamp for 31st July 1963; a visually striking exhibition piece. PFSA Certificate (1979) and accompanied by a typed letter from the District Postmaster at Fort Jameson. S.G. 22b unpriced used. Photo | £500-600     |

*Note: The letter from the Postmaster says in part: "...It would appear that most were sold over the counter on 30th/31st July 1963, when Africans complained about the poor quality of the gum on the stamps and the counter clerks stuck them on with Post Office glue, to my knowledge only one used copy on piece has turned up.."*



**Postage Due Stamps**



522



523

- 522 ☉ 1959 (c.) 1d. ultramarine handstamped “POSTAGE DUE” diagonally in black, a horizontal pair, [21-22] from the left of the sheet, unmounted mint, diagonal gum bend otherwise fine and very rare. B.P.A. Certificate (2011). Photo £400-500
- 523 ☉ 1959 (c.) 1d. ultramarine handstamped “POSTAGE DUE” diagonally in violet, a horizontal pair [17-18, from the lower left corner of the sheet], fresh unmounted mint, Fine and very rare. B.P.A. Certificate (2011). Photo £200-250



524



525



526



527

- 524 ☉ 1961 1d. vermillion block of six from the foot of the sheet, variety **imperforate between**, fine unmounted mint. A rare multiple. S.G. D1a, £2,400. Photo £800-1,000
- 525 ○ 1961 1d. vermillion horizontal pair, variety **imperforate between**, cancelled by part ‘SALISBURY/ RHODESIA’ double-ring datestamp; fine. S.G. D1a, £900. Photo £300-400

**RHODESIA (INDEPENDENCE)**

- 526 ☉ 1965 Independence 2/6d. horizontal pair, variety **imperforate**, unmounted mint, possibly very lightly mounted at one spot at upper right, barely discernible; fine. S.G. 358a, £900. Photo £250-350
- 527 ☉ 1965 Independence 2/6d. horizontal pair from the left of the sheet, variety **imperforate**, unmounted mint; fine. S.G. 358a, £900. Photo £300-400

## Rhodesia (Independence) - *contd.*

528 ★

1966-78 group of mint modern errors (8) comprising 1966 5/- black and blue vertical pair with misperforation, 1967 9d. horizontal pair, right-hand stamp with 'BODIN' for 'RODIN' variety, 1972 2½c. vertical pair from the right of the sheet with printing error resulting in a large patch with no printing covering both stamps, 1974 4c. Reedbuck block of eight, variety **imperforate between upper pair and margin**, 5c. Bushbuck strip of three, variety **imperforate between stamp and margin** (2), 12½c. Pink Sabi Star strip of five with part imprint and 1978 30c. Inyangombi Falls imperforate block of four from the upper left of the sheet; chiefly fine

£800-1,000

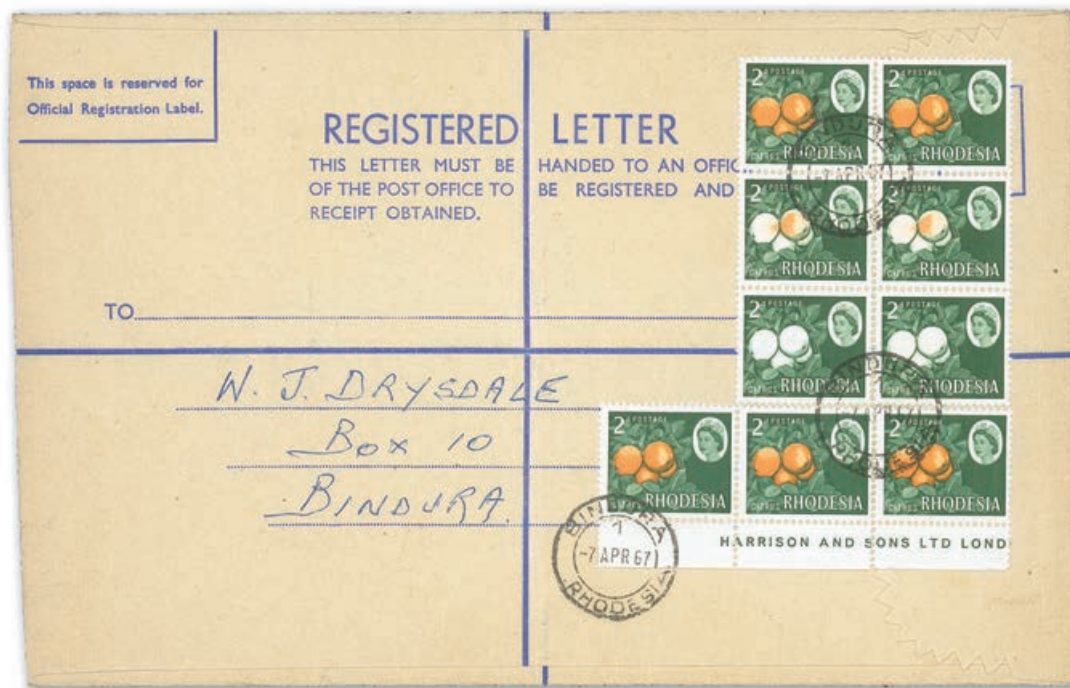


529

529 ⊛

1966 2d. yellow-orange and deep green, variety **yellow-orange omitted**, unmounted mint; tiny gum bend at foot not affecting the fine appearance of this rare variety. S.G. 375a, £3,250. Photo

£1,500-2,000



530

530 ☒

1966 2d. yellow-orange and deep green block of nine from the foot of the sheet with imprint, the third horizontal pair with variety **yellow-orange omitted** and the pair above with **yellow-orange partially omitted**, tied to 1967 (7 Apr.) formula registered envelope by three strikes of 'BINDURA/ RHODESIA' double ring datestamps sent locally; the block split along the vertical perforations where the adhesives cover the flap of the envelope. Fine examples of this error and a stunning philatelic cover showing the positions of this popular and rare variety. S.G. 375a, unlisted used. Photo

£2,000-3,000

PROVENANCE:  
Norman Levin



531

531 ☉

1966 3d. chocolate and pale blue vertical strip of eleven from the foot of the sheet showing a gradual omission of pale blue resulting in two stamps with pale blue partially omitted and one stamp with pale blue almost entirely omitted, unmounted mint; a stunning visually arresting error of exhibition quality. S.G. 376 var. Photo

£1,000-1,500

532 ★

1966 4d. emerald and sepia, variety **sepia** dramatically misplaced resulting in the emeralds appearing 1mm. upward, part original gum. S.G. 377 var.

£100-150

533 ☉

1966 Independence 9d. red-brown, yellow and olive-green vertical strip of six from the right of the sheet, variety **pair at foot without overprint**, unmounted mint; fine and rare. S.G. 365b, £4,500+. Photo

£1,500-2,500



533



Rhodesia (Independence) - *contd.*



534

534 ★

1966 Independence 1/- blue-green and ochre from the top of the sheet, variety **overprint double**, unmounted mint and offered with normal for comparison. Brandon Certificate (2005). S.G. 366a, £800. Photo

£300-400

PROVENANCE:  
Grosvenor, May 2010



535

535 ○

1966 Independence 2/6d. ultramarine and vermilion, variety **vermilion almost entirely omitted**, fine used. S.G. 369 var. Photo

£200-300



536

536 ★

1966 Independence 5/- light brown, bistre-yellow and light blue, variety **overprint double**, unmounted mint; offered with normal for comparison. B.P.A. Certificate (1981). S.G. 370a, £850. Photo

£400-500

PROVENANCE:  
Grosvenor, May 2010



537

- 537 ☼ 1966 Independence 5/- on 1/3d. black and bright blue vertical pair, variety **surcharge and overprint dramatically misplaced**, a striking error, unmounted mint. S.G. 373 var. Photo £500-600
- 538 ☉ 1968 (Nov.) 75th Anniv. of Mataberland set, 1969 (Jan.) Famous Rhodesians 1/6d., 1969 (May) Beira-Salisbury Railway set and 1969 (Sept.) Bridges set, all imperforate proofs on Mardon Printers presentation cards, fine £400-500

### Revenue Stamps



539



540

- 539 ☼ 1966 £100 orange and blue, a mint horizontal pair from the left of the sheet; full original gum, a few light tone spots not affecting the fine appearance. Rare. Barefoot 50. Photo £100-120
- 540 ○ 1966 6d. red and black, cancelled by crisp violet c.d.s., fine and rare with only ten or so examples known. Mewett 452, Barefoot 45. Photo £300-400
- 541 △ 1969 Memorandum of an Agreement of Lease bearing Southern Rhodesia 1954 Arms £10, £20 and £50 strip of three 1970 Addendum to Memorandum of Agreement bearing Southern Rhodesia 1954 Arms 2/- pair, 10/-, £2 (2), £20 (3) and Rhodesia 1966 £100, all tied by framed "COLLECTOR OF TAXES" violet datestamp, fine £100-120

**END OF THE SALE**



**SPINK BOOKS**

proudly presents  
the Stamps of the World  
Colouring Book

by  
**REBECCA GREEN**

# STAMPS OF THE WORLD

## *Colouring Book*

With over 18 full-page illustrations to colour in, each accompanied by a contextual history, alongside colouring activities to make and create, this book provides hours of fun for stamp enthusiasts of all ages.



ISBN: 978-1-912667-62-8  
RRP: £6.99

To place an order please visit [WWW.SPINKBOOKS.COM](http://WWW.SPINKBOOKS.COM),  
or contact the Spink Books Department  
Tel: +44 (0)20 7563 4119 | Email: [books@spink.com](mailto:books@spink.com)

**SPINK LONDON | 69 Southampton Row | Bloomsbury | WC1B 4ET**



# SPINK

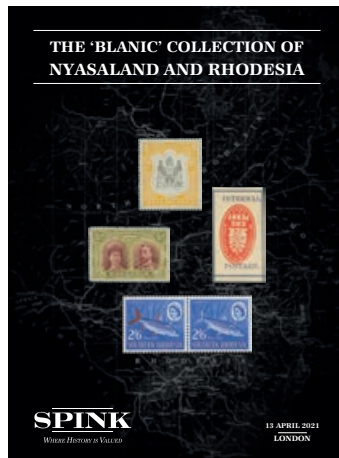
LONDON  
1666

69 Southampton Row, Bloomsbury,  
London WC1B 4ET  
tel: +44 (0)20 7563 4108/4103  
fax: +44 (0)20 7563 4037  
email: [auctionteam@spink.com](mailto:auctionteam@spink.com)

## WRITTEN BIDS FORM

This form should be sent or faxed to the Spink auction office in advance of the sale. References for new clients should be supplied in good time to be taken up before the sale. Bids received later than one hour before the start of the sale may not be processed.

YOU CAN ALSO BID IN REAL TIME ON SPINK LIVE.  
PLEASE DOWNLOAD SPINK LIVE APP FROM THE  
APP STORE OR VISIT [WWW.SPINK.COM](http://WWW.SPINK.COM),  
REGISTER AND LOG INTO THE SALE.



NAME \_\_\_\_\_

ADDRESS \_\_\_\_\_

POSTCODE \_\_\_\_\_

SALE TITLE

**The 'Blanic' Collection of  
Nyasaland and Rhodesia**

DATE

**Tuesday 13 April 2021.  
at 10.00 a.m.**

CODE NAME

**ZOMBA**

SALE NO.

**21021**

I request Spink, without legal obligations of any kind on its part, to bid on the following Lots up to the price given below. I understand that if my bid is successful the Purchase Price will be the sum of the final bid and Buyer's Premium as a percentage of the final bid, any VAT chargeable, also postage charge and a fee for paying by card. The Rate of Buyer's Premium is 20% of the final hammer price of each lot. I understand Spink will pursue me for payment for any successful bid. In addition, I understand and consent that Spink may share my personal details relating to the default with other auction houses and live bidding platforms to protect themselves from such defaults.

All bids shall be treated as offers made on the Terms and Conditions for Buyers printed in the catalogue. I also understand that Spink provides the service of executing bids on behalf of clients for the convenience of clients and that Spink will not be held responsible for failing to execute bids. If identical commission bids are received for the same Lot, the commission bid received first by Spink will take precedence. Please note that you will not be notified if there are higher written bids received.

**BIDDERS PLEASE NOTE OUR EXTENSION CLAUSES IN OUR TERMS AND CONDITIONS FOR BUYERS  
PLEASE PRINT CLEARLY IN BLOCK LETTERS AND ENSURE THAT BIDS ARE IN STERLING**

Lot Number (in numerical order)	Price Bid £ (excluding Buyer's Premium)

Lot Number (in numerical order)	Price Bid £ (excluding Buyer's Premium)

Lot Number (in numerical order)	Price Bid £ (excluding Buyer's Premium)

☐ Please hold my purchased lots for collection

TEL. HOME \_\_\_\_\_ TEL. OFFICE \_\_\_\_\_

FAX \_\_\_\_\_ E-MAIL \_\_\_\_\_

SIGNATURE \_\_\_\_\_ VAT NUMBER \_\_\_\_\_

☐ I agree to receive notifications about Spink auctions, news and events via email and direct mail

☐ I agree to receive marketing notifications related only to the following categories (*please select as appropriate*)

**Autographs / Banknotes / Bonds & Shares / Books / Coins / Comics / Handbags / Jewellery / Maps / Medals / Stamps / Watches /  
Whiskies & Spirits / Wine / Corporate News & Events**

We will use the personal information you provide to us as set out in our privacy notice available at [www.spink.com/privacy-policy](http://www.spink.com/privacy-policy)

Continued ...

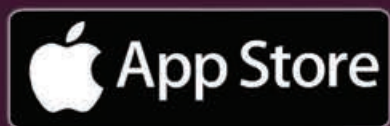


# SPINK LIVE

Live auction  
experience  
at your finger tips

**DOWNLOAD  
YOUR APP  
TODAY**

Available for  
iOS and Android



LONDON | NEW YORK | HONG KONG | SINGAPORE | SWITZERLAND



#SPINK\_AUCTIONS    WWW.SPINK.COM



# TERMS AND CONDITIONS FOR BUYERS

These conditions set out the terms on which we (**Spink and Son Limited** of 69 Southampton Row, Bloomsbury London WC1B 4ET (company no. 04369748)) contract with you (**Buyer**) either as agent on behalf of the Seller or as principal if we are the Seller. You should read these conditions carefully.

## 1 DEFINITIONS

The following definitions apply in these conditions:

**Margin Scheme and Auctioneers' Scheme**

**Buyer's Premium Certificate of Authenticity Expert Committee**

**Forgery**

means VAT schemes as defined by HM Revenue & Customs;

means the charge payable by you as a percentage of the Hammer Price, at the rates set out in clause 5.1 below;

means a certificate issued by an Expert Committee confirming the authenticity of a Lot;

means a committee of experts to whom a Lot may be sent for an extension in accordance with clause 3.4.3;

means a Lot constituting an imitation originally conceived and executed as a whole with a fraudulent intention to deceive as to authorship, origin, age, period, culture or source where the correct description as to such matters is not reflected by the description in the catalogue and which at the date of the auction had a value materially less than it would have had if it had been in accordance with the description in the catalogue. Accordingly, no Lot shall be capable of being a Forgery by reason of any damage and/or restoration work of any kind (including re-enamelling);

means the amount of the highest bid accepted by the auctioneer in relation to a Lot;

**Hammer Price**

**Lot**

means any item deposited with us for sale at auction and, in particular, the item or items described against any Lot number in any catalogue;

**Reserve**

**Seller**

the amount below which we agree with the Seller that the Lot cannot be sold;

means the owner of the Lot being sold by us;

**Spink Group**

Spink and Son Limited, our subsidiaries and associated companies.

**VAT**

value added tax chargeable under VAT and any similar replacement or additional tax; and

**VAT Symbols**

means the symbols detailing the VAT status of the Lot details of which are set out at the back of the catalogue.

## 2 SPINK'S ROLE AS AGENT

2.1 All sales undertaken by us either at auction or privately are undertaken either as agent on behalf of the Seller or from time to time, as principal if we are the owner of the Lot. Please note that even if we are acting as agent on behalf of the Seller rather than as principal, we may have a financial interest in the Lot.

2.2 The contract for the sale of the Lot will be between you and the Seller.

2.3 The Seller's sale of the Lot to you is subject to any terms and conditions, disclaimers or exclusions included with any promotional material or catalogue descriptions for the Lot, or otherwise notified to you by the Seller or us on their behalf.

## 3 BEFORE THE SALE

### 3.1 Examination of goods

You are strongly advised to examine personally any goods in which you are interested, before the auction takes place. Condition reports are usually available on request. We provide no guarantee to you other than in relation to Forgeries, as set out in clause 5.13 of these Terms and Conditions.

### 3.2 Catalogue descriptions

3.2.1 Statements by us in the catalogue or condition report, or made orally or in writing elsewhere, regarding the authorship, origin, date, age, size, medium, attribution, genuineness, provenance, condition or estimated selling price of any Lot are merely statements of opinion, and are not to be relied on as statements of definitive fact. Catalogue and web illustrations are for guidance only, and should not be relied on either to determine the tone or colour of any item. No lot shall be rejected on the grounds of inaccurate reproduction. No lot illustrated in the catalogue and online shall be rejected on the grounds of cancellation, centring, margins, perforation or other characteristics apparent from the illustration. Estimates of the selling price should not be relied on as a statement that this price is either the price at which the Lot will sell or its value for any other purpose.

3.2.2 Many items are of an age or nature which precludes their being in perfect condition and some descriptions in the catalogue or given by way of condition report make reference to damage and/or restoration. We provide this information for guidance only and the absence of such a reference does not imply that an item is free from defects or restoration nor does a reference to particular defects imply the absence of any others.

3.2.3 Other than as set out in clause 5.13, and in the absence of fraud, neither the Seller nor we, nor any of our employees or agents, are responsible for the correctness of any statement as to the authorship, origin, date, age, attribution, genuineness or provenance of any Lot nor for any other errors of description or for any faults or defects in any Lot. Every person interested should exercise and rely on his own judgment as to such matters.

### 3.3 Your Responsibility

You are responsible for satisfying yourself as to the condition of the goods and the matters referred to in the catalogue description.

### 3.4 Extensions – Stamps only

3.4.1 If you wish to obtain an expert opinion or Certificate of Authenticity on any Lot (other than a mixed Lot or Lot containing undescribed stamps) you must notify us in writing not less than forty-eight hours before the time fixed for the commencement of the first session of the sale. If accepted by us, such request shall have the same effect as notice of an intention to question the genuineness or description of the Lot for the purposes of clause 5.13 (Refund in the case of Forgery) of these Terms and Conditions and the provisions of clause 5.13 (Refund in the case of Forgery) shall apply accordingly.

3.4.2 Notice of a request for an expert opinion or Certificate of Authenticity must give the reason why such opinion is required and specify the identity of your proposed expert which will be subject to agreement by us. We reserve the right, at our discretion, to refuse a request for an expert opinion or Certificate of Authenticity including (without limitation) where the proposed expert is not known to us.

3.4.3 If we accept a request for an expert opinion or Certificate of Authenticity we will submit the Lot to the Expert Committee. You acknowledge and accept that the length of time taken by an Expert Committee to reach an opinion will vary depending on the circumstances and in any event is beyond our control.

3.4.4 We will not accept a request for an extension on account of condition. Any Lot described in the catalogue as having faults or defects may not be returned even if an expert opinion or Certificate of Authenticity cites other faults or defects not included in the catalogue description, other than in the case of a Forgery.

3.4.5 Should Spink accept a request for an extension under the foregoing provisions of this paragraph, the fact may be stated by the Auctioneer from the rostrum prior to the sale of the Lot.

3.4.6 It should be noted that any stamp accompanied by a Certificate of Authenticity is sold on the basis of that Certificate only and not on the basis of any other description or warranty as to authenticity. No request for an extension will be accepted on such a stamp and the return of such a stamp will not be accepted.

3.4.7 If you receive any correspondence from the Expert Committee in relation to the Lot, including but not limited to a Certificate of Authenticity, you must provide us with copies of such correspondence no later than 7 days after you receive such correspondence.

## 4 AT THE SALE

### 4.1 Refusal of admission

Our sales usually take place on our own premises or premises over which we have control for the sale, and we have the right, exercisable at our complete discretion, to refuse admission to the premises or attendance at an auction.

### 4.2 Registration before bidding

All bidders must be registered either by completing a registration form or creating an account online. Please be aware that we usually require buyers to present identification before making a bid at auction, undergo a credit check or provide a trade reference.

If you have not bid successfully with Spink in the past, or you are registering with us for the first time, we reserve the right to require a deposit of up to 50% of the amount you intend to spend. Such deposit will be deducted from your invoice should you be successful. If you are unsuccessful at auction, your deposit will be returned by the same means it was paid to Spink.

Some lots may be designated, prior to the auction, as "Premium Lots", which means a deposit may be required before placing a bid on the item for sale. Information will be posted on our website in such an event.

### 4.3 Bidding as Principal

When making a bid (**whether such bids are made in person or by way of telephone bids operated by Spink, commission or online or email bids**), you will be deemed to be acting as principal and will be accepting personal liability, unless it has been agreed in writing, at the time of registration, that you are acting as agent on behalf of a third party buyer acceptable to us.

### 4.4 Commission Bids

If you give us instructions to bid on your behalf, by using the form provided in our catalogues or via our website, we shall use reasonable endeavours to do so, provided these instructions are received not later than 24 hours before the auction. If we receive commission bids on a particular Lot for identical amounts, and at auction these bids are the highest bids for the Lot, it will be sold to the person whose bid was received first. Commission bids are undertaken subject to other commitments at the time of the sale, and the conduct of the auction may be such that we are unable to bid as requested. Since this is undertaken as a free service to prospective buyers on the terms stated, we cannot accept liability for failure to make a commission bid. You should therefore always attend personally if you wish to be certain of bidding.

- 4.5 On-line Bidding**  
We offer internet services as a convenience to our clients. We will not be responsible for errors or failures to execute bids placed on the internet, including, without limitation, errors or failures caused by (i) a loss of internet connection by either party for whatever reason; (ii) a breakdown or problems with the online bidding software and/or (iii) a breakdown or problems with your internet connection, computer or system. Execution of on-line internet bids on [www.spink.com](http://www.spink.com) and Spink Live is a free service undertaken subject to other commitments at the time of the auction and we do not accept liability for failing to execute an online internet bid or for errors or omissions in connection with this activity.
- 4.6 Telephone Bids**  
If you make arrangements with us not less than 24 hours before the sale, we shall use reasonable endeavours to contact you to enable you to participate in bidding by telephone, but in no circumstances will we be liable to either the Seller or you as a result of failure to do so.
- 4.7 Currency Converter**  
At some auctions, a currency converter will be operated, based on the one month forward rates of exchange quoted to us by Barclays Bank Plc or any other appropriate rate determined by us, at opening on the date of the auction. Bidding will take place in a currency determined by us, which is usually sterling for auctions held in London. The currency converter is not always reliable, and errors may occur beyond our control either in the accuracy of the Lot number displayed on the converter, or the foreign currency equivalent of sterling bids. We shall not be liable to you for any loss suffered as a result of you following the currency converter.
- 4.8 Video images**  
At some auctions there will be a video screen. Mistakes may occur in its operation, and we cannot be liable to you regarding either the correspondence of the image to the Lot being sold or the quality of the image as a reproduction of the original.
- 4.9 Bidding Increments**  
Bidding generally opens below the low estimate and advances in the following order although the auctioneer may vary the bidding increments during the course of the auction. The normal bidding increments are:
- |                    |                                  |
|--------------------|----------------------------------|
| Up to £100         | by £5                            |
| £100 to £300       | by £10                           |
| £300 to £600       | £320-£350-£380-£400 etc.         |
| £600 to £1,000     | by £50                           |
| £1,000 to £3,000   | by £100                          |
| £3,000 to £6,000   | £3,200-£3,500-£3,800-£4,000 etc. |
| £6,000 to £10,000  | by £500                          |
| £10,000 to £20,000 | by £1,000                        |
| £20,000 and up     | Auctioneer's discretion          |
- 4.10 Bidding by Spink**  
4.10.1 We reserve the right to bid on Lots on the Seller's behalf up to the amount of the Reserve (if any), which will never be above the low estimate printed in the auction catalogue.  
4.10.2 The Spink Group reserves the right to bid on and purchase Lots as principal.  
4.10.3 Lots with this symbol (Ⓢ) indicate that a party has provided Spink with an irrevocable bid on the lot that will be executed during the sale at a value that ensures that the lot will sell. The irrevocable bidder, who may bid in excess of the irrevocable bid, will be compensated based on his bid in the event he or she is not the successful bidder or may receive a fixed fee in the event he or she is the successful bidder. If the irrevocable bidder is the successful bidder, the fixed fee for providing the irrevocable bid may be netted against the irrevocable bidder's obligation to pay the full purchase price for the lot. If the irrevocable bid is not secured until after the printing of the auction catalogue, a pre-sale announcement will be made indicating that there is an irrevocable bid on the lot.  
If you are interested in placing an irrevocable bid in an auction, please contact us at [chairmanoffice@spink.com](mailto:chairmanoffice@spink.com). Typically, only some of the lots with an estimate, which must exceed £100,000 or equivalent in other currencies are open to irrevocable bids.
- 4.11 The Auctioneer's Discretion**  
The auctioneer has the right at his absolute discretion to refuse any bid to advance the bidding in such manner as he may decide to withdraw or divide any Lot, to combine any two or more Lots and, in the case of error or dispute, to put an item up for bidding again.
- 4.12 Successful Bid**  
Subject to the auctioneer's discretion, the striking of his hammer marks the acceptance of the highest bid, provided always that such bid is higher than the Reserve (where applicable), and the conclusion of a contract for sale between you and the Seller.
- 4.13 After Sale Arrangements**  
If you enter into any private sale agreements for any Lot with the Seller within 60 days of the auction, we, as exclusive agents of the Seller reserve the right to charge you the applicable Buyer's Premium in accordance with these Terms and Conditions, and the Seller a commission in accordance with the terms of the Seller's agreement.
- 4.14 Return of Lot**  
4.14.1 Once your bid has been accepted for a Lot then you are liable to pay for that Lot in accordance with these Terms and Conditions. If there are any problems with a Lot then you must notify us within 7 days of receipt of the Lot, specifying the nature of the problem. We may then request that the Lot is returned to us for inspection. Save as set out in clause 5.13, the cancellation of the sale of any Lot and the refund of the corresponding purchase price is entirely at our sole discretion. We will not normally exercise that discretion if the Lot is not received by us in the same condition that it was in at the auction date.
- 4.14.2 No lot may be returned on account of condition if the condition was stated by a third party grading company (including, but not limited to PCGS, NGC, ANACS, ICG, PMG, WBG, Legacy Currency Grading).
- 5 AFTER THE AUCTION**
- 5.1 Buyer's Premium and other charges**  
In addition to the Hammer Price, you must pay us the Buyer's Premium at a rate of 20% of the final Hammer price of each lot, postage charge and a fee for paying by card.
- 5.2 Value Added Tax**  
Other than in respect of Zero-rated Lots (o) VAT is chargeable on the Hammer price and the Buyer's premium of daggered (†) and (Ω) lots at the standard rate (currently 20%), and on lots marked (x) at the reduced rate (currently 5% on the Hammer price and 20% on the Buyer's premium). VAT on Margin scheme lots (identified by the absence of any VAT symbol next to the lot number) is payable at 20% on the Buyer's premium only.
- 5.3 VAT Refunds – Buyers from outside the UK**  
**General**  
5.3.1 As we remain liable to account for VAT on all Lots unless they have been exported outside the UK within 3 months of the date of sale, you will generally be asked to deposit all amounts of VAT invoiced. However, if a Spink nominated shipper is instructed, then any refundable VAT will not be collected. In all other cases credits will be made when proof of export is provided. If you export the Lot outside the UK yourself you must obtain shipping documents from the Shipping Department for which a charge of £50 will be made.  
5.3.2 If you export the Lot you must return the valid proof of export certificate to us within 3 months of the date of sale. If you fail to return the proof of export certificate to us within such period and you have not already accounted to us for the VAT, you will be liable to us for the full amount of the VAT due on such Lot and we shall be entitled to invoice you for this sum.  
5.3.3 To apply for a refund of any VAT paid, the proof of export certificate must be sent to our Shipping Department clearly marked 'VAT Refund' within 3 months of the date of sale. No payment will be made where the total amount of VAT refundable is less than £50 and Spink will charge £50 for each refund processed.  
5.3.4 Where a Lot is included within the Margin Scheme and Auctioneers' Scheme and evidence of export from the UK is produced within 3 months of the date of sale, the VAT on Buyer's Premium may be refunded.  
5.3.5 Where the Lot is marked as a Daggered (†) Lot the VAT charged on the Hammer Price may be refunded where evidence of export from the UK is produced within 3 months of the date of sale. A refund of VAT charged on the Buyer's Premium can also be made on receipt of proof of business as a collectibles dealer.  
5.3.6 Where the Lot is marked as an Omega (Ω) Lot or an Import VAT (x) Lot and evidence of export from the UK is produced within 3 months of the date of sale, the VAT charged on both the Hammer Price and Buyer's Premium may be refunded. Where required, we can advise you on how to export such Lots as a specific form of export evidence is required. Where we advise you on the export of the Lots, please be aware that the ultimate responsibility in respect of obtaining a valid proof of export certificate will lie with you and we will not be responsible for your failure to obtain such certificate.  
5.3.7 Lot marked as Investment Gold (g) is exempt from VAT on Hammer price. A refund of VAT charged on the Buyer's Premium can be made on receipt of proof of business as a collectibles dealer and where evidence of export from the UK is produced within 3 months of the date of sale.
- 5.4 Payment**  
5.4.1 You must provide us with your full name and permanent address and, if so requested, details of the bank from which any payments to us will be made. You must pay the full amount due (comprising the Hammer Price, the Buyer's Premium and any applicable VAT) within seven days after the date of the sale. This applies even if you wish to export the Lot and an export licence is (or may be) required.  
5.4.2 You will not acquire title to the Lot until all amounts due have been paid in full. This includes instances where special arrangements were made for release of Lot prior to full settlement.  
5.4.3 Payment should be made in sterling by one of the following methods:  
(i) Direct bank transfer to our account details of which are set out on the invoice. All bank charges shall be met by you. Please ensure that your client number is noted on the transfer.  
(ii) By cheque or bank draft made payable to Spink and Son Ltd and sent to Spink at 69 Southampton Row, Bloomsbury, London WC1B 4ET. Please note that the processing charges for payments made by cheques or bank drafts drawn on a non-U.K bank shall be met by you. Please ensure that the remittance slip printed at the bottom of the invoice is enclosed with your payment.

- (iii) By Visa or Mastercard. All Corporate cards regardless of origin and Consumer debit and credit cards issued outside the EU are subject to a fee of 3%. For all card payments there are limits to the amounts we will accept depending on the type of card being used and whether or not the cardholder is present.
- 5.4.4 Payments should be made by the registered buyer and not by third parties, unless it has been agreed at the time of registration that you are acting as an agent on behalf of a third party.
- 5.5 **Invoices**  
Invoices may consist of one or more pages and will show: Zero rated Lots (o); no symbol Lots sold under the Margin Scheme and Auctioneers' Scheme; Lots marked (g) special scheme Investment Gold; Daggered Lots (†), imported Lots marked (x) and (Ω).
- 5.6 **Collection of Purchases**  
5.6.1 Unless specifically agreed to the contrary, we shall retain lots purchased until all amounts due to us, or to the Spink Group, have been paid in full. Buyers will be required to pay for their lots when they wish to take possession of the same, which must be within 7 days of the date of the sale, unless prior arrangements have been made with Spink. Without prior agreement, lots will not be released until cleared funds are received with regard to payments made by cheque.  
5.6.2 Unless we notify you to the contrary, items retained by us will be covered in accordance with our policy which is available for inspection at our offices from the date of sale for a period of seven days or until the time of collection, whichever is sooner. After seven days or from the time of collection, whichever is the earlier, the Lot will be entirely at your risk.  
5.6.3 Our policy will not cover and we are unable to accept responsibility for damage caused by woodworm, changes in atmospheric conditions or acts of terrorism.
- 5.7 **Notification**  
We are not able to notify successful bidders by telephone. While Invoices are sent out by email or mail after the auction we do not accept responsibility for notifying you of the result of your bid. You are requested to contact us by telephone or in person as soon as possible after the auction to obtain details of the outcome of your bids to avoid incurring charges for late payment.
- 5.8 **Packing and handling**  
5.8.1 We shall use all reasonable endeavours to take care when handling and packing a purchased Lot but remind you that after seven days or from the time of collection, whichever is sooner, the Lot is entirely at your risk. Our postage charges are set out at the back of the catalogue.  
5.8.2 It is the responsibility of the Buyer to be aware of any Import Duties that may be incurred upon importation to the final destination. Spink will not accept return of any package in order to avoid these duties. The onus is also on the Buyer to be aware of any Customs import restrictions that prohibit the importation of certain collectibles. Spink will not accept return of the Lot(s) under these circumstances. Spink will not accept responsibility for Lot(s) seized or destroyed by Customs.  
5.8.3 If the Buyer requires delivery of the Lot to an address other than the invoice address this will be carried out at the discretion of Spink.
- 5.9 **Recommended packers and shippers**  
If required our shipping department may arrange shipment as your agent. Although we may suggest carriers if specifically requested, our suggestions are made on the basis of our general experience of such parties in the past and we are not responsible to any person to whom we have made a recommendation for the acts or omissions of the third parties concerned.
- 5.10 **Remedies for non-payment or failure to collect purchases**  
5.10.1 If you fail to make payment within seven days of your stipulated payment date set out in your invoice, we shall be entitled to exercise one or more of the following rights or remedies:  
5.10.1.1 to charge interest at the rate of 2% per month compound interest, calculated on a daily basis, from the date the full amount is due;  
5.10.1.2 to set off against any amounts which the Spink Group may owe you in any other transaction the outstanding amount remaining unpaid by you;  
5.10.1.3 we may keep hold of all or some of your Lots or other property in the possession of the Spink Group until you have paid all the amounts you owe us or the Spink Group, even if the unpaid amounts do not relate to those Lots or other property. Following fourteen days' notice to you of the amount outstanding and remaining unpaid, the Spink Group shall have the right to arrange the sale of such Lots or other property. We shall apply the proceeds in discharge of the amount outstanding to us or the Spink Group, and pay any balance to you;  
5.10.1.4 where several amounts are owed by you to the Spink Group in respect of different transactions, to apply any amount paid to discharge any amount owed in respect of any particular transaction, whether or not you so direct;  
5.10.1.5 to reject at any future auction any bids made by you or on your behalf or obtain a deposit from you before accepting any bids.  
5.10.2 If you fail to make payment within thirty-five days, we shall in addition be entitled:  
5.10.2.1 to cancel the sale of the Lot or any other item sold to you at the same or any other auction;  
5.10.2.2 to arrange a resale of the Lot, publicly or privately, and, if this results in a lower price being obtained, claim the balance from you together with all reasonable costs including a 20% seller's commission, expenses, damages, legal fees, commissions and premiums of whatever kind associated with both sales or otherwise, incurred in connection with your failure to make payment;  
5.10.2.3 when reselling the Lot, place a notice in our catalogue stating that you successfully purchased the Lot at auction but have subsequently failed to pay the Hammer Price of the Lot; or  
5.10.2.4 take any other appropriate action as we deem fit.  
5.10.3 If you fail to collect within fourteen days after the sale, whether or not payment has been made, you will be required  
5.10.3.1 to pay a storage charge of £2 per item per day plus any additional handling cost that may apply.  
5.10.3.2 you will not be entitled to collect the Lot until all outstanding charges are met, together with payment of all other amounts due to us.
- 5.11 **Use of Default Information**  
If you fail to make payment for a Lot in accordance with these Terms and Conditions:  
5.11.1 we reserve the right to refuse you the right to make bids for any future auction irrespective of whether previous defaults have been settled; and  
5.11.2 you acknowledge that we may (as necessary for our legitimate interests those of other auctioneers and live bidding platforms in referencing customers and avoiding customer defaults) disclose details of such default to other auctioneers and live bidding platforms, which will include your name, address, nature of the default and the date of the default.  
Auctioneers or live bidding platforms who receive details of the default may rely on such information when deciding whether to enter into a transaction with you in the future.
- 5.12 **Export Licence**  
5.12.1 If required we can, at our discretion, advise you on the detailed provisions of the export licensing regulations. Where we advise you in relation to export licensing regulations the ultimate responsibility in respect of any export will lie with you and we will not be responsible for your failure to apply for any necessary licences.  
5.12.2 If the Lot is going to be hand carried by you, you may be required to produce a valid export licence to us or sign a waiver document stating that a licence will be applied for.  
5.12.3 You should always check whether an export licence is required before exporting. Export licences are usually obtained within two or three weeks but delays can occur.  
5.12.4 Unless otherwise agreed by us in writing, the fact that you wish to apply for an export licence does not affect your obligation to make payment within seven days nor our right to charge interest on late payment.  
5.12.5 If you request that we apply for an export licence on your behalf, we shall be entitled to recover from you our disbursements and out of pocket expenses in relation to such application, together with any relevant VAT.  
5.12.6 We will not be obliged to rescind a sale nor to refund any interest or other expenses incurred by you where payment is made by you despite the fact that an export licence is required.
- 5.13 **Refund in the case of Forgery**  
5.13.1 A sale will be cancelled, and the amount paid refunded to you if a Lot (other than a miscellaneous item not described in the catalogue) sold by us proves to have been a Forgery. We shall not however be obliged to refund any amounts if either (a) the catalogue description or saleroom notice at the auction date corresponded to the generally accepted opinion of scholars or experts at that time, or fairly indicated that there was a conflict of opinions, or (b) it can be demonstrated that the Lot is a Forgery only by means of either a scientific process not generally accepted for use until after publication of the catalogue or a process which at the date of the auction was unreasonably expensive or impracticable or likely to have caused damage to the Lot. Furthermore, you should note that this refund can be obtained only if the following conditions are met:  
5.13.1.1 you must notify us in writing, within seven days of the receipt of the Lot(s), that in your view the Lot concerned is a Forgery;  
5.13.1.2 you must then return the item to us within fourteen days from receipt of the Lot(s), in the same condition as at the auction date; and  
5.13.1.3 as soon as possible following return of the Lot, you must produce evidence satisfactory to us that the Lot is a Forgery and that you are able to transfer good title to us, free from any third party claims.  
5.13.1.4 you must provide to us all evidence obtained by you that a Lot is a Forgery no later than 7 days after you receive such evidence.  
5.13.2 In no circumstances shall we be required to pay you any more than the amount paid by you for the Lot concerned and you shall have no claim for interest.  
5.13.3 The benefit of this guarantee is not capable of being transferred, and is solely for the benefit of the person to whom the original invoice was made out by us in respect of the Lot when sold and who, since the sale, has remained the owner of the Lot without disposing of any interest in it to any third party.  
5.13.4 We shall be entitled to rely on any scientific or other process to establish that the Lot is not a Forgery, whether or not such process was used or in use at the date of the auction.



## 6 LIABILITY

Nothing in these Terms and Conditions limits or excludes our liability for:

- 6.1 death or personal injury resulting from negligence; or
- 6.2 any damage or liability incurred by you as a result of our fraud or fraudulent misrepresentation.

## 7 USE OF YOUR PERSONAL INFORMATION

- 7.1 We will use the personal information you provide to us as set out in our privacy notice (available at <https://spink.com/privacy-policy>) and in particular to:
  - 7.1.1 process the bids you make on Lots (whether successful or otherwise) and other auction related services we provide;
  - 7.1.2 process your payment relating to a successful purchase of a Lot;
  - 7.1.3 arrange for delivery of any Lot you purchase, which will include passing your details to shipping providers and, on overseas deliveries, to customs where they make enquiries regarding the Lot;
  - 7.1.4 inform you about similar products or services that we provide, but you may stop receiving these at any time by contacting us.
- 7.2 In accordance with clause 4.2, we may pass your information to credit reference agencies in order to obtain credit checks from them, and they may keep a record of any search that they do.
- 7.3 In accordance with clause 5.11, where you default on making payment for a Lot in accordance with these terms and conditions we may disclose details of such default to other auctioneers and live bidding platforms.
- 7.4 We are also working closely with third parties (including, for example, other auctioneers and live bidding platforms) and may receive information about you from them.
- 7.5 Where you provide us with personal information about other individuals, you must ensure that your provision of that information is compliant with applicable data protection law.

## 8 COPYRIGHT

- 8.1 We shall have the right (on a non-exclusive basis) to photograph, video or otherwise produce an image of the Lot. All rights in such an image will belong to us, and we shall have the right to use it in whatever way we see fit.
- 8.2 The copyright in all images, illustrations and written material relating to a Lot is and shall remain at all times our property and we shall have the right to use it in whatever way we see fit. You shall not use or allow anyone else to use such images, illustrations or written material without our prior written consent.

## 9 VAT

You shall give us all relevant information about your VAT status and that of the Lot to ensure that the correct information is printed in the catalogues. Once printed, the information cannot be changed. If we incur any unforeseen cost or expense as a result of the information being incorrect, you will reimburse to us on demand the full amount incurred.

## 10 NOTICES

All notices given under these Terms and Conditions may be served personally, sent by 1st class post, or faxed to the address given to the sender by the other party. Any notice sent by post will be deemed to have been received on the second working day after posting or, if the addressee is overseas, on the fifth working day after posting. Any notice sent by fax or served personally will be deemed to be delivered on the first working day following despatch.

## 11 ADDITIONAL PROVISIONS

The following provisions of this clause 11 shall apply only if you are acting for the purposes of your business.

### 11.1 Limitation of Liability

Subject to clause 6, we shall not be liable, whether in tort (including for negligence) or breach of statutory duty, contract, misrepresentation or otherwise for any:

- 11.1.1 loss of profits, loss of business, depletion of goodwill and/or similar losses, loss of anticipated savings, loss of goods, loss of contract, loss of use, loss of corruption of data or information; or
- 11.1.2 any special, indirect, consequential or pure economic loss, costs, damages, charges or expenses.

### 11.2 Severability

If any part of these Terms and Condition is found by any court to be invalid, illegal or unenforceable, that part may be discounted and the rest of the conditions shall continue to be valid and enforceable to the fullest extent permitted by law.

### 11.3 Force majeure

We shall have no liability to you if we are prevented from, or delayed in performing, our obligations under these Terms and Conditions or from carrying on our business by acts, events, omissions or accidents beyond our reasonable control, including (without limitation) strikes, lock-outs or other industrial disputes (whether involving our workforce or the workforce of any other party), failure of a utility service or transport network, act of God, war, riot, civil commotion, malicious damage, compliance with any law or governmental order, rule, regulation or direction, accident, breakdown of plant or machinery, fire, flood, storm or default of suppliers or subcontractors.

## 11.4 Waiver

11.4.1 A waiver of any right under these Terms and Conditions is only effective if it is in writing and it applies only to the circumstances for which it is given. No failure or delay by a party in exercising any right or remedy under these Terms and Conditions or by law shall constitute a waiver of that (or any other) right or remedy, nor preclude or restrict its further exercise. No single or partial exercise of such right or remedy shall preclude or restrict the further exercise of that (or any other) right or remedy.

11.4.2 Unless specifically provided otherwise, rights arising under these Terms and Conditions are cumulative and do not exclude rights provided by law.

## 11.5 Law and Jurisdiction

11.5.1 These Terms and Conditions and any dispute or claim arising out of or in connection with them or their subject matter, shall be governed by, and construed in accordance with, the law of England and Wales.

11.5.2 The parties irrevocably agree that the courts of England and Wales shall have exclusive jurisdiction to settle any dispute or claim that arises out of, or in connection with, Terms and Conditions or their subject matter.

## Postal Charges

### Prices for all items including postage and packaging

Invoice Value	UK	EU	Rest of the World
Up to £1,500	£12	£20	£30
Up to £10,000	£20	£40	£60
Above £10,001	£30	£60	£90

The above fees are in GBP and would be converted into the sale currency if applicable.

Shipments of more than 2kg or volumetric measurement of more than 2kg have to be sent by courier. Certain countries may incur extra charge when courier services are required by our insurance policy. For lots sent by courier please contact [Auctionteam@spink.com](mailto:Auctionteam@spink.com) for calculation of any further relevant cost in addition to the above charges.

## Value Added Tax (VAT)

### Charging of (VAT) at Auction

The information shown on this page sets out the way in which Spink intends to account for VAT.

#### i. Margin Scheme and Auctioneers' Scheme

1. Where possible, we will offer Lots for sale under the Margin Scheme and Auctioneers' Scheme. Such Lots can be identified by the absence of any VAT symbol next to the Lot number in the catalogue. Such lots are subject to 20% VAT on the Buyers' Premium but are not subject to VAT on the Hammer Price.
2. Where Lots are sold using the Margin Scheme and Auctioneers' Scheme to UK VAT-registered businesses, the VAT on Buyers' Premium is not recoverable as input tax. Upon request on sale day, we will issue invoices that show VAT separately on both the Hammer Price and the Buyer's Premium. This will enable VAT-registered businesses to recover the VAT charged as input tax, subject to the normal rules for recovering input tax.

#### ii. Zero-Rated Lots

Limited Categories of goods, such as books, are Zero-rated (o) for VAT in the United Kingdom. Such Lots are offered under the Auctioneers' Scheme. In these circumstances no VAT will be added to the Buyer's premium.

#### iii. Daggedged Lots

Lots which are Daggedged (†) in the catalogue are subject to VAT at 20% on both the Hammer Price and the Buyer's Premium.

#### iv. Imported and Omega Lots

Lots which are marked (x) in the catalogue are subject to VAT at 5% on the Hammer price plus 20% on the Buyer's premium. Lots which bear the Omega symbol (Ω) are subject to VAT at 20% on the Hammer Price and on the Buyer's Premium. This VAT is payable on items imported from outside the UK. In these cases we have used a temporary importation procedure, which in effect means that the point of importation is deferred until the Lot has been sold. At this point the Buyer is treated as the importer and is liable to pay the import VAT due. We will collect the VAT from you and pay it to HM Customs and Excise on your behalf.

#### v. Investment Gold Lots

Lots marked (g) in the catalogue are exempt from VAT on the Hammer Price and are subject to VAT at 20% on the Buyer's Premium. A refund of VAT charged on the Buyer's Premium can also be made on receipt of proof of business as a collectibles dealer outside of the UK.

# SPINK

WHERE HISTORY IS VALUED

## SALE CALENDAR 2021

### STAMPS

13 April	The 'Blanic' Collection of Nyasaland and Rhodesia	London	21021
14-15 April	The Philatelic Collectors' Series Sale	London	21016
20 April-6 May	Stamps of the World e-Auction	London	21111
5 May	Important Stamps of the World	London	21019
2 June	Stamps and Covers of Great Britain	London	21022
3 June	Rhodesia Double Head Issue: The Cottonwood Collection	London	21020

### COINS

11-29 March	Spink Numismatic e-Circular 7 Part III: The Eccles Collection of English Coins	London	21121
15 March-3 April	The Numismatic e-Auction	Hong Kong	CSS63
18 March	The Tony Abramson Collection of Dark Age Coinage-Part I	London	21000
18 March	The Tony Abramson Collection of Dark Age Coinage-Part II: Northumbria	London	21050
31 March-30 April	The Piccadilly List	London	21005
7 May	The Numismatic Collectors' Series sale	Hong Kong	CSS62
8-22 June	Spink Numismatic e-Circular 9	London	21124
23 June	Coins and Commemorative Medals Summer Auction	London	21006
7-28 September	Spink Numismatic e-Circular 10: Indian & Islamic Coins	London	21125
29 September	Coins and Commemorative Medals Autumn Auction	London	21007

### BANKNOTES

15 March-3 April	The Numismatic e-Auction	Hong Kong	CSS63
6-20 April	World Banknotes e-Auction	London	21108
21 April	Drs Joanne and Edward Dauer Collection of English Banknotes	London	21055
21/22 April	World Banknotes	London	21008
7 May	The Numismatic Collectors' Series sale	Hong Kong	CSS62
5 May-8 June	British Banknotes e-Auction	London	21109

### MEDALS

10-24 March	Orders, Decorations and Medals e-Auction No. 2 – including Masonic Jewels	London	21101
7/8 April	Orders, Decorations and Medals	London	21001
7 May	The Numismatic Collectors' Series sale	Hong Kong	CSS62

### BONDS & SHARES

9-23 March	The Kirk Collection of World Bonds & Share Certificates e-Auction	London	21140
7-27 April	Bonds and Share Certificates of the World e-Auction	London	21142
7 May	The Numismatic Collectors' Series sale	Hong Kong	CSS62

### HISTORICAL DOCUMENTS

21-28 January	Autographs & Documents e-Auction featuring the Mike Roth Aviation Collection Part II	New York	369
---------------	--	----------	-----

### LIFESTYLE COLLECTABLES

23-30 August	Fine Whisky & Rum e-Auction	Hong Kong	SFW37
3-14 December	Estates & Collections e-Auction	New York	365

The above sale dates are subject to change

Spink offers the following services:

- VALUATIONS FOR INSURANCE AND PROBATE FOR INDIVIDUAL ITEMS OR WHOLE COLLECTIONS –
- SALES ON A COMMISSION BASIS EITHER OF INDIVIDUAL PIECES OR WHOLE COLLECTIONS –

WWW.SPINK.COM









BY APPOINTMENT TO  
HER MAJESTY THE QUEEN  
MICHAEL SPINK & SONS, LTD., LONDON



BY APPOINTMENT TO  
HIS MAJESTY THE KING  
MICHAEL SPINK & SONS, LTD., LONDON

# SPINK

*WHERE HISTORY IS VALUED*

FOUNDED  
1666

STAMPS COINS BANKNOTES MEDALS BONDS & SHARES AUTOGRAPHS BOOKS  
WINE & SPIRITS HANDBAGS COLLECTIONS ADVISORY SERVICES SPECIAL COMMISSIONS

69 Southampton Row, Bloomsbury, London WC1B 4ET  
[www.spink.com](http://www.spink.com)