
RHODESIA 1910-13 DOUBLE HEAD ISSUE
THE COTTONWOOD COLLECTION
Robert M. Gibbs Trustee



SPINK

WHERE HISTORY IS VALUED

3 JUNE 2021
LONDON



RHODESIA 1910-13 DOUBLE HEAD ISSUE THE COTTONWOOD COLLECTION

Robert M. Gibbs Trustee

Sale Venue:

The Royal Philatelic Society London

15 Abchurch Lane

2nd Floor

London

EC4N 7BW

tel +44 (0)20 7563 4104 fax +44 (0)20 7563 4037

Vat No: GB 791627108



Sale Details | Thursday 3 June 2021 at 10.30 a.m.

When sending commission bids or making enquiries,
this sale should be referred to as **TATUM- 21020**

Viewing of Lots | At RPSL (in line with government guidelines)
Wednesday 2 June 2021 at 10.00 a.m. – 5.00 p.m.

| Private viewing by appointment only

Live platform | **SPINK**  **LIVE** and **StampAuction**
NETWORK

Your Specialists for this Sale



Nick Startup
nstartup@spink.com
+44 (0)20 7563 4073



David Parsons
dparsons@spink.com

Bids

Axel Kendrick
auctionteam@spink.com
+44 (0)20 7563 4108/4103
fax +44 (0)20 7563 4037

Technical Issues

support@spink.com
+44 (0)20 7563 4089

Payment Enquiries

Veronica Morris
creditcontrol@spink.com
+44 (0)20 7563 4018

VAT Enquiries

John Winchcombe
jwinchcombe@spink.com
+44 (0)20 7563 4101

The Spink Environment Commitment: Paper from Sustainable Forests and Clean Ink

Spink has a long history of preserving not only collectables but our planet, too. We are proud to ensure that our policy of sustainability and conservation keeps up with Spink's growth, helping improve the environment for new generations of collectors.

We insist that our printers source all paper used in the production of Spink catalogues from FSC and/or PEFC suppliers and use non-hazardous inks. We also ask they hold the environmental standard ISO 14001.

Spink recycle all ecological material used on our premises and we encourage you to recycle your catalogue once you have finished with it.

www.spink.com

@SpinkandSon

#Spink_Auctions

Spink_auctions

Spinkauctions

Spink_auctions



Group Chairman and CEO

Olivier D. Stocker

Director

Tim Hirsch FRPSL

Chief Financial Officer

Alison Bennet

Head of EMEA

Mira Adusei-Poku
mpoku@spink.com

Specialists

Stamps

Tim Hirsch FRPSL
Iain Murphy
David Parsons
Nick Startup
Neill Granger FRPSL
Dominic Savastano
Josh Barber
Thomas Fell
Ian Shapiro (Consultant)
Guido Craveri (Consultant)
Christopher Green
George Yue (Consultant)
Alan Ho

Historical Documents

Thomas Fell
Neill Granger FRPSL
Ian Shapiro (Consultant)

Books

Emma Howard
Fabian Rigby

Client & Auction Management

Geoff Anandappa (Consultant)
Nik von Uexkull
Jade Le Petit
Axel Kendrick
Fred Lawton
John Winchcombe
Annie Sohail
Samantha Lanevi
Newton Tsang
Katrina Chan

PR & Marketing

Rita Ariete
Alzbeta Lanova
Nerissa Douglas

Chief Customer Officer

Rita Ariete

Head of Asia-Pacific

Sue Pui
spui@spink.com

Coins

Kelvin Cheung
Henrik Berndt
Richard Bishop
Tim Robson
Gregory Edmund
Barbara Mears
Kin Choi Cheung
Paul Pei Po Chow
Joseph Lam
Greg Cole (Consultant)

Orders, Decorations & Medals

Marcus Budgen
Harry Blackett-Ord
Greg Cole (Consultant)

Special Commissions

Ian Copson
Robert Wilde-Evans

Finance

Alison Bennet
Sue Pui
Marco Fiori
Mina Bhagat
Dennis Murri
Veronica Morris
Nicholas Waring

Representatives For Australia

Michael R. Downey - mdowney@spink.com

Representative For Canada

Timothy J. Stewart - tstewart@spink.com

Representative For Japan

日本での弊社オークションへの出品・参加に関してのお問い合わせ

Alan Ho - japan@spink.com

Representative For South Africa

Andrew Kennedy - akennedy@spink.com

Chief Operating Officer

Mira Adusei-Poku

Head of Consignments

Charles J Blane
cblane@spink.com

Banknotes

Kelvin Cheung
Barnaby Faull
Elaine Fung
Arnas Savickas
Paul Pei Po Chow
Greg Cole (Consultant)

Bonds & Shares

Kelvin Cheung
Mike Veissid (Consultant)
Greg Cole (Consultant)

Wine & Spirits

George Koutsakis

IT & Administration

Michael Lewis
Iveta Gaalova
Liz Cones
Slawomir Kolsut
Newton Tsang
Jacqueline Wong

Spink UK

69 Southampton Row
Bloomsbury
London
WC1B 4ET
Email:
conciierge@spink.com
Tel: +44 (0)20 7563 4000
Fax: +44 (0)20 7563 4066

Spink USA

145 W. 57th St.
18th Floor
New York, NY
10019
Email:
usa@spink.com
Tel: +1 646 941 8664
Fax: +1 646 941 8686

Spink China

4/F and 5/F
Hua Fu Commercial
Building
111 Queen's Road West
Sheung Wan
Hong Kong
Email:
china@spink.com
Tel: +852 3952 3000
Fax: +852 3952 3038

Spink Asia

Registered at:
50 Raffles Place
#17-01 Singapore Land
Tower
Singapore 048623
Email:
singapore@spink.com

Spink Switzerland

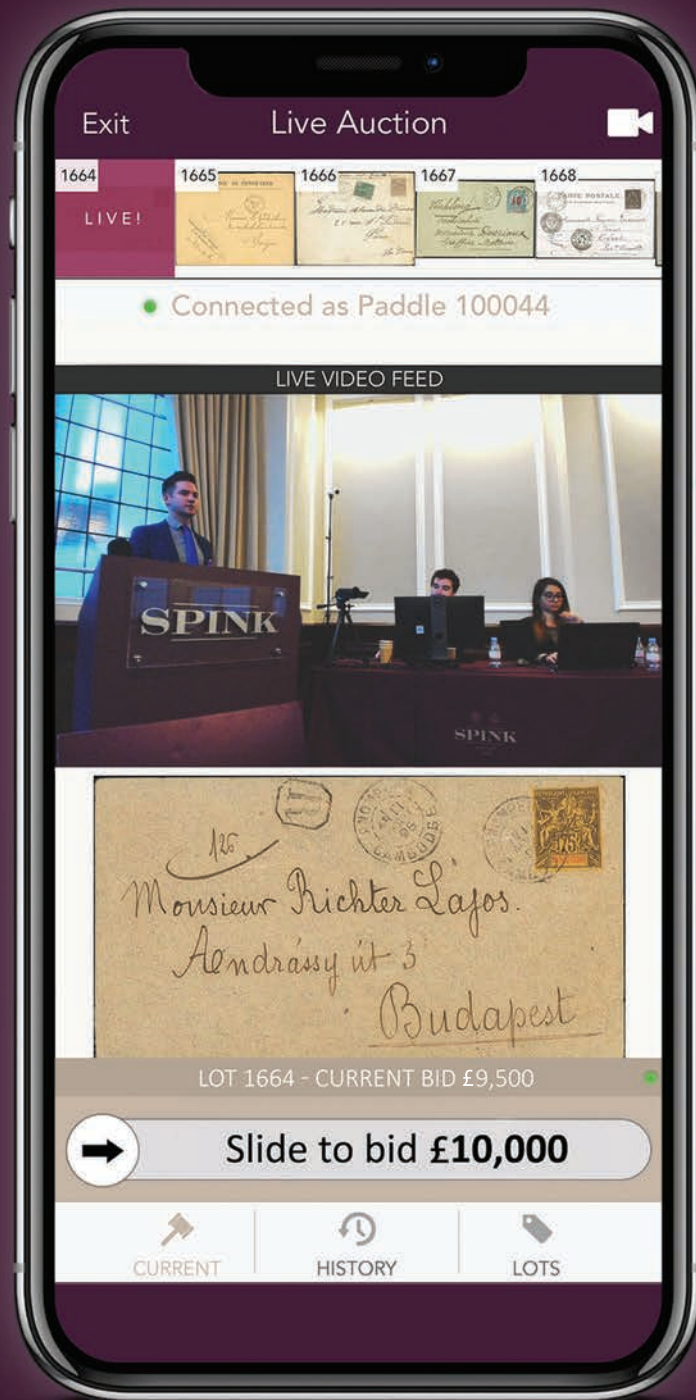
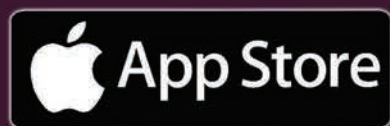
Via Livio 8
6830 Chiasso
Switzerland
Email:
switzerland@spink.com
Tel: +41 91 911 62 00
Fax: +41 91 922 20 52

SPINK LIVE

Live auction
experience
at your finger tips

**DOWNLOAD
YOUR APP
TODAY**

Available for
iOS and Android



LONDON | NEW YORK | HONG KONG | SINGAPORE | SWITZERLAND



#SPINK_AUCTIONS WWW.SPINK.COM

Extensions

Prospective buyers who wish to obtain an expert opinion on any lot (other than a mixed lot or lot containing undescribed stamps) are requested to notify Spink in writing not less than forty-eight hours before the time fixed for the commencement of the first session of the sale. If accepted by Spink, such request shall have the same effect as notice of an intention to question the authenticity of the lot for the purposes of Condition 3.4 of our Terms and Conditions for Buyers.

Notice of a request for an expert opinion must give the reason why such is required and specify the identity of the expert which will be subject to the agreement of Spink. All lots for which Certificates of Authenticity are desired must be submitted by Spink to the Expert Committee for choice.

Buyers are reminded that any lot(s) purchased “on extension” are subject to payment in accordance with our normal Terms & Conditions of Business. Settlement of any lots on extension should be made at the time of invoice payment. Overdue accounts are subject to interest charges.

Extensions requested on account of condition will not be accepted for expert opinions. Any Lot described as having faults or defects may not be returned should a certificate cite other faults or defects not included in the catalogue description.

Should Spink accept a request for an extension under the foregoing provisions of this paragraph, the fact may be stated by the Auctioneer from the rostrum prior to the sale of the lot.

It should be noted that any stamp accompanied by a Certificate of Authenticity is sold on the basis of that Certificate only and not on the basis of any other. No request for an extension will be accepted on such a stamp and the return of such a stamp will not be accepted.

Notes Concerning Descriptions

GUM: Original gum should be expected on unused stamps where appropriate, unless stated otherwise in the description:

mint	unused with original gum showing slight disturbance caused by previous hinge, which may be present in part or entirely removed
part original gum	unused with original gum significantly disturbed or heavily hinged
unmounted mint	original gum as issued
unused	without gum

COVERS: Should be expected to have minor nicks and tears usually from opening. Folded letters or covers normally have one or two file folds. These are not described unless of an exceptional nature and are not grounds for return.

entire letter	complete as sent with comments still attached to the outer address portion
entire	the outer portion of a folded letter but without contents
cover	an envelope

Symbols and Abbreviations

⊗	unmounted mint	d.s.	datestamp
★	unused	h.s.	handstamp
○	used	Ⓐ	air mail
⊞	block of four	Ⓢ	specimen
⊞	block larger than four	Ⓒ	cancelled
⊞	used on cover, entire letter, etc.	Ⓔ	essay
△	on piece	Ⓗ	proof
var.	variety, varieties	F	forgery
cat.	catalogue, catalogue value	R	reprint
c.d.s.	circular datestamp		

References

Catalogue values and numbers are those taken from the latest available edition.

The use of Gibbons Specialised catalogues in Great Britain sales is clearly indicated. Where other catalogues are used they are mentioned by name.

Buyers are reminded that payment must be made within seven days from the date of sale (condition 5.4.1), and interest will be added for overdue accounts (condition 5.10.1.1).

Please note charges for credit card payments (condition 5.4.3(iii)).

Buyers are reminded that if they default on a successful bid that details relating to such default may be shared with other auction houses and live bidding platforms (condition 5.11).

THE RHODESIAN STUDY CIRCLE

A philatelic society for collectors of British South Africa, British Central Africa, Rhodesia, Nyasaland, Southern Rhodesia, Northern Rhodesia, Malawi, Zambia and Zimbabwe



Established in 1948, the Rhodesian Study Circle brings together nearly 400 philatelists and postal historians from around the world, who enjoy at least four issues each year of the award-winning Journal of the Rhodesian Study Circle, research Memoirs written by members, and regional meetings in North America, England, Scotland, South Africa, Zimbabwe, Germany, Australia and New Zealand. Since 2020, many have participated in highly successful virtual meetings. An annual conference is held every year and members enjoy the opportunity to participate in competitions and postal auctions.



Visit the RSC website for more information

www.rhodesianstudycircle.org.uk

INTRODUCTION

My romance with the Double Heads has been a long and fascinating journey. I would date it from about the age of 15 when I was entranced by the superb bi-coloured issues of the Empire like the Falkland Islands and St. Helena Centenary sets. Two years later during my first year at University I sold my first collection; I needed 40 Pounds for the deposit on my first new motorcycle and my Father suggested that I sell my stamp collection to our dear family friend, Lazar Blum who, upon examination, pronounced that the collection was worth about 40 Pounds to him! At that time I was a 17 year old sports-balmy twit lacking in subtlety and I think it took me a couple of decades to work out what had just transpired!

Thereafter my philatelic adventures were postponed until about 1962 by which time I had completed my University Degrees and also qualified as a Chartered Accountant. I then left the Auditing Profession and moved into the more highly paid commercial field of housing development and found that, as a bachelor, I had significant disposable income which meant that I could dive back into philately. I had never lost touch with "Uncle Lazar" visiting him frequently all through these wilderness years and when I told him that this time it would be just the Double Heads he put me in touch with a delightful gentleman named Lorenzo Chiappini who had a very fine collection of Double Heads and was a close relative of my best friend Michael Chiappini. I visited Mr. Chiappini regularly for some months while, unknown to me, he and Lazar were conspiring together on a plan which would enable me to acquire the Double Head Collection. Eventually Lazar was able to locate some very rare proof and essay material of the Niger Coast / Oil Rivers which was Mr. Chiappini's favourite field of endeavour and he said to me that Mr. Chiappini would accept these as a trade for his Double Heads and the deal was speedily enacted! (I must point out that in 1963 the Double heads were not particularly valuable or highly catalogued.) I subsequently discovered among the 1/- values a fine mint example of 181a which was very possibly the most exciting and important philatelic discovery I have ever made!

In 1969 I met and, just as quickly as I could, married my lovely Gilly. We were planning on emigrating to California as I already had the necessary visa in place having visited the USA in the late 50s. I communicated with John Farthing of Stanley Gibbons, told him of our plans and said I wanted to sell the collection; he said he would be in Cape Town in the next 60 days and very much wanted to buy it. This was done in relatively short order and he paid me what I considered to be a very generous price.

We arrived in San Francisco in August 1970 and managed to get ourselves fairly well established by about 1974 when I started to dabble in stamps; by 1976 I was seriously involved in the hobby and never really looked back. My adventures since that time have been fairly well documented.

Finally, this last Collection was conceived as a celebration of its colour, beauty and all of its eclectic glory such as fiscal use and documents, postmarks, covers, postcards and used stamps as well as the stamps themselves which include many examples of undocumented and unlisted items which are yet to be acknowledged.

Sadly, the somewhat premature sale of this collection was to a large extent prompted by events in the middle of last year when Gilly and I were both diagnosed with very serious health problems which have naturally had a marked effect on our lives. On a more positive note I still have a great deal to do on my vast Penny Collection and I hope that I will have the time to document the lives of Plates A and B in great detail for the benefit of all the students of this fascinating stamp.



Note: All lots are subject to the Terms and Conditions for Buyers printed at the back of this catalogue and published on www.spink.com.

The estimated selling price of each lot is printed below the lot description and does not include the Buyer's Premium.

Bidders should bear in mind that estimates are prepared well in advance of the sale and are not definitive. They are subject to revision.

All buyers must read the notes concerning requests for Extensions printed on page 4 of this catalogue.

The Terms of that notice must be complied with fully under all circumstances.

Please note that you can bid on Spink Live in real time through www.spink.com and via a SpinkLive app available for download from the App Store. Bidding via Spink Live is free of charge.

THURSDAY 3 JUNE 2021

Commencing at 10.30 a.m.

PRINTER'S SAMPLE DIE PROOF



1

x1 ©

10d. in black and rose-carmine on thin card, die-stamped "WATERLOW & SONS LTD/SPECIMEN" (WS4) in blue and affixed to piece of sample card numbered "ST. 746"; minor peripheral toning, otherwise fine and unique. B.P.A. Certificate (2019). Photo

£3,500-4,000



The Royal Philatelic Society London

We are pleased to receive proposals for membership of the Society which is through election.

If you are interested in membership, please contact us at secretary@rpsl.org.uk

If you have no proposer or seconder, please contact us for further information.

Tel: 00 44 (0)20 7486 1044 | www.rpsl.org.uk

The world's oldest and most prestigious philatelic society, established 1869, with over 2,000 members in more than 70 countries.

Extensive premises in London's West End house the Society's superlative library, plus Museum and Archive, and provide first-class meeting facilities.

The Society's Online Catalogue provides access to over three-quarters of a million philatelic indexes to members world-wide.

A fascinating programme of displays and meetings throughout the year, supplemented by regional meetings and gatherings at major international events.

The Society publishes ten times a year its own journal, *The London Philatelist*, containing articles of outstanding philatelic research, in addition to publishing major philatelic works.

We are honoured to have Her Majesty Queen Elizabeth II as our Royal Patron

ISSUED STAMPS

Perforated 14

Halfpenny

Ranges

- x2 ★ A mint range comprising Looker Plate I 1 (6), 2 (7, two in a tired and worn state), 3 (6), Plate II 5 (3), 6 (5, one [80] worn plate), 7 (7), and Plate III 8 and 9 (5), part to large part gum. A fine lot £200-250

PROVENANCE:
Lord Vestey, March 2015
- x3 ★ A mint range comprising Looker Plate I 1 (11, one an upper left corner example, three in a worn and tired state, one [1] with left value tablet recut and [53] with dot below left side of bell below “D”), 2 (4, one with smooth left-hand value tablet) and 3 (3), Plate II 5 (7 with [5], [82], [91] and one with recut top line at right), 6 (3, including an imprint pair), Plate III 7 (3, [6], [61] and [79]), 8 [39] and 9 (4 with [6], [53] and [96]); generally fine to very fine £250-300

PROVENANCE:
Paul Sundback for some
- x4 ○ A used range comprising Looker Plate I 1 (5, one [61] used from Salisbury in August 1911 and one used from Kawambwa, N.R. in 1917), Plate II 5 [76] with large heart-shaped dot on the S.E. corner of “D” of “RHODESIA”, Plate III 7, 8 [17] with King’s Head gash and [97] with badly cut “H” in “RHODESIA”; generally fine £100-150



5



6

Plate I, RJL 3, Olive-green group

- x5 ◻ A block of four, each horizontal pair sharing large part “FUNDU” double-ring datestamp for 4 February 1913; a couple of light tones on reverse. A scarce and important postmark and of very fine appearance. Memoir 34, F33, page 234. Photo £150-200

Plate II, RJL 4, Pale green group

- x6 ★ ◻ A block of four, [28-39], [28] with “double dot” variety, exceptionally lightly mounted with the lower pair remaining unmounted; rare and exceptionally fine. Photo £400-500

PROVENANCE:
Dr. Alan Knott-Craig, July 2015



7



9

Plate II, RJL 5, Dull blue-green group

x7 ★田

A block of four with the upper left-hand stamp badly worn at upper right above King's head, fresh mint with the upper pair apparently unmounted. Very fine. Photo

£100-120

PROVENANCE:
Robert M. Gibbs, October 1987
Lord Vestey, March 2015



8

x8 ★

A marginal pair, [39-40], from the right of the sheet, variety **imperforate**, lovely fresh colour and very lightly mounted with the stamps having nearly full original gum, two hinge remainders in margin. Exceptionally fine with none of the creasing that is normally associated with this rare variety. S.G. 120a, £15,000. Photo

£7,000-8,000

PROVENANCE:
The Amir of Bahawalpur, February 1969
Besançon, September 2020

Plate II, RJL 6, Apple-green, the true shade

x9 ★田

A block of four, [81-92], [82] with "bomb" flaw, fresh with large part original gum, the lower pair apparently unmounted. A fine and very rare multiple. Brandon Certificate (1993). Photo

£800-1,000

PROVENANCE:
Dick Pollitt
Lord Vestey, March 2015

Plate III, RJL 7, Bronze-green group



10

x10 ★ ㊦

A marginal block of fifteen, [82-96], [82] with a late state of the “bomb” flaw and top line recut at right, fresh mint with only the four corner stamps showing any signs of mounting, the others unmounted mint. An exceptional multiple. Photo

£800-1,000

PROVENANCE:

Robert M. Gibbs, private sale
Lord Vestey, March 2015

Plate III, RJL 8, Emerald-green group



11

x11 ㊦

A marginal block of four from the left of the sheet, [21-32], [31] with very heavy recut at right; fresh unmounted mint. Very fine and rare. Photo

£700-800

Plate III, RJL 9, Deep dull green group



12

x12 ⊕ B

An upper left corner block of sixteen, [1-34], fresh unmounted mint; a superb pristine multiple. Photo

£1,000-1,200

PROVENANCE:

Gerald Simpson, December 1982, sheet of one hundred

Robert M. Gibbs, October 1987, sheet of one hundred

Lord Vestey, March 2015

Plate IV, RJL 10, (Slightly bluish) dull green

x13 ○

A used group comprising [25], [33], [40], [51], [59] and [87] (top two lines recut at right), variously cancelled, a couple with small imperfections, otherwise generally fine and a scarce group

£150-200

Plate IV, RJL 11, Dull bluish green



14



15



16

- x14 ★ [47] with light vertical line through left-hand value tablet and faint vertical line through right-hand value tablet, large part original gum with a single hinge remainder. Fine and rare. Photo £180-200
- x15 ★ [70], mark in “D” of right-hand value tablet, part original gum; diagonal crease at upper left, otherwise fine and rare. Photo £100-120
- x16 ★ [87], double recut at upper right, fine lightly mounted mint. Rare. Photo £180-200



17



18

- x17 ★ [92], marks on left-hand value and below, fresh mint with a single hinge remainder. Fine and rare. Photo £180-200
 PROVENANCE:
 Lord Vestey, March 2015
- x18 ★ [96], marks at foot of south east arm of right curl of “RHODESIA” panel and line through “1” and “2” of right-hand value tablet, fine and lightly mounted mint. Photo £180-200

Plate IV, RJL 12, Deep emerald-green



19



20



21

- x19 ⊕ [19], unmounted mint; couple of gum bends, otherwise very fine and rare. Photo £180-200
- x20 ★ [68], dot in left-hand value tablet, large part original gum; a couple of shortish perfs. at left, otherwise fine and rare. Photo £100-120
- x21 ★ [99], part original gum; one small tone mark on gum, otherwise sound. Photo £70-80

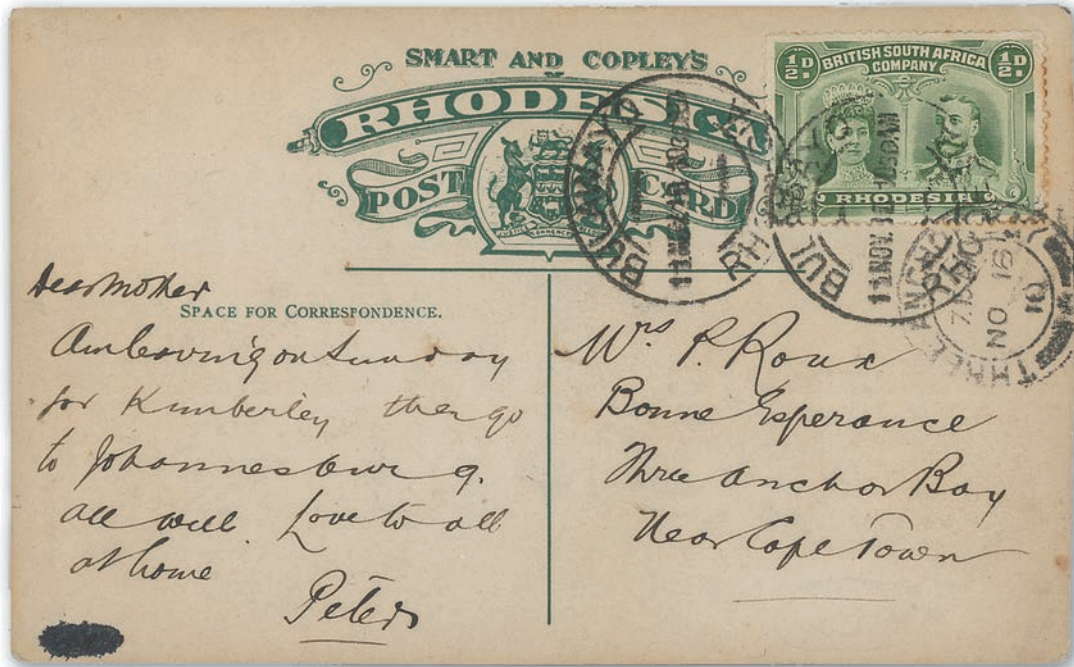
Plate IV, RJL 11, Dull bluish green, RJL 12, Deep emerald green

x22 ○

A used group comprising 11 [82] and [87]) and 12 [51], [65], [86-87] and [88]; the pair with some colour suffusion though generally fine and a scarce group

£100-120

First Day Cover



23

x23 ☒

1910 (11 Nov.) Smart and Copleys “*Victoria Falls from Livingstone Island*” picture postcard from Bulawayo to Three Anchor Bay, Cape Town, bearing ½d. green twice neatly cancelled by double-ring datestamp with date clearly visible, and additionally tied by arrival datestamp (16.11). Photo

An exceptionally rare first day usage for this issue with only two cards and one cover recorded. The cover bearing a ½d. and 1d. pair is offered as lot 50

£1,200-1,400

PROVENANCE:
Gunnar Strehmel, June 1994
Alan Uria, July 2012

The Paul Graetz Expedition



24

x24 ☒

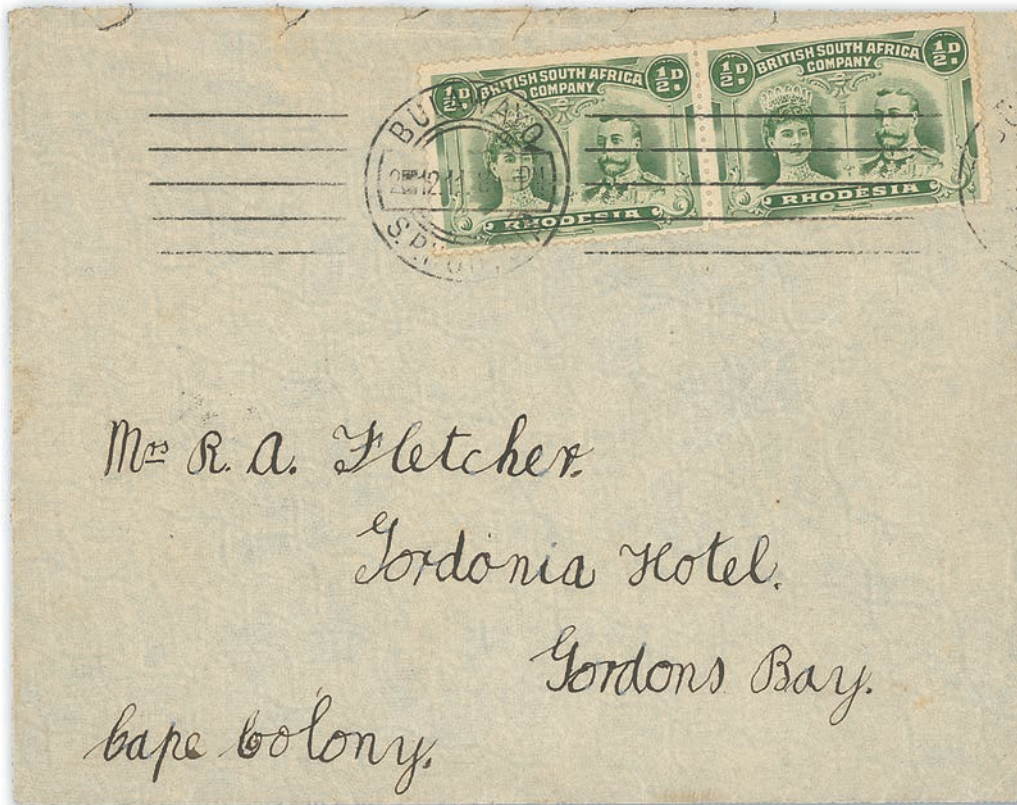
1911 (2 Dec.) envelope (290x118mm.) registered from Fort Roseberry to a photographer/projector maker in Berlin, bearing ½d. olive-green and 1d. red in combination with 1897 4d. ultramarine and claret and 1898 6d. reddish purple each cancelled with a very late use of the “859” BONC and with the ½d. additionally tied by a fine strike of the single-ring “FORT ROSEBERRY/N.E. RHODESIA” datestamp with code “O”, showing manuscript “R No 92” with the “R” subsequently over-stamped with oval-framed “R”, the reverse of the envelope twice sealed with two “FORT ROSEBERRY/N.E. RHODESIA” red wax seals with large and small parts remaining, London Registered hooded datestamp (6.1.12) and Berlin (8.1) datestamps; central vertical crease and a few other trivial imperfections, nevertheless a remarkable four colour franking and quite rightly considered to be the greatest of all ½d. Double Head covers. Photo

£1,800-2,000

Note: Paul Graetz was posted to German East Africa in 1901. He was to undertake three expeditions to cross Africa. In 1907 a newspaper announced that he planned to cross Africa in an automobile eventually arriving in Swakopmund in May 1909, 630 days after setting off. In 1911 he again set off, this time initially on water with the expedition boat “Sarotti”, later on the boat being carried on land. During this journey a wounded buffalo attacked Graetz and his photographer, killing the photographer and injuring Graetz who sustained a broken jaw amongst other injuries. Graetz was still recovering from his injuries when he mailed this envelope to Berlin. The expedition ended just before reaching the Congo River. He subsequently resumed this journey in 1912, via the Congo River

With thanks to Derek Lambert. See the Rhodesia Study Circle Issue 284, March 2021

Later Covers



25

x25 ☒

1912 (12 Nov.) envelope from Bulawayo to the Gordonia Hotel, Gordons Bay, bearing ½d. bronze-green horizontal pair sharing a fine strike of the Krag machine datestamp showing blank after day, arrival datestamp (6.12) on reverse; minor tears at top through opening though very rare with only two examples recorded. Memoir 34, B111. Photo

£350-400

PROVENANCE:
Chris Cordes, private sale



The Royal Philatelic Society London

We are pleased to receive proposals for membership of the Society which is through election.

If you are interested in membership, please contact us at secretary@rpsl.org.uk

If you have no proposer or seconder, please contact us for further information.

Tel: 00 44 (0)20 7486 1044 | www.rpsl.org.uk

The world's oldest and most prestigious philatelic society, established 1869, with over 2,000 members in more than 70 countries.

Extensive premises in London's West End house the Society's superlative library, plus Museum and Archive, and provide first-class meeting facilities.

The Society's Online Catalogue provides access to over three-quarters of a million philatelic indexes to members world-wide.

A fascinating programme of displays and meetings throughout the year, supplemented by regional meetings and gatherings at major international events.

The Society publishes ten times a year its own journal, *The London Philatelist*, containing articles of outstanding philatelic research, in addition to publishing major philatelic works.

We are honoured to have Her Majesty Queen Elizabeth II as our Royal Patron

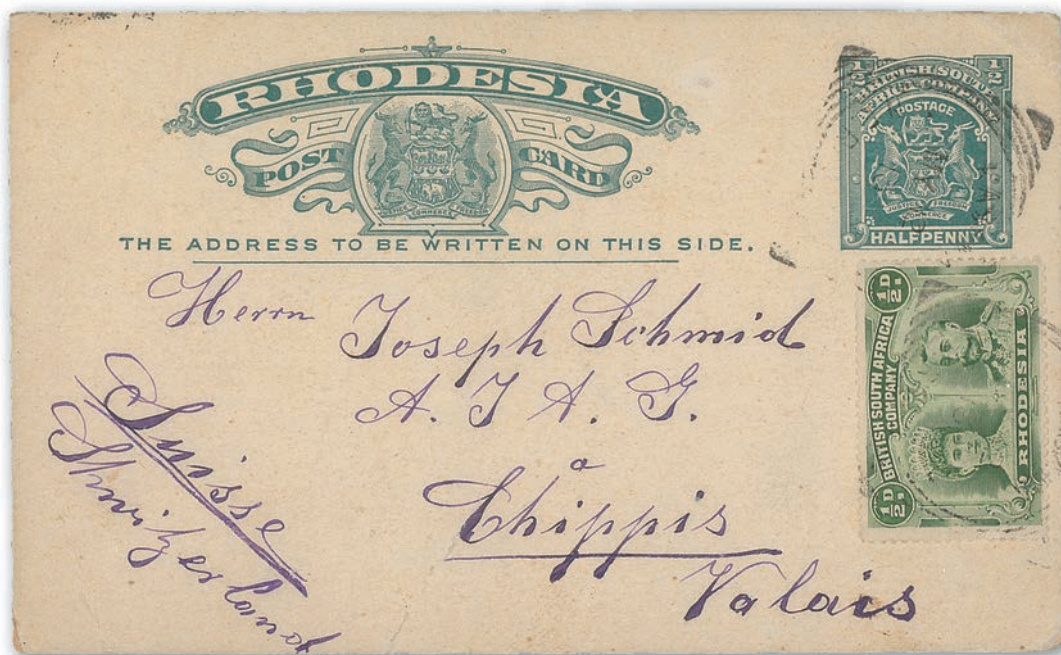


26

x26 ☒

1912 (30 Nov.) Percy M. Clark "The Bridge from Victoria Falls Hotel" picture postcard from Victoria Falls to Bruxelles, bearing ½d. olive-green horizontal pair twice cancelled with 26mm. skeleton datestamp and with the left-hand stamp additionally tied by arrival datestamp (21.12) with local delivery number handstamp alongside. Fine and very rare. Memoir 34, V91, page 202. Photo

£700-800



27

x27 ☒

1913 (11 May) ½d. green card, uprated with ½d. green, from Chilabula, Northern Rhodesia to Chippis, Switzerland, lightly cancelled with Kasama squared-circle datestamp and showing Broken Hill transit datestamp (2.6) on reverse. Memoir 34, K20, page 243. Photo

£180-200



28

x28 ☒

1913 (21 Aug.) postcard from Mme. Renee Burnier who lived at Lukona to Madame Fischer de Schulttes at Montana, Switzerland, bearing ½d. olive-green horizontal pair each neatly cancelled by Mongu-Lealui double-ring datestamp, Livingstone (5.9) and Montana-Vermala t.p.o. (1.10) datestamps alongside; a fine item from the Barotseland Missionaries. Memoir 34, M11. Photo

£180-200



29

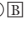
x29 ☒


1914 (14 July) picture postcard "Main Fall, Victoria Falls" from Victoria Falls to London, bearing Plate IV RPL 12 deep emerald-green horizontal pair, [87-88], [87] with 2nd. line recut, both stamps cancelled by double-ring datestamps. Rare late use of Looker RLJ 12 pair on a postcard. Photo

£200-250

One Penny

Plate A Sheet

- x30 ○ Bright carmine complete sheet of one hundred with sheet number "175", each block of four neatly cancelled-to-order with Gwelo 24 December 1912 double-ring datestamp, fresh colour; minor soiling in top margin though in a remarkable state of preservation for an item of this nature £1,400-1,600
- PROVENANCE:
Oswald Marsh, private sale

- x31 ★ Bright carmine marginal block of four from the right of the sheet, [29-40], large part nearly full original thick brown crackly gum with the lower pair remaining unmounted; very fine. S.G. 123 £120-150





32



33



34

- x32 ★ Carmine-lake family block of four, [72-83], the upper pair showing "OD" flaws, large part original gum, wonderful colour and appearance; very fine and most attractive. S.G. 124. Photo £180-200
- x33 ★ Carmine-lake family marginal block of four, [85-96] with imprint, [95] *King's weak eye*, lightly mounted mint with the lower pair (light bend) remaining unmounted. S.G. 124. Photo £250-300
- PROVENANCE:
Bryant Rose, March 1995
Lord Vestey, March 2015


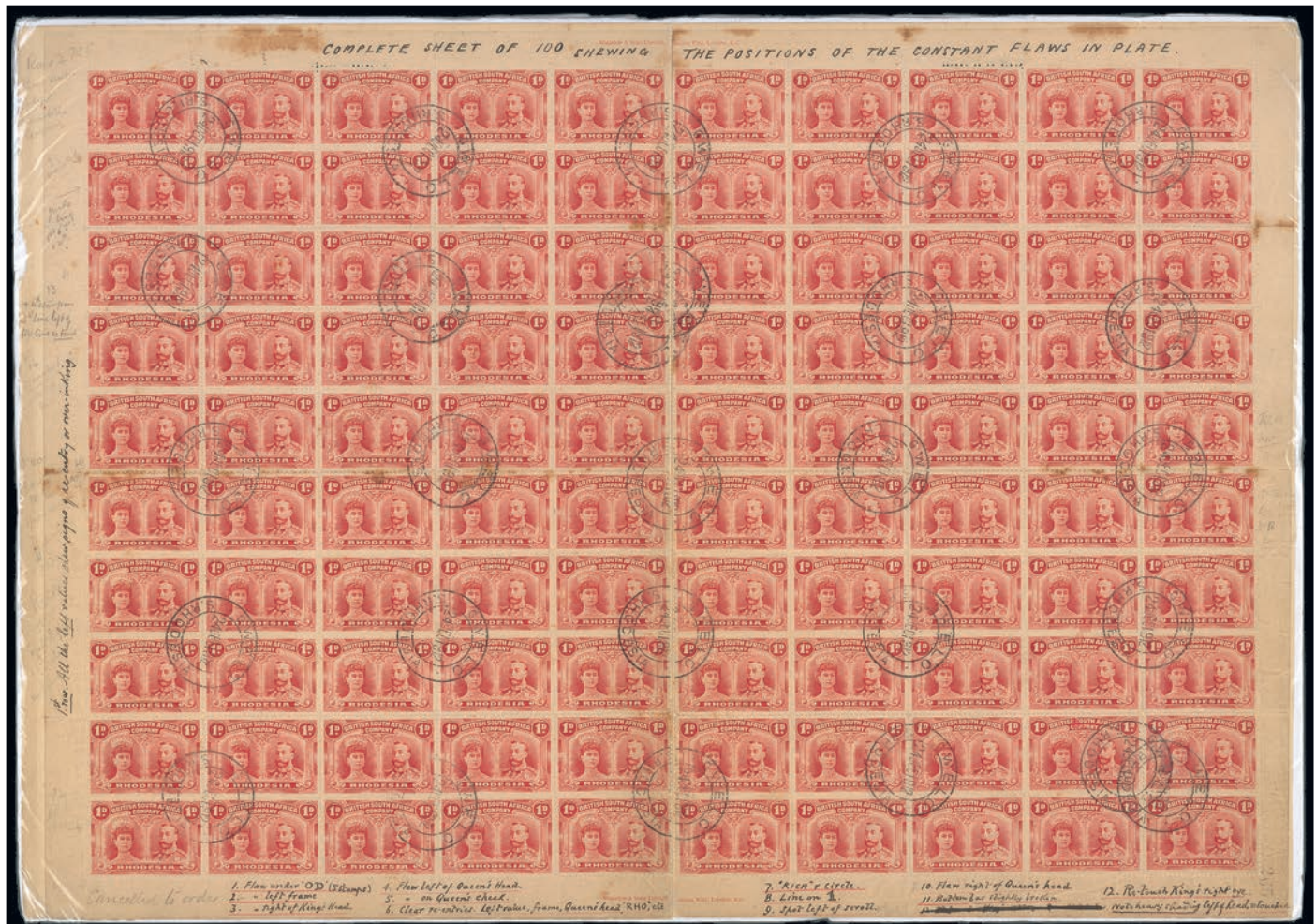
- x34 ★ Carmine-lake family block of four, [81-92], [91] indicating very late state of Plate A, virtually full original gum with the lower row remaining unmounted; two light diagonal gum bends, otherwise fine. S.G. 124. Photo £120-150

Plate B Sheet



35

x35 ○B

Carmine-lake complete sheet of one hundred with sheet number “265”, [87B] is the extremely rare “first repair”, the state that followed the “original flaw”, each block of four cancelled-to-order with Gwelo 24 December 1912 double-ring datestamp, pen and pencil notes by H.C. Dann on all sides of the margin with those at foot being related to flaws and retouches; divided vertically at centre and elsewhere; some faults in places though a hugely important and unique multiple. Photo

£3,500-4,000

Note: The First Repair appears to be considerably rarer than the Original Flaw itself, no mint example having been found and only a handful of used singles having been recorded

PROVENANCE:

H.C. Dann, private sale
 Alan Deal, private sale
 Robert M. Gibbs, October 1987
 Charles Temple, private sale



36

x36 ★ ㊦

Bright carmine lower left corner block of six (3x2), [80-92], fresh bright colour and very lightly mounted mint with most remaining unmounted; fine and most attractive. S.G. 123. Photo

£200-250



37

x37 ★ ㊦

Very deep carmine-lake block of four, [1-12], in a very worn state of the plate and in an extraordinary shade, large part original gum; the right-hand vertical pair with a crease, otherwise sound and very scarce. Photo

£250-300

Note: This block was one of Alan Deal's most treasured items

PROVENANCE:

Alan Deal, private sale

Robert M. Gibbs, October 1987

A Superb Imperforate Between Pair



38

x38 ★

Carminé-lake vertical pair, [60-70], variety **imperforate between**, [60] (final State of 15) and [70] (State 12 of 17), lovely fresh vibrant colour and with large part original gum; superb quality and a wonderful example of this very rare variety. B.P.A. Certificate (1976). S.G. 123a, £22,000. Photo

£10,000-12,000

PROVENANCE:
Besançon, September 2020

The Pale Rosine Shade



39

- x39 ★田 A block of four, [86-97], [87A] final State (15), [97] *Queen's cheek* flaw, fresh mint with the lower pair remaining unmounted. Very fine and unique. Photo £1,500-1,800
- PROVENANCE:
Bryant Rose, March 1995
Lord Vestey, March 2015



40



41



42



43

- x40 ★ A single, [49B] penultimate State, large part original gum; a few short perfs. or tones on perfs., otherwise sound. Photo £180-200
- x41 ★ A single, [64A] final State, large part original gum; very fine. Photo £400-500
- PROVENANCE:
Oswald Marsh
- x42 ★ A single, [67A], final State (State 23) "rainstorm", vertical recuts above "κ", large part original gum; two small handstamps in violet on reverse. Photo £350-400
- PROVENANCE:
Oswald Marsh
- x43 ⊕ A single, [84A] final State, unmounted mint. Superb. Photo £400-500
- PROVENANCE:
Oswald Marsh

The “Original” Flaw



44

x44 ★

Carmin-lake [87B], the so-called “original” flaw to left of King’s head, fresh with large part original gum. A great rarity being one of only two mint examples of this extraordinary stamp recorded, this being by far the finer. Photo

£4,500-5,000

PROVENANCE:
Robert M. Gibbs, October 1987
Paul Sundback



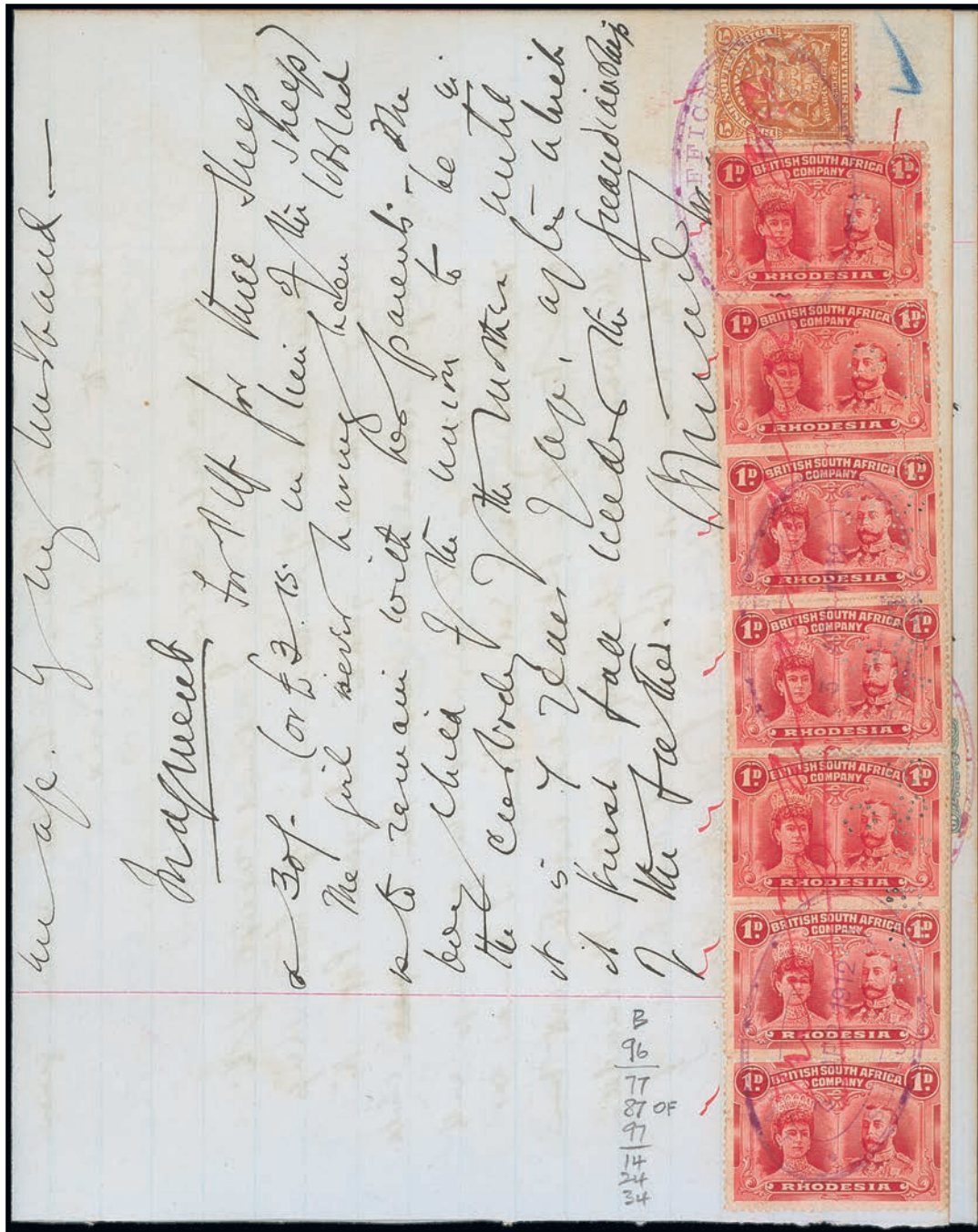
45

x45 ○

Carmin-lake, [87], the so-called “original” flaw to left of King’s head, neatly cancelled by Que Que double-ring datestamp for “7- FEB 191?” leaving the flaw clear; a very fine example of this rare stamp of which only nine used examples are recorded. Photo

£1,000-1,200

PROVENANCE:
Alan Deal, private sale
Robert M. Gibbs, October 1987



x46 Δ

Carmines-lake vertical strips of three, [14/24/34] and [77/87/97], [87] the “original”
 flaw, and a single [96] together with 1898-1908 Small Arms 5/- brown-orange and 10/-
 blue-green, all perfined “BSA/C”, dated in manuscript and cancelled with “PASS
 OFFICE/SELUKWE” oval datestamp on 1912 (30 Apr.) document, being a claim for “three
 head of cattle and five sheep”. A unique document, being the only example of the “original
 flaw” known fiscally used and the only example which is part of a multiple. Remarkable.
 Photo

£800-1,000

*Note: In the document the claimant states “The year that the white man entered the country,
 Dept came to my Kraal & said if I gave him cattle he would give me a wife. I gave him three
 head of cattle & 5 sheep and he went with them & he never gave me the wife promised”*

The “Lines” of 97-99B



47

x47 ★田

Carmine-lake block of four, [87B-97B], [87B] being the final State with original flaw repaired, [96B] with *King’s cheek* flaw and [97B] showing horizontal scratches through the south east corner ornament, fresh with large part original gum. An exceptionally rare multiple with these flaws, with only two mint examples of 97B with “lines” recorded to date. Photo

£1,200-1,500

PROVENANCE:
 Alan Deal, private sale
 Robert M. Gibbs, October 1987
 Lord Vestey, March 2015



48

x48 ⊕

Carmine-lake strip of three, [98B- 99B-100], the final State of Plate B and with [100] showing “lobster”, unmounted mint and superb. These are the only recorded mint examples of 98B and 99B with “lines” known to exist. Photo

£800-1,000



49

x49 ○

Carmine-lake, a used reconstruction of [97-99B], all neatly cancelled leaving the “lines” clear of the datestamps. Photo

£120-150

First Day Cover



50

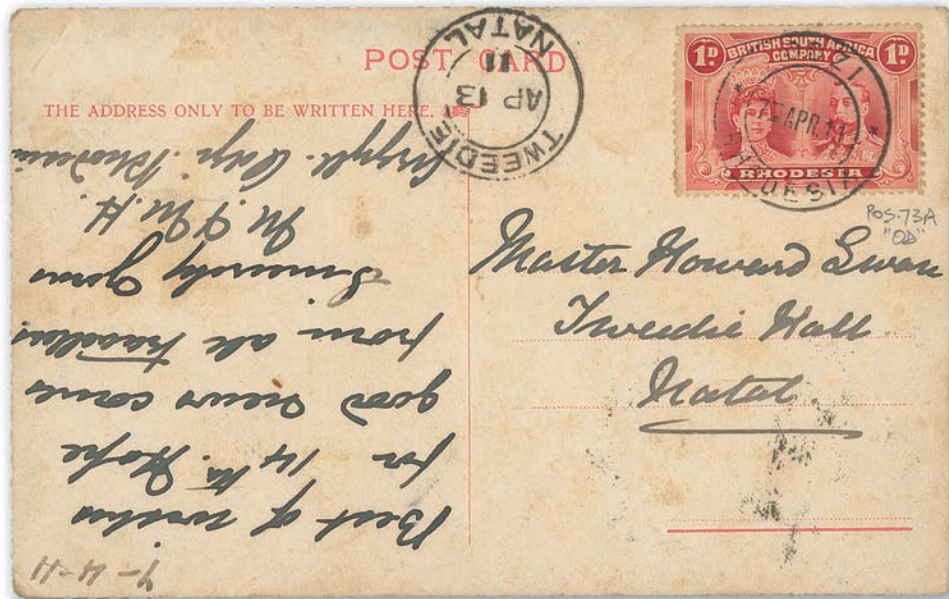
x50 ☒

1910 (11 Nov.) envelope from Bulawayo to Stockbridge, Edinburgh, bearing 1d. bright carmine horizontal pair and 1/2d. green with each cancelled by double-ring datestamp, arrival datestamp (10.12) on reverse; clean and attractive. The sole recorded first day cover and with only two postcards also known. Photo

£3,000-4,000

PROVENANCE:
Norman Levin
David Carson

Later Covers



51

x51 ☒

1911 (7 Apr.) postcard (Fusslein Animal Series, Giraffe) from Odzi to Tweedie Hall, Natal, bearing 1d. carmine-lake, [73] with “OD” flaw, neatly cancelled by double-ring datestamp with blank after day, the only example recorded, and with Tweedie arrival datestamp (13.4) alongside. Memoir 34, MO3, page 134. Photo

£400-500



52

x52 ☒

1911 (3 June) picture postcard (A Retinue of Servants, Blantyre, B.C.A.) from Fort Roseberry to Aberdeen, bearing 1d. carmine-lake, [34], cancelled by “859” BONC with despatch “FORT ROSEBERRY/N.E.RHODESIA” single-ring date with code “O” (the second recorded example after the Graetz Expedition cover) alongside and with the adhesive additionally tied by Broken Hill double-ring transit datestamp (14.6); central vertical crease though a very rare card. Photo

£400-500



53

x53 ☒ 1911 (13 Oct.) envelope from Chipongwe to Southampton, bearing 1d. rose-carmine, [50], neatly cancelled by double-ring datestamp, the reverse with Livingstone (14.10) and Southampton Packet Letter (4.11) transit datestamps. Exceptionally rare, being one of only two covers recorded from this small railway stop and store just south of Lusakas. Memoir 34, C10, pages 220, 222. Photo £700-800

PROVENANCE:
John Michael, September 1976
Alan Uria, July 2012

x54 ☒ 1914 (7 May) envelope ex the Montgomery Ward correspondence from Petauke to Chicago, bearing 1d. carmine-lake Plate A [82] (a very late state showing major flaw in right-hand value tablet) cancelled with squared-circle datestamp (month day, VR) applied upside down then corrected with a weaker strike, firm's arrival datestamp (19.6) at foot, Broken Hill transit datestamp (16.5) on reverse. Memoir 34, P9, page 271. Photo £300-350

PROVENANCE:
Paul Buechner

Unusual Usage

x55 ☒ 1913 (1 Oct.) Deutsche Ostafrika pictorial picture postcard from Tanga to Hamburg, bearing German East Africa 4h. green in combination with 1d. bright carmine, [33], sharing a fine strike of the "TANGA/DEUTSCHE/OSTAFRIKA" single-ring datestamp. A rare and most unusual franking. Photo £300-400

PROVENANCE:
Robert M. Gibbs, October 1987
Alan Uria July 2012



54



55

Two Pence

S.G. 126 variant i, Black and “pearl” or “silvery grey”, Long Gash printing

x56 ★ [25] *Lines by King’s cheek* and [46] *King’s extra curl*, fine mint £100-120

PROVENANCE:
Robert M. Gibbs, October 1987
Lord Vestey, March 2015

S.G. 127, Black-purple and slate-grey, Long Gash printing



57

x57 ★田 [34-40] marginal block of four, lightly mounted mint; a couple of very light tone spots, otherwise fine and a rare multiple. Photo £500-600

PROVENANCE:
Robert M. Gibbs, October 1987
Lord Vestey, March 2015



58



59



60

x58 ★ [2] *Gash in Queen’s ear*, part original gum, some hinge remnants, fine. R.P.S. Certificate (1986). Photo £120-150

PROVENANCE:
Paul Sundback

x59 ⊕ Unplated, a “large” example, unmounted mint; superb. R.P.S. Certificate (1986). Photo £100-120

PROVENANCE:
Paul Sundback

x60 ★ Unplated, large part original gum; fine. Photo £80-100

PROVENANCE:
Paul Sundback



61



62

S.G. 128, Black and slate-grey, Long Gash printing

x61 ★田

[3-9] marginal block of four with part imprint, [9] with “footprint” flaw, very fine mint. Photo

£300-400

PROVENANCE:
Lord Vestey, March 2015

RSC “B”, Black and grey-black, Hook printing

x62 ⊕田

[4-10] corner block of four with sheet number “166”, fresh unmounted mint. A superb and rare multiple. Photo

£1,200-1,500

S.G. 129, Black and slate, Hook printing



63

x63 ★田

[2-10] corner block of eight with imprint and sheet number “12”, [2] *Hook in Queen’s ear*, fresh mint; one stamp with trace of a hinge mark in one corner, the others unmounted mint. A fine and very rare positional multiple. Photo

£1,400-1,600

PROVENANCE:
Robert M. Gibbs, October 1987
Alan Uria, July 2012
Lord Vestey, March 2015



64

x64 ★

Unplated, an astonishing messy frame, part original gum. A highly unusual example. Photo

£50-70



65

x65 ○

[1-2] corner pair, [2] *Hook in Queen's ear*, nearly full original gum, both neatly cancelled-to-order with Gwelo 1912 datestamps; [2] with a thin though of fine appearance. Photo

£300-400

PROVENANCE:

John H. Sinton, December 1955
 David Forgan
 Robert M. Gibbs, October 1987
 Thomas S. Osdene, May 2001
 David Pitts, October 2016

RSC "H", Black and grey-black, Hook Ear printing



66

x66 ★

Unplated, fine with part original gum. Photo

£300-400



67



69

S.G. 130, Black and grey-black, Long Gash printing

x67 ★ 田

[39-50] corner block of six with small part imprint, [44] *King's wisp*, [50] *King's nostril* flaw, fresh mint; minor buckle on one stamp. Photo

£500-700

PROVENANCE:

Gerald Simpson, October 1982
Robert M. Gibbs, October 1987
Norman Levin, November 1993
Lord Vestey, March 2015

x68 ★

[25] *Lines by King's cheek* and [46] *King's extra curl*, mint; the latter with a couple of faint tones at foot, otherwise fine

£80-100

PROVENANCE:

Lord Vestey, March 2015

RSC "I", Black and grey-black, Thick Ear printing

x69 ★ 田

[42-48] block of four with printer's mark at upper left, the upper pair with the heads partly re-entered resulting in them appearing darker than the heads in the lower pair, fresh and very lightly mounted mint with the lower pair remaining unmounted. A very rare multiple in superb condition. Photo

£3,000-3,500

PROVENANCE:

Robert M. Gibbs, October 1987
Sir Gawaine Baillie, September 1986
Lord Vestey, March 2015

RSC “J”, Black and slate-black, Thick Ear printing



70

x70 ★田 [1-7] block of four, [2] *Queen's thick ear* and [6] *Tiara* flaw, fresh mint with all stamps previously mounted. Fine and a very rare and important multiple. Photo £1,500-1,800

PROVENANCE:
Norman Levin, November 1993
Lord Vestey, March 2015

Two Pence Halfpenny

x71 ★ A selection comprising ultramarine, bright ultramarine, dull blue (3), chalky blue (3) and deep dull blue, part to large part original gum; one bright ultramarine with a small thin, otherwise fine and an attractive range of shades. S.G. 131-133, RSC “A” £100-120

x72 ★田 A selection of blocks of four comprising ultramarine, bright ultramarine, dull blue and chalky blue, fresh mint with a few stamps unmounted. A most attractive quartet. S.G. 131-133 £200-250

x73 ⊕田 Ultramarine complete sheet of fifty (5x10) with lower sheet number “12”, divided into two horizontally at centre, fine unmounted mint; very fine. S.G. 131 £500-600

PROVENANCE:
Dr. Alan Knott-Craig, July 2015

x74 ★田 Bright ultramarine block of twenty-five (5x5), being the top half of a sheet with sheet number “49”, fresh mint; traces of mounts in the margin and with small parts of hinge remainder at lower left and right stamps; very fine. S.G. 131a £250-300

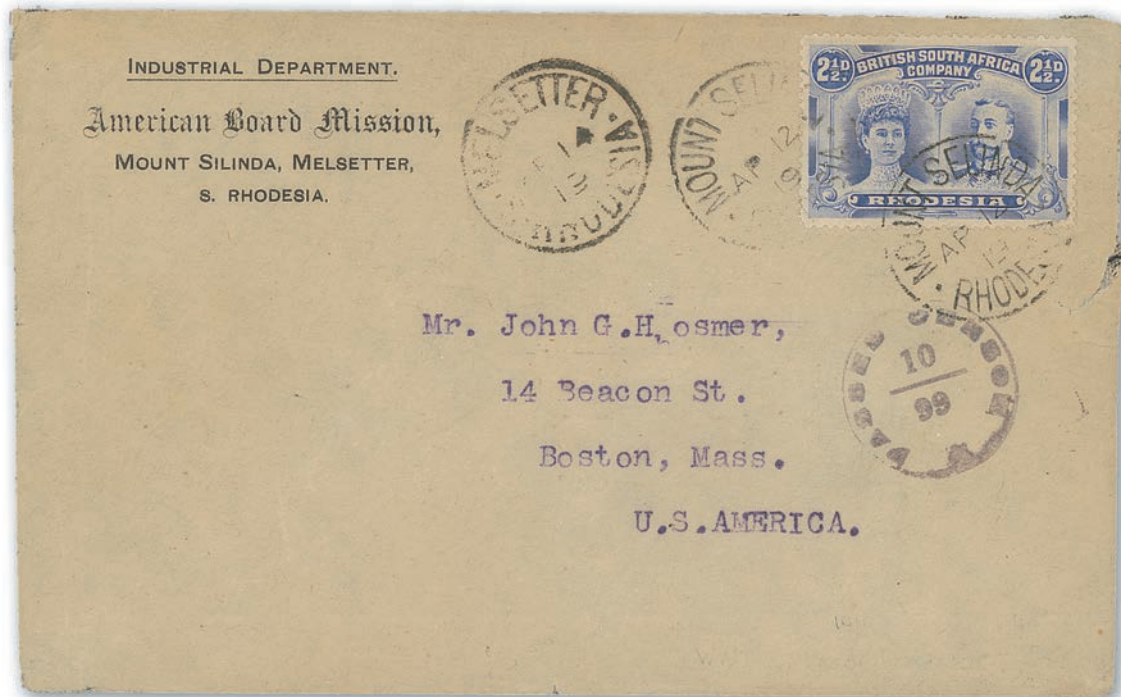
PROVENANCE:
Dr. Alan Knott-Craig, July 2015

x75 ⊕田 Bright ultramarine marginal block of six (3x2) from the top of the sheet, [2-9], with full imprint, unmounted mint. S.G. 131a £50-60

x76 ★田 Deep dull blue block of twenty-five (5x5), [26-50], the lower half of a sheet with full sheet margins and imprint, [27] *Dot on King's forehead*, [28] *dot by lower left scroll* and [32] *Dot by second ball to left of central ornament at top*, fresh mint with a couple of stamps in the top row previously mounted, the others remaining unmounted. An impressive and almost certainly unique multiple of RSC “A” £400-500

PROVENANCE:
Bryant Rose, March 1995
Lord Vestey, March 2015

Cover



77

x77

1919 (12 Apr.) American Board Mission envelope from Mount Silinda to Boston, U.S.A., bearing 2½d. ultramarine cancelled by two “MOUNT SELINDA/RHODESIA” single-ring datestamps with month before day, and with Melsetter transit datestamp (14.4) at left, censor handstamp towards foot; small tear at right, otherwise fine and rare. Memoir 34, page 126, M64. Photo

£600-700

PROVENANCE:
 Alan Uria, July 2012
 Norman Levin
 David Carson, July 2016

SPINK LIVE

Spink Live is now running on a new and improved bidding platform
 Accessible online through www.spink.com and also available iOS and Android devices

Bidding on 'Spink Live' remains free of charge

MY ACCOUNT
 Login
 Consign An Item
 Watched Lots
 My Bids

Medals
 Stamps
 Watches
 Whiskies & Spirits
 Wines

LOT 3: SEAL, 5 songs, including all
 LOT 4: RANDY CRAWFORD & JOE SAMPLE, 4

Slide to bid €

Click to Login / Register Tick your Interests Scroll the Lots Slide to Bid

Download on the App Store
 GET IT ON Google Play

For any enquiries or further assistance please contact:
 Tel: +44 (0)20 7563 4112 | Email: spinklive@spink.com

SPINK
 WHERE HISTORY IS VALUED

Three Pence

S.G. 134, Purple-brown and ochre, Long Gash printing

x78 ★

[2] *Long gash in Queen's ear*, with a distinctly brownish frame, slight vertical crease, fine mint, and [5] with full sheet margins and sheet number "75", unmounted mint

£120-150



79



80

x79 ★田

[44-50] corner block of four with small part imprint, lightly mounted mint, fine and most attractive. Photo

£300-350

x80 ○

[41-46] vertical pair, [46] *King's extra curl*, both neatly cancelled with Antelope Mine skeleton datestamp for "JA 4/12" (A3), the lower stamp crossed by blue crayon; fine and scarce. Photo

£100-120

S.G. 135, Purple and yellow-ochre, Long Gash printing



81



83

x81 ★田

[34-40] marginal block of four, fresh lightly mounted mint with the lower pair remaining unmounted. Most attractive. Photo

£300-350

PROVENANCE:
William O'Connell, March 1986
Lord Vestey, March 205

x82 ★

Unplated singles (3), mint with one unmounted

£60-80

x83 ⊕

[4] in extraordinary colours, fine unmounted mint. Photo

£120-150

PROVENANCE:
Donald Napier, April 2017

S.G. 137, Violet and ochre, Thick Ear printing



84



85

- x84 ★

[2] *Queen's thick ear*, mint and very fine. Photo

Note: It is believed that no block of four or larger of this printing is recorded

£150-200
- x85 ★

[15] *King's eyebrow line*, mint and very fine. Photo

£150-200



86

- x86 ☒

Unplated and used with 1898 2½d. (2) and 1913-19 Admiral ½d. (small fault at top), 2d. and 4d., all neatly cancelled and tied by Salisbury double-ring datestamp on 1918 (18 Mar.) envelope registered to Oakland, California, bearing black on pink registration label and with U.S. "REGISTERED" handstamp and numbers below the adhesives. Very rare and a most attractive five colour franking. **The sole example of S.G. 137 on cover recorded by the owner.** Photo

£600-700

RSC “B”, Maroon and ochre, Hook printing



87

x87 ⊕ ㊦

[1-15] block of fifteen from the top three rows of the sheet with full sheet margins and sheet number “27”, [2] *Hook in Queen’s ear*, [15] *King’s extra eyebrow* and “medal cuts”, superb unmounted mint. A beautiful and exceptionally important multiple. Photo

£3,500-4,000

PROVENANCE:
Thomas S. Osdene, May 2001



88

x88 ⊕ ㊦

[29-35] marginal block of four, unmounted mint. Superb. Photo

£350-400

PROVENANCE:
Lord Vestey, March 2015



89



90



91



92

RSC “C”, Deep reddish purple and ochre, Hook printing

x89 ★ [20] with “medal cuts”, fine mint. A scarce printing. Photo £300-350

PROVENANCE:
Robert M. Gibbs, October 1987
Lord Vestey, March 2015

x90 ★ [27] with scratch in top margin above “RIT”, some hinge remnants, otherwise fine mint and a scarce printing. Photo £300-350

RSC “D”, Dull claret and ochre, Thick Ear printing

x91 ★ [9], mint; fine and rare. Photo £300-350

x92 ★ [16] *crescent smear to right of King*, fine mint and rare. Photo £300-350

RSC “E”, Deep claret and pale yellow-ochre, Thick Ear printing



93



94

x93 ★ [28], fine mint. A superb example of this very rare stamp. Photo £1,800-2,000

PROVENANCE:
Donald Napier, April 2017

x94 ◻ [9-15] block of four, [15] *King’s extra eyebrow*, both vertical pairs neatly cancelled with Bulawayo 28 November 1912 double-ring datestamps, unwashed; some light red crayon marks at base. A fine, scarce and attractive used multiple. Photo £200-250

PROVENANCE:
Donald Napier, April 2017

RSC “G”, Brown-purple and ochre, No Gash printing with Monochromatic Frame



95



96

x95 ★ [2] No gash in *Queen's car*, fine mint. Photo £300-350

PROVENANCE:
Donald Napier, April 2017

x96 ★田 [4-10] block of four with small part imprint and sheet number “498”, [10] with “medal cuts”, large part original gum with the upper pair sharing a single hinge remainder, the lower pair remaining unmounted mint; thin in top margin and at stamp hinge area, [5] with diagonal creases. An exceptional multiple and considered unique as a block. The sole block of all the “no gash” printings. Photo £7,000-9,000

PROVENANCE:
Dick Pollitt
Robert M. Gibbs, October 1987
Sir Gawaine Baillie, September 2006
Lord Vestey, March 2015



97



98

x97 ★ [43], fine mint. Scarce. Photo £300-400

x98 ○田 [4-10] block of four, both vertical pairs neatly cancelled with Plumtree double-ring datestamp for 25 November 1913. A fine and rare multiple. Photo £200-250

PROVENANCE:
Thomas S. Osdene, May 2001
David Pitts, October 2016

RSC "I", Deep reddish purple and ochre, No Gash printing



99



100



101

- x99 ★ [1] *two dots above second rayon*, large part original gum. Fine and extremely rare. Photo £1,200-1,500
Note: This and the following stamp, [6], were once a vertical pair
 PROVENANCE:
 Robert M. Gibbs, October 1987
 Sir Gawaine Baillie, September 2006
 Donald Napier, April 2017
- x100 ★ [6], *flaw under lip of King's curl*, fresh mint; diagonal bend, otherwise fine. Photo £700-800
 PROVENANCE:
 Robert M. Gibbs, October 1987
 Lord Vestey, March 2015
- x101 ★ [9], fine mint. Scarce. Photo £1,200-1,400
Note: This stamp is believed to have come from the same sheet as the previous two stamps
 PROVENANCE:
 Don Napier, April 2017



102

- x102 △ [2] *No gash in Queen's ear* used with 1898 4d. olive sharing Mazoe double-ring datestamp for 8 January 2014 on piece; very fine and most attractive. Photo £100-120

RSC "J", Deep rose-lilac and ochre, No Gash printing



103



104



105



106

- x103 ★ Unplated, fresh mint, a well-centred and most attractive example. A lovely stamp. Photo £400-500
 PROVENANCE:
 Donald Napier, April 2017
- x104 ★ Unplated, fine mint. Scarce. Photo £300-350
- x105 ⊕ [9], fine unmounted mint. Scarce. Photo £300-350
- x106 ★ Unplated, a variant with lovely bluish heads, fine mint. Photo £350-400

RSC “K”, (Paler, brighter) brown-purple and (pale orange) ochre, Thick Ear printing



107

x107 ★

[20], doubled shading lines above and to the right of the King’s head which are typically found in the right-hand column of the MG and TE 1 head plates, well-centred, beautiful colours and fresh mint. A great discovery item and offered with an example of S.G. 137 violet and ochre, [20], for comparison. Photo for both

£2,500-3,000

Note: Viewers are advised to read the article by Bob Gibbs on this stamp which appeared in the RSC Journal, March 2017, a copy of which accompanies this remarkable stamp

PROVENANCE:
Donald Napier, April 2017

Four Pence

S.G. 138, Greenish black and orange, Long Gash printing



108

x108 ⊕

A complete sheet of fifty with sheet number “144”, the top three rows now removed from the remainder and including [2] *Long gash in Queen’s ear*, unmounted mint, a few separated perfs. at top, the remainder, without gum, including [25] *Lines by King’s cheek* and [46] *King’s extra curl*, manuscript “16/8” in blue crayon at foot indicating full sheet face value, good colour though with a large part of the gum washed off and a few separated perfs. at top. The top block being the largest mint multiple of this printing. An exceptional offering. Photo

£3,000-3,500

PROVENANCE:
Gerald Simpson, December 1982
Sir Gawaine Baillie, September 2006
Dr. Alan Knott-Craig, May 2015

S.G. 139, Brown-purple and orange, Long Gash printing

- x109 ★ [2] Long gash in Queen's ear, two shades, one with paler heads; one with hinge remnants and some black offsetting on reverse, the other fine mint £120-150
- PROVENANCE:
Paul Sundback for one

S.G. 140, Black and orange, Long Gash printing

- x110 ★ [2] with aniline frame, *Long gash in Queen's ear*, [25] *Lines by King's cheek* and [46] *King's extra curl*, mint; [2] with a thin, [46] unmounted £80-100
- PROVENANCE:
Lord Vestey, March 2015



111



112

S.G. 140, variant iii, Brownish black and orange, Long Gash printing

- x111 ★ Unplated, lovely sepia heads, hinge remnant otherwise fine mint and very rare. Photo £150-200

RSC "A", Grey-black and orange, Mid Gash printing

- x112 ★ [2] *Mid gash in Queen's ear*, very well-centred, fine mint. A lovely stamp. Photo £150-200
- PROVENANCE:
Robert M. Gibbs, October 1987



113

- x113 ⊕田 [11-17] block of four, fresh unmounted mint. A superb and rare multiple. Photo £800-1,000
- PROVENANCE:
Robert M. Gibbs, October 1987
Norman Levin, November 1993
Lord Vestey, March 2015



114



117



116

RSC "B", Black and orange, Hook printing

x114 ★

[2] *Hook in Queen's ear*, fine mint. Photo

£100-120

PROVENANCE:
"County", 2003



115

x115 ⊕田

[11-17] block of four, superb unmounted mint. Photo

£600-800

PROVENANCE:
Norman Levin, November 1993
Lord Vestey, March 2015

RSC "C", Blue-black and dull orange, Hook printing

x116 ★

[41], deep shade, unused with part original gum. Scarce. Photo

£70-80

PROVENANCE:
Robert M. Gibbs, October 1987

x117 ★

[47], marginal with small part imprint, very fine mint. Photo

£80-100

RSC “D”, Olive-black and yellow-orange, Hook printing

One of the Greatest Double Head Multiples



118

x118 ★ ㊦

[1-10] block of ten, being the top two rows of the sheet with full imprint and sheet number “30”, [2] *Hook in Queen’s ear* being re-entered thus showing deep and better inked heads than the stamps around it, [5] “medal cuts”, [8] with printer’s mark and [10] “medal cuts”, fresh mint with a couple of hinge marks in top margin only, all stamps remaining unmounted mint. Unique and exceptionally fine. A monumental rarity, being one of the greatest of all Double Head multiples, this sheet being printed from the SG3 Head plate which only produced this sheet and the 2d. RSC “B”. Photo

£25,000-30,000

Note: To date it appears that there is only one sheet of this printing recorded, this sheet originally having been divided in to four multiples

PROVENANCE:

Gerald Simpson, December 1982 and accompanied by his original album page for this block

Robert M. Gibbs, October 1987

Sir Gawaine Baillie, September 2006

Lord Vestey, March 2015



119

x119 ★田

[16-22] marginal block of four, one very lightly mounted the others unmounted, very fine mint. An exceptional and very rare multiple from this printing with only one other mint block of four from the lower right corner remaining intact. Photo

£6,000-8,000

RSC "E", Blue-black and yellow-orange, Thick Ear printing



120

x120 ⊕

[4], marginal with small part imprint, *Queen's cheek and King's temple flaws*, fine unmounted mint. Photo

£180-200

RSC "F", Blue-black and yellow-orange, No Gash printing



121

x121 ★

[5] State 2 or 3, fine mint. Photo

£120-150

Five Pence

S.G. 141, Purple-brown and olive-green and S.G. 141a, Purple-brown and olive-yellow, Long Gash printings

- x122 ★ [2] from the two printings, both with *Long gash in Queen's ear*, fine mint. An attractive pair fully demonstrating the shade differences, fine mint £80-100
- PROVENANCE:
Paul Sundback

RSC "A", Reddish brown and brown-ochre, The "Pretender", Long Gash printing



123



124

- x123 ★ [2] *Long gash in Queen's ear*, part original gum. Rare. Photo £150-200
- PROVENANCE:
Clive Wolpert, April 2000
Lord Vestey, March 2015

- x124 ★ [25] *Lines by King's cheek*, large part original gum; fine and rare. Photo £200-250
- PROVENANCE:
Alan Uria, July 2012

RSC "B", Reddish brown and ochre, The so-called "Roman ochre", Long Gash printing



125



126



127

- x125 ★ [44] *King's wisp*, large part original gum; fine and scarce. Photo £250-300

- x126 ★ [46] *King's extra curl*, part original gum with a few paper adhesions, otherwise sound and of fine appearance. The sole example of this variety from this printing recorded to date. Gibbs Certificate (2013). Photo £400-500
- PROVENANCE:
"Royal Palm", March 2018

- x127 ⊕ Unplated "deep frame" variant of A or B, beautifully centred and superb unmounted mint. A stunning unlisted shade. Photo £250-300
- PROVENANCE:
Paul Sundback

S.G. 141ab error, Purple-brown and ochre, Thick Ear printing



128

x128 ★田

[27-33] block of four, fresh and very fine mint with the lower pair remaining unmounted. A very rare and exceptional multiple. B.P.A. Certificate (1981). Photo

£1,500-2,000

PROVENANCE:

Besaçon, September 2020



129



130

x129 ★

Unplated, fine mint. Photo

£250-300

x130 ★

Unplated, distinctive bright shades, fresh mint; fine and most attractive. Photo

£300-350

S.G. 141ab error, variant, Distinctive bright reddish brown and (yellowish) olive-bistre, Thick Ear printing



131

x131 ○

Unplated, neatly cancelled with "VICTORIA FLS/S. RHODESIA" 26mm. skeleton datestamp for December 3 1912; very fine. Photo

£120-150

S.G. 143a, Lake-brown and green, No Gash printing

An Extremely Fine Example of this Very Rare Stamp



132

x132 ★

Unplated, wonderful fresh bright colours and perfectly centred, large part original gum. A truly exceptional example of this great rarity of which only about a dozen unused/mint examples are recorded, this being at the very pinnacle for both appearance and overall quality. One of the rarest items in the collection. Robert M. Gibbs Certificate (2013).
Photo

£18,000-20,000



133



134

S.G. 143 Lake-brown and olive, No Gash printing

x133 ★ [34], a very late state of the “exclamation” flaw, hinge remnant, fine mint. Photo £150-200

RSC “C”, Lake-brown and yellow-olive, Thick Ear printing

x134 ★ [2] *Queen’s thick ear*, fresh lightly mounted mint; tiny fox mark on one perf. tip at upper right corner, otherwise very fine. Extremely rare with only four examples recorded to date, one of which is defective. Gibbs Certificate (2013). Photo £2,200-2,500

PROVENANCE:
 “Montgomery”, December 2002
 “Royal Palm”, March 2018

Six Pence

Frame Plate I



135



136



137



138

S.G. 144, Red-brown and mauve, Long Gash printing

x135 ★ [2] *Long gash in Queen’s ear*, mint and very fine. Photo £70-80

x136 ○ [2] *Long gash in Queen’s ear*, neatly cancelled-to-order at foot with part Gwelo 1919 double-ring datestamp leaving the Gash entirely clear, very fine. Very rare on this stamp and exceptionally so on [2]. Photo £250-300

S.G. 145a, Bright chestnut and mauve, Long Gash printing

x137 ⊕ [2] *Long gash in Queen’s ear*, marginal with small part imprint, mounted in the selvage only. Superb. B.P.A. Certificate (1979). Photo £1,000-1,200

PROVENANCE:
 Paul Sundback

x138 ★ [43] with printer’s mark at upper left, fine mint. Photo £300-350



139



140



141

RSC “A”, Chocolate and deep rose-lilac, Long Gash printing

x139 ★ [2] *Long gash in Queen’s ear*, lightly mounted mint with a small single hinge mark; very fine. Photo £350-400
 PROVENANCE:
 Christie’s Robson Lowe, September 1994
 Lord Vestey, March 2015

x140 ★ Unplated in an intermediate shade between RSC “A” and “B”, reddish brown and deep rose-lilac, a large example, mint; unusual. Fine and rare. Photo £100-120

RSC “B”, Reddish brown and deep rose-lilac, Long Gash printing

x141 ★ Unplated, a large example; fine and rare. Photo £200-250

RSC “C”, Red-brown and deep rose-lilac with “coppery” heads, Hook printing



142

x142 ★ [43], exceptional colours and well-centred, lightly mounted mint with small hinge remainder. One of the great rarities of the Double Head issue, of which only six or seven mint examples have been recorded to date, not all of which are fine. Considered the finest of this exceptionally rare stamp. Robert M. Gibbs Certificate (2011). Photo £5,000-6,000

Note: The head plate is red-brown though of a much deeper hue. The heads are clearly defined and have been referred to as “coppery”. The frame plate is towards plum with the ink used being very distinct and unlike that used for any other 6d. frame

PROVENANCE:
 William O’Connell, March 1986 when contained in the then unique block of four
 Sir Gawaine Baillie, September 2006
 Lord Vestey, March 2015



143

x143 ★ Unplated and in deeper shades than offered in the previous lot; fine mint. One of the great rarities of the Double Head issue, of which only six or seven mint examples have been recorded to date, not all of which are fine. Photo £5,000-6,000



144

x144 ○ [19/24-25] L-shaped block of three cancelled with several part Bulawayo double-ring datestamps for 17 August 1912; fine and a very rare multiple of this unusual printing. Photo

£250-300

RSC "D", Red-brown and crimson within the S.G. 145a family, Short Gash printing



145



146

x145 ★ [36], fine mint with large part original gum. Photo

£250-300

x146 ★ Unplated, fine mint. Photo

£250-300



147

x147 △ Unplated vertical pair and a single tied on piece with several Registered Bulawayo single-ring datestamps for July 1912. A fine, lovely and rare usage. Photo

£200-250

Intermediate shade between RSC “E”, Chocolate and maroon and RSC “F” purple-brown and deep claret, Thick Ear printings



148

x148 ★田

[1-7] block of four, [2] *Queen's thick ear*, lightly mounted mint; [7] with a small thin and a couple of tone marks, otherwise fine. A very rare block. Photo

£1,500-1,800

PROVENANCE:
Norman Levin, November 1993
Lord Vestey, March 2015



149



150

x149 ★

[2] *Queen's thick ear*, lightly mounted mint with a small single hinge remnant; a fraction of toning at upper left, otherwise fine and very scarce. Photo

£120-150

PROVENANCE:
Lord Vestey, March 2015

x150 ★

[4] *Queen's check* flaw, fine mint. Photo

£80-100

RSC “F”, Purple-brown and deep claret, Thick Ear printing



151

x151 ★

[8] with very deep colours, almost monochromatic, fine mint. Scarce. Photo

£250-300

RSC “G”, Red-brown and maroon, Thick Ear printing, “Waxy” Heads



152

x152 ★田

[17-23] block of four, the so-called “normal” shade of this printing, part to large part original gum with some hinge remainders; the right-hand vertical pair with traces of thinning though of very fine appearance. A great rarity, being the sole block of four of this printing recorded thus far. Photo

£3,000-3,500

PROVENANCE:

Bryant Rose, March 1995

Alan Uria, July 2012

Lord Vestey, March 2015



153

x153 ★

[40], the “true” shade where the colour shimmers, fresh lightly mounted mint with a small single hinge mark. Fine and extremely rare with only three recorded, one of which is defective. Photo

£700-800

PROVENANCE:

Robert M. Gibbs, October 1987

Lord Vestey, March 2015



154

x154 ○

[10], the “true” shade where the colour shimmers, full original gum, excellent colours and neatly cancelled with large part indistinct double-ring datestamp; a fine reference example for the student. Photo

£100-120

Six Pence

Frame Plate II

RSC "H", Purple-brown and brown-purple, Thick Ear printing



155

x155 ★

Unplated, a large example, large part original gum. Scarce. Photo

£150-200

Eight Pence

S.G. 146, Black and purple, Mid Gash printing



156

x156 ★

[36], "teardrop" re-entry and smoky vignette, lovely colours, large part original gum and well-centred for this stamp; a couple of shortish perfs. at right and faint tone on reverse. Rare. B.P.A. Certificate (1981). Photo

£2,000-2,500

PROVENANCE:
Lord Vestey, March 2015



157

x157 ★

Unplated, large part original gum and excellent colours. A very fine and attractive example of this extremely rare stamp. B.P.A. Certificate (1980). Photo

£2,800-3,000

PROVENANCE:
Besançon, September 2020

S.G. 147, Dull purple and purple, Long Gash printing



158

x158 ★田

[4-10] corner block of four with sheet number “166”, fresh colours, large part original gum; light horizontal crease in top margin in no way detracting from this scarce multiple. Photo

£800-1,000

PROVENANCE:

Gerald Simpson, November 1982

Norman Levin, November 1993

Lord Vestey, March 2015

S.G. 148, Greenish black and purple, Mid Gash printing



159



160

x159 ⊕

[2] *Mid gash in Queen's ear*, marginal, fresh colours, unmounted mint; very fine. Photo

£250-300

PROVENANCE:

Oswald Marsh

x160 ○

Unplated vertical pair, superb colours and with full original gum, each neatly cancelled with “large” “VICTORIA/S. RHODESIA” datestamp (letters 3mm. high) for 22 March 1917. Fine and a very rare cancellation on Double Heads used only from this date. Memoir 34, V17. Photo

£250-300

PROVENANCE:

Norman Levin, November 1993

Ten Pence

S.G. 149, Scarlet and reddish mauve, Long Gash printing



161

x161 ⊕田

[1-7] corner block of four with small part imprint, [2] *Long gash in Queen's ear*, wonderful colours and superb unmounted mint. Very rare with only one other block from the Simpson collection with full sheet margins recorded. Photo

£500-600

PROVENANCE:

Robert M. Gibbs, October 1987



162

x162 ○田

[2-8] marginal block of four affixed to small piece, each vertical pair cancelled-to-order with Salisbury double-ring datestamp for 17 April 1913 and ranked as very rare on this printing; a few toned perfs., etc., otherwise sound. Photo

£350-400

The Unique Makaha Cover



163

x163 ☒

1920 (Sept.) *Oswald Marsh* envelope registered from Makaha to London, bearing scarlet and reddish mauve cancelled by double-ring datestamp with blank before two year date and with blank registration label at left similarly cancelled; the reverse (tear on flap through opening) with Salisbury (6.9), London (5.10) and Norwood (6.10) datestamps; light fold at right not affecting the adhesive. Very fine and exceptional being the only known example of this postmark recorded. Memoir 34, page 112, M9. Photo

£7,000-8,000

PROVENANCE:
David Pitts, October 2016

S.G. 150, Carmine and deep purple, Long Gash printing



164

x164 ★田

[41-47] marginal block of four with small part imprint, [46] *King's extra curl*, large part original gum with the lower pair remaining unmounted; graces of gum bends though a rare and most attractive multiple. B.P.A. Certificate (2007). Photo

£1,500-2,000

PROVENANCE:

Clive Wolpert, September 2000

Lord Vestey, March 2015

S.G. 150, variant, Deep rose-red and (aniline) deep purple, Long Gash printing



165

x165 ★田

[1-7] corner block of four, [2] *Long gash in Queen's ear*, strong fresh colours and mounted once in top margin only. An extremely rare and important multiple. S.G. 150 variant. Photo

£5,000-6,000

PROVENANCE:

Sir Gawaine Baillie, September 2006

"Dubois", March 2020

The “Vermilion” Printings

The Vermilion family comprises RSC “C”, “D”, “E” and “F”, all of which are represented in this one auction

RSC “C”, Scarlet-vermilion and maroon, Thick Ear printing



166



167

x166 ★田

[3-9] block of four, [4] *Queen's check* flaw and [8] with printer's mark at lower left, large part original gum with the lower pair sharing only a small hinge mark; a couple of shortish perfs., [4] and [8] with a couple of small tones. The sole recorded block of this printing. A great rarity. Photo

£4,000-5,000

PROVENANCE:

William O'Connell, March 1986
Robert M. Gibbs, October 987
Norman Levin, November 1993
Lord Vestey, March 2015

x167 ★

Unplated, well centred and fresh with large part original gum; very fine and rare in this condition. Photo

£1,200-1,500

RSC “D”, Carmine-vermilion and maroon, Thick Ear printing



168



169

x168 ★

Unplated marginal horizontal pair from the left of the sheet, large part original gum sharing just a single hinge remainder. Very fine. The only recorded multiple of this very rare stamp. Robert M. Gibbs Certificate (2003).Photo

£2,500-3,000

PROVENANCE:

Robert M. Gibbs, private sale
Spink, October 2003
Lord Vestey, March 2015

x169 ○

[22-23] horizontal pair, unwashed and with full original gum, wonderful colours and both neatly cancelled with Hartley double-ring datestamp for 31 May 1918. An exceptional and very rare multiple which might be considered to be an RSC “C”. Photo

£250-300



170



172



173

- x170 ○ [6] “Tiara Smash”, unwashed with virtually full original gum and cancelled with Hartley double-ring datestamp for 13 December 1918; very fine. Photo £200-250

RSC “E”, Vermilion and maroon, Thick Ear printing



171

- x171 ★ Unplated and with a distinctive highly fugitive frame which is paler than usual, fine mint. Only one other fine mint example recorded and considered one of the rarest of all Double Head stamps. Photo £3,500-4,000
- x172 ○ [3] with “z” flaw, full original gum, large and small part Bulawayo datestamps. Very rare. Photo £200-250
- x173 ○ [13] with printer’s mark at upper left corner, neatly cancelled with Victoria Falls 8 March 1917 datestamp; a little washed though remaining of exquisite appearance. Photo £180-200

RSC “F”, Orange-vermilion and maroon, Thick Ear printing



174

- x174 ★ [10] with flaws in left-hand value tablet and at upper corner on central column, exceptional colours and almost perfectly centred, large part original gum; light wrinkles. The finest of the three or four recorded mint examples of this incredibly rare printing. Photo £4,500-5,000

PROVENANCE:
 William O’Connell, March 1986
 Sir Gawaine Baillie, September 2006
 Lord Vestey, March 2015

One Shilling



175



176



179

S.G. 151, Grey-black and deep blue-green, Long Gash printing

- x175 ★田 [44-50] corner block of four with full sheet margins, the upper pair lightly mounted and the lower unmounted mint. A rare multiple. Photo £500-600
- x176 ○ Unplated, neatly cancelled with Umtali double-ring datestamp with stars (U21) for 11 November 1910, the first day of issue. A rare postmark, only three examples having been reported. Photo £180-200

S.G. 151a, Black and deep blue-green, Mid Gash printing



177



178

- x177 ★田 [1-7] block of four, [2] *Mid gash in Queen's ear*, fresh colours, mint with a few hinge remainders in places. A fine and rare block. Photo £1,800-2,000
- PROVENANCE:
Norman Levin, November 1993
Lord Vestey, March 2015
- x178 ⊕ [2] marginal with small part of imprint, *Mid gash in Queen's ear*, heads etched on reverse, fine unmounted mint £180-200
- x179 ★ [2] *Mid gash in Queen's ear*, lovely colours, large part original gum, fresh and very fine. Photo £150-200
- PROVENANCE:
Besançon, September 2020

RSC “B”, Black and turquoise-blue, Mid Gash printing



180

- x180 ★ [1-2] corner pair with small part of imprint, [2] *Mid gash in Queen’s ear*, large part original gum. A fine and scarce multiple. Photo £250-300

RSC “B”, variant, Deep blue-black and (deeper more aniline) turquoise-blue, Mid Gash printing



181

- x181 ★ Unplated, a huge example with lovely colours; very fine and rare. Photo £300-350
 PROVENANCE:
 “Royal Palm”, March 2018

RSC “C”, Black and dull blue-green, Mid Gash printing



182



183

- x182 ○ Unplated vertical pair with light and fine Fort Jameson double-ring datestamps for 22 April 1913; very fine. Photo £120-150
 PROVENANCE:
 Norman Levin
- x183 ○ Unplated, cancelled with a large part strike of the “RECORD BRANCH G.P.O./LIVINGSTONE” double-ring datestamp in violet for 21 August 1913, the only recorded example; very fine. Memoir 34, pages 246, 254, L25. Photo £400-500

S.G. 152a, Purple-black and blue-green, Long Gash printing



184



185



186

- x184 ★ Unplated, lovely fresh colours, fine mint. A most attractive example. Photo
£80-100
- x185 ★田 [3-9] block of four, lovely pale shades variant of this printing, large part original gum. A rare and lovely multiple in this shade. Photo
£700-800
- PROVENANCE:
Besançon, September 2020
- x186 ★ [25] *Lines by King's cheek*, fine mint. Photo
£120-150



187



188



189

- x187 ★ [2] *Long gash in Queen's ear*, large hinge remnant, fine mint. Photo
£120-150
- x188 ○ [28], neatly cancelled with large part "M.O. BRANCH/G.P.O. SALISBURY" double-ring datestamp for 30 March 1911; some paper adhering to reverse otherwise fine and a very rare cancellation with only this and 11 April 1912 dates recorded. Memoir 34, pages 148, 161, S37. Photo
£150-200
- x189 ○ Unplated, excellent colours being unwashed with large part original gum, neatly cancelled by Livingstone double-ring datestamp for 29 January 1912; very fine and most attractive Photo
£70-80

RSC “D”, Brownish black and turquoise-green, Long Gash printing



190



191

x190 ★田

[42-48] marginal block of four with large part imprint, [43] with printer’s mark at upper left, lightly mounted mint with the lower pair remaining unmounted mint. Fine and attractive. An exceptionally rare and almost certainly unique multiple. Photo

£800-1,000

PROVENANCE:

Norman Levin, November 1993
Lord Vestey, March 2015

x191 ○

[18-23] vertical pair, unwashed and of stunning colour, both cancelled with Gadzema double-ring datestamps for 9 January 1911 with the strike on [23] showing weak “ZEMA” virtually failing to print. Outstanding. Memoir 34, page 76 and outside front cover, G1/3. Photo

£200-250

PROVENANCE:

Robert M. Gibbs, October 1987
Norman Levin

RSC “E”, Blue-black and turquoise-blue, Thick Ear printing



192

x192 ★

[4] *Queen’s cheek and King’s eyebrow* flaws, exceptionally well-centred and lovely fresh colours, large part original gum. An outstanding example of this very rare stamp of which only a handful of examples are recorded, this being as fine as any. Brandon Certificate (1991). Photo

£7,000-8,000

PROVENANCE:

Alan Uria, July 2012
Lord Vestey, March 2015

RSC “F”, Black and (pale) turquoise-blue, No Gash printing



194



193



195

- x193 ★ [2] *No gash in Queen's ear*, fresh and fine mint. Photo £200-250
- x194 ○ Unplated vertical pair, sharing exquisite Kashitu double-ring datestamp for 22 March 1914. Absolutely superb. Photo £350-400
 PROVENANCE:
 Norman Levin
- x195 ○ Unplated vertical pair, both cancelled with fine Namwala double-ring datestamps for 8 July 1914; very fine and a lovely pair. Photo £250-300



196

- x196 △ [1-7] block of four and a single, on piece cancelled with pen stroke in red ink and twice cancelled with “OFFICE OF ASSISTANT MAGISTRATE/UMZINGWANI” boxed datestamp for 21 November 1913. An amazing and highly unusual item. Photo £150-200

RSC “G”, Black and (bright) turquoise-blue, No Gash printing



197



198

x197 ★ [3] with a lovely intense frame, well-centred, fresh with part original gum and very fine. Rare. Photo £300-350

x198 ★ [11-12] marginal pair, fresh mint and sharing a single hinge remainder; very fine and a rare multiple. Photo £800-1,000

PROVENANCE:
Derek Lambert, November 1999
Lord Vestey, March 2015

RSC “H”, Black and (bright) turquoise-blue, No Gash printing



199

x199 ○ [26-31] vertical pair sharing good Gwanda double-ring datestamp for 3 October 1917; fine and most attractive. Photo £80-100

RSC “I”, Black and pale blue, No Gash printing



200

x200 ★ [46-48] marginal strip of three with large part imprint, very lightly mounted mint. A unique multiple of this rare printing. Photo £3,500-4,000

PROVENANCE:
Clive Wolpert, April 2000
Lord Vestey, March 2015

Two Shillings

S.G. 153, Black and ultramarine, Long Gash printing



201

x201 ⊕田 [4-10] corner block of four with sheet number “64”, fine unmounted mint. A rare multiple. Photo £2,000-2,500

PROVENANCE:
Clive Wolpert, April 2000
Lord Vestey, March 2015



202



203



204

S.G. 153, variant, Black and deep grey-blue, Long Gash printing

x202 ★ [46] *King's extra curl*, fine mint. Photo £250-300

PROVENANCE:
Paul Sundback

S.G. 154, Black and dull blue, Thick Ear printing

x203 ⊕ [5], brilliant unmounted mint. An exceptional example. Photo £700-800

PROVENANCE:
Dr. Alan Knott-Craig, May 2015

x204 ○ [4] *Queen's cheek and King's temple* flaws, full original gum and cancelled with Victoria double-ring datestamp for January 1916; very fine. Photo £80-100



205



206

- x205 ○ [23-28] vertical pair, [23] major frame re-entry at top, part original gum and cancelled with one complete and several part Peggy Mine datestamps for March 1912. Photo £180-200
- PROVENANCE:
Norman Levin
- x206 ○ [43-48] vertical pair with intense black heads, [43] with large printer's mark at upper left, full original gum and cancelled with complete and part Shagari double-ring datestamps for 4 September 1913; some faults though an attractive multiple. Photo £140-180
- PROVENANCE:
Robert M. Gibbs, October 1987
Norman Levin



207



208



209

S.G. 154, variant, Black and dull blue, Thick Ear printing

- x207 ★ [21], deep black heads and showing more blue in the frame, fresh lightly mounted mint. Fine and rare. Photo £700-800
- PROVENANCE:
"Royal Palm", March 2018

RSC "C", Deep black and blue, No Gash printing

- x208 ★ [23] with second state of the frame plate, fresh and fine mint. Photo £600-700
- Note: It is only in the third state of the frame plate that the top frame re-entry occurs on [23]*
- PROVENANCE:
Paul Sundback

RSC "C", variant ii, Deep black and (greenish) dull blue, No Gash printing

- x209 ★ [16], fresh mint with a single hinge remainder; fine and scarce. Photo £700-800
- PROVENANCE:
Lord Vestey, March 2015

S.G. 154a, Purple-black and ultramarine, Long Gash printing



210

x210 ★

Unplated, showing the startling head plate colour associated with this printing, large part original gum; very fine mint with no more than eight to ten examples that are certifiable. Photo

£2,200-2,500

Note: It is suggested that this shade arose due to some crimson ink getting into the black during the head plate run for a very limited time. At the 2nd. paper wetting for the frames the ink ran but only at the areas of heaviest inking like the King's tunic, heaviest shading above shoulders, etc.. Simultaneously the lovely purple backs, which vary in intensity, were created. This variety was noticed at the time of its issue and catalogued by 1921 or sooner



211

x211 ★

[28], virtual full original gum. A very fine example of this rare stamp. R.P.S. Certificate (2015). Photo

£2,200-2,500

PROVENANCE:
"Tatiana", June 2015

RSC "E", Deep black and light blue, No Gash printing



212



213



214

x212 ○

[21], a lovely light blue shade, neatly cancelled with Registered Bulawayo single-ring datestamp; lovely. Photo

£200-250

x213 ○

[37], variety "3 dots", neatly cancelled with 1913 Umtali double-ring datestamp; fine

£180-200

x214 ○

[42] with printer's mark at upper right, unwashed with part original gum leaving excellent colours, part double-ring datestamp at left. Photo

£200-250

Two Shillings and Sixpence

S.G. 155, Black and lake, Hook printing

The following four stamps are all different from each other



215



216



217



218

- x215 ★ Deep sepia heads and pale dull frame, fine mint. Photo £120-150
- x216 ★ Whitish poorly inked heads and brighter frame, fine mint. Photo £120-150
- x217 ★ “Muddy” sepia heads and viscous frame, large part thick crackly gum. A most unusual stamp. Photo £120-150
- x218 ★ [26] *King’s nose scratch* and button flaw, frame plate flaws below “A” of “RHODESIA” and top right of King’s head; fine mint. Photo £150-200

PROVENANCE:
Paul Sundback

RSC “A”, Brownish red and carmine-red, Hook printing



219

- x219 ★田 [1-7] corner block of four, [2] *Hook in Queen’s ear*, very lightly mounted mint with [2] and [6] unmounted; [1] with a thin spot and small thin in margin. A unique and impressive multiple. Photo £7,000-8,000

PROVENANCE:
David Forgan
Robert M. Gibbs, October 1987
Norman Levin, November 1993
Lord Vestey, March 2015



220

x220 ★ [14], lovely colours and exceptionally pale heads, fine mint. Photo £500-600



221

x221 ○B [12-20] reconstructed block of eight comprising two vertical pairs and two horizontal pairs, [15] *King's eyebrow line*, all cancelled with Insiza Station double-ring datestamps for 4 April 1916; a few minor imperfections though a remarkable multiple of outstanding importance. Memoir 34, pages 95 and 98, 119. Photo £4,000-5,000

PROVENANCE:
 Norman Levin, [12-18]
 "Montgomery", December 2002, [14-20]
 David Pitts, October 2016, [14-20]



222



223

x222 ○ Unplated horizontal pair, both cancelled with part Insiza Station double-ring datestamp for 3 March 1919; fine and a rare multiple. Photo £500-600

x223 ○ Unplated, unwashed and with large part original gum, neatly cancelled with Shagari double-ring datestamp for 6 December 1917. Superb. Photo £300-350

x224 ○ [17-22] vertical pair, [17] with printer's guide dot at upper right for and [22] with "CO" flaw in "COMPANY", neatly cancelled with light double-ring datestamp; a few ragged perfs., otherwise fine and rare. Robert M. Gibbs Certificate (2013). Photo

£600-700

PROVENANCE:
Gerald Simpson, December 1982
Robert H. Gibbs, October 1987



224

S.G. 155a, Black and crimson, Long Gash printing



226



225



227

x225 ★ Unplated horizontal pair with distinctly sepia-tinted heads and dull frame, lightly mounted mint; the left-hand stamp with a few trivial perf. tones, otherwise very fine and the only mint or used multiple of this printing recorded to date. Photo

£400-500

PROVENANCE:
"Royal Palm", March 2018

x226 ★ Unplated with sepia tinted heads; very fine mint. A superb stamp. Photo

£120-150

PROVENANCE:
Paul Sundback

x227 ⊕ Unplated with a bright frame, unmounted mint; very fine. Photo

£150-200

PROVENANCE:
Paul Sundback



228



229



230

x228 ★ [16], lovely and fresh, fine mint. Photo

£120-150

x229 ★ [24] with a reddish frame; fine part original gum. Photo

£120-150

x230 ○ Unplated, neatly cancelled with Bulawayo "D" in barred diamond; extremely rare commercially used with only two examples recorded. Memoir 34, B56, pages 24 and 35. Photo

£600-700

S.G. 155a, variant, Black and crimson, Long Gash printing



231



232



233

- x231 ★ Unplated with a lovely bright frame, under ultra-violet the frames are a deep dull orange, fine mint. Photo £200-250
- x232 ★ Unplated with a lovely bright frame, under ultra-violet the frames are a deep dull orange, fine with part original gum. Photo £200-250
- x233 ★ [15] *King's eyebrow line*, lovely fresh colours, large part original gum, fine. Gibbs Certificate (2013) states "A rare and interesting stamp which in my view should have a separate listing. The frame has far less blue than the normal 155a group and resembles carmine-red. The headplate ink is a brownish black, deeper than sepia, and bears no resemblance to the normal heads of the 155a group". Photo £400-500
- PROVENANCE:
"Royal Palm", March 2018

S.G. 156, Sepia and deep crimson, Long Gash printing



234



235



236



237

- x234 ★ Unplated and well-centred, fine mint. Photo £150-200
- PROVENANCE:
Paul Sundback
- x235 ★ Unplated and quite well-centred, fine mint. Photo £150-200
- PROVENANCE:
Paul Sundback
- x236 ★ Unplated with bright frame and pale underinked heads, well-centred and fine mint. Photo £150-200
- x237 ★ Unplated and showing natural resinous paper inclusion in King's forehead, fresh mint. Photo £120-150



238



239



240

S.G. 156, variant, Sepia and deep crimson, Long Gash printing

- x238 ★ [25], *Lines by King's cheek*, lovely pale frame and “coppery” heads, a variant of the shade, large part original gum; a rare variety printed from the Long Gash 3 Headplate. Gibbs Certificate (2013). Very fine. Photo £400-500

S.G. 156a, Bistre-brown and crimson, Mid Gash printing

- x239 ★ Unplated, brilliant frame, large part original gum; fine. R.P.S. Certificate (1978). Photo £500-600
 PROVENANCE:
 Robert M. Gibbs, October 1987
 Lord Vestey, March 2015

- x240 ★ Unplated, fine with part original gum. Photo £400-500
 PROVENANCE:
 Dr. Alan Knott-Craig, May 2015

RSC “C”, Brown and (aniline) brown-lake, Mid Gash printing



241



242

- x241 ★ Unplated, lovely colours and well-centred, large part original gum. A superb example and one of the most beautiful of all Double Heads. Photo £700-800
- x242 ★ Unplated, excellent colours and with very aniline frame, large part original gum. Fine. Photo £500-600



243



244



245

- x243 ★ [2] *Mid gash in Queen's ear*, fresh colours and with large part original gum; minute thin behind King's forehead. Very fine appearance and extremely rare. Photo £700-800
- x244 ○ Unplated, neatly cancelled with fine near-complete upright strike of a Gatooma double-ring datestamp for 10 January 1920 (Hoyte 13.5). A unique usage of this cancellation on this extremely fine and lovely stamp, and which also exists (see Memoir 27) on two Admirals. Memoir 34, page 81, G17. Photo £700-800
- x245 ○ Unplated, fine used with part datestamp; very rare. Photo £500-600

RSC "D", Blackish brown and brown-lake, Mid Gash printing



246



247

x246 ★ Unprinted with characteristic blackish ink clogging above King's and Queen's left shoulders, large part original gum. Fine and very rare. Photo £1,000-1,200

x247 ★ [36], large part original gum, fine mint and very rare. Photo £700-800

RSC "E", Deep brown and brown-lake, Mid Gash printing



248



249

x248 ★ [50] corner example, lightly mounted mint; shallow thin at corner of margin, the stamp superb. A wonderful example. Photo £1,200-1,500

PROVENANCE:
Robert M. Gibbs, October 1987
Sir Gawaine Baillie, September 2006
Lord Vestey, March 2015

x249 ★ Unprinted, a fresh and well-centred example, large part original gum. Fine and most attractive. Photo £600-700

RSC "E", variant, Deep brown and brown-lake, Mid Gash printing



250



251

x250 ★ Unprinted, paler frame and distinctly much paler reddish brown heads, fine with part original gum. Scarce. Photo £600-700

x251 ★ Unprinted with distinct red-brown heads, fine mint. Scarce and attractive. Photo £600-700

S.G. 157, Black and rose-carmine, Long Gash printing



252



253



254



255

- x252 ★ Unplated, fine with large part original gum. Photo £150-200
- x253 ★ Unplated, an intermediate shade between S.G. 157 and 155a, fine with large part original gum. Photo £150-200
- x254 ★ Unplated and in pale shades, fine mint. Photo £150-200
- x255 ★ Unplated, an intermediate shade between S.G. 157 and 155a and showing guide dot at lower right corner, fine mint. Photo £150-200

RSC “F”, Blackish brown and rose-red, Long Gash printing



256



257



258



259

- x256 ★ [15] *King’s eyebrow line* from the Long Gash 1 Headplate, large part original gum and very attractive. The true “F”, extremely rare with only three examples recorded. Robert M. Gibbs Certificate (2013). Photo £700-800
- x257 ★ [46] *King’s extra curl*, rich colours, part original gum. A very rare and an almost certainly unique stamp. Photo £700-800
 PROVENANCE:
 Lord Vestey, March 2015
- x258 ★ Unplated with a pale frame, well-centred and with large part original gum; fine. Photo £400-500
- x259 ★ Unplated and with lovely sepia/agate heads, fresh with large part original gum. Most attractive. Photo £600-700



260



261

- x260 △ Unplated, neatly cancelled and tied on small piece with near-complete Odzi double-ring datestamp (O1) for 30 December 1910; a very fine and rare commercial usage of this stamp. Photo £400-500
 PROVENANCE:
 Norman Levin
- x261 ○ Unplated, twice cancelled with “κ” in barred diamond; washed though the only known example of this cancellation on a Double Head and unlisted in Memoir 34. Photo £500-600

RSC “G”, Brownish black and carmine vermillion, Long Gash printing



262

x262 ★ [33], exceptionally well-centred and lightly mounted mint; two natural inclusions. The finest of the three examples in the Robert M. Gibbs collection and a great rarity, being one of only four or five known, not all fine. Photo £1,500-1,800

PROVENANCE:
Robert M. Gibbs, October 1987
Lord Vestey, March 2015

Unlisted Long Gash Printings



263



264



265

x263 ★ [2] *Long Gash in Queen's ear*, sepia-black and deep rose-red, large part original gum, fine and very rare. Robert M. Gibbs Certificate (2013) states that this stamp bears no resemblance to any of the other Long Gash printings. Photo £800-1,000

PROVENANCE:
“Royal Palm”, March 2018

x264 ★ [15] *King's eyebrow line*, silver-black and (deep frame) carmine-red, large part original gum; fine and with a very distinct appearance not resembling any other Long Gash 2/6d. Photo £500-600

x265 ★ Unplated, blackish sepia and scarlet, large part original gum; fine. Robert M. Gibbs Certificate (2013) states this stamp bears no resemblance to any of the Long Gash Headplates. Photo £600-700

PROVENANCE:
David Zaayer, October 1998



266



267



268

x266 ★ Unplated, deep bright frame unlike S.G. 155a, and under ultra-violet it glows deep, dull orange, fine with part original gum. Photo £400-500

x267 ★ Unplated, deep bright scarlet frame and under ultra-violet it glows intense vivid orange, large part original gum; fine. Photo £400-500

x268 ★ Unplated, deep bright scarlet frame with a slightly paler shade than the previous stamp and under ultra-violet it glows deep, dull yellow-orange, large part original gum; fine. Photo £400-500

Three Shillings

S.G. 158, Green and violet, Long Gash printing

x269 ★ Unplated (2), in very different shades, one [21], large part original gum; fine £120-150



270



271

x270 ○ Unplated, commercially used with Wankies double-ring datestamp for 21 October 1911; fine and rare. Memoir 34, page 207, W1. Photo £120-150

PROVENANCE:
Norman Levin

x271 ○ Unplated, commercially used with Veracity Mine double-ring datestamp for 22 November 1910; fine and rare. Memoir 34, page 195, V1. Photo £120-150

PROVENANCE:
Norman Levin

S.G. 158a, Bright green and magenta, Short Gash printing



272

x272 ★田 [1-7] corner block of four, [2] *Short gash in Queen's ear*, fresh colours with a lovely delicate frame shade and with large part original gum; several stains at tip of perforations at right and at top of upper margin though of generally fine appearance and very attractive. The unique block and a hugely important multiple of this lovely stamp. Photo £4,000-5,000

PROVENANCE:
"County", November 2003



273

x273 ★

[5] with “medal” cuts, part original gum. A fine and most attractive example of this scarce stamp. Robert M. Gibbs Certificate (2013) states “Both head and frame shades are paler and brighter than normal, resembling an intermediate shade between 158a and RSC “C”. Photo

£500-600

PROVENANCE:
“Royal Palm”, March 2018

RSC “A”, Deep bluish green and deep purple, Long Gash printing



274

x274 ★田

[9-15] block of four, [15] *King’s eyebrow line*, a row of blind perfs. at foot, fresh with large part original gum. A fine and rare block of which only about four have been recorded. Photo

£2,500-3,000

PROVENANCE:
“Dubois”, March 2020



275



276

x275 ★

[26] with “button” flaw, etc., fine mint. Photo

£120-150

PROVENANCE:
Paul Sundback

x276 ★

[46] *King’s extra curl*, a large and well-centred example, fine mint. Photo

£150-200



277

x277 ◻

Unplated block of four, both vertical pairs neatly cancelled-to-order with Salisbury double-ring datestamp for 17 July 1911. A fine and rare multiple. Photo

£700-800



278

x278 △

Unplated (2) with 2/- black and ultramarine, each neatly cancelled-to-order with Bulawayo datestamp for 22 December 1913 on Public Service piece. Fine and unique, being the latest cancellation on the 3/- value as VR though remarkably not listed on the 2/- value. Photo

£400-500

PROVENANCE:
Norman Levin

RSC "B", Deep bluish green and deep reddish violet, Long Gash printing



279

- x279 ★ Unplated, exceptional colours and well-centred, fresh with large part original gum. A great rarity being the finer of the two recorded examples to date. Robert M. Gibbs Certificate (2003 without photo), stating that the stamp is "A great rarity, distinguished by its extraordinary intense frame shade". Photo £6,000-8,000
- PROVENANCE:
 Clive Wolpert, April 2000
 "Montgomery", December 2002
 Sir Gawaine Baillie, September 2006
 Lord Vestey, March 2015

RSC "C", Bright green and dull claret. Short Gash printing



280

- x280 ★ Unplated, fresh with part original gum. Fine and rare. Photo £700-800
- PROVENANCE:
 Dr. Alan Knott-Craig, May 2015

RSC "D", Bright green and deep purple. Short Gash printing



281



282



283

- x281 ★ [2] *Short gash in Queen's ear*, pale frame colour, large part original gum; trivial gum loss. A rare stamp. Photo £600-700
- x282 ★ [15] *Extra line over King's eyebrow* and "medal" cuts, unused with large part original gum, fine and rare. Robert M. Gibbs Certificate (2013). Photo £700-800
- x283 ★ Unplated, a large and well-centred example, fine with part original gum. Photo £500-600

Five Shillings

S.G. 159, Vermilion and deep green, Long Gash printing



284

x284 ★

[2] *Long gash in Queen's ear*, good centering, large part original gum, most attractive. Rare. Photo

£350-400



285

x285 ★田

[39-45] marginal block of four, [44] *King's wisp*, pristine mint with only [39] exhibiting very small hinge mark; trace of three diagonal strips in gum, possibly from backing paper. A wonderful and unique multiple. B.P.A. Certificate (2007). Photo

£3,500-4,000

PROVENANCE:
Oswald Marsh
Robert M. Gibbs, October 1987
Norman Levin
Lord Vestey, March 2015



286

x286 ○

Unplated, neatly cancelled-to-order with part Gwelo double-ring datestamp for 6 May (1913); fine and the only recorded example on this stamp. Photo

£250-300

PROVENANCE:
"Montgomery", December 2002

RSC “A”, (Deeper) brown-red and green, Long Gash printing



287



288



289

x287 ★ [2] *Long gash in Queen’s ear*, large part original gum, fine and rare, being missing from the Gibbs 1987 sale. Photo £500-600

PROVENANCE:
Clive Wolpert, April 2000
Lord Vestey, March 2015

x288 ★ [25] *Lines by King’s cheek*, part original gum, fine and rare, being missing from the Gibbs 1987 sale. Photo £300-350

PROVENANCE:
“Montgomery”, December 2002
Lord Vestey, March 2015

x289 ★ [26] “King’s nose and button” flaws, fine with large part original gum. Photo £180-200



290



291



292

x290 ★ Unplated, lovely colours, large part original gum. Superb. Photo £180-200

x291 ★ Unplated, well-centred and very fine mint. Photo £180-200

x292 ○ Unplated, commercially used with partially indistinct Salisbury double-ring datestamp for 11 January 1911; some shortish perfs. at right otherwise fine and very rare. Photo £200-250



293



294

RSC “A”, variant, (Deeper) brown-red and green, Long Gash printing

x293 ★ [22], looking like an “A” though heads do not fluoresce, fine mint. A most unusual stamp. Photo £180-200

RSC “B”, (Deeper) Indian-red and green, Long Gash printing

x294 ★ [23], the “true” Indian red with the ink being fugitive, fresh and brilliant colours, large part original gum and very fine. Exquisite and the rarest of all listed 5/- stamps. Photo £1,500-2,000

RSC "C", (Deeper) Scarlet-vermilion and deep green, Long Gash printing



295



296



297



298

- x295 ★ [2] *Long gash in Queen's ear*, fine mint and rare. Photo £300-350
 PROVENANCE:
 Paul Sundback
- x296 ★ [2] *Long gash in Queen's ear*, fine mint and rare. Photo £300-350
- x297 ★ [3], frame re-entry at right edge of left-hand value tablet, large part original gum; fine. R.P.S. Certificate (1967). Photo £220-250
 PROVENANCE:
 S.D. Cramer
- x298 ★ [15] *King's eyebrow line*, lovely colours, fine with part original gum. Photo £250-300

RSC "C", variant, (Deeper) Scarlet-vermilion and deep green, Long Gash printing



299



300

- x299 ★ Unplated, deeper frame, pale heads, fine mint. Photo £300-350
- x300 ★ Unplated, deeper green frame, fine mint. Photo £300-350
 PROVENANCE:
 Robert M. Gibbs, October 1987
 Lord Vestey, March 2015

RSC "D", Deep rose-red and deep green, Long Gash printing



301

- x301 ★ [19] "bruising" on King's head, part original gum, both heads and frame non-reactive to ultra-violet; small thin. A most attractive stamp. Photo £300-350
 PROVENANCE:
 Robert M. Gibbs, October 1987
 Lord Vestey, March 2015

Unlisted Long Gash printings. All frames are non reactive to ultra-violet



302



303



304



305

- x302 ★ [2] *Gash in Queen's ear*, (brighter) brown-red and deep green, mint; a superb shade. An extraordinary and unique item. Photo £800-1,000
Note: The entire stamp is completely non-reactive to ultra-violet
 PROVENANCE:
 Sir Gawaine Baillie, September 2006
- x303 ★ [15] *King's eyebrow line*, brown-red and green with bright "coppery" heads under ultra-violet, fine mint. Photo £350-400
- x304 ★ [46] *King's extra curl*, brown-red and deep green with dull "coppery" heads under ultra-violet, mint with a hinge remainder at top. Photo £250-300
 PROVENANCE:
 Norman Levin
 Lord Vestey, March 2015
- x305 ★ [50], (deeper) brown-red and deep green, distinctive "coppery" heads under ultra-violet, fine mint. Photo £350-400



306



307



308

- x306 ★ Unplated, brown-red and deep green with slight "coppery" tinge to heads under ultra-violet, fine mint. Photo £350-400
- x307 ★ Unplated, (paler) lake-brown and deep green with "coppery" heads under ultra-violet, fine mint. Photo £350-400
- x308 ★ Unplated, (brighter) brown-red and deep green, fine mint. Photo £350-400



309

- x309 ★ Unplated, brownish scarlet and deep green, the frame colour in an extraordinary colour unlike any other members of the five shilling family, the heads reacting "bright coppery orange" under ultra-violet, a large and well-centred example, part original gum with a single hinge remainder; highly attractive and a quite amazing stamp. Photo £1,200-1,400
 PROVENANCE:
 "Royal Palm", March 2018



310

x310 △

Unplated, (deeper) Indian red and (deeper) green, neatly tied on small piece by a complete Odzi double-ring datestamp for 30 December 1910. An extremely rare commercial usage. Memoir 34, page 133, O1. Photo

£500-600

PROVENANCE:
Norman Levin

S.G. 160, Scarlet and pale yellow-green, Short Gash printing



311



312

x311 ★

[4] *Queen's cheek* flaw and scratch through "SIA" and right-hand frame, large part original gum; fine. Photo

£250-300

PROVENANCE:
Robert M. Gibbs, October 1987

x312 ★

[7], flaw at top of "AN", lovely frame and well-centred, large part original gum and very fine. Photo

£250-300

PROVENANCE:
Sir Gawaine Baillie, September 2006



313

x313 ◻

[1-7] corner block of four, [2] *Short gash in Queen's ear*, almost full original gum and both vertical pairs cancelled-to-order with superb Gwelo double-ring datestamps for 6 May 1913. Lovely. Photo

£1,000-1,200

RSC "E", Deep rose-red and (brighter) yellow-green, Short Gash printing



314

x314 ⊕田

[1-7] corner block of four, [2] *Short gash in Queen's ear*, fresh unmounted mint. A very rare and impressive multiple. B.P.A. Certificate (2007) states "part original gum" which is inaccurate as the flatish strip of gum that is present is characteristic of this printing. Photo

£7,000-8,000

PROVENANCE:
Norman Levin
Lord Vestey, March 2015



315

x315 ○

[1-2] corner pair, [2] *Short gash in Queen's ear*, full original gum and each neatly cancelled-to-order with part Bulawayo double-ring datestamp for 22 August (1911). A fine and attractive multiple. Photo

£2,000-2,500

PROVENANCE:
John H. Sinton, December 1955
David Forgan
Robert M. Gibbs, October 1987
Thomas S. Osdene, May 2001
David Pitts, October 2016

x316 ★

[16], marginal, very fine mint. Photo

£200-250



316



317

- x317 ○ A vertical pair with incredibly blotchy frame, most noticeable in right-hand value tablets, fiscally used with “25/9/11” dated perfins and sharing “LOMAGUNDI” oval datestamp in violet for 26 September. A rare fiscal usage. Photo £250-300

S.G. 160a, Crimson and pale yellow-green, Long Gash printing

- x318 ★ [1-2] corner pair, [2] *Long gash in Queen’s ear*, hinge remainders at top with traces on face of margin, the stamps remaining superb unmounted mint. Fine and scarce. Photo £2,000-2,500



318

PROVENANCE:
Norman Levin
Lord Vestey, March 2015

- x319 ★ [23], fine mint. Photo £100-150



319



320



321

- x320 ★ Unplated, fine mint. Photo £100-150

- x321 ○ Unplated with printer’s guide dot at upper right corner, fugitive heads, neatly cancelled-to-order with part Bulawayo datestamp for 22 August (1911); fine. Photo £80-120

RSC “F”, Deep rose-red and dull yellow-green, Long Gash printing

x322 ★ [15] *King's eyebrow line* and with a row of blind row of perfs. at foot, lightly mounted mint and very fine. Rare. Photo £500-600



322



323



324

PROVENANCE:
Robert M. Gibbs, October 1987
"Dallas", July 1990
Lord Vestey, March 2015

x323 ★ Unplated lower right corner example, very deep poorly inked heads, large part original gum, fresh and very fine, being an extreme variant of 160a. Rare and highly attractive. Photo £600-700

PROVENANCE:
"Besançon", September 2020

x324 ★ Unplated, fresh with large part original gum. Rare. Photo £500-600

PROVENANCE:
Paul Sundback

Seven Shillings and Sixpence

S.G. 160b, Carmine and pale blue, Long Gash printing

x325 ★ Unplated, well-centred, hinge remnant at top, fresh mint. Superb. Photo £350-400



325



326



327

x326 ★ Unplated, very fine mint. A lovely example. Photo £350-400

x327 ★ Unplated, a variant with frame bluer and brighter, heads under ultra-violet are extremely pale and ghostly, fine mint. A gorgeous example. Photo £400-500

RSC "A", Carmine and bright blue, Long Gash printing

x328 ★ [28], fine mint. Photo £400-500



328



329

x329 ★ Unplated, a large and extremely well-centred example, large part original gum. Exquisite. Photo £700-800

RSC “A”, variant, Carmine and bright blue, Long Gash printing

x330 ★ [21], lovely brighter deep frame, fine mint. Photo £600-700



330

PROVENANCE:
Robert M. Gibbs, October 1987
Sir Gawaine Baillie, September 2006
Dr. Alan Knott-Craig, May 2015

RSC “B”, Carmine and deep dull blue, Long Gash printing

x331 ★ [35], fine mint. Rare and most attractive. R.P.S. Certificate (1977) as S.G 162. Photo £1,000-1,200



331



332

PROVENANCE:
Robert M. Gibbs, October 1987
Sir Gawaine Baillie, September 2006
Dr. Alan Knott-Craig, May 2015

x332 ★ Unplated, the “true” shade in gorgeous exquisite colours, fine mint. A truly lovely stamp and the only example known to the owner. Photo £1,000-1,200

RSC “C”, Deep rose-red and (bright) grey-blue, Hook printing

A Magnificent and Exquisite Showpiece



333

x333 ★ ㊦

[2-10] corner block of eight with full imprint and sheet number “13”, [2] *Hook (faint) in Queen’s ear*, [5] *line above King’s head*, [5] and [10] with “medal” cuts and [7] with mark in “M” of “COMPANY”, a couple of hinge remainders in margins though with stamps remaining unmounted. A magnificent and exquisite showpiece multiple of great beauty. B.P.A. Certificate (2007). Photo

£18,000-20,000

Note: This magnificent block was purchased by Gerald Simpson out of his naval gratuity at auction in 1946 for the sum of 6 guineas

PROVENANCE:
 Gerald Simpson, December 1982
 John Barbour
 Norman Levin
 Lord Vestey, March 2015



334



335



336



337

- x334 ★ [40] “medal” cut, fine mint. Most attractive. Photo £350-400
 PROVENANCE:
 Paul Sundback
- x335 ★ [43], large part original gum; fine and highly attractive. Photo £350-400
- x336 ★ Unplated, well-centred, fine mint. Photo £350-400
 PROVENANCE:
 Paul Sundback
- x337 ★ Unplated, head plate flaw in left end of “RHODESIA” panel, fresh mint and very fine. Photo £400-500

RSC “C”, variant i, Deep rose-red and cobalt, Hook printing



338

- x338 ★ Unplated, deeper heads, large part original gum; fine and most attractive. Photo £350-400

S.G. 161, Carmine and light blue, Long Gash printing



339

- x339 ★ Unplated, pale frame, mint and very fine. Photo £350-400

S.G. 161, variant i, Bright carmine and deep turquoise-blue, Long Gash printing



340

- x340 ★ [15] *King’s eyebrow line*” with intermediate frame, fresh mint. Superb. Photo £350-400

S.G. 161, variant ii, Carmine-vermilion and deep turquoise-blue, Long Gash printing



341

x341 ★ Unplated, deep rich frame, fine with part original gum and scarce. Photo £400-500

RSC "D", Deep rose-red and (brighter, greenish) deep dull blue, Mid Gash printing



342



344



343

x342 ★ [9], large part original gum; sound. Rare. Photo £800-1,000

x343 ★ [32], frame flaw under "OD" of "RHODESIA", mint with small part hinge remainder; lovely. Photo £800-1,000

PROVENANCE:

Robert M. Gibbs, October 1987

Sir Gawaine Baillie, September 2006

In both the above sales this stamp was described as an example of S.G. 162

x344 ◻ [31-37] block of four, both vertical pairs neatly cancelled-to-order with double-ring Bulawayo datestamp for 3 December 1912; a rare and beautiful multiple. Photo £1,200-1,500

RSC "E", Scarlet and (deep bright) blue, Mid Gash printing



345

x345 ★ [2] *Mid gash in Queen's ear*, variant with (bluish) dull blue frame, large part original gum, fine; very rare and almost certainly unique. Photo £5,000-6,000

A Great Rarity and Beautiful Multiple



346

x346 ★田

[18-24] block of four, variant, scarlet and (paler and brighter) chalky blue, outstanding rich colours and perfect centering, large part original gum with the lower pair remaining unmounted. A great rarity and a beautiful and outstanding multiple. An astonishing new discovery, hitherto unrecorded. The only recorded mint block of four from all these later printings. Photo

£15,000-18,000

Note: The more richly hued later printings of the 7/6d. emanate from the Mid Gash Plate (RSC "D" and "E") and the Short Gash Plate (S.G. 162, RSC "F" and "G")

PROVENANCE:

"Besançon", September 2020



347

- x347 ○ Unplated, commercially used with Kawambwa double-ring datestamp for 14 July 1921; fine and very rare on this high value. Memoir 34, pages 235, 245, K33. Photo £500-600
- PROVENANCE:
Norman Levin

S.G. 162, Carmine and bright blue, Short Gash printing



348



349

- x348 ★ [2] *Short gash in Queen's car* and with lovely intense frame, fine mint and an attractive example of this rare stamp. Photo £4,000-5,000
- PROVENANCE:
Paul Sundback

- x349 ★ Unplated, well-centred, fine mint. Superb. Photo £2,500-3,000



350



351

- x350 田 [24-30] block of four with full original gum and lovely offset on reverse, each vertical pair cancelled-to-order with Gwelo double-ring datestamp for 22 February 1912. This is the only recorded block of this stamp, mint or used. Superb and beautiful. Photo £3,500-4,000
- PROVENANCE:
Norman Levin
"Apollonia", October 2007
"Tatiana", June 2015

- x351 ○ [13-18] vertical pair, commercially used with Victoria double-ring datestamps for 4 June 1917. Very rare. Photo £700-800
- PROVENANCE:
Norman Levin

RSC "G", Carmine-red and deep violet-blue, Short Gash printing



352

x352 ★

[2] *Short gash in Queen's ear*, marginal with small part imprint, hinge remainders in margin, the stamp itself very lightly mounted; small colour smear at upper left with a trace of a tone mark in adjacent margin, not in anyway affecting the stamp which is very fine. A rare stamp. Photo

£3,000-4,000

PROVENANCE:
Derek Lambert, November 1999
Lord Vestey, March 2015



353

x353 ○

Unplated, intense colours, neatly cancelled and commercially used with Victoria double-ring datestamp for 6 August 1917; fine and very rare. Memoir 34, pages 195 and 199, V17. Photo

£800-1,000

PROVENANCE:
Norman Levin

Unlisted Printing, Deep rose-red and deep grey-blue, Short Gash printing



354

x354 ★

[33], large part original gum; originally offered as an S.G.162 and now recognised as an unlisted printing. Lovely. R.P.S. Certificate (2005). Photo

£1,800-2,000

PROVENANCE:
Robert M. Gibbs, October 1987
Dr. Alan Knott-Craig, May 205

Ten Shillings



355



356



357



358

S.G. 163, Deep myrtle and orange, Hook printing

x355 ★ [49], fine mint. Photo £250-300

PROVENANCE:
Sir Gawaine Baillie, September 2006

x356 ★ [50] “bottom row cut” (a small vertical mark approximately 5mm. to the left of the Queen’s earlobe), rich headplate colour, fresh mint. Robert M. Gibbs Certificate (2010). Photo £200-250

S.G. 163, variant i, Greenish black and reddish orange, Hook printing

x357 ★ [50] “bottom row cut” (a small vertical mark approximately 5mm. to the left of the Queen’s earlobe), rich headplate colour, fresh mint. Photo £400-500

PROVENANCE:
Robert M. Gibbs, October 1987

RSC “A”, (Bluish) olive-black and (pinkish) red-orange, Hook printing

x358 ★ [20] with “medal” cuts, pale bright frame, fine with part original gum. Photo £400-500

PROVENANCE:
Sir Gawaine Baillie, September 2006 when offered as an S.G. 163



359



360



361

RSC “B”, Blackish green and red-orange, Mid Gash printing

x359 ★ [2] *Mid gash in Queen’s ear*, large part original gum; fine and very scarce. Photo £800-1,000

PROVENANCE:
Bryant Rose, March 1995
Lord Vestey, March 2015

RSC “C”, Slate-green and red-orange, Mid Gash printing

x360 ★ [4] “Queen’s cheek” flaw, fine with part original gum. Photo £500-600

x361 ○ Unplated, neatly cancelled with double-ring “RECORD BRANCH G.P.O./LIVINGSTONE” datestamp for 5 August 1914? A great rarity with a combination of this printing and a very rare postmark of which only three examples are recorded. Memoir 34, page 246, 254. Photo £500-600

S.G. 164, Blue-green and orange, Long Gash printing



362

x362 ★

[1-2] corner pair, [2] *Long gash in Queen's ear*, fresh mint with the stamps lightly mounted; [1] with a small thin at lower left corner though of very fine appearance. A unique positional multiple. Photo

£3,200-3,500

PROVENANCE:
 Norman Levin
 "Apollonia", October 2007
 Alan Uria, July 2012
 David Carson, July 2016



363

x363 ★田

[33-39] block of four, fresh lightly mounted mint. Exceptionally fine. B.P.A. Certificate (2007). Photo

This and the corner pair offered above are the only mint multiples of S.G. 164 recorded. If one takes into account all the eighteen duties of this beautiful issue this block is the rarest as it is the only 10/- block recorded for the entire duty other than the clandestine roulettes, therefore if a collector wanted a straight set of blocks this block would have to be purchased

£6,000-8,000

PROVENANCE:
 Robert M. Gibbs, October 1987
 Norman Levin
 Lord Vestey, March 2015



364



365



366

- x364 ★ [25] *Lines by King's cheek*, fine mint. Photo £250-300
- x365 ★ Unplated, vertical frame plate flaw through "r" of "RHODESIA", fine with part original gum. Photo £250-300
- x366 ○ [15] *King's eyebrow line*, commercially cancelled with superb Odzi double-ring datestamp for 30 December 1910. Rare and very fine. Photo £350-400

PROVENANCE:
Norman Levin

S.G. 164, variant, Deep slate-green and (deep) orange (towards Indian red), Long Gash printing



367



368

- x367 ★ Unplated, aniline heads, fine with large part original gum. Photo £300-350
- x368 ★ Unplated, aniline heads and well-centred, fine mint. Photo £300-350

One Pound

S.G. 165, Carmine-red and bluish black, Long Gash printing



369



370



371

- x369 ★ [2] *Long gash in Queen's ear*, fresh and very lightly mounted mint. An outstanding stamp that would be near impossible to improve upon. Photo £2,500-3,000
- PROVENANCE:
Alan Uria, July 2012
- x370 ★ Unplated, from the S.G. 165 family with rose-carmine heads and pale (purplish) frame, fine mint. Photo £800-1,000
- x371 ★ Unplated, from the S.G. 165 family with deep carmine-red heads and deep bluish black frame, fine mint. Photo £800-1,000

RSC "A", Carmine-vermilion and (paler) blue-black, Long Gash printing



372

x372 ⊕

[1] corner example, **unmounted mint**; a superb example of this rare printing. Photo

£1,800-2,000



373

x373 ★

[50], an absolutely huge and extremely well-centred example with pale heads, large part original gum; negligible wrinkle which in no way detracts from this remarkable stamp. An exquisite and delightful example of this rare stamp which would be impossible to equal. Joy and exuberance. Photo

£1,800-2,000

PROVENANCE:
"Besançon", September 2020



374

x374 △

Unplated and with pale heads, tied by "USED" perfin and oval-framed "MINES OFFICE/GWELO" on fiscal piece dated 2 September 1911; highly attractive. Photo

£150-200

S.G. 166, Rose-scarlet and bluish black, Mid Gash printing

A Rare and Superb Multiple



375

x375 ★田

[16-22] marginal block of four, very lightly mounted mint, the left-hand vertical pair remaining unmounted. A very rare, superb and lovely multiple. B.P.A. Certificate (2007).
Photo

£12,000-14,000

PROVENANCE:
Oswald Marsh
Robert M. Gibbs, October 1987
Norman Levin
Lord Vestey, March 2015



376

x376 ★ Unplated and with deeper head and frame shades than the block of four offered above, fine mint. Photo £800-1,000

S.G. 166, variant, Carmine-red and (blackish) indigo, Mid Gash printing



377



378

x377 ⊕ [2] *Mid gash in Queen's ear*, much blacker frame and the heads and deeper than the normal S.G. 166, superb unmounted mint and as [2], probably unique. Photo £2,500-3,000

PROVENANCE:
Paul Sundback

x378 ★ [38] with frame plate mark in the lower left which is a flaw and not a printer's mark, large part original gum; fine and rare. Photo £1,000-1,200

PROVENANCE:
Clive Wolpert, April 2000
Lord Vestey, March 205

S.G. 166a, Crimson and slate-black, Long Gash printing



379



380



381

x379 ★ [12] with printer's guide dot at lower right corner, deep shades getting close to RSC "D", fine mint. Photo £800-1,000

x380 ★ [25] *Lines by King's cheek*, fresh colours and lightly mounted mint. B.P.A. Certificate (2007) states that the stamp has a pinhole though this is now believed to be a small translucent resinous inclusion in the gum, caused by the poor paper used by Waterlow's in the printing of these stamps. Photo £800-1,000

PROVENANCE:
Lord Vestey, March 2015

x381 ★ [46] *King's extra curl*, lovely deep rich colours, well-centred, part original gum. A most attractive example of this rare stamp. Photo £1,000-1,200

PROVENANCE:
"Besançon", September 2000

Unlisted, Deep carmine and blue-black, Long Gash printing



382

x382 ⊕

[25/30/35] vertical strip of three, [25] *Lines by King's cheek*, well-centred and exceptional colours close to S.G. Colour Guide "lake and slate-blue", unmounted mint. Superb and the unique multiple of this rare printing. Photo

£10,000-12,000

PROVENANCE:

Harmers, October 1986

Sir Gawaine Baillie, September 2006 when a strip of four containing [40]

David Barton, March 2009

"Lionheart", July 2016

RSC "B", Deep carmine and blue-black, Long Gash printing



383

x383 ★

[28] large part original gum, fine and a great rarity. Photo

£2,500-3,000

PROVENANCE:

Robert M. Gibbs, October 1987

Lord Vestey, March 2015

RSC "C", variant, (Brownish) lake and (greenish) grey-black, Long Gash printing



384

x384 ★

[2] *Long gash in Queen's ear*, extraordinary pale frame colour, heads paler and brighter than a normal "C" and more like a carmine-red, mint and very fine. An extraordinary unlisted printing. Photo

£3,000-3,500

PROVENANCE:
Norman Levin
Lord Vestey, March 2015

RSC "D", (Deep) brown-lake and blue-black, Long Gash printing



385

x385 ★

[31] with frame plate flaws at foot, intense colours with deep frame, large part original gum, most attractive. Superb. Photo

£1,000-1,200

PROVENANCE:
Lord Vestey, March 2015



386

x386 ★

[38], rich colours and with large part original gum. Superb. Photo

£1,000-1,200

PROVENANCE:
Sir Gawaine Baillie, September 2006
Lord Vestey, March 2015

RSC “E”, (Bright) carmine and (greenish blue) slate, Long Gash printing



387

x387 ★ [4-5] corner pair with sheet number “1”, lovely fresh colours and with large part original gum. An outstanding and brilliant positional multiple, and believed to be almost certainly the only recorded multiple of RSC “E”. Photo

£4,000-4,500

PROVENANCE:
Spink, October 2017



388

x388 ★ [15] *King’s eyebrow line* with lovely “twisted entry” at south west corner of frame, lovely colours and with large part original gum; fine and rare. Photo

£1,200-1,500

RSC “E”, variant, Deep carmine-red and (aniline bluish) blue-black, Long Gash printing



389

x389 ★ [2] *Gash in Queen’s ear*, bluish frame noticeable on reverse, large part original gum; very fine, extremely rare and almost certainly unique. Photo

£2,000-2,500

PROVENANCE:
Robert M. Gibbs, October 1987
Lord Vestey, March 2015

RSC "F", Lake-brown and pale slate-black, Hook printing



390

x390 Δ

[2] Hook in Queen's car, [7-8] with printer's mark and [12], together with 1902 3/- violet, all cancelled by "10 9 12" perfins and tied by "THE MASTER OF THE HIGH COURT/SALISBURY/SOUTHERN RHODESIA" oval datestamp for 10 October 1921 on Inventory for Immovable Property document. Fine and rare. Photo

£600-700

RSC "F", variant, Red-brown and (deep) greenish slate, the so-called "Venetians", Hook printing



391

x391 ★

[41], marginal, wonderful colours, very lightly mounted mint. An extremely fine and exquisite stamp. Photo

£1,800-2,000

PROVENANCE:
Robert M. Gibbs, October 1987
Lord Vestey, March 2015

RSC “G”, variant, (Deep) scarlet and (dark) greenish slate, the so-called “Scarlets”, Hook printing



392



393

- x392 ★ Unplated, deep scarlet heads, lightly mounted mint. During the printing of the headplate a wood chip inclusion was dislodged to the right of the Queen’s head and the resulting vacant space was subsequently overprinted by the frame plate ink. A superb example of this rare shade. Photo £2,000-2,500

PROVENANCE:
Spink, July 2009
Lord Vestey, March 2015

- x393 ○ [30], frame plate flaw on right-hand value tablet, neatly cancelled with large part Selukwe double-ring datestamp for 19 April 1919; a fine and very rare commercial usage of this rare high value. Memoir 34, pages 148, 162, S50. Photo £800-1,000

PROVENANCE:
Norman Levin

RSC “H”, Scarlet and (aniline indigo) blue-black, Short Gash printing



394



395

- x394 ★ [4] *Queen’s cheek* flaw, large part original gum; superb and very rare. Photo £2,500-3,000

PROVENANCE:
Robert M. Gibbs, October 1987
Sir Gawaine Baillie, September 2006

- x395 ○ Unplated and cancelled with near-complete and small part strikes of a Kasama double-ring datestamp with dots for 9 August 1919; repaired lower right corner. The only example of this cancellation on a Double Head. Hoyte 11z. Memoir 34, pages 235, 244, K26. Photo £600-700

RSC “J”, variant, Deep rose-red and grey-black, Short Gash printing

- x396 ⊕ [5] “medal” cuts, marginal with the frame showing through to the reverse due to the very thin paper this stamp is printed upon; small tone mark between one perforation and the margin at upper left, otherwise very fine and unmounted mint. Two examples recorded to date. Photo £1,800-2,000



396

S.G. 166b, Error, Scarlet and reddish mauve, Long Gash printing

An Outstanding Example of this Rare Error



397

x397 ⊕

[5] from the upper right corner of sheet with sheet number "1" and horizontal reddish mauve guillotine mark, wonderful centering and **unmounted mint**; a few split perfs. and very minor tone spots, otherwise very fine. An outstanding example of this rare error. Photo

£10,000-12,000

PROVENANCE:

"Apollonia", October 2007

"Tatiana", June 2015

S.G. 166b, Error, Scarlet and reddish mauve, Long Gash printing

A Monumental Rarity and Great Showpiece Multiple



398

x398 ★

[1-2] corner pair from sheet 2 showing small part of imprint, [2] *Long gash in Queen's ear*, some hinge remnants in the margin, the two stamps sharing a single hinge mark; horizontal crease in the left-hand margin just extending into one stamp, [2] being fine. Fresh and an outstanding multiple of this lovely stamp. A monumental rarity with only one other *Gash in Queen's ear* item known from sheet 1, and a great showpiece of Rhodesian philately. Photo

£28,000-30,000

PROVENANCE:

King Carol of Rumania

The Rt. Hon. The Earl of Winchilsea and Nottingham, October 1946

"County", November 2003

Alan Uria, July 2012

David Carson, July 2016

Perforated 15

Halfpenny

Plate II, RJL 5, Dull blue-green group, Aniline reverse



399



400

- x399 ★ [70], marginal, dot to right of “A” in “RHODESIA”, fine mint. Photo £120-150
- x400 ★ [94], fine mint. Photo £100-120

Plate II, RJL 6, Apple-green



401

- x401 ★田 [59-70] marginal block of four, [69] with flaw on second “A” of “AFRICA”, large part original gum, the lower left stamp remaining unmounted. A fine and rare multiple. R.P.S. Certificate (1964) as yellow-green, this now considered a deep apple variant. Photo £800-1,000

PROVENANCE:
 Cramer
 Norman Levin, November 1993
 Lord Vestey, March 2015



402



403

- x402 ★ [65] with faint bruise to right of King’s epaulette, fine mint. R.P.S. Certificate (1987) as yellow-green. Photo £120-150
- PROVENANCE:
 Paul Sundback
- x403 ★ [70], flaw over “o” of “SOUTH”, part original gum, fine. B.P.A. Certificate (2002). Photo £150-200



404



405

- x404 ★ [98] “breaking wedge”, a large and well-centred example, fine mint. Photo £150-200
- x405 ○ [6], marginal and cancelled with exceptional Victoria Falls double-ring datestamp for 29 April 1913. Superb. Photo £80-100

Plate IV, RJL 12, Deep emerald-green



406

- x406 ★ [12], fresh mint. Superb and extremely rare. Photo £1,200-1,500
- Note: Position 12 is a very useful stamp in illustrating the difference between Plates III and IV. Plate III has the “OU” smash while Plate IV has the inner column flaw*



407

- x407 ○ [83] with amazing blurred impression, especially at top, and massive “double kiss” recutting the left-hand value tablet, cancelled with Bulawayo double-ring datestamp for 2 June 1912; fine and highly unusual. Photo £120-150

Card

- x408 ☒ 1913 (18 July) picture postcard from Victoria Falls (Victoria Falls Bridge) to Colenso, Natal, bearing Plate II, RJL 6 apple-green [3] with top left corner recut and cancelled with double-ring datestamp; fine £100-120

One Penny

S.G. 170, Carmine group



409



410

- x409 ★田 [7-8] block of four, good colour and with large part original gum. A fine and rare multiple. Photo £800-1,000
- x410 ★ [44], good deep colour, fine mint. Scarce. Photo £150-200

S.G. 170a, Carmine-lake group



411

- x411 ★ [92], wonderful rich colour close to bright carmine, fine mint. Extremely rare colour and printing for a perf. 15 stamp. R.P.S. Certificate (2003). Photo £350-400

Rosine Family



412

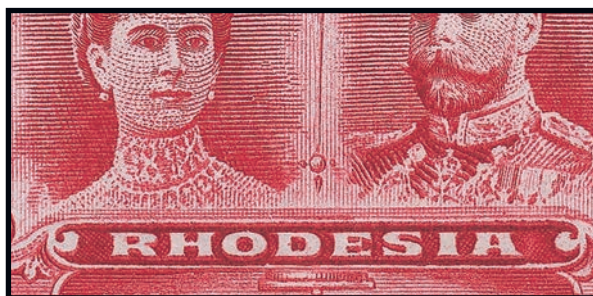


413

- x412 ★ [50], fine mint. Photo £250-300
- x413 ★ [88], well-centred, fine mint. Photo £250-300



414



x414 ★

[91] showing the final state of the “ink squeeze” flaw, [91B], resulting in small “RHODESIA” with this example showing the “squeeze” continue above the Queen’s right shoulder all the way up to her right ear, large part original gum. An exquisite stamp. Photo

£500-600



415



416

x415 ★

[92], a large example, large part original gum; fine. Photo

£250-300

x416 ★

[99], lovely fresh bright colour and fine mint. Photo

£250-300

Covers

x417 ☒

1912 (7 May) envelope ex the *Montgomery Ward* correspondence from Penkridge to Chicago, bearing 1d. carmine-lake Plate A strip of three, [1-3], each cancelled with double-ring datestamp showing blank before day, firm’s arrival datestamp (3.6) towards foot, Umtali transit datestamp (2.5 date error) on reverse. A unique and most attractive franking, these three strikes being the only recorded examples of this postmark with blank before day. Photo

£2,500-3,000

PROVENANCE:

Alan Uria, July 2012

x418 ☒

1912 (Oct.) Rhodesia Railways Ltd. picture postcard (*The Boiling Pot, Victoria Falls*) from Victoria Falls to Ireland, bearing 1d. bright carmine, [15B] *King’s Beard* flaw, cancelled by a superb strike of the “VICTORIA FLS./S. RHODESIA” 26mm. skeleton datestamp with day omitted, the sole recorded example. Memoir 34, V21, page 202. Photo

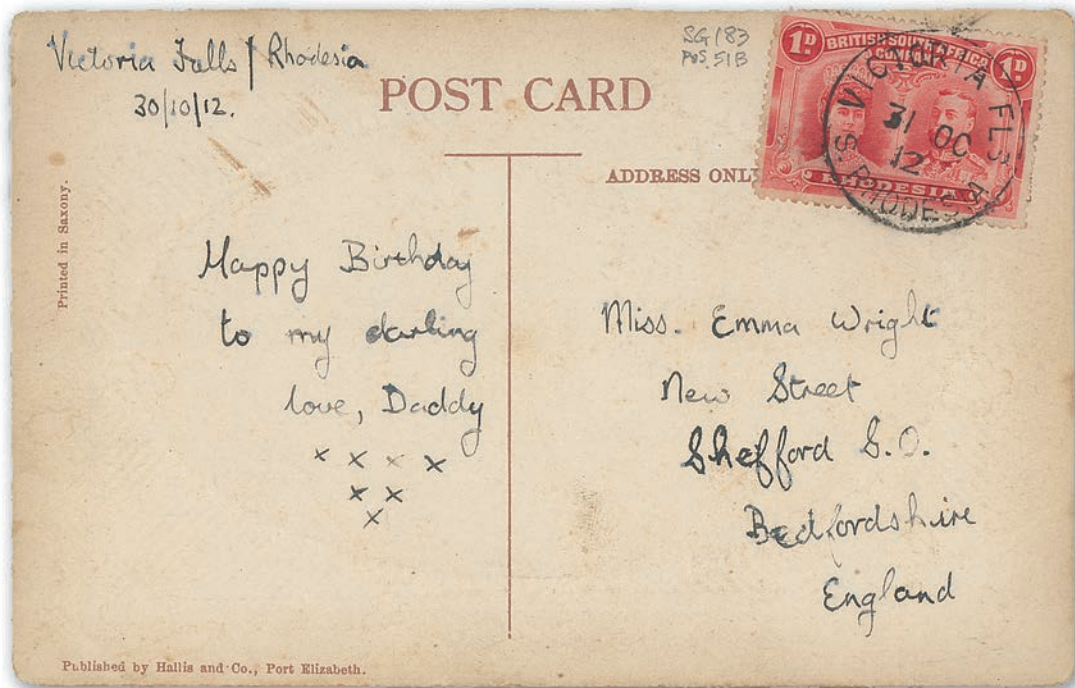
£300-400



417



418



419

- x419 ☒ 1912 (31 Oct.) Hallis & Co. picture postcard (*Rhodes Grave*) from Victoria Falls to England, bearing 1d. bright carmine, [51B] cancelled by a superb strike of the “VICTORIA FLS./S. RHODESIA” 26mm. skeleton datestamp. Fine and rare. Memoir 34, V18, page 201. Photo £800-1,000

PROVENANCE:
Chris Cordes, private sale
- x420 ☒ 1913 (18 Feb.) *Wilson* envelope from Kansanshi to Birmingham, bearing 1d. carmine-lake, marginal from the left of the sheet, neatly cancelled by a fine double-ring datestamp. Rare and lovely. Memoir 34, K18, page 241. Photo £500-600

PROVENANCE:
Paul Buechner
- x421 ☒ 1913 (7 Oct.) envelope, complete with letter, from Livingstone to London, bearing 1d. rose-carmine, [6A] neatly cancelled and tied by double-ring datestamp (L13); the letter contents regarding details of the writers accommodation. Photo £300-400



420



421

Two Pence

RSC "G", Black and grey-black, No Gash printing



422



423

- x422 ★
[33], large part original gum; trace of a thin at hinge area, otherwise fresh and fine. A great rarity being one of only two mint examples known. Photo
£1,200-1,500
- x423 ○
Unplated, large part original gum, excellent colours and cancelled by slightly over-inked Bulawayo double-ring datestamp; fine and rare. Photo
£100-120

RSC "H", Black and slate-green, No Gash printing



424

- x424 ⊕
[16-17] pair, fresh unmounted mint. A very fine and extremely rare multiple of this printing. Photo
£1,200-1,500
- PROVENANCE:
Derek Lambert, November 1999
Lord Vestey, March 2015

RSC "K", Black and slate-black, No Gash printing



425

- x425 ★
[1-2] corner pair with small part imprint, [2] *No gash in Queen's ear*, hinge remainder in top margin, [1] very lightly mounted, [2] unmounted mint; [1] with strong bends though of very fine appearance and an extremely rare positional of this printing. Photo
£1,200-1,400
- PROVENANCE:
Derek Lambert, November 1999
Lord Vestey, March 2015



426



427

- x426 ★ [26], being the final state of the Looker flaw, stunning inking with deep black and deep black, more so than the normal RSC “K”, large part original gum. An outstanding example of this rare stamp. Photo £400-500
- PROVENANCE:
Besançon, September 2020
- x427 ★ Unplated, deep black and deep black, large part original gum; fine and scarce. Photo £350-400

Two Pence Halfpenny

S.G. 172, Deep ultramarine

- x428 ⊕ [3-10] marginal block of six with large part imprint and part sheet number “3”, fine unmounted mint £120-150
- PROVENANCE:
Dr. Alan Knott-Craig, May 2015
- x429 ★ ⊕ Unplated marginal block of four from the left of the sheet, fine mint; and two singles with part and large part original gum; fine £120-150
- PROVENANCE:
Dr. Alan Knott-Craig, May 2015 for the block

Three Pence

The S.G. 173 group comprises 173 itself which is the perf. 15 equivalent of S.G. 136, a Short Gash printing, RSC “C”, “D”, “G” and “J”. The S.G. 173a group comprises RSC “E” and “F”

S.G. 173



430

- x430 ★ [16], the true S.G. 173 in exactly the same colour as the perf. 14 S.G. 136, large part original gum; fine and exceptionally rare. Photo £6,000-7,000
- PROVENANCE:
Sir Gawaine Baillie, September 2006
Dr. Alan Knott-Craig, May 2015

RSC "C", Purple and yellow-olive, Hook printing



431

x431 ★

Unplated, very fine mint. Rare with only three or four fine mint examples recorded. Photo

£3,000-3,500

RSC "D", Purple and yellow-olive, Thick Ear printing



432

x432 ★

[34], part original gum, fresh colours. An attractive example of this very rare stamp of which, perhaps only four or five are known, not all fine. R.P.S. Certificate (1974) incorrectly identifying it as S.G. 173a. Photo

£3,000-3,500



433

x433 ★

[45], large part original gum; fine. A very rare stamp of which perhaps only four or five examples are known, not all fine. Photo

£3,000-3,500

RSC "E", Claret and pale yellow-olive, Thick Ear printing



434

x434 ★田

[41-47] block of four, fresh deep colours and with large part original gum, [47] remaining unmounted mint. A fine and exceptionally rare multiple, being the finer of the two known. Photo

£8,000-9,000

PROVENANCE:
Lord Vestey, March 2015



435

x435 △

[1/6] vertical pair with 1/-, both cancelled with Umvuma double-ring datestamp (3 January 1913?, very light) and tied on piece. A most attractive and lovely piece. Photo

£250-300

PROVENANCE:
Gerald Simpson, December 1982
Norman Levin



437



436



438

RSC “F”, Lake and pale yellow-olive, Thick Ear printing

x436 ★ [42-47] vertical pair, [42] with hinge remainder, [47] unmounted mint; light vertical crease though an exceptional multiple and possibly unique multiple of this rare printing. B.P.A. Certificate (2007). Photo £1,800-2,000

RSC “G”, Purple and yellow-ochre, No Gash printing

x437 ★ [50] with plate scratch above left-hand value tablet, lightly mounted mint; tiny thin behind King’s forehead though of fine appearance. Rare. Certificate (2007). Photo £1,000-1,200

PROVENANCE:
Norman Levin
Lord Vestey, March 2007

RSC “J”, Purple and yellow-ochre, No Gash printing

x438 ★ [15], *Dot to left of tiara* and “medal” cut, fresh with large part original gum; small handstamp at lower left corner. A very fine and attractive example of this rare stamp. B.P.A. Certificate (1980). Photo £3,000-3,500

PROVENANCE:
Robert M. Gibbs, October 1987
Lord Vestey, March 2015

x439 ○ A lovely used reference set of all seven members of the S.G. 173 and 173a families, all but one with Bulawayo datestamps and RSC “G” with Bushtick 1913 datestamp. A wonderful group for the specialist £350-400

Four Pence

RSC “C”, Black and orange, Hook printing

x440 ⊕ⓑ A complete sheet of fifty, [2] *Hook in ear*, [5], [10], [20], [25], [30] and [40] with “medal” cuts, [15] *King’s eyebrow line* and “medal” cuts, [42] with printer’s mark at upper right, good colours and fresh unmounted mint; perforations split between the stamps of rows 5 and 6. A rare multiple £2,500-3,000

PROVENANCE:
Harry Birkhead, June 1986
Sir Gawaine Baillie, September 2006
Dr. Alan Knott-Craig, May 2015

Five Pence

S.G. 175, Lake-brown and brown-olive, No Gash printing



441

x441 ★田

[27-33] block of four, [28] with “Hairpin” flaw and the final state of the frame plate, fresh with large part original gum, fine and an extremely rare multiple. B.P.A. Certificate (2007). Photo

£3,000-3,500

PROVENANCE:

Norman Levin, November 1993
Lord Vestey, March 2015

RSC “C”, Lake-brown and yellow-olive, Thick Ear printing



442

x442 ★田

[1-7] block of four, [2] *Queen’s thick ear* and [6] “Tiara” flaw, fresh with large part original gum. A fine and extremely rare block. Photo

£4,000-5,000

PROVENANCE:

Robert M. Gibbs, October 1987
Sir Gawaine Baillie, September 2006
Lord Vestey, March 2007



443

x443 ★

Unplated, mint and very fine. Photo

£250-300

Six Pence

Plate I

RSC "D", Red-brown and crimson, Hook printing



444

x444 ★ [3], marginal with large part imprint, unmounted mint and very rare, only seven examples having been recorded to date. Photo £1,200-1,400



445



446

x445 ★ [5], well-centred for this stamp, fresh with part original gum. Fine and rare. Photo £1,200-1,400

x446 ★ [30], flaw to left of Queen's hair, unused with large part original gum; trace of a stained perf. at upper right, otherwise fine and very rare. B.P.A. Certificate (1980) as a S.G. 176 and the discovery stamp of the RSC "D" printing. Photo £1,000-1,200



447



448

x447 ⊕ [46] corner example; unmounted mint and very fine. Photo £1,200-1,400

x448 ○ Unplated, unwashed and with part original gum, fresh colours and cancelled with Bulawayo single-ring datestamp for "U 8/12"; fine and rare. Photo £250-300

Plate II

RSC “H”, Purple-brown and brown-purple, Thick Ear printing

The Spectacular and Highly Important Perf. 15 Multiple



449

x449 ★ ㊦

[1-4/6-9/11-13] irregular corner block of eleven, [2] *Queen's thick ear*, [4] “Queen’s cheek and King’s temple” flaws, [6] “tiara” flaw, [8/13] sharing printer’s mark, fresh mint with hinge remainders in margins and [13], all other stamps remaining unmounted mint. Superb and certainly the most spectacular and important perf. 15 multiple. Photo

£12,000-15,000

PROVENANCE:

Robert M. Gibbs, October 1987
 Sir Gawaine Baillie, September 2006
 Lord Vestey, March 2015



451



450



452

- x450 ★ [5], marginal and showing small part of sheet number at right, large part original gum; crease at far right, otherwise fine. Photo £300-400

Note: When this stamp was purchased in 2020 it was noticed that the "long" perforation at upper left was an exact match for the "short" perforation at the upper right of [4] in the block of eleven

PROVENANCE:
Sir Gawaine Baillie, September 2006

- x451 ★ Unplated, a large example with deep frame shade and heads, fine mint. Photo £600-700

RSC "I", Chocolate and brown-purple, No Gash printing

- x452 ⊕ Unplated, fresh unmounted mint. Exceptionally fine and rare. Photo £1,000-1,200

One Shilling

RSC "E", Black and blue-green, Thick Ear printing



453



455



454

- x453 ★ [39], lovely fresh colours, fine with large part original gum. Photo £500-600

- x454 ★ Unplated, fine with part original gum. Photo £500-600

PROVENANCE:
Dr. Alan Knott-Craig, May 2015

- x455 ○ [37-42] vertical pair, good colours and twice cancelled with Wankies double-ring datestamp for 10 August 1913, that on [42] being a complete strike; fine and a scarce used multiple. Photo £120-150

PROVENANCE:
Norman Levin



456



457



458



459

RSC “E”, variant ii, Blue-black and pale azure, Thick Ear printing

- x456 ○ [2] *Queen’s thick ear*, large part Bulawayo 1912 datestamp; a couple of short perfs., otherwise sound. Photo £100-120
- x457 ○ [9], full original gum and unwashed, good colours, part indistinct double-ring datestamp. Photo £100-120

RSC “F”, Black and (pale) turquoise-blue, No Gash printing

- x458 ★ [49] “vanishing heads” variant under ultra-violet, fine mint. Rare. Photo £600-700

RSC “G”, Black and (bright) turquoise-blue, No Gash printing

- x459 ★ [20], reacting dull olive under ultra-violet, lovely colours, fresh mint and a fine example of this rare printing. Photo £800-1,000



460



461

RSC “H”, Black and (bright) turquoise-blue, No Gash printing

- x460 ★ [3/8/13] vertical strip of three which reacts “flourescent pale green” under ultra-violet, large part original gum; [3] creased though a wonderful and very rare multiple. Photo £1,000-1,200

RSC “J”, Black and light blue, Thick Ear printing

- x461 ★ Unplated, light blue frame which flouresces vivid pale turquoise under ultra-violet, large part original gum; tiny thin just below hinge remnant. Rare. Photo £250-300

-
- x462 ○ Two very different printings, both totally non-reactive under ultra-violet and with late 1918 usages from Bulawayo (14 March) with a very blue frame and Gwelo (14 April) like a “G”. A fine and most unusual pair £120-150

Two Shillings

S.G. 178, Black and dull (greenish) blue, Thick Ear printing



463



464



465

- x463 ★ [45], large part original gum; very fine. Scarce. Photo £1,200-1,500
- x464 ★ [60] corner example, a huge well-centred stamp with fresh colours and large part original gum; vertical bends in margin where folded along perfs. in no way detracting from the superb appearance of this fabulous looking adhesive. An outstanding and lovely example of this rare stamp. Photo £1,200-1,500
- PROVENANCE:
Besançon, September 2020
- x465 ★ Unplated, fresh colours, large part original gum, fine and scarce. Photo £1,200-1,500
- PROVENANCE:
Dr. Alan Knott-Craig, May 2015



466



467



468

- x466 ○ [23] showing major doubling of frame at top, neatly cancelled with double-ring Gwelo datestamp for 2 September 1913. Lovely. Photo £150-200
- x467 ○ Unplated, part original gum and of excellent colour, neatly cancelled with near-complete Bulawayo 20 July 1913 double-ring datestamp; very fine. Photo £120-150
- x468 ○ Unplated, frame doubled at upper right, cancelled with complete Bulawayo 6 June 1913 double-ring datestamp, fine. Photo £120-150

S.G. 178, variant, Black and dull blue, Thick Ear printing



469

- x469 ★ [38], a huge example with wonderful colours, large part original gum. A beautiful example of this very rare stamp. Photo £1,200-1,500

RSC “B”, Black and dull blue, Short Gash printing



470



471

- x470 ★
[14], fresh with large part original gum; a very attractive and superb example of this rare stamp. Photo
£1,500-1,800
- x471 ○
Unplated, cancelled with large part Mazoe 1913 January double-ring datestamp; fine. Photo
£120-150

RSC “E”, Deep black and light blue, No Gash printing



472

- x472 ○
Unplated, cancelled by part Bulawayo double-ring datestamp for 8 July. Fine and rare. Robert M. Gibbs Certificate (2013) states “A rare stamp, only very few having been recorded to date. It is also an historic stamp having been the first P.15 example of its kind to be discovered and subsequently publicised in the philatelic press after it’s sale in Cavendish Philatelic Auctions in 1984”. Copies of documents accompany the lot. Photo
£800-1,000



473

- x473 ○
[41], good colours, neatly cancelled with large part Gwelo double-ring datestamp for August 1913. Rare. Photo
£800-1,000

One Pound

RSC "F", Red-brown and (deep) greenish slate, the so-called "Venetians", Hook printing

An Outstanding and Unique Multiple



474

x474 ★

[14/19] vertical pair, lovely colours and with large part original gum.

Superb and the outstanding and unique mint multiple.

B.P.A. Certificate (2000). Photo

£20,000-25,000



475

x475 ★

[15], *King's eyebrow line* and twisted entry at lower left, frame plate smear at top and "medal" cuts, lightly mounted mint.

A beautiful and outstanding example of this very rare printing.

B.P.A. Certificate (2007). Photo

£10,000-12,000

PROVENANCE:

Robert M. Gibbs, October 1987

Lord Vestey, March 2015

RSC “G”, (Deep) scarlet and (dark) greenish slate, the so-called “Scarlets”, Hook printing



476

x476 ○

Unplated, fiscally used with “*Ice Society Limi*” handstamp in violet, good colours, fine and scarce. Photo

£150-200

RSC “H”, (Deep) bright scarlet and blue-black, Hook printing



477

x477 ★

Unplated, large part original gum; very fine.

Exceptionally rare and quite possibly unique.

R.P.S. Certificate (1958) states “supplied by H.E. Wingfield & Co.” Photo

£12,000-15,000

Note: In the Underwood/Johnson handbook No. X it was stated that this stamp categorically did not exist mint in perf. 15. The current owner has never seen one before this example

PROVENANCE:

Pilkington

RSC “I”, Scarlet (red) and (bluish) grey-black, the so-called “Scarlets”, Hook printing



478

x478 ★

[2] *Hook in Queen’s ear*, wonderful fresh colours and well-centred, lightly mounted mint; trace of a gum bend towards upper right, not affecting the superb appearance of this exceptionally rare stamp which is believed unique as [2]. Photo

£10,000-12,000

PROVENANCE:

Senator John Strong

Bryant Rose, March 1995

Sir Gawaine Baillie, September 2006

Lord Vestey, March 2015

Combined Perforations

One Penny, Plate B

Carmine, Perf. 14x14x15x14



479

x479 ○

[82], very well-centred, cancelled with large part Bulawayo double-ring datestamp for 3 April 1912. An outstanding example of this exceptionally rare stamp of which only two examples are recorded. Photo

£2,500-3,000

Note: In the April/June issue of "The Philatelic Journal" Bernard Livermore wrote that this stamp was found amongst a box of Rhodesian stamps sent to the Oxford Committee for Famine Relief in c. 1963. The stamps were forwarded to Arnold Waterfall (Tibetan specialist) who examined them in detail finding ten perf. 13½ 1d. and the stamp offered above. The stamp was taken to Robson Lowe who confirmed that it was "quite genuine" and where it was subsequently bought by Livermore, with the other stamps, for £15. This lot is accompanied by photocopies of the Livermore article and an Arnold Waterfall affidavit

PROVENANCE:
Bernard Livermore



480

x480 ○

[86], cancelled with large part Bulawayo double-ring datestamp for 30 March 1912; light diagonal crease and stained though a presentable example of this very rare stamp. R.P.S. Certificate (1976). Photo

£1,200-1,500

Note: This and the above example of this very rare combined perforation were used only four days apart and being from the same row are very possibly from the same sheet

PROVENANCE:
"County", November 2003

Three Pence, Perf. 14x15

S.G. 180, Purple and ochre, RSC "I", Deep reddish purple and ochre, No Gash printing



481

- x481 ★ Unplated, well-centred and fresh bright colours, large part original gum. A fine and attractive example of this rare stamp. R.P.S. Certificate (2005). Photo £2,500-3,000
- PROVENANCE:
Donald Napier, April 2017



482



483

- x482 ○ [2] *No gash in Queen's ear*, neatly cancelled with upper portion of Gatooma double-ring datestamp for 23 May 1913 leaving *No gash* area clear; fine and scarce. Photo £150-200
- x483 ○ [24], headplate "fishhook" flaw and with 1mm. flaw north west of tip of King's curl, and frame plate flaw of constellation of dots in south west corner, cancelled with Salisbury machine datestamp for 5p.m. 11 February 1913; fine. Holcombe Certificate (1986). Photo £100-120



484



485

- x484 ○ [43], neatly cancelled with Macheke double-ring datestamp for 7 July 1913; very fine. Photo £120-150
- x485 ○ [45], cancelled by superb near-complete Beatrice Mine double-ring datestamp for 12 April 1913. Outstanding. Photo £150-200

Four Pence, Perf. 15x14

S.G. 181, Black and orange, RSC "C", Dull blue-black and dull orange, Hook printing



486

x486 ★田

[54-60] corner block of four with small part imprint, the lower pair unmounted, pristine mint and extremely fine. Blocks with margins are rare. Photo

£1,000-1,200

Perforation 13½

Halfpenny

Plate I, RJL 1, S.G. 182, Yellowish green group



487

x487 ★田

[87-98] block of four, lightly mounted mint with the lower pair remaining unmounted mint; a few small imperfections though of very fine appearance. B.P.A. Certificate (2007). Photo

£500-600

PROVENANCE:
Norman Levin
Lord Vestey, March 2015



488

x488 ☉

Unplated, fine unmounted mint. Photo

£100-120

PROVENANCE:
Paul Sundback



489

Plate II, RJL 4, S.G. 182a, Pale green group

x489 ★

[29] “double dot” variety, fine mint. The rarest of all the perf. 13½ printings. R.P.S. Certificate (1986). Photo

£400-500

PROVENANCE:
Paul Sundback

Plate II, RJL 5, Unlisted, Dull blue-green group



490



491

x490 ★田

[27-38] block of four, the top pair with part original gum, the lower pair remaining unmounted mint. A scarce multiple. B.P.A. Certificate (2007). Photo

£700-800

PROVENANCE:
Gerald Simpson, December 1982
Norman Levin, November 1993
Lord Vestey, March 2015

x491 ★

[89], “comet” flaw, fine with part original gum. Photo

£100-120

One Penny

S.G. 183, Bright carmine



492

x492 ☉田

[42-53] Plate B block of four, [53] with "AFRICA" re-entry, fresh with part original gum, the upper pair with an amazing gum skip across the whole of the lower half of the stamps and the lower pair with some gum loss due to other gum skips, though never previously mounted. Wonderful appearance and almost certainly unique with the re-entry. B.P.A. Certificate (1980). Photo

£5,000-6,000

PROVENANCE:
Lord Vestey, March 2015



493

x493 ★

[87B], the so-called "original" flaw to left of King's head repaired, fine with part original gum. Very rare with only two other perf. 13½ unused examples of this recorded to date, one other of which was in the Robert M. Gibbs, October 1987 sale. Photo

£800-1,000



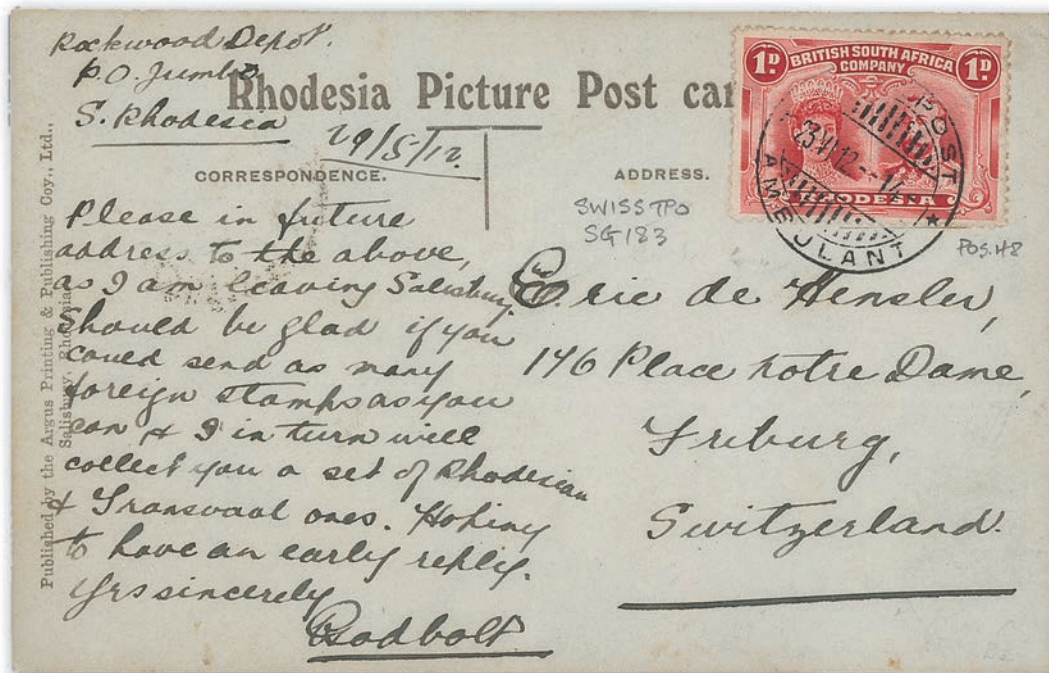
494



495

- x494 ◻ [22-33] Plate A block of four, each vertical pair neatly cancelled-to-order with doubling Gwelo datestamp for 21 July 1912. A fine, scarce and most attractive multiple. Photo £100-120
- x495 ◻ [41-52] Plate A block of four, fine strong colour and twice cancelled with Bulawayo double-ring datestamps for 22 December 1913. A scarce block. Photo £100-120

Postcard



496

- x496 ◻ 1914 (29 May) Argus Printing and Publishing Co. Ltd. real photo picture postcard (*The Rebellion Monument, The Cemetery, Salisbury*) from "Rockwood Depot P.O. Jumbo" to Friburg, Switzerland, bearing 1d. carmine, [48], neatly cancelled by "AMBULENT" double-ring transit datestamp (23.5). Rare and most unusual. Photo £250-300

Two Pence Halfpenny

S.G. 184, Dull ultramarine

- x497 ☉田 A block of four, fresh unmounted mint; one with a natural wrinkle £70-80
 PROVENANCE:
 Lord Vestey, March 2015
- x498 ★田 A block of four, fine mint £50-60
- x499 ○ Two used singles, one an early use with Bulawayo datestamp for 13 November 1910, the other with Battlefields Mine triple-ring for November 1910. An attractive pair £60-70

Eight Pence

S.G. 185, Black and purple, Long Gash printing



500



501

- x500 ★ [2] *Long gash in Queen's ear*, fine mint. Photo £100-120
 PROVENANCE:
 Paul Sundback
- x501 ★ [46] *King's extra curl* corner example, a large and very well-centred example. Very fine. Photo £120-150
 PROVENANCE:
 Paul Sundback



502



503

- x502 ★ Unplated, an amazing example showing peculiar impression of the heads which has been explained as follows: the paper being wetted for the second printing of the frames it appears that the frame ink, when wiped across the plate, adhered to the heavily inked portion of the heads, particularly noticeable in the Queen's and King's hair, the King's beard and tunic, and which should possibly been considered for printer's waste, fresh with part original gum. An extraordinary stamp. Photo £250-300
 PROVENANCE:
 "Royal Palm", March 2018
- x503 ★ Unplated, a beautifully inked stamp in the true colours of this printing, fine mint and highly attractive. Photo £200-250
 PROVENANCE:
 Paul Sundback

RSC “B”, Grey-black and dull purple, Long Gash printing



504



505



506

- x504 ★
[2] *Long gash in Queen’s ear*, fine mint. Photo
£300-350
- PROVENANCE:
 Robert M. Gibbs, October 1987
 Sir Gawaine Baillie, September 2006
 Dr. Alan Knott-Craig, May 2015
- x505 ★
Unplated, a large example in lovely fresh bright colours, large part original gum; fine and most attractive. Photo
£150-200
- x506 ★
Unplated, pale shades and well-centred, fine mint. Photo
£150-200

RSC “C”, (Purplish) grey-black and deep dull purple, Long Gash printing



507



508

- x507 ★
Unplated, a large example with lovely colours, fine mint. Photo
£120-150
- x508 ★
Unplated and with very pale heads, fine mint and most attractive. Photo
£120-150

RSC “D”, (Purplish) grey-black and dull purple, Long Gash printing



509



510

- x509 ★
[24] with heads more purple than normal, large part original gum; fine and most attractive. Photo
£100-120
- x510 ★
Unplated, large part original gum; fine. Photo
£100-120

RSC "E", Deep dull purple and deep dull purple, Long Gash printing



511



512

x511 ★ [2] *Long gash in Queen's ear*, part original gum; fractionally toned though probably unique. Photo £350-400

PROVENANCE:
Robert M. Gibbs, October 1987
Lord Vestey, March 2015

x512 ★ Unplated, remarkable inking, large part original gum; a little toned though highly unusual. Photo £250-300

S.G. 185a, Grey-purple and dull purple, Long Gash printing



513



514



515

x513 ★ [25] *Lines by King's cheek*, part original gum; a couple of shortish perfs. at foot. Photo £250-300

PROVENANCE:
Lord Vestey, March 2015

x514 ★ Unplated with unusual heads colour, part original gum. Photo £200-250

PROVENANCE:
Paul Sundback

x515 ★ Unplated and in the true colours, fresh mint. Very fine and rare. Photo £250-300



516



517

x516 ★ Unplated and in the true colours, really lovely inking, a large and well-centred example with large part original gum. An outstanding and stunning example. Photo £300-400

x517 ○ Unplated, neatly cancelled with Melsetter single-ring datestamp for 29 July 1915. A fine commercial usage. Memoir 34, pages 110 and 123, M51. Photo £250-300



518



520

x518 △

Unplated, wonderful colours neatly cancelled and tied on small piece by near-complete Odzi double-ring datestamp for 30 December 10; very fine. Photo

£250-300

PROVENANCE:
Norman Levin



519

x519 ☒

Unplated, placed vertically and tied by “TETE/ATT CO/ZAMBESIA” intaglio mail bag seal handstamp on envelope to J.N. Macdonald at Fort Usher, and with a fine and very readable further strike of the handstamp at lower left corner; the envelope with some faults nevertheless a quite remarkable cover. Photo

£1,000-1,200

Note: The Tete-African Trans Continental Co. in Mozambique formed part of Rhodes' dream to have British territories linked from Cape Town to Cairo and was originally planned to pass through Mount Darwin on its way to Tete. A temporary connection had been established when the Mashona Rebellion broke out, and the rebels destroyed much of the line. The construction camp was also attacked and several people working it were killed. The line was abandoned and later constructed to Tete from Inyanga

S.G. 185a, variant, Grey-purple and dull purple, Long Gash printing

x520 ★

[7], amazing head colour, very fresh appearance monochromatic, part original gum; fine and a wonderful example. Photo

£300-400

PROVENANCE:
Lord Vestey, March 2015

END OF THE SALE

INTERESTING AND UNUSUAL CANCELLATIONS**Perforated 14**

½d. 5
3d. 80, 98, 102
5d. 130
6d. 147
8d. 160
10d. 163, 169, 170, 173
1/- 176, 182, 183, 188, 189, 191, 194, 195, 199
2/- 204, 205, 206, 213
2/6d. 221, 222, 223, 230, 244, 260, 261 270,
271
3/- 278, 286
5/- 310
7/6d. 347, 351, 357
10/- 361, 366
£1 393, 395

Perforated 15

½d. 405
3d. 435
1/- 455
2/- 471

Perforated 14x15

3d. 482, 484, 485

Perforated 13½d.

8d. 517, 518, 519

COVERS**Perforated 14**

½d. 23, 24, 25, 26, 27, 28, 29
1d. 50, 51, 52, 53, 54, 55
2½d. 77
3d. 86
10d. 163

Perforated 15

½d. 408
1d. 417, 418, 419, 420, 421

Perforated 13½d.

½d. 498
8d. 519

FISCAL USAGES**Perforated 14**

1d. 46
1/- 196
5/- 317
£1 374, 390

Perforated 15

£1 476

SPINK


LONDON
1666

Sale Venue:
The Royal Philatelic Society London
15 Abchurch Lane
2nd Floor
London EC4N 7BW
tel: +44 (0)20 7563 4121/4104
fax: +44 (0)20 7563 4037
email: auctionteam@spink.com

WRITTEN BIDS FORM

This form should be sent or faxed to the Spink auction office in advance of the sale. References for new clients should be supplied in good time to be taken up before the sale. Bids received later than one hour before the start of the sale may not be processed.

RHODESIA 1910-13 DOUBLE HEAD ISSUE
THE COTTONWOOD COLLECTION
Robert M. Gibbs Trustee



SPINK
Where History is Valued

3 JUNE 2021
LONDON

NAME _____

ADDRESS _____

POSTCODE _____

69 Southampton Row, Bloomsbury,
London WC1B 4ET
tel: +44 (0)20 7563 4108/4103
fax: +44 (0)20 7563 4037
email: auctionteam@spink.com

YOU CAN ALSO BID IN REAL TIME ON SPINK LIVE.
PLEASE DOWNLOAD SPINK LIVE APP FROM THE
APP STORE OR VISIT WWW.SPINK.COM,
REGISTER AND LOG INTO THE SALE.

SALE TITLE	DATE	CODE NAME	SALE NO.
Rhodesia 1910-13 Double Head Issue The Cottonwood Collection	Thursday 3 June 2021 at 10.30 a.m.	TATUM	21020

I request Spink, without legal obligations of any kind on its part, to bid on the following Lots up to the price given below. I understand that if my bid is successful the Purchase Price will be the sum of the final bid and Buyer's Premium as a percentage of the final bid, any VAT chargeable, also postage charge and a fee for paying by card. The Rate of Buyer's Premium is 20% of the final hammer price of each lot. I understand Spink will pursue me for payment for any successful bid. In addition, I understand and consent that Spink may share my personal details relating to the default with other auction houses and live bidding platforms to protect themselves from such defaults.

All bids shall be treated as offers made on the Terms and Conditions for Buyers printed in the catalogue. I also understand that Spink provides the service of executing bids on behalf of clients for the convenience of clients and that Spink will not be held responsible for failing to execute bids. If identical commission bids are received for the same Lot, the commission bid received first by Spink will take precedence. Please note that you will not be notified if there are higher written bids received.

**BIDDERS PLEASE NOTE OUR EXTENSION CLAUSES IN OUR TERMS AND CONDITIONS FOR BUYERS
PLEASE PRINT CLEARLY IN BLOCK LETTERS AND ENSURE THAT BIDS ARE IN STERLING**

Lot Number (in numerical order)	Price Bid £ (excluding Buyer's Premium)

Lot Number (in numerical order)	Price Bid £ (excluding Buyer's Premium)

Lot Number (in numerical order)	Price Bid £ (excluding Buyer's Premium)

Please hold my purchased lots for collection

TEL. HOME _____ TEL. OFFICE _____

FAX _____ E-MAIL _____

SIGNATURE _____ VAT NUMBER _____

I agree to receive notifications about Spink auctions, news and events via email and direct mail

I agree to receive marketing notifications related only to the following categories (please select as appropriate)

Autographs / Banknotes / Bonds & Shares / Books / Coins / Comics / Handbags / Jewellery / Maps / Medals / Stamps / Watches / Whiskies & Spirits / Wine / Corporate News & Events

We will use the personal information you provide to us as set out in our privacy notice available at www.spink.com/privacy-policy

THE "DUBOIS" COLLECTION OF JAMAICA POSTAL HISTORY AND STAMPS

SPINK

WHERE HISTORY IS VALUED

Part II






14 July 2021 | LONDON



NEAR CASTLETON
ST ANDREW

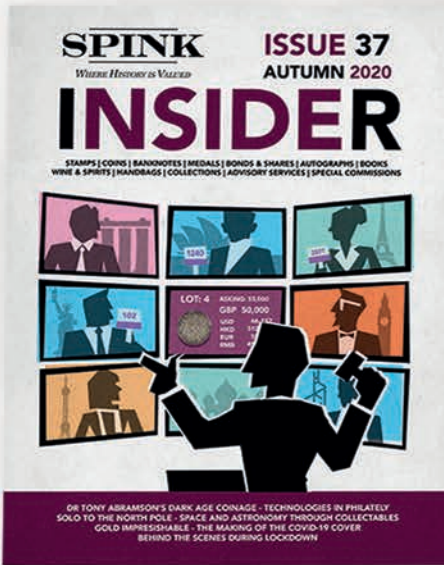
For more information please contact
Nick Startup | +44 (0)207 563 4073 | nstartup@spink.com
Josh Barber | +44 (0)207 563 4080 | jbarber@spink.com

SPINK LONDON | 69 Southampton Row | WC1B 4ET | United Kingdom

WWW.SPINK.COM Follow us on social media: #SPINK_AUCTIONS     

SPINK

INSIDER



THE NEW ONLINE PLATFORM

Read featured articles from our *Insider* magazine online, as well as exclusive special content not featured in the printed edition

Visit

[INSIDER.SPINK.COM](https://www.insider.spink.com)

STAMPS AND COVERS OF GREAT BRITAIN

SPINK

WHERE HISTORY IS VALUED

2 JUNE 2021 | LONDON



For more information please contact **Iain Murphy**

+44 (0)20 7563 4060 | imurphy@spink.com

SPINK LONDON | 69 Southampton Row | Bloomsbury | London | WC1B 4ET

#SPINK_AUCTIONS



WWW.SPINK.COM

TERMS AND CONDITIONS FOR BUYERS

These conditions set out the terms on which we (**Spink and Son Limited** of 69 Southampton Row, Bloomsbury London WC1B 4ET (company no. 04369748)) contract with you (**Buyer**) either as agent on behalf of the Seller or as principal if we are the Seller. You should read these conditions carefully.

1 DEFINITIONS

The following definitions apply in these conditions:

Margin Scheme and Auctioneers' Scheme

Buyer's Premium
Certificate of Authenticity
Expert Committee
Forgery

means VAT schemes as defined by HM Revenue & Customs;

means the charge payable by you as a percentage of the Hammer Price, at the rates set out in clause 5.1 below;

means a certificate issued by an Expert Committee confirming the authenticity of a Lot;

means a committee of experts to whom a Lot may be sent for an extension in accordance with clause 3.4.3;

means a Lot constituting an imitation originally conceived and executed as a whole with a fraudulent intention to deceive as to authorship, origin, age, period, culture or source where the correct description as to such matters is not reflected by the description in the catalogue and which at the date of the auction had a value materially less than it would have had if it had been in accordance with the description in the catalogue. Accordingly, no Lot shall be capable of being a Forgery by reason of any damage and/or restoration work of any kind (including re-enamelling);

Hammer Price
Lot

means the amount of the highest bid accepted by the auctioneer in relation to a Lot;

means any item deposited with us for sale at auction and, in particular, the item or items described against any Lot number in any catalogue;

Reserve
Seller

the amount below which we agree with the Seller that the Lot cannot be sold;

means the owner of the Lot being sold by us;

Spink Group
VAT
VAT Symbols

Spink and Son Limited, our subsidiaries and associated companies.

value added tax chargeable under VAT and any similar replacement or additional tax; and

means the symbols detailing the VAT status of the Lot details of which are set out at the back of the catalogue.

2 SPINK'S ROLE AS AGENT

2.1 All sales undertaken by us either at auction or privately are undertaken either as agent on behalf of the Seller or from time to time, as principal if we are the owner of the Lot. Please note that even if we are acting as agent on behalf of the Seller rather than as principal, we may have a financial interest in the Lot.

2.2 The contract for the sale of the Lot will be between you and the Seller.

2.3 The Seller's sale of the Lot to you is subject to any terms and conditions, disclaimers or exclusions included with any promotional material or catalogue descriptions for the Lot, or otherwise notified to you by the Seller or us on their behalf.

3.4.3 If we accept a request for an expert opinion or Certificate of Authenticity we will submit the Lot to the Expert Committee. You acknowledge and accept that the length of time taken by an Expert Committee to reach an opinion will vary depending on the circumstances and in any event is beyond our control.

3.4.4 We will not accept a request for an extension on account of condition. Any Lot described in the catalogue as having faults or defects may not be returned even if an expert opinion or Certificate of Authenticity cites other faults or defects not included in the catalogue description, other than in the case of a Forgery.

3.4.5 Should Spink accept a request for an extension under the foregoing provisions of this paragraph, the fact may be stated by the Auctioneer from the rostrum prior to the sale of the Lot.

3.4.6 It should be noted that any stamp accompanied by a Certificate of Authenticity is sold on the basis of that Certificate only and not on the basis of any other description or warranty as to authenticity. No request for an extension will be accepted on such a stamp and the return of such a stamp will not be accepted.

3.4.7 If you receive any correspondence from the Expert Committee in relation to the Lot, including but not limited to a Certificate of Authenticity, you must provide us with copies of such correspondence no later than 7 days after you receive such correspondence.

3 BEFORE THE SALE

3.1 Examination of goods

You are strongly advised to examine personally any goods in which you are interested, before the auction takes place. Condition reports are usually available on request. We provide no guarantee to you other than in relation to Forgeries, as set out in clause 5.13 of these Terms and Conditions.

3.2 Catalogue descriptions

3.2.1 Statements by us in the catalogue or condition report, or made orally or in writing elsewhere, regarding the authorship, origin, date, age, size, medium, attribution, genuineness, provenance, condition or estimated selling price of any Lot are merely statements of opinion, and are not to be relied on as statements of definitive fact. Catalogue and web illustrations are for guidance only, and should not be relied on either to determine the tone or colour of any item. No lot shall be rejected on the grounds of inaccurate reproduction. No lot illustrated in the catalogue and online shall be rejected on the grounds of cancellation, centring, margins, perforation or other characteristics apparent from the illustration. Estimates of the selling price should not be relied on as a statement that this price is either the price at which the Lot will sell or its value for any other purpose.

3.2.2 Many items are of an age or nature which precludes their being in perfect condition and some descriptions in the catalogue or given by way of condition report make reference to damage and/or restoration. We provide this information for guidance only and the absence of such a reference does not imply that an item is free from defects or restoration nor does a reference to particular defects imply the absence of any others.

3.2.3 Other than as set out in clause 5.13, and in the absence of fraud, neither the Seller nor we, nor any of our employees or agents, are responsible for the correctness of any statement as to the authorship, origin, date, age, attribution, genuineness or provenance of any Lot nor for any other errors of description or for any faults or defects in any Lot. Every person interested should exercise and rely on his own judgment as to such matters.

3.3 Your Responsibility

You are responsible for satisfying yourself as to the condition of the goods and the matters referred to in the catalogue description.

3.4 Extensions – Stamps only

3.4.1 If you wish to obtain an expert opinion or Certificate of Authenticity on any Lot (other than a mixed Lot or Lot containing undescribed stamps) you must notify us in writing not less than forty-eight hours before the time fixed for the commencement of the first session of the sale. If accepted by us, such request shall have the same effect as notice of an intention to question the genuineness or description of the Lot for the purposes of clause 5.13 (Refund in the case of Forgery) of these Terms and Conditions and the provisions of clause 5.13 (Refund in the case of Forgery) shall apply accordingly.

3.4.2 Notice of a request for an expert opinion or Certificate of Authenticity must give the reason why such opinion is required and specify the identity of your proposed expert which will be subject to agreement by us. We reserve the right, at our discretion, to refuse a request for an expert opinion or Certificate of Authenticity including (without limitation) where the proposed expert is not known to us.

4 AT THE SALE

4.1 Refusal of admission

Our sales usually take place on our own premises or premises over which we have control for the sale, and we have the right, exercisable at our complete discretion, to refuse admission to the premises or attendance at an auction.

4.2 Registration before bidding

All bidders must be registered either by completing a registration form or creating an account online. Please be aware that we usually require buyers to present identification before making a bid at auction, undergo a credit check or provide a trade reference.

If you have not bid successfully with Spink in the past, or you are registering with us for the first time, we reserve the right to require a deposit of up to 50% of the amount you intend to spend. Such deposit will be deducted from your invoice should you be successful. If you are unsuccessful at auction, your deposit will be returned by the same means it was paid to Spink.

Some lots may be designated, prior to the auction, as "Premium Lots", which means a deposit may be required before placing a bid on the item for sale. Information will be posted on our website in such an event.

4.3 Bidding as Principal

When making a bid (whether such bids are made in person or by way of telephone bids operated by Spink, commission or online or email bids), you will be deemed to be acting as principal and will be accepting personal liability, unless it has been agreed in writing, at the time of registration, that you are acting as agent on behalf of a third party buyer acceptable to us.

4.4 Commission Bids

If you give us instructions to bid on your behalf, by using the form provided in our catalogues or via our website, we shall use reasonable endeavours to do so, provided these instructions are received not later than 24 hours before the auction. If we receive commission bids on a particular Lot for identical amounts, and at auction these bids are the highest bids for the Lot, it will be sold to the person whose bid was received first. Commission bids are undertaken subject to other commitments at the time of the sale, and the conduct of the auction may be such that we are unable to bid as requested. Since this is undertaken as a free service to prospective buyers on the terms stated, we cannot accept liability for failure to make a commission bid. You should therefore always attend personally if you wish to be certain of bidding.

- 4.5 **On-line Bidding**
We offer internet services as a convenience to our clients. We will not be responsible for errors or failures to execute bids placed on the internet, including, without limitation, errors or failures caused by (i) a loss of internet connection by either party for whatever reason; (ii) a breakdown or problems with the online bidding software and/or (iii) a breakdown or problems with your internet connection, computer or system. Execution of on-line internet bids on www.spink.com and Spink Live is a free service undertaken subject to other commitments at the time of the auction and we do not accept liability for failing to execute an online internet bid or for errors or omissions in connection with this activity.
- 4.6 **Telephone Bids**
If you make arrangements with us not less than 24 hours before the sale, we shall use reasonable endeavours to contact you to enable you to participate in bidding by telephone, but in no circumstances will we be liable to either the Seller or you as a result of failure to do so.
- 4.7 **Currency Converter**
At some auctions, a currency converter will be operated, based on the one month forward rates of exchange quoted to us by Barclays Bank Plc or any other appropriate rate determined by us, at opening on the date of the auction. Bidding will take place in a currency determined by us, which is usually sterling for auctions held in London. The currency converter is not always reliable, and errors may occur beyond our control either in the accuracy of the Lot number displayed on the converter, or the foreign currency equivalent of sterling bids. We shall not be liable to you for any loss suffered as a result of you following the currency converter.
- 4.8 **Video images**
At some auctions there will be a video screen. Mistakes may occur in its operation, and we cannot be liable to you regarding either the correspondence of the image to the Lot being sold or the quality of the image as a reproduction of the original.
- 4.9 **Bidding Increments**
Bidding generally opens below the low estimate and advances in the following order although the auctioneer may vary the bidding increments during the course of the auction. The normal bidding increments are:
- | | |
|--------------------|----------------------------------|
| Up to £100 | by £5 |
| £100 to £300 | by £10 |
| £300 to £600 | £320-£350-£380-£400 etc. |
| £600 to £1,000 | by £50 |
| £1,000 to £3,000 | by £100 |
| £3,000 to £6,000 | £3,200-£3,500-£3,800-£4,000 etc. |
| £6,000 to £10,000 | by £500 |
| £10,000 to £20,000 | by £1,000 |
| £20,000 and up | Auctioneer's discretion |
- 4.10 **Bidding by Spink**
- 4.10.1 We reserve the right to bid on Lots on the Seller's behalf up to the amount of the Reserve (if any), which will never be above the low estimate printed in the auction catalogue.
- 4.10.2 The Spink Group reserves the right to bid on and purchase Lots as principal.
- 4.10.3 Lots with this symbol (Ⓢ) indicate that a party has provided Spink with an irrevocable bid on the lot that will be executed during the sale at a value that ensures that the lot will sell. The irrevocable bidder, who may bid in excess of the irrevocable bid, will be compensated based on his bid in the event he or she is not the successful bidder or may receive a fixed fee in the event he or she is the successful bidder. If the irrevocable bidder is the successful bidder, the fixed fee for providing the irrevocable bid may be netted against the irrevocable bidder's obligation to pay the full purchase price for the lot. If the irrevocable bid is not secured until after the printing of the auction catalogue, a pre-sale announcement will be made indicating that there is an irrevocable bid on the lot.
- If you are interested in placing an irrevocable bid in an auction, please contact us at chairmanoffice@spink.com. Typically, only some of the lots with an estimate, which must exceed £100,000 or equivalent in other currencies are open to irrevocable bids.
- 4.11 **The Auctioneer's Discretion**
The auctioneer has the right at his absolute discretion to refuse any bid to advance the bidding in such manner as he may decide to withdraw or divide any Lot, to combine any two or more Lots and, in the case of error or dispute, to put an item up for bidding again.
- 4.12 **Successful Bid**
Subject to the auctioneer's discretion, the striking of his hammer marks the acceptance of the highest bid, provided always that such bid is higher than the Reserve (where applicable), and the conclusion of a contract for sale between you and the Seller.
- 4.13 **After Sale Arrangements**
If you enter into any private sale agreements for any Lot with the Seller within 60 days of the auction, we, as exclusive agents of the Seller reserve the right to charge you the applicable Buyer's Premium in accordance with these Terms and Conditions, and the Seller a commission in accordance with the terms of the Seller's agreement.
- 4.14 **Return of Lot**
- 4.14.1 Once your bid has been accepted for a Lot then you are liable to pay for that Lot in accordance with these Terms and Conditions. If there are any problems with a Lot then you must notify us within 7 days of receipt of the Lot, specifying the nature of the problem. We may then request that the Lot is returned to us for inspection. Save as set out in clause 5.13, the cancellation of the sale of any Lot and the refund of the corresponding purchase price is entirely at our sole discretion. We will not normally exercise that discretion if the Lot is not received by us in the same condition that it was in at the auction date.
- 4.14.2 No lot may be returned on account of condition if the condition was stated by a third party grading company (including, but not limited to PCGS, NGC, ANACS, ICG, PMG, WBG, Legacy Currency Grading).
- 5 **AFTER THE AUCTION**
- 5.1 **Buyer's Premium and other charges**
In addition to the Hammer Price, you must pay us the Buyer's Premium at a rate of 20% of the final Hammer price of each lot, postage charge and a fee for paying by card.
- 5.2 **Value Added Tax**
Other than in respect of Zero-rated Lots (o) VAT is chargeable on the Hammer price and the Buyer's premium of daggered (†) and (Ω) lots at the standard rate (currently 20%), and on lots marked (x) at the reduced rate (currently 5% on the Hammer price and 20% on the Buyer's premium). VAT on Margin scheme lots (identified by the absence of any VAT symbol next to the lot number) is payable at 20% on the Buyer's premium only.
- 5.3 **VAT Refunds – Buyers from outside the UK**
- General**
- 5.3.1 As we remain liable to account for VAT on all Lots unless they have been exported outside the UK within 3 months of the date of sale, you will generally be asked to deposit all amounts of VAT invoiced. However, if a Spink nominated shipper is instructed, then any refundable VAT will not be collected. In all other cases credits will be made when proof of export is provided. If you export the Lot outside the UK yourself you must obtain shipping documents from the Shipping Department for which a charge of £50 will be made.
- 5.3.2 If you export the Lot you must return the valid proof of export certificate to us within 3 months of the date of sale. If you fail to return the proof of export certificate to us within such period and you have not already accounted to us for the VAT, you will be liable to us for the full amount of the VAT due on such Lot and we shall be entitled to invoice you for this sum.
- 5.3.3 To apply for a refund of any VAT paid, the proof of export certificate must be sent to our Shipping Department clearly marked 'VAT Refund' within 3 months of the date of sale. No payment will be made where the total amount of VAT refundable is less than £50 and Spink will charge £50 for each refund processed.
- 5.3.4 Where a Lot is included within the Margin Scheme and Auctioneers' Scheme and evidence of export from the UK is produced within 3 months of the date of sale, the VAT on Buyer's Premium may be refunded.
- 5.3.5 Where the Lot is marked as a Daggered (†) Lot the VAT charged on the Hammer Price may be refunded where evidence of export from the UK is produced within 3 months of the date of sale. A refund of VAT charged on the Buyer's Premium can also be made on receipt of proof of business as a collectibles dealer.
- 5.3.6 Where the Lot is marked as an Omega (Ω) Lot or an Import VAT (x) Lot and evidence of export from the UK is produced within 3 months of the date of sale, the VAT charged on both the Hammer Price and Buyer's Premium may be refunded. Where required, we can advise you on how to export such Lots as a specific form of export evidence is required. Where we advise you on the export of the Lots, please be aware that the ultimate responsibility in respect of obtaining a valid proof of export certificate will lie with you and we will not be responsible for your failure to obtain such certificate.
- 5.3.7 Lot marked as Investment Gold (g) is exempt from VAT on Hammer price. A refund of VAT charged on the Buyer's Premium can be made on receipt of proof of business as a collectibles dealer and where evidence of export from the UK is produced within 3 months of the date of sale.
- 5.4 **Payment**
- 5.4.1 You must provide us with your full name and permanent address and, if so requested, details of the bank from which any payments to us will be made. You must pay the full amount due (comprising the Hammer Price, the Buyer's Premium and any applicable VAT) within seven days after the date of the sale. This applies even if you wish to export the Lot and an export licence is (or may be) required.
- 5.4.2 You will not acquire title to the Lot until all amounts due have been paid in full. This includes instances where special arrangements were made for release of Lot prior to full settlement.
- 5.4.3 Payment should be made in sterling by one of the following methods:
- Direct bank transfer to our account details of which are set out on the invoice. All bank charges shall be met by you. Please ensure that your client number is noted on the transfer.
 - By cheque or bank draft made payable to Spink and Son Ltd and sent to Spink at 69 Southampton Row, Bloomsbury, London WC1B 4ET. Please note that the processing charges for payments made by cheques or bank drafts drawn on a non-U.K bank shall be met by you. Please ensure that the remittance slip printed at the bottom of the invoice is enclosed with your payment.

- (iii) By Visa or Mastercard. All Corporate cards regardless of origin and Consumer debit and credit cards issued outside the EU are subject to a fee of 3%. For all card payments there are limits to the amounts we will accept depending on the type of card being used and whether or not the cardholder is present.
- 5.4.4 Payments should be made by the registered buyer and not by third parties, unless it has been agreed at the time of registration that you are acting as an agent on behalf of a third party.
- 5.5 Invoices**
Invoices may consist of one or more pages and will show: Zero rated Lots (o); no symbol Lots sold under the Margin Scheme and Auctioneers' Scheme; Lots marked (g) special scheme Investment Gold; Daggered Lots (†), imported Lots marked (x) and (Ω).
- 5.6 Collection of Purchases**
5.6.1 Unless specifically agreed to the contrary, we shall retain lots purchased until all amounts due to us, or to the Spink Group, have been paid in full. Buyers will be required to pay for their lots when they wish to take possession of the same, which must be within 7 days of the date of the sale, unless prior arrangements have been made with Spink. Without prior agreement, lots will not be released until cleared funds are received with regard to payments made by cheque.
5.6.2 Unless we notify you to the contrary, items retained by us will be covered in accordance with our policy which is available for inspection at our offices from the date of sale for a period of seven days or until the time of collection, whichever is sooner. After seven days or from the time of collection, whichever is the earlier, the Lot will be entirely at your risk.
5.6.3 Our policy will not cover and we are unable to accept responsibility for damage caused by woodworm, changes in atmospheric conditions or acts of terrorism.
- 5.7 Notification**
We are not able to notify successful bidders by telephone. While Invoices are sent out by email or mail after the auction we do not accept responsibility for notifying you of the result of your bid. You are requested to contact us by telephone or in person as soon as possible after the auction to obtain details of the outcome of your bids to avoid incurring charges for late payment.
- 5.8 Packing and handling**
5.8.1 We shall use all reasonable endeavours to take care when handling and packing a purchased Lot but remind you that after seven days or from the time of collection, whichever is sooner, the Lot is entirely at your risk. Our postage charges are set out at the back of the catalogue.
5.8.2 It is the responsibility of the Buyer to be aware of any Import Duties that may be incurred upon importation to the final destination. Spink will not accept return of any package in order to avoid these duties. The onus is also on the Buyer to be aware of any Customs import restrictions that prohibit the importation of certain collectibles. Spink will not accept return of the Lot(s) under these circumstances. Spink will not accept responsibility for Lot(s) seized or destroyed by Customs.
5.8.3 If the Buyer requires delivery of the Lot to an address other than the invoice address this will be carried out at the discretion of Spink.
- 5.9 Recommended packers and shippers**
If required our shipping department may arrange shipment as your agent. Although we may suggest carriers if specifically requested, our suggestions are made on the basis of our general experience of such parties in the past and we are not responsible to any person to whom we have made a recommendation for the acts or omissions of the third parties concerned.
- 5.10 Remedies for non-payment or failure to collect purchases**
5.10.1 If you fail to make payment within seven days of your stipulated payment date set out in your invoice, we shall be entitled to exercise one or more of the following rights or remedies:
5.10.1.1 to charge interest at the rate of 2% per month compound interest, calculated on a daily basis, from the date the full amount is due;
5.10.1.2 to set off against any amounts which the Spink Group may owe you in any other transaction the outstanding amount remaining unpaid by you;
5.10.1.3 we may keep hold of all or some of your Lots or other property in the possession of the Spink Group until you have paid all the amounts you owe us or the Spink Group, even if the unpaid amounts do not relate to those Lots or other property. Following fourteen days' notice to you of the amount outstanding and remaining unpaid, the Spink Group shall have the right to arrange the sale of such Lots or other property. We shall apply the proceeds in discharge of the amount outstanding to us or the Spink Group, and pay any balance to you;
5.10.1.4 where several amounts are owed by you to the Spink Group in respect of different transactions, to apply any amount paid to discharge any amount owed in respect of any particular transaction, whether or not you so direct;
5.10.1.5 to reject at any future auction any bids made by you or on your behalf or obtain a deposit from you before accepting any bids.
5.10.2 If you fail to make payment within thirty-five days, we shall in addition be entitled:
5.10.2.1 to cancel the sale of the Lot or any other item sold to you at the same or any other auction;
5.10.2.2 to arrange a resale of the Lot, publicly or privately, and, if this results in a lower price being obtained, claim the balance from you together with all reasonable costs including a 20% seller's commission, expenses, damages, legal fees, commissions and premiums of whatever kind associated with both sales or otherwise, incurred in connection with your failure to make payment;
5.10.2.3 when reselling the Lot, place a notice in our catalogue stating that you successfully purchased the Lot at auction but have subsequently failed to pay the Hammer Price of the Lot; or
5.10.2.4 take any other appropriate action as we deem fit.
5.10.3 If you fail to collect within fourteen days after the sale, whether or not payment has been made, you will be required
5.10.3.1 to pay a storage charge of £2 per item per day plus any additional handling cost that may apply.
5.10.3.2 you will not be entitled to collect the Lot until all outstanding charges are met, together with payment of all other amounts due to us.
- 5.11 Use of Default Information**
If you fail to make payment for a Lot in accordance with these Terms and Conditions:
5.11.1 we reserve the right to refuse you the right to make bids for any future auction irrespective of whether previous defaults have been settled; and
5.11.2 you acknowledge that we may (as necessary for our legitimate interests those of other auctioneers and live bidding platforms in referencing customers and avoiding customer defaults) disclose details of such default to other auctioneers and live bidding platforms, which will include your name, address, nature of the default and the date of the default.
Auctioneers or live bidding platforms who receive details of the default may rely on such information when deciding whether to enter into a transaction with you in the future.
- 5.12 Export Licence**
5.12.1 If required we can, at our discretion, advise you on the detailed provisions of the export licensing regulations. Where we advise you in relation to export licensing regulations the ultimate responsibility in respect of any export will lie with you and we will not be responsible for your failure to apply for any necessary licences.
5.12.2 If the Lot is going to be hand carried by you, you may be required to produce a valid export licence to us or sign a waiver document stating that a licence will be applied for.
5.12.3 You should always check whether an export licence is required before exporting. Export licences are usually obtained within two or three weeks but delays can occur.
5.12.4 Unless otherwise agreed by us in writing, the fact that you wish to apply for an export licence does not affect your obligation to make payment within seven days nor our right to charge interest on late payment.
5.12.5 If you request that we apply for an export licence on your behalf, we shall be entitled to recover from you our disbursements and out of pocket expenses in relation to such application, together with any relevant VAT.
5.12.6 We will not be obliged to rescind a sale nor to refund any interest or other expenses incurred by you where payment is made by you despite the fact that an export licence is required.
- 5.13 Refund in the case of Forgery**
5.13.1 A sale will be cancelled, and the amount paid refunded to you if a Lot (other than a miscellaneous item not described in the catalogue) sold by us proves to have been a Forgery. We shall not however be obliged to refund any amounts if either (a) the catalogue description or saleroom notice at the auction date corresponded to the generally accepted opinion of scholars or experts at that time, or fairly indicated that there was a conflict of opinions, or (b) it can be demonstrated that the Lot is a Forgery only by means of either a scientific process not generally accepted for use until after publication of the catalogue or a process which at the date of the auction was unreasonably expensive or impracticable or likely to have caused damage to the Lot. Furthermore, you should note that this refund can be obtained only if the following conditions are met:
5.13.1.1 you must notify us in writing, within seven days of the receipt of the Lot(s), that in your view the Lot concerned is a Forgery;
5.13.1.2 you must then return the item to us within fourteen days from receipt of the Lot(s), in the same condition as at the auction date; and
5.13.1.3 as soon as possible following return of the Lot, you must produce evidence satisfactory to us that the Lot is a Forgery and that you are able to transfer good title to us, free from any third party claims.
5.13.1.4 you must provide to us all evidence obtained by you that a Lot is a Forgery no later than 7 days after you receive such evidence.
5.13.2 In no circumstances shall we be required to pay you any more than the amount paid by you for the Lot concerned and you shall have no claim for interest.
5.13.3 The benefit of this guarantee is not capable of being transferred, and is solely for the benefit of the person to whom the original invoice was made out by us in respect of the Lot when sold and who, since the sale, has remained the owner of the Lot without disposing of any interest in it to any third party.
5.13.4 We shall be entitled to rely on any scientific or other process to establish that the Lot is not a Forgery, whether or not such process was used or in use at the date of the auction.

6 LIABILITY

Nothing in these Terms and Conditions limits or excludes our liability for:

- 6.1 death or personal injury resulting from negligence; or
- 6.2 any damage or liability incurred by you as a result of our fraud or fraudulent misrepresentation.

7 USE OF YOUR PERSONAL INFORMATION

- 7.1 We will use the personal information you provide to us as set out in our privacy notice (available at <https://spink.com/privacy-policy>) and in particular to:
 - 7.1.1 process the bids you make on Lots (whether successful or otherwise) and other auction related services we provide;
 - 7.1.2 process your payment relating to a successful purchase of a Lot;
 - 7.1.3 arrange for delivery of any Lot you purchase, which will include passing your details to shipping providers and, on overseas deliveries, to customs where they make enquiries regarding the Lot;
 - 7.1.4 inform you about similar products or services that we provide, but you may stop receiving these at any time by contacting us.
- 7.2 In accordance with clause 4.2, we may pass your information to credit reference agencies in order to obtain credit checks from them, and they may keep a record of any search that they do.
- 7.3 In accordance with clause 5.11, where you default on making payment for a Lot in accordance with these terms and conditions we may disclose details of such default to other auctioneers and live bidding platforms.
- 7.4 We are also working closely with third parties (including, for example, other auctioneers and live bidding platforms) and may receive information about you from them.
- 7.5 Where you provide us with personal information about other individuals, you must ensure that your provision of that information is compliant with applicable data protection law.

8 COPYRIGHT

- 8.1 We shall have the right (on a non-exclusive basis) to photograph, video or otherwise produce an image of the Lot. All rights in such an image will belong to us, and we shall have the right to use it in whatever way we see fit.
- 8.2 The copyright in all images, illustrations and written material relating to a Lot is and shall remain at all times our property and we shall have the right to use it in whatever way we see fit. You shall not use or allow anyone else to use such images, illustrations or written material without our prior written consent.

9 VAT

You shall give us all relevant information about your VAT status and that of the Lot to ensure that the correct information is printed in the catalogues. Once printed, the information cannot be changed. If we incur any unforeseen cost or expense as a result of the information being incorrect, you will reimburse to us on demand the full amount incurred.

10 NOTICES

All notices given under these Terms and Conditions may be served personally, sent by 1st class post, or faxed to the address given to the sender by the other party. Any notice sent by post will be deemed to have been received on the second working day after posting or, if the addressee is overseas, on the fifth working day after posting. Any notice sent by fax or served personally will be deemed to be delivered on the first working day following despatch.

11 ADDITIONAL PROVISIONS

The following provisions of this clause 11 shall apply only if you are acting for the purposes of your business.

11.1 Limitation of Liability

Subject to clause 6, we shall not be liable, whether in tort (including for negligence) or breach of statutory duty, contract, misrepresentation or otherwise for any:

- 11.1.1 loss of profits, loss of business, depletion of goodwill and/or similar losses, loss of anticipated savings, loss of goods, loss of contract, loss of use, loss of corruption of data or information; or
- 11.1.2 any special, indirect, consequential or pure economic loss, costs, damages, charges or expenses.

11.2 Severability

If any part of these Terms and Condition is found by any court to be invalid, illegal or unenforceable, that part may be discounted and the rest of the conditions shall continue to be valid and enforceable to the fullest extent permitted by law.

11.3 Force majeure

We shall have no liability to you if we are prevented from, or delayed in performing, our obligations under these Terms and Conditions or from carrying on our business by acts, events, omissions or accidents beyond our reasonable control, including (without limitation) strikes, lock-outs or other industrial disputes (whether involving our workforce or the workforce of any other party), failure of a utility service or transport network, act of God, war, riot, civil commotion, malicious damage, compliance with any law or governmental order, rule, regulation or direction, accident, breakdown of plant or machinery, fire, flood, storm or default of suppliers or subcontractors.

11.4 Waiver

11.4.1 A waiver of any right under these Terms and Conditions is only effective if it is in writing and it applies only to the circumstances for which it is given. No failure or delay by a party in exercising any right or remedy under these Terms and Conditions or by law shall constitute a waiver of that (or any other) right or remedy, nor preclude or restrict its further exercise. No single or partial exercise of such right or remedy shall preclude or restrict the further exercise of that (or any other) right or remedy.

11.4.2 Unless specifically provided otherwise, rights arising under these Terms and Conditions are cumulative and do not exclude rights provided by law.

11.5 Law and Jurisdiction

11.5.1 These Terms and Conditions and any dispute or claim arising out of or in connection with them or their subject matter, shall be governed by, and construed in accordance with, the law of England and Wales.

11.5.2 The parties irrevocably agree that the courts of England and Wales shall have exclusive jurisdiction to settle any dispute or claim that arises out of, or in connection with, Terms and Conditions or their subject matter.

Postal Charges

Prices for all items including postage and packaging

Invoice Value	UK	EU	Rest of the World
Up to £1,500	£12	£20	£30
Up to £10,000	£20	£40	£60
Above £10,001	£30	£60	£90

The above fees are in GBP and would be converted into the sale currency if applicable.

Shipments of more than 2kg or volumetric measurement of more than 2kg have to be sent by courier. Certain countries may incur extra charge when courier services are required by our insurance policy. For lots sent by courier please contact Auctionteam@spink.com for calculation of any further relevant cost in addition to the above charges.

Value Added Tax (VAT)

Charging of (VAT) at Auction

The information shown on this page sets out the way in which Spink intends to account for VAT.

i. Margin Scheme and Auctioneers' Scheme

1. Where possible, we will offer Lots for sale under the Margin Scheme and Auctioneers' Scheme. Such Lots can be identified by the absence of any VAT symbol next to the Lot number in the catalogue. Such lots are subject to 20% VAT on the Buyers' Premium but are not subject to VAT on the Hammer Price.
2. Where Lots are sold using the Margin Scheme and Auctioneers' Scheme to UK VAT-registered businesses, the VAT on Buyers' Premium is not recoverable as input tax. Upon request on sale day, we will issue invoices that show VAT separately on both the Hammer Price and the Buyer's Premium. This will enable VAT-registered businesses to recover the VAT charged as input tax, subject to the normal rules for recovering input tax.

ii. Zero-Rated Lots

Limited Categories of goods, such as books, are Zero-rated (o) for VAT in the United Kingdom. Such Lots are offered under the Auctioneers' Scheme. In these circumstances no VAT will be added to the Buyer's premium.

iii. Daggged Lots

Lots which are Daggged (†) in the catalogue are subject to VAT at 20% on both the Hammer Price and the Buyer's Premium.

iv. Imported and Omega Lots

Lots which are marked (x) in the catalogue are subject to VAT at 5% on the Hammer price plus 20% on the Buyer's premium. Lots which bear the Omega symbol (Ω) are subject to VAT at 20% on the Hammer Price and on the Buyer's Premium. This VAT is payable on items imported from outside the UK. In these cases we have used a temporary importation procedure, which in effect means that the point of importation is deferred until the Lot has been sold. At this point the Buyer is treated as the importer and is liable to pay the import VAT due. We will collect the VAT from you and pay it to HM Customs and Excise on your behalf.

v. Investment Gold Lots

Lots marked (g) in the catalogue are exempt from VAT on the Hammer Price and are subject to VAT at 20% on the Buyer's Premium. A refund of VAT charged on the Buyer's Premium can also be made on receipt of proof of business as a collectibles dealer outside of the UK.

SPINK

WHERE HISTORY IS VALUED

SALE CALENDAR 2021

STAMPS

26 April-13 May	The "Maurice Jacob" Collection of Saudi Arabia e-Auction	London	21112
5/6 May	Important Stamps and Covers of the World	London	21019
26 May-10 June	Stamps of the World e-Auction	London	21111
29 May	The Philatelic Collectors' Series Sale	Hong Kong	CSS65
2 June	Great Britain Stamps and Postal History including the Beechwood Collection	London	21022
3 June	Rhodesia Double Head Issue: The Cottonwood Collection	London	21020
3 June	The "Dubois" Collection of Jamaica Postal History and Stamps - Part II	London	21041

COINS

31 March-14 May	The Piccadilly List	London	21005
12 -27 May	World Coins and Medals e-Auction	London	21158
22 May	The Numismatic Collectors' Series sale	Hong Kong	CSS62
5 June	South East Asian Banknotes and Coins	Hong Kong	CSS66
8-22 June	Spink Numismatic e-Circular 9	London	21124
29 Jun-14 Jul	The Numismatic Collector's Series e-Auction	New York	370
23 June	Coins and Commemorative Medals Summer Auction	London	21006
7-28 September	Spink Numismatic e-Circular 10: Indian & Islamic Coins	London	21125
29 September	Coins and Commemorative Medals Autumn Auction	London	21007

BANKNOTES

21 April	Drs Joanne and Edward Dauer Collection of English Banknotes	London	21055
28 April	World Banknotes	London	21008
22 May	The Numismatic Collectors' Series sale	Hong Kong	CSS62
25 May-8 June	British Banknotes e-Auction	London	21109
5 June	South East Asian Banknotes and Coins	Hong Kong	CSS66
29 June-13 July	World Banknotes e-Auction	London	21130

MEDALS

22 May	The Numismatic Collectors' Series sale	Hong Kong	CSS62
17-30 June	Orders, Decorations and Medals e-Auction 3	London	21102
28-29 July	Orders, Decorations and Medals	London	21002

BONDS & SHARES

11-26 May	Bonds and Share Certificates of the World e-Auction	London	21142
22 May	The Numismatic Collectors' Series sale	Hong Kong	CSS62
6-20 July	Bonds and Share Certificates of the World e-Auction	London	21143

HISTORICAL DOCUMENTS

21-28 January	Autographs & Documents e-Auction featuring the Mike Roth Aviation Collection Part II	New York	369
---------------	--	----------	-----

LIFESTYLE COLLECTABLES

27 Apr - 2 May	Fine Whisky & Rum E-Auction	Hong Kong	SFW37
3-14 December	Estates & Collections e-Auction	New York	365

The above sale dates are subject to change

Spink offers the following services:

- VALUATIONS FOR INSURANCE AND PROBATE FOR INDIVIDUAL ITEMS OR WHOLE COLLECTIONS -
- SALES ON A COMMISSION BASIS EITHER OF INDIVIDUAL PIECES OR WHOLE COLLECTIONS -





BY APPOINTMENT TO
HER MAJESTY THE QUEEN
SINCE 1852 & HER GRACE
THE DUCHESS OF SURREY
SINCE 1870
SPINK & SONS LTD, LONDON



BY APPOINTMENT TO
HIS MAJESTY THE KING
SINCE 1852 & HER GRACE
THE DUCHESS OF SURREY
SINCE 1870
SPINK & SONS LTD, LONDON

SPINK

WHERE HISTORY IS VALUED

FOUNDED
1666

STAMPS COINS BANKNOTES MEDALS BONDS & SHARES AUTOGRAPHS BOOKS
WINE & SPIRITS HANDBAGS COLLECTIONS ADVISORY SERVICES SPECIAL COMMISSIONS

69 Southampton Row, Bloomsbury, London WC1B 4ET
www.spink.com