

STAMPS AND COVERS OF GREAT BRITAIN

Including the Windsor Collection



21 JANUARY 2021
LONDON

SPINK
WHERE HISTORY IS VALUED

A.

~~P. Anna~~

2½ Anna

2



STAMPS AND COVERS OF GREAT BRITAIN, including the Windsor Collection

Sale Venue:

The Royal Philatelic Society London

15 Abchurch Lane

2nd Floor

London

EC4N 7BW

tel +44 (0)20 7563 4005 fax +44 (0)20 7563 4037

Vat No: GB 791627108



Sale Details | Thursday 21 January 2021 at 10.00 a.m.

When sending commission bids or making enquiries,
this sale should be referred to as **CASSIDY - 21012**

Viewing of Lots | At RPSL (in line with government guidelines)
Monday 18 January 2021 at 10.00 a.m. – 5.00 p.m.
| Private viewing by appointment only

Live platform | **SPINK**  **LIVE**

Your Specialists for this Sale



Iain Murphy
imurphy@spink.com
+44 (0)20 7563 4060



Dominic Savastano
dsavastano@spink.com
+44 (0)20 7563 4094

Bids

Benedetta Fusco

Dora Szigeti

auctionteam@spink.com

+44 (0)20 7563 4108/4005

fax +44 (0)20 7563 4037

Technical Issues

Michael Lewis

support@spink.com

+44 (0)20 7563 4090/4089

Payment Enquiries

Veronica Morris

creditcontrol@spink.com

+44 (0)20 7563 4018

VAT Enquiries

John Winchcombe

jwinchcombe@spink.com

+44 (0)20 7563 4101

The Spink Environment Commitment: Paper from Sustainable Forests and Clean Ink

Spink has a long history of preserving not only collectables but our planet, too. We are proud to ensure that our policy of sustainability and conservation keeps up with Spink's growth, helping improve the environment for new generations of collectors.

We insist that our printers source all paper used in the production of Spink catalogues from FSC and/or PEFC suppliers and use non-hazardous inks. We also ask they hold the environmental standard ISO 14001.

Spink recycle all ecological material used on our premises and we encourage you to recycle your catalogue once you have finished with it.

Front Cover Illustration: 2220 Back Cover Illustration: 2374, 2405, 2517, 2081

Inside Front Cover Illustration: 2429, Inside Back Cover Illustration: 2335

Group Chairman and CEO

Olivier D. Stocker

Director

Tim Hirsch FRPSL

Chief Financial Officer

Alison Bennet

Head of EMEA

Mira Adusei-Poku

mpoku@spink.com

Specialists**Stamps**

Tim Hirsch FRPSL
 Iain Murphy
 David Parsons
 Nick Startup
 Neill Granger FRPSL
 Dominic Savastano
 Josh Barber
 Thomas Fell
 Axel Kendrick
 Ian Shapiro (Consultant)
 Guido Craveri (Consultant)
 Christopher Green
 George Yue (Consultant)
 Alan Ho

Historical Documents

Thomas Fell
 Neill Granger FRPSL
 Ian Shapiro (Consultant)

Books

Emma Howard
 Olivia Rae Marshall
 Nik von Uexkull

Client & Auction Management

Geoff Anandappa (Consultant)
 Dora Szigeti
 Nik von Uexkull
 Benedetta Fusco
 John Winchcombe
 Annie Sohail
 Samantha Lanevi
 Newton Tsang
 Katrina Chan

PR & Marketing

Rita Ariete
 Alzbeta Lanova

Chief Customer Officer

Rita Ariete

Head of Americas

Charles J Blane
 cblane@spink.com

Coins

Kelvin Cheung
 Henrik Berndt
 Richard Bishop
 Tim Robson
 Gregory Edmund
 Barbara Mears
 Kin Choi Cheung
 Paul Pei Po Chow
 Joseph Lam

Orders, Decorations & Medals

Marcus Budgen
 Harry Blackett-Ord

Special Commissions

Ian Copson
 Robert Wilde-Evans

Finance

Alison Bennet
 Sue Pui
 Marco Fiori
 Mina Bhagat
 Dennis Muriu
 Veronica Morris
 Nicholas Waring

Representatives For Australia

Michael R. Downey - mdowney@spink.com

Representative For Canada

Timothy J. Stewart - tstewart@spink.com

Representative For Japan

日本での弊社オークションへの出品・参加に関してのお問い合わせ

Alan Ho - japan@spink.com

Representative For South Africa

Andrew Kennedy - akennedy@spink.com

www.spink.com

@SpinkandSon

#Spink_Auctions

Spink_auctions

Spinkauctions

f Spink_auctions

**Spink UK**

69 Southampton Row
 Bloomsbury
 London
 WC1B 4ET
 Email:
 concierge@spink.com
 Tel: +44 (0)20 7563 4000
 Fax: +44 (0)20 7563 4066

Spink USA

145 W. 57th St.
 18th Floor
 New York, NY
 10019
 Email:
 usa@spink.com
 Tel: +1 646 941 8664
 Fax: +1 646 941 8686

Spink China

4/F and 5/F
 Hua Fu Commercial
 Building
 111 Queen's Road West
 Sheung Wan
 Hong Kong
 Email:
 china@spink.com
 Tel: +852 3952 3000
 Fax: +852 3952 3038

Spink Asia

Registered at:
 50 Raffles Place
 #17-01 Singapore Land
 Tower
 Singapore 048623
 Email:
 singapore@spink.com

Spink Switzerland

Via Livio 8
 6830 Chiasso
 Switzerland
 Email:
 switzerland@spink.com
 Tel: +41 91 911 62 00
 Fax: +41 91 922 20 52

ARRIVED
1871
JULY 14



Wormun

Winton

Extensions

Prospective buyers who wish to obtain an expert opinion on any lot (other than a mixed lot or lot containing undescribed stamps) are requested to notify Spink in writing not less than forty-eight hours before the time fixed for the commencement of the first session of the sale. If accepted by Spink, such request shall have the same effect as notice of an intention to question the authenticity of the lot for the purposes of Condition 3.4 of our Terms and Conditions for Buyers.

Notice of a request for an expert opinion must give the reason why such is required and specify the identity of the expert which will be subject to the agreement of Spink. All lots for which Certificates of Authenticity are desired must be submitted by Spink to the Expert Committee for choice.

Buyers are reminded that any lot(s) purchased “on extension” are subject to payment in accordance with our normal Terms & Conditions of Business. Settlement of any lots on extension should be made at the time of invoice payment. Overdue accounts are subject to interest charges.

Extensions requested on account of condition will not be accepted for expert opinions. Any Lot described as having faults or defects may not be returned should a certificate cite other faults or defects not included in the catalogue description.

Should Spink accept a request for an extension under the foregoing provisions of this paragraph, the fact may be stated by the Auctioneer from the rostrum prior to the sale of the lot.

It should be noted that any stamp accompanied by a Certificate of Authenticity is sold on the basis of that Certificate only and not on the basis of any other. No request for an extension will be accepted on such a stamp and the return of such a stamp will not be accepted.

Notes Concerning Descriptions

GUM: Original gum should be expected on unused stamps where appropriate, unless stated otherwise in the description:

mint	unused with original gum showing slight disturbance caused by previous hinge, which may be present in part or entirely removed
part original gum	unused with original gum significantly disturbed or heavily hinged
unmounted mint	original gum as issued
unused	without gum

COVERS: Should be expected to have minor nicks and tears usually from opening. Folded letters or covers normally have one or two file folds. These are not described unless of an exceptional nature and are not grounds for return.

entire letter	complete as sent with comments still attached to the outer address portion
entire	the outer portion of a folded letter but without contents
cover	an envelope

Symbols and Abbreviations

⊛	unmounted mint	d.s.	datestamp
★	unused	h.s.	handstamp
○	used	Ⓐ	air mail
□	block of four	Ⓢ	specimen
Ⓟ	block larger than four	Ⓒ	cancelled
☒	used on cover, entire letter, etc.	Ⓔ	essay
△	on piece	Ⓟ	proof
var.	variety, varieties	F	forgery
cat.	catalogue, catalogue value	R	reprint
c.d.s.	circular datestamp		

References

Catalogue values and numbers are those taken from the latest available edition.

The use of Gibbons Specialised catalogues in Great Britain sales is clearly indicated. Where other catalogues are used they are mentioned by name.

Buyers are reminded that payment must be made within seven days from the date of sale (condition 5.4.1), and interest will be added for overdue accounts (condition 5.10.1.1).

Please note charges for credit card payments (condition 5.4.3(iii)).

Buyers are reminded that if they default on a successful bid that details relating to such default may be shared with other auction houses and live bidding platforms (condition 5.11).

Note: All buyers must read the notes concerning requests for Extensions printed on page 4 of this catalogue.

The Terms of that notice must be complied with fully under all circumstances.

Please note that 'Spink Live' is running on an improved on-line bidding platform, which is accessible through www.spink.com and also as a SpinkLive app available for download from the App Store.

You can bid online free of charge.

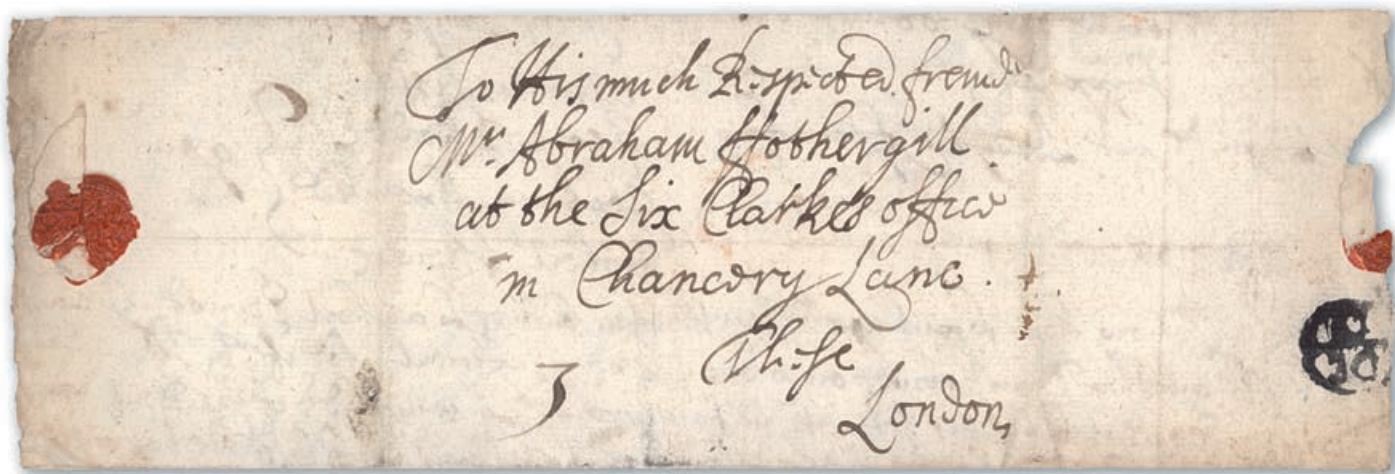
THURSDAY 21 JANUARY 2021

Commencing at 10.00 a.m.

GREAT BRITAIN

POSTAL HISTORY

- | | | |
|---------|---|------------|
| x2001 ☒ | 1357 (30 April), transfer document conceding Church land to Adomaro de Achell, knight. One copy was carried by private messenger to the records office in London, one for Sir Adomaro and one for the Church; fine intact red wax seal and in remarkably fine condition considering its great age | £800-1,000 |
| 2002 | 1656-57 " <i>A Collection of Acts and Ordinances of General Use, made in the Parliament</i> " compiled by Henry Scobell including the full text of the " <i>Act for Erecting and Setting of One General Post-Office</i> ", as well as others including " <i>Act - The Goods and Personal Estate of the late King, Queen and Prince to be sold, all re-bound in style by Powley of Norwich with original endpapers retained. A fascinating lot</i> " | £700-800 |



2002A

- | | | |
|----------|---|--------------|
| x2002A ☒ | 1666 (17 Dec.) entire letter to Chancery Lane, on reverse a good strike of the extremely rare first type Bishop mark, the entire very clearly dated and signed; fine. A rare survivor, written shortly after the Great Fire of London. The Post Office was burnt down during the fire and few such letters were sent at this time. It is thought that only five have survived | £1,500-2,000 |
|----------|---|--------------|

Great Britain, Postal History - *contd.*



2003

x2003 ☒

1683 (17 May) entire letter written by "Robert Humfreys" and addressed *"This for Mr. John Fisher at his house in the Broad Sanctuary over against Westm(inste)r Abbey, King streete end"*, on reverse a fine strike of the very rare first type Government "Dockwra" mark "PAYD/PENY/POST/T" of the Temple office with a Westminster office "W/Mor/8" transit time mark and a manuscript "4L" (indicating that the letter was handled at 4pm by the Penny Post's Lime Street Office) alongside. The letter concerns the addressee's "sister child" and her debts to Sir William Bowles; fine. A significant Great Britain Postal History rarity. Only about twenty-five examples of the first type Dockwra are recorded with the vast majority being in archives. Photo

PROVENANCE:

Peter Thompson, March 2012

£8,000-10,000

- | | | |
|--------|--|--------------|
| 2004 ☒ | 1694 entire, addressed to <i>"The Honble Henry Pagett Esq., at West Drayton, near Uxbridge"</i> , on reverse a superb uncracked red wax seal and an exceptional second type "PENY/POST/PAYD/W/MON" Dockwra handstamp. Rare in this quality. Photo
<i>Note: Henry Paget, First Earl of Uxbridge, was elected M.P. for Staffordshire in the years between 1695 and 1711, he was later a Lord of the Treasury and a Privy Counsellor</i> | £300-400 |
| 2005 | 1710 Postal Order Act of Parliament, printed 1745 over thirty pages, titled <i>"An Act of establishing a General Post Office for all Her Majesty's Dominions, and for settling a Weekly Sum out of the Revenues thereof, for the Service of the War, and other Her Majesty's Occasions"</i> detailing rates and postal regulations. An important document. | £350-400 |
| 2006 | 1711, <i>"An Abstract of the Several Acts Following, Passed Anno Nono Annae Reginae"</i> , comprising the <i>"Act for Establishing a General Post-Office for all her Majesties Dominions"</i> which provides postage rates including West Indies, North America, Europe, the Mediterranean etc. | £500-600 |
| 2007 ☒ | 1729-1944 a remarkable collection of over 130 covers, many with enclosures, covering a broad range of subjects, from pre-stamp to stamped covers, markings including Missent, Too Late, Paid At, Undated circles, Penny Posts, Fifth Clause, Uniform Penny Post, cancellations with distinctive Maltese Cross of Coventry, sideways duplex, printed envelopes with Mulready, 1d. pink, embossed seals, Surface printed issues, Registered with multiple franking, etc., mixed condition but an interesting group with many very fine | £1,500-2,000 |

Photo for lot 2004 appears on page 9

HISTORICAL DOCUMENTS, POSTAL HISTORY AND EPHEMERA



**1651 letter signed "O Cromwell"
by Oliver Cromwell**

Sold in our most recent auction
for £4,800

Accepting items
of historical significance
for our
2021 Auctions now

Contact your specialist today
for further details

Thomas Fell

Tel.: +44 (0)20 7563 4076

Email: tfell@spink.com

Great Britain, Postal History - *contd.*

2008 ☒	1785-97 comprising 70+ entires, covers, fronts and some postal stationery including 1785 entire from Shrewsbury to Lichfield bearing two line 'SHREWS / BURRY', a little soiled, 1840 (2 July) entire to Aberdeen bearing 1d. black plate Ia, MJ, very worn impression, a little cut into and cancelled by Red Maltese Cross, plate Ib, MK, tied to wrapper to Greenock, plate Ib, RD, with tight to large margins, showing portion of adjoining stamp at lower left, tied to entire by red Maltese Cross, plate VIII, SD, tied by bright red Maltese Cross to front to Liverpool, a little cut into, 1841 2d. blue tied to undated front to Shrewsbury stamped 'BORE / TO / PAY', 1843 wrapper to The Marquis of Hastings at Donington Castle bearing 1841 plate 31(?) 1d. red strip of four KG-KJ, each a little cut into at the top and cancelled by black Maltese Cross, various penny red imperf. singles on entires, 1869 entire to Leipzig bearing 1864 2d. blue (3) and various used and unused postal stationery.	£700-800
2009 ☒	1787-1836 an attractive group of ten entires from Battle, including 1787 entire letter with rare magenta "57 BATTLE" mileage, later with undated circles, "BATTLE/57", Free, etc., good to fine	£180-200
2010 ☒	1798 (23 June) entire letter to Dublin with red curved, framed "PAID" with Paid datestamp and "COLERAINE" in the same colour alongside; light filing fold through the datestamp, fine and rare	£140-160
2011 ☒	1802-1805 a small group of entires (6) and wrapper from the Napoleonic War period including 1802 from Paris to North Wales pre-paid 6d. for conveyance to Calais and charged 1/6d. on receipt in London with "P.PAYE PARIS handstamp in red, "FOREIGN OFFICE" and other c.ds., two 1802 pre-paid packet service entires from London to France and two via Hamburg, one being conveyed privately, both bearing "R.4" or "R.4 HAMBURG" rayon handstamps. A good group	£400-500
2012 ☒	1809 entire to London with red framed Manchester "PENNY P. UNPAID", 1832 entire with fine "CRAMOND/PENNY POST", 1839 entire to Halifax with (on reverse, across flap) the rare black "SALFORD/MANCHESTER", 1854 entire to Coventry franked 1d. Stars and with "MISSENT TO BIRMINGHAM" alongside; fine and an attractive quartet	£120-140
2013 ☒	1814 (23 Oct.) a letter of authority from Robert Banks Jenkinson (Lord Liverpool, Prime Minister) to commission audit to pass warrants in accounts of the Receiver General of the Post Office with only the Earl of Chester's signature, in the absence of the Earl of Clancarty, His Majesty's joint Postmaster General; signed " <i>Liverpool</i> ", <i>N. Vansittart</i> " (Chancellor of the Exchequer) and " <i>Lowther</i> " (Third Earl of Lonsdale); filing folds; fine. An important postal history document in clean condition	£200-250
2014 ☒	1815-39 Scottish additional Halfpenny Mail tax, seventy-six entires with a range of different types, most well struck. Generally fair to fine; also " <i>The Scottish Additional Halfpenny Mail Tax</i> " booklet by Hodson and Sedgewick.	£200-300
2015 ☒	1815 (15 March) long entire letter from a merchant in London to Lisbon, making important reference to peace with America following the war of 1812, which ended with the treaty of Ghent, signed in 1814, " <i>....we have now got the American Peace ratified.....</i> "; filing notes on the front. A rare letter	£150-200
2016 ☒	1826 (19 May) entire letter to Norwich, endorsed <i>Post Paid</i> , with red Tombstone datestamp and framed "Missent to/London", also 1843 (25 April) entire letter to Daventry (stamp missing) with superb script " <i>Missent/to/London</i> "; attractive and scarce	£120-150
2017 ☒	1826 (14 Sept.) entire letter to Somersetshire with, on reverse and opening well for display, a fine and upright strike of the Jersey scroll (S.G. 17/4); a scarce and appealing entire. Photo	£200-250
2018 ☒	1827-1920, a useful group of sixty-four items, chiefly covers with an emphasis on Ireland, including scarcer Postal History with Town "Paid" marks together with straight lines, undated circles, Mileages in different colours, 1840 1d. black used within Ireland, Postal Stationery, imperf. and perf. 1d. reds, cancellations with Maltese Cross, numerals, later issues, etc., mixed condition with very fine included	£400-500



2004



2017



2022



Ex 2040



2035



2052



2051



2055

Great Britain, Postal History - *contd.*

2019 ☒	1827 (25 June) entire to Dublin with unrecorded blue "BALLY CLARE P. PAID" and red datestamp alongside; stained at left (affecting the Town marking); an important Irish rarity	£100-120
2020 ☒	1827 entire with framed Belfast "P.PAID" and with Belfast mileage c.d.s. alongside, 1829 entire with red "PORTAFERRY/101" mileage mark and red curved "POST PAID", 1834 entire with Hollywood "POST PAID", all to the same addressee, the Secretary of the Masonic Grand Lodge in Dublin. A scarce group	£150-200
2021 ☒	1829-61, four entire letters with Missent markings, comprising 1820 with "Missent to DORCHESTER", 1832 with "MISSENT/TO PERTH", 1839 with "Missent to/Kingston", 1861 with "MISSENT TO/WORCESTER"; good to fine	£250-300
2022 ☒	1829 (6 May) Medical reference return form (showing a fine engraving of the Manchester coat of arms on the interior), with a good strike of the red framed " <i>Manchester/Penny Post</i> " handstamp The only recorded example in red; fine. Photo	£200-250
2023 ☒	1837 (7 Feb.) entire to London with superb strikes of the "PAID AT/LAUNCESTON" and framed " <i>Launceston/Penny Post</i> " both in blue , red London Tombstone arrival marking; fine and a spectacular entire	£150-200
2024 ☒	1837, long, cross written entire to Halifax, with fine red framed "MIS-SENT/TO LIVERPOOL" on the front, on reverse undated Worksop in circle (across flap); almost imperceptible filing fold crosses the Missent marking; fine and rare	£120-150
2025 ☒	1839 (8 May) entire letter to Buckinghamshire with superb red double oval "MISSENT/TO/BIRMINGHAM", red and blue datestamps on the reverse; rare and stunning	£180-200
2026 ☒	1839-49, three entires or large part entires with Bolton markings, comprising 1840 (9 Jan.) with manuscript "4" (last day of official useage), 1847 with bold black "2" in circle, 1849 with red "PAID/1" in circle; fine to superb	£100-120
2027 ☒	1840-1920 a group of mostly postcards with some entires and covers (70+ in total) with a focus on Scotland, mainly Coldstream etc. and the North East including 1840 wrapper from Coldstream to Edinburgh bearing "COLDSTREAM / JN 10 / 1840 boxed c.d.s. in red, twelve KEVII postcards with various Durham County skeleton postmarks including earliest known usages, only recorded days of usage etc. A good group	£150-200
2028 ☒	1841-65, selection comprising 1841 1d. on printed entire, 1841 2d. Plate 3 with small to huge margins and profile clear cancellation, another on entire to Ashby-de-la-Zouche, 1851 and 18534 entires franked imperf. or perf. 1d, and with different London "TOO LATE" markings 1854 entire to Sutton Coldfield franked 1d. Stars with Birmingham Spoon cancellation, 1867 envelope to Manchester franked 1f. with Edinburgh Brunswick Star cancellation, 1865 envelope to Manchester franked 1d. with "POSTED SINCE 8.30 LAST NIGHT" Edinburgh duplex cancellation, 1867 envelope to France franked 1d. with red "NW/R.P.O./M" in circle alongside; good to fine. An interesting group (9 items)	£120-140
2029 ☒	1845 (20 Feb.) envelope franked 1841-54 1d. Plate 52, ID, large margins and showing portions of adjoining stamps on three sides, with enclosure, sent by the eminent British Statesman (and later Prime Minister) William Ewart Gladstone to the Rev. W.A. Butler, Professor of Moral Philosophy, University of Dublin; Gladstone cordially thanks Butler " <i>for the able statement on my behalf which you have addressed to the Dublin Evening Mail</i> " and with interesting comments regarding the Political and Religious situation in Ireland at the time. A rare, important and immaculate letter	£400-500
2030 △	1849 (26 June) Registered Letter receipt label, attached to a legal document, blue Wymondham c.d.s.; some staining but rare	£100-130



2031

- | | | |
|--------|---|--------------|
| 2031 ☒ | 1852 (21 March) 2d. blue postal stationery envelope (Huggins EP6) additionally franked 1841-53 1d. red-brown Plate 42, QK, addressed to Haverfordwest, blue datestamps of Aberystwith and Haverfordwest on the reverse; fine and an extremely rare combination. Only four examples of the 2d. postal stationery envelope uprated by a 1d. are recorded in "Great Britain Victorian mixed franking covers" by Ray Simpson and Karl Louis. This is the latest recorded and the only Welsh usage. R.P.S. Certificate (2010). Photo | £2,000-2,500 |
| 2032 ☒ | 1854 (24 Sept), entire letter from Ceylon to Exeter, endorsed <i>Via Marseilles</i> and "Private", with framed "MISSENT/TO/GLASGOW", on reverse "PUSILAR/POST" datestamp (with date completed in manuscript), Glasgow and Exeter datestamps on the reverse; fine and unusual | £100-150 |
| 2033 ☒ | 1855 (1 March) entire letter (stamp missing) to London, the letter, from a Mr. Burdett to Mr. Key with interesting contents concerning the Crimea, mentioning the Foreign Secretary, Lord Clarendon, a visit to France and property in Jamaica, and the "impossibility of competing with slave-grown sugar", etc.; portion torn away from the front and replaced | £100-120 |
| 2034 ☒ | 1860 (24 Feb.) envelope to Walsall, franked 1d. Stars, with fine "407" sideways duplex cancellation of the Isle of Man, Liverpool and Walsall datestamps on reverse; a fine and uncreased envelope | £120-150 |
| 2035 | 1860 (c.) carte de visite format photograph of William Mulready (60x90mm.) mounted on card (63x100mm.) with imprint of "Cundall, Downes & Co. Photographers to the Queen" on reverse; fine and a powerful image of the famous artist. Photo | £500-600 |
| 2036 ☒ | 1861 (3 May) envelope franked 1d., on reverse tiny circular "EC/B" examiners mark (Alcock figure 1844), 1871 (11 Jan.) mourning envelope franked 1d. (at lower left) with scarce Kingston "2" handstamp alongside, endorsed on the reverse <i>"If left to be forwarded immediately"</i> , 1878 (11 July) envelope to Westphalia franked ½d. and 1d. (2); fine and an unusual trio | £100-120 |
| 2037 ☒ | 1861 (4 June) envelope to Market Harborough franked 1d. Stars with "564" barred oval cancellation with superb black <i>"Too Late"</i> (previously only recorded in blue) alongside, Newport Pagnel and Rugby datestamps on reverse; fine. A delightful new discovery | £120-150 |
| 2038 ☒ | 1866 (19 Sept.) envelope, franked 1d. Plate 94, cancelled by a superb strike of the Berwick Station duplex, addressed to Right Hon. B. Disraeli M.P. at Grosvenor Gate, sent by Lord Echo, Francis Charteris, 10th. Earl of Wemyss; the envelope with small closed tear extending to the front; fine | £100-120 |

Photo for lot 2035 appears on page 9

Great Britain, Postal History - *contd.*

- 2040 ☒ 1873 (6 March) printed wrapper to the Secretary of Great Western Railway Company, Paddington Station London, franked 1d. Plate 156 and tied by a clear strike of the rare Oxford "613" (error for 603) duplex cancellation, red London arrival c.d.s. or the reverse, very fine, and with another cover showing a superb strike of the correct numeral cancellation. Photo £200-250
- Ship Letters**
- 2041 ☒ 1821-38 entire letters (11) to Cape Town, variously rated and showing a variety of London Ship Letter datestamps (S46-S49), the last with Robertson S.51 and framed "TO PAY" struck on arrival £300-400
- 2042 ☒ 1830 (25 Mar.) soldier's entire letter from the Castle, Cape Town to Ireland, headed "*From Saml Cummins Private Sol. 98 Rg*" and countersigned by the Commanding Officer, no evidence of any Cape or U.K. charges, showing Crowned "POST OFFICE/GENERAL/CAPE TOWN" DLS3 datestamp and, on reverse, light "INDIA LETTER/FALMOUTH" (In1) in red and arrival datestamp (22.6); minor faults on flap otherwise sound and unusual without signs of charges £250-350
- 2043 ☒ 1850 entire letter and 1851 envelopes (2) from Natal ex the *A.K. Murray* correspondence to his father in Scotland and all rated "8", the first (small imperfections) probably carried by the *Rosebud* to Cape Town with "GENERAL POST OFFICE/Crown/CAPE TOWN" ULS1, and then by the *Gloriana* to Falmouth, the envelopes (both with contents) both directed via Cape Town though without marks of the city and with U.K. arrival datestamps on reverse, the first probably carried by HMS *Birkenhead* from Simons Town after the *Sir Robert Peel* was late arriving, the Governor sending an urgent request for aid in a war on the eastern frontier. An interesting group; transcripts of the last two contents included, Also 1850 (June) entire from the Rev. Ridsdale, Wesleyan Missionary at the Cape to London and probably carried on the *John Line* en route from Madras, showing "GENERAL POST OFFICE/Crown/CAPE TOWN" USL1 and London "SHIP LETTER" in red £150-250
- 2044 ☒ 1851 (Jan.) entire from London to Cape Town, returned to sender for payment of 1/- and showing two different "*Returned for Postage*" handstamps, one on reverse; 1851 (July) entire letter (imperfections) from London to Mauritius, redirected "*Gone to Cape*", sent to Cape Town and returned from there to London, Mauritius, Cape Town and London marks all on face; 1851 (Dec.) double rate entire letter and single rate envelope both carried on the fourth voyage of the *Bosphorus*, and 1852 (May) envelope from London "*Per RMS Propontis* (5th. voyage) to Cape Town rated "1/-" for U.K. posting and "*4d*" on delivery at Cape Town £100-150
- 2045 ☒ 1852 (14 June) envelope from Oxford to Lieut. T.H. Bramston of the Rifle Brigade at Cape of Good Hope, bearing embossed 1/- green with good to large margins, placed sideways and clearly cancelled "603", despatch and London datestamps on reverse, carried by the *Harbinger* from Plymouth and arriving at Cape Town on 21 August, then forwarded to addressee on the Eastern Frontier where the regiment was engaged; envelope with faults though an unusual embossed 1/- usage £150-250
- 2046 ☒ 1857-62 envelopes (5) to Bushmans River, Durban, Ladysmith and Pietermaritzburg (2), four bearing 6d. lilac and one with manuscript "*P6*" in red alongside Crown datestamp in blue, three carried on the *Dane* and subsequently on the *Albatross* or the *Waldenstein*, and two carried on the *Norman* and subsequently both on the *Waldenstein* £100-150
- 2047 ☒ 1863 (Dec.) and 1864 (July) envelopes ex the same correspondence from Gosport to Durban, the first by the third sailing of the *Saxon* and then the *Norman* to Durban, bearing 6d. and charged as an underpaid packet letter, showing "1/-" handstamp amended to "1/6" and with "2d" accountancy handstamp in red, the second by the fifth outward passage of the *Briton* under the second contract, a double letter prepaid at the 6d. rate with 6d. lilac, charged "2/6" and with "4" credited to Natal. An interesting and unusual pair £80-120
- 2048 ☒ 1866 (May-June) envelopes (3, two with minor imperfections) ex the same correspondence to Robert Hamond on board H.M.S. *Searus* at Cape Town, each sent at a privileged rate of 6d. for ½ ounce applied to single letters addressed to naval officers serving overseas between 1 June 1857 and 31 December 1869; and 1868 (Jan.) entire from London to a member of the 9th. Regiment at Cape Town franked at 6d. when the privilege rate previously applicable to single letters addressed to naval officers was extended to army officers serving in the colonies £100-150

Photo for lot 2040 appears on page 9

- 2049 ☒ 1877-96 selection to Natal, comprising 1877 entire to Pietermaritzburg with 6d. grey, 1883 (faults) and 1884 envelopes to Umhlanga and Pietermaritzburg each bearing 6d. on 3d., 1884 and 1886 envelopes to Pietermaritzburg and Durban both bearing 6d. green and 1896 envelope to Ladysmith franked at 2½d., the 1884 items both addressed to Sir Theophilus Shepstone, KCMG, responsible for the annexation of the Transvaal. An interesting group £100-150
- 2050 ☒ 1863 (11 Jan.) incoming envelope from Durban to Yorkshire, bearing 3d. blue pair (left-hand stamp defective) lightly cancelled and with despatch datestamp at left and Cape Packet Devonport datestamp at foot, accountancy mark omitted; carried by the *L'Imperatrice Eugenie* as far as Port Elizabeth then overland to Cape Town and by the *Dane* on her thirteenth voyage to Devonport £100-120

POSTAL STATIONERY

- 2051 ☒ 1844 (16 Feb.) 1d. pink postal stationery envelope, cancelled on face by Bridport c.d.s., addressed to Deptford, fine and rare. Photo £250-300
- 2052 ☒ 1845 (16 April), 2d. blue postal stationery envelope, addressed to London, unclear barred oval ("493" of Maidstone) cancellation which leaves the Queen's profile clear, datestamps on reverse. Scarce. Photo £220-250
- 2053 ☒ 1851 (31 Dec.) 1d. pink postal stationery envelope to Newbury with **blue** "424" barred oval cancellation of Luton, transit and arrival datestamps on the reverse; small central stain, fine and scarce £100-120



2054

- 2054 ☒ 1866 (3 Dec.) 2d. blue postal stationery envelope addressed to Oxford, additionally franked 1d. with London "45" "twin" barred oval cancellations, addressed to Oxford, small "L&E/RPO" handstamp on the front; fine and an extremely rare combination. No example recorded in "Great Britain Victorian mixed franking covers" by Ray Simpson and Karl Louis. Photo £800-1,000
- 2055 ☒ 1875 (10 June) 1d. pink postal stationery envelope, addressed to Hamburg and additionally franked 1d. Plate 158 (2) and 3d. rose plate 16, London "91" cancellations, forwarded on arrival and dated markings on reverse; fine and a most unusual combination £200-250

Photo for lot 2055 appears on page 9

THE REMARKABLE COVER ADDRESSED TO QUEEN VICTORIA

**“A quite exceptional combination of
history and philatelic rarity, making this piece highly desirable”**

This beautiful 1860 (27 Aug) envelope from Concord in New Hampshire, America to “Victoria Queen, Great Britain” bearing 1857-1861 issue two 1c type V, two 3c type II and 10c type V pair + two single; a wonderful three colour franking. A quite exceptional combination of history and philatelic rarity, making this piece highly desirable. During 1860 Queen Victoria was represented by Albert Edward, the Prince of Wales, in the undertaking of a royal tour of Canada. The Queen herself remained in the United Kingdom to attend to domestic affairs, this being a long voyage. From his arrival in St John’s, Newfoundland on 2th July, on to New Brunswick, Nova Scotia, Prince Edward Island, and finally the Province of Canada in August, the Prince was treated to gifts such as a Newfoundland dog and thrown grand balls, the likes of which constituted what would now be termed a true ‘royal reception’. the tone and format for all royal visits to come. The Prince of Wales would also go on to visit America at points on his visit. This extraordinary cover addressed to Queen Victoria harkens back to this important royal visit. It is possible that the contents, no longer present, reported details of the Prince of Wales’ progress to the Queen.



2056

x2056 ☒

1860 (27 Aug.) cover from Concord addressed to "*Victoria, Queen, Great Britain*", bearing United States 1857-1861 issue 1c. Type V (2), 3c. Type II (2) and 10c. Type V pair and two singles all cancelled by barred circle handstamps and with London d.s. on reverse; a beautiful three colour franking and a highly desirable item of both historic and philatelic importance. Photo

PROVENANCE:

'The Ryohei Ishikawa Collection', Christie's 1993 (28 September)
Purchased by Drs. Edward & Joanne Dauer from the above sale

£15,000-20,000

1840 MULREADY

May Dates



2057

2057 ☒

May 6, 1d. A1 to Chester, with red Maltese Cross cancellation and clear 'MY - 6 / 1840' d.s. on reverse. Some soiling and tears, reinforced along folds with stamp hinges. Rare first official day of usage. Philatelic Foundation Certificate (1974). S.G. ME1, £18,000. Photo

£800-1,000



2058

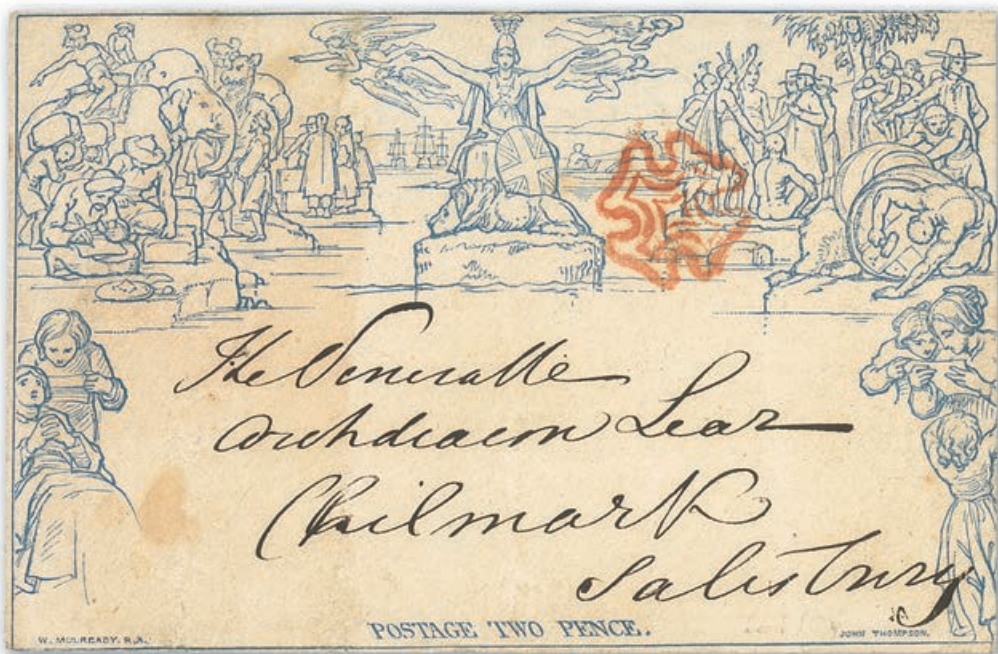
2058 ☒

May 7, 1d. lettersheet, A50, redirected from Ryelands to Torquay with light red Maltese Cross cancellation, manuscript "1" and and Hereford c.d.s. of May 7 1840 on the front; clean and uncreased. A rare second day of official use. A new discovery, not recorded in "May Dates" by M. Jackson. Photo

£800-1,000

Great Britain, 1840 Mulready, May Dates - *contd.*

- | | | |
|--------|--|----------|
| 2059 ☒ | <p>May 8, 1d. A150, to a Gentleman, cancelled by red Maltese Cross and with boxed 'PD / M 8 / 1840' d.s. on reverse. Some light marking and foxing, otherwise presentable and an early date. S.G. ME2, £2,600. Photo</p> | £300-350 |
| 2060 ☒ | <p>May 9, 1d. A19 to Devonport, cancelled by red Maltese Cross and with 'G / MY - 9 / 1840' d.s. on reverse. Some soiling and pressed out folds, scarce. Also A65, 1840 (7 May) to Halifax, cancelled by red Maltese Cross. With soiling and foxing to edges. S.G. ME1 (2), £5,200. Photo</p> | £400-500 |
| 2061 ☒ | <p>May 9, 1d. envelope, A137, used locally in London and cancelled by a superb strike of brown-red Maltese Cross and bearing on the flap, which opens well for display, a very good strike of the London boxed datestamp with champhered corners and "T.P./Chief Office" in black; the wax seal is complete on the reverse. Fresh and fine. A very good early May date.</p> | £500-600 |



2062

- | | | |
|--------|--|------------|
| 2062 ☒ | <p>May 11, 2d. letter sheet, A202, to Salisbury cancelled by red Maltese Cross, to the right of Britannia, light folds throughout and some marking to a portion, otherwise good and rare. S.G. ME4, from £17,000. Photo</p> | £800-1,000 |
|--------|--|------------|



2059



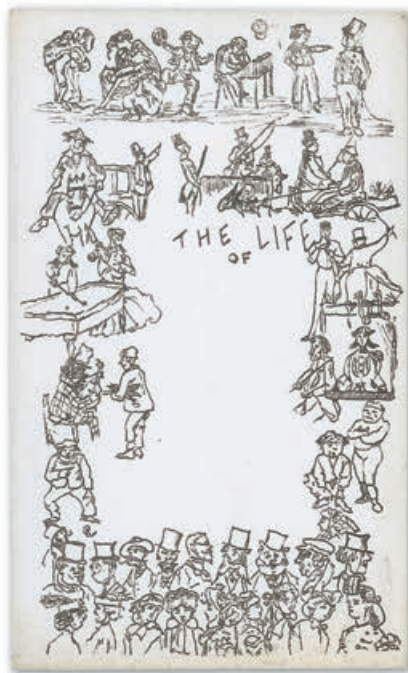
Ex 2060



2066



2067



Ex 2074



2076



2077

Great Britain, 1840 Mulready, May Dates - *contd.*



2063

2063 ☒

May 20 2d. letter sheet from Stafford to London cancelled by faded Maltese Cross with 'STAFFORD / MY 20 / 1840' c.d.s and 21 May d.s. on reverse. Fold through middle, reinforced on the reverse and light marking. A scarce item. S.G. ME3, from £17,000. Photo

£800-1,000



2064

2064 ☒

May 23, 1d. A18, from Leicester to London, bearing 1840 1d. black, Plate II: HE, cancelled by red Maltese Cross with another cancelling the letter sheet. Some light soiling and the 1d. folded with the sheet. Scarce. Philatelic Expertising (G.B.) Certificate (1996). S.G. ME1, £15,000. Photo

£1,000-1,500

One Penny Letter Sheets

2065 ☒

Stereo obscured, dated 1841 (24 April), bold black Maltese Cross cancellation, London datestamp on reverse; fine and uncreased

£150-200

2066 ☒

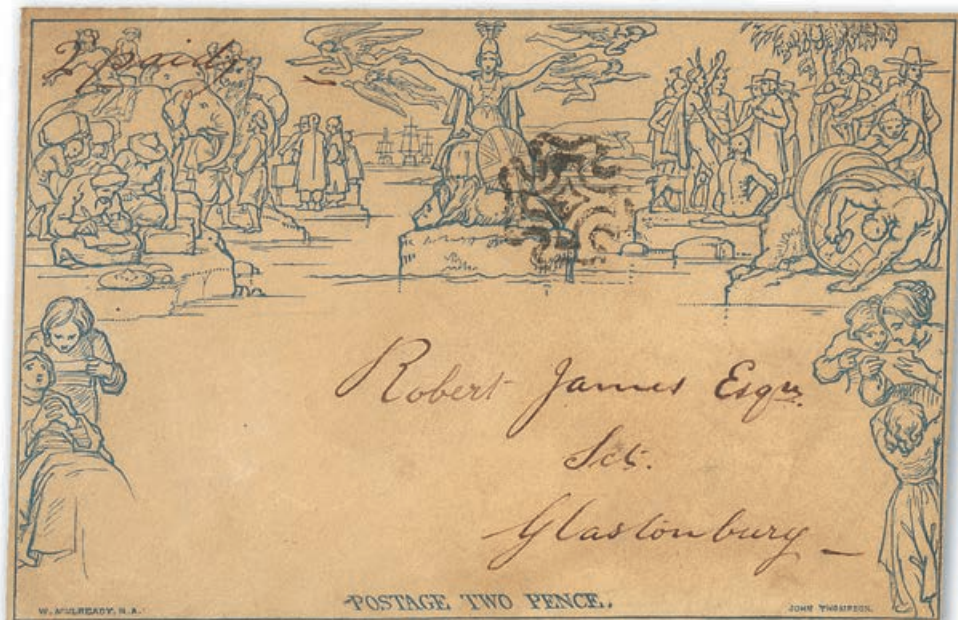
A26, dated 1 Sept. 1843 to Chippenham with fine number "9" in Maltese Cross cancellation and with "Bishopsgate St. Within" alongside; some peripheral imperfections but attractive appearance. Specialised £3,000. Photo

£500-600

Photo for lot 2066 appears on page 17

One Penny Envelope

- 2067 ☒ A133 from Robert Peel in London to Atherstone, showing “*T.P.Charles St. West*” handstamp in blue, uprated with 1840 1d. Plate IV, SA with close to large margins, tied by red Maltese Cross and signed “*Robert Peel*” at foot. Unclear d.s. on reverse with clear wax crest seal of the Peel family in red on reverse. Envelope with pressed folds and a little soiled, however a rare and interesting item. Mike Jackson Certificate (2020). Photo
£400-500
Note: Sir Robert Peel, Prime Minister 1834-35 and 1835-41.
- 2068 ☒ A collection of 1d. letter sheets (7) and envelopes (10). Letter sheets ranging from A5-A76 and dates from **1840 (10 May)**-(29 May); envelopes ranging from A144-A173 and dates 1840 (11 May)-(27 May). Mixed condition throughout, but a good group. S.G. ME1-ME2, £35,000+
£2,000-3,000
- 2069 ☒ A small collection with 1d. wrappers A15 cancelled by black Maltese Cross to Aberdeen. A64 cancelled by dull red Maltese Cross to Dublin (poor), A233 cancelled by bright orange-red Maltese Cross used locally in London, A246 (front and one flap cancelled by black Maltese Cross; also 2d. wrapper a92 good unused and a rather tatty facsimile envelope. Condition is mixed. (6 covers)
£100-140



2070

Two Pence Envelopes

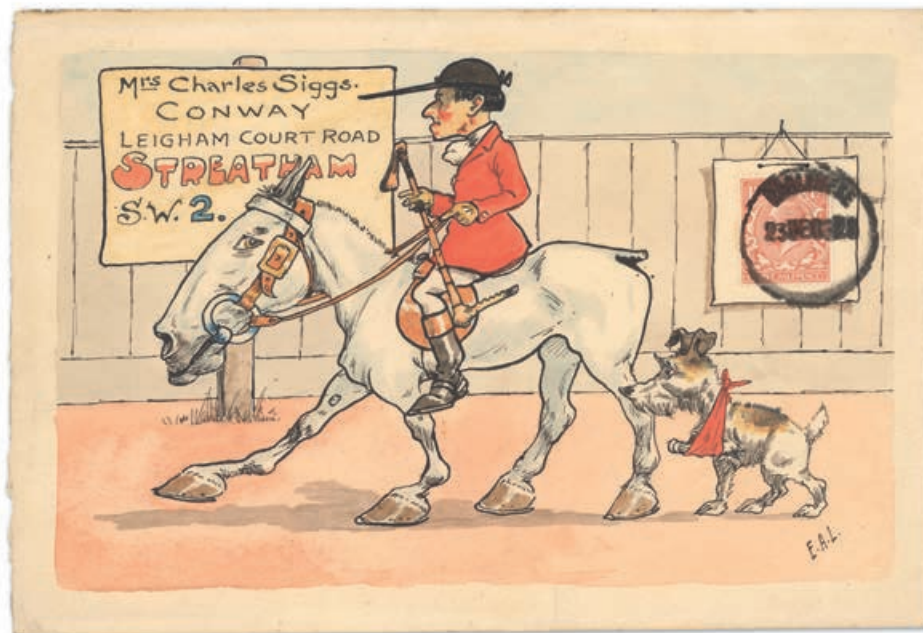
- 2070 ☒ A195, dated 2 Feb. 1841, addressed to Glastonbury, endorsed “2 paid” at upper left, upright black Maltese Cross slightly to the right of Britannia, toned but extremely rare being the earliest recorded use of the black Cross on a 2d. Mulready. Not recorded in Rockoff & Jackson. Photo
£1,000-1,200

ILLUSTRATED ENVELOPES

- 2071 ☒ A group of three unused envelopes (2) and letter sheet, including ‘Fores’s Comic Envelopes No. 1’ caricature, and two printed envelope designs, one reading ‘GOD HATH MADE OF ONE BLOOD ALL NATIONS OF MEN’ printed by Ackermann & Co., the other depicting a steam boat carrying mail reading ‘THE WORLD WANT AND SHOULD BE BRITAIN’S BOOM / OCEAN PENNY POSTAGE’
£200-250

Photos for lots 2067 appears on page 17

Great Britain, Illustrated Envelopes - *contd.*



Ex 2072

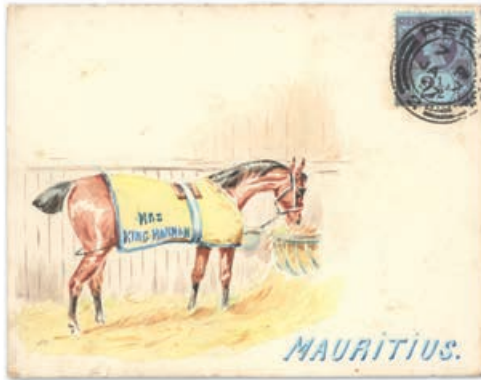
2072 ☒

A spectacular group (16) of hand-painted envelopes, formerly part of the Dr. Paul Ramsay collection, the majority with an equestrian or hunting theme including 1842 (10 July) handpainted Hunting scene "Going! Going! Gone for 1 Penny", bearing 1841-53 1d. tied by a black Maltese Cross cancellation, from the Reverend L. Lorraine Smith to London, thought to be the earliest recorded hand-painted envelope along with a further three examples illustrated by Rev. L. Lorraine Smith; three simply stunning and meticulously painted envelopes from the Miss. Nora Martin correspondence; five envelopes part of the Hugh Rose - King-Harman correspondence including 1897 (7 Jan.) "The Thoroughbred" and 1897 (22 Jan.) "Indian Blackbuck" both to the Hon. Mrs. King-Harman while in Mauritius and 1897 (29 June) "Spanish Cavalry" and (5 July) "Indian Cavalry" to the same recipient whilst in Gibraltar and London respectively; 1923 (23 Dec.) large envelope "The Huntsman" used within London and initialled *E.A.L.* at lower right, etc.; a magnificent assembly of exhibition calibre

PROVENANCE:

Dr. Paul Ramsay, May 2018

£16,000-18,000



Great Britain, Illustrated Envelopes - *contd.*



2073

- | | | |
|--|---|--------------|
| 2073 ☒ | 1904 (7 March) "The Sphinx", large envelope (250x370mm.) part of the Hugh Rose correspondence to Prince Edward of Wales at York House, in black and white, from Edinburgh and franked Edward 1d.; superb | £4,000-5,000 |
| PROVENANCE:
Christie's sale, December 1988
Dr. Paul Ramsay, May 2018 | | |
| 2074 ☒ | Two unused black and white envelopes, "Horses and Rabbits" and "The Life of Hats"; clearly by the same Artist; fine and unrecorded designs. Photo | £200-250 |
| 2075 ☒ | Three unused black and white envelopes, "First Class Ticket", "Cheeky Monkey" and "The Heavenly Goat", unrecorded designs, some stains on the last two | £150-200 |
| 2076 ☒ | 1873 (19 April), a beautifully handpainted watercolour depicting flowers, addressed to Miss Plunkett at Dr. Lockes, Clapham Common, franked 1d. Pate 117; superb. Photo | £800-1,000 |
| 2077 ☒ | 1897 (16 June) Queen Victoria Diamond Jubilee embossed multi-coloured postcard, addressed to Cornwall, franked 1887 ½d. vermilion, taxed 1d. on arrival; fine and most appealing. Rare. Photo | £300-350 |
| 2078 ☒ | Six unused black and white envelopes, "The Trafalgar Square Plinth", "The Lion Painter", "Proverbial Philosophy by Banting", "Matrimony", "Such Rubbish as may be shot here" and "Queens Head Tavern", each with the Artists monogram "EPL"; fine and all previously unrecorded types. A remarkable group | £600-700 |

Photos appear on page 17

WWW.SPINK.COM

LINE ENGRAVED PROOFS AND ESSAYS



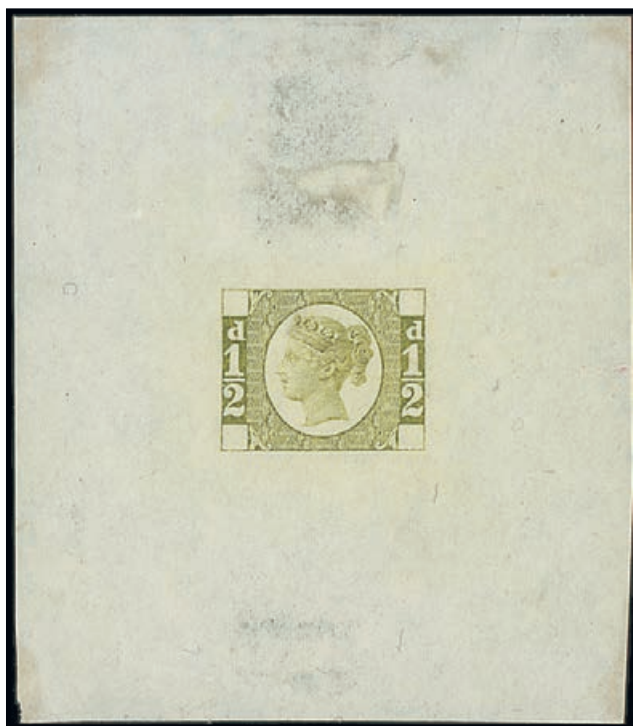
2079

2079 ㊦

1865 "Royal" Reprint 1d. in black with watermark inverted, Die II, Plate 66: LA-MB in a left margin block of four showing the margin inscription, full original gum; good to large even margins; there is a tiny scissor cut between the top two, a light horizontal bend at foot and a few trivial wrinkles. A fine and impressive multiple. Specialised DP35a, £14,000+. Photo

£6,000-8,000

Great Britain, Line Engraved Proofs and Essays - *contd.*



2080

2080 ©

1871 Ormond Hill Die Proof 1/2d. in pale sage-green on thin wove paper (54x62mm); there is a slight mark at top caused by the glue from an old hinge and some pencil notes on the reverse. Fine. S.G. DP64 (b), £37,000. Photo

£5,000-8,000

PROVENANCE:

Colonel Bates, December 1934

Prince Consort Essays



2081

2081 ⑥

The unfinished imperforate proof, printed in dull grey-blue, with full original gum; some gum wrinkling or creasing with a couple of trivial edge imperfections. A fine example of this very rare essay. Specialised DP71 (1), £35,000. Photo

£10,000-15,000

PROVENANCE:
Chartwell, June 2011

Note: These essays were prepared by Henry Archer in connection with his offer to produce surface printed postage stamps and perforate them at more favorable terms than the existing contract with Perkins, Bacon. Edwin Hill, the supervisor in the Stamp Department at Somerset House, advised against the use of the Queen's head. Therefore Archer chose to use the head of the Prince Consort.

Great Britain, Line Engraved Proofs and Essays, Prince Consort Essays - *contd.*



2082

2082 ⑤

The finished design, imperforate in black with four good even margins, without gum; a fine and fresh example of this popular essay. B.P.A. Certificate (1983). Specialised DP71 (2), £4,500. Photo

£1,200-1,600



2083

2083 ⑤

The finished design, imperforate in red-brown, four good margins, very large at top, weak frame line at right disappearing entirely at foot; unused without gum, fine. Specialised DP71 (2), £3,000. Photo

£800-1,000

2084 ⑤

Charles Whiting embossed cameo of Lord Grey, in shades of green and brown on card (130x175mm.), printed by the Congarve process; glue marks on the reverse. Rare and spectacular

£300-400



Ex 2085

2085 ⑤

1839 Treasury Competition Two essays, one William Wyon 1d. embossed in rose, without gum; and Charles Whiting 1d. black in oval design, cut square on ungummed paper. An attractive pair. Photo

£300-400

1840 ONE PENNY BLACK**Plate Ia**

- | | | |
|--------|---|----------|
| 2086 ○ | AF, four good margins and struck with light red Maltese Cross cancellation and AL good margins on three sides and huge margin at top, used by crisp Maltese Cross in red; both slightly soiled in places otherwise good examples. Photo (2) | £180-220 |
| 2087 ○ | BB a slightly worn impression, good to large margins all round, red Maltese Cross cancellation; fine and attractive. Photo | £100-120 |



- | | | |
|--------|---|----------|
| 2088 ○ | BB, large even margins cancelled by crisp virtually complete Maltese Cross in red; fine. Photo | £150-250 |
| 2089 ☒ | BC showing some plate wear, small to very large margins showing a trace of the stamp to the left and tied on wrapper to Camberwell by an ochre-red Maltese Cross bearing, on the reverse, two London datestamps of 1840 (18 May) ; there is a light horizontal folding crease. A good early cover. Photo | £120-180 |
| 2090 ○ | ED grey-black shade showing moderate plate wear, crisp red Maltese Cross cancellation, large margins and showing a trace of the adjoining stamp at right; fine and attractive. Photo | £200-250 |
| 2091 △ | EI a fine early impression not showing plate wear, good to large margins all round, tied by a crisp red Maltese Cross cancellation in a pinkish shade, to front with part of back flap to Preston, Huddersfield c.d.s. in the same shade on reverse; fine and scarce first Saturday usage. Photo | £300-400 |
| 2092 ○ | EI, large to very large margins and cancelled by indistinct light red Maltese Cross | £150-250 |
| 2093 ☒ | GG good to large margins all round, tied by black Maltese Cross cancellation to small entire addressed to Hertford and with Hatfield undated circular datestamp alongside; tiny surface rub in the border at left, otherwise fine and most appealing. Rare. Specialised AS1f, £1,100 off cover. Photo | £300-350 |

Photos also appear on page 29

Great Britain, 1840 One Penny Black, Plate Ia - *contd.*



2094

2094 △

GI with good to small margins cancelled by red Maltese Cross and affixed to piece showing d.s. 'C / MY - 6 / 1840' with faint traces of red ink 'tying' the two. Expert's handstamp on reverse and R.P.S. Certificate (1973) stating '*the proof is lacking through the weakness of the 'tie'*'. Photo

£1,000-1,500



2095



2095A

2095 ○

HG, crisp impression and large even margins, cancelled by very clear orange-red Maltese Cross cancellation; fine. Photo

£200-250

2095A ○

IB-IC **horizontal pair** with large even margins and cancelled by two crisp strikes of red Maltese Cross leaving much of the design clear; crisp impression and fresh appearance; fine. Photo

£400-450

2096 ☒

JJ in a deep shade, good to large even margins and just tied by a bright red Maltese Cross on entire letter from Edinburgh dated 1840 (3 Sept.); horizontal folding crease at top and minor soiling. An interesting letter sent from the Canal Office to the lock keeper at Lock of Rachau, Rachau Mill. Photo

£100-150

2097 ☒

OI showing pronounced Plate wear, slightly close to very large margins all round and showing a portion of the adjoining stamp at right, tied by red Maltese Cross cancellation to entire letter to Cambridgeshire, red Sevenoaks datestamp of 24 July 1840 on the front and with arrival datestamp on the reverse; fine. Interesting contents are a response to an enquiry into legal judgements of 1830 against one Richard Smith with charges for the related search and reply totaling 11/9d. Photo

£200-250



2089



2091



2093



2096



2097



2118



2124



2129



2116



2130

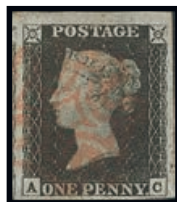
Great Britain, 1840 One Penny Black, Plate Ia - *contd.*



- | | | |
|--------|--|--------------|
| 2098 ○ | LD grey black, large to enormous margins and cancelled by crisp red Maltese Cross, fine. Specialised AS2. Photo | £100-150 |
| 2099 ○ | ND, good to large margins, lightly cancelled by a central strike of Maltese Cross in red, fine. Photo | £150-250 |
| 2100 ○ | PA, worn impression, good to very large margins and tied to small piece by red Maltese Cross; fine and signed on reverse. Photo | £100-150 |
| 2101 ○ | QE, good margins to top and right, huge margins at left and foot, cancelled by light strike of red Maltese Cross; light corner bend at lower right. Photo | £80-120 |
| 2102 ○ | QJ grey-black shade showing moderate Plate wear, upright red Maltese Cross cancellation, balanced margins; fine. Photo | £200-250 |
| 2103 ○ | FE, Plate Ib: DF, Plate II: QJ, Plate III: MB, Plate IV: HJ, Plate V: LC, Plate VI: EB, Plate VII: LF and Plate IX: OF, all with red Maltese Cross cancellations mostly leaving the Queen's profile untouched; chiefly fine and attractive. | £1,100-1,200 |
| 2104 ○ | A small selection with FC, good to large margins and fine; KE large to very large margins and fine; LL with margins just cut into to very large; also 1840 (25 May) entire to Carlisle bearing QD in a pale shade showing plate wear (margins touching to large), well tied by a neat, dull red Maltese Cross and a good strike of boxed "PUT IN AFTER/7 O'CLOCK AT NIGHT" in red. | £240-300 |
| 2105 ○ | RL no ray flaw, worn-impression with good margins on three sides, just touching the frame-line at left, cancelled by smudged Maltese Cross in red and Plate Ib, JB, good to large margins cancelled by red Maltese Cross | £200-300 |
| 2106 ○ | A small group with MK (close to large margins) showing re-entry in N.E. square and red Maltese Cross; QG (small to very large margins), recut left frame line and central black Maltese Cross; also 1841 1d. JK (just cut into at foot) showing re-entry N.E. square and QI (good to large margins). A good group. (4) | £240-300 |



- | | | |
|-----------------|--|----------|
| 2107 ○ | MF matched with Plate Ia, showing double letter 'M', both with good margins and crisp impressions, both are cancelled by the red Maltese Cross, Plate Ia with a particularly clean and vivid red colour; fine. Photo | £350-450 |
| 2108 ○ | ND, retouched check letters, good to large margins and cancelled by clear red Maltese Cross leaving most of the design clear; fine. Photo | £150-250 |
| Plate Ib | | |
| 2109 ○ | AB large margins, red Maltese Cross cancellation in an orange-red shade which leaves the Queen's profile untouched; fine. Photo | £200-250 |



2110



2111



2112

- 2110 ○ AC a lovely delicate impression, part of sheet margin at top, showing a portion of the adjoining stamp at left and large margins other sides, light red Maltese Cross cancellation; fine. Photo £200-250
- 2111 ○ AJ in a deep colour, good to very large margins and cancelled by two strikes of black Maltese cross. A good stamp. Photo £120-150
- 2112 ○ BL in a lighter shade, huge margins on three sides and sheet margin at right, cancelled by very clear red Maltese Cross; light vertical crease not affecting the fine appearance. Specialised AS5. Photo £300-400



2113

- 2113 ○ CB-CG horizontal strip of six with large to small margins, very slightly cut into at the top right of CG, cancelled by multiple strikes of the red Maltese Cross. Light diagonal bend affecting CB, horizontal crease affecting CF and pencil note on the reverse. Otherwise a striking multiple. Photo £2,500-3,000



2114



— 2115 —



2117

- 2114 ○ CF **watermark inverted**, black Maltese Cross cancellation, close to large margins all round; fine. Specialised AS51, £2,500. Photo £400-500
- 2115 ○ EI, good to large margins cancelled by red Maltese Cross and HL, recut corners, good to large margins cancelled by red Maltese Cross; some light soiling in places but generally good examples. Photo (2) £200-300
- 2116 ☒ HL with large margins all round, just tied by a light strike of a dull red Maltese Cross on local Edinburgh entire with 1840 (14 Aug.) backstamp; heavy vertical folding crease. Clearly shows the recut H square and the thin lower line. Photo £100-150
- 2117 ★ IE, with good to large margins on three sides and cut tight to design on left, large part original gum, scarce. Photo £1,000-1,500
- 2118 ☒ IG small to large margins all round, tied by black Maltese Cross cancellation to entire letter from Leeds to Batley, manuscript endorsements "Not found at Batley", "Not found at Leeds, May 21st.", "Not Clapham Bros", "Try Birstal, Leeds", "Not Clapham & Son" a variety of datestamps; fine. A remarkable cover which was presumably returned to the sender. Photo £350-400

Photos also appear on page 29

Great Britain, 1840 One Penny Black, Plate Ib - *contd.*



2119



2120



2121

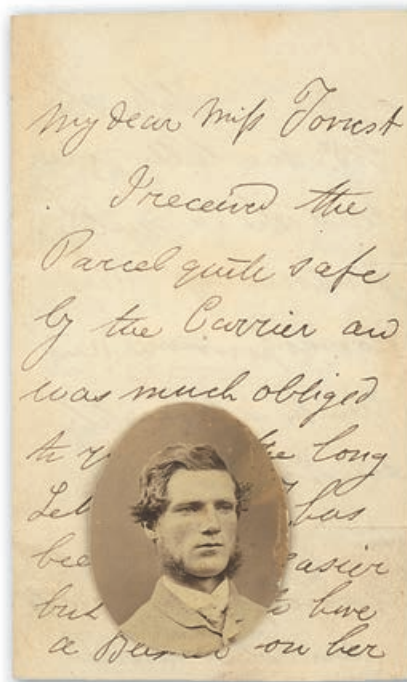


2122



2123

- | | | |
|--------|--|----------|
| 2119 ○ | JC, good to very large margins at right and foot, sharp impression and cancelled by part dark red Maltese Cross; fine. Photo | £100-150 |
| 2120 ○ | KF recut side lines and on thin paper, good to large margins all round, crisp red Maltese Cross cancellation; fine. Photo | £150-200 |
| 2121 ○ | KI crisp red Maltese Cross cancellation; good margins all round; fine. Photo | £150-200 |
| 2122 ○ | LB, recut side lines, large margins, small part of red Maltese Cross cancellation at upper left leaving the Queen's profile almost completely clear; fine. Photo | £200-250 |
| 2123 ○ | MA-MB horizontal pair with good to large margins, used by two clean strikes of red Maltese Cross, attractive and fine. Photo | £250-300 |
| 2124 ☒ | MG, large margins and tied to entire to Bradford by red Maltese Cross, addressee obliterated in blue ink. Photo | £150-200 |



2125

- | | | |
|--------|---|--------------|
| 2125 ☒ | QK good to large margins all round, tied by watery red Maltese Cross to miniature envelope (with enclosure "... She bids me tell you that she is quite jealous of our correspondence and thinks it highly improper in a young lady corresponding with an old married man ... I do not know if you will receive this or not as it is so very small but it is all the fashion...") from Newcastle on Tyne to Jedburgh dated 25 July 1840, small faults but an excessively rare use of a Penny Black on a miniature envelope. As well as the enclosure, there is a photograph of the writer. Photo | £1,200-1,400 |
|--------|---|--------------|

Photo for lot 2124 appears on page 29



2126



2127

- 2126 ○ RD, **watermark inverted**, good to large margins and cancelled by light strike of Maltese Cross in red leaving the profile clear; fine. AS51, £2,500. Photo £350-450
- 2127 ○ SJ, large margins on three sides and enormous margin at right, cancelled by light strike of red Maltese Cross; fine. Photo £150-250



2128



2131

- 2128 ○ TA, crisp impression with large margins, enormous at foot and cancelled by crisp red Maltese Cross; fine. Specialised AS5. Photo £100-150
- 2129 ☒ TB with large even margins tied by a neat strike of a black Maltese Cross on wrapper to Edinburgh and bearing, on the flap, Aberdeen 1841 (17 Aug.) despatch c.d.s. and Edinburgh arrival for the next day; two vertical filing creases. Shows the thin line at foot of the B square. An attractive cover. Photo £150-200
- 2130 ☒ TI part of sheet margin at foot and good to large margins other sides, tied to entire letter to Lichfield by reddish orange Maltese Cross cancellation with matching Uttoxeter c.d.s. of 25 Nov. 1840 alongside; clean filing folds, fine and spectacular. Photo £500-600
- 2131 ○ TL, parts of sheet margin at right and foot, good margins other sides, red Maltese Cross cancellation; fine. An outstanding corner example. R.P.S. Certificate (2020). Photo £500-600
- 2132 ☒ OD, good margins on three sides, touching frameline at top, tied to entire letter by **Maltese cross in magenta**, an unusually clear strike of this very rare shade of cancellation associated with the Preston office at this time with only c. sixteen covers recorded, confirming Preston datestamp (21.12) datestamp on reverse. B.P.A. Certificate (1984). Specialised AS vd £900-1,000

PROVENANCE:

Recorded in Rockoff/Jackson, Vol. 2, Page 229

Plate II



2133

- 2133 ○ AD, re-entry, with large margins and cancelled by indistinct red Maltese Cross cancellation. Photo £150-250

Photos for lots 2129 and 2130 appear on page 29

Great Britain, 1840 One Penny Black, Plate II - *contd.*



2134

2134 ☒

AG-BH block of four, just cut into at top, other margins close to large, well tied by dull red Maltese Cross on local Coleraine entire with Coleraine 1840 (23 June) c.d.s. (2) at left; there is a heavy vertical filing crease which has caused some of the paper to split (this has been reinforced with stamps hinges). A striking cover, rare with a block. Photo

£2,000-2,500



— 2135 —

2136

— 2137 —

2135 ○

AG, matched in red, the black with good even margins and cancelled by red Maltese Cross and the red with generally good margins and cancelled by black Maltese Cross; an attractive pair. Photo

£250-350

2136 ○

AI crisp and practically central red Maltese Cross cancellation, good to large margins all round; fine. Photo

£120-150

2137 ○

CD, good to large margins, cancelled by central strike of **black** Maltese Cross and ND, good to very large margins cancelled by crisp red Maltese Cross; fine. Photo

£300-400



2138

2139

2140

2138 ○

CE small part of red Maltese Cross cancellation at upper right which leaves most of the Queen's head untouched; a trifle soiled but nevertheless an exceptional example. Photo

£140-160

2139 ○

CG large margins all round, red Maltese Cross cancellation; fine. Photo

£150-180

2140 ○

DD, good margins all round, cancelled by crisp deep red Maltese Cross; fine. Photo

£150-250

- 2141 △ DK good to large margins all round, tied to piece by upright, crisp red Maltese Cross with undated circular “CLIFTON” alongside and with red Bristol c.d.s. of 31 May 1840 (fourth Sunday) c.d.s. on the reverse; fine. Photo £250-300



2142



2144



2145



2147



2148

- 2142 ○ HF, crisp red Maltese Cross cancellation, good balanced margins; fine and attractive. Photo £150-200
- 2143 ☒ LB with small to large margins, cancelled by a light strike of a bright red Maltese Cross on 1841 (4 Jan.) entire to the Marquis of Downshire, East Hampstead Park, Bracknell; there is a light vertical filing fold. The adhesive shows the horizontal guide line at top and is in a particularly sharp printing. A good cover. Photo £120-180
- 2144 ○ LJ-LK horizontal pair, mixed margins, just touching at right and showing traces of one design above, cancelled by neat and light strikes of pale red Maltese Cross. A good pair. Photo £140-180
- 2145 ○ LL crisp, complete and almost upright red Maltese Cross cancellation, fair to good margins; fine and most attractive. Photo £150-200
- 2146 ○ A small group with MB matched pair, black with good to large margins and a slightly smudged red Maltese Cross, red cut close near one corner; PJ with large to enormous margins showing a good part of the stamp below, a neat black Maltese Cross, slight soiling; also 1d. red, RD, margins just touching D square. (4) £200-260
- 2147 ○ MF, good to very large margins and cancelled by light strike of Maltese Cross in red, fresh appearance; fine. Photo £150-250
- 2148 ○ MH, deep impression with good to large margins, crisp red Maltese Cross cancellation; fine. Photo £150-250



2149



2151



— 2152 —

- 2149 ★ NI in a deep shade, small to good margins, unused with some gum. A handsome stamp. Photo £800-1,200
- x2150 ☒ NK, close to very large margins all round and showing a trace of the adjoining stamp at left, the by a crisp red Maltese Cross cancellation to the lower left corner of entire to Dudley dated 6 April 1840, “broseley” u.d.c. and red datestamp alongside; fine. Photo £250-300
- 2151 ○ PL with good to large margins and a central strike of a carmine-red Maltese Cross in an opaque ink; there is a small mark on the reverse. Photo £100-150
- 2152 ○ QI, matched in red, the black with large even margins and obliterated by a light strike of the red Maltese Cross and the red on blue paper with close to good margins cancelled by crisp entire black Maltese Cross; fine. Photo £250-350

Photos also appear on page 39

Great Britain, 1840 One Penny Black, Plate II - contd.

2153 ☒

QJ close to very large margins all round, tied to entire letter to Manchester, dated 16 July 1840 by a Maltese Cross in a brownish-purple shade with Prescott c.d.s. in the same colour alongside; the entire letter with central vertical filing fold well clear of the adhesive; fine. Photo

£700-800

Note: Rockoff and Jackson record just two other covers from Prescott with this coloured Maltese Cross



2154

2154 ○

TH, good even margins and crisp impression, cancelled by light and clear strike of red Maltese Cross; fine. Photo

£150-250



2155

2155 △

BH, OH, OI and OJ, singles arranged as a strip of four, all with margins all round, tied by heavy red Maltese Cross cancellation to piece with Pembroke c.d.s. of 18 Dec. 1840; OH with heavy vertical crease, others fine. Photo

£250-300

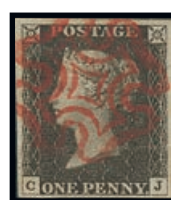
Plate III



2156



2157



2158

2156 ○

BB, huge even margins, cancelled by light Maltese Cross in red; fine. Photo

£200-300

2157 ○

CE with large to very large even margins and cancelled by a light strike of scarlet-red Maltese Cross. A very attractive stamp. Photo

£180-250

2158 ○

CJ with small to large margins, cancelled by a neat strike of scarlet-red Maltese Cross. Photo

£100-140

Photo for lot 2153 appear on page 39

- 2159 ☒ CJ in a deeper shade, good to very large margins showing a fragment of the design below, well tied by a fair strike of a dull red Maltese Cross on wrapper to Edinburgh, the reverse with Glasgow despatch 1840 (18 Dec.), Edinburgh arrival for the next day and a part strike of a boxed examiner's handstamp, all in red. The stamps clearly shows the scratches in the bottom and top margins as well as the N.E. square. There is some arrival annotation on the address side. A good cover. Photo £120-180
- 2160 ☒ DJ, Plate IV CH (showing a sizeable portion of the adjoining stamp at upper right), Plate V TK (placed upside down on entire frown Swords to Dublin), Plate VI GA, each on separate entire, good appearance but all have faults. Also Plate 3, FE used. (5 items) £250-300



2162



2164



2165



2166

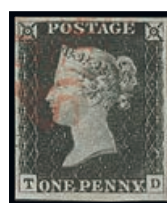


2167

- 2162 ○ KA, worn-impresion with good even margins, cancelled by crisp red Maltese Cross which leaves the Queen's profile clear; fine. Photo £200-300
- 2163 ☒ LB good to close margins tied by clear red Maltese Cross, a touch faded, to wrapper addressed to Manchester, with 'LS / 15 JV 15 / 1840' d.s. on reverse, attractive with only minor soiling to envelope. S.G. £900. Photo £100-150
- 2164 ○ OD, good margins all round and centrally cancelled by slightly smudged red Maltese Cross; a good example. S.G. £500. Photo £150-200
- 2165 ○ PE, letter 'p' with small loop, good margins and cancelled by light strike of Maltese Cross in black. Photo £200-250
- 2166 ○ PI, letter 'p' with small loop, worn impression, good to large margins; cancelled by crisp dark red Maltese Cross; fine. Photo £200-300
- 2167 ○ QK grey-black shade, practically complete deep red Maltese Cross cancellation, good margins all round; fine. Photo £200-250



2168



2169



2170

- 2168 ○ SE huge margins and showing portions of three adjoining stamps, practically complete and upright red Maltese Cross cancellation; fine £150-200
- 2169 ○ TD, good to large margins, crisp impression and very lightly cancelled by Maltese Cross in red; fine and fresh £200-300
- 2170 ○ TD, worn impression with clear to large margins, slightly smudged black Maltese Cross; a good example £150-250
- 2171 ○ A small group with CK (small to large margins), light red Maltese Cross; GJ (good to large margins), red Maltese Cross; HK (almost touching to very large margins) a light strike of a dull red Maltese Cross; generally good. (3) £220-250
- 2172 ○ HI with four margins and red Maltese Cross, DL worn impression with four margins and light black Maltese Cross and Plate IV, PG, four margins and fairly clear red Maltese Cross cancellation; good to fine £300-400

Great Britain, 1840 One Penny Black - *contd.*

Plate IV



— 2173 —

2175

2175A

- | | | |
|---------|---|----------|
| 2173 △ | CG close to large margins, tied to small piece by red Maltese Cross, also Plate X: KH, good to large margins all round, tied to piece by bold black Maltese Cross; fine. Photo | £300-350 |
| 2174 ☒ | CJ good margins all round, tied to entire letter to London dated 11 Aug. 1840 by red Maltese Cross in an orange shade and with matching Brighton datestamp on reverse; Plate VI OE good margins all round, tied by red Maltese Cross in a vermillion shade to entire letter dated 16 Oct. 1840 to Haverford West and with matching Bristol datestamp on reverse; a good pair of orange Maltese Cross cover. Photo | £500-600 |
| 2175 △ | DA double letter D, part of sheet margin at left and large margins other sides, tied to piece by a red Maltese Cross which leaves the Queen's profile hardly touched. Photo | £400-500 |
| 2175A ○ | GL practically complete red Maltese Cross cancellation, large margins all round and showing a portion of the adjoining stamp at top; fine. Photo | £150-200 |



— 2176 —

2178

- | | | |
|--------|---|----------|
| 2176 ○ | HE, even margins and very light red Maltese Cross cancellation and OC, good margins and crisp central red Maltese Cross; the latter a little toned. Photo | £200-300 |
| 2177 ☒ | HG in a deep shade, close to very large margins and well tied on 1840 (1 Sept.) entire to Ballymony by a good strike of a deep red Maltese Cross, the reverse with Ballycastle and arrival c.d.s. for the same day; two vertical folding creases, otherwise fresh and fine. Photo | £100-120 |
| 2178 ○ | ID, clear to very large margins and a sharp impression, cancelled by orange-red Maltese Cross, a good example. S.G. £400. Photo | £100-150 |
| 2179 ☒ | JE, very large margins all around, tied to part wrapper by black Maltese Cross, addressed to Lincoln's Inn Fields, fine. Mike Jackson Certificate (2020). Specialised AS23. Photo | £450-500 |



2141



2143



2150



2153



2154



2163



Ex 2174



2177



2179



2182

Great Britain, 1840 One Penny Black, Plate IV - *contd.*



— 2180 —

2180 ☒

LL, large margins, huge at right showing part marginal inscription, tied to entire by 'waterbound' Glasgow red-purple (magenta) Maltese cross, boxed '26' receiving house mark in the same ink as the Maltese cross, together with octagonal and boxed Glasgow datestamps for 6th September (Sunday) and 7th September respectively; very fine and scarce Sunday usage. Also Plate 1a, IK, grey black shade with four good to large margins, tied to small piece by very clear strike of red-purple Maltese cross, fine. R.P.S. Certificate (1974) and B.P.A. (2018) Certificates for the cover and R.P.S. certificate (2012) for the stamp on piece. Specialised A1 vd. Photo

£2,000-2,500

PROVENANCE:

"Durham", 1994 and "Victoria", 1975 respectively



2181



2185

2181 ○

PK crisp red Maltese Cross cancellation, good margins all round; fine. Photo

£150-200

2182 ☒

SD, re-entry with close to good margins used and tied to part opened out entire to Wakefield by red Maltese Cross, Leeds transit and Wakefield arrival in red to reverse. Specialised AS23 a, £425+. Photo

£150-200

2183 ○

An attractive selection with IC and KC, both with small so large margins and tied on pieces by red Maltese Cross; KG good to large margins red Maltese Cross; ME small to good margins, pale dull red Maltese Cross; RC-RE horizontal strip of three, mixed margins, just touching in places, smudged black Maltese Cross (8)

£500-600

Plate V

2184 ☒

CA, State 2, part of sheet margin at left and good margins other sides, tied by black Maltese Cross cancellation to entire to Reading, dated 14 April 1841, dated markings on reverse; traces of soiling, scarce. Photo

£300-350

2185 ○

EG, slightly worn impression, good to large margins and very light crisp red Maltese Cross cancellation; a fine example. Photo

£100-150

Photos also appear on pages 39 and 43



— 2186 —



2188



2189



2190



2191

- 2186 ○ FF, with good to large margins and red Maltese Cross cancellation and NJ with good to large margins and light strike of red Maltese Cross. Photo £200-300
- 2187 ○ GH, matched trio comprising black with good to large margins, small part of adjoining stamp visible at left and cancelled by red Maltese Cross, red with good to large margins and cancelled by a centrally struck black Maltese Cross and a third red with good margins and crisp black Maltese Cross; a nice group £200-300
- 2188 ○ II a lovely delicate impression, red Maltese Cross cancellation which leaves the Queen's profile clear, good margins all round; fine. Photo £200-250
- 2189 ○ JC, good even margins and cancelled by centrally struck black Maltese Cross; fine. Photo £100-150
- 2190 ○ LA part of sheet margin at left, showing a portion of the adjoining stamp at top and good margins other sides, complete red Maltese Cross cancellation; fine. Photo £200-250
- 2191 ○ MJ crisp black Maltese Cross cancellation, good margins; fine. Photo £150-200



2192



2194



2193

- 2192 ★ ML, margins touching or just cut into at right, other margins with gum which is thick and crinkly. Photo £300-500
- 2193 ○ NE, good even margins and cancelled by a clear red Maltese Cross; fine. Photo £150-250
- 2194 ○田 PA-QB, **block of four**, good margins on three sides, repaired at left and cancelled by very light strikes of red Maltese Cross; pressed creases and a little soiled, still a presentable example of this rare multiple. Specialised AS25, £25,000. Photo £1,500-2,000



2195



2196

- 2195 ○ PD with large even margins, cancelled by central strike of red Maltese Cross, fine. Photo £100-150
- 2196 ○ QI large margins, red Maltese Cross cancellation; fine. Photo £120-150

Great Britain, 1840 One Penny Black, Plate V - *contd.*



2197

- | | | |
|--------|---|--------------|
| 2197 ☒ | <p>RK, close to large margins, tied to entire letter to Pontefract dated 27 March 1841 by distinctive black Leeds Maltese Cross cancellation, dated markings on front and reverse, a trifle soiled; fine. R.P.S. Certificate (2007). Specialised AS25ua, £10,000. Photo</p> | £1,600-2,000 |
| 2198 ☒ | <p>SD with large to very large margins (there is a scissor cut in the N.E. corner which just touches the design), well tied by a light strike of a carmine-red Maltese Cross on entire letter to The Marquis of Downshire at East Hampstead Park, the reverse with Hillsboro 1840 (20 Nov.) despatch c.d.s., Dublin (21.11) and London (22.11) c.d.s.; there are two vertical folding creases, fresh and attractive. Also matched with 1d. red-brown from state II, close to very large margins and neatly cancelled. Photo</p> | £140-200 |



2199

- | | | |
|--------|---|----------|
| 2199 ○ | <p>SI intense black shade, red Maltese Cross cancellation in a scarlet shade, good to large margins; fine. Photo</p> | £150-200 |
| 2200 ☒ | <p>TK with good to very large margins, tied by a double strike of red Maltese Cross on entire to the Marquis of Downshire at Easthampstead Park bearing, on the reverse, Banbridge 1840 (28 Nov.) despatch, Dublin and London (30.11) c.d.s.; there is a vertical folding crease. A neat and attractive cover. Photo</p> | £150-200 |
| 2201 ○ | <p>A group of used with CK, almost touching to large margins and brown-red Maltese Cross; Ib close to large margins cancelled by scarlet-red Maltese Cross on piece with Whitchurch 1840 (19 Nov.) c.d.s.; IE with very close to vary large margins with a pale strike of red Maltese Cross; IH touching to large margins and a light strike of dark red Maltese Cross, matched with 1d. red almost touching to large margins and neat Maltese Cross; also GD (defective) on large piece from Wakefield to Edinburgh. (6)</p> | £150-200 |



2184



Ex 2198



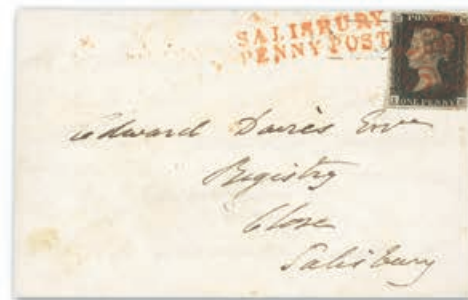
2200



2203



2205



2211



2216



2221



2242

Great Britain, 1840 One Penny Black - *contd.*

Plate VI



- | | | |
|--------|--|----------|
| 2202 ○ | AC, large margins all round, light red Maltese Cross cancellation, a nice example. Photo | £150-200 |
| 2203 ☒ | AI good to very large margins and an intense shade, tied by distinctive Manchester "Fish Tail" Maltese Cross cancellation to entire letter, red Manchester (20.5) and black Warrington arrival of 21 May 1841 on the reverse; fine. Specialised AS40ub, £4,500. Photo | £700-800 |
| 2204 ○ | AL corner example with parts of sheet margin at top and left, large margins other sides, neat black Maltese Cross cancellation; a trifle stained at top but a very large margined example. Photo | £150-200 |
| 2205 ☒ | BB large margins and showing a portion of the adjoining stamp at foot, placed at the left on entire letter, contrary to Post Office instructions and tied by a crisp, central red Maltese Cross in a reddish-orange shade, boxed "4" in black, and with Kirkcaldy datestamp of 8 Sept.1840 in the same colour on reverse; clean vertical filing fold well clear of the adhesive. A stunning cover. Photo | £700-800 |
| 2206 ○ | BF crisp red Maltese Cross cancellation in an orange-red shade, large to enormous margins and showing portions of two adjoining stamps; very fine. Photo | £200-250 |
| 2207 ○ | EJ, good to very large margins and cancelled by Maltese Cross in red, crisp impression; fine. Photo | £150-200 |
| 2208 △ | FJ, intense black, large even margins and tied to small piece by entire deep red Maltese Cross; fine. Specialised AS40, £600. Photo | £200-300 |



- | | | |
|--------|--|----------|
| 2209 ○ | GC red Maltese Cross cancellation, clear to large margins; fine. Photo | £120-150 |
| 2210 ○ | IA, large to very large margins and deep impression, cancelled by orange-red Maltese Cross; a fine example. Photo | £150-200 |
| 2211 ☒ | ID good to huge margins, tied by red Maltese Cross and black framed receiving House marking to entire letter to Salisbury, dated 2 June 1840, red "SALISBURY/PENNY POST" on the front and datestamp on the reverse in the same colour; fine and exceptional. Photo | £500-600 |
| 2212 ○ | IE, good even margins and cancelled by light red Maltese Cross, a good example. Photo | £100-150 |
| 2213 ○ | JI red Maltese Cross cancellation, large margins and showing a portion of the adjoining stamp at upper right; fine. Photo | £150-200 |

Photos for lots 2205 and 2211 appear on page 43



2214



2215

- | | | |
|--------|---|----------|
| 2214 ○ | KF red Maltese Cross cancellation in an orange-red shade, good to large margins; fine and appealing. Photo | £150-200 |
| 2215 ○ | OC intense black shade, crisp black Maltese Cross cancellation, good to large margins; fine. Photo | £150-200 |
| 2216 ☒ | PC large balanced margins and a lovely delicate impression, tied by crisp black Maltese Cross cancellation to wrapper (no side flaps) to Cockermouth, with Kewswick datestamp of 18 Sept. 1841 on the reverse; fine and most attractive. Karl-Louis Certificate (2005). Photo | £400-500 |



2217



2218

- | | | |
|--------|---|----------|
| 2217 ○ | QJ, re-entry, with clear to good margins and a crisp impression, cancelled by a very clear red Maltese Cross; fine. Photo | £150-250 |
| 2218 ○ | SK, worn-impresion with good even margins, cancelled by almost complete crisp red Maltese Cross; an attractive example. Photo | £150-200 |
| 2219 ○ | A small group with EC close to very large margins and a part strike of black Maltese Cross; GF small to large margins with a very pale strike of red Maltese Cross; KG very close to large margins and red Maltese Cross; also IK on 1841 diminutive envelope to Dublin, close to enormous margins showing traces of the stamps above and below, light black Maltese Cross. (4) | £250-300 |

Photo for lot 2016 appears on page 43

Great Britain, 1840 One Penny Black - *contd.*

Plate VII



2220

2220 田

AF-BH block of six (3x2) from the top of the sheet showing part inscription "*Address and towards the RIGHT HAND SIDE of the*" with good to close margins all round, full original gum very lightly mounted in the margin only with light vertical bend affecting the right hand side of stamps AF and BF, barely visible inclusion in the margin beneath BH. Exceptionally fine and fresh with beautifully clear impression; a simply stunning mint multiple that would crown even the finest collections. B.P.A. Certificate (1972). S.G. AS44. Photo

PROVENANCE:

Lord Steinberg, Sotheby's (2011)

£100,000-120,000

- 2221 ☒ BB with good to large margins, cancelled by a rather smudged red Maltese Cross on neat wrapper to Ballymoney bearing, on the reverse, Magherafelt and Garvagh (blue) 1840 (4 Nov.) c.d.s.; two vertical folding creases away from the adhesive. Photo

£120-150



2222



2223



2224



2225



2226

- 2222 ○ EA upright black Maltese Cross cancellation, good balanced margins; fine. Photo £100-120
- 2223 ★ EC with good to very large margins showing a fragment of the stamp to the right, unused and regummed; there is an old hinge remainder. A good stamp. Photo £800-1,200
- 2224 ○ EI red Maltese Cross cancellation in an orange-red shade, large margins; fine. Photo £150-200
- 2225 ○ FL, good margins on three sides, close at right and cancelled by complete Maltese Cross in bright red; an attractive used example. Photo £120-140
- 2226 ○ GI crisp black Maltese Cross cancellation, good to large margins all round; fine. Photo £100-120



2227

- 2227 △ GK with large even margins and tied on piece by a light strike of carmine-red Maltese Cross. Very fine and desirable. Photo

£150-200



2228



2229

- 2228 ○ IA, good to large margins and used by largely complete Maltese Cross in deep red; fine. Photo £140-180
- 2229 ○ IL, with large margins all round and cancelled by a light Maltese Cross in red; fine. Photo £160-180
- 2230 ☒ JJ, sharp impression with four even margins, tied to entire letter by superb strike of orange-red Maltese cross of the Whitchurch, Salop dispatch office, Whitchurch dispatch (11.11) and London arrival (12.11) datestamps to reverse; a choice franking of this difficult plate. Specialised AS44 £350-400

Photo for lot 2221 appears on page 43

Great Britain, 1840 One Penny Black, Plate VII - *contd.*



2231

- 2231 ★ KI-KK horizontal strip of three, KK clearly showing the re-entry marks in the right hand corner squares, small to large margins, part original gum which has been partly redistributed; there is a trivial horizontal gum bend. A most attractive strip and a scarce multiple. B.P.A. Certificate (1992). S.G. AS44, a, £70,000+. Photo £25,000-30,000



2232



2234



2235



2236

- 2232 ★ LL with large to enormous margins, large part original gum; there is a light horizontal bend and a tiny tone spot in the left margin. A most attractive example of this plate. B.P.A. Certificate (2009). Photo £1,000-1,500
- 2233 ☒ PL, crisp full black impression with clear to very large margins, portion of adjoining stamps visible at top and foot, tied to entire letter from London to Edinburgh by red Maltese cross and with straight line 'CHARING CROSS' receiving house marking; London despatch (31.10) in black and Edinburgh arrival (2.11) in red to reverse, an attractive combination of cancellations on this uncommon plate. Specialised AS44 £250-300
- PROVENANCE:
Lanterna, Harmer's, May 2006
- 2234 ○ QE fine deep red Maltese Cross cancellation, good to large margins all round; fine and attractive. Photo £200-250
- 2235 ○ RC good to large margins, central black Maltese Cross cancellation; fine and attractive. Photo £180-200
- 2236 ○ TL part of sheet margin at right and foot, huge margins other sides and showing portions of three adjoining stamps, red Maltese Cross cancellations. Simply phenomenal. Signed Giulio Bolaffi and with his Certificate (1973). Photo £2,000-2,500
- 2237 ○ A small group with EH with close to very large margins, red Maltese Cross; EK close to large margins and cancelled by a dull red Maltese Cross on part small envelope; ID with good to large margins and tied by dark red Maltese Cross on piece, fresh and attractive but light horizontal bend; ML touched to enormous margins, orange-red Maltese Cross, thinned. (4) £150-200

Plate VIII



2238

2238 ☒

AK sheet margin and inscription "... areful not to rem..." at top, close to very large margins other sides, tied by red Maltese Cross which leaves to Queen's profile almost untouched, to entire to Dublin dated 7 Dec. 1840; fine and scarce. Only a few marginal inscription Plate VIII covers recorded. B.P.A. Certificate (2019). Photo

£1,000-1,500

2239 ○

DB with close to large margins and cancelled by red maltese Cross; also matched with two 1d. red with margins close or just touched to very large. (3)

£80-120



2240



2241



2243



2245

2240 ○

FC, four even margins and crisp impression, used by clear red Maltese Cross; fin. Photo

£100-120

2241 ○

IE on thin experimental paper, red Maltese Cross cancellation, good to large margins; fine. Specialised AS46e. Photo

£100-120

2242 ☒

IH good to large margins, tied by a red Maltese Cross in a reddish pink shade to entire letter to Ashby-de-la-Zouche, dated 4 Feb. 1841 and with matching Derby c.d.s. below; clean folds clear of the adhesive. Appealing. Photo

£200-250

2243 ○

IJ, good to large margins and cancelled by almost complete and virtually upright red Maltese Cross; fine. Specialised AS46, £500. Photo

£150-200

2244 ○

ME matched pair, black with close to enormous margins showing a part of the stamps below, a light strike of dull red Maltese Cross; red with just touching to large margins and black Maltese Cross. (2)

£100-120

2245 ○

ML black Maltese Cross cancellation which leaves the Queen's profile clear, close to large margins all round; tiny fault in margin at right. Photo

£100-120

Photo for lot 2242 appears on page 43

Great Britain, 1840 One Penny Black, Plate VIII - *contd.*



2246



2247



2248

- | | | |
|--------|---|----------|
| 2246 ○ | NI, good to large margins, cancelled by red Maltese Cross; fine. Photo | £150-200 |
| 2247 ○ | OD, good margins and very lightly cancelled by red Maltese Cross. Photo | £140-180 |
| 2248 ○ | SI crisp black Maltese Cross cancellation, good to very large margins all round; fine and appealing. Photo | £150-200 |
| 2249 ☒ | TL constant variety, part of sheet margin at foot and at right, large to very large margins other sides and showing a portion of the adjoining stamp at left, tied by upright red Maltese Cross cancellation to entire (no side flaps) to Worthing with Lombard Street Maltese Cross datestamp of 1 Dec. 1840 on the reverse; fine and a spectacular constant variety. Photo | £300-350 |
| 2250 ○ | A group with AB, large to very large margins all round, tied by dull red Maltese Cross on 1840 (17 Nov.) entire to Hillsborough Filing crease through the adhesive); DJ, touching to large margins cancelled by pale red Maltese Cross on 1840 (23 Oct.) entire to Hillsborough Castle; IG close to very large margins, black Maltese Cross; TK close to large margins, black Maltese Cross; 1d. reds with BH and JG, margins touching to good. (6) | £180-220 |

Plate IX



2251



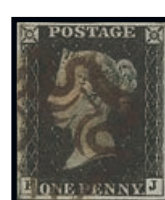
— 2252 —



2253



2254



2255

- | | | |
|--------|---|----------|
| 2251 ○ | AH part of sheet margin at top, large margins other sides, red Maltese Cross cancellation; fine. Photo | £120-150 |
| 2252 ○ | BE, large margin at top with part of neighbouring stamp showing, just touching frame line at foot and IA, four even margins; each cancelled by a black Maltese Cross. Photo | £200-300 |
| 2253 ○ | FA in a lighter shade, large to vary large margins and cancelled by a neat strike of black Maltese Cross. A good stamp. Photo | £150-200 |
| 2254 ○ | FJ, good even margins, cancelled by Maltese Cross in a dark red shade. Specialised AS56, £600. Photo | £200-250 |
| 2255 ○ | HG, good to large margins, clear impression and cancelled by red Maltese Cross; a good example. Photo | £200-250 |

Photo for lot 2249 appears on page 61



2256



2257



2258



2259

- | | | |
|--------|---|----------|
| 2256 ○ | IK, good even margins, crisp impression and lightly cancelled by red Maltese Cross. Photo | £200-250 |
| 2257 ○ | JE, even margins and central strike of red Maltese Cross; a good example. Photo | £150-200 |
| 2258 ○ | OJ, good to large margins and cancelled by crisp red Maltese Cross; a fine example. R.P.S. Certificate (2019). Specialised AS56, £600. Photo | £200-250 |
| 2259 ○ | OJ black Maltese Cross cancellation, good to large margins all round; fine. Photo | £100-120 |
| 2260 ○ | A collection on album page with GB on dated piece, good to large margins and red Maltese Cross; JE with good to large margins and tied by smudged red Maltese Cross in 1841 entire to London; TJ with margins just cut into to good and cancelled by a very light strike of brownish red Maltese Cross; also a group of 1d. reds but with mixed margins. (15) | £200-250 |

Plate X



2261



2262



2263



2264



2265

- | | | |
|--------|---|------------|
| 2261 ☒ | BJ, without "o" flaw, good to large margins with small portion of adjoining stamp showing at top, cancelled by clear black Maltese cross; fine. Specialised AS67a, £950. Photo | £250-300 |
| 2262 ○ | CB, state 2 provisional printing, clear to good margins and cancelled by black Maltese Cross at foot leaving the majority of the profile clear; a good sound example. Specialised AS68, £1,200. Photo | £200-300 |
| 2263 ○ | GA crisp, practically complete and upright black Maltese Cross cancellation, good to very large margins all round; a lovely example from this scarce Plate. Photo | £300-350 |
| 2264 ○ | GJ, double letter 'j', good even margins and cancelled by black Maltese Cross; a good example. Photo | £300-350 |
| 2265 ★ | HG, good to large even margins, unused with some gum. An attractive example of this scarce plate. Photo | £800-1,200 |
| 2266 ☒ | HG good to large margins all round, tied by black Maltese Cross cancellation to entire letter to Hereford, dated 11 May 1841, Upton u.d.c. and Worcester datestamp on the front; vertical filing fold affects the adhesive at left; scarce. Photo | £120-150 |

Photo for lot 2266 appears on page 61

Great Britain, 1840 One Penny Black, Plate X - *contd.*



2267

2267 △

JL small part of sheet margin at right, good to large margins other sides, tied to piece by distinctive Wotton-Under-Edge Maltese Cross and with c.d.s. of Feb. 21 1841 alongside; fine and rare. R.P.S. Certificate (1998). Specialised AS66ue, £6,500 off piece. Photo

£2,000-2,500



2268



2269



2270



2271

2268 ★

LB, good to very close margins, part original gum with small paper adhesion. Scarce. S.G. Specialised AS66, £24,000. Photo

£1,000-1,500

2269 ○

LF red Maltese Cross cancellation, large margins and showing a portion of the adjoining stamp at upper right; fine and scarce. Specialised AS66h, £1,500. Photo

£200-250

2270 ○

MG, four clear margins and cancelled by black Maltese Cross; a sound example. Specialised AS66, £900. Photo

£200-250

2271 ○

PG, re-entry, average to good margins and very lightly cancelled by red Maltese Cross; a good example. Photo

£150-200



2272



2273



2274

2272 ○

PK, re-entry, good even margins and lightly cancelled by black Maltese Cross leaving most of the design clear. Photo

£300-400

2273 ○

RK, long tailed 'r', good to large margins and cancelled by crisp red Maltese Cross; a fine example. Photo

£350-450

2274 ○

SH, four even margins, cancelled by clear Maltese cross in black; a sound example. Specialised AS66. Photo

£160-180

2275 ○

A small group with QC large to very large margins and neat black Maltese Cross. a very good stamp' also 1d. reds with AG, LG on wrapper. Also plate 11 with DE in black, margins just cut into to large, black Maltese Cross and 1d. red with HG, MJ and RL. (7)

£300-400

Plate XI



2276

2276 ○

BA, EE and KG, each with black Maltese Cross cancellation, large margins and fine appearance but all with faults

£1,200-1,400



2277



2278

2277 △

CL with good to very large margins and tied on small piece by a complete strike of a crisp and neat black Maltese Cross. A fine and delightful example and in quite a deep shade for this scarce plate. Brandon Certificate (2005). Photo

£1,500-2,000

2278 ○

HA matched pair, cancelled by black Maltese Cross. 1d. black with huge to good margins, showing part of adjoining stamp at right, 1d. red with even margins. Photo

£1,500-2,000



2279

2279 ☒

JF typical greyish black shade, small margin at right but large to very large margins other sides and showing a portion of the adjoining stamp at foot, tied by a black Maltese Cross to entire letter dated 29 July 1841 to Southampton, Farnham temporary (shifting) datestamp alongside; clean filing folds well clear of the adhesive, fine and one of the most beautiful Plate XI covers in existence. R.P.S. Certificate (2002)

£4,000-5,000

Great Britain, 1840 One Penny Black, Plate XI - *contd.*



— 2280 —

2280 ○

KD matched in red, cancelled by black Maltese Cross. 1d. black with very large to small margins, a touch cut into at the bottom left. R.P.S. Certificate (1988). Photo

£1,000-1,500



2281

2281 ☒

LB with good to tight margins (a touch cut into at the top left), tied by superb black Maltese Cross to wrapper addressed to Howden with single line 'NORTH CAVE' marking on the front, and two strikes of double arch 'HOWDEN / MR 21 / 1841' d.s. on reverse. Filing fold through the middle of wrapper and light marking small tear as to be expected. R.P.S. Certificate (1988). Fine and scarce. S.G. £16,000. Photo

£2,000-2,500



— 2282 —

2282 ○

LB matched in red, both large to very close margins, 1d. a touch cut into at base, and cancelled by black Maltese Cross. R.P.S. Certificate (1985) for 1d. black. S.G. Specialised AS72, AS74, £4,630. Photo

£400-500



— 2283 —

2283 ○

MC matched pair, cancelled by black Maltese Cross. 1d. black with large to small margins, with a thin. Photo

£800-1,000



2284

2284 ☒

OI with the margins touching or just cut into at right, other margins good to very large and well tied by a neat strike of black Maltese Cross on 1841 (15 Feb.) wrapper from London to Alnwick. A good plate 11 cover and an early date of use. S.G. AS72, £16,000. Photo

£1,500-2,000



2285



2286

2285 ○

SG, roller flaw, good to large margins and cancelled by complete and practically upright Maltese Cross in black; a fine example. Specialised AS73c, £6,000. Photo

£800-1,200

2286 ○

TK, re-entry, clear to good margins and cancelled by slightly smudged black Maltese Cross; a good example of this scarce plate. Specialised AS73a, £5,750. Photo

£400-500

Great Britain, 1840 One Penny Black - *contd.*

Unplated

2287 ○	Seven examples, all with margins all round, three cancelled in red, the remainder in black; good to fine appearance, one thinned	£500-600
2288 ○	Ten examples, mostly three or four margins, including Plate XI LJ unused and MB with black Maltese Cross (both cut into)	£500-600
2289 ○	Nine examples, all with four margins, three cancelled in black, the remainder in red, fine appearance; a few small faults	£650-750
2290 ○	Six examples, all with margins all round, two cancelled in black, the remainder in red, includes CL with part of sheet margin at right and four showing portions of adjoining stamps; some small faults but several of exceptional appearance	£700-800
2291 ○	Nine examples, all with four margins, two cancelled in black, the remainder in red, a few small faults but some of exceptional appearance	£750-1,000
2292 ○	Selection of twelve examples, all with four margins, one cancelled on black, the remainder in red; some faults but fair to good	£800-900
2293 ○	Nine examples, all with margins all round, two cancelled in black, the remainder in red; some small faults but chiefly good to fine	£800-900
<hr/>		
2294	1840-1940 mint and used collection mounted on hagner sheets comprising 1d. black Plates Ia-XI used singles (XI cut into), Plate Ia used (4) and pair, Plate Ib unused no gum (cleaned) (2) and matched pair used, Plate II used (6), one with huge margins, another with very crisp bright red Maltese Cross, Plate III used (3), Plate IV potentially unused with no gum and used (2), Plate V unused (2) one regummed, the other thinned, and used (2), Plate VI used (2), Plate VII unused regummed, and used (2), Plate VIII used (2) and matched pairs (2), Plate IX used (2), one with double 'B', matched pair, Plate X mint, regummed. Various 1840 penny red from black plates mostly used with a few unused cut into or regummed, 1840 2d. blue used (4), one a pair with potential, unclear Leeds Maltese Cross, a run of 1846 plates, 1849 2d blue strip of four and block of six used, 1887 Jubilee set mint and used, Seahorse values to £1 used in various printings, 1929 UPU set to £1 mounted mint. Mixed condition but a valuable lot. Cat. £30,000+	£5,000-6,000

1840 TWO PENCE BLUE

Plate 1

2295 ☒	AH re-entry , large margins and showing traces of adjoining stamps at left and right, tied by black Maltese Cross to long entire to Dunbar, being the weekly return by the Steward at Thirlstane Castle and providing a fascinating insight into work at the Castle (filing dung, pulling turnips); the entire a little stained and crumpled at places	£400-500
--------	---	----------



2296

2296 ○	BA-BE horizontal strip of five, close to large margins all round, very wide at right showing a part of the next stamp, cancelled by light strikes of scarlet-red Maltese Cross; there are a few tiny peripheral paper imperfections. An attractive strip. Photo	£600-800
--------	---	----------



2297

x2297 ☒

BA-BL in a horizontal maximum strip of twelve, with margins all round, generally good to very large but cut very close at the foot of BG-BI, cancelled and tied by orange-red Maltese Cross applied to each stamp on 1840 (1 Nov.) large envelope from Stone to a barrister in Grays Inn Square in London. The reverse with open top Stone despatch c.d.s. in black and London arrival (2.11) in red.

An exceptionally fine and desirable cover, extraordinarily rare to find a complete row, especially one which has not been cut into. A delightful 2/- rate cover and ready to grace the finest of collections or exhibits. Peter Holcombe Certificate (1986). Photo

£20,000-25,000

Great Britain, 1840 Two Pence Blue, Plate 1 - *contd.*



2298



2299



2300



2301



2302

- | | | |
|--------|---|----------|
| 2298 ○ | BG-BH horizontal pair , good to large margins all round, red Maltese Cross cancellations; fine. Photo | £600-800 |
| 2299 ○ | DB pale blue shade, good to large margins all round, crisp and central black thin-lined Edinburgh Maltese Cross cancellation; fine. Most attractive and scarce. Photo | £600-700 |
| 2300 ○ | DF slightly close to large margins, red Maltese Cross cancellation in an orange-red shade; fine. Photo | £160-200 |
| 2301 ○ | FL striking red Maltese Cross cancellation in a vermilion shade, good to large margins all round; a trifle soiled, fine. Photo | £250-300 |
| 2302 ○ | GA upright black Maltese Cross cancellation, close to very large margins all round and showing a portion of the adjoining stamp at top; fine. Photo | £150-200 |



2303



2304



2306

- | | | |
|--------|---|--------------|
| 2303 ○ | GJ-GK, horizontal pair with large even margins and cancelled by two clear full strikes of the Maltese Cross in orange-red, DS1, £2,000+. Photo | £450-550 |
| 2304 ○ | KB black Maltese Cross cancellation, good to large margins all round; fine. Photo | £200-250 |
| 2305 ☒ | KG in a bright shade, small to good margins all round, tied by a superb red Maltese Cross cancellation to entire letter dated 19 Dec.1840 from London to Dublin; dated markings on reverse, filing folds clear of the adhesive. A most appealing cover. Photo | £700-800 |
| 2306 ★ | KK in a light shade showing slight plate wear, inverted watermark , good to large even margins, unused without gum. An attractive example of this very scarce variety. Photo | £2,000-3,000 |



2307



2308

- | | | |
|--------|---|----------|
| 2307 ○ | LJ-LL, deep full blue horizontal strip of three with good to very large margins and portion of adjoining stamp showing at left, cancelled by black Maltese Cross obliterations; a fine multiple in a very deep shade. R.P.S. Certificate (1994). Specialised DS1. Photo | £700-900 |
| 2308 ○ | MF black Maltese Cross cancellations, good to large margins all round, close at upper left; fine. Photo | £160-200 |

Photo for lot 2305 appears on page 61



2309

2310

2311

- 2309 ○ MG with red Maltese Cross cancellation, TD with part sheet margin (and a trace of the inscription) at foot and showing portion of adjoining stamp at left, black Maltese Cross cancellation, Plate 2: FI with red Maltese Cross cancellation; all with margins all round, attractive examples but a few small faults. Photo £500-600
- 2310 ○ MJ large margins and showing a trace of the adjoining stamp at right, almost complete and upright Leeds distinctive Maltese Cross cancellation; fine and very scarce. M. Jackson Certificate (2015). Specialised DS5vd, £3,000. Photo £700-800
- 2311 ○ NG-NI horizontal strip of three in a steel blue shade, good to large margins and obliterated by red Maltese Cross cancellations, a fine and striking multiple. P.E.(G.B.) Ltd. Certificate (1994). Specialised DS4. Photo £800-1,000
- 2312 ☒ NJ, NK two singles on entire to Ballymoney, NJ cut into at right and creased, NK with good to enormous margins showing parts of the adjoining stamps on either side, tied by black Maltese Cross, the flap with Ballycastle 1841 (10 Dec.) despatch c.d.s.; two vertical filing creases. Photo £150-200



2313

2314

- 2313 ○ PH small to very large margins all round and showing a portion of the adjoining stamp at right, crisp and upright red Maltese Cross cancellation in a vermillion shade; fine and most attractive. Photo £400-500
- 2314 ○ PL central and upright red Maltese Cross cancellation, RL with "620" barred oval cancellation of Plymouth, Plate 2: FB with black Maltese Cross cancellation which leaves the Queen's profile clear, each with margins all round but with faults/repairs. Photo £400-500



2315

2316

- 2315 ○ QL red Maltese Cross cancellation, part of sheet margin at right and good to large margins other sides; fine. Photo £150-200
- 2316 ○ RH-RI, bright blue horizontal pair with superb even margins, cancelled by two strikes of Maltese Cross in red; fine. DS6A, £2,000+. Photo £400-500

Photo for lot 2312 appears on page 61

Great Britain, 1840 Two Pence Blue, Plate 1 - *contd.*

1840 TWO PENNY BLUE



2317



2319

- 2317 ○ SD, Pale blue shade, good to large margins and crisp impression, cancelled by almost complete clear Maltese cross in red; very fine. Specialised DS6. Photo £300-350
- 2318 ☒ TJ-TK horizontal pair on entire addressed to Kendal tied by two strikes of red Maltese Cross, good margins on two sides and touching design at left and top left; lovely rich shade. Photo £500-600
- 2319 ○ TL, pale blue with **watermark inverted**, huge margins at right and foot, clear to good elsewhere, cancelled by indistinct black Maltese Cross; a good example of this variety. Specialised DS6a, £6,000. Photo £600-800

Plate 2



2320



2321



2322



2323

- 2320 ○ AH, pale blue, good to large margins cancelled by crisp black Maltese Cross; a fine example of this shade. Specialised DS9, £1,200. Photo £400-450
- 2321 ○ BG black Maltese Cross cancellations which leave the Queen's profile clear, large margins and showing a portion of the adjoining stamp at top; fine. Photo £300-350
- 2322 ○ CB-CC **horizontal pair**, good to very large margins all round and showing portions of two adjoining stamps at top, **red Maltese Cross cancellations**, beautiful colour, fine and very scarce on this plate. Photo £1,500-1,800
- 2323 ○ HB-HC horizontal pair on a pale shade, good to large margins but cut close to the top right corner, fair strikes of black Maltese Cross. Photo £300-400



2324

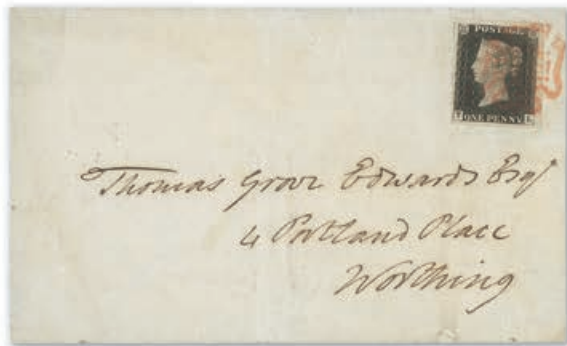


2325



2326

- 2324 ○ IE. deep blue, good to large margins and cancelled by Maltese Cross in red; a fine example. Specialised DS7 f, £1,750. Photo £400-450
- 2325 ○ IE, good to large margins and cancelled by Maltese Cross in red; a lovely rich shade. Specialised DS8 f, £1,750 £400-450
- 2326 ○ IE crisp black Maltese Cross cancellation, margins all round; fine. Photo £200-250



2249



2266



2305



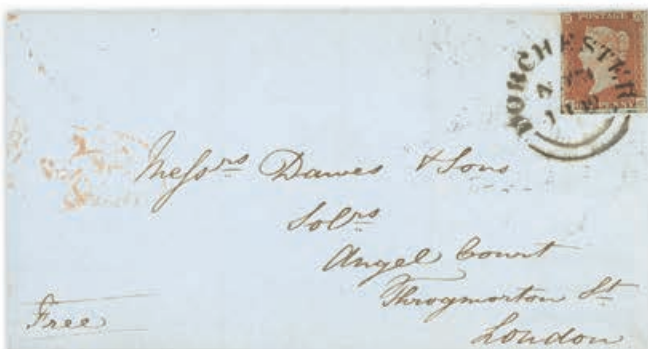
2312



2318



2350



2352



2354

Great Britain, 1840 Two Penny Blue, Plate 2 - *contd.*



2327



2328



2329

- | | | |
|--------|---|------------|
| 2327 ○ | KG-KH horizontal pair in a deep shade, good to large margins all round, two crisp black Maltese Cross cancellations; fine. A wonderful pair. Photo | £800-1,000 |
| 2328 ○ | KH, good even margins and cancelled by almost complete black Maltese Cross. Specialised DS8, £1,000. Photo | £200-250 |
| 2329 ○ | LB with good to large margins, cancelled by black Maltese Cross; attractive. S.G. £1,000+. Photo | £200-300 |



2330



2331

- | | | |
|--------|--|------------|
| 2330 ★ | LK in a fairly bright shade, small to good margins, part original gum; there is a possible tiny thin spot on the top of the watermark. A good-looking stamp. Photo | £800-1,000 |
| 2331 ○ | MD, three large margins, close at right, cancelled by complete Maltese Cross in black, a couple of tiny tone spots at upper left and upper right, attractive example. Specialised DS8, £1,000. Photo | £250-300 |



2332



2333



2334

- | | | |
|--------|--|----------|
| 2332 ○ | MG-MH horizontal pair, cancelled by light strikes of black Maltese Cross. Fine and fresh colour. Photo | £500-600 |
| 2333 ○ | OF-OG, horizontal pair, three good margins and just touching the design at right, cancelled by two strikes of Maltese Cross in black; a nice rich shade. Photo | £250-300 |
| 2334 ○ | PA double letter "P", red Maltese Cross cancellation which leaves the Queen's profile clear, good to large margins and showing a portion of the adjoining stamp at top; fine. Specialised DS8d, f. Photo | £300-350 |



2335

2335 ★[®]

PG-RJ deep blue block of twelve (4x3), RH constant variety, RI-RJ shifted transfer, large to close margins all round, a little coarsely cut at top, unused without gum with some pressed creases, QG with closed tear. Nevertheless a striking multiple with a beguiling deep blue shade and one of the largest unused multiples from this Plate extant. R.P.S. Certificate (2001), together with a letter confirming provenance from Mr. Michael Sefi, the then Keeper of the Royal Philatelic Collection, to Lord Steinberg. S.G. DS7. Photo

£40,000-50,000

PROVENANCE:

Royal Philatelic Collection, Spink, May 2001
 Lord Steinberg, Sotheby's, September 2011

Great Britain, 1840 Two Penny Blue, Plate 2 - *contd.*



2336



2337

- 2336 ○ TB, red Maltese Cross cancellation, close to large margins all round; fine. Specialised DS8f, £1,750. Photo £200-250
- 2337 ○ TI-TJ **horizontal pair**, lovely deep colour, close to large margins all round, black Maltese Cross cancellations; vertical crease between, clear of the design; fine and most attractive, TJ with almost clear profile. Photo £700-800
- Unplated**
- 2338 ○ Five examples, one cancelled in red, the remainder in black, margins all round, two showing portions of adjoining stamps; good appearance, some faults £450-500
- 2339 ○ Seven examples, including a single from the left of the sheet and a slightly cut into pair, all cancelled in black, mostly with margins all round and two showing portions of adjoining stamp; a few faults but several fine £700-800
- 2340 ○ A selection on album page which includes 1842 (2 Sept.) entire from Walsingham to Fakenham bearing OF, just touching to large margins and tied by black Maltese Cross; BD, close to large margins, EE just cut into left side, JL large to very large margins, LL touching to large margins, QA cut into right side on large dated piece, SC margins just cut into to large; also plate 2 EL margins just cut into to large. (8) £400-600

1841-53 ONE PENNY RED-BROWN




“Black” Plates

- 2341 ○ Collection (34) on pages, including covers or fronts with Plate 1b: GD, Plate 5: QD, Plate 8: AH, Plate 9: CD, EK, Plate 10: FB, Plate II: DG, etc., mixed condition. S.G. 7 £500-700
- 2342 ○ Plate 1b: DF with good to large margins and a fairly neat and central strike of black Maltese Cross. Fresh and fine. A very good example of this difficult plate £100-120
- 2343 ○ Plate 1b: ID, MI, ND and PA (State 3, 2nd. repair); Plate 2: CB-CC horizontal pair, HC, Plate 5: AG, CA, FL, RJ, Plate 8: AG, CD, TD, Plate 9: CI, IA, IH, MD, PA-QA vertical pair; Plate 10: FE, NI, RH, Plate 11 GB, JE, KJ, MD, and QA (2), all with black Maltese Cross cancellations, several small varieties, many with margins all round. S.G. 7, £500-700
- 2344 ○ Plate 1b: KJ, Plate 5: HE (double letter H), RB, SC (re-entry), Plate 9: LE, OD, RH, Plate 10: BE, OL, SK, Plate 11: SD and TK, all with black Maltese Cross cancellations, all with margins all round and good to fine. S.G. 7, £2,285 £300-400
- 2345 ○ Plate 5: An attractive selection with AF, AK, CB state II (just cut into), CK (just cut into), HB state II, IC (cut into), MC (superb), OD, SG and TK (cut into). (10) £100-120



2346

- 2346 ★ Plate 6: LA, on very blue paper, good to large margins, unsued with part original gum; a fine example. S.G. 8a, £700. Photo £150-250

- 2347 ○ Plate 8: IA-JD block of eight, touching to large margins and cancelled by black Maltese Cross; also an additional example of IA with good to large margins. A desirable block. Photo £200-400
-
- 2348 ○ Plates 12 to 85, a collection of 80 selected examples showing re-entries or other varieties, mostly neatly arranged on dealers' cards, including Plate 12: AD, third repair, Plate 13: DL, MH, Plate 14: AI, OG, Plate 15: RE, Plate 16: PC, Plate 21: ML, Plate 25: AG, Plate 26: NG, Plate 28: HB, Plate 29: SC, Plate 35: SJ (with Stirling Maltese Cross), Plate 36: OL with No. 5 in Maltese Cross, Plate 56: JG, etc., chiefly fine to very fine £700-900
- 2349  Plate 14: KA, Plate 26: BC, Plate 28: PL, Plate 34: NA, Plate 38: CJ, Plate 42: IE, mostly with margins all round and each tied to entire letter by Maltese Cross cancellation, Plate 34 with "3" and 42 with "6" number in Cross, also Plate 79: MB, large margins, tied by "134" barred oval of Bristol which leaves the Queen's profile clear. Chiefly fine and two with attractive engraving on the interior £300-350
- 2350  Plate 19: JC, large margins, tied by fine number "3" in Maltese Cross cancellation to entire letter to Preston, dated 31 May 1843; fine and uncreased. Specialised BS8uc, £600. Photo £200-250



2351


- 2351  Plate 21: BK, orange-brown, good margins on three sides, tied to entire to Helmsley by the distinctive York Maltese cross, superb strike of 'MICKLEGATE/YORK' two line receiving house marking in blue alongside and Pl. 31, red-brown, MF, four large margins and tied to entire by black Maltese cross, fine strike of 'MICKLEGATE/YORK' below in blue, York and Settle datestamps to reverse; a fine pair. Specialised BS10 and BS20. Photo £300-350

Photo for lot 5350 appears on page 61

Great Britain, 1841-53 One Penny Red-Brown - *contd.*

2352 ☒

Plate 22: CC close to large margins, tied to entire to London by larger type Dorchester/No 23/1842 datestamp, red London arrival on reverse; fine and rare. Specialised BS11va, £3,000. Photo

£500-600

PROVENANCE:

"Maximus" February 1970



2353

2353 ☒

Plate 23: BC, clear to large margins tied by an exceptional strike of the distinctive York Maltese cross in black on wrapper to Richmond, York despatch (28.7.42) and Richmond arrival (29.7.42) to reverse; rare with circa thirty covers recorded with this cross on the 1841 1d. red. Photo

£550-600

PROVENANCE:

"Maximus", Part IV, 1970

"Durham", 1994

Recorded and illustrated in Rockoff/Jackson, pg. 307/308

2354 ☒

Plate 23: JI close to large margins all round, tied by Maltese Cross and blue-black Derby c.d.s. tying the stamp on entire to Leicestershire, blue "MISSENT TO/LEICESTER/97" and Heytesbury c.d.s. in the same colour alongside. Rare and spectacular. Photo

£250-300

2355 ☒

Plate 29: CF good margins all round, tied to entire letter dated 27 June 1843 by two good strikes of the Edinburgh thin-lined Maltese Cross cancellation; fine

£100-120

2356 ☒

Plate 36: PJ, four good margins on wrapper to Banbridge with a superb strike of the distinctive Dublin Maltese cross in black, red diamond despatch (24.7.43) and Banbridge arrival (25.7.43) in blue; a fine example of this rare and distinctive Maltese cross

£100-120

2357 ☒

Plate 86: JD huge margins all round and showing portions or traces of five adjoining stamps, tied by "312" barred oval of Gloucester to entire letter, dated 21 May 1849, to Hereford; the cover with closed tear on the address panel. Exceptional

£120-140

- 2358 ☒ Plate 107: DG good to huge margins, tied by “635” barred oval of Reading to neat uncreased envelope dated 24 July 1851, blue Basingstoke c.d.s. on the front. Fine and a rare plate. Photo £250-300
- 2359 ☒ Plate 126: GE, enormous margins and showing portions of five adjoining stamps, tied by “312” barred oval of Gloucester to entire letter, dated 14 Feb. 1852, blue Hereford arrival c.d.s. on the reverse; closed scissors cut to the address panel; fine and outstanding. Photo £200-250



2360

- 2360 ○ Plate 127: TJ on lavender tinted paper, part of sheet margin and inscription “... *the Back be car(eful)*...” at foot, large margins other sides and showing a trace of the adjoining stamp at top, “76” Irish numeral cancellation of Carnoustie; fine, scarce and attractive. Photo £200-250
- 2361 ☒ Plate 135: RE massive margins and showing portions of three adjoining stamps, tied by “312” barred oval of Gloucester to entire letter dated 10 Aug. 1852, blue Hereford arrival c.d.s. on reverse; neatly closed scissors cut to the address panel. Exceptional £120-140
- 2362 ☒ 1844-53 twenty-three entire letters to the same address in Hereford, all franked imperf. 1d., including a pair, all with good to huge margins all round, Alphabets I and II, etc., chiefly fine and ideal for plating £150-200
- 2363 ○ Collection (200+) on pages and loose, including Plated examples from Plate 12, double letters, shades, strip and blocks of four, distinctive Maltese Cross cancellations, etc., many fine and an interesting group £200-300
- Cancellations**
- 2364 ○ Numbers in Maltese Cross: Set of numbers 1-12, clear strikes on selected four margined examples; chiefly fine. Concise £2,810 £250-300
- 2365 ○ Numbers in Maltese Cross: Collection (21) on pages, including numbers 4, 10 (3), 11 (2) and 12, also 1841 2d. with number 12, condition a little mixed but includes two double letters £200-300
- 2366 ○ Numbers in Maltese Cross: Selection of six, comprising 1, 5, 8, 9, 11 and 12; also 1841 2d. blue with number 8; chiefly fine but one or two slightly cut into, the 2d. blue very fine. Concise £2,400 £200-250

1841 TWO PENCE BLUE

Plate 3

- 2367 ☒ RJ-RK (RJ “J” flaw), **horizontal pair** with good to very large margins all round and RK showing a portion of the adjoining stamp at foot, toed by Edinburgh distinctive Maltese Cross cancellations to long entire letter to Falkirk dated 20 May 1843; fine. A lovely 4d. franking with distinctive cancellations. Photo £300-350

Plate 4

- 2368 ☒ AA with parts of sheet margin at top and left, large margins other sides, showing portions of two adjoining stamps, placed sideways and tied by London barred oval cancellation to entire to Kendal, dated 16 April 1853. An immaculate uncreased cover with a huge stamp. Photo £300-350

Photos also appear on page 85

Great Britain, 1841 Two Pence Blue, Plate 4 - *contd.*



2369

2369 ★

BE, good to large margins all round, unused with some gum; there are a few adherences on the reverse and redistributed gum; there is a tiny paper fault near the top of the left margin. Good appearance. Photo

£500-600



2370

x2370 ☒


1846 (2 Oct.) a large solicitor's envelope to Monmouth bearing DA-DL maximum horizontal strip of twelve plus CI; the stamps are in a pale shade and the margins generally good but the strip of cut into DI-DJ at top and DB at foot, CI with large to enormous margins. each stamp tied by "701" numeral of Shepton Mallet with the despatch c.d.s. alongside and the arrival c.d.s. on the reverse.
A wonderful showpiece. Photo

£2,000-2,500

1854-57



2371

2371 ★ 

Watermark Small Crown, Perf. 16 1d. Die II, Plate 4: GA-HC, **block of six** (3x2), original gum or large part original gum, centred to left and the fourth stamp with tiny surface defect below the Queen's chin; otherwise fine with fresh colour and most attractive. S.G. 21, £4,450 as a block of four and two singles. Photo

£600-900

1855-58

2372 

Watermark Large Crown, Perf. 16 2d. blue, Plate 6: RH tied by London barred oval cancellation to entire to Devon, dated 9 April 1858, well centred and practically clear Queen's profile; rare and exceptional in this condition. S.G. 55a. Photo

£200-250

1858-76 TWO PENCE BLUE



2373

2373 ★

Plate 13: TK-TL horizontal pair from the bottom right of the sheet, showing part inscription, Plate and sheet numbers; large part original gum with light soiling to the left stamp. Attractive. B.P.A. Certificate (1986). S.G. 47, £750+. Photo

£150-200

Photo for lot 2372 appears on page 85

Great Britain, 1858-76 Two Pence Blue - *contd.*



— 2374 —

2374 ★ ㊦

Plate 13: RC-SD, RE-SF and RG-SH blocks of four variety **imperforate**. Three adjoining blocks of four, each is with full original gum, good to large even margins though just touching the lower right corner of SH. There is some light gum wrinkling as is to be expected on this issue and displaying resplendent colour.

An astonishing and highly desirable reconstruction which surely represents the largest multiple of this rarity. Each block with B.P.A. Certificate (1989, 1989 and 1993.) S.G. 47a, £90,000+

£50,000-60,000



2375

- 2375 ★田 Plate 15: CG-DH block of four, large part original gum; very well centred and showing fresh colour, quite pale for this plate. E. Diena Certificate (1984). Specialised G3 (1), £3,300. Photo £500-700

1864-79 ONE PENNY RED

- 2376 ⊕B Plate 71: QG-?? block of twenty-four from the bottom right of the sheet showing part inscription and Plate number; some reinforced perfs. along single fold, otherwise mounted in the margin only with full original gum, fine and striking. Concise £1,320+ £200-250
- 2377 ★B Plate 79: NG-TL block of forty-two from the bottom right of the sheet showing part inscription and Plate number; large part original gum, horizontal crease across fifth row, a few split perfs. and minor soiling scarcely detracting from the appearance of this large multiple. Concise £2,016+ £200-250
- 2378 ★B Plate 87: OA-TL block of sixty-eight with four stamps omitted from the top row. Large part original gum, old repairs along perfs that have marked the paper slightly, minor creases, nevertheless an impressive multiple. Concise £3,264+ £300-350
- 2379 ★B Plate 119: AA-DE block of twenty from the top right of the sheet showing part inscription, Plate number and sheet number; original gum, mounted in the margin only, light horizontal crease across third row and a few split perfs., otherwise attractive and scarce. Concise £1,300+ £150-200
- 2380 ★B Plate 159: AA-DF block of twenty-four from the top left of the sheet showing part inscription, Plate number and sheet number; original gum, mounted on one stamp only, horizontal crease affecting top left stamp only and minor marking, otherwise fine. Concise £1,152 £150-200
- 2381 ★B Plate 164: AG-EL block of thirty from the top right corner of the sheet showing part inscription and Plate number; part original gum, a few split perfs. reinforced, otherwise impressive and scarce. Concise £2,100+ £250-300
- 2382 ★B Plate 191: QA-TL block of forty-eight comprising the complete bottom four rows of the sheet; full original gum, separated and rejoined vertically through the middle, but remarkably without major creases. Striking and scarce. Concise £2,304+ £300-350
- 2383 ★B Plate 192: PG-TL block of thirty from the bottom right of the sheet showing part inscription, sheet and Plate numbers; full original gum, mounted on one stamp only. Very fine with only a few reinforced perfs. Concise £2,100+ £300-350
- 2384 ⊕B Plate 202: AA-CF block of eighteen from the top left of the sheet showing part inscription, sheet and Plate numbers; repair to the top of the top margin leaving stamps unmounted mint and fine. Concise £1,440+ £200-300
- 2385 ★B Plate 208: AA-CL block of thirty-three comprising the top three rows of the sheet excluding the first three stamps of the third row; mounted in margins to collector's page and with some perfs reinforced, otherwise impressive, with full original gum and a scarce multiple. Concise £2,475+ £300-350

Great Britain, 1864-79 One Penny Red - *contd.*



2386

- 2386 ☉ Plate 225: BL, unmounted mint, usual crackled gum; fine and scarce. Concise £3,000+. Photo £300-350
- 2387 ★ A collection of plate number blocks and pairs contained in two albums, including plates 71, 76, 78, 83, 84, 86, 89, 94, 96, 97, 100, 103, 108, 110, 113, 117, 118, 122, 124, 130, 134, 136, 138, 140, 143, 146, 149, 151, 155, 157, 160, 161, 169, 171, 174, 178, 175, 180, 181, 182, 183, 187, 190, 193, 195, 196, 198, 200, 203, 204, 205, 206, 212, 214, 215, 217, 218, 223. Higher value blocks include a plate 169 block of 25, plate 190 block of 16, plate 180 block of 18, plate 195 block of 20, plate 175 block of 22 and more. A wonderful and high value group. Cat. £30,000++ £5,500-6,500
-
- 2388 ★田 1870-79 ½d., a small group of marginal plate numbers including Plate 10 pair mounted on one stamp only and reinforced along top perfs., Plate 11 block of four unmounted with horizontal crease affecting right hand vertical pair, perfs. loose at base and reinforced tear, Plate 12 pair large part original gum, Plate 14 single unmounted with horizontal crease and Plate 15 pair mounted in the margin only. Regardless of faults, a good group of plate numbers. S.G. 48-49, Concise £1,450 £80-100



2389

- 2389 ★ 1870-74 1½d. rose-red, plate I, **error of lettering 'OP-PC' for 'CP-PC'**, an unused example which has been regummed, fine and fresh; rare. R.P.S. Certificate (2019). S.G. 53, £25,000. Photo £3,000-5,000



The Royal Philatelic Society London

We are pleased to receive proposals for membership of the Society which is through election.

If you are interested in membership, please contact us at secretary@rpsl.org.uk

If you have no proposer or seconder, please contact us for further information.

Tel: 00 44 (0)20 7486 1044 | www.rpsl.org.uk

The world's oldest and most prestigious philatelic society, established 1869, with over 2,000 members in more than 70 countries.

Extensive premises in London's West End house the Society's superlative library, plus Museum and Archive, and provide first-class meeting facilities.

The Society's Online Catalogue provides access to over three-quarters of a million philatelic indexes to members world-wide.

A fascinating programme of displays and meetings throughout the year, supplemented by regional meetings and gatherings at major international events.

The Society publishes ten times a year its own journal, *The London Philatelist*, containing articles of outstanding philatelic research, in addition to publishing major philatelic works.

We are honoured to have Her Majesty Queen Elizabeth II as our Royal Patron

1847-54 EMBOSSED

- 2390 ○ 6d., 10d. and 1/- each cancelled by barred oval and cut square with good to no margins, with some staining. S.G. 54, 57, 60 £100-200



2391



2392

- 2391 ○ 10d. brown, cut square and with good margins all round, London barred over cancellation; violet handstamp on reverse, fine. Photo £400-500

- 2392 ○ 10d. brown, vertical pair just touching the design at lower right, each cancelled by numerical 780 oval of Tavistock; some light soiling in places. Specialised H2 (1), £3,000+. Photo £500-700



2393



2395



2396

- x2393 © 1/- green, die 2 overprinted "SPECIMEN" type 2, small to large margins, large part original gum. Fresh and a very appealing example of this scarce stamp. B.P.A. Certificate (1998). Specialised H1 (2)u, £8,000. Photo £1,000-1,200
- 2394 ✉ 1/- green, Die II, large margins on three sides and just cut into at foot, tied on cover by Wakefield Duplex to Lagos, Western Africa dated 20th October 1855; one of the earliest examples of mail to or from Lagos £300-500
- 2395 △ 1/- green with clear to good margins used and tied to small piece by '700' sideways duplex of Sheffield, fine and attractive. Specialised H1 (2), £1,000. Photo £300-400
- 2396 ○ 1/- green, from the upper right corner of the sheet and with good margins other sides showing a trace of the adjoining stamp at foot, London "22" barred oval cancellation; very fine. Photo £300-400

Great Britain - *contd.*

SURFACE PRINTED

1855-57



2397



2399

- 2397 ○ Watermark medium Garter 4d. carmine, wing margin at left, brilliant neat central and upright Liverpool dotted cancellation of 24 March 1856. Stunning and rare. Photo £300-400
- 2398 ○ Watermark large Garter 4d. rose, a well-centred example used by crisp BELFAST c.d.s. leaving the profile clear and 1875 3d. rose, Plate 17: QD, wing margin example used by clear 'SWINFORD' c.d.s. S.G. 66a and 144 £100-150
- x2399 ★ 1862-64 1/- green, **abnormal Plate 3**: BC imperforate, watermark inverted, good to large margins, part to large part original gum. A fine example of this popular stamp. S.G. 91a, £7,250. Photo £1,500-2,500
- This plate was not put to press and these stamps are from extra sheets which were run off at the same time as the imprimatur sheet. Two sheets of imperforate are recorded, one with inverted watermark. Of the 120 stamps released only 42 have been recorded.*

1867-80 WATERMARK SPRAY OF ROSE



2400

- 2400 △ 9d. straw Plate 4, LJ with 2/- blue GA, tied to piece by concentric circles cancellation; the 2/- centred to foot, fine and an attractive combination. S.G. 110, 118. Photo £150-200



2401



2403

- 2401 ★ 9d. pale straw, plate 4, SB, well-centred with part original gum; a sound example. S.G. 111, £2,400. Photo £300-400
- 2402 ○ 10d. pale red-brown, plate I, TC-TD, horizontal corner pair from the lower right of the sheet, cancelled by 'MARK LANE B.O./ E.C.' c.d.s. for April 1st 1874. S.G. 112, £800+ £100-150
- 2403 ○ 2/- brown, GA, "C65" barred oval cancellation of Carthagena, fine. S.G. Z43, £2,750. Photo £600-800
- 2404 ○ 2/- blue and 2/- milky blue, wing margin examples, each with circular dated cancellations; fine and attractive. S.G. 119, 120b £300-400

1867-83 HIGH VALUES

Die Proof



2405

2405 ⑥

5/- die proof in carmine on white glazed card (92x60mm) without markings; produced by De la Rue for the 1867 Paris Exhibition. There is some very minor discolouration around the edges, which is typical of the card used for these proofs. Exceptionally fine and unmounted. An important rarity as only one or two of each colour exist in private hands. Cat. £18,000. Photo

£4,000-5,000

PROVENANCE:
Chartwell, October 2011

Great Britain, 1867-83 High Values - *contd.*

Watermark Maltese Cross

- | | | |
|--------|--|----------|
| 2406 ○ | 5/- rose, Plate 1: CC with neat Liverpool c.d.s.; centred to the left, fine. S.G. 126, £675 | £60-80 |
| 2407 ○ | 5/- rose, Plate 1: FA, neatly cancelled by a superb Kilmarnock 1870 c.d.s.; centred low and part of the design is faded in the top left corner. Attractive. S.G. 126, £675 | £60-80 |
| 2408 ○ | 5/- pale rose Plate 1: DA, fairly well-centred and cancelled by central complete strike of 'FENCHURCH ST./ E.C.' for January 1st 1872; a fine used example S.G. 127, £675 | £100-150 |



2409

- | | | |
|--------|---|----------|
| 2409 ○ | 10/- greenish grey, BE, centred slightly to left and cancelled by Manchester c.d.s., a sound example. S.G. 128, £3,200. Photo | £250-300 |
|--------|---|----------|



2410

- | | | |
|--------|---|---------------|
| 2410 ® | £1 brown-lilac, DD imprimatur , imperforate with good to large margins, large part original gum; there is a tiny paper inclusion on the Queen's neck and a small mark on the gum on the left side. A fine example of this imprimatur. B.P.A. certificate (2011). Cat. £45,000. Photo | £8,000-10,000 |
| | PROVENANCE:
Chartwell, October 2011 | |



2411



2412



2413

- 2411 ○ £1 brown-lilac, GF, centred to lower left and cancelled by Charing Cross c.d.s; slightly soiled otherwise a sound example. S.G. 129, £4,500. Photo £500-600
- 2412 ○ £1 brown-lilac, HC, well-centred and cancelled by clear 'BELFAST' c.d.s., a fine example of this popular high value. S.G. 129, £4,500. Photo £800-1,000
- 2413 ○ £1 brown-lilac HE, centred to lower right, cancelled by "498" barred oval with remnants of blue crayon and some light staining. Scarce. S.G. 129 £4,500. Photo £400-500

Watermark Anchor, White Paper



2414



2415

- 2414 ○ £5 orange, AC, a well-centred example cancelled by 'GLOUCESTER' double ring date stamp for December 22nd. 1902; fine. R.P.S. Certificate (1976). S.G. 137, £3,500. Photo £600-800
- 2415 ○ £5 orange, AK, fairly well-centred and cancelled by 'GLASGOW' c.d.s., blue registration crayon at upper right and centre, otherwise a sound example of this popular stamp. S.G. 137, £3,500. Photo £500-700



2416



2417

- 2416 ○ £5 orange, DI, well-centred and cancelled by 'WIGAN' c.d.s. for December 20th 1899, a fresh and fine example of this popular high value. S.G. 137, £3,500. Photo £600-800
- 2417 ★ 1873-80 Watermark Garter 4d. grey-brown, Plate 17: LK, large part original gum with small gum bend and thin. Scarce. B.P.A. Certificate (1983). S.G. 154, £2,800. Photo £350-400

Great Britain - *contd.***1883-84 HIGH VALUES****Die Proof**

2418

2418 ⑥

2/6d. die proof with blank corner letters, in black on glazed card (92x60mm), endorsed "BEFORE HARDENING" and dated "5 APR 83", fine. Cat. £2,800. Photo

£400-600

Blued Paper

2419

x2419 ⑤

10/- cobalt, NA overprinted "SPECIMEN" type 9, large part original gum; there is a trivial and very light gum bend. Very fresh, a superb example. S.G. 177as, £5,500. Photo

£1,200-1,500

White Paper

2420 ○

5/- rose, AE, well-centred and cancelled by entire central strike of 'WEYMOUTH' for 26th September 1894 and 1902-10 5/- deep bright carmine, well-centred and cancelled by entire 'SHEPHERDS BUSH/ EXHIBITION' c.d.s.; a fine pair. S.G. 180 and 264

£200-250

2421 ★

10/- ultramarine, LB, large part original gum, very well centered with faint mark by Queen's nose, otherwise fine and fresh. S.G. 183, £2,250

£150-200

2422 ○

10/- ultramarine, a well-centred example cancelled by crisp centrally struck 'PLYMOUTH' c.d.s for November 16th. 1901, fine. S.G. 183, £525

£100-150

2423 ○

10/- pale ultramarine, KD, cancelled by crisp 'BRADFORD' c.d.s. S.G. 183a, £550

£100-150

1884

Watermark Crowns



2424

2424 ○

£1 brown-lilac, OC, hooded London cancellations, a sound example. S.G. 185, £3,000. Photo

£400-500



2425

2425 ○

£1 brown-lilac PC, well centred, cancelled by Manchester c.d.s. and indistinct boxed cancellation. Scarce. S.G. 185. Photo

£400-500



2426

2426 ○

£1 brown-lilac, QD, rectangular 'C.H.B./ G.P.O.' cancellation, registration crayon at foot. S.G. 185, £3,000. Photo

£250-350

2427 ○

£1 brown-lilac, RD, oval registered cancellations, a few creases and some soiling. S.G. 185, £3,000

£150-200

1888

Watermark Orbs



2428

2428 ○

£1 brown-lilac, LB, cancelled by boxed 'G.P.O.' and 'BURLINGTON HOUSE' c.d.s. Fine. S.G. 186, £4,500. Photo

£800-1,000

Great Britain - *contd.*

1887-1900 JUBILEE ISSUE



2429



2430

2429 ⑤

1½d. hand-painted essay in grey-lilac, pale and deep blue plus Chinese white, on card (83x117mm), endorsed "A" and marked "8 annas" which has been crossed through and "2½ annas" added. This is from a group for designs being considered for the new issue of India. Unique. Photo

PROVENANCE:
Chartwell, Octoner 2011

£2,500-3,000

2430 ★田

1/- green and carmine variety **watermark inverted** in a lower right corner block of four, lightly mounted on one stamp and in the margin only; there is some creasing in the corner margins. A rare and important multiple of this error which is believed to be the largest surviving. S.G. K41b. Photo

£2,500-3,000



2431

2431 ④⑤

£1 green, LB, overprinted 'specimen', well centered, fine unmounted mint. S.G. 212s, £1,100. Photo

£100-150



2432

2432 ★

£1 green, AB, large part original gum; diagonal crease, good colour. S.G. 212, £3,500. Photo

£300-500



2433

2433 ★

£1 green, JD, large part original gum; some vertical creasing and wrinkling. S.G. 212, £3500. Photo

£200-300



2434

2434 ★

£1 green, LB, large part original gum, lightly wrinkled and with small oil spot on reverse, otherwise attractive. S.G. 212, £3,500. Photo

£200-250

2435 ○

£1 green, AA, cancelled by central 'BELFAST' c.d.s. for September 17th 1895, fine and fresh. S.G. 212, £800

£150-200

2436 ○

£1 green, JB, cancelled by Registered ovals, slightly soiled in places, otherwise a sound example. S.G. 212, £800

£100-150

Great Britain - *contd.*

KING EDWARD VII ISSUES

1902-10 De la Rue

- 2437 ★ ½d. to 1/- part set of fifteen, part to large part original gum. S.G. 215-259 group, £1,300+ (as cheapest) £200-300



2438



2439

- 2438 ★田 1/- dull green and carmine, corner block of four from the lower left of the sheet, large part original gum and mounted on the upper pair only; a few minor gum wrinkles and very light gum bends in places, a handsome multiple. S.G. 257, £900+. Photo £150-250
- 2439 ★田 5/- bright carmine, block of four with large part original gum; light vertical bend affecting right hand vertical pair; nevertheless an attractive multiple. S.G. 263, £1,800. Photo £250-350



2440



2441

- x2440 ☉ £1 dull blue-green with top margin showing part of the central cross, there is a small thin patch in the top right corner of the margin, otherwise fresh and very fine, unmounted mint. Well centred and a surprisingly good example of this stamp. S.G. 266. Photo £1,200-1,500
- 2441 ★ £1 dull blue-green, large part original gum; light vertical bend at right. S.G. 266, £2,000. Photo £250-300
- 2442 ○ £1 dull blue-green, well-centred and cancelled by crisp 'GUERNSEY' c.d.s. for April 5th. 1911, a good example. S.G. 266, £825 £100-150



2443

2443 田 ㊞

1903 (c.) De La Rue Napoleon Bonaparte essays 1d. in black, in carmine and in blue on unmounted paper, top marginal blocks of four. Fine. Photo

£150-200



2444

2444 ㊞ ㊞

1911 Harrison, Perf. 14 1/2d. dull green, watermark inverted, in a complete booklet pane of six with the St. Andrew's cross label, perf. type E; unmounted mint. With choice perfs. all round. A magnificent example of this booklet pane. S.G. 268bw, £800. Photo

£300-500

1911-13 Somerset House



2445

2445 ★

£1 deep green, large part original gum; centred a little low, fresh colour. S.G. 320, £2,000. Photo

£300-400

2445A ○

£1 deep green, light c.d.s; a good example of this popular high value. S.G. 320, £750

£100-150

Great Britain, King Edward VII Issues - *contd.*

2446 ④ ⑤

A quite remarkable collection of mostly mint multiples in a large album, comprising 1902-10 De La Rue ½d. M1 lower two rows of the sheet with the two displaced cliché varieties, 2d. M12(4) irregular block of 14, 2½d. M16 (1) single but with the selvedge of the entire lower row, . M29(2) row of 12 from the foot of the sheet, 1911 Harrison, perf. 14 ½d. M3(4) and 1d. M6(5) each a strip of twelve from the foot of the sheet, 1911-13 Somerset House 1½d. M10(2) strip of twelve from the foot of the sheet, 1½d. M10(4) and M10(5) each in blocks of 36 (the lower three rows of the sheets), 2d. M13(1) and M13(2) each in a row of twelve from the foot of the sheet, M13(3) block of 24, the lower two rows of the sheet, . M30(1) sheet of 120, 6d. M33(5) and M33A(5) each in a row of twelve from the foot of the sheet, 7d. M38(1) row of twelve from the foot of the sheet, 9d. M41(5) block of 40 (2 panes of 20), 10d. M44(2), M44(6) and 1/- M47(1) each in a row of twelve from the foot of the sheet; chiefly unmounted mint, chiefly fresh colours and very fine. A exceptional group.

£10,000-15,000

1911 CORONATION AERIAL POST

Postcards

2447 ④ ⑤

Six olive green cards, Dies 1-6, five franked 1911 ½d., the last franked 1911 ½d. and 1d., all with London Sept. 9 cancellations; the Die 2 card with crease at top right. Scarce as a complete set of Dies. Photo

£250-300

2448 ④ ⑤

Dark brown card, addressed to Cornwall and signed on the face by Warwick Lendon (who was responsible for the artwork of the cards, based on the rough design by D. Lewis Poole), franked 1911 ½d. with Die 4 cancellation of 9 Sept.; the card with small tear at top and corner creased. Rare. Photo

£100-120

2449 ④ ⑤

Light brown card, addressed to London and bearing three Control singles ½d., ½d. and 1d., London Die 4 cancellations of 9 Sept.; fine and unusual with three stamps addressed to the U.K. Photo

£100-120

2450 ④ ⑤

Light brown card with handwritten Army & Navy Co-Operative Society advertisement, addressed to Midhurst and re-addressed to Littlehampton, franked 1911 ½d. with London Die 2 cancellation of 9 Sept. and with Eastbourne c.d.s. of 16 Sept. alongside; fine and rare. Photo

£300-350

SPINK LIVE

Spink Live is now running on a new and improved bidding platform

Accessible online through www.spink.com and also available iOS and Android devices

Bidding on 'Spink Live' remains free of charge



Download on the App Store
GET IT ON Google Play



Click to Login / Register

Tick your Interests

Scroll the Lots

Slide to Bid

MY ACCOUNT

- Login
- Consign An Item
- Watched Lots
- My Bids

- ☒ Medals
- ☒ Stamps
- ☐ Watches
- ☒ Whiskies & Spirits
- ☒ Wines

LOT 3: 12
SEAL, 8 songs, including all 1911-1913

LOT 4: 12
RANDY CRAWFORD & JOE SAMPLE, 4 1911-1913

LOT 2010 - CURRENT BIDDING

Slide to bid €

CURRENT HISTORY

For any enquiries or further assistance please contact:
Tel: +44 (0)20 7563 4112 | Email: spinklivesp@spink.com



WHERE HISTORY IS VALUED



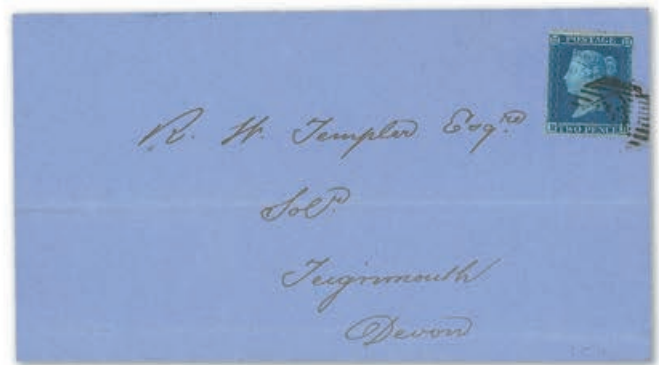
2358



2359



2368



2372



Ex 2447



2448



2449



2450

Great Britain, 1911 Coronation Aerial Post, Postcards - *contd.*



2451

2451 ④ ☒

Violet Privilege Windsor card, addressed to Highbury and franked 1911 ½d. with Windsor Die I cancellation of 16 Sept.; the card with light crease and slightly rounded corners. Rare. Photo

£250-300

Envelopes



2452

2452 ④ ☒

Light green Proof envelope, addressed to Reading, franked Edward 1d. with Windsor Die 2 cancellation of 16 Sept.; fine and rare. Photo

£250-300



2453

2453 ☉✉

Violet privilege London envelope, addressed to "The Central London Sick Hospital" in Hendon (where Hubert was taken after his accident), franked 1911 1d. with Windsor Die 2 cancellation of 16 Sept.; fine and rare. Photo

£400-450

2454 ☉✉

Purple-brown London envelope, addressed to Cornwall and franked 1911 1d. with London Die 3 cancellation of 9 Sept., mounted in a frame surrounded by cameos of the four pilots and with the message portion affixed to the reverse of the frame. A little faded but fine and possibly unique

£100-120

Ephemera



2455

2455 ☒

Red invitation card to the 9 Sept. inauguration, Number 88 issued to Mr. W.G. Gates (Assistant secretary at the G.P.O. in London and a member of the Board of Directors of Hendon Aerodrome); the card very slightly stained and faded but extremely rare

2456 ☒

Red Car Parking card, No. 88 (matching the Hendon invitation, see previous lot); slightly faded; fine. Photo

£260-360

Great Britain - *contd.*

KING GEORGE V ISSUES

1912-24 Watermark Royal Cypher



Ex 2458

x2458 ★

½d. to 1/- a complete set of sixteen with both 2d., each stamp variety **inverted watermark**, large part original gum; fresh and fine. A very difficult set to assemble. R.P.S. certificates (2003) for 5d., 9d. olive-green and 10d. S.G. 351wi-395wi, £5700. Photo

£1,500-2,000



2459

2459 ㊟ ©

1d. bright scarlet, imperforate block of eight from the right of the sheet, each overprinted 'CANCELLED' (type 24), good margins at top and left, close at foot; large part original gum, mounted on one stamp only, a few minor gum wrinkles in places not affecting the appearance. Specialised N16x, £720+. Photo

£150-200

2460 ★

9d. agate and 1/- bistre, both with **watermark inverted**, the former unmounted mint and the latter large part original gum. S.G. 392wi. and 395wi., £490

£100-150

1913 Waterlow

x2461 ★

10/- indigo-blue, lightly mounted mint; minor gum wrinkle, well centred. A good example of this shade. S.G. 402, £1,000

£200-250

x2462 ★

10/- indigo-blue, large part original gum; centred a fraction low, rich colour and good perms., trivial gum wrinkle. S.G. 402, £1,000

£150-200



2463

- 2463 田 10/- indigo-blue in a top right corner block of four, unmounted mint (there is a faint hinge mark in the top margin where the ink was not applied); some light gum ageing, centred low and a couple of minor gum wrinkles. These do not detract from this very impressive block. Specialised N69 (1). Photo £2,500-3,000
- x2464 ★ 10/- indigo, large part original gum; fair centring and good perfs., some very slight gum ageing. A good stamp. Specialised N69 (2), £1,300 £200-250
- 2465 ○ 10/- indigo-blue, centered to lower left and cancelled by crisp c.d.s., a good example. S.G. 402, £475 £80-120



2466

- x2466 ★ £1 green in a bright shade, lightly mounted mint; centred a fraction low and right, good perfs. An attractive stamp. S.G. 403, £2,800. Photo £700-900



2467

- x2467 ★ £1 green, large part original gum; well centred, a few slightly irregular perforations. Fine appearance. S.G. 403, £2,800. Photo £500-600

Great Britain, King George V Issues, 1913 Waterlow - *contd.*



2468

2468 ○

£1 green, fairly well-centred and cancelled by a central strike of 'GUERNSEY/ 17 FE/ 14' c.d.s.; fine. S.G. 403, £1,300. Photo

£300-400



2469

x2469 ★

£1 dull blue-green, lightly mounted mint; centred a little low; fair to good perms., a good stamp. S.G. 404, £2,800. Photo

£600-800



2470

x2470 ★

£1 dull blue-green, lightly mounted mint; centred low, there are a couple of light wrinkles, good colour and perms. S.G. 404, £2,800 . Photo

£500-600



2471



2472

x2471 ★

£1 deep green, lightly mounted mint; centred low with good perms. A very good example of this shade. R.P.S. Certificate (1976). Specialised N72 (2), £4,500. Photo

£700-900

x2472 ★

£1 deep green, large part original gum; good centring and perms., light even gum toning. G. Oliva certificate (1960). Specialised N72 (2), £4,500

£300-400

1915 De La Rue



2473

2473 ㊦

2/6d., 5/- and 10/-, the set of three values in **imperforate blocks of four** each from the upper left corner of the sheet with "N/P/IMPRIMATUR" handstamp on reverse, unmounted mint; superb. Specialised listed but unpriced. Photo

£16,000-20,000

PROVENANCE:
Hassan Shaida, April 1993
Chartwell, May 2012

Great Britain, King George V Issues, 1915 De La Rue - *contd.*



2474

2474 ㊦

2/6d. imprimatur block of four from the upper left corner of the sheet and showing reversed "12" in the margin at top; unmounted mint, "N/P/IMPRIMATUR" handstamps on reverse. Superb and rare. Photo

£6,500-8,500

PROVENANCE:

Sir Gawaine Baillie, September 2005



2475



2476

- 2475 ★ 2/6d. yellow-brown, original gum and well centred, showing major re-entry, Plate HV3, [R2/1], attractive and scarce. R.P.S. Certificate (1974). S.G. 406a, £2,000. Photo £400-500
- x2476 ★ 2/6d. cinnamon-brown, large part original gum; creased corner perf., good perfs. Specialised N64 (9), £2,500. Photo £250-300



2477

- 2477 ★ 5/- pale carmine (worn plate), **horizontal pair** from the lower left corner of the sheet showing security line in the margin at foot, original gum; fine and most unusual. Specialised N67(3). Photo £700-1,000



2478



2479

- x2478 ☉ 10/- blue with top sheet margin, lightly mounted in the margin only; quite well centred and clearly shows the marginal watermark which is centred low. There is some slight gum ageing, good perfs. and an attractive stamp. R.P.S. Certificate (2000). S.G. 412. Photo £1,200-1,500
- x2479 ★ 10/- blue with top right corner margins, large part original gum; centred right, good perfs., light even gum toning. S.G. 412, £3,250 £200-300

Great Britain, King George V Issues, 1915 De La Rue - *contd.*



2480

2480 ★

10/- bright ("Cambridge") blue, **horizontal pair from the lower right corner of the sheet**, original gum, one of a very few recorded multiples of this rare shade. Brandon Certificate (2007). Specialised N70(3), £19,000+. Photo

£5,000-7,000



2481

x2481 ★

10/- bright (Cambridge) blue, large part original gum, with lower left corner margins; pencil notation in the margin and light gum ageing. Brandon Certificate (2007). Specialised N70 (3), £9,500. Photo

£800-1,000



2482



2483

x2482 ★

10/- pale blue, lightly mounted mint; centred a little high and left; fresh and good perfs. P.E. (G.B.) certificate (1994). Specialised N70 (4), £3,500. Photo

£500-600

x2483 ★

10/- pale blue, lightly mounted mint; good centring and perfs., a good stamp. Specialised N70 (4), £3,500. Photo

£500-600



2484

2484 田

10/- deep (intense) bright blue, **block of four**, unmounted mint, a couple of short perfs. at lower right but probably the finest of the few existing blocks of this striking shade. R.P.S. Certificate (1985). Specialised N70(5), £50,000+. Photo

£10,000-12,000



2485



2486



2487

x2485 ★

10/- deep (intense) bright blue, large part original gum; well centred, a couple of slightly short perfs. Specialised N70 (5), £8,000. Photo

£1,200-1,500

x2486 ★

10/- deep bright blue, lightly mounted mint; with left sheet margin (tear in the margin), centred a little high and left. Specialised N79 (6), £4,000. Photo

£700-800

x2487 ★

10/- deep bright blue, lightly mounted mint; fair centring. A good stamp. Specialised N70 (6), £4,000. Photo

£700-900



2488



2489



2490

x2488 ★

10/- bright blue, lightly mounted mint; centred a fraction low and left, some light gum ageing. Specialised N70 (7), £3,750. Photo

£500-700

x2489 ★

10/- bright blue, large part original gum; well centred and good perfs., some light gum ageing. Specialised N70 (7), £3,750. Photo

£500-600

x2490 ★

10/- deep blue (worn plate), lightly mounted mint; centred a fraction low, fresh. Specialised N70 (2), £3,750. Photo

£500-700

Great Britain, King George V Issues - *contd.*

1918-19 Bradbury, Wilkinson

- 2491 ★ 10/- dull grey-blue, centred slightly to left, lightly mounted mint. S.G. 417, £475 £100-150



2492

- 2492 ⊕田 10/- blackish-blue ("Steel blue"), **block of four from the upper left corner of the sheet**, unmounted mint, small thin in the margins at top, fresh and fine. A rare block. R.P.S. Certificate (1990). Specialised N71(3), £9,000+. Photo £1,800-2,200

1924-26 Watermark Block Cypher



2493

- 2493 ⊗ 1/2d. green variety **no watermark**, unmounted mint; fine and rare. Only 24 examples found from the bottom two rows of a sheet with control D25. S.G. 418c. Photo £1,000-1,500
- 2494 © 6d. purple, Harrison printing on chalky paper overprinted 'SPECIMEN', lightly mounted. Specialised N41s £100-150

1929 Postal Union Congress



2495

- | | | |
|--------|---|----------|
| 2495 ★ | £1 black, large part original gum; a good example. S.G. 438, £750. Photo | £250-300 |
| 2496 ★ | £1 black, large part original gum; some very light gum ageing. S.G. 438, £750 | £180-240 |



2496A

- | | | |
|----------|---|----------|
| x2496A ☒ | 1935 (2 Nov.) envelope (slightly truncated at left) from London to Brazil, bearing £1 black plus 1924 1/- and 1934 re-engraved 2/6d., 5/- and 10/-, all cancelled by double-ring d.s. and showing, on reverse, Paris transit datestamp. Photo | £400-500 |
| 2497 ○ | £1 black, cancelled by a small part strike of c.d.s. across the top left corner. S.G. 438, £550 | £150-180 |

Great Britain - *contd.*

KING EDWARD VIII



— 2497A —

2497A ⑤

1/2d. green, 1d. scarlet, 1 1/2d. red-brown and 2 1/2d. bright blue, each overprinted 'SPECIMEN' (type 32), all with part to large part original gum. Specialised P1v, P2t, P3v and P4s var. unpriced. Photo

£500-600

QUEEN ELIZABETH II ISSUES



2498

2498 ④

1961 Commonwealth Parliamentary Conference 6d. variety **gold omitted**, a single example in a vertical strip of three with a partial omission and normal, unmounted mint; there are a couple of minor gum bends. A good progressive strip. S.G. 629a, £2,200+. Photo

£600-800

2499 ④

1970 British Rural Architecture 1/- with **new blue omitted** and 1972 Christmas Angels 3d. with **bright green omitted**, both unmounted mint and offered with normal for comparison. S.G. 817a and 914b, £375

£70-90

2500 ④

1971-96 12 1/2p. light emerald, (one centre band), phosphorised paper 15 1/2p. pale violet and 16p. olive-drab, **imperforate horizontal pairs from the sides of the sheets**; fine unmounted mint and 1967-70 1/6d. gum Arabic horizontal pair, variety **greenish blue omitted**, used with 1d. light olive and 1946 Victory 3d. on commercial envelope registered from Brighton to Twickenham; the envelope with tape stains not affecting the stamps; fine. S.G. 743a, unpriced used and S.G. X898a, X948a, X949a

£100-150



2501ex

2501 ④

1973 Inigo Jones, 3p. variety **deep mauve printed double** in a horizontal, se-tenant pair, unmounted mint. A rare stamp, Pierron records only three pairs. B.P.A. Certificate (2013). S.G. 935ac, £5,000. Photo

£1,500-2,000



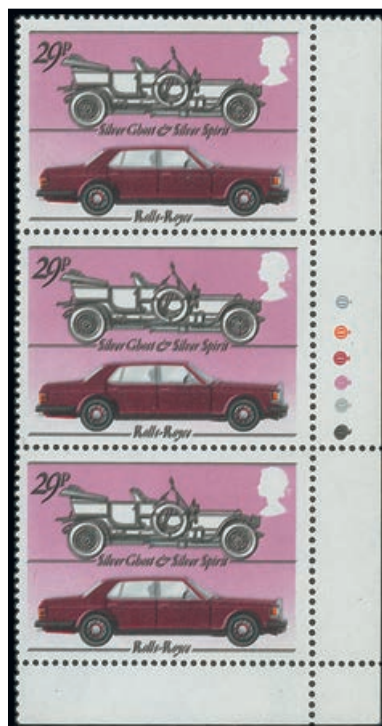
2502

2502 ④

1978 Christmas, unissued 5p. essay of choirboys, on gummed and perforated paper and affixed into a Harrison & Sons presentation folder. In addition to the issued set of four there are two addition trials of the 9p. value with dark grey and sage-green border. The reverse of the folder bears the reference numbers for each stamp, notably "5p 1011; 13p. 4105; 11p. 3218; 9p. 3286, 4270 and 4398; 7p. 29782. The top two 9p. stamps at the top of the folder have been affixed with hinges, one has the reference number written in the margin, the other in pencil on the reverse. The four stamps which have been ticked are in the issued colours, however, these do vary slightly from the issued stamps which is particularly noticable on the printing of the queen's head. Note that the 7p. stamp has become detached and this has been left off the card as it demonstrates how badly the hinges were applied to the five stamps on the lower portion, accounting for some of the paper buckling seen on the 5p. stamp. A very rare and appealing group. Photo

£2,000-3,000

Great Britain, Queen Elizabeth II Issues - *contd.*



2503



2504

- 2503 ☼ 1982 29p. British Cars 29p. variety **black printed quadruple** in a lower right corner vertical strip of three showing the colour traffic lights, unmounted mint. A stunning positional block of the only fifteen examples recorded. S.G. 1201a, £3,300+. Photo £800-1,000
- x2504 ☼ 1983 Christmas 12½p. variety **imperforate**, the lower three stamps in an irregular block of nine with three imperf./blind perf., unmounted mint; a little ragged in places where the stamps were torn off, but these are well clear of the designs. A fine and important transitional block. Pierron records only six mint imperforate pairs. S.G. 1231a. Photo £800-1,000



2505

x2505 田

1985 Royal Mail Service 34p variety **imperforate between vertical pair**, two pairs in a block of four with interpanneau margin at left, unmounted mint. There are a couple of light tone spots in the margin and tiny indentations caused by the edge of the perf. pins. Only 20 pairs recorded/ Brandon Certificate (1997). S.G. 1293a, £3,400+. Photo

£800-1,000



2506



Ex 2508

2506 *

1991 Ordinance Survey Ham Street **26p. error of value**, unmounted mint, fine and scarce; offered with normal. See footnote after S.G. 1581, £5,000. Photo

£2,000-3,000

x2507 *

1994 Christmas 19p. Mary and Joseph, marginal **imperforate** horizontal pair, fine unmounted mint. S.G. 1843a, £175

£60-70

x2508 *

1999 (May) Millennium Series 19p. Woven Threads with **bronze (Queen's head) and phosphor omitted**, superb unmounted mint. With normal for comparison. S.G. 2088ay, £675. Photo

£250-300

Great Britain - *contd.***BOOKLETS**

2509

- 2509 ☉ 1940 5/- (edition 7), generally fine; a couple of panes with the perfs. fractionally clipped at top. A good example of this scarce book. S.G. BD25. Photo £500-600

OFFICIALS**Inland Revenue**

- 2510 ★ 1880-81 6d. grey, Plate 13: HC, part original gum; some light toning at foot. Wenvoe Certificate (2018). S.G. O4, £575 £60-80



2511

- 2511 ☉ Issues of 1884-88: £1 brown-lilac, LB, overprinted 'SPECIMEN', large part original browned gum with thin and light soiling. A scarce stamp nonetheless. Concise O11s, £5,000. Photo £300-350
- 2512 ★ 1887-92 1/- green, small part original gum; good colour. Wenvoe Certificate (2020) which states "paper slightly toned". S.G. O15, £1000 £100-120

Office of Works

2513

- 2513 ★ 1902-03 2½d. ultramarine, large part original gum; bright colour, fresh and fine. B.P.A. (1975) and Wenvoe (2018) certificates. S.G. O39, £3400. Photo £600-800

Government Parcels

- 2514 ★ 1887-90 6d. purple on rose-red and 9d. dull purple and blue, part original gum. Wenvoe certificates 6d. (2018), 9d. (2020). S.G. O66-67, £700 £80-100

Board of Education

- 2515 ★ 1902-04 ½d. blue-green and 1d. scarlet, large part original gum or unmounted mint (1d.); ½d. with trivial gum wrinkle. Both with Wenvoe certificates (2020). S.G. O83-84, £360. (2) £80-100



2516

- 2516 ○ 1902 5d. dull purple and blue cancelled by a part strike of circular parcel cancellation; shows broken “N” of “EDUCATION”. A good stamp. Wenvoe Certificate (2019). S.G. O81, £1500. Photo £250-300



2517

- 2517 © 1902-04 1/- dull green and carmine handstamped “SPECIMEN” type 16, large part original gum; there is a minor gum bend at foot. An exceptional and very fresh example of this rare stamp. Only five or six recorded in private hands. B.P.A. Certificate (2008), S.G. MO27s. Photo £8,000-10,000

Great Britain - *contd.*

Admiralty Official



2518

- 2518 ★ 1903 2d., 2½d. and 3d. part to large part original gum; 2d. light gum creases, 3d. is very fine. Wenvoe certificates 2d. and 2½d. (2018), 3d. (2020). S.G.. O104-106, £1250. Photo

£240-280

COLLECTIONS AND RANGES

- 2519 Collection in five albums or stockbooks and loose contained in a carton, including a good range of 1841 imperf. 1d. with multiples, 1870 ½d. Plate 9, 1847-54 embossed 1/-, 10d., 6d. pair and two singles, all cut square, 1855-57 watermark small Garter 4d. (9), 1/-, 1862-64 9d. (3), 1/- (3), 1867-80 3d. Plate 7 block of four, 1867-83 watermark Cross 5/- part original gum, 1883-84 10/- (2) unused or part original gum, 1855-57 1/- (3, one with c.d.s.), 1867-80 2/- blue (2), 1873-80 watermark Garter 4d. vermilion, 18893 or 1884 4d. to 1/- part original gum or unused, 1887 £1, Edward VII with values to £1 (3), 1924-26 sideways watermark set, 1929 P.U.C. £1 fine used, 1934-36 2d. sideways watermark, 1934 re-engraved 2/6d. to 10/- used, 1937-47 sideways and inverted watermark sets, 1939-48 10/- dark blue (2 mint, used block of six), 1948 Wedding £1 6), 1951 set (2 mint), later issues, etc., mixed condition but a useful lot
- 2520 Selection housed in a blue stockbook, including a range of 1841-53 1d., 1841 2d. Plate 3 pair, 1870-79 ½d. Plate 9, 1870-74 1½d. (7), 1855-57 watermark small Garter 4d. (6), Medium Garter 4d. (9), Large Garter 4d. part original gum, etc., chiefly used, mixed condition but very many fine
- 2521 1840-78 postal history collection in three albums or stock books including 1840 (27 Aug.) entire to Inverness bearing 1d. black (Plate II) with good to tight margins tied by fine red Maltese Cross, 1d. black entire with possible blue Maltese Cross, 1864 envelope to Gibraltar bearing 1862-64 1/- green, marked 'Via France' and with framed 's' marking to denote travel via Spain, one album of 1d. red covers (160+), one to Hertfordshire with an illustration of a horse, a green stock book of 1881 1d. lilac used on cover with one mourning envelope to New Brunswick bearing 1d. pair and ½d., some covers with control numbers, 1875 envelope to New Brunswick bearing 6d. grey, and one stock book of 1970s official markings cut from mail.

£2,500-3,000

£600-800

£400-500

2522	1840-83 a balance collection housed in six ring binders, albums or stock books including a mixed group of mint and used stamps 1841-84 all lettered 'LB' including 1840 entire to Northumbria bearing 1d. black, 1841 1d. red cancelled by clear Maltese Cross numbered '8', another cancelled by two strikes of a blue Maltese Cross, various plate numbers, some in blocks, 1858-76 2d. blue plate 7 mint, some faults, 1865-67 4d. deep vermilion plate 11, mint, 1867-80 2/- blue used (2), 1880-83 1/- orange-brown plate 13, mint with horizontal crease, 1883-84 2/6d. lilac on white paper, large part original gum and 5/- used; other albums with various values including 1840 1d. black mint single (cut into) and used (3), a range of 1870-79 ½d. red, lower value KGV, KGVI and QEII, two folders of QEII First Day Covers 1953-83, and a small group of GB used abroad.	£600-700
2523 ☒	1913-22 collection of Military mail, seventy-one covers or cards contained in a black "Concertina" binder, including much from the Dardanelles Campaign, largely stampless and showing a range of British Army and Field Post Office single and double-ring datestamps including D54, DY, NL1, SWY2, SX2, SX3, SX4, SX5, SX8, SX11, SZ5 and W2, Indian Army Telegraph datestamps with codes MW, YD and YDH, Indian F.P.O. 409 (2), 1912 envelope with Salonika Greek P.O. intaglio seal Arms h.s., British Army Post Office at Constantinople d.s. (8, two registered), French Tresor et Postes 505 cover apparently recovered from mail torpedoed in the Mediterranean, one from Pera to a P.O.W. at Alexandria, censor marks throughout. An interesting lot	£100-200
2524	1914-QEII, a mint Commonwealth collection over two stockbooks including various sets and part sets KGVI-QEII and control blocks on stock cards with Ireland Provisional Government, British Levant, Tangier and Morocco Agencies in various overprints.	£250-300
2525 ☒	1924-87 collection of First Day Covers in five albums housed in a box including a number of better items such as King George V 1924 (23 Apr.) Empire Exhibition, King Edward VIII 1936 (1 Sept.) and (14 Sept.), King George VI 1939 (1 May) 9d., 10d. and 1/-, 1948 (1 Oct.) £1, 1948 Silver Wedding, 1951 (3 May) ½d. to 2½d. blocks of four and 2/6d. to £1 on large cover, Queen Elizabeth II 1954 (8 Feb.) 9d., 10d. and 11d., 1955 (1 Sept.) 10/- and £1 etc; in chiefly fine condition	£800-1,000
2526	1924-70s mint collection of five folders comprising GKV, KGVI and QEII control blocks and singles. 800+ blocks of four or larger in fine condition. A valuable and extensive group.	£750-800
2527	Collection of chiefly Queen Elizabeth II Machin type in five albums contained in a carton, including unmounted mint Plate blocks, elliptical perfs., self adhesives, Regionals, National emblems, values to £1 (50), £1.05 (30), £1.10 (30), £1.17 (36), £1.25 (30), £1.28 ((30), £1.33 (30), £1.35 (30), £1.40 (30), £1.45 (30), £1.46 (6), £1.47 (6), £1.50 (24), £1.52 (6), £1.55 (30), £1.57 (6), £1.60 (6), £1.65 (6), £1.88 (12), £1.90 (6), £2 (30), £2.15 (6), £2.25 (12) £2.27 (6), £2.30 (6), £2.45 (6), £2.55 (6), £2.65 (6), £2.80 (6), £3 (24), £3.15 (6), £3.30 (6), £3.45 (6), £3.60 (6), £5 (30), N.V.I., some commemoratives, etc., chiefly fine	£500-600

END OF THE SALE

SPINK

WHERE HISTORY IS VALUED






THE "DUBOIS" COLLECTION OF JAMAICA POSTAL HISTORY AND STAMPS - PART II



Coming Early 2021

For more information please contact
Nick Startup | +44 (0)207 563 4073 | nstartup@spink.com
Josh Barber | +44 (0)207 563 4080 | jbarber@spink.com

SPINK LONDON | 69 Southampton Row | WC1B 4ET | United Kingdom

WWW.SPINK.COM Follow us on social media: #SPINK_AUCTIONS     

SPINK

LONDON
1666

Sale Venue:

The Royal Philatelic Society London
15 Abchurch Lane
2nd Floor
London EC4N 7BW
tel: +44 (0)20 7563 4121/4005
fax: +44 (0)20 7563 4037
email: auctionteam@spink.com

WRITTEN BIDS FORM

This form should be sent or faxed to the Spink auction office in advance of the sale. References for new clients should be supplied in good time to be taken up before the sale. Bids received later than one hour before the start of the sale may not be processed.

**STAMPS AND COVERS
OF GREAT BRITAIN**
Including the Windsor Collection

21 JANUARY 2021
LONDON

SPINK
Auctioneers & Dealers

NAME _____

ADDRESS _____

POSTCODE _____

69 Southampton Row, Bloomsbury,
London WC1B 4ET
tel: +44 (0)20 7563 4108/4005
fax: +44 (0)20 7563 4037
email: auctionteam@spink.com

YOU CAN ALSO BID IN REAL TIME ON SPINK LIVE.
PLEASE DOWNLOAD SPINK LIVE APP FROM THE
APP STORE OR VISIT WWW.SPINK.COM,
REGISTER AND LOG INTO THE SALE.

SALE TITLE

**Stamps and Covers of Great Britain,
including the Windsor Collection**

DATE

**Thursday 21 January 2021
at 10.00 a.m.**

CODE NAME

CASSIDY

SALE NO.

21012

I request Spink, without legal obligations of any kind on its part, to bid on the following Lots up to the price given below. I understand that if my bid is successful the Purchase Price will be the sum of the final bid and Buyer's Premium as a percentage of the final bid, any VAT chargeable, also postage charge and a fee for paying by card. The Rate of Buyer's Premium is 20% of the final hammer price of each lot. I understand Spink will pursue me for payment for any successful bid. In addition, I understand and consent that Spink may share my personal details relating to the default with other auction houses and live bidding platforms to protect themselves from such defaults.

All bids shall be treated as offers made on the Terms and Conditions for Buyers printed in the catalogue. I also understand that Spink provides the service of executing bids on behalf of clients for the convenience of clients and that Spink will not be held responsible for failing to execute bids. If identical commission bids are received for the same Lot, the commission bid received first by Spink will take precedence. Please note that you will not be notified if there are higher written bids received.

**BIDDERS PLEASE NOTE OUR EXTENSION CLAUSES IN OUR TERMS AND CONDITIONS FOR BUYERS
PLEASE PRINT CLEARLY IN BLOCK LETTERS AND ENSURE THAT BIDS ARE IN STERLING**

Lot Number (in numerical order)	Price Bid £ (excluding Buyer's Premium)

Lot Number (in numerical order)	Price Bid £ (excluding Buyer's Premium)

Lot Number (in numerical order)	Price Bid £ (excluding Buyer's Premium)

☐ Please hold my purchased lots for collection

TEL. HOME _____ TEL. OFFICE _____

FAX _____ E-MAIL _____

SIGNATURE _____ VAT NUMBER _____

☐ I agree to receive notifications about Spink auctions, news and events via email and direct mail

☐ I agree to receive marketing notifications related only to the following categories (please select as appropriate)

**Autographs / Banknotes / Bonds & Shares / Books / Coins / Comics / Handbags / Jewellery / Maps / Medals / Stamps / Watches /
Whiskies & Spirits / Wine / Corporate News & Events**

We will use the personal information you provide to us as set out in our privacy notice available at www.spink.com/privacy-policy

Continued ...

At the time of printing, the Terms and Conditions for Buyers for sales taking place after 1 January 2021 are not yet available.

This sale's Terms and Conditions for Buyers will be published on our website after 1 January 2021.

SPINK

WHERE HISTORY IS VALUED

SALE CALENDAR 2020/2021

STAMPS

7-27 January	William Hallatt Rhodesia Covers and Cancellations, Part 2 e-Auction	London	21110
19 January	Important Stamps of the British Commonwealth	London	21013
19/20 January	The Philatelic Collectors' Series Sale	London	21010
20 January	The 'Lionheart' Collection of Great Britain and British Empire - Part XIV	London	21011
21 January	Stamps & Covers of Great Britain, including the Windsor Collection	London	21012
21 January	The Guadalajara Collection	London	21043
27 January	The Philatelic Collectors' Series e-Auction	New York	176
23 February	Stamps and Covers of South East Asia	London	21014

COINS

19 Nov-14 December	World Gold Coins e-Auction	London	20105
4-17 December	Spink Numismatic e-Circular 6: Historical and Commemorative Medals	London	20126
14 December	The 'E Pluribus Unum' Auction	London	20555
22 Dec-12 January	Spink Numismatic e-Circular 6 Part I: The Frank Viles Collection of Sixpences	London	21118
22 Dec-13 January	Spink Numismatic e-Circular 6 Part II: The Gentleman Collection of Gunmoney	London	21119
23 Dec-13 January	Spink Numismatic e-Circular 6 Part III: Russian Coins	London	21120
29 Dec-10 January	The Numismatic e-Auction	Hong Kong	CSS58
8/9 January	Banknotes, Bonds & Shares and Coins of China and Hong Kong	Hong Kong	CSS57
11-26 January	English and World Crown Sized Silver	London	21117
12 January	The Tony Abramson Collection of Dark Age Coinage	London	21000
17 January	The Sir Rodney Sweetnam KCVO CBE Collection of English Gold Coins and Other Properties	London	21004
17 January	The Numismatic Collector's Series Sale at NYINC	London	367
19-29 January	The Numismatic Collector's Series e-Auction	New York	368
18 Feb-18 March	Spink Numismatic e-Circular 7: The Eccles Collection of English Coins	London	21121
31 March	Coins and Commemorative Medals: Spring Auction	London	21005

BANKNOTES

23 Dec-14 January	World Banknotes e-Auction	London	21136
29 Dec-10 January	The Numismatic e-Auction	Hong Kong	CSS58
8/9 January	Banknotes, Bonds & Shares and Coins of China and Hong Kong	Hong Kong	CSS57
15 January	World Banknotes NYINC	London	366
19-29 January	The Numismatic Collector's Series e-Auction	New York	368
21/22 April	World Banknotes	London	21008

MEDALS

29 Dec-10 January	The Numismatic e-Auction	Hong Kong	CSS58
14/15 April	Orders, Decorations and Medals	London	21001

BONDS & SHARES

29 Dec-10 January	The Numismatic e-Auction	Hong Kong	CSS58
8/9 January	Banknotes, Bonds & Shares and Coins of China and Hong Kong	Hong Kong	CSS57
26 Nov-15 December	Bonds and Share Certificates of the World e-Auction	London	20130
2-16 February	Bonds and Share Certificates of the World e-Auction	London	21141
7-27 April	Bonds and Share Certificates of the World e-Auction	London	21142

HISTORICAL DOCUMENTS

21 Jan-4 February	Autographs & Documents e-Auction featuring the Mike Roth Aviation Collection Part II	New York	369
-------------------	--	----------	-----

LIFESTYLE COLLECTABLES

23-30 August	Fine Whisky & Rum E-Auction	Hong Kong	SFW35
3-14 December	Estates & Collections e-Auction	New York	365

The above sale dates are subject to change

Spink offers the following services:

- VALUATIONS FOR INSURANCE AND PROBATE FOR INDIVIDUAL ITEMS OR WHOLE COLLECTIONS -
- SALES ON A COMMISSION BASIS EITHER OF INDIVIDUAL PIECES OR WHOLE COLLECTIONS -





BY APPOINTMENT TO
HER MAJESTY THE QUEEN
Sole Auctioneers & Valuers
Sole Agents for the
Sole Auctioneers & Valuers
Sole Agents for the



BY APPOINTMENT TO
HER MAJESTY THE QUEEN
Sole Auctioneers & Valuers
Sole Agents for the
Sole Auctioneers & Valuers
Sole Agents for the

SPINK
FOUNDED
1666

WHERE HISTORY IS VALUED

STAMPS COINS BANKNOTES MEDALS BONDS & SHARES AUTOGRAPHS BOOKS
WINE & SPIRITS HANDBAGS COLLECTIONS ADVISORY SERVICES SPECIAL COMMISSIONS

69 Southampton Row, Bloomsbury, London WC1B 4ET
www.spink.com