
**THE GARY DIFFEN COLLECTION OF
AUSTRALIAN COLONIES ERRORS
PART 1 - NEW SOUTH WALES,
QUEENSLAND, SOUTH AUSTRALIA**



29 APRIL 2020
LONDON

SPINK

WHERE HISTORY IS VALUED



THE GARY DIFFEN COLLECTION OF AUSTRALIAN COLONIES ERRORS, PART 1 NEW SOUTH WALES, QUEENSLAND, SOUTH AUSTRALIA

Sale Venue:

This auction is conducted behind closed doors

Spink London

69 Southampton Row

Bloomsbury

London

WC1B 4ET

tel +44 (0)20 7563 4005 fax +44 (0)20 7563 4037

Vat No: GB 791627108

Sale Details | Wednesday 29 April 2020 at 10.00 a.m.

When sending commission bids or making enquiries,
this sale should be referred to as **ERROR - 20030**

Additional scans can be found on our website.

Please contact our specialist for condition report or for further information on any lot.

Follow the auction and Bid with SpinkLive like you were in the room. Telephone and commission bidding are also welcome.

The above details are subject to restrictions and changes, please look out for updates on our website.

Live platform | **SPINK**  LIVE

Your Specialist for this Sale



Nick Startup
nstartup@spink.com
+44 (0)20 7563 4073

Bids

Benedetta Fusco
Dora Szigeti
auctionteam@spink.com
+44 (0)20 7563 4108/4005
fax +44 (0)20 7563 4037

Internet Bidding

Michael Lewis
support@spink.com
+44 (0)20 7563 4090

Payment Enquiries

Veronica Morris
creditcontrol@spink.com
+44 (0)20 7563 4018

VAT Enquiries

John Winchcombe
jwinchcombe@spink.com
+44 (0)20 7563 4101

The Spink Environment Commitment: Paper from Sustainable Forests and Clean Ink

Spink has a long history of preserving not only collectables but our planet, too. We are proud to ensure that our policy of sustainability and conservation keeps up with Spink's growth, helping improve the environment for new generations of collectors.

We insist that our printers source all paper used in the production of Spink catalogues from FSC and/or PEFC suppliers and use non-hazardous inks. We also ask they hold the environmental standard ISO 14001.

Spink recycle all ecological material used on our premises and we encourage you to recycle your catalogue once you have finished with it.

Front Cover Illustrations: 26, 49, 170, 253 Back Cover Illustration: 312

Inside Front Cover Illustration: 174, 183, 341 Inside Back Cover Illustrations: 199, 237, 273, 306

www.spink.com

@SpinkandSon

#Spink_Auctions

Spink_auctions

Spinkauctions

Spink_auctions



Group Chairman and CEO

Olivier D. Stocker

Directors

Tim Hirsch FRPSL

Chief Financial Officer

Alison Bennet

Head of EMEA

Mira Adusei-Poku
mpoku@spink.com

Global Head of Banknotes and Bonds

Kelvin Cheung
kcheung@spink.com

Specialists

Stamps

Tim Hirsch FRPSL
Iain Murphy
David Parsons
Nick Startup
Neill Granger FRPSL
Dominic Savastano
Josh Barber
Thomas Fell
Ian Shapiro (Consultant)
Guido Craveri (Consultant)
Christopher Green
George Yue (Consultant)
Alan Ho

Bonds & Shares

Mike Veissid (Consultant)

Books

Emma Howard
Nik Von Uexkull
Olivia Rae Marshall

Client & Auction Management

Geoff Anandappa (Consultant)
Dora Szigeti
Nik Von Uexkull
Benedetta Fusco
John Winchcombe
Finnian Spencer
Victor Castel
Samantha Lanevi
Newton Tsang
Katrina Chan

PR & Marketing

Rita Ariete
Alzbeta Lanova

Chief Customer Officer

Rita Ariete

Head of Americas

Charles J Blane
cblane@spink.com

Coins

Henrik Berndt
Richard Bishop
Tim Robson
Gregory Edmund
Lawrence Sinclair (Consultant)
Barbara Mears
Greg Cole
Kin Choi Cheung
Paul Pei Po Chow
Joseph Lam

Historical Documents

Thomas Fell
Neill Granger FRPSL
Ian Shapiro (Consultant)
Greg Cole

Finance

Alison Bennet
Sue Pui
Marco Fiori
Mina Bhagat
Dennis Muriu
Veronica Morris
Nicholas Waring

Chief Operating Officer

Mira Adusei-Poku

Head of Asia-Pacific

Sue Pui
spui@spink.com

Banknotes

Barnaby Faull
Elaine Fung
Arnas Savickas
Harris Webb
Greg Cole
Paul Pei Po Chow

Orders, Decorations & Medals

Marcus Budgen
Iain Goodman
Jack West-Sherring
Greg Cole

Wine & Spirits

George Koutsakis

Special Commissions

Ian Copson
Robert Wilde-Evans

IT & Administration

Michael Lewis
Berdia Qamarauli (Consultant)
Liz Cones
Slawomir Kolsut
Newton Tsang
Jacqueline Wong

Representatives For Australia

Peter Griffiths - pgriffiths@spink.com
Michael R. Downey - mdowney@spink.com

Representative For Canada

Timothy J. Stewart - tstewart@spink.com

Representative For Japan

日本での弊社オークションへの出品・参加に関してのお問い合わせ
Alan Ho - japan@spink.com

Representative For South Africa

Andrew Kennedy - akennedy@spink.com

Spink UK

69 Southampton Row
Bloomsbury
London
WC1B 4ET
Email:
concierge@spink.com
Tel: +44 (0)20 7563 4000
Fax: +44 (0)20 7563 4066

Spink USA

145 W. 57th St.
18th Floor
New York, NY
10019
Email:
usa@spink.com
Tel: +1 646 941 8664
Fax: +1 646 941 8686

Spink China

4/F and 5/F
Hua Fu Commercial
Building
111 Queen's Road West
Sheung Wan
Hong Kong
Email:
china@spink.com
Tel: +852 3952 3000
Fax: +852 3952 3038

Spink Asia

Registered at:
50 Raffles Place
#17-01 Singapore Land
Tower
Singapore 048623
Email:
singapore@spink.com

Spink Switzerland

Via Livio 8
6830 Chiasso
Switzerland
Email:
switzerland@spink.com
Tel: +41 91 911 62 00
Fax: +41 91 922 20 52

SPINK

WHERE HISTORY IS VALUED

THE LUGANO COLLECTION OF VENEZUELA

29 APRIL 2020 | LONDON



For further information please contact

Dominic Savastano | +44(0)20 7563 4094 | dsavastano@spink.com

SPINK LONDON | 69 Southampton Row | WC1B 4ET | United Kingdom



WWW.SPINK.COM #SPINK_AUCTIONS

SPINK

WHERE HISTORY IS VALUED

THE “LIBRA” COLLECTION of the 1961 Surcharges of Basutoland, Bechuanaland and Swaziland

13 MAY 2020 | LONDON



For further information please contact

Nick Startup | +44(0)20 7563 4073 | nstartup@spink.com

SPINK LONDON | 69 Southampton Row | WC1B 4ET | United Kingdom



WWW.SPINK.COM #SPINK_AUCTIONS

FOREWORD

The printing of postage stamps should be an exact science; preparation of the printing plates; watermark paper; printing inks and perforation machines. What could possibly go wrong?

Plenty!

Stamp production from the Australian Colonies was almost totally reliant on the local government printers. In many cases, the lack of attention to detail of the colonial government printers and the accountability for all sheets printed, forced many of the Colonies to issue stamps which would, in the normal course of events, be discarded. As such, there are an abundance of postage stamp errors from the Australian Colonies.

The Gary Diffen collection represents the finest collection ever assembled of these errors. In fact, no auction house has dedicated a single sale catalogue purely for colonial errors, with this being the first of two sales devoted to these fascinating rarities.

Almost from the inception of stamp collecting as a hobby, the thirst for knowledge and new discoveries reached a ready audience through philatelic publications. From the United Kingdom, eminent periodicals such as the London Philatelist, Stanley Gibbons Monthly Journal, and the Philatelic Record detailed new discoveries from around the world. In Australia, the stamp collecting community was well served by The Australian Philatelist, Vindin's Stamp Monthly, and Philately from Australia. All these, and many more, documented the new errors and discoveries to a thirsty audience. Collectors were aware of the postage stamp errors available to them, and chased them with equal fervour to enhance their collections with items that were different to the normal postage stamp, block or cover.

The genesis of this collection started almost twenty years ago when Gary started following the sales of errors in many of the large auction houses and a few purchases were made. Although having a good general knowledge of the Australian Colonies and their rarities, it quickly became apparent that deeper research in to the availability of each item listed in the Stanley Gibbons catalogue was required to determine the rarity of each error.

Months were spent in a number of libraries, especially those which contained runs of auction house catalogues, and in particular with Geoff Kellow. Over the years, a detailed database was formed, representing each error listed by the Stanley Gibbons catalogue (and many that were not), and for the Federal issues, the Brusden White catalogue. This became Gary's "buying" database. Each error, its rarity and the number of examples known was recorded in a central repository.

With the acquisition of each error, it could be correctly attributed to rarity and in most cases, the date it was discovered and published in the philatelic journals of the time. In forming the collection across all the Australian Colonies, it became apparent during the research that no-one had ever attempted this undertaking to the scale represented in this auction catalogue.

Historically, many of the major Australian Colonial stamp errors have been concentrated in a few major collections. From the general collections of the region, many items in this collection featured in the Ferrari, Pack, Burrus and Caspary sales. New South Wales is represented by examples from the Ginger, Slade Slade, Manwood, Alvarado and Hutson collections. Queensland, one of the most difficult colonies to assemble, has rarities from the Snowden, Manning, and Griffiths collections. Finally, the South Australian errors, have been graced in the Hall, Mursell, Napier and Blake holdings. This auction, and Part II to be sold later in the year, are the first to exclusively offer errors of the Australian Colonies.

Many of the errors in this collection are the only examples recorded. Others in blocks, are the largest multiples known. Rarely does the opportunity arise to acquire in quantity important items to significantly enhance ones collection. Should you be considering a new area to collect, many of the major rarities are contained in this catalogue, and would be ideal to commence a more comprehensive study of the specific issue selected. The sale of this holding provides the collector the opportunity to acquire errors from the more modest budget, to international rarities, many of which are unique.

Extensions

Prospective buyers who wish to obtain an expert opinion on any lot (other than a mixed lot or lot containing undescribed stamps) are requested to notify Spink in writing not less than forty-eight hours before the time fixed for the commencement of the first session of the sale. If accepted by Spink, such request shall have the same effect as notice of an intention to question the authenticity of the lot for the purposes of Condition 3.4 of our Terms and Conditions for Buyers.

Notice of a request for an expert opinion must give the reason why such is required and specify the identity of the expert which will be subject to the agreement of Spink. All lots for which Certificates of Authenticity are desired must be submitted by Spink to the Expert Committee for choice.

Buyers are reminded that any lot(s) purchased “on extension” are subject to payment in accordance with our normal Terms & Conditions of Business. Settlement of any lots on extension should be made at the time of invoice payment. Overdue accounts are subject to interest charges.

Extensions requested on account of condition will not be accepted for expert opinions. Any Lot described as having faults or defects may not be returned should a certificate cite other faults or defects not included in the catalogue description.

Should Spink accept a request for an extension under the foregoing provisions of this paragraph, the fact may be stated by the Auctioneer from the rostrum prior to the sale of the lot.

It should be noted that any stamp accompanied by a Certificate of Authenticity is sold on the basis of that Certificate only and not on the basis of any other. No request for an extension will be accepted on such a stamp and the return of such a stamp will not be accepted.

Notes Concerning Descriptions

GUM: Original gum should be expected on unused stamps where appropriate, unless stated otherwise in the description:

mint	unused with original gum showing slight disturbance caused by previous hinge, which may be present in part or entirely removed
part original gum	unused with original gum significantly disturbed or heavily hinged
unmounted mint	original gum as issued
unused	without gum

COVERS: Should be expected to have minor nicks and tears usually from opening. Folded letters or covers normally have one or two file folds. These are not described unless of an exceptional nature and are not grounds for return.

entire letter	complete as sent with comments still attached to the outer address portion
entire	the outer portion of a folded letter but without contents
cover	an envelope

Symbols and Abbreviations

⊗	unmounted mint	d.s.	datestamp
★	unused	h.s.	handstamp
○	used	Ⓐ	air mail
⊞	block of four	Ⓢ	specimen
⊞	block larger than four	Ⓒ	cancelled
⊠	used on cover, entire letter, etc.	Ⓔ	essay
△	on piece	Ⓗ	proof
var.	variety, varieties	F	forgery
cat.	catalogue, catalogue value	R	reprint
c.d.s.	circular datestamp		

References

Catalogue values and numbers are those taken from the latest available edition.

The use of Gibbons Specialised catalogues in Great Britain sales is clearly indicated. Where other catalogues are used they are mentioned by name.

Buyers are reminded that payment must be made within seven days from the date of sale (condition 5.4.1), and interest will be added for overdue accounts (condition 5.10.1.1).

Please note charges for credit card payments (condition 5.4.3(iii)).

Buyers are reminded that if they default on a successful bid that details relating to such default may be shared with other auction houses and live bidding platforms (condition 5.11).

Note: All buyers must read the notes concerning requests for Extensions printed on page 6 of this catalogue.

The Terms of that notice must be complied with fully under all circumstances.

Please note that 'Spink Live' is running on an improved on-line bidding platform, which is accessible through www.spink.com and also as a SpinkLive app available for download from the App Store.

You can continue bidding online free of charge.

WEDNESDAY 29 APRIL 2020

Commencing at 10.00 a.m.

NEW SOUTH WALES

1850-51 SYDNEY VIEWS



1



2



3

- x1 ○ 1d. pale red, Pl. I on hard bluish paper, [9], **double impression**, good margins and lightly cancelled, fine. RPSV Certificate (2009). S.G. 5. Photo £150-200
Note: The doubling on this example is approximately .5mm. to the base
PROVENANCE:
V.P. Manwood, November 1995
- x2 ○ 1d. dull carmine, Pl. II on hard toned yellowish paper, **double impression**, close to good margins, lightly cancelled, very fine. S.G. 8. Photo £150-200
Note: The doubling on this example is approximately .5mm. to the base.
- x3 ○ 3d. yellow-green on greyish wove paper, **double impression**, good to large margins, cancelled by Sydney obliterator, fine. S.G. 39. Photo £150-200
Note: Double impressions on the 3d. Sydney Views are very scarce.

**THIS AUCTION IS CONDUCTED
BEHIND CLOSED DOORS.**
**FOLLOW THE AUCTION AND BID ON SPINKLIVE
AS IF YOU WERE IN THE ROOM.**
TELEPHONE AND COMMISSION BIDDING ARE ALSO WELCOME.

New South Wales, 1850-51 Sydney Views - *contd.*



4

x4 ○

3d. yellow-green on greyish wove paper, **double print, one albino**, small to large margins, cancelled by Sydney obliterator, fine. The only recorded example and the most famous error of the Sydney Views. RPSV Certificate (2008). S.G. 42. Photo

£2,000-2,500

Note: This error was first recorded by Robson Lowe in the "London Philatelist" in August 1957. It was caused by two sheets of paper going through the press at one time and both receiving the impression from the plate, only the top sheet receiving the colour. The blank sheet at bottom was then passed through the press for a second time receiving the impression of the stamp in colour. Robson Lowe commented that "this is the first time I have come across such an error among the primitive classic stamps of the British Empire". A copy of the article accompanies the lot.

PROVENANCE:

V.P. Manwood, November 1995

1851-54 LAUREATED ISSUES



5

x5 ○

1852 2d. Prussian blue, worn plate, blue to greyish medium paper, a pair with close to large margins and a single with small to good margins, both with **double impression**, fine used. RPSV Certificate (2009) for the single. S.G. 57. Photo

£150-200

Note: Double impressions on the 2d. Laureate issues are very scarce.

Watermark double-lined "1"



6

x6 ○

1854 3d. yellow-green, **error watermark "2"**, very close to good margins and unusually lightly cancelled. RPSV Certificate (2008). S.G. 87b, £1600. Photo

£800-1,000

Note: This error was well known to colonial collectors in the late 1870s before publication in "The Philatelic Record" in May 1890. It is one of the most famous errors of New South Wales. Whilst over twenty examples of this error are recorded, nearly all of them exhibit defects and faults. This is one of the finest examples known.

PROVENANCE:

C.L. Pack, December 1944

V.P. Manwood, November 1993

1854-72 DIADEM ISSUES

Imperforate



7



8



9

x7 ★

1854 5d. dull green, **watermark inverted and reversed**, good margins, fine unused. S.G. 88, £1400+. Photo

£400-500

x8 ★

1854 5d. dull green, **watermark reversed**, good margins and colour, fine unused with large part original gum. The only recorded example. R.P.S. Certificate (1985). S.G. 88, £1400+. Photo

£1,000-1,500

Note: This is a very rare error and was not recorded by Hutson in "The Stamps of New South Wales" in 1960.

x9 ○

1854 6d. deep slate, **watermark sideways facing right**, close to large margins, centrally cancelled "23" (Wollongong), fine. The only recorded example. RPSV Certificate (2008). S.G. 89a under catalogued at £1200. Photo

£2,000-2,500

Note: This error was discovered by H. Gordon Kaye and was the subject of an article in the "London Philatelist" in 1980, which led to its listing in the Stanley Gibbons catalogue in 1994.

PROVENANCE:

H. Gordon Kaye, March 1991

New South Wales, 1854-72 Diadem Issues, Imperforate - *contd.*



10



11

- x10 ★ 1854 6d. fawn, **watermark “8” inverted and reversed**, close to good margins, unused without gum; light horizontal crease and thin spot, neither of which affect appearance. The only recorded example in this shade (others are known in the greyish brown shade). R.P.S. Certificate (1952). S.G. 93a, £4500. Photo £1,500-2,000
- x11 ★ 1854 6d. greyish brown, **watermark inverted and reversed**, good margins, very fine unused. S.G. 96, £2000+. Photo £400-500



12



13

- x12 ○ 1854 6d. greyish brown horizontal pair, **watermark “8” inverted and reversed**, good to large margins, fine used. Only three pairs recorded, this being the finest. S.G. 96a. Photo £300-400
- x13 ○ 1854 6d. greyish brown horizontal pair, **watermark “8” sideways facing right**, small to large margins, cancelled by “170” sunburst, fine. Pairs are the largest multiple known, of which two are recorded, this being the finer. S.G. 96ab, £1000. Photo £400-500

PROVENANCE:

Geo. Ginger, December 1945
Hutson, February 2013



14



15

- x14 ○ 1854 6d. greyish brown, **watermark “8” sideways facing right**, good to large margins, fine used. S.G. 96ab, £500. Photo £200-250
- x15 ★ 1854 1/- pale red, **watermark inverted and reversed**, small to good margins, fine unused. S.G. 100, £5000+. Photo £1,000-1,500



16

x16 ○

1856 1d. orange-vermilion, **watermark “2”**, three large margins and neatly cancelled with small part Sydney duplex; small tear at left and a fraction soiled. The only recorded example. R.P.S. Certificate (1941 and 2003). S.G. 107a, £8,500. Photo

£5,000-6,000

Note: This error was discovered by the English dealer Tommy Allen and its discovery was announced in the “Australian Stamp Journal” in December 1935, This stamp is regarded as one of the great watermark errors of the Australian Colonies.

PROVENANCE:

William Frazer, September 2003
 “Alvarado”, May 2010



17

x17 ○

1856 1d. orange-red, **printed on both sides, the second impression inverted**, small margin at foot, touched on other sides, cancelled “151” of Condamine (Moreton Bay District), fine. The only example recorded. B.P.A. Certificate (2003). S.G. 109a, £2500. Photo

£2,500-3,000

Note: This error was recorded by Bassett Hull in 1911 and occurs in two different shades. The only unused example is in the orange-vermilion shade. This stamp, in orange-red, is the only used example in private hands. The Royal Collection has two copies of this error.

PROVENANCE:

Victor Frankenstein, May 2000
 “Alvarado”, May 2010



18

x18 ★

1856 1d. orange-vermilion and 1d. orange-red, both **watermark inverted and reversed**, close to good margins, and unused without gum, the latter with small tone spot on reverse otherwise fine. S.G. 107, 109. Photo

£200-250

New South Wales, 1854-72 Diadem Issues, Imperforate - *contd.*



19

- x19 ○ 1856 2d. blue, Pl. I worn impression with **retouch** [24], **watermark inverted and reversed**, small to good margins, lightly cancelled, fine. S.G. 112a. Photo £200-250



20



21

- x20 ★ 1856 2d. blue, Pl. I, **watermark "5" inverted and reversed**, good margins on three sides, just into at right, unused without gum (a little brown on reverse as a result of the original gum), tiny thin in left margin not affecting fine appearance. Very scarce. S.G. 112c, £950. Photo £200-250
- x21 ★ 1856 2d. blue II horizontal strip of three, **watermark inverted and reversed**, small to large margins, unused with part original gum, fine. The second largest multiple of this stamp recorded. S.G. 114, £2850+. Photo £1,200-1,500

PROVENANCE:
Hutson, February 2013

SPINK LIVE

Spink Live is now running on a new and improved bidding platform
 Accessible online through www.spink.com and also available iOS and Android devices
 Bidding on 'Spink Live' remains free of charge

MY ACCOUNT

- Login
- Consign An Item
- Watched Lots
- My Bids

- Medals
- Stamps
- Watches
- Whiskies & Spirits
- Wines

Click to Login / Register
Tick your Interests
Scroll the Lots
Slide to Bid

Download on the App Store
GET IT ON Google Play

For any enquiries or further assistance please contact:
 Tel: +44 (0)20 7563 4112 | Email: spinklive@spink.com

WHERE HISTORY IS VALUED



22

x22 ○

1856 2d. pale blue, **watermark "1"**, mainly good to large margins (touched at lower left), indistinctly cancelled, fine. Extremely rare, one of two examples recorded, the other is in the Royal Collection. B.P.A. Certificate (1988). S.G. 112b, £8500. Photo

£5,000-6,000

Note: The first report of this error was in the "London Philatelist" in May 1892 by M.P. Castle, the famous London collector. His example was bought by King George V in 1929 and is now in the Royal Collection.

PROVENANCE:

C.L. Pack, December 1944
 Isleham, March 1987
 Victor Frankenstein, May 2000
 "Alvarado", May 2010



23

x23 ○

1856 3d. dull green, **watermark "2"**, margins close to good on three sides, touched at right, lightly cancelled by part duplex, natural paper crease at right, fine. R.P.S. Certificate (1957). S.G. 117a, £4,000. Photo

£2,000-2,500

Note: Ten used examples of this error are recorded with most having defects. This is one of the finest examples known.

PROVENANCE:

John S. White, May 1997

New South Wales, 1854-72 Diadem Issues - *contd.*

Perforated



24

x24 ★

1860 perf. 12 1d., 2d. Pl. I and II (worn), 5d. and 6d., all with **watermark inverted and reversed**, all unused, the 5d., which is rare, without gum, the others with part or large part original gum. Cat. £2250. Photo

£250-300



25

x25 ○

1860 perf. 12 1d. orange-red, **double impression**, lightly cancelled; thin spot and some shortish perfs at right, nevertheless still of fine appearance. The only recorded example. R.P.S. Certificate (1969). S.G. 131. Photo

£1,000-1,500

Note: This error was first discovered when auctioned by Robson Lowe in 1969 and it was listed in Stanley Gibbons in 1973 but has only recently been inextricably removed.



26

x26 ○

1863 perf. 12 2d. Prussian blue, **watermark "1"**, lightly cancelled "18" (Mudgee); thin at foot not affecting fine appearance. One of the great watermark errors of the Australian Colonies, being the only example in private hands, and under-catalogued at £3500. R.P.S. (1923) and RPSV (2013) Certificates. S.G. 136a. Photo

£4,000-5,000

Note: This error was discovered by Sydney stamp dealer T.H. Nicolle and reported by Bassett Hull in the "Australia Philatelist" in May 1904. Five other examples are known, all in institution collections. One is in the Royal Collection, with two in the Vickery Collection in the Powerhouse Museum in New South Wales. An example is in the Armstrong Collection in the Mitchell Library in New South Wales, and the H.L. White example in the New South Wales State Library is now believed lost.

PROVENANCE:

Ernest Collins, October 1928
 H.P. Manus, June 1933
 Geo Ginger, December 1945
 Hutson, February 2013



27



29



28

- x27 ★ 1860 perf. 12 1/- brownish red, **watermark inverted and reversed**, fine unused with large part original gum. Rare. S.G. 152, £1700. Photo £400-500
- x28 ★ 1860 perf. 12 1/- rose-carmine, **watermark inverted and reversed**, fine unused with large part original gum. Rare. S.G. 153, £1700. Photo £400-500
- x29 ★田 1863 perf 13 3d. blue-green block of four, **watermark inverted and reversed**, fine mint. Beieved to be the largest mint multiple of this error. S.G. 156, £440+. Photo £250-300

PROVENANCE:
Hutson, February 2013



30

- x30 ★ 1863 perf 13 3d. blue-green with convolvulus printing in margin on reverse at left, **watermark inverted and reversed**, the perfs at top of stamp cut off, otherwise fine mint. Rare. S.G. 156. Photo £400-500

Note: The convolvulus printing should be on the front of the margin, instead of on the reverse, confirming the error. It is the only recorded example of this marginal printing on the reverse throughout the whole Diadem series.



31



32

- x31 ○ 1863 perf 13 3d. yellow-green, **watermark inverted and reversed**, **perforations double at left** and **imperforate between stamp and margin at right**, neatly cancelled by large part Sydney duplex, fine. S.G. 157. Photo £200-250

Note: This is the only recorded example of the 3d. value of imperforate between stamp and margin at right.

- x32 ○ 1863 perf 13 3d. dull green, **no watermark**, fine used. The only example recorded. S.G. 158. Photo £150-200

New South Wales, 1854-72 Diadem Issues, Perforated - *contd.*



33



35



34

- x33 ○ 1863 perf 13 6d. mauve, **imperforate between stamp and margin at right**, lightly cancelled; paper wrinkle at top left otherwise fine. The only example recorded. S.G. 165. Photo £150-200
- Note: The first perforation 12 machine resulted in all stamps at the edge being imperforate between stamp and margin. These are not errors and are considered part of the printing process.*
- x34 ○ 1863 perf 13 6d. purple, **imperforate between stamp and margin at foot**, clearly cancelled, vertical crease otherwise fine. The only example recorded. S.G. 165. Photo £150-200
- x35 ◻ 1863 perf 13 6d. purple block of four, **watermark "5" inverted and reversed**, a little heavily cancelled, fine. Rare, the only recorded block of this error. S.G. 165a. Photo £200-250
- PROVENANCE:
"Alvarado", May 2010



36

- x36 ○ 1863 perf 13 6d. purple, **watermark "5" sideways facing left**, the finest used example known and under-catalogued at £1200. Ceremuga Certificate (2003). S.G. 165ab. Photo £1,000-1,500
- Note: This error was first recorded in the "Philatelic Journal of Great Britain" in April 1927. Six used examples are recorded, all being poorly centred or with defects, except this stamp.*
- PROVENANCE:
"Alvarado", May 2010



37

- x37 ★ 1863 perf 13 6d. purple vertical pair, **watermark “12” inverted and reversed**, vertical bend otherwise fine mint. The only multiple of this error recorded. S.G. 165b, £1500. Photo

£300-400



38

- x38 ○ 1863 perf 13 8d. yellow-orange, **watermark sideways facing right**, neatly cancelled, fine. The only recorded example and under-catalogued at £1200. Ceremuga Certificate (2003). S.G. 167ba. Photo

£1,000-1,500

PROVENANCE:
“Alvarado”, May 2010

- x39 A selection of Diadem errors comprising perf 12 used 5d. with **watermark reversed** (rare); perf 13 unused 1d., 6d. (2), 8d. and 1/-, and used 1/- block of four with **watermark inverted and reversed**; 1/- (defective) with large part **offset**; and 6d. (2) and 1/- (3, two on piece with 6d. and normal 1/-); condition generally fine. A scarce assembly. Cat. £1500+

£200-250

**THE “DUBOIS” COLLECTION OF JAMAICA
POSTAL HISTORY AND STAMPS**

TO BE OFFERED IN 2020-21 IN TWO PARTS
Considered to be the greatest collection of Jamaica ever assembled

New South Wales - *contd.*

1856-63 REGISTERED SIXPENCE

Imperforate



40

x40 ○

1856 6d. vermilion and Prussian blue on soft yellowish paper, **frame printed on reverse, the second printing inverted**, lightly cancelled; thin spot at top otherwise fine. One of the great rarities of New South Wales. B.P.A. Certificate (2002). S.G. 102a. Photo

£5,000-6,000

Note: This error was first recorded in "The London Philatelist" in July 1895. One unused and two used examples are recorded in private hands. The other used example is badly damaged and there is another example in the Royal Collection.

PROVENANCE:

Hutson (private sale)

V.P. Manwood, November 1995



41



42

x41 ○

1856 6d. orange and Prussian blue with watermark manufacturers letters, **double impression of frame**, close to good margins on three sides, just into at top, lightly cancelled, slight thin at upper left not affecting wonderful appearance. The only recorded example. RPSV Certificate (2010). S.G. 106. Photo

£750-1,000

Note: The perforated double impression of frames of the Registered 6d. (SG 127a) used to be listed by Stanley Gibbons as separate listings up to a few years ago. For some reason, they have been removed.

Perforated

x42 ○

1860 6d. rose-red and Prussian blue, perf. 13, **imperforate between stamp and margin at right**, lightly cancelled "120" (Moree), a little soiled though rare and the only example recorded. S.G. 121. Photo

£200-250



43



44



45



46

- x43 ★ 1860 6d. rose-red and Prussian blue, perf 13, **double impression of frame**, a very fine mint example with sheet margin at top and the only recorded unused example. RPSV Certificate (2009). S.G. 125. Photo £1,000-1,200
- Note: This error was known to collectors in the late 19th century and was published by Bassett Hull in 1911, but only in the pale blue shade. This mint example, and the used example in the following lot, are the only examples recorded in the Prussian blue shade.*
- PROVENANCE:
W.H. Silk, April 1944
- x44 ○ 1863 6d. rose-red and Prussian blue, perf 13, **double impression of frame**, clearly cancelled “90” (Grafton), very fine and the only recorded used example in this shade. S.G. 125. Photo £400-500
- x45 ★ 1863 6d. rose-red and pale blue with margin at top, perf 13, **watermark inverted**, fine unused with part original gum. S.G. 127. Photo £100-150
- x46 ○ 1863 6d. rose-red and pale blue, perf. 13, **double impression of frame**, clearly cancelled “60” (Patterson), very fine. S.G. 127. Photo £400-500
- Note: This error was listed by Stanley Gibbons in 1976 but has only recently been inextricably removed.*
- PROVENANCE:
“Carrington”, November 2012

1861-99 FIVE SHILLINGS COIN

1861-88 Issues



47

- x47 ○ 1875 perf 13 5/- deep rose-lilac, **imperforate between stamp and margin at foot**, cancelled by Sydney duplex, the only recorded example of which this is the finer: and 1883 5/- dull purple, **imperforate between stamp and margin at foot**, clearly cancelled; despite the perfs being cut off on the other three sides, this is the only recorded example of this error. S.G. 176. Photo £150-200

New South Wales, 1861-99 Five Shillings Coin, 1861-88 Issues - *contd.*



48

x48 ○

1888 (June) perf 10 5/- reddish purple vertical pair showing **additional perf 12 row between**, cancelled by Sydney duplex dated 3 October 1888, fine. RPSV Certificate (2013). S.G. 180b, unpriced. Photo

£400-500

Note: The stamps in this pair are perforated 10 all round with an additional horizontal line of perforations gauging 12 between producing the mixed perforations error. Although this pair resided in the Hutson collection, he did not record it in the "Stamps of New South Wales" published in 1960. The discovery of this pair led to its listing in the Stanley Gibbons catalogue in 2016.

PROVENANCE:

Hutson, February 2013

1897-99 Reissues



49

x49 ★

5/- reddish purple marginal horizontal pair [9-10], **imperforate between and between stamp and margin at right**, fine unused with large part original gum. Extremely rare and one of the great errors of New South Wales. S.G. 297ca, £9500. Photo

£4,000-5,000

Note: There are eight pairs of this error recorded, including one with the perforations cut off and one in the Royal Collection, plus two blocks of four. Three pairs show the imperforate between stamp and right margin error, of this example is the finest.

PROVENANCE:

W.H. Silk, April 1944

Geo. B. Boucher, April 1972

"Alvarado", May 2010



50



51

x50 ★ ㊦

1864 watermark single-lined “1”, Diadem 1d. pale red block of nine with **watermark inverted**, unused with large part usual brown gum, some re-inforced perfs, fine. Believed to be the largest known multiple of this error. S.G. 195, £1170+. Photo

£350-450

PROVENANCE:

Hutson, February 2013

x51 ★

1864 watermark single-lined “1”, Diadem 1d. pale red marginal strip of three, **watermark inverted** and **imperforate between stamp and margin at right**, unused with mainly large part original gum, fine. S.G. 195, £390+. Photo

£150-200



52

x52 ○

1871-1902 1/- black, an **imperforate vertical pair**, lightly cancelled by part duplex, outer frameline touched at upper right, fine. Rare. RPSV Certificate (2002). S.G. 221e, £2750. Photo

£2,000-2,500

Note: The auction of the Steinway collection in 1939 of a faulty imperforate pair provided the first evidence of the existence of this error. In 2002, two additional examples were uncovered with the auction of the Colonel Evans collection which led to its listing in the Stanley Gibbons catalogue in 2003. Only three examples are recorded.

PROVENANCE:

Colonel Harrie Evans, May 2002

New South Wales - *contd.*



53

x53 ★田

1882-97 perf 11 3d. bluish green, a block of four **imperforate between vertically**; some paper adhering to lower pair otherwise fine mint. Rare. S.G. 227ba, unpriced. Photo

£2,500-3,000

Note: This error was first reported in "Philately from Australia" in December 2012 although collectors were aware of it in the early 1920s with a block of eight in the Vickery Collection in the New South Wales Powerhouse Museum. The error was catalogued by Stanley Gibbons in the 2015 edition. Two blocks of four are recorded in private hands.



54



55

x54 ○

1882-97 perf 12x10 6d. mauve **imperforate between stamp and margin at right**, cancelled by part Sydney duplex, fine. Three postally used examples recorded. S.G. 235ca. Photo

£150-200

x55 ○

1882-97 perf 12x10 6d. mauve, a horizontal pair **imperforate between**, both with sunburst cancellation, fine. S.G. 235cb, £2750. Photo

£1,500-2,000

Note: The discovery of this error was announced in the "Australian Stamp Journal" in July 1911 when a bank correspondence was sold to Sydney stamp dealer, Fred Hagen, yielding a block of four in the Steinway collection (which is believed to have been split since the sale in 1939) and a block of six in the H.L. White collection in the State Library of New South Wales. Six pairs are available to collectors of which one is damaged.

PROVENANCE:
William Frazer, September 2003



56



57

x56 ★

1885-86 overprinted “POSTAGE” in black, perf 12 10/- lilac and claret, **double impression of overprint**, unused with part original gum; wing margin at top (the marginal edges of this printing were not perforated). RPSV Certificate (2011). S.G. 239ab, unpriced. Photo

£750-1,000

Note: Discovered in 2011, this stamp led to the error being listed in the Stanley Gibbons catalogue the following year. Currently, two unused and one used example have been recorded.

x57 ○

1885-86 overprinted “POSTAGE” in black, perf 12 10/- lilac and claret, **double impression of overprint**, fine used. The only used example recorded. S.G. 239ab, unpriced. Photo

£200-250

1888-89 CENTENNIAL ISSUE



58

x58 ★

Id. lilac top left corner pair, **imperforate**, hinge remnant otherwise fine mint. Rare and under catalogued. RPSV Certificate (2013). S.G. 253c, £2250. Photo

£2,000-2,500

Note: There are no reports of this error until the publication of “Stamps of New South Wales” by Hutson in 1960. The only recorded examples are this pair and the Hutson block of four. Another block resides in the Royal Collection.

PROVENANCE:
Carrington, November 2012

New South Wales, 1888-89 Centennial Issue - *contd.*



59

- x59 ★ 1d. lilac on Stamp Duty paper, an upper left corner pair, the left stamp **without watermark**, some perfs at top re-inforced, fine mint. S.G. 259. Photo £150-200

Note: In late 1888, there was a shortage of Watermark Large Crown/NSW paper and the Government Printer was forced to produce emergency printings of the 1d. and 2d. values on Stamp Duty paper watermarked "NSW". Since the paper was of a different size than that usually encountered, some sheets missed the perforating machine, producing stamps imperforate between stamp and margin. This was part of the printing process and is not considered an error. However, on rare occasions, the paper was mis-placed resulting in stamps in the corner position being printed without watermark.



60



61



62

- x60 ★田 2d. Prussian blue **imperforate** block of four with margin at left showing part inscription, the upper right stamp with thin otherwise fine mint. S.G. 254a, £750. Photo £750-1,000

Note: This is the largest recorded multiple and the only known block of four in private hands. There is another block in the H.L. White collection in the State Library of New South Wales.

PROVENANCE:
Hutson, February 2014

- x61 ★ 2d. Prussian blue **imperforate** lower left corner pair with "CP" monogram, the left stamp with thin otherwise fine mint. S.G. 254a, £375. Photo £150-200

Note: Monogram examples of the imperforate pairs are very scarce.

- x62 ★田 2d. Prussian blue block of four, the right vertical pair **imperforate on three sides**, some hinge remainders, fine mint. The only recorded examples of this error. S.G. 254b, £3400. Photo £2,500-3,000

Note: This error was first reported in "Philately from Australia" in 1953 and listed in the Stanley Gibbons catalogue the following year. Although originally listed as "imperforate between pair" the listing has been recently corrected to "imperforate three sides".

PROVENANCE:
Hutson, February 2013



63

- x63 ○ 4d. red-brown, **double impression** (most noticeable in the value tablet), fine used and the only example recorded. RPSV Certificate (2013). S.G. 255d. Photo £150-200



64

- x64 ★ 1/- violet-brown **imperforate** horizontal pair, fresh and fine mint. Rare, the finer of the two pairs recorded and much under catalogued. R.P.S. Certificate (1978). S.G. 258ca, £1400. Photo £800-1,000

Note: This error is often mis-classified with the imperforate error in purple-brown from the 1899 printing. Only two pairs and a marginal single are recorded.

- x65 A selection comprising 2d. mint vertical pair with **double perfs**, 6d. mint pair with complete **offset** and 5/- used **imperforate between stamp and margin at right**. A scarce trio £100-150



66



67

- x66 ○ 1891 (Jan.) "Halfpenny" on 1d. grey, **surcharge double**, fine used. Rare, four used examples recorded including one in the Royal Collection. RPSV Certificate (2013). S.G. 266b, unpriced. Photo £350-450

- x67 ○ 1891 (Jan.) "Halfpenny" on 1d. grey, **surcharge double**, fine used. Rare, four used examples recorded including one in the Royal Collection. S.G. 266b, unpriced. Photo £350-450

PROVENANCE:
Hutson, February 2013

New South Wales - *contd.*



68

x68 ○

1891 (Jan.) "TWELVE-PENCE/HALFPENNY" on 1/- red, perf 11, **imperforate between stamp and margin at foot**, lightly cancelled by "PARCEL POST/SYDNEY" c.d.s., fine. The only example recorded. S.G. 268b. Photo

£150-200



69

x69 ★

1892-99 ½d. grey **imperforate** horizontal pair, fine mint. The only example recorded. RPSV Certificate (2013). S.G. 271c, unpriced. Photo

£1,000-1,500

Note: This error was discovered in 2013 which led to its listing in the 2015 Stanley Gibbons catalogue.



70

x70 ⊕田

1892-99 ½d. slate block of four with margin at left, perf 12x11½, **imperforate three sides**, fine unmounted mint. S.G. 272c, £3800. Photo

£1,500-2,000

Note: Four blocks are recorded of which two are defective. There is another block in the Royal Collection.

PROVENANCE:
Hutson, February 2013



71



72



73

- x71 ★田 1897 (June) Charity 1d. (1s.) green and brown block of four, **double impression of the vignette**, fine mint. The only examples recorded. R.P.S. Certificate (2019). S.G. 280. Photo £200-250
- Note: The brown printing of the vignette is printed double. The first printing measuring 1mm. to right and 2mm. to foot was unsatisfactory and the stronger second printing was performed which horizontally dissects the inscription "HOME" at the top*
- x72 ★ 1897-99 1d. scarlet, Die I, vertical pair with margin at left, **imperforate three sides**, fine mint. S.G. 289ba, £850. Photo £200-250
- Note: Although Stanley Gibbons list this error as "imperforate horizontally" (vertical pair), the actual error is "imperforate three sides". This Die I error is much rarer than the Die II counterpart of SG 300a. There are seven mint pairs recorded, of which half are faulty. This pair is one of the finest.*
- x73 ★ 1897-99 1d. rose-carmine Die II, an **imperforate** vertical pair with margin at foot, light diagonal crease otherwise fine. Rare and the only example recorded. RPSV Certificate (2011). S.G. 290c, £750. Photo £200-250
- Note: This error was only recently discovered in 2011, leading to its listing in the 2015 Stanley Gibbons catalogue.*



74

- x74 ★ 1897-99 1d. rose-carmine Die II vertical pair **imperforate between**, fine mint. The only example recorded and under-catalogued. S.G. 290d, £1200. Photo £1,000-1,200

New South Wales - *contd.*

1899 (OCT.) WATERMARK CROWN OVER "NSW" (II) ISSUE



75

x75 ★

½d. blue-green horizontal pair, showing **mixed perforations between**, some minor soiling otherwise fine mint. Unlisted by Stanley Gibbons and the only example recorded. Rare. S.G. 298. Photo

£200-250

Note: The pair is perforated 12x11½ with an additional vertical perforation gauging 11 between producing the mixed perforation error.



76

x76 ⊕

½d. blue-green, an **imperforate** horizontal strip of six from left pane with margins at ends, fine unmounted mint. This is the second largest multiple in private hands. S.G. 298a, £750+. Photo

£200-250



77

x77 ★田

1d. carmine block of four, the right vertical pair **imperforate three sides**, lightly toning and tone spots on reverse otherwise fine mint and rare. RPSV Certificate (2013). S.G. 299a, £1000. Photo

£400-500

Note: Although the error was recorded in the scarlet shade, no distinction was made with the earlier carmine printing. It is much rarer than the scarlet printing with only six blocks of four recorded. The certification of this block led to its listing in the Stanley Gibbons catalogue.



78



79

x78 ★田

1d. scarlet top left corner block of four with monogram, **imperforate between stamps and margin at left**, fine mint. Four examples of this error are recorded, including two blocks of four, of which this is the finer. S.G. 300. Photo

£200-250

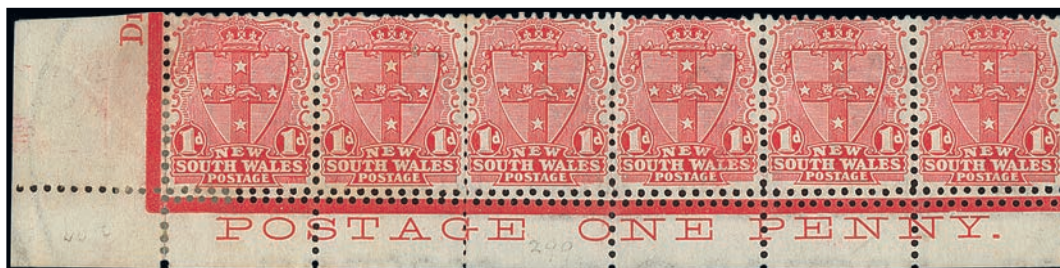
PROVENANCE:

Hutson, February 2013

x79 ★田

1d. scarlet block of four, the right vertical pair **imperforate three sides**, fine mint. RPSV Certificate (2008). S.G. 300a, £1200. Photo

£350-450



80

x80 ★

1d. scarlet lower left corner strip of six showing **mixed perforations at foot**, crease and some minor toning otherwise fine mint. The only example in private hands. RPSV Certificate (2013). S.G. 300c, unpriced. Photo

£500-750

Note: The stamps in this strip are perforated 12x11½ with an additional horizontal line of perforations gauging 11 at foot producing the mixed perforations error. There is a further pair in the H.L. White collection in the New South Wales State Library.

PROVENANCE:

Hutson, February 2013



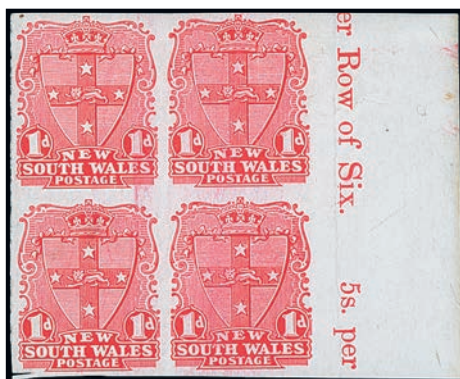
81

x81 ★

1d. salmon-red horizontal pair **imperforate between stamp and margin at left**, fine mint. Rare, four examples of this error recorded in this shade. S.G. 301. Photo

£150-200

New South Wales, 1899 (Oct.) Watermark Crown over "NSW" (II) Issue - *contd.*



82

- x82 ★田 1d. salmon-red, an **imperforate** block of four with margin at right showing part inscription, fine mint. S.G. 301a, £550+. Photo £200-250
- PROVENANCE:
Colonel Harrie Evans, May 2002



83



84

- x83 △ 1d. salmon-red, an **imperforate** pair on piece with normal 1d., clearly cancelled by Sydney duplex (4.3.1902), fine. Rare, only three used pairs recorded. S.G. 301a, £350. Photo £200-250
- PROVENANCE:
John Bell, May 2013
- x84 △ 1d. salmon-red **imperforate** horizontal pair on piece with 1/2d. (damaged), clearly cancelled by Barred Numeral "563" (Turrumurra), fine. Rare, three used pairs recorded. S.G. 301a, £350. Photo £200-250
- PROVENANCE:
Hutson, February 2013



85

- x85 ★ 1d. salmon-red horizontal pair with **mixed perfs**, slight gum toning and the right stamp with vertical crease otherwise fine mint. Rare, the only recorded example in private hands. RPSV Certificate (2014). S.G. 301b, unpriced. Photo £350-500

Note: The stamps in this pair are perforated 12x11½ with an additional vertical line of perforations gauging 11 between producing the mixed perforation error. This pair was discovered in 2013 and led to its listing in the 2014 Stanley Gibbons catalogue. There is another pair in the H.L. White collection in the State Library of New South Wales.



86

x86 ★

2d. cobalt-blue, an interpanneau strip of four, the left pair **imperforate**, fine mint; also an **imperforate** horizontal pair. Only two interpanneau strips recorded. S.G. 302a, £600+.

Photo

£600-800

PROVENANCE:

Hutson, February 2013



87

x87 ★田

2½d. Prussian blue **imperforate** block of four with margin at right showing “G.P.O./N.S.W.”, fine mint, the only block in private hands. S.G. 303a, £750. Photo

£600-800

Note: Only two blocks of four have been recorded, this and the one in the Vickery collection in the Powerhouse Museum. The Royal Collection has a mint block of thirty-six.

PROVENANCE:

Colonel Harrie Evans, May 2002

x88 ★田

4d. red-brown, an **imperforate** lower right corner block of four with “1888” monogram, a little gum toned otherwise fine mint. S.G. 303c, £1200. Photo

£600-800

Note: Blocks of four are the largest multiple known with eight recorded.

PROVENANCE:

Theodore Steinway, October 1939

Colonel Harrie Evans, May 2002



88

New South Wales, 1899 (Oct.) Watermark Crown over "NSW" (II) Issue - *contd.*



89



90

x89 ★田 6d. deep orange, an **imperforate** block of four with "G.P.O./N.S.W." in margin at foot, fine mint, the lower pair unmounted. S.G. 305a, £1200+. Photo £600-800

Note: Blocks of four are the largest multiple known, with four recorded in private hands.

PROVENANCE:
Hutson, February 2013

x90 ★田 6d. emerald-green, an **imperforate** lower left corner block of four, fine mint, the lower pair unmounted. S.G. 306a, £1200+. Photo £600-800

Note: Blocks of four are the largest multiple recorded, with six in private hands.

PROVENANCE:
Colonel Harrie Evans, May 2002



91



92

x91 ★ 9d. on 10d. dull brown, **surcharge double**, fine mint. S.G. 309a, £275. Photo £100-120

x92 △ 9d. on 10d. dull brown, **surcharge double**, fine used on small piece. The only used example recorded. S.G. 309a, £600. Photo £300-400

PROVENANCE:
Hutson, February 2013



93

x93 ★田

9d. on 10d. red-brown block of four, **surcharge omitted** (albino), fine mounted mint. S.G. 309b, £1100+. Photo

£600-800

Note: Blocks of four are the largest multiple known and two are recorded.

PROVENANCE:

Hamilton, October 1980

Hutson, February 2013



94

x94 △

9d. on 10d. red-brown, **surcharge omitted** (albino) on large piece additionally bearing 1d. and 2d., fine. The only used example recorded. S.G. 309b, unpriced. Photo

£300-400

x95 ★田

1/- purple-brown, an **imperforate** block of four with "1888" monogram in margin at foot, fine mint. S.G. 312a, £1400+. Photo

£800-1,000

Note: Blocks of four are the largest multiples known and four are recorded.

PROVENANCE:

Johnson, May 2008



95

x96 ★

An 1897-1902 mint range of multiples containing **double perforations** comprising 2d. (S.G. 292) block of four with rare triple perfs; 1d. (S.G. 299) block of six; 1d. (S.G. 300) block of six; 2d. (S.G. 302) pair; ½d. (S.G. 313) block of four; and 1d. (S.G. 314) block of four; fine and scarce

£200-250

New South Wales - *contd.*

1902-03 WATERMARK CROWN OVER “NSW” (III) ISSUE



97

x97 ★田 ½d. blue-green, a block of four with **mixed perfs**, some gum blemishes otherwise fine. Rare, this block and a faulty pair are the only examples recorded in private hands. BW N3, unpriced; S.G. 313b, £1300+. Photo £300-400

Note: The stamps in this block are perforated 12x11½ with an additional vertical line of perforations gauging 11 producing the mixed perforation error.

PROVENANCE:
Hutson, February 2013

x98 ★ 1d. carmine, a vertical strip of ten comprising the complete column with sheet margin inscriptions, **imperforate between stamps and margin at left**, fine mint. BW N9b, \$5000. S.G. 314. Photo £600-800

Note: This complete column and an unused strip of three are the only examples recorded in private hands. Two panes are known in museum collections.

PROVENANCE:
Hutson, February 2013

x99 ★田 1d. carmine, a block of thirty (3x10) from the right of the sheet with margins on three sides, **imperforate between stamps and margin at right**, fine mint. The only examples recorded. Unlisted in Brusden White; S.G. 314. Photo £600-800



100

x100 ○ 1d. carmine horizontal pair with **mixed perfs**, fine used. The only example in private hands. The H.L. White collection in the New South Wales State Library has a mint vertical pair. BW N11, unpriced; S.G. 314. Photo £300-400

Note: The stamps in this pair are perforated 12x11½ with an additional vertical line of perforations gauging 11 producing the mixed perforations error.



DIAMOND JUBILEE POSTAGE STAMP.—PRICE: 1d. per Label. 6d. per Row of Six. 5s. per Sheet of Sixty.



DIAMOND JUBILEE POSTAGE STAMP PRICE: 1d. per Label. 6d. per Row of Six. 5s. per Sheet of Sixty.

New South Wales, 1902-03 Watermark Crown over "NSW" (III) Issue - *contd.*



101



102



Ex 103

x101 ★

2d. cobalt-blue vertical pair from top left corner with interpane margin at left, **imperforate on three sides**, fine mint. One of two recorded examples in private hands, although the other has not been seen since. This is the only pair recorded in private hands. BW N15ba, \$3000; S.G. 315. Photo

£1,500-2,000

Note: The existence of this error was well known to collectors in the early years of the 20th Century. A mint vertical strip of ten, comprising five pairs, from the second pane of the sheet was discovered and subsequently divided up. One pair was sold to King George V and is now in the Royal Collection, whilst a strip of four was sold to H.L. White. Of the remaining two pairs, one was auctioned in the Steinway collection in 1939 and has not been seen since. This was listed in the Stanley Gibbons catalogue in 2004 incorrectly as S.G. 302b.

PROVENANCE:
Colonel Harrie Evans, May 2002

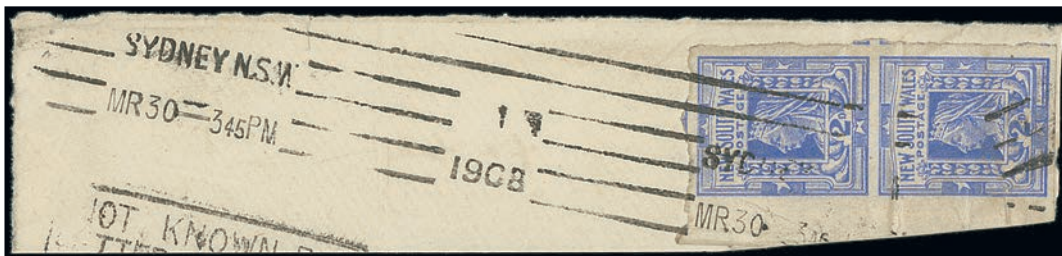
x102 ★

2d. cobalt-blue vertical pair, **imperforate between stamps and margin at right**, the upper stamp with some very minor adhesions on reverse, otherwise fresh and fine mint. The only examples in private hands. Unlisted in Brusden White; S.G. 315. Photo

£300-400

Note: There is a vertical strip of ten in the H.L. White collection in the New South Wales State Library.

PROVENANCE:
Carrington, November 2012



Ex 103

x103

2d. cobalt-blue, an **imperforate** lower left corner block of four with monogram, some light creases and tone spots on reverse, otherwise fine mint, and an **imperforate** vertical pair (lower stamp creased) on piece tied by Sydney machine datestamp, one of two used pairs recorded. R.P.S. Certificate (1961) for block. S.G. 315a, £800+. Photo

£250-300

PROVENANCE:
Hutson, February 2013 (pair)



104



105

x104 ★田

2d. cobalt-blue marginal block of four with **mixed perfs**, fine mint. The only examples recorded. RPSV Certificate (2014). Unlisted in Brusden White; S.G. 315c, unpriced. Photo

£750-1,000

Note: The stamps in this block are perforated 12x11½ with an additional vertical line of perforations gauging 11 producing the mixed perforations error. This error is a new discovery which led to its listing in the 2017 Stanley Gibbons catalogue.

PROVENANCE:

Hutson, February 2013

x105 ★

6d. orange-buff vertical pair, **imperforate between stamps and margin at right**; gum toned and small closed tear in margin at top. One of two pairs recorded. Unlisted in Brusden White; S.G. 320. Photo

£250-300

PROVENANCE:

Johnson, May 2008

1903-08 DIADEMS, WATERMARK CROWN OVER "NSW" (III)



106

x106 ★田

3d. yellow-green, perf 12, a block of four **imperforate between stamps and margin at left**, fine mint. One of three recorded pieces. Unlisted in Brusden White; S.G. 327a. Photo

£400-500

New South Wales, 1903-08 Diadems, Watermark Crown over "NSW" (III) - *contd.*



107



108

x107 ★ 3d. yellow-green, perf 12, a horizontal pair imperforate between stamp and margin at left, fine mint. One of three recorded pieces. Unlisted in Brusden White; S.G. 327a. Photo £200-300

x108 ★ 3d. yellow-green, perf 12, a horizontal pair imperforate between stamp and margin at left, a couple of minor ink marks on reverse at top, otherwise fine mint. One of three recorded pieces. Unlisted in Brusden White; S.G. 327a. Photo £200-300



109



110

x109 ★ 3d. yellow-green, perf 12 block of six (3x2), imperforate between columns 1 and 2, unused with part original gum, some re-inforced perfs, fine. Another block of six (in the next lot) and a pair are recorded. A major piece from the Federal Period of New South Wales. B.P.A. Certificate (1999) for a block of twelve from which this block originates. S.G. 327ba, £7,000+. Photo £2,000-2,500

x110 ★ 3d. yellow-green, perf 12 block of six (3x2), imperforate between columns 1 and 2, unused with part original gum, some re-inforced perfs, fine. Another block of six and a pair are recorded. A major piece from the Federal Period of New South Wales. S.G. 327ba, £7,000+. Photo £2,000-2,500



111



112

- x111 ★ 3d. yellow-green, perf 12x11, **imperforate between stamp and margin at left**, very fine mint. The only example recorded. Unlisted in Brusden White. S.G. 327c. Photo £200-300
- x112 ○ 3d. dull green, perf 12x11, **imperforate between stamp and margin at right**, natural paper crease, fine used. The only example recorded. Unlisted in Brusden White. S.G. 328a. Photo £200-300
- PROVENANCE:
Hutson, February 2013
- x113 ★ 田 5d. dark blue-green, perf 12x11, a block of ten (5x2) with margin at right, the lower right stamp showing **no watermark**, fine mint. Unlisted in Brusden White; S.G. 329 £100-150



114

- x114 ○ 5d. dark blue-green, perf 11x12, **double impression**, two fine used examples (one on small piece) with one additionally showing **watermark sideways facing left**. Both unrecorded in Brusden White. S.G. 329, 329a. Photo £150-200
- x115 ★ 田 5d. dark blue-green, perf 11x12, two mint blocks of four with **watermark sideways facing left and facing right**, the upper pair in the former with two small thin spots, otherwise fine. Very scarce in blocks. S.G. 329a, £280+ £100-150

New South Wales, 1903-08 Diadems, Watermark Crown over "NSW" (III) - *contd.*



116



117

- x116 ★田 5d. dark blue-green, perf 12, a block of four with **watermark sideways facing right**, fine mint. A rare multiple. S.G. 329ca, £480+. Photo £200-250
- x117 ★ 5d. dark blue-green **imperforate** horizontal pair, fine mint. S.G. 329d, £450. Photo £150-200
Note: This imperforate error is much rarer than its S.G. 233e counterpart.
- x118 A range of errors comprising 3d. blocks of four (3) and singles (6, three used) and 5d. blocks of four (4), pairs (3, two used, one vertical) and singles (3, two used) with watermark errors including inverted, reversed and inverted and reversed, perforations double and offsets with many being scarce to rare. A fine opportunity for the specialist £200-260

1905-10 WATERMARK CROWN OVER A



119

- x119 ★田 ½d. blue-green, perf 11½x11, a block of four with **watermark inverted**, the upper pair with hinge remnants, the lower pair unmounted, fine. The only examples recorded. Unlisted in Brusden White. S.G. 333a. Photo £150-200



120



121

- x120 ★ 1d. rose-carmine, perf 12x11½, **double impression**, fine mint. Brusden White N12c; S.G. 334a, £550. Photo £200-250
- x121 ★ 1d. rose-carmine, perf 12x11½, **double print**, unused with part original gum, some very minor tones and small black mark on reverse, none of which affects fine appearance. Rare with only a couple of examples recorded. Note the difference of the doubling between this example and the previous lot. RPSV Certificate (2013). Unlisted by Brusden White and Stanley Gibbons. Photo £400-500



122



123



124



125

- x122 ★田 2d. deep ultramarine, perf 12x11½, a block of four with monogram in margin at top, showing **misperforation due to paper fold** resulting in a partially imperforate between pair at top, unused without gum. The only example recorded. S.G. 335. Photo £200-250
- x123 ★ 2d. deep ultramarine, perf 12x11½, **imperforate between stamp and margin at foot**, vertical crease at left otherwise fine mint. The only example recorded. Not listed in Brusden White. S.G. 335. Photo £150-200
- x124 ○ 2½d. dark blue, **watermark inverted**, centred to lower left, fine used. The only example recorded. Unlisted in Brusden White. Photo £100-200
- x125 ★田 10d. violet block of four, perf 12x11½, **watermark inverted**, fine mint. The only examples recorded. Unlisted in Brusden White. S.G. 346. Photo £150-250

New South Wales, 1905-10 Watermark Crown over A - *contd.*



126



130



127



131

x126 ★ 2/6d. blue-green, perf 11½x11, **watermark inverted**, fine mint. The only example recorded. Unlisted in Brusden White. S.G. 349a. Photo £100-150

x127 ★ 2/6d. blue-green, perf 11, **imperforate between stamp and margin at right**, fine mint. Rare. BW N67b, \$2,500. S.G. 349b. Photo £750-1,000

Note: This error was first recorded in the "Australian Stamp Journal" in November 1910 and was listed in the Brusden White catalogue in 2004. The current census records that there are twelve examples known, including a vertical strip of six in the H.L. White collection. Of the six examples in private hands, only two are in fine condition, including this stamp. The others are unused or affected by toning.

PROVENANCE:
Hutson, February 2013

x128 The range of errors comprising 1d. top left corner block of nine with double perforations, 2d. corner blocks of four (2, one perf 11½x11) with double perforations, 2½d. with offset, 10d. perf 12x11½ used block of four with watermark inverted (unrecorded by Brusden White) and perf 11 mint block of four with watermark inverted, and 2/6d. perf 12x11½ used with watermark inverted. A good lot for the specialist £150-200

x129 ★田 1907 ½d. blue-green and 1d. dull rose top right corner blocks of four, the right vertical pair in both **without watermark**, fine mint. Very scarce and under-catalogued. BW N6aa, N14ab, \$400+; S.G. 353, 354 £100-150

x130 ○ 1907 2d. cobalt-blue used pair, **watermark sideways**, some minor discolouration on reverse not affecting fine appearance. Very rare, this pair and three used singles are the only examples recorded. BW N19ab; S.G. 355a, £650+. Photo £500-600

PROVENANCE:
John Bell, 2013

x131 ★田 1907 4d. orange-brown top left corner block of four, the left vertical pair **without watermark**, fine mint, the stamps unmounted. Rare, one other example in a block of four, with only one unit showing the error is recorded. RPSV Certificate (2010). BW N31aa, \$5000+; S.G. 357. Photo £750-1,000

OFFICIAL STAMPS



132



133



134

- x132 ★ 1880-88 perf 10 5/- deep purple, **overprint double**, unused with large part original gum; light vertical crease and some shortish perfs at lower right. The only unused example recorded. One of the great overprint errors of the New South Wales Officials. R.P.S. (1940 and 2003) and B.P.A. (2010) Certificates. S.G. O14a, £4250. Photo £2,500-3,000

Note: The discovery of this error first came to the notice of collectors when this stamp was auctioned by Harmer Rooke in the Steinway sale of 1939. It was bought by the London dealer Tommy Allen who had it certified at the RPS in 1940. It was listed in the 1995 Stanley Gibbons catalogue.

PROVENANCE:
Theodore Steinway, October 1939
T. Allen
William Frazer, September 2003
“Alvarado”, May 2010

- x133 ○ 1880-88 perf 10 5/- deep purple, **overprint double**, cancelled leaving error clearly visible, small concealed tear at top left otherwise fine. Rare, one of two used examples recorded. RPSV Certificate (2015). S.G. O14a, £1700. Photo £600-800

- x134 ★ 1880-88 perf 10, 5/- rose-lilac, **overprint double, one albino**, fine mint. The only example recorded. RPSV Certificate (2009). S.G. O14ba, unpriced. Photo £500-750

Note: Discovered in 2009, this stamp led to the listing in the 2012 Stanley Gibbons catalogue.



135

- x135 ★田 1880-81 perf 10 10d. lilac block of four, **overprint double, one albino**, fine mint. Rare. RPSV Certificate (2013). S.G. O18aca, £1900. Photo £800-1,000

PROVENANCE:
Hutson, February 2013

New South Wales, Official Stamps - *contd.*

1882-85 ISSUES

- x136 1d. orange used (centred to lower right) and 1d. scarlet mint (centred to upper left), both perf 11x12 with **double impression of overprint**, fine. RPSV Certificate for used. S.G. O20b £100-200
- x137 ★ 1d. scarlet, perf 11x12, horizontal pair with interpanneau margin at left, **double impression of overprint**, fine mint. S.G. O20b £100-200



138



139

- x138 ○ 2d. blue, perf 11x12, **“O” of “OS” omitted**, fine used. The only example recorded. RPSV Certificate (2013). S.G. O21. Photo £100-200
- x139 ★ 2d. blue with wing-margin at right, perf 13x11, **double impression of overprint**, fine used. The only example recorded. RPSV Certificate (2012). S.G. O21a. Photo £100-150



140

- x140 ★ 2d. blue, perf 11x12, block of ten (5x2) with margin at top, **overprint double**, unused with large part or full original gum, the upper row with crease along top which does not affect appearance. Rare, the only mint multiple of a double overprint of the New South Wales Officials and the premier item of this issue. B.P.A. Certificate (2008). S.G. O21ca, £9500+. Photo £2,500-3,000



141



142



- x141 ○ 2d. blue, perf 11x12, a horizontal pair with **overprint double**, a few clipped perfs otherwise fine used. The only used multiple recorded. S.G. O21ca, £800. Photo £200-300
- x142 ○ 2d. blue, perf 11x12, two used examples with **overprint double** showing differences of spacing, fine. S.G. O21ca, £800. Photo £200-300



143



144



145

- x143 ★田 3d. yellow-green (7mm.), perf 10, a block of four **imperforate between stamps and margin at right**, the right hand stamps showing marginal lines and no trace of the Crown over NSW watermark, fine mint. Only one other block of four recorded. S.G. O22. Photo £150-200
- x144 ⊕田 3d. yellow-green (7mm.), perf 10, a block of twelve (3x4) with margin at top, **overprint double, one albino**, the top row with horizontal crease at top and one with small tone on reverse, otherwise fresh and fine unmounted mint. The largest recorded multiple. Rare, a block of four and a single are also recorded. RPSV Certificate (2009). S.G. O22aa, £1920+. Photo £750-1,000
Note: The discovery of this block in 2009 led to its listing in the 2011 Stanley Gibbons catalogue.
- x145 ★田 3d. yellow-green (7mm.), perf 10, a block of four with **watermark sideways**, unused with large part original gum, the upper pair with some tone spots, one of which just shows through to face. The only recorded block of this error. RPSV Certificate (2008). S.G. O22a, £900+. Photo £250-300

New South Wales, Official Stamps, 1882-85 Issues - *contd.*



146

- x146 ★ 3d. yellow-green (7mm.), perf 12, **overprint double**, **one albino**, unused with part original gum, horizontal crease and small thin, neither affecting appearance. Rare, the only example recorded. RPSV Certificate (2014). S.G. O22ba, £250. Photo £150-200
- Note: Discovered in 2014, this stamp led to its listing in 2016 Stanley Gibbons catalogue.*



147

- x147 ○ 3d. yellow-green (7mm.), perf 12x10, **overprint double**, neatly cancelled, some clipped perfs, fine and one of the major errors of the New South Wales Officials. Rare, only three examples recorded of which this is the finest and much under-catalogued. B.P.A. Certificate (2001). S.G. O22ca, £650. Photo £750-1,000
- PROVENANCE:
"Alvarado", May 2010
- x148 ★ 3d. yellow-green (5.5mm.), perf 10, a block of twelve (4x3) with margin at top, **watermark sideways**, fine mint. The largest multiple recorded. S.G. O24a, £480+ £200-300
- PROVENANCE:
"Alvarado", May 2010
- x149 ★ 3d. bluish green (5.5mm.), perf 10x12, a block of twenty (5x4) with **watermark reversed**, one tiny tone spot on reverse, otherwise fresh and fine mint. S.G. O25, £240+ £100-200



150



151

- x150 6d. mauve perf 10 used and perf 11x12 mint, both with **double overprint**, the latter with thin at top left. Scarce. S.G. O31, O31e £100-200
- x151 ○ 6d. mauve with wing-margin at right, perf 10, showing **overprint double**, cancelled by roller of bars leaving error clearly visible, fine. The only example recorded. S.G. O31. Photo £150-200



152

- x152 ★ 8d. yellow from the foot of the sheet, perf 10, **overprint double**, unused with large part original gum; horizontal crease towards foot. The only unused example recorded. S.G. O32aa, unpriced. Photo £750-1,000
- Note: In the "Alvarado" sale this stamp had a R.P.S. Certificate (2003) which now not present.*
- PROVENANCE:
William Frazer, September 2003
"Alvarado", May 2010



153

- x153 ★ 8d. yellow, perf 12x10, **overprint double**, unused with part original gum, tone spot on reverse otherwise fine. The only unused example recorded. S.G. O32ba, £1300. Photo £750-1,000
- Note: There are no contemporary reports of this error until the sale of this mint example in the Slade Slade collection in 1979. It was listed in the 1984 Stanley Gibbons catalogue.*
- PROVENANCE:
E.R. Slade Slade, April 1979

New South Wales, Official Stamps, 1882-85 Issues - *contd.*



154



155

x154 ○ 8d. yellow, perf 12x10, **overprint double**, lightly cancelled leaving error clearly visible, fine. The only used example recorded. Ceremuga Certificate (2013). S.G. O32ba, unpriced. Photo £500-750

x155 ★ 8d. yellow from the foot of the sheet, perf 11, **overprint treble**, unused with small part original gum; creased and thinned. The only unused example recorded. B.P.A. Certificate (1987). O32db, unpriced. Photo £500-750



156



157

x156 ○ 8d. yellow, perf 11, **overprint treble**, centrally cancelled by slightly heavy Sydney datestamp though error still clearly visible, minor tone spot at upper right otherwise fine. Three used examples recorded. B.P.A. Certificate (2001). S.G. O32db, £1200. Photo £500-750

x157 ○ 8d. yellow, perf 11, **overprint treble**, indistinct cancellation, crease at lower right, good appearance. Three used examples recorded. S.G. O32db, £1200. Photo £500-750

PROVENANCE:
Hutson, February 2013



158

x158 ○ 1/- black, perf 11x12, **overprint double**, a used rejoined pair with error clearly visible, the right stamp with slightly rounded corner otherwise fine. Two pairs (one in the Royal Collection) and six singles recorded. RPSV Certificate (2013). S.G. O33ba, £1000. Photo

£800-1,000



159

x159 ○ 1/- black, perf 11x12, **overprint double**, fine used. Two pairs (one in the Royal Collection) and six singles recorded. S.G. O33ba, £500. Photo

£400-500

**THIS AUCTION IS CONDUCTED
BEHIND CLOSED DOORS.**

**FOLLOW THE AUCTION AND BID ON SPINKLIVE
AS IF YOU WERE IN THE ROOM.**

TELEPHONE AND COMMISSION BIDDING ARE ALSO WELCOME.

New South Wales, Official Stamps - *contd.*



160

- x160 ★田 1888-90 Centennial 2d. Prussian blue block of four, perf 11x12, **overprint double**, one **albino**, fine mint. Only one other single of this error is recorded. S.G. O40aa, unpriced. Photo

£750-1,000



161



162

- x161 ★ 1888-90 Centennial 2d. Prussian blue, perf 11x12, **overprint double**, fine mint. The only example recorded. RPSV Certificate (2009). S.G. O40ab, unpriced. Photo

£500-750

Note: Discovered in 2009, this stamp led to the listing in the 2012 Stanley Gibbons catalogue.

- x162 ★ 1888-90 Centennial 6d. carmine, perf 11x12, **double impression of the overprint**, unused with small part original gum; hinge remnant and slight diagonal crease. The only example recorded. RPSV Certificate (2011). S.G. O42ab, unpriced. Photo

£100-150



163

- x163 ○ 1888-90 Centennial 5/- deep purple, perf 10, two used examples, one **imperforate at right between stamp and margin**, the other **imperforate between stamp and margin at foot**, fine. Very scarce with only a couple of examples of both recorded. S.G. O49. Photo

£150-200



164



165

- x164 ★ 1891 ½d. on 1d. grey, **overprint double**, centred to right, fine mint. Very rare, three examples recorded. RPSV Certificate (2008). S.G. O55a, £2500. Photo £1,500-2,000
- x165 ★ 1891 7½d. on 6d. brown, **offset of overprint on face**, unused without gum, small thin at top. Rare, only one other example recorded. RPSV Certificate (2013). S.G. O56. Photo £100-200

Note: This error occurred after the "OS" overprint forme was offset on the face of the stamp. Interestingly, the forme is from a different position from that of the stamp since the stamp shows the variety "O" sideways.

QUEENSLAND

- x166 1861-68 Chalon range showing **double perforations** comprising mint 1860-61 clean-cut perf 1d. carmine-rose with large part original gum, 1862-76 perf 13 rough 1d. orange-vermilion pair with small part original gum and 1868 3d. greenish grey with small part original gum; and used 1862-67 perf 13 rough 2d. blue and 1/- grey, 1866-78 perf 13 6d. pale apple-green (vertical crease) and perf 12 2d. blue (small light stain at top). The unused examples are rare. Cat. £590+ £250-300

1862-67 THICK TONED PAPER, NO WATERMARK, PERF 13 ROUGH



167



168

- x167 ○ 1d. orange-vermilion **imperforate** horizontal pair, roughly separated at left otherwise fine used. The finer of the two examples in private hands, the other is badly cut-into at foot. Rare and under-catalogued. S.G. 22a, £2750. Photo £2,500-3,000

Note: This error was first reported by the London Philatelist in June 1916 with the pair in the Hausberg Collection sold to King George V. Both examples in private hands have been auctioned on only a couple of occasions in the past 100 years.

PROVENANCE:
Leslie Nelson, October 2012

- x168 ★ 2d. blue **imperforate between stamp and margin at foot**, very fine unused with large part original gum. The only example recorded. S.G. 24. Photo £1,000-1,200

Queensland, 1862-67 Thick Toned Paper, No Watermark, Perf 13 Rough - *contd.*



169

x169 ○

2d. blue horizontal pair **imperforate between**, lightly cancelled, small corner crease, fine used. Extremely rare. The only example in private hands with another pair in the Royal Collection. S.G. 24b, £15,000. Photo

£8,000-10,000

Note: This error was first reported in "Stanley Gibbons Monthly Journal" in September 1895.

PROVENANCE:

C.J.L. Snowden, February 1953

Leslie Nelson, October 2012

x170 ★ ㊦

2d. blue block of eight (2x4), the centre block of four **imperforate between horizontally** (i.e. two pairs), unused with large part original gum with the errors being unmounted, the odd minor tone spot not affecting the errors. The premier mint error of the Queensland Chalons. S.G. 24c, £11,000. Photo

£6,000-8,000

Note: A used pair of this error was first reported in the "Stanley Gibbons Monthly Journal" in September 1895 and listed by Stanley Gibbons in 1917. In 1925 the spectacular "Mayfair Find" was auctioned by Harmers of London which featured a mint block of one hundred and six with one row of twelve imperforate horizontally between. The block was subsequently broken down to eight pieces with two pairs in a mint block of six in the Royal Collection. Of the remaining ten pairs available to collectors, three are faulty, leaving seven fine examples. The largest known multiple of this error are the two pairs contained in this block of eight. Another poorly centred block of eight is recorded, however, it has not been seen since the Ernest Collins sale in 1928.

PROVENANCE:

Mayfair Find, 1925

General Robert Gill, June 1957

Leslie Nelson, October 2012



170



171

x171 ○

6d. yellow-green horizontal pair **imperforate between**, lightly cancelled, fine. The only example recorded and the only imperforate between pair of the 6d. Chalon. The premier used imperforate between error of the Queensland Chalons. S.G. 27a, £16,000. Photo

£8,000-10,000

Note: Although listed by Stanley Gibbons in 1923, the first published reports of this error did not appear until the "London Philatelist" in July 1930.

PROVENANCE:

C.J.L. Snowden, February 1953

Leslie Nelson, October 2012



172

x172 ★

1/- grey strip of three with **perforations double at foot of second and third stamps**, unused without gum; straight-edge at left. The only unused examples of this error recorded and the second largest unused multiple of this stamp known. S.G. 29, £1,125+. Photo

£750-1,000



173

x173 ○

1/- grey horizontal pair **imperforate between**, fine used. Extremely rare, three examples are recorded in private hands, with another pair residing in the Royal Collection. S.G. 29a, £17,000. Photo

£6,000-8,000

Note: This error was first reported in the "Stanley Gibbons Monthly Journal" in September 1895.

PROVENANCE:

Ernest Collins, October 1928

Fair, February 1989

Queensland, 1862-67 Thick Toned Paper - *contd.*



174

x174 ○

1864-65 perf 13 2d. deep blue strip of three, **imperforate between first and second stamp** and with **perforations double** along top, lightly cancelled. Extremely rare, the only example recorded in private hands. S.G. 46b, £16,000. Photo

£8,000-10,000

Note: There are no contemporary reports of this error until its listing in the 1917 Stanley Gibbons catalogue. Most of the errors listed in this year were in the Hausberg Collection, sold by Stanley Gibbons in 1916. King George V had first offers on this Queensland collection, filling many of the errors, including an example of this imperforate between.

PROVENANCE:
C.J.L. Snowden, February 1953
Nelson, October 2012



175

x175 ☒

1864-65 perf 13, 6d. yellow-green, imperforate between stamp and margin at foot, cancelled by light sunburst "32" on 1868 (2 Apr.) envelope from Bowen to Scotland, fine. Rare, the only example recorded. S.G. 47. Photo

£750-1,000

Note: Errors of the Australia Colonies used on cover are exceedingly rare.



176

x176 ★ ㊦

1864-65 perf 12½x13 1d. orange-vermilion block of eight (4x2), **imperforate between stamps and margin at foot**, unused with large part original gum (the lower row unmounted), one with small light tone on reverse, otherwise fine and of superb appearance. RPSV Certificate (2008). S.G. 50. Photo

Note: This error was known to collectors in the 1920s with a strip of three in a mint block of eighteen in the Vickery collection in the Powerhouse Museum in New South Wales. The first publication of this error was with the sale of a strip of four in a mint block of sixteen in the Slade Slade sale in 1979. All the examples of this error appear to have originated from the same sheet, and now comprise this block of eight, the Slade Slade block of sixteen and the strip in the Vickery collection.

£4,000-5,000

PROVENANCE:

Richard Stevenson, May 2003

Bernie Manning, June 2009

STAMPS & COVERS OF GREAT BRITAIN

13 MAY 2020 | LONDON

Queensland - contd.

1866-67 LITHOGRAPHED



177



178



179

x177 ★

4d. reddish lilac, First Transfer, **double transfer** with some letters of the word "QUEENSLAND" and other portions of the upper part of the design doubled, unused; thinned at top. A rarity, being the only unused example recorded in private hands. There is another example in the Royal Collection. S.G. 53b, £5500. Photo

£3,000-4,000

Note: The first recording of this error was by A.L. Pemberton in "The Philatelic Journal" in March 1951 of which a copy accompanies this lot. The doubling can be clearly seen at the top of the stamp. This is the stamp illustrated in the Stanley Gibbons catalogue.

PROVENANCE:

Stone, October 1977

Alan Griffiths, October 2012

x178 ○

4d. reddish lilac, First Transfer, **double transfer** with some letters of the word "QUEENSLAND" and other portions of the upper part of the design doubled, small part cancellation at left leaving much of the design clear. The only used example recorded. S.G. 53b, £2500. Photo

£2,000-2,500

PROVENANCE:

Alan Griffiths, October 2012

x179 ★

4d. lilac, Second Transfer, "FOUR" **largely missing**, unused, two thin spots otherwise a good example of this rarity, being the only unused example recorded. RPSV Certificate (2016). S.G. 55b, unpriced. Photo

£2,000-2,500



180



181

x180 ○

4d. lilac, Second Transfer, "FOUR" **largely missing**, fine used with sunburst cancel. Five examples of this error across both shades are recorded. S.G. 55b, £550. Photo

£800-1,000

PROVENANCE:

Alan Griffiths, October 2012

x181 ○

4d. lilac, Second Transfer, "FOUR" **largely missing**, cancelled at top leaving error clearly visible; small tone spot on reverse and a touch soiled otherwise fine. Five examples across both shades are recorded. S.G. 55b, £550. Photo

£750-1,000



182



183



184

x182 △ 4d. grey-lilac, Second Transfer, “**FOUR**” largely missing, fine used on small piece. Five examples across both shades are recorded. S.G. 56b, £600. Photo £800-1,000

PROVENANCE:
Alan Griffiths, October 2012

x183 ○ 5/- pale rose vertical pair, **imperforate between**, cancelled by “GPO” in bars in both red and in black, slightly thinned otherwise fine. One of two examples recorded in private hands with another pair in the Royal Collection. S.G. 58a, £9000. Photo £3,500-4,500

Note: This error was first reported in the “London Philatelist” in July 1892 and listed by Stanley Gibbons in 1917. All three pairs are faulty and derive from the same block. This is the finer of the two pairs available in private hands.

PROVENANCE:
C.J.L. Snowden, February 1953
Leslie Nelson, October 2012

x184 R 1868-74 2d. blue reprint, a horizontal pair **imperforate between**, fine mint. See footnote after S.G. 82. Photo £400-500

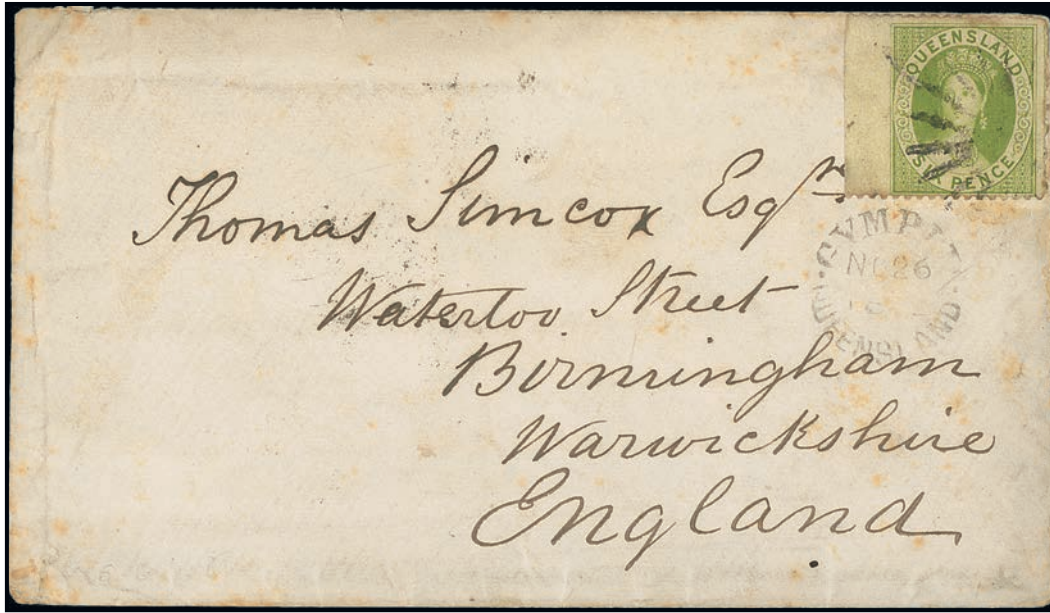
Note: Although a reprinted sheet of 120 comprising ten examples of this error should exist, only four pairs have been recorded.



185

x185 ★ 1868-74 perf 13, 6d. yellow-green **imperforate between stamp and margin at left**, unused without gum, fine. The only unused example recorded. S.G. 68. Photo £500-750

Queensland - *contd.*



186

- x186 ☒ 1868-74 perf 13, 6d. yellow-green **imperforate between stamp and margin at left**, cancelled by unclear sunburst on 1873 envelope to England showing "GYMPIE/QUEENSLAND" c.d.s. alongside; the envelope a little soiled in places. The only used example recorded. S.G. 68. Photo

£500-750
- x187 ○ 1868-78 perf 13, 1d. orange-vermilion block of six (3x2), 2d. bright blue and 6d. yellow-green with **watermark reversed** and 2d. pale blue and 6d. yellow-green with **watermark inverted and reversed**; perf 12 1d. pale orange-vermilion, 2d. blue and 4d. yellow with **watermark reversed**, and 2d. blue, 2d. deep blue and 6d. yellow-green with **watermark inverted and reversed**; all used, generally fine. A scarce group

£100-200

- x188 ★田 1868-75 perf 13 1d. orange-vermilion **imperforate** block of four with margin at top, fine unused without gum. S.G. 83a, £1600+. Photo

£800-1,000

Note: Although this error is common as a pair, blocks of four are rare, being the second largest multiple recorded behind a block of sixteen. Three are recorded, one being faulty, with another in the Royal Collection.

PROVENANCE:
Leslie Nelson, October 2012



188



189

- x189 ○ 1868-75 perf 13 1d. orange-vermilion **imperforate** horizontal pair, both cancelled with “QL” in Brunswick Star, fine. The only used example recorded. S.G. 83a, unpriced. Photo £800-1,000
- PROVENANCE:
Alan Griffiths, October 2012



190



191

- x190 ★ 1868-75 perf 13 6d. apple-green **imperforate** block of six (3x2) with margin at foot, unused without gum, fine. S.G. 92a, £2100+. Photo £1,250-1,500
- Note: Blocks of six are the largest multiple known and two are recorded.*
- PROVENANCE:
Geo. Ginger, November 1943
Leslie Nelson, October 2012
- x191 ★ 1876-78 perf 12, 2d. pale blue block of nine with margin at top, **watermark reversed**, unused with large part original gum, some re-inforced perfs and the top row with light horizontal bend, otherwise fresh and fine mint. The largest multiple recorded. RPSV Certificate (2007). S.G. 98, £1170. Photo £1,500-2,500
- PROVENANCE:
Bernie Manning, June 2009

Queensland - contd.



192



193

- x192 ○ 1876-78 perf 12, 6d. yellow-green horizontal pair **imperforate between**, lightly cancelled, straight-edge at left and two short perfs at foot, fine. The only example recorded. Unlisted in Stanley Gibbons. S.G. 106. Photo £3,000-4,000
- x193 ★ 1880 lithographed, 2/- pale blue with **watermark inverted and reversed**, fine mint. Very scarce. S.G. 118. Photo £100-150



194



195

- x194 ○ 1880 lithographed, 2/- blue horizontal pair **imperforate vertically**. This pair has had a light fiscal cancel removed, however it is the only example recorded. S.G. 119a. Photo £2,000-3,000

Note: The first reference to this error was the appearance of this as an unused pair in the Pack sale in 1944. It subsequently appeared in a Robson Lowe sale in 1977 with a clear R.P.S. Certificate dated 1970 (now lost) as unused. With higher resolution equipment available now, it appears that this pair has a light fiscal cancel removed. However, it does not detract from the appearance and rarity of this pair, being the only known example.

PROVENANCE:
C.L. Pack, December 1944
Garven Thomas, December 1982

- x195 ○ 1879-81 watermark Crown over Q Type I, 1d. reddish brown Die II horizontal pair, **imperforate between**, indistinct sunburst cancellation; crease and left-hand stamp with small tear at foot. An attractive pair of this rare error, being the only example recorded. R.P.S. Certificate (1987). S.G. 128ab, £2250. Photo £1,000-1,500

PROVENANCE:
Alan Griffiths, October 2012

1879-81 WATERMARK CROWN OVER Q TYPE II



196



197



198

- x196 ○ 1d. dull orange Die II horizontal pair, **imperforate between**, cancelled by Sunburst "119", some ironed-out creases otherwise fine. The only example recorded. RPSV Certificate (2008). S.G. 135ac, unpriced. Photo £1,500-2,000

Note: Discovered in 2009, this pair led to the listing in the Stanley Gibbons catalogue in 2011.

- x197 ○ 1d. scarlet Die I horizontal pair, **imperforate between**, lightly cancelled, fine. The finer of the two recorded examples, the other being damaged. RPSV Certificate (2009). S.G. 136aa, £2250. Photo £1,500-2,000

Note: This error was discovered in 2008 which led to its listing by Stanley Gibbons in 2011.

PROVENANCE:
Bernie Manning, June 2009

- x198 ○ 2d. bright blue Die I horizontal pair, **imperforate between** and imperforate at left, indistinct cancellations; defective at lower right corner and other minor imperfections though a presentable example of this very rare error. The only example recorded in private hands. S.G. 139c, £2500. Photo £1,500-2,000

Note: This error was first reported in the "London Philatelist" in December 1902 and catalogued by Stanley Gibbons in 1917. Two used pairs are recorded, the other being in the H.L. White collection in the New South Wales State Library.

PROVENANCE:
Hausberg, Stanley Gibbons 1916
Hobbs, December 1983
Fair, February 1989
Alan Griffiths, October 2012



199

- x199 ★ 4d. orange-yellow horizontal pair **imperforate vertically**, fine mint. The only example recorded and the premier piece from Queensland during this period. RPSV Certificate (2009). S.G. 141a, £12,000. Photo £5,000-6,000

Note: This error was first reported in the "London Philatelist" in December 1902. With the purchase by Stanley Gibbons of the Hausberg collection in 1916 it was listed in their catalogue in 1917.

PROVENANCE:
Hausberg, Stanley Gibbons 1916
Bernie Manning, June 2009

Queensland, 1879-81 Watermark Crown over Q Type II - *contd.*



200



201

x200 ★

6d. yellow-green horizontal pair **imperforate vertically** and at top, unused without gum, the right-hand stamp with ironed-out vertical crease otherwise fine. The only example recorded. RPSV Certificate (2008). S.G. 143a, unpriced. Photo

£2,000-3,000

Note: This error was first reported in the "London Philatelist" in December 1902. With the purchase by Stanley Gibbons of the Hausberg collection in 1916 it was listed in their catalogue in 1917.

PROVENANCE:
Hausberg, Stanley Gibbons 1916

x201 ★

1882-91 perf 12 1d. deep vermilion-red strip of three with margin at left, **imperforate vertically** and at foot, unused without gum; two ironed-out vertical creases, the right-hand pair with some surface damage and small stain in selvedge. The only example recorded and not listed by Stanley Gibbons. RPSV Certificate (2013). S.G. 167. Photo

£750-1,000



202

x202 ★田

1890 perf 12½, 13 1d. vermilion-red **imperforate** block of four, central vertical bend, fine mint. The third largest multiple known. RPSV Certificate (2008). S.G. 187a, £600+. Photo

£300-400



203

x203 ○

1890 perf 12½, 13 1d. vermilion-red **imperforate** horizontal pair, fine used. S.G. 187a, £325. Photo

£150-200



204

x204 ☒ 1890 perf 12½, 13 1d. vermilion-red **imperforate** horizontal pair tied by Barred Numeral "121" on 1895 (18 Nov.) envelope (central vertical fold) from Clifton to Brisbane, fine. Seven covers recorded. S.G. 187a. Photo £250-300

PROVENANCE:
Alan Griffiths, October 2012

x205 ★ 1882-90 selection including rare 1882-91 perf 12 1/- lilac from the lower right corner with **double perforations at top and at foot** and 1890 2d. pale blue marginal block of four and singles (2, one used) with **perforations double** on one side; fine £100-150



206

x206 ★ 1895 unwatermarked with blue burelé band at back, 1d. vermilion-red block of six (3x2) with margin at top, **perforations double** at left and the centre stamp in top row showing "PE" of "PENNY" **omitted**, some re-inforced perfs, fresh and fine mint. S.G. 206b, £375+. Photo £200-300

x207 ★ 1895-96 issue, a predominantly mint range of errors including ½d. block of four, 1d. corner block of thirty and 2d. corner block of twelve with **perforations double** on one side, and 1d. lower right corner block of nine with **offset**; also some scarcer watermark errors £200-300

Queensland - *contd.*



208

x208 ★田

1895-96 perf 12½, 13 ½d. green, the unique block of four with **double impression**, unused with large part original gum, fine. RPSV Certificate (2009). S.G. 208a, £8000+.

Note: This error is only a recent discovery, being listed by Stanley Gibbons in 1987. Two mint singles and two used examples are recorded.

£2,000-2,500



209

x209 ○

1895-96 perf 12½, 13 ½d. dark green, **printed double**, a good used example with some minor faults. Not listed by Stanley Gibbons and a great rarity with only two examples in private hands. RPSV Certificate (2005). S.G. 209. Photo

Note: There is a great contrast between this stamp and the double impression in the previous lot. This stamp was known to collectors in the 1920s with an example in the Sir William Dixon collection which was donated to the New South Wales State Library.

£1,000-1,500



210

x210 ★

1895-96 perf 12½, 13 ½d. dark green horizontal pair **printed both sides**, the second impression diagonally inverted. A rare mint pair showing the usual gum discolouration associated with this error. S.G. 209a, £550. Photo

Note: This error was first recorded in the "London Philatelist" in December 1901 and was listed in the 1908 Stanley Gibbons catalogue. One sheet was discovered with the second impression printed diagonally on the reverse. Although singles are common, the largest multiple appears to be this pair.

£100-150

- x211 ★ 1897-1908 1d. marginal vertical pair with **strong offset** on reverse; 1d., 2d., 3d., 5d. and 2/- corner block of four with **perforations double**, fine mint. The 2/- the only example recorded



212



213



214

- x212 ★ 1897-1908 1d. orange-vermilion, a top right corner example **imperforate between stamp and margin at right** caused by a paper fold, unused with slightly toned part original gum, the only example recorded. S.G. 232. Photo £200-300

- x213 ★田 1897-1908 1d. vermilion, perf 12x9½ (Brusden White Q9), an unused block of four **imperforate between stamps and margin at left**, fine. The only example recorded. Cat. \$1200 as normals. Rare. Photo £400-500

Note: There has been suggestions that this is an unofficial issue. However, used examples from a couple of towns suggest that it was issued to the public. This block is referred to in Brusden White (page 1/63) with staple holes in the left margin indicating it may have been issued in a booklet format.

- x214 ★ 1897-98 1d. vermilion, a rejoined top right corner vertical pair showing **double zigzag roulettes in black**, unused without gum. The only example recorded. A striking error. S.G. 256. Photo £150-200



215



216

- x215 ★田 1907-11 1d. vermilion block of four, **imperforate between stamps and margin at right**, fine mint. Six blocks of four recorded. BW Q11ba, \$800+; S.G. 288. Photo £300-400

- x216 ★田 1907-11 1d. vermilion **imperforate** block of four, unused with large part original gum, the upper pair with creases. The second largest multiple. S.G. 288a, £800+. Photo £400-500

Queensland - *contd.*

POSTAL FISCALS



217

x217 ★[®]

1871-72 Crown over Q watermark, 1d. mauve block of nine, **perforations double** between columns two and three, fresh and fine unused with large part original gum. Ceremuga Certificate (2004). S.G. F16, £630+. Photo

£350-450



218

x218 ○

1871-72 Crown over Q watermark, 6d. red-brown horizontal pair **imperforate vertically**, centrally cancelled, separation faults consistent with this error, fine. The only example recorded. RPSV Certificate (2010). S.G. F17a, unpriced. Photo

£1,500-2,000

Note: The discovery of this error in 2010 led to its listing in the 2012 Stanley Gibbons catalogue.



219

x219 ○ 1871-72 Crown over Q watermark, 2/- blue vertical pair **imperforate horizontally**, fiscally used, the lower stamp with horizontal crease otherwise fine. The only example recorded. RPSV Certificate (2010). S.G. F19. Photo £750-1,000

Note: The discovery of this error in 2010 led to the note in the Stanley Gibbons catalogue in 2012.



220

x220 ★ 1878-79 watermarked 1d. violet horizontal pair **imperforate between**, fine mint. The only example recorded. RPSV Certificate (2010). S.G. F34a, unpriced. Photo £1,500-2,000

Note: The discovery of this error in 2010 led to its listing in the 2012 Stanley Gibbons catalogue.



The Royal Philatelic Society London

We are pleased to receive proposals for membership of the Society which is through election.
If you are interested in membership, please contact us at secretary@rpsl.org.uk
If you have no proposer or seconder, please contact us for further information.

Tel: 00 44 (0)20 7486 1044 | www.rpsl.org.uk

The world's oldest and most prestigious philatelic society, established 1869, with over 2,000 members in more than 70 countries.

Extensive premises in London's West End house the Society's superlative library, plus Museum and Archive, and provide first-class meeting facilities.

The Society's Online Catalogue provides access to over three-quarters of a million philatelic indexes to members world-wide.

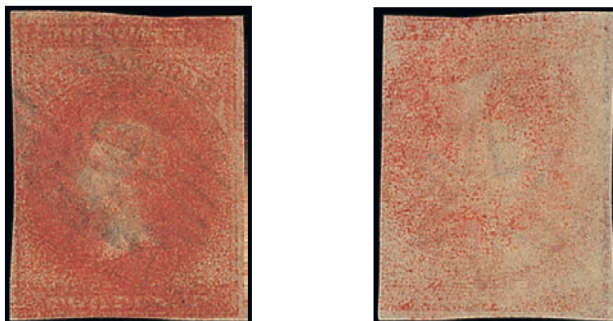
A fascinating programme of displays and meetings throughout the year, supplemented by regional meetings and gatherings at major international events.

The Society publishes ten times a year its own journal, *The London Philatelist*, containing articles of outstanding philatelic research, in addition to publishing major philatelic works.

We are honoured to have Her Majesty Queen Elizabeth II as our Royal Patron

SOUTH AUSTRALIA

1856-58 PRINTED IN THE COLONY



221

x221 ○

2d. blood-red, **double impression and printed on both sides**, the second impression inverted, fine used and rare. The finer of the two examples in private hands. One of the great errors of South Australia and woefully under-catalogued at £1300. R.P.S. Certificate (1983). S.G. 8a. Photo

£2,500-3,000

Note: Although the printed both sides error was recorded by Napier and Smith in 1894, the distinction between the red and blood-red shades was not made until publication by the "Australian Stamp Journal" in July 1921. It was listed in the 1917 Stanley Gibbons catalogue. Three examples are recorded, one being in the Royal Collection.

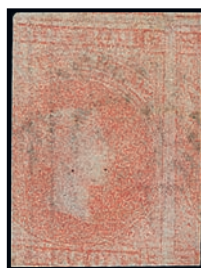


222

x222 ○

2d. red **printed double**, touched at right, cancelled by dumb obliterator, fine. The second impression is centred 2mm. down and 8mm. to the right. A great rarity, being the only double print of the South Australia imperforates and the only example recorded. RPSV Certificate (2012). S.G. 9. Photo

£2,500-3,000



223

- x223 ○ 2d. red with **offset** on reverse, close to good margins, fine used. The only example recorded. S.G. 9. Photo £250-300

PROVENANCE:
Michael Blake, February 2014



224



225

- x224 ○ 2d. red **printed both sides**, the second impression upright, close to good margins, lightly cancelled in blue, fine. S.G. 9a. Photo £750-1,000

- x225 ○ 2d. red **printed both sides**, the second impression inverted, close to good margins, cancelled in blue, fine. B.P.A. Certificate (2007). S.G. 9a. Photo £750-1,000

Note: The first report of this error was in the "Philatelic Record" in December 1891 and was listed by Stanley Gibbons in 1903. Although no catalogue distinction has been made, it appears that the second printing in the upright position is rarer than the inverted. Fourteen examples have been recorded in private hands.

PROVENANCE:
T.W. Hall, February 1943



226

- x226 ○ 1858-59 rouletted 2d. red **printed both sides**, the second impression upright, a short stamp with roulettes or traces thereof on three sides, lightly cancelled. Rare and under-catalogued at £850. RPSV Certificate (2010). S.G. 15a. Photo £500-750

Note: This error was first recorded in the "Stanley Gibbons Monthly Journal" in February 1897 and listed by Stanley Gibbons in 1917. It is rare, and often confused with the same error from the Second Roulette issue of 1860. Three used examples are recorded in private hands, with two additional examples in the Royal Collection.

South Australia - *contd.*



227

x227 ○

1858-59 rouletted 1/- orange **printed both sides**, the second impression upright, roulettes or traces thereof on two sides, cancelled in blue, fine. One of the finest examples recorded of this popular error. S.G. 18a, £2000. Photo

£750-1,000

1860-69 SECOND ROULETTED ISSUE



228

x228 ○

1d. sage-green horizontal pair **imperforate between**, lightly cancelled at Adelaide (17.12.63), no signs of roulettes, fine. The only example recorded. One of the great rarities of South Australia. RPSV Certificate, 1989. S.G. 21a, unpriced. Photo

£1,500-2,000

Note: This error first came to the attention of collectors when this pair was auctioned in the 2007 Harry Lower sale and led to its listing in the 2010 Stanley Gibbons catalogue.

**THIS AUCTION IS CONDUCTED
BEHIND CLOSED DOORS.**

**FOLLOW THE AUCTION AND BID ON SPINKLIVE
AS IF YOU WERE IN THE ROOM.**

TELEPHONE AND COMMISSION BIDDING ARE ALSO WELCOME.



229

x229 ★ ㊦

1d. sage-green, a lower right corner block of eight (4x2) **gummed both sides**, a few reinforced roulettes, fine. A rare and most desirable multiple. RPSV Certificate (2008) states deep yellow-green which we believe to be incorrect. S.G. 21. Photo

£1,500-2,000

PROVENANCE:

Rev. James Mursell, October 1964

Harry Napier, May 1976

Harrison, June 1984

H.G. Lower, May 2007



230

x230 ★

1d. deep yellow-green horizontal strip of four, widely spaced **vertical rouletting doubled** on each stamp, cut-into at right, unused with large part original gum. S.G. 24, £1300+. Photo

£750-1,000

Note: This is the only mint multiple of South Australia to show double roulettes and this is believed to be the largest unused multiple of this shade.

PROVENANCE:

Michael Blake, February 2014

x231 ○

2d. pale vermillion, 1/- grey-brown and 1/- chestnut, all with **double impression**, fine used. RPSV Certificate (2008 or 2018) for both 1/-

£100-150

South Australia, 1860-69 Second Rouletted Issue - *contd.*



232



233



x232 ○

2d. pale vermilion **printed both sides**, the second impression upright, roulettes on two sides, lightly cancelled "2", fine. S.G. 24b, £550. Photo

£250-300

Note: This error was first reported in the "Philatelic Record" in August 1891 and listed by Stanley Gibbons in 1937. No distinction has been documented regarding the upright or inverted printings on the reverse. However, from examples examined, the upright printing on the reverse is very rare, with a couple of examples recorded.

x233 ○

2d. pale vermilion **printed both sides**, the second impression inverted, roulettes at left only, cancelled in blue, fine. S.G. 24b, £550. Photo

£250-300



234

x234 ○◻

2d. pale vermilion block of six **printed both sides**, the second impression inverted, roulettes or traces thereof on all sides, small piece missing at lower right, cancelled in blue, fine. One of the most significant pieces from South Australia. Holcombe Certificate (1987). S.G. 24b, £3300+. Photo

£2,000-2,500

Note: The largest multiple known is this block of six. The strip of three in the Fryar collection (the only other multiple recorded) is also cancelled on the 23rd February 1861 and these two pieces are almost certainly from the same sheet, however, their characteristics do not match to complete a block of nine.



235



236

- x235 ○

2d. pale vermilion horizontal pair **imperforate between**, roulettes on all sides, neatly cancelled by Port Adelaide c.d.s. (14.9.67), unusually fine. Unlisted by Stanley Gibbons in this shade. Photo

£500-700
- x236 ○

2d. bright vermilion horizontal pair **imperforate between**, traces of roulettes at top only, cancelled by Adelaide c.d.s. (21.6.67), fine. S.G. 26a, £900. Photo

Note: This error was first recorded in the "London Philatelist" in April 1904 and listed in the 1917 Stanley Gibbons catalogue. It comes in two distinct shades with the bright vermilion appearing to be the much scarcer.

£400-500



237

- x237 ○

6d. dull ultramarine horizontal strip of three, **imperforate between second and third stamps**, roulettes at left and right, lightly cancelled by G.P.O. Adelaide c.d.s., very fine. The only example recorded and much under-catalogued. S.G. 30a, £2500. Photo

PROVENANCE:
 Redman, April 1956
 J. Beresford, February 1958
 M. Burrus, November 1962

£2,500-3,000



238



239

- x238 ○

10d. on 9d. orange-red with "t" of "TEN" **omitted**, roulettes at right only, very lightly cancelled, fine. S.G. 35. Photo

£100-150
- x239 ○

10d. in black on 9d. yellow, **surcharge misplaced to right reading "TEN E"**, roulettes or traces thereof on all sides, clearly cancelled by Adelaide c.d.s. (13.10.69), fine. The only example recorded. S.G. 37. Photo

£100-150

South Australia, 1860-69 Second Rouletted Issue - *contd.*



240

x240 ○

10d. in black on 9d. yellow with **surcharge inverted at top**, neatly cancelled with Adelaide c.d.s. (10.11.69), roulettes on all sides, a superb used example of this iconic error of South Australia. RPSV Certificate (2005). S.G. 37a, £7500. Photo

£3,500-4,500

Note: This famous error was first recorded in the "Stamp Collectors Monthly" in April 1870 and listed by Stanley Gibbons in 1903. Over twenty examples are recorded, though most are faulty. This example is one of the finest known.

PROVENANCE:

William Frazer, September 2003



241

x241 ○

1/- yellow vertical pair **imperforate between**, roulettes at right and traces at upper left, lightly cancelled by Adelaide c.d.s., fine. A major error and the only example recorded. R.P.S. Certificate (1965). S.G. 38a, £6000. Photo

£3,500-4,500

Note: First reported in the "Australian Stamp Journal" in November 1913 and listed by Stanley Gibbons in 1950.

PROVENANCE:

Ferrari, June 1923

Ernest Collins, November 1928

Keith Mackenzie, February 1939

Rev. James Mursell, October 1964

Harry Napier, May 1976

H.H. Frenkle, September 1979

Michael Blake, February 2014



242



243

- x242 ★ 1/- grey-brown with **double impression**, roulettes on three sides, unused with part original gum, fine. Rare in unused condition. S.G. 39, £450+. Photo £100-150
-
- x243 ○ 1867-70 perf 11½-12½ x roulette, 6d. bright pale blue **rouletted vertically five times**, fine and lightly cancelled. The only example recorded. S.G. 56. Photo £100-150



244

- x244 ○ 1867-70 perf 11½-12½ x roulette, 10d. on 9d. yellow **printed on both sides**, cancelled "69" (Mosquito Flat), fine. S.G. 59a, £1300. Photo £400-500
- PROVENANCE:
A.E. Fryar, June 1955
Peter Jaffé, March 2006
- x245 ○ 1868-70 used selection comprising 1868-79 4d. dull purple, 6d. bright pale blue, 10d. in black on 9d. yellow, 1870-71 perf 10 1d. grey-green and 3d. on 4d. dull ultramarine and 1870-73 perf 10x11½-12½ 10d. on 9d. with **double perforations**, and 1868-79 6d. indigo and 1/- red-brown with **double impression**; generally fine and a difficult lot to duplicate £100-150
- x246 ○ 1868-70 used selection with one side **imperforate between stamp and margin** comprising 1870-71 4d. dull purple and 1870-73 perf 10x11½-12½ 3d. on 4d. pale ultramarine, 4d. slate-lilac and 10d. on 9d. yellow (2); generally fine £200-250

South Australia - *contd.*

1868-79 WATERMARK LARGE STAR, PERF. 11½-12½



247

x247 ○

1d. dark green **printed both sides**, lightly cancelled, top left corner rounded, fine. The only example recorded and under-catalogued at £1100. R.P.S. Certificate (1965). S.G. 64a. Photo

£1,500-2,000

Note: Although this error was listed by Stanley Gibbons in 1903, the first report in contemporary literature was in the "London Philatelist" in February 1915. This error is more frequently found overprinted "OS", yet this is still the only recorded unoverprinted example after one hundred years.

PROVENANCE:

Rev. James Mursell, October 1964
 Harry Napier, May 1976
 Peter Jaffé, March 2006



248

x248 ○

1d. deep yellow-green horizontal pair **imperforate between**, both neatly cancelled "46" (Hahndorf); straight edge at right, consistent with the error, otherwise fine. One of the major errors of South Australia. R.P.S. Certificate (1965). S.G. 65a, £3250. Photo

£2,500-3,000

Note: This error first came to light with the sale of the Napier collection in 1976 and was listed in the 1995 Stanley Gibbons catalogue.

PROVENANCE:

Harry Napier, May 1976
 H.H. Frenckle, September 1979



249



250



251



252

- x249 ○ “3-PENCE” on 4d. sky-blue with **double impression 1mm. to right**, fine used. Four examples recorded from this printing, this being the only one in sky-blue. S.G. 67. Photo £400-500
 - x250 ○ “3-PENCE” on 4d. sky-blue with “P” of “PENCE” virtually omitted, neatly cancelled by Adelaide c.d.s.; pressed horizontal crease at foot otherwise fine. An unusual variety being the only example recorded. S.G. 67. Photo £100-150
 - x251 ○ “3-PENCE” on 4d. deep ultramarine **printed double**, excellent colour, neatly cancelled by large part Adelaide c.d.s., the odd shortish perf, fine. The finest of the three examples recorded. B.P.A. Certificate (2009). S.G. 68. Photo £500-750
- Note: This error should not be confused with the double impression varieties which are prevalent in the stamps of South Australia. Occasionally, some stamps were printed double, as in the case of this example, where the complete doubling of the design can be seen at the left. This stamp is almost identical in characteristics to the Ferrari example.*
- PROVENANCE:
Peter Jaffé, March 2006
- x252 ○ “3-PENCE” on 4d. deep ultramarine with “PENC” of **surcharge omitted** (minor traces only); a few shortish perfs and trace of thin at top. Centred to lower left and an unusual surcharge variety, which may explain the surcharge omitted error. S.G. 68. Photo £100-150

SPINK LIVE

Spink Live is now running on a new and improved bidding platform
 Accessible online through www.spink.com and also available iOS and Android devices

Bidding on ‘Spink Live’ remains free of charge

MY ACCOUNT

- Login
- Consign An Item
- Watched Lots
- My Bids

- Medals
- Stamps
- Watches
- Whiskies & Spirits
- Wines

Lot 3: SEAL, 5 songs, including all US&UK

Lot 4: RANDY CRAWFORD & JOE SAMPLE, 4 US&UK

LOT 2010 - CURRENT B

Slide to bid €

CURRENT HISTORY

Click to Login / Register

Tick your Interests

Scroll the Lots

Slide to Bid

Download on the App Store

GET IT ON Google Play

For any enquiries or further assistance please contact:
 Tel: +44 (0)20 7563 4112 | Email: spinklive@spink.com

SPINK

WHERE HISTORY IS VALUED

South Australia, 1868-79 Watermark Large Star, Perf. 11½-12½ - *contd.*

The Finest Used Example Recorded of This Iconic Error



253

x253 ○

“3-PENCE” on 4d. deep ultramarine with **surcharge omitted**, superb colour, neatly cancelled by part Adelaide datestamp, fine. By far the finest example recorded of this iconic error. S.G. 68c. Photo

£20,000-25,000

Note: This is one of the most famous errors of the Australian Colonies and was first reported in the “Philatelic Record” in October 1879 and listed by Stanley Gibbons in 1892. Of the eleven used examples recorded, four reside in institution collections.

PROVENANCE:

Rev. James Mursell, October 1964

Harry Napier, May 1976

Midas, September 1982



254

x254 ☒

6d. Prussian blue **imperforate between stamp and margin at left**, with another 6d. on 1874 (21 May) envelope from Adelaide to England, fine. S.G. 73. Photo

£100-150



255

x255 ○

6d. Prussian blue perf 11½ horizontal pair **imperforate vertically**, cancelled by dumb obliterator, design just cut-into at left, ironed-out horizontal crease and two small tones on reverse. A major rarity and the finer of the two examples recorded. S.G. 73a, £2250. Photo

£1,500-2,000

PROVENANCE:

H.H. Frenkle, September 1979

x256 ○

9d. bright mauve **printed both sides**, neatly cancelled, the odd shortish perf, fine. S.G. 76a, £900. Photo

£400-500

PROVENANCE:

Peter Jaffé, March 2006

x257 ○

10d. in blue on 9d. yellow with **watermark error "Crown/SA"**, lightly cancelled by Adelaide c.d.s. (11.11.68), centred to top but one of the finest examples known. B.P.A. Certificate (1977). S.G. 78a, £1700. Photo

£500-600

PROVENANCE:

B. Lye, January 1983



256



257

South Australia, 1868-79 Watermark Large Star, Perf. 11½-12½ - *contd.*



258

x258 ○ 2/- carmine **printed both sides**, the second impression inverted, fine used and very scarce. S.G. 87a, £750. Photo £500-600

PROVENANCE:
H.H. Frenkle, September 1979
Peter Jaffé, March 2006



259



260

x259 ★ 1870-71 perf 10 “3-PENCE” on 4d. ultramarine **imperforate between stamp and margin at left**, a fine mint example of this error, being the only unused example recorded. S.G. 93. Photo £200-300

x260 ○ 1870-71 perf 10 6d. bright blue **printed double**, a used example showing two complete double prints which is especially evident in the frame at right and the Queen’s profile, fine. Rare, one of two examples recorded. B.P.A. Certificate (1955). S.G. 96. Photo £400-500



261



262

x261 ○ 1870-71 perf 10 6d. bright blue **printed double**, perforations at right inside design and straight-edge at top; a few shortish perfs at lower left, fine used. Rare, one of two examples recorded. S.G. 96. Photo £300-400

x262 ○ 1870-73 perf 10x11½-12½, 11½-12½x10, or compound, 6d. Prussian blue **double impression**, an extraordinary example with ink washed across the whole stamp, fine used. The only example recorded. S.G. 105. Photo £100-150



263



264

- x263 ★ 1870-73 perf 10x11½-12½, 11½-12½x10, or compound, 6d. bright Prussian blue **imperforate between stamp and margin at left**, unused without gum; pressed vertical crease at left, otherwise fine. Two examples recorded in unused condition. S.G. 106, £350+. Photo £100-150
- x264 ★ 1870-73 perf 10x11½-12½, 11½-12½x10, or compound, 10d. on 9d. yellow **imperforate between stamp and margin at left**, a “large” example showing portion of adjoining stamp above, unused with some gum; straight-edge at right and pressed vertical crease at left not affecting fine appearance. Rare, the only example recorded. S.G. 107. Photo £300-400
- x265 ○ 1871 watermark V over Crown, perf 10 4d. dull lilac (2), one **imperforate between stamp and margin at left** centrally cancelled “33” (Riverton), the other with **watermark reversed** cancelled by light Adelaide c.d.s.; the latter with horizontal crease otherwise fine. Only four of the former recorded. B.P.A. Certificates (2000 and 1992) respectively. S.G. 111 £100-150



266

- x266 ○ 1871 watermark V over Crown, perf 10 4d. dull lilac **printed both sides**, cancelled by Adelaide datestamp; straight-edge at left and a short perf at top otherwise fine. Three used examples recorded, all with the similar centring, with another example in the Royal Collection. Arguably the most sought after printed both sides from the Perkins Bacon issues. RPSV Certificate (2005). S.G. 111a, £4500. Photo £2,000-2,500

Note: This error was first reported in the “Philatelic Journal” in June 1900 and listed in the 1903 Stanley Gibbons catalogue.

PROVENANCE:
William Frazer, September 2003

1876-1900 WATERMARK BROAD STAR

- x267 A selection of errors including **double impression** on perf 11½-12½ 6d. Prussian blue used with Sideface 2d. on 1877 (Jan.) envelope from Adelaide to Edinburgh, 9d. rose-lilac (large holes, 9d. red-purple, perf 10 6d. Prussian blue and perf 10x11½-12½ 4d. dull purple and 6d. bright blue; and **double perforations** on perf 11½-12½ 9d. rose-lilac mint marginal pair, 9d. red-purple mint pair (one with defective corner) and used single, 1/- red-brown used, 1/- dull brown used, 1/- chocolate mint and 1/- sepia mint pairs (2), perf 10 6d. Prussian blue used and perf 10x11½-12½ 6d. Prussian blue used pair, 6d. bright blue used pair, 6d. bright ultramarine used and 2/- top left corner mint pair. A very good lot that is difficult to duplicate. (20 items) £200-250

South Australia, 1876-1900 Watermark Broad Star - *contd.*



268



269



270

Perf. 11½-12½

- x268 ○ “3-PENCE” on 4d. ultramarine with widely spaced **surchARGE double**, clearly cancelled, fine used. Although about twenty examples are known, many are faulty, and this is one of the finest. One of the most popular errors of South Australia. R.P.S. Certificate (1966). S.G. 112a, £1900. Photo £1,000-1,500
- PROVENANCE:
Peter Jaffé, March 2006
- x269 ○ “3-PENCE” on 4d. ultramarine with closely spaced **surchARGE double**, indistinctly cancelled; some shortish perfs at right, small corner crease and a touch soiled otherwise fine. A rare variant of which only three examples are recorded. RPSV Certificate (2013). S.G. 112a, £1900. Photo £1,000-1,500
- Note: This error was first reported in the “London Philatelist” in February 1894 and listed by Stanley Gibbons in 1903. It occurs in two variations, the second, with the surcharges almost on top of each other, is much rarer.*
- x270 ○ 6d. Prussian blue **printed double**, centred to left and showing portion of the adjoining stamp at right, lightly cancelled, fine. Also, for comparison, another example showing the more common error of double impression S.G. 117. Photo £300-400
- Note: The whole design is doubly printed, which is illustrated in the design at right and more particularly, the Queen’s profile.*



271



272

- x271 ○ “8 PENCE” on 9d. burnt umber with **surchARGE double**, fine used. RPSV Certificate (2005). S.G. 119a, unpriced. The only example recorded. Photo £1,500-2,000
- Note: This error was discovered in 2008 which led to its listing by Stanley Gibbons in 2010.*
- x272 ○ “8 PENCE” on 9d. brown, a “small” example **misperforated** resulting in the surcharge being completely omitted, fine used. A very unusual and dramatic error, being the only example recorded. S.G. 120. Photo £150-200



273

x273 ★

“8 PENCE” on 9d. brown vertical pair **imperforate between**, unused with part original gum; some minor toning on the reverse of some perfs at top, otherwise fine. The only example recorded. RPSV Certificate (2001). S.G. 120a, £5000. Photo

£4,000-5,000

Note: The “London Philatelist” in June 1916 published the first report of this error and it was listed by Stanley Gibbons the following year. It is interesting to note that this is the only major error not to feature in any of the great collections of South Australia.



274

x274 ○

“8 PENCE” on 9d. grey-brown with **surcharge double**, fine used. Rare, three examples recorded. RPSV Certificate (2008). S.G. 121a, £2750. Photo

£1,500-2,000

Note: This error was first reported in the philatelic press by the “London Philatelist” in February 1923 after being listed by Stanley Gibbons in 1917.

PROVENANCE:

Harry Napier, May 1976

H.H. Frenkle, September 1979

Peter Jaffé, March 2006

South Australia, 1876-1900 Watermark Broad Star, Perf. 11½-12½ - *contd.*



275

- x275 ○ 9d. rose-lilac **printed both sides**, the second impression inverted, lightly cancelled, fine. Two examples recorded and grossly under-catalogued at £600. RPSV Certificate (2013). S.G. 123a. Photo

£1,000-1,500



276

- x276 ○ 9d. rose-lilac **printed both sides**, the second impression printed sideways, fine used. Three examples recorded and grossly under-catalogued at £600. RPSV Certificate (2013). S.G. 123a. Photo

£1,000-1,500

Note: This error was first reported in the "London Philatelist" in July 1893, however, it was not listed in the Stanley Gibbons catalogue as a generic printed both sides until 1923. The second impression on the reverse of both of these stamps is much lighter than its Large Star watermark counterpart of S.G. 122a. No distinction between the inverted error and the sideways error was made until quite recently. They are both amongst the great errors of South Australia. The last time an example was publically auctioned of either variety was over sixty years ago in the Beresford sale in 1958.



277



278

- x277 ★ 9d. rose-lilac (large holes) **double impression**, unused with large part original gum, fine. Scarce. S.G. 124. Photo

£100-150

- x278 ★ 1/- reddish lake-brown **printed double**, unused with part original gum; small tear at lower left. The only example recorded. S.G. 126. Photo

£100-150

Note: This error is completely different to the more common double impressions. It is clearly visible in the right hand frame and particularly evident on the image of the Queen's profile.

- x279 ○ 1/- reddish lake-brown block of eight (4x2) with **double impression** across all stamps, indistinctly cancelled, fine. A very scarce multiple. S.G. 126

£100-150



280

x280 ★

1/- chocolate horizontal strip of four **imperforate vertically** (except at left) and **imperforate between stamp and margin at right**, fine mint. S.G. 130a, £900+. Photo

£500-600

Note: This error was first recorded in the "Stanley Gibbons Monthly Journal" in December 1897 and listed by Stanley Gibbons in 1950. Strips of four illustrate the full extent of the error with the last four vertical columns of the left pane imperforate.



281

x281 ★

1/- chocolate horizontal strip of four **imperforate vertically** (except at left) and **imperforate between stamp and margin at right**, fine mint. S.G. 130a, £900+. Photo

£500-600

Perf. 10



282

x282 ★

6d. bright blue **double impression**, fine unused with large part original gum. Scarce. RPSV Certificate (2009). S.G. 136. Photo

£100-150



283

x283 ○

6d. Prussian blue with **mixed perforations 10 and 11½** at right, lightly cancelled; a little soiled and with thin at top, otherwise fine. The only example recorded and unlisted by Stanley Gibbons. RPSV Certificate (2017). Photo

£200-250

Note: Although half a dozen examples of this mixed perforation 10 and 11½ discovered in 2007 are recorded overprinted "O.S.", this is the only example known of the Postage 6d. value.

South Australia, 1876-1900 Watermark Broad Star, Perf. 10 - *contd.*



284

x284 ★田

6d. bright ultramarine block of four showing **mixed perforations 10 and 11½ across centre**, fine mint. Unlisted in Stanley Gibbons. RPSV Certificate (2017). S.G. 141. Photo

£750-1,000

Note: There is no reference to this error in contemporary philatelic literature until the auction of this block in the Griffiths collection in 1992. To date, three vertical pairs and two blocks of four have been recorded, all emanating from the same sheet.

PROVENANCE:
John Griffiths, June 1992



285

x285 ○

2/- rose-carmine horizontal pair **imperforate between**, fine used. S.G. 145a, £3000. Photo

£2,500-3,000

Note: The "Philatelic Record" in May 1891 published the first article on this error which was catalogued by Stanley Gibbons in 1923. Four examples are recorded, although one from the Hall sale in 1943 has not been seen since. There is another example in the Royal Collection.

PROVENANCE:
Rev. James Mursell, October 1964

1901-02 WATERMARK CROWN OVER SA

x286 ★ ㊦ 9d. claret block of six (3x2) with **watermark reversed**, fine mint. BW S15a, \$720; S.G. 146 £100-150



288

287

289

x287 ★ 1/- dark reddish brown **imperforate between stamp and margin at foot** and imperforate at top, unused with large part original gum; light horizontal crease not affecting appearance. The only single example of this error known. S.G. 148. Photo £200-250

Note: This is not listed as a separate error by Brusden White, however, almost certainly from the original find published in 1936.

x288 ★ 1/- dark reddish brown vertical strip of three with margin at foot, **imperforate horizontally**, fine mint. Seven strips are recorded. BW S16bb; S.G. 148a, £3000+. Photo £2,500-3,000

Note: The error was first reported in "Australian Stamp Monthly" in October 1936 and listed by Stanley Gibbons in 1950. Of the seven strips of three recorded, only two, including this strip, are in fine condition. All examples show the perfs trimmed on the top stamp.

PROVENANCE:
A.E. Fryar, June 1955

x289 ○ 1/- dark reddish brown a rejoined vertical strip of four **imperforate horizontally** except at top, each used on different dates between July and September 1902; each roughly torn apart. A remarkable piece despite the faults. The only used examples of this error recorded, which shows the difficulty the general public encountered when attempting to commercially use errors produced by the government printer. BW S16bb with this strip mentioned on Page 1/124; S.G. 148a. Photo £750-1,000

PROVENANCE:
William Frazer, September 2003

South Australia, 1901-02 Watermark Crown over SA - *contd.*



290

- x290 ★ 1/- reddish brown **imperforate between stamp and margin at top**, unused with large part original gum, fine. Two examples recorded. Photo £200-250
- Note: Not listed by Brusden White and a totally different error, unrelated to the SG 148a examples since it has horizontal perforations at foot.*
- x291 ★ 2/- carmine block of nine with **watermark reversed**, fresh and fine mint. Not listed by Brusden White and the only examples recorded. S.G. 151, £405+ £200-250

THE DE LA RUE PRINTINGS



292



293

- x292 ○ 1868-76 watermark Crown over SA, rouletted 2d. pale orange-red **printed both sides**, fine used. The only example recorded and under-catalogued at £750. S.G. 153a. Photo £500-750
- Note: This error was first reported in the "London Philatelist" in April 1904. Two other examples exist overprinted "P." for usage as a Police Departmental stamp.*
- PROVENANCE:
A.E. Fryar, June 1955
William Frazer, September 2003
- x293 ○ 1868-76 watermark Crown over SA, rouletted 2d. pale orange-red horizontal pair **imperforate between**, roulettes on two sides, cancelled by Meadows c.d.s. (19.9.68), fine. Rare, four pairs recorded of which two are damaged. There is another pair in the Royal Collection. R.P.S. Certificate (1994). S.G. 153b, £1600. Photo £800-1,000
- PROVENANCE:
Rev. James Mursell, October 1964
Michael Blake, June 2016



294

- x294 ○ 1868-76 watermark Crown over SA, rouletted 2d. pale orange-red vertical pair with margin at foot, **imperforate horizontally**, roulettes or traces thereof on both sides, cancelled “108” (Callington), corner crease in margin otherwise fine. The only example recorded in private hands. S.G. 153c, £3000. Photo £2,500-3,000

Note: This error was first published in the “The Stanley Gibbons Monthly Journal” in February 1907, almost certainly referencing the vertical strip of three in the Tapling Collection. This example was first auctioned in 2003 and catalogued by Stanley Gibbons the following year.

PROVENANCE:
Chartwell, May 2018

- x295 1876-1904 selection of **double perforations** on 1876-1904 perf 10 1d. strip of four and single and 2d. pair, all mint, perf 13 1d. mint marginal strip of three, used pair and 2d. mint single, 1883-99 perf 15 ½d. block of four, perf 13 block of four and vertical strip of four, all mint, and perf 15 4d. used, 1891 (Jan.) 2½d. on 4d. perf 10 mint and used and perf 15 (lightly stained) used, and 1895 perf 13 2½d. used; condition mainly fine £150-200

1876-1904 WATERMARK CROWN OVER SA (CLOSE)

Perf. 10



296

- x296 ○ 1d. deep green **printed double**, fine and lightly cancelled. Only two examples recorded. RPSV Certificate (2010). S.G. 167bb, £400. Photo £400-500

Note: The doubling is clearly evident on the right hand side showing a complete additional impression. This error was first recorded in the “London Philatelist” in July 1932, and listed in the 1994 Stanley Gibbons catalogue.

South Australia, 1876-1904 Watermark Crown over SA (Close) - *contd.*

Perf. 10x11½-12½



297

x297 ○

1d. blue-green horizontal pair **imperforate between**, lightly cancelled; pressed crease otherwise fine. The only example recorded and unlisted by Stanley Gibbons. R.P.S. Certificate (1965). S.G. 169a. Photo

£1,500-2,000

Note: The "Australian Stamp Monthly" published the first report of this error in June 1947. The Stanley Gibbons catalogue list an imperforate between pair at SG 161a, which is almost certainly this pair. The watermark differences between Type 10 and 13 have confused the listing. No examples of SG 161a can be traced in the census.

PROVENANCE:

Rev. James Mursell, October 1964
Michael Blake, June 2016

Perf. 15



298

x298 ★

2d. orange-red vertical pair **imperforate between**, unused with part to large part original gum, the lower stamp with some perforation irregularities otherwise fine. The only recorded example and under-catalogued at £950. S.G. 174b. Photo

£1,500-2,000

Note: Although catalogued by Stanley Gibbons in 1917, there are no reports of this error in contemporary literature until it was auctioned by Harmers in 1947.

Perf. 13



299

x299 ★

Id. green vertical pair with margin at foot showing **centre and bottom perforations grossly misplaced upwards**, fine mint. Rare, only this pair and a block of four in private hands are recorded. S.G. 175. Photo

£250-300

Note: This error has not been recorded in contemporary literature although it was known to collectors in the 1920s with pairs in both the Royal and Vickery Collections.



300

x300 ★

Id. green vertical pair **imperforate between**, the lower stamp with crease at right otherwise fine. Rare, only this pair and two examples in a block of four recorded. The block has not been on the market since 1971. S.G. 175b, £1800. Photo

£1,500-2,000

PROVENANCE:

Rev. James Mursell, October 1964

1883-99 WATERMARK CROWN OVER SA (CLOSE)

Perf. 10



301

x301 ○

½d. chocolate horizontal pair **imperforate between**, cancelled by part duplex, some perf irregularities at sides. Rare, the only example recorded. S.G. 182a, £1500. Photo

£1,200-1,500

Note: This error was first reported in the "Australian Stamp Monthly" in October 1936 and listed by Stanley Gibbons in 1950. No mint examples are known.

PROVENANCE:

William Frazer, September 2003

Perf. 10x11½-12½



302

x302 ★

½d. red-brown horizontal pair **imperforate between**, some short perfs at left, fine mint. Rare, only three examples recorded. S.G. 186a, £1000. Photo

£1,000-1,200

Note: This error was first reported in the "London Philatelist" in August 1932 and listed by Stanley Gibbons in 1933.

PROVENANCE:

Rev. James Mursell, October 1964

Perf. 15



303

x303 ★

½d. deep brown horizontal strip of four with margin at top, the centre pair **imperforate between**, fine mint. Photo

£1,000-1,200

Note: There is no evidence of this error being reported in contemporary literature and it was listed by Stanley Gibbons in 1917. Three strips of four are recorded, with another in the Royal Collection. The whereabouts of two pairs in a mint block of eight in the Rosenblum (1928) and Sharples (1936) collections is unknown and hasn't been sighted since that time, most probably broken down into two strips of four and recorded above.

Perf. 13



304

- x304 ★ ½d. pale brown horizontal pair **imperforate between**, fine mint. Rare, only one other is recorded. RPSV Certificate (2011). S.G. 191a, unpriced. Photo £1,000-1,200

- x305 ○ 1886 “POSTAGE & REVENUE” perf 11½-12½ £3 sage-green showing **double perforations at foot**, fine cancelled-to-order. The only example recorded in the high value Postage & Revenue series of South Australia. S.G. 202a £300-400



306

- x306 ○ 1891 (Jan.) perf 10 2½d. on 4d. pale green vertical pair **imperforate between**, lightly cancelled; straight-edge at right and light corner crease. The only example recorded and one of the great imperforate errors of the period. S.G. 229bb, £3750. Photo £3,000-4,000

Note: This error was first reported in the “Australian Stamp Monthly” in October 1936, noted by James in “The Stamps of South Australia” in 1947 and listed by Stanley Gibbons in 1950.

PROVENANCE:
A.E. Fryar, June 1955
William Frazer, September 2003

South Australia - *contd.*



307



308

- x307 ○ 1891 (Jan.) perf 10x11½-12½, 2½d. on 4d. pale green showing **mixed perfs** at right, fine used. Rare, unlisted by Stanley Gibbons and the only example recorded. RPSV Certificate (2016). S.G. 231. Photo £300-400

Note: This stamp is perforate 10 all round with an additional vertical line of perforations gauging 12½ at right producing the mixed perforations error.

- x308 ★田 1891 (Jan.) perf 15 2½d. on 4d. green block of four showing **double perforations**, fine mint. An eye-catching piece. S.G. 233. Photo £100-200



309

- x309 ★田 1894-1906 perf 12x11½ 2½d. indigo lower left corner plate number block of twelve (3x4) showing dramatic misperforation due to paper fold resulting in three stamps imperforate between stamp and margin. A stunning piece with only one similar block from the Federal period recorded. S.G. 239. Photo £750-1,000

1902-04 THIN "POSTAGE"



310

Perf. 11½-12½

x310 ○ 3d. olive-green with **watermark sideways**, cancelled by Kadina squared-circle d.s. (1.10.04), fine. Rare. BW S18a, \$3000; S.G. 268a, £1700. Photo

Note: This error was first reported by the "Australian Philatelist" in August 1906 and listed in the Stanley Gibbons catalogue in 2003. Although the Brusden White catalogue states that around a dozen examples are estimated to exist, auction records can only conclusively track five singles and a pair, all used at Kadina between September and November 1904.

£750-1,000



311

Perf. 12

x311 ⊙ 3d. olive-green marginal vertical pair with plate number **imperforate between stamps and margin at right**, fresh and fine unmounted mint. Rare. BW S19b, \$3500+; S.G. 280. Photo

Note: This error was first recorded in the Fryar sale in 1955 and listed in Brusden White in 2004. Two sheets comprising twelve examples were discovered, with a strip of three being the largest multiple.

£1,200-1,500

PROVENANCE:

A.E. Fryar, June 1955

x312 ⊕ 3d. olive-green block of four with margin at foot, showing "POSTAGE" **omitted and misplaced, value below "AUSTRALIA"**, superb unmounted mint. One of the great errors of South Australia. BW S19b, \$3500+; S.G. 280a, £9000+ for the lower pair. Photo

Note: The discovery of a sheet with the error "POSTAGE" omitted was announced in the "Australian Stamp Journal" in September 1931 and was listed by Stanley Gibbons in 1950. This error affected the lower row, with the other 50 units showing misplacement of the "POSTAGE" and duty tablets. Only 10 examples exist, made up of four pieces, two blocks of four and two blocks of fifteen.

£4,000-5,000

PROVENANCE:

A.E. Fryar, June 1955
Peter Jaffé, March 2006



312

South Australia, 1902-04 Thin "POSTAGE", Perf. 12 - *contd.*

- x313 ★ 4d. orange with watermark inverted plus a vertical pair with perforations double between, fine mint. Very scarce £100-150
- x314 ★ 田 4d. orange block of twelve (2x6) being the last two rows of the sheet with watermark "SUOTH" instead of "SOUTH" in the margin at right; a few split perms, fine mint. Rare with five examples recorded, this being the second largest piece. BW S20a, \$750+ £150-200

Perf. 11½-12½



315



316

- x315 ⊙ 8d. ultramarine top right corner vertical pair with plate number, showing watermark "SUOTH" in margin at right, mounted in the selvedge only. Rare, only four examples recorded including one in the Royal Collection. BW S26a, \$750; S.G. 272. Photo £200-250
- x316 ★ 田 8d. ultramarine top right corner plate number block of four, the lower left stamp showing error "EIGNT", light diagonal gum bend, not affecting the error, fine mint. Ceremuga Certificate (2002). BW S26c; S.G. 272a, £2500+. Photo £1,200-1,500



317

- x317 ○ 8d. ultramarine showing error "EIGNT", very lightly cancelled, fine. Rare, only twelve used examples recorded of this popular error. S.G. 272a, £3000. Photo £1,200-1,500

x318 ☒

A postcard from the German stamp dealer Otto Bickel to the London stamp dealers Bright & Son, dated 13 December 1904 advertising for sale a used example of the 8d. "EIGHT" error for £10. News of the error had reached Europe within nine months of the issue of the stamp and this is a very early and rare postcard advertising a stamp error of the Australian Colonies

£100-200



319

x319 ★

9d. rosy lake vertical pair **imperforate between and between stamp and margin at foot**, very fine mint. S.G. 273a, £2750. Photo

£1,200-1,500

Note: This error was first recorded in the "Australian Philatelist" in January 1906 and listed in the Stanley Gibbons catalogue in 1917. Eight examples are recorded, including a pair in the Vickery Collection in the New South Wales Powerhouse Museum.

PROVENANCE:

Rev. James Mursell, October 1964
H.H. Frenkle, September 1979
Sir Gawaine Baillie, July 2005



320

x320 ○

1/- brown punctured "SA" with **misplaced "POSTAGE" and "ONE SHILLING"**, cancelled by part Adelaide registration branch squared-circle d.s. and with red crayon through value tablet consistent with registration, fine. BW S30c, \$3,000. S.G. 275. Photo

£150-200

Note: All examples of this error are used and perforated "S.A." for official use.

South Australia, 1902-04 Thin "POSTAGE", Perf. 11½-12½ - *contd.*



321

x321 ★田

1/- brown marginal block of four imperforate between vertically and between stamps and margin at foot, one with tone spot on reverse otherwise fine mint. The only block in private hands. S.G. 275b, £5500+. Photo

£2,500-3,000

Note: This error was first recorded in the "Australian Philatelist" and listed by Stanley Gibbons in 1917. Nine pairs and this block are recorded. Another block is in the Royal Collection.

PROVENANCE:

J.R.W. Purves, June 1981

1904-11 THICK "POSTAGE"

Perf. 12



322

x322 ★

6d. blue-green imperforate between stamp and margin at top; small crease at lower right and roughly separated at top, otherwise fine mint. The only example recorded. S.G. 284. Photo

£300-400



323



324



325



326

- x323 ○ 6d. blue-green, perf 12, **imperforate between stamp and margin at foot**, cancelled by Murray Bridge squared-circle d.s., fine. BW S42b, \$2000 for mint (only a pair known), unpriced used; S.G. 284. Photo £300-400
- x324 ★ 9d. brown-lake, perf 12½, **imperforate between stamp and margin at top**, fresh and fine mint. BW S50b, unpriced mint, \$3,000 used; S.G. 286b. Photo £500-750
- x325 ★ 10d. dull yellow, perf 12, **imperforate between stamp and margin at left**, fine mint. Rare, five examples recorded. BW S53bc, \$2,000; S.G. 287. Photo £400-500
- x326 ★ 10d. dull yellow, perf 12, **imperforate between stamp and margin at right**, two tiny black specks on reverse, otherwise fine mint. Three examples recorded. Unlisted by Brusden White; S.G. 287. Photo £400-500



327

- x327 ★ 10d. dull yellow, perf 12, a vertical interpanneau pair, the lower stamp **imperforate between stamp and margin**, fine mint. Rare, two examples recorded, the other being a single. BW53b, \$1,500. S.G. 287. Photo £400-500

PROVENANCE:
John Williams, March 2010

South Australia, 1904-11 Thick "POSTAGE", Perf. 12 - *contd.*



328



329



330



331

- x328 ★ 10d. dull yellow, perf 12, a horizontal pair **imperforate between**, fresh and fine mint. BW S53b; S.G. 287a, £3250. Photo £2,000-2,500
- Note: Three pairs imperforate between were purchased by the Sydney dealer Fred Hagen and reported in the "Australian Philatelist" in October 1908. It was listed by Stanley Gibbons in 1925. Eight pairs and a block of four are recorded, although unusually, this error is rarely offered at auction.*
- x329 ★ 1/- brown, perf 12, a vertical pair **imperforate between**, fine mint. Eight pairs in private hands have been traced, one is damaged, and most exhibit slight imperfections. BW S54b; S.G. 288a, £2750. Photo £1,500-1,800
- Note: Although this error was listed by Stanley Gibbons in 1917, it was not reported until September 1918 in the "London Philatelist".*
- x330 ★ 1/- brown, perf 12, a vertical pair **imperforate between and between stamp and margin at foot**, fresh and fine mint. Three vertical pairs and a block of four, not seen since 1982, are recorded. BW S54bb; S.G. 288a. Photo £1,500-2,000
- x331 ★ 1/- brown, perf 12, a horizontal pair **imperforate between**, fresh and fine mint. Rare, three pairs recorded with another in the Royal Collection. BW S54b; S.G. 288b, £3250. Photo £2,500-3,000
- Note: This error was first reported in the "Stanley Gibbons Monthly Journal" in January 1905 and listed by Stanley Gibbons in 1950.*

PROVENANCE:
E.R. Slade Slade, 1979

- x332 ★ 1905-12 1d. scarlet marginal block of nine (two small stains on reverse) showing **double perforations** horizontally and vertically, and 2d. mauve marginal block of four showing **double perforations** horizontally between and at top, fine mint. Both unlisted by Brusden White. S.G. 294a, 295a £150-200



333

x333 ★田

1905-12 2d. violet block of four, **the lower pair imperforate on three sides**, fine mint. Rare, two blocks of four and a faulty block of eight are the only examples recorded. One of the great rarities of the Federal period of South Australia. R.P.S. Certificate (1982). BW SS9b; S.G. 295aa, £3000. Photo

£2,000-2,500

Note: This error was first reported in the "Australian Stamp Journal" in August 1923 and listed by Stanley Gibbons in 1950.

PROVENANCE:

Sir Gawaine Baillie, July 2005

1906-12 THICK "POSTAGE"

Perf 12 or 12½

x334 ★田

3d. sage-green lower right corner block of four showing "AUSTRALIA" in watermark, fine mint. BW S35a, \$500; S.G. 298

£100-150



335

x335 ○

3d. sage-green horizontal pair **imperforate between stamps and margin at foot**, centrally cancelled with Adelaide double-ring d.s., fine. Unlisted in Brusden White; S.G. 298. Photo

£400-500

Note: This error first came to the attention with the sale of two rejoined pairs in the Frazer collection. They are the only two pieces recorded.

PROVENANCE:

William Frazer, September 2003

South Australia, 1906-12 Thick "POSTAGE", Perf. 12 or 12½ - *contd.*

x336 ★田

4d. orange-red lower right corner block of four with "AUSTRALIA" in watermark, fine mint. BW S39a, \$750; S.G. 299

£150-200



337



338

x337 ★

6d. blue-green imperforate between stamp and margin at foot, part original gum; hinge remnants and tiny thin at top otherwise fine. Four mint singles (two with faults), four pairs (two defective) and a strip of four recorded. BW S43b, \$1,000; S.G. 300. Photo

£300-400

x338 ○

6d. blue-green imperforate between stamp and margin at foot, clearly cancelled; some short perfs and roughly separated at foot. The only used example recorded. BW S43b, unpriced; S.G. 300. Photo

£150-200



339

x339 ★田

6d. blue-green block of four imperforate between horizontally, fresh and fine mint. Ten pairs, including one in the Royal Collection, and this block are recorded. BW S44b; S.G. 300ab, £5000. Photo

£2,500-3,000

Note: This error was first reported in the "London Philatelist" in September 1918 and listed by Stanley Gibbons in 1940.

PROVENANCE:

- A. Hind, July 1934
- Rev. James Mursell, October 1964
- E.R. Slade Slade, 1979
- Sir Gawaine Baillie, July 2005
- John Williams, March 2010



340



341

x340 ★田 9d. brown-lake punctured “SA”, a lower right corner block of four with “AUSTRALAI~~A~~A” **in watermark**, fine mint. Unlisted by Brusden White and the only example recorded. S.G. 302. Photo £150-200

x341 ★ 9d. brown-lake horizontal strip of three with margin at left, **imperforate vertically** except at right, large part original gum; light vertical bend at right. One of the great rarities of the South Australia Long Stamps and the finest example of this error known. Two strips of three (the other badly toned) and a badly creased block of six recorded. BW S52bb; S.G. 302aa, £5000. Photo £3,000-4,000

PROVENANCE:
J.R.W. Purves, June 1981
William Frazer, September 2003

x342 ★ 9d. brown-lake vertical pair **imperforate between**, fine mounted mint. Seven pairs and four blocks are recorded. BW S52ba; S.G. 302a, £2250. Photo £1,200-1,500

Note: This error was first recorded in the “Australian Philatelist” in July 1907 and listed by Stanley Gibbons in 1925.

PROVENANCE:
William Frazer, September 2003

x343 ★ 9d. brown-lake vertical pair **imperforate between and between stamp and margin at foot**, fine mint. Eight pairs and a block of four recorded. BW S52b; S.G. 302a, £2250. Photo £1,200-1,500

PROVENANCE:
John Williams, March 2010



342



343

South Australia, 1906-12 Thick "POSTAGE", Perf. 12 or 12½ - *contd.*



344

x344 ☉

1/- brown horizontal pair with interpanneau margin at top, imperforate between, superb unmounted mint. BW S55b; S.G. 303a, £3750. Photo

£2,000-2,500

Note: This error was first recorded in the "London Philatelist" in September 1918 and listed by Stanley Gibbons in 1925. At least two sheets were issued with this error. Eight pairs are recorded with one in the Royal Collection.

PROVENANCE:

Hamilton, October 1980

DEPARTMENTAL AND OFFICIAL STAMPS



345



346



x345 ○

In black on perf 11½-12½ 2/- pale pink, no stop after "O", fine used. RPSV Certificate (2007). Photo

£200-250

Note: Originally this stamp was overprinted "C" with the "O" inserted by hand. Consequently, there was no stop after the "O". Unlisted by Butler, however at least seven examples have been recorded.

PROVENANCE:

Harry Lower

C.S. (Chief Secretary)

x346 ○

In black on perf 11½-12½ x roulette 6d. Prussian blue, printed both sides, fine used. Five examples have been recorded. Photo

£1,500-2,000

Note: Although there were some catalogue listings of the Departmentals in the late 1890s, none of the errors were listed. The first reference to this error is the sale by auction of an example in the Crocker collection in 1938.



347

x347 ○ In black on V over Crown 4d.dull violet, **printed both sides**, fine used. Three examples are recorded. RPSV Certificate (2006). Photo £1,500-2,000

Note: Although recorded by Col. Napier in the 1920s, the first publication was in the "Stamps of South Australia" by James in 1949.

PROVENANCE:
Harry Napier



348



349



350

G.P. (Government Printer)

x348 ○ In black on perf 11½-12½ 1d. dark green, **printed both sides**, cancelled by Adelaide c.d.s., straight-edge at right and a trace of perfs at left, fine. Three examples are recorded of which this is probably the finest. RPSV Certificate (2019). Photo £1,500-2,000

Note: Although recorded by Colonel Napier in the 1920s, the first publication of this error was in the "Stamps of South Australia" by James in 1949.

PROVENANCE:
Rev. James Mursell, October 1964

x349 ○ In black on perf 11½-12½x10 2/- carmine, **imperforate between stamp and margin at left**, cancelled by dumb obliterator; small tear at top not affecting appearance. Photo £100-120

G.T. (Goolwa Tramway)

x350 ★ In red on rouletted 2d. vermilion, **no stop after "T"**, unused with part original gum, roulettes or traces thereof on three sides, small fault at lower left corner otherwise fine. Two unused examples recorded. Ceremuga Certificate (2018). Photo £800-1,000



The Royal Philatelic Society London

We are pleased to receive proposals for membership of the Society which is through election.

If you are interested in membership, please contact us at secretary@rpsl.org.uk

If you have no proposer or seconder, please contact us for further information.

Tel: 00 44 (0)20 7486 1044 | www.rpsl.org.uk

The world's oldest and most prestigious philatelic society, established 1869, with over 2,000 members in more than 70 countries.

Extensive premises in London's West End house the Society's superlative library, plus Museum and Archive, and provide first-class meeting facilities.

The Society's Online Catalogue provides access to over three-quarters of a million philatelic indexes to members world-wide.

A fascinating programme of displays and meetings throughout the year, supplemented by regional meetings and gatherings at major international events.

The Society publishes ten times a year its own journal, *The London Philatelist*, containing articles of outstanding philatelic research, in addition to publishing major philatelic works.

We are honoured to have Her Majesty Queen Elizabeth II as our Royal Patron

South Australia, Departmental and Official Stamps - *contd.*



351



352

L.C. (Legislative Council)

- x351 ○ In red on rouletted 2d. vermilion, **no stop after "C"**, centrally cancelled by Adelaide c.d.s., roulettes at left only, fine. Photo £200-250
- x352 ★ In red on rouletted 6d. dull ultramarine, **no stop after "C"**, unused with part original gum, roulettes or traces thereof on two sides, fine. Two examples recorded. Photo £800-1,000
- PROVENANCE:
 E.B. Lye, January 1963
 Harry Napier, September 1978
 Hamilton, October 1980
 Lord Vestey, January 2013



353



354

L.L. (Legislative Librarian)

- x353 ★ In red on rouletted 2d. vermilion, **no stop after first "L"**, unused with part original gum, traces of roulette at foot, fine. Three unused examples recorded. Photo £1,500-2,000
- Note: Although recorded by Colonel Napier in the 1920s, the first publication of this error was in the "Stamps of South Australia" by James in 1949.*
- x354 ○ In red on rouletted 6d. dull ultramarine, **no stop after first "L"**, lightly cancelled, roulettes at right only, fine. Photo £200-250
- Note: Although recorded by Colonel Napier in the 1920s, the first publication of this error was in the "Stamps of South Australia" by James in 1949.*



355



356

L.T. (Land Titles)

- x355 ○ In red on rouletted 2d. vermilion, **no stop after "T"**, clearly cancelled by Adelaide c.d.s., roulettes or traces thereof on three sides, fine. Photo £200-250
- x356 ○ In red on rouletted 6d. dull ultramarine, **no stop after "T"**, lightly cancelled, roulettes or traces thereof on all sides, fine. Photo £150-200



357



358



359



P. (Police)

- x357 ○ In blue on rouletted 2d. orange-red, a horizontal pair **imperforate between**, lightly cancelled, roulettes on all sides, fine. Four examples can be definitely traced. Photo

Note: This error was first reported in the sale of the Crocker collection in 1938 and referenced in the "Philatelic Journal of Great Britain" in October 1942 as part of the Murray collection.

£1,000-1,500
- x358 ○ In blue on rouletted 2d. orange-red, a horizontal pair **imperforate between**, lightly cancelled, roulettes two sides, fine. Four examples can be definitely traced. Photo

£1,000-1,500
- x359 ○ In blue on rouletted 2d. orange-red, **printed both sides**, cancelled by part Adelaide c.d.s., roulettes on two sides, fine. Four examples recorded with another in the Royal Collection. RPSV Certificate (2004). Photo

Note: This error was first reported in the "Australian Philatelist" in March 1904.

£750-1,000



360



361



362

- x360 ○ In black on rouletted 2d. orange-red pair, **imperforate between**, clearly cancelled by Adelaide c.d.s., roulettes at foot and with traces at right, fine. Very rare, being the finer of the two examples recorded. Ceremuga Certificate (2009). Photo

PROVENANCE:
Harry Napier, September 1978
Peter Jaffé, March 2006

£1,200-1,500
- x361 ○ In black on perf 10 2d. orange-red, **printed both sides**, cancelled by part Adelaide c.d.s., a short perf at right otherwise fine. Rare, five examples recorded with another in the Royal Collection. Photo

PROVENANCE:
William Frazer, September 2003

£500-750
- x362 ○ In black on perf 10 orange-red, **overprint double in pair with normal**, cancelled by Adelaide c.d.s., fine. Rare, three examples recorded of which one is defective. RPSV Certificate (2009). Photo

Note: This error was first reported in the "Australian Stamp Journal" in December 1912.

PROVENANCE:
Rev. James Mursell, October 1964
Ron Butler, September 2004

£2,000-2,500

South Australia, Departmental and Official Stamps, P. (Police) - *contd.*



363

- x363 ○ In black on perf 10 2d. orange-red, **imperforate between stamp and margin at left**, cancelled by Adelaide c.d.s., fine. The only example recorded. Photo £100-200

Note: Generally this stamp would be dismissed as being a trimmed stamp from the inside of the right pane. However, the margin at left is too large to come from a trimmed interpanneau piece.



364



365

P.S. (Private Secretary)

- x364 ★ In black on perf 11½-12½x10 10d. on 9d. dull yellow, **imperforate between stamp and margin at top**, unused with small part original gum, fine. Ceremuga Certificate (2018). Photo £500-600

- x365 ○ In black on perf 10 4d. dull lilac, **imperforate between stamp and margin at left**, lightly cancelled by Adelaide c.d.s.; thinned though of fine appearance. Photo £100-200



366

P.O. (Post Office)

- x366 ○ In black on perf 11½-12½ 4d. dull lilac, **printed both sides**, cancelled by Adelaide c.d.s., centred to lower left as are all known examples, fine. Three examples are recorded all showing a very light second impression on reverse. Photo £1,500-2,000

Note: The first reference to this error is in "The Postage Stamps of South Australia" by James in 1947.



367



368

P.W. (Public Works)

- x367 ○ In red on rouletted 2d. vermilion, **no stop after “W”**, lightly cancelled by Adelaide c.d.s., roulettes or traces thereof on all sides, fine. Rare, only two examples recorded. Ceremuga Certificate (2018). Photo £500-600
- x368 ★ In red on rouletted 1/- red-brown, **no stop after “W”**, unused with trace of gum, roulettes on three sides, fine. Rare, three examples recorded. Ceremuga Certificate (2018). Photo £1,500-2,000



369



370

S.G. (Surveyor General)

- x369 ○ In black on rouletted 2d. orange-red, **overprint “S.C.” instead of “S.G.”**, neatly cancelled by Adelaide c.d.s. (7.10.69), roulettes or traces thereof on all sides, fine. Rare with about five examples known. Photo £500-600
- Note: For many years, the stamps overprinted “S.C.” in blue have been acknowledged as being from the Supreme Court. Examples of the “S.C.” overprint in black are very scarce and new evidence confirms that there was an error in the overprinting forme of “S.G.” (Surveyor General). The discovery of a pair overprinted “S.C. S.G.” in black now validate that “S.C.” in black is an overprinting error for the Surveyor General’s Department.*

- x370 ○ In black on perf 10 2d. orange-red, **overprint “S.C.” instead of “S.G.”**, neatly cancelled by Adelaide c.d.s. (5.1.74), fine. Rare with about five examples known. Photo £500-600



371



372

S.M. (Stipendary Magistrate)

- x371 ○ In red on rouletted 2d. vermilion, **no stop after “M”**, lightly cancelled, roulettes or traces thereof on all sides, small thin at foot. Photo £300-400
- x372 ○ In blue on rouletted 2d. orange-red, a horizontal pair **imperforate between**, lightly cancelled, roulettes or traces thereof on all sides, fine. Rare, three examples recorded. Photo £1,000-1,200

South Australia, Departmental and Official Stamps - *contd.*



373



374

S.T. (Superintendent of Telegraphs)

x373 ★ In red on rouletted 6d. dull ultramarine, **no stop after "T"**, unused without gum, traces of roulettes on three sides, fine. Rare, only two unused examples recorded. Photo £1,200-1,500

PROVENANCE:
Harry Napier, March 1979
Hamilton, October 1980
Lord Vestey, January 2013

x374 ○ In black on rouletted 6d. dull ultramarine, **no stop after "T"**, lightly cancelled, roulettes or traces thereof on three sides, fine. Photo £100-150

"O.S." (Official Stamps)

The lots represented here are the first comprehensive collection of South Australian Official stamps ever to be offered at auction. In the past, these stamps have been generally unloved by the collecting community, with many errors forming part of collection lots up to the 1980s. Recently, there has been a new appreciation of these officials, and the difficulty in acquiring many of the errors listed in the Stanley Gibbons catalogue. Many of the major overprint errors are represented here, offering the new collector an opportunity to acquire these rarities to form a more comprehensive holding, or the core seasoned collector the chance to fill some vacant gaps.



375



376



x375 ○ 1874-77 perf 11½-12½ 1d. deep yellow-green, **printed both sides**, fine used. Thirteen examples recorded with another three in public collections. S.G. O6a, £1300. Photo £800-1,000

Note: This error was first reported in the "Philatelic Record" in October 1884 and was listed by Stanley Gibbons in 1903. The second impression on reverse is very clearly printed, unlike its unoverprinted counterpart at SG 64a.

PROVENANCE:
William Frazer, September 2003

x376 ○ 1874-77 perf 11½-12½ 1d. deep yellow-green, **printed both sides**, fine used. Thirteen examples recorded with another three in public collections. S.G. O6a, £1300. Photo £800-1,000

PROVENANCE:
William Frazer, September 2003



377

- x377 ○ 1874-77 perf 11½-12½ 3d. on 4d. ultramarine, **no stop after “S”**, lightly cancelled, fine. Rare, two examples recorded and one of the great rarities of the South Australia Official issues. R.P.S. Certificate (1967). S.G. O7a, £4500. Photo £2,000-2,500
- PROVENANCE:
M. Burrus, November 1962



378

- x378 ○ 1874-77 perf 11½-12½ 9d. red-purple, **no stop after “S”**, clearly cancelled, fine. Rare with only five examples recorded. R.P.S. Certificate (2008). S.G. O11a, £2500. Photo £1,500-2,000



379



380

- x379 ○ 1874-77 perf 11½-12½ 1/- red-brown with **overprint double** (closely spaced), centred to left, fine used. Rare, three examples recorded. RPSV Certificate (2009). S.G. O12a, £375. Photo £200-300
- Note: This error was first reported in the “London Philatelist” in April 1897 and listed by Stanley Gibbons in 1903.*
- x380 ○ 1874-77 perf 11½-12½ 1/- red-brown horizontal pair with **overprint double** (widely spaced), fine used. Two pairs and a strip of three are recorded in this variation of the error. RPSV Certificate (2007). S.G. O12a, £550. Photo £300-400

South Australia, Departmental and Official Stamps, "O.S." (Official Stamps) - *contd.*

- x381 ○ 1874-77 perf 11½-12½x10 4d. dull violet (2), **imperforate between stamp and margin at left**, and perf 11½-12½ 4d. dull violet with **no stop after "S"**, 6d. Prussian blue strip of three with **double perforations** along top, 1/- red-brown with **no stop after "S"** and 2/- carmine with **no stop after "S"**; all used, fine £150-200
- x382 ○ 1876-85 watermark Broad Star selection comprising perf 10x11½-12½ 4d. dull mauve pair, one with **no stop after "S"**, 4d. plum with **perforations double** at left and at right, 6d. bright blue (3), two with **perforations double** and one **imperforate between stamp and margin at left**, 6d. bright ultramarine (2) with **no stop after "S"**, one also a double impression, and 1/- red-brown (2, one with stain spot) with **no stop after "S"**; perf 11½-12½ 4d. deep mauve, 1/- red-brown and 2/- rose-carmine, all with **no stop after "S"**, and 1/- red-brown with **double perforations** at right. All used and generally fine £200-250



383



384

- x383 ★ 1876-85 perf 10x11½-12½ 4d. deep mauve with **no stop after "S"**, unused with part original gum, fine. Rare, only two unused examples recorded and under-catalogued at £300. S.G. O17a. Photo £250-300
- x384 ○ 1876-85 perf 10x11½-12½ 4d. deep mauve, **no stop after "O"**, lightly cancelled, fine. This is the only example seen by the owner. S.G. O17b, unpriced. Photo £150-200
- Note: The errors with no stop after "O" are very rare and much more difficult to acquire compared to the no stop after "S" errors.*

SPINK LIVE

Spink Live is now running on a new and improved bidding platform
 Accessible online through www.spink.com and also available iOS and Android devices

Bidding on 'Spink Live' remains free of charge

Download on the
App Store

GET IT ON
Google Play

MY ACCOUNT

- Login
- Consign An Item
- Watched Lots
- My Bids

- Medals
- Stamps
- Watches
- Whiskies & Spirits
- Wines

LOT 3: SEAL, 5 songs, including all used 1,000

LOT 4: RANDY CRAWFORD & JOE SAMPLE, 4 used 7,000

CURRENT HISTORY

Click to Login / Register
 Tick your Interests
 Scroll the Lots
 Slide to Bid

For any enquiries or further assistance please contact:
 Tel: +44 (0)20 7563 4112 | Email: spinklive@spink.com

SPINK

WHERE HISTORY IS VALUED



385



386



387



388

- x385 ○ 1876-85 perf 10x11½-12½ 4d. deep mauve with **“O.S.” double**, very lightly cancelled, straight-edge at foot, fine. Three used examples recorded in private hands with others in the Royal and Vickery Collections. RPSV Certificate (2013). S.G. O17c, unpriced. Photo £300-400
- x386 ○ 1876-85 perf 10x11½-12½ 4d. deep mauve with **“O.S.” double, one inverted**, clearly cancelled, perfs at right trimmed otherwise fine. The only example recorded. Unlisted by S.G. Photo £500-600
- x387 ★ 1876-85 perf 10x11½-12½ 4d. deep mauve with **“O.S.” double** (the lighter second impression 1mm. to right), unused without gum, centred to left, fine. The only unused example recorded. S.G. O17c, unpriced. Photo £400-500
- x388 ★ 1876-85 perf 10x11½-12½ 4d. deep mauve with **“O.S.” inverted** and tops of letters sliced off, unused without gum, fine. Rare and the finer of the two examples recorded. Ceremuga Certificate (2018). S.G. O17d, £1000. Photo £750-1,000



389



390



391

- x389 ○ 1876-85 perf 10x11½-12½ 4d. deep mauve with **“O.S.” inverted**, cancelled by duplex, fine. Eight used examples in private hands recorded plus examples in the Royal and Vickery Collections. RPSV Certificate (2013). S.G. O17d, £350. Photo £200-300
- x390 ○ 1876-85 perf 10x11½-12½ 4d. deep mauve, a horizontal pair **imperforate between**, lightly cancelled, fine. Very rare, only two examples recorded. RPSV Certificate (2011). S.G. 17e, unpriced. Photo £2,000-2,500
- Note: This error first came to the notice of collectors with the auction of this pair in the Ferrari sale in 1923. The certification of this pair led to its listing in the 2015 Stanley Gibbons catalogue.*
- PROVENANCE:
 Ferrari, June 1923
 Crocker, October 1938
 Harry Napier, September 1979
- x391 ○ 1876-85 perf 10x11½-12½ 4d. deep mauve with **overprint misplaced reading “S” “O” at foot**, fine used. A dramatic error. Photo £100-150

South Australia, Departmental and Official Stamps, "O.S." (Official Stamps) - *contd.*



392



393



394



395

- x392 ★ 1876-85 perf 10x11½-12½ 6d. bright blue with **"O.S." inverted**, unused without gum, fine. The only unused example recorded. Ceremuga Certificate (2018). S.G. O18a, £1500. Photo £750-1,000
- x393 ○ 1876-85 perf 10x11½-12½ 6d. bright blue with **"O.S." inverted**, fine used. Two other examples recorded with another in the Royal Collection. S.G. O18a, unpriced. Photo £200-300
- x394 ○ 1876-85 perf 10x11½-12½ 6d. bright blue with **no stop after "O"**, centred to lower left, lightly cancelled, fine. This is the only example seen by the owner. S.G. O18b, unpriced. Photo £150-200
- x395 ★ 1876-85 perf 10x11½-12½ 6d. bright blue with **mixed perforations 10 and 11½ at left**, unused without gum, fine. RPSV Certificate (2011). S.G. O18c, unpriced. Photo £250-300

Note: Although there are a number of compound perforations from South Australia, mixed perforations are rare. Discovered in 2011, this stamp led to the listing by Stanley Gibbons in 2013. To date, four examples have been recorded.



396



397



398

- x396 ○ 1876-85 perf 10x11½-12½ 6d. bright blue with **mixed perforations 10 and 11½ at left**, fine used. S.G. O18c, unpriced. Photo £250-300
- x397 ○ 1876-85 perf 10x11½-12½ 6d. bright ultramarine with **"O.S." double, one inverted**, lightly cancelled, fine. Rare, five examples recorded. S.G. O19c, £650. Photo £250-300
- Note: The first report of this error was in the "Australasian Stamp Monthly" in November 1938. This stamp is cancelled by the Port Elliot squared-circle datestamp, as is the Napier example.*
- x398 ★ 1876-85 perf 10x11½-12½ 6d. bright ultramarine with **double impression**, unused with large part original gum, fine. A very bright shade with the doubling evident across the whole stamp. S.G. O19. Photo £200-250



399



400



401



402

- x399 ★ 1876-85 perf 10x11½-12½ 1/- red-brown vertical pair, the upper stamp with **no stop after “O”**, unused with large part original gum, fine. The only example recorded. S.G. O20b, unpriced. Photo £500-750
- x400 ○ 1876-85 perf 10x11½-12½ 2/- carmine with **“O.S.” inverted**, fine used. Five examples are recorded with further examples in the Royal and Vickery Collections. RPSV Certificate (2011). S.G. O21a, £600. Photo £250-300
- Note: This error was first reported in “South Australia” by Napier in 1894 and listed by Stanley Gibbons in 1903.*
- x401 ○ 1876-85 perf 11½-12½, 4d. deep mauve with **“O.S.” inverted**, fine used. Five examples recorded. RPSV Certificate (2011). S.G. O24a, £850. Photo £250-300
- Note: This error was first reported in the “London Philatelist” in April 1892 and listed by Stanley Gibbons in 1917.*
- x402 ○ 1876-85 perf 11½-12½, 4d. deep mauve with **“O.S.” inverted**, fine used. Five examples recorded. RPSV Certificate (2008). S.G. O24a, £850. Photo £250-300



403



404



405

- x403 ★ 1876-85 perf 11½-12½, 1/- red-brown with **“O.S.” inverted**, unused with small part original gum, fine. Three unused examples recorded. RPSV Certificate (2014). S.G. O27a, £1000. Photo £500-750
- x404 ○ 1876-85 perf 11½-12½, 1/- red-brown with **“O.S.” inverted**, centred to upper left, fine used. Ten used examples in private hands recorded. RPSV Certificate (2008). S.G. O27a, £300. Photo £150-200
- x405 ★ 1876-85 perf 11½-12½, 1/- red-brown horizontal pair, the left stamp with **no stop after “S”**, unused with large part original gum, fine. Rare, being one of two mint multiples showing this variation. S.G. O27b, £375+. Photo £400-500

South Australia, Departmental and Official Stamps, "O.S." (Official Stamps) - *contd.*



406



407



408



409

- x406 ○ 1876-85 perf 11½-12½, 1/- red-brown with **"O.S." double**, fine used. The only example recorded. RPSV Certificate (2017). S.G. O27c, £550. Photo £500-750
- Note: This error was first reported in the "Australasian Stamp Monthly" in April 1947, however, it was not catalogued by Stanley Gibbons until the discovery of this stamp in 2017. There is another example in the Royal Collection.*
- x407 ★ 1876-85 perf 11½-12½, 2/- rose-carmine with **no stop after "S"**, unused with large part original gum; small corner crease otherwise fine. The only unused example recorded. RPSV Certificate (2019). S.G. O29c, unpriced. Photo £400-500
- x408 ○ 1876-85 perf 11½-12½, 2/- rose-carmine with **"O.S." inverted**, very lightly cancelled, centred to left, fine. Rare, only two examples recorded and under-catalogued at £400. RPSV Certificate (2011). S.G. O29b. Photo £250-300
- x409 ○ 1876-85 perf 11½-12½, 2/- rose-carmine with **"O.S." double**, fine used. Three examples recorded with another in the Royal Collection, and under-catalogued at £350. RPSV Certificate (2007). S.G. O29a. Photo £250-300
- x410 ○ 1891-1902 perf 11½-12½, 1/- Vandyke brown with **double perforations** at left, 1/- dull brown strip of three, the centre stamp with **no stop after "S"**, 1/- sepia with **no stop after "S"**, 2/- carmine (2), one with **perforations double** at right, the other with **no stop after "S"** plus a vertical strip of four (faults) with **offset** on reverse, and perf 10x11½-12½ 2/- rose carmine pair, one with **no stop after "S"**; all used, fine £200-250



411



412



413

- x411 ○ 1891-1902 perf 11½-12½, 1/- sepia with **"O.S." double** (widely spaced), centred to upper left, fine used. RPSV Certificate (2011). S.G. O33a, £550. Photo £250-300
- Note: This error was listed by Stanley Gibbons in 1903. It is a very rare error and is found in two different variations. Four examples of this variant recorded.*
- x412 ○ 1891-1902 perf 11½-12½, 1/- sepia with **"O.S." double** (closely spaced), fine used. Two examples of this variant are recorded. RPSV Certificate (2013). S.G. O33a, £550. Photo £250-300
- x413 ★ 1891-1902 perf 11½-12½, 2/- rose-carmine with **"O.S." double**, unused with large part original gum, centred to left, fine. The only unused example recorded. RPSV Certificate (2013). S.G. O35b, unpriced. Photo £500-750

- x414 1874-76 watermark Crown over SA (wide), perf 10 2d. orange-red used horizontal pair, the left stamp with **no stop after "S"**, and 1876-80 watermark Crown over SA (close), perf 10 1d. blue-green (8), one used with **"O.S." inverted**, two unused without gum showing **"O.S." double**, widely and closely spaced, the latter with straight-edge at top, one used **without stops**, one used with **no stop after "O"**, one used with **"S" omitted** and a mint vertical pair (the upper stamp with thin) with **"O.S." offset** on reverse. A good lot and generally fine £200-250



415



417



418



419

- x415 ○ 1876-80 watermark Crown over SA (close), perf 10 1d. blue-green with **"O.S." double, one inverted**, fine used. Three examples recorded with another in the Vickery Collection. RPSV Certificate (2013). S.G. O43c, unpriced. Photo £200-250
- x416 ○ 1876-80 watermark Crown over SA (close), perf 10 2d. orange-red (10) with **"O.S." inverted** (2, one with overprint misplaced sideways), **"O.S." double** (3, different variants), **no stops** (2), **no stop after "O"** (2) and **"S." omitted**; perf 10x11½-12½ 1d deep green with **double perforations**; and 1882 ½d. on 1d. blue-green (2) with **"O.S." grossly misplaced**. All used, mostly fine £400-500
- x417 ○ 1876-80 watermark Crown over SA (close), perf 10 2d. orange-red with **"O.S." double, one inverted**, fine used. Five examples recorded. RPSV Certificate (2013). S.G. O44c, unpriced. Photo £200-250
- x418 ○ 1876-80 watermark Crown over SA (close), perf 10x11½-12½ 2d. orange-red with **"O.S." inverted**, a "narrow" stamp very lightly cancelled, fine. Two examples recorded and under-catalogued at £375. Photo £200-250
- x419 ○ 1876-80 watermark Crown over SA (close), perf 10x11½-12½ 2d. orange-red with **mixed perforations** at top, fine used. The only example recorded and unlisted by Stanley Gibbons. RPSV Certificate (2016). Photo £200-250



420



421

- x420 ○ 1876-80 watermark Crown over SA (close), perf 10x11½-12½ 1d. deep green with **"O.S." double**, lightly cancelled, fine. The only example seen by the owner. S.G. O45a, unpriced. Photo £200-250
- x421 ○ 1891 perf 10 2½d. on 4d. deep green with **"O.S." double**, lightly cancelled, fine. Three examples recorded. RPSV Certificate (2011). S.G. O51c, unpriced. Photo £300-400

South Australia, Departmental and Official Stamps, "O.S." (Official Stamps) - *contd.*



422

- x422 ○ 1891 perf 10 2½d. on 4d. deep green vertical pair, the lower stamp with "O.S." omitted, lightly cancelled, some perfs reinforced, fine. Rare, three examples recorded. RPSV Certificate (2011). S.G. O51d, £4500. Photo

£1,500-2,000
- x423 ○ 1891-96 perf 10 1d. deep green (3), one with no stop after "S" and two with double perforations, and 2d. orange-red pair, one with no stop after "S"; perf 15 2d. orange-red (3) with "O.S." inverted, "O.S." double and double perforations; and perf 13 1d. (3) with no stop after "S" (marginal with plate number), "O.S." misplaced sideways (2, one mint) and 2d. orange-red with no stop after "S"; all used, mostly fine

£200-250



424



425



- x424 ○ 1891-96 perf 10 1d. deep green (2), both with "O.S." double (different variants), both unused with part to large part original gum, one with tiny thin at top. S.G. O54a, £550. Photo

£200-300
- x425 ○ 1891-96 perf 10 1d. deep green with "O.S." double, small thin at lower left corner otherwise fine used. Two used examples recorded. S.G. O54a, £110. Photo

£100-150



426



427

- x426 ★ 1891-96 perf 15 1d. green with **“O.S.” inverted**, unused without gum, fine. RPSV Certificate (2008). S.G. O56c, unpriced. Photo £300-400

Note: Discovered in 2008, this is the only example recorded of this error which led to its listing in the 2010 Stanley Gibbons catalogue.

- x427 ★ 1891-96 perf 13 2d. orange red horizontal pair with **“O.S.” double**, one with light tone on reverse at top, otherwise fine mint. The only mint examples recorded. Ceremuga Certificate (2018). S.G. O59a, £500+. Photo £300-400



428



429

- x428 ★ 1891-96 perf 13 1d. green with **no stop after “S”**, unused with part original gum, top right corner perf with tone on reverse, otherwise fine. S.G. O58a, £200. Photo £100-150

- x429 ★ 1891-96 perf 13 2d. orange-red horizontal pair, the right stamp with **no stop after “S”**, fine mint. S.G. O59b, £180+. Photo £200-250

**THIS AUCTION IS CONDUCTED
BEHIND CLOSED DOORS.**

**FOLLOW THE AUCTION AND BID ON SPINKLIVE
AS IF YOU WERE IN THE ROOM.**

TELEPHONE AND COMMISSION BIDDING ARE ALSO WELCOME.

South Australia, Departmental and Official Stamps, "O.S." (Official Stamps) - *contd.*



430



432



433



434

- x430 ★ 1891-96 perf 13 2d. orange-red with "O.S." **inverted**, fine mint. The only example recorded. RPSV Certificate (2007). S.G. O59c, unpriced. Photo £300-400
- Note: Discovered in 2008, this stamp led to its listing in the 2010 Stanley Gibbons catalogue.*
- x431 ○ 1891-99 perf 10 ½d. brown with **no stop after "S"** and a strip of four, the centre pair with "O.S." **raised**, 4d. violet (2) with **no stop after "S"** and 6d. blue pair, one with **no stop after "S"**; perf 15 4d. pale violet pair (mint) with **double perforations** and a single with "O.S." **misplaced sideways**; perf 13 4d. with "O.S." **double** and 6d. blue with **no stop after "S"**; 1891 perf 10 2½d. on 4d. deep green with **no stop after "S"**; and 1897-1901 perf 13 2½d. violet-blue and 5d. purple with **no stop after "S"**; all used, mostly fine £100-150
- x432 ★ 1891-99 perf 10 ½d. brown with "O.S." **inverted**, fine mint. The only example recorded. RPSV Certificate (2008). S.G. O60a, £300. Photo £300-400
- Note: Discovered in 2009, this stamp led to its listing in the 2011 Stanley Gibbons catalogue.*
- x433 ★ 1891-99 perf 10 ½d. brown horizontal pair, the left stamp with **no stop after "S"**, fine mint. The only mint example known to the owner. S.G. O60b, £170+. Photo £100-200
- x434 ○ 1891-99 perf 10, 4d. pale violet, two examples with "O.S. **double** (different variants), fine used. Only two other examples recorded. S.G. O61a, unpriced. Photo £300-400



435



436



437



438

- x435 ★ 1891-99 perf 10, 6d. blue with **no stop after "S"**, fine mint. The only mint example known to the vendor. S.G. O62a, unpriced. Photo £200-300
- x436 ★ 1891-99 perf 15 4d. slate-violet horizontal pair with "O.S." **double**, the right stamp with a slightly rounded top right corner, otherwise fresh and fine mint. S.G. O66a, £1100+. Photo £500-600
- Note: The only mint examples derive from a block of eight discovered in the late 1980s and divided into two singles and three pairs.*
- x437 ○ 1891-99 perf 15 4d. slate-violet with "O.S." **double**, lightly cancelled, fine. The only used example known to the vendor. S.G. O66a, £180. Photo £150-200
- x438 ★ 1891-99 perf 13 ½d. deep brown horizontal pair with "O.S." **triple, double sideways reading up**, fine mint. Two mint pairs and a strip of four recorded. S.G. O68a, £1000. Photo £500-750



439



440



441

- x439 ○ 1891-99 perf 13 ½d. deep brown horizontal pair with “O.S.” triple, double sideways reading down, the left stamps with two small black spots on reverse otherwise fine used. The only example of this variant recorded. S.G. O68a, unpriced. Photo £500-750
- x440 ★ 1891-99 perf 13 ½d. pale brown horizontal pair with “O.S.” inverted, fine mint. The only examples recorded. RPSV Certificate (2007). S.G. O68b, unpriced. Photo £500-750
Note: Discovered in 2007, this pair led to its listing in the 2010 Stanley Gibbons catalogue.
- x441 ★ 1891-99 perf 13 4d. violet with “O.S.” double, fine mint. Three mint examples recorded. S.G. O69a, £750. Photo £300-400



442



443

- x442 ★ 1891-99 perf 13 4d. violet with no stop after “S”, fine mint. S.G. O69b, £375. Photo £150-200
- x443 ★ 1891-99 perf 13 6d. blue with no stop after “S”, fine mint. S.G. O70a, £275. Photo £150-200
- x444 ★ 1891-95 perf 10 2½d. on 4d. deep green block of eighteen (6x3), the third stamp in the middle row showing “2” and “½” closer together, fresh and fine mint. S.G. O71/b, £820+ £150-200



445



446

- x445 ★ 1891-95 perf 10 2½d. on 4d. deep green with “O.S.” inverted, unused with part original gum, fine. The only example recorded and under-catalogued. S.G. O71c, £600. Photo £750-1,000
PROVENANCE:
Harry Napier, September 1979
Sir Gawaine Baillie, July 2005
- x446 ★ 1891-95 perf 10 2½d. on 4d. deep green horizontal pair, the right stamp with no stop after “S”, fine mint. S.G. O71d, unpriced. Photo £200-250

South Australia, Departmental and Official Stamps, "O.S." (Official Stamps) - *contd.*



447

x447 ★ ㊦

1891-95 perf 10x11½-12½ 5d. on 6d. deep brown, a top right corner block of nine with two showing **no stop after "S"**, the lower left corner stamp with blunt corner and some damage in top selvedge otherwise fine mint. S.G. O72a, £1385. Photo

£300-400

Note: This error was first reported in the "Stanley Gibbons Monthly Journal" in December 1917 and listed by Stanley Gibbons the same year. This block provides the proving evidence that the error appeared twice in the right pane at positions 12 and 16. It is the only multiple recorded.

x448

1899-1901 ½d. yellow-green mint with "O.S." **inverted**, mint and used with **no stop after "S"** and mint with "O.S. **misplaced sideways**, 1d. rosine mint and used with "O.S." **inverted**, a mint strip of four, one with **no stop after "S"**, 2d. bright violet used with "O.S." **inverted**, used with "O.S." **misplaced to right** and mint with **no stop after "S"**, 2½d. indigo with "O.S." **inverted** and **no stop after "S"**, both used, 4d. violet with **no stop after "S"** and **misplaced with "O" only**, both used, and 6d. blue with **no stop after "S"** and "O.S." **misplaced to left**, both used. A good lot

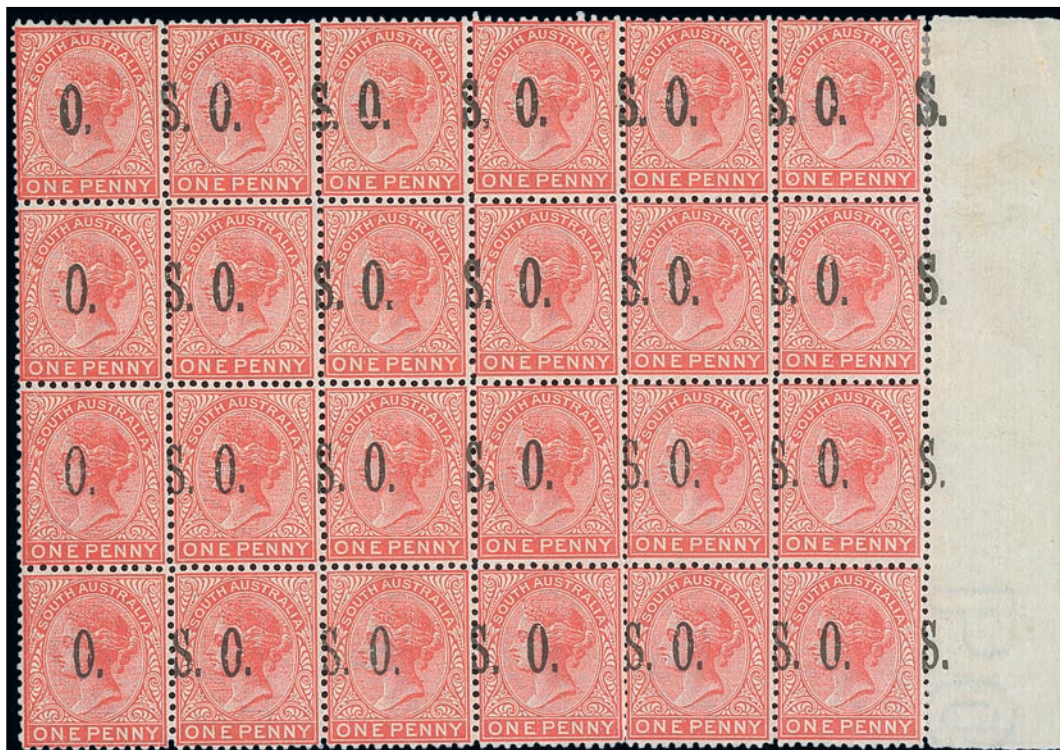
£500-750

**THE "DUBOIS" COLLECTION OF JAMAICA
POSTAL HISTORY AND STAMPS**



TO BE OFFERED IN 2020-21 IN TWO PARTS

Considered to be the greatest collection of Jamaica ever assembled



449

x449 ★ 田

1899-1901 1d. rosine block of twenty-four (6x4) with margin at right showing “O.S.” grossly misplaced to right leaving the first column with “O” only the rest showing “S.O.” misplacement, some split perfs between stamps and margin, fine mint. An outstanding piece. S.G. O81. Photo

£500-750



450

x450 ○

1899-1901 1d. rosine with “O.S.” double, fine used. S.G. O81b, £650. Photo

£100-150



451

x451 ★ 田

1899-1901 2d. bright violet block of four with “O.S.” inverted, fine mint. The only block recorded. S.G. O83a, £800+. Photo

£400-500

South Australia, Departmental and Official Stamps, "O.S." (Official Stamps) - *contd.*



452

- x452 ★ 1899-1901 2d. bright violet, three mint singles showing different variants of "O.S." misplaced sideways, fine, rare in mint condition. S.G. O82. Photo £150-200



453



454



455

- x453 ★ 1899-1901 2½d. indigo with "O.S." inverted, fine, rare in mint condition. S.G. O83a, £600. Photo £150-200
- x454 ○ 1899-1901 2½d. indigo with "O.S." inverted and misplaced to right, fine used. S.G. O83a, £225+. Photo £100-150
- x455 ★ 1899-1901 2½d. indigo with "O.S." inverted and no stop after "S", fine mint. The only example recorded and not listed in this variant by Stanley Gibbons. RPSV Certificate (2019). S.G. O83a/b. Photo £500-750

Note: Discovered in 2019, this is the first example recorded of any value from the Type 3 "O.S." overprint form exhibiting the combination of inverted overprint with no stop after "S"



456



457

- x456 ★ 1899-1901 4d. violet with "O.S." inverted, fine mint. The only recorded example and under-catalogued at £650. S.G. O84a. Photo £800-1,000
- x457 ★ 1899-1901 4d. violet horizontal pair, the left stamp with no stop after "S", fine mint. S.G. O84b, £275. Photo £300-400



458

- x458 ★ 1899-1901 4d. violet, two examples with “O.S.” misplaced, fine mint. S.G. O84. Photo £200-300
- x459 ★ 1899-1901 6d. blue, a block of thirty (6x5) being the top half of a right pane with plate and sheet numbers and showing marginal watermark “SUOTH” for “SOUTH”, fine mint. The only example known and believed to be the largest multiple recorded of this stamp. S.G. O85 £200-300

PROVENANCE:
Ron Butler, September 2004

THE END OF THE SALE

**THIS AUCTION IS CONDUCTED
BEHIND CLOSED DOORS.**

**FOLLOW THE AUCTION AND BID ON SPINKLIVE
AS IF YOU WERE IN THE ROOM.**

TELEPHONE AND COMMISSION BIDDING ARE ALSO WELCOME.

SPINK

WHERE HISTORY IS VALUED

THE “DUBOIS” COLLECTION OF JAMAICA POSTAL HISTORY AND STAMPS

TO BE OFFERED IN 2020-21 IN TWO PARTS

Considered to be the greatest collection of Jamaica ever assembled



For further information please contact

Nick Startup | +44(0)20 7563 4073 | nstartup@spink.com

David Parsons | +44 (0)207 563 4072 | dparsons@spink.com

SPINK LONDON | 69 Southampton Row | WC1B 4ET | United Kingdom



WWW.SPINK.COM #SPINK_AUCTIONS

SPINK

LONDON
1666

NAME _____

ADDRESS _____

POSTCODE _____

WRITTEN BIDS FORM

This form should be sent or faxed to the Spink auction office in advance of the sale. References for new clients should be supplied in good time to be taken up before the sale. Bids received later than one hour before the start of the sale may not be processed.

Sale Venue: Auction is conducted behind closed doors.

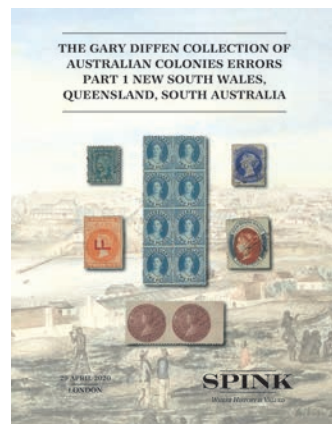
69 Southampton Row, Bloomsbury,
London WC1B 4ET

tel: +44 (0)20 7563 4005

fax: +44 (0)20 7563 4037

email: auctionteam@spink.com

YOU CAN ALSO BID IN REAL TIME ON SPINK LIVE.
PLEASE DOWNLOAD SPINK LIVE APP FROM THE
APP STORE OR VISIT WWW.SPINK.COM,
REGISTER AND LOG INTO THE SALE.



SALE TITLE

**The Gary Diffen Collection of
Australian Colonies Errors, Part 1**

DATE

**Wednesday 29 April 2020
at 10.00 a.m.**

CODE NAME

ERROR

SALE NO.

20030

I request Spink, without legal obligations of any kind on its part, to bid on the following Lots up to the price given below. I understand that if my bid is successful the Purchase Price will be the sum of the final bid and Buyer's Premium as a percentage of the final bid, any VAT chargeable, also postage charge and a fee for paying by card. The Rate of Buyer's Premium is 20% of the final hammer price of each lot. I understand Spink will pursue me for payment for any successful bid. In addition, I understand and consent that Spink may share my personal details relating to the default with other auction houses and live bidding platforms to protect themselves from such defaults.

All bids shall be treated as offers made on the Terms and Conditions for Buyers printed in the catalogue. I also understand that Spink provides the service of executing bids on behalf of clients for the convenience of clients and that Spink will not be held responsible for failing to execute bids. If identical commission bids are received for the same Lot, the commission bid received first by Spink will take precedence. Please note that you will not be notified if there are higher written bids received.

**BIDDERS PLEASE NOTE OUR EXTENSION CLAUSES IN OUR TERMS AND CONDITIONS FOR BUYERS
PLEASE PRINT CLEARLY IN BLOCK LETTERS AND ENSURE THAT BIDS ARE IN STERLING**

Lot Number (in numerical order)	Price Bid £ (excluding Buyer's Premium)

Lot Number (in numerical order)	Price Bid £ (excluding Buyer's Premium)

Lot Number (in numerical order)	Price Bid £ (excluding Buyer's Premium)

Please hold my purchased lots for collection

TEL. HOME _____ TEL. OFFICE _____

FAX _____ E-MAIL _____

SIGNATURE _____ VAT NUMBER _____

I agree to receive notifications about Spink auctions, news and events via email and direct mail

I agree to receive marketing notifications related only to the following categories (*please select as appropriate*)

Autographs / Banknotes / Bonds & Shares / Books / Coins / Comics / Handbags / Jewellery / Maps / Medals / Stamps / Watches / Whiskies & Spirits / Wine / Corporate News & Events

We will use the personal information you provide to us as set out in our privacy notice available at www.spink.com/privacy-policy

Continued ...



DATE

Wednesday 29 April 2020
at 10.00 a.m.

SALE NO.

20030

PLEASE PRINT CLEARLY IN BLOCK LETTERS AND ENSURE THAT BIDS ARE IN STERLING

Lot Number (in numerical order)	Price Bid £ (excluding Buyer's Premium)

Lot Number (in numerical order)	Price Bid £ (excluding Buyer's Premium)

Lot Number (in numerical order)	Price Bid £ (excluding Buyer's Premium)

All Corporate cards regardless of origin and Consumer debit and credit cards issued outside the EU are subject to a fee of 3%

CARD NO: START DATE: ISSUE NO: SECURITY CODE:

SIGNATURE EXPIRY DATE NAME (ON CREDIT CARD)

TYPE OF CARD: CONSUMER DEBIT (UK OR EU) CONSUMER DEBIT (NON EU) CONSUMER CREDIT (UK OR EU) CONSUMER CREDIT (NON EU) ALL CORPORATE

Please charge all purchases to my card Do not charge my card. (Spink will charge your card should you default on the payment)

BIDDING INCREMENTS
Bidding generally opens below the low estimate and advances in the following order although the auctioneer may vary the bidding increments during the course of the auction. The normal bidding increments are:

Up to £100	by £5	£3,000 to £6,000	£3,200-£3,500-£3,800-£4,000 etc.
£100 to £300	by £10	£6,000 to £10,000	by £500
£300 to £600	£320-£350-£380-£400 etc.	£10,000 to £20,000	by £1,000
£600 to £1,000	by £50	£20,000 and up	Auctioneer's discretion
£1,000 to £3,000	by £100		

VAT is chargeable on the Hammer price and the Buyer's Premium of daggered (†) and (Ω) lots at the standard rate (currently 20%), and on lots marked (x) at the reduced rate (currently 5% on the Hammer price and 20% on the Buyer's Premium). VAT on Margin Scheme lots (identified by the absence of any VAT symbol next to the lot number) is payable at 20% on the Buyer's Premium only.

REFERENCES REQUIRED FOR CLIENTS NOT YET KNOWN TO SPINK

TRADE REFERENCES _____

BANK REFERENCES _____

SPINK

WHERE HISTORY IS VALUED

STAMPS & COVERS OF GREAT BRITAIN

13 MAY 2020 | LONDON



For further information please contact:

Neill Granger | +44(0)20 7563 4077 | ngranger@spink.com

Dominic Savastano | +44(0)20 7563 4094 | dsavastano@spink.com

SPINK LONDON | 69 Southampton Row | WC1B 4ET | United Kingdom



WWW.SPINK.COM #SPINK_AUCTIONS



SPINK

WHERE HISTORY IS VALUED

SPINK ON SOCIAL MEDIA

Follow Spink on social media and gain an extra insight into some of the most exciting items in our auctions from across the globe. Watch our auction podcasts on Youtube and get a specialist's view, scan the QR code and engage with our Wechat page, there's always something fascinating at Spink!



#SPINK_AUCTIONS
WWW.SPINK.COM



e-auctions **SPINK**

HOW TO BID IN e-AUCTIONS

LOTS OFFERED ARE AVAILABLE FOR SALE ONLINE ONLY

on www.spink.com or on the Spink Live App, which can be downloaded from App Store or Google Play



To be able to participate in our e-Auctions you need to be registered on **WWW.SPINK.COM** or via the **SPINK LIVE APP**.



Log on to www.spink.com by entering your Client Number and Password. Click on the **SPINK LIVE** button on the homepage and select the internet auction you would like to participate in. Use the same credentials to log into the App via the menu. Select the sale and click on **VIEW LOTS**.



Select the lot you would like to bid on and place a bid. You can also place your max bid and the software will bid on your behalf increasing the price in increments to keep you in the lead up to your max bid.



If you are outbid you will receive an email notification giving you the option to increase your bid before the closing time.



The first lot will close on the date and time stated in the auction calendar. Each subsequent lot will close at 30 second intervals. The closing time of each lot will be displayed in the description. If a bid is placed within 30 seconds of the closing time it will be extended by a further 30 seconds, and so on. These lot/s will be automatically placed in order of the new closing time



The highest bid at the closing time will be the successful bid and the price will be the hammer price. All lots sold in the e-Auction are subject to charges per section 5 and all clauses of the T & C for Buyers (e-Auctions).



Invoices will be emailed after the last lot has closed. Invoice total will consist of hammer price, buyer's premium of 20% on hammer price, VAT (where applicable) and postage. Payment will be due within seven (7) days for all clients.

For more information about how to bid in e-Auctions, please contact the Auction Team:
Email: spinklivesp@spink.com

#SPINK_AUCTIONS WWW.SPINK.COM

TERMS AND CONDITIONS FOR BUYERS

These conditions set out the terms on which we (**Spink and Son Limited** of 69 Southampton Row, Bloomsbury London WC1B 4ET (company no. 04369748)) contract with you (**Buyer**) either as agent on behalf of the Seller or as principal if we are the Seller. You should read these conditions carefully.

1 DEFINITIONS

The following definitions apply in these conditions:

Auctioneers' Margin Scheme	means a VAT margin scheme as defined by HM Revenue & Customs;
Buyer's Premium	means the charge payable by you as a percentage of the Hammer Price, at the rates set out in clause 5.1 below;
Certificate of Authenticity	means a certificate issued by an Expert Committee confirming the authenticity of a Lot;
Expert Committee	means a committee of experts to whom a Lot may be sent for an extension in accordance with clause 3.4.3;
Forgery	means a Lot constituting an imitation originally conceived and executed as a whole with a fraudulent intention to deceive as to authorship, origin, age, period, culture or source where the correct description as to such matters is not reflected by the description in the catalogue and which at the date of the auction had a value materially less than it would have had if it had been in accordance with the description in the catalogue. Accordingly, no Lot shall be capable of being a Forgery by reason of any damage and/or restoration work of any kind (including re-enamelling);
Hammer Price	means the amount of the highest bid accepted by the auctioneer in relation to a Lot;
Lot	means any item deposited with us for sale at auction and, in particular, the item or items described against any Lot number in any catalogue;
Reserve	the amount below which we agree with the Seller that the Lot cannot be sold;
Seller	means the owner of the Lot being sold by us;
Spink Group	Spink and Son Limited, our subsidiaries and associated companies.
VAT	value added tax chargeable under VAT and any similar replacement or additional tax; and
VAT Symbols	means the symbols detailing the VAT status of the Lot details of which are set out at the back of the catalogue.

2 SPINK'S ROLE AS AGENT

- 2.1 All sales undertaken by us either at auction or privately are undertaken either as agent on behalf of the Seller or from time to time, as principal if we are the owner of the Lot. Please note that even if we are acting as agent on behalf of the Seller rather than as principal, we may have a financial interest in the Lot.
- 2.2 The contract for the sale of the Lot will be between you and the Seller.
- 2.3 The Seller's sale of the Lot to you is subject to any terms and conditions, disclaimers or exclusions included with any promotional material or catalogue descriptions for the Lot, or otherwise notified to you by the Seller or us on their behalf.
- 3.4.3 If we accept a request for an expert opinion or Certificate of Authenticity we will submit the Lot to the Expert Committee. You acknowledge and accept that the length of time taken by an Expert Committee to reach an opinion will vary depending on the circumstances and in any event is beyond our control.
- 3.4.4 We will not accept a request for an extension on account of condition. Any Lot described in the catalogue as having faults or defects may not be returned even if an expert opinion or Certificate of Authenticity cites other faults or defects not included in the catalogue description, other than in the case of a Forgery.

3 BEFORE THE SALE

3.1 Examination of goods

You are strongly advised to examine personally any goods in which you are interested, before the auction takes place. Condition reports are usually available on request. We provide no guarantee to you other than in relation to Forgeries, as set out in clause 5.13 of these Terms and Conditions.

3.2 Catalogue descriptions

3.2.1 Statements by us in the catalogue or condition report, or made orally or in writing elsewhere, regarding the authorship, origin, date, age, size, medium, attribution, genuineness, provenance, condition or estimated selling price of any Lot are merely statements of opinion, and are not to be relied on as statements of definitive fact. Catalogue and web illustrations are for guidance only, and should not be relied on either to determine the tone or colour of any item. No lot shall be rejected on the grounds of inaccurate reproduction. No lot illustrated in the catalogue and online shall be rejected on the grounds of cancellation, centring, margins, perforation or other characteristics apparent from the illustration. Estimates of the selling price should not be relied on as a statement that this price is either the price at which the Lot will sell or its value for any other purpose.

3.2.2 Many items are of an age or nature which precludes their being in perfect condition and some descriptions in the catalogue or given by way of condition report make reference to damage and/or restoration. We provide this information for guidance only and the absence of such a reference does not imply that an item is free from defects or restoration nor does a reference to particular defects imply the absence of any others.

3.2.3 Other than as set out in clause 5.13, and in the absence of fraud, neither the Seller nor we, nor any of our employees or agents, are responsible for the correctness of any statement as to the authorship, origin, date, age, attribution, genuineness or provenance of any Lot nor for any other errors of description or for any faults or defects in any Lot. Every person interested should exercise and rely on his own judgment as to such matters.

3.3 Your Responsibility

You are responsible for satisfying yourself as to the condition of the goods and the matters referred to in the catalogue description.

3.4 Extensions – Stamps only

3.4.1 If you wish to obtain an expert opinion or Certificate of Authenticity on any Lot (other than a mixed Lot or Lot containing undescribed stamps) you must notify us in writing not less than forty-eight hours before the time fixed for the commencement of the first session of the sale. If accepted by us, such request shall have the same effect as notice of an intention to question the genuineness or description of the Lot for the purposes of clause 5.13 (Refund in the case of Forgery) of these Terms and Conditions and the provisions of clause 5.13 (Refund in the case of Forgery) shall apply accordingly.

3.4.2 Notice of a request for an expert opinion or Certificate of Authenticity must give the reason why such opinion is required and specify the identity of your proposed expert which will be subject to agreement by us. We reserve the right, at our discretion, to refuse a request for an expert opinion or Certificate of Authenticity including (without limitation) where the proposed expert is not known to us.

3.4.5 Should Spink accept a request for an extension under the foregoing provisions of this paragraph, the fact may be stated by the Auctioneer from the rostrum prior to the sale of the Lot.

3.4.6 It should be noted that any stamp accompanied by a Certificate of Authenticity is sold on the basis of that Certificate only and not on the basis of any other description or warranty as to authenticity. No request for an extension will be accepted on such a stamp and the return of such a stamp will not be accepted.

3.4.7 If you receive any correspondence from the Expert Committee in relation to the Lot, including but not limited to a Certificate of Authenticity, you must provide us with copies of such correspondence no later than 7 days after you receive such correspondence.

4 AT THE SALE

4.1 Refusal of admission

Our sales usually take place on our own premises or premises over which we have control for the sale, and we have the right, exercisable at our complete discretion, to refuse admission to the premises or attendance at an auction.

4.2 Registration before bidding

All bidders must be registered either by completing a registration form or creating an account online. Please be aware that we usually require buyers to present identification before making a bid at auction, undergo a credit check or provide a trade reference.

If you have not bid successfully with Spink in the past, or you are registering with us for the first time, we reserve the right to require a deposit of up to 50% of the amount you intend to spend. Such deposit will be deducted from your invoice should you be successful. If you are unsuccessful at auction, your deposit will be returned by the same means it was paid to Spink.

Some lots may be designated, prior to the auction, as "Premium Lots", which means a deposit may be required before placing a bid on the item for sale. Information will be posted on our website in such an event.

4.3 Bidding as Principal

When making a bid (whether such bids are made in person or by way of telephone bids operated by Spink, commission or online or email bids), you will be deemed to be acting as principal and will be accepting personal liability, unless it has been agreed in writing, at the time of registration, that you are acting as agent on behalf of a third party buyer acceptable to us.

4.4 Commission Bids

If you give us instructions to bid on your behalf, by using the form provided in our catalogues or via our website, we shall use reasonable endeavours to do so, provided these instructions are received not later than 24 hours before the auction. If we receive commission bids on a particular Lot for identical amounts, and at auction these bids are the highest bids for the Lot, it will be sold to the person whose bid was received first. Commission bids are undertaken subject to other commitments at the time of the sale, and the conduct of the auction may be such that we are unable to bid as requested. Since this is undertaken as a free service to prospective buyers on the terms stated, we cannot accept liability for failure to make a commission bid. You should therefore always attend personally if you wish to be certain of bidding.

- 4.5 **On-line Bidding**
We offer internet services as a convenience to our clients. We will not be responsible for errors or failures to execute bids placed on the internet, including, without limitation, errors or failures caused by (i) a loss of internet connection by either party for whatever reason; (ii) a breakdown or problems with the online bidding software and/or (iii) a breakdown or problems with your internet connection, computer or system. Execution of on-line internet bids on www.spink.com and Spink Live is a free service undertaken subject to other commitments at the time of the auction and we do not accept liability for failing to execute an online internet bid or for errors or omissions in connection with this activity.
- 4.6 **Telephone Bids**
If you make arrangements with us not less than 24 hours before the sale, we shall use reasonable endeavours to contact you to enable you to participate in bidding by telephone, but in no circumstances will we be liable to either the Seller or you as a result of failure to do so.
- 4.7 **Currency Converter**
At some auctions, a currency converter will be operated, based on the one month forward rates of exchange quoted to us by Barclays Bank Plc or any other appropriate rate determined by us, at opening on the date of the auction. Bidding will take place in a currency determined by us, which is usually sterling for auctions held in London. The currency converter is not always reliable, and errors may occur beyond our control either in the accuracy of the Lot number displayed on the converter, or the foreign currency equivalent of sterling bids. We shall not be liable to you for any loss suffered as a result of you following the currency converter.
- 4.8 **Video images**
At some auctions there will be a video screen. Mistakes may occur in its operation, and we cannot be liable to you regarding either the correspondence of the image to the Lot being sold or the quality of the image as a reproduction of the original.
- 4.9 **Bidding Increments**
Bidding generally opens below the low estimate and advances in the following order although the auctioneer may vary the bidding increments during the course of the auction. The normal bidding increments are:
- | | |
|--------------------|----------------------------------|
| Up to £100 | by £5 |
| £100 to £300 | by £10 |
| £300 to £600 | £320-£350-£380-£400 etc. |
| £600 to £1,000 | by £50 |
| £1,000 to £3,000 | by £100 |
| £3,000 to £6,000 | £3,200-£3,500-£3,800-£4,000 etc. |
| £6,000 to £10,000 | by £500 |
| £10,000 to £20,000 | by £1,000 |
| £20,000 and up | Auctioneer's discretion |
- 4.10 **Bidding by Spink**
- 4.10.1 We reserve the right to bid on Lots on the Seller's behalf up to the amount of the Reserve (if any), which will never be above the low estimate printed in the auction catalogue.
- 4.10.2 The Spink Group reserves the right to bid on and purchase Lots as principal.
- 4.10.3 Lots with this symbol (Ⓢ) indicate that a party has provided Spink with an irrevocable bid on the lot that will be executed during the sale at a value that ensures that the lot will sell. The irrevocable bidder, who may bid in excess of the irrevocable bid, will be compensated based on his bid in the event he or she is not the successful bidder or may receive a fixed fee in the event he or she is the successful bidder. If the irrevocable bidder is the successful bidder, the fixed fee for providing the irrevocable bid may be netted against the irrevocable bidder's obligation to pay the full purchase price for the lot. If the irrevocable bid is not secured until after the printing of the auction catalogue, a pre-sale announcement will be made indicating that there is an irrevocable bid on the lot.
- If you are interested in placing an irrevocable bid in an auction, please contact us at chairmanoffice@spink.com. Typically, only some of the lots with an estimate, which must exceed £100,000 or equivalent in other currencies are open to irrevocable bids.
- 4.11 **The Auctioneer's Discretion**
The auctioneer has the right at his absolute discretion to refuse any bid to advance the bidding in such manner as he may decide to withdraw or divide any Lot, to combine any two or more Lots and, in the case of error or dispute, to put an item up for bidding again.
- 4.12 **Successful Bid**
Subject to the auctioneer's discretion, the striking of his hammer marks the acceptance of the highest bid, provided always that such bid is higher than the Reserve (where applicable), and the conclusion of a contract for sale between you and the Seller.
- 4.13 **After Sale Arrangements**
If you enter into any private sale agreements for any Lot with the Seller within 60 days of the auction, we, as exclusive agents of the Seller reserve the right to charge you the applicable Buyer's Premium in accordance with these Terms and Conditions, and the Seller a commission in accordance with the terms of the Seller's agreement.
- 4.14 **Return of Lot**
- 4.14.1 Once your bid has been accepted for a Lot then you are liable to pay for that Lot in accordance with these Terms and Conditions. If there are any problems with a Lot then you must notify us within 7 days of receipt of the Lot, specifying the nature of the problem. We may then request that the Lot is returned to us for inspection. Save as set out in clause 5.13, the cancellation of the sale of any Lot and the refund of the corresponding purchase price is entirely at our sole discretion. We will not normally exercise that discretion if the Lot is not received by us in the same condition that it was in at the auction date.
- 4.14.2 No lot may be returned on account of condition if the condition was stated by a third party grading company (including, but not limited to PCGS, NGC, ANACS, ICG, PMG, WBG, Legacy Currency Grading).
- 5 **AFTER THE AUCTION**
- 5.1 **Buyer's Premium and other charges**
In addition to the Hammer Price, you must pay us the Buyer's Premium at a rate of 20% of the final Hammer price of each lot, postage charge and a fee for paying by card.
- 5.2 **Value Added Tax**
Other than in respect of Zero-rated Lots (o) VAT is chargeable on the Hammer price and the Buyer's Premium of daggered (†) and (Ω) lots at the standard rate (currently 20%), and on lots marked (x) at the reduced rate (currently 5% on the Hammer price and 20% on the Buyer's premium). VAT on Margin scheme lots (identified by the absence of any VAT symbol next to the lot number) is payable at 20% on the Buyer's premium only.
- 5.3 **VAT Refunds**
- General**
- 5.3.1 As we remain liable to account for VAT on all Lots unless they have been exported outside the EU within 3 months of the date of sale, you will generally be asked to deposit all amounts of VAT invoiced. However, if a Spink nominated shipper is instructed, then any refundable VAT will not be collected. In all other cases credits will be made when proof of export is provided. If you export the Lot yourself you must obtain shipping documents from the Shipping Department for which a charge of £50 will be made.
- 5.3.2 If you export the Lot you must return the valid proof of export certificate to us within 3 months of the date of sale. If you fail to return the proof of export certificate to us within such period and you have not already accounted to us for the VAT, you will be liable to us for the full amount of the VAT due on such Lot and we shall be entitled to invoice you for this sum.
- 5.3.3 To apply for a refund of any VAT paid, the proof of export certificate must be sent to our Shipping Department clearly marked 'VAT Refund' within 3 months of the date of sale. No payment will be made where the total amount of VAT refundable is less than £50 and Spink will charge £50 for each refund processed.
- VAT Refunds - Buyers from within the EU**
- 5.3.4 VAT refunds are available on the Hammer Price and Buyer's Premium of Daggered (†) and Investment Gold (g) Lots. You must certify that you are registered for VAT in another EU country and that the Lot is to be removed from the United Kingdom within 3 months of the date of sale.
- 5.3.5 Where an EU buyer purchases a Lot on which import VAT has been charged, no refund of VAT is available from us. It may be possible to apply directly for a refund on form VAT 65 to HM Revenue & Customs Overseas Repayment Section, Londonderry.
- VAT Refunds - Buyers from outside the EU**
- 5.3.6 Where a Lot is included within the Auctioneers' Margin Scheme and evidence of export from the EU is produced within 3 months of the date of sale, the VAT on Buyer's Premium may be refunded.
- 5.3.7 Where the Lot is marked as a Daggered (†) Lot the VAT charged on the Hammer Price may be refunded where evidence of export from the EU is produced within 3 months of the date of sale. A refund of VAT charged on the Buyer's Premium can also be made on receipt of proof of business as a collectibles dealer.
- 5.3.8 Where the Lot is marked as an Omega (Ω) Lot or an Import VAT (x) Lot and evidence of export from the EU is produced within 3 months of the date of sale, the VAT charged on both the Hammer Price and Buyer's Premium may be refunded. Where required, we can advise you on how to export such Lots as a specific form of export evidence is required. Where we advise you on the export of the Lots, please be aware that the ultimate responsibility in respect of obtaining a valid proof of export certificate will lie with you and we will not be responsible for your failure to obtain such certificate.
- 5.3.9 Lot marked as Investment Gold (g) is exempt from VAT on Hammer price. A refund of VAT charged on the Buyer's Premium can be made on receipt of proof of business as a collectibles dealer and where evidence of export from the EU is produced within 3 months of the date of sale.
- 5.4 **Payment**
- 5.4.1 You must provide us with your full name and permanent address and, if so requested, details of the bank from which any payments to us will be made. You must pay the full amount due (comprising the Hammer Price, the Buyer's Premium and any applicable VAT) within seven days after the date of the sale. This applies even if you wish to export the Lot and an export licence is (or may be) required.
- 5.4.2 You will not acquire title to the Lot until all amounts due have been paid in full. This includes instances where special arrangements were made for release of Lot prior to full settlement.
- 5.4.3 Payment should be made in sterling by one of the following methods:
- Direct bank transfer to our account details of which are set out on the invoice. All bank charges shall be met by you. Please ensure that your client number is noted on the transfer.
 - By cheque or bank draft made payable to Spink and Son Ltd and sent to Spink at 69 Southampton Row, Bloomsbury, London WC1B 4ET. Please note that the processing charges for payments made by cheques or bank drafts drawn on a non-U.K bank shall be met by you. Please ensure that the remittance slip printed at the bottom of the invoice is enclosed with your payment.

- (iii) By Visa or Mastercard. All Corporate cards regardless of origin and Consumer debit and credit cards issued outside the EU are subject to a fee of 3%. For all card payments there are limits to the amounts we will accept depending on the type of card being used and whether or not the cardholder is present.
- 5.4.4 Payments should be made by the registered buyer and not by third parties, unless it has been agreed at the time of registration that you are acting as an agent on behalf of a third party.
- 5.5 Invoices**
Invoices may consist of one or more pages and will show: Zero rated Lots (o); no symbol Lots sold under the Auctioneers' Margin Scheme; Lots marked (g) special scheme Investment Gold; Daggered Lots (†), imported Lots marked (x) and (Ω), (e) Lots with Zero rated hammer for EU VAT registered buyers.
- 5.6 Collection of Purchases**
5.6.1 Unless specifically agreed to the contrary, we shall retain lots purchased until all amounts due to us, or to the Spink Group, have been paid in full. Buyers will be required to pay for their lots when they wish to take possession of the same, which must be within 7 days of the date of the sale, unless prior arrangements have been made with Spink. Without prior agreement, lots will not be released until cleared funds are received with regard to payments made by cheque.
5.6.2 Unless we notify you to the contrary, items retained by us will be covered in accordance with our policy which is available for inspection at our offices from the date of sale for a period of seven days or until the time of collection, whichever is sooner. After seven days or from the time of collection, whichever is the earlier, the Lot will be entirely at your risk.
5.6.3 Our policy will not cover and we are unable to accept responsibility for damage caused by woodworm, changes in atmospheric conditions or acts of terrorism.
- 5.7 Notification**
We are not able to notify successful bidders by telephone. While Invoices are sent out by email or mail after the auction we do not accept responsibility for notifying you of the result of your bid. You are requested to contact us by telephone or in person as soon as possible after the auction to obtain details of the outcome of your bids to avoid incurring charges for late payment.
- 5.8 Packing and handling**
5.8.1 We shall use all reasonable endeavours to take care when handling and packing a purchased Lot but remind you that after seven days or from the time of collection, whichever is sooner, the Lot is entirely at your risk. Our postage charges are set out at the back of the catalogue.
5.8.2 It is the responsibility of the Buyer to be aware of any Import Duties that may be incurred upon importation to the final destination. Spink will not accept return of any package in order to avoid these duties. The onus is also on the Buyer to be aware of any Customs import restrictions that prohibit the importation of certain collectibles. Spink will not accept return of the Lot(s) under these circumstances. Spink will not accept responsibility for Lot(s) seized or destroyed by Customs.
5.8.3 If the Buyer requires delivery of the Lot to an address other than the invoice address this will be carried out at the discretion of Spink.
- 5.9 Recommended packers and shippers**
If required our shipping department may arrange shipment as your agent. Although we may suggest carriers if specifically requested, our suggestions are made on the basis of our general experience of such parties in the past and we are not responsible to any person to whom we have made a recommendation for the acts or omissions of the third parties concerned.
- 5.10 Remedies for non-payment or failure to collect purchases**
5.10.1 If you fail to make payment within seven days of your stipulated payment date set out in your invoice, we shall be entitled to exercise one or more of the following rights or remedies:
5.10.1.1 to charge interest at the rate of 2% per month compound interest, calculated on a daily basis, from the date the full amount is due;
5.10.1.2 to set off against any amounts which the Spink Group may owe you in any other transaction the outstanding amount remaining unpaid by you;
5.10.1.3 we may keep hold of all or some of your Lots or other property in the possession of the Spink Group until you have paid all the amounts you owe us or the Spink Group, even if the unpaid amounts do not relate to those Lots or other property. Following fourteen days' notice to you of the amount outstanding and remaining unpaid, the Spink Group shall have the right to arrange the sale of such Lots or other property. We shall apply the proceeds in discharge of the amount outstanding to us or the Spink Group, and pay any balance to you;
5.10.1.4 where several amounts are owed by you to the Spink Group in respect of different transactions, to apply any amount paid to discharge any amount owed in respect of any particular transaction, whether or not you so direct;
5.10.1.5 to reject at any future auction any bids made by you or on your behalf or obtain a deposit from you before accepting any bids.
5.10.2 If you fail to make payment within thirty-five days, we shall in addition be entitled:
5.10.2.1 to cancel the sale of the Lot or any other item sold to you at the same or any other auction;
5.10.2.2 to arrange a resale of the Lot, publicly or privately, and, if this results in a lower price being obtained, claim the balance from you together with all reasonable costs including a 20% seller's commission, expenses, damages, legal fees, commissions and premiums of whatever kind associated with both sales or otherwise, incurred in connection with your failure to make payment;
5.10.2.3 when reselling the Lot, place a notice in our catalogue stating that you successfully purchased the Lot at auction but have subsequently failed to pay the Hammer Price of the Lot; or
5.10.2.4 take any other appropriate action as we deem fit.
5.10.3 If you fail to collect within fourteen days after the sale, whether or not payment has been made, you will be required
5.10.3.1 to pay a storage charge of £2 per item per day plus any additional handling cost that may apply.
5.10.3.2 you will not be entitled to collect the Lot until all outstanding charges are met, together with payment of all other amounts due to us.
- 5.11 Use of Default Information**
If you fail to make payment for a Lot in accordance with these Terms and Conditions:
5.11.1 we reserve the right to refuse you the right to make bids for any future auction irrespective of whether previous defaults have been settled; and
5.11.2 you acknowledge that we may (as necessary for our legitimate interests those of other auctioneers and live bidding platforms in referencing customers and avoiding customer defaults) disclose details of such default to other auctioneers and live bidding platforms, which will include your name, address, nature of the default and the date of the default.
Auctioneers or live bidding platforms who receive details of the default may rely on such information when deciding whether to enter into a transaction with you in the future.
- 5.12 Export Licence**
5.12.1 If required we can, at our discretion, advise you on the detailed provisions of the export licensing regulations. Where we advise you in relation to export licensing regulations the ultimate responsibility in respect of any export will lie with you and we will not be responsible for your failure to apply for any necessary licences.
5.12.2 If the Lot is going to be hand carried by you, you may be required to produce a valid export licence to us or sign a waiver document stating that a licence will be applied for.
5.12.3 You should always check whether an export licence is required before exporting. Export licences are usually obtained within two or three weeks but delays can occur.
5.12.4 Unless otherwise agreed by us in writing, the fact that you wish to apply for an export licence does not affect your obligation to make payment within seven days nor our right to charge interest on late payment.
5.12.5 If you request that we apply for an export licence on your behalf, we shall be entitled to recover from you our disbursements and out of pocket expenses in relation to such application, together with any relevant VAT.
5.12.6 We will not be obliged to rescind a sale nor to refund any interest or other expenses incurred by you where payment is made by you despite the fact that an export licence is required.
- 5.13 Refund in the case of Forgery**
5.13.1 A sale will be cancelled, and the amount paid refunded to you if a Lot (other than a miscellaneous item not described in the catalogue) sold by us proves to have been a Forgery. We shall not however be obliged to refund any amounts if either (a) the catalogue description or saleroom notice at the auction date corresponded to the generally accepted opinion of scholars or experts at that time, or fairly indicated that there was a conflict of opinions, or (b) it can be demonstrated that the Lot is a Forgery only by means of either a scientific process not generally accepted for use until after publication of the catalogue or a process which at the date of the auction was unreasonably expensive or impracticable or likely to have caused damage to the Lot. Furthermore, you should note that this refund can be obtained only if the following conditions are met:
5.13.1.1 you must notify us in writing, within seven days of the receipt of the Lot(s), that in your view the Lot concerned is a Forgery;
5.13.1.2 you must then return the item to us within fourteen days from receipt of the Lot(s), in the same condition as at the auction date; and
5.13.1.3 as soon as possible following return of the Lot, you must produce evidence satisfactory to us that the Lot is a Forgery and that you are able to transfer good title to us, free from any third party claims.
5.13.1.4 you must provide to us all evidence obtained by you that a Lot is a Forgery no later than 7 days after you receive such evidence.
5.13.2 In no circumstances shall we be required to pay you any more than the amount paid by you for the Lot concerned and you shall have no claim for interest.
5.13.3 The benefit of this guarantee is not capable of being transferred, and is solely for the benefit of the person to whom the original invoice was made out by us in respect of the Lot when sold and who, since the sale, has remained the owner of the Lot without disposing of any interest in it to any third party.
5.13.4 We shall be entitled to rely on any scientific or other process to establish that the Lot is not a Forgery, whether or not such process was used or in use at the date of the auction.

6 LIABILITY

Nothing in these Terms and Conditions limits or excludes our liability for:

- 6.1 death or personal injury resulting from negligence; or
- 6.2 any damage or liability incurred by you as a result of our fraud or fraudulent misrepresentation.

7 USE OF YOUR PERSONAL INFORMATION

- 7.1 We will use the personal information you provide to us as set out in our privacy notice (available at <https://spink.com/privacy-policy>) and in particular to:
 - 7.1.1 process the bids you make on Lots (whether successful or otherwise) and other auction related services we provide;
 - 7.1.2 process your payment relating to a successful purchase of a Lot;
 - 7.1.3 arrange for delivery of any Lot you purchase, which will include passing your details to shipping providers and, on overseas deliveries, to customs where they make enquiries regarding the Lot;
 - 7.1.4 inform you about similar products or services that we provide, but you may stop receiving these at any time by contacting us.
- 7.2 In accordance with clause 4.2, we may pass your information to credit reference agencies in order to obtain credit checks from them, and they may keep a record of any search that they do.
- 7.3 In accordance with clause 5.11, where you default on making payment for a Lot in accordance with these terms and conditions we may disclose details of such default to other auctioneers and live bidding platforms.
- 7.4 We are also working closely with third parties (including, for example, other auctioneers and live bidding platforms) and may receive information about you from them.
- 7.5 Where you provide us with personal information about other individuals, you must ensure that your provision of that information is compliant with applicable data protection law.

8 COPYRIGHT

- 8.1 We shall have the right (on a non-exclusive basis) to photograph, video or otherwise produce an image of the Lot. All rights in such an image will belong to us, and we shall have the right to use it in whatever way we see fit.
- 8.2 The copyright in all images, illustrations and written material relating to a Lot is and shall remain at all times our property and we shall have the right to use it in whatever way we see fit. You shall not use or allow anyone else to use such images, illustrations or written material without our prior written consent.

9 VAT

You shall give us all relevant information about your VAT status and that of the Lot to ensure that the correct information is printed in the catalogues. Once printed, the information cannot be changed. If we incur any unforeseen cost or expense as a result of the information being incorrect, you will reimburse to us on demand the full amount incurred.

10 NOTICES

All notices given under these Terms and Conditions may be served personally, sent by 1st class post, or faxed to the address given to the sender by the other party. Any notice sent by post will be deemed to have been received on the second working day after posting or, if the addressee is overseas, on the fifth working day after posting. Any notice sent by fax or served personally will be deemed to be delivered on the first working day following despatch.

11 ADDITIONAL PROVISIONS

The following provisions of this clause 11 shall apply only if you are acting for the purposes of your business.

11.1 Limitation of Liability

Subject to clause 6, we shall not be liable, whether in tort (including for negligence) or breach of statutory duty, contract, misrepresentation or otherwise for any:

- 11.1.1 loss of profits, loss of business, depletion of goodwill and/or similar losses, loss of anticipated savings, loss of goods, loss of contract, loss of use, loss of corruption of data or information; or
- 11.1.2 any special, indirect, consequential or pure economic loss, costs, damages, charges or expenses.

11.2 Severability

If any part of these Terms and Condition is found by any court to be invalid, illegal or unenforceable, that part may be discounted and the rest of the conditions shall continue to be valid and enforceable to the fullest extent permitted by law.

11.3 Force majeure

We shall have no liability to you if we are prevented from, or delayed in performing, our obligations under these Terms and Conditions or from carrying on our business by acts, events, omissions or accidents beyond our reasonable control, including (without limitation) strikes, lock-outs or other industrial disputes (whether involving our workforce or the workforce of any other party), failure of a utility service or transport network, act of God, war, riot, civil commotion, malicious damage, compliance with any law or governmental order, rule, regulation or direction, accident, breakdown of plant or machinery, fire, flood, storm or default of suppliers or subcontractors.

11.4 Waiver

11.4.1 A waiver of any right under these Terms and Conditions is only effective if it is in writing and it applies only to the circumstances for which it is given. No failure or delay by a party in exercising any right or remedy under these Terms and Conditions or by law shall constitute a waiver of that (or any other) right or remedy, nor preclude or restrict its further exercise. No single or partial exercise of such right or remedy shall preclude or restrict the further exercise of that (or any other) right or remedy.

11.4.2 Unless specifically provided otherwise, rights arising under these Terms and Conditions are cumulative and do not exclude rights provided by law.

11.5 Law and Jurisdiction

11.5.1 These Terms and Conditions and any dispute or claim arising out of or in connection with them or their subject matter, shall be governed by, and construed in accordance with, the law of England and Wales.

11.5.2 The parties irrevocably agree that the courts of England and Wales shall have exclusive jurisdiction to settle any dispute or claim that arises out of, or in connection with, Terms and Conditions or their subject matter.

Postal Charges

Prices for all items including postage and packaging

Invoice Value	UK	EU	Rest of the World
Up to £1,500	£12	£18	£25
Up to £10,000	£20	£40	£50
Above £10,001	£30	£60	£75

Shipments of more than 2kg or volumetric measurement of more than 2kg have to be sent by courier. Certain countries may incur extra charge when courier services are required by our insurance policy. For lots sent by courier please contact Auctionteam@spink.com for calculation of any further relevant cost in addition to the above charges.

Value Added Tax (VAT)

Charging of (VAT) at Auction

The information shown on this page sets out the way in which Spink intends to account for VAT.

i. Auctioneers' Margin Scheme

1. Where possible, we will offer Lots for sale under the Auctioneers' Margin Scheme. Such Lots can be identified by the absence of any VAT symbol next to the Lot number in the catalogue and will not be subject to VAT on the Hammer Price.
2. Where Lots are sold using the Auctioneers' Margin Scheme to UK VAT-registered businesses, the VAT on Buyers' Premium is not recoverable as input tax. Upon request on sale day, we will issue invoices that show VAT separately on both the Hammer Price and the Buyer's Premium. This will enable VAT-registered businesses to recover the VAT charged as input tax, subject to the normal rules for recovering input tax.

ii. Zero-Rated Lots

Limited Categories of goods, such as books, are Zero-rated (o) for VAT in the United Kingdom. Such Lots are offered under the Auctioneers' Margin Scheme. In these circumstances no VAT will be added to the Buyer's premium.

iii. Daggedged Lots

Lots which are Daggedged (†) in the catalogue are subject to VAT at 20% on both the Hammer Price and the Buyer's Premium.

iv. Imported and Omega Lots

Lots which are marked (x) in the catalogue are subject to VAT at 5% on the Hammer price plus 20% on the Buyer's premium. Lots which bear the Omega symbol (Ω) are subject to VAT at 20% on the Hammer Price and on the Buyer's Premium. This VAT is payable on items imported from outside the EU. In these cases we have used a temporary importation procedure, which in effect means that the point of importation is deferred until the Lot has been sold. At this point the Buyer is treated as the importer and is liable to pay the import VAT due. We will collect the VAT from you and pay it to HM Customs and Excise on your behalf.

v. Investment Gold Lots

Lots marked (g) in the catalogue are exempt from VAT on the Hammer Price and are subject to VAT at 20% on the Buyer's Premium. A refund of VAT charged on the Buyer's Premium can also be made on receipt of proof of business as a collectibles dealer outside of the EU.

SPINK

LONDON
1666

SALE CALENDAR 2020

STAMPS

14-15 April	The Philatelic Collectors' Series Sale	London	20026
16 April	British Borneo Stamps and Covers	London	20027
29 April	The Gary Diffen Collection of Australian Colonies Errors Part 1 - New South Wales, Queensland, South Australia	London	20030
29 April	The Lugano Collection of Venezuela	London	20038
4-19 May	Stamps and Covers of Great Britain e-Auction	London	20135
13 May	Stamps and Covers of Great Britain	London	20032
13 May	The "Libra" Collection of the 1961 Decimal Surcharges of Basutoland, Bechuanaland and Swaziland	London	20031
13 June	Stamps and Covers of South East Asia	Singapore	20033
2-16 July	Stamps and Covers of the World e-Auction	London	20136
14 July	The Philatelic Collectors' Series Sale	London	20035
15 July	Specialised Stamps of the British Empire	London	20012
15 July	Historical Documents, Postal History and Autographs	London	20025

COINS

5-20 May	Spink Numismatic e-Circulars: Toy Money, Tokens and Tickets	London	20122
7-8 May	Banknotes, Bonds & Shares and Coins of China and Hong Kong	Hong Kong	CSS48
9 June	The Numismatic Collector's Series Sale	New York	360
10-17 June	The Numismatic Collector's Series e-Auction	New York	361

BANKNOTES

7 April	Prof. Yih-Tzong Hsu Collection of World Banknotes	London	20022
7-8 April	World Banknotes	London	20008
8 April	Charity Auction of Bank of England Notes	London	20036
6 May	British Banknotes	London	20015
7-8 May	Banknotes, Bonds & Shares and Coins of China and Hong Kong	Hong Kong	CSS48

MEDALS

22-23 April	Orders, Decorations and Medals	London	20001
-------------	--------------------------------	--------	-------

BONDS & SHARES

16 April-5 May	Bonds and Share Certificates of the World e-Auction	London	20118
7-8 May	Banknotes, Bonds & Shares and Coins of China and Hong Kong	Hong Kong	CSS48

HISTORICAL DOCUMENTS

9 June	The Numismatic Collector's Series Sale	New York	360
10-17 June	The Numismatic Collector's Series e-Auction	New York	361
15 July	Historical Documents, Postal History and Autographs	London	20025

LIFESTYLE COLLECTABLES

May	Luxury Handbags and Accessories e-Auction	London	SHA05
-----	---	--------	-------

The above sale dates are subject to change

Spink offers the following services:

- VALUATIONS FOR INSURANCE AND PROBATE FOR INDIVIDUAL ITEMS OR WHOLE COLLECTIONS -
- SALES ON A COMMISSION BASIS EITHER OF INDIVIDUAL PIECES OR WHOLE COLLECTIONS -



£25



BY APPOINTMENT TO
HER MAJESTY THE QUEEN
MEDALLIST & PHILATELIST
SPINK & SONS LTD LONDON



BY APPOINTMENT TO
HER MAJESTY THE QUEEN
MEDALLIST & PHILATELIST
SPINK & SONS LTD LONDON

SPINK

WHERE HISTORY IS VALUED

FOUNDED
1666

STAMPS COINS BANKNOTES MEDALS BONDS & SHARES AUTOGRAPHS BOOKS
WINE & SPIRITS HANDBAGS COLLECTIONS ADVISORY SERVICES SPECIAL COMMISSIONS

69 Southampton Row, Bloomsbury, London WC1B 4ET
www.spink.com