
THE 'LIONHEART' COLLECTION OF GREAT BRITAIN AND BRITISH EMPIRE - PART XIII



SPINK

WHERE HISTORY IS VALUED

1 OCTOBER 2020
LONDON



THE 'LIONHEART' COLLECTION OF GREAT BRITAIN AND BRITISH EMPIRE - PART XIII

Sale Venue:

The Royal Philatelic Society London

15 Abchurch Lane

2nd Floor

London

EC4N 7BW

tel +44 (0)20 7563 4005 fax +44 (0)20 7563 4037

Vat No: GB 791627108



Sale Details | Thursday 1 October 2020 at 2.00 p.m.

When sending commission bids or making enquiries,
this sale should be referred to as **LIONHEART - 20013**

Viewing of Lots | At RPSL London (with certain restrictions)
Tuesday 29 September 2020 at 10.00 a.m. – 5.00 p.m.
Wednesday 30 September 2020 at 10.00 a.m. – 5.00 p.m.
| Private viewing by appointment only

Live platform

SPINK LIVE

StampAuction
NETWORK

Your Specialists for this Sale



Josh Barber
jbarber@spink.com
+44 (0)20 7563 4080



Axel Kendrick
akendrick@spink.com
+44 (0)20 7563 4120

Bids

Benedetta Fusco
Dora Szigeti
auctionteam@spink.com
+44 (0)20 7563 4108/4005
fax +44 (0)20 7563 4037

Internet Bidding

Michael Lewis
support@spink.com
+44 (0)20 7563 4090

Payment Enquiries

Veronica Morris
creditcontrol@spink.com
+44 (0)20 7563 4018

VAT Enquiries

John Winchcombe
jwinchcombe@spink.com
+44 (0)20 7563 4101

The Spink Environment Commitment: Paper from Sustainable Forests and Clean Ink

Spink has a long history of preserving not only collectables but our planet, too. We are proud to ensure that our policy of sustainability and conservation keeps up with Spink's growth, helping improve the environment for new generations of collectors.

We insist that our printers source all paper used in the production of Spink catalogues from FSC and/or PEFC suppliers and use non-hazardous inks. We also ask they hold the environmental standard ISO 14001.

Spink recycle all ecological material used on our premises and we encourage you to recycle your catalogue once you have finished with it.

Front Cover Illustrations: 631, 656, 671, 729, 764, 791, 797 Back Cover Illustration: 759

Inside Front Cover Illustration: 691, Inside Back Cover Illustration: 767

Group Chairman and CEO

Olivier D. Stocker

Director

Tim Hirsch FRPSL

Chief Financial Officer

Alison Bennet

Head of EMEAMira Adusei-Poku
mpoku@spink.com**Global Head of Banknotes and Bonds**Kelvin Cheung
kcheung@spink.com**Specialists****Stamps**Tim Hirsch FRPSL
Iain Murphy
David Parsons
Nick Startup
Neill Granger FRPSL
Dominic Savastano
Josh Barber
Thomas Fell
Axel Kendrick
Ian Shapiro (Consultant)
Guido Craveri (Consultant)
Christopher Green
George Yue (Consultant)
Alan Ho**Bonds & Shares**

Mike Veissid (Consultant)

BooksEmma Howard
Olivia Rae Marshall
Nik Von Uexkull**Client & Auction Management**Geoff Anandappa (Consultant)
Dora Szigeti
Nik Von Uexkull
Benedetta Fusco
John Winchcombe
Samantha Lanevi
Newton Tsang
Katrina Chan**PR & Marketing**Rita Ariete
Alzbeta Lanova**Chief Customer Officer**

Rita Ariete

Head of AmericasCharles J Blane
cblane@spink.com**Coins**Henrik Berndt
Richard Bishop
Tim Robson
Gregory Edmund
Lawrence Sinclair (Consultant)
Barbara Mears
Greg Cole
Kin Choi Cheung
Paul Pei Po Chow
Joseph Lam**Historical Documents**Thomas Fell
Neill Granger FRPSL
Ian Shapiro (Consultant)
Greg Cole**Finance**Alison Bennet
Sue Pui
Marco Fiori
Mina Bhagat
Dennis Muriu
Veronica Morris
Nicholas Waring**Representatives For Australia**Peter Griffiths - pgriffiths@spink.com
Michael R. Downey - mdowney@spink.com**Representative For Canada**


Timothy J. Stewart - tstewart@spink.com

Representative For Japan日本での弊社オークションへの出品・参加に関してのお問い合わせ
Alan Ho - japan@spink.com**Representative For South Africa**

Andrew Kennedy - akennedy@spink.com

www.spink.com

@SpinkandSon

 #Spink_Auctions Spink_auctions Spinkauctions Spink_auctions**Chief Operating Officer**

Mira Adusei-Poku

Head of Asia-PacificSue Pui
spui@spink.com**Banknotes**Barnaby Faull
Elaine Fung
Arnas Savickas
Greg Cole
Paul Pei Po Chow**Orders, Decorations & Medals**Marcus Budgen
Greg Cole**Wine & Spirits**

George Koutsakis

Special CommissionsIan Copson
Robert Wilde-Evans**IT & Administration**Michael Lewis
Liz Cones
Slawomir Kolsut
Newton Tsang
Jacqueline Wong**Spink UK**69 Southampton Row
Bloomsbury
London
WC1B 4ET
Email:
conciierge@spink.com
Tel: +44 (0)20 7563 4000
Fax: +44 (0)20 7563 4066**Spink USA**145 W. 57th St.
18th Floor
New York, NY
10019
Email:
usa@spink.com
Tel: +1 646 941 8664
Fax: +1 646 941 8686**Spink China**4/F and 5/F
Hua Fu Commercial
Building
111 Queen's Road West
Sheung Wan
Hong Kong
Email:
china@spink.com
Tel: +852 3952 3000
Fax: +852 3952 3038**Spink Asia**Registered at:
50 Raffles Place
#17-01 Singapore Land
Tower
Singapore 048623
Email:
singapore@spink.com**Spink Switzerland**Via Livio 8
6830 Chiasso
Switzerland
Email:
switzerland@spink.com
Tel: +41 91 911 62 00
Fax: +41 91 922 20 52

OFFICIAL SPONSOR OF VIRTUAL STAMPEX INTERNATIONAL 2020



THE WORLD'S FIRST **VIRTUAL**
INTERNATIONAL STAMP SHOW!

STAMPEX 2020 AUCTIONS

**THE GARY DIFFEN COLLECTION OF
AUSTRALIAN COLONIES ERRORS - PART 2**

1 October | 10 AM

**THE 'LIONHEART' COLLECTION OF GREAT BRITAIN AND BRITISH
EMPIRE - PART XIII**

1 October | 2 PM

THE 'DOYEN' COLLECTION

3 October | 10 AM

VIRTUAL EXHIBITION 2020

01 - 03 OCTOBER

SIGN UP AT: [STAMPEX.VFAIRS.COM](https://stampeX.vfairs.com)

MEET OUR SPECIALISTS AND ENJOY STAMPEX IN THE NEW FORMAT

Follow us on social media



Extensions

Prospective buyers who wish to obtain an expert opinion on any lot (other than a mixed lot or lot containing undescribed stamps) are requested to notify Spink in writing not less than forty-eight hours before the time fixed for the commencement of the first session of the sale. If accepted by Spink, such request shall have the same effect as notice of an intention to question the authenticity of the lot for the purposes of Condition 3.4 of our Terms and Conditions for Buyers.

Notice of a request for an expert opinion must give the reason why such is required and specify the identity of the expert which will be subject to the agreement of Spink. All lots for which Certificates of Authenticity are desired must be submitted by Spink to the Expert Committee for choice.

Buyers are reminded that any lot(s) purchased “on extension” are subject to payment in accordance with our normal Terms & Conditions of Business. Settlement of any lots on extension should be made at the time of invoice payment. Overdue accounts are subject to interest charges.

Extensions requested on account of condition will not be accepted for expert opinions. Any Lot described as having faults or defects may not be returned should a certificate cite other faults or defects not included in the catalogue description.

Should Spink accept a request for an extension under the foregoing provisions of this paragraph, the fact may be stated by the Auctioneer from the rostrum prior to the sale of the lot.

It should be noted that any stamp accompanied by a Certificate of Authenticity is sold on the basis of that Certificate only and not on the basis of any other. No request for an extension will be accepted on such a stamp and the return of such a stamp will not be accepted.

Notes Concerning Descriptions

GUM: Original gum should be expected on unused stamps where appropriate, unless stated otherwise in the description:

mint	unused with original gum showing slight disturbance caused by previous hinge, which may be present in part or entirely removed
part original gum	unused with original gum significantly disturbed or heavily hinged
unmounted mint	original gum as issued
unused	without gum

COVERS: Should be expected to have minor nicks and tears usually from opening. Folded letters or covers normally have one or two file folds. These are not described unless of an exceptional nature and are not grounds for return.

entire letter	complete as sent with comments still attached to the outer address portion
entire	the outer portion of a folded letter but without contents
cover	an envelope

Symbols and Abbreviations

⊛	unmounted mint	d.s.	datestamp
★	unused	h.s.	handstamp
○	used	Ⓐ	air mail
⊞	block of four	Ⓢ	specimen
⊞	block larger than four	Ⓒ	cancelled
⊞	used on cover, entire letter, etc.	Ⓔ	essay
△	on piece	Ⓟ	proof
var.	variety, varieties	F	forgery
cat.	catalogue, catalogue value	R	reprint
c.d.s.	circular datestamp		

References

Catalogue values and numbers are those taken from the latest available edition.

The use of Gibbons Specialised catalogues in Great Britain sales is clearly indicated. Where other catalogues are used they are mentioned by name.

Buyers are reminded that payment must be made within seven days from the date of sale (condition 5.4.1), and interest will be added for overdue accounts (condition 5.10.1.1).

Please note charges for credit card payments (condition 5.4.3(iii)).

Buyers are reminded that if they default on a successful bid that details relating to such default may be shared with other auction houses and live bidding platforms (condition 5.11).

Note: All buyers must read the notes concerning requests for Extensions printed on page 4 of this catalogue.

The Terms of that notice must be complied with fully under all circumstances.

Please note that 'Spink Live' is running on an improved on-line bidding platform, which is accessible through www.spink.com and also as a SpinkLive app available for download from the App Store.

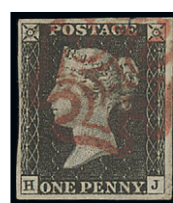
You can bid online free of charge.

THURSDAY 1 OCTOBER 2020

Commencing at 2.00 p.m.

GREAT BRITAIN

1840 One Penny Black



501

502

x501 ○

Plate 1b PG, large margins all around and cancelled by a light crisp strike of red Maltese Cross; Plate 1b QG, good to large margins and cancelled by two strikes of Maltese Cross in red and Plate 2 FF good to large margins cancelled by fairly central strike of Maltese Cross in red; an attractive trio. S.G. 2, £1,275

£300-400

x502 ○

Plate 2 HJ, good to large margins and cancelled by very crisp strike of **Maltese Cross in magenta**, very fresh; light corner crease not affecting the fine appearance. S.G. 2 £3,000

£500-700



503



504

x503 ○

Plate 4 DA, irregularly cut from the sheet with large to huge margins, part of the adjoining stamp showing to right and part of the sheet margin showing to left, cancelled by red Maltese Cross and Plate 8 QC, good to large margins cancelled by light central strike of Maltese Cross in black. S.G. 2, £950

£200-300

x504 ①

1841 1d. red-brown, Plate 136 Imprimatur lettered AL, attractive example from the upper right of the sheet with plate number and inscription "...ve the Cement", unused without gum as always; hinged at upper margin; fine

£400-600

Great Britain - *contd.*



505

x505 ☒

1864-79 1d. lake-red Plate 96 **imperforate** tied to front by Birmingham c.d.s. of 1865 (23.2) and '75' barred oval; vertical crease through stamp, nevertheless rare. S.G. 44a, £3,200

£250-350

1847-54 Embossed Issue



506



507



508

x506 ©

10d. brown, overprinted 'SPECIMEN', large margins and part original gum; a couple of insignificant thin spots. S.G. 57s, £3,000

£500-700

x507 ★

10d. brown, unused with generally good margins, just touching at right, regummed and with an insignificant corner crease; an attractive example of this scarce unused stamp. B.P.A. Certificate (2013). S.G. 57, £11,500

£500-700

x508 ★

6d. purple, variety **watermark inverted and reversed**, an unused example with clear margins on three sides and just touching at right, part original gum; fine. B.P.A. Certificate (2013). S.G. 60wi, £19,500

£1,000-1,500

1867-83 Watermark Maltese Cross



509



510



511



512

- x509 ○ 10/- greenish grey, Plate 1, HA, cancelled by crisp 'ARGYLL STREET GLASGOW' c.d.s.; short perfs at top. S.G. 128, £3,200 £250-300
- x510 ○ 10/- greenish grey, Plate 1, BJ well-centred and cancelled by crisp strike of Paisley c.d.s. for 1882 (26.4); fine, signed Calves. S.G. 128, £3,200 £500-700
- x511 ○ £1 brown-lilac, HF, cancelled by 'DUBLIN SORTING OFFICE' c.d.s, fairly well-centred and fine. S.G. 129, £4,500 £600-700
- x512 ○ £1 brown-lilac, Plate 1, FI, cancelled by 'LONDON SOUTH WESTERN OFFICE' c.d.s. for 1882 (4.2) and registration crayon cross in red. S.G. 129, £4,500 £500-700

1867-83 Watermark Anchor, White Paper



513

- x513 ★ 5/- rose, Plate 4, FA unused with part original gum, a well-centred example; lightly soiled otherwise fine. R.P.S. Certificate (1988). S.G. 134, £28,000 £3,000-5,000



514

- x514 ○ £1 brown-lilac, Plate 1, DG, a well-centred example cancelled by central strike of 'ARGYLL/GLASGOW' c.d.s for 1883 (30.10); very fine and scarce thus. Signed Pfenniger and with Ceremuga Certificate (2018). S.G. 136, £7,000 £1,000-1,500

Great Britain, 1867-83 Watermark Anchor, White Paper - *contd.*



515

x515 ©

£5 orange overprinted 'SPECIMEN' type 9, part original cracked gum; a few light gum wrinkles in places and some very light soiling. Rare. R.P.S. Certificate (2018). S.G. J128t, £4,500

£700-900



516

x516 ★ B

1873-80 6d. grey, Plate 17, GA-HD block of eight with wing-margin at right; large part original gum, the lower strip of four unmounted, diagonal crease affecting this strip and a few short perfs. A rare multiple, S.G. 147, £7,600

£800-1,000



517

x517 ★

1883-84 White Paper, Watermark Anchor 10/- ultramarine, NA, part original gum with some paper adhesion, slightly soiled. S.G. 183, £2,250

£300-400



518

x518 ★

1883-84 Watermark Three Imperial Crowns, £1 brown-lilac, MC, large part original gum; two vertical creases not affecting the fine and fresh appearance. Rare. B.P.A. Certificate (1979). S.G. 185, £28,000

£3,000-4,000



Ex 519

Ex 520

x519 ©

1883-84 Watermark Imperial Crown ½d. to 1/- set of ten, each overprinted 'SPECIMEN' type 9, large part original gum; a few light tone spots on a few values, otherwise fine. S.G. 187s-196s, £1,790

£300-500

x520 ★

1883-84 Watermark Imperial Crown ½d. to 1/- set of ten, part original gum, some with slight gum disturbance, otherwise fine and fresh. S.G. 187-196, £5,000

£800-1,000



521

x521 ★

1887-1900 Jubilee £1 green, NA, large part original gum; light natural gum bend, fine and fresh appearance. Scarce. S.G. 212, £3,500

£700-800

x522 ○

1902-51 group of used high values including 1902-10 2/6d. (10 including a pair) 5/- (5) and 10/- (2) 1939-48 10/- dark blue (2 blocks of four and 3 singles) and £1 brown (3), 1948 Silver Wedding £1 marginal, 1951 2/6d. (3), 5/- (5 including a pair), 10/- (3) and £1 (4); mixed condition, most good to fine

£150-250



523

x523 ©

1913 Waterlow £1 green, overprinted 'SPECIMEN' type 26, a well-centred example with large part original gum. S.G. N72t, £3,250

£600-800

Great Britain - *contd.*

Official Stamps

The 'V.R.' Official



524

- x524 ★ 1840 1d. black, GD with clear margins, prepared for use but not issued, unused without gum; scarce. R.P.S. Certificate (1975). S.G. V1, £20,000 £4,000-6,000

Inland Revenue



525



526



527



528

- x525 ★ 1882-1901 6d. grey, EK, part original gum. B.P.A. Certificate (2016). S.G. O4, £575 £100-200
- x526 ★ 1887-92 1/- dull green, large part original gum; slight surface rub at foot. Signed E. Diena and Peter Holcombe and accompanied by his Opinion (1987) and B.P.A. Certificate (2016). S.G. O15, £1,000 £200-300
- x527 ○ 1892 £1 green, SB, cancelled by oval 'ACCOUNT BRANCH/GLASGOW' datestamp; repaired small thin at top as per B.P.A. pink Certificate (2016). S.G. O16, £2,500 £200-300
- x528 ○ 1901 1/- green and carmine, used; a little wrinkled and with hinge remainders. B.P.A. Certificate (2016). S.G. O19, £1,800 £300-400

Army Official



529

- x529 ☼ 1903 6d. pale dull purple, a very fresh example with full original off-white gum; scarce in such fine condition. S.G. O52, £2,800 £600-800

Government Parcels



530



531

- x530 ★ 1883-86 9d. dull green, large part original gum. B.P.A. Certificate (1989). S.G. O63, £2,750 £450-550
- x531 ★ 1902 1/- dull green and carmine, lightly mounted mint; thinned perf at top otherwise fine and fresh. B.P.A. Certificate (2018). S.G. O78, £1,350 £250-350

Telegraph Stamps



532

- x532 ★ 1876 5/- rose, Plate 1, EG overprinted 'SPECIMEN' type 9 and 1877 10/- AD brownish-lilac colour trial, overprinted 'SPECIMEN' type 8, both imperforate examples from the left of the sheet; the 10/- with a diagonal crease in the margin and a few other minor gum bends; an attractive pair £250-350

ANTIGUA

- x533 1862-1949 mint and used collection on old Scott album pages including 1862 6d. green mint, 1863-67 to 6d. used, 1872 CC to 6d. used, 1884-87 CA 1/- mint, 1903-07 to 5/- mint, 1908-17 MCA to 2/- and 1913 5/- mint, 1921-29 set to £1 mint, 1932 set to 5/- mint, 1949 Silver Wedding, War Stamps, Barbuda 1922 overprint set to 5/- mint, etc.; chiefly good to fine £500-600



The Royal Philatelic Society London

We are pleased to receive proposals for membership of the Society which is through election.

If you are interested in membership, please contact us at secretary@rpsl.org.uk

If you have no proposer or seconder, please contact us for further information.

Tel: 00 44 (0)20 7486 1044 | www.rpsl.org.uk

The world's oldest and most prestigious philatelic society, established 1869, with over 2,000 members in more than 70 countries.

Extensive premises in London's West End house the Society's superlative library, plus Museum and Archive, and provide first-class meeting facilities.

The Society's Online Catalogue provides access to over three-quarters of a million philatelic indexes to members world-wide.

A fascinating programme of displays and meetings throughout the year, supplemented by regional meetings and gatherings at major international events.

The Society publishes ten times a year its own journal, *The London Philatelist*, containing articles of outstanding philatelic research, in addition to publishing major philatelic works.

We are honoured to have Her Majesty Queen Elizabeth II as our Royal Patron

ASCENSION



Ex 534

Ex 536

- | | | |
|--------|--|--------------|
| x534 © | 1922 (2 Nov.) to 3/- set of nine and 1924-33 to 3/- set of twelve, each overprinted 'SPECIMEN'; large part original gum. S.G. 1s-20s, £1,800 | £400-500 |
| x535 | 1922 St. Helena overprint specialised mint and used group on album pages including the mint set of nine to 3/-, with ½d. including blocks, corner plate blocks of four, some blocks with minor varieties, used singles, 1d. with blocks and varieties, 2d. black and grey variety blot on scroll mint, 3/- corner plate number example, 2d. and 3d. each in corner plate blocks of four, fine used examples, etc.; a nice and useful selection for the specialist | £300-400 |
| x536 | 1924-33 specialised mint and used collection on album pages including the set overprinted 'SPECIMEN', all values duplicated both mint and used with varieties including torn flag , cleft rock , broken mainmast and broken scroll along with other varieties listed in Attwood's handbook, corner pairs and blocks of four with varieties, 4d. with forged cancellation and R.P.S. Cert., ½d. part right-hand sheet of fifty, etc.; a very useful and valuable assembly | £1,000-1,500 |
| x537 | 1934 specialised mint and used collection on album pages including set perforated 'SPECIMEN' (no 2/6d.), the issued set both mint and used, most values in marginal pairs or imprint blocks of four, used on covers, etc.; a useful group | £250-350 |

BAHAMAS

- | | | |
|--------|--|------------|
| x538 | 1859-1902 mint and used group on an album page including 1859-60 1d. reddish-lake on thick transparent paper unused, a range of perforated 1d. unused (4) and with manuscript cancellations (5), 4d. and 6d. mint and used, 1882 CA 1d. scarlet-vermilion marginal block of four, 1884-90 5/- used and £1 with manuscript cancellation, etc. | £300-400 |
| x539 ★ | 1859-1962 mainly mint collection on album pages including 1d. reddish lake on medium transparent paper, 1861-62 1d. lake, 1863-77 CC 1d. (4, shades), 4d., 6d. with Sismondo Cert., 1863-80 CC perf. 14 1/-, 1884-90 CA set to £1, 1902 CA set to £1, 1912-19 set to £1, 1917-18 War Tax (16), 1921-27 Script to £1, 1938-52 Script set to £1, 1942 Landfall of Columbus set to £1 1948 set to £1, 1954-63 set, etc.; chiefly good to fine. Cat. £4,000+ | £800-1,200 |
| x540 ★ | 1862-1948 mint collection on album pages including 1862-75 CC with values to 6d., 1882 CA to 1/-, 1883 4d. on 6d. deep violet, 1884-90 set to £1, a range of 1863-82 1d. shades on a page (8), 1902 set to 5/-, 1912-18 set to £1, 1921-37 set to £1, 1938-52 Script set to £1 with perforation and paper types, 1940 3d. on 2½d. blue complete pane of sixty, 1942 Landfall of Columbus set to £1 and 1948 set to £1; chiefly fine | £500-700 |



541

x541 田

1942 Landfall of Columbus 4d. light blue and red-orange block of four from the left of the sheet, variety 'COIUMBUS' [R.5/2], mounted on the upper pair and margin only, the stamp with variety remaining unmounted mint; fine and attractive. S.G. 168a, £1,200

£250-350

BARBADOS

x542 ★

1852-80 mint selection of Britannia issues on pages including 1852 blued paper 1d. blue and 4d. brownish red, unissued blue pair, 1855-58 ½d. green (3 including a pair), 1d. blue (3) and a pair, 1861-70 with values to 4d. vermilion, 1873 values to 1/-, etc.; chiefly good to fine

£250-350



543



544

x543 ★

1873 Watermark Small Star 3d. brown-purple, a well-centred example with part original gum. B.P.A. Certificate (1994). S.G. 63, £350

£80-100

x544 ○

1892 'HALF-PENNY' on 4d. deep brown, variety **surcharge double in red and in black**, cancelled by part bootheel duplex; scarce. Brandon Certificate (2016). S.G. 104b, £1,200

£250-350

BARBUDA

x545

1922 issue mint and used collection on pages comprising set of eleven overprinted 'SPECIMEN' (2, one set affixed to small pieces of card), the issued stamps mint and used to 5/- with some duplication including pairs, strips and blocks of four, 6d. dull and bright purple used on Registered cover to Texas and redirected to St. Mary's, 1949 first day cover bearing Leeward islands ½d. to 3d. cancelled by four strikes of the Barbuda c.d.s., Antigua with Barbuda cancellations, etc.; a useful group

£200-400

BECHUANALAND PROTECTORATE



- x546 ★ 1888 ½d. to 1/- part set of seven and 4d. on 4d. lilac and black with red overprint, part original gum. S.G. 40-46, 51, £1,100+ £200-300

Postage Due Stamps

- x547 ○ 1926 ½d., 1d. and 2d., fine used. S.G. D1-D 3, £275 £80-100

BERMUDA

- x548 ★ 1865-1966 mint collection on album pages including 1865-1903 CC 1d. to 6d. and perf. 14 x 12½ 3d. to 1/-, 1874 3d. (Type 7) on 1/-, 1875 1d. on 2d. and 3d., 1883-1904 set to 1/-, 1906-10 set to 4d., 1910-25 to 1/-, 1918-22 MCA to 10/-, 1920 and 21 Tercentenary sets of nine, 1922-32 Script set to 12/6d., 1938-51 set to £1 etc. complete to 1966; good to fine. Cat. £6,100+ £1,000-1,500



- x549 1874 'THREE PENCE' on 1/- green, type 7, used, 1875 'One Penny' on 3d. yellow-buff unused, 1924-32 Script 12/6d. grey and orange, 1938-53 Script 2/-, 5/- (2) and 10/- all unused; chiefly fine £200-300
- x550 ★ 1875 'ONE PENNY' on 3d. yellow-buff, a well-centred example with small part original gum. S.G. 16, £450 £100-150



- x551 © 1918-22 MCA 2/- to £1 set of six each overprinted 'SPECIMEN', large part original gum. S.G. 51bs-55s, £900 £250-350



Ex 552

x552 ★

1924-32 Script 12/6d. grey and orange showing small breaks in scroll at left, 1938-53 10/- green and red shades (2), 12/6d. grey and yellow and £1 purple and black on red shades (2); chiefly lightly mounted mint and fine

£300-400



Ex 553

x553

1937 Propaganda Forgeries 1/2d. to 3d. set of six with framed 'LIQUIDATION/ OF EMPIRE/ BERMUDA IS.', the 1/2d. from the left of the sheet and unused, the other values corner examples and each cancelled by d.s. in violet, fine and attractive

£150-200

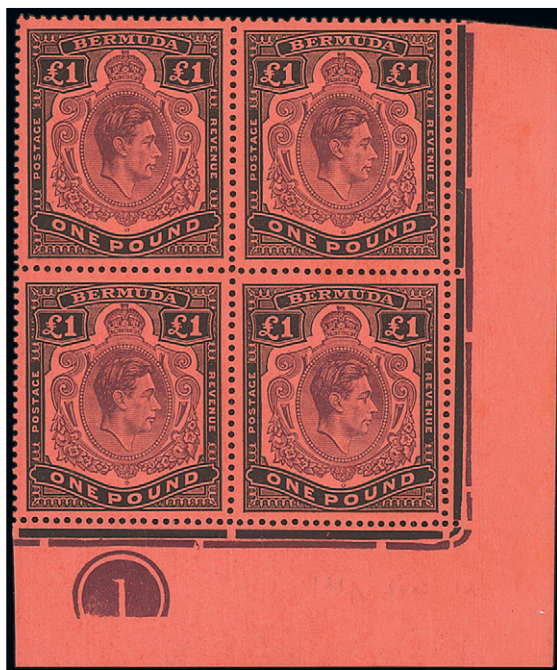
x554 ★

1938-53 Script 5/- bronze-green and carmine-red on pale yellow ordinary paper, a very lightly mounted mint example of this scarce printing. B.P.A. Certificate (2009). S.G. 118c, £1,500

£500-600



554



555

x555 田

1938-53 £1 bluish purple and black on salmon plate block of four from the lower right of the sheet; fine unmounted mint. S.G. 121

£100-200

BRITISH COLUMBIA AND VANCOUVER ISLAND



Ex 556

x556

1860-69 mint and used selection on an album page (12) comprising 1860 no watermark 2½d. deep reddish rose and 2½d. pale reddish rose both unused, 1865-67 3d. deep blue and 3d. pale blue 1865 imperf. 10c. blue used (very close on two sides), perf. 14 5c. rose and 10c. blue (tone spots) both unused, 1868-71 perf. 12½ 25c. yellow unused and perf. 14 2c. unused and 5c. and 25c. (2) used; a few ragged perfs in places though generally good to fine. Cat. £3,800+

£500-700

BRITISH GUIANA

1852 (1 Jan.) Waterlow



x557 ○

1c. black on magenta, good to large margins, used with faint 'DEMERARA' cancellation; some light surface rubbing as often found, the surface has been touched up in a few places, still a presentable example of this scarce and popular stamp. Peter Holcombe Certificate (1993). S.G. 9, £5,500

£800-1,000

x558 ○

1c. black on magenta, two used examples, the first just touched to clear margins and light double-arc c.d.s, faint crease, B.P.A. Certificate (1996), the second example with good margins all around and clear central 'DEMERARA' c.d.s., torn and thinned with a repair at upper left, Brandon Certificate (2004). S.G. 9, £11,000

£1,000-2,000

x559 △

1c. black on magenta tied to small piece by 'DEMERARA' c.d.s., huge margins and fresh appearance, faint trace of a crease, exceptional colour and fine; an outstanding example with fine pedigree. Giulio Bollafi (1963) and Peter Holcombe (1981) Certificates. S.G. 9

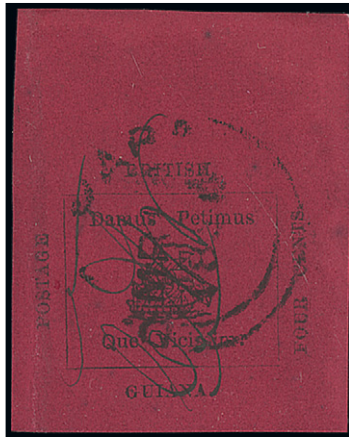
£4,000-6,000

PROVENANCE:
Caspary, May 1957
Burrus, November 1963

x560 ○

4c. black on deep blue, two used examples, the first just touched on one side but with clear margins elsewhere and neatly cancelled by 'DEMERARA' c.d.s., some surface rubbing and a light corner bend, Brandon Certificate (2004), the second example cut-into at left and foot, cancelled by 'DEMERARA' c.d.s.; surface rubbing and creasing. Sergio Sismondo Certificate (2015). S.G. 10, £24,000

£1,000-2,000



561

x561 ○

1856 4c. black on magenta initialled 'CAW' by the post official C.A. Watson and cancelled by central strike of 'DEMERARA' c.d.s of March 1856, huge margins and part sheet margin at top; light vertical crease at left through 'POSTAGE', fresh colour and a very fine example of this rarity. R.P.S. Certificate (1997). S.G. 24, £25,000

£10,000-15,000

PROVENANCE:

Ferrari, 1921

Champion

Edward Gilbert, June 2005

British Guiana - *contd.*



562



563

- x562 ★ 1863-76 perf. 15 24c. yellow-green, small part original gum; a few short perfs. in places, otherwise fine. S.G. 114, £850 £150-250
- x563 ○ 1878 Provisional, Official (1c.) on 4c. blue with one horizontal bar and one vertical bar, used with small fault at foot, nevertheless a rare stamp. Brandon Certificate (2000). S.G. 147, £5,500 £400-600

BRITISH HONDURAS

- x564 1865-1949 mint and used collection on old Scott album pages including 1865 1d., 6d. and 1/- all used and 6d. unused, 1872-73 1d. and 3d. unused and 6d. and 1/- used, 1882-87 6d. unused, 1888 surcharges unused, 1888-91 surcharges unused, half of 2c. on 1d. used on small piece, 1891-1901 set to \$2 mint, 1904-07 to \$1 mint and \$2 and £5 fiscally used, 1913-21 MCA set to \$5 mint, 1922-33 set to \$5 mint, 1938-47 set to \$5 mint, War Tax stamps, Belize Relief Fund set, Postage Dues, etc. £400-600

BRITISH LEVANT

- x565 ★ 1885-1921 mint collection on album pages largely complete and including 1905-12 set to 1/-, 1911-13 set to 24pi. on 5/-, 1913-14 set to 5pi. on 1/-, 1921 British Currency set to 1/-, 1921 Turkish Currency set to 180pi. on 10/-, etc.; chiefly good to fine £500-700



Ex 566

- x566 ★ 1916 Great Britain overprint set of eight to 1/-, large part original gum; the 8d. a trifle toned, otherwise fine and fresh. S.G. S1-S8, £1,400 £300-400

BRITISH SOLOMON ISLANDS

1907 Issue



Ex 567

x567 田

½d. to 1/- imperforate plate proofs in blocks of four in issued colours on unwatermarked paper without gum; a few minor imperfections though attractive and scarce multiples

£400-600

x568 ★

½d. to 1/-, part original gum; offered along with a set of forgeries and a 'used' set with bogus 'Munia' cancellations. S.G. 1-7

£80-100

SPINK
WHERE HISTORY IS VALUED



OFFICIAL SPONSOR OF VIRTUAL STAMPEX INTERNATIONAL 2020

01-03 OCTOBER 2020 | SIGN UP FOR THE SHOW AT WWW.STAMPEX.VFAIRS.COM

British Solomon Islands, 1907 Issue - *contd.*



569



570

- x569 ★ 田 1/2d. ultramarine block of four from the top of the sheet, variety **imperforate between the stamps and margin**, part original gum; very rare. R.P.S. Certificate (1996). S.G. 1 var. £500-700
- x570 ★ 2d. yellow-orange from the top of the sheet, variety **imperforate between stamp and margin**, large part original gum, trace of crease at lower left, otherwise fine S.G. 4 var. £300-400

BRUNEI



571

- x571 ★ 1941 6c. greenish grey and 8c. red, **unissued without the Japanese Occupation overprint**, large part original gum. S.G. footnote after 60-78, £205 £50-70

BURMA



Ex 572

- x572 ★ 1937 India overprint set of eighteen to 25r., large part original gum, fine. S.G. 1-18, £2,750 £600-800

BUSHIRE



573

x573 ○

1915 (11 Sept.) 3ch. deep green, a used example with part clear c.d.s. Mehrdad Sadri Persiphila Certificate (2008). S.G. 17, £1,300

£300-400

CANADA AND PROVINCES



Ex 574

x574 ★

1851-1939 mainly mint collection on album pages including 1851 3d. used (heavily cancelled), 1852-57 ½d. rose, 1859-64 values to 12c., 1868-90 with values to 15c., 1870-90 to 10c., 1897 Jubilee set to \$5 (\$5 no gum), 1897-98 set to 10c. and 1898-1902 set to 10c., largely complete thereafter to 1939 including Air issues, Special Delivery and Officials; British Columbia, Prince Edward Island, Nova Scotia, New Brunswick and Newfoundland all with a very good range of imperforate early issues and Newfoundland also with most sets to 1938, Airmails and Postage Dues; a huge collection in chiefly good to fine fresh condition; some early issues with minor faults. Viewing recommended

£2,000-4,000

THE "DUBOIS" COLLECTION OF JAMAICA POSTAL HISTORY AND STAMPS



19 NOVEMBER 2020 | LONDON

Considered to be the greatest collection of Jamaica ever assembled

Canada and Provinces - *contd.*



Ex 575

x575

1851-1943 mint and used collection on Scott album pages including British Columbia 1860 2½d. reddish rose mint and used, 1865 imperf. 10c. used (2, one ex. King Farouk 1 with Cert.), perf. 14 5c. rose and 10c. blue used, 1865-67 3d. blue mint (2) and used, 1868-71 2c. brown unused, 5c. used, 25c. unused and used and 50c. unused, New Brunswick with 1851 3d. red used (2) and 6d. yellow used, Nova Scotia with 1851-53 1d., 3d. (4) and 6d. (2) all used, 1860-63 to 12½c. mint and used, Prince Edward Island 1861 perf. 9 3d. blue unused and 6d. green used, 1862-65 to 9d. lilac, plate proof 3d. blue block of four, etc.; Newfoundland with 1857-64 values to 8d. unused, 1860 values to 5d. unused, 1862-64 to 1/- unused including 4d. strip of three, 1865-70 to 24c. 1880-82 with 2c. yellow-green block of four with inscription, 5c. blue, other values in blocks of four and duplicated mint and used, 1897 set of fourteen to 60c. mint, 1897-1918 set of eight to 5c. mint and some values in blocks of four, 1911 Coronation set of eleven, 1919 Caribou set to 36c. mint (no 8c. magenta), 1920 3c. on 15c. (three types) and in blocks of four, 1923-24 set mint, most other mint sets to 1944 with some values in blocks of four, 1919 Air \$1 on 15c. block of four variety **no comma after 'AIR POST'** and 1921 35c. Airmail block of four variety **no stop after '1921'**, 1933 Air \$4.50 on 75c., Postage Dues etc. chiefly good to fine; a huge range with high catalogue value

£3,000-6,000

x576 ○

1851-1943 used collection on album pages including 1851-59 selection of pence issues comprising 1851 6d., 1852-57 3d. (3), 6d., 7½d. and 10d., 1858-59 3d., 1897 Jubilee set to \$4, 1898-1902 duplicated to 20c. (2), 1903-12 duplicated to 50c. (2), 1928-29 to \$1, a few Officials, Registration stamps, Airs, etc. mixed condition

£1,000-1,500



577



Ex 578

x577 ★田

1859 1c. deep rose **imperforate block of four**, clear to large margins and with gum despite being issued without it as explained on the accompanying Vincent Greene Certificate (1995). Very rare with only one sheet of one hundred thought to exist. S.G. 30a, £9,500+, Unitrade C\$12,000+

£2,000-4,000

x578

1897 Jubilee mint and used selection on two Hagner pages (23) comprising ½c. black mint and used, 1c. orange mint (4). 2c. green mint (2) and used, 5c. blue mint with Vincent Greene Cert., 6c. brown mint (2) and used with Vincent Greene Cert., 8c. slate-violet mint and used, 15c. slate used, 20c. vermilion used, 50c. ultramarine mint, \$1 lake mint, \$2 deep violet mint (2, one with Philatelic Foundation Cert.) and \$4 violet used; a useful group in good to fine condition. Cat. £4,300+

£1,000-1,500

CAPE OF GOOD HOPE



Ex 579

x579 ○

1853-63 group of seventeen (17) used Triangulares on an album page, the majority with Ulrich Ferchenbauer or P.F.S.A. Certificates comprising 1853 deeply blued paper 1d. pale brick-red, 1d. deep brick-red and 4d. deep blue, slightly blued paper 1d. brick-red, 1d. brown-red and 4d. blue with large part of adjoining stamp at foot, 1855-63 1d. brick-red with large part of adjoining stamp at foot, 1d. rose, 1d. deep rose-red, 4d. deep blue and 4d. blue, 6d. pale rose-lilac, 6d. deep rose lilac and 6d. slate-lilac, 1/- bright yellow-green and 1/- deep dark green; condition slightly mixed in places though generally good to fine. Cat. £5,900+

£800-1,200

1853 Plate Proofs



580

582

581

x580 ②

1d. black, good to large margins; light stain spots in places, otherwise fine

£100-150

x581 ②

1d. dull rose on ungummed paper with sideways watermark, adjoining stamp visible at foot; fine and rare

£200-300

PROVENANCE:

Sir Maxwell Joseph, October 1982

x582 ②

4d. deep blue pair on *bleuté* paper, good to very large margins; gummed, one slightly stained, nevertheless an attractive pair

£250-350



— 583 —

x583 ○

1853 1d. brick-red on slightly blued paper, two used pairs with good to large margins; the first with sharp outline to blueing, the second with just a trace of blueing, attractive. S.G. 3, £1,400

£300-400

Cape of Good Hope - *contd.*



584

x584 ○ 田

1855-63 white paper 4d. deep blue block of six with close to large margins, just touching on one side; cancelled by three clear strikes of 'CGH' obliterator. S.G. 6, £570+

£150-250



585

x585 ★ 田

1855-63 white paper 1/- deep dark green block of four from the upper left of the sheet, large margins on remaining sides, part original gum; fine and attractive. S.G. 8b, £1,800

£500-600

1861 Woodblocks



586

x586 ○

1d. vermilion pair, huge margin at left and good margin at right, cut-into at top and foot, cancelled by central clear strike of 'CGH' postmark, small tear at top; nevertheless a good multiple of these scarce stamps. Ferchenbenbauer Certificate (2001). S.G. 13, £6,000+

£800-1,000



587

x587 ○

1d. vermilion, close to large margins, cancelled by single central cancellation; pressed crease at right not affecting appearance. Signed A. D(iena) and with his Certificate (1962), and R.P.S. Certificate (1992). S.G. 13, £3,000

£600-800



588

x588 ★

1d. vermilion, clear margins on two sides and just touching on the third side, unused examples with fresh colour; tiny thin spot at foot, otherwise fine and rare. S.G. 13, £17,000

£1,500-2,500



589



590



591

- | | | |
|--------|---|----------|
| x589 ○ | 4d. milky blue used pair, large margin on one side, cut-into on three sides, cancelled by indistinct central postmark, slightly damaged corner at upper right. S.G. 14, £4,500 | £400-500 |
| x590 ○ | 4d. pale milky blue, a superb used example with large even margins, lightly cancelled; scarce in such fine condition. S.G. 14, £2,250 | £500-700 |
| x591 ★ | 4d. pale milky blue, an unused example with close margins and cut-into in a few places; some minor repairs though a respectable space-filler of this rare stamp. S.G. 14, £25,000 | £500-700 |

1863-64 De La Rue



592

- | | | |
|---------|--|----------|
| x592 ★田 | 6d. bright mauve block of four from the top of the sheet, large even margins on the remaining sides, part original gum; fine and a handsome multiple. B.P.A. Certificate (1998). S.G. 20, £1,700 | £600-800 |
|---------|--|----------|



593

- | | | |
|---------|---|----------|
| x593 ★田 | 6d. bright mauve block of four with large even margins, part original gum; fine and attractive. S.G. 20, £1,700 | £500-700 |
|---------|---|----------|

Cape of Good Hope, 1863-64 De La Rue - *contd.*



594

x594 ★

1/- bright emerald green block of eight from the left of the sheet, large even margins elsewhere, original gum and lightly mounted; a spectacular and attractive multiple. S.G. 21, £5,200+

£2,000-4,000

Mafeking



Ex 595

x595 ○

1900 used group (15) comprising scriffed overprints on Cape of Good Hope 1d. on ½d. green (3, one used on piece) 1d. on ½d. green and 3d. on 1d. magenta (3, one used on piece), on Bechuanaland Protectorate 1d. on ½d. vermilion and 3d. on 1d. lilac, and on British Bechuanaland 6d. on 3d. lilac and black (2) and 1/- on 4d. green and purple-brown, sans-serif overprints on Bechuanaland Protectorate 6d. on 2d. green and carmine (3, one used on piece); a little soiling in places though chiefly good to fine. S.G. 1, 2 3, 6, 7, 10, 11, 13, £1,400

£200-300



596



597

x596 ○

1900 1d. deep blue on blue and 1d. pale blue on blue, both used with part 'MAFEKING/C.G.H.' datestamps. S.G. 17 and 18, £700

£150-250

x597 ★

1900 1d. deep blue on blue, a marginal example from the foot of the sheet; large part original gum. Brandon Certificate (1978). S.G. 18, £1,200

£300-400

Vryburg

— 598 —

x598 ★

1899 ½d. green, 1d. rose, 1d. on 6d. mauve and 2½d. blue; small part to large part original gum, fine and a scarce group, the 2d. on 6d. signed A. D(iena). S.G. 1-4, £4,175

£1,000-1,500

CAYMAN ISLANDS

— Ex 599 —

x599 ★

1907-09 mainly mint group on a Hagner (18) comprising 1d. on 4d. black and red on yellow unissued revenue, 1907 ½d. on 5/- salmon and green, 1d. on 5/- salmon and green, both mint and used, 1907-09 set of ten to 10/- with additional 4d. block of four, 1/- and 10/-; fine and with large part original gum. Cat. £2,000+

£400-600

CEYLON

— Ex 600 —

x600

1857-64 mint and used group on a Hagner page and a stockcard (39) including 1857-59 1d. blue unused and used (7, including a pair, one used on piece and an irregular block of four with faults), 5d. chestnut unused with R.P.S. Cert. (small closed tear), 9d. purple brown used (6, all with Certificates), 1/9d. green unused (2, both with B.P.A. Certificates) and used (3, two with Holcombe and B.P.A. Certificates respectively) 2/- plate proof in black and the issued stamp used, 1857-64 ½d. dull mauve unused (4) and 1861-64 including 9d. deep brown used (2, one with B.P.A. Certificate) etc; a lovely group, condition a little mixed in places, chiefly good to fine, high catalogue value

£3,000-5,000

x601 ○

1857-85 mainly used collection on pages including 1857-59 1d. (5), 2d. (6 including a pair), 5d. (2), 6d. (2), 9d., 1/9d. and 2/-, 1863-66 CC with 1d., (12 including a strip of 6), 2d. (12), 5d. (2), 6d. (14), 10d. (6), 1/- (5), 2/- (4), etc.; a useful group in mixed condition

£400-600

x602

1857-1900 mint and used selection on stockpages including 1857-59 1d. mint and used, 2d. mint (3), 5d. used, 6d. used (5), 8d. used, 1/9d. unused, 2/- used, 1857-64 ½d. dull mauve unused (4), 1861-64 with values to 1/- unused and 2/- used, 1899-1900 set to 2r.25 unused, Officials, duplication, etc.; condition mixed

£400-600

Ceylon - contd.



Ex 603

- x603 ○ 1857-1936 used collection on album pages with 1857-59 all values including 4d. rose and 2/- dull blue with Certificates, 1861-64 to 1/9d., 1863-66 to 2/-, 1872-80, 1882 and 1885 surcharges, 1888-90 with various shades and overprint types, 1893-99 with values to 2r.50c., 1904-05 MCA to 2r.25c., a few later sets with values to 5r., etc.; mixed condition though plenty good

£1,000-2,000

- x604 ○ 1857-1958 chiefly used collection on album pages including 1857 6d. purple-brown, 1857-59 with all values to 2/- and most shades as identified by the collector, 1861-64 with values to 2/- along with shades and duplication, 1863-66 CC with pairs and all values to 2/-, 1867-70 to 2/-, 1872-80 including 2r.50c used and unused, 1883-98 CA including 24c. brown purple prepared for use but not issued overprinted 'SPECIMEN', 1885 surcharges, 1888-90 and 1890 surcharges including varieties, 1910-11 set to 10r. mint, 1912-25 MCA including 50r. to 500r. used and 1000r. overprinted 'SPECIMEN', imperf plate proof pairs, 1921-32 Script to 500r. used or fiscally used, later sets to 1959 mainly used including 1958 overprint varieties, Officials, Revenues etc. a huge range in mixed condition but with plenty good to fine

£1,500-2,500

1857-59 Issue



Ex 605

606

- x605 ○ A used group (8) comprising 1d. blue (2), 2d. green, 5d. chestnut, 6d. purple-brown (2, one with Briefmarkenprüfstelle Cert.), 10d. dull vermilion (with R.P.S. Cert.) and 1/- slate-violet, all with four margins and light cancellations and chiefly fine. S.G. 2, 3, 5, 6, 9 and 10, £1,300+

£300-400

- x606 ★ 2d. green horizontal pair with good to large margins and 10d. dull vermilion with good even margins; part original gum, both signed A. D(iena) and accompanied by Giulio Bolaffi Certificates (1968). S.G. 3 and 9, £1,300

£500-700



607



Ex 609

- x607 ○ 4d. dull rose, a used example just cut-into at foot though clear of the design on remaining sides, fine and rare. B.P.A. Certificate (1995). S.G. 4, £4,500 £500-700
- x608 ★ 1857-66 mint selection on stockcards (60) including 1857-64 imperf. ½d. dull mauve (3), 1861-64 1d. 2d., 4d. (3), 5d. (2), 9d. (2 and one used), 1/- and 1/9d., 1863-66 including 5/- yellow-olive (6) and with values to 2/-, duplication etc.; chiefly good to fine, a few with toned gum £1,000-1,500
-
- x609 ☉ 1885 Surcharge set of seven to 1r.12c. on 2r.50c., each overprinted 'SPECIMEN', part original gum. S.G. 187s-193s, £1,300 £300-400
- x610 1890 5c. on 15c. olive-green selection comprising a single overprinted 'SPECIMEN', a block of four along with single mint and used examples all with **surcharge inverted**, an example with 'REVENUE' **omitted**, a single with plate number '1', a corner pair one with 'POST' and 'AGE' spaced, a corner block of four and single with 'FLVE' for 'FIVE'; a useful group in slightly mixed condition. S.G. 233-233s, £900+ £200-300



611



612



Ex 613

- x611 ☉ 1912-25 MCA 100r. grey-black overprinted 'SPECIMEN', large part original gum. S.G. 321s, £425 £100-150
- x612 ★ 1921-22 Script 100r. brownish-grey, lightly mounted mint; a very light stain at the upper left barely affecting appearance. S.G. 359, £3,250 £700-900
- Official Stamps**
- x613 ★ 1869 2d. yellow, 6d. deep brown, 8d. chocolate, 1/- pale lilac and 2/- deep blue and CC 1d. blue and 3d. carmine-rose; part original gum, some with a few pulled perfs. S.G. O1-O7, £740 £200-300

CYPRUS



Ex 614

x614 ★

1880-1928 mainly mint selection on a page comprising ½d. rose Pl. 19 used, 1d. red Pl. 193, 4d. sage green, 1894-96 CA set of ten to 45pi. both mint and used, 1904-10 MCA set of twelve to 45pi. and 1924-28 Script set to £1; chiefly good to fine and with part original gum. Cat. £3,000+

£600-800



Ex 615

x615 ★

1880 ½d. rose Pl. 15, 1d. red Pl. 215, 2½d. rosy-mauve, 4d. sage-green, 6d. grey and 1/- green, each with part original gum, the 4d. with a few stain spots. S.G. 1-6, £1,600+

£400-500



Ex 616

x616 ©

1924-28 MCA/Script set of twenty-one and 1928 50th Anniversary set of ten to £1, overprinted 'SPECIMEN', large part original gum. S.G. 102s-132s, £1,800

£400-600

FALKLAND ISLANDS



Ex 617

x617 ★

1898-1955 mint selection on Hagner pages including 1898 2/6d. and 5/-, 1904-12 MCA set to 5/-, 1912-20 set to £1, 1918-20 War Stamps (9), 1921-28 Script set to 3/-, 1929-37 set to £1, 1933 Centenary part set to 5/- (horizontal bend), 1938-50 set to £1, Dependencies sets etc.; condition a little mixed in places though generally good to fine. Cat. £4,700+

£1,000-1,500



Ex 618

x618 ☉

1912-20 MCA set of eleven to £1 each overprinted 'SPECIMEN'; some natural gum wrinkles on the higher values, large part original gum. Scarce. S.G. 60s-69s, £1,900

£500-700



Ex 619

x619 ☉

1921-28 Script set to 3/-, ½d. to 6d. each in horizontal pair and additional ½d., 2½d. blue and 6d. single examples, all overprinted 'SPECIMEN'; the majority without gum and a few with a little toning. S.G. 73s-80s, £850+

£200-300



620

x620 ⑤

1933 Centenary 5/-, 10/- and £1 each perforated 'SPECIMEN'; the 10/- with staining affecting the back and showing through to the front, the others fine and lightly mounted, attractive spacefillers. S.G. 136s-138s

£200-300



Ex 621

x621

1938-50 Script mint set to £1 along with some listed shades with Stefan Heijtz Certificates including 5/- steel blue and buff brown, indigo and pale yellow-brown used (2) and 10/- black and orange, also used pairs with town cancellations, etc.

£400-600



622

x622 △

1949 5/- dull blue and yellow brown tied on piece by clear strike of 'FALKLAND ISLANDS/SOUTH GEORGIA/26 NO/49/DEPENDENCY' Proud Type D11; fine and scarce. S.G. 161c

£200-300

The Famous “H.M.S. Glasgow” Error



623

x623 ★

1964 Battle of the Falklands, 6d. black and light blue, error **H.M.S. Glasgow**, fresh and lightly mounted mint; one of the great rarities of the Elizabethan era, only twenty-three examples recorded. S.G. 216a, £40,000

£12,000-15,000

Note: In December 1964 the Falkland Islands issued a set of four stamps to commemorate the 50th anniversary of the naval battle in the South Atlantic. Each of the three low values depicted a Royal Navy ship involved in the action. Over four years later a Canadian collector reported finding a 6d. stamp with the wrong ship, ‘H.M.S. Glasgow’ instead of ‘H.M.S. Kent’. It has since been determined that one sheet of sixty was printed in error and sent to the U.S.A., there are twenty-three known examples of this striking error.

FIJI



624

- x624 ★ 1871 thin vertically ribbed paper, 1d. black on rose, an unused example with part original gum; small split along vertical frame line at left and a couple of small thins. S.G. 5, £1,100 £100-150
- x625 ★ 1872-98 mint selection on stockcards (57) including a range of overprints, surcharges and perforation types with value to 5/-, 1876 'VR' monogram overprints, 1891 surcharges; a useful range with some scarce items; condition a little mixed with some toning in places £200-400

GAMBIA

- x626 ★ 1869-1937 mint collection on Scott album pages comprising 1869-72 no watermark 4d. and 6d. (no gum) and CC 4d. and 6d. all with four margins, 1880-81 CC set of seven to 1/- and CA set to 1/-, 1898-1902 set to 1/-, 1902-05 CA set to 3/-, 1904-06 set to 3/-, 1912-22 MCA set to 5/-, 1921-22 Script set to 4/-, 1922-29 set to 10/-, etc.; chiefly good to fine £600-800

1886-93 Watermark Crown CA



627

- x627 ★ ½d. myrtle-green, variety **watermark Crown to right of CA** complete mint sheet of fifteen additionally showing long leg to 'M' of 'GAMBIA' [R.1/2, 1/5] and 'broken nose' [R.3/3], hinged in the selvage, some peripheral thinning to margins only; fine. S.G. 21w, £1,500+ £600-800



Ex 628

x628 ★[®]

6d. bronze-green complete sheet of fifteen, variety **sloping label** [R.1/1, 1,5], lightly mounted on two stamps only; a few diagonal gum bends not affecting fine appearance; also ½d. myrtle-green complete sheet of fifteen, unmounted mint. S.G. 21, 33, 33a; £875+

£300-400

Note: In 'Gambia: Perforated Cameos' by J. F. Rose (West Africa Study Circle, 2011) it is noted that the sloping label reaches its maximum distortion on the bronze-green shade leading, it is thought, to the withdrawal of the plate and replacement before the fourth printing.

THE GARY DIFFEN COLLECTION OF AUSTRALIAN COLONIES ERRORS

PART II

1 October 2020 | 10 AM | London

TASMANIA | VICTORIA | WESTERN AUSTRALIA

Gambia, 1886-93 Watermark Crown CA - *contd.*



629

x629 ⊕ B

6d. olive-green complete sheet of fifteen, variety **sloping label** [R.1/5], fine mint and mounted in the margins only; some light gum bends in places. Brandon Certificate (2008). S.G. 32d, 32da; £1,370

£400-600

GIBRALTAR



Ex 630

x630 ★

1886 Bermuda overprint set of seven to 1/-, part original gum; 1d. and 4d. with gum toning, otherwise good to fine. S.G. 1-7, £1,200

£300-400



631



632

x631 ★

1889-96 10c. carmine, variety **value omitted**, a superb example with sheet margin at top, fresh and fine with just the merest trace of hinging. One of the finest known examples. B.P.A. Certificate (1991). S.G. 23b, £7,000

£3,000-4,000

PROVENANCE:

Isleham, March 1987

"Samos", June 1991

Howard & Torie Gibraltar, February 1996

William Gross, October 2008

x632 ☉

1925-32 Script £5 violet and black, unmounted mint; slightly toned gum. S.G. 108, £1,600

£600-800

GOLD COAST



Ex 633

x633 ☉

1918-24 Script 1d. on 1d. War Tax and ½d. to £2 set of fifteen including both Die I and II of 15/-, each overprinted 'SPECIMEN'; part to large part original gum. S.G. 85s-102s, £540+

£200-300



634

x634 ★

1921-24 £2 green and orange, lightly mounted mint. S.G. 102, £600

£200-250

GRENADA

x635

1861-1951 mint and used selection on Hagner pages with 1861-62 1d. mint and used, 1863-71 1d. mint and used (6), 6d. used (6), 1875 1/- deep mauve variety 'SHLLING' used, 1881 surcharges, 1883 set to 1/- mint, 1895-99 set to 1/- mint, 1902 and 1904-06 sets to 10/- mint, 1906-11 set to 10/- mint, 1913-22 MCA set to 10/-, 1938-50 set to 10/- including 10/- block of four, 1951 set to \$2.50 and 1953-59 set to \$2.50; chiefly good to fine, condition a little mixed earlier on

£800-1,200

HONG KONG



Ex 636

x636 ★

1862-1952 mainly mint selection on a Hagner page comprising 1862 no wmk 2c. brown, 1863 CC 2c. brown, 8c. dull orange, 12c. blue, 18c. lilac, 24c. green, 48c. rose and 96c. grey all used, 1904-06 MCA \$10 slate and orange on blue, 1912-21 MCA set to \$10 including 12c., 50c. and \$10 on white backs, 1921-27 Script set to \$5 and 1938-52 set of twenty-three to \$10 including \$10 green and violet; a few with minor faults such as a little light toning though chiefly good to fine. Cat. £7,700+

£1,000-2,000



637



Ex 638

x637 ★

1876-77 28c. on 30c. mauve, large part original gum. S.G. 21, £1,800

£500-600

x638 ☉

1900-01 CA set of five to 30c. brown, each overprinted 'SPECIMEN', part original gum; the 2c. with small brown mark on reverse not affecting appearance. S.G. 56s-61s, £600

£150-250



Ex 639

Ex 640

x639 ☉

1903 CA set of fifteen to \$10 overprinted 'SPECIMEN', the stamps have all been removed from archival pages and have paper adhesion to the reverse, the majority in acceptable condition, the \$3 with faults; attractive space fillers. S.G. 62s-76s, £2,000

£200-300

x640 ☉

1912-21 MCA set of seventeen to \$10 each overprinted 'SPECIMEN', large part original gum; some light foxing in places. S.G. 100s-116s, £2,250

£600-800



Ex 641



Ex 642

- x641 ☉ 1921-37 Script part set of fourteen to \$5 overprinted 'SPECIMEN' (no perforated 2c., 3c., 5c. or 12c.), large part original gum, some light foxing in places. S.G. 117s-132s £200-300
- x642 ★ 1921-37 Script set to \$5 with a number of additional shades to 50c. (4), \$1 (2), 25c. with **broken flower**, also \$2 used, 1941 Centenary set and a range of Postage Dues from 1923; chiefly fine £400-500

Postal Fiscal Stamps



643



644

- x643 ★ 1891 \$5 on \$10 purple on red, large part original gum. S.G. F9, £425 £150-200
- x644 ★ 1897 \$1 on \$2 dull bluish-green, variety **both Chinese handstamps omitted**, large part original gum; tiny soil mark to left of Queen's head, otherwise fine and scarce. S.G. F11a, £2,000 £600-800

British Post Offices in China



Ex 645



Ex 646

- x645 ☉ 1917-21 50c. to \$10, each overprinted 'SPECIMEN'; large part original gum; the 50c. to \$1 with slight foxing on some of the perforations. A rare set. S.G. 12s-17s, £2,250 £700-900
- x646 1917-27 MCA almost complete mint and used including \$2, \$5 and \$10 mint and 1922-27 Script set of eleven to \$2 mint; chiefly fine. S.G. 1-28, £2,000+ £500-700

IRELAND

x647

1922-25 mint and used collection of Great Britain overprinted with mint 1922 Dollard Seahorse set, 1922 Thom Seahorse set (also used) 1922-23 set of fifteen. 1925-28 Seahorse set in wide and narrow overprints in vertical pairs, 1935 re-engraved set etc. a useful assembly. Cat. £6,800+

£800-1,200

ITALIAN EAST AFRICA

British Occupation



Ex 648

x648 田

1941 unissued surcharge set of nine to 10l. on 5l. each in block of four, the 10l. marginal, fresh and unmounted mint with each stamp signed A.D(iena); fine and rare multiples. Sassone 1-9, €22,500+

£3,000-5,000



The Royal Philatelic Society London

We are pleased to receive proposals for membership of the Society which is through election.

If you are interested in membership, please contact us at secretary@rpsl.org.uk

If you have no proposer or seconder, please contact us for further information.

Tel: 00 44 (0)20 7486 1044 | www.rpsl.org.uk

The world's oldest and most prestigious philatelic society, established 1869, with over 2,000 members in more than 70 countries.

Extensive premises in London's West End house the Society's superlative library, plus Museum and Archive, and provide first-class meeting facilities.

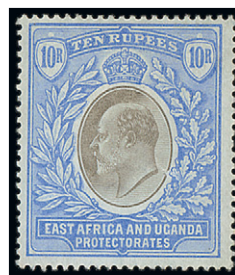
The Society's Online Catalogue provides access to over three-quarters of a million philatelic indexes to members world-wide.

A fascinating programme of displays and meetings throughout the year, supplemented by regional meetings and gatherings at major international events.

The Society publishes ten times a year its own journal, *The London Philatelist*, containing articles of outstanding philatelic research, in addition to publishing major philatelic works.

We are honoured to have Her Majesty Queen Elizabeth II as our Royal Patron

KENYA, UGANDA AND TANGANYIKA



Ex 649

- x649 1890-1954 mint and used collection on pages including B.E.A. 1890-95 ½a., 1a., 4a. and 8a imperforate singles unused, 1890-91 set to 5r. unused (5r. used), 1895 overprint set with values to 4r. and 1895-96 India set to 5r., mainly mint, 1896-1901 set to 5r. mint and used, 1897 set of six mint and used, 1898-1903 CC set to 10r. mint, K.U.T. 1903-04 5r. and 10r. mint, 1904-07 3r. and 5r. mint, 1912 MCA t 5r. mint and 10r. and 20r. used, 1922 Script set to £1 mint and used, 1935-7 and 1938-54 sets to £1 mint, Tanganyika 1917-21 G.E.A. set to 20r. mainly mint, 1922-24 set to £1 (30c. to £1 mint), 1927-31 set to £1 (£1 toned), Uganda with 1896 values to 1r. used and 1898 set to 5r; chiefly good condition. Huge catalogue value £1,500-3,000
- x650 1903-49 mint and used collection on album pages including 1903-04 CA values to 8a. unused and 2r. used, 1904-07 MCA with values to 5r. used (poor condition), 1907-08 New Currency set of nine both mint and used, 1912-21 MCA to 3r. mint and 2r. used, 1922-27 Script set to 10/- mint and £1 used, 1935-37 Script set to £1 mint and to 5/- used, 1938-54 set to £1 with shades and perforation varieties including £1 perf. 11¼ x 13 both mint and used and 10c. with **mountain retouch** [R.6/7] mint; a useful and attractive assembly, some of the earlier used examples in mixed condition though chiefly good to fine. Cat. £3,000+ £500-700



651



652



653



654

- x651 ★ 1904-07 MCA 10r. grey and ultramarine, lightly mounted mint. S.G. 31 £375 £100-150
- 1912-21 Watermark Multiple Crown CA**
- x652 ★ 20r. black and purple on red, large part original gum; light pencil notation to reverse. S.G. 59, £475 £150-200
- x653 ★ 20r. purple and blue on blue, large part original gum. S.G. 60, £550 £180-220
- x654 © 500r. green and red on green, overprinted 'SPECIMEN'; large part original gum, a couple of lightly toned perfs. at left, otherwise fine. S.G. 63s, £1,500 £500-700

Kenya, Uganda and Tanganyika - *contd.*

1922-27 Watermark Multiple Script CA



655

x655 ★

£5 black and blue, large part original gum; fine. S.G. 99, £3,250

£1,000-1,500



656

x656 ★

£20 red and green, large part original off-white gum; very fine appearance. A lovely example of this rare stamp. B.P.A. Certificate (1987). S.G. 101, £29,000

£8,000-10,000

PROVENANCE:

Lord Vestey, January 2015



657

- x657 ⑤ £25 black and red overprinted 'SPECIMEN', large part original gum; pencil notation on reverse. S.G. 102s, £1,950 £700-900



658



659



660

- x658 ⑤ £50 black and brown overprinted 'SPECIMEN', large part original gum. S.G. 103s, £2,500 £800-1,000
- x659 ⑤ £75 purple and grey overprinted 'SPECIMEN', part original gum. S.G. 104s, £4,500 £1,000-1,500
- x660 ⑤ £100 red and black overprinted 'SPECIMEN', part original gum; pencil notation on reverse. S.G. 105s, £5,000 £1,500-2,500

KUWAIT



Ex 661

- x661 ④ 1929-39 unmounted mint selection including 1929-37 3a. carmine, 3a. blue, 4a. sage-green, 8a. reddish purple and 1r. to 10r., 1939 to 15r. and 1929-33 Officials 1a. to 10r., fine. Cat. £1,400+ £400-600

LABUAN



662

x662 ©

1879 (May) 2c. blue-green, 6c. orange-brown, 12c. carmine and 16c. blue, each a top marginal example handstamped "SPECIMEN" (Type D8), all mounted in the selvage only. Wonderfully fresh and very rare. S.G. 1s-4s

£700-900



663

x663 ★ ㊞

1892 'TWO/CENTS' on 40c. ochre variety **surcharge inverted**, a complete sheetlet of ten missing only a small piece of selvage from the upper right corner, a couple of hinge remainders and hinge reinforcement in places leaving eight stamps unmounted; some peripheral damage to the margins only including thinning and some creases. nevertheless a striking multiple. S.G. 49a, £4,500

£1,000-2,000



664

x664 ★

1900-02 2c. black and green horizontal pair, variety **imperforate between**, large part original gum; fine and scarce. S.G. 111a, £3,000

£800-1,000

LEEWARD ISLANDS

- x665 ★ 1890-1954 mint collection on stockpages including 1890 set to 5/-, 1897 Jubilee set (the 5/- signed H. Bloch), 1902, 1905 and 1907 sets, 1912-22 set to 5/-, 1921-32 set to £1, 1938-51 set to £1, 1954 set to \$4.80 etc., fresh and fine. Cat. £2,200+ £500-700

MALTA

666

- x666 ☉ 1919 (6 Mar.) MCA 10/- black, unmounted mint; very slightly toned gun, otherwise of fresh appearance. Signed E. Diena and with his Certificate (1982). S.G. 96, £3,250 £800-1,000

MALAYA**Straits Settlements**

Ex 667

668

- x667 ★ 1867 India surcharge set of nine to 32c. on 2a. yellow; small part to part original gum, fresh and good to fine. S.G. 1-9, £5,000+ £1,500-2,500

- x668 ☉ 1867-72 CC 2c. brown, 4c. rose, 6c. lilac and 8c. orange, each handstamped 'SPECIMEN' (Type D5), part original gum; a few minor faults though rare £250-350

PROVENANCE:

Tay Peng Hian, November 1986



669



670

- x669 ○ 1880 (Mar.) '10/ cents' on 30c. claret, type jj, [R.8/5], lightly cancelled, one short perf. at foot and minor creasing at top, nevertheless a much above average example of this rare stamp which only occurs once in the setting. S.G. 32, £2,500 £500-700

- x670 ★ 1894 3c. on 32c. rose, variety **surcharge omitted**, lightly mounted mint, fresh and fine. Rare. B.P.A. Certificate (2000). S.G. 94a, £4,500 £1,500-2,000

Malaya, Straits Settlements - *contd.*



671

x671 ★

1899 (Mar.) 'FOUR CENTS' on 5c. carmine, variety **surcharge omitted**, clipped perfs at foot and light vertical gum bend otherwise fresh and fine with large part original gum. A very fine example of one of the key stamps of the Straits Settlements. S.G. 109a, £40,000

£10,000-15,000

PROVENANCE:

William Frazer, June 2003

Note: We record nine examples of this variety, one of which is in the Royal Philatelic Collection



672

x672 ★

1902-03 CA \$100 purple and green on yellow, fresh lightly mounted mint; a choice example of this rarity. Signed A. Diena and accompanied by his Certificate (1973). S.G. 122, £22,000

£8,000-12,000



673



674



675

- x673 ★ 1906-12 MCA \$25 purple and blue on blue, large part original gum; some lightly toned perfs in places, otherwise fine. B.P.A. Certificate (1977). S.G. 168, £3,750 £1,000-1,500
- x674 ★ 1906-12 MCA \$25 purple and blue on blue, large part original gum; fine. A.P.S. Certificate (2007). S.G. 168, £3,750 £1,200-1,500
- x675 ☉ 1906-12 MCA \$500 purple and orange overprinted 'SPECIMEN', part original gum; fine and rare. S.G. 169s, £4,750 £1,500-2,000

1912-23 Watermark Multiple Crown CA



Ex 676

- x676 ☉ Largely complete set of twenty-six to \$5 including white back printings and some other shades; each overprinted "SPECIMEN"; part original gum, chiefly good to fine. S.G. 193s-212s, £1,700+ £500-600



677



678



679

- x677 ☉ \$25 purple and blue on blue overprinted 'SPECIMEN', lightly mounted mint. S.G. 213s, £650 £150-200
- x678 ★ £25 purple and blue on blue, large part original lightly toned gum; signed E.D(iena). S.G. 213, £3,250 £700-900
- x679 ☉ \$100 black and carmine on blue overprinted 'SPECIMEN', large part original gum. S.G. 214s, £1,500 £500-700

Malaya, Straits Settlements, 1912-23 Watermark Multiple Crown CA - *contd.*



680

681

- x680 © \$500 purple and orange-brown overprinted "SPECIMEN", toned perf at top and some tiny tone spots on the reverse of some other perfs; also 1921-33 Script \$25 purple and blue on blue and \$100 black and carmine on blue, both overprinted "SPECIMEN" and with small marks on reverse. S.G. 215s, 240bs, 240cs; £6,925 £700-900
- x681 © \$500 purple and orange-brown overprinted 'SPECIMEN', large part original gum. S.G. 215s, £5,500 £1,000-2,000

1921-33 Watermark Multiple Script CA



682



683



684

- x682 ★ \$25 purple and blue on blue, large part original gum; fine. S.G. 240b, £1,400 £500-600
- x683 © \$100 black and carmine on blue overprinted 'SPECIMEN', large part original gum; light corner gum bend at lower right, otherwise fine. Scarce. S.G. 240cs, £1,000 £300-400
- x684 ★ \$100 black and carmine on blue, minute paper inclusion, fresh and fine with large part original gum. S.G. 240c, £10,000 £3,000-5,000

PROVENANCE:
Sir Gawaine Baillie, November 2006



685



686

- x685 © \$500 purple and orange-brown overprinted 'SPECIMEN', large part original gum; fine and scarce. S.G. 240ds, £5,000 £1,000-2,000
- x686 ★ 1922 Malaya-Borneo Exhibition \$1 black and red on blue, variety **no hyphen**, lightly mounted mint; 'Rhaeticus' handstamp on reverse. S.G. 247e, £2,000 £500-700

Revenue Stamps



687

x687 ★

1938 \$25 purple and blue on blue, inscribed 'REVENUE/REVENUE', large part original browned gum; scarce. S.G. F1, £1,400

£300-500



688

x688 ★田

1938 \$100 black and carmine on blue, a **block of four** with large part original browned gum; a few split perfs at foot and the lower right stamp with slightly rounded corner and with thin at right. Very fine appearance and the largest recorded mint multiple of this scarce stamp

£7,000-9,000

Malaya - *contd.*

Federated Malay States



689

x689 ★

1904-22 MCA \$25 green and orange, large part original gum. S.G. 51, £2,250

£600-800

British Military Administration



690

x690 ○

1945 \$25 red and brown and \$100 dull purple and ultramarine, both neatly cancelled by "STAMP OFFICE/KUALA LUMPUR" double-ring d.s., the former with some very light toning on reverse, otherwise fine and both of excellent appearance. Barefoot 1-2

£150-250

SPINK LIVE

Spink Live is now running on a new and improved bidding platform
 Accessible online through www.spink.com and also available iOS and Android devices
 Bidding on 'Spink Live' remains free of charge




 Download on the
App Store


 GET IT ON
Google Play

MY ACCOUNT

-  Login
-  Consign An Item
-  Watched Lots
-  My Bids

- ☒ Medals
- ☒ Stamps
- ☐ Watches
- ☒ Whiskies & Spirits
- ☒ Wines

Lot 3  SEAL, 5 songs, including all US\$7,000

Lot 4  RANDY CRAWFORD & JOE SAMPLE, 4 US\$7,000

Lot 2010 - CURRENT B

Slide to bid €

CURRENT HISTORY

 Click to Login / Register

 Tick your Interests

 Scroll the Lots

 Slide to Bid

For any enquiries or further assistance please contact:
 Tel: +44 (0)20 7563 4112 | Email: spinklive@spink.com

SPINK

WHERE HISTORY IS VALUED

Johore



691

x691 ⊕ B

1904-10 \$50 green and ultramarine and \$100 green and scarlet, both in mint marginal blocks of sixteen, the \$100 from the lower left corner of the sheet, full original gum and very fresh appearance; striking and rare multiples. Signed A. Diena in the margins and accompanied by his Certificate (1973) for both. S.G. 76 and 77, £18,000

£7,000-10,000



692

x692 ©

1926 Script \$500 blue and red, overprinted 'SPECIMEN', large part original gum. S.G. 128s, £1,300

£400-500

Malaya - *contd.*

Kedah

x693 ★

1912-49 mint collection on Hagner leaves including 1912 MCA 1c. to \$5 set of fourteen (2, one overprinted "SPECIMEN"), 1919-21 1c. to 25c. set of six (2, one overprinted "SPECIMEN"), 1919 50c. on \$2 and \$1 on \$3, 1921-32 Script 1c. to \$5 set of fifteen (2, one overprinted "SPECIMEN") and additional mint with 3c. **watermark inverted**, 1922 Exhibition 1c. to 50c. complete, 1922-40 1c. to 35c. set of eight (2, one overprinted or perforated "SPECIMEN") with additional 6c. blocks of twelve, seven and six, 1937 10c. to \$5 set of nine (2, one perforated "SPECIMEN") with additional mint 50c. marginal block of six, \$1 and \$2 blocks of four and \$5 corner block of six, 1938-40 1c. (25 including a block of eight and a used block of four) and 2c. (10 including a block of four) and 1948 Wedding \$5 blocks of four (2, one from lower right corner with plate number); gum toning etc., in various degrees throughout, heavy in places though mostly of fine appearance. Cat. £11,000+

£1,500-2,500

PROVENANCE:

Dr. Chea Jin Seng

Kelantan



Ex 694

x694 ★ ㊞

1911-15 \$2, \$5 and \$25 in marginal blocks of ten (5x2), fresh and fine mint. S.G. 10-12, £555

£100-150



Ex 695

x695 ★

1937-40 Script set of fifteen to \$5, very lightly mounted mint, a few unmounted; slightly toned gum, otherwise fresh and fine appearance. S.G. 40-54, £1,600

£400-600

Negri Sembilan



696

x696 ★田

1935-41 Script 6c. scarlet marginal plate number block of four from the foot of the sheet, the lower left stamp with variety **stop omitted at right**, one shortish perf otherwise fine mint, the lower pair with variety unmounted; a fine positional piece. S.G. 27/27a, £954+

£300-400

Pahang



697

x697 ★

1935 Script \$25 purple and blue on blue inscribed 'REVENUE/REVENUE', a fine unused example of this scarce high value; lightly toned gum

£500-600

THE 'DOYEN' COLLECTION

3 October | LONDON | 10 AM



Malaya - *contd.*

Selangor



698

x698 ★

1897 \$25 green and orange, a unused example with part original disturbed gum; well-centred and scarce. S.G. 66, £5,000

£700-900



699

x699 田

1941 Script \$1, \$2 and prepared for use but not issued \$5, all in unmounted mint blocks of four, \$2 with plate number; usual streaky and stained gum. S.G. 86-87 and footnote after S.G. 87, £1,016+

£300-500

Trengganu



Ex 700

x700 ⑤

1910-19 MCA set to \$25 and 1921-41 Script part set to \$3 (no perf. specimen 3c., 8c., \$1 or \$5) and \$25 and \$50, all overprinted 'SPECIMEN'; large part original gum, fine. S.G. 1s-18s, 26s-43s, 45s-46s; £2,000+

£600-800

x701 ★

1910-41 mint selection (51) on stockpages, including 1910-19 1c. to \$5 large part original gum, \$25 overprinted "SPECIMEN", 1921-41 Script 1c. to \$3 with shade of the \$3, 1937 Postage Due set., etc., chiefly fine

£200-400

1921-41 Watermark Multiple Script CA



- x702 © Part set of nineteen to \$100, each overprinted or perforated 'SPECIMEN' (no 3c. reddish brown, 8c. or \$5), part to large part original gum; fine and fresh appearance. S.G. 26s-47s, £2,500+ £600-800
- x703 ★ \$50 green and yellow, part original gum; fresh and fine appearance. Rare. S.G. 46, £3,250 £800-1,000
- x704 © \$100 green and scarlet, overprinted 'SPECIMEN', large part original gum. S.G. 47s, £1,100 £400-500

MAURITIUS

1848-49 Post Paid Issue



- x705 ○ 1d. orange-vermilion, early impression, with large to huge margins on three sides and an uneven margin to the right torn from the sheet at top and bottom just touching the design; lightly cancelled and fresh colour. S.G. 7, £7,000 £700-900
- x706 ○ 1d. dull vermilion, intermediate impression, used with concentric circles cancellation and part manuscript; large even margins; a few minor faults, and 2d. blue, just clear to touching the design on all sides, lightly cancelled. S.G. 11 and 14, £6,500 £600-800
- x707 ★ 1d. red on greyish paper, worn impression, unused vertical pair, [7/10], with very large even margins, tiny closed tear and small stain mark at top of upper stamp; scarce. Edgar Mohrmann Certificate (1964). S.G. 16, £8,000 £2,000-4,000
- x708 ○ 1d. red, worn impression, group of used comprising a vertical pair with boxed 'INLAND' cancellation in black, two singles with similar cancellations and good to large margins, two further examples with concentric circle cancellations, and a final example with c.d.s; an interesting group, mixed condition with a few faults. S.G. 16-19 group, £5,000+ £500-700

Mauritius, 1848-49 Post Paid Issue - *contd.*



709



710

- x709 ★ 1d. red-brown on grey paper, early-worn impression, an unused example which has been regummed; large margins, slightly soiled at upper right. S.G. 17, £8,000 £700-900
- x710 ○ 1d. red, latest impression vertical pair cancelled by three strikes of 'PAID' circular stamp, good to large margins; a couple of light horizontal creases. S.G. 23, £1,600 £300-400

-
- x711 1858-61 mint and used selection on two stock pages including 1858 'FOUR-PENCE' green used, 1858-62 4d. green (2), 6d. vermilion (6 including a pair), 9d. dull magenta, all unused along with at least one used example of each value and prepared for use but not issued red-brown (3) and blue (7, including a pair), 1859-61 6d.. blue, 6d. dull purple-slate and 1/- yellow-green both mint and used, 6d. dull purple-slate block of fifteen from the left of the sheet and 1/- vermilion used (6 including a pair), etc.; condition a little mixed though plenty good to fine £800-1,200



Ex 712

- x712 1858-1910 mint and used collection including 1858 "FOUR-PENCE" green used, 1858-62 4d. green used, 6d. vermilion unused (4), 9d magenta pair used on piece and unissued red brown and blue (3, also blocks of four and nine), 1859-61 6d. blue used (2), 6d. dull purple-slate unused (also block of twelve) and used and 1/- used (2), 1859 Lapirot 2d. blue used, 1863-72 to 1/- mint and to 5/- used, 2d., 4d., 5/- and 1/- on 5/- each overprinted 'CANCELLED', 1878 surcharge set of nine mint, other surcharges, 1879-80 set of nine mint and used, 1900-05 5r. mint, etc.; chiefly good to fine £1,000-2,000



Ex 713

x713 ★

1858-1935 mint collection on album pages including 1858-62 (4d.) green and (6d.) vermilion, 1860-63 no wmk 6d. green, 1863-72 CC 1d. to 5/-, 1876-78 surcharges, 1879-80 CC set to 2r.50c., 1883-94 CA to 50c., 1900-05 set to 5r., 1910 set to 10r., 1913-22 set to 10r., 1921-34 set to 10r., Express Delivery and Postage Due sets, etc.; chiefly good to fine, condition a little mixed early on with some minor faults such as toning. Cat. well in excess of £6,000

£1,500-2,500

1859 Lapirot Issue



714



715



716



717

x714 ○

2d. blue, early impression, [8] showing reversed 'N' of pence, used with barred oval; minor faults including a thin and a tiny tear at right, fine appearance. S.G. 37, £3,250

£250-350

x715 ○

2d. blue, early impression [2] clear to large margins, cancelled by barred oval; fine. S.G. 37, £3,250

£600-800

x716 ○

2d. blue, two used examples, one early impression cancelled by part boxed 'INLAND' cancellation with large even margins and an intermediate impression cancelled by c.d.s. with large margins; tiny corner crease at lower right. R.P.S. Certificate (1966) for the latter. S.G. 37, 38; £4,650

£800-1,000

x717 ○

2d. blue, worn impression, [5], large even margins cancelled by oval of bars; tiny thin in the margin at bottom right. S.G. 39, £900

£200-300

x718 ○

2d. blue, worn impression, group of four used examples; one with three margins and touched at top and the others with one or two margins, all quite neatly cancelled with oval of bars or boxed cancellations. S.G. 39, £3,600

£300-500

1859 Sherwin Issue



719

x719 ○

2d. deep blue with four clear margins and cancelled by crisp strike of oval of bars; thinned and repaired as per R.P.S. Certificate (1951). S.G. 40, £8,000

£800-1,000

Mauritius - *contd.*

1859 Dardenne Issue



720



721



722



723

- x720 ○ 1d. red, good to large margins cancelled by 'PAID' circular cancellation; fine. S.G. 41a, £1,700 £500-600
- x721 ○ 1d. dull vermilion, clear to good margins and cancelled by oval of bars leaving most of the design clear. R.P.S. Certificate (1958). S.G. 42, £1,400 £400-500
- x722 ○ 2d. blue with huge margins on three sides and clear at top, cancelled by 'PAID' circular cancellation; fine. S.G. 43a, £950 £250-350
- x723 ○ 2d. pale blue, large even margins and cancelled by 'PAID' circular obliteration; fine. Guilio Bolaffi (1972) and Alberto Diena (1972) Certificates. S.G. 4, £850 £200-300



Ex 724

- x724 ○ 2d. pale blue group of used examples (5) including two horizontal pairs; most with four margins, both pairs touched on just one side; all cancelled by barred oval and in mixed condition, some a little toned. S.G. 44, £5,950 £800-1,000

- x725 ★ 1859-1977 mainly mint collection in an album including a range of Britannia issues with 1859-61 1/- vermilion (poor) and 1/- yellow-green, 1863-72 values to 10d., 1878 to 2r.50, 1883-94 to 50c., 1886 2c. on 38c., 1891 2c. on 17c., 1900-05 set to 5r., 1902 to 2r.50, 1904-07 to 1r., 1910 to 10r., 1913-22 to 10r. (7), 1921-34 to 10r., 1938-49 to 10r. (2), etc.; mixed condition though plenty good to fine £800-1,000



Ex 726

- x726 1860-1924 mint and used selection in a stockbook including 1860-63 set to 1/- (both mint and also used, 1863-72 set to 5/- both mint and used, 1876 "HALF PENNY" on 9d. purple with **surcharge inverted**, 1878 surcharge set both mint and used, 1879-80 set to 2r.50 both mint and used, 1891 surcharge errors including **inverted** and **double** (mint and used) and 2c. on 4c. block of four all with **surcharge double, one inverted**, 1902 12c. on 36c. with **surcharge inverted** mint and 1924 50r. unused (regummed); a useful and valuable lot in mixed condition, some toning in places and some unused without gum. Cat. £8,000+ £1,500-3,000

NATAL

x727

1862-1908 mint and used collection on album pages including 1859-63 range of 1d. unused and used, 3d. unused and used and 6d. used, 1862 1d. rose-red unused, 3d. blue and 6d. violet plate proofs and 6d. rose plate proof block of four, 1870-73 'POSTAGE/POSTAGE' overprint range of 1d. and 3d. used examples, 1875-76 'POSTAGE' overprints range of used examples, 1877-79 'POSTAGE/HALF-PENNY' on 1d. yellow range of unused and used, a range of other 'POSTAGE' overprints, 1874-79 and other issues in blocks of four and larger, a used range with 1874 and 1882 issues, 1902 with values to 1/- mint and £1 used, etc.; an interesting lot worthy of close examination

£600-800

NAURU

728

x728 △

1916-23 Waterlow 10/- indigo, used and tied to small piece of Registered letter by Nauru c.d.s.; fine and scarce. S.G. 18, £5,000

£1,000-1,500

NEW BRUNSWICK

729



730

x729 ★

1851-60 1/- reddish mauve, an unused example without gum; four generous margins, tiny filled thin at top; fine and fresh appearance for this rare stamp. S.G. 5, £22,000

£2,000-4,000

x730 ★

1860-63 Charles Connell 5c. brown, prepared for use but not issued; irregular perfs and partially perforated at top, trimmed perfs at left; nevertheless a presentable example of this rare stamp most of which were destroyed. Vincent Greene Certificate (1981). S.G. 13, £10,000

£1,500-2,500

NEW ZEALAND



731

x731 ★

Postal Fiscal: 1931-40 Cowan paper £3.10/- rose, unused with large part original gum.
R.P.S. Certificate (1994). S.G. F165, £2,250

£500-600

NEWFOUNDLAND



732

x732 ⊕

1857-64 8d. scarlet-vermilion block of six from the foot of the sheet, mounted in the margin only; a few light natural gum wrinkles. Fine and a handsome multiple. Guilio Bolaffi Certificate (1966). S.G. 8, £2,400

£600-700



733

x733 ○

1857-64 1/- scarlet-vermilion, four close to good margins, fine used with light barred cancellation; fine and scarce. B.P.A. Certificate (2004). S.G. 9, £9,000

£2,500-3,500



Ex 734

x734

1857-1944 comprehensive mint and used collection on album pages including 1857-64 1d. brown-purple unused, 2d. scarlet-vermilion used with R.P.S. Cert., 4d. scarlet-vermilion used with R.P.S. Cert., 8d. scarlet-vermilion unused and used with Philatelic Foundation Cert., 1860 including 4d. and 6d. orange-vermilion both used and 1/- orange-vermilion used with B.P.A. Cert., 1862-64 including 1d. chocolate-brown unused and 8d. block of four unused along with a huge range of mint and used, 1865-70 with 5c. brown and 12c. red-brown unused, 1868-73 with all values to 6c. unused, double perforations, forgeries, re-entries, various shades and printings of this issue with a lot of duplication, 1897 set to 60c., 1897-1918 set to 5c., 1910 set of eleven to 15c., 1911 set of eleven to 15c., 1919 Caribou set to 36c. both mint and used, 1920 Surcharges, most later sets mint and used to 1944, 1919 Air \$1 on 15c. unused, 1921 Air 35c. used on piece and used on cover, 1933 \$4.50 on 75c. used, etc.; a huge collection with high catalogue value, condition mixed in places though with plenty good to fine

£6,000-8,000

x735

1860-1945 valuable mint and used collection on album pages including 1860 3d. mint and used and 6d. used (2), 1862-64 New Colours with values to 1/- mint, 1865-70 with values including 2c. (3) and 13c. mint and most values used, 1868-73 mint and used, 1876-79 rouletted set of four both mint and used, 1887 set of six mint and used, 1896-98 set of six both mint and used, 1897 set of fourteen both mint and used, 1897-1918 set of eight to 5c. blue mint and used, 1910 set mint and used, 1911-16 set to 15c. mint and used, 1919 Caribou set to 36c. with listed shades mint and also used, 1919 and 1921 Air with varieties mint (9), 1923-24 set to 24c., most later sets, Airmails, imperforate pairs and blocks of the 1932 issues, Postage Dues, etc.; a virtually untouched collection in good to fine condition; huge catalogue value

£2,000-3,000

Newfoundland - *contd.*



736

x736 ★田

1937 Coronation 48c. slate-purple, line perf. 13½ marginal vertical strip of four from the foot of the sheet, the upper pair variety **imperforate between**, fine mint. Rare. S.G. 267cb, £3,750

£1,500-2,000

PROVENANCE:

Graham Cooper, December 2016

SPINK
WHERE HISTORY IS VALUED



OFFICIAL SPONSOR OF VIRTUAL STAMPEX INTERNATIONAL 2020

01-03 OCTOBER 2020 | SIGN UP FOR THE SHOW AT WWW.STAMPEX.VFAIRS.COM

NORTH BORNEO



Ex 737

x737 ⑥

1888-92 25c. colour trials (13) all in different unadopted colours; unmounted original gum. Fine and attractive. S.G. 45

£150-250



Ex 738

x738 ⑥

1888-92 50c. colour trials (9) each in a different unadopted colour; unmounted mint, fine and attractive. S.G. 46

£150-250



739

x739 〇田

1894 Pictorial 8c. black and dull purple, perf $13\frac{1}{2}$ -14, a left marginal block of four, variety **imperforate between vertical pairs**, cancelled to order with oval of bars, normal slightly ragged perfs, fine. S.G. 74ba, £600

£150-250



740

x740 ★

1904-05 '4/cents' on \$10 brown, variety **surcharge inverted**, marginal from the left of the sheet; large part toned original gum, very rare. R.P.S. Certificate (1998). S.G. 157a, £3,000

£1,000-1,500

North Borneo - *contd.*



Ex 741

x741 ★

1918 (Aug.) "RED CROSS/TWO CENTS" 1c. to \$10 set of seventeen, mostly fine mint. S.G. 214-34, £1,200

£400-500



Ex 742

x742 ★

1939 Pictorial set of seventeen to \$5, slightly toned, very lightly mounted mint. S.G. 303-17, £1,400

£300-400

x743 ★[Ⓐ]

1939-52 mint collection on album pages including 1939 set to \$5, 1941 War Tax set, 1945 BMA set with additional \$2 showing guide mark in "OL" of "DOLLARS", 1947 set, 1950-52 set with both 50c. and Japanese Occupation 1944 1c. to 25c. mint; the last set with a few tone marks, all others fresh and fine. Cat. £2,000+

£300-400

NORTHERN NIGERIA



Ex 744

x744 ★

1900 CA set of nine to 10/-, large part original gum. S.G. 1-9, £550

£150-250

NORTHERN RHODESIA



Ex 745

Ex 746

- x745 ☉ 1925-29 part set of sixteen to 20/- (no perf. specimen 3/-) all overprinted 'SPECIMEN', large part original gum. S.G. 1s-17s, £1,200 (for the complete set) £300-400
- x746 ★ 1925-29 part set of sixteen to 20/- (no perf. specimen 3/-) all overprinted 'SPECIMEN' and the issued set of seventeen, all with toned gum. S.G. 1s-17s, 1-17; £1,900 £500-600



747

- x747 ★ 1938 1½d. carmine-red horizontal pair, variety **imperforate between**, unused with part original gum; some light stains on reverse which are just apparent in the upper corners, nevertheless generally of fine appearance and a great rarity. S.G.29a, £30,000 £5,000-7,000

PROVENANCE:

Spink auction, October 2017 when this was part of a block of four

Note: This is believed to come from the sheet purchased by Mr. Adam Thom at Mulfulira Post Office in 1938. This and a further pair, a block of four (ex. Graham Cooper) together with the unique block of twelve offered by Spink in April 2015, are the only examples of this very rare variety known

NOVA SCOTIA



748

x748 ★

1851 1d. red-brown on bluish paper, unused without gum, good to large margins with portion of the adjoining stamp visible at right; horizontal crease at top and light soiling in places, fresh appearance. S.G. 1, £3,000

£400-500



749

x749 ○

1851-60 3d. bright blue and 6d. yellow green on bluish paper, lightly cancelled; clear to large margins; the 6d. yellow green with slightly irregular margin at upper left, but clear of the design; also New Brunswick 1851-60 6d. yellow lightly used and with four clear margins. S.G. 3 and 5 and New Brunswick 3; £1,700

£400-600

NYASALAND



Ex 750

x750

1891-1911 mint and used collection on pages including 1891 B.C.A. set of twelve to 10/- mint and a few additionally used, 1892-95 3/- on 4/- and 4/- on 5/- both used, 1895 no wmk set to 5/- used and £1 overprinted 'SPECIMEN', 1896 CA set to 5/- mint/used and £1 overprinted 'SPECIMEN', 1897-1900 set to £1 mint/used and £10 overprinted 'SPECIMEN', 1898 Cheque stamps 1d. vermillion and blue Setting I and Setting II both used and perf. 12 used on piece, 1903-04 set to £1 mint, 1908-11 MCA set to £1 mint; chiefly good to fine. Cat. £6,000+

£1,000-1,500



Ex 751

- x751 © 1895 set of eight to 5/- each handstamped 'SPECIMEN' (BEC2), large part original gum. S.G. 21s-28s

£150-200



Ex 752

753

754

- x752 © 1895 no watermark 2/6d. used and cancelled by 'FORT LISTER' c.d.s., R.P.S. Certificate (2002), and 1896 CA/CC set to £1 overprinted 'SPECIMEN'; part original gum. S.G. 26, 32s-40s, £825

£200-300

- x753 © 1896 CC £25 black and green overprinted 'SPECIMEN', part original gum. S.G. 42s, £450

£150-200

- x754 ○ 1897-1900 CC £10 black and yellow, cancelled by 'BLANTYRE' c.d.s., fine. S.G. 52, £2,750

£800-1,000



755

Ex 756

- x755 © 1908-11 CA £1 purple and black on red and £10 purple and ultramarine, both overprinted 'SPECIMEN'; large part original gum, the £10 with slight surface rubbing as per R.P.S. Certificate (2010). S.G. 81s and 82s, £1,100+

£400-500

- x756 © 1913-21 MCA set of thirteen to £1 including 1/- emerald and 1921-33 Script, set of ten to 10/- all overprinted 'SPECIMEN' (no 1/-, 4/- or 5/-), part to large part original gum. S.G. 83s-98s, 100s-113s group, £700+

£200-300

Nyasaland - *contd.*



757

x757 ★

1913-21 MCA £10 purple and royal blue, fresh with part original gum. Fine and rare.
S.G. 993, £4,000

£1,500-2,500

ORANGE RIVER COLONY



758

x758 ★田

1905-09 MCA 4d. scarlet and sage-green, variety 'POSTAGE' for 'POSTAGE', in a corner block of four, large part original gum, the stamp with variety remaining unmounted; an attractive positional piece. S.G. 150a £200+

£80-100



The Royal Philatelic Society London

We are pleased to receive proposals for membership of the Society which is through election.

If you are interested in membership, please contact us at
secretary@rpsl.org.uk

If you have no proposer or seconder, please contact us for further information.

Tel: 00 44 (0)20 7486 1044 | www.rpsl.org.uk

The world's oldest and most prestigious philatelic society, established 1869, with over 2,000 members in more than 70 countries.

Extensive premises in London's West End house the Society's superlative library, plus Museum and Archive, and provide first-class meeting facilities.

The Society's Online Catalogue provides access to over three-quarters of a million philatelic indexes to members world-wide.

A fascinating programme of displays and meetings throughout the year, supplemented by regional meetings and gatherings at major international events.

The Society publishes ten times a year its own journal, *The London Philatelist*, containing articles of outstanding philatelic research, in addition to publishing major philatelic works.

We are honoured to have Her Majesty Queen Elizabeth II as our Royal Patron

PAKISTAN

Bahawalpur



759

x759 ★

1947 Crescent Moon and Star overprint on stamps of India set of seventeen to 10r., large part original gum; handsome examples of these very rare overprints. Murray Payne Certificate (2009). S.G. 1-14, £14,000

£5,000-6,000

Note: This set was issued during the interim period, following the implementation of the Indian Independence Act, during which time Bahawalpur was part of neither of the two Dominions created.

PRINCE EDWARD ISLAND

x760

1861-70 mint and used collection on pages including 1861 2d. rose used on cover with R.P.S. Cert., 1862-69 to 9d. mint, 9d. used and 3d. blue pair used on cover with R.P.S. Cert., 1870 2d., 3d. and 4d. mint, 1872 set to 12c. and 3c. used on cover; a useful assembly in chiefly fine condition

£350-450

RHODESIA



761

x761 ★

1892-93 £5 sage-green and £10 brown (both marginal) and 1898-1909 £5 deep blue (marginal) and £10 lilac; all unused without gum from the Waterlow archives, an attractive group. S.G. 12-13, 92-93; £11,100

£800-1,200



762

x762 ○

1892 £10 brown cancelled by 'E' in diamond of bars; fine. S.G. 13, £700

£150-200

THE "DUBOIS" COLLECTION OF JAMAICA POSTAL HISTORY AND STAMPS



19 NOVEMBER 2020 | LONDON

Considered to be the greatest collection of Jamaica ever assembled



Ex 763

x763 ©

1896-97 Die II 4d., 2/-, 2/6d., 5/- and 10/- all but the 2/6d in marginal block of four, each handstamped italic 'Specimen' (Samuel R3); the 2/6d with hinge reinforcement, others very fine and unmounted, hinged in the margins only; these are the only values from this issue with this handstamp. S.G. 44s-50s group

£400-600

PROVENANCE:

"County", November 2003

1898-1908



764



765



766

x764 ★

1/- bistre vertical pair, variety **imperfurate between**, large part original gum; a few light grey offset marks to gummed side not affecting the fine and fresh appearance of this popular and scarce variety. B.P.A. Certificate (1975). S.G. 84a, £3,250

£1,000-1,500

x765 ★

£5 deep blue, a fresh unused example with part original gum; scarce in this condition. S.G. £3,250

£400-600

x766 ★

£10 lilac, an unused example from the top of the sheet with large part original gum; light diagonal crease at lower left not affecting the fine appearance. R.P.S. Certificate (2009). S.G. 93, £3,500

£600-800

Rhodesia - *contd.*

1910-13 Double Head Issue



767

x767 ©

½d. to £1 set of eighteen all overprinted "SPECIMEN" (Samuel R7) vertically at centre, the 2½d. and 8d. perf. 13½, all the double plates being matched [25] *Lines by King's cheek*, fresh and very fine mint. A unique and highly important set

£5,000-6,000

PROVENANCE:

Don Napier, 2014

'Royal Palm', March 2018



768



769



770



771

- x768 ★ 7/6d. carmine and deep turquoise-blue overprinted “SPECIMEN” (R7) vertically at centre, variety **overprint double**, part original gum; a few ragged perfs. at left. Extremely rare with only three examples recorded £1,500-2,000
- PROVENANCE:
“Montgomery”, December 2002
- x769 ★ 7/6d. carmine and pale blue, Long Gash printing, large part original gum; fresh and very fine. Gibbs Certificate (2010). S.G. 160b £400-500
- PROVENANCE:
“Royal Palm”, March 2018
- x770 ★ 7/6d. carmine and pale blue, Long Gash printing; lovely colours and well-centred for this stamp, fine mounted mint. S.G. 160b £250-350
- PROVENANCE:
“Royal Palm”, March 2018
- x771 ★ 7/6d. carmine and pale blue, Long Gash printing, pale colours and lightly mounted; a couple of tiny tone spots on reverse and a tiny imperfection above ‘AFRICA’. S.G. 160b £150-200
- PROVENANCE:
“Royal Palm”, March 2018



772



773



774

- x772 ★ 7/6d. carmine and light blue, Long Gash printing, fresh bright colours; lightly mounted mint, very fine. Gibbs Certificate (2010). S.G. 161 £500-600
- PROVENANCE:
“Royal Palm”, March 2018
- x773 ★ 7/6d. carmine-vermilion and deep turquoise-blue, Long Gash printing; a fresh mint example with lovely bright colours; large part original gum. S.G. 161 variant ii £500-600
- PROVENANCE:
“Royal Palm”, March 2018
- x774 ★ 7/6d. carmine and bright blue, Short Gash printing, a most attractive example of this very rare stamp with rich colours and large part original gum. Gibbs Certificate (2010). S.G. 162, £4,750 £2,000-2,500
- PROVENANCE:
“Royal Palm”, March 2018

Rhodesia, 1910-13 Double Head Issue - *contd.*



775



776



777



778

- x775 ★ 7/6d. carmine and bright blue, Short Gash printing; fresh and large part original gum; light crease at upper left and two small thins towards foot, nevertheless a most attractive stamp. S.G. 162, £4,750 £1,000-1,500
- PROVENANCE:
"Royal Palm", March 2018
- x776 ★ 7/6d. bright carmine and blue, Long Gash printing; [15] *King's eyebrow line*, an unusual stamp with monochromatic frame, large part original gum. RSC "A" £500-600
- PROVENANCE:
"Royal Palm", March 2018
- x777 ★ 7/6d. bright carmine and blue, Long Gash printing; [46] *King's extra curl*, large part original gum; traces of light stains at lower left corner. RSC "A" £150-200
- PROVENANCE:
"Royal Palm", March 2018
- x778 ★ £1 crimson and slate-black, large part original gum; fine and attractive. S.G. 166a, £2,000 £500-700

1913-19 Admiral Issue



Ex 779

- x779 © ½d. to £1 set of nineteen, all overprinted 'SPECIMEN' (Type W2 or 1½d. Type W3), fine and fresh appearance, part original gum. S.G. 186s-249s group, £2,750 £800-1,000



780

- x780 ★ 1½d. bistre-brown horizontal pair, variety **imperforate between**, part original gum; a fresh example of this popular variety. S.G. 198a, £850 £400-500

ST. HELENA



Ex 781

x781

1856-1949 mint and used collection on pages including 1856 6d. blue used (2), 1864-80 with mint and used values to 1/-, 1884-94 with mint and used values to 1/- and including pairs and strips of three, 1890 set to 10d. both mint and used, 1903 and 1908 sets, 1912-16 MCA set to 3/-, mint and used, 1922-36 set to £1 mint, 1922 set of fifteen mint (15/- with diagonal gum bend) and most values used, ½d. to 5/- in corner marginal pairs with **cleft rock** variety (foxing on most values), 1934 set to 10/-, 1938-44 set to 10/-, etc.; condition a little mixed as mentioned though a very useful group for the specialist. Cat. £7,000+

£1,000-2,000



Ex 782

Ex 783

784

x782 ☉

1922 MCA set of five to £1, each overprinted 'SPECIMEN'; large part original gum. S.G. 92s-96s, £650

£150-200

x783 ☉

1922-37 Script set of sixteen to 15/-, each overprinted 'SPECIMEN'; a few low values with light tone spots in places and the 8d. with thin at top; large part original gum. S.G. 97s-113s, £1,600

£400-500

x784 ★

1922-37 Script 15/- grey and purple on blue, well-centred and with large part original gum; Signed S. Sorani and with his Certificate (1981). S.G. 113, £1,100

£400-500

x785

1937-49 specialised collection on pages including 1937 Coronation set perforated 'SPECIMEN' and the issued set used on first day, etc., 1938-44 set to 10/- including perforated 'SPECIMEN', in blocks of four, imprint blocks of eight for some values, used, used on cover, 1946 Victory perforated 'SPECIMEN', in blocks of four, used etc., 1947 Silver Wedding set in blocks of four, 1949 U.P.U. set mint and used on cover, etc.; an interesting and useful assembly for the specialist

£300-500

ST. LUCIA



786

x786 ○

1949-50 12c. claret perforated 14½ x 14, a lightly cancelled example of this scarce stamp. S.G. 153a, £550

£100-200

ST. VINCENT

x787

1861-1977 mint and used collection housed in a Devon album with a nice selection of early issues including 1861 1d. unused (2) and several used, 6d. used, 1862 6d. used (15), 1862-68 1/- unused and used (4), 1869 4d. unused and used, 1/- indigo used (3), 1/- brown unused and used (2), 1880 1d. on half of 6d. used with B.P.A. Certificate, 1880 5/- rose-red used (2), 1881 ½d. on half 6d. unsevered pair unused, 1d. on 6d. used with R.P.S. Certificate, 1890 2d. on 4d. with missing fraction bar, 1904-11 £1 used on small piece, 1913-17 with values to £1 mint (2) and used, 1921-32 values to £1 mint and used, etc.; condition a little mixed in places, plenty good to fine; high catalogue value

£2,000-3,000

SARAWAK



788

x788 ★

1892 (23 May) 'ONE/CENT' on 3c. brown on yellow vertical pair, variety **imperforate between**, small part original gum; a few minor imperfections. Scarce. S.G. 27b, £750

£200-250



789

x789 ◎

1922-23 2c., 3c., 4c., 6c. pair and 8c., each overprinted 'SPECIMEN' (SAR3) locally, fine mint. A rare group of Rajah presentation stamps

£250-350

PROVENANCE:
"Miri", March 1990

SIERRA LEONE

x790 ★

1884-1927 mint collection on album pages including 1884-91 CA set to 1/- (with some duplication), 1885-96 CC 6d. purple marginal blocks of four, 1896-97 5/-, 1903 £1 purple on red (vertical bend), 1921-27 MCA values to 5/-, etc.; chiefly good to fine

£200-300



791

x791 ★

1897 Postal Fiscal 2½d. (Type 10) on 2/- dull lilac, an unused example with part original gum; horizontal crease, nevertheless a good example of this rarity. Brandon (1997) and B.P.A. (2008) Certificates. S.G. 69, £20,000

£3,000-6,000

SOUTH AFRICA

Ex 792

x792 ©

1913-24 set of fourteen to £1 overprinted or handstamped 'SPECIMEN', large part original gum. S.G. 3s-8s, 10s-17s, £1,400

£400-500

Army Telegraph Stamps

Ex 793

x793 ★

1899-1900 1d. lilac and black to £5 lilac (no ½d. values), part to large part original gum; the 1d. and 6d. with horizontal creases. A scarce group. S.G. AT3-AT13, £1,355

£300-400

SOUTH WEST AFRICA



Ex 794

x794 ©

1923 Setting I ½d. to £1 each overprinted 'SPECIMEN', large part original gum. Scarce. S.G. 1s-12s, £1,700

£500-700

TANGANYIKA



Ex 795

x795 ©

1917-21 set of sixteen to 20r. and 1922-24 set of fifteen to £1, each overprinted 'SPECIMEN', large part original gum. S.G. 45s-61s, 74s-88s, £1,500

£500-700

Mafia Island



796

x796 ★

1915 4h. green from the foot of the sheet and 7½h., both handstamped in reddish violet, fine mint. Ceremuga Certificates (2000) for both. S.G. M2C, M3C, £425

£100-150

TASMANIA



797

x797 ©

1855 1d. carmine neatly cancelled by two part strikes of the 'CANCELLED' obliterator, close to large margins and fresh bright colour. Very rare being one of only six examples handstamped for the Hill family, this stamp being position 3. B.P.A. Certificate (1979). S.G. 14, £12,000

£3,500-4,500

PROVENANCE:

Burrus, November 1962

Dr. Conrad Latto, May 1995

Peter Jaffé, November 2006

Note: In August 1861 the printers, Perkins, Bacon & Co., provided six examples of each stamp in their possession to Ormond Hill (eldest son of Rowland Hill) for members of his family. These fascinating stamps and the story behind their appearance, have been fully described by Peter Jaffé in his book "CANCELLED" by Perkins Bacon.

TOGO



Ex 798

x798 ★

1915 Gold Coast overprint sets of twelve (2), large part original gum. S.G. H34-H46, £400

£100-200

TRANSJORDAN



Ex 799

x799 ★ 1933 set of fourteen, fine with large part original gum. S.G. 208-221, £950 £300-400

TRANSVAAL



800

x800 ★ 1903 CA £5 orange-brown and violet, large part original gum; a fine example of this scarce stamp. Holcombe (1986) and Ferchenbauer (1987) Certificates and signed by both. S.G. 259, £2,250 £700-900

TRINIDAD

x801 ★ 1851-96 mainly mint collection on album pages including 1851-55 1d. blue strip of three from the foot of the sheet, 1d. brownish-grey and 1d. deep blue horizontal pairs, 1d. brownish red and 1d. brick-red blocks of four with Philatelic Foundation Certificates., 1859 pin-perf. 14 6d. bright yellow-green block of four, 1869 CC 5/- rose-lake (2), 1883-94 CA 1d. carmine block of thirty-six from the foot of the sheet, 1896-1906 Crown over CA 5/- (3) and 10/-, 1901-06 CA 5/- (3), 1904-09 £1, Trinidad and Tobago £1 (3), etc.; condition a little mixed in places though with plenty good to fine £500-700

x802 1851-1896 mint and used selection on album pages of mainly Britannia issues including 1851-55 Blued paper 1d. purple brown, 1d. blue (2, shades) all in unused horizontal pairs, also a few used examples, White paper both mint and used examples, 1d. grey purple pair unused, 1860 worn impression 1d. red unused pair and two singles, 1859 1/- indigo unused affixed to small piece, 1859-80 with mainly used values to 1/-, 1869 CC 5/- rose-lake unused (3) and used, 1879-82 surcharges and 1896 CA 5/- to £1; condition a little mixed though a useful group £400-600

TURKS AND CAICOS ISLANDS



Ex 803

x803 ©

1909-11 MCA set to 3/- (no ¼d. rose) and 1913-21 MCA set to 3/- including 2/- on emerald back, each overprinted 'SPECIMEN'; 1909 6d. with tiny corner crease, large part original gum. S.G. 115s-126s, 129s-139s, £475

£150-200

ZANZIBAR



Ex 804

x804 ★

1895-1957 mainly mint selection on Hagner pages including 1895-96 with values including 2r., 3r. used and 5r. (2, one stained), 1895-96 Provisional 2½ on 2a. pale blue, 1896 British East Africa values to 7½a., 1896 with values to 5r., 1899-1901 values to 2r., 1904 set to 5r (5a. and 8a. used), 1908-09 including 10r.-30r. and 200r., 1913 to 100r., 1914-22 MCA to 5r., 1921-29 Script to 30r., 1936 New Currency etc. a useful group with some scarce items, a little gum toning in places though chiefly good. Cat. £9,000+

£2,000-4,000



The Royal Philatelic Society London

We are pleased to receive proposals for membership of the Society which is through election.

If you are interested in membership, please contact us at secretary@rpsl.org.uk

If you have no proposer or seconder, please contact us for further information.

Tel: 00 44 (0)20 7486 1044 | www.rpsl.org.uk

The world's oldest and most prestigious philatelic society, established 1869, with over 2,000 members in more than 70 countries.

Extensive premises in London's West End house the Society's superlative library, plus Museum and Archive, and provide first-class meeting facilities.

The Society's Online Catalogue provides access to over three-quarters of a million philatelic indexes to members world-wide.

A fascinating programme of displays and meetings throughout the year, supplemented by regional meetings and gatherings at major international events.

The Society publishes ten times a year its own journal, *The London Philatelist*, containing articles of outstanding philatelic research, in addition to publishing major philatelic works.

We are honoured to have Her Majesty Queen Elizabeth II as our Royal Patron

COLLECTIONS AND RANGES

x805

A selection on album pages including Antigua 1884-87 1d. carmine marginal block of six, Ascension 1924-33 Script set to 3/- mint, Bermuda 1865-1903 1/- block of four, Barbados including 1852-55 1d. blue block of six and strip of four 1873 6d. orange-vermilion marginal block of six and a block of four etc., Grenada 1881 ½d. deep mauve, block of four from the lower right of the sheet, 1886 1d. on 1/- orange bisect tied to small piece, K.U.T. with 1912-21 MCA 1r. to 5r., Nyasaland with 1897-1900 used values to £10, Nevis with values to 1/- and St. Vincent with mint and used values to 1/-; condition generally good to fine

£300-400



Ex 806

x806

A selection of singles and sets on stockcards, most ex-auction lots including Great Britain with 1840 1d. black used (2), 1867-83 10/- used, 1883-84 with values to 1/- mint, 1929 P.U.C. £1 mint, some Officials, Postage Dues, etc., Ascension with 1932 set to 5/- used, Bermuda, British Africa, British Honduras, Cayman Islands, Dominica, Falkland Islands with 1898 2/6d. used, Heligoland, Indian Feudatory States, Mauritius, New Zealand, Rhodesia with 1896-97 to 5/- mint, Trinidad with a few early issues with Certs and later values to £1 mint, etc.; a huge range with high catalogue value; mixed condition in places. Viewing recommended

£1,000-2,000



Ex 807

x807 ★

1880-1950 mainly mint British Asia collection on album pages including Bangkok 'B' overprints 2c. and 4c. (not guaranteed), Brunei with 1906 set to \$1 on 8c., 1937 set to \$10 and other part sets, Straits Settlements with 1867 India 1½c., 1868 with values to 24c., 1883-91 to 96c., 1907 set to \$1, 1908-11 set to \$5, 1912-14 set to \$5 and most other sets to 1938, Burma 1937 set to 5r., Ceylon with 1857 1d. used and 2d. unused and 6d. plate proof, 1912 set to 10r., 1921 set to 20r., etc., Hong Kong including 1863-67 2c., 4c. and 12c. mint and some other values used, later sets with values to \$2, 1938 set to \$10, Labuan with plenty of part and full sets, North Borneo including some early issues, Red Cross part sets, 1939 set to \$1, Postage Dues etc., Sarawak with 1899-1908 set to \$1, 1918 set to \$1, 1934-41 set to \$10, etc.; chiefly good to fine, high catalogue value

£2,000-4,000



Ex 808

x808 ★

A selection of mint single stamps and sets from across the British Empire including Antigua with 1921-29 MCA set to £1 (2) and Script set of eighteen (2), Bermuda 1918-22 MCA 5/-, 10/- and £1, British Honduras 1913-21 \$5 and 1922 MCA \$5 (3), British Levant 1916 set of eight to 1/-, British Solomon Islands with 1914-23 MCA set to £1 with additional £1, Dominica with 1923-33 Script set to £1 (3, with additional £1 value), Gibraltar 1904-08 MCA set to £1, Gilbert and Ellice Islands 1912-24 £1, Natal 1908 £1 (2), Southern Nigeria with 1907-11 £1 (2) and 1912 MCA £1 (2), St. Kitts-Nevis 1920-22 set to £1 (2) and Sierra Leone with sets to £1 and additional high values; chiefly good to fine. Cat. £9,500+

£2,000-4,000



Ex 809

x809

A selection of fifty-four mint and used sets and singles, ex-auction lots including Bechuanaland with 1890 ½d. vermilion with **overprint inverted** used and 1913-24 Seahorses 2/6d. (2) and 5/- mint, Cameroon 1915 1d. on 10pf. with **surcharge double**, Ceylon 1857-59 6d. used, Dominica with Specimen sets and issued sets to 5/-, Gambia, Gibraltar including 1886-87 CA set to 1/- used, 1889-96 set to 5p. mint and 1904-08 MCA set to £1 used, Gold Coast with sets and values to 20/- mint, Grenada, India including 1911-23 15r. and 25r. mint and 1912-23 Service set to 25r. mint, Malta with several full sets, Malaya with Johore 1904-10 set to \$10, Selangor 1895-99 \$5 green and blue, Trengganu 1910-19 set to \$5 and 1921-41 set to \$5, Natal, Nauru, New Hebrides, North Borneo, Nyasaland including B.C.A. 1891 set to 10/- mint and £1 used, Rhodesia 1896-97 set of nine mint, Southern Rhodesia with 1924-29 set to 5/-, ½d. and 1d. horizontal pairs both variety **imperforate between** and Postage Dues, Rarotonga, Tobago, Transvaal, Trinidad with sets to £1 mint, Postage Dues, etc.; a few minor faults and imperfections in places though generally good to fine and a valuable group

£3,000-5,000

Collections and Ranges - *contd.*



Ex 810

x810

1840-1935 mint and used collection housed in a well-filled pair of red *New Imperial* albums with most territories well represented with full or part sets and including used Great Britain with 1840 1d. black (2) and 2d. blue, Embossed 6d. and 1/-, a good range of Surface Printed and most part and full sets to 1935, Ascension with 1922 set to 3/- and 1924-27 set to 3/- all mint, Basutoland 1933 set mint, Bechuanaland with 1932 set mint, British East Africa 1890-91 set to 5r. and 1895 set to 5r. all mint, well-filled mint British Somaliland, Falklands with 1904-12 MCA set to 5/- etc., mint, Gambia, Heligoland, India with 1854 ½a. (3), 1a (2). 2a. (2) and 4a. (2) all used, 1911-22 set to 25r. mint, well filled mint Convention States, Feudatory States, K.U.T with 1903 set to 10/- overprinted 'SPECIMEN' and 1904-07 MCA set to 5r. mint, Mauritius with 1878 Surcharge set to 2r.50, 1900-05 set to 5r., North Borneo, Nyasaland with 1913-23 MCA set to £1 mint, St. Helena including 1922-27 part set to 10/- mint, South Australia, Zanzibar with 1895 values to 5r. mint and 1896 set to 5r., etc.; condition a little mixed in places, plenty good to fine; huge catalogue value

£3,000-6,000



Ex 811

x811

1840-1935 mint and used collection housed in two Schaubek *Permanent* albums including Great Britain with 1d. black and 2d. blue, Embossed values to 1/-, 1878 £1 green, 1882 £5 orange, 1892 I.R. Official £1, all used, 1902-10 set to £1 mint and 1913 Waterlow to £1 used, Antigua, Australian States, Bahamas, Barbados, Bermuda all well filled with full and part sets, Bechuanaland 1887 set to £1 mint and £5 overprinted 'SPECIMEN', British East Africa including 1890 set to 5r. mint, 1897 set to 7½a., 1897 with values to 5r., etc., British Guiana with 1850 12c. blue (cut-into), 1852 1c. magenta and 4c. blue and 1856 4c. magenta (all used with faults), Canada with Pence issues, Jubilee set with values to \$5, Cayman Islands including 1907 surcharges and 1908 2½d. on 4d. mint, Ceylon with 1857-59 with values to 2/- used, Cyprus with sets to 45pi., Falkland Islands with 1912-20 set to £1 and 1929-37 set to £1 all mint, Gambia, Gibraltar with 1886 set to 1/- used and 1903 set to £1, etc., Hong Kong with values to \$5 mint and to \$10 overprinted 'SPECIMEN', India with 1854 4a. used, Officials, Convention States, K.U.T. 1903-04 50r. overprinted 'SPECIMEN', 1912-21 set to 20r. mint, Mauritius including 1848 Post Paid 1d. and 2d. worn impressions used, 1859 Sherwin 2d. and Lapirot 2d. used, Dardenne 1d. and 2d. used, later sets to 5r. mint, etc., Natal with 1857 Embossed used group including 1d. blue used on piece with B.P.A. Certificate, New Republic values to £1, New Zealand including 1855-64 values to 1/- used, Rhodesia with 1892 Surcharge set of four mint, 1910 Double Heads to £1 mint and 1913 Admirals to £1 mint, Sierra Leone with values to £1, well-filled Transvaal, Zanzibar, Zululand including 1888-92 5/- mint and 1894-96 with £1 and £5 both overprinted 'SPECIMEN', also some South America with Colombia and Bolivia, etc. A huge unpicked collection with enormous catalogue value; condition mixed in places though plenty good to fine and with viewing highly recommended

£7,000-9,000

END OF THE SALE

SPINK

WHERE HISTORY IS VALUED

THE 'DOYEN' COLLECTION

3 October | LONDON | 10 AM



For further information please contact Iain Murphy

Tel. +44(0)20 7563 4060 | Email: imurphy@spink.com

SPINK LONDON | 69 Southampton Row | WC1B 4ET | United Kingdom

WWW.SPINK.COM



#SPINK_AUCTIONS



VIEWING & AUCTION

All of us at Spink have worked hard to ensure your visit to our viewings and auctions will be a safe experience. We have completed a risk assessment in accordance with government guidelines and will open our philatelic events to the public at the Royal Philatelic Society Headquarters in London.

Please look at the following guidance that will help us look after you during your visit.



If you are unwell for any reason we highly recommend you stay at home.



One of our staff will use an infra-red thermometer to measure your body temperature on arrival. If you are showing any symptoms, we will ask you to contact us online or by phone.



As you enter the building we will offer you a face mask that simply hooks over your ears and covers your mouth and nose. You will be offered hand sanitiser upon arrival.



Our staff will also be wearing masks.



We request that when viewing items you use the gloves which are provided.



If you prefer to book an appointment for private viewing or arrange a virtual viewing, please contact our specialists: +44(0)20 7563 4000



We ask that payments are made preferably by card or bank transfer, if not possible we will accept cheque or cash.

Iain Murphy | imurphy@spink.com
Nick Startup | nstartup@spink.com
Josh Barber | jbarber@spink.com
Tom Fell | tfell@spink.com

Thank you for your support and patience during this time.

SPINK

WHERE HISTORY IS VALUED

THE GARY DIFFEN COLLECTION OF AUSTRALIAN COLONIES ERRORS

PART II

1 October 2020 | 10 AM | London

TASMANIA | VICTORIA | WESTERN AUSTRALIA



For more information please contact **Nick Startup**

+44 (0)20 7563 4073 | nstartup@spink.com

SPINK LONDON | 69 Southampton Row | Bloomsbury | London | WC1B 4ET

STAMPS | COINS | BANKNOTES | MEDALS | BONDS & SHARES | AUTOGRAPHS | BOOKS | WINES
COLLECTIONS | ADVISORY SERVICES | SPECIAL COMMISSIONS

WWW.SPINK.COM Follow us on social media: [#SPINK_AUCTIONS](https://twitter.com/SPINK_AUCTIONS)



SPINK

LONDON
1666

Sale Venue:

The Royal Philatelic Society London
15 Abchurch Lane
2nd Floor
London EC4N 7BW
tel: +44 (0)20 7563 4121/4005
fax: +44 (0)20 7563 4037
email: auctionteam@spink.com

WRITTEN BIDS FORM

This form should be sent or faxed to the Spink auction office in advance of the sale. References for new clients should be supplied in good time to be taken up before the sale. Bids received later than one hour before the start of the sale may not be processed.



NAME _____

ADDRESS _____

POSTCODE _____

69 Southampton Row, Bloomsbury,
London WC1B 4ET
tel: +44 (0)20 7563 4108/4005
fax: +44 (0)20 7563 4037
email: auctionteam@spink.com

YOU CAN ALSO BID IN REAL TIME ON SPINK LIVE.
PLEASE DOWNLOAD SPINK LIVE APP FROM THE
APP STORE OR VISIT WWW.SPINK.COM,
REGISTER AND LOG INTO THE SALE.

SALE TITLE

**The 'Lionheart' Collection of Great Britain
and British Empire - Part XIII**

DATE

**Thursday 1 October 2020
at 2.00 p.m.**

CODE NAME

LIONHEART

SALE NO.

20013

I request Spink, without legal obligations of any kind on its part, to bid on the following Lots up to the price given below. I understand that if my bid is successful the Purchase Price will be the sum of the final bid and Buyer's Premium as a percentage of the final bid, any VAT chargeable, also postage charge and a fee for paying by card. The Rate of Buyer's Premium is 20% of the final hammer price of each lot. I understand Spink will pursue me for payment for any successful bid. In addition, I understand and consent that Spink may share my personal details relating to the default with other auction houses and live bidding platforms to protect themselves from such defaults.

All bids shall be treated as offers made on the Terms and Conditions for Buyers printed in the catalogue. I also understand that Spink provides the service of executing bids on behalf of clients for the convenience of clients and that Spink will not be held responsible for failing to execute bids. If identical commission bids are received for the same Lot, the commission bid received first by Spink will take precedence. Please note that you will not be notified if there are higher written bids received.

**BIDDERS PLEASE NOTE OUR EXTENSION CLAUSES IN OUR TERMS AND CONDITIONS FOR BUYERS
PLEASE PRINT CLEARLY IN BLOCK LETTERS AND ENSURE THAT BIDS ARE IN STERLING**

Lot Number (in numerical order)	Price Bid £ (excluding Buyer's Premium)

Lot Number (in numerical order)	Price Bid £ (excluding Buyer's Premium)

Lot Number (in numerical order)	Price Bid £ (excluding Buyer's Premium)

☐ Please hold my purchased lots for collection

TEL. HOME _____ TEL. OFFICE _____

FAX _____ E-MAIL _____

SIGNATURE _____ VAT NUMBER _____

☐ I agree to receive notifications about Spink auctions, news and events via email and direct mail

☐ I agree to receive marketing notifications related only to the following categories (please select as appropriate)

**Autographs / Banknotes / Bonds & Shares / Books / Coins / Comics / Handbags / Jewellery / Maps / Medals / Stamps / Watches /
Whiskies & Spirits / Wine / Corporate News & Events**

We will use the personal information you provide to us as set out in our privacy notice available at www.spink.com/privacy-policy

Continued ...

Thursday 1 October 2020
at 2.00 p.m.

20013

PLEASE PRINT CLEARLY IN BLOCK LETTERS AND ENSURE THAT BIDS ARE IN STERLING

[illegible][illegible][illegible]

SPINK HAS LAUNCHED ITS OWN ONLINE PAYMENT PLATFORM

ALL SPINK WEBSITE USERS CAN NOW PAY ONLINE BY CARD. SIMPLY LOG INTO YOUR SPINK WEBSITE ACCOUNT AND UNDER 'MYSPINK' PLEASE SELECT THE OUTSTANDING INVOICE YOU WOULD LIKE TO SETTLE. FOLLOW THE INSTRUCTIONS PROVIDED ON THE WEBSITE.

All Corporate cards regardless of origin and Consumer debit and credit cards issued outside the EU are subject to a fee of 3%

CARD NO:															START DATE:				ISSUE NO:				SECURITY CODE:						
SIGNATURE													EXPIRY DATE				NAME (ON CREDIT CARD)												

TYPE OF CARD: CONSUMER DEBIT ☐ CONSUMER DEBIT ☐ CONSUMER CREDIT ☐ CONSUMER CREDIT ☐ ALL CORPORATE ☐
(UK OR EU) (NON EU) (UK OR EU) (NON EU)

☐ Please charge all purchases to my card ☐ Do not charge my card. (Spink will charge your card should you default on the payment)

BIDDING INCREMENTS

Bidding generally opens below the low estimate and advances in the following order although the auctioneer may vary the bidding increments during the course of the auction. The normal bidding increments are:

Up to £100	by £5	£3,000 to £6,000	£3,200-£3,500-£3,800-£4,000 etc.
£100 to £300	by £10	£6,000 to £10,000	by £500
£300 to £600	£320-£350-£380-£400 etc.	£10,000 to £20,000	by £1,000
£600 to £1,000	by £50	£20,000 and up	Auctioneer's discretion
£1,000 to £3,000	by £100		

VAT is chargeable on the Hammer price and the Buyer's Premium of daggered (+) and (L) lots at the standard rate (currently 20%), and on lots marked (x) at the reduced rate (currently 5% on the Hammer price and 20% on the Buyer's Premium). VAT on Margin Scheme lots (identified by the absence of any VAT symbol next to the lot number) is payable at 20% on the Buyer's Premium only.

REFERENCES REQUIRED FOR CLIENTS NOT YET KNOWN TO SPINK

TRADE REFERENCES

BANK REFERENCES

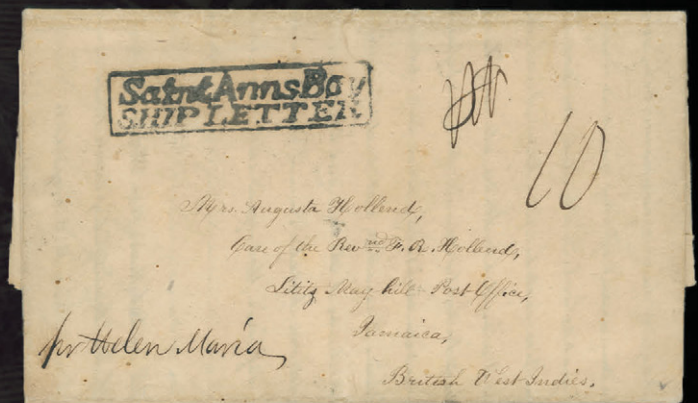
SPINK

WHERE HISTORY IS VALUED

THE "DUBOIS" COLLECTION OF JAMAICA POSTAL HISTORY AND STAMPS - PART I

19 NOVEMBER 2020 | LONDON

Considered to be the greatest collection of Jamaica ever assembled



For further information please contact

Josh Barber | +44 (0)207 563 4080 | jbarber@spink.com

David Parsons | +44 (0)207 563 4072 | dparsons@spink.com

SPINK LONDON | 69 Southampton Row | WC1B 4ET | United Kingdom

WWW.SPINK.COM



#SPINK_AUCTIONS

TERMS AND CONDITIONS FOR BUYERS

These conditions set out the terms on which we (**Spink and Son Limited** of 69 Southampton Row, Bloomsbury London WC1B 4ET (company no. 04369748)) contract with you (**Buyer**) either as agent on behalf of the Seller or as principal if we are the Seller. You should read these conditions carefully.

1 DEFINITIONS

The following definitions apply in these conditions:

Auctioneers' Margin Scheme	means a VAT margin scheme as defined by HM Revenue & Customs;
Buyer's Premium	means the charge payable by you as a percentage of the Hammer Price, at the rates set out in clause 5.1 below;
Certificate of Authenticity	means a certificate issued by an Expert Committee confirming the authenticity of a Lot;
Expert Committee	means a committee of experts to whom a Lot may be sent for an extension in accordance with clause 3.4.3;
Forgery	means a Lot constituting an imitation originally conceived and executed as a whole with a fraudulent intention to deceive as to authorship, origin, age, period, culture or source where the correct description as to such matters is not reflected by the description in the catalogue and which at the date of the auction had a value materially less than it would have had if it had been in accordance with the description in the catalogue. Accordingly, no Lot shall be capable of being a Forgery by reason of any damage and/or restoration work of any kind (including re-enamelling);
Hammer Price	means the amount of the highest bid accepted by the auctioneer in relation to a Lot;
Lot	means any item deposited with us for sale at auction and, in particular, the item or items described against any Lot number in any catalogue;
Reserve	the amount below which we agree with the Seller that the Lot cannot be sold;
Seller	means the owner of the Lot being sold by us;
Spink Group	Spink and Son Limited, our subsidiaries and associated companies.
VAT	value added tax chargeable under VAT and any similar replacement or additional tax; and
VAT Symbols	means the symbols detailing the VAT status of the Lot details of which are set out at the back of the catalogue.

2 SPINK'S ROLE AS AGENT

- 2.1 All sales undertaken by us either at auction or privately are undertaken either as agent on behalf of the Seller or from time to time, as principal if we are the owner of the Lot. Please note that even if we are acting as agent on behalf of the Seller rather than as principal, we may have a financial interest in the Lot.
- 2.2 The contract for the sale of the Lot will be between you and the Seller.
- 2.3 The Seller's sale of the Lot to you is subject to any terms and conditions, disclaimers or exclusions included with any promotional material or catalogue descriptions for the Lot, or otherwise notified to you by the Seller or us on their behalf.

3 BEFORE THE SALE

3.1 Examination of goods

You are strongly advised to examine personally any goods in which you are interested, before the auction takes place. Condition reports are usually available on request. We provide no guarantee to you other than in relation to Forgeries, as set out in clause 5.13 of these Terms and Conditions.

3.2 Catalogue descriptions

3.2.1 Statements by us in the catalogue or condition report, or made orally or in writing elsewhere, regarding the authorship, origin, date, age, size, medium, attribution, genuineness, provenance, condition or estimated selling price of any Lot are merely statements of opinion, and are not to be relied on as statements of definitive fact. Catalogue and web illustrations are for guidance only, and should not be relied on either to determine the tone or colour of any item. No lot shall be rejected on the grounds of inaccurate reproduction. No lot illustrated in the catalogue and online shall be rejected on the grounds of cancellation, centring, margins, perforation or other characteristics apparent from the illustration. Estimates of the selling price should not be relied on as a statement that this price is either the price at which the Lot will sell or its value for any other purpose.

3.2.2 Many items are of an age or nature which precludes their being in perfect condition and some descriptions in the catalogue or given by way of condition report make reference to damage and/or restoration. We provide this information for guidance only and the absence of such a reference does not imply that an item is free from defects or restoration nor does a reference to particular defects imply the absence of any others.

3.2.3 Other than as set out in clause 5.13, and in the absence of fraud, neither the Seller nor we, nor any of our employees or agents, are responsible for the correctness of any statement as to the authorship, origin, date, age, attribution, genuineness or provenance of any Lot nor for any other errors of description or for any faults or defects in any Lot. Every person interested should exercise and rely on his own judgment as to such matters.

3.3 Your Responsibility

You are responsible for satisfying yourself as to the condition of the goods and the matters referred to in the catalogue description.

3.4 Extensions – Stamps only

3.4.1 If you wish to obtain an expert opinion or Certificate of Authenticity on any Lot (other than a mixed Lot or Lot containing undescribed stamps) you must notify us in writing not less than forty-eight hours before the time fixed for the commencement of the first session of the sale. If accepted by us, such request shall have the same effect as notice of an intention to question the genuineness or description of the Lot for the purposes of clause 5.13 (Refund in the case of Forgery) of these Terms and Conditions and the provisions of clause 5.13 (Refund in the case of Forgery) shall apply accordingly.

3.4.2 Notice of a request for an expert opinion or Certificate of Authenticity must give the reason why such opinion is required and specify the identity of your proposed expert which will be subject to agreement by us. We reserve the right, at our discretion, to refuse a request for an expert opinion or Certificate of Authenticity including (without limitation) where the proposed expert is not known to us.

3.4.3 If we accept a request for an expert opinion or Certificate of Authenticity we will submit the Lot to the Expert Committee. You acknowledge and accept that the length of time taken by an Expert Committee to reach an opinion will vary depending on the circumstances and in any event is beyond our control.

3.4.4 We will not accept a request for an extension on account of condition. Any Lot described in the catalogue as having faults or defects may not be returned even if an expert opinion or Certificate of Authenticity cites other faults or defects not included in the catalogue description, other than in the case of a Forgery.

3.4.5 Should Spink accept a request for an extension under the foregoing provisions of this paragraph, the fact may be stated by the Auctioneer from the rostrum prior to the sale of the Lot.

3.4.6 It should be noted that any stamp accompanied by a Certificate of Authenticity is sold on the basis of that Certificate only and not on the basis of any other description or warranty as to authenticity. No request for an extension will be accepted on such a stamp and the return of such a stamp will not be accepted.

3.4.7 If you receive any correspondence from the Expert Committee in relation to the Lot, including but not limited to a Certificate of Authenticity, you must provide us with copies of such correspondence no later than 7 days after you receive such correspondence.

4 AT THE SALE

4.1 Refusal of admission

Our sales usually take place on our own premises or premises over which we have control for the sale, and we have the right, exercisable at our complete discretion, to refuse admission to the premises or attendance at an auction.

4.2 Registration before bidding

All bidders must be registered either by completing a registration form or creating an account online. Please be aware that we usually require buyers to present identification before making a bid at auction, undergo a credit check or provide a trade reference.

If you have not bid successfully with Spink in the past, or you are registering with us for the first time, we reserve the right to require a deposit of up to 50% of the amount you intend to spend. Such deposit will be deducted from your invoice should you be successful. If you are unsuccessful at auction, your deposit will be returned by the same means it was paid to Spink.

Some lots may be designated, prior to the auction, as "Premium Lots", which means a deposit may be required before placing a bid on the item for sale. Information will be posted on our website in such an event.

4.3 Bidding as Principal

When making a bid (**whether such bids are made in person or by way of telephone bids operated by Spink, commission or online or email bids**), you will be deemed to be acting as principal and will be accepting personal liability, unless it has been agreed in writing, at the time of registration, that you are acting as agent on behalf of a third party buyer acceptable to us.

4.4 Commission Bids

If you give us instructions to bid on your behalf, by using the form provided in our catalogues or via our website, we shall use reasonable endeavours to do so, provided these instructions are received not later than 24 hours before the auction. If we receive commission bids on a particular Lot for identical amounts, and at auction these bids are the highest bids for the Lot, it will be sold to the person whose bid was received first. Commission bids are undertaken subject to other commitments at the time of the sale, and the conduct of the auction may be such that we are unable to bid as requested. Since this is undertaken as a free service to prospective buyers on the terms stated, we cannot accept liability for failure to make a commission bid. You should therefore always attend personally if you wish to be certain of bidding.

- 4.5 **On-line Bidding**
We offer internet services as a convenience to our clients. We will not be responsible for errors or failures to execute bids placed on the internet, including, without limitation, errors or failures caused by (i) a loss of internet connection by either party for whatever reason; (ii) a breakdown or problems with the online bidding software and/or (iii) a breakdown or problems with your internet connection, computer or system. Execution of on-line internet bids on www.spink.com and Spink Live is a free service undertaken subject to other commitments at the time of the auction and we do not accept liability for failing to execute an online internet bid or for errors or omissions in connection with this activity.
- 4.6 **Telephone Bids**
If you make arrangements with us not less than 24 hours before the sale, we shall use reasonable endeavours to contact you to enable you to participate in bidding by telephone, but in no circumstances will we be liable to either the Seller or you as a result of failure to do so.
- 4.7 **Currency Converter**
At some auctions, a currency converter will be operated, based on the one month forward rates of exchange quoted to us by Barclays Bank Plc or any other appropriate rate determined by us, at opening on the date of the auction. Bidding will take place in a currency determined by us, which is usually sterling for auctions held in London. The currency converter is not always reliable, and errors may occur beyond our control either in the accuracy of the Lot number displayed on the converter, or the foreign currency equivalent of sterling bids. We shall not be liable to you for any loss suffered as a result of you following the currency converter.
- 4.8 **Video images**
At some auctions there will be a video screen. Mistakes may occur in its operation, and we cannot be liable to you regarding either the correspondence of the image to the Lot being sold or the quality of the image as a reproduction of the original.
- 4.9 **Bidding Increments**
Bidding generally opens below the low estimate and advances in the following order although the auctioneer may vary the bidding increments during the course of the auction. The normal bidding increments are:
- | | |
|--------------------|----------------------------------|
| Up to £100 | by £5 |
| £100 to £300 | by £10 |
| £300 to £600 | £320-£350-£380-£400 etc. |
| £600 to £1,000 | by £50 |
| £1,000 to £3,000 | by £100 |
| £3,000 to £6,000 | £3,200-£3,500-£3,800-£4,000 etc. |
| £6,000 to £10,000 | by £500 |
| £10,000 to £20,000 | by £1,000 |
| £20,000 and up | Auctioneer's discretion |
- 4.10 **Bidding by Spink**
- 4.10.1 We reserve the right to bid on Lots on the Seller's behalf up to the amount of the Reserve (if any), which will never be above the low estimate printed in the auction catalogue.
- 4.10.2 The Spink Group reserves the right to bid on and purchase Lots as principal.
- 4.10.3 Lots with this symbol (Ⓢ) indicate that a party has provided Spink with an irrevocable bid on the lot that will be executed during the sale at a value that ensures that the lot will sell. The irrevocable bidder, who may bid in excess of the irrevocable bid, will be compensated based on his bid in the event he or she is not the successful bidder or may receive a fixed fee in the event he or she is the successful bidder. If the irrevocable bidder is the successful bidder, the fixed fee for providing the irrevocable bid may be netted against the irrevocable bidder's obligation to pay the full purchase price for the lot. If the irrevocable bid is not secured until after the printing of the auction catalogue, a pre-sale announcement will be made indicating that there is an irrevocable bid on the lot.
- If you are interested in placing an irrevocable bid in an auction, please contact us at chairmanoffice@spink.com. Typically, only some of the lots with an estimate, which must exceed £100,000 or equivalent in other currencies are open to irrevocable bids.
- 4.11 **The Auctioneer's Discretion**
The auctioneer has the right at his absolute discretion to refuse any bid to advance the bidding in such manner as he may decide to withdraw or divide any Lot, to combine any two or more Lots and, in the case of error or dispute, to put an item up for bidding again.
- 4.12 **Successful Bid**
Subject to the auctioneer's discretion, the striking of his hammer marks the acceptance of the highest bid, provided always that such bid is higher than the Reserve (where applicable), and the conclusion of a contract for sale between you and the Seller.
- 4.13 **After Sale Arrangements**
If you enter into any private sale agreements for any Lot with the Seller within 60 days of the auction, we, as exclusive agents of the Seller reserve the right to charge you the applicable Buyer's Premium in accordance with these Terms and Conditions, and the Seller a commission in accordance with the terms of the Seller's agreement.
- 4.14 **Return of Lot**
- 4.14.1 Once your bid has been accepted for a Lot then you are liable to pay for that Lot in accordance with these Terms and Conditions. If there are any problems with a Lot then you must notify us within 7 days of receipt of the Lot, specifying the nature of the problem. We may then request that the Lot is returned to us for inspection. Save as set out in clause 5.13, the cancellation of the sale of any Lot and the refund of the corresponding purchase price is entirely at our sole discretion. We will not normally exercise that discretion if the Lot is not received by us in the same condition that it was in at the auction date.
- 4.14.2 No lot may be returned on account of condition if the condition was stated by a third party grading company (including, but not limited to PCGS, NGC, ANACS, ICG, PMG, WBG, Legacy Currency Grading).
- 5 **AFTER THE AUCTION**
- 5.1 **Buyer's Premium and other charges**
In addition to the Hammer Price, you must pay us the Buyer's Premium at a rate of 20% of the final Hammer price of each lot, postage charge and a fee for paying by card.
- 5.2 **Value Added Tax**
Other than in respect of Zero-rated Lots (o) VAT is chargeable on the Hammer price and the Buyer's premium of daggered (†) and (Ω) lots at the standard rate (currently 20%), and on lots marked (x) at the reduced rate (currently 5% on the Hammer price and 20% on the Buyer's premium). VAT on Margin scheme lots (identified by the absence of any VAT symbol next to the lot number) is payable at 20% on the Buyer's premium only.
- 5.3 **VAT Refunds**
- General**
- 5.3.1 As we remain liable to account for VAT on all Lots unless they have been exported outside the EU within 3 months of the date of sale, you will generally be asked to deposit all amounts of VAT invoiced. However, if a Spink nominated shipper is instructed, then any refundable VAT will not be collected. In all other cases credits will be made when proof of export is provided. If you export the Lot yourself you must obtain shipping documents from the Shipping Department for which a charge of £50 will be made.
- 5.3.2 If you export the Lot you must return the valid proof of export certificate to us within 3 months of the date of sale. If you fail to return the proof of export certificate to us within such period and you have not already accounted to us for the VAT, you will be liable to us for the full amount of the VAT due on such Lot and we shall be entitled to invoice you for this sum.
- 5.3.3 To apply for a refund of any VAT paid, the proof of export certificate must be sent to our Shipping Department clearly marked 'VAT Refund' within 3 months of the date of sale. No payment will be made where the total amount of VAT refundable is less than £50 and Spink will charge £50 for each refund processed.
- VAT Refunds - Buyers from within the EU**
- 5.3.4 VAT refunds are available on the Hammer Price and Buyer's Premium of Daggered (†) and Investment Gold (g) Lots. You must certify that you are registered for VAT in another EU country and that the Lot is to be removed from the United Kingdom within 3 months of the date of sale.
- 5.3.5 Where an EU buyer purchases a Lot on which import VAT has been charged, no refund of VAT is available from us. It may be possible to apply directly for a refund on form VAT 65 to HM Revenue & Customs Overseas Repayment Section, Londonderry.
- VAT Refunds - Buyers from outside the EU**
- 5.3.6 Where a Lot is included within the Auctioneers' Margin Scheme and evidence of export from the EU is produced within 3 months of the date of sale, the VAT on Buyer's Premium may be refunded.
- 5.3.7 Where the Lot is marked as a Daggered (†) Lot the VAT charged on the Hammer Price may be refunded where evidence of export from the EU is produced within 3 months of the date of sale. A refund of VAT charged on the Buyer's Premium can also be made on receipt of proof of business as a collectibles dealer.
- 5.3.8 Where the Lot is marked as an Omega (Ω) Lot or an Import VAT (x) Lot and evidence of export from the EU is produced within 3 months of the date of sale, the VAT charged on both the Hammer Price and Buyer's Premium may be refunded. Where required, we can advise you on how to export such Lots as a specific form of export evidence is required. Where we advise you on the export of the Lots, please be aware that the ultimate responsibility in respect of obtaining a valid proof of export certificate will lie with you and we will not be responsible for your failure to obtain such certificate.
- 5.3.9 Lot marked as Investment Gold (g) is exempt from VAT on Hammer price. A refund of VAT charged on the Buyer's Premium can be made on receipt of proof of business as a collectibles dealer and where evidence of export from the EU is produced within 3 months of the date of sale.
- 5.4 **Payment**
- 5.4.1 You must provide us with your full name and permanent address and, if so requested, details of the bank from which any payments to us will be made. You must pay the full amount due (comprising the Hammer Price, the Buyer's Premium and any applicable VAT) within seven days after the date of the sale. This applies even if you wish to export the Lot and an export licence is (or may be) required.
- 5.4.2 You will not acquire title to the Lot until all amounts due have been paid in full. This includes instances where special arrangements were made for release of Lot prior to full settlement.
- 5.4.3 Payment should be made in sterling by one of the following methods:
- Direct bank transfer to our account details of which are set out on the invoice. All bank charges shall be met by you. Please ensure that your client number is noted on the transfer.
 - By cheque or bank draft made payable to Spink and Son Ltd and sent to Spink at 69 Southampton Row, Bloomsbury, London WC1B 4ET. Please note that the processing charges for payments made by cheques or bank drafts drawn on a non-U.K bank shall be met by you. Please ensure that the remittance slip printed at the bottom of the invoice is enclosed with your payment.

- (iii) By Visa or Mastercard. All Corporate cards regardless of origin and Consumer debit and credit cards issued outside the EU are subject to a fee of 3%. For all card payments there are limits to the amounts we will accept depending on the type of card being used and whether or not the cardholder is present.
- 5.4.4 Payments should be made by the registered buyer and not by third parties, unless it has been agreed at the time of registration that you are acting as an agent on behalf of a third party.
- 5.5 Invoices**
Invoices may consist of one or more pages and will show: Zero rated Lots (o); no symbol Lots sold under the Auctioneers' Margin Scheme; Lots marked (g) special scheme Investment Gold; Daggered Lots (†), imported Lots marked (x) and (Ω), (c) Lots with Zero rated hammer for EU VAT registered buyers.
- 5.6 Collection of Purchases**
5.6.1 Unless specifically agreed to the contrary, we shall retain lots purchased until all amounts due to us, or to the Spink Group, have been paid in full. Buyers will be required to pay for their lots when they wish to take possession of the same, which must be within 7 days of the date of the sale, unless prior arrangements have been made with Spink. Without prior agreement, lots will not be released until cleared funds are received with regard to payments made by cheque.
5.6.2 Unless we notify you to the contrary, items retained by us will be covered in accordance with our policy which is available for inspection at our offices from the date of sale for a period of seven days or until the time of collection, whichever is sooner. After seven days or from the time of collection, whichever is the earlier, the Lot will be entirely at your risk.
5.6.3 Our policy will not cover and we are unable to accept responsibility for damage caused by woodworm, changes in atmospheric conditions or acts of terrorism.
- 5.7 Notification**
We are not able to notify successful bidders by telephone. While Invoices are sent out by email or mail after the auction we do not accept responsibility for notifying you of the result of your bid. You are requested to contact us by telephone or in person as soon as possible after the auction to obtain details of the outcome of your bids to avoid incurring charges for late payment.
- 5.8 Packing and handling**
5.8.1 We shall use all reasonable endeavours to take care when handling and packing a purchased Lot but remind you that after seven days or from the time of collection, whichever is sooner, the Lot is entirely at your risk. Our postage charges are set out at the back of the catalogue.
5.8.2 It is the responsibility of the Buyer to be aware of any Import Duties that may be incurred upon importation to the final destination. Spink will not accept return of any package in order to avoid these duties. The onus is also on the Buyer to be aware of any Customs import restrictions that prohibit the importation of certain collectibles. Spink will not accept return of the Lot(s) under these circumstances. Spink will not accept responsibility for Lot(s) seized or destroyed by Customs.
5.8.3 If the Buyer requires delivery of the Lot to an address other than the invoice address this will be carried out at the discretion of Spink.
- 5.9 Recommended packers and shippers**
If required our shipping department may arrange shipment as your agent. Although we may suggest carriers if specifically requested, our suggestions are made on the basis of our general experience of such parties in the past and we are not responsible to any person to whom we have made a recommendation for the acts or omissions of the third parties concerned.
- 5.10 Remedies for non-payment or failure to collect purchases**
5.10.1 If you fail to make payment within seven days of your stipulated payment date set out in your invoice, we shall be entitled to exercise one or more of the following rights or remedies:
5.10.1.1 to charge interest at the rate of 2% per month compound interest, calculated on a daily basis, from the date the full amount is due;
5.10.1.2 to set off against any amounts which the Spink Group may owe you in any other transaction the outstanding amount remaining unpaid by you;
5.10.1.3 we may keep hold of all or some of your Lots or other property in the possession of the Spink Group until you have paid all the amounts you owe us or the Spink Group, even if the unpaid amounts do not relate to those Lots or other property. Following fourteen days' notice to you of the amount outstanding and remaining unpaid, the Spink Group shall have the right to arrange the sale of such Lots or other property. We shall apply the proceeds in discharge of the amount outstanding to us or the Spink Group, and pay any balance to you;
5.10.1.4 where several amounts are owed by you to the Spink Group in respect of different transactions, to apply any amount paid to discharge any amount owed in respect of any particular transaction, whether or not you so direct;
5.10.1.5 to reject at any future auction any bids made by you or on your behalf or obtain a deposit from you before accepting any bids.
5.10.2 If you fail to make payment within thirty-five days, we shall in addition be entitled to:
5.10.2.1 to cancel the sale of the Lot or any other item sold to you at the same or any other auction;
5.10.2.2 to arrange a resale of the Lot, publicly or privately, and, if this results in a lower price being obtained, claim the balance from you together with all reasonable costs including a 20% seller's commission, expenses, damages, legal fees, commissions and premiums of whatever kind associated with both sales or otherwise, incurred in connection with your failure to make payment;
5.10.2.3 when reselling the Lot, place a notice in our catalogue stating that you successfully purchased the Lot at auction but have subsequently failed to pay the Hammer Price of the Lot; or
5.10.2.4 take any other appropriate action as we deem fit.
5.10.3 If you fail to collect within fourteen days after the sale, whether or not payment has been made, you will be required
5.10.3.1 to pay a storage charge of £2 per item per day plus any additional handling cost that may apply.
5.10.3.2 you will not be entitled to collect the Lot until all outstanding charges are met, together with payment of all other amounts due to us.
- 5.11 Use of Default Information**
If you fail to make payment for a Lot in accordance with these Terms and Conditions:
5.11.1 we reserve the right to refuse you the right to make bids for any future auction irrespective of whether previous defaults have been settled; and
5.11.2 you acknowledge that we may (as necessary for our legitimate interests those of other auctioneers and live bidding platforms in referencing customers and avoiding customer defaults) disclose details of such default to other auctioneers and live bidding platforms, which will include your name, address, nature of the default and the date of the default.
Auctioneers or live bidding platforms who receive details of the default may rely on such information when deciding whether to enter into a transaction with you in the future.
- 5.12 Export Licence**
5.12.1 If required we can, at our discretion, advise you on the detailed provisions of the export licensing regulations. Where we advise you in relation to export licensing regulations the ultimate responsibility in respect of any export will lie with you and we will not be responsible for your failure to apply for any necessary licences.
5.12.2 If the Lot is going to be hand carried by you, you may be required to produce a valid export licence to us or sign a waiver document stating that a licence will be applied for.
5.12.3 You should always check whether an export licence is required before exporting. Export licences are usually obtained within two or three weeks but delays can occur.
5.12.4 Unless otherwise agreed by us in writing, the fact that you wish to apply for an export licence does not affect your obligation to make payment within seven days nor our right to charge interest on late payment.
5.12.5 If you request that we apply for an export licence on your behalf, we shall be entitled to recover from you our disbursements and out of pocket expenses in relation to such application, together with any relevant VAT.
5.12.6 We will not be obliged to rescind a sale nor to refund any interest or other expenses incurred by you where payment is made by you despite the fact that an export licence is required.
- 5.13 Refund in the case of Forgery**
5.13.1 A sale will be cancelled, and the amount paid refunded to you if a Lot (other than a miscellaneous item not described in the catalogue) sold by us proves to have been a Forgery. We shall not however be obliged to refund any amounts if either (a) the catalogue description or saleroom notice at the auction date corresponded to the generally accepted opinion of scholars or experts at that time, or fairly indicated that there was a conflict of opinions, or (b) it can be demonstrated that the Lot is a Forgery only by means of either a scientific process not generally accepted for use until after publication of the catalogue or a process which at the date of the auction was unreasonably expensive or impracticable or likely to have caused damage to the Lot. Furthermore, you should note that this refund can be obtained only if the following conditions are met:
5.13.1.1 you must notify us in writing, within seven days of the receipt of the Lot(s), that in your view the Lot concerned is a Forgery;
5.13.1.2 you must then return the item to us within fourteen days from receipt of the Lot(s), in the same condition as at the auction date; and
5.13.1.3 as soon as possible following return of the Lot, you must produce evidence satisfactory to us that the Lot is a Forgery and that you are able to transfer good title to us, free from any third party claims.
5.13.1.4 you must provide to us all evidence obtained by you that a Lot is a Forgery no later than 7 days after you receive such evidence.
5.13.2 In no circumstances shall we be required to pay you any more than the amount paid by you for the Lot concerned and you shall have no claim for interest.
5.13.3 The benefit of this guarantee is not capable of being transferred, and is solely for the benefit of the person to whom the original invoice was made out by us in respect of the Lot when sold and who, since the sale, has remained the owner of the Lot without disposing of any interest in it to any third party.
5.13.4 We shall be entitled to rely on any scientific or other process to establish that the Lot is not a Forgery, whether or not such process was used or in use at the date of the auction.

6 LIABILITY

Nothing in these Terms and Conditions limits or excludes our liability for:

- 6.1 death or personal injury resulting from negligence; or
- 6.2 any damage or liability incurred by you as a result of our fraud or fraudulent misrepresentation.

7 USE OF YOUR PERSONAL INFORMATION

- 7.1 We will use the personal information you provide to us as set out in our privacy notice (available at <https://spink.com/privacy-policy>) and in particular to:
 - 7.1.1 process the bids you make on Lots (whether successful or otherwise) and other auction related services we provide;
 - 7.1.2 process your payment relating to a successful purchase of a Lot;
 - 7.1.3 arrange for delivery of any Lot you purchase, which will include passing your details to shipping providers and, on overseas deliveries, to customs where they make enquiries regarding the Lot;
 - 7.1.4 inform you about similar products or services that we provide, but you may stop receiving these at any time by contacting us.
- 7.2 In accordance with clause 4.2, we may pass your information to credit reference agencies in order to obtain credit checks from them, and they may keep a record of any search that they do.
- 7.3 In accordance with clause 5.11, where you default on making payment for a Lot in accordance with these terms and conditions we may disclose details of such default to other auctioneers and live bidding platforms.
- 7.4 We are also working closely with third parties (including, for example, other auctioneers and live bidding platforms) and may receive information about you from them.
- 7.5 Where you provide us with personal information about other individuals, you must ensure that your provision of that information is compliant with applicable data protection law.

8 COPYRIGHT

- 8.1 We shall have the right (on a non-exclusive basis) to photograph, video or otherwise produce an image of the Lot. All rights in such an image will belong to us, and we shall have the right to use it in whatever way we see fit.
- 8.2 The copyright in all images, illustrations and written material relating to a Lot is and shall remain at all times our property and we shall have the right to use it in whatever way we see fit. You shall not use or allow anyone else to use such images, illustrations or written material without our prior written consent.

9 VAT

You shall give us all relevant information about your VAT status and that of the Lot to ensure that the correct information is printed in the catalogues. Once printed, the information cannot be changed. If we incur any unforeseen cost or expense as a result of the information being incorrect, you will reimburse to us on demand the full amount incurred.

10 NOTICES

All notices given under these Terms and Conditions may be served personally, sent by 1st class post, or faxed to the address given to the sender by the other party. Any notice sent by post will be deemed to have been received on the second working day after posting or, if the addressee is overseas, on the fifth working day after posting. Any notice sent by fax or served personally will be deemed to be delivered on the first working day following despatch.

11 ADDITIONAL PROVISIONS

The following provisions of this clause 11 shall apply only if you are acting for the purposes of your business.

11.1 Limitation of Liability

Subject to clause 6, we shall not be liable, whether in tort (including for negligence) or breach of statutory duty, contract, misrepresentation or otherwise for any:

- 11.1.1 loss of profits, loss of business, depletion of goodwill and/or similar losses, loss of anticipated savings, loss of goods, loss of contract, loss of use, loss of corruption of data or information; or
- 11.1.2 any special, indirect, consequential or pure economic loss, costs, damages, charges or expenses.

11.2 Severability

If any part of these Terms and Condition is found by any court to be invalid, illegal or unenforceable, that part may be discounted and the rest of the conditions shall continue to be valid and enforceable to the fullest extent permitted by law.

11.3 Force majeure

We shall have no liability to you if we are prevented from, or delayed in performing, our obligations under these Terms and Conditions or from carrying on our business by acts, events, omissions or accidents beyond our reasonable control, including (without limitation) strikes, lock-outs or other industrial disputes (whether involving our workforce or the workforce of any other party), failure of a utility service or transport network, act of God, war, riot, civil commotion, malicious damage, compliance with any law or governmental order, rule, regulation or direction, accident, breakdown of plant or machinery, fire, flood, storm or default of suppliers or subcontractors.

11.4 Waiver

11.4.1 A waiver of any right under these Terms and Conditions is only effective if it is in writing and it applies only to the circumstances for which it is given. No failure or delay by a party in exercising any right or remedy under these Terms and Conditions or by law shall constitute a waiver of that (or any other) right or remedy, nor preclude or restrict its further exercise. No single or partial exercise of such right or remedy shall preclude or restrict the further exercise of that (or any other) right or remedy.

11.4.2 Unless specifically provided otherwise, rights arising under these Terms and Conditions are cumulative and do not exclude rights provided by law.

11.5 Law and Jurisdiction

11.5.1 These Terms and Conditions and any dispute or claim arising out of or in connection with them or their subject matter, shall be governed by, and construed in accordance with, the law of England and Wales.

11.5.2 The parties irrevocably agree that the courts of England and Wales shall have exclusive jurisdiction to settle any dispute or claim that arises out of, or in connection with, Terms and Conditions or their subject matter.

Postal Charges

Prices for all items including postage and packaging

Invoice Value	UK	EU	Rest of the World
Up to £1,500	£12	£20	£30
Up to £10,000	£20	£40	£60
Above £10,001	£30	£60	£90

The above fees are in GBP and would be converted into the sale currency if applicable.

Shipments of more than 2kg or volumetric measurement of more than 2kg have to be sent by courier. Certain countries may incur extra charge when courier services are required by our insurance policy. For lots sent by courier please contact Auctionteam@spink.com for calculation of any further relevant cost in addition to the above charges.

Value Added Tax (VAT)

Charging of (VAT) at Auction

The information shown on this page sets out the way in which Spink intends to account for VAT.

i. Auctioneers' Margin Scheme

1. Where possible, we will offer Lots for sale under the Auctioneers' Margin Scheme. Such Lots can be identified by the absence of any VAT symbol next to the Lot number in the catalogue. Such lots are subject to 20% VAT on the Buyers' Premium but are not be subject to VAT on the Hammer Price.
2. Where Lots are sold using the Auctioneers' Margin Scheme to UK VAT-registered businesses, the VAT on Buyers' Premium is not recoverable as input tax. Upon request on sale day, we will issue invoices that show VAT separately on both the Hammer Price and the Buyer's Premium. This will enable VAT-registered businesses to recover the VAT charged as input tax, subject to the normal rules for recovering input tax.

ii. Zero-Rated Lots

Limited Categories of goods, such as books, are Zero-rated (o) for VAT in the United Kingdom. Such Lots are offered under the Auctioneers' Margin Scheme. In these circumstances no VAT will be added to the Buyer's premium.

iii. Daggedged Lots

Lots which are Daggedged (†) in the catalogue are subject to VAT at 20% on both the Hammer Price and the Buyer's Premium.

iv. Imported and Omega Lots

Lots which are marked (x) in the catalogue are subject to VAT at 5% on the Hammer price plus 20% on the Buyer's premium. Lots which bear the Omega symbol (Ω) are subject to VAT at 20% on the Hammer Price and on the Buyer's Premium. This VAT is payable on items imported from outside the EU. In these cases we have used a temporary importation procedure, which in effect means that the point of importation is deferred until the Lot has been sold. At this point the Buyer is treated as the importer and is liable to pay the import VAT due. We will collect the VAT from you and pay it to HM Customs and Excise on your behalf.

v. Investment Gold Lots

Lots marked (g) in the catalogue are exempt from VAT on the Hammer Price and are subject to VAT at 20% on the Buyer's Premium. A refund of VAT charged on the Buyer's Premium can also be made on receipt of proof of business as a collectibles dealer outside of the EU.

SPINK

WHERE HISTORY IS VALUED

SALE CALENDAR 2020

STAMPS

25 Aug-8 September	Stamps of the British Commonwealth	London	20139
3 September	The Charles Freeland Collection of Three Islands: St Lucia, Nevis & St Vincent	London	20037
1 October	The Gary Diffen Collection of Australian Colonies Errors - Part 2	London	20039
1 October	The 'Lionheart' Collection of Great Britain and British Empire - Part XIII	London	20013
3 October	The Doyen Collection	London	20034
14 October	Stamps and Covers of Southern Africa	London	20040
23 October-9 November	The Philatelic Collectors' Series e-Auction	Hong Kong	
28 October-11 November	Stamps and Covers of France and French Colonies	London	20160
4-17 November	The Double Head & Admiral Stamps of Rhodesia	New York	175
19 November	The "Dubois" Collection of Jamaica Postal History and Stamps - Part I	London	20041
1-9 December	The Philatelic Collectors' Series Sale	New York	176

COINS

10-21 September	The Numismatic Collector's Series Sale	New York	360
15 September	British Coins and Commemorative Medals: Autumn Auction	London	20005
15 September	The Ennismore Collection of Anglo-Saxon and Viking Coins	London	20055
22 September-6 October	Spink Numismatic e-Circular 5: Indian and Islamic Coins	London	20125
7 October	A Collection of English Patterns	London	20006
13 October-1 November	The Numismatic Collector's Series e-Auction	Hong Kong	CSS55
1-10 December	Spink Numismatic e-Circular 6: Sixpences	London	20126
15 December	The Tony Abramson Collection of Dark Age Coinage	London	20000

BANKNOTES

6-30 August	World Banknotes e-Auction	London	20110
10-21 September	The Numismatic Collector's Series Sale	New York	360
8 October	The Mark T. Ray Collection of English Banknotes	London	20021
13 October-1 November	The Numismatic Collector's Series e-Auction	Hong Kong	CSS55
4/5 November	World Banknotes	London	20009

MEDALS

10-21 September	The Numismatic Collector's Series Sale	New York	360
6-15 October	The National Toy Soldier Museum Collection: Part 1 - Uniforms	New York	362
13 October-1 November	The Numismatic Collector's Series e-Auction	Hong Kong	CSS55
11-19 November	The National Toy Soldier Museum Collection: Part 2 - Medals	New York	363
8/9 December	Orders, Decorations and Medals	London	20003

BONDS & SHARES

2-22 September	Bonds and Share Certificates of the World e-Auction	London	20128
13 October-1 November	The Numismatic Collector's Series e-Auction	Hong Kong	CSS55

HISTORICAL DOCUMENTS

16-27 October	Autographs & Documents e-Auction	New York	364
---------------	----------------------------------	----------	-----

LIFESTYLE COLLECTABLES

23-30 August	Fine Whisky & Rum E-Auction	Hong Kong	SFW35
3-14 December	Estates and Collections e-Auction	New York	365

The above sale dates are subject to change

Spink offers the following services:

- VALUATIONS FOR INSURANCE AND PROBATE FOR INDIVIDUAL ITEMS OR WHOLE COLLECTIONS -
- SALES ON A COMMISSION BASIS EITHER OF INDIVIDUAL PIECES OR WHOLE COLLECTIONS -



£25



BY APPOINTMENT TO
HER MAJESTY THE QUEEN
PRINTED AND SOLD BY
SPINK & SPINK LTD, LONDON



BY APPOINTMENT TO
HIS MAJESTY THE KING
PRINTED AND SOLD BY
SPINK & SPINK LTD, LONDON

SPINK

WHERE HISTORY IS VALUED

FOUNDED
1666

STAMPS COINS BANKNOTES MEDALS BONDS & SHARES AUTOGRAPHS BOOKS
WINE & SPIRITS HANDBAGS COLLECTIONS ADVISORY SERVICES SPECIAL COMMISSIONS

69 Southampton Row, Bloomsbury, London WC1B 4ET
www.spink.com