
THE 'LIONHEART' COLLECTION OF GREAT BRITAIN AND BRITISH EMPIRE - PART XII



SPINK

WHERE HISTORY IS VALUED

15 JULY 2020

LONDON



THE 'LIONHEART' COLLECTION OF GREAT BRITAIN AND BRITISH EMPIRE - PART XII

Sale Venue:

69 Southampton Row

London WC1B 4ET

tel +44 (0)20 7563 4005 fax +44 (0)20 7563 4037

Vat No: GB 791627108

Sale Details | Wednesday 15 July 2020 at 2.00 p.m.
with some restrictions, please refer to page 3

When sending commission bids or making enquiries,
this sale should be referred to as **LIONHEART - 20012**

Viewing of Lots | At Spink London with some restrictions, please refer to page 3
Thursday 9 July 2020 at 10:00 a.m. - 5:00 p.m.
Friday 10 July 2020 at 10:00 a.m. - 5:00 p.m.
Monday 13 July 2020 at 10:00 a.m. - 5:00 p.m.

| Private viewing by appointment only

Live platform |  

Your Specialists for this Sale



Josh Barber
jbarber@spink.com
+44 (0)20 7563 4080

Bids
Benedetta Fusco
Dora Szigeti
auctionteam@spink.com
+44 (0)20 7563 4108/4005
fax +44 (0)20 7563 4037

Internet Bidding
Michael Lewis
support@spink.com
+44 (0)20 7563 4090

Payment Enquiries
Veronica Morris
creditcontrol@spink.com
+44 (0)20 7563 4018

VAT Enquiries
John Winchcombe
jwinchcombe@spink.com
+44 (0)20 7563 4101

The Spink Environment Commitment: Paper from Sustainable Forests and Clean Ink

Spink has a long history of preserving not only collectables but our planet, too. We are proud to ensure that our policy of sustainability and conservation keeps up with Spink's growth, helping improve the environment for new generations of collectors.

We insist that our printers source all paper used in the production of Spink catalogues from FSC and/or PEFC suppliers and use non-hazardous inks. We also ask they hold the environmental standard ISO 14001.

Spink recycle all ecological material used on our premises and we encourage you to recycle your catalogue once you have finished with it.

Front Cover Illustrations: 24, 62, 158, 160, 185, 241, 263, 278, 290, 314, 326 Back Cover Illustration: 269, 242

Inside Front Cover Illustrations: 165, 240 Inside Back Cover Illustrations: 286, 328

www.spink.com

@SpinkandSon

#Spink_Auctions

Spink_auctions

Spinkauctions

Spink_auctions



Group Chairman and CEO

Olivier D. Stocker

Directors

Tim Hirsch FRPSL

Chief Financial Officer

Alison Bennet

Head of EMEA

Mira Adusei-Poku
mpoku@spink.com

Global Head of Banknotes and Bonds

Kelvin Cheung
kcheung@spink.com

Specialists

Stamps

Tim Hirsch FRPSL
Iain Murphy
David Parsons
Nick Startup
Neill Granger FRPSL
Dominic Savastano
Josh Barber
Thomas Fell
Ian Shapiro (Consultant)
Guido Craveri (Consultant)
Christopher Green
George Yue (Consultant)
Alan Ho

Bonds & Shares

Mike Veissid (Consultant)

Books

Emma Howard
Nik Von Uexkull
Olivia Rae Marshall

Client & Auction Management

Geoff Anandappa (Consultant)
Dora Szigeti
Nik Von Uexkull
Benedetta Fusco
John Winchcombe
Victor Castel
Samantha Lanevi
Newton Tsang
Katrina Chan

PR & Marketing

Rita Ariete
Alzbeta Lanova

Chief Customer Officer

Rita Ariete

Head of Americas

Charles J Blane
cblane@spink.com

Coins

Henrik Berndt
Richard Bishop
Tim Robson
Gregory Edmund
Lawrence Sinclair (Consultant)
Barbara Mears
Greg Cole
Kin Choi Cheung
Paul Pei Po Chow
Joseph Lam

Historical Documents

Thomas Fell
Neill Granger FRPSL
Ian Shapiro (Consultant)
Greg Cole

Finance

Alison Bennet
Sue Pui
Marco Fiori
Mina Bhagat
Dennis Muriu
Veronica Morris
Nicholas Waring

Representatives For Australia

Peter Griffiths - pgriffiths@spink.com
Michael R. Downey - mdowney@spink.com

Representative For Canada

Timothy J. Stewart - tstewart@spink.com

Representative For Japan

日本での弊社オークションへの出品・参加に関してのお問い合わせ

Alan Ho - japan@spink.com

Representative For South Africa

Andrew Kennedy - akennedy@spink.com

Chief Operating Officer

Mira Adusei-Poku

Head of Asia-Pacific

Sue Pui
spui@spink.com

Banknotes

Barnaby Faulk
Elaine Fung
Arnas Savickas
Greg Cole
Paul Pei Po Chow

Orders, Decorations & Medals

Marcus Budgen
Iain Goodman
Greg Cole

Wine & Spirits

George Koutsakis

Special Commissions

Ian Copson
Robert Wilde-Evans

IT & Administration

Michael Lewis
Liz Cones
Slawomir Kolsut
Newton Tsang
Jacqueline Wong

Spink UK

69 Southampton Row
Bloomsbury
London
WC1B 4ET
Email:
conciierge@spink.com
Tel: +44 (0)20 7563 4000
Fax: +44 (0)20 7563 4066

Spink USA

145 W. 57th St.
18th Floor
New York, NY
10019
Email:
usa@spink.com
Tel: +1 646 941 8664
Fax: +1 646 941 8686

Spink China

4/F and 5/F
Hua Fu Commercial
Building
111 Queen's Road West
Sheung Wan
Hong Kong
Email:
china@spink.com
Tel: +852 3952 3000
Fax: +852 3952 3038

Spink Asia

Registered at:
50 Raffles Place
#17-01 Singapore Land
Tower
Singapore 048623
Email:
singapore@spink.com

Spink Switzerland

Via Livio 8
6830 Chiasso
Switzerland
Email:
switzerland@spink.com
Tel: +41 91 911 62 00
Fax: +41 91 922 20 52



VIEWING & AUCTION

All of us at Spink have worked hard to ensure your visit to the Spink building will be a safe experience. We have completed a risk assessment in accordance with government guidelines and our doors are opened to the public from 15th June.

Please look at the following guidance that will help us look after you during your visit.



If you are unwell for any reason we highly recommend you stay at home.



One of our staff will use an infra-red thermometer to measure your body temperature on arrival. If you are feverish, we will ask you to come back in two weeks' time.



As you enter the building we will offer you a face mask that simply hooks over your ears and covers your mouth and nose. You will be offered hand sanitiser at reception. Our concierge will be there to help you.



Our staff will also be wearing masks.



We request that when viewing items you use the gloves which are provided.



If you prefer to book an appointment for private viewing or arrange a virtual viewing please contact our specialists: +44(0)20 7563 4000



We ask that payments are made preferably by card or bank transfer, if not possible we will accept cheque or cash.

Josh Barber | jbarber@spink.com
Iain Murphy | imurphy@spink.com
Tom Fell | tfell@spink.com

Thank you for your support and patience during this time.

WE LOOK FORWARD TO SEEING YOU

SPINK LONDON | 69 Southampton Row | WC1B 4ET | United Kingdom

Extensions

Prospective buyers who wish to obtain an expert opinion on any lot (other than a mixed lot or lot containing undescribed stamps) are requested to notify Spink in writing not less than forty-eight hours before the time fixed for the commencement of the first session of the sale. If accepted by Spink, such request shall have the same effect as notice of an intention to question the authenticity of the lot for the purposes of Condition 3.4 of our Terms and Conditions for Buyers.

Notice of a request for an expert opinion must give the reason why such is required and specify the identity of the expert which will be subject to the agreement of Spink. All lots for which Certificates of Authenticity are desired must be submitted by Spink to the Expert Committee for choice.

Buyers are reminded that any lot(s) purchased “on extension” are subject to payment in accordance with our normal Terms & Conditions of Business. Settlement of any lots on extension should be made at the time of invoice payment. Overdue accounts are subject to interest charges.

Extensions requested on account of condition will not be accepted for expert opinions. Any Lot described as having faults or defects may not be returned should a certificate cite other faults or defects not included in the catalogue description.

Should Spink accept a request for an extension under the foregoing provisions of this paragraph, the fact may be stated by the Auctioneer from the rostrum prior to the sale of the lot.

It should be noted that any stamp accompanied by a Certificate of Authenticity is sold on the basis of that Certificate only and not on the basis of any other. No request for an extension will be accepted on such a stamp and the return of such a stamp will not be accepted.

Notes Concerning Descriptions

GUM: Original gum should be expected on unused stamps where appropriate, unless stated otherwise in the description:

mint	unused with original gum showing slight disturbance caused by previous hinge, which may be present in part or entirely removed
part original gum	unused with original gum significantly disturbed or heavily hinged
unmounted mint	original gum as issued
unused	without gum

COVERS: Should be expected to have minor nicks and tears usually from opening. Folded letters or covers normally have one or two file folds. These are not described unless of an exceptional nature and are not grounds for return.

entire letter	complete as sent with comments still attached to the outer address portion
entire	the outer portion of a folded letter but without contents
cover	an envelope

Symbols and Abbreviations

⊗	unmounted mint	d.s.	datestamp
★	unused	h.s.	handstamp
○	used	Ⓐ	air mail
⊞	block of four	Ⓢ	specimen
⊞	block larger than four	Ⓒ	cancelled
⊞	used on cover, entire letter, etc.	Ⓔ	essay
△	on piece	Ⓗ	proof
var.	variety, varieties	F	forgery
cat.	catalogue, catalogue value	R	reprint
c.d.s.	circular datestamp		

References

Catalogue values and numbers are those taken from the latest available edition.

The use of Gibbons Specialised catalogues in Great Britain sales is clearly indicated. Where other catalogues are used they are mentioned by name.

Buyers are reminded that payment must be made within seven days from the date of sale (condition 5.4.1), and interest will be added for overdue accounts (condition 5.10.1.1).

Please note charges for credit card payments (condition 5.4.3(iii)).

Buyers are reminded that if they default on a successful bid that details relating to such default may be shared with other auction houses and live bidding platforms (condition 5.11).

Note: All buyers must read the notes concerning requests for Extensions printed on page 4 of this catalogue.

The Terms of that notice must be complied with fully under all circumstances.

Please note that 'Spink Live' is running on an improved on-line bidding platform, which is accessible through www.spink.com and also as a SpinkLive app available for download from the App Store.

You can bid online free of charge.

WEDNESDAY 15 JULY 2020

Commencing at 2.00 p.m.

GREAT BRITAIN



1



2



3

- | | | |
|------|---|--------------|
| x1 ① | 1840 1d. Rainbow trial, State 3b, in reddish-brown on white wove paper; fine. Specialised DP20 <i>from</i> £4,500 | £1,000-1,200 |
| x2 ○ | 1840 2d. blue Pl. 1, PG in a deep shade, good to large margins, cancelled by a indistinct black Maltese Cross. Fine | £200-250 |
| x3 ② | 1867 Paris Exhibition 1d. black, Plate 103, JF, a little stained and with a thin. Good even margins. Specialised DP38, £3,000 | £400-450 |

1867-83

Watermark Maltese Cross



4



5

- | | | |
|------|--|--------------|
| x4 ③ | 10/- greenish-grey, Plate 1, CB, overprinted 'SPECIMEN' (type 9). Good colour. S.G. 128s, £4,250 | £800-900 |
| x5 ④ | £1 brown-lilac, AF, overprinted 'SPECIMEN' (type 9). Fresh and fine without gum. S.G. 129s, £6,250 | £1,200-1,600 |

Great Britain, 1867-83 - *contd.*

Watermark Anchor, White Paper



6

- x6 ★ £5 orange, AA, large part original gum, vertical crease at left, nevertheless an attractive example with good colour. S.G. 137, £14,000 £1,000-1,300



7



8

- x7 ○ 1884 Crowns £1 brown-lilac, NC, a well-centred example, centrally cancelled by Registered oval; some very light soiling to lower left otherwise fine. Signed A.Diena etc. S.G. 185, £3,000 £600-800
- x8 ○ 1888 Orbs £1 brown-lilac, BC, a lightly used example cancelled by a single crisp strike of 'LONDON SOUTH WESTERN OFFICE' datestamp; light ink mark to lower right, otherwise fine and a fresh example of the scarcer watermark. S.G. 186, £4,500 £1,000-1,500



9

- x9 ⊕ 1902-10 5/- deep bright carmine and 10/- ultramarine, both marginal examples from the top of the sheet, original unmounted gum, mounted in the selvedge only; the 10/- with some light soiling. S.G. 264 and 265, £1,450 £400-600

Official Stamps



10

x10 ★

1890 5/- rose, NC, overprinted 'I.R. OFFICIAL', an unused example without gum; some minor perf faults otherwise very fine and fresh. B.P.A. Certificate (2018). S.G. O9, £12,000

£1,000-2,000

Telegraph Stamps



11

x11 ☉

1877 £5 orange, AJ, overprinted 'SPECIMEN' in black, part original gum; some perf faults to foot and a diagonal ironed out crease. S.G. T18s, £2.800

£300-400

ADEN



Ex 12

x12 ☉

1937 Dhow set of twelve to 10r. each perforated 'SPECIMEN', lightly mounted mint; fine and attractive. S.G. 1s-12s, £800

£200-300

x13 ★

A mint collection on stock pages which includes 1937 Dhow set to 10r. (unmounted mint), 1919-48 set to 10r. mint and perforated 'SPECIMEN', 1949 Silver Wedding, 1951 set to 10/- on 10r., 1953-63 set to both 20/-; some of the States including Seiyun 1942 set to 5r. and 1946 Victory perforated 'SPECIMEN'. Also Abu Dhabi 1964 set to 10r. and 1966 set to 1d. on 10r. and Trucial States 1951 set to 10r. A couple of stamps with tone spots, apparently unmounted mint throughout. (150)

£600-800

ANTIGUA



14

- x14 ★ 1862 rough-perf 14-16, 6d. blue-green part original gum and 1863 rough perf 14-16, 6d. green, regummed but well-centred and fine appearance. S.G. 1 and 8, £1,600

£300-400
- x15 1862-1962 mint and used collection on album pages including 1862 6d. green used (faults), 1863-67 to 6d. used, 1884 CA 1d. carmine-red mint, 1884-87 CA to 6d. mint, 1903-07 to 5/- mint and used (no 2/- used), 1908-17 to 5/- mint and used, 1913 MCA 5/- mint and used, 1921-29 MCA to £1 mint, 1921-29 Script to 4/-, 1932 Tercentenary to 5/- mint, 1938-51 Script to £1 with shades etc. chiefly good to fine

£450-550
- x16 ★ A mint collection in stockbook which includes 1882 4d. blue unused, 1884-87 set to 1/-, 1903-07 with 5/- chalky paper with plate number in margin, 1913 5/-, 1921-29 sets to £1 and 4/- with some additional multiples, 1932 Tercentenary set, and later issues to 1969; apparently unmounted mint from 1903, a couple of toned stamps. A good lot

£500-700

BAHAMAS

- x17 1859-82 Chalon 1d. collection on album pages including a range mint and used with 1859-60 thin paper 1d. dull lake (10, including two blocks of four), 1863-77 CC various shades mint and used (10+) and 1882 CA mint and used (20+) etc. a nice lot for the specialist. S.G. 2-42 group

£300-400
- x18 1861-1949 mint and used collection on album pages with 1863-77 CC 1d., 4d. (2) and 6d. (4) all used, 1884-90 CA to £1 used, 1901-03 to 3/- mint and used, 1902-07 CA to 5/-, 1911-19 with a selection of shades mint and the set used, 1912-19 MCA to 5/- both mint and used, 1917-19 War Tax, Red Cross, 1921-29 with a variety of shades and blocks of four, 1921-27 Script to £1 mint and 5/- used, 1938-52 Script to £1 mint with various shades and printings including 5/- (6) and £1 (3), 1942 Landfall of Columbus to £1 mint and used etc.; chiefly good to fine

£700-900



19



20

- x19 ★ 1862 (Oct.) Perf. 13 6d. lilac, an unused example without gum; fresh colour and well-centred, perfs slightly trimmed at left. B.P.A. Certificate (1958). S.G. 19a, £2,750

£200-400
- x20 ★ 1865 CC 1/- blue-green, a well-centred unused example without gum; fresh colour. S.G. 38, £2,750

£300-400



21



Ex 22

- x21 ★

1916 (1 May) Special Delivery 5d. black and orange, variety **overprint double**, unused with large part original gum. Signed Holcombe and offered with his Opinion (1993). S.G. S1a, £800

£200-300
- x22 ©

1942 Landfall of Columbus set of fourteen, each perforated 'SPECIMEN', lightly mounted. S.G. 162s-175s, £600

£200-250

BARBADOS



23

- x23 ★

1852-55 blued paper 2d. greyish slate, horizontal pair from the right of the sheet; original gum and good to large margins, natural paper wrinkle at lower right. S.G. 4a, £600+

£150-250

**ESSAYS, PROOFS AND STAMPS
OF MALAYSIA AND SINGAPORE
E-AUCTION**

8 July - 22 July 2020
LONDON

Your Specialist: Nick Startup
Tel.: +44(0)20 7563 4073
Email: nstartup@spink.com



Barbados - *contd.*

The 1861-70 1/- Error Of Colour



24

x24 ★

1/- **blue error of colour**, unused without gum, pen stroke removed as usual; perforated on three sides and imperforate at foot. A fresh and attractive example of this great rarity. B.P.A. Certificate (1998). S.G. 34a, £18,000

£6,000-8,000

PROVENANCE:

Edward Gilbert, June 2005

Note: In 1863 the printers, Perkins, Bacon & Co., sent a supply of 50,000 to the island. On arrival it was discovered that they were printed in blue, the colour of the 1d., instead of black. A new supply was dispatched and the 'Blue' error was not put on sale. Before disposing of these stamps, a number were removed and defaced with a cross in ink which has subsequently been cleaned. It is believed that only nine such errors exist.



25

x25 ★

1875-81 perf. 14 x 12½ 4d. red, unused with large part original gum, short perf at top otherwise fresh and fine. Rare with only eighteen examples recorded including a pair. Robson Lowe (1968) and R.P.S. (1970) Certificates. S.G. 84, £5,000

£1,000-1,500

PROVENANCE:

Spink Auction, October 1998

Spink Auction, July 2016



26

x26 ★

1878 (28 Mar.) 1d. on half 5/- dull rose, **unsevered pair** both with Type 3a surcharge, unused with redistributed toned gum; very rare. Brandon Certificate (2006). S.G. 86b, £26,000

£3,000-5,000



Ex 27

28

x27 ★

1882-86 CA ½d. to 5/- set of nine, unused with part to large part original gum including 4d. grey; a few values with gum toning including the 4d. grey and 5/- bistre. S.G. 89-103, £900+

£200-400

x28 ★

1892 ½d. on 4d. deep brown, variety **surcharge double** in red and black, unused with large part original gum; a couple of tone spots to gum, nevertheless scarce and attractive. B.P.A. Certificate (2007). S.G. 104b, £900

£250-350



29

x29 ①

1902 Earl of Crawford 6d. colour trials in black, blue and slate (3); printed on Small Star watermarked paper without gum, good to large margins. Very fine and rare, only three sets produced

£1,000-2,000

30

No Lot

BECHUANALAND

Bechuanaland Protectorate



31

- x31 ★ 1888 (19 Jan.) £5 lilac and black, an unused example with large part original gum, lightly hinged; very fine. Sismondo Certificate (2013). S.G. 21, £4,000 £1,000-1,500



————— Ex 32 —————

- x32 ★ 1888 (Aug.) group of seven values 1d. on 1d. lilac to 2/- green and black, unused with part to large part original gum. S.G. 41-47, £1,800+ £400-500

BERMUDA

- x33 ★ 1865-1980 mint collection on stockpages, including 1865-1903 perf. 14 1d., 1/-, 1883-1904 with values to 1/-, 1920 and 1921 Tercentenary sets, 1938-53 2/- (3), 2/6d. (5), 5/- (3), 10/- (3), 12/6d. (5) and £1 (2) with shades and perms., etc.; chiefly good to fine £400-500

- x34 1865-1970 mainly mint collection on Scott pages including 1865-1903 CC 2d. blue and perf. 14 x 12½ 1/- green block of sixteen, 1883-1904 CA set to 1/-, 1918-22 MCA to 5/- with duplication, 1938-53 Key Types to £1 with duplication and multiples (seven £1 shades); condition chiefly good to fine £400-600

BRITISH COLUMBIA AND VANCOUVER ISLAND



Ex 35

x35

1860-68 mint and used selection on an album page comprising 1860 2½d. both mint and used, 1898 CC perf. 14 5c. rose mint and 10c. used (2), 1865 3d. blue both mint and used, 1868-71 surcharges with values to \$1 used and to 50c. mint, chiefly good to fine. S.G. 1-33 group

£1,000-2,000



Ex 36

x36 ★

1860-71 virtually complete mint collection of fourteen on a page comprising British Columbia and Vancouver Island 1860 2½d. pale dull red imperforate plate proof, perf. 14 2½d. reddish rose, Vancouver Island 1865 imperf. 10c. blue (with B.P.A. Cert. 1980) and perf. 14 5c. rose, British Columbia 1865-67 CC 3d. deep blue block of four and 1868-71 perf. 12½: 5c., 10c., 50c. and \$1 and perf. 14: 2c., 10c, 25c. and \$1 with wing margin; original gum or unused, a fine and fresh selection of these difficult stamps, a few short perfs in places. S.G. 1-33 group, £20,000+

£5,000-7,000



Ex 37

x37 ★

1860-71 mint selection on an album page (11) comprising 1860 perf. 14 2½d. reddish rose (thinned perf at foot), Vancouver Island 1865 perf. 14 5c. rose and 10c. blue, British Columbia 1865-67 CC 3d. blue, 1868-71 perf. 12½ 5c., 10c. and \$1 (horizontal crease) and perf. 14 2c., 5c. and 25c. (2); chiefly good to fine and part original gum, a few unused without gum. S.G. £5,800+

£1,000-1,500

BRITISH EAST AFRICA



Ex 38



Ex 39

- x38 ★ 1895-96 India overprint set of fifteen to 5r. and 1895 (19 Dec.) 2½ on 1½a. sepia, some light even toning in places, otherwise fine; large part original gum. S.G. 49-64, £820 £200-300
- x39 ★ 1896-1901 CA set of fifteen to 5r., part to large part original gum. S.G. 65-79, £450 £100-200



Ex 40

- x40 ★ 1897-1903 1r. grey-blue (2) and 3r. deep violet, unused with large part original gum. S.G. 92 and 94, £450 £100-200

SPINK LIVE

Spink Live is now running on a new and improved bidding platform
 Accessible online through www.spink.com and also available iOS and Android devices

Bidding on 'Spink Live' remains free of charge

MY ACCOUNT

- Login
- Consign An Item
- Watched Lots
- My Bids

- Medals
- Stamps
- Watches
- Whiskies & Spirits
- Wines

Lot 3: SEAL, 5 songs, including all 1987-2000

Lot 4: RANDY CRAWFORD & JOE SAMPLE, 4 1987-2000

Lot 2010 - CURRENT B

Slide to bid €

CURRENT HISTORY

Click to Login / Register

Tick your Interests

Scroll the Lots

Slide to Bid

Download on the App Store

GET IT ON Google Play

For any enquiries or further assistance please contact:
 Tel: +44 (0)20 7563 4112 | Email: spinklive@spink.com

SPINK

WHERE HISTORY IS VALUED

BRITISH GUIANA



Ex 41

- x41 1850-1962 mainly used collection on pages including 1850-51 8c. green Cotton Reel (thinned), 1852 1c. black on magenta with B.P.A. Certificate (which states it is thinned and has been partly repainted etc.), 1852 4c. black on deep blue (thinned) with B.P.A. Certificate, 1853-59 1c. and 4c., 1863-63 with values to 24c., 1862 issue with values to 4c. including 2c. yellow **with wrong ornament**, 1889 set to 96c. unused, 1898 set of five unused, 1905 and 197 sets unused, largely complete from then on to the 1954 set and chiefly unused and good to fine; some of the earlier issues in mixed condition. High catalogue value
- £3,000-6,000



42

- x42 ○ 1852 (Jan.) Waterlow 1c. black on magenta, large even margins, used with clear 'DEMERARA/SP28/1855' datestamp; fine and attractive. Signed Holcombe. S.G. 9, £5,500
- £1,500-2,000



Ex 43

- x43 ○ 1852 (Jan.) Waterlow 1c. black and magenta (2) and 4c. black on deep blue (2), all used, condition very mixed, the 4c. blues with varying degrees of surface rubbing and one with a horizontal crease; also a perforated reprint pair of both values. S.G. 9 and 10, £35,000
- £1,500-3,000
- x44 ★ 1882-1966 mint collection on stock leaves which includes 1882 4c. blue, 1888-89 surcharges to 72c., 1889 96c., 1905-07 values to 96c., 1913-21 values to 72c. and 96c., 1934-40 set to \$1, 1938-52 set to \$3 with some perf. varieties on the high values, 1954-63 set to \$5, 1966 Independence set to \$5 etc. Clean and fine, apparently unmounted mint throughout
- £200-300
- x45 1882 1c. magenta and 2c. yellow selection on album pages including 1c. unused (8), used (15, including one **without specimen**, a pair and block of four) 2c. used (9, including a pair), a few with varieties including **small '2'** and se-tenant pairs; condition mixed
- £300-400

British Guiana - *contd.*



Ex 46

x46 ☉ 1931-46 Specimen group comprising 1931 Centenary, 1934 set, 1935 Silver Jubilee, 1937 Coronation, 1938-52 to \$3 (no 96c.), 1946 Victory and 1940-55 Postage Dues; fine and the majority unmounted. S.G. £1,000+

£250-350



47

x47 ☼田 1938-52 \$1 bright violet perf. 14 x 13, ablock of four from the lower left of the sheet; unmounted mint, light crease in margin only at upper left; a fine and scarce multiple. R.P.S.L. Certificate (1997). S.G. 317a, £2,200+

£500-700



48

x48 ★ 1938-52 \$1 bright violet perf. 14 x 13 very lightly mounted mint example, fine and fresh. S.G. 317a, £550

£150-200

BRITISH LEVANT



49



50

- x49 ★ 1906 Beyrout Provisional 1pi. on 2d. grey-green and carmine, large part original gum; fine and scarce. R.P.S Certificate (1970). S.G. 15, £1,500 £500-600

British Field Office In Salonica

- x50 ★ 1916 1d. scarlet vertical pair, the upper stamp with **overprint double**, original gum, lightly mounted; fine and rare. B.P.A. Certificate (1977). S.G. 52a, £3,000+ £1,400-1,800

BRITISH SOLOMON ISLANDS

- x51 ★ A mint collection on stock leaves with 1908-11 Small Canoe 1/- to 5/-, 1914-23 set to 10/-, 1922-31 10/-, 1939-51 set plus perforated 'SPECIMEN' and 10/- block of four, 1956-63 set to £1, 1965 set to £1, Butterflies and Birds set to \$5 and 1940 Postage Due set. Generally fine and unmounted mint £300-400

BRITISH VIRGIN ISLANDS

- x52 ★ A mint collection on stock leaves with some St. Ursula values to 1/-, 1883-84 ½d. yellow-buff, 1904 set to 5/- plus 5/- Specimen, 1913-19 5/-, 1922-28 MCA set to 5/- (2) including blocks of 1/- and 2/6d. and script set to 5/-, 1938-47 set to £1 and additional values to £1, 1952 to \$4.80, 1956-62 to \$4.80, 1964-68 to \$2.80; lightly mounted or unmounted mint. Fresh and attractive £250-350



Ex 53

- x53 © 1935-46 perforated Specimen group comprising 1922-28 Script 1d. and 1½d., 1935 Silver Jubilee, 1937 Coronation, 1938-47 to £1 and 1946 Victory; fine and unmounted. S.G. £700+ £200-300

BRUNEI



54

- x54 ○ 1906 2c. on 3c. black and sepia of Labuan, overprinted in red and with variety 'BRUNEI' double, a fine used example with part datestamp in blue. B.P.A. Certificate (1986). S.G. 12a, £2,500

£500-700



Ex 55

56

- x55 ○ 1922 Malaya-Borneo Exhibition, set of nine, each used and with variety **broken 'E'** of 'EXHIBITION'; the 1c. and \$1 toned, otherwise fine. S.G.51-59, £1,000+

£300-400

- x56 ★ 1942-44 25c. slate-purple with **overprint in red**, an unused example with part original toned gum and paper adhesions, not detracting from the fine appearance. Ceremuga Certificate (2018). S.G J14a, £900

£200-300

BURMA



Ex 57

- x57 ★ 1937 Stamps of India overprinted set of seventeen to 15r., large part original gum, lightly mounted; a few values unmounted. S.G. 1-17, £1,000+

£300-400

CANADA



Ex 58

x58

1851-97 mint and used collection on two pages including 1851 3d. red , 6d. slate-violet and 1852-57 ½d. rose all used and each with AIEP Certificates (2006), 1857 7½d. yellow-green used, 1859 New Currency 5c. unused and 10c. and 12½c. used, 1868-90 with values to 15c. unused, 1870-90 with values to 10c. unused, 1897 Jubilee set of sixteen to \$5 unused etc. mixed condition with the odd minor fault; plenty good to fine, huge catalogue value

£2,000-4,000



Ex 59

x59

1851-99 mint and used collection on album pages and stock cards including 1851 3d. used (2), 1852 ½d., 6d., 7½d. and 10d. all used, 12d. overprinted 'SPECIMEN' in green, 1859 ½d. rose unused, 1859-64 with values to 17c. used, Postal Stationery cut outs, 1868 Large Queens to 15c. used and Small Queens to 10c. used along with a duplicated range on stock cards, 1897 Jubilee to \$5 used etc. chiefly good to fine, a few small faults

£2,000-4,000



60

x60 ★

1897 Jubilee \$5 olive-green, a well-centred unused example; lightly mounted mint, a couple of minor gum bends not detracting from the fine appearance. S.G. 140, £1,400

£350-450

x61 ★

1914-43 mint collection of stamps (19) graded 95 or above, most with perfect centring and the majority unmounted mint, each with PSE Certificate and very fine

£200-400

Canada - *contd.***Semi-Official Air Mail - The Tully and Medcalf Disaster Flight**

62

x62 ④

1927 (August) 25c. green and yellow, unused with original gum. One hundred of these special stamps were printed bearing the portraits of the aviators Cpt. Terrance B. Tully and Lt. James V. Medcalf, ninety of these were used on cover and loaded onto the *'Sir John Carling'* aircraft in London, Ontario; after the scheduled stop at Harbour Grace, Newfoundland on the long stretch to London, England on September 7th 1927 the aircraft plunged into the Atlantic Ocean killing both crew members, the aircraft was never found and thus all of its contents lost. One cover bearing the 25c. stamp which was not loaded onto the aircraft in error is known along with just a handful of unused examples, this may be considered to be the finest. An incredibly rare and important Airmail label. Signed Kessler, E. Diena and others and accompanied by E. Diena (1987) and Sergio Sismondo (2003) Certificates. Unitrade CLP 6, \$50,000+

£15,000-25,000

CAPE OF GOOD HOPE



63



64

x63 1853 1d. deep brick-red on deeply blued paper, good to huge margins all round, lightly cancelled; a fine example. S.G. 1a, £475 £150-200

x64 ◻ 1853 1d. brick-red on slightly blued paper, a block of four used by 'CGH' obliterators, clear to good margins, just touched at upper right corner; light ironed vertical crease affecting one pair. S.G. 3, £1,400 £300-400



65

x65 ○ 1853 1d. brick-red on slightly blued paper, a used pair with good to large margins; lightly cancelled and fine. S.G. 3, £700 £200-250

1855-63, White Paper



66



67

x66 ★ 1d. brick-red on cream toned paper, good to large margins, unused with original gum; fine. S.G. 5, £5,000 £900-1,200

x67 ◻ 1d. deep rose-red on cream paper, block of four lightly cancelled, large margins all around, corner crease at lower right; otherwise fine and a scarce multiple. S.G. 5b, £1,500+ £500-600

Cape of Good Hope - *contd.*



68



69

x68 ○ 1d. deep rose-red on cream paper, used strip of three, large margins and large portion of adjoining stamp at left; the left hand stamp with vertical ironed crease, otherwise fresh and fine. lightly cancelled. S.G. 5b, £1,100+ £300-400

x69 ○ 1d. deep rose-red on cream paper, a lightly cancelled example with huge margins and parts of adjoining stamps showing on two sides; fine. S.G. 5b, £375 £100-120



70



71

x70 ○田 4d. blue on white paper, used block of four with good to large margins, lower pair with ironed out horizontal creases, otherwise fine. S.G. 6, £380+ £120-150

x71 ○ 1/- deep dark green on white paper, used strip of three; lightly cancelled, the single at right with minor bend. Signed Calves. S.G. 8b, £1,350 £400-600

1863-64 De La Rue



72

x72 ★田

Id. deep carmine-red, irregular triangular block of four with good to large margins and large part original gum. Signed Calves. S.G. 18, £1,300

£500-700



73

x73 ★田

Id. deep carmine-red, block of four from the left of the sheet; part original gum, attractive. Signed A. Diena. S.G. 18, £1,300+

£500-700



74

x74 ★田

Id. deep carmine-red, block of four from the top of the sheet, showing 'AGE' of 'POSTAGE' watermark, original gum; a fine and attractive multiple. S.G. 18, £1,300+

£500-600

Cape of Good Hope, 1863-64 De La Rue - *contd.*



75



76

- x75 ★田

1d. deep carmine-red, triangular block of four from the left of the sheet, sheet margin showing 'POSTAG' of 'POSTAGE' watermark, original gum; fresh and fine. S.G. 18, £1,300+

£500-600
- x76 ★田

4d. deep blue, block of eight from the left of the sheet, large margins all around, original gum; some minor gum bends and light toning in places, still a very attractive multiple. S.G. 19, £2,400+

£1,000-1,500



77



78

- x77 ★田

4d. deep blue, triangular block of four, good to large margins; part original gum. S.G. 19, £1,200

£400-500
- x78 田

1/- bright emerald-green, a block of four from the right of the sheet, excellent margins and large part original gum; third stamp with light stain in upper margin, otherwise fine. S.G. 21, £2,600+

£1,000-1,500



79

x79 ★ 1/- pale emerald green, good to large margins and large part original gum. Signed A. Diena. S.G. 21a, £1,400 £300-400



80



81

x80 ○ 1880 (Aug.) Provisional '3' on 3d. pale dull rose, vertical pair showing both Type I and Type II surcharges, cancelled by barred oval obliterator. S.G. 37b, £700 £200-300

x81 ○ 1880 (Aug.) Provisional '3' on 3d. pale dull rose, vertical pair showing both Type I and Type II surcharges, cancelled by oval 'ELANDSFONTEIN' datestamps in black; fine. S.G. 37b, £700 £200-300



82

x82 ★ 1882 ½d. on 3d. deep claret strip of three, the middle stamp with variety 'p' in 'PENNY' omitted, part original gum; fine and a scarce positional example of this variety. R.P.S. Certificate (2004). S.G. 47, 47a, £2,500+ £1,000-2,000

Cape of Good Hope - *contd.*

Mafeking Siege Stamps



Ex 83

84

85

- x83 1899-1900 valuable Boer War selection on an album page including Vryburg 1899 ½ PENCE green, 1 PENCE rose and 2 PENCE on 6d. mauve used, Mafeking Siege 1900 Cape stamps overprinted 1d. to 1/-, all used (the 6d. on 3d. and 1/- on 4d. used on piece), 1900 overprints on Bechuanaland Protectorate including 3d. on 1d. lilac, 6d. on 3d. purple on yellow and 1/- on 6d. purple on rose-red all used, overprints on British Bechuanaland with 6d. on 3d. lilac and black unused, 1/- on 6d. purple on rose-red and 2/- on 1/- green with Type 2 overprint both used and 1900 Goodyear 1d. deep blue on blue unused and 3d. Baden Powell 18½mm. 3d. deep blue on blue, marginal example and mounted in the margin only; a lovely selection seldom offered so complete and in such fine condition. Vryburg S.G. 1-3, £680 Mafeking S.G. 1-20, £7,000+ £1,500-3,000
- x84 ★ 1900 1d. pale blue on blue, unused with part toned original gum. Chiavarello Certificate (1982). S.G. 17, £1,200 £200-300
- x85 ★ 1900 3d. pale blue on blue, small format (18½mm. wide), unused with part original gum; fine and fresh appearance. Signed E. Diena and A. Diena and accompanied by Enzo Diena Certificate (1981). S.G. 29, £1,800 £500-600

CAYMAN ISLANDS

- x86 ★ 1900-35 mint collection on Scott pages including 1902-03 CA and 1905 MCA sets to 1/-, 1907 MCA set to 5/-, 1907-09 part set to 5/-, 1912-20 set to 10/- and 3d., 1/- and 10/- with white back, 1921-26 MCA set to 10/-, 1921-26 Script set to 10/-, 1932 Centenary set to 10/-, 1935 set to 10/-; chiefly fine with part to large part original gum £400-600



87

- x87 ★ 1908 (12 Feb.) 2½d. on 4d. brown and blue, unused with part original gum; several expert signatures to reverse including 'JP' in blue ink just showing through lightly to face, also signed Friedl and accompanied by his Certificate (1983). S.G. 35, £1,800 £400-600

CEYLON

1857-59 Watermark Star, Imperforate



Ex 88

89

90

91

- x88 ○
2d. green (shades) a group of eight used examples (four with four margins, the remaining four with three) and 6d. brown (shades) four used examples each with three good margins and just touched on the remaining side. S.G. 2 and 6 group
£150-250
- x89 ○
4d. dull rose, good margins and deep colour, used by barred cancellation; insignificant thin spots at top and lower right in the margin, otherwise fine and scarce. Holcombe (1994) and B.P.A. (1997) Certificates. S.G. 4, £4,500
£1,000-1,500
- x90 ○
9d. purple-brown, good to large margins and lightly used by barred cancellation, B.P.A. Certificate (2001). S.G. 8, £900
£200-300
- x91 ★
10d. dull vermilion, an unused example with large part original gum and four generous margins; very slight mark to surface affecting Queen's nose, barely noticeable, fine and fresh appearance. S.G. 9, £900
£200-300



92



93



Ex 94

- x92 ★
1/9d. green, an unused example with good margins and fine appearance; redistributed original gum. B.P.A. Certificate (1982). S.G. 11, £800
£200-250
- x93 ○
2/- dull blue, close to good margins, neatly used by oval of bars; fine and attractive. B.P.A. Certificate (2001). S.G. 12, £1,300
£400-500
- x94 ○
A used group of ten including 6d. brown (2 differing shades), 9d. purple-brown, 10d. dull vermilion and 1/9d. (2, one with large margins and signed A. Diena) also 1857-64 no watermark imperf. 1/2d. lilac used; chiefly good to fine, a few with close or touched frames and a little toning in places
£600-800

Ceylon - contd.



Ex 95

97

- x95 1857-66 mint and used group including 1859 9d. purple-brown used (3, one with B.P.A. Cert 1959), 10d. dull vermilion unused, just clear at left and good margins elsewhere, 1/9d. green (3, 2 unused and 1 used), 1863-66 CC with unused values from ½d. mauve (10) to 2/- (2) etc. mixed condition, plenty good to fine £800-1,000
- x96 ○ 1857-70 used selection (129) affixed to small pages including 1857-59 1d. blue (6), 2d. green (9), 5d. chestnut (2), 6d. brown (6), 10d. vermilion (2), 1861-64 perforated 1d., 2d., 5d. (3), 1/- (2) etc. condition quite mixed, plenty good £400-600
- x97 ★ 1861-64 perf. 14-15½ 2/- - dull blue, original gum; light horizontal crease not visible from the front. S.G. 37, £750 £150-250



98



99



100

Official Stamp

- x98 ★ 1869 2/- deep blue, overprinted 'SERVICE' in red and imperforate, without gum as usual, prepared for use but not issued; fine colour and deep impression. B.P.A. Certificate (2000). S.G. O5a, £1,500 £500-600
- 1912-25 Multiple Crown CA**
- x99 ⊕田 20r. black and red on blue, block of four from the foot of the sheet with interpanneau margin at right, unmounted mint and fine. S.G. 319, £600+ £200-300
- x100 ★ 50r. dull purple, part original gum. S.G. 320, £650 £200-250



101



102



103



104



- x101 ★ 50r. dull purple, large part original gum and 1921-32 Script 50r. dull purple, lightly mounted slightly toned gum with Toselli Certificate (1996). S.G. 320 and 358, £1,450 £400-600
- x102 ★ 100r. grey-black, large part original gum; a well-centred and fine example. B.P.A. Certificate (2000). S.G. 321, £3,250 £1,000-1,400
- x103 ☉ 500r. dull green overprinted 'SPECIMEN', part original gum; well-centred and fine appearance. S.G. 322s, £750 £200-250
- x104 ☉ 1000r. purple on red, overprinted 'SPECIMEN', large part original gum, an attractive example. S.G. 323s, £1,800 £450-550



105

- x105 ☉ 1000r. purple on red, overprinted 'SPECIMEN', variety **broken crown and scroll**; original lightly mounted gum, strong colour and impression, a fine example of this striking and rare error, only two examples recorded with the Specimen overprint. B.P.A. Certificate (2007). S.G. 323bs £4,000-6,000



106



107

- x106 ☉ 1921-32 Script 100r. brownish grey, marginal example from the top of the sheet, unmounted mint; fine and scarce. S.G. 359, £3,250 £800-1,000

Revenue Stamp

- x107 ★ 1952 100r. purple and blue inscribed 'REVENUE/REVENUE' at sides, marginal example from the foot of the sheet, lightly mounted mint. Barefoot 12 £200-300

CYPRUS

1881 Surcharges



108



109



110

- x108 ★ ½d. on 1d. red, SL, plate 201, variety **surcharge double** Type 4, part original gum; fine and rare. Signed A. Diena, Giovanni Chiavarello Certificate (1977). S.G. 8a, £3,750 £1,000-1,500
- x109 ★ ½d. on 1d. red, PF, plate 205, variety **surcharge double**, Type 5, with a third offset surcharge on the reverse, original gum and fine. Giovanni Chiavarello Certificate (1977). S.G. 9aa, £800 £200-400
- x110 ★ ½d. on 1d. red, TC, plate 215, **surcharge double**, Type 5, unused with part original gum. Giovanni Chiavarello Certificate (1977). S.G. 9ab, £450 £100-200



111

- x111 ★ 1921-23 £1 black and purple on red, large part original gum; centred to left, fine and fresh. S.G. 101, £1,400 £300-400

DOMINICA



Ex 112

- x112 ★ 1923-33 Script set of twenty-one to £1, two sets, large part original gum, the majority lightly mounted. S.G. 71-91, £750 £150-200

FALKLAND ISLANDS



Ex 113

x113 ★ 1878-29 small mint collection on two album pages including 1878 1d. claret, 6d. blue-green and 1/- bistre-brown, 1882 perf. 14 1d. claret (used) and 4d. grey-black, 1891 ½d. on half 1d. brownish claret, 1891-1902 set to 1/-, 1898 2/6d. and 5/-, 1904-12 set of eight to 5/-, 1912-20 set to 10/- (both 5/-), 1929-37 set to £1 etc. chiefly fine and lightly hinged to the pages. Catalogue value £7,000+ £1,200-1,600

x114 1878-29 mainly mint selection on three album pages including 1878-79 1d. claret (small thin), 6d. and 1/-, 1882 CA 1d. claret and 4d. grey-black, 1885-91 1d. and 4d., 1891 ½d. on half 1d. brownish claret used, 1891-96 set to 1/-, 1898 2/6d. and 5/- (toned), 1904-12 set to 3/-, 1912-14 set to 5/- (2), 1921-28 set to 3/- and 1929-37 set to £1; condition a little mixed in places, plenty good to fine £700-900



Ex 115

x115 ★ 1878-1970 fine mint collection on pages including 1878-79 no watermark 1d. to 1/-, 1882 CA 1d. and 4d., 1885 CA sideways 1d. and 4d., 1891 ½d. on half 1d., 1891-1902 ½d. to 1/-, 1898 CC 2/6d. and 5/-, 1904-12 MCA set to 5/- (and used), 1912-20 MCA set to £1, 1918 War Stamps (6), 1921-28 Script set to 5/-, 1928 South Georgia Provisional 2½d. purple-brown, 1929-37 set to £1, 1933 Centenary set to £1 and to 10/- used each on piece (no 1/-), 1938 set to £1 along with some shades, 1948 Silver Wedding, 1952 set to £1 and the set used on two large pieces, 1960 set to £1, 1944 Dependencies sets for Graham Land, South Georgia, South Orkneys and South Shetlands, 1946-49 Thin Maps set of nine etc. an excellent lot in chiefly very fine, lightly mounted condition £5,000-7,000

x116 ⊕ 1895 CA 4d. olive-black, an unmounted mint upper-right marginal block of twenty-four; some light foxing to the reverse; an attractive multiple. S.G. 32 £100-150

Falkland Islands - *contd.*



Ex 117

- x117 ★ 1912-20 MCA 3/- to £1 part set of five including 5/- maroon, large part original gum; £1 with some gum bends. S.G. 66-69 and 67b, £1,085 £170-190



Ex 118



Ex 119

- x118 ★ 1929-37 set of eleven to £1 with additional £1 value, each lightly mounted mint; fine. S.G. 116-126, £1,025 £250-300

- x119 ○ 1929-37 set of twelve to £1 including 1/- line perf. on bright emerald, each fine used with clear part Port Stanley c.d.s. S.G. 116-126, £870+ £180-220



121

Ex 120

- x120 ★ 1933 Centenary set of twelve to £1, lightly mounted; fine. The £1 signed A. Diena and with A.P.S. Certificate (1982). S.G. 127-138, £4,250 £1,000-1,500

- x121 ★ 1938-50 5/- indigo and pale yellow-brown, lightly mounted mint. R.P.S. Certificate (2018). S.G. 161b, £1,100 £200-300

FIJI

- x122 ★ A mint collection in stockbook including 1891-99 1/- block of four, 1884 5/-, 1903 5/- and £1, 1906-12 £1, 1912-23 to £1, 1935 Jubilee and 1937 Coronation Specimen, 1938-41 values to £1 (3), 1954 values to £1 (2), 1959-63 set to £1, 1962-67 set to £1 plus later definite issues to 1970's, 1940 Postage Due set. A clean and attractive lot, lightly mounted or unmounted mint £600-800

GAMBIA



123

x123 ★

1874 CC 4d. pale brown, excellent margins, enormous at foot; unused without gum. Signed A. Diena and accompanied by Giovanni Chiavarello Certificate (1979). S.G. 6, £425

£80-100

GIBRALTAR



Ex 124

x124 ★

1886 Overprint set of seven to 1/-, large part original gum; fine and attractive. S.G 1-7, £1,200

£300-400



Ex 125

x125

1886-1954 chiefly mint collection lightly hinged to album pages, largely complete and including the 1886 Bermuda overprint set to 1/- (no 6d.), 1886-87 CA set to 1/-, 1903 CA set to £1, 1904-08 MCA set to £1, 1912-24 MCA set to £1, 1938-51 set to £1, 1949 Silver Wedding, 1953 set to £1 etc.; chiefly fine and fresh

£1,000-1,500

Gibraltar - *contd.*



Ex 126

x126 ★ 1886-1959 largely complete fine mint collection on album pages including 1886 Bermuda overprint set of seven, 1886-87 CA set of seven to 1/-, 1903 CA set of ten to £1, 1904-08 MCA set to £1, 1921-27 Script set of eleven to 8/-, 1925-32 Script set of seven to £5 etc. chiefly fine and lightly mounted mint. S.G. £8,600+ £2,000-4,000



127

x127 ★ 1889-96 10c. carmine, variety value omitted, large part original gum. S.G. 23b, £7,000 £1,500-2,000



Ex 128

x128 ○ 1903 CA set of ten to £1, fine used; 1/- to £1 each used on piece tied by Registered oval obliterations. S.G. 46-55, £1,400 £280-350

1925-32 Watermark Multiple Script CA



129



130



131

- x129 ⊕ £5 violet and black, unmounted mint example from the foot of the sheet; fine and attractive. S.G. 108, £1,600 £600-800
- x130 ★ £5 violet and black, large part original off-white gum. S.G. 108, £1,600 £500-700
- x131 ○ £5 violet and black, used with part clear Registered oval of 8th February 1928, colour very slightly diffused; fine and very rare used. S.G. 108, £6,000 £1,000-1,500

GOLD COAST



Ex 132

- x132 ★ 1875-1941 mint collection on album pages with 1875 1d., 4d. and 6d., 1876-79 to 6d., 1883-91 to 2/-, 1894 20/- black and purple on red, 1898-1902 to 10/-, 1902 to 20/-, 1921-25 to £1, 1913-21 to 20/- etc. chiefly good to very fine £1,000-2,000



Ex 133

- x133 ★ 1902 CA set of eleven to 20/-, three sets; good to fine mint. S.G. 38-48, £1,275 £200-300
- x134 ★ 1902 CA set of eleven to 20/-, two sets, also 1938-43 set to 10/- and 1948 set to 10/-; good to fine mint. S.G. 38-48, 120-132 and 135-146, £1,000+ £200-300

GRENADA



Ex 135

x135

1861-99 unused/mint and used collection, the unused mint include 1861 1d. rose-red and 6d. rose-red imperforate plate proof pairs on wove paper, rough perf 14 to 16 1d. green (13 including a block of four and a pair), 1863-71 rough perf 14 to 16 1d. (13 including a block of four), 6d. rose (2), 6d. orange-red (2) and 6d. vermilion, 1873 wmk Small Star, clean-cut perf 15 1d. (8 including a pair), 1873-74 wmk Large Star, intermediate perf 15 1d. (2), 1875 (Dec.) perf 14 1d. (3), 1879 (Aug.) 1d. (3) and 6d. (2), 1879 (Dec.) 1d., 1881 (Apr.) 1d. (7 including a marginal block of four - some stained perfs), 1881 (Apr.) wmk Large Star ½d. pair with one showing 'OSTAGE', 2½d. (2) and 4d., 1886 1d. on 1½d. block of four and singles showing surcharge inverted (no gum and a little soiled) and variety 'HALH' (lightly stained on reverse), 1d. on 1/- (2) and wmk Small Star 1d. on 4d. (3), 1890 (Dec.) 1d. on 2/- (11 including two pairs), 1891 (Dec.) 2½d. on 8d. with surcharge double, one inverted (small stain at foot) and 1895-99 ½d. to 1/- (2 sets, one overprinted 'SPECIMEN'); the used include 1861 no wmk, rough perf 14 to 16 1d. (17 including a strip of three) and 6d. (9), 1878 (Aug.) 1d. (6) and 6d. (2), 1881 (Apr.) Large Star ½d. with variety 'OSTAGE' and Broad-pointed Star 2½d. (7), 1883 (Jan.) handstamped horizontally 1d. (3) and handstamped diagonally half of 1d. orange unsevered pair (perfs trimmed at top), 1883 ½d. to 1/-, 1886 (Oct.) 1d. on 1½d. with surcharge double and a diagonal bisect on piece with two whole stamps 1886 (Nov.) wmk Small Star 1d. on 4d. (2) and 1890 (Dec.) 1d. on 2/- (5 including two pairs). Condition mixed

£2,500-3,500



136

x136 田 1944 10/- slate-blue and carmine (wide), perf. 14 upper left corner block of four, unmounted mint with screwheads on selvedge. S.G. 163d , £560+

£200-300

PROVENANCE:
Murray Payne, November 2017

HONG KONG



137

- x137 ★ 1898 10c. on 30c. grey-green, variety **surcharge double** (Type 17), hinged original gum, a couple of tone spots to reverse barely affecting the appearance of this rarity. B.P.A. Certificate (2001). S.G. 55d, £12,000 £3,000-5,000



Ex 138



Ex 139



- x138 ★ 1903 CA set of fifteen to \$10, large part original gum, the \$10 lightly mounted; good to fine. S.G. 62-76, £3,000 £600-800
- x139 ★ 1938-52 Script set of twenty-three to \$10 including \$10 green and violet, which is a little toned as often found; chiefly fine and lightly mounted mint. S.G. 140-162, £1,100 £300-500

Postal Fiscal

- x140 ★ 1897 \$1 on \$2 dull bluish-green, variety **both Chinese handstamps omitted**, large part original gum, lightly mounted. S.G. F11a, £2,000 £400-600



140

INDIA



Ex 141

- x141 ★ 1902-11 3p. to 25r. with additional 3r., large part original gum; 5r. some toning. S.G. 119-147, £3,750 £1,400-1,800

India - *contd.*

Official Stamps

Service Stamps, The Reprints



————— 142 —————

143

- x142 R 1867 4a. purple and 8a. purple, both overprinted 'SERVICE/POSTAGE' in dark green, original gum. Giovanni Chiavarelli Certificates (1980) for both; attractive reprints of these very rare Official stamps. S.G. O17-O18 var. see Footnote after O19 £200-300
- x143 R 1867 8a. purple overprinted 'SERVICE/POSTAGE' in dark green, original gum; an attractive example. Giovanni Chiavarelli Certificate (1980). S.G. O18 var. see Footnote after O19 £100-200



144

- x144 ②⊕ 1925 Provisional Essay 1r. on 1909 15r. blue and olive-brown, unmounted mint example from the foot of the sheet; fine and scarce. Hammond Giles 3 £500-600
- PROVENANCE:
Murray Payne, November 2014

IRELAND



145

x145 ★ 1922 6mm. Thom overprint on Bradbury Wilkinson 5/- rose-carmine, horizontal pair from the right of the sheet, right stamp variety **accent reversed**, two light hinge remainders; fine. Roy Hamilton-Bowen Certificate (1996). S.G. 65, 65b, £985+ £200-300

PROVENANCE:
Sir John Dodd, May 1964
Gerard Brady, February 1996



146

x146 ★田 1922 6mm. Thom overprint on Bradbury Wilkinson 10/- dull grey-blue, block of four from the left of the sheet, upper right stamp variety **strokes over TEN**, full original gum with the lightest trace of a hinge on upper pair. Roy Hamilton-Bowen Certificate (2001). S.G. 66 Var. £300-400



147

x147 ★ 1922 6mm. Thom overprint on Bradbury Wilkinson 10/- dull grey-blue, horizontal pair from the left of the sheet, right stamp variety **no accent**, two light hinge remainders; fine and rare. B.P.A. Certificate (1932). S.G. 66, 66a, £3,190+ £1,000-2,000

JAMAICA

- x148 ★ A mint collection on stock leaves which includes a few early issues, 1883-97 CA values to 5/- (2), 1889-1901 1d. (8) and 2½d. (4), 1905-11 5/-, 1921-29 Script values to 10/- (4), 1938-52 set to £1 perforated 'SPECIMEN' and mint, plus Q.E. sets (3) to £1. The earlier Q.V. with some gum disturbances, later mostly unmounted mint £250-350



149

- x149 ★ 1941 5/- slate-blue and yellow-orange, **line perforated 14**, a very fine example of this King George VI rarity; the slightest trace of a mount and small pencil mark to foot. S.G. 52a, £7,000 £2,000-3,000
- Note: This rare stamp shows the emergency use of a line perforation machine, giving an irregular gauge of 14-14.15, after the De La Rue works were damaged in December 1940.*

KENYA, UGANDA AND TANGANYIKA



150



151



Ex 152



- x150 ★ 1903-04 CC 10r. grey and ultramarine, large part original gum; fine. S.G. 14, £450 £150-200
- x151 ★ 1903-04 CC 50r. grey and red-brown, fairly well-centred, fresh and fine; large part original gum. S.G. 16, £2,500 £800-1,000
- x152 ★ 1912-21 MCA 10r. red and green on green, 20r. black and purple on red, 20r. purple and blue on blue all unused and with large part original gum and 50r. dull rose-red and dull greyish green overprinted 'SPECIMEN', large part original gum; fine. S.G. 58-60 and 61s, £1,600 £300-400

1922-27 Watermark Multiple Script CA



————— 152A —————

153

154

- x152A ★ £1 black and orange and £2 green and purple, the £2 with off-white original gum; lightly mounted mint. Signed A. Diena. S.G. 95 and 96, £1,425 £300-350
- x153 ★ £3 purple and yellow, large part original gum; fresh and fine appearance. David Brandon Certificate (2015). S.G. 97, £1,800 £600-700
- x154 ★ £4 black and magenta, large part original gum; fresh, fine and well centred. S.G. 98, £3,000 £800-1,000



155

156

157

158

- x155 ★ £5 black and blue, large part original gum; fine and fresh appearance. S.G. 99, £3,250 £1,000-1,500
- x156 ☉ £50 black and brown, overprinted 'SPECIMEN', unmounted mint. S.G. 103s, £2,500 £500-600
- x157 ☉ £75 purple and grey, overprinted 'SPECIMEN', large part original gum, centred to left; fine and fresh appearance. S.G. 104s, £4,500 £1,000-1,500
- x158 ☉ £100 red and black, part original gum, overprinted 'SPECIMEN'; light crease at upper right and slightly centred to upper right; otherwise fine appearance. S.G. 105s, £5,000 £1,000-2,000

KUWAIT



————— Ex 159 —————

- x159 ★ 1929-37 part set of nineteen to 10r. green and scarlet, part to large part original gum; the 10r. with lightly toned gum, otherwise fine. S.G. 16-28, £550 £150-200

LABUAN

Postage Due



160

- x160 ○ 1901 8c. black and vermillion, variety **frame inverted**, cancelled-to-order as are all known examples; fine, an important and seldom offered rarity of the British Empire with fewer than thirty examples recorded. B.P.A. Certificate (2003). S.G. D6ba, £8,500 £3,000-5,000

LAGOS



Ex 161

Ex 162

- x161 ★ 1874-82 unused selection comprising 1874-75 CC perf 12½ 1d. to 1/- (value 16½mm. long) set of six and 1/- orange (value 15½ mm. long), 1876-79 CC perf. 14 1d. to 1/- with both 3d. shades and additional 4d. and 6d., 1882 CA 1d., 2d., 3d., and 4d., 1884-86 CA 2/6d., 5/- and 10/- each overprinted 'SPECIMEN' and 2/6d. issued stamp; chiefly good to fine, a few shortish perfs and hinge remainders. S.G. £4,200+ £700-900
- x162 ★ 1904 CA set of ten to 10/-, large part original gum; chiefly good to fine. S.G. 44-53, £650 £100-200

LEEWARD ISLANDS



Ex 163

- x163 ★ 1921-32 Script set to £1, three largely complete sets of twenty-two (each missing 1d. bright scarlet) but with an additional £1 value; chiefly fine and part to large part original gum. S.G. 58-80 , £1,500+ £250-350

MALAYA

Straits Settlements

x164 ★

1867-99 very fresh mint collection housed in an album including 1867-72 CC 6c. (2), 12c. (2) and 96c., 1879 5c. and 7c. surcharges, 1880 '10' on 30c. claret, 180 5c. on 8c. orange, 1880-81 10c. on 6c. lilac block of four, 1882 5c. on 4c. rose, 1883-91 to 96c. and 5c. and 24c. blocks of four, 1886 3c. on 5c. purple-brown, 1892-99 CA to \$5 etc. including other surcharges, blocks of four and larger; chiefly good to very fine

£1,200-1,600

1867 (1 Sept.) Surcharged on Stamps of East India

An Incredibly Rare Group of Specimen Stamps



165

x165 ©

1½c. on ½a. blue, 2c. on 1. brown, 3c. on 1a. brown, 4c. on 1a. brown, 6c. on 2a. yellow, 8c. on 2a. yellow, 24c. on 8a. carmine and 32c. on 2a. yellow, each handstamped 'SPECIMEN' (Type SS1), the 1½c. and 6c. without gum, the others with either small part or part original gum, all of good colour and perfs and in very good condition for the issue. Some of the rarest British Colonial Specimen stamps

£12,000-14,000

PROVENANCE:
Spink Singapore, August 2015

Malaya, Straits Settlements, 1867 (1 Sept.) Surcharged on Stamps of East India - *contd.*



166



167



168

- x166 ★田 2c. on 1a. brown block of four, unused with large part original gum, one very light tone spot between right vertical pair and one short perf at foot of lower left stamp, otherwise fine. The largest known multiple and one of just five that we record. S.G. 2 £1,000-1,500
- x167 ★田 3c. on 1a. deep brown, an upper right corner block of four, unused with part to large part original gum; a few short perfs at left, the lower right stamp with light stain and some light stains in selvedge, nevertheless an attractive and scarce multiple. S.G. 3 £1,000-1,500
- PROVENANCE:
Dr. Chua Eu Tiong, July 2005

- x168 ★ 1867-72 CC 12c. blue block of four, unused with part original gum; a few light tone spots to the reverse not affecting the appearance. S.G. 15, £1,000+ £200-300



169



Ex 170

- x169 ★田 1884 '8' on 8c. on 12c. brown-purple block of four, large part original gum; a rare multiple, fine. S.G. 80, £2,200+ £1,000-1,500
- PROVENANCE:
Joseph Wong Choon Wing, June 2007
Spink Singapore, August 2015
- x170 © 1892-99 CA 1c. to \$5 set of ten each overprinted 'SPECIMEN', part to large part original gum; fine and fresh appearance. S.G. 95s-101s, 103s-105s, £1,000 £300-400

1902-03 Crown CA Issue



Ex 171



172

x171 ☉ Set of fourteen to \$100 each overprinted 'SPECIMEN', part to large part original gum, 50c. dull green and carmine with faults including no gum, the rest fine and fresh. S.G. 110s-122s, £1,250+ £300-400

x172 ☉ \$100 purple and green on yellow, overprinted 'SPECIMEN', affixed to small piece of archival card. S.G. 122s, £750 £150-200



173



174



175



Ex 176

x173 ☉ \$100 purple and green on yellow, overprinted 'SPECIMEN', large part original gum; some light tone marks on reverse not affecting appearance. S.G. 122s, £750 £200-250

x174 ☉ 1904-10 MCA \$25 grey-green and black, overprinted 'SPECIMEN', lightly mounted mint; fine. S.G. 139s, £475 £150-200

x175 ★ 1904-10 MCA \$25 grey-green and black, part original gum; fine and rare. S.G. 139, £3,500 £1,000-1,500

x176 ★ 1906-07 4c. on 18c. black and pale brown of Labuan, variety 'FOUR CENTS' and bar 1½mm. below normal position in vertical pair with normal, offered with three single examples of the stamp with spaces of 12½mm., 11¾mm. and 11mm. respectively; each unused and with small part to large part original gum, a few short perfs and light toning in places. S.G. 146c etc. £2,750+ £600-650

Malaya, Straits Settlements - *contd.*

1906-12 Multiple Crown CA



177



178



179

- x177 ☉ \$25 purple and blue on blue, overprinted 'SPECIMEN', large part original gum. S.G. 168s, £750 £200-300
- x178 ★ \$25 purple and blue on blue, a well-centred example with large part original gum; fresh and fine. S.G. 168, £3,750 £1,300-1,600
- x179 ☉ \$500 purple and orange overprinted 'SPECIMEN', unmounted mint; fresh and fine appearance, rare in this condition. S.G. 169s, £4,750 £1,500-2,000



Ex 180

- x180 1912-41 collection including 1912-23 1c. to \$5 (5) mint and used with some additional papers/shades plus \$25, \$100 and \$500 overprinted 'SPECIMEN' and \$100 with fiscal cancel, 1917 (May) Red Cross 3c.+2c. mint corner block of eighteen (6x3) with one showing no stop, 1921-33 Script 1c. to \$25 mint and used plus \$500 and unissued 8c. carmine overprinted 'SPECIMEN', 1922 Exhibition 1c. to \$5 mint and used with some additional mint showing overprint varieties, 1935 Jubilee set perforated 'SPECIMEN', 1937-37 1c. to \$5 mint and used and 1937-41 1c. to \$5 mint with some additional shades; light gum toning throughout. S.G. £18,000+ £4,000-6,000

1912-23 Multiple Crown CA

- x181 1c. green (3), 1c. black, 2c., 3c., 4c. (both), 5c. (2), 6c. (2), 8c., 10c. purple on yellow (2), 10c. blue (2), 21c., 25c., 30c., 45c. (3), 50c. (2), \$1, \$2 (3) and \$5 (5), various shades/papers, fine mint; also \$25 overprinted 'SPECIMEN' (thin at top). S.G. 193-212 £400-600



182



183



184

- x182 ☉ \$25 purple and blue on blue overprinted 'SPECIMEN', fine and fresh. S.G. 213s, £650 £200-300
- x183 ★ \$25 purple and blue on blue, well-centred example with large part original gum. S.G. 213, £3,250 £800-1,000
- x184 ☉ \$100 black and carmine on blue overprinted 'SPECIMEN' in red, large part original gum; fresh and fine. S.G. 214s, £1,500 £400-500



185



186



187

- x185 ☉ \$500 orange and purple-brown overprinted 'SPECIMEN' and additionally overprinted 'COLONIAS' in violet across top right corner from the Portugese Postal Archives in Goa; large part original gum, very scarce. S.G. 215s var. £2,000-3,000
- x186 ☉ \$500 purple and orange-brown overprinted 'SPECIMEN', centred to upper right; part original gum, fresh appearance. S.G. 215s, £5,500 £1,000-2,000
- x187 ☉ \$500 purple and orange brown, overprinted 'SPECIMEN', large part original gum, fine. S.G. 215s, £5,500 £1,000-2,000

1921-33 Multiple Script CA



188



189

- x188 ☉ \$25 purple and blue on blue overprinted 'SPECIMEN', large part original gum. S.G. 240bs, £425 £150-200
- x189 ☉ \$100 black and carmine on blue overprinted 'SPECIMEN', lightly mounted; fine. S.G. 240cs, £1,000 £300-400

Malaya, Straits Settlements - *contd.*

1922 Malaya-Borneo Exhibition



190



191

x190 ★ \$1 black and red on blue variety **no stop after 'EXHIBITION'**, large part original gum. S.G. 247f, £1,400 £300-400

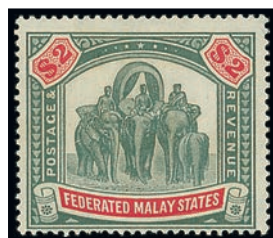
x191 ○ \$1 black and red on blue variety **no stop after 'EXHIBITION'**, used with part double ring datestamp; very rare and unlisted used by Stanley Gibbons. S.G. 247f £400-500

Federated Malay States



Ex 192

x192 ★ 1900 Overprints on stamps of Negri Sembilan set of eight to 50c. and Oveprints on stamps of Perak part set of five to \$5, unused with large part original gum; some gum toning, \$5 fine. S.G. 1-13, £1,690 £350-400



Ex 193



194

x193 ★ 1922-24 Script set of thirty-two to \$25, good to fine with part to large part original gum; a few with slight gum toning. S.G. 52-82, £3,000 £800-1,000

x194 ★ 1922-24 Script \$25 green and orange, well-centred example with large part original gum. S.G. 82, £2,250 £500-600

Johore



195



196



197



198

- x195 ○ 1884 2c. pale rose (Type 5) variety **overprint double** cancelled by Johore Bahru Star and Crescent double-ring handstamp; upper right corner perf crease otherwise fine. B.P.A. Certificate (1965). S.G. 5a, £2,500

£500-600
- x196 ⊕田 1904-10 \$50 green and ultramarine, unmounted mint block of four, fine and a scarce multiple; light gum wrinkles. Signed A. Diena and with his certificate (1967). S.G. 76, £1,900

£500-700
- x197 ⊕田 1904-10 \$100 green and scarlet, block of four from the top of the sheet, unmounted mint, fine and a scarce multiple; signed A. Diena and with his certificate (1967). S.G. 77, £2,600

£700-900
- x198 ★ 1922-41 Script \$10, lightly mounted mint; some trimmed perfs. S.G. 125, £350

£80-100

Kedah



Ex 199

- x199 ○ 1937 Script set of nine to \$5, each lightly cancelled. S.G. 60-68, £275

£70-90

Malaya - *contd.*

Kelantan



Ex 200

x200 ©

1937-40 Script set of fifteen to \$5 each perforated 'SPECIMEN', lightly mounted mint; fine and scarce. S.G. 40-54, £1,100

£300-400

Negri Sembilan

Revenue Stamp



201

x201 ★

1935 Script 'REVENUE/REVENUE' \$25 purple and blue on blue, a fine unused example of this scarce high value; lightly toned gum

£500-600

Pahang



202

x202 ○

1897 (2 Aug.) 2c. on half 5c. blue and 3c. on half 5c. blue, se-tenant pair, surcharged in red manuscript, used; toning and pencil notations to reverse. Brandon Certificate (2014). S.G. 18b, £1,100

£400-500

Perak



203



204

- x203 ○ 1886 1c. on 2c. pale rose variety **surcharge double**, a used example cancelled by oval of bars; manuscript ink and toning to reverse, nevertheless scarce. R.P.S.L Certificate (1963). S.G. 28a, £1,800 £400-500
- x204 ○ 1887-89 1c. on 2c. pale rose variety 'PREAK' for 'PERAK' [R.6/1], lightly cancelled by oval of bars leaving the surcharge clearly visible; fine and scarce. S.G. 35a, £1,100 £300-400



205

- x205 ★ 1899 CC \$25 green and orange, an unused example with large part original gum, fresh and fine appearance, very lightly toned gum and centred slightly to lower left; an attractive example of this scarce high value. S.G. 80, £12,000 £3,000-5,000



Ex 206

- x206 ★ 1938-41 Script set of nineteen to \$5, large part original gum; fine. S.G. 103-121, £1,100 £400-500

Malaya - *contd.*

Selangor



Ex 207

208

- x207 ★ 1895-99 CC \$1 to \$5 part set of four, part to large part original gum; the \$3 with a couple of tiny tone spots to the gum and \$5 with some creasing and a couple of patches of missing gum. S.G. 61-64, £1,450 £200-300
- x208 ★ 1899 \$10 green and purple, large part original gum; fine and fresh. S.G. 65, £900 £200-300

Trengganu



Ex 209

210

- x209 ☉ 1910-41 selection of stamps overprinted or perforated 'SPECIMEN' comprising 1912 MCA \$25 rose-carmine and green, 1921-41 MCA \$1 to \$5 set of three and Script set of twenty to \$25, a few heavily mounted but chiefly good to fine. S.G. 18s, 23s-45s, £1,925 £350-450
- x210 ★ 1910-19 MCA \$25 rose-carmine and green, large part original lightly toned gum, otherwise fine. Ceremuga Certificate (2013). S.G. 18, £1,700 £400-500

1921-41 Multiple Script CA



Ex 211

212

- x211 ★ 1c. to \$5 set of nineteen, the \$5 soiled at foot, others chiefly fine and large part original gum. S.G. 26-44, £775 £150-200
- x212 ★ \$25 purple and blue, a handsome example of this sought after high value with large part original gum. Signed A. Diena. S.G. 45, £1,400 £400-500



213



214

- x213 ★ \$50 green and yellow, large part original gum; fine and fresh appearance, an attractive example of this scarce stamp. S.G. 46, £3,250 £800-1,200
- x214 ★ \$100 green and scarlet, bright colours and large part clean original gum; a fine and fresh example of the scarcest stamp of Trengganu. A rare opportunity to acquire this handsome high value. S.G. 47, £9,500 £3,000-5,000

MALTA



Ex 215

- x215 ★ 1860-1970 largely complete mint collection housed in a Lindner album including 1860 no watermark ½d. (2), 1863-81 CC ½d. (4), 1886 5/-, 1904-14 set of seventeen to 5/-, 1914-21 set to 5/-, 1919 MCA 10/- marginal from the top of the sheet with B.P.A. Cert (1986), 1921-22 set to 10/- and also 10/- fine used with R.P.S. Cert (2000), 1922 Self Government set to 10/-, 1922-26 Script set to £1, complete thereafter to 1970 including Postage Dues; chiefly good to fine £2,000-4,000



216



217

- x216 ★ 1919 MCA 10/- black, large part original gum; scarce. Signed E. Diena. S.G. 96, £3,250 £800-1,000
- x217 ★ 1919 MCA 10/- black, an unused example without gum; nevertheless fresh appearance, scarce. S.G. 96, £3,250 £400-500

MAURITIUS

1848-59 Post Paid Issue



218



219



220



221



222

- x218 ○ 1d. orange-vermilion on yellowish paper, earliest impression, just cut into at foot with close margins on other sides, used by '3' circle cancellation of Souillac; slightly thinned at top, a presentable example of this scarce stamp. S.G. 3, £18,000 £800-1,000
- x219 ○ 1d. vermilion on yellowish paper, early impression, position ten; good to large margins used by light double ring numeral cancellation, fine and fresh appearance. Signed A. Diena and accompanied by B.P.A. Certificate (2014). S.G. 6, £7,500 £2,000-4,000
- x220 ○ 1d. orange-vermilion, early impression with good to enormous margins used by target cancellation; fine and fresh appearance. Brandon Certificate (1994). S.G. 7, £7,000 £1,500-2,000
- x221 ○ 2d. deep blue on bluish paper, early impression with good to large margins cancelled by double circle numerical; very slightly thinned at top where a hinge has been removed, otherwise fine appearance. S.G. 9, £9,500 £1,000-2,000
- x222 ★ 1d. bright vermilion, intermediate impression, an unused example with three good margins but just cut-into at top; expertly repaired thin, bright and fresh appearance. Pascal Scheller Certificate (2010). S.G. 10, £23,000 £3,000-5,000



223



224



225



226



227

- x223 ○ 1d. red on bluish paper, intermediate impression, cancelled by indistinct target numeral; fine with well balanced good margins. Signed A. Diena. R.P.S. Certificate (1957). S.G. 12, £3,000 £500-700
- x224 ○ 2d. blue, intermediate impression, good margins and cancelled by numeral '1', tiny thin spot in margin at lower right, not affecting the appearance at all. signed Bloch and with his certificate (1983). S.G. 14, £3,500 £600-800
- x225 ○ 2d. light blue, intermediate impression, good to large margins used by concentric circle cancellation; repaired at top, still a presentable example of this scarce stamp. S.G. 15, £3,500 £500-700
- x226 ○ 1d. red on bluish paper, worn impression, used pair with good to large margins and 'INLAND' boxed hand stamp, small tear at right and vertical crease; nevertheless an attractive pair showing the entire cancellation. R.P.S. Certificate (1944). S.G. 18, £1,800 £300-400
- x227 ○ 2d. blue, worn impression, good to large margins and very lightly cancelled by indistinct postmark, fine and attractive. S.G. 22, £1,600 £400-500

1859 Lapirot Issue



228



229

- x228 ○ 2d. blue, early impression, large even margins, cancelled by neat barred oval; light horizontal bend otherwise fine. B.P.A. Certificate (1983). S.G. 37, £3,250 £800-1,200
- x229 ○ 2d. blue, early impression, huge even margins used by concentric circles cancellation, small part of manuscript rate to foot; fine and attractive. Brandon Certificate (2004). S.G. 37, £3,250 £800-1,000



230

- x230 △ 2d. blue, intermediate impression with large to huge margins tied to small part of a cover by void barred ovals; has been lifted and replaced, filing fold at top pressed, very fine appearance nevertheless. S.G. 38, £1,400 £400-500



231

- x231 ○ 2d. blue, worn impression, used pair positions 9-10, good to enormous margins, cancelled by two crisp void barred ovals; contemporary manuscript mark to lower right; fine. Ceres Certificate (1982). S.G. 39, £1,800 £600-800

Mauritius - *contd.*



232

x232 ★ ㊦

1863-72 CC 5/- rosy-mauve, block of sixteen (4x4) from the foot of the sheet with plate number '1', each overprinted 'CANCELLED' in black; mounted on four stamps only, the rest unmounted, an attractive multiple. S.G. 71, £4,400

£800-1,000



———— 233 ————

x233 ㊦

1938-49 set of twelve to 10r. perforated 'SPECIMEN', very lightly mounted, the majority unmounted. S.G. 252s-263s, £425

£100-200

NATAL



Ex 234

Ex 235

- x234 ○ 1902-03 CA ½d. to 4/- and 1902 CC 5/- to £5, all used with predominantly crisp c.d.s. cancellations of Durban or Pietermaritzburg; good to fine, some with light soiling. S.G. 127-144, £1,900+ £300-600
- x235 ★ 1908-09 'POSTAGE/POSTAGE' £1 purple and black on red, two examples both unused with large part original gum. S.G. 171, £850 £200-300

NAURU



236

- x236 ⊕ 1916-23 Waterlow 10/- indigo, overprinted 'NAURU' in red, an unmounted mint example from the right of the sheet; toned gum and a couple of creases; still a scarce stamp, particularly in unmounted condition. Peter Holcombe Certificate (1995). S.G. 18, £11,000+ £1,500-3,000

NEW BRUNSWICK



237



238

- x237 ★ 1851 1/- reddish mauve, a bright red-violet shade, on blued paper; unused without gum, upper left corner slightly thinned, otherwise an attractive and fresh example. Vincent Greene Certificate (2014). S.G. 5, £22,000 £2,000-3,000
- x238 ★ 1860-63 Charles Connell, 5c. brown, prepared for use but not issued; skillfully repaired with margin added at right and therefore additionally reperforated; nevertheless scarce and attractive appearance. Sergio Sismondo Certificate (2017). S.G. 13, £10,000 £1,000-2,000

NEWFOUNDLAND



Ex 239

x239 ★

1865-1949 mint collection in stockbook 1865-70 values to 24c. (4), 1868-73 including 5c. black, 1880-82 to 5c., 1887 values to 10c. and similar issues, 1897 Discovery set, 1910 8c. imperf. plate proof pair, 1911-16 Coronation set, 1923 views set, 1928-29 Publicity set, 1931 Air set (3), 1932 set, 1932-38 with imperforate pairs (9) and 1c. block of four, 1933 Air set and Balbo \$4.50 on 75c., 1933 Gilbert set, 1937 long Coronation set, and later issues; also 1939-49 Postage Due set (2) plus small selection of New Brunswick, Nova Scotia, Vancouver Island 1865 10c. and other Canadian territories. Generally lightly mounted or unmounted mint

£1,000-2,000

Airmails



240

x240 ☒ ④

1919 'Hawker' 3c. brown signed 'J.A.R.' on reverse, used in combination with eight other contemporary adhesives totaling 26c. on Supplementary mail cover to the French Embassy in London, tied by St. John's, Newfoundland c.d.s. of 2 May, barred oval cancellations and a machine cancellation, Kingston-on-Thames c.d.s. to front and London W.C. c.d.s. to reverse; envelope slightly reduced at top and bottom and with light foxing not affecting stamps; a scarce and unusual usage of this classic Airmail stamp. A.P.S. (2011) and Vincent Greene (2012) Certificates. S.G. 142, £12,000

£3,000-5,000



241

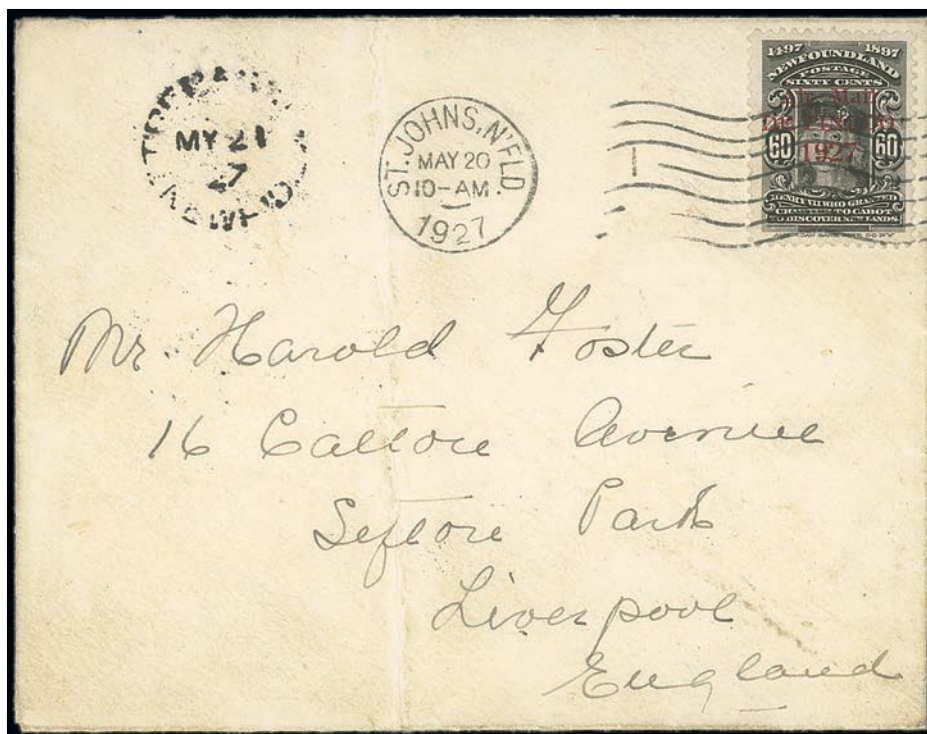


243

x241 ★Ⓢ

1921 35c. red, with varieties **no stop after '1921'** and **overprint inverted**, a fine and fresh example with large part original gum, a key and extremely rare Airmail variety. Signed E. Diena and accompanied by his certificate (1983). S.G. 148e, £27,000

£6,000-8,000



242

x242 Ⓢ

1927 (20 May) envelope to Liverpool bearing 60c. black overprinted 'AIR MAIL/DE PINEDO.1927' in red, tied by machine cancellation and 'ST. JOHNS N'FLD/MAY 20/1927' c.d.s. alongside, carried on the Trepassey-Rome-London flight; central vertical filing fold to envelope; a fine and attractive example of this Airmail rarity. S.G. 163

£8,000-12,000

x243 ★Ⓢ

1930 50c. on 36c. sage-green, a fine and well centred example with large part original gum; fine and scarce. signed E. Diena and accompanied by his certificate (1991). S.G. 191, £6,500

£2,000-3,000

NIGER COAST

Oil Rivers Protectorate



244



245

- x244 ○ 1893 (Dec.) ½d. on 2½d. violet with surcharge (Type 9) in vermilion, a fine used example. Signed Bloch. S.G. 31, £700 £150-200
- x245 ★ 1893 (Dec.) ½d. on 2½d. violet with surcharge (Type 9) in green, unused with part original gum. B.P.A. Certificate (1987). S.G. 33, £450 £100-200

NORTH BORNEO

- x246 ★ 1894 (Feb.) Pictorials, a mint range with many of the perforation varieties, comprising 1c. (13 with two blocks of four), 2c. (19 with three blocks of four), 3c. (10 with two blocks of four), 5c. (7 with a block of four), 6c. (7 with a block of four), 8c. (8 with a block of four), 12c. (12 with a block of six and a corner pair), 18c. (8 with a block of four) and 24c. (8 with a block of four); generally good to fine £300-500



247

- x247 ○ 1897-1902 8c. black and brown-purple vertical strip of four, variety **imperfornate between**, neatly cancelled by Sandakan c.d.s.; closed tear at foot, otherwise sound. S.G. 102ab var. £150-200

- x248 1906-48 mint and used collection of British Borneo including Brunei including 1906 1c. to \$1 on 8c. used and 1922 Exhibition 1c. to \$1 mint; Labuan including 1892-93 2c. to 40c. mint and used, 1902-03 1c. to \$1 mint; North Borneo including 1901-05 British Protectorate \$1 with red overprint and \$2 used, 1939 1c. to \$5 mint, 1945 BMA 1c. to \$5 used, \$2 and \$5 mint, 1947 1c. to \$5 mint, 1948 Wedding, 1950-52 1c. to \$10 and used, 1954-59 1c. to \$10 mint and used; Sarawak including 1918 1c. to \$1 used, 1922-23 2c. to 30c. used, 1932 1c. to \$1 mint, 1934-41 1c. to \$10 mint and used, and 1948 Silver Wedding mint. Condition generally good to fine £1,000-1,500



249



Ex 250



- x249 ○ 1909-23 12c. black and deep blue horizontal pair, variety **imperforate between**, neatly cancelled-to-order, fine and scarce. S.G. 173b, £800 £250-300
- x250 ★ 1916 (May) stamps of 1909-11 overprinted with cross in vermilion (thick shiny ink) set of thirteen to 25c. large part original gum; the 25c. with vertical crease. S.G. 189-201, £1,000 £200-300



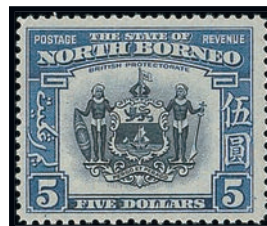
251



Ex 252



- x251 ○ 1922 Malaya-Borneo Exhibition 1c. brown, variety 'BORNEQ' for 'BORNEO', used with crisp part Jesselton c.d.s.; a little toned, scarce nonetheless. R.P.S. Certificate (2002). S.G. 253b, £1,000 £200-300
- x252 © 1939 set of fifteen to \$5, each perforated 'SPECIMEN', lightly mounted; fine. S.G. 303s-317s, £650 £150-250



Ex 253

- x253 ★ 1939 set of fifteen to \$5, lightly mounted mint, fine. S.G. 303-317, £1,400 £250-350
- x254 ★ 1939-65 (Sabah) mint collection with the basic issues complete less 1954-59 set, additional items include 1941 War Tax blocks of twenty-five, 1945 BMA set (5 with blocks of four), 1948 Wedding and 1949 UPU, 1956, 1961 and 1964-65 sets in blocks of four; 1945 \$2 block with some tones though generally fine. S.G. £5,000+ £500-700

North Borneo - *contd.*

Postage Due Stamps

x255 ★

1895-1938 predominantly mint collection, including 1895-97 2c., 3c., 5c., 18c. (overprint reading upwards) and 24c. blocks of four, and 18c. overprint reading downwards without gum; 1897-99 2c. (3), 3c., 4c., 5c. (2), 6c. and 8c. (both colours) blocks of four; 1901-02 3c. and 5c. blocks of four, and 3c. with **overprint double** (2); 1902-12 British Protectorate, overprint vertically reading up 3c., 5c. and 8c., used, overprint horizontally at centre 1c., 4c. blocks of four (2) and eighteen, 5c. strip of five and blocks of four and six (2), 16c., 18c. and 24c. blocks of four and 18c. with **overprint double** (trace of cancellation), and overprint horizontally at top 2c. (4) and 4c.; 1918-30 on 1909-23 selection of blocks of four to 16c.; 1930-38 selection of blocks of four to 16c. and a used selection to 16c.; also Revenue 1894 \$25 mint block of four; a few with foxing in places though generally good to fine. Cat. £13,000+

£1,500-2,500



256

x256

1895-97 8c. black and dull purple marginal block of four from the foot of the sheet, variety **overprint double**, neatly cancelled-to-order, fine. B.P.A. Certificate (2003) for a block of six, this being the right-hand block of four. S.G. D7a, £1,500

£500-600

NORTHERN NIGERIA



Ex 257

x257 ★

1900 CA set of nine to 10/-, unused with part to large part original gum; chiefly good to fine. S.G. 1-9, £550

£100-200

NOVA SCOTIA



258

- x258 ★ 1851-60 6d. yellow-green, good to large margins and fresh appearance; unused without gum. Philatelic Foundation Certificate (2008). S.G 5, £4,750 £700-900

NYASALAND



259



Ex 260

- x259 ★ 1895 £10 black and orange-vermilion, unused with original gum; light horizontal crease. R. Menozzi Certificate (2009). S.G. 30, £8,000 £1,000-2,000
- x260 ☉ 1903-04 CA set of ten to £10 each overprinted 'SPECIMEN', large part original gum, a couple of very light tone spots in places, otherwise fine. S.G. 59s-67s, £925 £250-350



261



Ex 262

- x261 ★ 1903-04 CA £10 grey and blue, a fairly well-centred example of this rare high value, lightly mounted mint; signed Behr and E. Diena, accompanied with E. Diena Certificate (1990). S.G. 67, £8,500 £3,000-5,000
- x262 ★ 1908-11 set of ten to £1 and 1913-21 set of twelve to £1, good to fine and with large part original gum; the odd tone spot on some values. S.G. £1,300+ £300-400

Nyasaland - *contd.*



263

- x263 ★ 1908-11 MCA £10 purple and ultramarine, fresh and lightly mounted mint. A most attractive example of this rare high value, signed A. Diena and E. Diena and accompanied by Certificates from both, (1965) and (1992) respectively. S.G. 82, £12,000 £5,000-6,000

PROVENANCE:
Richard Tompkins, November 2006



264



265



266



267

- x264 ☉ 1913-21 MCA £10 purple and dull ultramarine, overprinted 'SPECIMEN', large part original gum. S.G. 99s, £800 £150-250

- x265 ★ 1913-21 MCA £10 purple and dull ultramarine, marginal from the foot of the sheet, fresh bright colours; large part original gum. A fine example of this scarce high value. Philatelic Foundation (1975) and Brandon (1989) Certificates. S.G. 99, £8,000 £2,500-3,500

PROVENANCE:
Richard Tompkins, November 2006

- x266 ★ 1919 MCA £10 purple and royal blue, well-centred and fresh, large part original gum; signed A. Diena. S.G. 99e, £4,000 £1,500-2,500

- x267 ○ 1919 MCA £10 purple and royal blue, variety **nick in top right scroll**, a fiscally used example; this variety is scarce and not listed by Stanley Gibbons used. R.P.S. Certificate 'after comparison' (2010). S.G. 99e var. £250-300

PRINCE EDWARD ISLAND



Ex 268

x268 ★

1862-69 unused group with imperforate varieties (7) including 2d. rose single example **imperforate at lower margin**, vertical pair (2) each with variety **imperforate horizontally** and horizontal pair (2, one without gum) each with variety **imperforate vertically**, 3d. blue single example **imperforate at lower margin** and 9d. reddish mauve horizontal pair variety **imperforate vertically**; chiefly good to fine and large part original gum, the 9d. pair with toned gum

£600-800

RHODESIA



269



270

x269 ★田

1896-97 8d. green and mauve on buff, a block of four from the top of the sheet, lower pair variety **imperforate**, large part original gum; a fine and scare positional piece with this rare variety. S.G. 34b, £4,250+

£1,000-2,000

x270 ★

1897 3d. brown-red and slate-blue vertical pair, variety **imperforate between**, mounted on the upper stamp only; a fine and fresh example of this scarce and popular error. S.G. 69a, £4,750

£1,000-1,500

Rhodesia - *contd.*

1898-1908



Ex 271

x271 ★

A mint selection comprising 1/2d. yellow-green horizontal pair variety **imperforate vertically**, 1d. rose horizontal pair variety **imperforate** and horizontal strip of three from the left of the sheet variety **imperforate vertically**, 2 1/2d. dull blue horizontal pair variety **imperforate horizontally**, 3d. claret and 4d. olive each vertical pair with variety **imperforate horizontally**; chiefly good to fine and with part to large part original gum, the 1/2d. pair with tone spot to the face of right stamp and the 1d. strip of three with some toning and creasing, though generally fine. S.G. 75aa, 77a, 77c var., 80a, 81a, 82a, £4,800+

£1,000-2,000



272



273

x272 ★田

1d. rose block of four, variety **imperforate between vertically**, large part original gum; fine and scarce. S.G. 77b, £1,100

£300-400

x273 ★田

1d. rose block of four, variety **imperforate between vertically**, large part original gum; fine and scarce. S.G. 77b, £1,100

£300-400



274



275



276

- x274 ★ £5 deep blue, an unused example without gum having been rescued from the British South Africa Company archives which were affected by water during the Second World War; fine and fresh appearance. Ceremuga Certificate (2016). S.G. 92, £3,250 £600-800
- x275 ★ £10 lilac, an unused example without gum having been rescued from the British South Africa Company archives which were affected by water during the Second World War; fine and fresh appearance. Ceremuga Certificate (2016). S.G. 93, £3,500 £700-900
- x276 ★ 1909-12 £5 deep blue on bluish paper, an unused example without gum having come from the Waterlow archives which were affected by water as a result of bombing during the Second World War; colour slightly diffused and with a vertical crease. Ceremuga Certificate (2015). S.G. 113e, £9,500 £800-1,000

1910-13 Double Head Issue

Perforated 14



Ex 277

- x277 © Set of eighteen to £1, overprinted 'SPECIMEN', removed from archival pages so the majority with paper adhesion to the reverse; a few with blunt corners, the 1/- with some tone spots and the 3/- with diagonal crease, nevertheless a scarce set of Specimen stamps. S.G. 119s-185s, £3,750 £600-800

THE PHILATELIC COLLECTORS' SERIES SALE

13-14 July 2020
LONDON | 69 SOUTHAMPTON ROW

Your Specialist: Iain Murphy
Tel.: +44(0)20 7563 4060
Email: imurphy@spink.com



Rhodesia, 1910-13 Double Head Issue, Perforated 14 - *contd.*



278

- x278 ★ ½d. bluish green vertical pair, variety **imperforate**, positions 25 and 35, unused without gum, good to huge margins all around; lightly soiled at upper left and very light vertical crease not affecting the fine appearance; rare. S.G. 120a, £15,000 £4,000-6,000



279

- x279 ★ 3/- green and violet, 3/- magenta and bright green and 10/- deep myrtle and orange, all unused with large part original gum; the magenta and bright green with tiny thin spot, otherwise fine. S.G. 158, 158a and 163, £2,200 £500-700



280



281

- x280 ★ 7/6d. carmine and light blue, a variant with bright carmine heads and bright frame, centred to upper left; small part original gum, a few small tone marks to reverse. S.G. 161 var. £150-200
- x281 ★ £1 carmine-red and bluish black, large part original gum, fine and attractive. S.G. 165, £1,600 £350-450



282



283



- x282 ★ £1 rose-scarlet and bluish black, lightly mounted mint; tiny handstamp to reverse in one corner. S.G. 166, £1,750 £400-500
- x283 £1 rose-scarlet and bluish black, matched mint and used examples; the mint very well-centred with large part original gum and the used with clear part Salisbury double ring c.d.s.; fine and attractive. S.G. 166, £2,125 £400-500

Perforated 15



284

- x284 ★ £1 red and black, fresh colours and large part original gum; tiny tone spot just below upper perforations barely affecting the fine appearance of this rare stamp. Signed E. Diena and accompanied by his Certificate (1990). S.G. 179, £18,000 £4,000-6,000



285

- x285 ○ £1 scarlet and deep slate, neatly cancelled by Bulawayo 1918 c.d.s., trace of a thin at top, otherwise fine. S.G. 179 group, £3,250 £300-400

Rhodesia - contd.



Ex 286

x286 ★田

1913 Admiral ½d., 1d., 1½d. and 2½d. Die II 8d., 10d. and 7/6d., Die IIIB 2d., 3d., 4d., 5d., 6d., 1/-, 2/-, 2/6d. and 5/- all in corner blocks of four except the ½d. which is upper marginal; large part original gum, some minor gum bends and the 7/6d. with very light soiling and diagonal crease affecting the margins and upper left stamp; attractive multiples. S.G. 186-240 group

£500-600



287

x287 ★

1913-19 Die II perf. 14, £1 black and purple and £1 black and deep purple, both unused with large part original gum; fine. S.G. 242, 243, £875

£200-250

Revenue Stamps



288

x288 ○

1897 £30, £50 and £100, each perforated and used with violet Registration stamps; fine and scarce. Barefoot 11-13

£150-250

ST. CHRISTOPHER



Ex 289

- x289 ★ 1882 CA ½d. to 1/- set of nine including 1d. dull magenta and 4d. blue (no 2½d. deep red-brown), all fine and fresh with part to large part original gum. S.G. 11-14, 16-20, £1,500+ £300-400



290

- x290 ★ 1886 (Jun.) 1d. on 6d. green variety **surchage inverted**, unused without gum; a well centred and fresh example of this striking error. B.P.A. Certificate (1975). S.G. 24a, £9,000 £2,000-4,000

ST. HELENA



291



Ex 292

293

- x291 ★ 1861 clean-cut perf 14 to 16, 6d. blue unused with part original gum; fine and fresh colour. R.P.S. Certificate (1953). S.G. 2, £1,700 £400-600
- x292 ★ 1922-37 MCA 4d. to £1 set of five, three sets, all large part original gum and fresh. S.G. 92-96, £1,500 £300-400
- x293 ★ 1922-37 Script 5/- grey and green on yellow variety, **broken mainmast**, unused with large part original gum; fine and fresh. S.G. 100a, £750 £300-400



294



Ex 295



- x294 ★ 1922-37 Script 15/- grey and purple on blue, large part original gum; fairly well-centred and fine. S.G. 113, £1,100 £400-500
- x295 ★ 1934 Centenary of British Colonisation set of ten to 10/-, two sets, all with large part original gum. S.G. 114-123, £850 £200-300

ST. KITTS-NEVIS



296



Ex 298

- x296 ★ 1876 1/- yellow-green, unused without gum; centred to top, fresh and fine appearance. Signed A. Diena and with his certificate (1975). S.G. 14, £850 £150-200
- x297 ★ A mint collection in stockbook with St. Christopher 1870-80 1d., 1880-90 values to 1/- including 6d. overprinted Specimen; Nevis including 1866-76 1/- yellow-green, superb, large part original gum (B.P.A. Cert.); St. Kitts-Nevis from 1903 to 5/-, 1920-22 values to £1, Tercentenary to 1/-. 1938-50 to £1, later issues to 1963-69 to \$5. A good lot, generally lightly mounted or unmounted mint £500-700
- x298 ☺ 1920-22 MCA ½d. to £1 set of thirteen, each overprinted 'SPECIMEN', part to large part original gum; the 2½d. slightly rubbed and creased. S.G. 24s-36s, £350 £80-100



Ex 299

- x299 ★ 1920-22 MCA ½d. to £1 set of thirteen, five sets, part to large part original gum and good to fine. S.G. 24-36, £1,750 £300-400

ST. LUCIA



Ex 300

- x300 1858-1964 mint and used collection, largely complete including 1856 GB 6d. lilac cancelled 'A11' (2), 1860 small star 1d. to 6d. mint (2 of each), 1863 CC values to 6d. mint and used, 1863 ½d. on 6d. emerald-green mint pair, 1864 CC with values to 1/- mint and used, 1883-86 CA set to 1/- mint and used, 1886-87 set to 1/- mint and used, 1891-98 CA set to 10/- mint and duplicated used, 1904-10 MCA set to 5/- mint and used, 1912-21 MCA set to 5/- mint and used, 1936 Script set of twelve to 10/- mint and used, some covers, Postage Dues, Revenues, blocks of four etc. mixed condition, plenty good to fine £2,500-3,500

ST. VINCENT



301



302



304

- x301 ★ 1873 6d. dull blue-green, small part original disturbed gum. B.P.A. Certificate (2007). S.G. 19, £2,000 £500-600
- x302 ★ 1873 1/- lilac-rose, perf. 11-12½ x 15, unused without gum; a few short perfs. S.G. 20, £5,500 £500-600
- x303 ★ 1875-1963 mint collection on stockleaves with issues from 1875-78 4d. watermark star, other first issues to 1890-93 1/- (5) and 5/-, 1899 to 1/-, 1904-11 5/- and £1, 1913-17 £1, 1921-32 £1, 1938-47 set to £1 perforated 'SPECIMEN' and unmounted mint, later issues to 1955-63. First issues with mixed gum, later generally fine, lightly mounted or unmounted mint £250-350
- x304 ★ 1880 1d. on half 6d. deep blue-green, **unsevered pair**, part original gum; fine and fresh appearance. R.P.S. Certificate (1962). S.G. 28a, £2,000 £500-700



Ex 305

- x305 ☉ 1935-46 small group perforated 'SPECIMEN' including 1935 Silver Jubilee, 1937 Coronation, 1938-47 set to £1 and 1946 Victory; chiefly very fine and unmounted mint. S.G. £570+ £150-250

SAMOA



306



Ex 307

- x306 ★ 1914 'G.R.I. 1 Shillings.' on 1m. carmine, large part original gum; a scarce stamp with only one hundred surcharged. B.P.A. Certificate (2000). S.G. 110, £3,250 £800-1,000
- x307 ★ 1945-63 'WESTERN SAMOA' overprints on Postal Fiscal stamps of New Zealand set of eight to £5, lightly mounted mint or unmounted; £5 signed A. Diena. S.G. 207-214, £1,300+ £300-400

SARAWAK

x308 1869-1965 mint and used collection on pages including a range of the 1869 3c. brown on yellow unused (4), 1888-97 set to \$1 both unused and used, 1888-92 Surcharges, 1899-1908 to \$1 unused, 1918 set to \$1 unused, 1928-29 set to \$1 mint, 1934-41 set to \$10 both mint and used, 1945 BMA part set to \$4 both mint and used, 1946 Centenary set in mint blocks of four etc. chiefly good to fine £600-800

x309 ★ 1888-1952 mint collection including 1888-97, 1899-1908, 1918, 1928-29, 1932, 1934-41 (3, one used), 1945, 1947 and 1950 sets, other items with 1923 bars 1¼mm. apart 1c. on 10c. used block of four and bars ¾mm. apart 1c. on 10c. bright blue and 2c. on 12c. with thick narrower 'w' in 'TWO' (3, two contained in a block of four) and 1934 10 complete sheets (some foxing). Chiefly good to fine. S.G. in excess of £7,500 £1,000-2,000



310



311

x310 ○ 1899 2c. on 12c. red on pale rose variety, **surcharge inverted**, fine used example with Sarawak c.d.s.; slightly stained in places, nevertheless a rare stamp. B.P.A. Certificate (1952). S.G. 33a, £1,400 £300-400

x311 ⊕ 1918 1c. slate blue and slate, two examples with trial overprints 'RED CROSS/THREE CENTS' in red and black respectively. unmounted mint, rare essays £300-400



312



Ex 313

x312 ○ 1923 'ONE CENT' on 10c. dull blue variety, 'CNET' for 'CENT', fine used with part crisp Sarawak c.d.s. of February 1923, B.P.A. Certificate (1983). S.G. 72a, £900 £250-350

x313 ⊕ 1945 British Military Administration set of twenty to \$10, unmounted mint and fine. S.G. 126-145, £550 £200-300

SEYCHELLES



314

- x314 ○ 1889 Postal Fiscal 4c. lilac of Mauritius overprinted 'INLAND/REVENUE' and cancelled with a very clear strike of 'B64'; very fine and one of only two examples recorded. Brandon Certificate (2012). S.G. ZR1 £2,000-4,000
- PROVENANCE:
 Commader M. Burnett, 1978
 Jeffrey K. Weiss, December 2004

SIERRA LEONE

- x315 1859-1949 mint and used collection on album pages including 1859-93 used selection with values to 1/-, 1896-97 CA set to £1 mint, 1903 CA to 1/- mint, 1904-05 MCA to 5/- mint and used, 1907-12 MCA to 5/- mint and £1 used, 1912-21 MCA with 10/- and £1 mint and to 10/- used, 1921-27 Script with values to 10/- mint, 1933 Wilberforce set to 5/- used etc; chiefly good to fine £500-700



Ex 316



Ex 317

- x316 ★ 1897-1921 mint selection comprising 1897 'POSTAGE AND REVENUE' Stamp Duty overprints comprising 1d., 2½d. on 3d. (4 types) and 2½d. on 6d., 1903 CA set to £1 (no 1½d.) and 1912-21 MCA set to £1; part to large part original gum and good to fine, a few short perfs in places, S.G. 54-62 group, 73-85 and 112-128 £500-700
- x317 © 1932 Script ½d. to £1 set of thirteen, each perforated 'SPECIMEN', lightly mounted mint. S.G. 1552-167s, £325 £80-120

SOMALILAND



Ex 318

x318 © 1935-46 selection of stamps overprinted 'SPECIMEN' including 1935 Silver Jubilee, 1937 Coronation, 1938 set of twelve to 5r., 1942 set of twelve to 5r. and 1946 Victory; unmounted mint. S.G. 86s-118s, £945 £300-400

SOUTH AFRICA

x319 ★ A general collection of mint issues in stockbook which includes 1913-24 5/- (2), Airmails, 1930-44 2/6d. pair, 1933-48 hyphenated values to 10/- pair (3), 1938 Centenary set, 1939 Landing set, 1941-46 War Effort, 1954 set to 10/-, later issues to 1969; Officials with 1935-49 hyphenated values to 5/- and 10/- (2), 1950-54 values to 5/- (3) and 10/- (2). Also New Republic £1 and Swaziland 1933 5/- and 10/-, 1938-54 set to 10/-, Q.E. sets to top value. Generally clean and fine, lightly mounted or unmounted mint £400-600

SOUTHERN NIGERIA



Ex 320

x320 ★ 1904-09 MCA set of twelve to £1 and 1907-11 MCA set of twelve to £1, part to large part original gum; chiefly good to fine. S.G. 21-44, £950 £200-300



The Royal Philatelic Society London

We are pleased to receive proposals for membership of the Society which is through election.
 If you are interested in membership, please contact us at secretary@rpsl.org.uk
 If you have no proposer or seconder, please contact us for further information.

Tel: 00 44 (0)20 7486 1044 | www.rpsl.org.uk

The world's oldest and most prestigious philatelic society, established 1869, with over 2,000 members in more than 70 countries.

Extensive premises in London's West End house the Society's superlative library, plus Museum and Archive, and provide first-class meeting facilities.

The Society's Online Catalogue provides access to over three-quarters of a million philatelic indexes to members world-wide.

A fascinating programme of displays and meetings throughout the year, supplemented by regional meetings and gatherings at major international events.

The Society publishes ten times a year its own journal, *The London Philatelist*, containing articles of outstanding philatelic research, in addition to publishing major philatelic works.

We are honoured to have Her Majesty Queen Elizabeth II as our Royal Patron

SOUTHERN RHODESIA

The 1932 Victoria Falls 3d. ‘Imperforate Horizontally’ Variety



322

x321 ★

1932 (1 May) Victoria Falls 3d. deep ultramarine vertical pair from the right of the sheet variety **imperforate horizontally**, with the unique Printer's Guide mark between the stamps (Rows 5 and 6); original lightly mounted gum, light horizontal gum crease between impressions. Fine and very rare with only twenty-two units existing in pairs, blocks of four and the block of six, this being unit 6 as identified in the Rhodesian Philatelist article (see footnote below). B.P.A. Certificate (2013). S.G. 30a

£8,000-10,000

Note: See 'Southern Rhodesia- the 1932 3d. Large Falls Imperforate between varieties' in The Rhodesian Philatelist, no. 35, August 2014, pp. 623-29 which reconstructs and positions almost every known piece of S.G. 30a. (a photocopy of the article is offered with this lot)

TANGANYIKA



322



Ex 323

- x322 ★ 1917-21 20r. black and purple on red and 50r. carmine and green, both with large part original gum. expert signatures on reverse and Toselli Certificate (2015) for 50r. S.G. 61 and 62, £1,075 £300-400
- x323 ★ 1922-24 Script set of fifteen to £1, chiefly lightly mounted mint; a few unmounted, the 5/- and 10/- marginal examples from the foot of the sheet with burelage and 1925 frame colours changed set of four. S.G. 74-92, £742 £200-300

TOBAGO



Ex 324



Ex 325

- x324 ★ 1878 CC £1 mauve unused without gum and 1880 CC ½d. to 1/- set of five, unused with part original gum (½d. no gum); the £1 a little soiled as mentioned on the R.P.S. Certificate (1963). S.G. 6, 8-12, £5,500+ £700-900
- x325 ★ 1879-96 mint selection on a Hagner page comprising 1879 CC set to 5/-, 1880 set to 1/-, 1883 2½d. on 6d. stone, 1882-84 set to 4d. yellow-green, 1885-96 set to 1/-, 1886-96 Surcharges and two unused postal stationery cards; the ½d. green and 1½d. brown; chiefly good, a couple with lightly soiled appearance but otherwise fine £400-600



326

- x326 ★ 1886 (Jan.) ½d. on 6d. stone, variety **surchARGE double**, very clear and distinct double print; large part original gum and fine. R.P.S. Certificate (1930). S.G. 27c, £3,750 £1,200-1,600

TOGO



327

x327 Δ

1914 (3 Oct.) ½d. on 3pf. brown, 1d. on 5pf. green, 10pf. carmine, 20pf. ultramarine and 25pf. black and red on yellow, each tied to piece of 'Bodecker & Meyer, Lome' envelope by 'LOME/TOGOGEBIET' c.d.s.; the 10pf. with a few short perfs, otherwise fine

£350-400



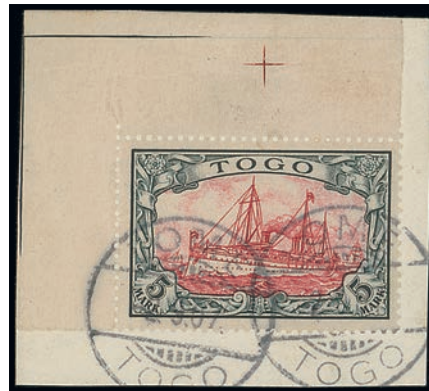
328

x328 ☒

1915 (20 May) envelope Registered to Basel, Switzerland bearing ½d. on 3pf. brown, 1d. on 5pf. green, 20pf. ultramarine (marginal from the lower right of the sheet with plate number), 25pf. black and red on yellow and 30pf. black and orange on buff each tied to cover by 'LOME/TOGOGEBIET' c.d.s., 'Lome (Togo)/No. 947' Registration label to face, transit and arrival marks to reverse

£300-400

Togo - *contd.*



329

x329 △ 1900 5m. carmine and black, marginal example from the upper left of the sheet with guideline, used and tied to piece by two strikes of 'LOME/TOGO/', fine and attractive. S.G. G19

£250-350

TONGA



330

x330 ★ 1897 7½d. black and green, variety **centred inverted**, part original toned gum, heavily mounted; otherwise an attractive example of this scarce variety. S.G. 48a, £9,000

£1,200-1,400

TRANSVAAL



331



332

x331 ★ 1900 (18 Jun.) 'v.r.i.' £5 deep green, very fresh example with large part original gum; very light mark just above the 'P' of the overprint not detracting from the fine appearance. R.P.S.L. Certificate (1988). S.G. 237, £2,000

£700-900

x332 ★ 1908 MCA £1 green and violet, large part original gum; tiny diagonal crease at lower right corner. Behr Certificate (2015). S.G. 272, £425

£80-100

TRINIDAD



333

x333

1847 *'Lady McLeod'* 5c. blue, a pen-cancelled example which has been cleaned to remove the ink and repainted and repaired to resemble an unused stamp; nevertheless rare and a presentable space filler. B.P.A. pink Certificate (1996). S.G. 1, £12,000

£1,000-1,500

Official Stamps



Ex 334

x334 ★

1894 CA set of seven to 5/-, part to large part original gum; some lightly toned perfs. S.G. O1-O7, £530+

£150-250

ZANZIBAR



335

x335 ○

1895-96 1a.6p. sepia, variety *'ZANZIDAR'* for *'ZANZIBAR'*, a used example with crisp double ring c.d.s., fine. Signed Sergio Sismondo. R.P.S. Certificate (1953) S.G. 5j, £1,200

£200-400

COLLECTIONS AND RANGES

x336 ★ A selection of sets, part sets and single stamps (mint unless stated otherwise) including Ascension 1922 set of nine, Bermuda 1921 Tercentenary set to 1/-, British Columbia 1871 perf. 14 50c. mauve used, Mauritius 1938-49 set to 10r., Nyasaland 1938-44 set to £1, Sarawak with 1888-97 set to \$1 (no 2c.), 1889-92 Surcharges, 1899-1908 set to \$1, 1918 set to £1 and 1932 set to \$1, Singapore 1948-52 with values to \$5 etc. £500-700

x337 A mint and used selection on cards including Brunei 1906-07 to \$1 on 8c. mint, Hong Kong with 1891 20c. on 30c. with additional Chinese characters (11 unused, including a pair and 4 used), North Borneo, Rhodesia, Trinidad and Tobago with 1879 to 1/- blue, 1880 with 4d. yellow-green and 6d. stone, 1882-84 CA 4d. yellow-green and 6d. stone etc. chiefly good to fine £800-1,000



Ex 338

x338 ★ A selection of mint sets and singles (20) from across the Empire including Aden 1937 Dhows to 10r., Bechuanaland 1932 set to 10/-, Cyprus 1904-10 MCA set to 45pi., 1912-15 MCA set to 45pi. and 1923 MCA 10/- green and red on pale yellow, Falkland Islands 1904-07 set to 5/-, Gibraltar 1910-11 2/- to 8/-, Kuwait 1923 15r. 'SERVICE', Malta 1922 10/- blue-black and 10/- black both with 'SELF-GOVERNMENT' overprint, Mauritius 1913-22 MCA set to 10r. with all shades, Northern Nigeria 1900 10/- green and brown etc. chiefly good to fine, part to large part original gum; some with a little toning. S.G. £8,500+ £2,000-4,000



Ex 339

x339

A selection of mint and used sets and single stamps from Brunei, Malaya, North Borneo and Sarawak including Brunei 1906 1c. black and purple with **line through B** unused, 1908-22 MCA \$5 carmine on green block of four, 1922 North Borneo Exhibition 50c. and \$1 blocks of four, Straits Settlements 1906-07 10c. brown and slate used with variety **no stop after 'Settlements'**, 3c. block of four lower right hand stamp with variety **line through B** mint, 4c. on 16c. used with variety **overprints in both brown-red and black**, 1917 4c.+2c. Red Cross, variety **no stop**, Federated Malay States 1900 set to \$25 each overprinted '**SPECIMEN**', 1900 50c. green and black block of four, 1900 \$1 green and pale green with **watermark inverted**, Johore 1891 2c. on 24c. green used with variety '**CENST**' for '**CENTS**', North Borneo 1902-12 Postage Due set to 24c., Sarawak 1942 Japanese Occupation \$4 used, with violet overprint, 1888-97 set to \$1 used; etc. chiefly good to fine

£2,000-4,000



Ex 340

x340

A mint and used British Empire collection on old Imperial pages including Bechuanaland 1885-87 with values to 1/- mint, 1888 5/- and £1 mint, British Honduras with 1903-07 with values to \$2 mint, 1913-21 to \$5 with plate number '**3**' mint and 1922-33 with values to \$5 mint, Canada including 1852-57 3d. (2) and 7½d. all used, a selection of imperforate plate proofs, 1897 Jubilee issue to 20c. in blocks of four and \$1 to \$4 single unused examples (the \$2 toned), Cape of Good Hope 1853-64 used Triangles including 1853 1d. brick-red, 1855 4d. blue with B.P.A. Cert. 1954 and 1858 1/- bright yellow-green, Cyprus with GB overprints to 6d. mint, 1882-86 set to 12pi. and 1892-94 set to 12pi., 1902-04 set to 45pi., 1923 MCA 10/- and 1924-28 MCA £1 all unused, Grenada with 1895-99 set to 1/-, 1902 CA and 1904 MCA sets to 10/-, 1908-11 MCA set to 5/- and 1913-22 MCA set to 10/- all unused; chiefly good to fine, condition a little mixed on some of the earlier material, high catalogue value

£2,000-4,000

Collections and Ranges - *contd.*



Ex 341

x341

A selection of mint and used sets and single stamps from across the British Empire including Bechuanaland 1932 set to 10/- mint, Bermuda with 1875 1d. on 2d. and 1d. on 3d. surcharges, British East Africa 1890 ½a. on 1d. deep purple mint and 1896-1901 set to 5r. used, British Solomon Islands, Brunei 1906 set to \$1 on 8c. mint, Cook Islands, Dominica 1923-33 set to £1 mint, Falkland Islands 1904-12 MCA set to 5/- mint, Fiji, K.U.T. with 1935-37 Script set to £1 and 1938 £1 both mint, Lagos, Malta 1886 CC 5/- rose block of four mint and 1922 Self Government set to 10/-, Nova Scotia 1860-63 1c. horizontal pair variety **imperforate vertically**, Southern Rhodesia, Samoa, Trinidad 1914 Red Cross labels block of four, Orange River Colony, Straits Settlements, Selangor and St. Lucia; chiefly good to fine, huge catalogue value

£2,000-4,000



Ex 342

x342

A selection of mint and used sets and single stamps from across the British Empire including Great Britain with 1880-83 3d. on 3d. lilac, 6d. on 6d. lilac unused and 1891 £1 green used, Antigua, Ascension with 1922 set of nine to 3/- mint and 1924-33 Script 2/- and 3/- mint, Bechuanaland with 1888 set to 10/- mint, British Guiana, Cayman Islands, Ceylon, Dominica with 1922-33 set to 5/- mint (2), Falkland Islands 1933 5/- mint, Grenada 1913-22 set to 10/-, K.U.T. 1922 set to £1 mint, Morocco Agencies, Northern Nigeria 1902 CA set to 10/- and 1910-11 set to 10/- each overprinted 'SPECIMEN', North Borneo, Sierra Leone, Transjordan 1933 set to 500m. mint, Virgin Islands etc. chiefly good to fine

£3,000-5,000



Ex 343

x343

A selection of mint and used single stamps and sets from across the Commonwealth including Great Britain with 1d. black on cover, Seahorses 2/6d. to 10/- mint, 1948 Silver Wedding £1 mint (5), Anguilla 1967 Independent Anguilla \$2.50 (defective), Antigua with 1908-17 to 5/- mint, Ascension 1922 to 2/-, Barbados, Bechuanaland Protectorate overprints, Bermuda, British Guiana, Dominica, Falkland Islands with 1933 Centenary to 2/6d. and Dependencies 1954-62 set to £1, Gold Coast with 1889-94 20/- mauve and black on red, 1902 set to 20/- and 1904-06 set to 2/6d., South Africa, Zululand with 1888 overprint set to 1/- etc. condition mixed in places but plenty good to fine

£3,000-5,000



Ex 344

x344

A group of mainly mint sets and single stamps from across the Commonwealth (33) including Ascension 1924-33 set to 3/-, Bahamas, Bermuda, Brunei, Ceylon with 1912 MCA 50r., Cyprus, Falkland Islands with 1904-12 to 3/- and 1938-50 to £1, Fiji with 1903 \$1, Jamaica, Lagos with 1884 5/- blue (R.P.S. Cert) and 1904 set to 10/- overprinted 'SPECIMEN', Nevis 1879 1/- yellow-green (Brandon Cert.), North Borneo 1904-05 4c. on 6c. and 4c. on 8c. both with **surcharge inverted**, Nyasaland, Seychelles 1890-1900 set to 2r.25, Transvaal 1904-09 set to £1 etc; chiefly good to fine

£3,000-5,000

Collections and Ranges - *contd.*



Ex 345

x345 ★

1860-90 valuable chiefly mint B.W.I. collection on album pages with Antigua including 1862 6d., 1863-67 1d. and 6d., Montserrat, Bahamas with 1862 6d. lilac used with Brandon Cert., 1882 4d. rose with B.P.A. Cert, 1863-80 CC 1/- green, 1884-90 CA set to £1, Barbados including 1852-55 values to 4d., 1858 6d. and 1/- used, 1873 5/- dull rose, 1878 1d. on half 5/- used with Brandon Cert., 1882-86 CA set to 5/-, Bermuda with 1865-1903 CC set to 1/-, 1874 3d. on 1/- used with B.P.A. Cert, 1875 'ONE PENNY' surcharges, British Guiana including 1860 4c. blue used with Philatelic Foundation Cert., a range of other useful Ship types with values to 96c., British Honduras with a good range of the first issue and surcharges, Dominica with 1874 CC 1d., 6d. and 1/-, 1882 ½d. on half 1d. with **surcharge inverted** used with Brandon Cert, Revenue overprints etc., Grenada including a nice range of Chalons, Jamaica, Leeward Islands, Nevis with a variety of Spring types with values to 1/-, St. Christopher including 1870 CC to 6d. and 1882 CA to 1/-, St. Lucia with 1860 1d. and 4d., 1863 CC 1d. to 6d., 1883-86 set of six to 1/- and 1891-98 set to 10/-, St. Vincent, Tobago, Trinidad, Turks Islands with 1881 2½d. on 6d. grey-black with Sismondo Cert and Virgin Islands with 1866 1d. and 6d., 1867-70 with values to 1/- and 1888 4d. on 1/- etc.; a fine collection with huge catalogue value, chiefly good to fine condition

£5,000-7,000

END OF THE SALE

SPINK

WHERE HISTORY IS VALUED

STAMPS AND COVERS OF SOUTH EAST ASIA

16 JULY 2020 | LONDON | 69 SOUTHAMPTON ROW



For further information please contact

Nick Startup | +44(0)20 7563 4073 | nstartup@spink.com

SPINK LONDON | 69 Southampton Row | WC1B 4ET | United Kingdom



WWW.SPINK.COM #SPINK_AUCTIONS

LONDON | NEW YORK | HONG KONG | SINGAPORE | SWITZERLAND

SPINK

WHERE HISTORY IS VALUED

THE PHILATELIC COLLECTORS' SERIES SALE

13-14 JULY 2020 | LONDON | 69 SOUTHAMPTON ROW



For further information please contact
Iain Murphy | +44(0)20 7563 4060 | imurphy@spink.com

SPINK LONDON | 69 Southampton Row | WC1B 4ET | United Kingdom

WWW.SPINK.COM



#SPINK_AUCTIONS

SPINK

LONDON
1666

WRITTEN BIDS FORM

This form should be sent or faxed to the Spink auction office in advance of the sale. References for new clients should be supplied in good time to be taken up before the sale. Bids received later than one hour before the start of the sale may not be processed.

to be updated

NAME _____

ADDRESS _____

POSTCODE _____

Sale Venue:

69 Southampton Row, Bloomsbury,
London WC1B 4ET
tel: +44 (0)20 7563 4108/4005
fax: +44 (0)20 7563 4037
email: auctionteam@spink.com

YOU CAN ALSO BID IN REAL TIME ON SPINK LIVE.
PLEASE DOWNLOAD SPINK LIVE APP FROM THE
APP STORE OR VISIT WWW.SPINK.COM,
REGISTER AND LOG INTO THE SALE.

SALE TITLE

DATE

CODE NAME

SALE NO.

**The 'Lionheart' Collection of Great Britain and
British Empire - Part XII**

**Wednesday 15 July 2020
at 2.00 p.m.**

LIONHEART

2012

I request Spink, without legal obligations of any kind on its part, to bid on the following Lots up to the price given below. I understand that if my bid is successful the Purchase Price will be the sum of the final bid and Buyer's Premium as a percentage of the final bid, any VAT chargeable, also postage charge and a fee for paying by card. The Rate of Buyer's Premium is 20% of the final hammer price of each lot. I understand Spink will pursue me for payment for any successful bid. In addition, I understand and consent that Spink may share my personal details relating to the default with other auction houses and live bidding platforms to protect themselves from such defaults.

All bids shall be treated as offers made on the Terms and Conditions for Buyers printed in the catalogue. I also understand that Spink provides the service of executing bids on behalf of clients for the convenience of clients and that Spink will not be held responsible for failing to execute bids. If identical commission bids are received for the same Lot, the commission bid received first by Spink will take precedence. Please note that you will not be notified if there are higher written bids received.

BIDDERS PLEASE NOTE OUR EXTENSION CLAUSES IN OUR TERMS AND CONDITIONS FOR BUYERS PLEASE PRINT CLEARLY IN BLOCK LETTERS AND ENSURE THAT BIDS ARE IN STERLING

Lot Number (in numerical order)	Price Bid £ (excluding Buyer's Premium)

Lot Number (in numerical order)	Price Bid £ (excluding Buyer's Premium)

Lot Number (in numerical order)	Price Bid £ (excluding Buyer's Premium)

Please hold my purchased lots for collection

TEL. HOME _____ TEL. OFFICE _____

FAX _____ E-MAIL _____

SIGNATURE _____ VAT NUMBER _____

I agree to receive notifications about Spink auctions, news and events via email and direct mail

I agree to receive marketing notifications related only to the following categories (*please select as appropriate*)
Autographs / Banknotes / Bonds & Shares / Books / Coins / Comics / Handbags / Jewellery / Maps / Medals / Stamps / Watches / Whiskies & Spirits / Wine / Corporate News & Events

We will use the personal information you provide to us as set out in our privacy notice available at www.spink.com/privacy-policy

Continued ...

LONDON | NEW YORK | HONG KONG | SINGAPORE | SWITZERLAND

ESSAYS, PROOFS AND STAMPS OF MALAYSIA AND SINGAPORE E-AUCTION



8 July - 22 July 2020
London



STAMPS AND COVERS OF SOUTH EAST ASIA

16 July 2020 | London | 69 Southampton Row



For further information please contact
Nick Startup | +44(0)20 7563 4073 | nstartup@spink.com
SPINK LONDON | 69 Southampton Row | WC1B 4ET | United Kingdom

WWW.SPINK.COM



#SPINK_AUCTIONS

TERMS AND CONDITIONS FOR BUYERS

These conditions set out the terms on which we (**Spink and Son Limited** of 69 Southampton Row, Bloomsbury London WC1B 4ET (company no. 04369748)) contract with you (**Buyer**) either as agent on behalf of the Seller or as principal if we are the Seller. You should read these conditions carefully.

1 DEFINITIONS

The following definitions apply in these conditions:

Auctioneers' Margin Scheme	means a VAT margin scheme as defined by HM Revenue & Customs;
Buyer's Premium	means the charge payable by you as a percentage of the Hammer Price, at the rates set out in clause 5.1 below;
Certificate of Authenticity	means a certificate issued by an Expert Committee confirming the authenticity of a Lot;
Expert Committee	means a committee of experts to whom a Lot may be sent for an extension in accordance with clause 3.4.3;
Forgery	means a Lot constituting an imitation originally conceived and executed as a whole with a fraudulent intention to deceive as to authorship, origin, age, period, culture or source where the correct description as to such matters is not reflected by the description in the catalogue and which at the date of the auction had a value materially less than it would have had if it had been in accordance with the description in the catalogue. Accordingly, no Lot shall be capable of being a Forgery by reason of any damage and/or restoration work of any kind (including re-enamelling);
Hammer Price	means the amount of the highest bid accepted by the auctioneer in relation to a Lot;
Lot	means any item deposited with us for sale at auction and, in particular, the item or items described against any Lot number in any catalogue;
Reserve	the amount below which we agree with the Seller that the Lot cannot be sold;
Seller	means the owner of the Lot being sold by us;
Spink Group	Spink and Son Limited, our subsidiaries and associated companies.
VAT	value added tax chargeable under VAT and any similar replacement or additional tax; and
VAT Symbols	means the symbols detailing the VAT status of the Lot details of which are set out at the back of the catalogue.

2 SPINK'S ROLE AS AGENT

- 2.1 All sales undertaken by us either at auction or privately are undertaken either as agent on behalf of the Seller or from time to time, as principal if we are the owner of the Lot. Please note that even if we are acting as agent on behalf of the Seller rather than as principal, we may have a financial interest in the Lot.
- 2.2 The contract for the sale of the Lot will be between you and the Seller.
- 2.3 The Seller's sale of the Lot to you is subject to any terms and conditions, disclaimers or exclusions included with any promotional material or catalogue descriptions for the Lot, or otherwise notified to you by the Seller or us on their behalf.

3.4.3 If we accept a request for an expert opinion or Certificate of Authenticity we will submit the Lot to the Expert Committee. You acknowledge and accept that the length of time taken by an Expert Committee to reach an opinion will vary depending on the circumstances and in any event is beyond our control.

3.4.4 We will not accept a request for an extension on account of condition. Any Lot described in the catalogue as having faults or defects may not be returned even if an expert opinion or Certificate of Authenticity cites other faults or defects not included in the catalogue description, other than in the case of a Forgery.

3.4.5 Should Spink accept a request for an extension under the foregoing provisions of this paragraph, the fact may be stated by the Auctioneer from the rostrum prior to the sale of the Lot.

3.4.6 It should be noted that any stamp accompanied by a Certificate of Authenticity is sold on the basis of that Certificate only and not on the basis of any other description or warranty as to authenticity. No request for an extension will be accepted on such a stamp and the return of such a stamp will not be accepted.

3.4.7 If you receive any correspondence from the Expert Committee in relation to the Lot, including but not limited to a Certificate of Authenticity, you must provide us with copies of such correspondence no later than 7 days after you receive such correspondence.

3 BEFORE THE SALE

3.1 Examination of goods

You are strongly advised to examine personally any goods in which you are interested, before the auction takes place. Condition reports are usually available on request. We provide no guarantee to you other than in relation to Forgeries, as set out in clause 5.13 of these Terms and Conditions.

3.2 Catalogue descriptions

3.2.1 Statements by us in the catalogue or condition report, or made orally or in writing elsewhere, regarding the authorship, origin, date, age, size, medium, attribution, genuineness, provenance, condition or estimated selling price of any Lot are merely statements of opinion, and are not to be relied on as statements of definitive fact. Catalogue and web illustrations are for guidance only, and should not be relied on either to determine the tone or colour of any item. No lot shall be rejected on the grounds of inaccurate reproduction. No lot illustrated in the catalogue and online shall be rejected on the grounds of cancellation, centring, margins, perforation or other characteristics apparent from the illustration. Estimates of the selling price should not be relied on as a statement that this price is either the price at which the Lot will sell or its value for any other purpose.

3.2.2 Many items are of an age or nature which precludes their being in perfect condition and some descriptions in the catalogue or given by way of condition report make reference to damage and/or restoration. We provide this information for guidance only and the absence of such a reference does not imply that an item is free from defects or restoration nor does a reference to particular defects imply the absence of any others.

3.2.3 Other than as set out in clause 5.13, and in the absence of fraud, neither the Seller nor we, nor any of our employees or agents, are responsible for the correctness of any statement as to the authorship, origin, date, age, attribution, genuineness or provenance of any Lot nor for any other errors of description or for any faults or defects in any Lot. Every person interested should exercise and rely on his own judgment as to such matters.

3.3 Your Responsibility

You are responsible for satisfying yourself as to the condition of the goods and the matters referred to in the catalogue description.

3.4 Extensions – Stamps only

3.4.1 If you wish to obtain an expert opinion or Certificate of Authenticity on any Lot (other than a mixed Lot or Lot containing undescribed stamps) you must notify us in writing not less than forty-eight hours before the time fixed for the commencement of the first session of the sale. If accepted by us, such request shall have the same effect as notice of an intention to question the genuineness or description of the Lot for the purposes of clause 5.13 (Refund in the case of Forgery) of these Terms and Conditions and the provisions of clause 5.13 (Refund in the case of Forgery) shall apply accordingly.

3.4.2 Notice of a request for an expert opinion or Certificate of Authenticity must give the reason why such opinion is required and specify the identity of your proposed expert which will be subject to agreement by us. We reserve the right, at our discretion, to refuse a request for an expert opinion or Certificate of Authenticity including (without limitation) where the proposed expert is not known to us.

4 AT THE SALE

4.1 Refusal of admission

Our sales usually take place on our own premises or premises over which we have control for the sale, and we have the right, exercisable at our complete discretion, to refuse admission to the premises or attendance at an auction.

4.2 Registration before bidding

All bidders must be registered either by completing a registration form or creating an account online. Please be aware that we usually require buyers to present identification before making a bid at auction, undergo a credit check or provide a trade reference.

If you have not bid successfully with Spink in the past, or you are registering with us for the first time, we reserve the right to require a deposit of up to 50% of the amount you intend to spend. Such deposit will be deducted from your invoice should you be successful. If you are unsuccessful at auction, your deposit will be returned by the same means it was paid to Spink.

Some lots may be designated, prior to the auction, as "Premium Lots", which means a deposit may be required before placing a bid on the item for sale. Information will be posted on our website in such an event.

4.3 Bidding as Principal

When making a bid (whether such bids are made in person or by way of telephone bids operated by Spink, commission or online or email bids), you will be deemed to be acting as principal and will be accepting personal liability, unless it has been agreed in writing, at the time of registration, that you are acting as agent on behalf of a third party buyer acceptable to us.

4.4 Commission Bids

If you give us instructions to bid on your behalf, by using the form provided in our catalogues or via our website, we shall use reasonable endeavours to do so, provided these instructions are received not later than 24 hours before the auction. If we receive commission bids on a particular Lot for identical amounts, and at auction these bids are the highest bids for the Lot, it will be sold to the person whose bid was received first. Commission bids are undertaken subject to other commitments at the time of the sale, and the conduct of the auction may be such that we are unable to bid as requested. Since this is undertaken as a free service to prospective buyers on the terms stated, we cannot accept liability for failure to make a commission bid. You should therefore always attend personally if you wish to be certain of bidding.

- 4.5 **On-line Bidding**
We offer internet services as a convenience to our clients. We will not be responsible for errors or failures to execute bids placed on the internet, including, without limitation, errors or failures caused by (i) a loss of internet connection by either party for whatever reason; (ii) a breakdown or problems with the online bidding software and/or (iii) a breakdown or problems with your internet connection, computer or system. Execution of on-line internet bids on www.spink.com and Spink Live is a free service undertaken subject to other commitments at the time of the auction and we do not accept liability for failing to execute an online internet bid or for errors or omissions in connection with this activity.
- 4.6 **Telephone Bids**
If you make arrangements with us not less than 24 hours before the sale, we shall use reasonable endeavours to contact you to enable you to participate in bidding by telephone, but in no circumstances will we be liable to either the Seller or you as a result of failure to do so.
- 4.7 **Currency Converter**
At some auctions, a currency converter will be operated, based on the one month forward rates of exchange quoted to us by Barclays Bank Plc or any other appropriate rate determined by us, at opening on the date of the auction. Bidding will take place in a currency determined by us, which is usually sterling for auctions held in London. The currency converter is not always reliable, and errors may occur beyond our control either in the accuracy of the Lot number displayed on the converter, or the foreign currency equivalent of sterling bids. We shall not be liable to you for any loss suffered as a result of you following the currency converter.
- 4.8 **Video images**
At some auctions there will be a video screen. Mistakes may occur in its operation, and we cannot be liable to you regarding either the correspondence of the image to the Lot being sold or the quality of the image as a reproduction of the original.
- 4.9 **Bidding Increments**
Bidding generally opens below the low estimate and advances in the following order although the auctioneer may vary the bidding increments during the course of the auction. The normal bidding increments are:
- | | |
|--------------------|----------------------------------|
| Up to £100 | by £5 |
| £100 to £300 | by £10 |
| £300 to £600 | £320-£350-£380-£400 etc. |
| £600 to £1,000 | by £50 |
| £1,000 to £3,000 | by £100 |
| £3,000 to £6,000 | £3,200-£3,500-£3,800-£4,000 etc. |
| £6,000 to £10,000 | by £500 |
| £10,000 to £20,000 | by £1,000 |
| £20,000 and up | Auctioneer's discretion |
- 4.10 **Bidding by Spink**
4.10.1 We reserve the right to bid on Lots on the Seller's behalf up to the amount of the Reserve (if any), which will never be above the low estimate printed in the auction catalogue.
4.10.2 The Spink Group reserves the right to bid on and purchase Lots as principal.
4.10.3 Lots with this symbol (Ⓢ) indicate that a party has provided Spink with an irrevocable bid on the lot that will be executed during the sale at a value that ensures that the lot will sell. The irrevocable bidder, who may bid in excess of the irrevocable bid, will be compensated based on his bid in the event he or she is not the successful bidder or may receive a fixed fee in the event he or she is the successful bidder. If the irrevocable bidder is the successful bidder, the fixed fee for providing the irrevocable bid may be netted against the irrevocable bidder's obligation to pay the full purchase price for the lot. If the irrevocable bid is not secured until after the printing of the auction catalogue, a pre-sale announcement will be made indicating that there is an irrevocable bid on the lot.
If you are interested in placing an irrevocable bid in an auction, please contact us at chairmanoffice@spink.com. Typically, only some of the lots with an estimate, which must exceed £100,000 or equivalent in other currencies are open to irrevocable bids.
- 4.11 **The Auctioneer's Discretion**
The auctioneer has the right at his absolute discretion to refuse any bid to advance the bidding in such manner as he may decide to withdraw or divide any Lot, to combine any two or more Lots and, in the case of error or dispute, to put an item up for bidding again.
- 4.12 **Successful Bid**
Subject to the auctioneer's discretion, the striking of his hammer marks the acceptance of the highest bid, provided always that such bid is higher than the Reserve (where applicable), and the conclusion of a contract for sale between you and the Seller.
- 4.13 **After Sale Arrangements**
If you enter into any private sale agreements for any Lot with the Seller within 60 days of the auction, we, as exclusive agents of the Seller reserve the right to charge you the applicable Buyer's Premium in accordance with these Terms and Conditions, and the Seller a commission in accordance with the terms of the Seller's agreement.
- 4.14 **Return of Lot**
4.14.1 Once your bid has been accepted for a Lot then you are liable to pay for that Lot in accordance with these Terms and Conditions. If there are any problems with a Lot then you must notify us within 7 days of receipt of the Lot, specifying the nature of the problem. We may then request that the Lot is returned to us for inspection. Save as set out in clause 5.13, the cancellation of the sale of any Lot and the refund of the corresponding purchase price is entirely at our sole discretion. We will not normally exercise that discretion if the Lot is not received by us in the same condition that it was in at the auction date.
- 4.14.2 No lot may be returned on account of condition if the condition was stated by a third party grading company (including, but not limited to PCGS, NGC, ANACS, ICG, PMG, WBG, Legacy Currency Grading).
- 5 **AFTER THE AUCTION**
- 5.1 **Buyer's Premium and other charges**
In addition to the Hammer Price, you must pay us the Buyer's Premium at a rate of 20% of the final Hammer price of each lot, postage charge and a fee for paying by card.
- 5.2 **Value Added Tax**
Other than in respect of Zero-rated Lots (o) VAT is chargeable on the Hammer price and the Buyer's Premium of daggered (†) and (Ω) lots at the standard rate (currently 20%), and on lots marked (x) at the reduced rate (currently 5% on the Hammer price and 20% on the Buyer's premium). VAT on Margin scheme lots (identified by the absence of any VAT symbol next to the lot number) is payable at 20% on the Buyer's premium only.
- 5.3 **VAT Refunds**
General
5.3.1 As we remain liable to account for VAT on all Lots unless they have been exported outside the EU within 3 months of the date of sale, you will generally be asked to deposit all amounts of VAT invoiced. However, if a Spink nominated shipper is instructed, then any refundable VAT will not be collected. In all other cases credits will be made when proof of export is provided. If you export the Lot yourself you must obtain shipping documents from the Shipping Department for which a charge of £50 will be made.
5.3.2 If you export the Lot you must return the valid proof of export certificate to us within 3 months of the date of sale. If you fail to return the proof of export certificate to us within such period and you have not already accounted to us for the VAT, you will be liable to us for the full amount of the VAT due on such Lot and we shall be entitled to invoice you for this sum.
5.3.3 To apply for a refund of any VAT paid, the proof of export certificate must be sent to our Shipping Department clearly marked 'VAT Refund' within 3 months of the date of sale. No payment will be made where the total amount of VAT refundable is less than £50 and Spink will charge £50 for each refund processed.
VAT Refunds - Buyers from within the EU
5.3.4 VAT refunds are available on the Hammer Price and Buyer's Premium of Daggered (†) and Investment Gold (g) Lots. You must certify that you are registered for VAT in another EU country and that the Lot is to be removed from the United Kingdom within 3 months of the date of sale.
5.3.5 Where an EU buyer purchases a Lot on which import VAT has been charged, no refund of VAT is available from us. It may be possible to apply directly for a refund on form VAT 65 to HM Revenue & Customs Overseas Repayment Section, Londonderry.
VAT Refunds - Buyers from outside the EU
5.3.6 Where a Lot is included within the Auctioneers' Margin Scheme and evidence of export from the EU is produced within 3 months of the date of sale, the VAT on Buyer's Premium may be refunded.
5.3.7 Where the Lot is marked as a Daggered (†) Lot the VAT charged on the Hammer Price may be refunded where evidence of export from the EU is produced within 3 months of the date of sale. A refund of VAT charged on the Buyer's Premium can also be made on receipt of proof of business as a collectibles dealer.
5.3.8 Where the Lot is marked as an Omega (Ω) Lot or an Import VAT (x) Lot and evidence of export from the EU is produced within 3 months of the date of sale, the VAT charged on both the Hammer Price and Buyer's Premium may be refunded. Where required, we can advise you on how to export such Lots as a specific form of export evidence is required. Where we advise you on the export of the Lots, please be aware that the ultimate responsibility in respect of obtaining a valid proof of export certificate will lie with you and we will not be responsible for your failure to obtain such certificate.
5.3.9 Lot marked as Investment Gold (g) is exempt from VAT on Hammer price. A refund of VAT charged on the Buyer's Premium can be made on receipt of proof of business as a collectibles dealer and where evidence of export from the EU is produced within 3 months of the date of sale.
- 5.4 **Payment**
5.4.1 You must provide us with your full name and permanent address and, if so requested, details of the bank from which any payments to us will be made. You must pay the full amount due (comprising the Hammer Price, the Buyer's Premium and any applicable VAT) within seven days after the date of the sale. This applies even if you wish to export the Lot and an export licence is (or may be) required.
5.4.2 You will not acquire title to the Lot until all amounts due have been paid in full. This includes instances where special arrangements were made for release of Lot prior to full settlement.
5.4.3 Payment should be made in sterling by one of the following methods:
(i) Direct bank transfer to our account details of which are set out on the invoice. All bank charges shall be met by you. Please ensure that your client number is noted on the transfer.
(ii) By cheque or bank draft made payable to Spink and Son Ltd and sent to Spink at 69 Southampton Row, Bloomsbury, London WC1B 4ET. Please note that the processing charges for payments made by cheques or bank drafts drawn on a non-U.K bank shall be met by you. Please ensure that the remittance slip printed at the bottom of the invoice is enclosed with your payment.

- (iii) By Visa or Mastercard. All Corporate cards regardless of origin and Consumer debit and credit cards issued outside the EU are subject to a fee of 3%. For all card payments there are limits to the amounts we will accept depending on the type of card being used and whether or not the cardholder is present.
- 5.4.4 Payments should be made by the registered buyer and not by third parties, unless it has been agreed at the time of registration that you are acting as an agent on behalf of a third party.
- 5.5 Invoices**
Invoices may consist of one or more pages and will show: Zero rated Lots (o); no symbol Lots sold under the Auctioneers' Margin Scheme; Lots marked (g) special scheme Investment Gold; Daggered Lots (†), imported Lots marked (x) and (Ω), (c) Lots with Zero rated hammer for EU VAT registered buyers.
- 5.6 Collection of Purchases**
5.6.1 Unless specifically agreed to the contrary, we shall retain lots purchased until all amounts due to us, or to the Spink Group, have been paid in full. Buyers will be required to pay for their lots when they wish to take possession of the same, which must be within 7 days of the date of the sale, unless prior arrangements have been made with Spink. Without prior agreement, lots will not be released until cleared funds are received with regard to payments made by cheque.
5.6.2 Unless we notify you to the contrary, items retained by us will be covered in accordance with our policy which is available for inspection at our offices from the date of sale for a period of seven days or until the time of collection, whichever is sooner. After seven days or from the time of collection, whichever is the earlier, the Lot will be entirely at your risk.
5.6.3 Our policy will not cover and we are unable to accept responsibility for damage caused by woodworm, changes in atmospheric conditions or acts of terrorism.
- 5.7 Notification**
We are not able to notify successful bidders by telephone. While Invoices are sent out by email or mail after the auction we do not accept responsibility for notifying you of the result of your bid. You are requested to contact us by telephone or in person as soon as possible after the auction to obtain details of the outcome of your bids to avoid incurring charges for late payment.
- 5.8 Packing and handling**
5.8.1 We shall use all reasonable endeavours to take care when handling and packing a purchased Lot but remind you that after seven days or from the time of collection, whichever is sooner, the Lot is entirely at your risk. Our postage charges are set out at the back of the catalogue.
5.8.2 It is the responsibility of the Buyer to be aware of any Import Duties that may be incurred upon importation to the final destination. Spink will not accept return of any package in order to avoid these duties. The onus is also on the Buyer to be aware of any Customs import restrictions that prohibit the importation of certain collectibles. Spink will not accept return of the Lot(s) under these circumstances. Spink will not accept responsibility for Lot(s) seized or destroyed by Customs.
5.8.3 If the Buyer requires delivery of the Lot to an address other than the invoice address this will be carried out at the discretion of Spink.
- 5.9 Recommended packers and shippers**
If required our shipping department may arrange shipment as your agent. Although we may suggest carriers if specifically requested, our suggestions are made on the basis of our general experience of such parties in the past and we are not responsible to any person to whom we have made a recommendation for the acts or omissions of the third parties concerned.
- 5.10 Remedies for non-payment or failure to collect purchases**
5.10.1 If you fail to make payment within seven days of your stipulated payment date set out in your invoice, we shall be entitled to exercise one or more of the following rights or remedies:
5.10.1.1 to charge interest at the rate of 2% per month compound interest, calculated on a daily basis, from the date the full amount is due;
5.10.1.2 to set off against any amounts which the Spink Group may owe you in any other transaction the outstanding amount remaining unpaid by you;
5.10.1.3 we may keep hold of all or some of your Lots or other property in the possession of the Spink Group until you have paid all the amounts you owe us or the Spink Group, even if the unpaid amounts do not relate to those Lots or other property. Following fourteen days' notice to you of the amount outstanding and remaining unpaid, the Spink Group shall have the right to arrange the sale of such Lots or other property. We shall apply the proceeds in discharge of the amount outstanding to us or the Spink Group, and pay any balance to you;
5.10.1.4 where several amounts are owed by you to the Spink Group in respect of different transactions, to apply any amount paid to discharge any amount owed in respect of any particular transaction, whether or not you so direct;
5.10.1.5 to reject at any future auction any bids made by you or on your behalf or obtain a deposit from you before accepting any bids.
5.10.2 If you fail to make payment within thirty-five days, we shall in addition be entitled:
5.10.2.1 to cancel the sale of the Lot or any other item sold to you at the same or any other auction;
5.10.2.2 to arrange a resale of the Lot, publicly or privately, and, if this results in a lower price being obtained, claim the balance from you together with all reasonable costs including a 20% seller's commission, expenses, damages, legal fees, commissions and premiums of whatever kind associated with both sales or otherwise, incurred in connection with your failure to make payment;
5.10.2.3 when reselling the Lot, place a notice in our catalogue stating that you successfully purchased the Lot at auction but have subsequently failed to pay the Hammer Price of the Lot; or
5.10.2.4 take any other appropriate action as we deem fit.
5.10.3 If you fail to collect within fourteen days after the sale, whether or not payment has been made, you will be required
5.10.3.1 to pay a storage charge of £2 per item per day plus any additional handling cost that may apply.
5.10.3.2 you will not be entitled to collect the Lot until all outstanding charges are met, together with payment of all other amounts due to us.
- 5.11 Use of Default Information**
If you fail to make payment for a Lot in accordance with these Terms and Conditions:
5.11.1 we reserve the right to refuse you the right to make bids for any future auction irrespective of whether previous defaults have been settled; and
5.11.2 you acknowledge that we may (as necessary for our legitimate interests those of other auctioneers and live bidding platforms in referencing customers and avoiding customer defaults) disclose details of such default to other auctioneers and live bidding platforms, which will include your name, address, nature of the default and the date of the default.
Auctioneers or live bidding platforms who receive details of the default may rely on such information when deciding whether to enter into a transaction with you in the future.
- 5.12 Export Licence**
5.12.1 If required we can, at our discretion, advise you on the detailed provisions of the export licensing regulations. Where we advise you in relation to export licensing regulations the ultimate responsibility in respect of any export will lie with you and we will not be responsible for your failure to apply for any necessary licences.
5.12.2 If the Lot is going to be hand carried by you, you may be required to produce a valid export licence to us or sign a waiver document stating that a licence will be applied for.
5.12.3 You should always check whether an export licence is required before exporting. Export licences are usually obtained within two or three weeks but delays can occur.
5.12.4 Unless otherwise agreed by us in writing, the fact that you wish to apply for an export licence does not affect your obligation to make payment within seven days nor our right to charge interest on late payment.
5.12.5 If you request that we apply for an export licence on your behalf, we shall be entitled to recover from you our disbursements and out of pocket expenses in relation to such application, together with any relevant VAT.
5.12.6 We will not be obliged to rescind a sale nor to refund any interest or other expenses incurred by you where payment is made by you despite the fact that an export licence is required.
- 5.13 Refund in the case of Forgery**
5.13.1 A sale will be cancelled, and the amount paid refunded to you if a Lot (other than a miscellaneous item not described in the catalogue) sold by us proves to have been a Forgery. We shall not however be obliged to refund any amounts if either (a) the catalogue description or saleroom notice at the auction date corresponded to the generally accepted opinion of scholars or experts at that time, or fairly indicated that there was a conflict of opinions, or (b) it can be demonstrated that the Lot is a Forgery only by means of either a scientific process not generally accepted for use until after publication of the catalogue or a process which at the date of the auction was unreasonably expensive or impracticable or likely to have caused damage to the Lot. Furthermore, you should note that this refund can be obtained only if the following conditions are met:
5.13.1.1 you must notify us in writing, within seven days of the receipt of the Lot(s), that in your view the Lot concerned is a Forgery;
5.13.1.2 you must then return the item to us within fourteen days from receipt of the Lot(s), in the same condition as at the auction date; and
5.13.1.3 as soon as possible following return of the Lot, you must produce evidence satisfactory to us that the Lot is a Forgery and that you are able to transfer good title to us, free from any third party claims.
5.13.1.4 you must provide to us all evidence obtained by you that a Lot is a Forgery no later than 7 days after you receive such evidence.
5.13.2 In no circumstances shall we be required to pay you any more than the amount paid by you for the Lot concerned and you shall have no claim for interest.
5.13.3 The benefit of this guarantee is not capable of being transferred, and is solely for the benefit of the person to whom the original invoice was made out by us in respect of the Lot when sold and who, since the sale, has remained the owner of the Lot without disposing of any interest in it to any third party.
5.13.4 We shall be entitled to rely on any scientific or other process to establish that the Lot is not a Forgery, whether or not such process was used or in use at the date of the auction.

6 LIABILITY

Nothing in these Terms and Conditions limits or excludes our liability for:

- 6.1 death or personal injury resulting from negligence; or
- 6.2 any damage or liability incurred by you as a result of our fraud or fraudulent misrepresentation.

7 USE OF YOUR PERSONAL INFORMATION

7.1 We will use the personal information you provide to us as set out in our privacy notice (available at <https://spink.com/privacy-policy>) and in particular to:

- 7.1.1 process the bids you make on Lots (whether successful or otherwise) and other auction related services we provide;
- 7.1.2 process your payment relating to a successful purchase of a Lot;
- 7.1.3 arrange for delivery of any Lot you purchase, which will include passing your details to shipping providers and, on overseas deliveries, to customs where they make enquiries regarding the Lot;
- 7.1.4 inform you about similar products or services that we provide, but you may stop receiving these at any time by contacting us.

7.2 In accordance with clause 4.2, we may pass your information to credit reference agencies in order to obtain credit checks from them, and they may keep a record of any search that they do.

7.3 In accordance with clause 5.11, where you default on making payment for a Lot in accordance with these terms and conditions we may disclose details of such default to other auctioneers and live bidding platforms.

7.4 We are also working closely with third parties (including, for example, other auctioneers and live bidding platforms) and may receive information about you from them.

7.5 Where you provide us with personal information about other individuals, you must ensure that your provision of that information is compliant with applicable data protection law.

8 COPYRIGHT

8.1 We shall have the right (on a non-exclusive basis) to photograph, video or otherwise produce an image of the Lot. All rights in such an image will belong to us, and we shall have the right to use it in whatever way we see fit.

8.2 The copyright in all images, illustrations and written material relating to a Lot is and shall remain at all times our property and we shall have the right to use it in whatever way we see fit. You shall not use or allow anyone else to use such images, illustrations or written material without our prior written consent.

9 VAT

You shall give us all relevant information about your VAT status and that of the Lot to ensure that the correct information is printed in the catalogues. Once printed, the information cannot be changed. If we incur any unforeseen cost or expense as a result of the information being incorrect, you will reimburse to us on demand the full amount incurred.

10 NOTICES

All notices given under these Terms and Conditions may be served personally, sent by 1st class post, or faxed to the address given to the sender by the other party. Any notice sent by post will be deemed to have been received on the second working day after posting or, if the addressee is overseas, on the fifth working day after posting. Any notice sent by fax or served personally will be deemed to be delivered on the first working day following despatch.

11 ADDITIONAL PROVISIONS

The following provisions of this clause 11 shall apply only if you are acting for the purposes of your business.

11.1 Limitation of Liability

Subject to clause 6, we shall not be liable, whether in tort (including for negligence) or breach of statutory duty, contract, misrepresentation or otherwise for any:

- 11.1.1 loss of profits, loss of business, depletion of goodwill and/or similar losses, loss of anticipated savings, loss of goods, loss of contract, loss of use, loss of corruption of data or information; or
- 11.1.2 any special, indirect, consequential or pure economic loss, costs, damages, charges or expenses.

11.2 Severability

If any part of these Terms and Condition is found by any court to be invalid, illegal or unenforceable, that part may be discounted and the rest of the conditions shall continue to be valid and enforceable to the fullest extent permitted by law.

11.3 Force majeure

We shall have no liability to you if we are prevented from, or delayed in performing, our obligations under these Terms and Conditions or from carrying on our business by acts, events, omissions or accidents beyond our reasonable control, including (without limitation) strikes, lock-outs or other industrial disputes (whether involving our workforce or the workforce of any other party), failure of a utility service or transport network, act of God, war, riot, civil commotion, malicious damage, compliance with any law or governmental order, rule, regulation or direction, accident, breakdown of plant or machinery, fire, flood, storm or default of suppliers or subcontractors.

11.4 Waiver

11.4.1 A waiver of any right under these Terms and Conditions is only effective if it is in writing and it applies only to the circumstances for which it is given. No failure or delay by a party in exercising any right or remedy under these Terms and Conditions or by law shall constitute a waiver of that (or any other) right or remedy, nor preclude or restrict its further exercise. No single or partial exercise of such right or remedy shall preclude or restrict the further exercise of that (or any other) right or remedy.

11.4.2 Unless specifically provided otherwise, rights arising under these Terms and Conditions are cumulative and do not exclude rights provided by law.

11.5 Law and Jurisdiction

11.5.1 These Terms and Conditions and any dispute or claim arising out of or in connection with them or their subject matter, shall be governed by, and construed in accordance with, the law of England and Wales.

11.5.2 The parties irrevocably agree that the courts of England and Wales shall have exclusive jurisdiction to settle any dispute or claim that arises out of, or in connection with, Terms and Conditions or their subject matter.

Postal Charges

Prices for all items including postage and packaging

Invoice Value	UK	EU	Rest of the World
Up to £1,500	£12	£18	£25
Up to £10,000	£20	£40	£50
Above £10,001	£30	£60	£75

The above fees are in GBP and would be converted into the sale currency if applicable.

Shipments of more than 2kg or volumetric measurement of more than 2kg have to be sent by courier. Certain countries may incur extra charge when courier services are required by our insurance policy. For lots sent by courier please contact Auctionteam@spink.com for calculation of any further relevant cost in addition to the above charges.

Value Added Tax (VAT)

Charging of (VAT) at Auction

The information shown on this page sets out the way in which Spink intends to account for VAT.

i. Auctioneers' Margin Scheme

1. Where possible, we will offer Lots for sale under the Auctioneers' Margin Scheme. Such Lots can be identified by the absence of any VAT symbol next to the Lot number in the catalogue. Such lots are subject to 20% VAT on the Buyers' Premium but are not be subject to VAT on the Hammer Price.

2. Where Lots are sold using the Auctioneers' Margin Scheme to UK VAT-registered businesses, the VAT on Buyers' Premium is not recoverable as input tax. Upon request on sale day, we will issue invoices that show VAT separately on both the Hammer Price and the Buyer's Premium. This will enable VAT-registered businesses to recover the VAT charged as input tax, subject to the normal rules for recovering input tax.

ii. Zero-Rated Lots

Limited Categories of goods, such as books, are Zero-rated (o) for VAT in the United Kingdom. Such Lots are offered under the Auctioneers' Margin Scheme. In these circumstances no VAT will be added to the Buyer's premium.

iii. Daggged Lots

Lots which are Daggged (†) in the catalogue are subject to VAT at 20% on both the Hammer Price and the Buyer's Premium.

iv. Imported and Omega Lots

Lots which are marked (x) in the catalogue are subject to VAT at 5% on the Hammer price plus 20% on the Buyer's premium. Lots which bear the Omega symbol (Ω) are subject to VAT at 20% on the Hammer Price and on the Buyer's Premium. This VAT is payable on items imported from outside the EU. In these cases we have used a temporary importation procedure, which in effect means that the point of importation is deferred until the Lot has been sold. At this point the Buyer is treated as the importer and is liable to pay the import VAT due. We will collect the VAT from you and pay it to HM Customs and Excise on your behalf.

v. Investment Gold Lots

Lots marked (g) in the catalogue are exempt from VAT on the Hammer Price and are subject to VAT at 20% on the Buyer's Premium. A refund of VAT charged on the Buyer's Premium can also be made on receipt of proof of business as a collectibles dealer outside of the EU.

SPINK

WHERE HISTORY IS VALUED

SALE CALENDAR 2020

STAMPS

9-24 June	Stamps of Great Britain e-Auction	London	20140
8-22 July	Essays, Proofs and Stamps of Malaysia and Singapore e-Auction	London	20136
8-16 July	The Philatelic Collector's Series e-Auction	New York	174
13-14 July	The Philatelic Collectors' Series Sale	London	20035
15 July	Historical Documents, Postal History and Autographs	London	20025
15 July	The 'Lionheart' Collection of Great Britain and British Empire-Part XII	London	20012
16 July	Stamps and Covers of South East Asia	London	20033
18 July	The Philatelic Collectors' Series Sale	Hong Kong	CSS49
18 July	Fu Xin Tang Collection	Hong Kong	20058
25 Aug.-8 September	Stamps of the British Commonwealth	London	20139
13 October	The Gary Diffen Collection of Australian Colonies Errors-Part 2	London	20039
13 October	The 'Lionheart' Collection of Great Britain and British Empire-Part XIII	London	20013
14 October	The Philatelic Collectors' Series Sale	London	20040
15 October	The "Dubois" Collection of Jamaica Postal History and Stamps-Part I	London	20041

COINS

29 June-12 July	The Numismatic e-Auction	Hong Kong	CSS52
18 June-2 July	Spink Numismatic e-Circular 3-Part II: The Sovereign	London	20133
25 June-8 July	Spink Numismatic e-Circular 3-Part I: The Penny	London	20123
22-30 July	The Numismatic Collector's Series e-Auction	New York	361
4-19 August	Spink Numismatic e-Circular	London	20124
18-19 August	The Numismatic Collectors' Series sale	Hong Kong	CSS51
26 August	The Numismatic Collector's Series Sale	New York	360
15-16 September	British Coins and Commemorative Medals: Autumn Auction	London	20005
24 Sept.-8 October	Spink Numismatic e-Circular: Indian and Islamic Coins	London	20125

BANKNOTES

29 June-12 July	The Numismatic e-Auction	Hong Kong	CSS52
18-19 August	The Numismatic Collectors' Series sale	Hong Kong	CSS51
21 July-4 August	World Banknotes e-Auction	London	20110
22-30 July	The Numismatic Collector's Series e-Auction	New York	361
26 August	The Numismatic Collector's Series Sale	New York	360
1 October	The Mark T. Ray Collection of English Banknotes	London	20021

MEDALS

22-30 July	The Numismatic Collector's Series e-Auction	New York	361
29-30 July	Orders, Decorations and Medals	London	20002
26 August	The Numismatic Collector's Series Sale	New York	360

BONDS & SHARES

11-30 June	Stocks and Bonds of the United States e-Auction	London	20119
30 July - 18 August	Bonds and Share Certificates of the World e-Auction	London	20128

HISTORICAL DOCUMENTS

15 July	Historical Documents, Postal History and Autographs	London	20025
---------	---	--------	-------

LIFESTYLE COLLECTABLES

22-29 May	Fine Whisky & Rum E-Auction	Hong Kong	SFW34
-----------	-----------------------------	-----------	-------

The above sale dates are subject to change

Spink offers the following services:

- VALUATIONS FOR INSURANCE AND PROBATE FOR INDIVIDUAL ITEMS OR WHOLE COLLECTIONS -
- SALES ON A COMMISSION BASIS EITHER OF INDIVIDUAL PIECES OR WHOLE COLLECTIONS -





BY APPOINTMENT TO
HER MAJESTY THE QUEEN
STAMP & SPIRITS, LONDON



BY APPOINTMENT TO
HIS MAJESTY THE KING
STAMP & SPIRITS, LONDON

SPINK

WHERE HISTORY IS VALUED

FOUNDED
1666

STAMPS COINS BANKNOTES MEDALS BONDS & SHARES AUTOGRAPHS BOOKS
WINE & SPIRITS HANDBAGS COLLECTIONS ADVISORY SERVICES SPECIAL COMMISSIONS

69 Southampton Row, Bloomsbury, London WC1B 4ET
www.spink.com