



THE CAMPING COLLECTION OF GREAT BRITAIN

SPINK

WHERE HISTORY IS VALUED

18 SEPTEMBER 2019

LONDON



THE CAMPING COLLECTION OF GREAT BRITAIN

Sale Venue:

At The Royal Philatelic Society London

15 Abchurch Lane

2nd Floor

London

EC4N 7BW

tel +44 (0)20 7563 4005 fax +44 (0)20 7563 4037

Vat No: GB 791627108



Sale Details | Wednesday 18 September 2019 at 10.30 a.m.

When sending commission bids or making enquiries,
this sale should be referred to as **CAMPING - 19043**

Viewing of Lots | At our stand #122 at Stampex Exhibition, The Business Design Centre.

52 Upper Street, Islington London N1 0QH

From 11 September 2019 to 13 September 2019

| At The Royal Philatelic Society London

Monday 16 September 2019 at 10:00 a.m. – 5:00 p.m.

| Private viewing by appointment only

Live platform | **SPINK**  **LIVE**

Your Specialist for this Sale



Neill Granger

FRPSL

ngranger@spink.com

+44 (0)20 7563 4077

Bids

Dora Szigeti

auctionteam@spink.com

+44 (0)20 7563 4005

fax +44 (0)20 7563 4037

Internet Bidding

Michael Lewis

support@spink.com

+44 (0)20 7563 4090

Payment Enquiries

Veronica Morris

creditcontrol@spink.com

+44 (0)20 7563 4018

VAT Enquiries

John Winchcombe

jwinchcombe@spink.com

+44 (0)20 7563 4101

The Spink Environment Commitment: Paper from Sustainable Forests and Clean Ink

Spink has a long history of preserving not only collectables but our planet, too. We are proud to ensure that our policy of sustainability and conservation keeps up with Spink's growth, helping improve the environment for new generations of collectors.

We insist that our printers source all paper used in the production of Spink catalogues from FSC and/or PEFC suppliers and use non-hazardous inks. We also ask they hold the environmental standard ISO 14001.

Spink recycle all ecological material used on our premises and we encourage you to recycle your catalogue once you have finished with it.

Front Cover Illustration: Wood Engraving by [C.R.], [1869]. Wellcome Collection Back Cover Illustration: 685, 688, 759

Inside Front Cover Illustrations: 526, 540, 543, 550, 668, 672, 683, 832, 835, 838, 656, Inside Back Cover Illustrations: 724, 728, 732

www.spink.com

@SpinkandSon

#Spink_Auctions

Spink_auctions

Spinkauctions

Spink_auctions



Group Chairman And CEO

Olivier D. Stocker

Directors

Tim Hirsch FRPSL Anthony Spink

Chief Financial Officer

Alison Bennet

Head of EMEA

Mira Adusei-Poku

mpoku@spink.com

Global Head of Banknotes and Bonds

Kelvin Cheung

kcheung@spink.com

Specialists

Stamps

Tim Hirsch FRPSL

David Parsons

Nick Startup

Neill Granger FRPSL

Dominic Savastano

Josh Barber

Thomas Fell

Ian Shapiro (Consultant)

George Eveleth

Guido Craveri (Consultant)

Christopher Green

George Yue (Consultant)

Alan Ho

Bonds & Shares

Mike Veissid (Consultant)

Peter Christen (Consultant)

Books

Emma Howard

Nik Von Uexkull

Client & Auction Management

Geoff Anandappa

Dora Szigeti

Nik Von Uexkull

Alzbeta Lanova

John Winchcombe

Viola Craveri

Samantha Lanevi

Newton Tsang

Christina Kong

PR & Marketing

Rita Ariete

Ray Chung

Chief Customer Officer

Rita Ariete

Head of Americas

Charles J Blane

cblane@spink.com

Coins

Richard Bishop

Tim Robson

Gregory Edmund

Lawrence Sinclair (Consultant)

Barbara Mears

Ellie Boot

Greg Cole

Kin Choi Cheung

Paul Pei Po Chow

Joseph Lam

Historical Documents

Thomas Fell

Neill Granger FRPSL

Ian Shapiro (Consultant)

Greg Cole

Finance

Alison Bennet

Sue Pui

Marco Fiori

Mina Bhagat

Dennis Muriu

Veronica Morris

Nicholas Waring

Representatives For Australia

Peter Griffiths - pgriffiths@spink.com

Michael R. Downey - mdowney@spink.com

Representative For Canada

Timothy J. Stewart - tstewart@spink.com

Representative For Japan

日本での弊社オークションへの出品・参加に関してのお問い合わせ

Alan Ho - japan@spink.com

Representative For South Africa

Andrew Kennedy - akennedy@spink.com

Chief Operating Officer

Mira Adusei-Poku

Head of Asia-Pacific

Sue Pui

spui@spink.com

Banknotes

Barnaby Faull

Elaine Fung

Arnas Savickas

Greg Cole

Paul Pei Po Chow

Orders, Decorations & Medals

Marcus Budgen

Iain Goodman

Jack West-Sherring

Greg Cole

Wine & Spirits

George Koutsakis

Special Commissions

Ian Copson

Robert Wilde-Evans

IT & Administration

Michael Lewis

Berdia Qamarauli (Consultant)

Liz Cones

Slawomir Kolsut

Tom Robinson

Newton Tsang

Christina Kong

Jacqueline Wong

Spink UK

69 Southampton Row

Bloomsbury

London

WC1B 4ET

Email:

conciierge@spink.com

Tel: +44 (0)20 7563 4000

Fax: +44 (0)20 7563 4066

Spink USA

145 W. 57th St.

18th Floor

New York, NY

10019

Email:

usa@spink.com

Tel: +1 646 941 8664

Fax: +1 646 941 8686

Spink China

4/F and 5/F

Hua Fu Commercial

Building

111 Queen's Road West

Sheung Wan

Hong Kong

Email:

china@spink.com

Tel: +852 3952 3000

Fax: +852 3952 3038

Spink Asia

Registered at:

50 Raffles Place

#17-01 Singapore Land

Tower

Singapore 048623

Email:

singapore@spink.com

Spink Switzerland

Via Livio 8

6830 Chiasso

Switzerland

Email:

switzerland@spink.com

Tel: +41 91 911 62 00

Fax: +41 91 922 20 52

SPINK

WHERE HISTORY IS VALUED

In May 2018, Spink was honoured to host for RPSL an auction to assist with the Tomorrow's Royal campaign.

Following the success of that auction Spink is proud to continue being part of the Tomorrow's Royal campaign, by holding some of our most important and prestigious auctions, at the new home of the Royal Philatelic Society of London head quarters.

We believe this is the start of a new era in philately, as well as a significant development in philatelic co-operation for RPSL and Spink London.

With the RPSL now at the forefront of global philately, a development we hope, will benefit all philatelists for many years to come.

Do join us, in the heart of the city of London, for the beginning of a great philatelic adventure.



The first of our auctions to be held at this magnificent venue will be:

17th September 2019

The 'Bartica' Collection of British Guiana Ship Type Issues
The 'Lionheart' Collection of Great Britain and British Empire Part X

18th September 2019

The Camping Collection of Great Britain

Viewing for these auctions will be held at SPINK Stampex stand #122 and thereafter,
16th September on the second floor of the Royal Philatelic Society London.

LONDON | NEW YORK | HONG KONG | SINGAPORE | SWITZERLAND



#SPINK_AUCTIONS WWW.SPINK.COM

Extensions

Prospective buyers who wish to obtain an expert opinion on any lot (other than a mixed lot or lot containing undescribed stamps) are requested to notify Spink in writing not less than forty-eight hours before the time fixed for the commencement of the first session of the sale. If accepted by Spink, such request shall have the same effect as notice of an intention to question the authenticity of the lot for the purposes of Condition 3.4 of our Terms and Conditions for Buyers.

Notice of a request for an expert opinion must give the reason why such is required and specify the identity of the expert which will be subject to the agreement of Spink. All lots for which Certificates of Authenticity are desired must be submitted by Spink to the Expert Committee for choice.

Buyers are reminded that any lot(s) purchased “on extension” are subject to payment in accordance with our normal Terms & Conditions of Business. Settlement of any lots on extension should be made at the time of invoice payment. Overdue accounts are subject to interest charges.

Extensions requested on account of condition will not be accepted for expert opinions. Any Lot described as having faults or defects may not be returned should a certificate cite other faults or defects not included in the catalogue description.

Should Spink accept a request for an extension under the foregoing provisions of this paragraph, the fact may be stated by the Auctioneer from the rostrum prior to the sale of the lot.

It should be noted that any stamp accompanied by a Certificate of Authenticity is sold on the basis of that Certificate only and not on the basis of any other. No request for an extension will be accepted on such a stamp and the return of such a stamp will not be accepted.

Notes Concerning Descriptions

GUM: Original gum should be expected on unused stamps where appropriate, unless stated otherwise in the description:

mint	unused with original gum showing slight disturbance caused by previous hinge, which may be present in part or entirely removed
part original gum	unused with original gum significantly disturbed or heavily hinged
unmounted mint	original gum as issued
unused	without gum

COVERS: Should be expected to have minor nicks and tears usually from opening. Folded letters or covers normally have one or two file folds. These are not described unless of an exceptional nature and are not grounds for return.

entire letter	complete as sent with comments still attached to the outer address portion
entire	the outer portion of a folded letter but without contents
cover	an envelope

Symbols and Abbreviations

⊛	unmounted mint	d.s.	datestamp
★	unused	h.s.	handstamp
○	used	Ⓐ	air mail
⊞	block of four	Ⓢ	specimen
⊞	block larger than four	Ⓒ	cancelled
☒	used on cover, entire letter, etc.	Ⓔ	essay
△	on piece	Ⓟ	proof
var.	variety, varieties	F	forgery
cat.	catalogue, catalogue value	R	reprint
c.d.s.	circular datestamp		

References

Catalogue values and numbers are those taken from the latest available edition.

The use of Gibbons Specialised catalogues in Great Britain sales is clearly indicated. Where other catalogues are used they are mentioned by name.

Buyers are reminded that payment must be made within seven days from the date of sale (condition 5.4.1), and interest will be added for overdue accounts (condition 5.10.1.1).

Please note charges for credit card payments (condition 5.4.3(iii)).

Buyers are reminded that if they default on a successful bid that details relating to such default may be shared with other auction houses and live bidding platforms (condition 5.11).

Note: All buyers must read the notes concerning requests for Extensions printed on page 4 of this catalogue.

The Terms of that notice must be complied with fully under all circumstances.

Please note that 'Spink Live' is now running on a new and improved on-line bidding platform, which is accessible through www.spink.com and also as a SpinkLive app available for download from the App Store.

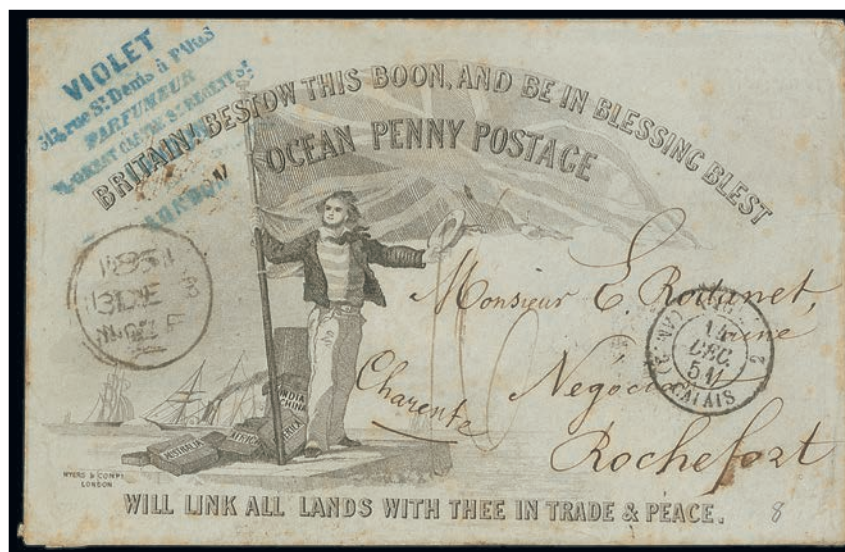
You can continue bidding online free of charge.

18 SEPTEMBER 2019

Commencing at 10.30 a.m.

GREAT BRITAIN

ILLUSTRATED ENVELOPES



501

501 ☒

Ocean Penny Post: Myers & Co. design, first state; 1851 (13 Dec.) stampless cash paid cover to France bearing London despatch, Calais transit (14.12) and "1/-" rate mark in ink and, on the reverse, further London c.d.s. and Rochefort arrival (15.12) c.d.s.; there is additional company handstamp on the address side and some contemporary postage notes on the reverse. Some light ageing but a good cover which is quite scarce to an overseas destination. Photo

£150-200

1840 ONE PENNY BLACK

Plate Ia



502



503

502 ○

EG with large even margins and a light strike brownish red Maltese Cross. Photo

£140-160

503 ★

EH, small to large margins, unused without gum; slight thinning near the lower left corner. Fresh appearance. Photo

£400-500

1840 One Penny Black, Plate Ia - *contd.*



504

504 ☒

IC showing some plate wear, large to very large margins all round and used on 1840 (13 May) wrapper to Sheffield, cancelled by a light strike of carmine-red Maltese Cross, addressed to Sheffield and with Birmingham despatch c.d.s. on the reverse; the addressee's name has been crossed through. A good early cover. S.G. A1tf, £3500. Photo

£500-600

Plate Ib



505

505 ○田

IC-JD block of four in a dark shade, close to large margins all round and cancelled by upright strikes of a deep red Maltese Cross; ID showing the re-entry. There is a small repaired nick into ID and small scissor cut between ID and JD. An attractive block. Cat. £16,000. Photo

£1,200-1,500



506

506 ★

IH, small to very large margins, unused with some gum; shows the varieties recut left side and break in N.E. corner. A fresh and attractive stamp. S.G. AS5h, £13,000. Photo

£1,000-1,200



507



508

- 507 ○ HL in a lighter shade showing broken H square variety, with large to very large margins, **watermark inverted**, a central strike of dark orange-red Maltese Cross. Fine and attractive. S.G. AS51, £2500. Photo £350-400
- 508 ★ LK with good even margins, unused with gum. Photo £800-1,000

Plate II



509

- 509 ○ JB, good to large margins and cancelled by an upright strike of red Maltese Cross. Photo £100-120



510

- 510 ○**B** KE-LH block of eight in a deep shade with good to large margins and cancelled by deep orange-red Maltese Cross and part town c.d.s. in black. There is a large repair at the foot of this block and other small faults. Spectacular appearance. Photo £600-800
- PROVENANCE:
Robson Lowe auction, April 1970

1840 One Penny Black - *contd.*

Plate III



511

511 ☒

LK in deep black, large to very large margins all round and cancelled by bright orange-red Maltese Cross on wrapper to Tranent School; redirected to Edinburgh with 1d. plate Ia, QD in a greyish shade, small to very large margins and cancelled by dull red Maltese Cross, the reverse with indistinct Scottish despatch datestamp, Tranent 1840 (3 Nov.) and Edinburgh (5.11) c.d.s.; there is some light ageing but a very attractive redirected cover bearing the additional postage. Photo

£200-250



512



513

512 ○

NL with good to very large margins showing a fragment of the stamp at left, cancelled by dull orange-red Maltese Cross. Photo

£120-150

513 ○

PH with good to large even margins, cancelled by orange-red Maltese Cross. Fresh. Photo

£120-150

Plate IV



514

514 ☒

AB, AH two singles in deep shades, good to large margins, both enormous at top, tied by pale red Maltese Cross on wrapper to Stockton on Tees with a good strike of "Middleton one Row/Penny Post" handstamp alongside and, on the reverse, a fine strike of Darlington 1840 (23 Aug.) despatch c.d.s.; two vertical filing folds, one through AH. An attractive double-weight cover. Photo

£220-250



515

515 ★

AE with good even margins, unused with some gum; there is a light diagonal bend across the lower left corner. Photo

£800-1,000

1840 One Penny Black, Plate IV - *contd.*



516



517



518

- 516 ○ FA large to enormous margins showing traces of two adjoining stamps, used with a light strike of the opaque orange-red Maltese Cross; there are a couple of trivial imperfections. A handsome stamp. Photo £120-150
- 517 ○ NA good to large margins, a neat and light strike of black Maltese Cross; fine and very attractive. Photo £150-180
- 518 ○ OF-OG horizontal pair, good margins all round, slightly smudged strikes of orange-red Maltese Cross. Photo £200-250



519

- 519 ★ OF with small to large margins, unused with gum which is not original. Fresh appearance. Photo £700-900



The Royal Philatelic Society
London HQ
15 Abchurch Lane,
London, EC4N 7BW
www.rpsl.org.uk

SPINK

WHERE HISTORY IS VALUED

Spink is proud to continue being part of the Tomorrow's Royal campaign by holding some of our most important and prestigious auctions, at the new HQ of the Royal Philatelic Society of London.

We believe this is the start of a new era in philately, as well as a significant development in philatelic co-operation for RPSL and Spink London.

With the RPSL now at the forefront of global philately, a development we hope, will benefit all philatelists for many years to come.

Do join us, in the heart of the city of London, for the beginning of a great philatelic adventure.

The first of our auctions to be held at this magnificent venue will be:

17th September 2019
The 'Bartica' Collection of British Guiana Ship Type Issues
The 'Lionheart' Collection of Great Britain and British Empire Part X

18th September 2019
The Camping Collection of Great Britain

Viewing for these auctions will be held at SPINK Stampex stand #122 and thereafter, 16th September on the second floor of the Royal Philatelic Society London.

LONDON | NEW YORK | HONG KONG | SINGAPORE | SWITZERLAND



#SPINK_AUCTIONS WWW.SPINK.COM



520



521

520 △

QB with small to enormous margins showing a portion of the design below, affixed on small piece by two very sharp strikes of black Maltese Cross, contrary to regulations. A striking items of great visual appeal. Photo

£120-150

Plate V

521 ○

QD with good to very large margins and a light and central strike of black Maltese Cross. Photo

£100-120



522

522 ○田

SK-TL block of four with good to large even margins all round, cancelled by rather heavy strikes of upright Maltese Cross in black; there is a pin hole in the corner of SK. A good block. A. Dina Certificate (1956). Photo

£1,000-1,200

PROVENANCE:

Robson Lowe auction, May 1953



523

523 ★

TH, a slightly pale shade with good margins, unused without gum. Photo

£800-1,000

1840 One Penny Black - *contd.*

Plate VI



524

- 524 ○ NG in an intense shade, good to large margins with a slightly smudged orange-red Maltese Cross. Fresh and fine. Photo £120-150



525



526

- 525 ★ SD in a slightly lighter shade, small to large margins showing a fragment of the design to the left, unused with some gum which is not original. An attractive example. Cat. £13,000. Photo £1,200-1,500
- 526 ★ SG in an intense shade, good to large margins, unused with gum. Attractive. Photo £1,200-1,500

Plate VII



527

- 527 ○ HL with good to large margins a light strike of bright red Maltese Cross. Fresh and attractive. Photo £100-120

Plate VIII

- 528 ☒ Printings in red: DD, DF (corner crease) with good to large margins, on 1841 (Apr.) wrapper to Pall Mall, just tied by black Maltese Cross with, on the reverse, smudged datestamp in red and part "T.P./CHIEF OFFICE" in black; vertical folding creases away from the stamps £80-100

Plate IX



529



530



531

- 529 ○ AA with good to enormous margins from the sheet corner, cancelled by a light strike of black Maltese Cross; there is a light diagonal crease. Photo £100-120
- 530 ○田 RA-TB block of six, touched to very large margins and cancelled by slightly smudged strikes of black Maltese Cross; TB with double letter "T". TL with repaired corner and top stamps with corner creases. A scarce multiple. Photo £800-1,000
- PROVENANCE:
Laycock, March 1953
- 531 ★田 Printing in red: PG-QH block of four with large even margins, on blued paper with full original gum; there are a couple of tiny central thin spots. A fresh and desirable block. Cat. £32,000. Photo £3,000-4,000

Plate X



532

- 532 ○ OB matched pair; black in a slightly greyish shade with good to large margins and a faint black Maltese Cross; red with good to large margins and a light and upright strike of black Maltese Cross. Fine and attractive. Photo £200-240
- 533 田 Red printing: AL with good to very large margins on 1841 (19 Aug.) wrapper to Exmouth, the adhesive tied by a light and neat strike of black Maltese Cross, the reverse with Honiton and Exmouth c.d.s. £80-100

1840 TWO PENCE BLUE

Plate 1



534

534 ○

HC-HF strip of four in pale blue shade, good to large margins all round and cancelled by strikes of orange-red Maltese Cross; there are two vertical folds between the stamps. A good strip. Photo

£800-1,000



535

535 ○

IC-IE horizontal strip of three in blue, very close to large margins with neat strikes of black Maltese Cross; there is a small nick into IE. Attractive. Photo

£400-500



536



537

536 ○

LG-LH in a steel-blue shade, good to very large margins showing fragments of the two designs above and cancelled by central black Maltese Cross; there is a small scissor cut into LH. Photo

£200-300

537 ○

RB-RC horizontal pair in dull blue, small to large margins with neat and central strikes of black Maltese Cross; light horizontal bend. Fresh and attractive. Photo

£250-300



538

- 538 ○ RG-RL horizontal strip of six in a dull blue shade, close to large margins all round and cancelled by part strikes of indistinct black Maltese Cross; there is a light vertical bend through RL. A good strip. Photo £1,000-1,200



539



540

- 539 ○ SB-SC horizontal pair in a milky blue shade, good to very large margins showing a fragment of the design at left, cancelled by light strikes of black Maltese Cross. Photo £400-500

Plate 2

- 540 ○ DL in a full blue shade, large margins and a neat strike of black Scottish Maltese Cross. Fresh and attractive. Photo £200-250



541



542

- 541 ○ GJ in a full blue shade, very large even margins with light strikes of black Maltese Cross; there is a light diagonal crease. A most attractive example. Photo £150-200

- 542 ○ JC-JD horizontal pair in pale blue, good margins all round with light and neat strikes of black Maltese Cross; there are a couple of minor bends. A very appealing pair. Photo £350-400

1840 Two Pence Blue, Plate 2 - *contd.*



543

543 ○

LA in a full blue shade, small to large margins and cancelled by a light strike of the Maltese Cross struck **in blue**; there is a light horizontal bend at foot. An important rarity. S.G. D1ud, £15,000. Photo

£2,000-2,500



544

544 ○

LE in a rich, deep blue shade (or steel-blue), good to large even margins, a light and indistinct strike of black Maltese Cross. A stunning stamp. Photo

£250-300



545

545 ○

OG-OI horizontal strip of three in a deep blue shade, close to large margins with incomplete strikes of black Maltese Cross; there is a small fault at the foot of OH and a couple of other minor imperfections. Karl-Albert Louis Certificate (1998). Photo

£400-500



546



547

- 546 ○ PF-PH horizontal strip of three in a rich blue shade, good to very large margins and light strikes of black Maltese Cross; there is a light vertical bend on PH. A handsome strip. Photo £500-600
- 547 △ RL in a steel-blue shade, good to large margins and tied on small piece by a light strike of black Maltese Cross. Fine. Photo £180-200



548

- 548 ☒ TL in a rich shade, large to very large margins and just tied on 1841 (6 May) entire to Preston by an indistinct strike of black Maltese Cross, the reverse with Manchester and Preston c.d.s. for the same date. An attractive cover. Cat. £3000. Photo £500-600

1840 "VR" OFFICIAL

549

549 ★

DF in black, small to large margins, with gum; there is a tiny black mark in the left margin and a light diagonal crease near the lower left corner. Fresh appearance. S.G. VR1, £32,000. Photo

£4,000-5,000



550

550 ★

EI-EJ horizontal pair with good to large even margins and large part original gum; there is a horizontal crease near to the top. A desirable pair. Cat. £90,000. Photo

£8,000-10,000



551

551 ★

MI with good to large even margins, unused without gum. A good example. Photo

£4,000-5,000

1841 ONE PENNY RED-BROWN

552 ☒

Plate 22, OB with good to large margins on 1841 (4 Dec.) wrapper to Barnards Castle, well tied by a light and neat strike of black Maltese Cross, the reverse with London despatch and Barnards Castle (5.12) c.d.s.; light horizontal fling crease. Attractive

£50-60



553

553 ★ ☒

Plate 137, CG-DI block of six in deep red-brown, close to large margins, large part original gum; there is a long scissor cut between right pair, just cutting into the lower stamp and vertical crease at left. Photo

£600-800



554

554 ★ ☒

Plate 145, QG-RI block of six in red-brown on blued paper, touched or cut close at left, other margins good to large, part original gum; horizontal bend through lower row. Good appearance. Photo

£500-600

1841 One Penny Red-Brown - *contd.*



555

555 ★[®]

Plate 171, RB-TF block of fifteen in a light red-brown shade on blued paper, good to large margins all round but just cut into TE, part original gum; horizontal and vertical folds. A good multiple. Photo

£1,200-1,500



556

556 ○

1842 (14 Apr.) DD in red-brown with touched to large margins and cancelled by a central strike of a town datestamp of Belfast. S.G. B1va, £800. Photo

£80-100

1841 TWO PENCE BLUE

Plate 4



557



558

557 ★ DG in a lighter blue shade, small to large margins, unused with some gum. S.G. ES14, £6000. Photo £800-1,000

558 ○ GB with large even margins and cancelled by 1844-type numeral **in blue**; attractive. S.G. E1wb £1000. Photo £150-200



559

559 ○田 IG-KH block of four on blued paper with good to large margins, a little close in a couple of places, neatly cancelled by "620" numerals of Plymouth. A good block. Cat. £1300. Photo £240-280



560

560 ★ OA-OC horizontal strip of three in a dull blue shade, with close to large margins, unused with some gum; there appears to be some repair to a horizontal crease at top. OA shows the thin base line variety under the value. Photo £1,000-1,200

1854-57 STARS

Watermark Small Crown, Perf.16



561



562

561 ★

1d. orange-brown, die I, DG-EI block of six, unused without gum; centred a little low. A good block. S.G. 17. Photo

£250-300

562 ★

2d. blue, plate 4, PH, unused with gum which is not original; centred low. S.G. 19, £4750. Photo

£200-250


Watermark Large Crown, Blued Paper



563



564

563 ★

1d. red-brown, perf.14, BG-CH block of four, large part original gum; centred a little low and a couple of gum wrinkles. S.G. 29. Photo

£200-250

564 ○

2d. blue, plate 5, perf.14, MH-NI block of four cancelled by "435" duplex in blue; centred a little low and a couple of small corner creases. An unusual block. R.P.S. Certificate (1990). S.G. 34, £1000+. Photo

£150-200

1856-58 STARS

Cream-Toned Paper



565

- 565 ★ 1d. pale red, MA-ME horizontal strip of five, unused without gum; well centred. S.G. C9. Photo £200-250

White Paper



566

- 566 ★ 1d. deep rose-red, plate 52, TA-TC in a lower left corner strip of three showing the plate number and part inscription; part to large part original gum; some light ageing. A good positional piece. Photo £80-100
- 567 ★田 1d. rose-red, plate 58, OD-PE block of four, with full original gum; centred a little low. Fresh and fine. S.G. 40 £60-80
- 568 ★B 1d. rose-red, reserve plate 17, EJ-FK right margin block of six with inscription in the margin, part original gum; some light creasing. Well centred and attractive. S.G. 40 £80-100
- 569 ★B 1d. rose red, BI-DL block of twelve, large part original gum; a fraction off-centre. Fresh. S.G. 40 £120-150



570

- 570 ★田 1d. pale rose-red. alphabet II from reserve plate 15, BH-CI block of four, large part original gum; centred a little low. S.G. C13, £1300. Photo £140-160

1864-79 ONE PENNY PLATE NUMBERS

571 ★[®] Plate 99, PD-TF rose-red block of fifteen, large part original gum £150-180



572



573

572 [®] Plate 145, AH lake-red imprimatur with top margin; usual fold along the margin. Fine. Photo £80-100

573 ★ Plate 225, GL in lake-red, large part original gum. Fresh, Cat. £3200. Photo £450-500

1858-76 TWO PENCE PLATE NUMBERS



574



575



576

574 ★ Plate 7, QB, unused without gum. Cat £2000. Photo £100-120

575 ★ Plate 9, LD-LF horizontal strip of three, unused with traces of gum; some black fibre adherences on the reverse and some split perfs. between LD-LE. Photo £100-120




576 ★[®] Plate 14, NJ-OL block of six, with full original gum; some typical gum wrinkles. Photo £300-350

577 ★ Plate 15, QB-QC horizontal pair, with full original gum. Fresh £120-150

1870 HALF PENCE PLATE NUMBERS




578

- | | | |
|---|--|----------|
| 578 ★  | Plate 1: FV-HW block of six, large part original gum; well centred and fresh. Photo | £250-300 |
| 579 ★  | Plate 4: AT-BU and CT-DU two adjoining blocks of four with full original gum, there are a couple of light creases. Fresh | £120-150 |
| 580 ★  | Plate 11: IO-JP, KO-LP in adjoining blocks of four, with full original gum; well centred. Fresh. | £120-150 |



581

- | | | |
|---|---|----------|
| 581 ★  | Plate 12: KG-LJ block of eight, large part original gum; a few perf. reinforcements, centred a little high. Photo | £150-180 |
|---|---|----------|



The Royal Philatelic Society London

We are pleased to receive proposals for membership of the Society which is through election.

If you are interested in membership, please contact us at secretary@rpsl.org.uk

If you have no proposer or seconder, please contact us for further information.

Tel: 00 44 (0)20 7486 1044 | www.rpsl.org.uk

The world's oldest and most prestigious philatelic society, established 1869, with over 2,000 members in more than 70 countries.

Extensive premises in London's West End house the Society's superlative library, plus Museum and Archive, and provide first-class meeting facilities.

The Society's Online Catalogue provides access to over three-quarters of a million philatelic indexes to members world-wide.

A fascinating programme of displays and meetings throughout the year, supplemented by regional meetings and gatherings at major international events.

The Society publishes ten times a year its own journal, *The London Philatelist*, containing articles of outstanding philatelic research, in addition to publishing major philatelic works.

We are honoured to have Her Majesty Queen Elizabeth II as our Royal Patron

1870 Half Pence Plate Numbers - *contd.*



582

582 ★ B

Plate 13: BC-EE block of twelve with full original gum; some gum wrinkling including through the C row. Well centred and attractive. Photo

£200-250



583

583 ★ B

Plate 13: RF-TJ in a lower margin block of fifteen, with full original gum and showing part of the margin inscription; a couple of perf. reinforcements and occasional tone spot, A well centred and handsome block. Photo

£250-300

584 ★ B

Plate 14: CN-DP block of six in a deep shade, with full original gum; centred to the right.
A fresh block

£120-150

1870 ONE AND A HALF PENCE PLATE NUMBERS

1860 Unissued Rosy Mauve



585

585 ⑤

1½d. rosy-mauve, GE overprinted "SPECIMEN" type 2, unused with some traces of gum; well centred. S.G. G5s, £2200. Photo

£350-400



586



587

586 〇田

Plate 1: LD-ME block of four with neat 1872 Loughborough c.d.s.; there are a few split perfs. but well centered and an attractive block. Cat. £750. Photo

£120-140

587 ★田

Plate 3: FB-GD block of six in lake-red, with full original gum; blunt corner and a few split perfs. Photo

£300-400



588

588 ★田

Plate 3: LE-NF block of six in lake-red, with full original gum; a few split perfs. in the centre. Exceptionally fresh appearance. Photo

£400-500

1847-54 EMBOSSED ISSUES



589



590

589 ○

1/- green with good margins all round with a neat and part strike of number cancellation. Fresh and attractive. S.G. 55, £1000. Photo

£150-200

590 ○

1/- bright green, die 1 block of six cancelled by Greenwich "20" numerals, mixed margins, light horizontal crease and a short split along one of the threads. An attractive multiple. Photo

£600-800



591

591 ○

1/- pale green, die 2 in a horizontal pair, one showing the variety **double print from off-set**, touched or just cut into on three sides and cancelled by Liverpool "466" numerals. An appealing and highly unusual variety. Buhler handstamp on reverse, B.P.A. Certificate (1964). Photo

£400-500



592



593



594

- 592 © 10d. brown, die 1 overprinted "SPECIMEN" type 1, touched to large margins, without gum and a couple of small paper faults. S.G. 57s, £3000. Photo £200-300
- 593 ★ 10d. brown, die 2, close to large margins and unused with part original gum; two dealer's guarantee marks on the reverse. A fresh and most attractive example. S.G. 57, £11,500. Photo £1,000-1,200
- 594 ★ 10d. brown, die 4 with small to very large margins, unused with large part original gum; there is an 8mm split along the thread at the foot. A fresh stamp of fine appearance. Cat. £13,000. Photo £400-600



595



596

- 595 © 6d. dull lilac overprinted "SPECIMEN" type 1, a horizontal pair from the lower right corner of the pane, cut into on two sides, large part original gum. S.G. 58s, £7800. Photo £400-500
- 596 ★ 6d. purple in a horizontal pair with left margin, other margins are mixed, large part original gum; there is a repair at the top of the right hand stamp; fresh. S.G. 60. Photo £1,000-1,200

1847-54 Embossed Issues - *contd.*

Covers



597

597 ☒

1853 (24 May) small envelope to Bangalore "*pr Over Mail via Marseilles*" bearing 10d. brown and 1/- green, mixed margins and cancelled by Stoke Newington "7" numerals, the reverse with despatch and Madras Bearing transit. Unusual. Photo

£300-400



598

598 ☒

1854 (13 May) blue entire registered to Macclesfield bearing 6d. mauve (just touched or cut into on two sides) with 2d. blue Stars cancelled Dulwich "24" numerals and, on the reverse, despatch and Macclesfield arrival (14.5) datestamps; free from the usual filing creases. Paying double rate plus 6d. for registration. Photo

£150-180

SURFACE PRINTED

1855-57



599



600

599 ○田

4d. carmine on blued paper, watermark medium garter, in a block of four cancelled by indistinct numeral cancellation; some reinforced perfs. at top. Fine and a scarce block. S.G. 63, £3500. Photo

£400-500

600 ★

4d. rose-carmine, watermark large garter, unused with traces of gum; there is a tiny paper split at foot. Fresh and fine appearance. S.G. 66, £2100. Photo

£100-150



601



602



603

601 ○田

4d. rose-carmine, watermark large garter, block of four cancelled by neat Blackburn "86" numerals. A fine block. Cat. £775. Photo

£120-140

602 ○田

6d. lilac in a block of four neatly cancelled by Chatham "173" numerals; centered a little to the right and short perf. at top. S.G. 68, £700. Photo

£80-100

603 ○

6d. deep lilac on azure paper used with indistinct numeral cancellation and part of a blue transit mark, centred a little high. Philatelic Expertising Certificate (1998). S.G. 70a, £950. Photo

£120-150

Surface Printed, 1855-57 - *contd.*



604

604 ○

1/- green in a horizontal strip of four cancelled by neat Liverpool "466" numerals; ink manuscript mark at right. S.G. 72, £1400. Photo

£150-180



605

605 △

1/- pale green in a block of four tied on small piece by 1860 (26 July) London "W/13" duplex; there are a few clipped perfs. Cat. £2000. Photo

£120-150



606

606 ○B

1/- green in a wing margin block of six (2x3) **watermark inverted** cancelled by Dulwich "24" numerals; there are a few small imperfections as to be expected from such a block. S.G. 72wi. Photo

£400-600



607

- 607 ☒ 1856 (3 Apr.) flimsy Prices Current to Lyon bearing 4d. carmine, small garter with wing margin, cancelled by London numeral and tied by Calais transit (4.4), the reverse with despatch c.d.s., transit and arrival (5.4) c.d.s. A good cover. Cat. £780. Photo £100-120
- 608 ☒ 1857 (18 Sept.) small envelope to Germany bearing pair of 4d. rose-carmine tied by Ventnor, Isle of Wight "971" numerals with "PD" in oval alongside, an array of backstamps with Ventnor despatch, London (18.9), Calais (19.9) and Luxembourg arrival; the adhesives have been applied close to the edge of the cover. A good franking £60-80
- 609 ☒ 1858 (15 Dec.) blue wrapper to Berlin bearing two 4d. rose-carmine, each with wing margin, cancelled by Tooting "28" numerals with "P" in oval overstruck by Per Aachen transit c.d.s. in red, the reverse with London thimble despatch c.d.s. in blue overstruck by Berlin arrival (17.2); one of the side flaps is missing £60-80
- 610 ☒ 1862 (6 Feb.) small envelope to Florence bearing two 6d. lilac tied by Dorking "257" duplex with "PD" in oval alongside, the reverse with London (6.2), various transit and Firenze arrival (11.2) c.d.s.; oil stain at left £60-80



The Royal Philatelic Society
London HQ
15 Abchurch Lane,
London, EC4N 7BW
www.rpsl.org.uk

SPINK

WHERE HISTORY IS VALUED

Spink is proud to continue being part of the Tomorrow's Royal campaign by holding some of our most important and prestigious auctions, at the new HQ of the Royal Philatelic Society of London.

We believe this is the start of a new era in philately, as well as a significant development in philatelic co-operation for RPSL and Spink London.

With the RPSL now at the forefront of global philately, a development we hope, will benefit all philatelists for many years to come.

Do join us, in the heart of the city of London, for the beginning of a great philatelic adventure.

The first of our auctions to be held at this magnificent venue will be:

17th September 2019
The 'Bartica' Collection of British Guiana Ship Type Issues
The 'Lionheart' Collection of Great Britain and British Empire Part X

18th September 2019
The Camping Collection of Great Britain

Viewing for these auctions will be held at SPINK Stampex stand #122 and thereafter,
16th September on the second floor of the Royal Philatelic Society London.

LONDON | NEW YORK | HONG KONG | SINGAPORE | SWITZERLAND






#SPINK_AUCTIONS WWW.SPINK.COM

Surface Printed - *contd.*

1862-64



611

611 ★

3d. rose, **abnormal plate 3 with white dots**, BE with left margin, large part original gum; straight edge at top. An exceptionally fine example of this scarce abnormal. R.P.S. Certificate (1962) for the pair. S.G. 78, £45,000. Photo

£4,000-6,000

PROVENANCE:

Joseph Silkin, June 1971 (pair BE-BF)

One sheet plus a part sheet (columns A to E) was discovered at Somerset House and line perforated. Of these original stamps 38 have been recorded unused and 17 used



612



613

612 ★

4d. bright red, OC, unused with some gum. Fresh appearance. S.G. 79, £2200. Photo

£150-200

613 ★

4d. pale red, OC, unused with some gum; there is a light vertical bend. Photo

£100-120



614



615



616

- 614 ★ 6d. lilac, plate 3, OE-OG horizontal strip of three with wing margin at left and interpanneau margin at foot, large part original gum; there is a horizontal crease running through all three stamps and centred a little high. A good positional block showing some of the margin inscription. Photo £250-300
- 615 ★ 6d, lilac, plate 3, PK, unused without gum; a fraction off-centre. Fresh. S.G. 84, £2250. Photo £100-120
- 616 ★田 6d. lilac, plate 4, KA-LB block of four part original gum; there is some light ageing at the foot of this block, with very fine centring. Attractive. S.G. 85, £13,000. Photo £800-1,000



617

- 617 ★田 6d. lilac, plate 4, KC-ND in two adjoining blocks of four, large part original gum, with wing margin at right, there are a few spots which show through to the face. Well centred. Photo £1,000-1,200

Surface Printed, 1862-64 - *contd.*



618



619



620

- | | | |
|-------|--|----------|
| 618 ☺ | 9d. bistre overprinted "SPECIMEN" type 6, NB, part original gum. S.G. J92s, £725. Photo | £80-100 |
| 619 ★ | 9d. straw, TF with watermark error, three roses and a thistle , unused with some gum; there is a slight thin near the top left corner, good centring and fresh appearance. Rare. S.G. 87d, £12,000. Photo | £600-800 |
| 620 ★ | 1/- deep green. FA, part original gum, there is a diagonal crease across the top right corner; fair centring and very fresh appearance. S.G. 89, £4800. Photo | £100-120 |



621

- | | | |
|-------|--|--------|
| 621 ☒ | 1863 (6 Nov.) a very neat envelope to U.S.A. bearing 1/- green, BB, tied by Catford "71" duplex and New York Paid transit c.d.s. (19.11) in red with "3/CENTS" accountancy handstamp in red alongside. A charming cover. Cat £450. Photo | £70-90 |
|-------|--|--------|

1865-67 Watermark Spray of Roses



622



623

622 ★ 4d. deep vermilion, plate 11, CJ, unused with traces of gum; well centred and in a vivid, bright shade. S.G. £650. Photo £100-120

623 ○田 4d. vermilion, plate 11, LD-ME block of four cancelled by neat Barnsley 1871 (26 Dec.) c.d.s.; there are a few slightly short perfs. S.G. 94, £525. Photo £80-100



624



625



626

624 ★田 4d. vermilion, plate 12, CK-DL block of four with right sheet margin, inverted watermark, part to large part original gum; centred low and there is a crease in the margin which just affects DL. Cat. £3100. Photo £400-500

625 ○田 4d. vermilion, plate 12, GH-HI block of four cancelled by good strikes of Douglas, Isle of Man 1872 (20 May) c.d.s. Well centred, fresh and fine. Cat. £500. Photo £100-120

626 ★田 4d. vermilion, plate 12, OJ-PK block of four, large part original gum; inverted watermark, some split perfs. at left. well centred. Photo £300-400

Surface Printed, 1865-67 - *contd.*



627

627 ○B

4d. pale vermillion, plate 13, QA-RC block of six, cancelled by neat strikes of Gresham House 1873 (26 May) c.d.s.; rejoined horizontally. Attractive. Photo

£100-120



628

628 ★田

4d. vermillion, plate 14, OG-PH wing margin block of four, large part original gum. There are a couple of perf. reinforcements, well centred and fresh. Cat. £3750. Photo

£500-600

1867-80 Watermark Spray of Rose



629



631



632

- 629 ○田 3d. rose, plate 7, AI-BJ block of four with wing margin at left, neatly cancelled by Waterford 1872 (13 May) c.d.s.; a few irregular perfs., etc. S.G. 103, £500. Photo £80-100
- 630 ○田 3d. rose, plate 7, GA-JD block of sixteen with wing margin at right, cancelled by North Shields 1872 (21 Feb.) c.d.s.; blunt corner perf. lower left corner, otherwise in very fine condition for such a large block £300-400
- 631 ○田 3d. pale rose, plate 7, PK-QL block of four cancelled by light strikes of Liverpool 1872 (21 Mar.) c.d.s.; centred a little low. A good block. Photo £80-100
- 632 ○田 3d. pale rose, plate 8, DC-ED block of four with wing margin at right, neatly cancelled by light Mark Lane 1872 (23 Sept.) c.d.s. Cat. £425. Photo £80-100
- 633 ○田 3d. rose, plate 8, LI-MJ block of four with wing margin at left, cancelled by good strikes of Sheffield c.d.s. dated 1872 (13 Aug.); a couple of irregular perfs. at left £80-100



634



635



636

- 634 ○田 3d. pale rose, plate 8, NK-OL block of four cancelled by light strikes of Barnstaple c.d.s. dated 1872 (23 July). Attractive. Photo £80-100
- 635 ○田 3d. rose, plate 8, QE-RF block of four with wing margin at left, neatly cancelled by light strikes of Abbeyfeale c.d.s. dated 1872 (7 Aug.). Fresh and fine; a good Irish postmark. Photo £100-120
- 636 ○田 3d. pale rose plate 8, SK-TL block of four cancelled by central strikes of Wet Dock, Ipswich c.d.s. dated 1872 (7 Sept.); fine. Photo £80-100
- 637 ○田 3d. rose, plate 10, NA-OB block of four cancelled by neat and light strikes of Blackpool c.d.s. dated 1873 (23 July). Cat. £950 £150-180

Surface Printed, 1867-80 - *contd.*



638



639



640

- 638 ★田 6d. mauve, plate 8, FB-GC block of four, part to large part original gum; the block has split into two and partly rejoined; well centred. S.G. 109. Photo £400-500
- 639 ★ 6d. mauve, plate 8, FK, part original gum; centred a little low; fresh. Photo £100-120
- 640 ★田 6d. mauve, plate 8, QC-RD wing margin block of four, large part original gum; centred high, OC diagonal crease and with some split and reinforced perfs. Photo £400-500



641



642

- 641 ○田 6d. mauve, plate 9, GE-HF wing margin block of four neatly cancelled by Temple Bar c.d.s. dated 1872 (18 Mar.). Cat. £575. Photo £100-120
- 642 ○田 10d. pale red-brown, MA-NB block of four cancelled by Seething Lane c.d.s. dated 1872 (1 Mar.). S.G. 113, £2400. Photo £300-400
- 643 ○ 10d. pale red-brown, MG fine used with neat Slough c.d.s. dated 1872 (9 Sept.). S.G. 113, £400 £70-90
- 644 ○田 1/- green, plates 4 and 5 in blocks of four; plate 4 FE-GF wing margin block with neat Dundee c.d.s. (a scarce plate to find with c.d.s.); plate 5 AJ-BK block with light Edinburgh c.d.s.; a few trivial imperfections. An attractive pair of blocks with similar postmarks £80-100



645



647

- 645 ◻ 2/- deep blue, DE-EF wing margin block of four cancelled by Gresham House c.d.s. dated 1872 (5 Sept.); ink line at top, otherwise fine. Photo £240-280
- PROVENANCE:
John O. Griffiths, February 1981
- 646 ○ 2/- deep blue, IF-IH horizontal strip of three with wing margin at right, cancelled by 1872 Gresham House c.d.s.; light vertical bend at left £80-100
- 647 ◻ 2/- deep blue, RE-SF wing margin block of four cancelled by Newcastle-on-Tyne c.d.s. dated 1872 (1 Mar.); fine and attractive. S.G. 119, £1400. Photo £240-280



648



649



650

- 648 ○ 2/- brown, BE with wing margin, cancelled by a part strike of barred oval across the lower corner leaving a clear profile; a few short perfs. at right. S.G. 121, £4200. Photo £600-800
- 649 ★ 2/- brown, JH with reperfected wing margin at right, unused and regummed. Photo £500-1,000
- 650 ○ 2/- brown, ND with wing margin and neatly cancelled by "C30" barred oval of Valparaiso (Chile); one short perf. at foot. A good stamp used abroad. S.G. Z87. Photo £700-900

Surface Printed, 1867-80 - *contd.*



651

651 ☒

1868 (19 Nov.) large envelope registered from the Austrian Embassy to Vienna bearing 2/- dull blue, 1/- green plate 4 (wing margin cut off) with 1865-67 4d. plate 10 tied by London NW 1 barred circles with registered despatch c.d.s. struck in red with "PD" in oval; the reverse with the red wax seal of the ambassador and faint arrival datestamp. A good 3/4d. franking. Photo

£150-200






652

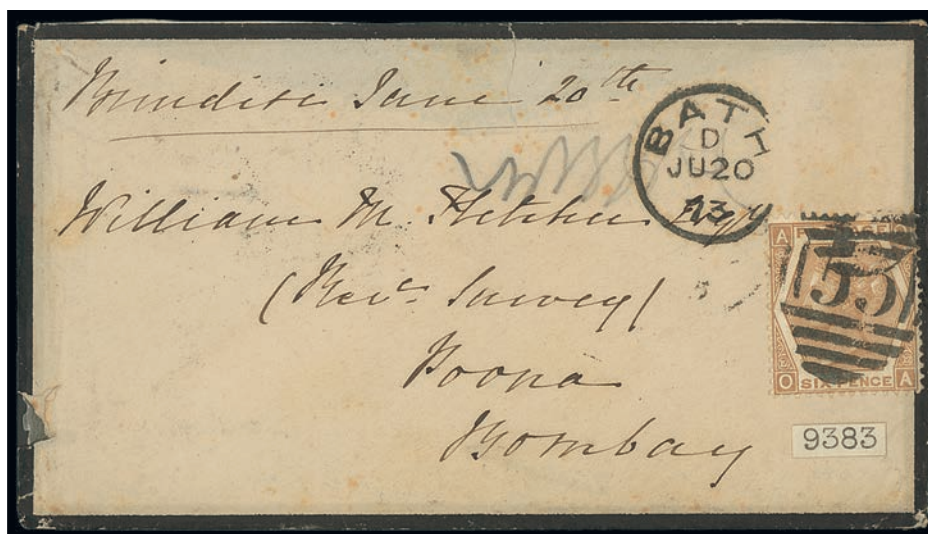
652 ☒

1874 (9 Dec.) envelope to an officer in Fort Frederic in Ceylon "Via Southampton" bearing 9d. pale straw cancelled by Charing Cross duplex, readdressed "Gone, try Malta", the reverse with Galle Paid c.d.s. (5.3) in red and Malta c.d.s. (30.3); part of the flap is missing. A neat cover. Photo


£70-90

1872-73

- 653 ○ 6d. chestnut, plate 11, AB-CD wing margin block of nine cancelled by neat and light strikes of Hope St. Glasgow c.d.s. for 1872 (21 June); there are a few paper splits caused by the postmark. Well centred and fresh £100-120
- 654 ○ 6d. chestnut, plate 11, CI-DJ wing margin block of four cancelled by Shelbourne Hotel, Dublin c.d.s. dated 1872 (14 June); fine and attractive. Cat. £425 £80-100
- 655 ○ 6d. pale chestnut, plate 11, KA-LB block of four neatly cancelled by Leeds c.d.s. dated 1872 (27 Sept.); well centred and fine. A very desirable block £80-100



656

- 656  6d. pale chestnut, **abnormal plate 12**, OA on mourning cover to Bombay via "Brindisi" and cancelled by Bath "53" duplex dated 1873 (20 June), the reverse with London (20.6), Sea Post Office (27.6) and Poona arrival (3.7) plus an offset of the despatch duplex. One stamp is missing from the cover to make up the 9d. rate and the flap is missing. A rare and highly important cover as there are only four recorded covers. B.P.A. Certificate number 9383 (undated). S.G. 124a. Photo £1,000-1,200
- PROVENANCE:
Joseph Silkin, June 1971

Surface Printed - *contd.*

1867-83 High Values



657

657 ⑩

Die Proof: 5/- in black on matt card, with blank plate number and letter squares. Without endorsements and produced for the 1871 London International Exhibition. Fine. Cat. £5000. Photo

£1,500-1,800

1867-83 High Values, Watermark Maltese Cross



658



659

658 ⑤

5/- rose, plate 1, HC handstamped "SPECIMEN" type 2, without gum; small wrinkle or crease at left. S.G. J121t, £1000. Photo

£100-150

659 ⑤

5/- rose, plate 1, DG handstamped "SPECIMEN" type 6, part to large part original gum, a couple of typical gum wrinkles. S.G. J121t, £1000. Photo

£150-200



660

660 ★

5/- rose, plate 1, EF, large part original gum; quite well centred, small defect near the lower right corner. Fresh appearance. S.G. 126, £9500. Photo

£400-500



661

661 ○

5/- rose, plate 1, CB-CC horizontal pair, cancelled by very neat strikes of Gresham House 1872 c.d.s.; fresh colour and quite well centred. Exceptional. S.G. 126, £1350. Photo

£150-180

662 ○田

5/- pale rose, plate 1, EH-FI block of four cancelled by London "26" barred oval of Beckenham; centred low but in good condition for a postally used block. Cat. £4000. Photo

£400-500



662



663

663 ○

5/- rose, plate 1, FC lightly cancelled by part 1872 c.d.s.; fresh colour and quite well centred. Photo

£70-80

664 ○田

5/- rose, plate 1, GA-HB block of four cancelled by 1872 Fenchurch St. c.d.s., centred low and left. Fresh and fine, a desirable block. Cat. £4000. Photo

£400-500



664

Surface Printed, 1867-83 High Values, Watermark Maltese Cross - *contd.*



665



666

- | | | |
|-------|---|----------|
| 665 ☉ | 5/- pale rose, plate 2, FF overprinted "SPECIMEN" type 9, without gum; centred a little low. S.G. J122s, £1600. Photo | £150-180 |
| 666 ○ | 5/- pale rose, plate 2, AF cancelled by a very neat and central strike of 1881 Aberdeen c.d.s.; light diagonal crease. Attractive. S.G. 127, £1500. Photo | £80-100 |
| 667 ○ | 5/- pale rose, plate 2, AG with a neat and central strike of 1880 Bolton c.d.s.; faint blue crayon mark and a short perf. at foot | £50-60 |



668

- | | | |
|-------|--|--------------|
| 668 ★ | 10/- greenish grey, FJ, part original gum; centred low and with a couple of very slight thin spots and gum wrinkle. A good example of this very scarce stamp. S.G. 128, £50,000. Photo | £4,000-5,000 |
|-------|--|--------------|



669



670



671

- | | | |
|-------|--|------------|
| 669 ○ | 10/- greenish grey, CJ cancelled by a very light strike of 1882 Elgin c.d.s.; centred high and right but still a very attractive example of this stamp. S.G. 128, £3200. Photo | £600-800 |
| 670 ○ | 10/- greenish grey, GI. cancelled by a very light strike of the registered barred oval; centred a little to the right. A very good example of this stamp with postal cancellation. Photo | £500-600 |
| 671 © | £1 brown-lilac overprinted "SPECIMEN" type 9, BG, without gum. S.G. J126s, £6000. Photo | £800-1,000 |



672

- | | | |
|-------|---|----------------|
| 672 ★ | £1 brown-lilac, GF, large part original gum; centred high and right, fresh colour and a very good example of this stamp. S.G. 129, £75,000. Photo | £20,000-24,000 |
|-------|---|----------------|

Surface Printed, 1867-83 High Values, Watermark Maltese Cross - *contd.*



673

673 ○

£1 brown-lilac, BH with a neat and central strike of 1882 Vere Street c.d.s.; centred a little low and right. A charming example of this high value. S.G. 129, £4500. Photo

£800-1,000



674

674 ○

£1 brown-lilac, DJ cancelled by a neat strike of 1881 London W.C. c.d.s.; centred to the right. Rich colour and attractive. Photo

£800-1,000



675

675 ○

£1 brown-lilac, EF cancelled by a light strike of 1881 London W.C. c.d.s.; centred low and with a few minor perf. tones on the reverse. Good colour and appearance. Photo

£600-800

1867-83 High Values, Watermark Anchor, Blued Paper



676

- 676 ★ 5/- rose, plate 4, FA, unused with some gum; thin spot at top of watermark. Well centred and good appearance. S.G. 130, £35,000. Photo £800-1,000



677

- 677 © £5 orange, DE, overprinted "SPECIMEN" type 9, part original gum; small internal wrinkle. Fine appearance. S.G. J128s, £3500. Photo £800-1,000



The Royal Philatelic Society London

We are pleased to receive proposals for membership of the Society which is through election.

If you are interested in membership, please contact us at secretary@rpsl.org.uk

If you have no proposer or seconder, please contact us for further information.

Tel: 00 44 (0)20 7486 1044 | www.rpsl.org.uk

The world's oldest and most prestigious philatelic society, established 1869, with over 2,000 members in more than 70 countries.

Extensive premises in London's West End house the Society's superlative library, plus Museum and Archive, and provide first-class meeting facilities.

The Society's Online Catalogue provides access to over three-quarters of a million philatelic indexes to members world-wide.

A fascinating programme of displays and meetings throughout the year, supplemented by regional meetings and gatherings at major international events.

The Society publishes ten times a year its own journal, *The London Philatelist*, containing articles of outstanding philatelic research, in addition to publishing major philatelic works.

We are honoured to have Her Majesty Queen Elizabeth II as our Royal Patron

Surface Printed - *contd.*

1867-83 High Values, Watermark Anchor, White Paper



678

678 ○

5/- rose, plate 4, FE with a central strike of London barred oval; well centred. Good postal use. S.G. 134, £3800. Photo

£400-500



679

679 ○

£1 brown-lilac, FG cancelled by a neat strike of 1884 Hounslow Heath c.d.s.; well centred. S.G. 136, £7000. Photo

£1,000-1,200



680

680 ○

£1 brown-lilac, GE cancelled by 1884 registered oval. Good to fine. Photo

£800-1,000



681

681 ○

£1 brown-lilac, GF, cancelled by a neat and central strike of 1883 York St. Manchester c.d.s.; there is a light vertical crease but of fine appearance. Photo

£600-800



682

682 ©

£5 orange, CJ, overprinted "SPECIMEN" type 11, part original gum; light bend at left. Very fresh and fine appearance. S.G. J128t, £4500. Photo

£800-1,000



683

683 ★

£5 orange, CJ, part original gum; light crease at left. Superb fresh colour and appearance. S.G. 137, £12,500. Photo

£3,000-4,000

Surface Printed, 1867-83 High Values, Watermark Anchor, White Paper - *contd.*



684

684 ○

£5 orange, BL, cancelled by a neat strike of 1894 Glasgow c.d.s. Cat. £3500. Photo

£800-1,000



685

685 ○

£5 orange, CI-CJ vertical pair, each cancelled by a neat and central strike of 1902 Middlesbrough c.d.s.; small perf. reinforcement at left. Very fresh and fine appearance. A remarkable multiple. Photo

£1,800-2,000



686

686 ○

£5 orange, CL, cancelled by a very light and central strike of 1899 Plymouth c.d.s.; there is a part diagonal wrinkle at right. Most attractive. Photo

£700-900



687

687 ○

£5 orange, DJ cancelled by a light and central strike of 1900 Ipswich c.d.s.; fine and a most attractive example. Photo

£1,000-1,200



688

688 ○

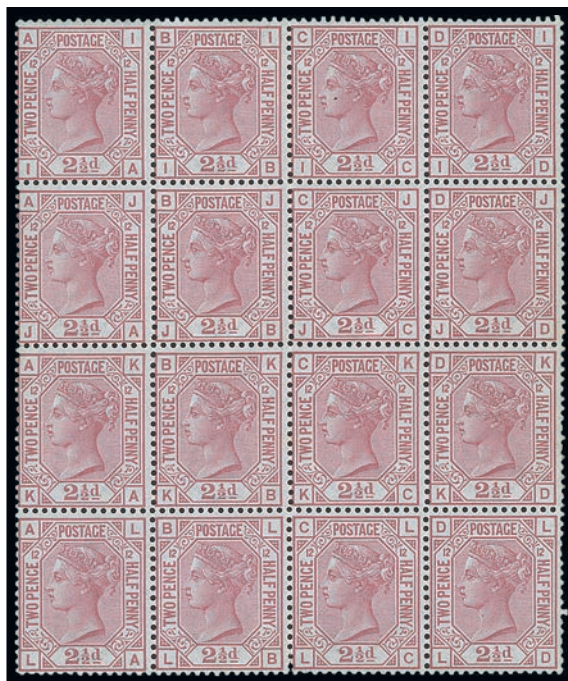
£5 orange, DH-DI vertical pair neatly cancelled by 1900 Chester c.d.s.; there is a vertical crease at left but still a fresh and attractive multiple. Photo

£1,200-1,500

PROVENANCE:
Joseph Silkin, June 1971

Surface Printed - *contd.*

1873-80 White Corner Squares



689

689 ★ ㊦

2½d. rosy mauve, plate 12, IA-LD block of sixteen, large part original gum; there are a few split perforations which do not detract from this magnificent block. S.G. 141, £12,800. Photo

£1,800-2,200



690

690 ㊦

2½d. blue, plate 17, DD-EE block of four overprinted "SPECIMEN" type 9, large part original gum; a few split perfs. and one stamp has been punctured by the Specimen overprint. S.G. J19s. Photo

£150-180



691

691 ㊦

2½d. blue, plate 17, EH-FI block of four handstamped "SPECIMEN" type 9, large part original gum; centred quite high. Fresh. Photo

£120-150



692

692 ★田

2½d. blue, plate 17, IG-JH block of four, unused with gum which has been redistributed; small discolouration in the lower right corner and centred left. S.G. 142, £3000. Photo

£300-350




693


693 ★田

3d. rose, plate 11, HA-IB block of four, part original gum; well centred and fresh. S.G. 143, £2600. Photo

£350-400



The Royal Philatelic Society
London HQ
15 Abchurch Lane,
London, EC4N 7BW
www.rpsl.org.uk



WHERE HISTORY IS VALUED

Spink is proud to continue being part of the Tomorrow's Royal campaign by holding some of our most important and prestigious auctions, at the new HQ of the Royal Philatelic Society of London.

We believe this is the start of a new era in philately, as well as a significant development in philatelic co-operation for RPSL and Spink London.

With the RPSL now at the forefront of global philately, a development we hope, will benefit all philatelists for many years to come.

Do join us, in the heart of the city of London, for the beginning of a great philatelic adventure.


The first of our auctions to be held at this magnificent venue will be:

17th September 2019
The 'Bartica' Collection of British Guiana Ship Type Issues
The 'Lionheart' Collection of Great Britain and British Empire Part X

18th September 2019
The Camping Collection of Great Britain

Viewing for these auctions will be held at SPINK Stampex stand #122 and thereafter, 16th September on the second floor of the Royal Philatelic Society London.

LONDON | NEW YORK | HONG KONG | SINGAPORE | SWITZERLAND



#SPINK_AUCTIONS WWW.SPINK.COM

Surface Printed, 1873-80 - *contd.*



694

694 ★[®]

3d. rose, plate 14, ME-SH double wing margin block of twenty eight with dividing interpanneau margin showing the margin inscription, large part to full original gum. There are a few perf. reinforcements, a horizontal crease through the large interpanneau margin and the colour is a little pale. A spectacular block. Photo

£3,000-4,000



695

695 ★ 

3d. pale rose, plate 15, FI-GK wing margin block of six with interpanneau margin at top showing the margin inscription; large part original gum; centred a little low. Photo

£450-500

Surface Printed, 1873-80 - *contd.*



696



697

696 ○田

3d. pale rose, plate 15, IB-JC block of four, neatly cancelled by 1874 (7 Sept.) Springbank c.d.s.; one short perf. at top, otherwise fresh and fine. Cat. £425. Photo

£100-120

This plate was put to press on 9th June 1874, the postmark is dated 7th September so represents quite early usage

697 ★田

3d. pale rose, plate 17, FE-GF wing margin block of four, large part original gum; a couple of perf. reinforcements, centred a little low. Cat. £3000. Photo

£400-500



698



699

698 ★田

6d. grey, plate 14, HI-IJ wing margin block of four, part to large part original gum; very fresh appearance. S.G. 147, £3000. Photo

£400-500

699 ★田

6d. grey, plate 15, CE-DF wing margin block of four, large part original gum. Cat. £3000. Photo

£400-500



700

700 ★田

6d. grey, plate 16, FF-GG block of four, part original gum. Cat. £3000. Photo

£300-400



701

701 ★B

6d. grey, plate 16, SI-TL wing margin block of eight, with full original gum; one perf. reinforcement. A good block which has the watermark centred high. Photo

£800-1,000

Surface Printed, 1873-80 - *contd.*



702



703

702 田

4d. plate 15 imperforate colour trial in pale olive-brown, RK-SL right margin block of four with full original gum. Cat. £1000. Photo

£200-240

703 ★

4d. sage-green, plate 15, CG with wing margin, large part original gum. S.G. 153, £1400. Photo

£180-220



704



705



706

704 ★

8d. light orange, BE-BF horizontal pair, part original gum; centred high and right. BF should be one of the wing margin positions though the perfs. on the right are in good alignment with the others. S.G. 156, £3600. Photo

£250-300

705 ★田

8d. orange, IG-JH wing margin block of four, part original gum; the wing margin with straight edge, some perf. reinforcements and light crease on the lower pair, A scarce multiple. Cat. £9750. Photo

£1,000-1,200

706 ★

8d. orange, SF-TF vertical pair with wing margin, large part original gum. There is a vertical row of line perfs. in the wing margin, well away from the stamps. Exceptionally fresh appearance. A desirable pair. Photo

£500-600

The perforation on some of the wing margins on this 8d. value have been a subject for debate; This pair clearly shows an extra line of perforation added, they are at a slight angle and stop before the top of SF. It would appear that these were, on occasion, added by the printers

1880-83 Watermark Crown



707



708



709

- | | | |
|--------|---|----------|
| 707 ☉田 | 2½d. blue, plate 23, SI-TJ block of four overprinted “SPECIMEN” type 9, with full original gum; there is a light vertical bend at right. S.G. J25s, £700. Photo | £100-120 |
| 708 ★田 | 2½d. blue, plate 23, BE-CF block of four, large part original gum. Cat. £2600. Photo | £300-350 |
| 709 ★田 | 3d. rose. plate 21, KE-LF top margin block of four, large part original gum; a couple of part hinge remainders, one in the top margin. S.G. 158, £3000. Photo | £350-400 |



710



711

- | | | |
|--------|--|----------|
| 710 ★田 | 3d. on 3d. lilac, CE-DF block of four, large part original gum. Fresh and fine. S.G. 159, £3000. Photo | £400-500 |
| 711 ★田 | 4d. grey-brown, plate 17, DG-EH block of four, large part original gum. Fine. S.G. 160, £2600. Photo | £300-350 |

Surface Printed, 1880-83 Watermark Crown - *contd.*



712



713

712 ○田

6d. grey, plate 18, EE-FF block of four, good used with light 1883 Greenock c.d.s. S.G. 161, £350. Photo

£100-120

713 ○田

6d. on 6d. lilac, MC-ND block of four cancelled by 1884 Mark Lane duplex. Fine and a good multiple. S.G. 162, £900. Photo

£140-180



714



715

714 ★

1/- orange-brown, plate 13, JG, large part original gum. S.G. 163, £875. Photo

£100-140

715 ★田

1/- orange-brown, plate 13, LC-MD block of four, large part original gum; has been sweated. Cat. £4500. Photo

£500-600

1880-81



Ex 716

716 ★

½d. to 5d. set of five with shades of ½d. and 2d., part to large part original gum; 5d. with light horizontal wrinkle. S.G.164-169, £1700. Photo

£200-240



717

717 ⑩

5d. die proof on glazed card (92x60mm) dated "5 AUG 80" in blue; fine. Cat. £1600. Photo

£400-500



718

718 ㊦

5d. indigo overprinted "SPECIMEN" type 9, in a left margin block of four, unmounted mint. S.G. K6s, £640. Photo

£150-200

Surface Printed - *contd.*

1883-84 High Values, Blued Paper



719

719 ★

10/- ultramarine, IF-IH horizontal strip of three with right margin, lightly mounted mint; there is a horizontal crease and a horizontal bend which run through all of the stamps. R.P.S. Certificate (1974). S.G. 177, £120,000.
An extraordinary and a very rare strip. Photo

£15,000-20,000

1883-84 High Values, White Paper



720

720 ○

2/6d. lilac, AF on blued paper from the white paper period, cancelled by a very neat strike of 1891 Chester Grand Stand c.d.s. Fine and a popular racing postmark. S.G. 179a, £3600. Photo

£300-400



721



722

721 ○田

2/6d. lilac, HG-IH block of four each neatly cancelled by 1889 Ebury St. Pimlico c.d.s. Very attractive. S.G. 178, £1100. Photo

£200-250

722 ○田

2/6d. lilac, HG-IH block of four neatly cancelled by 1897 Lombard St. c.d.s. Attractive. Photo

£200-250



723



724

723 ○田

2/6d. deep lilac, IA-JB block of four, each cancelled by a central strike of 1889 Liverpool c.d.s.; light horizontal wrinkle

£120-150

724 ○田

2/6d. deep lilac, IE-JH block of eight, each neatly cancelled by 1891 Cardiff Docks c.d.s.; there are a couple of perf. reinforcements. Very unusual to find a multiple of this size. Photo

£350-400

Surface Printed, 1883-84 High Values, White Paper - *contd.*



725



726

- 725 ○田 5/- rose, CG-DH block of four neatly cancelled by 1889 Queen's Square Belfast c.d.s.; light vertical crease at left and a few perf. reinforcements. S.G. 180, £1500. Photo £200-240
- 726 ○田 5/- crimson, DC-ED block of four, each cancelled by central 1886 Lincoln c.d.s.; horizontal crease through the upper pair and orange crayon mark across the top right corner. Photo £150-200



727



728

- 727 ○田 5/- crimson, DE-EF block of four in a rich colour cancelled by neat 1897 Dundee c.d.s.; light bend and perf. reinforcement at foot. Photo £200-240
- 728 ○田 5/- crimson, FA-GD block of eight each neatly cancelled by 1886 Lincoln c.d.s. A fine and scarce block. Photo £500-600

PROVENANCE:
'Maximus', May 1970

Note that this block joins the earlier block of four, lot 726, representing a very high value franking



729



730

- 729 ⑤ 10/- cobalt, ID overprinted "SPECIMEN" type 9, part original gum which has been redistributed. B.P.A. Certificate (1979). S.G. 182s, £3400. Photo £400-500
- 730 ⑤ 10/- cobalt, JC overprinted "SPECIMEN" type 9, unused and of good appearance. R.P.S. Certificate (1974) states, "creased and regummed". Photo £300-400



731

- 731 ⑤ 10/- ultramarine, DE overprinted "SPECIMEN" type 11, part original gum. S.G. K14s, £550. Photo £100-120



732

- 732 ★ ⑤ 10/- pale ultramarine, JE-KH right margin block of eight, large part original gum; there is a perf reinforcement between KF-KG and some light bends. A fresh and spectacular block. Cat. £25,500. Photo £3,500-4,500

Surface Printed, 1883-84 High Values, White Paper - *contd.*



733



734

733 ○田

10/- ultramarine, HE-IF block of four neatly cancelled by 1894 Longport c.d.s.; some reinforced perfs. at foot and traces of diagonal blue crayon. Attractive. S.G. 183, £3500. Photo

£350-450

Note that the date appears to be 1884 from a defective numeral

734 ○田

10/- ultramarine, ME-NF block of four, each cancelled by 1890 Royal Exchange, Manchester c.d.s.; there are a couple of minor wrinkles. A scarce multiple. Photo

£500-600

1884 Watermark Crowns



735

735 ★

£1 brown-lilac, GC unused with part original; gum; improved horizontal perforations. S.G. 185, £28,000. Photo

£1,400-1,600



736



737

736 ○

£1 brown-lilac, IB cancelled by a central strike of an indistinct c.d.s.; there is a surface scuff at right. Cat. £3000. Photo

£250-300

737 ○

£1 brown-lilac, QD cancelled by 1885 hooded London E.C. c.d.s.; faint age mark in centre; rich colour. Photo

£300-350

1888 Watermark Orbs



738

738 ★

£1 brown-lilac, GB, large part original gum; rich colour, centred a little high and right; there is a light bend. A good example of this stamp. S.G. 186, £60,000. Photo

£8,000-10,000



739

739 ★

£1 brown-lilac, IB, unused and regummed; there is a small thin patch. Well centred and fresh. Photo

£3,000-4,000



740

740 ○

£1 brown-lilac, LA with a central strike of 1889 Dover c.d.s. A fine and attractive example of this popular stamp. Cat. £4500. Photo

£800-1,000

1883-84 LILAC AND GREEN



Ex 741

Ex 742

Ex 743

- 741 ☉ ½d. to 1/- set of ten overprinted "SPECIMEN" type 9, part to large part original gum; 4d. small thin, otherwise a good set with good colours. Photo £180-220
- 742 ★ ½d. to 1/- set of ten, part to large part original gum; 9d. with part wrinkle, good colours. S.G. 187-196, £5000. Photo £900-1,000
- 743 ★ ½d. to 1/- set of ten, part to large part original gum. A good set. Photo £900-1,000



Ex 744



745

- 744 ○ ½d. to 1/- set of ten good to fine used with c.d.s.; good colours. Cat. £1600. Photo £180-220
- 745 ○ 6d, green, AK-DL block of eight cancelled by 1884 Belfast Donegal Square c.d.s. A good multiple. S.G. 194, £2200. Photo £250-300



746

746 ★

9d. green, DQ-DS horizontal strip of three, lightly mounted. A good strip. S.G. 195, £3750. Photo

£600-800



747

747 ○B

1/- green, AG-CH block of six cancelled by 1885 hooded London c.d.s.; stain spot on AG, BG small tear and a light vertical bend. Good colour and a scarce block. Photo

£150-200



The Royal Philatelic Society
London HQ
15 Abchurch Lane,
London, EC4N 7BW
www.rpsl.org.uk

SPINK

WHERE HISTORY IS VALUED

Spink is proud to continue being part of the Tomorrow's Royal campaign by holding some of our most important and prestigious auctions, at the new HQ of the Royal Philatelic Society of London.

We believe this is the start of a new era in philately, as well as a significant development in philatelic co-operation for RPSL and Spink London.

With the RPSL now at the forefront of global philately, a development we hope, will benefit all philatelists for many years to come.

Do join us, in the heart of the city of London, for the beginning of a great philatelic adventure.

The first of our auctions to be held at this magnificent venue will be:

17th September 2019
The 'Bartica' Collection of British Guiana Ship Type Issues
The 'Lionheart' Collection of Great Britain and British Empire Part X

18th September 2019
The Camping Collection of Great Britain

Viewing for these auctions will be held at SPINK Stampex stand #122 and thereafter,
16th September on the second floor of the Royal Philatelic Society London.

LONDON | NEW YORK | HONG KONG | SINGAPORE | SWITZERLAND







#SPINK_AUCTIONS WWW.SPINK.COM

1887-1900 JUBILEE

748 ★	½d. (both) to 1/- (both) set of fourteen, large part original gum. A fresh set. S.G. 197-214, £650	£100-120
749 ★	½d. (both) to 1/- (both) set of fourteen, part to large part original gum. A good set	£80-100
750 ○	½d. (both) to 1/- (both) set of fourteen, good to fine used	£50-60
751 ○	½d. (both) to 1/- (both) set of fourteen, good to fine used	£50-60
752 ☼田	2d. green and scarlet overprinted "SPECIMEN" type 9, in a block of four, fine with full original gum. S.G. 199s	£60-80
753 ☼田	9d. dull purple and bright blue in a lower left corner block of six, unmounted mint; a couple of minor gum wrinkles as usual. S.G. K38 (2)	£140-180



754



754 ○	10d. dull purple and carmine cancelled by a neat strike of Old Calabar River dated 1892 (4 Sept.). Fine and this value not catalogued used at this Nigerian post office. Photo	£100-120
-------	---	----------



755

755 ☼	1/- dull green with left sheet margin, unmounted mint. S.G. 211, £375. Photo	£80-100
-------	--	---------



756

756 ★田

1/- dull green in a block of four, large part original gum; some split perfs. at foot, otherwise fresh and fine. S.G. 211, £1200. Photo

£240-280



757

757 ⊕田

1/- green and carmine in a lower margin block of twelve, mounted in the margin only; a fresh and fine multiple. S.G. 214. Photo

£600-800



758

758 ⊕田

1/- green and carmine in a lower margin block of sixteen, one hinge remainder in the margin only; a few light tone spots. Photo

£800-900

1887-1900 Jubilee - *contd.*

A Spectacular Block of Four



759

759 ★田

£1 green, CC-DD right margin block of four, with full original gum; there is a vertical crease in the margin, a fine and desirable multiple. S.G. 212. Photo

£4,000-6,000



760

760 ★

£1 green, RD, large part original gum. Fresh. S.G. 212, £3500. Photo

£700-900



761

761 ○

£1 green, HB, cancelled by 1897 Lothbury Registered c.d.s.; fresh. Cat. £800. Photo

£120-150



762

762 ○

£1 green, HC-JC vertical strip of three, neatly cancelled by 1897 Threadneedle St. registered ovals, the lower stamp has been rejoined and with a light bend. JC is from plate 3 and does not show the frame break. A good multiple. Photo

£350-450

PROVENANCE:
Joseph Silken, June 1971

KING EDWARD VII

1902-10 De la Rue



Ex 763



Ex 764

763 ⑩	Imperforate Plate Proofs: 1d. green on white card, a group with top margin block of four, single and two singles double print. (7). Photo	£100-120
764 ⑩	Printer's Proofs on Buff Paper: a group with 1d. singles (2), 4d. orange block of four with double impression, 5d. lower margin block of four and 5/- with left margin. Also Q.V. Jubilee ½d. blue-green margin pair. (13). Photo	£150-200
765 ★	½d. (both) to 1/- set of fifteen, fine mint	£120-150
766 ★	½d. (both) to 1/- set of fifteen, fine mint	£120-150
767 ○	½d. to £1 set of nineteen, good to fine used; most with c.d.s. cancellations	£200-240
768 ★	½d. pale yellowish green, a complete booklet pane with St. Andrew's cross, large part original gum; good perfs. all round. S.G. 218b, £700	£120-150
769 ㊦	10d. slate-purple and carmine, ordinary paper, block of four, unmounted mint. S.G. 255	£200-250
770 ★	2/6d. lilac, lightly mounted mint. S.G. 260, £275	£60-80



771



772

- 771 ★ 10/- ultramarine, large part original gum; fresh and fine. S.G. 265, £1000. Photo £250-300
- 772 ★ 10/- ultramarine, large part original gum. Photo £200-250



773



774

- 773 ★ £1 dull blue-green, large part original gum. S.G. 266, £2000. Photo £500-600
- 774 ○ £1 dull blue-green, good used with 1905 Guernsey c.d.s. (2). Cat. £825. Photo £100-150

1911 Harrison & Sons

- 775 ★ An unused selection with perf.14 set of five with additional ½d. and 1d. with inverted watermark (2), perf.15x14 set of five, part to large part original gum. (13) £100-120
- 776 ⊕田 Perf.14: 1d. rose-red **inverted watermark** in a block of four with booklet margin, unmounted mint; with good perfs. all round. S.G. 272Wi, £360 £80-100

King Edward VII - *contd.*

1911-13 Somerset House

- 777 ★ 5d. dull reddish purple and bright blue in a lower right corner strip of three showing the 1912 date cuts and with the variety broken 1st and 2nd harp strings (head plate 4b, R.20/11) and the damage to the right hand duty tablet (duty plate 5, R.20/12), large part original gum. A good positional; block. S.G. M30 (2)c, g £60-80



778

- 778 ★ 2/6d. dull greyish purple, large part original gum. S.G. 315, £950. Photo £120-150
- 779 ★ 2/6d. dull reddish purple, lightly mounted. S.G. 316, £300 £70-90
- 780 ★ 5/- carmine, lightly mounted. S.G. 318, £425 £80-100



781



782

- 781 ○ 10/- blue used with a neat strike of 1912 No.70 Oxford St. (Oxford House) c.d.s. S.G. 319, £600. Photo £120-150
- 782 ○ 10/- blue well cancelled by 1912 Guernsey c.d.s. Photo £100-120



783

783 ★

£1 deep green, lightly mounted. S.G. 320, £2000. Photo

£700-900



784

784 ★

£1 deep green with lower left corner margins, part original gum with some gum disturbance around large hinge mark. Photo

£500-600



785

785 ★

£1 deep green in a vertical pair, mounted on the top stamp only, which also has a horizontal crease, the lower stamp fine unmounted mint. Photo

£1,200-1,500



786

786 ○

£1 deep green, good to fine used with 1912 Guernsey c.d.s. Photo

£120-150

KING GEORGE V

1912-24 Watermark Royal Cypher

787 ⑤

½d. green and 1d. red overprinted "CANCELLED" type 24, each in a horizontal strip of three, unmounted mint with good perfs. S.G. N14v, N16w

£120-150



788

788 ★ ⑥

½d. green in a top right corner block of six showing a dramatic **diagonal paper fold** prior to perforation; large part original gum; some split perfs. and hinge reinforcement. Photo

£100-150



789

789 ⑩

2d. intense bright orange, die I, **inverted watermark**, unmounted mint; there is some light gum ageing. A desirable example of this scarce shade. With copy of Philatelic Expertising certificate (1998). S.G. N19 (9). Photo

£200-300

1913 Watermark Multiple Royal Cypher

790

A selection with ½d. and 1d. mint (3), one pair with clipped perfs as side, ½d. coil join pair and ½d. and 1d. used. S.G. 397-398. (10)

£300-400

Seahorses

1913 Waterlow

- 791 ⑩ 2/6d. sepia-brown, rough imperforate plate proof showing vertical paper wrinkle prior to printing £50-80



792



793



794

- 792 ★ 2/6d. sepia-brown, large part original gum; centred a fraction low and right. S.G. 400, £300. Photo £80-100

- 793 ★ 2/6d. deep sepia-brown, large part original gum; small adherence on the reverse. Well centred and good perfs. S.G. 399, £400. Photo £100-120

- 794 ★ 5/- rose-carmine, lightly mounted. S.G. 401, £625. Photo £150-180



795



796

- 795 ★ 5/- rose-carmine, large part original gum. Photo £150-180

- 796 ⑤ 10/- indigo-blue overprinted "SPECIMEN" type 26, large part original gum; a couple of short perfs. at left and light gun toning. S.G. N69t, £1100. Photo £150-180

King George V, Seahorses, 1913 Waterlow - *contd.*



797

797 ★

10/- indigo-blue, with left margin, large part original gum; good colour and perfs. S.G. 402, £1000. Photo

£250-300



798

798 ★

10/- indigo-blue, lightly mounted mint; well centred and good perfs. Dealer's guarantee handstamp on the reverse. Photo

£250-300



799

799 ★

10/- indigo-blue, lightly mounted mint with wrinkly gum; well centred. Photo

£250-300



800

800 ★

10/- indigo-blue, lightly mounted mint; well centred. Photo

£250-300



801

801 ○

10/- indigo-blue, good to fine used with a central strike of 1913 Guernsey c.d.s.; centred a little low. Cat. £475. Photo

£120-150



802

802 ★

£1 green, large part original gum; good centring. S.G. 403, £2800. Photo

£500-600



803

803 ○

£1 green cancelled by a neat and central strike of 1914 Jersey c.d.s.; centred a little high. Cat. £1400. Photo

£300-400



804

804 ○

£1 green good used with 1914 registered oval cancellations; well centred. Photo

£250-300



805

805 ⊕

£1 deep green, with right margin, unmounted mint, centred a little high; strong colour and good perms. S.G. N72 (2), £6000. Photo

£1,200-1,500

King George V, Seahorses, 1913 Waterlow - *contd.*



806



807

- 806 ★ £1 dull blue-green, large part original gum; centred a little high and left and there is a light internal wrinkle. S.G. 404, £2800. Photo £400-500
- 807 ○ £1 dull blue-green used with a light and central c.d.s. (unclear lettering) well centred and attractive. Cat. £1600. Photo £350-450

1915 De la Rue



808



809

- 808 10/- in a light blue shade in a vertical pair, large part original gum, each stamp with faint "1.11.17" datestamp across each head; the stamps are centred high. An unusual pair, it is not known why these datestamps were applied, possibly for display purposes. These stamps are offered on their merits. Photo £400-600
- 809 ○田 10/- blue in a block of four cancelled by 1918 rubber London c.d.s.; horizontal crease at foot. B.P.A. Certificate (1998). Photo £500-600

1918-19 Bradbury



Ex 810

- 810 ★ 2/6d. to 10/- set of three, lightly mounted or unmounted mint; 2/6d. and 10/- with part top margin. An attractive set. S.G. 413a-417. Photo £250-300



Ex 811

- 811 ★ 2/6d. to 10/- in a range of shades, with 2/6d. (5), 5/- (2) and 10/- (2), large part original gum. A good group. (9). Photo £600-800



812



813

- 812 ★ 10/- dull blue, part to large part original gum; one short perf. at right. S.G. N71 (1), £475. Photo £100-120

- 813 ⊕ 10/- dull grey-blue with lower right corner margins, mounted in the margin only; some very light even gum ageing. A good positional stamp. S.G. 417, £850. Photo £160-200

King George V - *contd.*

1924-26 Block Cypher



814

814 田

1/2d. green in a lower left corner block of four control "Q 32" showing **paper fold variety** prior to perforating, unmounted mint. Spectacular. Photo

£100-150



Ex 815

815 ★

1 1/2d. red-brown variety **tête-bêche pair**, three pairs including a block of four, large part original gum but looking rather tired. S.G. 420a, £1500. Photo

£220-280



Ex 816

816 ⑤

A small group of imperforate horizontal pairs overprinted "SPECIMEN" type 23 with 1d. scarlet, 10d. turquoise-blue and 1/- bistre-brown, lightly mounted. 10d. and 1/- with left sheet margin. Cat. £780. Photo

£200-250

1929 Postal Union Congress



817

817 ☼田

2½d. blue variety **watermark inverted** in a top right corner block of four, unmounted mint; there are a couple of light tone patches on the reverse. S.G. 427wi, £15,000. Photo

£2,000-2,500



Ex 818

818 ★田

½d. to 2½d. set of four variety **watermark inverted**, each value in a block of four, lightly mounted or unmounted mint; low values with the booklet margins and good perms., 2½d. with a light gum bend and a couple of very faint age marks. A good set. Photo

£1,800-2,400

819 ☒

½d. to 2½d set of four on registered **first day cover** from Middlesbrough to Farnham, cancelled by "10 MY 1929" c.d.s.; the envelope with a few tone marks. Cat. £675

£100-150

King George V, 1929 Postal Union Congress - *contd.*



820



821



822

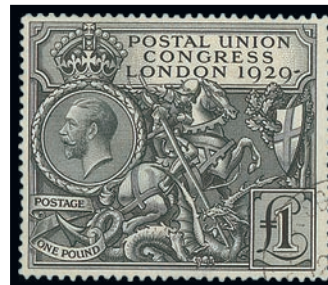
- | | | |
|-------|---|----------|
| 820 ☉ | £1 black, unmounted mint; some very light even gum ageing. S.G. 438. Photo | £240-280 |
| 821 ☉ | £1 black, unmounted mint; some very light even gum ageing. Photo | £240-280 |
| 822 ☉ | £1 black, unmounted mint; with lower margin; some very light even gum ageing. Photo | £240-280 |



823



824



825

- | | | |
|-------|---|----------|
| 823 ★ | £1 black, lightly mounted mint. Photo | £200-240 |
| 824 ○ | £1 black fine used with a neat and central strike of c.d.s.; centred a little left. Photo | £150-180 |
| 825 ○ | £1 black fine used with a neat strike of c.d.s. across a lower corner. Photo | £150-180 |



826

826 ○

£1 black used with a central strike of violet London Air Mail c.d.s. and showing a part strike of the German flugpost cancellation in red across the lower corner. Photo

£120-150



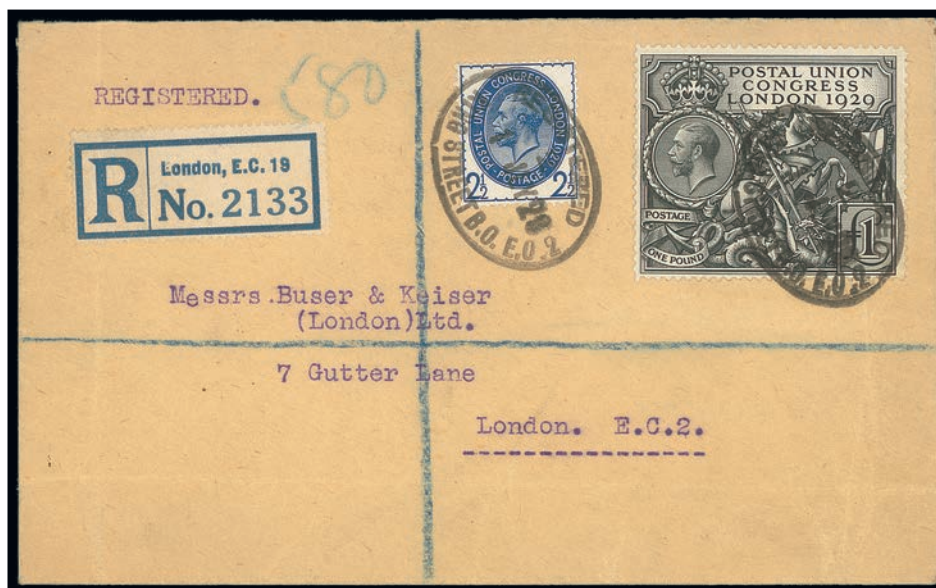
827

827 ○田

£1 black in a left margin block of four neatly cancelled by black c.d.s.; a fine and attractive block. Photo

£700-900

King George V, 1929 Postal Union Congress - *contd.*



828

828 ☒

£1 black used on local London registered cover with 2½d. blue, tied by 1929 (1 July) registered oval; the envelope has some light folding creases, one which runs through the £1 stamp. A scarce cover nevertheless. Photo

£150-200

1935 Silver Jubilee



829

829 ★

2½d Prussian blue, the **error of colour**, large part original gum; there is a tiny thin patch. A very collectable example of this popular stamp. R.P.S. Certificate (1973). S.G. 465a, £12,000. Photo

£2,000-3,000

OFFICIALS

Inland Revenue



830

830 ★

Issues of 1880-81: 6d. grey, plate 18, BA, part to large part original gum. S.G. O4, £575. Photo

£100-120



831

831 ○

— 6d. grey, plate 18, MA-ND block of eight, cancelled by indistinct barred oval postmarks. good to fine. An attractive multiple. Cat. £2000. Photo

£250-300



832

832 ★

Issues of 1884-88: 5/- rose on white paper, ME, part to large part original gum; there are two horizontal creases and an old hinge remainder. R.P.S. Certificate (1992) which states “toned” which appears to refer to the fact that this stamp is not fresh. S.G. O9, £12,000. Photo

£1,000-1,200

Officials, Inland Revenue - *contd.*



833



834

- 833 ★ Issues of 1884-88: 5/- rose on white paper, NE, part original gum; with a couple of light creases and some soiling. B.P.A. Certificate (1977). Photo £800-1,000
- 834 ○ — 5/- rose, JD used with a very small part c.d.s. at left; there is a thin spot by the stop of “R” and a light vertical crease. Wenvoe Certificate (2019). Cat. £2500. Photo £200-300



835

- 835 ★ — 10/- ultramarine, AC variety raised stop after “R”, large part original gum; there are a couple of internal wrinkles. Wenvoe Certificate (2019). S.G. O10a, £12,500. Photo £2,000-2,500



836

- 836 ○ — 10/- ultramarine, GF cancelled by a neat strike of 1896 Cardiff c.d.s.; improved perforations at left and vertical crease at right. Wenvoe Certificate (2019). Cat. £3750. Photo £250-300



837

837 ○

— £1 brown-lilac, watermark Crowns, FA of unused appearance; with faults including perf. thin at top and surface abrasion at foot. Friedl Certificate (1962), Wenvoe Certificate (2019) stating “used and cleaned”. S.G. 11. Photo

£800-1,000



838

838 ★

— £1 brown-lilac, watermark orbs, SD unused and regummed; some minor creasing at left. Fresh appearance with good colour. Wenvoe Certificate (2019). S.G. O12, £85,000. Photo

£7,000-9,000

Officials, Inland Revenue - *contd.*



839

839 ○

Issues of 1887-92: £1 green, JC from plate 3 without the frame breaks, cancelled by a neat strike of 1896 Sunderland c.d.s.; with blue crayon mark across the upper left corner and perfs. slightly improved at top; rich colour. S.G. O16, £2500. Photo

£200-250



840

840 ○


Issues of 1902-04: 1/- dull green and carmine, fair to good used with light Manchester registered oval. Wenvoe Certificate (2019). S.G. O24, £900. Photo

£100-140

SPINK LIVE


Spink Live is now running on a new and improved bidding platform
 Accessible online through www.spink.com and also available iOS and Android devices

Bidding on 'Spink Live' remains free of charge



Download on the
App Store

GET IT ON
Google Play



Click to Login / Register

Tick your Interests

Scroll the Lots

Slide to Bid

MY ACCOUNT

- Login
- Consign An Item
- Watched Lots
- My Bids

- ☒ Medals
- ☒ Stamps
- ☐ Watches
- ☒ Whiskies & Spirits
- ☒ Wines

Lot 3
SEAL, 5 songs, including all
US\$7,000

Lot 4
RANDY CRAWFORD & JOE SAMPLE, 4
US\$7,000

Lot 2010 - CURRENT B

Slide to bid €

CURRENT HISTORY

For any enquiries or further assistance please contact:
 Tel: +44 (0)20 7563 4112 | Email: spinklive@spink.com

SPINK
 WHERE HISTORY IS VALUED

Government Parcels



841



842



843

- 841 ★ 1883-86 9d. dull green, EA, part to large part original gum; centred a little high and right. Good appearance. B.P.A. Certificate (1980). S.G. O63, £2750. Photo £300-350
- 842 ○ — 9d. dull green, FR cancelled by a good strike of 1885 hooded London Parcel Post c.d.s. Cat. £1200. Photo £100-120
- 843 ○ — 9d. dull green, IM cancelled by a very light strike of a parcel post cancellation. Fresh colour and attractive. Photo £120-150



844



— Ex 847 —

- 844 ☉ — 1/- orange-brown, plate 13, KL overprinted “SPECIMEN” type 9, with top right corner margins with one of the printer’s initials in the corner, lightly mounted in the margin only. A stunning example of this stamp, usually only proof stamps were initialled. S.G. O64s, £325. Photo £100-120
- 845 ○ — 1/- orange-brown, plate 13, QB cancelled by 1886 Leicester Square c.d.s. S.G. O64, £300 £50-60
- 846 ☉ 1887-90 6d. and 9d. overprinted “SPECIMEN” type 9, 6d. unmounted, 9d. large part original gum but small fault on corner perf. S.G. O66-67s, £550 £80-100
- 847 ★ — 1½d., 9d. and 1/- green, part to large part original gum. Cat £1300. Photo £140-180
- 848 ○ A used collection with 1883-86 1½d., 9d. and 1/- plate 13; 1889-90 set of four, 1891-1900 set of four and K.E.VII set of five; fresh colours and generally good to fine. (16) £400-500

END OF THE SALE

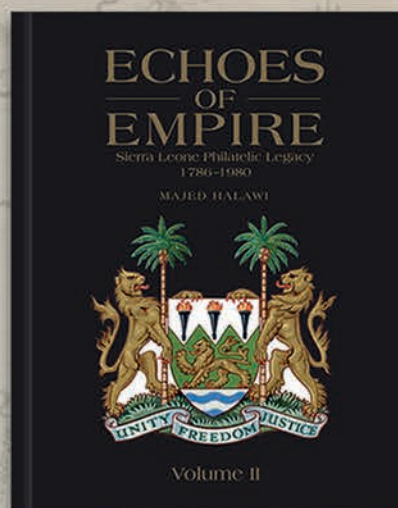
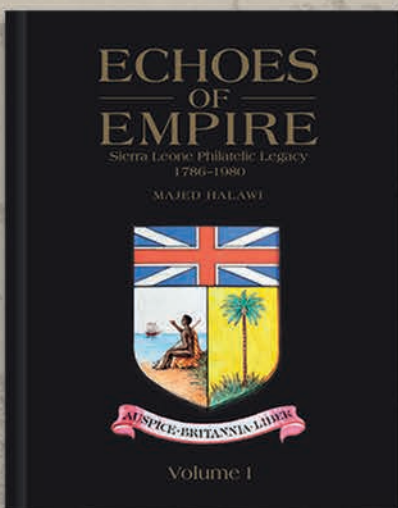
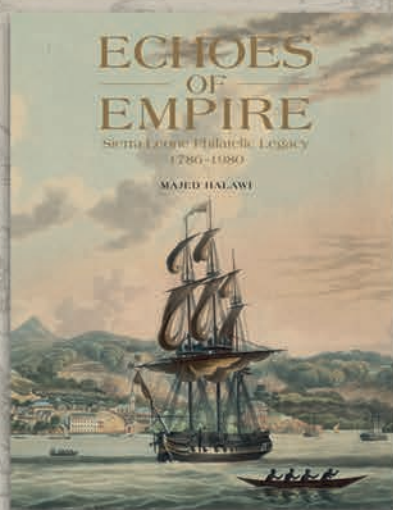
SPINK

LONDON
1666

ARRIVING SUMMER 2019

ECHOES OF EMPIRE

Sierra Leone Philatelic Legacy 1786–1980



by Majed Halawi

Hardback, in two volumes with slipcase

Published in association with the BPA, these volumes are an essential addition to the libraries of all those who have an interest in social philately. Building on early works on Sierra Leone's stamps and postal history, Echoes of Empire offers detailed information, new interpretations, and illustrations spanning the entire period under study, relying on what could undoubtedly be considered as the finest collection of Sierra Leone philatelic material to have been assembled to date.

PRE-ORDER NOW

RRP £60

For more information, please contact the Spink Book Department
Tel: +44 (0)20 7563 4119 | Email: books@spink.com

SPINK London | 69 Southampton Row | Bloomsbury | London | WC1B 4ET

WWW.SPINKBOOKS.COM

SPINK

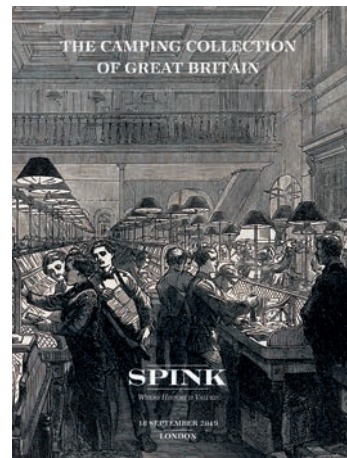
LONDON
1666

Sale Venue:

At The Royal Philatelic Society London
15 Abchurch Lane
2nd Floor
London EC4N 7BW
tel: +44 (0)20 7563 4005
fax: +44 (0)20 7563 4037
email: auctionteam@spink.com

WRITTEN BIDS FORM

This form should be sent or faxed to the Spink auction office in advance of the sale. References for new clients should be supplied in good time to be taken up before the sale. Bids received later than one hour before the start of the sale may not be processed.



NAME _____

ADDRESS _____

POSTCODE _____

69 Southampton Row, Bloomsbury,
London WC1B 4ET
tel: +44 (0)20 7563 4005
fax: +44 (0)20 7563 4037
email: auctionteam@spink.com

YOU CAN ALSO BID IN REAL TIME ON SPINK LIVE.
PLEASE DOWNLOAD SPINK LIVE APP FROM THE
APP STORE OR VISIT WWW.SPINK.COM,
REGISTER AND LOG INTO THE SALE.

SALE TITLE

**The Camping Collection
of Great Britain**

DATE

**18 September 2019
at 10.30 a.m.**

CODE NAME

CAMPING

SALE NO.

19043

I request Spink, without legal obligations of any kind on its part, to bid on the following Lots up to the price given below. I understand that if my bid is successful the Purchase Price will be the sum of the final bid and Buyer's Premium as a percentage of the final bid, any VAT chargeable, also postage charge and a fee for paying by card. The Rate of Buyer's Premium is 20% of the final hammer price of each lot. I understand Spink will pursue me for payment for any successful bid. In addition, I understand and consent that Spink may share my personal details relating to the default with other auction houses and live bidding platforms to protect themselves from such defaults.

All bids shall be treated as offers made on the Terms and Conditions for Buyers printed in the catalogue. I also understand that Spink provides the service of executing bids on behalf of clients for the convenience of clients and that Spink will not be held responsible for failing to execute bids. If identical commission bids are received for the same Lot, the commission bid received first by Spink will take precedence. Please note that you will not be notified if there are higher written bids received.

**BIDDERS PLEASE NOTE OUR EXTENSION CLAUSES IN OUR TERMS AND CONDITIONS FOR BUYERS
PLEASE PRINT CLEARLY IN BLOCK LETTERS AND ENSURE THAT BIDS ARE IN STERLING**

Lot Number (in numerical order)	Price Bid £ (excluding Buyer's Premium)

Lot Number (in numerical order)	Price Bid £ (excluding Buyer's Premium)

Lot Number (in numerical order)	Price Bid £ (excluding Buyer's Premium)

☐ Please hold my purchased lots for collection

TEL. HOME _____ TEL. OFFICE _____

FAX _____ E-MAIL _____

SIGNATURE _____ VAT NUMBER _____

☐ I agree to receive notifications about Spink auctions, news and events via email and direct mail

☐ I agree to receive marketing notifications related only to the following categories (*please select as appropriate*)

**Autographs / Banknotes / Bonds & Shares / Books / Coins / Comics / Handbags / Jewellery / Maps / Medals / Stamps / Watches /
Whiskies & Spirits / Wine / Corporate News & Events**

We will use the personal information you provide to us as set out in our privacy notice available at www.spink.com/privacy-policy

Continued ...

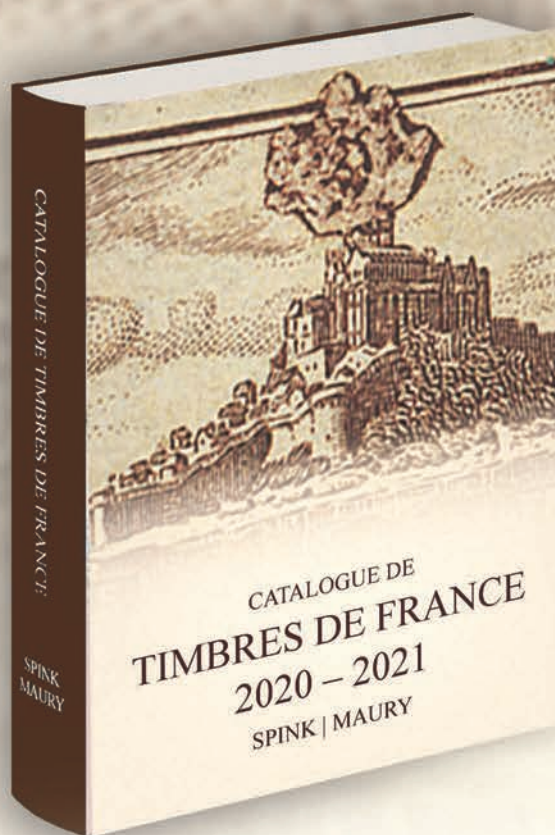
REFERENCES REQUIRED FOR CLIENTS NOT YET KNOWN TO SPINK

SPINK

WHERE HISTORY IS VALUED

THE SPINK MAURY CATALOGUE DE TIMBRES DE FRANCE 2020-2021

AVAILABLE SEPTEMBER 2019 - PRE-ORDER NOW



123rd Edition

Hardback

210 x 148mm

736pp with colour illustrations throughout

ISBN: 978-1-912667-14-7

The Spink Maury Catalogue has traditionally provided the highest level of detail for the stamps and covers of France and the French colonies, with thousands of top quality illustrations and prices updated every year. It was acquired by Spink in 2015, and the editors have since endeavoured to make this the premium reference work of its kind.

The catalogue includes stamps on cover, tete-beche issues, blocks, reprints, military mail, specimens, telegraphs, officials, parcel post, booklets, essays, proofs, airmails, precancels, postage dues, imperforate issues, balloon mail, occupation issues, telephone stamps, siege mail and war stamps, and is the authoritative work for any collector of French stamps, or anyone interested in this fascinating area of philately.

RRP: £27.50 (+P&P)

The enhanced 2020 edition includes stamps from the 'Hermione' collection of semi-modern France, and is as always an absolute must for collectors of French stamps.

For more information, please contact the Book Department:

Tel: +44 (0)20 7563 4119 | Email: books@spink.com

SPINK LONDON | 69 Southampton Row | Bloomsbury | London | WC1B 4ET

WWW.SPINKBOOKS.COM

TERMS AND CONDITIONS FOR BUYERS

These conditions set out the terms on which we (**Spink and Son Limited** of 69 Southampton Row, Bloomsbury London WC1B 4ET (company no. 04369748)) contract with you (**Buyer**) either as agent on behalf of the Seller or as principal if we are the Seller. You should read these conditions carefully.

1 DEFINITIONS

The following definitions apply in these conditions:

Auctioneers' Margin Scheme	means a VAT margin scheme as defined by HM Revenue & Customs;
Buyer's Premium	means the charge payable by you as a percentage of the Hammer Price, at the rates set out in clause 5.1 below;
Certificate of Authenticity	means a certificate issued by an Expert Committee confirming the authenticity of a Lot;
Expert Committee	means a committee of experts to whom a Lot may be sent for an extension in accordance with clause 3.4.3;
Forgery	means a Lot constituting an imitation originally conceived and executed as a whole with a fraudulent intention to deceive as to authorship, origin, age, period, culture or source where the correct description as to such matters is not reflected by the description in the catalogue and which at the date of the auction had a value materially less than it would have had if it had been in accordance with the description in the catalogue. Accordingly, no Lot shall be capable of being a Forgery by reason of any damage and/or restoration work of any kind (including re-enamelling);
Hammer Price	means the amount of the highest bid accepted by the auctioneer in relation to a Lot;
Lot	means any item deposited with us for sale at auction and, in particular, the item or items described against any Lot number in any catalogue;
Reserve	the amount below which we agree with the Seller that the Lot cannot be sold;
Seller	means the owner of the Lot being sold by us;
Spink Group	Spink and Son Limited, our subsidiaries and associated companies.
VAT	value added tax chargeable under VAT and any similar replacement or additional tax; and
VAT Symbols	means the symbols detailing the VAT status of the Lot details of which are set out at the back of the catalogue.

2 SPINK'S ROLE AS AGENT

- 2.1 All sales undertaken by us either at auction or privately are undertaken either as agent on behalf of the Seller or from time to time, as principal if we are the owner of the Lot. Please note that even if we are acting as agent on behalf of the Seller rather than as principal, we may have a financial interest in the Lot.
- 2.2 The contract for the sale of the Lot will be between you and the Seller.
- 2.3 The Seller's sale of the Lot to you is subject to any terms and conditions, disclaimers or exclusions included with any promotional material or catalogue descriptions for the Lot, or otherwise notified to you by the Seller or us on their behalf.

3 BEFORE THE SALE

- 3.1 **Examination of goods**
You are strongly advised to examine personally any goods in which you are interested, before the auction takes place. Condition reports are usually available on request. We provide no guarantee to you other than in relation to Forgeries, as set out in clause 5.13 of these Terms and Conditions.
- 3.2 **Catalogue descriptions**
 - 3.2.1 Statements by us in the catalogue or condition report, or made orally or in writing elsewhere, regarding the authorship, origin, date, age, size, medium, attribution, genuineness, provenance, condition or estimated selling price of any Lot are merely statements of opinion, and are not to be relied on as statements of definitive fact. Catalogue and web illustrations are for guidance only, and should not be relied on either to determine the tone or colour of any item. No lot shall be rejected on the grounds of inaccurate reproduction. No lot illustrated in the catalogue and online shall be rejected on the grounds of cancellation, centring, margins, perforation or other characteristics apparent from the illustration. Estimates of the selling price should not be relied on as a statement that this price is either the price at which the Lot will sell or its value for any other purpose.
 - 3.2.2 Many items are of an age or nature which precludes their being in perfect condition and some descriptions in the catalogue or given by way of condition report make reference to damage and/or restoration. We provide this information for guidance only and the absence of such a reference does not imply that an item is free from defects or restoration nor does a reference to particular defects imply the absence of any others.
 - 3.2.3 Other than as set out in clause 5.13, and in the absence of fraud, neither the Seller nor we, nor any of our employees or agents, are responsible for the correctness of any statement as to the authorship, origin, date, age, attribution, genuineness or provenance of any Lot nor for any other errors of description or for any faults or defects in any Lot. Every person interested should exercise and rely on his own judgment as to such matters.
- 3.3 **Your Responsibility**
You are responsible for satisfying yourself as to the condition of the goods and the matters referred to in the catalogue description.
- 3.4 **Extensions – Stamps only**
 - 3.4.1 If you wish to obtain an expert opinion or Certificate of Authenticity on any Lot (other than a mixed Lot or Lot containing undescribed stamps) you must notify us in writing not less than forty-eight hours before the time fixed for the commencement of the first session of the sale. If accepted by us, such request shall have the same effect as notice of an intention to question the genuineness or description of the Lot for the purposes of clause 5.13 (Refund in the case of Forgery) of these Terms and Conditions and the provisions of clause 5.13 (Refund in the case of Forgery) shall apply accordingly.
 - 3.4.2 Notice of a request for an expert opinion or Certificate of Authenticity must give the reason why such opinion is required and specify the identity of your proposed expert which will be subject to agreement by us. We reserve the right, at our discretion, to refuse a request for an expert opinion or Certificate of Authenticity including (without limitation) where the proposed expert is not known to us.
 - 3.4.3 If we accept a request for an expert opinion or Certificate of Authenticity we will submit the Lot to the Expert Committee. You acknowledge and accept that the length of time taken by an Expert Committee to reach an opinion will vary depending on the circumstances and in any event is beyond our control.
 - 3.4.4 We will not accept a request for an extension on account of condition. Any Lot described in the catalogue as having faults or defects may not be returned even if an expert opinion or Certificate of Authenticity cites other faults or defects not included in the catalogue description, other than in the case of a Forgery.
 - 3.4.5 Should Spink accept a request for an extension under the foregoing provisions of this paragraph, the fact may be stated by the Auctioneer from the rostrum prior to the sale of the Lot.
 - 3.4.6 It should be noted that any stamp accompanied by a Certificate of Authenticity is sold on the basis of that Certificate only and not on the basis of any other description or warranty as to authenticity. No request for an extension will be accepted on such a stamp and the return of such a stamp will not be accepted.
 - 3.4.7 If you receive any correspondence from the Expert Committee in relation to the Lot, including but not limited to a Certificate of Authenticity, you must provide us with copies of such correspondence no later than 7 days after you receive such correspondence.

4 AT THE SALE

- 4.1 **Refusal of admission**
Our sales usually take place on our own premises or premises over which we have control for the sale, and we have the right, exercisable at our complete discretion, to refuse admission to the premises or attendance at an auction.
- 4.2 **Registration before bidding**
All bidders must be registered either by completing a registration form or creating an account online. Please be aware that we usually require buyers to present identification before making a bid at auction, undergo a credit check or provide a trade reference.
If you have not bid successfully with Spink in the past, or you are registering with us for the first time, we reserve the right to require a deposit of up to 50% of the amount you intend to spend. Such deposit will be deducted from your invoice should you be successful. If you are unsuccessful at auction, your deposit will be returned by the same means it was paid to Spink.
Some lots may be designated, prior to the auction, as "Premium Lots", which means a deposit may be required before placing a bid on the item for sale. Information will be posted on our website in such an event.
- 4.3 **Bidding as Principal**
When making a bid (**whether such bids are made in person or by way of telephone bids operated by Spink, commission or online or email bids**), you will be deemed to be acting as principal and will be accepting personal liability, unless it has been agreed in writing, at the time of registration, that you are acting as agent on behalf of a third party buyer acceptable to us.
- 4.4 **Commission Bids**
If you give us instructions to bid on your behalf, by using the form provided in our catalogues or via our website, we shall use reasonable endeavours to do so, provided these instructions are received not later than 24 hours before the auction. If we receive commission bids on a particular Lot for identical amounts, and at auction these bids are the highest bids for the Lot, it will be sold to the person whose bid was received first. Commission bids are undertaken subject to other commitments at the time of the sale, and the conduct of the auction may be such that we are unable to bid as requested. Since this is undertaken as a free service to prospective buyers on the terms stated, we cannot accept liability for failure to make a commission bid. You should therefore always attend personally if you wish to be certain of bidding.

- 4.5 On-line Bidding**
We offer internet services as a convenience to our clients. We will not be responsible for errors or failures to execute bids placed on the internet, including, without limitation, errors or failures caused by (i) a loss of internet connection by either party for whatever reason; (ii) a breakdown or problems with the online bidding software and/or (iii) a breakdown or problems with your internet connection, computer or system. Execution of on-line internet bids on www.spink.com and Spink Live is a free service undertaken subject to other commitments at the time of the auction and we do not accept liability for failing to execute an online internet bid or for errors or omissions in connection with this activity.
- 4.6 Telephone Bids**
If you make arrangements with us not less than 24 hours before the sale, we shall use reasonable endeavours to contact you to enable you to participate in bidding by telephone, but in no circumstances will we be liable to either the Seller or you as a result of failure to do so.
- 4.7 Currency Converter**
At some auctions, a currency converter will be operated, based on the one month forward rates of exchange quoted to us by Barclays Bank Plc or any other appropriate rate determined by us, at opening on the date of the auction. Bidding will take place in a currency determined by us, which is usually sterling for auctions held in London. The currency converter is not always reliable, and errors may occur beyond our control either in the accuracy of the Lot number displayed on the converter, or the foreign currency equivalent of sterling bids. We shall not be liable to you for any loss suffered as a result of you following the currency converter.
- 4.8 Video images**
At some auctions there will be a video screen. Mistakes may occur in its operation, and we cannot be liable to you regarding either the correspondence of the image to the Lot being sold or the quality of the image as a reproduction of the original.
- 4.9 Bidding Increments**
Bidding generally opens below the low estimate and advances in the following order although the auctioneer may vary the bidding increments during the course of the auction. The normal bidding increments are:
- | | |
|--------------------|-------------------------|
| Up to £100 | by £5 |
| £100 to £300 | by £10 |
| £300 to £600 | by £20 |
| £600 to £1,000 | by £50 |
| £1,000 to £3,000 | by £100 |
| £3,000 to £6,000 | by £200 |
| £6,000 to £10,000 | by £500 |
| £10,000 to £20,000 | by £1,000 |
| £20,000 and up | Auctioneer's discretion |
- 4.10 Bidding by Spink**
- 4.10.1** We reserve the right to bid on Lots on the Seller's behalf up to the amount of the Reserve (if any), which will never be above the low estimate printed in the auction catalogue.
- 4.10.2** The Spink Group reserves the right to bid on and purchase Lots as principal.
- 4.10.3** Lots with this symbol (Ⓢ) indicate that a party has provided Spink with an irrevocable bid on the lot that will be executed during the sale at a value that ensures that the lot will sell. The irrevocable bidder, who may bid in excess of the irrevocable bid, will be compensated based on his bid in the event he or she is not the successful bidder or may receive a fixed fee in the event he or she is the successful bidder. If the irrevocable bidder is the successful bidder, the fixed fee for providing the irrevocable bid may be netted against the irrevocable bidder's obligation to pay the full purchase price for the lot. If the irrevocable bid is not secured until after the printing of the auction catalogue, a pre-sale announcement will be made indicating that there is an irrevocable bid on the lot.
- If you are interested in placing an irrevocable bid in an auction, please contact us at chairmanoffice@spink.com. Typically, only some of the lots with an estimate, which must exceed £100,000 or equivalent in other currencies are open to irrevocable bids.
- 4.11 The Auctioneer's Discretion**
The auctioneer has the right at his absolute discretion to refuse any bid to advance the bidding in such manner as he may decide to withdraw or divide any Lot, to combine any two or more Lots and, in the case of error or dispute, to put an item up for bidding again.
- 4.12 Successful Bid**
Subject to the auctioneer's discretion, the striking of his hammer marks the acceptance of the highest bid, provided always that such bid is higher than the Reserve (where applicable), and the conclusion of a contract for sale between you and the Seller.
- 4.13 After Sale Arrangements**
If you enter into any private sale agreements for any Lot with the Seller within 60 days of the auction, we, as exclusive agents of the Seller reserve the right to charge you the applicable Buyer's Premium in accordance with these Terms and Conditions, and the Seller a commission in accordance with the terms of the Seller's agreement.
- 4.14 Return of Lot**
- 4.14.1** Once your bid has been accepted for a Lot then you are liable to pay for that Lot in accordance with these Terms and Conditions. If there are any problems with a Lot then you must notify us within 7 days of receipt of the Lot, specifying the nature of the problem. We may then request that the Lot is returned to us for inspection. Save as set out in clause 5.13, the cancellation of the sale of any Lot and the refund of the corresponding purchase price is entirely at our sole discretion. We will not normally exercise that discretion if the Lot is not received by us in the same condition that it was in at the auction date.
- 4.14.2** No lot may be returned on account of condition if the condition was stated by a third party grading company (including, but not limited to PCGS, NGC, ANACS, ICG, PMG, WBG, Legacy Currency Grading).
- 5 AFTER THE AUCTION**
- 5.1 Buyer's Premium and other charges**
In addition to the Hammer Price, you must pay us the Buyer's Premium at a rate of 20% of the final Hammer price of each lot, postage charge and a fee for paying by card.
- 5.2 Value Added Tax**
Other than in respect of Zero-rated Lots (o) VAT is chargeable on the Hammer price and the Buyer's premium of daggered (†) and (Ω) lots at the standard rate (currently 20%), and on lots marked (x) at the reduced rate (currently 5% on the Hammer price and 20% on the Buyer's premium). VAT on Margin scheme lots (identified by the absence of any VAT symbol next to the lot number) is payable at 20% on the Buyer's premium only.
- 5.3 VAT Refunds**
- General**
- 5.3.1** As we remain liable to account for VAT on all Lots unless they have been exported outside the EU within 3 months of the date of sale, you will generally be asked to deposit all amounts of VAT invoiced. However, if a Spink nominated shipper is instructed, then any refundable VAT will not be collected. In all other cases credits will be made when proof of export is provided. If you export the Lot yourself you must obtain shipping documents from the Shipping Department for which a charge of £50 will be made.
- 5.3.2** If you export the Lot you must return the valid proof of export certificate to us within 3 months of the date of sale. If you fail to return the proof of export certificate to us within such period and you have not already accounted to us for the VAT, you will be liable to us for the full amount of the VAT due on such Lot and we shall be entitled to invoice you for this sum.
- 5.3.3** To apply for a refund of any VAT paid, the proof of export certificate must be sent to our Shipping Department clearly marked 'VAT Refund' within 3 months of the date of sale. No payment will be made where the total amount of VAT refundable is less than £50 and Spink will charge £50 for each refund processed.
- VAT Refunds - Buyers from within the EU**
- 5.3.4** VAT refunds are available on the Hammer Price and Buyer's Premium of Daggered (†) and Investment Gold (g) Lots. You must certify that you are registered for VAT in another EU country and that the Lot is to be removed from the United Kingdom within 3 months of the date of sale.
- 5.3.5** Where an EU buyer purchases a Lot on which import VAT has been charged, no refund of VAT is available from us. It may be possible to apply directly for a refund on form VAT 65 to HM Revenue & Customs Overseas Repayment Section, Londonderry.
- VAT Refunds - Buyers from outside the EU**
- 5.3.6** Where a Lot is included within the Auctioneers' Margin Scheme and evidence of export from the EU is produced within 3 months of the date of sale, the VAT on Buyer's Premium may be refunded.
- 5.3.7** Where the Lot is marked as a Daggered (†) Lot the VAT charged on the Hammer Price may be refunded where evidence of export from the EU is produced within 3 months of the date of sale. A refund of VAT charged on the Buyer's Premium can also be made on receipt of proof of business as a collectibles dealer.
- 5.3.8** Where the Lot is marked as an Omega (Ω) Lot or an Import VAT (x) Lot and evidence of export from the EU is produced within 3 months of the date of sale, the VAT charged on both the Hammer Price and Buyer's Premium may be refunded. Where required, we can advise you on how to export such Lots as a specific form of export evidence is required. Where we advise you on the export of the Lots, please be aware that the ultimate responsibility in respect of obtaining a valid proof of export certificate will lie with you and we will not be responsible for your failure to obtain such certificate.
- 5.3.9** Lot marked as Investment Gold (g) is exempt from VAT on Hammer price. A refund of VAT charged on the Buyer's Premium can be made on receipt of proof of business as a collectibles dealer and where evidence of export from the EU is produced within 3 months of the date of sale.
- 5.4 Payment**
- 5.4.1** You must provide us with your full name and permanent address and, if so requested, details of the bank from which any payments to us will be made. You must pay the full amount due (comprising the Hammer Price, the Buyer's Premium and any applicable VAT) within seven days after the date of the sale. This applies even if you wish to export the Lot and an export licence is (or may be) required.
- 5.4.2** You will not acquire title to the Lot until all amounts due have been paid in full. This includes instances where special arrangements were made for release of Lot prior to full settlement.
- 5.4.3** Payment should be made in sterling by one of the following methods:
- Direct bank transfer to our account details of which are set out on the invoice. All bank charges shall be met by you. Please ensure that your client number is noted on the transfer.
 - By cheque or bank draft made payable to Spink and Son Ltd and sent to Spink at 69 Southampton Row, Bloomsbury, London WC1B 4ET. Please note that the processing charges for payments made by cheques or bank drafts drawn on a non-U.K bank shall be met by you. Please ensure that the remittance slip printed at the bottom of the invoice is enclosed with your payment.

- (iii) By Visa or Mastercard. All Corporate cards regardless of origin and Consumer debit and credit cards issued outside the EU are subject to a fee of 2%. For all card payments there are limits to the amounts we will accept depending on the type of card being used and whether or not the cardholder is present.
- 5.4.4 Payments should be made by the registered buyer and not by third parties, unless it has been agreed at the time of registration that you are acting as an agent on behalf of a third party.
- 5.5 Invoices**
Invoices may consist of one or more pages and will show: Zero rated Lots (o); no symbol Lots sold under the Auctioneers' Margin Scheme; Lots marked (g) special scheme Investment Gold; Daggered Lots (†), imported Lots marked (x) and (Ω), (c) Lots with Zero rated hammer for EU VAT registered buyers.
- 5.6 Collection of Purchases**
5.6.1 Unless specifically agreed to the contrary, we shall retain lots purchased until all amounts due to us, or to the Spink Group, have been paid in full. Buyers will be required to pay for their lots when they wish to take possession of the same, which must be within 7 days of the date of the sale, unless prior arrangements have been made with Spink. Without prior agreement, lots will not be released until cleared funds are received with regard to payments made by cheque.
5.6.2 Unless we notify you to the contrary, items retained by us will be covered in accordance with our policy which is available for inspection at our offices from the date of sale for a period of seven days or until the time of collection, whichever is sooner. After seven days or from the time of collection, whichever is the earlier, the Lot will be entirely at your risk.
5.6.3 Our policy will not cover and we are unable to accept responsibility for damage caused by woodworm, changes in atmospheric conditions or acts of terrorism.
- 5.7 Notification**
We are not able to notify successful bidders by telephone. While Invoices are sent out by email or mail after the auction we do not accept responsibility for notifying you of the result of your bid. You are requested to contact us by telephone or in person as soon as possible after the auction to obtain details of the outcome of your bids to avoid incurring charges for late payment.
- 5.8 Packing and handling**
5.8.1 We shall use all reasonable endeavours to take care when handling and packing a purchased Lot but remind you that after seven days or from the time of collection, whichever is sooner, the Lot is entirely at your risk. Our postage charges are set out at the back of the catalogue.
5.8.2 It is the responsibility of the Buyer to be aware of any Import Duties that may be incurred upon importation to the final destination. Spink will not accept return of any package in order to avoid these duties. The onus is also on the Buyer to be aware of any Customs import restrictions that prohibit the importation of certain collectibles. Spink will not accept return of the Lot(s) under these circumstances. Spink will not accept responsibility for Lot(s) seized or destroyed by Customs.
5.8.3 If the Buyer requires delivery of the Lot to an address other than the invoice address this will be carried out at the discretion of Spink.
- 5.9 Recommended packers and shippers**
If required our shipping department may arrange shipment as your agent. Although we may suggest carriers if specifically requested, our suggestions are made on the basis of our general experience of such parties in the past and we are not responsible to any person to whom we have made a recommendation for the acts or omissions of the third parties concerned.
- 5.10 Remedies for non-payment or failure to collect purchases**
5.10.1 If you fail to make payment within seven days of your stipulated payment date set out in your invoice, we shall be entitled to exercise one or more of the following rights or remedies:
5.10.1.1 to charge interest at the rate of 2% per month compound interest, calculated on a daily basis, from the date the full amount is due;
5.10.1.2 to set off against any amounts which the Spink Group may owe you in any other transaction the outstanding amount remaining unpaid by you;
5.10.1.3 we may keep hold of all or some of your Lots or other property in the possession of the Spink Group until you have paid all the amounts you owe us or the Spink Group, even if the unpaid amounts do not relate to those Lots or other property. Following fourteen days' notice to you of the amount outstanding and remaining unpaid, the Spink Group shall have the right to arrange the sale of such Lots or other property. We shall apply the proceeds in discharge of the amount outstanding to us or the Spink Group, and pay any balance to you;
5.10.1.4 where several amounts are owed by you to the Spink Group in respect of different transactions, to apply any amount paid to discharge any amount owed in respect of any particular transaction, whether or not you so direct;
5.10.1.5 to reject at any future auction any bids made by you or on your behalf or obtain a deposit from you before accepting any bids.
5.10.2 If you fail to make payment within thirty-five days, we shall in addition be entitled to:
5.10.2.1 to cancel the sale of the Lot or any other item sold to you at the same or any other auction;
5.10.2.2 to arrange a resale of the Lot, publicly or privately, and, if this results in a lower price being obtained, claim the balance from you together with all reasonable costs including a 20% seller's commission, expenses, damages, legal fees, commissions and premiums of whatever kind associated with both sales or otherwise, incurred in connection with your failure to make payment;
5.10.2.3 when reselling the Lot, place a notice in our catalogue stating that you successfully purchased the Lot at auction but have subsequently failed to pay the Hammer Price of the Lot; or
5.10.2.4 take any other appropriate action as we deem fit.
5.10.3 If you fail to collect within fourteen days after the sale, whether or not payment has been made, you will be required
5.10.3.1 to pay a storage charge of £2 per item per day plus any additional handling cost that may apply.
5.10.3.2 you will not be entitled to collect the Lot until all outstanding charges are met, together with payment of all other amounts due to us.
- 5.11 Use of Default Information**
If you fail to make payment for a Lot in accordance with these Terms and Conditions:
5.11.1 we reserve the right to refuse you the right to make bids for any future auction irrespective of whether previous defaults have been settled; and
5.11.2 you acknowledge that we may (as necessary for our legitimate interests those of other auctioneers and live bidding platforms in referencing customers and avoiding customer defaults) disclose details of such default to other auctioneers and live bidding platforms, which will include your name, address, nature of the default and the date of the default.
Auctioneers or live bidding platforms who receive details of the default may rely on such information when deciding whether to enter into a transaction with you in the future.
- 5.12 Export Licence**
5.12.1 If required we can, at our discretion, advise you on the detailed provisions of the export licensing regulations. Where we advise you in relation to export licensing regulations the ultimate responsibility in respect of any export will lie with you and we will not be responsible for your failure to apply for any necessary licences.
5.12.2 If the Lot is going to be hand carried by you, you may be required to produce a valid export licence to us or sign a waiver document stating that a licence will be applied for.
5.12.3 You should always check whether an export licence is required before exporting. Export licences are usually obtained within two or three weeks but delays can occur.
5.12.4 Unless otherwise agreed by us in writing, the fact that you wish to apply for an export licence does not affect your obligation to make payment within seven days nor our right to charge interest on late payment.
5.12.5 If you request that we apply for an export licence on your behalf, we shall be entitled to recover from you our disbursements and out of pocket expenses in relation to such application, together with any relevant VAT.
5.12.6 We will not be obliged to rescind a sale nor to refund any interest or other expenses incurred by you where payment is made by you despite the fact that an export licence is required.
- 5.13 Refund in the case of Forgery**
5.13.1 A sale will be cancelled, and the amount paid refunded to you if a Lot (other than a miscellaneous item not described in the catalogue) sold by us proves to have been a Forgery. We shall not however be obliged to refund any amounts if either (a) the catalogue description or saleroom notice at the auction date corresponded to the generally accepted opinion of scholars or experts at that time, or fairly indicated that there was a conflict of opinions, or (b) it can be demonstrated that the Lot is a Forgery only by means of either a scientific process not generally accepted for use until after publication of the catalogue or a process which at the date of the auction was unreasonably expensive or impracticable or likely to have caused damage to the Lot. Furthermore, you should note that this refund can be obtained only if the following conditions are met:
5.13.1.1 you must notify us in writing, within seven days of the receipt of the Lot(s), that in your view the Lot concerned is a Forgery;
5.13.1.2 you must then return the item to us within fourteen days from receipt of the Lot(s), in the same condition as at the auction date; and
5.13.1.3 as soon as possible following return of the Lot, you must produce evidence satisfactory to us that the Lot is a Forgery and that you are able to transfer good title to us, free from any third party claims.
5.13.1.4 you must provide to us all evidence obtained by you that a Lot is a Forgery no later than 7 days after you receive such evidence.
5.13.2 In no circumstances shall we be required to pay you any more than the amount paid by you for the Lot concerned and you shall have no claim for interest.
5.13.3 The benefit of this guarantee is not capable of being transferred, and is solely for the benefit of the person to whom the original invoice was made out by us in respect of the Lot when sold and who, since the sale, has remained the owner of the Lot without disposing of any interest in it to any third party.
5.13.4 We shall be entitled to rely on any scientific or other process to establish that the Lot is not a Forgery, whether or not such process was used or in use at the date of the auction.

6 LIABILITY

Nothing in these Terms and Conditions limits or excludes our liability for:

- 6.1 death or personal injury resulting from negligence; or
- 6.2 any damage or liability incurred by you as a result of our fraud or fraudulent misrepresentation.

7 USE OF YOUR PERSONAL INFORMATION

- 7.1 We will use the personal information you provide to us as set out in our privacy notice (available at <https://spink.com/privacy-policy>) and in particular to:

- 7.1.1 process the bids you make on Lots (whether successful or otherwise) and other auction related services we provide;
- 7.1.2 process your payment relating to a successful purchase of a Lot;
- 7.1.3 arrange for delivery of any Lot you purchase, which will include passing your details to shipping providers and, on overseas deliveries, to customs where they make enquiries regarding the Lot;
- 7.1.4 inform you about similar products or services that we provide, but you may stop receiving these at any time by contacting us.

- 7.2 In accordance with clause 4.2, we may pass your information to credit reference agencies in order to obtain credit checks from them, and they may keep a record of any search that they do.

- 7.3 In accordance with clause 5.11, where you default on making payment for a Lot in accordance with these terms and conditions we may disclose details of such default to other auctioneers and live bidding platforms.

- 7.4 We are also working closely with third parties (including, for example, other auctioneers and live bidding platforms) and may receive information about you from them.

- 7.5 Where you provide us with personal information about other individuals, you must ensure that your provision of that information is compliant with applicable data protection law.

8 COPYRIGHT

- 8.1 We shall have the right (on a non-exclusive basis) to photograph, video or otherwise produce an image of the Lot. All rights in such an image will belong to us, and we shall have the right to use it in whatever way we see fit.

- 8.2 The copyright in all images, illustrations and written material relating to a Lot is and shall remain at all times our property and we shall have the right to use it in whatever way we see fit. You shall not use or allow anyone else to use such images, illustrations or written material without our prior written consent.

9 VAT

You shall give us all relevant information about your VAT status and that of the Lot to ensure that the correct information is printed in the catalogues. Once printed, the information cannot be changed. If we incur any unforeseen cost or expense as a result of the information being incorrect, you will reimburse to us on demand the full amount incurred.

10 NOTICES

All notices given under these Terms and Conditions may be served personally, sent by 1st class post, or faxed to the address given to the sender by the other party. Any notice sent by post will be deemed to have been received on the second working day after posting or, if the addressee is overseas, on the fifth working day after posting. Any notice sent by fax or served personally will be deemed to be delivered on the first working day following despatch.

11 ADDITIONAL PROVISIONS

The following provisions of this clause 11 shall apply only if you are acting for the purposes of your business.

11.1 Limitation of Liability

Subject to clause 6, we shall not be liable, whether in tort (including for negligence) or breach of statutory duty, contract, misrepresentation or otherwise for any:

- 11.1.1 loss of profits, loss of business, depletion of goodwill and/or similar losses, loss of anticipated savings, loss of goods, loss of contract, loss of use, loss of corruption of data or information; or
- 11.1.2 any special, indirect, consequential or pure economic loss, costs, damages, charges or expenses.

11.2 Severability

If any part of these Terms and Condition is found by any court to be invalid, illegal or unenforceable, that part may be discounted and the rest of the conditions shall continue to be valid and enforceable to the fullest extent permitted by law.

11.3 Force majeure

We shall have no liability to you if we are prevented from, or delayed in performing, our obligations under these Terms and Conditions or from carrying on our business by acts, events, omissions or accidents beyond our reasonable control, including (without limitation) strikes, lock-outs or other industrial disputes (whether involving our workforce or the workforce of any other party), failure of a utility service or transport network, act of God, war, riot, civil commotion, malicious damage, compliance with any law or governmental order, rule, regulation or direction, accident, breakdown of plant or machinery, fire, flood, storm or default of suppliers or subcontractors.

11.4 Waiver

- 11.4.1 A waiver of any right under these Terms and Conditions is only effective if it is in writing and it applies only to the circumstances for which it is given. No failure or delay by a party in exercising any right or remedy under these Terms and Conditions or by law shall constitute a waiver of that (or any other) right or remedy, nor preclude or restrict its further exercise. No single or partial exercise of such right or remedy shall preclude or restrict the further exercise of that (or any other) right or remedy.

- 11.4.2 Unless specifically provided otherwise, rights arising under these Terms and Conditions are cumulative and do not exclude rights provided by law.

11.5 Law and Jurisdiction

- 11.5.1 These Terms and Conditions and any dispute or claim arising out of or in connection with them or their subject matter, shall be governed by, and construed in accordance with, the law of England and Wales.

- 11.5.2 The parties irrevocably agree that the courts of England and Wales shall have exclusive jurisdiction to settle any dispute or claim that arises out of, or in connection with, Terms and Conditions or their subject matter.

Postal Charges

Prices for all items including postage and packaging

Invoice Value	UK	EU	Rest of the World
Up to £1,500	£12	£18	£25
Up to £10,000	£20	£40	£50
Above £10,001	£30	£60	£75

Shipments of more than 2kg or volumetric measurement of more than 2kg have to be sent by courier. Certain countries may incur extra charge when courier services are required by our insurance policy. For lots sent by courier please contact Auctionteam@spink.com for calculation of any further relevant cost in addition to the above charges.

Value Added Tax (VAT)

Charging of (VAT) at Auction

The information shown on this page sets out the way in which Spink intends to account for VAT.

i. Auctioneers' Margin Scheme

1. Where possible, we will offer Lots for sale under the Auctioneers' Margin Scheme. Such Lots can be identified by the absence of any VAT symbol next to the Lot number in the catalogue and will not be subject to VAT on the Hammer Price.
2. Where Lots are sold using the Auctioneers' Margin Scheme to UK VAT-registered businesses, the VAT on Buyers' Premium is not recoverable as input tax. Upon request on sale day, we will issue invoices that show VAT separately on both the Hammer Price and the Buyer's Premium. This will enable VAT-registered businesses to recover the VAT charged as input tax, subject to the normal rules for recovering input tax.

ii. Zero-Rated Lots

Limited Categories of goods, such as books, are Zero-rated (o) for VAT in the United Kingdom. Such Lots are offered under the Auctioneers' Margin Scheme. In these circumstances no VAT will be added to the Buyer's premium.

iii. Dagged Lots

Lots which are Dagged (†) in the catalogue are subject to VAT at 20% on both the Hammer Price and the Buyer's Premium.

iv. Imported and Omega Lots

Lots which are marked (x) in the catalogue are subject to VAT at 5% on the Hammer price plus 20% on the Buyer's premium. Lots which bear the Omega symbol (Ω) are subject to VAT at 20% on the Hammer Price and on the Buyer's Premium. This VAT is payable on items imported from outside the EU. In these cases we have used a temporary importation procedure, which in effect means that the point of importation is deferred until the Lot has been sold. At this point the Buyer is treated as the importer and is liable to pay the import VAT due. We will collect the VAT from you and pay it to HM Customs and Excise on your behalf.

v. Investment Gold Lots

Lots marked (g) in the catalogue are exempt from VAT on the Hammer Price and are subject to VAT at 20% on the Buyer's Premium. A refund of VAT charged on the Buyer's Premium can also be made on receipt of proof of business as a collectibles dealer outside of the EU.

SPINK

LONDON

1666

SALE CALENDAR 2019/2020

STAMPS

17 September	The 'Bartica' Collection of British Guiana Ship Type Issues	London	19039
17 September	The 'Lionheart' Collection of Great Britain and British Empire - Part X	London	19042
18 September	The Camping Collection of Great Britain	London	19043
26 September	The Iconic Inverted Jenny Unique Centerline Block of Four	New York	170
26 September	The Philatelic Collector's Series Sale	New York	171
22-23 October	The Philatelic Collectors' Series Sale	London	19045
2 November	The Treaty Ports of the Shanghai Postal System - Part III	Hong Kong	19056
2/3 November	The Philatelic Collectors' Series Sale	Hong Kong	CSS43
6-18 November	Stamps and Covers of France and French Colonies e-Auction	London	19046
13 November	The 'Rochambeau' Collection of France	London	19047
13-14 November	Dr. Edward Grabowski Postal History Collection of French Colonies	London	19048
13 November	The Freshwater Collection	New York	172
25 November - 9 December	The Woodside Booklets e-Auction	London	19057
5 December	The Woodside Booklets	London	19058
11 January	The Treaty Ports of the Shanghai Postal System - Part IV	Hong Kong	20018
11/12 January	Fine Stamps of China and Hong Kong	Hong Kong	CSS46
29 January	The 'Lionheart' Collection of Great Britain and British Empire - Part XI	London	20011
30/31 January	The Philatelic Collectors' Series Sale	London	20010

COINS

19-30 September	World Gold and Silver Coins e-Auction	London	19060
24 September	British, Indian and Islamic Coins: Autumn Auction	London	19006
24 September	The Waterbird Collection of English Rarities	London	19040
18/21/22 August	The Numismatic Collectors' Series Sale	Hong Kong	CSS41
14-24 October	Estates & Collections e-Auction	New York	351
4-14 November	Coins and Commemorative Medals e-Auction	New York	353
4/5 January	Banknotes, Bonds & Shares and Coins of China and Hong Kong	Hong Kong	CSS45
19 January	The Numismatic Collector's Series at NY INC, Grand Hyatt	New York	355
20-30 January	Coins and Medals e-Auction	New York	356

BANKNOTES

18/21/22 August	The Numismatic Collectors' Series Sale	Hong Kong	CSS41
10-20 September	US & World Banknotes e-Auction	New York	349
2 October	The Ibrahim Salem Collection of British Commonwealth - Part Two	London	19088
2/3 October	World Banknotes	London	19024
9/10 October	The Lou Manzi and A. J. Simms Collections of British Banknotes & other properties - Part II	London	19038
4/5 January	Banknotes, Bonds & Shares and Coins of China and Hong Kong	Hong Kong	CSS45
17 January	World Banknotes at NY INC, Grand Hyatt	New York	354
19 January	The Numismatic Collector's Series at NY INC, Grand Hyatt	New York	355

MEDALS

27/28 November	Orders, Decorations and Medals	London	19003
4/5 January	Banknotes, Bonds & Shares and Coins of China and Hong Kong	Hong Kong	CSS45
19 January	The Numismatic Collector's Series at NY INC, Grand Hyatt	New York	355

BONDS & SHARES

4-11 October	The Wenning Collection of US Stocks and Bonds e-Auction	New York	350
11-29 October	Bonds and Share Certificates of the World e-Auction	London	19019
4/5 January	Banknotes, Bonds & Shares and Coins of China and Hong Kong	Hong Kong	CSS45
19 January	The Numismatic Collector's Series at NY INC, Grand Hyatt	New York	355

HISTORICAL DOCUMENTS

9 July	Historical Documents, Postal History and Autographs	London	19022
--------	---	--------	-------

LIFESTYLE COLLECTABLES

31 May	An Evening of Great Whiskies	Hong Kong	SFW31
October	Handbags and Accessories	Hong Kong	SHA03

The above sale dates are subject to change

Spink offers the following services:

- VALUATIONS FOR INSURANCE AND PROBATE FOR INDIVIDUAL ITEMS OR WHOLE COLLECTIONS -
- SALES ON A COMMISSION BASIS EITHER OF INDIVIDUAL PIECES OR WHOLE COLLECTIONS -



BY APPOINTMENT TO
HER MAJESTY THE QUEEN
Sole Auctioneers & Valuers
Sole Agents for the
Sole Auctioneers & Valuers
Sole Agents for the



BY APPOINTMENT TO
HIS MAJESTY THE KING
Sole Auctioneers & Valuers
Sole Agents for the
Sole Auctioneers & Valuers
Sole Agents for the

SPINK

WHERE HISTORY IS VALUED

FOUNDED
1666

STAMPS COINS BANKNOTES MEDALS BONDS & SHARES AUTOGRAPHS BOOKS
WINE & SPIRITS HANDBAGS COLLECTIONS ADVISORY SERVICES SPECIAL COMMISSIONS

69 Southampton Row, Bloomsbury, London WC1B 4ET
www.spink.com

