

---

# THE 'LIONHEART' COLLECTION OF GREAT BRITAIN AND BRITISH EMPIRE - PART X

---



# SPINK

*WHERE HISTORY IS VALUED*

17 SEPTEMBER 2019

LONDON







# THE 'LIONHEART' COLLECTION OF GREAT BRITAIN AND BRITISH EMPIRE - PART X

Sale Venue:

At The Royal Philatelic Society London

15 Abchurch Lane

2nd Floor

London

EC4N 7BW

tel +44 (0)20 7563 4005 fax +44 (0)20 7563 4037

Vat No: GB 791627108



Sale Details | Tuesday 17 September 2019 at 1.30 p.m.

When sending commission bids or making enquiries,  
this sale should be referred to as **LIONHEART - 19042**

Viewing of Lots | At our stand #122 at Stampex Exhibition, The Business Design Centre.

52 Upper Street, Islington London N1 0QH

From 11 September 2019 to 13 September 2019

| At The Royal Philatelic Society London

Monday 16 September 2019 at 10:00 a.m. – 5:00 p.m.

| Private viewing by appointment only

Live platform

| **SPINK**  **LIVE**

---

## Your Specialists for this Sale



**Joshua Barber**  
jbarber@spink.com  
+44 (0)20 7563 4080



**Nick Startup**  
nstartup@spink.com  
+44 (0)20 7563 4073

### Bids

**Dora Szigeti**

auctionteam@spink.com

+44 (0)20 7563 4005

fax +44 (0)20 7563 4037

### Internet Bidding

**Michael Lewis**

support@spink.com

+44 (0)20 7563 4090

### Payment Enquiries

**Veronica Morris**

creditcontrol@spink.com

+44 (0)20 7563 4018

### VAT Enquiries

**John Winchcombe**

jwinchcombe@spink.com

+44 (0)20 7563 4101

## The Spink Environment Commitment: Paper from Sustainable Forests and Clean Ink

Spink has a long history of preserving not only collectables but our planet, too. We are proud to ensure that our policy of sustainability and conservation keeps up with Spink's growth, helping improve the environment for new generations of collectors.

We insist that our printers source all paper used in the production of Spink catalogues from FSC and/or PEFC suppliers and use non-hazardous inks. We also ask they hold the environmental standard ISO 14001.

Spink recycle all ecological material used on our premises and we encourage you to recycle your catalogue once you have finished with it.

Front Cover Illustration: 1100, 1119, 1126, 1148, 1138, 1362, 1289, 1162, 1157, 1204, 1403, 1246, 1372, 1343, 1393 Back Cover Illustration: 1190, 1297

Inside Front Cover Illustrations: 1407, 1381 Inside Back Cover Illustrations: 1059, 1295



www.spink.com

@SpinkandSon

#Spink\_Auctions

Spink\_auctions

Spinkauctions

Spink\_auctions



## Group Chairman And CEO

Olivier D. Stocker

## Directors

Tim Hirsch FRPSL Anthony Spink

## Chief Financial Officer

Alison Bennet

## Head of EMEA

Mira Adusei-Poku  
mpoku@spink.com

## Global Head of Banknotes and Bonds

Kelvin Cheung  
kcheung@spink.com

## Specialists

### Stamps

Tim Hirsch FRPSL  
David Parsons  
Nick Startup  
Neill Granger FRPSL  
Dominic Savastano  
Josh Barber  
Thomas Fell  
Ian Shapiro (Consultant)  
George Eveleth  
Guido Craveri (Consultant)  
Christopher Green  
George Yue (Consultant)  
Alan Ho

### Bonds & Shares

Mike Veissid (Consultant)  
Peter Christen (Consultant)

### Books

Emma Howard  
Nik Von Uexkull

## Client & Auction Management

Geoff Anandappa  
Dora Szigeti  
Nik Von Uexkull  
Alzbeta Lanova  
John Winchcombe  
Viola Craveri  
Samantha Lanevi  
Newton Tsang  
Christina Kong

## PR & Marketing

Rita Ariete  
Ray Chung

## Chief Customer Officer

Rita Ariete

## Head of Americas

Charles J Blane  
cblane@spink.com

### Coins

Richard Bishop  
Tim Robson  
Gregory Edmund  
Lawrence Sinclair (Consultant)  
Barbara Mears  
Ellie Boot  
Greg Cole  
Kin Choi Cheung  
Paul Pei Po Chow  
Joseph Lam

### Historical Documents

Thomas Fell  
Neill Granger FRPSL  
Ian Shapiro (Consultant)  
Greg Cole

### Finance

Alison Bennet  
Sue Pui  
Marco Fiori  
Mina Bhagat  
Dennis Muriu  
Veronica Morris  
Nicholas Waring

## Representatives For Australia

Peter Griffiths - pgriffiths@spink.com  
Michael R. Downey - mdowney@spink.com

## Representative For Canada

Timothy J. Stewart - tstewart@spink.com

## Representative For Japan

日本での弊社オークションへの出品・参加に関してのお問い合わせ

Alan Ho - japan@spink.com

## Representative For South Africa

Andrew Kennedy - akennedy@spink.com

## Chief Operating Officer

Mira Adusei-Poku

## Head of Asia-Pacific

Sue Pui  
spui@spink.com

### Banknotes

Barnaby Faull  
Elaine Fung  
Arnas Savickas  
Greg Cole  
Paul Pei Po Chow

### Orders, Decorations & Medals

Marcus Budgen  
Iain Goodman  
Jack West-Sherring  
Greg Cole

### Wine & Spirits

George Koutsakis

### Special Commissions

Ian Copson  
Robert Wilde-Evans

### IT & Administration

Michael Lewis  
Berdia Qamarauli (Consultant)  
Liz Cones  
Slawomir Kolsut  
Tom Robinson  
Newton Tsang  
Christina Kong  
Jacqueline Wong

### Spink UK

69 Southampton Row  
Bloomsbury  
London  
WC1B 4ET  
Email:  
conciierge@spink.com  
Tel: +44 (0)20 7563 4000  
Fax: +44 (0)20 7563 4066

### Spink USA

145 W. 57th St.  
18th Floor  
New York, NY  
10019  
Email:  
usa@spink.com  
Tel: +1 646 941 8664  
Fax: +1 646 941 8686

### Spink China

4/F and 5/F  
Hua Fu Commercial  
Building  
111 Queen's Road West  
Sheung Wan  
Hong Kong  
Email:  
china@spink.com  
Tel: +852 3952 3000  
Fax: +852 3952 3038

### Spink Asia

Registered at:  
50 Raffles Place  
#17-01 Singapore Land  
Tower  
Singapore 048623  
Email:  
singapore@spink.com

### Spink Switzerland

Via Livio 8  
6830 Chiasso  
Switzerland  
Email:  
switzerland@spink.com  
Tel: +41 91 911 62 00  
Fax: +41 91 922 20 52



# SPINK

*WHERE HISTORY IS VALUED*

In May 2018, Spink was honoured to host for RPSL an auction to assist with the Tomorrow's Royal campaign.

Following the success of that auction Spink is proud to continue being part of the Tomorrow's Royal campaign, by holding some of our most important and prestigious auctions, at the new home of the Royal Philatelic Society of London head quarters.

We believe this is the start of a new era in philately, as well as a significant development in philatelic co-operation for RPSL and Spink London.

With the RPSL now at the forefront of global philately, a development we hope, will benefit all philatelists for many years to come.

Do join us, in the heart of the city of London, for the beginning of a great philatelic adventure.



The first of our auctions to be held at this magnificent venue will be:

**17th September 2019**

The 'Bartica' Collection of British Guiana Ship Type Issues  
The 'Lionheart' Collection of Great Britain and British Empire Part X

**18th September 2019**

The Camping Collection of Great Britain

Viewing for these auctions will be held at SPINK Stampex stand #122 and thereafter,  
**16th September** on the second floor of the Royal Philatelic Society London.

LONDON | NEW YORK | HONG KONG | SINGAPORE | SWITZERLAND



#SPINK\_AUCTIONS WWW.SPINK.COM



## Extensions

Prospective buyers who wish to obtain an expert opinion on any lot (other than a mixed lot or lot containing undescribed stamps) are requested to notify Spink in writing not less than forty-eight hours before the time fixed for the commencement of the first session of the sale. If accepted by Spink, such request shall have the same effect as notice of an intention to question the authenticity of the lot for the purposes of Condition 3.4 of our Terms and Conditions for Buyers.

Notice of a request for an expert opinion must give the reason why such is required and specify the identity of the expert which will be subject to the agreement of Spink. All lots for which Certificates of Authenticity are desired must be submitted by Spink to the Expert Committee for choice.

**Buyers are reminded that any lot(s) purchased “on extension” are subject to payment in accordance with our normal Terms & Conditions of Business. Settlement of any lots on extension should be made at the time of invoice payment. Overdue accounts are subject to interest charges.**

Extensions requested on account of condition will not be accepted for expert opinions. Any Lot described as having faults or defects may not be returned should a certificate cite other faults or defects not included in the catalogue description.

Should Spink accept a request for an extension under the foregoing provisions of this paragraph, the fact may be stated by the Auctioneer from the rostrum prior to the sale of the lot.

It should be noted that any stamp accompanied by a Certificate of Authenticity is sold on the basis of that Certificate only and not on the basis of any other. No request for an extension will be accepted on such a stamp and the return of such a stamp will not be accepted.

## Notes Concerning Descriptions

**GUM:** Original gum should be expected on unused stamps where appropriate, unless stated otherwise in the description:

mint	unused with original gum showing slight disturbance caused by previous hinge, which may be present in part or entirely removed
part original gum	unused with original gum significantly disturbed or heavily hinged
unmounted mint	original gum as issued
unused	without gum

**COVERS:** Should be expected to have minor nicks and tears usually from opening. Folded letters or covers normally have one or two file folds. These are not described unless of an exceptional nature and are not grounds for return.

entire letter	complete as sent with comments still attached to the outer address portion
entire	the outer portion of a folded letter but without contents
cover	an envelope

## Symbols and Abbreviations

⊛	unmounted mint	d.s.	datestamp
★	unused	h.s.	handstamp
○	used	Ⓐ	air mail
⊞	block of four	Ⓢ	specimen
⊞	block larger than four	Ⓒ	cancelled
☒	used on cover, entire letter, etc.	Ⓔ	essay
△	on piece	Ⓟ	proof
var.	variety, varieties	F	forgery
cat.	catalogue, catalogue value	R	reprint
c.d.s.	circular datestamp		

## References

Catalogue values and numbers are those taken from the latest available edition.

The use of Gibbons Specialised catalogues in Great Britain sales is clearly indicated. Where other catalogues are used they are mentioned by name.

**Buyers are reminded that payment must be made within seven days from the date of sale (condition 5.4.1), and interest will be added for overdue accounts (condition 5.10.1.1).**

**Please note charges for credit card payments (condition 5.4.3(iii)).**

**Buyers are reminded that if they default on a successful bid that details relating to such default may be shared with other auction houses and live bidding platforms (condition 5.11).**



**Note:** All buyers must read the notes concerning requests for Extensions printed on page 4 of this catalogue.

The Terms of that notice must be complied with fully under all circumstances.

Please note that 'Spink Live' is now running on a new and improved on-line bidding platform, which is accessible through [www.spink.com](http://www.spink.com) and also as a SpinkLive app available for download from the App Store.

You can continue bidding online free of charge.

**TUESDAY 17 SEPTEMBER 2019**

**Commencing at 1.30 p.m.**

**GREAT BRITAIN**



1001



1002



1003

- |         |                                                                                                                                                                                                                                                                       |              |
|---------|-----------------------------------------------------------------------------------------------------------------------------------------------------------------------------------------------------------------------------------------------------------------------|--------------|
| x1001 ★ | 1840 1d. black Plate II, IH, a fine unused example just cut into at upper left, three good to large margins, part original gum. S.G. 2, £12,500. Photo                                                                                                                | £1,000-1,200 |
| x1002 ○ | 1840 1d. black Plate II horizontal pair, TF-TG, intense shade, good to large margins all round, cancelled by two light strikes of the red Maltese Cross; tiny scissor cut between the two stamps at the upper margin, otherwise a fine and choice pair. S.G. 2. Photo | £350-450     |
| x1003 ○ | 1862-64 6d. lilac used <b>error, watermark three roses and thistle</b> , barred oval cancellation, fine and rare. S.G. 84d, £8,000. Photo                                                                                                                             | £1,500-2,000 |



1004

- |         |                                                                                                                                                                   |            |
|---------|-------------------------------------------------------------------------------------------------------------------------------------------------------------------|------------|
| x1004 ★ | 1870 ½d. rose, <b>plate 9</b> , NS, centred to top; unused example that has been regummed, still a handsome example of the scarcest plate. S.G. 49, £6,000. Photo | £800-1,000 |
|---------|-------------------------------------------------------------------------------------------------------------------------------------------------------------------|------------|



1005

- |         |                                                                                                               |              |
|---------|---------------------------------------------------------------------------------------------------------------|--------------|
| x1005 ★ | 1891 £1 green, JB, a well-centred, lightly mounted mint example; strong colour, fine. S.G. 212, £7,500. Photo | £1,000-2,000 |
| x1006 ☉ | 1902-11 mixed printings ½d. to 1/- set of fourteen plus five perf. 15x14 values, unmounted mint               | £250-350     |

## ADEN



Ex 1007

- |         |                                                                                            |            |
|---------|--------------------------------------------------------------------------------------------|------------|
| x1007 ☉ | 1937-66 complete mint collection including States, fine unmounted mint. Cat. £2100+. Photo | £800-1,000 |
|---------|--------------------------------------------------------------------------------------------|------------|

## ANTIGUA

- |         |                                                                                                                                                                                                                                                                                                                                                                                                                                                                                                                                                                               |              |
|---------|-------------------------------------------------------------------------------------------------------------------------------------------------------------------------------------------------------------------------------------------------------------------------------------------------------------------------------------------------------------------------------------------------------------------------------------------------------------------------------------------------------------------------------------------------------------------------------|--------------|
| x1008   | 1862-1956 virtually complete mint and used collection on pages including a range of early issues from S.G. 1 with shades and perforation types, some plate proofs, inverted watermarks and some Specimens, later sets complete mint and used with shades and varieties, also a range of Revenue Stamp Duty stamps (11). A fine lot for the specialist in chiefly fine condition                                                                                                                                                                                               | £4,000-6,000 |
| x1009 ★ | 1872-1970 mint collection including 1872 CC perf 12½ 1d. lake with watermark reversed and 1d. red, 1882 CA 2½d. and 4d. (both regummed), 1884 CA perf 12 1d. (2), 1884-87 CA 2½d. with large "2" in "2½" with slanting foot (lightly toned), 6d. and 1/- (2, one lightly toned), 1903-07 CC ½d. to 2/6d. plus 5/- (light stains on reverse), 1908-17 MCA to 2/- with some duplication and 6d. marginal block of nine, 1913 5/-, 1921-29 MCA 3d. to £1 and Script ½d. to 4/- (only one 2½d. blue shade), 1932 Tercentenary and 1935-70 complete (unmounted), fine. Cat. £3300+ | £1,000-1,200 |

## ASCENSION

- |         |                                                                                                                                                                                                                                                                                                                                                          |            |
|---------|----------------------------------------------------------------------------------------------------------------------------------------------------------------------------------------------------------------------------------------------------------------------------------------------------------------------------------------------------------|------------|
| x1010 ★ | 1922-70 mint collection including 1922 (Nov.) ½d. to 3/- (2 sets), 1924-33 ½d. to 3/- with both shades of 1d. plus ½d. corner pair and 8d. corner single showing <i>cleft rock</i> , 1934 ½d. to 5/-, 1938-53 ½d. to 10/- with perf changes and complete from then on, all apparently unmounted, the odd one with gum toning otherwise fine. Cat. £2600+ | £800-1,000 |
| x1011 ★ | 1934 ½d. to 5/- (2 sets), some slight toning; largely lightly mounted mint. S.G. 21-30, £240                                                                                                                                                                                                                                                             | £80-100    |
| 1012    | No Lot                                                                                                                                                                                                                                                                                                                                                   |            |

## BAHAMAS

- |         |                                                                                                                                                                                                                                                                                                                                                                                                                                                                                                           |              |
|---------|-----------------------------------------------------------------------------------------------------------------------------------------------------------------------------------------------------------------------------------------------------------------------------------------------------------------------------------------------------------------------------------------------------------------------------------------------------------------------------------------------------------|--------------|
| x1013 ★ | 1859-82 mint range written-up on two pages including 1859-60 imperf 1d. from the left of the sheet, 1862 no watermark perf 11½x12 1d. carmine-lake (regummed), 1863-77 CC 1d. (6 shades), 4d. bright rose, 4d. brownish rose (used), 6d. (3 shades), 1882 CA perf. 12 1d. and 4d. etc., mostly fine. Cat. £5,000+                                                                                                                                                                                         | £600-800     |
| x1014 ★ | 1863-1937 mint selection on pre-printed pages including 1884-90 set of six to £1, 1902-07 set to 5/-, 1912-19 set to £1, 1918 War Tax set, 1920 set to 1/-, 1921-37 set to £1 etc; chiefly fine                                                                                                                                                                                                                                                                                                           | £1,000-1,500 |
| x1015 ☉ | 1863-1972 mint collection including 1863 CC perf 12½ 1d., 1882-98 CA 1/- (3, one gum toned), 1884-90 1d. to £1 with some shades (5/- gum toned), 1902-07 CA 4d. (2), 1/- (2), 5/- and £1, 1906-11 MCA ½d. to 6d. (2 sets), 1911-19 MCA 1d. to 3/- with some shades, 1912-19 ½d. to £1, 1921-37 Script ½d. to £1 (gum toned), 1930 Tercentenary, 1938-52 ½d. to £1 and apparently complete from then on, virtually all are fine unmounted, some gum toning/toning on duplicate values to 1935. Cat. £3000+ | £800-1,000   |



**Special Delivery**



1016

- x1016 ★ 1916 5d. orange and black with **overprint inverted**, large part original gum. Brandon Certificate after consultation with Ludington (1989). S.G. 51c, £1,300. Photo £700-900

**BARBADOS**

- x1016A ☉ 1852-1970 mint collection in a stockbook including 1875-81 CC perf 14 1d., 4d. red, 6d. chrome-yellow and 1/- purple, 1882-86 ½d. (gum toned) to 5/- with some shades plus 4d. brown block of four, 1892-1903 CA ¼d. to 2/6d. set of eleven, 1897-98 Jubilee white paper ¼d. to 2/6d. (2 sets, one overprinted "SPECIMEN") with some duplication including 2/6d. (2) and blued paper ½d., 5d. and 2/6d., 1905 MCA to 2/6d., 1906 Nelson ¼d. to 1/- with additional 6d. block of four, 1912-16 ¼d. to 3/- with additional 3/- with plate number, 1916-19 ¼d. to 3/- with additional ¼d. showing watermark inverted, 1918-20 4d. and 3/-, 1920-21 Victory ½d. to 3/-, 1925-35 ¼d. to 3/- with perf and shade changes, 1938-47 ½d. to 5/- with perf changes and complete from then on, the vast majority unmounted, fine. Cat. £5400+ £1,500-1,800



1017

- x1017 ★ 1861 1/- blue **error of colour**, pen marks removed as on all examples and colour affected, unused without gum. Rare. B.P.A. Certificate (1989). S.G. 34a, £18,000. Photo  
*Note: In 1863 the printers Perkins, Bacon and Co. sent a supply to the island. On arrival it was discovered that they were printed in blue, the colour of the 1d., instead of black. A new supply was despatched and the "blue" error was not put on sale. Before disposing of these stamps a number were removed and defaced with a cross in ink which has subsequently been cleaned off.* £3,500-4,500
- x1018 1852-1966 large mint and used collection on album pages including 1852-55 2d. greyish-slate mint, 4d. brownish red used, 1855-58 white paper 1d. deep-blue mint pair and a huge range of other early Britannias both mint and used, 1873 5/- mint, used and overprinted "SPECIMEN", also includes plate proofs, 1878 1d. on half 5/- used, most sets from 1882 mint and used along with extras, blocks, pairs etc; condition generally good to fine and worthy of closer inspection £7,000-9,000

Barbados - *contd.*



1019



1020



1021

- x1019 ★ 1861-70 1d. blue, prepared for use, but not issued; part original gum, fine. B.P.A. Certificate (1939). S.G. 37, £2,000. Photo £1,000-1,200
- x1020 ★ 1870 6d. orange-vermilion, large part original gum; fine example of this difficult stamp. R.P.S. Certificate (2014), S.G. 46, £1,000. Photo £700-900
- x1021 ★ 1875 CC 4d. red, perf. 14x12½ line, unused with part original gum; fine with fewer than twenty examples recorded. R.P.S. (1966) and B.P.A. (2010) Certificates. S.G. 84, £5,000. Photo £1,500-2,000
- x1022 ★ 1875-81 perf 14 mint selection written-up on three pages comprising ½d. green (5), 1d. blue (7 including a pair), 3d. mauve-lilac (5), 4d. red (2), 4d. carmine (4) and 4d. crimson-lake, 6d. yellow, 1/- purple (6); mixed gum condition, chiefly fine. S.G. 72-83, £5,000+ £600-800



1023

- x1023 ★ 1878 1d. (type 3a) on half of 5/- dull rose, unused without gum; thin spot at top of "1". Philatelic Foundation (1968) and B.P.A. (2008) Certificates. S.G. 86, £5,000. Photo £1,500-2,000
- x1024 ★ 1892-1935 mint collection on Hagner pages including 1892-1903 CA ½d. to 2/6d. set of eleven, 1897-98 Jubilee set to 2/6d., 1905 MCA set to 2/6d., 1906 Nelson ½d. to 1/-, 1909-10 MCA set to 1/-, 1916-19 MCA ¼d. to 3/- with some shades, 1920 MCA 3/- green and bright violet etc, chiefly fine. Cat. £1,900+ £600-800



Ex 1025

- x1025 ⑩ 1902 6d. Earl of Crawford colour trials on Small Star watermarked paper (4) in yellow-green, dark green, deep brown and reddish-brown; fine and scarce. Photo £1,000-1,200



## BASUTOLAND

- x1026 ☼ 1932-66 complete basic unmounted mint collection with some 1961 surcharge types including 2c. on 2d. with surcharge inverted, 10c. Type II and all three 1r. types, fine. S.G. 1-105, £1400+ £450-550

## BECHUANALAND

### British Bechuanaland



1027



Ex 1028



1029

- x1027 ★ 1888 (Jan.) £1 lilac and black, large part original gum, fine. Brandon Certificate (1986). S.G. 20, £900. Photo £300-400
- x1028 ★⑤ 1888 (Jan.) 1d. to £5 set of twelve, each handstamped "SPECIMEN", large part original gum; £1 with horizontal bend. S.G. 10s-21s, £1,000. Photo £400-600
- x1029 ○ 1888 (Jan.) £5 lilac and black, fine used example cancelled by clear strike of "MAFEKING MR 20 90 BECHUANALAND" d.s.; some slight discolouration visible through front of stamp. R.P.S. Certificate (1980). S.G. 21, £1,700. Photo £1,000-1,200

### Bechuanaland Protectorate



1030



1031

- x1030 ○ 1888 (Aug.) 4d. on 4d. lilac and black, fine used example; lightly cancelled leaving the surcharge clear. S.G. 44, £500. Photo £200-400
- x1031 ★ 1888 (Aug.) 10/- green and black, centred slightly to left, large part original gum, fine. R.P.S. Certificate (2014). S.G. 50, £5,000. Photo £2,500-3,500
- x1032 ☼ 1888-1966 mint collection including British Bechuanaland 1885-87 4d. and 6d., 1888 (Jan.) 1/-, 1888 (Sept.) 2d. on 2d., 1891-1904 1d. to 1/- (2d. with small stain on reverse) and Bechuanaland Protectorate 1888 (Aug.) 2d. on 2d., 1904-13 ½d. to 1/-, 1913-24 ½d. to 1/-, Waterlow 5/-, DLR 2/6d. (2) and Bradbury 2/6d. and 5/- and complete from 1932 onwards including some 1961 surcharge types, the vast majority unmounted, fine. Cat. £2500+ £700-900

## Bechuanaland Protectorate - *contd.*



1033



1034


- x1033 ○ 1897 10½mm. setting, ½d. yellow-green, a fine used and well-centred example of this difficult stamp. S.G. 58. Photo £150-250
- x1034 ○ 1923 Bradbury Wilkinson 2/6d. chocolate-brown, used with clear "LOBATSI 3 JUN" c.d.s., fine. S.G. 88. Photo £100-200

## BERMUDA



Ex 1035

- x1035 ☉ 1865-1970 fine mint collection (some duplication) in a stockbook including 1865-1903 CC perf 14 1d. (2), 3d. (2), 6d. (2), 1/-, perf 14x12½ 6d. (3) and 1/- (3), 1875 1d. on 1/- (regummed), 1883-1904 ½d. to 1/- with some shades, 1906-10 MCA to 4d., 1918-22 MCA 2/- (with plate number), 4/-, 5/- (2, one with plate number), 10/- and £1 (3), 1920-21 Tercentenary sets, 1922-34 Script ¼d. to 1/- with some shades and types, 1924-32 Script 2/- (4), 2/6d. (5), 10/- (3) and 12/6d. (2), 1938-52 perf 14 2/- (19), 2/6d. (7), 5/- (4), 10/- (4), 12/6d. (10), £1 (3) and perf 13 2/- (6), 2/6d. (6), 5/- (2), 10/- (4), 12/6d. (3) and £1 (4) and complete from 1949, the vast majority unmounted, some of the duplicates with gum toning/toning. Cat. £10,000 approx. Photo £4,000-5,000



The Royal Philatelic Society  
London HQ  
15 Abchurch Lane,  
London, EC4N 7BW  
www.rpsl.org.uk

## SPINK

WHERE HISTORY IS VALUED

Spink is proud to continue being part of the Tomorrow's Royal campaign by holding some of our most important and prestigious auctions, at the new HQ of the Royal Philatelic Society of London.

We believe this is the start of a new era in philately, as well as a significant development in philatelic co-operation for RPSL and Spink London.

With the RPSL now at the forefront of global philately, a development we hope, will benefit all philatelists for many years to come.

Do join us, in the heart of the city of London, for the beginning of a great philatelic adventure.





The first of our auctions to be held at this magnificent venue will be:

**17th September 2019**  
The 'Bartica' Collection of British Guiana Ship Type Issues  
The 'Lionheart' Collection of Great Britain and British Empire Part X

**18th September 2019**  
The Camping Collection of Great Britain

Viewing for these auctions will be held at SPINK Stampex stand #122 and thereafter,  
16th September on the second floor of the Royal Philatelic Society London.

LONDON | NEW YORK | HONG KONG | SINGAPORE | SWITZERLAND

#SPINK\_AUCTIONS WWW.SPINK.COM





Ex 1036

- x1036 © 1918-22 MCA 2/- to £1 set of six each overprinted "SPECIMEN", large part original gum. S.G. 51b-55s, £900. Photo £350-450



1037



1038

- x1037 ★ 1930 Script 2/6d. grey-black and pale orange-vermilion on grey-blue, part original gum, a fine example of this scarce shade. R.P.S. Certificate (2007). S.G. 89h, £2,750. Photo £700-900
- x1038 ☉ 1938-53 12/6d. grey and yellow with margin at top, fresh and fine unmounted mint. KGVII Expertising Certificate (2006). S.G. 120d, £700. Photo £200-250

## SPINK LIVE

Spink Live is now running on a new and improved bidding platform  
 Accessible online through [www.spink.com](http://www.spink.com) and also available iOS and Android devices

**Bidding on 'Spink Live' remains free of charge**

Download on the  
App Store

GET IT ON  
Google Play

MY ACCOUNT

- Login
- Consign An Item
- Watched Lots
- My Bids

- ☒ Medals
- ☒ Stamps
- ☐ Watches
- ☒ Whiskies & Spirits
- ☒ Wines

Lot 3: SEAL, 5 songs, including all US\$7,000

Lot 4: RANDY CRAWFORD & JOE SAMPLE, 4 US\$7,000

LOT 2010 - CURRENT B

Slide to bid €

CURRENT HISTORY

Click to Login / Register  
 Tick your Interests  
 Scroll the Lots  
 Slide to Bid

For any enquiries or further assistance please contact:  
 Tel: +44 (0)20 7563 4112 | Email: [spinklive@spink.com](mailto:spinklive@spink.com)

**SPINK**  
 WHERE HISTORY IS VALUED



Bermuda - *contd.*



Ex 1039

x1039

1938-53 specialised mint and used accumulation of keyplates with a range of shades and huge quantity including at least one-hundred mint of each 2/-, 2/6d., 5/-, 10/-, 12/6d. and £1 along with blocks of four and demonstrating a variety of listed printings and some varieties, a large amount of used examples of all keyplate values, some booklets and 1938-52 1d. to 1/- set in quantity; a massive accumulation unchecked for varieties, viewing is recommended to appreciate the scope. Photo

£8,000-12,000



1040

x1040 ☉

1970 5c. Poinsettia complete unmounted mint 1c. pane of twenty-five, variety **imperforate**. S.G. 253 var/Pierron BMU 506a. Photo

*Four imperforate panes were found in England about a year after issue, which were sold to Bronx dealer Al Coleman. Three panes were split into pairs and blocks and the other was reputed to remain intact.*

£2,500-3,500

## BRITISH AFRICA

x1041

1853-1965 mint and used British Africa collection housed in an old Imperial album with emphasis on mainly used Cape of Good Hope including 1853 blued paper 1d. (3) and 4d. (10) and a block of twelve, 1855-58 white paper 1d. (15), a pair and a block of four on cover, 6d. lilac (17), Woodblock 1d. and 4d. (2), De La Rue 1d. (12), 4d. (11), 6d. (6) and 1/- (3), also Basutoland, Bechuanaland, Gambia, Gold Coast and Kenya, Uganda and Tanganyika; a huge collection in mixed condition but with some fine, worthy of close inspection

£3,500-4,500

## BRITISH ANTARCTIC TERRITORY

x1042 ☉

1963-79 unmounted mint collection complete to 1977 (Jan.), plus Australian Antarctic Territory 1957-73 complete unmounted mint. Cat. £580

£150-180



## BRITISH EAST AFRICA

x1043 ★

1890 (Oct.) - 1896 mint collection including 1890-95 1a., 2½a., 3a., 8a. blue (2, one imperf), 1r. carmine, 2r. (2), 3r. (2, one with stains on reverse and regummed), 4r. (2, one regummed) and 5r. (regummed), 1894 5a. on 8a., 1895 (July) ½a. and 7½a., 1895 (Sept.) 2½a. on 4½a., 1895-96 ½a., 2a., 2½a., 3a., 1r., 2r., 3r. and 5r., and 1896-1901 4r. and 5r. Cat. £1500+

£250-300



1044

x1044 ☼田

1896-1901 1a. red, a block of four from the left of the sheet showing part imprint, variety **imperforate between margin and stamp**, unmounted mint; fine and scarce. S.G. 66 var. Photo

£1,800-2,000



1045

x1045 ★

1897-1903 CC 5r. deep sepia and 10r. yellow-bistre, large part original gum; 5r. with some discolouration to reverse and a gum bend though not detracting from the fine appearance. Signed Silvo Sorani and with a photocopy of the certificate (1988) for the set of three (5r. to 20r.). S.G. 96-97, £900. Photo

£400-500



**BRITISH GUIANA**



1046



1047

- x1046 ○ 1852 1c. black on magenta, good to large margins, cancelled by part clear “DEMERARA JY 05 55” datestamp; slightly rubbed in places. S.G. 9, £5,500. Photo £500-600
- x1047 ○ 1853-59 1c. vermilion, large to enormous margins, cancelled by Demerara 1855 datestamp, signed A. Diena. S.G. 11, £1,700. Photo £350-450



1048

- x1048 ○ 1854 4c. blue and 1855 4c. pale-blue, both with four margins and cancelled by light Demerara c.d.s; fine. S.G. 19, 20, £1,500. Photo £500-700
- x1049 ☉ 1863-1966 mint collection in a stockbook including 1863-68 perf 12½-13 1c., 1876 CC 2c., 12c. and 24c., 1878 with two horizontal bars 1c. on 6c., 1882 CA 2c. and 4c., 1888-89 1c. to 72c. and \$5 with some duplication and additional values in blocks, 1889 1c. to 96c., 1898 Jubilee 1c. to 15c., 1900-03 CA 48c., 1905-07 60c. (2) and 96c., 1905 \$2.40, 1907-10 2c. to 12c., 1913-21 MCA to 96c. (4), 1921-27 Script to 72c., 1931 Centenary, 1934 1c. to \$1, 1938-52 1c. to \$3 with most perf changes, 1954-63 1c. to \$5 and 1963-65 3c. to \$2, some duplication (a few with gum toning) and virtually all unmounted. Cat. £3400+ £800-1,000
- x1050 ★ 1889-1966 mint collection including 1899 1c. to 96c. with listed shades, 1898 Jubilee 1c. to 15c., 1899 2c. on 15c. with **no stop after “cents”**, 1900-03 CA 1c. to 60c., 1905-07 MCA 1c. to 96c., 1905 \$2.40, 1913-21 MCA 1c. to 96c., etc., chiefly fine. Cat. £2,000+ £500-700



1051

- x1051 ★ 1938-52 \$1 bright violet, perf 14½x13, fine very lightly mounted mint. S.G. 317a, £550. Photo £120-150

## BRITISH HONDURAS



Ex 1052

x1052

1842-1952 specialised collection nicely written up on pages commencing with 1842 stampless covers (3), a couple of 1858 Great Britain 6d. lilac used in Belize, 1865 1d. to 1/- mint and also overprinted "SPECIMEN", 1d. also block of four, 1872-73 CC 3d. and 1/- plate proofs, 1879 1½d. die proof marked "BEFORE HARDENING" and dated "May 16 1879", 1894 ½d. Postcard Registered, 1882-87 4d. die proofs (2), surcharges in full panes, a range of postcards used and also some printed "SPECIMEN", 1891-98 1c. to 5c. and 10c. strips of five each overprinted "SPECIMEN", 1899-1901 set to \$5 issued and overprinted "SPECIMEN", 1902-06 set to \$5 overprinted "SPECIMEN", 1909-11 set to \$5, some other plate proofs, printer's samples, 1935 Jubilee with listed varieties, Postage Dues overprinted "SPECIMEN", etc. A lovely lot for the specialist. Photo

£5,000-7,000



Ex 1053

x1053 ☉

1865-1969 mint collection in a stockbook including 1865 no watermark 1d. (2, both regummed), 1872-79 CC perf 12½ 1d. and 3d. and perf 14 1d., 3d. and 1/- (2), all regummed, 1882-87 CA 1d. blue (2), 1d. rose (2), 6d. and 1/-, 1888 (Jan.) CC 2c. on 1d., 1888 CA2c. on 1d., 10c. on 4d. (2) and 20c. on 6d. (2), 1888 (Mar.) "TWO" on 50c. on 1/-, 1888 (May) 1c. on 1d. to 50c. on 1/- with some duplication, 1891-1901 to \$1 (2), \$2 and \$5 plus 24c. block of four, 1899 "REVENUE" 12mm. long 5c. to 50c. on 1/- and 11mm. long 10c. and 50c. on 1/-, 1904-07 MCA \$1 and \$2, 1913-21 MCA 50c. to \$5, 1922-33 to \$5, 1922 Relief Fund and then complete from 1935, the vast majority unmounted. Cat. £5,700+. Photo

£1,200-1,500

## BRITISH POST OFFICES IN SIAM

- x1054 ○ 1882 mainly used selection of "B" overprints on an album page including 1882 CC 6c., 10c. and 24c. (2), 1882 CA 2c. to 10c., 1883 2c. and 4c. mint and 5c., 12c. used etc., chiefly fine £500-700

## BRITISH SOLOMON ISLANDS

- x1055 ☼ 1907-68 mint collection in a stockbook, complete less 1914 10/-, 1927 1/- and 1968 (May) 2c., some duplication including Large Canoes to 1/- and 1914 £1, virtually all unmounted, fine. Cat. £2100+ £600-800

## BURMA



Ex 1056

- x1056 ★ 1937 3p. to 25r. set of eighteen, large part original gum, fine. S.G. 1-18, £2,750. Photo £900-1,100

### Official Stamps



Ex 1057



Ex 1058

- x1057 ★ 1937 3p. to 10r. set of fourteen, fine unmounted mint. S.G. O1-O14, £950. Photo £400-500
- x1058 ★ 1937 3p. to 10r. set of fourteen, large part original gum, fine. S.G. O1-O14, £950. Photo £350-450



## BUSHIRE



1059

- x1059 ☒ 5ch. red postcard of Persia overprinted "Bushire under British Occupation", addressed locally and cancelled by "BOUCHIR (DEPART) 18.VIII.15" c.d.s.; fine and scarce. Mehrdad Sadri Persiphila Certificate (2015). Photo

£700-900

## CAMEROONS

- x1060 Ⓢ 1915 ½d. on 3pf. (6 including two vertical pairs), ½d. on 5pf (2), 1d. on 10pf. (9, all with blue surcharge, one with thin serifs), 2d. on 20pf (2), 2½d. on 25pf., 3d. on 30pf. (2), 4d. on 40pf., 6d. on 50pf., 8d. on 80pf., 1s. on 1m., 2s. on 2m. (2), 3s. on 3m. (2) and 5s. on 5m. (2), fine mint with most unmounted. S.G. B1-B13, £1740

£500-600



1061

- x1061 Ⓢ 1915 3d. on 30pf. black and orange on buff, variety surcharge triple, two albino and with off-set on reverse, fine unmounted mint. S.G. B6b, £475. Photo

£150-180

**CANADA**



1062



1063

- x1062 ① 1851 12d. vermilion “Scar” die proof on India paper, good margins and bright colour; small sealed tear and thin at top right corner, nevertheless a scarce colour trial. Unitrade 3TC, \$8,500. Photo £700-900
- x1063 ①② 1851-57 12d. black plate proof on India paper mounted on card, overprinted “SPECIMEN” vertically in carmine; fine and scarce. Vincent Greene Certificate (1997). Unitrade 3Pi \$2,500. Photo £700-900



1065



1064



1066

- x1064 ★ 1893 perf. 12 20c. vermilion, mounted mint example from the bottom of the sheet with part imprint; selvedge reinforced by hinge, a well-centred example. S.G. 115, £250+. Photo £90-110
- x1065 ★ 1897-98 ½c. black **imperforate pair**, lightly mounted original gum. S.G. 142a, £475. Photo £150-200
- x1066 ★ 1897-98 8c. orange **imperforate pair**, large part original gum. Sismondo Certificate (2009). S.G. 148a, £475. Photo £150-200



1067

- x1067 ④ 1898-1902 1c. grey green, marginal example from the upper left of the sheet, well-centred, unmounted mint. Unitrade 75, \$200. Photo £100-150

Canada - *contd.*



1068



1069

- x1068 ★ 1898-1902 5c. slate-blue **horizontal imperforate pair** on bluish paper, unused without gum; fine. Sismondo Certificate (2004). S.G. 157a, £1,000. Photo £300-400
- x1069 ★ 1898-1902 10c. deep brownish purple **horizontal imperforate pair**, large part original gum. Sismondo Certificate (2009). S.G. 164a, £1,000. Photo £450-550



1070



Ex 1071

- x1070 ★ 1898 Christmas 2c. black, lavender and red **imperforate pair** without gum as usual; scarce only two-hundred pairs printed. S.G. 166a, £400. Photo £200-250
- x1071 ★ 1903-12 1c. to 50c. set of seven, large part original gum; 50c. diagonal gum bend. S.G. 173-187, £1,100. Photo £400-500



1072

- x1072 ★田 1924 coil 3c. carmine block of four, large part original gum. S.G. 258a, £500. Photo £200-300



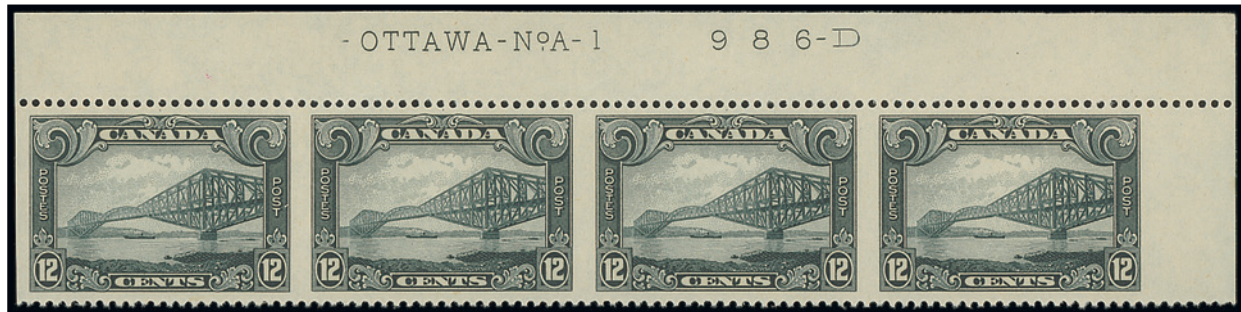


Ex 1073

x1073 ☉

1928-29 1c. to \$1 set of eleven, unmounted mint **imperforate pairs**; fine and scarce. S.G. 275-285 var, see note below S.G. 287, £2,500+. Photo

£1,100-1,300



1074

x1074 ★

1928-29 12c. grey-black strip of four from the top of the sheet with imprint, variety **imperforate between stamps**, lightly mounted in the margin only; small thin to third stamp, fine and scarce. S.G.282 var, note below S.G. 287. Photo

£250-350



1075



1076

x1075 ★

1937-38 13c. blue, **vertical imperforate pair**, lightly mounted mint. Sismondo Certificate (2007). S.G. 364 var, £700. See footnote after S.G. 367. Photo

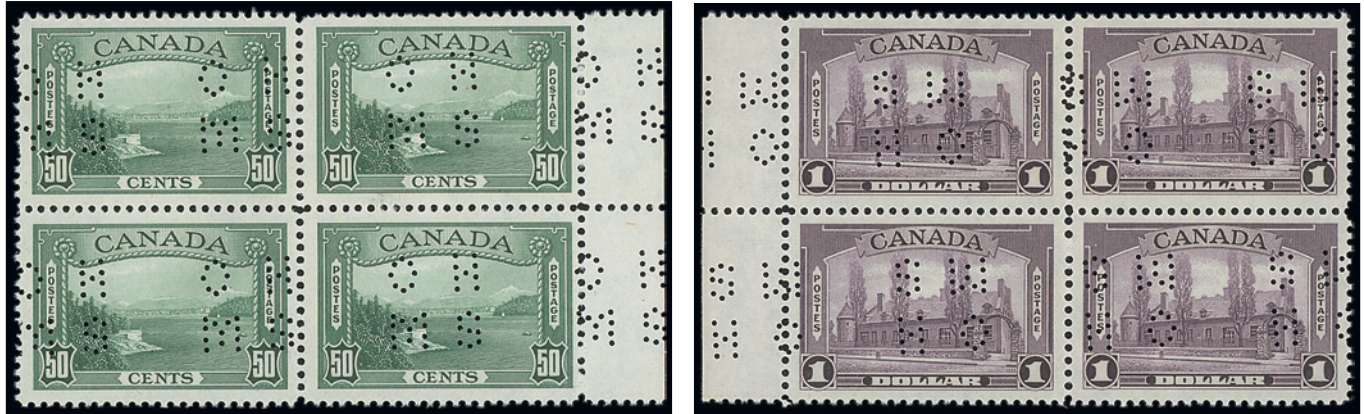
£200-400

x1076 ☉★

1943 Air 7c. horizontal pair **imperforate at margin**, lightly mounted mint; ten examples known from one plate 4. Unitrade C8i, \$1,000. Photo

£200-400

Canada - *contd.*



Ex 1077

x1077 ☼田

1939 10c. to \$1, perforated type O2, unmounted mint blocks of four, 13c. to \$1 marginal examples; scarce as blocks of four. S.G. O120-O130, £1,280+. Photo

£700-900

Postage Dues



1078

x1078 ★田

1906 2c. violet block of four from the left of the sheet with **full type D lathework**; pre-cancelled in violet, large part original gum, fine and very scarce. Untrade \$6,000 for a mint block of four. Photo

£500-700



For additional lot images please visit  
**SPINK.COM**



## CAPE OF GOOD HOPE

### 1853 Deeply Blued Paper



1079



1080



1081

- |         |                                                                                                                                                                                                    |          |
|---------|----------------------------------------------------------------------------------------------------------------------------------------------------------------------------------------------------|----------|
| x1079 ○ | 1d. pale brick-red block of four with clear to very large margins, fine impression of the ivory head on reverse, both pairs neatly cancelled. S.G. 1, £1,800. Photo                                | £400-600 |
| x1080 ○ | 1d. deep brick-red pair with large to enormous margins, cancelled by a single strike of the obliterator, fine. S.G. 1a, £950. Photo                                                                | £300-500 |
| x1081 ○ | 1d. deep brick-red parallelogram pair with <b>watermark sideways</b> , large to very large margins, light strike of the cancellation, very fine. Brandon Certificate (2006). S.G. 1b, £1000. Photo | £600-700 |

### 1853 Slightly Blued Paper



1082

- |         |                                                                                                                            |          |
|---------|----------------------------------------------------------------------------------------------------------------------------|----------|
| x1082 ○ | 1d. brick-red block of three with clear to large margins and clear strikes of the obliterator, fine. S.G. 3, £1,050. Photo | £300-500 |
|---------|----------------------------------------------------------------------------------------------------------------------------|----------|

### 1855-64 White Paper

- |         |                                                                                                                                                                                         |              |
|---------|-----------------------------------------------------------------------------------------------------------------------------------------------------------------------------------------|--------------|
| x1083 ○ | 1d. brick-red, 1d. rose, 1d. deep rose (10 comprising a strip of three signed A. Diena, two pairs and three singles); some minor imperfections, nevertheless a fine group. S.G. 5-5b    | £900-1,100   |
| x1084 ○ | 4d. blue used selection (25) comprising six single examples, four pairs, a block of three, a block of four and four single examples used on covers, some minor imperfections. S.G. 6-6a | £1,000-1,200 |
| x1085 ○ | 6d. pale rose-lilac, a selection of five used examples each in a differing shade, each with good margins and three are signed A. Diena, Köhler and Pfenninger respectively. S.G. 7-7d   | £300-500     |



Cape of Good Hope, 1855-64 White Paper - *contd.*



1086



1087

- x1086 ★ 1/- deep dark green pair with good to very large margins, unused with part original gum, fine. S.G. 8b, £900. Photo £450-550
- x1087 ★ 1/- deep dark green with large margins, part original gum, and a pair with large to enormous margins, large part original gum, fine. S.G. 8b, £1,350. Photo £500-700

1861 Woodblocks



1088



1089



1090

- x1088 ○ 1d. carmine, two large margins and just cut into at base, fine used example. R.P.S. Certificate (1998), S.G. 13a, £3,500. Photo £500-700
- x1089 ○ 4d. pale milky blue, good to large margins and clear cancellation; repaired at lower right as per B.P.A. Certificate (1996). S.G. 14, £2,000. Photo £400-600
- x1090 ○ 4d. deep bright blue, clear to good margins, lightly cancelled; fine and scarce. S.G. 14c, £5,000. Photo £700-800

1863-64 De La Rue



1091

- x1091 ○ 1d. deep carmine-red used block of four with clear to large margins, each pair lightly cancelled, fine. S.G. 18, £1,300. Photo £500-600
- x1092 ○ 1d. deep carmine-red, used selection (16) comprising twelve single examples and two pairs; each with good to large margins, some small faults. S.G. 18, £5,000+ £500-600



Ex 1093



1094

- x1093 ★ 1d. deep carmine, 4d. deep blue, 6d. bright mauve and 1/- bright emerald-green with part original gum; good to enormous margins and each signed A. Diena, a fine set. S.G. 18-21, £1,700. Photo £700-800
- x1094 ★ 4d. deep blue block of four with good to large margins, unused with part original gum; a couple of small natural wrinkles. S.G. 19, £1,200. Photo £400-500
- x1095 ○ 1/- bright emerald-green, five used examples with clear to large margins, three are lightly cancelled, two with heavier cancellations. S.G. 21, £3,500 £400-600



1096

- x1096 ★ 1/- pale emerald-green, fine unused example with part original gum; good to large margins. Signed A. Diena. S.G. 21a, £1,400. Photo £600-700



Ex 1097

- x1097 ☼ 1902-04 ½d. to 5/- set of nine in blocks of four, fresh unmounted mint; each stamp with tiny "v.d." handstamp on reverse. A scarce and attractive set. S.G. 70-78. Photo £1,400-1,600

## CAYMAN ISLANDS



Ex 1098

x1098 ☉

1900-70 mint collection in a stockbook including 1902-03 CA 1d. (2), 2½d., 6d. (3) and 1/-, 1905 MCA ½d. to 1/- (2 sets), 1907 4d. to 5/-, 1907 (Aug.) ½d. on 1d. (2), 1907 (Nov.) ½d. on 1/- (2) and 1d. on 5/- (gum toned), 1907-09 MCA ½d. to 6d. (3), 5/- block of four and CA 1/- (3) and 10/-, 1913-20 MCA to 2/-, 3/-, 5/- and 10/- (4), 1921-26 MCA 5/- and 10/- (2) and Script 2/- (2), 3/-, 5/- and 10/- marginal pair, 1932 Centenary set, 1935 ¼d. to 10/- and complete from 1937 onwards, the vast majority unmounted. Cat. £4600+. Photo

£1,500-1,800

x1099 ★

1900-1970 mint collection in a stockbook including 1907 MCA set to 5/-, all 1907 Provisionals, 1907-09 MCA set to 10/-, 1921 MCA and Script sets each to 10/-, 1935 set to 10/-, War Stamps, more modern sets in blocks of four etc. A useful lot with high catalogue value in fine condition

£1,500-2,000



1100

x1100 ☉

1908 (Feb.) "2½D" on 4d. brown and blue, fine unmounted mint. R.P.S. Certificate (1983). S.G. 35, £1800. Photo

£600-800



Ex 1101

x1101 ★

1932 Centenary ¼d. to 10/-, two lightly mounted mint sets. S.G. 84-95, £1,000. Photo

£300-400



Ex 1102

x1102 ★

1935 ¼d. to 10/-, fine lightly mounted mint. S.G. 96-107, £200. Photo

£80-100



**CEYLON**

**1857-59 Issue**



1103



1104



1105

- |         |                                                                                                                             |          |
|---------|-----------------------------------------------------------------------------------------------------------------------------|----------|
| x1103 ○ | 4d. dull rose, used example just cut into at base, clear grid cancellation. R.P.S Certificate (1994). S.G. 4, £4,500. Photo | £700-900 |
| x1104 ○ | 8d. brown, clear to good margins, neatly cancelled by grid obliterator. B.P.A. Certificate (2017). S.G. 7, £1,500. Photo    | £700-900 |
| x1105 ○ | 9d. purple-brown, good to large margins, neat grid cancellation. S.G. 8, £900. Photo                                        | £400-600 |



1106



1107

- |         |                                                                                                                                                                             |              |
|---------|-----------------------------------------------------------------------------------------------------------------------------------------------------------------------------|--------------|
| x1106 ○ | 2/- dull blue with good margins, fine used example. Cérés Certificate (2008). S.G. 12, £1,300. Photo                                                                        | £500-700     |
| x1107 ★ | 1857-64 1/2d. reddish lilac on blued paper, good to large margins, part original gum; horizontal gum bend not affecting appearance, fine and scarce. S.G. 16, £4,250. Photo | £1,300-1,500 |



Ex 1108

- |         |                                                                                                                                                                                                                                                                                                                                                                                                         |              |
|---------|---------------------------------------------------------------------------------------------------------------------------------------------------------------------------------------------------------------------------------------------------------------------------------------------------------------------------------------------------------------------------------------------------------|--------------|
| x1108   | 1857- 1970 mint and used collection on album pages including 1857-59 1d. blue mint and used (also a mint pair), 9d., 10d., 1/-, 1/9d, 2/- all used, 1858 1/2d dull mauve mint and used, 1861-64 issues to 2/- mint, 1863-66 to 2/-, 1872-80 set of eleven mint, 1885 surcharges, most sets complete to 1970; chiefly fine with high catalogue value and worthy of close inspection. Photo for selection | £5,000-8,000 |
| x1109 ★ | 1866-98 mainly mint selection on a page including 1872-80 CC set to 96c. and 1883-98 CA set to 8c. with shades and extras, chiefly fine                                                                                                                                                                                                                                                                 | £100-200     |

Ceylon, 1857-59 Issue - *contd.*



Ex 1110

- x1110 ☼ 1867-1960 mint collection in a stockbook including 1867-68 CC 1d. (2), 1872-80 CC 24c., 1882 20c. on 64c. block of four, 1883-98 CA perf 14 2c. pale brown, 1885 CC perf 14 28c. on 48c. and CA 5c. on 4c. (2), 10c. on 24c. and 15c. on 16c., 1885 5c. on 8c., 10c. on 24c., 15c. on 16c. and 56c. on 96c., 1887 1r.12, 1891 15c. on 25c. (2) and 15c. on 28c. (2), 1893-99 2r.50 (2, one marginal with Current number), 1898-99 1r.50 on 2r.50 and 2r.25 on 2r.50, 1899-1900 1r.50 (2) and 2r.25 (2), 1903-04 CA to 1r.50, 1905-05 MCA 2c. to 2r.25 with some duplication to 2r.25, 1910-11 2c. to 10r. less 50c., 1912-25 MCA 1c. to 20r. with some additional papers/shades, 1921-32 Script 1c. to 5r. less 5c., 1926 (Nov.) 2c. on 3c. with surcharge double, 1927-29 1r. to 20r., 1935-36 2c. to 1r., 1939-49 2c. to 5r. with many perforation changes, 1951-54 2c. to 10r. and Postal Fiscal 1952 10r. (5), the vast majority unmounted, some of the duplication gum toned/toned. Cat. £4300+. Photo
- £1,500-1,800
- x1111 1872-1900 mint and used collection including 1872-80 set to 96c. (4), a nice range of 1885, 1888 and 1890 surcharges with some blocks and varieties, 1893-99 30c, imperf block of four, 1899-1900 set to 2r.25c., a good range of Officials etc; chiefly good to fine
- £1,000-1,200



- 1112 1883-98 CA 4c. rose overprinted "SPECIMEN" in black, part original gum; heavy hinge remainder. S.G. 149s, £475. Photo
- £200-300
- x1113 ★ 1883-98 CA perf. 14 24c. brown-purple, prepared for use but not issued unsurcharged, large part original gum. A. Diena Certificate (1971). S.G. 152, £1,700. Photo
- £500-700
- x1114 ☼ 1912-25 MCA 50r. dull purple, fairly well-centred, fine unmounted mint. S.G. 320, £650. Photo
- £200-250
- x1115 ★ 1912-25 MCA 50r. dull purple, lightly mounted mint. S.G. 320, £650. Photo
- £200-300
- x1116 ☼ 1921-32 Script 100r. dull purple and blue, well-centred, slightly gum toned otherwise fine unmounted mint. S.G. 360, £2750. Photo
- £700-900
- x1117 ★ 1921-32 Script 100r. dull purple and blue, part original gum disturbed. Signed A. Diena. R.P.S. Certificate (1970). S.G. 360, £2,750. Photo
- £1,000-1,200



1118

x1118 ★

1921-32 Script 100r. brownish grey, variety *break in scroll*, corner marginal example from the upper right of the sheet with plate number '1', large part original gum; some gum disturbance. Brandon Certificate (2006). S.G. 359a, £5,500. Photo

£1,500-2,500

### Revenue Stamps



1119

x1119 ★

1938 50r. dull violet and slate-lilac with margin at foot, fresh and fine mint example, one of only two recorded mint examples. Photo

£2,000-2,500



1120

x1120 ☼田

1952 10r. dull green and yellow-orange block of four from the upper left of the sheet, fine unmounted mint. S.G. F1, £400+. Photo

£200-300



## COOK ISLANDS

- x1121 ☉ 1892-1967 mint collection in a stockbook including 1892 1d. (3) and 1½d., 1893-1900 perf 12x11½ 1d. blue, 2½d., 5d. and 10d., perf 11 ½d. (2), 1d. blue, 1d. brown (3), 1½d. (2), 2d. (2), 2½d., 5d., 6d. (3), 10d. (3) and 1/-, 1899 ½d. on 1d., 1902 (Sept.) 1/-, 1932 ½d. to 1/-, 1921-23 2/- to £1, 1924-27 ½d. to 4d., 1936-44 Cowan 2/6d., 5/- and £1, Wiggins Teape 2/6d., 10/- and £3, 1938 1/-, 2/- and 3/-, 1943-54 2/6d. to £5, 1944-46 ½d. to 3/- (1/- gum toned), 1949-61 ½d. to 3/-, 1963 1d. to 5/- and 1966 Air 6d. to £1 with additional £1 (2) with aeroplane omitted and 1967 1c. on 1d. to \$10 on \$5, the vast majority unmounted. Cat. £3500+
- £800-1,000



1122

- x1122 ☉ 1940-44 Wiggins Teape £3 green, fine unmounted mint. KGVI Expertising Certificate (2004). S.G. 123b, £450. Photo
- £120-150

## CYPRUS



Ex 1123

- x1123 ★ 1880-1968 mint collection in a stockbook including 1880 (Apr.) 1d. Pl. 215 corner block of four and corner vertical pair and Pl. 216 (2), 4d., 6d. and 1/- (the last three regummed), 1881 ½d. (17mm.) on 1d. Pl. 174 and ½d. (13mm.) on 1d. Pl. 218, 1881 CC ½pi. block of four (lightly gum toned) and single (2), 1pi. to 6pi. (all apart from 6pi. regummed), 1882-86 CA ½pi. to 12pi., 1882 ½ on ½pi. (regummed) 30pa. on 1pi. (2, regummed?) and CA ½ on ½pi. (3), 1886 CA ½ on ½pi., 1892-94 ½pi. (3), 30pa. (2), 2pi., 4pi. and 12pi., 1894-96 ½pi. to 45pi. (6pi. lightly gum toned), 1902-04 CA ½pi., 30pa. (2), 2pi., 6pi. (2), 12pi. (2), 18pi. (2) and 45pi., 1904-06 MCA 5pa. to 9pi. and 45pi., 1912-25 MCA 10pa. to 45pi. with some shades, 1921-23 Script 10pa. to 45pi. less 30pa. violet and green and MCA 10/- with plate number and £1, 1924-28 MCA £1 (3) and Script ¼pi. to 90pi. (4), 1928 Anniversary, 1934 ¼pi. to 45pi. and apparently complete then onwards with additional 1962 Malaria, 1962 3m. to £1, 1963 Europa, Freedom from Hunger, Scouts and Red Cross sets overprinted "SPECIMEN", the vast majority unmounted. Cat. £20,000 approx. Photo
- £5,000-6,000
- x1124 ★ 1894-1915 mint collection on two hingeless album pages including 1894-96 set to 45pi., 1902-04 set to 45pi., 1904-10 set plus shades, 1012-15 set, part to large part original gum
- £400-600



1125



1126

- x1125 ☉ 1923 MCA £1 purple and black on red, marginal example from the left of the sheet, unmounted mint; signed Bloch in the margin. S.G. 101, £1,400. Photo £600-700
- x1126 ☉ 1928 £5 black on yellow, marginal, mounted in the selvedge only, fine. S.G. 117a, £3750. Photo £1,200-1,500
- x1127 ☉ 1928 Anniversary ¾pi. to £1 set of ten overprinted "SPECIMEN", fine mint. S.G. 123s-132s, £700 £200-250



Ex 1128

- x1128 ☉田 1928 Anniversary ¾pi. to £1 set of ten in mint marginal blocks of four, the majority with plate numbers (excepting 18pi. and £1); each mounted in the margin only, fine. S.G. 123-132, £1,200+. Photo £800-1,000



1129

- x1129 ☉ 1944 1pi. orange, perf 13½x12½, fine unmounted mint. S.G. 154a, £550. Photo £150-180

## DOMINICA

- x1130 ☼ 1874-1970 mint collection in a stockbook including 1874 CC perf 12½ 1d. and 1/-, 1877-79 CC perf 14 ½d., 1d., 2½d. and 6d., 1883-86 CA 1d. and 2½d., 1886-90 CA ½d. (5 including a block of four), 1d. (4), 2½d. and 1/-, 1903-07 CC ½d. to 5/- (1/- with green faded), 1907-08 CA 5/-, 1908-20 MCA ½d. to 5/- with some duplication, 1921-22 Script ½d. to 2/6d. with some duplication, 1923-33 ½d. to £1 with some duplication and 1935 onwards complete, the vast majority unmounted. Cat. £3100+ £800-1,000
- x1131 ★ 1903-1933 mint selection comprising 1903-07 CC ½d. to 5/- set of ten, 1907-08 MCA ½d. to 5/- set of ten, 1914 5/-, 1921-22 Script ½d. to 2/6d. set of eight and 1923-33 ½d. to £1 set of twenty-one; chiefly fine. S.G. 27-36, 37-46, 54, 62-70 and 71-91 £300-400



Ex 1132

- x1132 ★ 1923-33 ½d. to £1 set of twenty-one, four mint sets; chiefly lightly mounted mint. S.G. 71-91, £1,500. Photo £500-600

# SPINK LIVE

Spink Live is now running on a new and improved bidding platform

Accessible online through [www.spink.com](http://www.spink.com) and also available iOS and Android devices

Bidding on 'Spink Live' remains free of charge



Download on the  
App Store

GET IT ON  
Google Play



MY ACCOUNT

- Login
- Consign An Item
- Watched Lots
- My Bids

Click to Login / Register

- ☒ Medals
- ☒ Stamps
- ☐ Watches
- ☒ Whiskies & Spirits
- ☒ Wines

Tick your Interests

Lot 3 - 3  
SEAL 5 songs, including all  
US\$7,000

Lot 4 - 4  
RANDY CRAWFORD & JOE SAMPLE, 4  
US\$7,000

Scroll the Lots

Lot 2010 - CURRENT B

Slide to bid €

CURRENT HISTORY

Slide to Bid

For any enquiries or further assistance please contact:  
Tel: +44 (0)20 7563 4112 | Email: [spinklive@spink.com](mailto:spinklive@spink.com)

# SPINK

WHERE HISTORY IS VALUED



## FALKLAND ISLANDS



Ex 1133

x1133 ☉

1878-1972 (June) mint collection in a stockbook including 1878-79 1d. (regummed), 4d. (lightly stained and regummed), 6d. and 1/- (2), 1891-1902 ½d. (10), 1d. (11), 2d. (7), 2½d. (3), 4d. (5), 6d. (4), 9d. (2) and 1/-, 1898 2/6d. and 5/-, 1904-12 MCA ½d. to 5/- (2), 1912-20 MCA ½d. to £1 with some duplication including 3/-, 5/- maroon (3) and £1, 1921-29 Script ½d. to 3/- (3) with some shades, 1929-37 ½d. to £1 with additional 10/- and £1, 1932 Centenary ½d. to £1 with additional 5/- (2), 1938-50 ½d. to £1 with additional 5/- (3), 10/- (5) and £1 (3) and 1946 onwards complete, also Dependencies 1946-49 Thick Maps ½d. to 1/- in blocks of four and singles, Thin Map ½d. to 1/-, 1946 Victory pair perforated "SPECIMEN" and 1954-63 ½d. to £1, and South Georgia 1963-69 ½d. to £1 (both) and 1971 ½p. on ½d. to 50p. on 10/-, the vast majority unmounted. Cat. £19,000+. Photo

£6,000-8,000



1134

x1134 ☉

1898 CC 2/6d. and 5/-, both overprinted "SPECIMEN", lightly mounted mint. S.G. 41s-42s, £550. Photo

£250-300

x1135 ★

1912-28 mint collection written up on pages with a range of listed shades and perforations including 5/- deep rose-red, 5/- reddish maroon, 5/- maroon, £1 black and red, War Stamps and 1921-28 to 3/-, a nice lot for the specialist

£800-1,000

Falkland Islands - *contd.*



Ex 1136



1137



1138



1139



- |         |                                                                                                                   |              |
|---------|-------------------------------------------------------------------------------------------------------------------|--------------|
| x1136 ★ | 1913-20 MCA ½d. to £1, lightly mounted mint; fine. S.G. 60-69, £1,000. Photo                                      | £350-450     |
| x1137 ★ | 1933 Centenary 10/- black and chestnut, very lightly mounted mint. S.G. 137, £850. Photo                          | £300-400     |
| x1138 ☉ | 1932 Centenary £1 black and carmine, fine unmounted mint. S.G. 138, £4250. Photo                                  | £1,500-1,800 |
| x1139 ☉ | 1938-50 5/- indigo and pale yellow-brown, fine unmounted mint. B.P.A. Certificate (1969). S.G. 161b, £1100. Photo | £400-500     |

## FIJI



Ex 1140

- |         |                                                                                                                                                                                                                                                                                                                                                                                                                                                                                                                                  |              |
|---------|----------------------------------------------------------------------------------------------------------------------------------------------------------------------------------------------------------------------------------------------------------------------------------------------------------------------------------------------------------------------------------------------------------------------------------------------------------------------------------------------------------------------------------|--------------|
| x1140 ☉ | 1878-1970 mint collection in a stockbook including 1878-99 perf 12½ 1d. and 2d., perf 10 4d. and 6d., 1881-99 perf 11 1/- and perf 11x11¼ 1/- strip of five, 1892-93 ½d. on 1d., 1903 CA ½d. (gum toned) to £1 with some duplication (many gum toned/toned) including 5/- (2) and £1, 1904-09 MCA 1d. and 1/-, 1908-12 ½d. to £1 less 6d., 1912-23 MCA ¼d. to £1 (4, three die II), 1922-27 Script ¼d. to 5/- less 1d. carmine-red, 1938-55 ½d. to £1 and 1946 onwards complete, the vast majority unmounted. Cat. £4000+. Photo | £1,200-1,500 |
|---------|----------------------------------------------------------------------------------------------------------------------------------------------------------------------------------------------------------------------------------------------------------------------------------------------------------------------------------------------------------------------------------------------------------------------------------------------------------------------------------------------------------------------------------|--------------|



Ex 1141

- |         |                                                                                                             |          |
|---------|-------------------------------------------------------------------------------------------------------------|----------|
| x1141 ★ | 1912-23 MCA ½d. to £1 set of thirteen, four sets; chiefly lightly mounted mint. S.G. 125-137, £1,200. Photo | £400-500 |
|---------|-------------------------------------------------------------------------------------------------------------|----------|

**Postage Dues**



Ex 1142

x1142 田

1940 1d. to 1/6d. set of eight in unmounted mint blocks of four; fine. S.G. D11-D18, £560+. Photo

£300-400

**GAMBIA**

x1143 田

1869-1966 (Feb.) mint collection in a stockbook including 1869-72 no watermark 4d. (3) and 6d. all without gum, 1874 CC 4d. and 6d. both without gum, 1886-93 CA ½d. (3), 1d. (3), 2d. (5 including a corner pair), 2½d. (2), 3d. (4 including a pair), 4d. (2), 6d. (4) and 1/- (2), 1898-1902 ½d. to 1/-, 1902-05 CA to 3/-, 1904-06 MCA to 2/-, 1906 ½d. on 2/6d. and 1d. on 3/- (2), 1909 MCA to 2/6d. (3) and 3/-, 1912-22 MCA ½d. to 5/-, 1921-22 Script ½d. to 4/- (2), 1922-29 MCA 4d. to 5/- (3) less 7½d. and Script ½d. to 10/- (3) and 1935 onwards complete, the vast majority unmounted. Cat. £6000 approx.

£1,500-1,800

**GIBRALTAR**

x1144

1857-1977 mint and used collection in Yvert album beginning with a nice section of Great Britain used in Gibraltar with eleven covers and a number of "G" obliterations along with a quantity of stamps cancelled "A26" (60+ stamps in all); 1886 overprint set to 6d. and definitive set to 1/- both mint, 1912 and 1921 sets both to £1, 1912 4/- and £1 each in block of four with plate number, most complete sets then to 1977 followed by sections of British Levant and Morocco Agencies; a nice old collection in mixed condition, viewing recommended

£2,500-3,500





Gibraltar - *contd.*



Ex 1145

x1145 ☉

1886-1971 mint collection in a stockbook including 1886 (Jan.) ½d. to 1/-, 1886-87 ½d. to 1/- with additional ½d., 1d. and 2d., 1899 5c. on ½d. to 75c. on 1/- with additional 25c. on 2d. showing broken "N", 1889-96 5c. to 5p. (2), 1898 ½d. to 1/- with additional 6d. (2), 1903 CA ½d. to £1 with additional 4/- (3, one with plate number and one lightly gum toned), 1904-08 MCA ½d. (2), 1d., 2d. (5), 2½d. (3, one with plate number), 6d. (2), 4/- (3) and £1, 1906-11 MCA ½d., 1d. (2), 2d. (2), 2½d.), 1/-, 2/- (2), 4/- (2) and 8/-, 1912-24 MCA to 1/- (5), 2/-, 4/-, 8/- and £1 (2), 1921-27 Script ½d. to 8/- with additional 2/- (3), 1925-32 1/- (2), 2/-, 2/6d. (2), 5/- (2), 10/- (2), £1 and £5 (R.P.S. Certificate, 1991), 1931-33 ½d. to 3d., 1938-51 ½d. to £1 with many perforation changes including 1½d. carmine perf 13½ (gum bend), 2d. grey perf 13½ watermark sideways (some slightly trimmed perfs as usual), 3d. perf 14 and 6d. perf 14, 1949 Wedding £1 (2) and 1953-69 complete, virtually all unmounted. Cat. £12,000+. Photo

£4,000-5,000

x1146 ★

1886-1975 virtually complete mint collection on album pages with just a very few used, of note are the 1886 overprint set to 1/- (6d. and 1/- used), 1886 definitive set to 1/-, 1903 set to £1, 1904-08 set to £1, 1925-32 set to £5 (£5 with Horst Pröschold Certificate) etc; chiefly fine and large part original gum

£2,500-3,000



Ex 1147

x1147 ★

1886-87 ½d. to 1/- set of seven, part original gum, fine. S.G. 8-14, £600. Photo

£250-350



1148

x1148 ★

1889-96 10c. carmine variety **value omitted**, large part original gum; fine and fresh, very scarce. R.P.S. Certificate (1977). S.G. 23b, £7,000. Photo

£3,000-4,000



1149

x1149 ☒

1912 (24 Sept.) envelope registered to Germany bearing 1911 6d. dull and bright purple tied by oval "REGISTERED 24 SE GIBRALTAR" datestamp, Plymouth oval transit and Braunschweig arrival on reverse; scarce stamp used on cover. Briefmarkenprüfstelle Certificate (1999). S.G. 70. Photo

£300-400



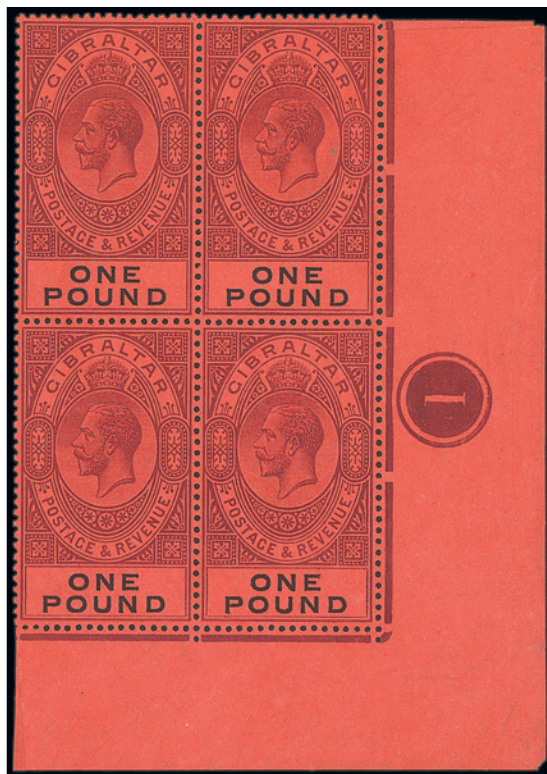
1150

x1150 ☒

1912 (26 Nov.) "Richard Borek, Braunschweig. Einschreiben!" printed envelope registered to Germany via Plymouth, bearing 1912 6d. dull and bright purple and 1912-24 6d. dull purple and mauve each tied by oval "REGISTERED 26 NO 12 GIBRALTAR" datestamp, Plymouth transit and Dresden arrival marks on reverse; fine and scarce on cover. Signed Köhler and with Briefmarkenprüfstelle Certificate (1999). S.G. 70, 80. Photo

£300-400

Gibraltar - *contd.*



1151

x1151 ⊕田

1912-24 MCA £1 dull purple and black on red, unmounted block of four from the lower right of the sheet with plate number; small spot on top right stamp and small amount of margin added at upper right, a scarce multiple. S.G. 85, £560. Photo

£300-400



1152

x1152 ⊕

1925 £5 violet and black with margin at foot, fresh and fine unmounted mint. Brandon Certificate (2001). S.G. 108, £1600. Photo

£500-600



1153

x1153 ⊕

1925-32 £5 violet and black, unmounted slightly toned gum; fine. S.G. 108, £1,600. Photo

£600-700



## GILBERT AND ELLICE ISLANDS



Ex 1154

1155

- x1154 ☉ 1911-70 mint collection in a stockbook including 1911 (Jan.) ½d. to 1/-, 1912-24 MCA ½d. to 2/-, 5/- (2) and £1, 1922-27 Script 10/- (2) and 1935 onwards complete (with additional 1946 Victory pair perforated "SPECIMEN") less 1970 UN and Christmas Sketches, the vast majority unmounted, some duplication (a few gum toned/toned). Cat. £1500+. Photo £500-600
- x1155 ☉ 1912-24 £1 purple and black on red, unmounted mint; also an example of the same stamp overprinted "SPECIMEN". S.G. 24, 24s. Photo £250-350

## GOLD COAST



Ex 1156

- x1156 ☉ 1875-53 mint collection in a stockbook including 1875 CC perf 12½ 4d., 1876-84 CC perf 14 1d. and 2d., 1883 CA ½d., 1884-91 ½d. (4, one gum toned), 1d. (4), 2d. (3), 2½d. (5), 3d. (5, one gum toned), 4d. (7 including a block of four - one with thin), 6d. (2), 1/- (3, one gum toned) and 2/- (3, one gum toned), 1889 1d. on 6d., 1889-94 5/- (2), 10/- and 20/- mauve and black on red, 1898-1902 CA ½d. to 10/- (greens a little faded), 1902 CA ½d. to 20/- with additional 5/- and 20/- with plate number, 1904-06 MCA ½d. to 2/6d., 1907-13 MCA ½d. to 5/- with additional 2/6d. marginal interpanneau pair and single, 1913-21 MCA ½d. to 20/- with some shades, 1921-24 Script ½d. to 15/- (both dies) with additional 5/- (3), 1928 ½d. to 5/- and 1935 onwards complete, the vast majority unmounted. Cat. £4800+. Photo £1,200-1,500



1157

1158

- x1157 ★ 1889-94 20/- green and red, large part original gum; light diagonal gum bend not detracting from its fine appearance. B.P.A. Certificate (2009). S.G. 24, £3,500. Photo £1,500-2,000
- x1158 ★ 1889-94 CA 20/- green and red, lightly mounted mint, a lighter shade of green. Philatelic Foundation Certificate (1956). S.G. 24, £3,500. Photo £1,500-1,700

## Gold Coast - *contd.*

x1159 ☉

A small collection comprising 1938-43 set to 10/- in unmounted blocks of four, 1938-43 ½d. to 3d. and 1/3d. strip of three each perforated "SPECIMEN", 1947 (30 June) pair of covers registered to the U.S.A., one with 1940 5/- block of four and the other with 1940 10/- block of four; 1948 set to 10/- unmounted mint and 1948 set to 10/- in marginal mint blocks of four; fine

£400-500

## GRENADA

x1160 ☉

1883-1969 mint collection in a stockbook including 1883 ½d. (2), 2½d., 4d., 6d. (2) and 8d. tête-bêche pairs, 1891 (Jan.) 1d. on 8d. tête-bêche pair, 1895-99 ½d. to 1/- with some duplication, 1902 CA 1/-, 5/- and 10/- marginal with plate number, 1904-06 MCA to 5/- and 10/-, 1908 CA 1/- (2) and 10/-, 1908-11 MCA 2/- and 5/-, 1913-22 MCA to 10/- (2), 1921-31 Script ½d. 10/- with some additional values including 2/6d. corner plate number block of four, 3/- block of four and singles (2), 5/- (2) and 10/- (2), 1934-36 ½d. to 5/- and 1935-66 complete with many 1938-50 perf changes, virtually all unmounted. Cat. £3000+

£800-1,000



Ex 1161

x1161 ★

1938-50 10/-, the seven printings as listed by Stanley Gibbons, chiefly fine and lightly mounted. S.G. 163-163f, £1,560. Photo

£450-550



Ex 1162

x1162 ★

1950 2½d. bright blue **perforated 12½x13½**, lightly mounted mint example of this rare stamp; offered along with a fine used example of the same. B.P.A. Certificate (1959). S.G. 157a, £11,000+. Photo

£5,000-7,000

## HONG KONG



Ex 1163

x1163 ☉

1862-1982 mint collection in a stockbook including 1862-63 no wmk 2c., 8c., 12c. and 18c., all regummed, 1865-71 CC 2c., 4c., 8c., 12c. (3), 30c. vermilion, 48c. and 96c., all regummed, 1880 CC 2c. and 5c. (2), all regummed, 1882-96 CA 2c. (3), 4c. (4), 5c. (3), 10c. dull mauve, 10c. green, 10c. purple on red (2) and 30c. (3), 1885 (Sept.) 20c. on 30c., 1891 7c. on 10c., 14c. on 30c. (3), 20c. on 30c. grey-green and \$1 on 96c., with Chinese characters 20c. on 30c. grey-green, 50c. on 48c. (2) and \$1 on 96c. (2), 1891 Jubilee 2c. (B.P.A. Certificate, 2004), 1898 with Chinese characters \$1 on 96c. grey-black, 1900-01 2c. to 30c. (2 sets), 1903 CA to \$1, 1904-08 MCA to \$3, 1907-11 1c. to \$2 less 10c., 1912-21 MCA 50c. to \$10, 1921-37 Script 1c. to \$5 with additional \$3 and \$5, 1938-52 1c. to \$10 complete with additional \$2 red-orange and green, \$2 reddish violet and scarlet (2), \$5 dull lilac and scarlet (2), \$5 violet and green (3, one yellowish), \$10 lilac and blue (4), 1941-69 complete less 1965 ICY and Postal Fiscal 1891 \$5 on \$10, the vast majority unmounted. Cat. £25,000+. Photo

£7,000-9,000



1164



Ex 1165



Ex 1166



x1164 ★

1876-77 28c. on 30c. mauve, small part original gum. C. Roussin expertising stamp on reverse. S.G. 21, £1,600. Photo

£350-450

x1165 ★

1882-86 CA 2c. to 30c. yellowish-green set of seven, part original gum and 1900-01 CA 2c. to 30c. set of six with part original gum. S.G. 33-39, 56-61, £1,700+. Photo

£800-1,000

x1166 ★

1891 with Chinese characters 20c. on 30c. yellowish green, 50c. on 48c. dull purple and \$1 on 96c. purple on red; each with part original gum, fine. S.G. 48-50, £585. Photo

£200-250



Ex 1167



1168

x1167 ★

1903 CA 1c. to \$10, part original gum, fine. S.G. 62-76, £3,000. Photo

£1,000-1,200

x1168 ☉

1903 CA \$10 slate and orange on blue, interpanneau marginal example from the foot of the sheet, unmounted mint; fine and attractive positional piece. S.G. 76, £1,400. Photo

£600-700



**Hong Kong - contd.**



Ex 1169

1170

- x1169 ★ 1904-06 MCA 2c. to \$5 and 1907-11 1c. to \$2, part original gum, fine. S.G. 77-89, 91-99, £2,000. Photo £800-1,000
- x1170 ★ 1904-06 MCA \$10 slate and orange on blue, large part original gum, fine. A.P.S. Certificate (1999). S.G. 90, £1,900. Photo £800-1,000



Ex 1171



Ex 1172

- x1171 ★ 1912-21 MCA \$10 purple and black on red, three examples each with large part original gum, fine. S.G. 116, £1,800. Photo £600-700
- x1172 ★ 1921-37 Script 1c. to \$5 green and red, part original gum, fine. S.G. 117-132, £1,000. Photo £450-550

**Postal Fiscal Stamps**



1173



1174



1175



Ex 1176

- x1173 ★ 1874-1902 perf 15½x15 \$2 olive-green, large part original gum; a couple of small tone spots on reverse just visible through the front of the stamp. S.G. F1, £425. Photo £180-220
- x1174 ★ 1874-1902 perf. 14 \$3 dull mauve, large part original gum, fine. S.G. F5, £700. Photo £250-350
- x1175 ★ 1891 \$5 on \$10 purple on red, large part original gum, fine. S.G. F9, £400. Photo £180-220
- x1176 ★ 1864 24c. green (shades), two unused examples, one with part original gum, the other without gum. S.G. 14 group, £1,300+. Photo £250-350

British Post Offices in China



1177

x1177 △

1917-21 \$5 green and red on blue-green and \$10 purple and black on red used on piece, tied by "LIU KUNG TAU" c.d.s., the \$10 an upper marginal example. S.G. 16-17, £1,050+. Photo

£400-500



1178

x1178 ★

1917-21 \$10 purple and black on red, marginal example from the foot of the sheet, part original gum, fine. S.G. 17, £700. Photo

£250-350



## INDIA AND STATES

x1179

1854-1940 mint and used on pre-printed album pages including India 1854 to 2a., 1895 to 5r. mint, 1902-09 with values to 5r., 1911-13 with values to 25r., States a little sparse but with values to 10r. mint and plenty of useful material throughout; viewing recommended

£1,000-1,500



Ex 1180

x1180 ★

1902-11 3p. to 25r. with additional 3r., large part original gum; 5r. some toning. S.G. 119-147, £3,750. Photo

£1,500-1,700

### Telegraph Stamps



Ex 1181

x1181 ☉

1869-78 set of twelve to 50r., 1r. and 10r. Die I, others Die II, unmounted mint, some toning; fine, a seldom offered set. S.G. T4-T20. Photo

£1,500-1,700



**Official Stamps**



1182

x1182 ★

1867-73 6a. 8p. slate, prepared for use but not issued, horizontal pair from the left of the sheet showing part imprint; large part toned gum. S.G. O30b, £1,400. Photo

£400-500



1183

x1183 ☼ ㊦

1874-82 2a. orange interpanneau marginal block of eight with part imprint at right margin and lower interpanneau margin showing pattern; unmounted mint, some light tone spots in places. S.G. O33a, £680. Photo

£300-350



1185

x1184 ☼

1860-1967 mint collection in a stockbook including 1860-70 3d. and 1/-, 1883-97 CA 1d. carmine pairs (2), 2d. slate pair, 2/- and 5/-, 1890-91 2½d. on 4d., 1905-11 Arms ½d. to 5/- with duplication and QV to 6d. orange (2), 1/- (both), 2/- Venetian red and 2/- purple on blue (2), 1912-20 MCA 1d. to 5/- (2), 1919-21 Pictorial MCA ½d. to 10/-, 1921-29 Pictorial Script ½d. to 10/- less 1½d. but with additional 5/- shades (3), 1932 2d., 2½d. and 6d., 1938-52 ½d. to 10/- (6) and £1 (3), 1945-46 New Constitution 1½d. to 10/- perforated "SPECIMEN", 1956-58 ½d. to £1 and 1962-63 Independence ½d. to £1, virtually all unmounted. Cat. £3200+

£800-1,000

x1185 ★

1921-29 Script 2/- light blue and brown vertical pair, lower stamp variety **imperfurate between stamp and margin**, large part heavily toned gum; very scarce. B.P.A. Certificate (2001). S.G. 103 var. Photo

£1,200-1,400

**JAMAICA**

## KENYA, UGANDA AND TANGANYIKA



Ex 1186

x1186 ☉

1903-60 mint collection in a stockbook including 1903-04 1r. to 5r. plus 50r. overprinted "SPECIMEN" (vertical crease), 1904-07 MCA 1r., 2r., 3r. (green faded), 5r. and 10r., 1907-08 1c. to 75c., 1912-21 MCA to 2r. (2), 4r., 10r. (3, one with some slight staining on reverse), 20r. black and purple on red and 20r. purple and blue on blue (overprinted "SPECIMEN"), 1921 Script to 3r. and 5r., 1922-27 1c. to £1 with additional 2s.50, 4s.(3), 7s.50, 10s. (2) and £1, 1935-37 1c. to £1, 1938-54 1c. to £1 with many shades and perf changes, 1954-59 5c. to £1 and 1960-62 5c. to 20/-, mostly unmounted. Cat. £6,500 approx. Photo

£2,000-2,500



Ex 1187

x1187 ★

1904-07 MCA 4r. to 50r., large part original gum; fine. S.G. 29-33, £4,200+. Photo

£1,300-1,500



1188



1189

x1188 ☉

1904-07 MCA 20r. grey and stone, centred to upper left, fine unmounted mint. S.G. 32, £850. Photo

£250-300

x1189 ★

1904-07 MCA 20r. grey and stone, fairly well centred; large part original gum, fine. Signed Bühler. S.G. 32, £850. Photo

£300-400

PROVENANCE:  
Vestey, 2015

An Extremely Rare Multiple of Major Importance



1190

x1190 ★田

1904-07 MCA 50r. grey and red-brown, a block of four from the foot of the sheet, lovely colour, unused with large part original gum. An extremely rare multiple of major importance. B.P.A. Certificate (2007). S.G. 33, £11,000. Photo

£8,000-10,000

PROVENANCE:  
Vestey, 2015



Kenya, Uganda and Tanganyika - *contd.*



1191



Ex 1192

**1912-21 Issue**

x1191 ☉ 1912-21 MCA 20r. black and purple on red, a top right corner example with plate number and showing sheet number "2", some creasing in right margin otherwise fine unmounted mint. S.G. 59, £475. Photo £150-180

x1192 ★ 1912-21 MCA 20r. black and purple on red, four unused examples with large part original gum. S.G. 59, £1,900. Photo £650-750



1193



1194

x1193 ★ 1912-21 MCA 50r. dull rose-red and dull greyish green, well-centred and of good colours, fine mint. S.G. 61, £900. Photo £300-400

x1194 ★ 1912-21 MCA 50r. dull rose-red and dull greyish-green, large part original gum, fine. B.P.A. Certificate (2009). S.G. 61, £900. Photo £400-500



1195

**1922-27 Issue**

x1195 ☉ 1922-27 £2 green and purple, fine unmounted mint. S.G. 96, £1100. Photo £400-500



1196



1197



1198

- x1196 ☼⑤      £3 purple and yellow, overprinted “SPECIMEN”, unmounted mint, fine. S.G. 97s, £400.      £200-300  
Photo
- x1197 ☼      £3 purple and yellow, fine unmounted mint. Brandon Certificate (1996). S.G. 997,      £600-800  
£1800. Photo
- x1198 ★      £3 purple and yellow, large part original gum; lightly toned gum. S.G. 97, £1,300. Photo      £600-800



1199



1200

- x1199 ★      £4 black and magenta, well-centred example with large part original gum, fine. Signed      £1,200-1,400  
Calves. S.G. 98, £3,000. Photo
- x1200 ★      £4 black and magenta, large part original gum, fine. Raybaudi Certificate (2007). S.G. 98,      £1,200-1,400  
£3,000. Photo



1201



1202



1203

- x1201 ☼      £5 black and blue, fine unmounted mint. S.G. 99, £3250. Photo      £1,000-1,200
- x1202 ★      £5 black and blue, an example from the left of the sheet with large part original gum; well      £1,000-1,200  
centred and fine. Sismondo Certificate (2013). S.G. 99, £3,250. Photo
- x1203 ⑤      £10 black and green, overprinted “SPECIMEN”, large part original gum; fine. S.G. 100s,      £350-450  
£900. Photo

Kenya, Uganda and Tanganyika, 1922-27 Issue - *contd.*

## A Fine Example of This Scarce and Popular Stamp



1204

x1204 ★ £10 black and green, large part original gum; a well-centred and fine example of this scarce and popular stamp. S.G. 100, £14,000. Photo £8,000-10,000



1205

x1205 ☉ £20 red and green, overprinted "SPECIMEN", large part original gum; centred to the left, fine. S.G. 101s, £1,600. Photo £750-850



1206

x1206 ☉ £75 purple and grey, overprinted "SPECIMEN", part original gum, well-centred; a few gum bends not affecting the appearance. S.G. 104s, £4,250. Photo £2,000-3,000

---

x1207 ☼ 1938-54 set unmounted mint range of perforation and printing types comprising perf 11¾x13 set to £1 ( two £1), 1941 line perf 14 20c. to £1, 1942-52 comb perf 13¼ x 13¼ 1c. to 10/-, 1949-52 comb perf 13 x 12½ 5c. to 3/-, 1954 line perf 12½ £1 and 1952 Royal Visit 10c. and 1/-; a nice specialised lot. S.G. 131-150 group £900-1,000



## LABUAN

- x1208 A large predominantly mint collection arranged on Hagner leaves including 1879 (May) 6c., 12c. and 16c., 1880-82 CC 2c. to 16c. with additional 6c. handstamped "*Specimen*" (faults) and 12c. with *no right foot to second Chinese character*, 1883 CA 2c. to 40c. with additional 2c. and 10c. handstamped "*Specimen*" (both with faults) and 8c. with *no dot at lower left*, 1885 (July) 2c. on 16c., 1885 (Sept.) 2c. on 8c. (2, one with normal watermark), 1885-86 CA 2c. to 16c. with additional 8c. mauve block of six, 1892-93 no wmk. 2c. to 40c. with additional 2c. (3), 6c. (2), 8c., 12c. and 16c. complete sheets of thirty or ten, 1892 (Dec.) 2c. on 40c. (3 including a used pair) and 6c. on 16c., 1894 litho 2c. to 40c. (2 sets, one handstamped "SPECIMEN"), 1894-96 Pictorial 1c. to 24c. (2 sets, one overprinted "SPECIMEN"), 1895 (June) surcharged set of five overprinted "SPECIMEN", 1896 high values (2 sets, one overprinted "SPECIMEN"), 1896 Jubilee set overprinted "SPECIMEN", 1899 (July) 4c. surcharge set overprinted "SPECIMEN" plus the three unissued values in pairs or strip of three (2c.), 1902-03 Crown 1c. to \$1 (2 sets, one overprinted "SPECIMEN" and 1904 surcharge set of nine (some faults). Condition a little mixed in places though overall generally fine
- £1,800-2,000
- x1209 ☼ 1879-1904 mint collection on Hagners including 1879 16c., 1880-82 CC 2c., 6c. and 12c., 1883 CA 2c., 16c. and 40c., 1885 (July) 2c. on 16c., 1885-86 8c., 1892-93 2c. to 40c. (2, shades), 1894 litho 2c. to 40c., 1896 Jubilee 1c. to 8c., 1897-1901 Pictorial 8c. (4), 18c. (2) and 24c., 1899 (July) 4c. on 5c. to 4c. on \$1 with some duplication, 1900-02 Pictorial 5c. (4), 10c. and 16c., 1902-03 Crown 1c. to \$1 with some duplication and 1904 4c. on 5c. to 4c. on \$1, the vast majority unmounted. Cat. £2200+
- £600-800



1210

- x1210 ○ 1885 2c. on 16c. blue, variety **surchARGE double**, position 4 from the unique sheet of ten, light oval of bars cancellation. A fine example of this great rarity, one of only four known. S.G. 25a, £7,000. Photo
- £2,500-3,000
- Note: Illustrated in the Robson Lowe Encyclopedia (when it was in a pair with Position 5).*

Labuan - *contd.*



1211

- |                                                                         |                                                                                                                                                                                                                                                                    |          |
|-------------------------------------------------------------------------|--------------------------------------------------------------------------------------------------------------------------------------------------------------------------------------------------------------------------------------------------------------------|----------|
| x1211                                                                   | 1885 "2 Cents" diagonally on 8c. carmine, a complete mint sheet of ten (5x2), small mark in margin otherwise fine. S.G. 26, £800+. Photo                                                                                                                           | £500-600 |
| <p>PROVENANCE:<br/>M. Burrus, 1963<br/>Malcom Burnett, October 1984</p> |                                                                                                                                                                                                                                                                    |          |
| x1212 ★ 田                                                               | 1891-92 "6 Cents" on 8c. mauve, 2mm. setting, a complete mint sheet of ten, one showing <b>surcharge double, one inverted</b> ; some offsets on reverse and a few split perfs otherwise fine mint. S.G. 35/35b, £1,044+. Photo                                     | £500-700 |
| <p>PROVENANCE:<br/>William Frazer, June 2003</p>                        |                                                                                                                                                                                                                                                                    |          |
| x1213 ★ 田                                                               | 1891-92 "6 Cents" on 8c. mauve, 2mm. setting, a complete mint sheet of ten, [9] showing variety "6" <b>omitted</b> ; [2] with small thin, some split perfs between rows 3 and 4, some hinge remnants and thin in selvage, otherwise fine. S.G. 35/35d, £744. Photo | £350-450 |
| <p>PROVENANCE:<br/>Walter Bickly, July 2011</p>                         |                                                                                                                                                                                                                                                                    |          |
| x1214 ★                                                                 | 1894-96 1c. black and grey-mauve vertical pair, variety <b>imperforate between</b> , part original gum, fine. S.G. 62ba, £1,200. Photo                                                                                                                             | £450-550 |
| x1215 ★                                                                 | 1894-96 5c. black and green horizontal pair, variety <b>imperforate between</b> , fine unused with large part original gum. Very rare. S.G. 65ab, £1,400. Photo                                                                                                    | £800-900 |
| x1216 ★ 田                                                               | 1896 Jubilee 1c. black and grey-mauve, a block of four with <b>overprint in orange</b> , unused with large part original gum.; a fraction gum toned otherwise fine. S.G. 83b, £800. Photo                                                                          | £250-350 |
| <p>PROVENANCE:<br/>Walter Bickly, 2011</p>                              |                                                                                                                                                                                                                                                                    |          |





1212



1213



1214



1216



1215



## LAGOS



Ex 1217

x1217 ★

1874-1906 mint collection on Hagner leaves including 1874-75 CC perf 12½ 1d., 1876-79 CC perf 14 1d., 3d. (2), 6d. (3) and 1/- (regummed), 1882 CA 1d. (2), 2d. (2), 3d. (4) and 4d., 1884-86 ½d. (4), 1d. (4), 2d. (4), 3d., 6d. (3), 1/- (5), 2/6d. and 5/-, 1887-1902 2d. to 10/- with some duplication including 2/6d. (2), 5/- (3, two a little faded) and 10/- (3, two a little faded), 1904 CA ½d. to 10/- with some duplication including 1/- (2), 2/6d. and 5/-, and 1904-06 MCA ½d. to 10/- less 5/-, some minor gum toning in places otherwise fine with most unmounted. Cat. £6,500+. Photo

£1,200-1,500

## LEEWARD ISLANDS

x1218 ☉

1890-1954 mint collection in a stockbook including 1890 ½d. to 5/-, 1897 Jubilee ½d. (2), 1d. (4, one toned), 2½d. (7 including a pair), 4d. (4), 6d. (2), 7d. (2), 1/- and 2/-, 1902 CA ½d. to 5/- with some duplication (some gum toned) including 5/-, 1905-08 MCA to 1/-, 1907-11 to 2/6d., 1912-22 ¼d. to 5/- (5) with many shades/papers, 1921-32 ¼d. to £1 with additional £1 from lower left corner with plate number, 1938-51 ¼d. to 10/- (3) and £1 (11) and 1954 1c. to \$4.80, the vast majority unmounted. Cat. £3500 approx.

£1,000-1,200



1219

x1219 ☉

1897 Jubilee 1d. dull mauve and rose with margin at foot, variety **overprint double**, fine unmounted mint. S.G. 10a, £1000. Photo

£300-400

x1220 ★

1938-51 set to £1 (two 10/-) along with twenty other mint £1 values in various shades, one an upper marginal from the right of the sheet and another used, including the better shades but unchecked for varieties

£1,500-2,000

**MADAGASCAR**



Ex 1221

x1221

1884 British Consular Mail, a selection of twenty-five used and unused on pages, some duplication; a chiefly fine group of these scarce and popular stamps. S.G. £8,000+. Photo

£2,500-3,500

**MAFIA ISLAND**



1222



1223



x1222 ☉

1915 4h. green and 7½h. carmine of German East Africa, both overprinted with Type 1 "G.R. MAFIA" in reddish violet, unmounted mint marginal examples. S.G. M2C, M3C, £425. Photo

£150-200

x1223

1915-16 stamps of India overprinted with Type 4, 2a. purple, a used upper marginal example, 2½a. ultramarine used and 3a. orange mint; fine. 3a. orange with photocopy of Brandon Certificate (2006) for the entire set. S.G. M36-38, £520. Photo

£150-250

## MALAYA

x1224 ★

Small mint selection comprising 1900 Federated Malay States \$25 overprinted "SPECIMEN" lightly mounted, Johore 1884 2c. pale rose **overprint double** type 10 with original gum and Brandon Certificate (2004), Kedah 1965 10c. with **red omitted**, unmounted mint, Selangor 1896 50c. with **dented frame**, part original gum, and Trengganu 1910-19 complete set to \$5 large part original gum and 1938 \$5, unmounted mint; a fine group

£1,200-1,400



Ex 1225

x1225 ★

1867-1986 mint collection housed in a Scott Speciality album including Labuan with 1885 surcharges and then virtually complete from 1892 to 1904, North Borneo virtually complete from 1887 to 1961 including Postage Dues with just a few gaps, Sarawak complete from 1869 to 1986 and Straits Settlements with a couple of 1867-79 surcharges, 1880-99 set to 96c., 1892-1904 set to \$5, 1904-11 set to \$5 and \$25 overprinted "SPECIMEN", 1907-11 set to \$1, 1912-18 and 1921-32 sets both to \$5 etc.; chiefly fine with part to large part original gum. Photo

£10,000-12,000

### Straits Settlements



Ex 1226

x1226 ☉

1867-1941 mint collection in a stockbook including 1867 (Sept.) 1½c. on ½a., 2c. on 1a., 3c. on 1a., 4c. on 1a. and 32c. on 2a., 1867-72 CC 2c., 24c., 30c. and 32c., 1879 5c. on 8c. and 7c. on 32c., 1880 (Apr.) "10" types "a" and "b" on 30c., 1880-81 10c. on 6c., 10c. on 12c. (2) and 10c. on 30c., 1882 (Jan.) 5c. on 4c., 1883 (Apr.) 2c. ("s" wide) on 32c., 1883 (June-July) 2c. on 4c. (2) and 2c. on 12c., 1884 (Feb.) 4c. in red on 5c. (2) and 8c. on 12c. brown-purple, 1884 (Aug.) 2c. on 5c. (2), 1884 (Sept.) "8" on 8c. on 12c., 1887 (July) 2c. on 5c., 1882-99 1c. to \$5 with some duplication including \$5 (2), 1902-03 CA to \$1 (block of four), \$2 (2, one lightly gum toned) and \$5 (3), 1904-10 MCA to 25c., 30c. (2), 50c. and \$1 (2), 1906-07 1c. to \$1, 1906-12 MCA to \$1 (5 including a block of four), \$2 (5 including a marginal strip of three) and \$5, 1912-23 MCA to \$5 (5), 1921-33 Script 1c. to \$5 with duplication including \$5 (2), 1922 Exhibition values to \$2 (2, one with raised stop), 1937-37 1c. to \$5 and 1937-41 1c. to \$5, also BMA 1c. to \$5, the vast majority unmounted. Cat. £16,000 approx. Photo

£5,000-6,000



x1227

1867-1948 mint and used collection on album pages including 1867 selection of India stamps surcharged including 1½c. on ½a. to 24c. on 8a. unused and a large amount of used examples (52), 1867-72 set to 96c. used, a range of surcharges mint and used, 1883-91 set to 96c. mint, along with extras such as 32c. with inverted watermark, 1892-99 set to \$5 mint, 1902 set to \$5 mint and used, 1904-06 set to \$5 mint and used, 1906-07 set to \$5 mint and used, 1912-17 set to \$25 used, North Borneo Exhibition set mint, 1936-37 set to \$5 mint, 1945-48 BMA set to \$5 green and red on emerald in blocks of four etc; a huge range that is worthy of careful viewing

£4,000-6,000



Ex 1228

x1228 ★

1867 small mint selection including 1½c. on ½a. (small adhesion at right), 2c. on 1a. (4 including a marginal vertical pair), 3c. on 1a. (2), 4c. on 2a. (2), 6c. on 2a., 8c. on 2a., 12c. on 4a., 24c. on 8a. and 32c. on 2a. (2), all unused with mainly large part original gum. A fine set in much above average condition. S.G. 1-9, £6,400+. Photo

£2,200-2,400



1229



1230



1231



1232

x1229 ★田

1880 5c. on 8c. orange, a block of four from the foot of the sheet, the upper row with Type 14 and the lower with Type 15, fine and fresh with large part original gum. S.G. 42/43, £1,880. Photo

£900-1,000

PROVENANCE:

Thomas Traill, November 1977

x1230 ★

1894 3c. on 32c. carmine-rose, variety **surcharges omitted**, an unused regummed example; B.P.A. Certificate (1982) states "colour has slightly run". S.G. 94a, £4,500. Photo

£1,000-1,200

x1231 ◎

1906-12 MCA \$25 purple and blue on blue overprinted "SPECIMEN", large part original gum, fine. S.G. 168s, £750. Photo

£300-400

x1232 ◎

1906-12 MCA \$25 purple and blue on blue overprinted "SPECIMEN", large part original slightly toned gum. S.G. 168s, £750. Photo

£250-300

Malaya - *contd.*



1233



1234

- |         |                                                                                                                                |              |
|---------|--------------------------------------------------------------------------------------------------------------------------------|--------------|
| x1233 ★ | 1906-12 MCA \$25 purple and blue on blue, large part original gum; good colour and well centred, fine. S.G. 168, £3,750. Photo | £1,300-1,500 |
| x1234 ★ | 1906-12 MCA \$25 purple and blue on blue, large part original gum; fine. S.G. 168, £3,750. Photo                               | £1,300-1,500 |



1235



1236

- |         |                                                                                                                     |              |
|---------|---------------------------------------------------------------------------------------------------------------------|--------------|
| x1235 © | 1906-12 MCA \$500 purple and orange overprinted "SPECIMEN", small part original gum. S.G. 169s, £4,750. Photo       | £1,500-1,800 |
| x1236 © | 1906-12 MCA \$500 purple and orange overprinted "SPECIMEN", large part original gum, fine. S.G. 169s, £4,750. Photo | £2,000-2,500 |

## 1912-23 Multiple Crown CA



1237



1238

- |         |                                                                                                                                            |              |
|---------|--------------------------------------------------------------------------------------------------------------------------------------------|--------------|
| x1237 ★ | 1912-23 MCA \$25 purple and blue on blue, large part original gum; light diagonal crease not affecting appearance. S.G. 213, £2,500. Photo | £600-800     |
| x1238 ★ | 1912-23 MCA \$25 purple and blue on blue, large part original gum; fine. S.G. 213, £2,500. Photo                                           | £1,000-1,200 |



1239



1240



1241

- x1239 ☉ 1912-23 MCA \$100 black and carmine on blue overprinted “SPECIMEN”, large part original gum; a few toned perfs. S.G. 214s, £1,300. Photo £250-350
- x1240 ☉ 1912-23 MCA \$100 black and carmine on blue overprinted “SPECIMEN”, large part original gum; centred to left. S.G. 214s, £1,300. Photo £300-350
- x1241 ★ 1912-23 MCA \$100 black and carmine on blue, unused with part original gum; fine and scarce. S.G. 214, £12,000. Photo £2,500-3,500

### Straits Settlements



1242



1243

- x1242 ○ 1912-23 MCA \$500 orange and purple, fiscally used with part embossed “FIVE HUNDRED DOLLARS” cancellation in red, fine. S.G. 215, £600. Photo £250-350

### 1921-33 Multiple Script CA

- x1243 ★ 1921-33 Script \$25 purple and blue on blue, fairly well-centred, fine mint. S.G. 240b, £1,400. Photo £500-600



1244



1245

- x1244 ★ 1921-33 Script \$25 purple and blue on blue, large part original gum; fine. S.G. 240b, £1,400. Photo £500-600
- x1245 ☉ 1921-33 Script \$100 black and carmine on blue overprinted “SPECIMEN”, large part original gum, fine. S.G. 240cs, £1,000. Photo £400-500



Malaya, 1921-33 Multiple Script CA - *contd.*

## A Fine and Scarce Example



1246

x1246 ★

1921-33 Script \$100 black and carmine on blue, marginal example with plate number from the left of the sheet, large part original gum; some hinge reinforcement between margin and stamp. Fine and scarce. R.P.S. Certificate (1967). S.G. 240c, £10,000. Photo

£3,500-4,500



1247



1248

x1247 ©

1921-33 Script \$500 purple and orange-brown overprinted "SPECIMEN", large part original gum; blunt corner at top left, small mark and repaired perforation at lower left corner. S.G. 240ds, £5,000. Photo

£700-800

x1248 ★

POSTAL FISCAL: 1938 \$25 purple and blue on blue, large part original toned gum; fine. S.G. F1, £1,400. Photo

£550-650

## Federated Malay States

x1249 ★

1900-22 unused set of fifty-five to \$5 including some listed shades, paper types etc. with both 1907 \$1 values; chiefly fine and part to large part original gum. S.G. 15-22 and 27-50 group

£500-600

**Johore**



1250

- x1250 ★ 1922-41 Script \$50 green and ultramarine, large part original gum, fine. S.G. 126, £1,500. Photo £500-700

**Perak**



Ex 1251

- x1251 © 1938-41 Script 1c. to \$5, each perforated "SPECIMEN", large part original gum; fine. S.G. 103s-121s, £650. Photo £300-400

**Trengganu**



1252



1253

- x1252 ★ 1912 MCA \$25 rose-carmine and green, well-centred with large part original gum; fine. S.G. 18, £1,700. Photo £800-900
- x1253 © 1921-41 Script \$25, \$50 and \$100, each overprinted "SPECIMEN", part original gum; some light toning on reverse of each. S.G. 45s-47s, £2,025. Photo £400-500

## MALTA

x1254

1850-1960 mint and used collection on album pages starting with a pre-stamp cover, G.B. used in Malta (30, including used on cover and pairs), a nice range of ½d. yellows including S.G. 1 and 2 mint, 1886 5/- mint (2) and used (8), most sets mint and used to 1960; mixed condition with some being fine, huge catalogue value

£4,000-6,000



Ex 1255

x1255 ☉

1860-1965 mint collection in a stockbook including 1860 no wmk. white paper ½d. (4, three regummed), 1863-81 CC ½d. (14, shades), 1882-84 CA ½d. (7), 1885-90 ½d. to 1/- with additional 4d. block of six and 1/- (2), 1886 5/- (2), 1899-1901 2/6d. and 10/- (2, one lightly toned), 1903-04 CA 2½d. to 1/-, 1904-14 MCA ¼d. to 5/-, 1914-21 ¼d. to 5/- with some shades/papers, 1921-22 Script ¼d. to 10/- with additional 2/-, 1922 Self-Government CC 10/-, MCA ½d. to 5/- and Script ¼d. to 10/-, 1922-26 ¼d. £1 (4, one with watermark sideways), 1926 (Apr.) ¼d. to 10/- with additional 3d. with **overprint inverted** (2, one without initials on reverse), 1926-27 ¼d. to 10/-, 1928 ¼d. to 10/-, 1930 ¼d. to 10/- and 1935 to 1962 complete, the vast majority unmounted. Cat. £10,500+. Photo

£3,500-4,500



1256

x1256 ★

1861 white paper, no watermark ½d. brown-orange, large part original gum, fine. S.G. 2, £1,300. Photo

£250-350



1257



1258



Ex 1259

x1257 ★

1919 MCA 10/- black, lightly mounted mint; well centred, fine and scarce. S.G. 96, £3,250. Photo

£1,500-1,700

x1258 ★

1919 MCA 10/- black, well-centred, fine mint. S.G. 96, £3250. Photo

£1,000-1,200

x1259 ★

1922 Script 10/- black, five unused examples with large part original gum. S.G. 104, £1,750. Photo

£350-450



**MAURITIUS**

**1848-59 Post Paid Issues**



1260



1261

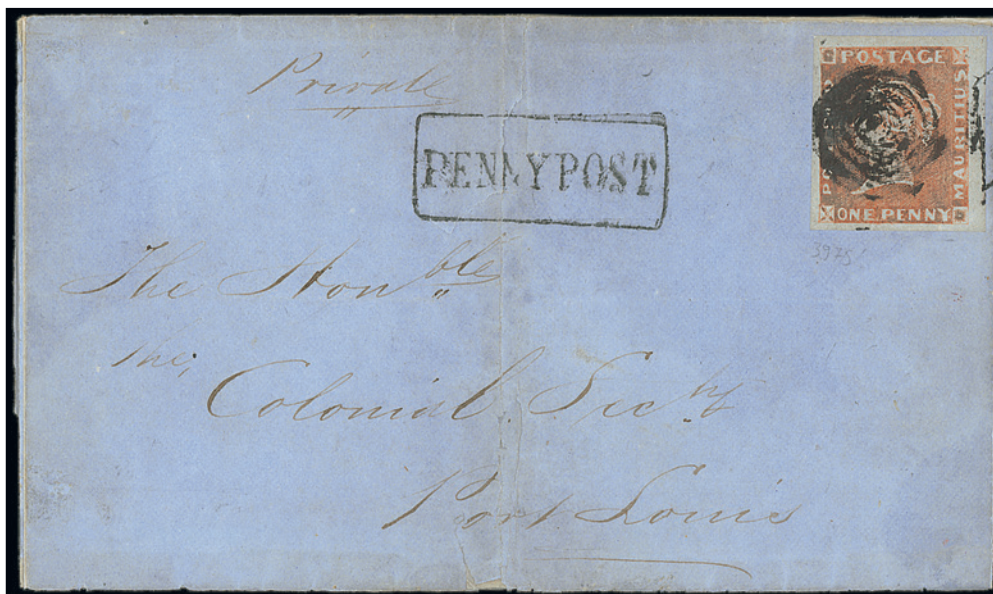


1262



1263

- x1260 ○ 1d. orange-vermilion on yellowish paper, earliest impression, position 5, good to large margins, cancelled by clear concentric circles obliterator; a fine example of this rarity. Briefmarkenprüfstelle Basel Certificate (2003), S.G. 3, £18,000. Photo £3,000-4,000
- x1261 ○ 1d. vermilion, early impression, four good to large margins, fine used example cancelled by concentric circles cancellation; some surface rubbing but still a pleasing example of this scarce stamp. S.G. 6, £7,500. Photo £700-900
- x1262 ○ 1d. orange-vermilion, early impression on greyish blue paper, position 2, large even margins and lightly cancelled; some minor oxidisation. Sorani Certificate (1988). S.G. 7, £7,000. Photo £1,200-1,400
- x1263 ○ 1d. orange-vermilion, early impression, large to very large margins, Mahébourg numeral "1" cancellation, fine. Brandon Certificate (2008). S.G. 7, £7,000. Photo £1,500-1,700



1264

- x1264 ○ 1d. orange-vermilion, early impression, position 3, good to large margins cancelled by concentric circles obliterator and affixed at a later date to a wrapper (with faults) with a very rare "PENNY POST" type II handstamp, illustrated in Ibbotson's supplement and recorded as the earliest known usage of this handstamp. Brandon (1994) and Bühler (1984) Certificates. S.G. 7. Photo £650-750

Mauritius, 1848-59 Post Paid Issues - *contd.*



1265



1266



1267



1268

- |         |                                                                                                                                                                                                                   |            |
|---------|-------------------------------------------------------------------------------------------------------------------------------------------------------------------------------------------------------------------|------------|
| x1265 ○ | 2d. deep blue, early impression, position 5, large to very large margins, with part boxed "INLAND" handstamp, pressed horizontal crease and thin at top; fine appearance. S.G. 9, £9,500. Photo                   | £850-950   |
| x1266 ○ | 2d. deep blue, intermediate impression, position 2, clear to large margins, used with concentric circles cancellation in black; a fine example. Holcombe Certificate (1986). S.G. 13, £4,250. Photo               | £500-700   |
| x1267 ○ | 2d. blue on grey paper, intermediate impression, position 4, used example with Mahébourg numeral "1" cancellation, large margins all around. Alcuri (1992) and B.P.A. (2016) Certificates. S.G. 14, £3,500. Photo | £750-850   |
| x1268 ○ | 2d. light blue, intermediate impression, position 5, used by Mahébourg numeral "1" cancellation; good to large margins, fine. S.G. 15, £3,500. Photo                                                              | £900-1,100 |



Ex 1269

- |         |                                                                                                                                                                                                                                                                                                                                                                                                                                                                                                                                                                                                                                                                                                                                                                                                           |              |
|---------|-----------------------------------------------------------------------------------------------------------------------------------------------------------------------------------------------------------------------------------------------------------------------------------------------------------------------------------------------------------------------------------------------------------------------------------------------------------------------------------------------------------------------------------------------------------------------------------------------------------------------------------------------------------------------------------------------------------------------------------------------------------------------------------------------------------|--------------|
| x1269 ☉ | 1858-1969 mint collection in a stockbook including 1858-62 (4d.) vermilion, 1859-61 6d. dull purple-slate, 1863-72 CC 2d., 3d. dull red, 4d. and 9d., 1877 1d. on 4d. block of four, 1878 8c. on 2d. and 38c. on 9d. to 2r.50 on 5/-, 1879-80 CC 2c. to 2r.50 less 25c. (17c. with trimmed perfs at foot), 1883-94 CA 1c. to 50c. with some duplication, 1883 16c. on 17c., 1891 2c. on 4c. with surcharge inverted, 1900-05 to 2r.50 and 5r., 1902 4c. to 2r.50, 1904-07 MCA 1r., 1910 MCA 2r.50 to 10r., 1913-22 MCA 5c. to 10r. with some shades/papers including 10r. (3), 1921-26 Script 1c. to 20c. and 50r., 1921-34 Script to 5r. plus 10r. overprinted "SPECIMEN", 1938-49 2c. to 10r., 1950 1c. to 10r., 1953-58 2c. 10r. and 1965 2c. to 10r., the vast majority unmounted. Cat. £6000+. Photo | £2,000-2,500 |
|---------|-----------------------------------------------------------------------------------------------------------------------------------------------------------------------------------------------------------------------------------------------------------------------------------------------------------------------------------------------------------------------------------------------------------------------------------------------------------------------------------------------------------------------------------------------------------------------------------------------------------------------------------------------------------------------------------------------------------------------------------------------------------------------------------------------------------|--------------|



1270



1271



1272

- x1270 ★ 1859 Britannia 9d. dull magenta, large part original toned gum; a fine and attractive example. S.G. 29, £900. Photo £300-400
- x1271 ○ 1859 Dardenne 1d. red, a used example with good to large margins. S.G. 41a, £1,700. Photo £450-500
- x1272 ○ 1859 Dardene 2d. blue, large to enormous margins, cancelled with clear barred oval obliterator; fine. S.G. 43a, £950. Photo £400-450



Ex 1273

- x1273 ⑥③Ⓑ 1863-72 1d. to 1/- imperforate proof blocks of twelve on ungummed glazed paper each with part marginal inscription, printed in near issued colours, each stamp overprinted "CANCELLED"; fine and scarce. Photo £450-550



1274

- x1274 ★ Ⓑ 1863-72 CC 6d. violet block of six with interpanneau margin at left, some light tone spots on reverse just showing through; large part original gum, mounted on one stamp only. S.G. 63, £2,550. Photo £600-800



Mauritius - *contd.*



1275

x1275 ★

1863-72 CC 9d. yellow-green, block of twelve from lower left of the sheet with imprint at foot, large part original gum; mounted on four stamps and margin, some light toning in margin. S.G. 66, £2,280. Photo

£1,000-1,200



1276

x1276 ★

1899 6c. on 18c. green and ultramarine, variety **surcharge inverted**, large part original gum, fine. S.G. 134a, £700. Photo £200-250

x1277 ★

1905 15c. black and blue on blue, block of eighteen from the lower right of the sheet with sheet number '1' at foot, unmounted mint. S.G. 150, £1,170+. Photo £300-400



1277



1278

x1278 ★

1902 12c. on 36c. orange and ultramarine, variety **surcharge inverted**; large part original gum, mounted on one stamp only. R.P.S. Certificate (1947). S.G. 163a, £1,600. Photo

£600-800



1279



Ex 1280

x1279 ★

1919 10r. green and red on blue-green (olive back), part original gum. Signed A. Diena and with his Certificate (1969). S.G. 204a, £1,100. Photo

£250-350

x1280 ☉

1921-26 Script 1c. to 50r. set of eighteen, each overprinted "SPECIMEN", large part original gum, fine. S.G. 205s-222s, £875. Photo

£300-400



1281

x1281 ☉田

1921-34 2r.50 black and red on blue, 5r. green and red on yellow and 10r. green and red on emerald, unmounted mint blocks of four, fine. S.G. 239-241, £920. Photo

£300-400



## MONTSERRAT

- x1282 ☼ 1884-1970 mint collection in a stockbook including 1903 CC 5/-, 1904-08 MCA to 1/- with duplication and 5/-, 1908-14 MCA d. to 5/-, 1914 5/-, 1916-22 MCA ½d. to 5/-, 1922-29 Script ¼d. to 5/-, 1932 Tercentenary set, 1938-48 ½d. to £1 with perf changes, 1953 1c. to \$4.80, 1953-62 ½c. to \$4.80, 1965 1c. \$4.80 and 1970 Birds 1c. to \$10, the vast majority unmounted. Cat. £1600+ £400-500

## NATAL

- x1283 ☼ 1874-1909 mint collection on Hagner leaves including 187-99 CC 1d., 6d. and 5/- (2), 1880 CC ½d., 1882-89 CA ½d. to 6d. (4), 1902-03 CA ½d. to 2/- (2) and 4/-, 1902 CC 5/-, 10/-, £1 and £1.10, 1904-08 MCA ½d. to 2/6d. and 1908-09 ½d. to £1 with additional 2/6d. (2), 5/- (2) and 10/-, mostly unmounted. Cat. £3200+ £1,000-1,200



Ex 1284

- x1284 ★ 1908-09 6d. to £1, three lightly mounted sets, fine. S.G. 165-171, £1,650. Photo £500-700

## NAURU



Ex 1285

Ex 1286

- x1285 ★ 1916-23 1d. to 1/- sets of eleven (2) and De La Rue 2/6d., 5/- and 10/- (2 of each), large part original gum, fine. S.G. 1-12, 20, 22, 23, £1,000+. Photo £500-600
- x1286 ★ 1916-23 De La Rue 2/6d. sepia-brown, two examples, large part original gum, fine. S.G. 19, £1,200. Photo £200-300
- x1287 ☼ 1916-66 mint collection on Hagner leaves including 1916-23 ½d. to 1/- with duplication (some gum toned), overprint at centre ½d. to 2d. and De La Rue 2/6d., 5/- and 10/-, 1924-48 greyish paper ½d. to 10/-, white paper ½d. to 10/- and complete then onwards, virtually all unmounted. Cat. £1000+ £250-300



**NEWFOUNDLAND**



Ex 1288

x1288 ☉

1857-1947 mint collection in a stock book including 1857-64 1d. and 4d. without gum, 1862-64 1d. (2), 2d. (3), 4d., 5d. (4), 6d., 6½d., 8d. and 1/-, 1865-70 2c., 5c., 10c. (3), 12c. (4), 13c. and 24c. (3), 1868 1c., 1868-73 3c. (both) and 6c. (2), 1880-82 rouletted 2c., 3c. and 5c., 1880-82 1c., 2c. (4) and 5c., 1887 2c. (4), 3c. (4), 5c. (8) and 10c., 1894 6c. (6 including a marginal block of four with part imprint, 1896-98 ¼c., 1897 Discovery 1c. to 60c. with some duplication, 1897 1c. (Type 36) on 3c. (4), 1897-1918 ½c. to 5c., 1910 1c. to 15c. with some duplication plus 12c. imperf pair, 1911 recess 6c. to 15c. with duplication, 1911-16 Coronation 1c. to 15c., 1919 Contingent 1c. to 30c., 1919 (June) Air \$1 on 15c., 1920 (Sept.) 3c. on 15c. (both), 1923 (Nov.) Air 35c. vertical pair showing both settings, 1923-24 1c. to 24c. plus 4c., 6c. and 11c. imperforate pairs (11c. vertical), 1928-29 Publicity 1c. to 30c., 1931 1c. to 30c., 1932 3c. and 10c. imperf pairs, 1932 Air \$1.50 on \$1, 1932-38 1c., 2c. (2), 4c., 5c. (2) and 48c. (vertical) imperf pairs, 1933 Air 5c. to 75c., 1933 Air Balbo \$4.50 on 75c., 1933 1c. to 32c. plus 1c. imperf block of four, 2c. and 4c. (vertical) imperf pairs and 1938 7c. imperf pair, the vast majority unmounted. Cat. £14,500+. Photo

£5,000-6,000



1289

x1289 ★

1857-64 6½d. scarlet-vermilion, unused example without gum, large margins; a fine example of this scarce stamp. S.G. 7, £4,500. Photo

£3,000-4,000

1290

No Lot



1291



1292



1293



1294

x1291 ○

1857-64 1/- scarlet-vermilion, fine lightly cancelled example with close to large margins. Signed E. Diena and B.P.A. Certificate (1977). S.G. 9, £9,000. Photo

£3,000-4,000

x1292 ★

1860 4d. orange-vermilion unused without gum, good to large margins, a fine example. B.P.A. Certificate (2001). S.G. 12, £4,500. Photo

£1,500-2,000

x1293 ★

1860 1/- orange-vermilion, fine used with close to good margins. R.P.S. Certificate (1979). S.G. 15, £11,000. Photo

£3,500-4,500

x1294 ○

1860 1/- orange vermilion, close margins, used with part barred oval cancellation. S.G. 15, £11,000. Photo

£1,200-1,400

Newfoundland - *contd.*

1919 3c. "Hawker" Overprint



1295

x1295 ④

1919 (12 Apr.) envelope to Great Malvern, Worcestershire, bearing 3c. brown overprinted "First Trans-Atlantic Air Post April, 1919." and carried by Lieut. H. Hawker on his Atlantic flight, tied by machine cancellation, "G.R. FOUND OPEN (OR TORN) AND OFFICIALLY SECURED" label affixed to reverse; fine and scarce, only ninety-five of the overprinted 3c. brown were used on letters. B.P.A. Certificate (1971) and signed E. Diena and with his Certificate (1983). S.G. 142, £12,000. Photo

£8,000-10,000



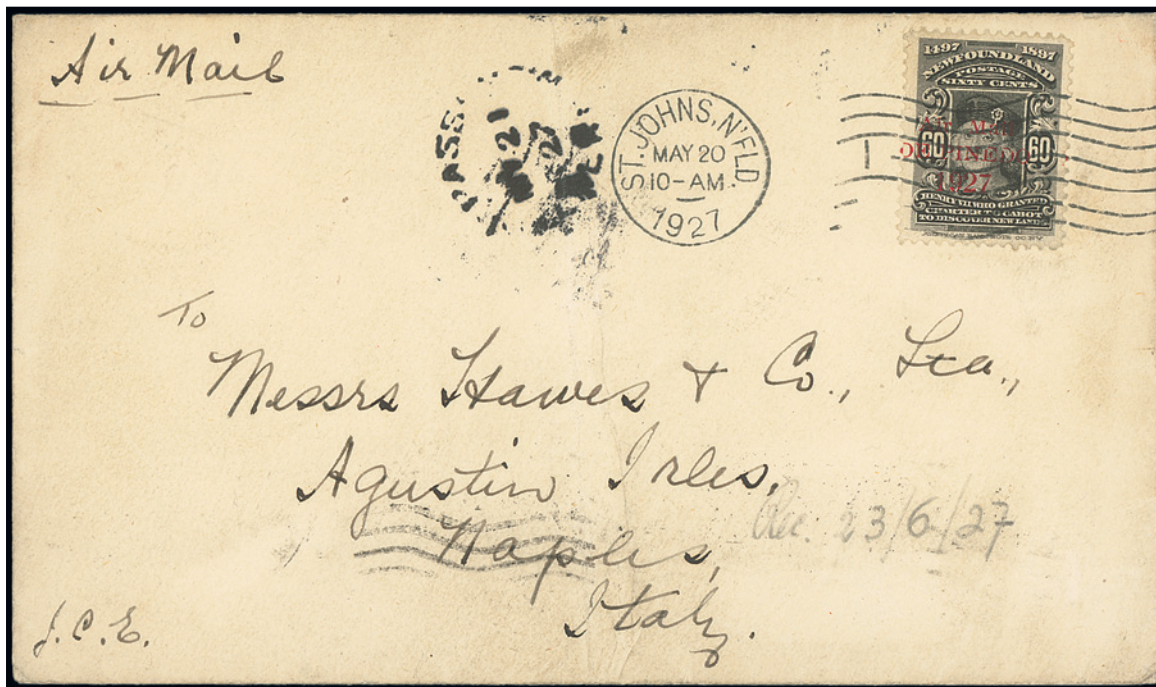
1296

x1296 ★

1920 (Sept.) 3c. on 35c. red unused block of six, one stamp with "THREE" omitted; some hinge reinforcement. S.G.147/147c, £1,200+. Photo

£600-700

**1927 De Pinedo Flight**



1297

x1297 ④✉

1927 (20 May) envelope to Naples, Italy bearing 1927 60c. black overprinted "Air Mail DE PINEDO 1927" in red, tied by machine cancellation and carried by F. De Pinedo on his flight to Europe, only two-hundred and thirty of these stamps were used on correspondence. Rendon (1984) and Vincent Greene (1997) Certificates. S.G. 163, £13,000. Photo

£5,000-7,000

**NEW GUINEA**



1298

x1298 ★

1915 1s. on Marshall Islands 1m. carmine, 5.5mm spacing, unused with large part original gum; some small surface marks at upper right, very scarce. G. Hoffmann-Giesecke (1967) and B.P.A. (2014) Certificates. S.G. 64n, £17,000. Photo

£3,000-5,000

x1299 ④

1925-27 ½d. to £1 with 6d. shades and additional 10/-, 1931 Air ½d. to £1, 1931 (Aug.) ½d. to 10/- and Air ½d. to £1, 1932-34 1d. to £1 with some duplication including 10/- (2, one creased) and £1 and Air ½d. to £1, 1935 Air £2 and £5, 1939 Air ½d. to £1 with additional ½d. to 1/- and Official 1932-24 1d. to £1, fine mint with virtually all unmounted. Cat. £4500+

£1,500-1,800



## NEW HEBRIDES

- x1300 ☼ 1908-68 mint collection in a stockbook including 1908 CA ½d. to 1/- less 6d., 1911 MCA 2/- and 5/-, 1920-21 2d. on unwatermarked 40c. (2, both marginal), 1938 5c. to 10f. and 1953-68 complete, virtually all unmounted. Cat. £1000+ £250-300

## NEW ZEALAND

- x1301 ★ 1862-1940 mainly mint collection on pre-printed album pages and neatly presented, sparse early issues used but with better later mint, 1898 set virtually complete to 5/-, 1902-07 set to 5/- (no 6d.), largely complete thereafter; a fine collection with better condition than often found £1,500-1,700

## NEVIS

- x1302 ★ 1862-90 mint collection on two album pages (34) including 1862 greyish paper 1d. to 1/-, blued paper 1d. 6d. and 1/-, 1866-76 4d. (2), 1/-, blue-green, 1876-78 4d., 6d., 1/- crossed lines (2), 1879-80 2½d., 1882-90 1d. lilac-mauve, 2½d. red brown, 4d. blue, 6d. green, 1/- etc. part original gum or unused, mixed condition £600-800

## NIGERIA



Ex 1303

- x1303 ★ 1914-29 MCA ½d. to £1, four sets with part to large part original gum, along with an additional £1 value. S.G. 1-12, £1,290+. Photo £350-450
- x1304 ☼ 1914-65 mint collection in a stockbook including 1914-29 MCA ½d. to £1 (both dies) with some shades/papers to 10/- (4), 1921-32 Script ½d. to 2/6d. (4, one die I), 5/- (4, one die I) and 10/- (5, three die I), 1936 ½d. to £1, 1938-51 ½d. to £1 with most perf changes, 1953-58 ½d. to £1, 1961 ½d. to £1 and 1965-66 ½d. to £1 plus Cameroons 1960-61 ½d. to £1; the vast majority unmounted. Cat. £2000+ £600-800



### The Royal Philatelic Society London

We are pleased to receive proposals for membership of the Society which is through election.

If you are interested in membership, please contact us at [secretary@rpsl.org.uk](mailto:secretary@rpsl.org.uk)

If you have no proposer or seconder, please contact us for further information.

Tel: 00 44 (0)20 7486 1044 | [www.rpsl.org.uk](http://www.rpsl.org.uk)

The world's oldest and most prestigious philatelic society, established 1869, with over 2,000 members in more than 70 countries.

\*\*\*

Extensive premises in London's West End house the Society's superlative library, plus Museum and Archive, and provide first-class meeting facilities.

\*\*\*

The Society's Online Catalogue provides access to over three-quarters of a million philatelic indexes to members world-wide.

\*\*\*

A fascinating programme of displays and meetings throughout the year, supplemented by regional meetings and gatherings at major international events.

\*\*\*

The Society publishes ten times a year its own journal, *The London Philatelist*, containing articles of outstanding philatelic research, in addition to publishing major philatelic works.

\*\*\*

We are honoured to have Her Majesty Queen Elizabeth II as our Royal Patron

## NIUE

x1305 ☼

1902-70 mint collection on Hagner leaves including 1918-21 2/- to £1, 1927-28 2/- (both), 1931 2/6d., 5/-, 10/- (2) and £1, 1932 ½d. to 1/-, 1938 1/- (2), 2/- (2) and 3/- (2), 1941-67 single wmk 10/- (2) and £1, multiple wmk. 2/6d. (2), 5/- (3), 10/- and £1 and Wiggins Teape wmk sideways 5/- (4); the vast majority unmounted. Cat. £1500+

£400-500



1306

x1306 ★

1920 6d. red-brown and green, variety **inverted vignette**, unused with large part original gum. S.G. 42 var, see footnote, £850. Photo

£500-700

## NORFOLK ISLAND



1307

x1307 ☼田

1940 1/- slate-green, perforated 11, prepared for use but never issued; an unmounted mint block of four from the right of the sheet, fine and scarce. B.P.A. Certificate (2007), See footnote after S.G. 12a. Photo

£4,000-5,000



The Royal Philatelic Society  
London HQ  
15 Abchurch Lane,  
London, EC4N 7BW  
www.rpsl.org.uk

## SPINK

*WHERE HISTORY IS VALUED*

Spink is proud to continue being part of the Tomorrow's Royal campaign by holding some of our most important and prestigious auctions, at the new HQ of the Royal Philatelic Society of London.

We believe this is the start of a new era in philately, as well as a significant development in philatelic co-operation for RPSL and Spink London.

With the RPSL now at the forefront of global philately, a development we hope, will benefit all philatelists for many years to come.

Do join us, in the heart of the city of London, for the beginning of a great philatelic adventure.

The first of our auctions to be held at this magnificent venue will be:

**17th September 2019**  
The 'Bartica' Collection of British Guiana Ship Type Issues  
The 'Lionheart' Collection of Great Britain and British Empire Part X

**18th September 2019**  
The Camping Collection of Great Britain

Viewing for these auctions will be held at SPINK Stampex stand #122 and thereafter, 16th September on the second floor of the Royal Philatelic Society London.

LONDON | NEW YORK | HONG KONG | SINGAPORE | SWITZERLAND



#SPINK\_AUCTIONS    WWW.SPINK.COM

## NORTH BORNEO



1308

- x1308 ★ 1883 "8 Cents." on 2c. red-brown, a well centred example with part original gum. S.G. 2, £1,400. Photo £650-750
- x1309 ★ 1883-87 unused/mint selection (37) including 1883 2c. corner block of four, 1886 ½c., 1c. 1c. imperforate pair and 4c. to 10c., 1886 perf. 14 3c. on 4c. and 5c. on 6c., 1886-87 perf. 14 selection to 10c. with ½c., 1c. and 8c. imperforate pairs and perf. 12 ½c.; also 1883 50c. used (2, one with tones) with Kudat c.d.s.; generally good to fine. Also 1888-92 range of forgeries imperforate (54) and perforated (58, four "used") £300-500



Ex 1310

- x1310 ☉ 1886-1963 mint collection in three stockbooks including 8c. (5 including a pair), 1888-92 25c., 50c. (3), \$1 (2) and \$2, 1890 8c. on 25c., 1892 1c. on 5c. (5 including a block of four), 1894 Pictorial 1c. to 24c. with some duplication, 1894 \$1, \$2 and \$5, 1895 (June) surcharges, 1899 4½mm. setting 4c. on 5c. (2), 4c. on 6c. (4), 4c. on 8c. and 4c. on \$10, 1901-05 British Protectorate to 8c., 12c., 16c. (2) and 18c., 1911 25c. to \$10 less \$1, 1916 (Feb.) surcharges, 1916 (May) Red Cross 1c. to 16c., 1918 (Aug.) to \$2, 1918 (Oct.) 1c. to \$10, 1922 Exhibition 2c. (2), 3c. (2), 4c., 5c. (2), 6c. (3), 8c. (2), 10c., 12c. (2), 16c. (2), 20c. on 18c. (red), 25c. and 50c., 1925-28 to \$5, 1931 3c. to \$5, 1939 1c. to \$5 with some duplication to \$2, 1945 BMA 1c. to \$5, 1947 1c. to \$5 with duplication, 1950-52 1c. to \$10, 1954-59 1c. to \$10, 1961 1c. to \$10 and Japanese Occupation 1944 (Sept.) 1c. to \$1; most unmounted. Cat. £12,000 approx. Photo £4,000-5,000





1311

x1311 ★

1899 “4 CENTS” large overprint (8½mm. spacing) on \$10 brown horizontal pair, the left stamp with **overprint omitted**, large part original gum; a great rarity, the only example recorded and believed to be unique. Ceremuga Certificate (2015), S.G. 86, 126 var. Photo

£3,000-4,000



1312

x1312 ☼ ㊞

1890 2c. on 25c. indigo first printing, marginal block of nine from the foot of the sheet, variety **surchage inverted**, fine unmounted mint. Rare and one of the largest recorded multiples. S.G. 51a, £4,050. Photo

£1,200-1,400

North Borneo - *contd.*



1313



1314



Ex 1315

- x1313 ★ 1894 5c. black and orange-vermilion horizontal pair, variety **imperforate between**, unused without gum; centred to top, fine and scarce. S.G. 100ab, £1,700. Photo £250-350
- x1314 ☉ 1901-05 British Protectorate \$5 dull purple, fine unmounted mint. S.G. 144, £425. Photo £120-150
- x1315 ★ 1916 (May) Cross 1c. to 25c. set of thirteen, including 4c. to 25c. with Cross in carmine (matt ink), part to large part original gum. Photo £300-400



Ex 1316



- x1316 ☉ 1939 1c. to \$5, unmounted mint; fine. S.G. 303-317, £1,400. Photo £550-650
- x1317 ★田 1945 1c. to \$5 in lightly mounted blocks of four (also 8c. and 12c. in strips of three), fine. S.G. 320-334, £1,000+. Photo £350-450



Ex 1317



**NORTHERN NIGERIA**

- x1318 ☼ 1900 CA ½d. to 10/- (green a little faded), 1902 CA ½d. to 10/- with some duplication (one 1/- and the 10/- with green a little faded), 1905-07 MCA to 2/6d., 1910-11 ½d. to 10/- with some duplication and 1912 ½d. to £1 less 5/-; most unmounted. Cat. £1300+ £250-300
- x1319 ★ 1912 ½d. to £1 (5), five sets with large part original gum. S.G. 40-52, £1,250 £450-550

**NORTHERN RHODESIA**

- x1320 ☼ 1925-63 complete unmounted mint collection with additional 1925-29 7/6d. (2, one lightly gum toned) and 20/- . S.G. 1-88, £2000+ £500-600



Ex 1321



1322



- x1321 ☼ 1963 Arms 1d. with **value omitted**, 3d. (4, one with value misplaced, one with **value omitted** and two with **value and orange (eagle) omitted**) and 4d. (2) with **value omitted**, fine unmounted mint. Cat. £885+. Photo £250-300
- x1322 ☼ 1963 Arms 20/- blue with **value omitted**, fine unmounted mint. S.G. 88a, £1200. Photo £300-400

**NOVA SCOTIA**

1323



1324



1325

- x1323 ★ 1851-60 1d. red-brown, good to large margins with part of the neighbouring stamp showing to the right, a fine unused example without gum. S.G. 1, £3,000. Photo £500-700
- x1324 ★ 1851-60 6d. deep green, large part original gum, close to good margins; just touched at "E" of "POSTAGE", still a fine example of this stamp rarely seen mint. A.P.S. Certificate (1981), S.G. 6, £10,000. Photo £1,800-2,200
- x1325 ○ 1851-60 6d. deep green, close to good margins, lightly cancelled by oval datestamp. S.G. 6, £1,000. Photo £400-500



## NYASALAND



Ex 1326

x1326 ☉

1891-64 mint collection in a stockbook including 1891-94 1d. to 2/-, 1895 no wmk. 2d., 4d., 6d., 1/- and 3/-, 1896 CA 4d., 1/-, 2/6d. and 5/-, 1897-1908 1d. to 10/- with some duplication (3/- regummed), 1903-04 1d. to £1, 1908 2/6d. (2), 4/- (2), 10/- and £1, 1913-21 MCA ½d. to £1 with additional 10/- and £1 (purple faded), 1921-33 to 2/-, 2/6d., 4/- (2), 5/- (2) and 10/- (2), 1934-35 ½d. to 1/-, 1938-44 ½d. to £1 with additional 2/-, 2/6d., 5/- (3), 10/- (bluish green and brown-red on pale green with BPA Certificate, 1994) and £1, 1945 ½d. to 20/-, 1953-54 ½d. to 20/-, 1963 ½d. on 1d. to £1 and 1964 ½d. to £1; the vast majority unmounted. Cat. £7500+. Photo

£2,500-3,000



Ex 1327

x1327 ★

1891-95 1d. to 10/-, part to large part original gum, fine. S.G. 1-13, £650+. Photo

£300-400



1328

x1328 ○

1895 no watermark £25 black and blue green, a fine postally used example cancelled by "TSHIROMO/B.C.A.", centered to upper right; repaired tear at right not affecting appearance, a rare stamp postally used. Scheller Certificate (2016). S.G. 31, £16,000. Photo

£1,800-2,200



Ex 1329



1330

- x1329 ★ 1896 1d. to £1 set of nine, unused with part to large part original gum; 3/- with some gum bends, otherwise fine. S.G. 32-40, £1,950. Photo £600-800
- x1330 ☉ 1896 CC £10 and £25 overprinted "SPECIMEN", part original gum, fine. S.G. 41s-42s, £750. Photo £250-300



1331



1332



1333

- x1331 ☉ 1896 CC £25 black and green overprinted "SPECIMEN", part original gum, fine. S.G. 42s, £450. Photo £100-150
- x1332 ☉ 1903-04 £10 grey and blue overprinted "SPECIMEN", part original gum, fine. S.G. 67s, £650. Photo £150-200
- x1333 ☉ 1903-04 £10 grey and blue overprinted "SPECIMEN", lightly mounted mint, fine. S.G. 67s, £650. Photo £250-300



1334



1335

- x1334 ☉ 1908 £1 purple and black on red with margin at top, fine unmounted mint. S.G. 81, £650. Photo £200-250
- x1335 ☉ 1913-19 MCA £10 purple and dull ultramarine overprinted "SPECIMEN", large part original gum, fine. S.G. 99s, £800. Photo £350-450

## PAPUA

- x1336 ☼ 1901-68 mint collection in a stockbook including 1900-01 wmk horizontal ½d. to 1/- and wmk vertical ½d., 1d., 2d. (2), 6d., 1/- and 2/6d., 1906 large "Papua" wmk horizontal 6d. and wmk vertical ½d. (2), 1d., 2d. (2) and 2½d., 1907 small "Papua" wmk horizontal ½d., 2½d. and 2/6d. (2) and wmk vertical 1d., 2d. (2), 2½d., 4d., 6d., 1/- (2) and 2/6d., 1907-10 small "PAPUA" range to 1/-, 1910-11 large "PAPUA" ½d. to 2/6d. (both), 1911 mono-colours with duplication, 1916-31 bi-coloureds to 10/-, 1932-40 ½d. to £1, 1938 and 1939 Air issues and Papua New Guinea 1952-58 ½d. to £1; the vast majority unmounted. Cat. £3500+ £1,000-1,200

## PITCAIRN ISLANDS

- x1337 ☼ 1940 ½d. to 2/6d. set of eight perforated "SPECIMEN", fine mint. S.G. 1s-8s, £1400 £400-500

## RHODESIA

- x1338 ☼ 1892-19 mint collection in two stockbooks including 1892-93 1d., 6d. (both), 1/-, 2/-, 2/6d. (both), 5/-, 10/-, £1 and £10 (many regummed including high values), 1892 surcharges, 1892-94 ½d. (2), 2d. (2), 3d., 4d. (2), 8d., 3/- and 4/-, 1895 2d. and 4d. (2), 1896-97 Die I 3/- and 4/-, and Die II 1d., 2d., 4d. (2), 6d. and 2/- to 10/-, 1896 ½d. to 5/-, 1897 1d., 4d., 6d. (2), 8d. and £1, 1898-1908 to 1/-, 2/6d. (2), 3/-, 5/-, 7/6d., 10/- (2), £1 and £2 (2), 1905 Falls set, 1909-12 to 3/-, 1910-13 Double Heads ½d. (2), 1d. (2), 2d., 2½d. (7), 3d., 4d. (9 including two pairs), 5d. (2), 6d. (4 including a vertical pair), 8d. (3), 10d., 1/-, 2/-, 2/6d. (2), 3/-, 5/- (2), 7/6d. (2) and 10/- and 1913-24 Admirals to £1, then a range of modern issues to 1966 plus Rhodesia and Nyasaland including 1954-56 ½d. to £1 and 1959-62 ½d. to £1; the vast majority unmounted £4,000-5,000



1339

- x1339 ★ 1898-1908 ½d. dull bluish green and 1909-12 1d. carmine rose horizontal pairs, variety **imperforate between**, part original gum; fine. S.G. 75aa, 101b, £1,300. Photo £350-450



1340

- x1340 ★ 1892-93 £10 brown, unused example without gum. Brandon Certificate (1997). S.G. 13, £2,750. Photo £250-350





1341

x1341 ★田

1898-1908 £5 deep-blue and £10 lilac, both in blocks of four, the £5 marginal from the top of the sheet; unused without gum. Signed E. Diena and with his certificate (1992). S.G. 92-93, £27,000. Photo

£2,700-3,200



1342

x1342 ⊕

1898-1908 £10 lilac, centred to upper left, fresh and fine unmounted mint. Richter Certificate (1997). S.G. 93, £3500. Photo

£1,000-1,200



1343

x1343 ★

1898-1908 £20 yellow-bistre, unused without gum, centred to foot, a fine example of this scarce high value. Scheller Certificate (2015). S.G. 93a, £16,000. Photo

£5,000-7,000

Rhodesia - *contd.*

## 1910-13 Double Head Issue

### Specimen Stamps



Ex 1344

x1344 ⑤

Short set of seventeen to £1 ( no ½d.), each overprinted "SPECIMEN", part to large part original gum; 10d. and 7/6 colour faded. S.G. £3,500 for full set. Photo

£800-1,000



Ex 1345

x1345 ⑤

½d. to £1, each overprinted "SPECIMEN", part to large part original gum; fine. S.G. 119s-185s, £3,500. Photo

£1,500-2,000



Ex 1346

x1346 ⑤

½d, 1d., 2d. (3), 2½d. (2), 3d. (2), 4d. (3), 5d. (2), 6d. (3), 8d., 10d., 1/- (3), 2/- (3), 2/6d. (2), 3/- (3), 5/- (3), 7/6d. (2), 10/- (4) and £1 (2), each overprinted "SPECIMEN", chiefly without gum, a few part original gum. S.G. 119s-185s. Photo

£2,500-3,500



Perf. 14



1347

x1347 ♂

½d. deep dull green, marginal block of sixteen from the top of the sheet with full imprint, unmounted mint, some hinge reinforcement in the margin only, a magnificent multiple. S.G. 122. Photo

£800-900

PROVENANCE:

Sir Gawaine Baillie, September 2006



1348

x1348 ★

5d. purple-brown and ochre **error of colour**, horizontal pair with large part original gum; right hand stamp with light crease at lower right, a scarce multiple. S.G. 141ab, £1,300. Photo

£300-400



**Rhodesia, 1910-13 Double Head Issue, Perf. 14 - *contd.***

x1349	5d. shades, seven unused and a used example in various shades including lake-brown and olive, chiefly fine and part to large part original gum. S.G. 141/143 group	£200-300
x1350 ★	1/- shades collection, comprising twenty-four unused examples including a range of basic shades and a lower marginal single with part imprint; chiefly fine and large part original gum. S.G. 151/153 group  PROVENANCE: Sir Gawaine Baillie, September 2006	£1,000-1,500
x1351 ★	1/- grey-black and blue-green and 2/- black and ultramarine both with <i>long gash in Queen's ear</i> , 5/- vermilion and deep green, 5/- scarlet and pale yellow-green and 10/- deep slate-green and deep orange; chiefly fine and part original gum	£450-550
x1352	2/- black and ultramarine, a range of unused (11) and used, chiefly fine and the unused with part to large part original gum. S.G. 153 group	£500-700
x1353 ★	2/6d. shades, a range of unused examples (16) including black and lake and sepia and deep crimson; chiefly fine and part original gum. S.G. 155/157 group	£2,500-3,500
x1354	5/- red and green, a range of unused (7) and a used example in chiefly fine condition, the unused with part original gum. S.G. 159/160 group	£800-1,000
x1355	7/6d., a small group comprising six unused examples, including carmine and pale blue, an unused bright carmine and blue, RSC "A" horizontal pair, large part original gum with some foxing and a small thin and finally a used example. S.G. 160b/161 group	£2,000-3,000



1356



1360



1361

x1356 ★	7/6d. carmine and pale blue, fairly well-centred example with part original gum, fine. S.G. 160b, £650. Photo	£250-350
x1357 ★	8d., a range of fourteen unused examples including an upper marginal example, chiefly fine and fresh; large part original gum. S.G. 147/148 group	£800-1,000

**Collection**

x1358	A mint and used collection on pages with Sir Gawainne Baillie's plating notes including perf. 15 4d. (25), perf. 14 1/- (4) plus an upper marginal mint pair, 2½d. (16) along with a block of four, ½d. (6), 1d. (19), 2d. (4), 3d. (4), 6d. (15), £1 (7); a combination of mint and used and in chiefly fine condition	£3,000-5,000
-------	-------------------------------------------------------------------------------------------------------------------------------------------------------------------------------------------------------------------------------------------------------------------------------------------------------------------------	--------------

**Perf. 15**

x1359 ☉	2½d. ultramarine imprint block of ten from the top of the sheet, also similar perf. 14 block, both unmounted mint; fine.	£500-700
x1360 ☉	£1 (bright) carmine and (greenish blue) slate, RSC "E", fine unmounted mint. Photo	£800-1,000
x1361	£1 black and red, a fine used example. P.F.S.A (1978) and Brandon (2001) Certificates. S.G. 179, £3,250. Photo	£1,500-1,700

**A Magnificent Pair**



1362

x1362 ★

£1 red and black, lightly mounted mint vertical pair, mounted on lower stamp only, a couple of minor stain spots as mentioned on the certificate; a magnificent pair. B.P.A. Certificate (2000), S.G. 179, £36,000. Photo

£16,000-18,000

## Rhodesia, 1910-13 Double Head Issue - *contd.*

Perf. 13½



1363

x1363 ★

1d. bright carmine, part original gum; curved gum crease at lower right though of fine appearance. A rare stamp. B.P.A. Certificate (1976). S.G. 183, £2,000. Photo

£500-600

x1364

A mainly mint collection housed in blue Kabe album including a range of perf. 14, 15 and 13½ stamps in duplicate to 10/- including a number of marginal examples and blocks of four, also 1d. lower marginal block of twenty-five, 10d. upper marginal block of six, along with a selection of clandestine roulette blocks of four and a selection of file sheet sample singles, blocks of three, four and much larger including ½d. strip of seven and block of twenty eight and 2½d. sheet of fifty, a fine and useful assembly with many ex Lord Steinberg and Sir Gawainne Baillie items; viewing recommended. Photo

£6,000-8,000

## ST. HELENA



Ex 1365

Ex 1366

x1365

1856-97 attractive and valuable mint and used small accumulation including 1856 6d. imperf. mint (5) and used, 1861 6d. (3), 1863 1d. (7), 4d. (5), 1884-94 set with extras and 1890-97 set, condition is chiefly fine and fresh. Cat. £23,000+. Photo

£4,000-6,000

x1366 ☉

1863-1970 mint collection in a stockbook including 1863 (July) 4d. (regummed, cut-into and foot and creased), 1864-80 CC 1d. (2) and 1/- (2), 1890-97 ½d. to 10d., 1903 CC ½d. to 2/-, 1908-11 ½d. (3), 4d. (2), 6d. (2) and 10/- (a little faded), 1912-16 ½d. to 3/- with some additional values including 2/- with plate number, 1922 Script ½d. (2), 1d. (2) and 2½d. (3), 1922-27 MCA 4d. to £1 and Script ½d. to 15/- with some additional values to 5/- (2), 1934 Centenary ½d. to 10/- (2), 1938-44 ½d. to 10/- and then complete to 1966; the vast majority unmounted. Cat. £5000+. Photo

£2,000-2,500



- x1367 ☼ 1922-27 Script ½d. marginal pair and 1d. with *broken mainmast* and 1½d. and 3d. marginal vertical pairs showing *torn flag*, fine unmounted mint. Cat. £400 £120-150
- x1368 ☼ 1922-27 MCA 4d. and Script ½d. corner pair, 2d., 3d. corner pair and single, 5d. and 6d., each showing *cleft rock*, fine unmounted mint. Cat. £1220 £400-500



1369



1370



1371

- x1369 ☼ 1922-27 Script 1/6d. grey and green on green with *cleft rock*, fine unmounted mint. S.G. 107c, £450. Photo £120-150
- x1370 ☼ 1922-27 MCA £1 grey and purple on red, fresh and fine unmounted mint. S.G. 96, £450. Photo £150-180
- x1371 ★ 1922-37 MCA £1 grey and purple on red, large part original gum, fine. S.G. 96, £450. Photo £150-250



1372



1373

- x1372 ☼ 1922-27 MCA £1 grey and purple on red showing *torn flag*, fine unmounted mint. Rare. S.G. 96b, £4250. Photo £1,500-1,800
- x1373 ☼ 1922-27 Script 15/- grey and purple on blue, fresh and fine unmounted mint. S.G. 113, £1100. Photo £400-500

## ST. KITTS-NEVIS

- x1374 ☼ 1903-70 mint collection in a stockbook including 1903 CA ½d. to 2/6d., 1905-18 MCA ½d. to 5/- with some duplication, 1920-22 MCA 2/- (2), 2/6d. (3), 5/- (3), 10/- (4) and £1, 1921-26 Script ½d. to 5/- with some duplication, 1923 Tercentenary ½d. to £1 with some duplication including 2/- and 5/-, 1938-50 ½d. to £1 with some shade/perf changes and 1949-65 complete; the vast majority unmounted. Cat. £2800+ £800-1,000
- x1375 ★ 1923 Tercentenary ½d. to 2/6d. (2 sets) plus one example of the 10/- black and red on emerald; large part original gum, fine. S.G. 48-58, £620+ £150-250



Ex 1376

1377

- x1376 ★ 1923 Tercentenary ½d. to £1, large part original gum, fine. S.G. 48-60, £1,200. Photo PROVENANCE: Sir Gawainne Baillie, 2006 £500-600
- x1377 ☼ 1923 Tercentenary £1, fresh and fine unmounted mint. S.G. 60, £800. Photo £300-400

## ST. LUCIA

- x1378 ☼ 1881-1968 mint collection in a stockbook including 1881 ½d. and 2½d., 1882-84 6d., 1883-86 Die I ½d. (2), 1d. (2), 2½d., 4d. and 6d., 1891-98 ½d. to 10/- (2), 1891-92 Die I ½d. on half 6d. and Die II ½d. on 3d. (2), 1902-03 CA ½d. to 1/- (2 sets, one overprinted "SPECIMEN"), 1904-10 MCA to 5/- green and red on yellow, 1912-21 MCA ½d. to 5/- (2) less 6d., 1921-20 Script ½d. to 5/-, 1936 ½d. to 10/-, 1938-48 ½d. to £1 with perf changes, 1949-50 1c. to \$4.80, 1953-63 1c. to \$2.50 and 1964-69 1c. to \$2.50; the vast majority unmounted. Cat. £2400 approx. £700-900
- x1379 ★ 1860-92 valuable mint selection including 1860 1d. (2) and 4d. (2), 1863 1d. (6 including watermark reversed), 4d. (4), 6d. (5) and unissued ½d. on 6d., 1864-76 perf. 12½ 1d. (2), 4d. (2 including watermark reversed), 6d. and 1/-, 1864-76 perf. 14 1d., 4d., 6d. (2) and 1/-, 1881 ½d. (2) and 2½d. (2) etc., generally fine to very fine. Cat. £9,000 £1,400-1,600

## ST. VINCENT

- x1380 1863-1970 mint and used collection mounted on pages with strong early issues with duplication including 1866 perf. 11 to 12½ 1. rose-red used with R.P.S. Certificate (1961), 1862-68 4d. deep blue mint and used (3), 1890 2½d. on 4d. chocolate with **no fraction bar** with Sismondo Certificate (2005), 1904-11 set to £1 mint, later period generally complete; chiefly fine £1,400-1,600



1381

x1381 ☒

1864 (9 Oct.) entire letter to Paris, bearing 1861 1d. red, two horizontal pairs and 1862-66 6d. dark green (2), each tied by barred "A10" obliterator, showing "SAINT VINCENT OC 09 64" c.d.s. and "LONDON OC PAID" with, on reverse, arrival d.s. (30.10); a fine and striking first issue cover, part of the Polignanc correspondence to France. Photo

£1,200-1,400



1382

x1382 ★

1880 5/- rose-red, fairly well centred, large part original slightly toned gum. S.G. 32, £1,100. Photo

£250-350

x1383 ☉

1882-1970 mint collection in a stockbook including 1882-83 1d. and 2½d. on 1d., 1885 1d. on 2½d. on 6d., 1899 ½d. to 5/-, 1902 CA to 1/-, 2/- (2) and 5/-, 1904-11 MCA to £1, 1907-11 Arms, 1913-17 MCA to £1, 1921-32 Script ½d. to £1 (2), 1938-47 ½d. to £1 with duplication, 1949-52 1c. to \$4.80, 1955-63 1c. to \$2.50, 1963-67 1c. to \$5 and 1970 ½c. to \$10; the vast majority unmounted. Cat. £1600+

£400-500



## SAMOA

x1384 ☉

1914-67 unmounted mint collection on Hagner leaves including 1920 Victory set, 1921 ½d. to 1/-, 1925-28 5/- and 10/-, 1935 Cowan £5, 1945-53 10/-, 1955 5/- (2), 10/-, £1 and £2, and 1967 1s. to \$4. Cat. £630+

£150-180

## SARAWAK



Ex 1385

x1385 ☉

1869-65 mint collection in a stockbook including 1869 3c., 1875 4c. block of twenty-five (two defective at top), 1888-97 1c. to \$1 with additional 1c. to 32c., 1888-92 1c. (Type 5) on 3c., 5c. (Type 8) on 12c. pair and single and 5c. (Type 9) on 12c., 1895 2c. to 8c., 1899-1908 1c. to \$1 plus unissued 5c. and 8c. marginal imperforate plate proof, 1918 no wmk 1c. to \$1 with some duplication and unissued 1c., 1922-23 1c. to 30c., 1928-29 1c. to \$1 (2 sets), 1932 1c. to \$1, 1934-14 1c. to \$10 (2 sets), 1945 BMA 1c. to \$10 and 1946-63 complete; virtually all unmounted. Cat. £4200+. Photo

£1,200-1,500



1386

x1386 ☉

1888-97 \$2 green and blue, \$5 green and violet and \$10 green and carmine, prepared for use but not issued, fine unmounted mint. Ceremuga Certificate (2015) for each. S.G. 21a-21c, £3,800. Photo

£3,000-5,000

x1387 ⑩

1934 1c. to \$10 set twenty imperforate plate proofs, four marginal with part imprint, fine unmounted. Cat. £1300

£300-400

## SEYCHELLES



Ex 1388

x1388 ☉

1890-1970 mint collection in a stockbook including 1890 Die I 4c., 8c. (2), 10c., 13c. (3), 48c. and 96c. (2), Die II 2c. (3), 4c., 8c., 13c. and 16c. (2), 1893 45c. on 48c. block of four and single and 90c. on 96c. (2), 1893 (Nov.) 3c. to 45c., 1897-1900 2c. to 2r.25, 1891 3c. on 10c. and 3c. on 36c. both variety **surcharge double** (both gum toned), 1902 (June) surcharges, 1903 CA 2c. to 2r.25 less 18c., 1906 MCA 2c. to 2r.25, 1921-32 Script 2c. to 5r. with some duplication, 1938-49 2c. to 5r. with some duplication, 1952 1c. to 10r., 1954-61 2c. to 10r., 1962-68 5c. to 10r. and 1969 5c. to 15r. plus B.I.O.T 1968-70 complete; the vast majority unmounted. Cat. £4500 approx. Photo

£1,500-1,800

## SIERRA LEONE



Ex 1389

x1389 ☉

1859-1966 mint collection in a stockbook including 1859-74 no wmk 6d. violet and 6d. reddish lilac (2), 1872-73 CC sideways 1/- and upright 1d., 1876 CC ½d., 1d., 1½d., 3d. and 1/-, 1884-91 CA ½d. to 1/- with some duplication, 1885-86 CC 6d. (5), 1896-97 ½d. to £1, 1903 CA to 5/- (some gum toned) and £1, 1904-05 MCA to £1, 1907-12 ½d. to £1, 1912-21 MCA to 10/- and £1, 1921-27 Script to 10/- and £2 (lightly gum toned), 1932 ½d. to £1, 1933 Willberforce ½d. to £1, 1938-44 ½d. to £1 and 1956-61 ½d. to £1; the vast majority unmounted. Cat. £6800+. Photo

£2,000-2,500

Sierra Leone - *contd.*



1390

x1390 ☉

1897 2½d. on 6d. dull purple and green lower right corner plate number block of eight (4x2) comprising Types 8 (5), 10, 11 and 12, mounted in the selvedge only, fine. S.G. 59-61, £572. Photo

£150-180



1391



1392

x1391 ★

1912-21 MCA £5 orange and green, large part original gum, vivid colours, fine. S.G. 130, £3,750. Photo

£1,500-1,700

x1392 ★

1921-27 Script £2 blue and dull purple, an upper marginal example with plate number "1", small part original gum; some staining to reverse in the upper margin only. S.G. 147, £900. Photo

£200-400





1393

- x1393 ☉ 1921-27 Script £5 orange and green, a marginal example from the lower left corner of the sheet with plate number, fresh and fine unmounted mint. Signed Fechenbauer in pencil on reverse. B.P.A. Certificate (1968). S.G. 148, £3,500. Photo £2,000-4,000



Ex 1394



Ex 1395

- x1394 ☉ 1933 Wilberforce ½d. to £1 set of thirteen, fine unmounted mint. S.G. 168-180, £1100. Photo £300-400
- x1395 ★ 1933 Wilberforce ½d. to £1, with values to 1/- in vertical pairs; also the same set to 10/- large part original gum. S.G. 168-180. Photo £400-600

## SINGAPORE

- x1396 ☉ 1948- unmounted mint collection on Hagner leaves including 1948-52 perf 14 1c. to \$5 and perf 17½x18 1c. to \$5, 1948 Wedding, 1955-59 1c. to \$5, 1962-66 1c. to \$5, 1968 1c. to \$10 and 1969 Anniv. 15c. to \$10 and miniature sheet. Cat. £1400+ £350-450

## SOMALILAND

- x1397 ☉ 1903-60 mint collection in a stockbook including 1903 (June) to 1r., 2r., 3r. and 5r., 1903 (Sept-Nov.) QV 2r., 5r. (3) and KE ½a. to 8a. with duplication, 1904 CC 2r. (2), 3r. and 5r., 1905-11 ½a. to 12a., 1912-19 MCA to 1r., 2r., 3r. (gum toned) and 5r. (2, one slightly toned), 1938 ½a. to 5r., 1942 ½a. to 5r., 1951 5c. on ½a. to 5s. on 5r. and 1953-58 5c. to 10s.; the majority unmounted. Cat. £1800+ £400-500



1398

- x1398 ☉ 1904-05 CA 2a. dull and bright purple overprinted "SPECIMEN", variety **no stop after "M"**, a useful alternative to the issued stamp with the error; horizontal gum crease not affecting appearance. S.G. O12as. Photo £200-300

## SOUTH AFRICA

- x1399 ☉ 1910-61 mint collection in a stockbook including 1913-24 ½d. to £1 with some duplication including 5/- and £1 (slightly gum toned), and coil ½d. to 2d., 1927-30 Pictorial 10/- vertical pair, 1930-44 Pictorial to 2/6d. (both), 1933-48 to 10/-, 1935 Jubilee and 1954 ½d. to 10/-; the majority unmounted £500-600

## SOUTHERN NIGERIA

- x1400 ☉ 1901-12 mint collection on Hagner leaves including 1901-02 ½d. to 10/-, 1903-04 CA to 2/6d., 5/-, 10/- (2) and £1 (faded), 1904-09 MCA ½d. to 5/-, 1907-11 ½d. to £1 with some duplication (some gum toned) and 1912 ½d. to 10/- (2) and £1 (4); mostly unmounted. Cat. £1900+ £500-600



Ex 1401

- x1401 ★ 1907-11 ½d. to £1, three sets with part to large part original gum, plus two additional £1 values. S.G. 33-44, £1,700. Photo £600-800

## SOUTHERN RHODESIA

- x1402 ☉ 1924-66 unmounted mint collection in a stockbook including 1924-29 ½d. to 5/- (2 sets) with duplication to 2/-, 1931-37 ½d. to 5/- with many perf changes including 1½d. block of four and a single perf 12, 1/-, 1/6d., 2/- and 2/6d. perf 11½ and 1/- perf 14, 1937 ½d. to 5/-, 1953 ½d. to £1 and 1964 ½d. to £1. Cat. £2000 approx £700-900



1403

- x1403 ★ 1924-29 perf. 14 1½d. bistre horizontal pair, variety **imperforate between**; fine with large part original gum. Very rare. B.P.A. Certificate (1979). S.G. 3a, £15,000. Photo £10,000-12,000

## SOUTH WEST AFRICA

- x1404 ☉ 1923-63 unmounted mint collection in a stockbook including 1923 Setting I ½d. to 2/6d. and Setting II 5/-, 1923-26 Setting III 1/3d., 2/6d. and 5/-, and Setting VI ½d. to £1 with additional 2/6d., 5/- with plate number, 10/- and £1, 1927 Pictorial 2d. to 10/-, 1927-30 KGV £1 and Pictorial 1/- (2), 2/6d., 5/- and 10/-, 1931 Pictorial ½d. to 20/-, 1938 Vootrekker Memorial, 1939 Huguenots Landing, 1954 ½d. to 10/- and 1961 ½c. to 1r. Cat. £2700+ £800-1,000

## SUDAN

- x1405 1905-24 mint and used collection on leaves with 1905 "ARMY" reading down 1m. mint and used, pane of thirty unused with varieties, 1m. with "ARMY" reading down small overprint used, cover with 1m. with "ARMY" reading down at right (inverted small type), 1m. **overprint inverted** mint with R.P.S. Certificate, other panes of thirty, some other varieties noted including overprint double, overprint inverted etc. A good lot with high catalogue value £1,000-1,200

## SWAZILAND

- x1406 ☉ 1889-1969 unmounted mint collection in a stockbook including 1889-90 ½d. to 1/-, 2/6d. (2) and 5/- (2), not all guaranteed, 1933 ½d. to 10/- (2), 1938-54 ½d. to 10/- with perf changes, 1948 Wedding, 1956 ½d. to £1, 1961 ½c. on ½d. to 2r. on £1 with all types except 25c. Type II bottom left, 1961 ½c. to 2r., 1962-66 ½c. to 2r. and 1968 ½c. to 2r. Cat. £3500 £1,000-1,200



## TANGANYIKA



1407

x1407 ⑥

1917-21 G.E.A. 1c. and 10c. to 50r., imperforate plate proofs in issued colours on gummed paper, unmounted mint; just six sets believed to exist. B.P.A. Certificate (1987). Photo

£4,500-6,500



1408

x1408 ⑥

1917-21 MCA 50r. carmine and green overprinted "SPECIMEN", unmounted mint. S.G. 62s, £300. Photo

£100-150

x1409 ⑥

1917-21 MCA to 1r. (2), 3r. and 10r., 1921 Script 5r., 1922-34 5c. to £1 and 1927-31 5c. to £1 with additional 2/- (2), 5/- and 10/- (2, one with plate number), unmounted mint. Cat. £1800+

£600-800

## TASMANIA



Ex 1410

- x1410 ☉ 1892-99 ½d. to £1 set of ten, fresh and fine unmounted mint. S.G. 216-225, £750.  
Photo for £1 £250-300

## TOGO

- x1411 1914-15 overprint mint and used collection in small stockbook including Type 1 40pf. carmine mint (10 including block of four) and used (2), 80pf. black and carmine on rose mint (6) and used (2), some French Occupation issues to 80pf., marginal examples, blocks of four etc., a useful and valuable assembly £4,000-6,000

## TONGA



1412

- x1412 ★ 1897 7½d. black and green, variety **centre inverted**, a marginal example from the upper left of the sheet; some staining and small part original toned gum, nevertheless a fine example of this rarity. A.P.S. (1993) and Sismondo (2012) Certificates. S.G. 48a, £9,000.  
Photo £2,000-4,000

## TRANSVAAL



1413

- x1413 ★ 1903 CA £5 orange-brown and violet, a well-centred example with large part original gum, fine. Sismondo Certificate (2006). S.G. 259, £2,250. Photo £750-850

## TRINIDAD AND TOBAGO

- x1414 1851-1909 mint and used collection housed in a stockbook including 1851-55 selection, mint (8) and used (4), 1859 4d. and 1/- unused, 1860 clean-cut perf 1d., 4d. and 6d. (2), 1862-63 4d. unused and 1/- used, selection of later Britannias, 1869 5/- unused, 1896-1906 5/- and £1 mint, Tobago with values to 6d. and a range of Trinidad and Tobago to modern with some Postage Dues; condition mixed but many of the early Britannias fresh and fine, viewing recommended £1,000-1,500
- x1415 1852-1953 collection on album pages; largely complete Trinidad with 1851-55 issue mint and some in strips of three and blocks of four and including 1852-60 1d. blue used with B.P.A. Certificate (1991), 1859 pin-perf 12½ 1/- purple-slate mint (re-perforated and disturbed gum as per A.P.S. Certificate), Tobago fairly complete and with 1879 CC set to 5/- used, Trinidad and Tobago largely complete mint; a useful and valuable lot £5,000-7,000
- x1416 ☉ A mint collection in a stockbook including Trinidad 1896-1906 5/- (2) and 1901-06 5/- and Trinidad and Tobago including 1913-23 MCA 5/-, 1922-28 ½d. to £1, 1935-37 1c. to 72c. with perf changes, 1938-44 1c. to \$4.80, 1953-59 1c. to \$4.80 and 1960-67 1c. to \$4.80; the vast majority unmounted. Cat. £780+ £200-250

## TRISTAN DA CUNHA

- x1417 ☉ 1952-70 unmounted mint collection including 1952 ½d. to 10/-, 1954 ½d. to 10/-, 1961 ½c. to 1r., 1963 Resettlement and 1965-67 ½d. to £1. Cat. £390+ £100-120





**TURKS AND CAICOS ISLANDS**

- x1418 ☉ 1900-70 mint collection in a stockbook including 1909 2/-, 1913-21 MCA ½d. to 3/- with some duplication, 1921 Script ¼d. to 1/-, 1922-26 ¼d. to 3/- with some duplication, 1928 ½d. to 10/-, 1938-45 ¼d. to 10/-, 1950 ½d. to 10/-, 1957 1d. to 10/-, 1960 £1 and 1967 1d. to £1; virtually all unmounted. Cat. £700+ £200-250

**VIRGIN ISLANDS**

- x1419 ★ 1866-99 mint collection on three album pages (52) including 1866 white paper 6d. (2), 1867-70 white paper 1/-, toned paper 6d., 1/- (2), 1879-80 1d., 2½d., 1888 4d. on 1/- on white and toned papers, 1899 set etc. unused to part original gum, chiefly good to fine £400-600
- x1420 ☉ 1866-1970 unmounted mint collection on Hagner leaves including 1866 toned paper 6d., 1867-70 perf 15 1d., 1879-80 CC ½d. and 2½d., 1883-84 CA ½d. yellow-buff, 1887-89 1d. (2), 4d. (2), 6d. and 1/-, 1899 ½d. to 5/- less 1/-, 1904 ½d. to 6d. and 2/6d., 1913-19 MCA ½d. to 1/- and 5/-, 1921 Script ½d. (2) and 1d. (2), 1922-28 MCA 3d. to 5/- and Script ½d. to 5/-, 1938-47 ½d. to £1, 1952 1c. to \$4.80, 1956-62 ½c. to \$4.80 and 1964-48 1c. to \$2.80. Cat. £1400+ £400-500
- x1421 ☉ 1938-47 ordinary paper and chalk-surfaced paper fresh mint sets of twelve to £1, also 10/- and £1 each perforated "SPECIMEN" and 10/- and £1 in unmounted blocks of four from the left of the sheet, a fine group. S.G. 110a-121, 120s-121s £190-220

**ZANZIBAR**

1422

- x1422 ☉ 1908-09 200r. brown and greenish black, unmounted mint, well-centred; some tiny stain marks to reverse. Signed A. Diena. S.G. 245, £1,800. Photo £650-750



**Spink Live is now running on a new and improved bidding platform**  
**Accessible online through [www.spink.com](http://www.spink.com) and also available iOS and Android devices**  
**Bidding on 'Spink Live' remains free of charge**






**MY ACCOUNT**  
 Login  
 Consign An Item  
 Watched Lots  
 My Bids

☒ Medals  
☒ Stamps  
☐ Watches  
☒ Whiskies & Spirits  
☒ Wines



LOT 3  
SEAL 5 songs,  
including all  
US\$7,000



LOT 4  
RANDY CRAWFORD  
& JOE SAMPLE, 4  
US\$7,000

Lot 2010 - CURRENT B  
 Slide to bid €

CURRENT
HISTORY






For any enquiries or further assistance please contact:  
 Tel: +44 (0)20 7563 4112 | Email: [spinklives@spink.com](mailto:spinklives@spink.com)



WHERE HISTORY IS VALUED

## COLLECTIONS AND RANGES

x1423 ☼

A range in a stockbook and on Hagner leaves including Christmas Island, Cocos Islands, Jaipur 1931 ¼a. to 8a., Niger Coast 1892-94 ½d. to 1/-, Norfolk Island, Pitcairn Islands, Sabah 1964-65 1c. to \$10, Tonga 1953 1d. to £1, and Transvaal including 1903 CA 2/- and 1904-09 MCA 2/- to £1; the vast majority unmounted

£400-500



Ex 1424

x1424 ★

A mint selection laid out on Hagner pages including Ascension 1934 set to 5/-, Bermuda 1918 to 10/-, Falkland islands 1898 2/6d. and 5/- and 1904-12 3/- and 5/-, Gibraltar 1903 8/-, 1912 £1, K.U.T. 1912-21 10r. and 1922-27 £1, Rhodesia 1910 Double Heads 5d., 6d., 1/- and 2/-, Nauru with values to 10/- etc. An eclectic group in chiefly fine condition, viewing recommended. Photo

£500-700



Ex 1425

x1425 ★

A useful and valuable selection of mint Empire sets and single stamps (12) including Bahamas 1902-07 set of seven to £1, Bermuda 1918-22 set to £1, British Guiana 1934-51 set to £1 each perforated "SPECIMEN", British Solomon Islands 1914-23 set to £1 and 1922-31 set to 10/-, K.U.T. 1904-07 set to 5r., Tanganyika 1927-31 set to £1 etc.; chiefly fine and large part original gum. Photo

£1,400-1,600

x1426 ★

1871-1958 British Pacific mint collection on album pages including Fiji with 1903, 1906-12, 1912-16 and 1921-23 sets to £1, Gilbert and Ellice Islands 1912-19 set to 5/-, 1924 to 10/-, New Hebrides with 1908-09 set to 1/-, 1911 set to 5/-, 1938 set to 10fr., Solomon Islands 1914 set to £1 and Tonga including 1886 set to 1/-, 1897 set to 5/- etc.; chiefly fine

£1,700-2,000





Ex 1427

x1427

A selection of mint and used ex-auction lots (17) including Canada 1852-57 6d. greenish-grey used, Cape of Good Hope (13 lots) with 1853 1d. pale brick-red on blued paper used, 1853 4d. deep blue on blued paper used pair, 1858 1d. rose on white paper used pair, 1858 1/- bright yellow-green used pair, 1864 4d. blue five used examples, 1864 6d. bright mauve four used examples, 1864 1d. deep carmine-red block of four used on large piece, Gambia 1880 3d. pale dull ultramarine unused block of twelve, Mauritius 1848-59 Post Paid 1d. orange-red latest impression used and Papua New Guinea 1932-40 set to £1 mint etc, a useful and attractive assembly in chiefly fine condition. Photo

£2,000-3,000



Ex 1428

x1428 ★

An attractive and valuable selection of mint Empire sets and single stamps including South Australia 1886-96 £3 to £20 overprinted "SPECIMEN", Canada 1903-12 50c. deep violet, Cayman Islands 1935 set to 10/-, Newfoundland 1928-29 2c. carmine and 3c. brown each in a block of four and dramatically misperforated, Nigeria 1936 set to £1, St. Helena 1922-37 £1 block of four, also sets and singles from Rhodesia, Sudan, Transvaal etc. An eclectic lot worthy of closer inspection. Photo

£2,000-3,000



Ex 1429

x1429 ★

A valuable selection of mint Empire sets and single stamps (22) including Bermuda 1918-22 set to £1, British Honduras 1913-21 set to \$5, Canada 1898 10c. brownish purple, Gambia 1869-72 4d. and 6d., Gold Coast 1921-24 15/- (both), K.U.T. 1922-27 set to £1, 1935-37 set to £1, Lagos 1876-79 set to 1/-, also full sets and better singles from Labuan, North Borneo, Nova Scotia, Rhodesia, St. Helena, St. Vincent, Tanganyika etc; a useful assembly in chiefly fine condition. Photo

£2,500-3,500



Collections and Ranges - *contd.*



Ex 1430

- |         |                                                                                                                                                                                                                                                                                                                                                                                                                                                                                                                                                                                                                                                                                                                                                                                                                                                                                                                                                                   |                |
|---------|-------------------------------------------------------------------------------------------------------------------------------------------------------------------------------------------------------------------------------------------------------------------------------------------------------------------------------------------------------------------------------------------------------------------------------------------------------------------------------------------------------------------------------------------------------------------------------------------------------------------------------------------------------------------------------------------------------------------------------------------------------------------------------------------------------------------------------------------------------------------------------------------------------------------------------------------------------------------|----------------|
| x1430 ★ | <p>1859-1956 British Empire mint collection on album pages with strength in Cyprus with 1881 CC set to 6pi, 1882-86 CA set to 12pi., 1882 ½ on ½pi., 1892-94 set to 12pi., 1904-10 set to 45pi., 1924 CA £1, 1928 set to £1 etc; also Batum, Heligoland, Ionian Islands and better Malta; chiefly fine. Photo</p>                                                                                                                                                                                                                                                                                                                                                                                                                                                                                                                                                                                                                                                 | £3,000-5,000   |
| x1431 ☉ | <p>1884-1969 mint collection in two albums with "SPECIMEN" sets (almost complete for each country), including Australian States with Queensland Chalon Specimens, Tasmania with reprints of the early issues, 1892-99 Specimen set, etc., New South Wales, Victoria with Postage Dues, 1901-12 c.t.o., Fiji including 1912-23 and 1938-55 Specimen sets, Gilbert &amp; Ellice including. 1912-24 and 1939-55 Specimen sets, Labuan including 1885-86 Specimen set, Nauru including 10/- Seahorse Specimen (vertical bend), New Hebrides (British &amp; French), New Zealand, New Guinea with 1935 &amp; 1939 Bulolo sets, Papua with various Lakatoi issues c.t.o. from 1910-31, 1932 Specimen set of two, etc., Pitcairn including 1941 Specimen set, Sarawak including 1934-41 set, Solomon Islands 1914-1946 sets, Tonga, etc., throughout the issues up to about 1910 are stuck down, inspection is vital, otherwise mostly fine and fresh. Cat. £36,000+</p> | £6,000-8,000   |
| x1432 ☉ | <p>1884-1969 British America mint collection with "SPECIMEN" sets generally complete for each country, including British Guiana, British Honduras, Dominica, Grenada, Jamaica including 1921 unissued 6d Specimens (both watermarks), Leeward Islands with 1897 Jubilee set (5/- creased), 1921-32 and 1938-51 Specimen sets to £1, Montserrat, Trinidad with 1869 5/- perf. 12½ and 1876 Britannia 6d. "SPECIMEN" (not recorded by Bendon), 1883-94 Specimen set, etc., some stamps with corner creases, St. Lucia, St. Kitts including 1923 Centenary Specimen set (£1 creased), St. Vincent, Turks and Virgin Islands; throughout the issues up to about 1910 are heavily hinged to the album pages though could be lifted with care, otherwise mostly fine and fresh. Cat. £35,000+</p>                                                                                                                                                                       | £6,000-8,000   |
| x1433 ★ | <p>Huge mint British Empire collection in enormous album in chiefly clean, fine condition with most countries very well represented and of note are complete Aden and Ascension, good Bahrain, Bechuanaland, Brunei and Burma, Gibraltar with most sets to £1, Hong Kong with George VI to \$10 (both), a nice section of Iraq, K.U.T. with most sets from George V to £1, Kuwait, Malayan States with a nice range of Perak overprints and surcharges, Mauritius, Natal with values to £1, Nigeria with most sets with values to £1, fairly complete North Borneo, Nyasaland, Papua with values to £1, Sierra Leone with most sets to £1, Tanganyika sets to £1, a good section of Zanzibar plus many other countries along with blocks of four and extras. An extensive collection which is worthy of careful viewing to appreciate the scope and enormous catalogue value. Photo</p>                                                                           | £30,000-50,000 |

THE END OF THE SALE





Ex 1433



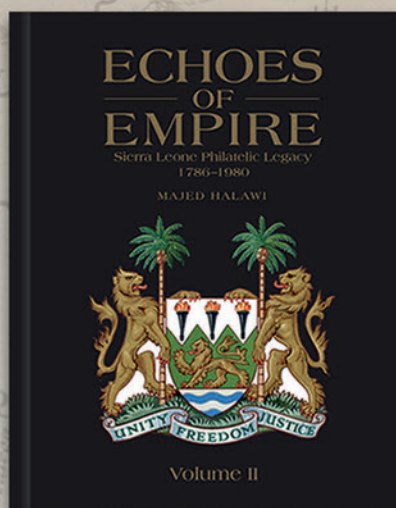
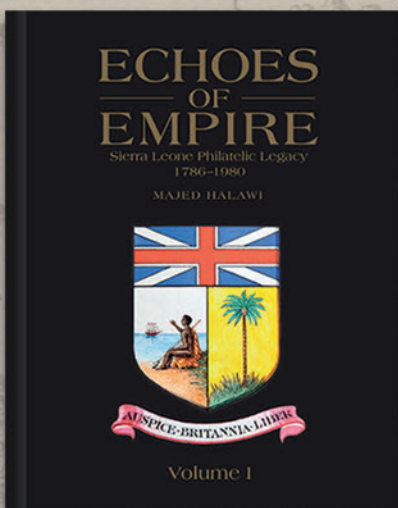
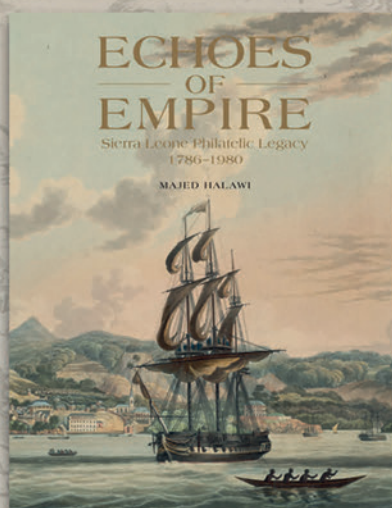
# SPINK

LONDON  
1666

ARRIVING SUMMER 2019

## ECHOES OF EMPIRE

Sierra Leone Philatelic Legacy 1786–1980



by Majed Halawi

Hardback, in two volumes with slipcase

Published in association with the BPA, these volumes are an essential addition to the libraries of all those who have an interest in social philately. Building on early works on Sierra Leone's stamps and postal history, Echoes of Empire offers detailed information, new interpretations, and illustrations spanning the entire period under study, relying on what could undoubtedly be considered as the finest collection of Sierra Leone philatelic material to have been assembled to date.

**PRE-ORDER NOW**

**RRP £60**

For more information, please contact the Spink Book Department  
Tel: +44 (0)20 7563 4119 | Email: [books@spink.com](mailto:books@spink.com)

SPINK London | 69 Southampton Row | Bloomsbury | London | WC1B 4ET

**[WWW.SPINKBOOKS.COM](http://WWW.SPINKBOOKS.COM)**



# SPINK

LONDON  
1666

## Sale Venue:

At The Royal Philatelic Society London  
15 Abchurch Lane  
2nd Floor  
London EC4N 7BW  
tel: +44 (0)20 7563 4005  
fax: +44 (0)20 7563 4037  
email: [auctionteam@spink.com](mailto:auctionteam@spink.com)

## WRITTEN BIDS FORM

This form should be sent or faxed to the Spink auction office in advance of the sale. References for new clients should be supplied in good time to be taken up before the sale. Bids received later than one hour before the start of the sale may not be processed.



NAME \_\_\_\_\_

ADDRESS \_\_\_\_\_

POSTCODE \_\_\_\_\_

69 Southampton Row, Bloomsbury,  
London WC1B 4ET  
tel: +44 (0)20 7563 4005  
fax: +44 (0)20 7563 4037  
email: [auctionteam@spink.com](mailto:auctionteam@spink.com)

YOU CAN ALSO BID IN REAL TIME ON SPINK LIVE.  
PLEASE DOWNLOAD SPINK LIVE APP FROM THE  
APP STORE OR VISIT [WWW.SPINK.COM](http://WWW.SPINK.COM),  
REGISTER AND LOG INTO THE SALE.

SALE TITLE

**The 'Lionheart' Collection of Great Britain  
and British Empire - Part X**

DATE

**Tuesday 17 September 2019  
at 1.30 p.m.**

CODE NAME

**LIONHEART**

SALE NO.

**19042**

I request Spink, without legal obligations of any kind on its part, to bid on the following Lots up to the price given below. I understand that if my bid is successful the Purchase Price will be the sum of the final bid and Buyer's Premium as a percentage of the final bid, any VAT chargeable, also postage charge and a fee for paying by card. The Rate of Buyer's Premium is 20% of the final hammer price of each lot. I understand Spink will pursue me for payment for any successful bid. In addition, I understand and consent that Spink may share my personal details relating to the default with other auction houses and live bidding platforms to protect themselves from such defaults.

All bids shall be treated as offers made on the Terms and Conditions for Buyers printed in the catalogue. I also understand that Spink provides the service of executing bids on behalf of clients for the convenience of clients and that Spink will not be held responsible for failing to execute bids. If identical commission bids are received for the same Lot, the commission bid received first by Spink will take precedence. Please note that you will not be notified if there are higher written bids received.

**BIDDERS PLEASE NOTE OUR EXTENSION CLAUSES IN OUR TERMS AND CONDITIONS FOR BUYERS  
PLEASE PRINT CLEARLY IN BLOCK LETTERS AND ENSURE THAT BIDS ARE IN STERLING**

Lot Number (in numerical order)	Price Bid £ (excluding Buyer's Premium)

Lot Number (in numerical order)	Price Bid £ (excluding Buyer's Premium)

Lot Number (in numerical order)	Price Bid £ (excluding Buyer's Premium)

☐ Please hold my purchased lots for collection

TEL. HOME \_\_\_\_\_ TEL. OFFICE \_\_\_\_\_

FAX \_\_\_\_\_ E-MAIL \_\_\_\_\_

SIGNATURE \_\_\_\_\_ VAT NUMBER \_\_\_\_\_

☐ I agree to receive notifications about Spink auctions, news and events via email and direct mail

☐ I agree to receive marketing notifications related only to the following categories (*please select as appropriate*)

**Autographs / Banknotes / Bonds & Shares / Books / Coins / Comics / Handbags / Jewellery / Maps / Medals / Stamps / Watches /  
Whiskies & Spirits / Wine / Corporate News & Events**

We will use the personal information you provide to us as set out in our privacy notice available at [www.spink.com/privacy-policy](http://www.spink.com/privacy-policy)

Continued ...

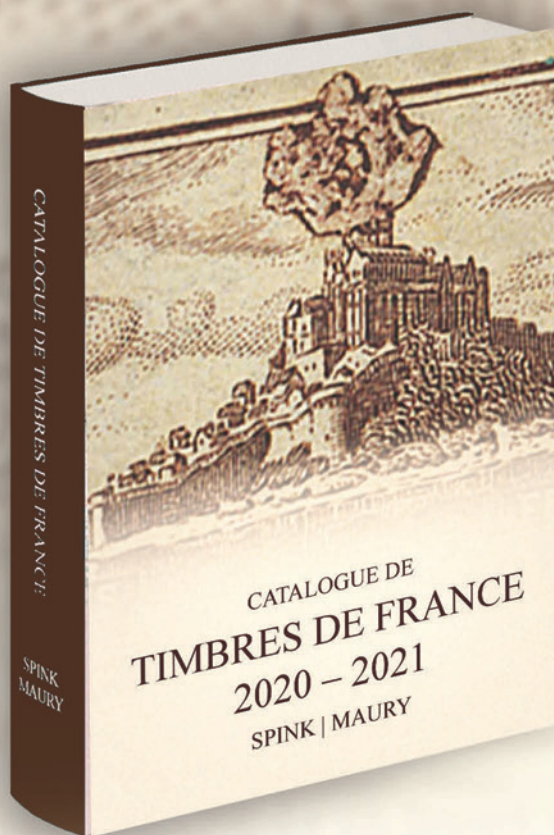


# SPINK

*WHERE HISTORY IS VALUED*

## THE SPINK MAURY CATALOGUE DE TIMBRES DE FRANCE 2020-2021

AVAILABLE SEPTEMBER 2019 - PRE-ORDER NOW



**123rd Edition**

**Hardback**

**210 x 148mm**

**736pp with colour illustrations throughout**

**ISBN: 978-1-912667-14-7**

The Spink Maury Catalogue has traditionally provided the highest level of detail for the stamps and covers of France and the French colonies, with thousands of top quality illustrations and prices updated every year. It was acquired by Spink in 2015, and the editors have since endeavoured to make this the premium reference work of its kind.

The catalogue includes stamps on cover, tete-beche issues, blocks, reprints, military mail, specimens, telegraphs, officials, parcel post, booklets, essays, proofs, airmails, precancels, postage dues, imperforate issues, balloon mail, occupation issues, telephone stamps, siege mail and war stamps, and is the authoritative work for any collector of French stamps, or anyone interested in this fascinating area of philately.

**RRP: £27.50 (+P&P)**

The enhanced 2020 edition includes stamps from the 'Hermione' collection of semi-modern France, and is as always an absolute must for collectors of French stamps.

---

For more information, please contact the Book Department:

Tel: +44 (0)20 7563 4119 | Email: [books@spink.com](mailto:books@spink.com)

SPINK LONDON | 69 Southampton Row | Bloomsbury | London | WC1B 4ET

---

**[WWW.SPINKBOOKS.COM](http://WWW.SPINKBOOKS.COM)**



# TERMS AND CONDITIONS FOR BUYERS

These conditions set out the terms on which we (**Spink and Son Limited** of 69 Southampton Row, Bloomsbury London WC1B 4ET (company no. 04369748)) contract with you (**Buyer**) either as agent on behalf of the Seller or as principal if we are the Seller. You should read these conditions carefully.

## 1 DEFINITIONS

The following definitions apply in these conditions:

<b>Auctioneers' Margin Scheme</b>	means a VAT margin scheme as defined by HM Revenue & Customs;
<b>Buyer's Premium</b>	means the charge payable by you as a percentage of the Hammer Price, at the rates set out in clause 5.1 below;
<b>Certificate of Authenticity</b>	means a certificate issued by an Expert Committee confirming the authenticity of a Lot;
<b>Expert Committee</b>	means a committee of experts to whom a Lot may be sent for an extension in accordance with clause 3.4.3;
<b>Forgery</b>	means a Lot constituting an imitation originally conceived and executed as a whole with a fraudulent intention to deceive as to authorship, origin, age, period, culture or source where the correct description as to such matters is not reflected by the description in the catalogue and which at the date of the auction had a value materially less than it would have had if it had been in accordance with the description in the catalogue. Accordingly, no Lot shall be capable of being a Forgery by reason of any damage and/or restoration work of any kind (including re-enamelling);
<b>Hammer Price</b>	means the amount of the highest bid accepted by the auctioneer in relation to a Lot;
<b>Lot</b>	means any item deposited with us for sale at auction and, in particular, the item or items described against any Lot number in any catalogue;
<b>Reserve</b>	the amount below which we agree with the Seller that the Lot cannot be sold;
<b>Seller</b>	means the owner of the Lot being sold by us;
<b>Spink Group</b>	Spink and Son Limited, our subsidiaries and associated companies.
<b>VAT</b>	value added tax chargeable under VAT and any similar replacement or additional tax; and
<b>VAT Symbols</b>	means the symbols detailing the VAT status of the Lot details of which are set out at the back of the catalogue.

## 2 SPINK'S ROLE AS AGENT

- 2.1 All sales undertaken by us either at auction or privately are undertaken either as agent on behalf of the Seller or from time to time, as principal if we are the owner of the Lot. Please note that even if we are acting as agent on behalf of the Seller rather than as principal, we may have a financial interest in the Lot.
- 2.2 The contract for the sale of the Lot will be between you and the Seller.
- 2.3 The Seller's sale of the Lot to you is subject to any terms and conditions, disclaimers or exclusions included with any promotional material or catalogue descriptions for the Lot, or otherwise notified to you by the Seller or us on their behalf.

## 3 BEFORE THE SALE

### 3.1 Examination of goods

You are strongly advised to examine personally any goods in which you are interested, before the auction takes place. Condition reports are usually available on request. We provide no guarantee to you other than in relation to Forgeries, as set out in clause 5.13 of these Terms and Conditions.

### 3.2 Catalogue descriptions

3.2.1 Statements by us in the catalogue or condition report, or made orally or in writing elsewhere, regarding the authorship, origin, date, age, size, medium, attribution, genuineness, provenance, condition or estimated selling price of any Lot are merely statements of opinion, and are not to be relied on as statements of definitive fact. Catalogue and web illustrations are for guidance only, and should not be relied on either to determine the tone or colour of any item. No lot shall be rejected on the grounds of inaccurate reproduction. No lot illustrated in the catalogue and online shall be rejected on the grounds of cancellation, centring, margins, perforation or other characteristics apparent from the illustration. Estimates of the selling price should not be relied on as a statement that this price is either the price at which the Lot will sell or its value for any other purpose.

3.2.2 Many items are of an age or nature which precludes their being in perfect condition and some descriptions in the catalogue or given by way of condition report make reference to damage and/or restoration. We provide this information for guidance only and the absence of such a reference does not imply that an item is free from defects or restoration nor does a reference to particular defects imply the absence of any others.

3.2.3 Other than as set out in clause 5.13, and in the absence of fraud, neither the Seller nor we, nor any of our employees or agents, are responsible for the correctness of any statement as to the authorship, origin, date, age, attribution, genuineness or provenance of any Lot nor for any other errors of description or for any faults or defects in any Lot. Every person interested should exercise and rely on his own judgment as to such matters.

### 3.3 Your Responsibility

You are responsible for satisfying yourself as to the condition of the goods and the matters referred to in the catalogue description.

### 3.4 Extensions – Stamps only

3.4.1 If you wish to obtain an expert opinion or Certificate of Authenticity on any Lot (other than a mixed Lot or Lot containing undescribed stamps) you must notify us in writing not less than forty-eight hours before the time fixed for the commencement of the first session of the sale. If accepted by us, such request shall have the same effect as notice of an intention to question the genuineness or description of the Lot for the purposes of clause 5.13 (Refund in the case of Forgery) of these Terms and Conditions and the provisions of clause 5.13 (Refund in the case of Forgery) shall apply accordingly.

3.4.2 Notice of a request for an expert opinion or Certificate of Authenticity must give the reason why such opinion is required and specify the identity of your proposed expert which will be subject to agreement by us. We reserve the right, at our discretion, to refuse a request for an expert opinion or Certificate of Authenticity including (without limitation) where the proposed expert is not known to us.

3.4.3 If we accept a request for an expert opinion or Certificate of Authenticity we will submit the Lot to the Expert Committee. You acknowledge and accept that the length of time taken by an Expert Committee to reach an opinion will vary depending on the circumstances and in any event is beyond our control.

3.4.4 We will not accept a request for an extension on account of condition. Any Lot described in the catalogue as having faults or defects may not be returned even if an expert opinion or Certificate of Authenticity cites other faults or defects not included in the catalogue description, other than in the case of a Forgery.

3.4.5 Should Spink accept a request for an extension under the foregoing provisions of this paragraph, the fact may be stated by the Auctioneer from the rostrum prior to the sale of the Lot.

3.4.6 It should be noted that any stamp accompanied by a Certificate of Authenticity is sold on the basis of that Certificate only and not on the basis of any other description or warranty as to authenticity. No request for an extension will be accepted on such a stamp and the return of such a stamp will not be accepted.

3.4.7 If you receive any correspondence from the Expert Committee in relation to the Lot, including but not limited to a Certificate of Authenticity, you must provide us with copies of such correspondence no later than 7 days after you receive such correspondence.

## 4 AT THE SALE

### 4.1 Refusal of admission

Our sales usually take place on our own premises or premises over which we have control for the sale, and we have the right, exercisable at our complete discretion, to refuse admission to the premises or attendance at an auction.

### 4.2 Registration before bidding

All bidders must be registered either by completing a registration form or creating an account online. Please be aware that we usually require buyers to present identification before making a bid at auction, undergo a credit check or provide a trade reference.

If you have not bid successfully with Spink in the past, or you are registering with us for the first time, we reserve the right to require a deposit of up to 50% of the amount you intend to spend. Such deposit will be deducted from your invoice should you be successful. If you are unsuccessful at auction, your deposit will be returned by the same means it was paid to Spink.

Some lots may be designated, prior to the auction, as "Premium Lots", which means a deposit may be required before placing a bid on the item for sale. Information will be posted on our website in such an event.

### 4.3 Bidding as Principal

When making a bid (**whether such bids are made in person or by way of telephone bids operated by Spink, commission or online or email bids**), you will be deemed to be acting as principal and will be accepting personal liability, unless it has been agreed in writing, at the time of registration, that you are acting as agent on behalf of a third party buyer acceptable to us.

### 4.4 Commission Bids

If you give us instructions to bid on your behalf, by using the form provided in our catalogues or via our website, we shall use reasonable endeavours to do so, provided these instructions are received not later than 24 hours before the auction. If we receive commission bids on a particular Lot for identical amounts, and at auction these bids are the highest bids for the Lot, it will be sold to the person whose bid was received first. Commission bids are undertaken subject to other commitments at the time of the sale, and the conduct of the auction may be such that we are unable to bid as requested. Since this is undertaken as a free service to prospective buyers on the terms stated, we cannot accept liability for failure to make a commission bid. You should therefore always attend personally if you wish to be certain of bidding.

- 4.5 On-line Bidding**  
We offer internet services as a convenience to our clients. We will not be responsible for errors or failures to execute bids placed on the internet, including, without limitation, errors or failures caused by (i) a loss of internet connection by either party for whatever reason; (ii) a breakdown or problems with the online bidding software and/or (iii) a breakdown or problems with your internet connection, computer or system. Execution of on-line internet bids on [www.spink.com](http://www.spink.com) and Spink Live is a free service undertaken subject to other commitments at the time of the auction and we do not accept liability for failing to execute an online internet bid or for errors or omissions in connection with this activity.
- 4.6 Telephone Bids**  
If you make arrangements with us not less than 24 hours before the sale, we shall use reasonable endeavours to contact you to enable you to participate in bidding by telephone, but in no circumstances will we be liable to either the Seller or you as a result of failure to do so.
- 4.7 Currency Converter**  
At some auctions, a currency converter will be operated, based on the one month forward rates of exchange quoted to us by Barclays Bank Plc or any other appropriate rate determined by us, at opening on the date of the auction. Bidding will take place in a currency determined by us, which is usually sterling for auctions held in London. The currency converter is not always reliable, and errors may occur beyond our control either in the accuracy of the Lot number displayed on the converter, or the foreign currency equivalent of sterling bids. We shall not be liable to you for any loss suffered as a result of you following the currency converter.
- 4.8 Video images**  
At some auctions there will be a video screen. Mistakes may occur in its operation, and we cannot be liable to you regarding either the correspondence of the image to the Lot being sold or the quality of the image as a reproduction of the original.
- 4.9 Bidding Increments**  
Bidding generally opens below the low estimate and advances in the following order although the auctioneer may vary the bidding increments during the course of the auction. The normal bidding increments are:
- |                    |                                  |
|--------------------|----------------------------------|
| Up to £100         | by £5                            |
| £100 to £300       | by £10                           |
| £300 to £600       | £320-£350-£380-£400 etc.         |
| £600 to £1,000     | by £50                           |
| £1,000 to £3,000   | by £100                          |
| £3,000 to £6,000   | £3,200-£3,500-£3,800-£4,000 etc. |
| £6,000 to £10,000  | by £500                          |
| £10,000 to £20,000 | by £1,000                        |
| £20,000 and up     | Auctioneer's discretion          |
- 4.10 Bidding by Spink**  
4.10.1 We reserve the right to bid on Lots on the Seller's behalf up to the amount of the Reserve (if any), which will never be above the low estimate printed in the auction catalogue.  
4.10.2 The Spink Group reserves the right to bid on and purchase Lots as principal.  
4.10.3 Lots with this symbol (Ⓢ) indicate that a party has provided Spink with an irrevocable bid on the lot that will be executed during the sale at a value that ensures that the lot will sell. The irrevocable bidder, who may bid in excess of the irrevocable bid, will be compensated based on his bid in the event he or she is not the successful bidder or may receive a fixed fee in the event he or she is the successful bidder. If the irrevocable bidder is the successful bidder, the fixed fee for providing the irrevocable bid may be netted against the irrevocable bidder's obligation to pay the full purchase price for the lot. If the irrevocable bid is not secured until after the printing of the auction catalogue, a pre-sale announcement will be made indicating that there is an irrevocable bid on the lot.  
If you are interested in placing an irrevocable bid in an auction, please contact us at [chairmanoffice@spink.com](mailto:chairmanoffice@spink.com). Typically, only some of the lots with an estimate, which must exceed £100,000 or equivalent in other currencies are open to irrevocable bids.
- 4.11 The Auctioneer's Discretion**  
The auctioneer has the right at his absolute discretion to refuse any bid to advance the bidding in such manner as he may decide to withdraw or divide any Lot, to combine any two or more Lots and, in the case of error or dispute, to put an item up for bidding again.
- 4.12 Successful Bid**  
Subject to the auctioneer's discretion, the striking of his hammer marks the acceptance of the highest bid, provided always that such bid is higher than the Reserve (where applicable), and the conclusion of a contract for sale between you and the Seller.
- 4.13 After Sale Arrangements**  
If you enter into any private sale agreements for any Lot with the Seller within 60 days of the auction, we, as exclusive agents of the Seller reserve the right to charge you the applicable Buyer's Premium in accordance with these Terms and Conditions, and the Seller a commission in accordance with the terms of the Seller's agreement.
- 4.14 Return of Lot**  
4.14.1 Once your bid has been accepted for a Lot then you are liable to pay for that Lot in accordance with these Terms and Conditions. If there are any problems with a Lot then you must notify us within 7 days of receipt of the Lot, specifying the nature of the problem. We may then request that the Lot is returned to us for inspection. Save as set out in clause 5.13, the cancellation of the sale of any Lot and the refund of the corresponding purchase price is entirely at our sole discretion. We will not normally exercise that discretion if the Lot is not received by us in the same condition that it was in at the auction date.
- 4.14.2 No lot may be returned on account of condition if the condition was stated by a third party grading company (including, but not limited to PCGS, NGC, ANACS, ICG, PMG, WBG, Legacy Currency Grading).
- 5 AFTER THE AUCTION**
- 5.1 Buyer's Premium and other charges**  
In addition to the Hammer Price, you must pay us the Buyer's Premium at a rate of 20% of the final Hammer price of each lot, postage charge and a fee for paying by card.
- 5.2 Value Added Tax**  
Other than in respect of Zero-rated Lots (o) VAT is chargeable on the Hammer price and the Buyer's premium of daggered (†) and (Ω) lots at the standard rate (currently 20%), and on lots marked (x) at the reduced rate (currently 5% on the Hammer price and 20% on the Buyer's premium). VAT on Margin scheme lots (identified by the absence of any VAT symbol next to the lot number) is payable at 20% on the Buyer's premium only.
- 5.3 VAT Refunds**  
**General**  
5.3.1 As we remain liable to account for VAT on all Lots unless they have been exported outside the EU within 3 months of the date of sale, you will generally be asked to deposit all amounts of VAT invoiced. However, if a Spink nominated shipper is instructed, then any refundable VAT will not be collected. In all other cases credits will be made when proof of export is provided. If you export the Lot yourself you must obtain shipping documents from the Shipping Department for which a charge of £50 will be made.  
5.3.2 If you export the Lot you must return the valid proof of export certificate to us within 3 months of the date of sale. If you fail to return the proof of export certificate to us within such period and you have not already accounted to us for the VAT, you will be liable to us for the full amount of the VAT due on such Lot and we shall be entitled to invoice you for this sum.  
5.3.3 To apply for a refund of any VAT paid, the proof of export certificate must be sent to our Shipping Department clearly marked 'VAT Refund' within 3 months of the date of sale. No payment will be made where the total amount of VAT refundable is less than £50 and Spink will charge £50 for each refund processed.  
**VAT Refunds - Buyers from within the EU**  
5.3.4 VAT refunds are available on the Hammer Price and Buyer's Premium of Daggered (†) and Investment Gold (g) Lots. You must certify that you are registered for VAT in another EU country and that the Lot is to be removed from the United Kingdom within 3 months of the date of sale.  
5.3.5 Where an EU buyer purchases a Lot on which import VAT has been charged, no refund of VAT is available from us. It may be possible to apply directly for a refund on form VAT 65 to HM Revenue & Customs Overseas Repayment Section, Londonderry.  
**VAT Refunds - Buyers from outside the EU**  
5.3.6 Where a Lot is included within the Auctioneers' Margin Scheme and evidence of export from the EU is produced within 3 months of the date of sale, the VAT on Buyer's Premium may be refunded.  
5.3.7 Where the Lot is marked as a Daggered (†) Lot the VAT charged on the Hammer Price may be refunded where evidence of export from the EU is produced within 3 months of the date of sale. A refund of VAT charged on the Buyer's Premium can also be made on receipt of proof of business as a collectibles dealer.  
5.3.8 Where the Lot is marked as an Omega (Ω) Lot or an Import VAT (x) Lot and evidence of export from the EU is produced within 3 months of the date of sale, the VAT charged on both the Hammer Price and Buyer's Premium may be refunded. Where required, we can advise you on how to export such Lots as a specific form of export evidence is required. Where we advise you on the export of the Lots, please be aware that the ultimate responsibility in respect of obtaining a valid proof of export certificate will lie with you and we will not be responsible for your failure to obtain such certificate.  
5.3.9 Lot marked as Investment Gold (g) is exempt from VAT on Hammer price. A refund of VAT charged on the Buyer's Premium can be made on receipt of proof of business as a collectibles dealer and where evidence of export from the EU is produced within 3 months of the date of sale.
- 5.4 Payment**  
5.4.1 You must provide us with your full name and permanent address and, if so requested, details of the bank from which any payments to us will be made. You must pay the full amount due (comprising the Hammer Price, the Buyer's Premium and any applicable VAT) within seven days after the date of the sale. This applies even if you wish to export the Lot and an export licence is (or may be) required.  
5.4.2 You will not acquire title to the Lot until all amounts due have been paid in full. This includes instances where special arrangements were made for release of Lot prior to full settlement.  
5.4.3 Payment should be made in sterling by one of the following methods:  
(i) Direct bank transfer to our account details of which are set out on the invoice. All bank charges shall be met by you. Please ensure that your client number is noted on the transfer.  
(ii) By cheque or bank draft made payable to Spink and Son Ltd and sent to Spink at 69 Southampton Row, Bloomsbury, London WC1B 4ET. Please note that the processing charges for payments made by cheques or bank drafts drawn on a non-U.K bank shall be met by you. Please ensure that the remittance slip printed at the bottom of the invoice is enclosed with your payment.

- (iii) By Visa or Mastercard. All Corporate cards regardless of origin and Consumer debit and credit cards issued outside the EU are subject to a fee of 2%. For all card payments there are limits to the amounts we will accept depending on the type of card being used and whether or not the cardholder is present.
- 5.4.4 Payments should be made by the registered buyer and not by third parties, unless it has been agreed at the time of registration that you are acting as an agent on behalf of a third party.
- 5.5 Invoices**  
Invoices may consist of one or more pages and will show: Zero rated Lots (o); no symbol Lots sold under the Auctioneers' Margin Scheme; Lots marked (g) special scheme Investment Gold; Daggered Lots (†), imported Lots marked (x) and (Ω), (c) Lots with Zero rated hammer for EU VAT registered buyers.
- 5.6 Collection of Purchases**  
5.6.1 Unless specifically agreed to the contrary, we shall retain lots purchased until all amounts due to us, or to the Spink Group, have been paid in full. Buyers will be required to pay for their lots when they wish to take possession of the same, which must be within 7 days of the date of the sale, unless prior arrangements have been made with Spink. Without prior agreement, lots will not be released until cleared funds are received with regard to payments made by cheque.  
5.6.2 Unless we notify you to the contrary, items retained by us will be covered in accordance with our policy which is available for inspection at our offices from the date of sale for a period of seven days or until the time of collection, whichever is sooner. After seven days or from the time of collection, whichever is the earlier, the Lot will be entirely at your risk.  
5.6.3 Our policy will not cover and we are unable to accept responsibility for damage caused by woodworm, changes in atmospheric conditions or acts of terrorism.
- 5.7 Notification**  
We are not able to notify successful bidders by telephone. While Invoices are sent out by email or mail after the auction we do not accept responsibility for notifying you of the result of your bid. You are requested to contact us by telephone or in person as soon as possible after the auction to obtain details of the outcome of your bids to avoid incurring charges for late payment.
- 5.8 Packing and handling**  
5.8.1 We shall use all reasonable endeavours to take care when handling and packing a purchased Lot but remind you that after seven days or from the time of collection, whichever is sooner, the Lot is entirely at your risk. Our postage charges are set out at the back of the catalogue.  
5.8.2 It is the responsibility of the Buyer to be aware of any Import Duties that may be incurred upon importation to the final destination. Spink will not accept return of any package in order to avoid these duties. The onus is also on the Buyer to be aware of any Customs import restrictions that prohibit the importation of certain collectibles. Spink will not accept return of the Lot(s) under these circumstances. Spink will not accept responsibility for Lot(s) seized or destroyed by Customs.  
5.8.3 If the Buyer requires delivery of the Lot to an address other than the invoice address this will be carried out at the discretion of Spink.
- 5.9 Recommended packers and shippers**  
If required our shipping department may arrange shipment as your agent. Although we may suggest carriers if specifically requested, our suggestions are made on the basis of our general experience of such parties in the past and we are not responsible to any person to whom we have made a recommendation for the acts or omissions of the third parties concerned.
- 5.10 Remedies for non-payment or failure to collect purchases**  
5.10.1 If you fail to make payment within seven days of your stipulated payment date set out in your invoice, we shall be entitled to exercise one or more of the following rights or remedies:  
5.10.1.1 to charge interest at the rate of 2% per month compound interest, calculated on a daily basis, from the date the full amount is due;  
5.10.1.2 to set off against any amounts which the Spink Group may owe you in any other transaction the outstanding amount remaining unpaid by you;  
5.10.1.3 we may keep hold of all or some of your Lots or other property in the possession of the Spink Group until you have paid all the amounts you owe us or the Spink Group, even if the unpaid amounts do not relate to those Lots or other property. Following fourteen days' notice to you of the amount outstanding and remaining unpaid, the Spink Group shall have the right to arrange the sale of such Lots or other property. We shall apply the proceeds in discharge of the amount outstanding to us or the Spink Group, and pay any balance to you;  
5.10.1.4 where several amounts are owed by you to the Spink Group in respect of different transactions, to apply any amount paid to discharge any amount owed in respect of any particular transaction, whether or not you so direct;  
5.10.1.5 to reject at any future auction any bids made by you or on your behalf or obtain a deposit from you before accepting any bids.  
5.10.2 If you fail to make payment within thirty-five days, we shall in addition be entitled to:  
5.10.2.1 to cancel the sale of the Lot or any other item sold to you at the same or any other auction;  
5.10.2.2 to arrange a resale of the Lot, publicly or privately, and, if this results in a lower price being obtained, claim the balance from you together with all reasonable costs including a 20% seller's commission, expenses, damages, legal fees, commissions and premiums of whatever kind associated with both sales or otherwise, incurred in connection with your failure to make payment;  
5.10.2.3 when reselling the Lot, place a notice in our catalogue stating that you successfully purchased the Lot at auction but have subsequently failed to pay the Hammer Price of the Lot; or  
5.10.2.4 take any other appropriate action as we deem fit.  
5.10.3 If you fail to collect within fourteen days after the sale, whether or not payment has been made, you will be required  
5.10.3.1 to pay a storage charge of £2 per item per day plus any additional handling cost that may apply.  
5.10.3.2 you will not be entitled to collect the Lot until all outstanding charges are met, together with payment of all other amounts due to us.
- 5.11 Use of Default Information**  
If you fail to make payment for a Lot in accordance with these Terms and Conditions:  
5.11.1 we reserve the right to refuse you the right to make bids for any future auction irrespective of whether previous defaults have been settled; and  
5.11.2 you acknowledge that we may (as necessary for our legitimate interests those of other auctioneers and live bidding platforms in referencing customers and avoiding customer defaults) disclose details of such default to other auctioneers and live bidding platforms, which will include your name, address, nature of the default and the date of the default.  
Auctioneers or live bidding platforms who receive details of the default may rely on such information when deciding whether to enter into a transaction with you in the future.
- 5.12 Export Licence**  
5.12.1 If required we can, at our discretion, advise you on the detailed provisions of the export licensing regulations. Where we advise you in relation to export licensing regulations the ultimate responsibility in respect of any export will lie with you and we will not be responsible for your failure to apply for any necessary licences.  
5.12.2 If the Lot is going to be hand carried by you, you may be required to produce a valid export licence to us or sign a waiver document stating that a licence will be applied for.  
5.12.3 You should always check whether an export licence is required before exporting. Export licences are usually obtained within two or three weeks but delays can occur.  
5.12.4 Unless otherwise agreed by us in writing, the fact that you wish to apply for an export licence does not affect your obligation to make payment within seven days nor our right to charge interest on late payment.  
5.12.5 If you request that we apply for an export licence on your behalf, we shall be entitled to recover from you our disbursements and out of pocket expenses in relation to such application, together with any relevant VAT.  
5.12.6 We will not be obliged to rescind a sale nor to refund any interest or other expenses incurred by you where payment is made by you despite the fact that an export licence is required.
- 5.13 Refund in the case of Forgery**  
5.13.1 A sale will be cancelled, and the amount paid refunded to you if a Lot (other than a miscellaneous item not described in the catalogue) sold by us proves to have been a Forgery. We shall not however be obliged to refund any amounts if either (a) the catalogue description or saleroom notice at the auction date corresponded to the generally accepted opinion of scholars or experts at that time, or fairly indicated that there was a conflict of opinions, or (b) it can be demonstrated that the Lot is a Forgery only by means of either a scientific process not generally accepted for use until after publication of the catalogue or a process which at the date of the auction was unreasonably expensive or impracticable or likely to have caused damage to the Lot. Furthermore, you should note that this refund can be obtained only if the following conditions are met:  
5.13.1.1 you must notify us in writing, within seven days of the receipt of the Lot(s), that in your view the Lot concerned is a Forgery;  
5.13.1.2 you must then return the item to us within fourteen days from receipt of the Lot(s), in the same condition as at the auction date; and  
5.13.1.3 as soon as possible following return of the Lot, you must produce evidence satisfactory to us that the Lot is a Forgery and that you are able to transfer good title to us, free from any third party claims.  
5.13.1.4 you must provide to us all evidence obtained by you that a Lot is a Forgery no later than 7 days after you receive such evidence.  
5.13.2 In no circumstances shall we be required to pay you any more than the amount paid by you for the Lot concerned and you shall have no claim for interest.  
5.13.3 The benefit of this guarantee is not capable of being transferred, and is solely for the benefit of the person to whom the original invoice was made out by us in respect of the Lot when sold and who, since the sale, has remained the owner of the Lot without disposing of any interest in it to any third party.  
5.13.4 We shall be entitled to rely on any scientific or other process to establish that the Lot is not a Forgery, whether or not such process was used or in use at the date of the auction.



## 6 LIABILITY

Nothing in these Terms and Conditions limits or excludes our liability for:

- 6.1 death or personal injury resulting from negligence; or
- 6.2 any damage or liability incurred by you as a result of our fraud or fraudulent misrepresentation.

## 7 USE OF YOUR PERSONAL INFORMATION

- 7.1 We will use the personal information you provide to us as set out in our privacy notice (available at <https://spink.com/privacy-policy>) and in particular to:

- 7.1.1 process the bids you make on Lots (whether successful or otherwise) and other auction related services we provide;
- 7.1.2 process your payment relating to a successful purchase of a Lot;
- 7.1.3 arrange for delivery of any Lot you purchase, which will include passing your details to shipping providers and, on overseas deliveries, to customs where they make enquiries regarding the Lot;
- 7.1.4 inform you about similar products or services that we provide, but you may stop receiving these at any time by contacting us.

- 7.2 In accordance with clause 4.2, we may pass your information to credit reference agencies in order to obtain credit checks from them, and they may keep a record of any search that they do.

- 7.3 In accordance with clause 5.11, where you default on making payment for a Lot in accordance with these terms and conditions we may disclose details of such default to other auctioneers and live bidding platforms.

- 7.4 We are also working closely with third parties (including, for example, other auctioneers and live bidding platforms) and may receive information about you from them.

- 7.5 Where you provide us with personal information about other individuals, you must ensure that your provision of that information is compliant with applicable data protection law.

## 8 COPYRIGHT

- 8.1 We shall have the right (on a non-exclusive basis) to photograph, video or otherwise produce an image of the Lot. All rights in such an image will belong to us, and we shall have the right to use it in whatever way we see fit.

- 8.2 The copyright in all images, illustrations and written material relating to a Lot is and shall remain at all times our property and we shall have the right to use it in whatever way we see fit. You shall not use or allow anyone else to use such images, illustrations or written material without our prior written consent.

## 9 VAT

You shall give us all relevant information about your VAT status and that of the Lot to ensure that the correct information is printed in the catalogues. Once printed, the information cannot be changed. If we incur any unforeseen cost or expense as a result of the information being incorrect, you will reimburse to us on demand the full amount incurred.

## 10 NOTICES

All notices given under these Terms and Conditions may be served personally, sent by 1st class post, or faxed to the address given to the sender by the other party. Any notice sent by post will be deemed to have been received on the second working day after posting or, if the addressee is overseas, on the fifth working day after posting. Any notice sent by fax or served personally will be deemed to be delivered on the first working day following despatch.

## 11 ADDITIONAL PROVISIONS

The following provisions of this clause 11 shall apply only if you are acting for the purposes of your business.

### 11.1 Limitation of Liability

Subject to clause 6, we shall not be liable, whether in tort (including for negligence) or breach of statutory duty, contract, misrepresentation or otherwise for any:

- 11.1.1 loss of profits, loss of business, depletion of goodwill and/or similar losses, loss of anticipated savings, loss of goods, loss of contract, loss of use, loss of corruption of data or information; or
- 11.1.2 any special, indirect, consequential or pure economic loss, costs, damages, charges or expenses.

### 11.2 Severability

If any part of these Terms and Condition is found by any court to be invalid, illegal or unenforceable, that part may be discounted and the rest of the conditions shall continue to be valid and enforceable to the fullest extent permitted by law.

### 11.3 Force majeure

We shall have no liability to you if we are prevented from, or delayed in performing, our obligations under these Terms and Conditions or from carrying on our business by acts, events, omissions or accidents beyond our reasonable control, including (without limitation) strikes, lock-outs or other industrial disputes (whether involving our workforce or the workforce of any other party), failure of a utility service or transport network, act of God, war, riot, civil commotion, malicious damage, compliance with any law or governmental order, rule, regulation or direction, accident, breakdown of plant or machinery, fire, flood, storm or default of suppliers or subcontractors.

## 11.4 Waiver

- 11.4.1 A waiver of any right under these Terms and Conditions is only effective if it is in writing and it applies only to the circumstances for which it is given. No failure or delay by a party in exercising any right or remedy under these Terms and Conditions or by law shall constitute a waiver of that (or any other) right or remedy, nor preclude or restrict its further exercise. No single or partial exercise of such right or remedy shall preclude or restrict the further exercise of that (or any other) right or remedy.

- 11.4.2 Unless specifically provided otherwise, rights arising under these Terms and Conditions are cumulative and do not exclude rights provided by law.

## 11.5 Law and Jurisdiction

- 11.5.1 These Terms and Conditions and any dispute or claim arising out of or in connection with them or their subject matter, shall be governed by, and construed in accordance with, the law of England and Wales.

- 11.5.2 The parties irrevocably agree that the courts of England and Wales shall have exclusive jurisdiction to settle any dispute or claim that arises out of, or in connection with, Terms and Conditions or their subject matter.

## Postal Charges

### Prices for all items including postage and packaging

Invoice Value	UK	EU	Rest of the World
Up to £1,500	£12	£18	£25
Up to £10,000	£20	£40	£50
Above £10,001	£30	£60	£75

Shipments of more than 2kg or volumetric measurement of more than 2kg have to be sent by courier. Certain countries may incur extra charge when courier services are required by our insurance policy. For lots sent by courier please contact [Auctionteam@spink.com](mailto:Auctionteam@spink.com) for calculation of any further relevant cost in addition to the above charges.

## Value Added Tax (VAT)

### Charging of (VAT) at Auction

The information shown on this page sets out the way in which Spink intends to account for VAT.

#### i. Auctioneers' Margin Scheme

1. Where possible, we will offer Lots for sale under the Auctioneers' Margin Scheme. Such Lots can be identified by the absence of any VAT symbol next to the Lot number in the catalogue and will not be subject to VAT on the Hammer Price.
2. Where Lots are sold using the Auctioneers' Margin Scheme to UK VAT-registered businesses, the VAT on Buyers' Premium is not recoverable as input tax. Upon request on sale day, we will issue invoices that show VAT separately on both the Hammer Price and the Buyer's Premium. This will enable VAT-registered businesses to recover the VAT charged as input tax, subject to the normal rules for recovering input tax.

#### ii. Zero-Rated Lots

Limited Categories of goods, such as books, are Zero-rated (o) for VAT in the United Kingdom. Such Lots are offered under the Auctioneers' Margin Scheme. In these circumstances no VAT will be added to the Buyer's premium.

#### iii. Dagged Lots

Lots which are Dagged (†) in the catalogue are subject to VAT at 20% on both the Hammer Price and the Buyer's Premium.

#### iv. Imported and Omega Lots

Lots which are marked (x) in the catalogue are subject to VAT at 5% on the Hammer price plus 20% on the Buyer's premium. Lots which bear the Omega symbol (Ω) are subject to VAT at 20% on the Hammer Price and on the Buyer's Premium. This VAT is payable on items imported from outside the EU. In these cases we have used a temporary importation procedure, which in effect means that the point of importation is deferred until the Lot has been sold. At this point the Buyer is treated as the importer and is liable to pay the import VAT due. We will collect the VAT from you and pay it to HM Customs and Excise on your behalf.

#### v. Investment Gold Lots

Lots marked (g) in the catalogue are exempt from VAT on the Hammer Price and are subject to VAT at 20% on the Buyer's Premium. A refund of VAT charged on the Buyer's Premium can also be made on receipt of proof of business as a collectibles dealer outside of the EU.

# SPINK

LONDON

1666

## SALE CALENDAR 2019/2020

### STAMPS

17 September	The 'Bartica' Collection of British Guiana Ship Type Issues	London	19039
17 September	The 'Lionheart' Collection of Great Britain and British Empire - Part X	London	19042
18 September	The Camping Collection of Great Britain	London	19043
26 September	The Iconic Inverted Jenny Unique Centerline Block of Four	New York	170
26 September	The Philatelic Collector's Series Sale	New York	171
22-23 October	The Philatelic Collectors' Series Sale	London	19045
2 November	The Treaty Ports of the Shanghai Postal System - Part III	Hong Kong	19056
2/3 November	The Philatelic Collectors' Series Sale	Hong Kong	CSS43
6-18 November	Stamps and Covers of France and French Colonies e-Auction	London	19046
13 November	The 'Rochambeau' Collection of France	London	19047
13-14 November	Dr. Edward Grabowski Postal History Collection of French Colonies	London	19048
13 November	The Freshwater Collection	New York	172
25 November - 9 December	The Woodside Booklets e-Auction	London	19057
5 December	The Woodside Booklets	London	19058
11 January	The Treaty Ports of the Shanghai Postal System - Part IV	Hong Kong	20018
11/12 January	Fine Stamps of China and Hong Kong	Hong Kong	CSS46
29 January	The 'Lionheart' Collection of Great Britain and British Empire - Part XI	London	20011
30/31 January	The Philatelic Collectors' Series Sale	London	20010

### COINS

19-30 September	World Gold and Silver Coins e-Auction	London	19060
24 September	British, Indian and Islamic Coins: Autumn Auction	London	19006
24 September	The Waterbird Collection of English Rarities	London	19040
18/21/22 August	The Numismatic Collectors' Series Sale	Hong Kong	CSS41
14-24 October	Estates & Collections e-Auction	New York	351
4-14 November	Coins and Commemorative Medals e-Auction	New York	353
4/5 January	Banknotes, Bonds & Shares and Coins of China and Hong Kong	Hong Kong	CSS45
19 January	The Numismatic Collector's Series at NY INC, Grand Hyatt	New York	355
20-30 January	Coins and Medals e-Auction	New York	356

### BANKNOTES

18/21/22 August	The Numismatic Collectors' Series Sale	Hong Kong	CSS41
10-20 September	US & World Banknotes e-Auction	New York	349
2 October	The Ibrahim Salem Collection of British Commonwealth - Part Two	London	19088
2/3 October	World Banknotes	London	19024
9/10 October	The Lou Manzi and A. J. Simms Collections of British Banknotes & other properties - Part II	London	19038
4/5 January	Banknotes, Bonds & Shares and Coins of China and Hong Kong	Hong Kong	CSS45
17 January	World Banknotes at NY INC, Grand Hyatt	New York	354
19 January	The Numismatic Collector's Series at NY INC, Grand Hyatt	New York	355

### MEDALS

27/28 November	Orders, Decorations and Medals	London	19003
4/5 January	Banknotes, Bonds & Shares and Coins of China and Hong Kong	Hong Kong	CSS45
19 January	The Numismatic Collector's Series at NY INC, Grand Hyatt	New York	355

### BONDS & SHARES

4-11 October	The Wenning Collection of US Stocks and Bonds e-Auction	New York	350
11-29 October	Bonds and Share Certificates of the World e-Auction	London	19019
4/5 January	Banknotes, Bonds & Shares and Coins of China and Hong Kong	Hong Kong	CSS45
19 January	The Numismatic Collector's Series at NY INC, Grand Hyatt	New York	355

### HISTORICAL DOCUMENTS

9 July	Historical Documents, Postal History and Autographs	London	19022
--------	-----------------------------------------------------	--------	-------

### LIFESTYLE COLLECTABLES

31 May	An Evening of Great Whiskies	Hong Kong	SFW31
October	Handbags and Accessories	Hong Kong	SHA03

The above sale dates are subject to change

Spink offers the following services:

- VALUATIONS FOR INSURANCE AND PROBATE FOR INDIVIDUAL ITEMS OR WHOLE COLLECTIONS –  
– SALES ON A COMMISSION BASIS EITHER OF INDIVIDUAL PIECES OR WHOLE COLLECTIONS –

اسم و آدرس فرستنده  
(تحت این عبارت)

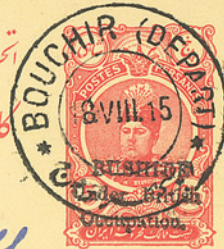
Nom et adresse de l'expéditeur.  
(Indication facultative.)

UNION POSTALE UNIVERSELLE

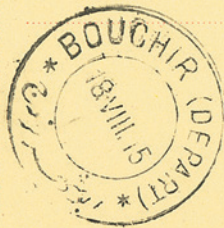
CARTE POSTALE DE PERSE

تبادل پستی عمومی

کارت پستال ایران



Monsieur Alex. Koroff  
Bouchir



دینگر فریت میوکوف

Ce côté est exclusivement réservé à l'adresse.

در این صفحه فقط باید عنوان و نشانی درج شود

San Herplane



Miss Carter

Oak wood

West Malvern

Worcestershire





# SPINK

WHERE HISTORY IS VALUED

FOUNDED  
1666

STAMPS COINS BANKNOTES MEDALS BONDS & SHARES AUTOGRAPHS BOOKS  
WINE & SPIRITS HANDBAGS COLLECTIONS ADVISORY SERVICES SPECIAL COMMISSIONS

69 Southampton Row, Bloomsbury, London WC1B 4ET  
[www.spink.com](http://www.spink.com)