
THE WILLIAMS COLLECTION

PART IV: ANGLO-SAXON AND NORMAN COINS



SPINK

29 JANUARY 2019
LONDON



456



458



459



465



466



469



474



475



482



492



THE WILLIAMS COLLECTION PART IV: ANGLO-SAXON AND NORMAN COINS

69 Southampton Row, Bloomsbury

London WC1B 4ET

tel +44 (0)20 7563 4000 fax +44 (0)20 7563 4066

Vat No: GB 791627108

Sale Details | Tuesday 29 January 2019 at 2.00 p.m.

In sending commission bids or making enquiries,
this sale should be referred to as **WILLIAMS PART IV - 19026**

Viewing of Lots | At Spink London
Friday 25 January 2019 at 10:00 a.m. – 5:00 p.m.
Monday 28 January 2019 at 10:00 a.m. – 5:00 p.m.
| Private viewing by appointment only

Live platform | **SPINK**  **LIVE**

Your Specialists for this Sale



Richard Bishop
rbishop@spink.com
+44 (0)20 7563 4053



Greg Edmund
gedmund@spink.com
+44 (0)20 7563 4048

Bids

Dora Szigeti
auctionteam@spink.com
+44 (0)20 7563 4005
fax +44 (0)20 7563 4037

Internet Bidding

Michael Lewis
support@spink.com
+44 (0)20 7563 4090
+44 (0)20 7563 4089

Payment Enquiries

Veronica Morris
creditcontrol@spink.com
+44 (0)20 7563 4018

VAT Enquiries

John Winchcombe
jwinchcombe@spink.com
+44 (0)20 7563 4101

The Spink Environment Commitment: Paper from Sustainable Forests and Clean Ink

Spink has a long history of preserving not only collectables but our planet, too. We are proud to ensure that our policy of sustainability and conservation keeps up with Spink's growth, helping improve the environment for new generations of collectors.

We insist that our printers source all paper used in the production of Spink catalogues from FSC and/or PEFC suppliers and use non-hazardous inks. We also ask they hold the environmental standard ISO 14001.

Spink recycle all ecological material used on our premises and we encourage you to recycle your catalogue once you have finished with it.

Front Cover Illustrations: 474, 603, 726 Back Cover Illustrations: 474, 478, 603, 703, 722, 726, 729

Inside Front Cover Illustrations: 456, 458, 459, 465, 466, 469, 474, 475, 482, 492 Inside Back Cover Illustrations: 493, 603, 634, 703, 705, 716, 722, 726, 728, 729

SPINK

Group Chairman And CEO

Olivier D. Stocker

Directors

Tim Hirsch FRPSL Anthony Spink

Chief Financial Officer

Alison Bennet

Head of EMEA

Mira Adusei-Poku
mpoku@spink.com

Global Head of Stamps and Autographs

Fernando Martínez
fmartinez@spink.com

Specialists

Stamps

Tim Hirsch FRPSL
David Parsons
Nick Startup
Neill Granger FRPSL
Dominic Savastano
Josh Barber
Thomas Fell
Ian Shapiro (Consultant)
George Eveleth
Guido Craveri (Consultant)
George Yue (Consultant)
Alan Ho

Bonds & Shares

Mike Veissid (Consultant)
Stephen Goldsmith (Special Consultant)
Peter Christen (Consultant)

Client & Auction Management

Geoff Anandappa
Dora Szigeti
Nik Von Uexkull
Alzbeta Lanova
John Winchcombe
Viola Craveri
Amit Ramprashad
Kaitlyn Argila
Newton Tsang
Christina Kong

PR & Marketing

Rita Ariete
Elma Li

Chief Customer Officer

Rita Ariete

Head of Americas

Charles J Blane
cblane@spink.com

Global Head of Coins and Medals

Muriel Eymery
meymery@spink.com

Coins

Richard Bishop
Tim Robson
Gregory Edmund
Lawrence Sinclair (Consultant)
Barbara Mears
Ellie Boot
Greg Cole
Stephen Goldsmith (Special Consultant)
Kin Choi Cheung
Paul Pei Po Chow
Joseph Lam

Historical Documents

Neill Granger FRPSL
Ian Shapiro (Consultant)
Greg Cole
Stephen Goldsmith (Special Consultant)

Books

Emma Howard
Kate Bulford
Nik Von Uexkull

Finance

Alison Bennet
Sue Pui
Marco Fiori
Mina Bhagat
Dennis Muriu
Veronica Morris
Nicholas Waring
Amit Ramprashad

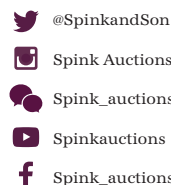
Representative For Australia

Peter Griffiths - pgriffiths@spink.com

Representative For Japan

日本での弊社オークションへの出品・参加に関してのお問い合わせ
Alan Ho - japan@spink.com

www.spink.com



Chief Operating Officer

Mira Adusei-Poku

Head of Asia-Pacific

Sue Pui
spui@spink.com

Global Head of Banknotes and Bonds

Kelvin Cheung
kcheung@spink.com

Banknotes

Barnaby Faull
Elaine Fung
Robert Wilde-Evans
Arnas Savickas
Greg Cole
Stephen Goldsmith (Special Consultant)
Paul Pei Po Chow

Orders, Decorations & Medals

Marcus Budgen
Iain Goodman
Jack West-Sherring
Greg Cole

Wine & Spirits

Angie Ihlo Fung

Special Commissions

Ian Copson
Edward Hilary Davis

IT & Administration

Berdia Qamarauli
Michael Lewis
Liz Cones
Slawomir Kolsut
Tom Robinson
Newton Tsang
Christina Kong

Spink UK

69 Southampton Row
Bloomsbury
London
WC1B 4ET
Email:
concierge@spink.com
Tel: +44 (0)20 7563 4000
Fax: +44 (0)20 7563 4066

Spink USA

145 W. 57th St.
18th Floor
New York, NY
10019
Email:
usa@spink.com
Tel: +1 646 941 8664
Fax: +1 646 941 8686

Spink China

4/F and 5/F
Hua Fu Commercial
Building
111 Queen's Road West
Sheung Wan
Hong Kong
Email:
china@spink.com
Tel: +852 3952 3000
Fax: +852 3952 3038

Spink Asia

Registered at:
50 Raffles Place
#17-01 Singapore Land
Tower
Singapore 048623
Email:
singapore@spink.com

Spink Switzerland

Via Livio 8
6830 Chiasso
Switzerland
Email:
switzerland@spink.com
Tel: +41 91 911 62 00
Fax: +41 91 922 20 52

INTRODUCING **SPINK** **LIVE**

**THE NEW AND IMPROVED
ONLINE BIDDING PLATFORM**

‘Spink Live’ is now running on a new and improved bidding platform.

Accessible online through www.spink.com and also as an App for mobiles and tablets.

Bidding on ‘Spink Live’ remains **free of charge.**

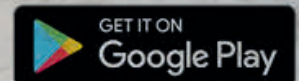
Online Platform

- 1** If not already registered, please create your “My Spink” account at www.spink.com. You will receive an email confirmation along with your Client ID. You will need this to log in.
- 2** Before the sale, log in to the www.spink.com, click on Spink Live to access the list of live sales, select the sale you are interested in and click on the “Click to bid on Spink Live” button. You can also access the live bidding platform via Auctions page.
- 3** Upon having been approved you can proceed to bidding live.
- 4** You can also place autobids and let the software bid on your behalf during the sale.
- 5** If you would like to just follow the sale click on “Click to view on Spink Live” button.
- 6** You will hear and see the auctioneer via the audio/video feed and feel the buzz in the auction

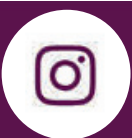
Mobile Platform

- 1** To bid via a mobile device or tablet, please download the Spink Live App from Apple’s App Store or Google’s Play store.
- 2** Log in with the same log in details as used on www.spink.com.
- 3** New clients can register and create a Spink account in the App. Please fill in your details and you will receive an email confirmation with your Client ID.
- 4** Log in and select the sale you are interested in.
- 5** Upon having been approved you can proceed to bidding live.
- 6** The bid button is activated by a slide motion to prevent accidental bidding.
- 7** You can also place autobids and let the software bid on your behalf during the sale.

Available now on iOS and Android.



**For any enquiries or further assistance please contact:
Tel: +44 (0) 20 7563 4112 | Email: auctionteam@spink.com**



SPINK

Order of Sale

TUESDAY 29 JANUARY 2019

Commencing at 2.00 p.m

Lots

ANGLO SAXON KINGDOMS

454-490

Kent, Cuthred	454-455
Archbishops of Canterbury	456-460
Mercia, Offa	461-468
Mercia, Coenwulf	469-479
Mercia, Burgred	480
East Anglia, Athelstan I	481-485
Wessex, Aethelwulf	486
Wessex, Alfred the Great	487-488
Wessex, Edward the Elder	489-490

KINGS OF ALL ENGLAND

491-500

Aethelstan	491-493
Eadmund	494
Eadred	495-497
Eadgar	498-500

KINGS OF ENGLAND

501-633

Aethelred II	501-602
Hiberno-Norse, Sihtric Anlafsson	
Imitation of Aethelred II Penny	603
Cnut	604-623
Harold I	624
Edward the Confessor	625-633

NORMAN KINGS OF ENGLAND

634-727

William I	634-648
William II	649-650
Henry I	651-666
Stephen	667-727
Substantive Royal Issues	677-715
Type 1, Cross Moline	677-689
Type 2, Cross and Mullets	690-695
Type 6, Cross and Piles	696-706
Type 7, Cross Pommée	707-715
Local and Irregular Issues	716-727

THE ANGEVIN PARTY

728-729

The Empress Matilda	728
Henry of Anjou	729

THE END OF THE SALE

TUESDAY 29 JANUARY 2019**Commencing at 2.00 p.m.**

All lots are subject to Terms and Conditions for Buyers printed at the back of this catalogue.
 Please note that 'Spink Live' is now running on a new and improved on-line bidding platform, which is accessible through www.spink.com and also as a SpinkLive app available for download from the App Store.
 You can continue bidding online free of charge.

Estimates

The estimated selling price of each lot is printed below the lot description and does not include the Buyer's Premium.
 Bidders should bear in mind that estimates are prepared well in advance of the sale and are not definitive.
 They are subject to revision.

ANGLO SAXON KINGDOMS**x454**

Kent, Cuthred (798-807), Penny, 1.28g, 3h, Canterbury, Saeberht, + CVDRED REX around beaded inner circle containing small cross pattée with pellets in angles, *rev.* + SEB/ERHT, s reversed, divided by bone-shaped device containing beaded bar (Naismith 19.1 this coin; N. -; S.876), *edge chipped between 6 and 7 o'clock, otherwise very fine, extremely rare, the only example listed by Naismith and only one other example known*

£1,200-1,500

PROVENANCE:

Time Line Originals, 8 January 2006
 Found at Torksey, Lincolnshire, 2005
 EMC 2005.0114

Saeberht produced similar coins with this reverse for Coenwulf



455

x455

Kent, Cuthred (798-807), Penny, 1.09g, 7h, Tribrach type, Canterbury, Duda, CUD/RED/REX in angles of beaded tribrach with beaded circle at centre containing a small tribrach with pellets in angles, *rev.* D/V/D/A in angles of long cross moline with annulet at centre containing pellet (Naismith C17.1b this coin; N.207; S.876), *chipped around two thirds of edge, good fine, rare*

£500-600

PROVENANCE:

Time Line Originals, April 2007
 Found near Snettisham, Norfolk
 EMC 2007.0137



x456

Archbishops of Canterbury, Aethelheard (793-805), with Offa as overlord, 792-796, Penny, 1.25g, 9h, •OFFA REXMEPT-, around plain cross in plain inner circle, *rev.* AEDLHARD PONT-, around cross pattée in plain inner circle (Chick 242b this coin; N.227/1; S.884), *surfaces slightly porous otherwise very fine, very rare*

£2,500-3,000

PROVENANCE:

Purchased from Spink, June 1995
Found near Louth, Lincolnshire, 1990
EMC 2000.0304



x457

Archbishops of Canterbury, Aethelheard (792-805) with Offa as overlord, 792-796, Penny, 1.30g, two line type with title Archiepiscopus, +OFFA between two lines, uncial M with contraction bar between ornaments above, trefoil and REX below, *rev.* AEDIL/HEARD/ARCEPI, trefoil before AEDIL, contraction marks above ARCEPI (cf. Chick 247, this coin not listed; CEB 136; N.229; S.885), *a field find, slightly creased, small edge split at 7 o'clock and small chip at 2 o'clock, otherwise very fine, extremely rare*

£1,500-2,000

PROVENANCE:

'A collection of Coins of the Canterbury Mint, the Property of a Gentleman, Spink auction 211, 13 December 2011, lot 6



458



458 (x2)

x458

Archbishops of Canterbury, Wulfred (805-832), Penny, 1.02g, 6h, anonymous group II, + VVLFREDI ARCHIEPISCOPI, tonsured and draped bust facing within solid inner circle, *rev.* + DOROVERNIAE CIPITATIS around inner circle containing alpha-omega monogram (Naismith C36.2b this coin; N.236; S.887), *edge slightly chipped between 9 and 12 o'clock but otherwise an attractive sharply struck coin, darkly toned, extremely fine, very rare*

£3,000-4,000

PROVENANCE:

Spink Numismatic Circular, March 1992, no. 858
Found in France c.1991



459



459 (x2)

x459

Archbishops of Canterbury, Ceolnoth (833-870), Penny, 1.21g, 6h, inscribed cross type (c.854-858), Leofing, + CEOLNOÐ - ARCHIEP, tonsured and draped bust facing, breaking beaded inner circle, three pellets on each shoulder, *rev.* + LIABIN - CG MO on limbs of cross, N-E-T-A in angles (cf. Naismith C157, this coin not listed; N.245; S.894), *edge chipped between 11 and 1 o'clock, otherwise good very fine, rare*

£2,000-3,000

PROVENANCE:

Purchased from M R Roberts, 20 May 1991



460

x460

Archbishops of Canterbury, Aethelred (870-889), Penny, a large fragment, 0.47g (approx. one third), of a cross and lozenge type, Ethelmund, + EDEL ... IEPI, top third of bust right, *rev.* + E...ND, top left and half of right quarter of lozenge (Blackburn & Keynes 16 this coin; N.251; S.896), *cracked, fine*

£150-200

PROVENANCE:

Purchased from J Bispham, January 1993

Found in Essex



461



461 (x2)



x461

Mercia, Offa (757-796), Penny, 1.24g, 7h, light coinage without portrait, c.779-792/3, Canterbury, Babba, + OF/FA/RE/X in angles of long cross crosslet, circle containing lozenge and pellet in centre, *rev.* B/A/BB/A, in angles of long cross crosslet, lozenge with rosette in centre (cf. Chick 90, this coin not listed but same dies as 90c; N.266; S.904), *very fine*

£1,200-1,500

PROVENANCE:

CNG auction, 5 October 1991, lot 380



462



462 (x2)



x462

Mercia, Offa (757-796), Penny, 1.13g, 6h, light coinage without portrait, c.779-792/3, Canterbury, Eoba, OF, lozenge O, contraction line above O and below F, in square of pellets with a line of pellets projecting diagonally from each corner, RXm below, crosses above and at sides, *rev.* E/O/B/A, lozenge O, in angles of cross fleury, circle with five pellets at centre (Chick 106e this coin; N.271; S.904), *very fine*

£1,000-1,200

PROVENANCE:

Downie's auction 277, 18 October 2001, lot 213

Spink Numismatic Circular, November 1980, no. 9222



x463

Mercia, Offa (757-796), Penny, 1.19g, 12h, light coinage without portrait, c.779-792/3, Canterbury, Eoba, O/F/F/A, four pellets in O, around a square of pellets with cross at each corner, reversed R in centre, *rev.* E/O/B/A in angles of cross fleury, circle with five pellets at centre (Chick 111b this coin; N.273; S.904), *slight rim chip at 6 o'clock, almost very fine, very rare*

£800-1,000

PROVENANCE:

Spink auction 175, 28-29 September 2005, lot 1302
 Spink Numismatic Circular, December 1993, no. 8411
 Found at Farnborough, Bromley, 1991
 EMC 1993.1001



464

x464

Mercia, Offa (757-796), Penny, 1.06g, light coinage without portrait, c.779-792/3, London, Winoth, OFFA REX in two lines divided by a beaded line with forked ends, *rev.* uu - IN - Od, lozenge O, in angles of lozenge cross fleury, cross over saltire of petals in centre (cf. Chick 76, this coin not listed; N.288; S.904), *edge loss between 3 and 9 o'clock, fine*

£500-600

PROVENANCE:

Time Line Originals, 20 April 2007
 Found at Grimsby, 2007



x465

Mercia, Offa (757-796), Penny, 1.18g, 12h, light coinage with portrait, c.779-792/3, London, Ealhmund (or Alhmund), +EALHMUND, bare headed bust right, breaking beaded inner circle, a 'jewel' on the king's breast, *rev.* +/O/F/F/A/R/E/X in angles of combined cross of lobes and long cross saltire (Chick 35b this coin; N.299; S.905), *good fine, extremely rare*

£1,500-2,000

PROVENANCE:

Noble Numismatics, auction 61, 4 August 1999, lot 1925
 Spink Numismatic Circular, July 1988, no. 4629 'about VF, a recent find'



466

466 (x2)

x466

Mercia, Offa (757-796), Penny, 1.10g, 12h, light coinage with portrait, c.779-792/3, London, Winoth, .•.+ OFFA REX +.•., small diademed bust with heart shaped truncation, breaking beaded inner circle, *rev.* U/IN/O/d, in angles of a lozenge cross fleury with double fleurs, a plain saltire in centre (Chick 72d this coin; Chick, *Yorkshire Numismatist* 1997, pl. I, no. 2 this coin; N.302; S.905), *bust a little flat, otherwise good fine*

£1,500-2,000

PROVENANCE:

Spink Numismatic Circular, February 1992, no. 133

Found at Hadleigh Downs, Essex, October 1991

EMC 1996.0169



467

467 (x2)

x467

Mercia, Offa (757-796), Penny, 1.12g, 5h, light coinage with portrait, c.779-792/3, London, Ealmund, + OFFA REX +, lozenge O, legends starts at 9 o'clock, draped bust right, breaking beaded inner circle, *rev.* + E - AL - MV - Nd, in angles of large lozenge cross with incurved sides, cross botonée at centre (Chick 48c this coin; N.307; S.905), *centres flat, good fine*

£800-1,000

PROVENANCE:

Spink Numismatic Circular, February 1992, no.132

Sotheby, 4 October 1990, lot 396

Sotheby, 13 February 1986, lot 18

Bonhams, 4 December 1980, lot 703



468

468 (x2)

x468

Mercia, Offa (757-796), Penny, 1.29g, 6h, heavy coinage without portrait, c.792-796, South Eastern (Canterbury?) mint, Ethelnoth, + OFFA between two lines of pellets, uncial m between pellets above, REX below, *rev.* EFIEL NOFI, in two lunettes divided by a line of pellets (Chick 232b this coin; CEB.97 same dies; N.321; S.908), *edge loss between 12 and 3 o'clock, otherwise nearly very fine*

£800-1,000

PROVENANCE:

Lawrence Stack, Sotheby, 22-23 April 1999, lot 294

Glendining, 5 October 1987, lot 397

Found near Kettering, Northamptonshire, c.1935



x469

Mercia, Coenwulf (796-821), Penny, 1.35g, 12h, three line type, c.796-797, London, Winoth, CENVVLF, retrograde N, uncial m above, R:E:X below, divided by broken beaded bars with central hooks, *rev.* VV/IN/O/t, lozenge O, legend begins at 9 o'clock, within angles of beaded long cross, three arms terminating in an uncial m, the lower arm with two parallel lines terminating in hooks (cf. Naismith 7a same obverse die, same reverse type but moneyer's name not retrograde; N.-; cf. S.912A), *patchy tone, slightly wavy flan with a little edge loss, good very fine, the second known example of this Offa-Coenwulf type, and unique with the moneyer's name reading clockwise on the reverse*

£2,000-2,500

PROVENANCE:

Spink auction 225, 22-23 September 2014, lot 88
Found near Bedford, Bedfordshire, April 2014
EMC 2014.0119



x470

Mercia, Coenwulf (796-821), Penny, 1.38g, 6h, tribach type, c.797-805, Canterbury, Aethelmod, + COENVVLF REX around solid inner circle containing uncial m, *rev.* EP/ELM/OD in angles of two-lined tribach moline with annulets in inner angles (cf. Naismith C11.3 reverse letters distributed differently; N.342; S.914), *surface crack on obverse from centre nearly to edge between CO otherwise good very fine*

£800-1,000

PROVENANCE:

Time Line auction, 21 September 2015, lot 2777
Found near Easton, Cambridgeshire, 2014
EMC 2015.0154

x471

Mercia, Coenwulf (796-821), Penny, 1.28g, 11h, tribach type, c.797-805, Canterbury, Duda, + COENVVL•F REX, legend begins at 12 o'clock, around beaded inner circle containing uncial m, *rev.* D/VD/A, within angles of a two-lined tribach moline, each arm with a pellet within the termination, pellet at centre and within angles (Naismith C13.2j this coin; N.342; S.914), *slightly porous, full flan, good very fine, rare*

£1,200-1,500

PROVENANCE:

A W Lyons, Spink auction 219, 24-25 September 2013, lot 70
Purchased from Baldwin, 2002



x472

Mercia, Coenwulf (796-821), Penny, 1.23g, 3h, tribach type, c.797-805, Canterbury, Duda, + •C•O•ENVVL•F• R•EX, legend begins at 12 o'clock, around beaded inner circle containing uncial m, *rev.* D/VD/A within angles of a two-lined tribach moline, each arm with a pellet within the termination and pellets within two of the angles (Naismith C.13.2k this coin; N.342; S.914), *edge loss between 7-8 o'clock and 11-12 o'clock, otherwise extremely fine*

£1,200-1,500

PROVENANCE:

Numismatica Genevensis auction 5, 2-3 December 2008, lot 585



x473

Mercia, Coenwulf (796-821), Penny, 1.37g, 9h, portrait type, c.810-821, Rochester, Ealhstan, +COENV - VLF REX, diademed and draped bust right, breaking solid inner circle, *rev.* EALHZTAN MONTA around plain inner circle containing cross moline with pellet in each angle (Naismith R2.2d this coin; N.348; S.917), *slightly wavy flan, rough surfaces, good fine*

£600-800

PROVENANCE:

DNW, 13 December 2006, lot 43

Found near Duxford, Cambridgeshire, 2005

EMC.2005.0197



x474

Mercia, Coenwulf (796-821), Penny, 1.36g, h, large portrait type, c.810-822/23, Canterbury, Oba, + COENVVLF - REX m, diademed and draped bust right, breaking breaking inner circle, *rev.* + OBA + MON + ETA, around plain inner circle containing cross pomée with wedges in angles (Naismith C41.5i this coin; N.355; S.916), *a pleasing very fine*

£1,200-1,500

PROVENANCE:

Spink Numismatic Circular, April 1999, no. 1326



x475

Mercia, Coenwulf (796-821), Penny, 1.31g, 12h, large portrait type, c.800-821, East Anglian mint (Ipswich?), Wighere, + COENVVLF REX m, diademed and draped bust right, breaking solid inner circle, *rev.* + VVGHERM, pellets (usually three) between each letter, around plain inner circle containing cross moline with pellets in angles (cf. Naismith E11 - this coin not listed, only one example listed, SCBI 2 (Glasgow) 348, from different dies; N.-; S.920), *tiny chip on edge between 4 and 5 o'clock, very fine, extremely rare*

£1,200-1,500

PROVENANCE:

Purchased from Baldwin, 1 October 1996



476



476 (x2)

x476

Mercia, Coenwulf (796-821), Penny, 1.24g, 9h, large portrait type, c.800-821, East Anglian mint (Ipswich?), Wihtred, + COEHVVLF REX m, lozenge shaped O, the R a sideways s shape, simplistic diademed head right, the faint truncation breaking the solid inner circle but with no attempt at a bust, *rev.* + PIHTCED, the H elongated, around beaded inner circle containing cross with pellets in angles (Naismith E12.1c this coin; N.367; S.920), *good very fine*

£1,200-1,500

A coin of considerable charm. The large staring eye is in reality a central circle with a pellet in the centre, around which the head is sketched, while the lower part of the face fades with impressionistic realism. The letters are also very individual, in particular the very elongated h. The moneyer Wihtred clearly was not too concerned about his letter R. On the obverse he has curved the letter so much it has become a backward S on its side, while on the reverse he seems to have simply used a clear rounded C.

PROVENANCE:

Mike Vosper list 119, September 2001, no. 211



477

x477

Mercia, Coenwulf (796-821), Penny, 1.047g, 11h, large portrait type, c.800-821, East Anglian mint (Ipswich?), Wodel, + COENVVLF - REX m, lozenge shaped O, diademed and draped bust right, breaking beaded inner circle, *rev.* PO/d/E/L+. lozenge shaped O, d inverted, in angles of beaded cross with annulets in circles at centre and at each point (Naismith E13.1g this coin; N.359; S.920), *cracked and repaired, otherwise very fine, very rare*

£500-600

PROVENANCE:

Spink Numismatic Circular, December 1992, no. 7429
 Spink Numismatic Circular, September 1991, no. 5501
 Ryan, Glendining, 22 January 1952, lot 631
 Drabble, Glendining, 4-6 July 1939, lot 330
 Carlyon-Britton, private sale
 Rashleigh, Sotheby, 21 June - 1 July 1909, lot 46



478



478 (x2)

x478

Mercia, Ceolwulf I (821-823), Penny, 1.13g, 9h, portrait type, c.810-821, East Anglian mint (Ipswich?), Hereberht, + CEOLVVLF - REX m, diademed and draped bust right, the bust represented by four straight lines breaking the solid inner circle, *rev.* HER/EBE +/RHT, in three lines, divided by lines with crook at each end, the letters HER inverted (Naismith E17i this coin; N.392; S.927), *edge chipped between 3 and 6 o'clock, fine, the portrait very clear, very rare*

£1,000-1,500

PROVENANCE:

Spink auction 175, 28-29 September 2005, lot 1307
 Spink Numismatic Circular, April 1991, no. 1789
 Spink Numismatic Circular, October 1989, no. 5343
 Grantly, Glendining, 22 March 1944, lot 858
 Murdoch, Sotheby, 31 March 1903, lot 29
 Montagu, Sotheby, 18-23 November 1895, lot 262
 Marsham-Townshend, Sotheby, 19 November 1888, lot 81



479



480

x479

Mercia, Beornwulf (823-825), Penny, 1.25g, 6h, East Anglian mint, Eadgar, ERONVVLFR., legend starts at 7 o'clock, around diademed and draped bust right, breaking solid inner circle, small cross on breast, *rev.* + EAD + RAR, around beaded circle containing small cross pommée (Naismith E22.2a this coin; N.-; S.-), *edge chipped below bust, crack along left side of bust (daylight) and other splits, fine, the only specimen recorded by Naismith*

£800-1,000

PROVENANCE:

Baldwin auction 9, 8 October 1996, lot 1781

Found at Portesham, Dorset, autumn 1995

EMC 1995.0136

x480

Mercia, Burgred (852-874), Penny, 1.23g, type A, Heawulf, BVRGRED RE+-m, legend begins at 7 o'clock, diademed and draped bust right, breaking solid inner circle, *rev.* HEAVVL across centre, F MON and ETA.: in lunettes above and below (N.423), *minor edge loss at 2 o'clock, very fine*

£200-300

PROVENANCE:

Purchased from M Roberts, May 1991



481



481 (x2)

x481

East Anglia, Aethelstan I (c.825-845), Penny, 1.20g, non portrait type, + EDELSTAN, around Alpha within beaded inner circle, *rev.* + REX ANG., around Omega within beaded inner circle (Naismith E32.1m this coin; N.439; S.950), *chip between 2 and 3 o'clock, good very fine, very rare*

£1,200-1,500

PROVENANCE:

Purchased from Baldwin, May 1995

Glendining, 13 March 1974, lot 68

Drabble, Glendining, 4-6 July 1939, lot 357



482



482 (x2)

x482

East Anglia, Aethelstan I (c.825-845), Penny, 1.22g, 4h, non portrait type, Eadgar, + EDLSTAN REX, legend begins at 9 o'clock and reads outwardly, around beaded inner circle containing cross on omega, *rev.* + EADGAI MON, legend reads outwardly, around beaded inner circle containing cross with pellets in angles (Naismith E34a this coin; N.-; S.-), *slightly wavy flan, good very fine*

£1,000-1,200

PROVENANCE:

Time Line Originals, 20 May 2006
Found at Newark, Nottinghamshire, December 2005
EMC 2005.0287
Coin Register 2006, 183



483



483 (x2)

x483

East Anglia, Aethelstan I (c.825-845), Penny, 1.32g, non portrait type, 'Rerhelem' (Regenhere), + EPEIVNTR, legend begins at 6 o'clock, around large letter A, no inner circle, *rev.* + RERHEFEM, around solid inner circle containing cross pattée (Naismith -, but same obverse as E39.2; N.-; S.950), *edge slightly turned up at 3 o'clock, otherwise extremely fine, extremely rare, an unrecorded variety*

£1,200-1,500

PROVENANCE:

Purchased from Baldwin, May 1995

Naismith notes that the fifth letter of the obverse 'should probably be interpreted as either a runic z or as a degraded angular s.'



484

x484

East Anglia, Aethelstan I (c.825-845), Penny, 1.308g, 12h, non portrait type, Torhthelm, + EDELSTANI around large A, no inner circle, *rev.* TORHTHELM., around cross moline within beaded inner circle (Naismith E40.4f this coin; N.442; S.950), *edge chipped between 9 and 11 o'clock, otherwise very fine*

£500-600

PROVENANCE:

Spink Australia, 'Racecourse Sale', 3 December 1992

Spink Numismatic Circular, April 1989, no. 1761



485

485 (x2)

x485

East Anglia, Aethelstan I (c.825-845), Penny, 1.28g, non portrait type, Aethelhelm, AETHELSTAN REX, the L up side down and the T a cross, around beaded circle containing cross with pellets in angles, *rev.* AETHELSTAN REX, around beaded circle containing cross with pellets in angles (Naismith -; N.-; S.951), *very fine, very rare*

£800-1,000

PROVENANCE:

Purchased from M Vosper, June 2001



486

487

x486

Wessex, Aethelwulf (839-858), Penny, 1.22g, 9h, phase 3 (DORB/CANT) c. 849-854, Canterbury, Ealhmund, + EDELVVLF REX, legend begins at 6 o'clock, around DORB within circle, *rev.* + EALGMVNP MONETA, the NE ligate, around CANT within circle (cf. Naismith C125, this coin not listed but same obverse die as C125a; N.614; S.1049), *good fine*

£800-1,000

PROVENANCE:

Purchased from Baldwin, November 1991

Naismith notes an untraced specimen of this type in the Baldwin collection in 1958 (information from Hugh Pagan).

x487

Wessex, Alfred (871-899), Penny, 1.30g, 12h, Two Line ('Guthrum') type, Mercian mint, Ludig, +EL-FR-ED-RE, around solid inner circle containing small cross pattée, a pellet in fourth quarter, *rev.* LVDIG HON in two lines divided by central pellet (N.637; S.1066), *a series of small straight marks (as peck marks? but in relief) across centre of reverse, otherwise good fine*

£600-800

PROVENANCE:

Noble Numismatics auction 50, 21 March 1996, lot 2528

Spink Australia auction 19, lot 1854



488

x488

Wessex, Alfred (871-899), Halfpenny, 0.69g, Portrait/London Monogram type, London, AELFR - ED RE, diademed and draped bust right, no inner circle, *rev.* London monogram, pellets above and below (N.645; S.1063), *centres flat, fine*

£800-1,000

PROVENANCE:

Sotheby, 22 March 1990, lot 373, 'said to have been found in Hampshire'



489

x489

Wessex, Edward the Elder (899-924), Penny, 1.40g, Two Line type, Bonos Homo, + EADVARD REX around small cross in solid inner circle, *rev.* BONVS HOMO M^o in two line divided by three small crosses with pellets between, trefoil of pellets above and below (N.649; S.1087), *slight surface roughness, otherwise good fine*

£250-300

PROVENANCE:

Purchased from J Bispham, January 1996

Found at Long Melford, Suffolk, 1993-94

The obverse die, with the flaw from the E of REX, is distinctive. Two examples are in the Morley St Peter hoard, see SCBI 26 (East Anglia), with reverses by Bonus Homo, no.136, and by Hesdebert, no.146.



490

x490

Wessex, Edward the Elder (899-924), Penny, 1.22g, Two Line type, Southern style, Heremfred, + EADWEARD RX, around small cross in solid inner circle, *rev.* HEIEIIF - REDII^o in two lines divided by three crosses, no symbol above or below (N.649; S.1087), *traces of undertype visible, good very fine*

£300-400

PROVENANCE:

Colonial Rare Coins, 21 November 1994, lot 130

KINGS OF ALL ENGLAND



491

x491

Aethelstan (924/5-939), Penny, 1.579g, Two Line type, Southern group, Garulf, + ÆDELSTAN REX, around small cross pattée in solid inner circle, *rev.* GARV LFM O in two lines divided by three small crosses, trefoils of pellets above and below (Blunt 50 (Earnulf); SCBI 20 (Mack) 773 same dies; N.668; S.1089), *fine, very rare*

£250-300

PROVENANCE:

Spink Australia, auction 27, 2 March 1989, lot 1243
Norweb, part 1, Spink auction 45, 13 June 1985, lot 54
Glendining, 13 March 1974, lot 85
Carlyon-Britton collection



492



492 (x2)

x492

Aethelstan (924/5-939), Penny, 1.46g, Crowned Bust type, London, Aelfwald, + ÆDELSTAN REX, crowned and draped bust right, breaking solid inner circle, *rev.* +ÆLFPALD M O LOND CIVI, around small cross in solid inner circle (Blunt 269; SCBI 2 (Glasgow) 611 same reverse die, and SCBI 34 (British Museum) 127; N.675; S.1095), *good fine*

£1,000-1,200

PROVENANCE:

Purchased from M R Roberts



493



493 (x2)

x493

Aethelstan (924/5-939), Penny, 1.608g, Crowned Bust type, Winchester, Otic, + ÆDELSTAN REX, the NR ligate, crowned and draped bust right, breaking solid inner circle, *rev.* + OTIC MONETA VVIN CI, small cross pattée, with additional small cross above, in solid inner circle (Blunt 302 and pl. xiii this coin; SCBI 30 (American collections) 340 this coin; N.675; S.1095), *very fine, rare*

£1,500-2,000

PROVENANCE:

Noble Numismatics auction 50, 20 March 1996, lot 2531
Norweb, part 1, Spink auction 45, 13 June 1985, lot 58
Purchased from Seaby July 1971
SCMB, March 1971, H681
Drabble, Glendining, 13 December 1943, lot 850
Bruun, Sotheby, 18 May 1925, lot 89
Murdoch, part I, Sotheby, 31 March 1903, lot 111 (part)
Montagu, part I, Sotheby, 18 November 1895, lot 629



494

x494

Eadmund (939-946), Penny, 1.36g, Two Line type, North East style, York moneyer Ingelgar, + EADMVND REX EC, around small cross in solid inner circle, *rev.* INGEL GAR M, in two lines divided by three crosses, three pellets above and below (SCBI 30 (Glasgow) 641 same dies; CTCE p.117-118; N.688; S.1105), *edge weak at the four cardinal points, good fine*

£300-400

PROVENANCE:

Purchased from Colonial Rare Coins, November 1992



495



496

x495

Eadred (946-955), Penny, 1.48g, Two Line type, North East style, York moneyer Ingelgar, +EADRED REX I around small cross in solid inner circle, *rev.* INGEL GARM^o in two lines divided by three small crosses, trefoils of pellets above and below (SCBI 34 (British Museum) 555 but different dies; CTCE p.132 and no.100; N.706 and note; S.1113), *good very fine*

£400-600

PROVENANCE:

Purchased from M R Roberts, May 1991

'For the greater part of Eadred's reign Northumbria, but not the Five Boroughs, was under the control of the Vikings. They recovered it the year after his accession and held it until 952, with probably a slight intermission in 946/7. Consequently the York coinage in Eadred's name is not on an extensive scale. Ingelgar is again a moneyer for the English king but it seems possible that his work for the Vikings resulted in his dismissal from office soon after Eadred recovered York. If so, most of his coins are likely to date from the earlier part of Eadred's reign.' (SCBI 34, p.xxi)

x496

Eadred (946-955), Penny, 1.43g, Two Line type, North East style, Hunred, + EADRED REXD, around small cross in solid inner circle, *rev.* HVN RED^o in two lines divided by three crosses, trefoils of pellets above and below (N.706; S.1113), *very fine*

£300-400

PROVENANCE:

Colonial Rare Coins, 21 November 1994, lot 132

For other examples by this moneyer with the mint letter D after REX see SCBI 34 (British Museum) 568 and 569. This coin is of the scarcer variety with just the moneyer's name on the reverse (without M or M^o). For similar reverses but from different dies see SCBI 34 no. 564, and also SCBI 6 (Edinburgh) 227 and SCBI 64 (Chester) 227. 'An important moneyer is Hunred the volume of whose coinage for Eadred is considerable and bears a variety of 'privy marks'. This large coinage, if it emanated from York, which a die-link with Ingelgar might suggest, may do no more than reflect positive steps taken in the short time between Eadred's recovery of York and his death to eliminate the Norse currency. But such an explanation is not entirely satisfactory because most of the latest Norse coins were of good weight and metal. Hunred was a minor moneyer after Eadred's reign, and we think that the bulk of his coining took place at a substitute mint while York was in Norse hands.' (CTCE p. 132)



497



498

x497

Eadred (946-955), Penny, 1.25g, Two Line type, North West style, Grimes, EADRED REX around small cross in solid inner circle, *rev.* GRIM ESMOT in two lines divided by three small crosses, rosettes above and below (N.707; S.1113), *edge loss between 8 and 10 o'clock and some verdigris, otherwise extremely fine*

£500-600

PROVENANCE:

Purchased from Baldwin, November 1991

x498

Eadgar (959-975), Penny, 1.25g, Two Line type, North East variant, Ive, + EADGER RE, pellet and crescent at end of legend, around small cross in solid inner circle, *rev.* IVEM ONE'N in two lines divided by three small crosses, trefoil of pellets above and below (N.741 and footnote; S.1129), *very fine*

£300-400

PROVENANCE:

Purchased from M R Roberts, May 1991



499



500

x499

Eadgar (959-975), Penny, 1.37g, Two Line type, North East style, Thor (Thurmod?), + EADGAR REX around small cross in solid inner circle, *rev.* ÐVR MON in two lines divided by three small crosses, trefoils of pellets above and below (N.741 but Thurmod not listed here but only under 745 - see next lot; S.1129), *very fine*

£200-250

PROVENANCE:

Purchased from Colonial Rare Coins, May 1990

x500

Eadgar (959-975), Penny, 1.16g, Two Line type, North West style, Thurmod, EADGAREX around small cross in solid inner circle, *rev.* ÐVR MODM in two lines divided by small cross between two annulets, rosette of pellets above and below (CTCE 152; N.745; S.1130), *edge chipped, otherwise good very fine*

£300-400

PROVENANCE:

Noble Numismatics sale 50, 21 March 1996, lot 2537

KINGS OF ENGLAND



501



502



503



504



x501

Aethelred II (978-1016), Penny, 1.59g, First Hand type, Canterbury, Boia, + ÆDELRED REX ANGLORX, the ORX ligate, diademed and draped bust right, in solid inner circle, *rev.* BOIA M^o CÆNTPAR, hand dividing alpha and omega (N.766; S.1144), *double struck, very fine, cleaned*

£200-250

PROVENANCE:

Purchased from Colonial Rare Coins, August 1992

x502

Aethelred II (978-1016), Penny, 1.67g, First Hand type, Huntingdon, Aelfric, + ÆDELRED REX ANGLORX, diademed and draped bust right, *rev.* ÆLFRIC M^o HVNTAN, hand dividing alpha and omega (N.766; S.1144), *good very fine*

£300-400

PROVENANCE:

William J Conte collection Triton VI, 13 January 2003, lot 1322

Purchased from R Gillio, 1994

x503

Aethelred II (978-1016), Penny, 1.47g, First Hand type, Lincoln, Grind, + ÆDELRED REX ANG, the ANG ligate, diademed and draped bust right, in solid inner circle, *rev.* GRIND M^o LINDCOL, hand dividing alpha and omega (N.766; S.1144), *very fine*

£300-400

PROVENANCE:

Dolphin Coins list, August 1993, no.5059

x504

Aethelred II (978-1016), Penny, 1.54g, First Hand type, London, Godric, + ÆDELRED REX ANGLORX, the ORX ligate, diademed and draped bust right, in solid inner circle, *rev.* GODRIC M^o LVND•, hand dividing alpha and omega (SCBI 2 (Glasgow) 796 same dies (recut?); N.766; S.1144), *from worn (recut?) dies, very fine*

£150-200

PROVENANCE:

Purchased from M R Roberts, May 1991



505



506



507

x505

Aethelred II (978-1016), Penny, 1.55g, First Hand type, London, Sibwine, + ÆDELRED REX ANGLORX, the ORX ligate, diademed and draped bust right, in solid inner circle, *rev.* ZIBPINE M^o LVNDONI, hand dividing alpha and omega (N.766; S.1144), *very fine*

£150-200

PROVENANCE:

Sotheby, 22 March 1990, lot 374

For the same rendering of the moneyer's name and the mint (but different dies) see SCBI 26 (East Anglia) 1139

x506

Aethelred II (978-1016), Penny, 1.59g, First Hand type, Norwich, Lifinc, + ÆDELRED REX ANGLORX, the ORX ligate, diademed and draped bust right, in solid inner circle, *rev.* LIVINC MONETA NORÐPIC, the NC ligate, hand dividing alpha and omega (N.766; S.1144), *very fine*

£200-250

PROVENANCE:

Dolphin Coins list, August 1993, no.5061

From the York hoard, 1992

x507

Aethelred II (978-1016), Penny, 1.44g, First Hand type, York, Colgrim, + ÆDELRED REX ANGLORX, the ORX ligate, diademed and draped bust right, in solid inner circle, *rev.* COLGRIM M^o EOFE, hand dividing alpha and omega (N.766; S.1144), *very fine*

£150-200

PROVENANCE:

Purchased from Colonial Rare Coins, August 1992

From the York hoard 1992



508



509



510

x508

Aethelred II (978-1016), Penny, 1.15g, First Hand type (BEH B1), a contemporary forgery with blundered legends and omega inverted on reverse, (as N.766 and S.1144), *struck, coarse style, very fine, rare as a forgery, doubtless English, no imitations of this (early) type in Copenhagen (see Sylloge 1451-1699)*

£250-300

PROVENANCE:

'Viking' collection, Spink auction 150, 14 March 2001, lot 1010

x509

Aethelred II (978-1016), Penny, 1.06g, Second Hand type, Exeter, Byhrisge, ÆDELRED REX ANGLO, diademed and draped bust right, *rev.* BYRHSIGE M^o EAX, hand dividing alpha and omega (N.768; S.1146), *flan cracks, otherwise good fine*

£150-200

PROVENANCE:

Purchased from M R Roberts, May 1991

x510

Aethelred II (978-1016), Penny, 1.44g, Crux type, Canterbury, Eadwold, + ÆDELRED REX ANGLORX, the NG and the ORX ligate, bare headed and draped bust left, sceptre in front, *rev.* EADPOLD M^o CÆNT, short voided cross with CRVX in angles (N.770; S.1148), *some surface cracks, very fine*

£150-200

PROVENANCE:

Purchased from Colonial Rare Coins, June 1991



x511

Aethelred II (978-1016), Penny, 1.38g, Crux type, Canterbury, Leofstan, + ÆDEL RÆD REX ANGLO, the NG ligate, bare headed and draped bust left, sceptre in front, *rev.* + LEOFSTAN M^o CÆNT, short voided cross with CRVX in angles (N.770; S.1148), *peck marks on obverse, about very fine*

£200-250

PROVENANCE:

Lawrence Stack, Sotheby, 22-23 April 1999, lot 511

x512

Aethelred II (978-1016), Penny, 1.21g, Crux type, London, Aelfric, + ÆDEL RÆD REX ANGLORX, the AN and the ORX ligate, bare headed and draped bust left, sceptre in front, *rev.* ÆLFRIC M^o LVND●, short voided cross with CRVX in angles (SCBI 20 (Mack), 859 - this coin; N.770; S.1148), *very fine*

£200-250

PROVENANCE:

With Mack, Argyll, and Lincoln tickets

Spink Noble Numismatics, 18 March 1992, lot 411

Mack, part II, Glendining-Spink, 23 March 1977, lot 112, 'good fine, ex Parsons and Duke of Argyll', £40 to Lubbock Duke of Argyll, collection purchased by Spink in 1949

Mack ticket says 'Spink July 19 1962 30/-'

Argyll ticket says 'cost former owner 5/- at Lincolns VF 3/- Parsons'

Lincoln (in business until 1932) ticket is priced 5/-



x513

Aethelred II (978-1016), Penny, 1.77g, Crux type, Malmesbury, Ealdred, + ÆDEL RÆD REX ANGLORX, the NG and the ORX ligate, bare headed and draped bust left, sceptre in front, *rev.* + EALDRED M^o MALD, short voided cross with CRVX in angles (N.770; S.1148), *very fine*

£400-500

PROVENANCE:

Sotheby, April 1993, lot 87

Elmore Jones, lot 569

x514

Aethelred II (978-1016), Penny, 1.63g, Crux type, Norwich, Edmund, ÆDEL RÆD REX ANGLORX, bare headed and draped bust left, sceptre in front, *rev.* EADMVND M^o NOD, short voided cross with CRVX in angles (N.770; S.1148), *good fine*

£150-200

PROVENANCE:

I S Wright auction, 16 November 1992, lot 4323

Glendining, 5 February 1992, lot 73.

x515

Aethelred II (978-1016), Penny, 1.603g, Crux type, Thetford, Fugolta, + ÆDEL RÆD REX ANGLORX, the NG and the ORX ligate, bare headed and draped bust left, sceptre in front, *rev.* + FVHELTAE M^o DEOD, short voided cross with CRVX in angles (Carson, NC 1949, 114; N.770; S.1148), *edge slightly chipped at 5 o'clock, otherwise good very fine, a very rare moneyer*

£200-250

PROVENANCE:

'An Important Collection of Coins of the Thetford Mint', Spink auction 90, 16 March 1992, lot 245



516



517

x516

Aethelred II (978-1016), Penny, 1.70g, Crux type, Totnes, Dodda, + ÆDELRED REX ANGLORX, the ORX ligate, bare headed and draped bust left, within solid inner circle, sceptre in front, *rev.* + DODA M'Ō TOTAN, short voided cross with CRUX in angles (N.770; S.1148), *good very fine*

£200-250

PROVENANCE:

CNG auction, 5 October 1991, lot 385

x517

Aethelred II (978-1016), Penny, 1.49g, Long Cross type, Bath, Aelfric, + ÆÐDELRED REX ANLO, draped bust left, *rev.* + ÆLFRIC MŌO BÐ, voided long cross (N.774; S.1151; SCBI 51 (Estonia) 136 same dies), *end of reverse legend weak, good very fine*

£200-250

PROVENANCE:

Purchased from Baldwin, 28 July 1994

Fred Baldwin collection

W C Wells collection



518



519



520

x518

Aethelred II (978-1016), Penny, 1.62g, Long Cross type, Bath, Hildsige, + ÆDELRED REX ANGLŌ, draped bust left, *rev.* + HILDSIGE M'ŌO BÐ, voided long cross (N.774; S.1151; SCBI 7 (Copenhagen) 25 same dies), *light marks in front of face and peck marks on reverse, about very fine*

£150-200

PROVENANCE:

Purchased from Spink, January 1996

Spink Numismatic Circular, March 1994, no. 160

x519

Aethelred II (978-1016), Penny, 1.59g, Long Cross type, Bath, Wynstan, + ÆÐDELRED REX ANGLORX, the NG and RX ligate, draped bust left, *rev.* + PYNTAN M'ŌO BÐ, voided long cross (N.774; S.1151; SCBI 7 (Copenhagen) 28, SCBI 24 (West Country), 509, 510, and SCBI 51 (Estonia) 138 same dies), *surface cracks on obverse, peck marks both sides, otherwise very fine*

£250-300

PROVENANCE:

Purchased from Baldwin, July 1994

x520

Aethelred II (978-1016), Penny, 1.28g, subsidiary Long Cross type, Cambridge, Edwine, + ÆDELRED REX AN, draped bust left, *rev.* + EDPINE M'Ō GAN, voided long cross (BEH 1168; N.774; S.1151), *peck marks, very fine*

£200-250

PROVENANCE:

Purchased from Baldwin, July 1994



521



522



x521

Aethelred II (978-1016), Penny, 1.67g, Long Cross type, Cambridge, Godric, + ÆDELRAED REX ANGLOR, AN and OR ligate, draped bust left, *rev.* + GODRIC MO GRANT (N.774; S.1151; cf. SCBI 7 (Copenhagen) 379 with pellet added in second quarter; SCBI 50 (St Petersburg) 607, 608, same dies), *double struck and slightly rough, peck mark on reverse, very fine*

£200-250

PROVENANCE:

Spink Numismatic Circular, December 1993, no. 8418

x522

Aethelred II (978-1016), Penny, 1.68g, Long Cross type, Canterbury, Eadwold, + ÆDELRAED REX ANGLOR, the NG ligate, draped bust left, *rev.* + EAD POLD M'Ω'O CÆNT, voided long cross (N.774; S.1151), *obverse double struck, peck marks, very fine*

£150-200

PROVENANCE:

Purchased from Baldwin, July 1994



523



524



x523

Aethelred II (978-1016), Penny, 1.69g, Long Cross type, Canterbury, Godwine, + ÆDELRAED REX ANGLORX, the NG and the ORX ligate, draped bust left, *rev.* + GODPINE M'Ω'O CENT, voided long cross (N.774; S.1151; SCBI 7 (Copenhagen) 72 and SCBI 52 (Uppsala) 169 same dies), *peck marks, die crack from base of Ω to base of C on reverse, very fine*

£150-200

PROVENANCE:

Purchased from Baldwin, July 1994

x524

Aethelred II (978-1016), Penny, 1.56g, Long Cross type, Canterbury, Leofric, + ÆDELRAED REX ANGLORX, the NG and the ORX ligate, draped bust left, *rev.* + LEOFRIC MΩO CÆNT, voided long cross (N.774; S.1151; SCBI 7 (Copenhagen) 83, SCBI 50 (Hermitage) 626 and SCBI 51 (Estonia) 144 all same dies), *cleaned, very fine*

£150-200

PROVENANCE:

Pheatt, BDW, 21 March 1995, lot 521



525



526



x525

Aethelred II (978-1016), Penny, 1.65g, Long Cross type, Canterbury, Leofstan, + ÆDELRAED REX ANGLO, the NG ligate, draped bust left, *rev.* + LEOFSTAN M'ΩO CÆNT, long cross voided (N.774; S.1151), *peck marks, very fine*

£150-200

PROVENANCE:

Purchased from Baldwin, July 1994

Doubleday, Glendining, 6 October 1987, lot 60 (part)

x526

Aethelred II (978-1016), Penny, 1.69g, Long Cross type, Chester, Alfnioth, + ÆDELRAED REX ANGL, draped bust left, *rev.* + ÆLFNOÐ MΩO LEIG, voided long cross (N.774; S.1151; SCBI 7 (Copenhagen) 474, SCBI 51 (Estonia) 146 and SCBI 64 (Chester) 705 all same reverse die), *double struck on the obverse, a peck mark on reverse, good very fine*

£200-250

PROVENANCE:

Purchased from Harlan J Berk, April 2003



527



528



529

x527

Aethelred II (978-1016), Penny, 1.64g, Long Cross type, Chester, Aelfstan, + ÆDELRÆD REX ANGL, the NG ligate, draped bust left, *rev.* + ÆLFSTAN M'O LEIG, voided long cross (SCBI 7 (Copenhagen) 478, SCBI 50 (Hermitage) 638 and 639, and SCBI 52 (Uppsala) 176 all same dies; N.774; S.1151), *a light scratch on obverse and some peck marks, nearly very fine*

£200-250

PROVENANCE:

Spink Numismatic Circular, November 1997, no. 5487

x528

Aethelred II (978-1016), Penny, 1.57g, Long Cross type, Dover, Leofhyse, + ÆDELRÆD REX ANGL, the NG ligate, draped bust left, *rev.* + LEOFYHSE M'O DOFR, voided long cross (N.774; S.1151), *peck marks, good very fine*

£200-250

PROVENANCE:

Arnot, BDW, 21 March 1995, lot 139

x529

Aethelred II (978-1016), Penny, 1.66g, Long Cross type, Dover, Wulfstan, + ÆDELRÆD REX ANGLORX, the NG and ORX ligate, draped bust left, *rev.* + PVLFSTAN M'Q'O DOF, voided long cross (SCBI 7 (Copenhagen) 134 and SCBI 50 (Hermitage) 662 same dies; N.774; S.1151), *peck marks, soft in front of bust, very fine*

£200-250

PROVENANCE:

Purchased from Baldwin, July 1994



530



531



532

x530

Aethelred II (978-1016), Penny, 1.43g, Long Cross type, Exeter, Dunstan, + ÆDELRÆD REX ANGL, the NG ligate, draped bust left, *rev.* + DV.NSTA N M'O EAXE, voided long cross (SCBI 52 (Uppsala) 182 same dies; N.774; S.1151), *peck marks, good very fine*

£200-250

PROVENANCE:

Purchased from Baldwin, July 1994

x531

Aethelred II (978-1016), Penny, 1.32g, Long Cross type, Exeter, Mangod, + ÆDELRÆD REX ANGL, the NG ligate, draped bust left, *rev.* + MANGOD M'O EAXE, voided long cross (SCBI 7 (Copenhagen) 202, SCBI 25 (Helsinki) 197, and SCBI 51 (Estonia) 159 all same dies; N.774; S.1151), *peck marks, very fine*

£150-200

PROVENANCE:

Purchased from Baldwin, July 1994

Brettell, Glendining, 28 October 1970, lot 98

Purchased from Spink, March 1950

Raynes, Glendining, 15-17 February 1950, lot 397

x532

Aethelred II (978-1016), Penny, 1.77g, Long Cross type, Gloucester, Leofsige, + ÆDELRÆD REX ANGL, the NG ligate, draped bust left, *rev.* + LEOFSIGE M'O GLEA, voided long cross (N.774; S.1151), *plugged at 12 o'clock, peck marks, very fine*

£100-150

PROVENANCE:

Purchased from Baldwin, July 1994

Parsons, Glendining, 11 May 1954, lot 166 (part)



533

x533

Aethelred II (978-1016), Penny, 1.68g, Long Cross type, Hereford, Aelfget, ÆDELRÆD REX ANGLORX, the NG and the ORX ligate, draped bust left, *rev.* + ELFGET M^oO HERE, the HE ligate, voided long cross (SCBI 50 (Hermitage) 693 same dies, and also same obverse die as SCBI 7 (Copenhagen) 1284 (Wallingford, Aelfweard; N.774; S.1151), *peck marks, very fine*

£250-300

PROVENANCE:

Purchased from Baldwin, July 1994

Doubleday, Glendining, 6 October 1987, lot 157

Rashleigh, Glendining, 2 June 1953, lot 1953

x534

Aethelred II (978-1016), Penny, 1.36g, Long Cross type, Leicester, Thorulfr, + EDELRED REX ANGLO, the NG ligate, draped bust left, *rev.* + ÐVRVF MO LIHER, voided long cross (N.774; S.1151), *very fine*

£300-400

PROVENANCE:

Purchased from Baldwin, July 1994

A H Baldwin collection



535

x535

Aethelred II (978-1016), Penny, 1.32g, Long Cross type, Lewes, Alfgar, + ÆDELRED REX ANGLO, the NG ligate, draped bust left, *rev.* + ÆLFGAR M^oO LEPE, voided long cross (SCBI 20 (Mack) 925 this coin; N.774; S.1151), *pecks and a scratch on the reverse, about very fine*

£200-250

PROVENANCE:

Pheatt, BDW auction 11, 21 March 1995, lot 524

Commander R P Mack collection, purchased from Spink 1962

x536

Aethelred II (978-1016), Penny, 1.71g, Long Cross type, Lewes, Godfrith, + ÆDELRÆD REX ANGLORX, the NG and ORX ligate, draped bust left, *rev.* + GODIFRIÐ M^oΩ^o LÆP (SCMB 7 (Copenhagen) 452 same dies; N.774; S.1151), *peck marks both sides, very fine*

£200-250

PROVENANCE:

Purchased from Baldwin, July 1994



537

x537

Aethelred II (978-1016), Penny, 1.75g, Long Cross type, Lewes, Merewine, + ÆDELRED [R]EX ANGLO, the R blundered (perhaps over an N?), draped bust left, *rev.* + MEREPINE M^oΩ^o LÆPE, voided long cross (SCBI 7 (Copenhagen) 466 and SCBI 51 (Estonia) 173 same dies; N.774; S.1151), *peck marks, good very fine*

£250-300

PROVENANCE:

Conte, CNG, 19 September 2001, lot 1749

Peter Spink collection Oman, Christie's, 31 October 1972, lot 51

x538

Aethelred II (978-1016), Penny, 1.45g, Long Cross type, Lincoln, Aelfsige, + ÆDELRÆD REX ANGL, the NG ligate, draped bust left, *rev.* + ÆLFSIGE M^oO LINC, the NC ligate, voided long cross (Mossop VIII:31; SCBI 7 (Copenhagen), 522 same dies; N.774; S.1151), *very fine*

£150-200

PROVENANCE:

Purchased from Baldwin, July 1994

H R Mossop collection, a portion purchased by Baldwin in 1966



534



536



538



539



540

x539

Aethelred II (978-1016), Penny, 1.71g, Long Cross type, Lincoln, Aescman, + ÆDELRÆD REX ANGLO, the NG ligate, draped bust left, *rev.* + ÆSCMAN M'O LINC, the NC ligate, voided long cross (Mossop IX:5; SCBI 7 (Copenhagen) 523 same dies; N.774; S.1151), *peck marks, very fine*

£150-200

PROVENANCE:

Purchased from Baldwin, July 1994

H R Mossop collection, a portion purchased by Baldwin in 1966

x540

Aethelred II (978-1016), Penny, 1.66g, Long Cross type, Lincoln, Dreng, + ÆDELRÆD REX ANGLO, the NG ligate, draped bust left, *rev.* + DRENG M'O LINC, the NC ligate, voided long cross (Mossop XI:27; SCBI 36 (Berlin) 372 same dies; N.774; S.1151), *split in the centre, peck marks, otherwise good very fine*

£150-200

PROVENANCE:

Purchased from Baldwin, July 1994

A H F Baldwin collection



541

x541

Aethelred II (978-1016), Penny, 1.23g, Long Cross type, Lincoln, Grim, + ÆDELRÆD REX ANGL, the NG ligate, draped bust left, *rev.* + GRIM M'O LINCOL, voided long cross (Mossop XII:28; N.774; S.1151), *good very fine*

£250-300

PROVENANCE:

Purchased from Baldwin, July 1994



542



543

x542

Aethelred II (978-1016), Penny, 1.60g, Long Cross type, Lincoln, Osgut, + ÆDELRED REX ANGOX, draped bust left, *rev.* + OSGVT M'O LINC the NC ligate, voided long cross (Mossop XIII:14; SCBI 7 (Copenhagen) 572 same dies; N.774; S.1151), *peck marks on reverse, very fine*

£150-200

PROVENANCE:

Purchased from Baldwin, July 1994

H R Mossop collection, a portion purchased by Baldwin in 1966

x543

Aethelred II (978-1016), Penny, 1.60g, Long Cross type, Lincoln, Osmund, + ÆDELRÆD REX ANGL, the NG ligate, draped bust left, *rev.* + OSMVND M'O LIN, voided long cross (Mossop XIII:30 this coin; N.774; S.1151), *peck marks, good very fine and attractively toned*

£200-250

PROVENANCE:

Purchased from Baldwin, July 1994

H R Mossop collection, a portion purchased by Baldwin in 1966



544



545

x544

Aethelred II (978-1016), Penny, 1.42g, Long Cross type, Lincoln, Sumerletha, + ÆDELRAED REX ANGLO, the NG ligate, small cross in field behind bust, draped bust left, *rev.* + SVMERLED MO LIN, voided long cross (Mossop XV:1; SCBI 7 (Copenhagen) 596 same dies; N.774; S.1151; noted by Parsons, BNJ XIII, p. 29), *peck mark on reverse, good very fine, a scarce variety*

£300-400

PROVENANCE:

Conte, CNG, 19 September 2001, lot 1750

Arnot, BDW, 21 March 1995, lot 146

x545

Aethelred II (978-1016), Penny, 1.76g, Long Cross type, Lincoln, Unbein, + ÆDELRED REX ANGLO, the NG ligate, draped bust left, *rev.* + VNBEIN M^oΩ^o LINC, voided long cross (Mossop XV:24; SCBI 7 (Copenhagen) 622 same dies; N.774; S.1151), *good very fine*

£200-250

PROVENANCE:

Purchased from Baldwin, July 1994

H R Mossop collection, a portion purchased by Baldwin in 1966



546

x546

Aethelred II (978-1016), Penny, 1.77g, Long Cross type, Lincoln, Wulfric, + ÆDELRED REX ANGOX, the NG ligate, draped bust left, *rev.* + PVLFRIC M^oΩ^o LNC, the NC ligate, voided long cross (Mossop XV:28; SCBI 7 (Copenhagen) 633 same dies; N.774; S.1151), *good very fine*

£150-200

PROVENANCE:

Purchased from Baldwin, July 1994

H R Mossop collection



547



548

x547

Aethelred II (978-1016), Penny, 1.68g, Long Cross type, London, Aelfric, + ÆDELRAED REX ANGLO, the NG ligate, draped bust left, *rev.* + ÆLFRIC MO LVND, voided long cross (N.774; S.1151), *very fine*

£150-200

PROVENANCE:

Purchased from Baldwin, July 1994

x548

Aethelred II (978-1016), Penny, 1.45g, Long Cross type, London, Aethelwerd, + ÆDELRAED REX ANGLO, the NG ligate, draped bust left, *rev.* + ÆDELPERD M^oΩ^o LVND, voided long cross (N.774; S.1151), *extremely fine*

£250-300

PROVENANCE:

Purchased from Baldwin, July 1994



x549

Aethelred II (978-1016), Penny, 1.66g, Long Cross type, London, Aethelwerd, ÆDEL RÆD REX ANGL, the NG ligate, draped bust left, *rev.* ÆDEL PERD M'O LVN, voided long cross, pellet in 2nd and 3rd quarters (N.774; S.1151; SCBI 7 (Copenhagen) 693; noted by Parsons, BNJ XIII, p. 25 and this coin illustrated), *peck marks on reverse, very fine*

£150-200

PROVENANCE:

The 'Viking' collection, Spink auction 150, 14 March 2001, lot 1015

Parsons, Sotheby, 28 October - 1 November 1929, lot 137 (part), to Daniels

The coins in the Parsons collection were not illustrated, but this coin was used to illustrate his article in the BNJ where the caption states that it is in his collection (other coins illustrating the article were from various sources including Carlyon-Britton, W C Wells, the Royal Cabinet, Stockholm, and the British Museum). Furthermore, in the Sotheby catalogue of the Parsons collection, though this coin is part of a lot of five, it is fully described, 'rare variety with two pellets on reverse'. As Daniels was a dealer we cannot be sure where the coin went after the Parsons sale. At the sale of the Daniels' remaining stock, dispersed 'by order of the executors' at Glendining, 16 March 1936, sixteen London Pennies of Aethelred II were offered in lot 305, the description being 'Aethelred II pennies of London (16), various types and different moneyers, very good', but it is not likely that this coin would be still be in stock after six years.

x550

Aethelred II (978-1016), Penny, 1.49g, Long Cross type, London, Aelfwine, + ÆDEL RÆD REX ANGL, the NG ligate, draped bust left, *rev.* + ÆLFINE M'O LVND, voided long cross (N.774; S.1151), *light marks on reverse, good very fine*

£200-250

PROVENANCE:

Noble Numismatics auction 50, 21 March 1996, lot 2542



x551

Aethelred II (978-1016), Penny, 1.66g, Long Cross type, London, Brunstan, + ÆDEL RÆD REX ANGL, the NG ligate, draped bust left, *rev.* + BRVNSTAN M'O LVND, voided long cross (N.774; S.1151), *peck marks, good fine*

£100-150

PROVENANCE:

Purchased from Baldwin, July 1994

x552

Aethelred II (978-1016), Penny, 1.52g, Long Cross type, London, Eadmund, + ÆDEL RÆD REX ANGL, the NG ligate, draped bust left, *rev.* + EA'DMVND M'O LVND, voided long cross (N.774; S.1151), *peck marks on reverse, slightly crinkled, very fine*

£100-150

PROVENANCE:

Purchased from Baldwin, July 1994

x553

Aethelred II (978-1016), Penny, 1.42g, Long Cross type, London, Eadwine, + ÆDEL RÆD REX ANGL, the NG ligate, draped bust left, *rev.* + EADPINE M'O LVND, the NE ligate, voided long cross (N.774; S.1151), *good very fine*

£200-250

PROVENANCE:

Purchased from Baldwin, July 1994



554



555

x554

Aethelred II (978-1016), Penny, 1.17g, Long Cross type, London, Eadwine, + ÆDELRAED REX ANG, the NG ligate, draped bust left, *rev.* + EDPINE M:O LVN, the NE ligate, voided long cross (N.774; S.1151), *some verdigris, good very fine*

£200-250

PROVENANCE:

Purchased from Baldwin, July 1994

x555

Aethelred II (978-1016), Penny, 1.60g, Long Cross type, London, Eadwold, + ÆDELRAED REX ANGLO, the NG ligate, draped bust left, *rev.* + EADPOLD M'O LVND, voided long cross (N.774; S.1151), *peck marks, very fine*

£150-200

PROVENANCE:

Noble Numismatics auction 65, 15-16 November 2000, lot 725



556



557

x556

Aethelred II (978-1016), Penny, 1.51g, Long Cross type, London, Godric, + ÆDELRAED REX ANGLO, the NG ligate, draped bust left, *rev.* + GODRIC M'O LVND, voided long cross (N.774; S.1151), *peck marks, very fine*

£150-200

PROVENANCE:

CNG auction 29, March 1994, lot 1596

x557

Aethelred II (978-1016), Penny, 1.49g, Long Cross type, London, Godwine, + ÆDELRAED REX ANG, the NG ligate, draped bust left, *rev.* + GODPINE M'O LVND, voided long cross (N.774; S.1151), *peck marks, very fine*

£150-200

PROVENANCE:

Purchased from Baldwin, July 1994



558



559

x558

Aethelred II (978-1016), Penny, 1.56g, Long Cross type, London, Heawulf, + ÆDELRAED REX ANGLO, the NG ligate, draped bust left, *rev.* + HEAPVLF MO LVND the HE ligate, voided long cross (N.774; S.1151), *good very fine*

£200-250

PROVENANCE:

Purchased from Baldwin, July 1994

x559

Aethelred II (978-1016), Penny, 1.55g, Long Cross type, London, Leofnoth, + ÆDELRAED REX ANGLO, the NG ligate, draped bust left, *rev.* + LEOFNOÐ M'O LVND, voided long cross (N.774; S.1151), *very fine*

£150-200

PROVENANCE:

Purchased from Baldwin, July 1994



560

x560

Aethelred II (978-1016), Penny, 1.56g, Long Cross type, London, Leofric, + ÆDELRÆD REX A'NGL', the NG ligate, draped bust left, *rev.* + LEOFRIC M'Q LVND, voided long cross (N.774; S.1151), *extremely fine*

£200-250

PROVENANCE:

Purchased from Baldwin, July 1994



561

x561

Aethelred II (978-1016), Penny, 1.38g, Long Cross type, London, Leofrith, + ÆDEL.RÆD REX ANGLO, the NG ligate, draped bust left, *rev.* + LEOFRYÐ M'O LVND, voided long cross (N.774; S.1151), *very fine*

£150-200

PROVENANCE:

Purchased from Baldwin, July 1994



562

x562

Aethelred II (978-1016), Penny, 1.57g, Long Cross type, London, Leofwine, + ÆDELRÆD REX ANGLO, the NG ligate, draped bust left, *rev.* + LEOFPINE M'O LVND, the NE ligate, voided long cross (N.774; S.1151), *peck marks on reverse, very fine*

£150-200

PROVENANCE:

Glendining, 8 September 1993, lot 435



563

x563

Aethelred II (978-1016), Penny, 1.42g, Long Cross type, London, Osulf, + ÆDELRÆD REX ANGL, the NG ligate, draped bust left, *rev.* + OSVL.F M'O LVND, voided long cross (N.774; S.1151), *good very fine*

£200-250

PROVENANCE:

Purchased from Baldwin, July 1994



564

x564

Aethelred II (978-1016), Penny, 1.65g, Long Cross type, London, Sibwine, + ÆDELRÆD REX ANGLOX, the NG ligate, draped bust left, *rev.* + SIBPINE M'Q LVND, the NE ligate, voided long cross (N.774; S.1151), *peck marks, good very fine*

£200-250

PROVENANCE:

Purchased from Baldwin, July 1994



565

x565

Aethelred II (978-1016), Penny, 1.86g, Long Cross type, London, Swetinc, + ÆDELRÆD REX ANGL, the NG ligate, draped bust left, *rev.* + SPETINC M'O LVND, the NC ligate, voided long cross (N.774; S.1151), *peck marks on reverse, very fine*

£200-250

PROVENANCE:

Purchased from Baldwin, July 1994



566



567



568

x566

Aethelred II (978-1016), Penny, 1.42g, Long Cross type, London, Wulfwine, + ÆDELRÆD REX ANGL, the NG ligate, draped bust left, *rev.* + PVLFPINE M'O LVND, voided long cross (N.774; S.1151), *hairline mark on the obverse otherwise good very fine*

£150-200

PROVENANCE:

I S Wright auction, 16 November 1992, lot 4325,

x567

Aethelred II (978-1016), Penny, 1.60g, Long Cross type, Lydford, Goda, + ÆDELRÆD REX ANGLO, the NG ligate, draped bust left, *rev.* + GODA MEO LYD.A, voided long cross (N.774; S.1151), *peck marks, very fine*

£200-250

PROVENANCE:

Spink Numismatic Circular, May 1993, no.2601

Brettell, lot 447 Radford, Sotheby, 12 June 1944, lot 34

x568

Aethelred II (978-1016), Penny, 1.23g, Long Cross type, Lympe, Godric, + ÆDELRÆD REX ANGLO, the NG ligate, draped bust left, *rev.* + GODRIC MEO LIMNI, voided long cross (N.774; S.1151), *smoothed, pierced at 12 o'clock, fine, extremely rare*

£150-200

PROVENANCE:

Sotheby, 19 April 1993, lot 96

Elmore Jones, Glendining, 12 May 1971, lot 559



569



570



571

x569

Aethelred II (978-1016), Penny, 1.72g, Long Cross type, Norwich, Aelfric, + ÆDELRÆD REX ANG, the NG ligate, draped bust left, *rev.* + ÆLFRIC MEO NORÐ, voided long cross (N.774; S.1151), *peck marks on reverse, very fine*

£150-200

PROVENANCE:

Purchased from Spink, February 2007

x570

Aethelred II (978-1016), Penny, 1.41g, Long Cross type, Norwich, Hwatemán, + ÆDELRÆD REX ANG, the NG ligate, draped bust left, *rev.* + HPASEMAN M'O NOID, voided long cross (N.774; S.1151), *peck marks, soft on the obverse and double struck on the reverse, fine*

£100-150

PROVENANCE:

Purchased from Baldwin, July 1994

Glendining, 6 November 1992, lot 392

Doubleday, Glendining, 8 October 1987, lot 374

Duke of Argyll, collection purchased by Spink in 1949

x571

Aethelred II (978-1016), Penny, 1.71g, Long Cross type, Norwich, Swertinc, + ÆDELRÆD REX ANG, the NG ligate, draped bust left, *rev.* + SVERTIC M'O NORÐ, voided long cross (N.774; S.1151), *nearly very fine*

£150-200

PROVENANCE:

Arnot, BDW, 21 March 1995, lot 150



572



573



574



575



576



577

x572

Aethelred II (978-1016), Penny, 1.64g, Long Cross type, Oxford, Aethelwine, + ÆDELRED REX ANGLO, the NG ligate, draped bust left, *rev.* + ÆDELPINE MO' ON OXN, voided long cross (N.774; S.1151), *heavily peck marked and some cracks, otherwise very fine*

£100-150

PROVENANCE:

Purchased from Baldwin, July 1994

x573

Aethelred II (978-1016), Penny, 1.49g, Long Cross type, Rochester, Eadwerd, + ÆDELRED REX ANGLO, the NG ligate, draped bust left, *rev.* + EADPERD MΩO ROFE, voided long cross (N.774; S.1151), *crack from edge to nose, peck marks, good fine*

£100-150

PROVENANCE:

Purchased from Baldwin, July 1994

x574

Aethelred II (978-1016), Penny, 1.61g, Long Cross type, Rochester, Edsige, + ÆDELRED REX ANGLORX, the NG and ORX ligate, draped bust left, *rev.* + EADSIGE MΩO ROFEC, voided long cross (N.774; S.1151), *a few peck marks, very fine*

£150-200

PROVENANCE:

Purchased from Baldwin, January 1996

Elmore Jones, Glendining, 12 May 1971, lot 669

x575

Aethelred II (978-1016), Penny, 1.72g, Long Cross type, Rochester, Edwine, + ÆDELRED REX ANGLORX, the NG ligate, draped bust left, *rev.* + EDPINE MΩO ROFE, the NE ligate, voided long cross (N.774; S.1151), *peck marks both sides, very fine*

£150-200

PROVENANCE:

Arnot, BDW, 21 March 1995, lot 151

x576

Aethelred II (978-1016), Penny, 1.54g, Long Cross type, Rochester, Goldwine, + ÆDELRED REX ANGLO, the NG ligate, draped bust left, *rev.* + GOLDPINE M' O ROFE, voided long cross (N.774; S.1151), *one or two peck marks but better than very fine*

£200-250

PROVENANCE:

Purchased from Baldwin, July 1994

x577

Aethelred II (978-1016), Penny, 1.78g, Long Cross type, Shaftesbury, Goda, + ÆDELRED REX NGLORX, the NG and OR ligate, draped bust left, *rev.* + GODA MΩ' O SCEFT, voided long cross (N.774; S.1151), *peck marks, very fine*

£300-350

PROVENANCE:

Purchased from Spink, February 2007

Doubleday, Glendining, 6 October 1987, lot 435

L A Lawrence, part II, Glendining, 14 March 1951, lot 258



578



579



580

x578

Aethelred II (978-1016), Penny, 1.65g, Long Cross type, Southwark, Leofwine, + ÆDEL RÆD REX ANGLO, the NG ligate, draped bust left, *rev.* + L•EOFPINE M^oO SVDB, ÆUÛ voided long cross (N.774; S.1151), *peck marks, very fine*

£150-200

PROVENANCE:

Purchased from Baldwin, July 1994

x579

Aethelred II (978-1016), Penny, 1.52g, Long Cross type, Stamford, Cristin, + ÆDEL RÆD REX ANGL, the NG ligate, draped bust left, *rev.* + CRISTIN M^oO STAN, voided long cross (N.774; S.1151), *peck marks, good very fine*

£250-300

PROVENANCE:

Purchased from Baldwin, July 1994

x580

Aethelred II (978-1016), Penny, 1.50g, Long Cross type, Stamford, Swertgar, + ÆDEL RÆD REX ANGL, the NG ligate, draped bust left, *rev.* + SPERTGAR M^oO STAN, voided long cross (N.774; S.1151), *cracks, and double struck on reverse, otherwise very fine*

£150-200

PROVENANCE:

Spink Numismatic Circular, December 1994, no. 7893



581



582



583

x581

Aethelred II (978-1016), Penny, 1.77g, Long Cross type, Thetford, Grim, + ÆDEL RÆD REX ANG, the NG ligate, draped bust left, *rev.* + GRIM MO ÆEOD, voided long cross (N.774; S.1151), *good fine*

£100-150

PROVENANCE:

‘An Important Collection of Coins of the Thetford Mint’, Spink auction 90, 16 March 1992, lot 249

‘Polish Hoard’, Glendining, 1 March 1973, lot 26

x582

Aethelred II (978-1016), Penny, 1.254g, Long Cross type, Thetford, Mana, + ÆDEL RÆD REX ANGLO, the NG ligate, draped bust left, *rev.* + MANNA M^oO ÆEOD, voided long cross (N.774; S.1151), *obverse lettering double struck, nearly very fine*

£150-200

PROVENANCE:

‘An Important Collection of Coins of the Thetford Mint’, Spink auction 90, 16 March 1992, lot 250

‘Polish Hoard’, Glendining, 14 March 1973, lot 36 (part)

x583

Aethelred II (978-1016), Penny, 1.345g, Long Cross type, Thetford, Osbern, + ÆDEL RÆD REX ANGLO, the NG ligate, draped bust left, *rev.* + OSBERN M^oO ÆEOD, voided long cross (N.774; S.1151), *good very fine*

£250-300

PROVENANCE:

‘An Important Collection of Coins of the Thetford Mint’, Spink auction 90, 16 March 1992, lot 251



584



585



586

x584

Aethelred II (978-1016), Penny, 1.56g, Long Cross type, Totnes, Wulfmaer, + ÆDELŔÆD REX ANGLO, the NG ligate, draped bust left, *rev.* + PVLFMÆR M'O TOTA, voided long cross (N.774; S.1151), *some surface cracks, nearly very fine*

£150-200

PROVENANCE:

Glendining, 8 September 1993, lot 436

Brettell, Glendining, 8 March 1990, lot 491

Lord Grantley, Glendining, 22 March 1944, lot 1136

x585

Aethelred II (978-1016), Penny, 1.67g, Long Cross type, Wilton, Saewine, + ÆDELŔÆD REX ANGLORX, the NG and ORX ligate, draped bust left, *rev.* + SÆPINE MΩO PILT, voided long cross (N.774; S.1151), *peck marks, very fine*

£150-200

PROVENANCE:

Purchased from Baldwin, July 1994

x586

Aethelred II (978-1016), Penny, 1.73g, Long Cross type, Winchester, Aethelgar, + ÆDELŔÆD REX ANGLOX, the NG ligate, draped bust left, *rev.* + Æ[Ð]ELGAR M'O PINT, voided long cross (N.774; S.1151), *good very fine*

£150-200

PROVENANCE:

Purchased from Baldwin, July 1994

Doubleday, Glendining, 6 October 1987, lot 563 (part)

L A Lawrence, part II, Glendining, 14 March 1951, lot 258



587



588



589

x587

Aethelred II (978-1016), Penny, 1.76g, Long Cross type, Winchester, Bryhtsige, + ÆDELŔÆD REX ANGLO, the NG ligate, draped bust left, *rev.* + BYRHSIGE MΩO PINT, voided long cross (N.774; S.1151), *very fine*

£150-200

PROVENANCE:

Christie's, 28 April 1993, lot 595

x588

Aethelred II (978-1016), Penny, 1.69g, Long Cross type, Winchester, Godman, + ÆDELŔÆD REX ANGLO, the NG ligate, draped bust left, *rev.* + GODEMAN MΩO PINT, voided long cross (N.774; S.1151), *very fine*

£150-200

PROVENANCE:

Spink auction 101, 24 November 1993, lot 68

x589

Aethelred II (978-1016), Penny, 1.65g, Long Cross type, Winchester, Godwine, + ÆDELŔÆD REX ANGLO, the NG ligate, draped bust left, *rev.* + GODPINE M'O PINT, voided long cross (N.774; S.1151; SCBI 20 (Mack) 969 same dies), *good very fine*

£250-300

PROVENANCE:

Baldwin auction, 7 May 2008, lot 2268



590



591



592

x590

Aethelred II (978-1016), Penny, 1.76g, Long Cross type, Worcester, Wulfric, + ÆDEL RÆD REX ANGLORX, the NG and ORX ligate, draped bust left, *rev.* + PVLFRIC MΩO PIHR, voided long cross (N.774; S.1151), *a few peck marks, good very fine*

£250-300

PROVENANCE:

Purchased from Baldwin, July 1994

x591

Aethelred II (978-1016), Penny, 1.64g, Long Cross type, York, Sumerlede, + ÆDEL RÆD REX ANGLO, the NG ligate, draped bust left, *rev.* + SVMERLIDA M'O EOFR, voided long cross (N.774; S.1151), *very fine*

£150-200

PROVENANCE:

Colonial Rare Coins, 1 September 1992, lot 1272

x592

Aethelred II (978-1016), Penny, 1.70g, Long Cross type, York, Swart, + ÆDEL RÆD REX ANGLO, the NG ligate, draped bust left, *rev.* + SPERT M'O EOFR, voided long cross (N.774; S.1151), *two peck marks on reverse, very fine*

£150-200

PROVENANCE:

Spink Numismatic Circular, March 1992, no. 869

Glendining, 6 November 1991, lot 104



593



594



595

x593

Aethelred II (978-1016), Penny, 1.54g, Long Cross type, York, Unulf, + ÆDEL RÆD REX ANGLO, the NG ligate, draped bust left, *rev.* + VNNVLF M'O EOFR, voided long cross (SCBI 20 (Mack) 982 this coin; N.774; S.1151), *very fine*

£150-200

PROVENANCE:

Purchased from Spink, January 1996

Mack collection Duke of Argyll collection

x594

Aethelred II (978-1016), Penny, 1.36g, Helmet type, London, Aethelmaer, + ÆDELRED RE°X A°NGL°, helmeted and armoured bust left, *rev.* + ÆDELMER MO LVND, long cross over square with three pellets at each angle (N.775; S.1152), *wavy flan, a few peck marks, very fine*

£200-250

PROVENANCE:

Sotheby, 22 March 1990, lot 376 part

x595

Aethelred II (978-1016), Penny, 1.38g, Helmet type, London, Aethelward, + ÆDELRED REX AI, helmeted and armoured bust left, *rev.* + EDELPERD MO LVND, long cross over square with three pellets at each angle, two extra crosses in first and fourth quarters (N.775; S.1152; Parsons, BNJ XIII, p.30), *very fine*

£200-250

PROVENANCE:

Sotheby, 22 March 1990, lot 376 part



596



597



598

x596

Aethelred II (978-1016), Penny, 1.46g, Helmet type, Winchester, Aethelgar, + ÆDELRED REX ANGL, helmeted and armoured bust left, *rev.* + ÆDELGAR M^oO PINT, long cross over square with three pellets at each angle (N.775; S.1152), *some peck marks both sides, very fine*

£150-200

PROVENANCE:

Spink Noble auction 38, 18 March 1992, lot 413

x597

Aethelred II (978-1016), Penny, 1.36g, Helmet type, York, Ira, + ÆDELRED REX ANGL^o, helmeted and armoured bust left, *rev.* + IRRRA MO EOFR, long cross over square with three pellets at each angle (SCBI 20 (Mack) 1008 this coin; N.775; S.1152), *some peck marks and cracks, good fine*

£150-200

PROVENANCE:

Purchased from Colonial Rare Coins, July 1991
Mack, part II, Glendining, 23 March 1977, lot 164
Duke of Argyll collection

x598

Aethelred II (978-1016), Penny, 1.75g, Last Small Cross type, Exeter, Wulfsgie, + ÆDELRÆD REX ANGLORX, laureate and draped bust left, *rev.* + PVLFISGE ON EAXECS:, small cross pattée (N.777: S.1154), *slight crease, one or two peck marks, very fine*

£150-200

PROVENANCE:

Christie's, 8 October 1991, lot 764



599



600

x599

Aethelred II (978-1016), Penny, 1.15g, Last Small Cross type, London, Eadsi, ÆDELRÆD REX ANGL^o L:, laureate and draped bust left, *rev.* + EA•DSI M^oO LVN•II, small cross pattée (SCBI 25 (Helsinki) 513, same dies; Hildebrand 440, same dies, as Dunwich; N.777; S.1154), *from worn dies, very fine*

£250-300

PROVENANCE:

CNG auction 70, 21 September 2005, lot 1252
Conte, Triton VI, 14-15 January 2003, lot 1342

Offered as a coin of Dunwich in Triton VI, but reattributed to London in CNG auction 70. The coin was originally attributed to the mint of Dunwich by Hildebrand and this attribution was supported by Parsons in 'The Dunwich Mint', BNJ IX (1912), pp.119-128. The attribution was refuted by Dolley in 'A Note on the Mythical Mint of Dunwich' in SNC November 1955, p.470, where he noted that the coin was a reverse die duplicate of Hildebrand 2365 which was a London coin. 'The L of London admittedly having the semblance of being cut in over another letter.' On the authority of that note, both North and Seaby removed Dunwich from their lists of Anglo-Saxon mints. This coin, also struck from worn dies, shows clearly how the error had arisen.

x600

Aethelred II (978-1016), Penny, 1.16g, Last Small Cross type, London, Lifinc, + ÆDELRÆD REX ANGL^o, laureate and draped bust left, *rev.* + LYFINC MO LVNDENE, small cross pattée (SCBI 25 (Helsinki) 530 same dies; N.777: S.1154), *peck marks, some edge splits, very fine*

£100-150

PROVENANCE:

Sotheby, 22 March 1990, lot 376



601



602

x601

Aethelred II (978-1016), Penny, 1.07g, Last Small Cross type, Lydford, Godric, + •ÆDELŔÆD REX ANGLO, the NG ligate, laureate and draped bust left, *rev.* GODRIC ON LYDANFO', small cross pattée (N.777: S.1154), *very fine*

£100-150

PROVENANCE:

Purchased from Spink, January 1996

x602

Aethelred II (978-1016), Penny, 1.29g, Last Small Cross type, Norwich, Eadwacer, + ÆDELŔÆD RE ANGL, laureate and draped bust left, *rev.* + EDPACER O' NORÐP, small cross pattée (SCBI 7 (Copenhagen) 1010 same dies, 1011 same obverse die; N.777: S.1154), *portrait double struck, surface cracks, fine*

£100-150

PROVENANCE:

Purchased from M R Roberts, May 1991



603



604



603 (x2)



604 (x2)

x603

Hiberno-Norse coinage, Sihtric Anlafsson and related issues (c.995-1020), phase I (c.997-1020), Penny, 1.30g, imitation of Aethelred II 'Long Cross' type, Dublin, Faeremin, + SIHTRC REX DYFLM, draped bust left, pellet behind head, *rev.* + F'Æ REMI NMO DYFLI, long cross (S.6103), *peck marks on reverse, some surface striking cracks, extremely fine*

£1,500-2,000

PROVENANCE:

Davison auction 8, 10 April 1997, lot 518

x604

Cnut (1016-35), Penny, 1.01g, Quatrefoil type, Chester, Alcsige, + CNVT REX ANGLORVM, crowned and draped bust left within quatrefoil, *rev.* + ALCSI ON LEG, long cross on quatrefoil, pellet in each angle (N.781; S.1157), *extremely fine*

£400-500

PROVENANCE:

Spink Noble, September 1988



605



606



607

x605

Cnut (1016-35), Penny, 1.47g, Quatrefoil type, Huntingdon, Alfnoth, + CNVT REX ANGLORVM, legend begins at 12 o'clock, crowned and draped bust left within quatrefoil, *rev.* + ÆLFNOÐ M⁺ HVN, long cross on quatrefoil, pellet in each angle (N.781; S.1157), *surfaces a little wolley, very fine*

£300-400

PROVENANCE:

Purchased from Dolphin Coins, May 1995

Cambridge (Cnut) hoard

x606

Cnut (1016-35), Penny, 1.07g, Quatrefoil type, Stamford, Brunstan, + CNVT REX ANGLORM, the RM ligate, legend begins at 6 o'clock, crowned and draped bust left within quatrefoil, *rev.* + BRVNSTAN SAN, long cross on quatrefoil, pellet in each angle (N.781; S.1157), *very fine*

£400-500

PROVENANCE:

Purchased from Dolphin Coins, May 1995

Cambridge (Cnut) hoard

x607

Cnut (1016-35), Penny, 1.03g, Pointed Helmet type, London, Aegelwerd, + CNVT: RECX A.; helmeted and draped bust left, sceptre in front, *rev.* + ÆGELPERD ON LVN:, short voided cross, pellet at centre and pellets in annulets in angles (N.787; S.1158), *very fine*

£100-150

PROVENANCE:

Davisson's auction 8, 10 April 1997, lot 515



608



609



610

x608

Cnut (1016-35), Penny, 1.00g, Pointed Helmet type, London, Brungar, + CNVT RECX A, helmeted and draped bust left, sceptre in front, *rev.* + BRVNGAR ON LVN, short voided cross, pellet at centre and pellets in annulets in angles (N.787; S.1158), *very fine*

£100-150

PROVENANCE:

Noble Numismatics auction 58, 7 July 1998, lot 4176

x609

Cnut (1016-35), Penny, 0.98g, Pointed Helmet type, London, Edwerd, + CNVT REX ANG, helmeted and draped bust left, sceptre in front, *rev.* + EL•PERD ON LVND:, short voided cross, pellet at centre and pellets in annulets in angles (N.787; S.1158), *good very fine*

£100-150

PROVENANCE:

Noble Numismatics auction 58, 7 July 1998, lot 4178

x610

Cnut (1016-35), Penny, 1.03g, Pointed Helmet type, London, Edwine, + CNVT RECX A., helmeted and draped bust left, sceptre in front, *rev.* EDWINE ON LVND:, short voided cross, pellet at centre and pellets in annulets in angles (N.787; S.1158), *good very fine*

£150-200

PROVENANCE:

Noble Numismatics auction 58, 7 July 1998, lot 4177



611



612



613

- x611** **Cnut** (1016-35), Penny, 0.98g, Pointed Helmet type, London, Wynstan, + CNVT:RCEX:, helmeted and draped bust left, sceptre in front, *rev.* + PYNSTAN ON LVND, short voided cross, pellet at centre and pellets in annulets in angles (N.787; S.1158), *good very fine* £100-150

PROVENANCE:

Noble Numismatics auction 58, 7 July 1998, lot 4182

- x612** **Cnut** (1016-35), Penny, 0.98g, Pointed Helmet type, Stamford, Aedwine, + CNVT: EX ANG, helmeted and draped bust left, sceptre in front, *rev.* + ÆDPINE ON STAN, short voided cross, pellet at centre and pellets in annulets in angles (N.787; S.1158), *good very fine* £200-250

PROVENANCE:

Sotheby, 3 October 1991, lot 429

Sotheby, 13 February 1986, lot 39

- x613** **Cnut** (1016-35), Penny, 0.90g, Pointed Helmet type, York, Sunulf, + CNVT REX ANGL, helmeted and draped bust left, sceptre in front, *rev.* + SVNOLF M-O EOF:, short voided cross, pellet at centre and pellets in annulets in angles (N.787; S.1158), *crinkled, peck marks, fine* £100-150

PROVENANCE:

Noble Numismatics auction 65, 16 November 2000, lot 726



614



614 (x2)

- x614** **Cnut** (1016-35), a 'local issue' with his title King of Denmark, Penny, 0.89g, Quatrefoil type, Thetford?, Rulfsige?, + AE.O.C-NVI ER DENO 'EX, crowned and draped bust left, in quatrefoil, *rev.* + RVLZIGE MO DR, long cross on quatrefoil, pellet in each angle (N.-; S.-), *typical style for these local issues, good very fine, very rare* £600-800

PROVENANCE:

Triton VI, 13 January 2003, lot 1365

William Conte collection

'As is typical with these issues from local dies, the legends are blundered, rendering positive identification of the mint and moneyer uncertain. The obverse legend appears to retain elements of Aethelred's types, but the 'cnvi deno portions of the legend, and the portrait style, clearly indicate Cnut (cf. Malmer obverse 738).'



615



616



617

- x615** **Cnut** (1016-35), Penny, 1.04g, Short Cross type, Dover, Edwine, + CNV.T RE:C:, diademed and draped bust left, lis sceptre in front, *rev.* + EDPINE ON DOFRA:., short voided cross, pellet in centre (N.790; S.1159), *very fine* £250-300

PROVENANCE:

Holger Hede, Oslo, 3 November 1991, lot 20

- x616** **Cnut** (1016-35), Penny, 1.13g, Short Cross type, Huntingdon, Ada, + CNV.T RECX, diademed and draped bust left, lis sceptre in front, *rev.* + ADA. ON HVNTED:., short voided cross, pellet in centre (N.790; S.1159), *very fine* £250-300

PROVENANCE:

Purchased from Dolphin Coins, September 1993
Cambridge hoard

- x617** **Cnut** (1016-35), Penny, 1.16g, Short Cross type, Leicester, Elfwine, + CNVT RECX, diademed and draped bust left, lis sceptre in front, *rev.* + ELEPINE ON LEICE, short voided cross, pellet in centre (N.790; S.1159), *flan slightly dishd, good very fine* £250-300

PROVENANCE:

Purchased from Dolphin Coins, May 1995
Cambridge hoard

618



619



620

- x618** **Cnut** (1016-35), Penny, 1.14g, Short Cross type, London, Brungar, + CNVT R.ECX, diademed and draped bust left, lis sceptre in front, *rev.* + BRVNGAR ON LVN, short voided cross, pellet in centre (N.790; S.1159), *very fine* £100-150

PROVENANCE:

Noble Numismatics auction 86, 21-23 November 2007, lot 774

- x619** **Cnut** (1016-35), Penny, 1.02g, Short Cross type, London, Swan, + CNVT RECX, diademed and draped bust left, lis sceptre in front, *rev.* + SPAN ON LVNDEN, short voided cross, pellet in centre (N.790; S.1159), *peck marked, fine* £100-150

PROVENANCE:

Christie's, 8 October 1991, lot 764 part

- x620** **Cnut** (1016-35), Penny, 1.07g, Short Cross type, Stamford, Leofdaeg, + CNVT REX:, diademed and draped bust left, lis sceptre in front, *rev.* + LEOFDEI ON STAN, short voided cross, pellet in centre (N.790; S.1159), *good very fine* £150-200

PROVENANCE:

Davissons auction 8, 10 April 1997, lot 516



621



622



623

- x621** **Cnut** (1016-35), Penny, 1.15g, Short Cross type, Thetford, Brunstan, + CNVT REC.X; diademed and draped bust left, lis sceptre in front, *rev.* + RVNSTAN ON ÐE, short voided cross, pellet in centre (N.790; S.1159), *surface crack on obverse otherwise extremely fine* £150-200

PROVENANCE:

Purchased from I S Wright, January 1991

- x622** **Cnut** (1016-35), Penny, 1.06g, Short Cross type, York, Godman, + CNV.T R.ECX, diademed and draped bust left, lis sceptre in front, *rev.* + GODMAN ON EOFE, short voided cross, pellet in centre (N.790; S.1159), *good very fine* £180-220

PROVENANCE:

Spink Australia auction 33, 15 August 1990, lot 1295

- x623** **Cnut** (1016-35), Penny, 1.12g, Short Cross type variety with title King of York, York, Godman, + CNVT. R EOFE; diademed and draped bust left, lis sceptre in front, *rev.* + GODMAN ON EORC, short voided cross, pellet in centre (Hildebrand 614; BMC 181; SCBI 13 (Copenhagen) 672 same dies; N.790 var.; S.1159 var.), *very fine, rare* £500-600

PROVENANCE:

CNG 70, 21 September 2005, lot 1254

Conte, Triton VI, 14-15 January 2003, lot 1408



624



625



626

- x624** **Harold I** (1035-40), Penny, 1.01g, Fleur de Lis type, Lincoln, Othgrim, + HAROLD RECX, helmeted and armoured bust left, sceptre in front, *rev.* + OÐNRIN ON LNCL, long voided cross with pellet at centre, trefoils of pellets in angles (N.804; S.1164), *from rusty dies, good very fine* £600-800

PROVENANCE:

Purchased from Seaby, March 1989

- x625** **Edward the Confessor** (1042-66), Penny, 1.12g, Radiate type, Canterbury, Manna, + EDPER - D REX A, radiate helmeted and draped bust left, *rev.* + MANNA ONN CENT•; small cross (N.816; S.1173), *slightly bent, peck marks on reverse, very fine* £250-300

PROVENANCE:

Baldwin auction 13, 28 May 1997, lot 1542

- x626** **Edward the Confessor** (1042-66), Penny, 1.05g, Radiate type, Lincoln, Ulfr, + EDP-P REX; radiate helmeted and draped bust left, *rev.* VDFE; ON LINCO, short cross (N.816; S.1173), *the letter P punched from I and O, slightly bent, obverse weak, reverse very fine* £100-150

PROVENANCE:

Baldwin auction 13, 28 May 1997, lot 1604 (part)



627



628



629

- x627** **Edward the Confessor** (1042-66), Penny, 1.06g, Trefoil - Quadrilateral type, London, Wulfsige, helmeted and draped bust left, sceptre in front, *rev.* PVLISIC ON LVND, quadrilateral over small cross, pellets in angles (N.817; S.1174), *good very fine* £250-300

PROVENANCE:

Baldwin auction 13, 28 May 1997, lot 1641

- x628** **Edward the Confessor** (1042-66), Penny, 0.81g, Small Flan type, London, Aegelric, + EDPARDE, helmeted and armoured bust left, *rev.* + AEGELRIC ON LVN, short voided cross (N.818; S.1175), *very fine* £250-300

- x629** **Edward the Confessor** (1042-66), Penny, 0.70g, Small Flan type, London, Durreb, + EDPARDE, helmeted and armoured bust left, *rev.* + DVRREB ON LVN, short voided cross (N.818; S.1175), *surface cracks on reverse, good very fine* £250-300

PROVENANCE:

Purchased from Martin Daniels, June 1990



630



631

- x630** **Edward the Confessor** (1042-66), Penny, 1.45g, Pointed Helmet type, York, Wintefugel, + EDPARDRI, helmeted and armoured bust right, holding pattée sceptre in front, *rev.* + PINETREVGAL ON EO, short voided cross, annulet in fourth quarter (N.825; S.1179), *good very fine* £600-800

PROVENANCE:

Downie's auction, 28 July 1992, lot 795

- x631** **Edward the Confessor** (1042-66), Penny, 1.22g, Sovereign/Eagles type, Canterbury, Edward, EADPEARD REX ANGLO+, king enthroned, crowned, bearded and head turned to right, holding orb and long sceptre, *rev.* EADPEARD O IENE, short voided cross, bird in each angle (BNC 1568 - uncertain; N.827; S.1181), *very fine, rare* £300-350

PROVENANCE:

Purchased from Brisbane Coin Galleries

Elmore Jones, Glendining, 12-13 May 1971, lot 170, 'curiously blundered mint signature, very fine and rare'



632



633

x632

Edward the Confessor (1042-66), Penny, 1.36g, Hammer Cross type, Lewes, Godwine, + EADPER - RDREX, crowned, draped, and bearded bust right, sceptre in front, *rev.* + GODPINE ON LÆPE?., voided short cross with curved ends (N.828; S.1182), *very fine*

£400-500

x633

Edward the Confessor (1042-66), Penny, 1.34g, Pyramids type, Stamford, EADPARD RE, crowned and armoured bust right, sceptre in front, *rev.* GODPINE ON STA, short voided cross, pyramid in each angle (N.831; S.1184), *double struck on reverse, very fine*

£300-400

PROVENANCE:

Spink Australia, 'Racecourse sale', 3 December 1992, lot 488

NORMAN KINGS OF ENGLAND



634



634 (x2)

x634

William I (1066-87), Penny, 1.10g, Bonnet type, 'Maint', Brithwi, + PILLEMIII REXII, crowned, diademed and draped bust facing, *rev.* + BRHTWI ON MAINT, short voided cross, piles in angles (SCBI 20 (Mack) 1359 this coin; N.842; S.1251), *nearly very fine, very rare*

£1,000-1,200

PROVENANCE:

Spink Numismatic Circular, October 1992, no.5955

Mack collection, purchased from Baldwin, 1949

SCBI 20, p.xiii notes 'Several of these coins have been recorded, all from the same dies. The mint is uncertain but the obverse is from the same die as a coin of type 2, Thetford mint, BMC 146.'



635



636



637

x635

William I (1066-87), Penny, 1.24g, Canopy type, Thetford, Godwine, + PILLEMVS REX, crowned and draped bust facing within a canopy of two columns, *rev.* + GODPINE ON DEOTFI, curved quadrilateral, annulet in centre, fleurs at angles (N.843; S.1252), *nearly very fine, scarce*

£600-800

PROVENANCE:

'An Important Collection of Coins of the Thetford Mint', Spink auction 90, 16 March 1992, lot 302

x636

William I (1066-87), Penny, 1.24g, Two Sceptres type, Lincoln, Ulf, + PILEM REX ANG, crowned and draped bust facing, sceptres to left and right, *rev.* + VLF ON LINCOLN, cross fleury over saltire botonnée (N.844; S.1253), *nearly very fine*

£500-600

PROVENANCE:

Glendining, 2 March 1994, lot 12

x637

William I (1066-87), Penny, 1.33g, PAXS type, Chichester, Brunman, crowned and draped bust facing, holding sceptre in left hand, *rev.* + BRVMAN ON CICI, cross pattée, PAXS in angles (N.848; S.1257), *edges weak, fine*

£200-250

PROVENANCE:

Purchased from M Daniels, May 1989



638



639



640

x638

William I (1066-87), Penny, 1.36g, PAXS type, Derby, Godwine, + PILLELM REX, crowned and draped bust facing, holding sceptre in left hand, *rev.* + GODPINE ON DRBI, cross pattée, PAXS in angles (N.848; S.1257), *smoothed and made round, otherwise very fine, very rare*

£600-800

PROVENANCE:

Spink Numismatic Circular, March 1992, no. 877
Elmore Jones, part 2, Glendining, 10 April 1984, lot 1317

x639

William I (1066-87), Penny, 1.42g, PAXS type, Lincoln, Ulf, + PILLELMVS REX, crowned and draped bust facing, holding sceptre in left hand, *rev.* + VLF ON LINCOLN, cross pattée, PAXS in angles (N.848; S.1257), *good very fine*

£400-500

PROVENANCE:

Noble Numismatics auction 65, 15 November 2000, lot 731

x640

William I (1066-87), Penny, 1.25g, PAXS type, St Davids, + PILLELMVS REX, crowned and draped bust facing, holding sceptre in left hand, *rev.* + DEVITVN, cross pattée, PAXS in angles (N.848; S.1257), *very double struck, otherwise fine, very rare*

£200-300

PROVENANCE:

Purchased from Spink, April 1992
Spink Numismatic Circular, February 1998, no. 143, and Spink Numismatic Circular, November 1987, no. 6398 'Unfortunately, coin turned in die during striking, rendering legends virtually indecipherable, otherwise F-VF'



641



642



643

x641

William I (1066-87), Penny, 1.37g, PAXS type, Salisbury, Osbern, + PILLELMVS REX, crowned and draped bust facing, holding sceptre in left hand, *rev.* + OSBERN ON SIERBI, cross pattée, PAXS in angles (N.848; S.1257), *unevenly cleaned, obverse slightly double struck, good fine*

£300-400

PROVENANCE:

Spink Noble auction 38, 18 March 1992, lot 417

x642

William I (1066-87), Penny, 1.40g, PAXS type, Southwark, Aeldoulf, + PILLELMVS REX, crowned and draped bust facing, holding sceptre in left hand, *rev.* + IELDOULF ON SVDE, cross pattée, PAXS in angles (N.848; S.1257), *nearly very fine*

£250-300

PROVENANCE:

Noble Numismatics auction 86, 21 November 2007, lot 781

R Cullum collection, purchased from Seaby, April 1945

x643

William I (1066-87), Penny, 1.40g, PAXS type, Southwark, Lifwold, + PILLELMVS REX, crowned and draped bust facing, holding sceptre in left hand, *rev.* + LIFPORD ON SVD, cross pattée, PAXS in angles (N.848; S.1257), *very fine*

£300-400

PROVENANCE:

Classical Numismatic Auctions, October 1991, lot 5



644



645



646

x644

William I (1066-87), Penny, 1.37g, PAXS type, + Wallingford, Aegelwine, PILLELMVS REX, crowned and draped bust facing, holding sceptre in left hand, *rev.* + IEGLPINE ON PAL, cross pattée, PAXS in angles (N.848; S.1257), *very fine*

£400-500

PROVENANCE:

Purchased from Colonial Rare Coins, January 1991

x645

William I (1066-87), Penny, 1.33g, PAXS type, Wilton, Aelfwine, + PILLELMVS REX, crowned and draped bust facing, holding sceptre in left hand, *rev.* + IELFPINE ON PITII, cross pattée, PAXS in angles (N.848; S.1257), *very fine, scarce*

£500-600

PROVENANCE:

Noble Numismatics auction 65, 15 November 2000, lot 732

x646

William I (1066-87), Penny, 1.36g, PAXS type, Wilton, Sewine, + PILLELMVS REX, crowned and draped bust facing, holding sceptre in left hand, *rev.* + SEPINE ON PILTN, cross pattée, PAXS in angles (N.848; S.1257), *very fine, scarce*

£500-600

PROVENANCE:

CNG auction 17, 5 October 1991, lot 393



647



648

x647

William I (1066-87), Penny, 1.39g, PAXS type, Winchester, Leofwold, + PILLELMVS REX, crowned and draped bust facing, holding sceptre in left hand, *rev.* + LIIFOLD ON PINC, the NC ligate, cross pattée, PAXS in angles (N.848; S.1257), *nearly very fine*

£300-400

PROVENANCE:

Christie's, 8 October 1991, lot 764 pt.

x648

William I (1066-87), lead token 'Penny', profile right type (as BMC VII and S.1256), struck in lead 1.90g, as either a trial or as a token piece, *legends unclear otherwise nearly very fine, very rare*

£150-200

PROVENANCE:

W J Noble collection, Noble Numismatic auction 61, 3-4 August 1999, lot 166
Purchased from Dolphin Coins in 1988



649



649 (x2)



x649

William II (1087-1100), Penny, 1.40g, Cross in Quatrefoil type, Wallingford, Colbern, + PILLEM RE, crowned and draped bust facing, holding sword over right shoulder, *rev.* + COLBERN ON PAL, quatrefoil with pellet at each angle, enclosing cross pattée with annulet at centre (N.852; S.1259), *very fine*

£1,500-2,000

PROVENANCE:

Purchased from Jaggards, February 1999



650



650 (x2)



x650

William II (1087-1100), Penny, 1.29g, Cross Pattée and Fleury type, London, Aelfwine, + PILLELM RE, crowned and draped bust facing, holding sword over right shoulder, *rev.* + IELPINE ON LVN, cross pattée, fleurs de lis in angles (N.855; S.1261), *good fine*

£800-1,200

PROVENANCE:

Coin Galleries, 15 November 1989, lot 1096



651



651 (x2)

x651

Henry I (1100-35), Penny, 1.215g, Profile/Cross Fleury type, Thetford, Godric, + HENRI RI, crowned and draped bust left, *rev.* + GODRIC ON ÐTFR, cross fleury with annulet at centre (BMC p.ccxlii this coin; RAGC 5 this coin; N.858; S.1263A), *very fine, extremely rare, the only recorded specimen of the moneyer for this type*

£1,000-1,200

PROVENANCE:

'An Important Collection of Coins of the Thetford Mint', Spink auction 90, 16 March 1992, lot 313

Mack, part II, Glendining, 23 March 1977, lot 248

Ryan, Glendining, 22 January 1952, lot 899

Rashleigh, Sotheby, 21 June - 1 July 1909, lot 466

Tyssen, Leigh-Sotheby, April - May 1802, lot 1108



652



652 (x2)

x652

Henry I (1100-35), Penny, 0.98g, Annulet and Piles type, Ipswich, Aelfric, + HENRIC RE, crowned and draped bust facing, *rev.* IELFRIC ON GIP, four annulets between four piles (N.860; S.1265), *weakly struck in parts, especially the bust, otherwise very fine and extremely rare, the only known example of the type from this mint*

£600-800

PROVENANCE:

Patrick Finn list 1, Spring 1994, no. 51

Spink Numismatic Circular, February 1993, no. 137

William Conte collection, purchased from Spink



653

x653

Henry I (1100-35), cut Halfpenny, 0.53g, Voided Cross and Fleurs type, London Algar?, crowned bust facing, sceptre over right shoulder (star in left field not visible), *rev.* voided cross pattée, voided trefoil in each angle (N.861; S.1266), *very fine, rare*

£100-150

PROVENANCE:

Purchased from Joe Bispham, January 1993



654

x654

Henry I (1100-35), Penny, 1.34g, Quatrefoil with Piles type, London, Sperling, + HENRI REX, crowned and draped bust facing, *rev.* + SPIR[...] ON LVNDEN, quatrefoil with piles in angles (SCBI 20 (Mack) 1521 this coin; N.863; S.1268), *edge officially incised, off centre, good fine, rare*

£600-800

PROVENANCE:

Pheatt, BDW, 21 March 1995, lot 683

Mack collection, purchased from Spink 1954



655

x655

Henry I (1100-35), Penny, 1.35g, Full Face/Cross Fleury type, Lincoln, Wulfiet, + HENRICVS REX AN, crowned and draped bust facing, *rev.* [...]FIET : ON L[...], cross fleury with annulet in centre (Mossop -; N.866; S.1271), *edge officially incised, legends half flat, otherwise fine, rare*

£600-800

PROVENANCE:

Pheatt, BDW, 21 March 1995 lot 685

Beauvais hoard, Glendining, 4 November 1987, lot 3



656

x656

Henry I (1100-35), Penny, 1.288g, Full Face/Cross Fleury type, London, Sigar, + HENRICVS REX AN, crowned and draped bust facing, *rev.* + SIGAR : ON LVN:, cross fleury, annulet at centre (N.866; S.1271), *edge officially incised, fine, rare*

£250-300

PROVENANCE:

Spink Numismatic Circular, December 1992, no. 7444

The Circular states 'ex Mansfield Woodhouse hoard.'



657

x657

Henry I (1100-35), Penny, 1.278g, Full Face/Cross Fleury type, Thetford, Aschetil, + HENRICVS REX AN, crowned and draped bust facing, *rev.* + ASCH[ET]IL ON : TET:, cross fleury, annulet at centre (RAGC 15; N.866; S.1271), *only fine but very rare*

£400-500

PROVENANCE:

'An Important Collection of Coins of the Thetford Mint', Spink auction 90, 16 March 1992, lot 316



658

x658

Henry I (1100-35), Penny, 1.26g, Double Inscription type, London, Sperling, crowned and draped bust left, holding sceptre, trefoil of pellets on drapery and two quatrefoils of annulets in front, *rev.* outer inscription divided by four quatrefoils, [...]ERLIG ON [L]VND, inner inscription, + LVNDEN, cross pattée in centre (Harris SCMB 0985, p.41 - quoting this coin; N.867; S.1272), *officially incised at edge, obverse almost flat, reverse fair to fine, very rare*

£300-400

PROVENANCE:

Pheatt, BDW, 21 March 1995, lot 686

Glendining, 9 July 1986, lot 276

Parsons, part II, Glendining, 11 May 1954, lot 244



659



660



661

x659

Henry I (1100-35), Penny, 1.24g, Double Inscription type, Southwark, Lifinc, crowned and draped bust left, holding sceptre, trefoil of pellets on drapery and two quatrefoils of annulets in front, *rev.* outer inscription divided by four quatrefoils, L[...]PI[]SVTP[]R, inner inscription, + LVNDEN, cross pattée in centre (N.867; S.1272), *surface cracks and other surface marks, officially incised at edge, very fine*

£400-500

PROVENANCE:

Glendining, 2 March 1994, lot 14

x660

Henry I (1100-35), Penny, 0.867g, Small Profile/Cross and Annulets type, Sandwich, Godric, + HEN[RI]CVS R., crowned and draped bust left, rosette in front, *rev.* [G]ODRICVS ON SA, cross pattée, annulets in angles (N.868; S.1273), *on a small, irregular flan, edge incision, good portrait, one annulet on the reverse very clear, the others flat, fine, of the highest rarity, the only known example of the type from this mint*

£500-600

PROVENANCE:

Spink Numismatic Circular, February 1992, no. 146

Spink Numismatic Circular, May 1989

Found at the Thames Exchange excavations, 1989

x661

Henry I (1100-35), Penny, 1.24g, Star in Lozenge Fleury type, Bury St Edmunds, Godric, + HENRICVS R, crowned and draped bust left, holding sceptre, *rev.* GODRIC ON S EDM, quadrilateral cross fleury, star in centre, annulets in angles (N.869; S.1274; Lockett 3910 same dies), *surfaces rough, reverse a little weak, otherwise good fine/about fine, rare*

£800-1,000

PROVENANCE:

Spink Numismatic Circular, December 1991, no. 7989



662



663

x662

Henry I (1100-35), Penny, 1.38g, Star in Lozenge Fleury type, 1.377g, Thetford, Godwine, + HENRICVS R, crowned and draped bust left, holding sceptre, *rev.* GODPINE : ON : TETFO..., quadrilateral cross fleury, star in centre, annulets in angles (N.869; S.1274), *the edge incision enlarged into a very small chip, slightly bent otherwise very fine, very rare*

£500-600

PROVENANCE:

Spink auction 80, 16 March 1992, lot 317

The previous catalogue notes 'The moneyer only recorded for the type from the Lincoln hoard.'

x663

Henry I (1100-35), Penny, 1.38g, Pellets in Quatrefoil type, London, Aelfwine Sultan, HENRICVS: RE:, crowned and draped bust facing, sceptre to left, star to right, *rev.* AL[]NSVL : ON : LVN, quatrefoil with star at centre and pellets on limbs, lis in angles (N.870; S.1275), *edge officially incised, a little off centre otherwise extremely fine, very rare*

£400-500

PROVENANCE:

Spink auction 82, 27 March 1991, lot 103



x664

Henry I (1100-35), Penny, 1.35g, Quatrefoil on Cross Fleury type, London, Ordgar, HENRICVS:, crowned and draped bust facing slightly left, sceptre to left, *rev.* ORDGAR : ON : LVNDE:, quatrefoil over cross fleury with pellets in angles (N.871; S.1276), *left side of portrait weak, good fine*

£100-150

PROVENANCE:

Spink Australia auction 32, 31 May 1990, lot 343

x665

Henry I (1100-35), Penny, 1.39g, Quatrefoil on Cross Fleury type, London, Rogier, + HENRICVS:, crowned and draped bust facing slightly left, sceptre in right hand, *rev.* ROGIER ON LVNDE:, quatrefoil over cross fleury with pellets in angles (N.871; S.1276), *flan buckled, good fine*

£150-200

PROVENANCE:

Stack's, 15 October 1989, lot 1098



666



666 (x2)

x666

Henry I (1100-35), Halfpenny, 0.52g, Sandwich, Adalbot, + HENR[...] REX, bust facing, *rev.* ADALBOT MON S, cross potent, pellets in angles (N.872; S.1277), *officially incised, a small chip at 2 o'clock, otherwise nearly extremely fine, extremely rare, the only example known*

£3,000-4,000

PROVENANCE:

St James's auction 5, 27 September 2006, lot 123

W Conte collection

North notes round Halfpennies, all of this type, from six mints, Hereford, No (Norwich ?), Oxford, Wallingford, Winchester and York (North 872). This coin adds Sandwich to the list. One other round Halfpenny is known, a curious mule, also by Adalbot at Sandwich, using this obverse die and a type IX, cross in quatrefoil, Penny reverse die (North 872/1). 'The knowledge of only a single obverse and reverse design type for the Henry I halfpence, their stylistic uniformity, and their extreme rarity, all point to an issue of limited duration.' Conte and Archibald, 'Five Round Halfpennies of Henry I' in SNC September 1990, pp. 232-236

Substantive Royal Issues

Type 1, Cross Moline



667

x667

Stephen (1135-54), Penny, 1.13g, Cross Moline ('Watford') type, Bury St Edmunds, Acelin, crowned and diademed bust right, holding sceptre in right hand, *rev.* A[...], cross moline, fleur in each angle (Eaglen 34 B606 this coin, dies Aa; Mack 5a; N.873; S.1278), *flat areas on obverse and a hairline crack, otherwise fine*

£200-250

PROVENANCE:

'A Collection of coins from the mint of Bury St Edmunds', DNW, 28 September 2006, lot 372

Beauvais hoard, Glendining, 14 November 1987, lot 101



668

x668

Stephen (1135-54), Penny, 1.38g, Cross Moline ('Watford') type, Canterbury, Wulfvane, crowned and diademed bust right, holding sceptre in right hand, *rev.* PULFWINE: ON: CAN, cross moline, fleur in each angle (Mack 6g; N.873; S.1278), *surface cracks but a good portrait, fine*

£200-300

PROVENANCE:

Purchased from Baldwin, May 1992



669

x669

Stephen (1135-54), Penny, 1.39g, Cross Moline ('Watford') type, Chester, Ravenswort, crowned and diademed bust right, holding sceptre in right hand, *rev.* [RA]VENSPERT: O[N: CE], cross moline, fleur in each angle (Mack 9b; N.873; S.1278), *off-center and flat in parts, otherwise good fine*

£200-300

PROVENANCE:

Stack's, 29 November 1990, lot 1404

Possibly Prestwich hoard



670

x670

Stephen (1135-54), Penny, 1.39g, Cross Moline ('Watford') type, Chichester, Goodwin, crowned and diademed bust right, holding sceptre in right hand, *rev.* GODPINE: ON: CICE, cross moline, fleur in each angle (Mack 10; N.873; S.1278), *nearly fine*

£150-200

PROVENANCE:

Purchased from Baldwin, May 1992

Prestwich hoard, Glendining, 3 September 1975, lot 246



671

x671

Stephen (1135-54), Penny, 1.18g, Cross Moline ('Watford') type, Colchester, Edward, crowned and diademed bust right, holding sceptre in right hand, *rev.* [ED]PARD: ON: COL[...], cross moline, fleur in each angle (Mack 11b; N.873; S.1278), *good*

£150-200

PROVENANCE:

St James's auction 3, 3 October 2005, lot 115

Sotheby, October 1971



672

x672

Stephen (1135-54), Penny, 1.42g, Cross Moline ('Watford') type, Hastings, Rodbert, crowned and diademed bust right, holding sceptre in right hand, *rev.* RODB[E]RT: ON: h[A], cross moline, fleur in each angle (Mack 15a; N.873; S.1278), *fine*

£150-200

PROVENANCE:

Purchased from Baldwin, May 1992

Prestwich hoard, Glendining, 3 September 1975, lot 248



- x673** **Stephen** (1135-54), Penny, 1.39g, Cross Moline ('Watford') type, Hereford, Sibern, crowned and diademed bust right, holding sceptre in right hand, *rev.* SIBE[RN :]O[:]
HER[E], cross moline, fleur in each angle (Mack 16a; N.873; S.1278), *dished, flat in parts, very fine* £300-400
- PROVENANCE:
DNW, 28 September 2006, lot 540
- x674** **Stephen** (1135-54), Penny, 1.11g, Cross Moline ('Watford') type, Lincoln, Gladwine, crowned and diademed bust right, holding sceptre in right hand, *rev.* GLA[DP]IN[E :O]N:
LI, cross moline, fleur in each angle (Mack 21b variety, Mack only notes NICO for this moneyer; N.873; S.1278), *edges flat, nearly fine* £100-150
- PROVENANCE:
Purchased from Baldwin, May 1992
- x675** **Stephen** (1135-54), Penny, 1.47g, Cross Moline ('Watford') type, London, Alfred, crowned and diademed bust right, holding sceptre in right hand, *rev.* ALFRED[:]
ON: LVN, cross moline, fleur in each angle (Mack 22b; N.873; S.1278), *old dark tone, square edge to flan, good fine* £300-400
- PROVENANCE:
St James's auction 3, 3 October 2005, lot 122
Lord Grantley, Glendining, 20 April 1944, lot 1289
Rashleigh, Sotheby, 21 June 1909, lot 531
From the Watford hoard, 1818



- x676** **Stephen** (1135-54), Penny, 1.56g, Cross Moline ('Watford') type, London (?), Godric (?), crowned and diademed bust right, holding sceptre in right hand, *rev.* []vs: on: [], cross moline, fleur in each angle (Mack 22k; N.873; S.1278), *fair* £100-150
- PROVENANCE:
Superior auction, 11 December 1992, lot 1404
- x677** **Stephen** (1135-54), Penny, 1.18g, Cross Moline ('Watford') type, Norwich, Hermer, crowned and diademed bust right, holding sceptre in right hand, *rev.* HER[ME]R: ONNO:, cross moline, fleur in each angle (Mack 24-; N.873; S.1278), *off-centre, nearly very fine* £200-250
- PROVENANCE:
Wickelwood hoard, Christie's, 15 May 1990, lot 18
- x678** **Stephen** (1135-54), Penny, 1.39g, Cross Moline ('Watford') type, Norwich, Swetman, crowned and diademed bust right, holding sceptre in right hand, *rev.* [S]PEDMAN ON
N[OR], cross moline, fleur in each angle (Mack 24l; N.873; S.1278), *fine* £100-150
- PROVENANCE:
Purchased from Baldwin, May 1992



x679

Stephen (1135-54), Penny, 1.31g, Cross Moline ('Watford') type, Richmond, Bertold, crowned and diademed bust right, holding sceptre in right hand, *rev.* [B]ERTOL[D: ON RI], cross moline, fleur in each angle (Mack 8 but attributed to Castle Rising; N.873; S.1278), *off-centre and one side flat, nearly fine*

£150-200

PROVENANCE:

Purchased from Baldwin, May 1992

x680

Stephen (1135-54), Penny, 1.42g, Cross Moline ('Watford') type, Salisbury, Stanung, crowned and diademed bust right, holding sceptre in right hand, *rev.* [STAN]G[HV]N: ON: SA, cross moline, fleur in each angle (Mack 29; N.873; S.1278), *very good, very rare*

£150-200

PROVENANCE:

Mossop, Glendining, 6 November 1991

Elmore Jones, Glendining, 13 April 1983, lot 1096

'fair, extremely rare mint of the reign (two in the South Kyme hoard and three in the Prestwich hoard)'



x681

Stephen (1135-54), Penny, 1.33g, Cross Moline ('Watford') type, Shaftsbury, Sagrim, crowned and diademed bust right, holding sceptre in right hand, *rev.* SA[...], cross moline, fleur in each angle (Mack 30b; N.873; S.1278), *double-struck, fair*

£50-100

PROVENANCE:

Colonial Rare Coins auction, 6 February 1992, lot 1477

x682

Stephen (1135-54), Penny, 1.28g, Cross Moline ('Watford') type, Southwark, Alfwine, crowned and diademed bust right, holding sceptre in right hand, *rev.* ALPIN[E: ON:S]VD, cross moline, fleur in each angle (Mack 32a; N.873; S.1278), *very good*

£100-150

PROVENANCE:

Purchased from Baldwin, May 1992

Albert Baldwin collection

x683

Stephen (1135-54), Penny, 1.33g, Cross Moline ('Watford') type, Southwark, Wulfwold, crowned and diademed bust right, holding sceptre in right hand, *rev.* PVL[FPO]LD: ON: SV:, cross moline, fleur in each angle (Mack 32c; N.873; S.1278), *numerous surface cracks, very good*

£80-120

PROVENANCE:

Purchased from Baldwin, May 1992



684



685

x684

Stephen (1135-54), Penny, 0.92g, Cross Moline ('Watford') type, S?, Godfrey, crowned and diademed bust right, holding sceptre in right hand, *rev.* [GODFREI: O]N: S, cross moline, fleur in each angle (Mack - ; N.873; S.1278), *obverse off-centre and much of the legends flat, fine, rare*

£150-200

PROVENANCE:

St James's auction 3, 3 October 2005, lot 131
Beauvais hoard, Glendining, November 1987, lot 131

The reverse die reading is established from a die duplicate in the lot from the Beauvais hoard cited above. The mint remains uncertain since the moneyer Godfrey is otherwise unknown at the period.

x685

Stephen (1135-54), Penny, 1.43g, Cross Moline ('Watford') type, Thetford, Baldwin, crowned and diademed bust right, holding sceptre in right hand, *rev.* BALDEPIN: ON: TETE:, cross moline, fleur in each angle (Mack 37a; RAGC 1; N.873; S.1278), *a full clear portrait, very fine*

£300-400

PROVENANCE:

'An Important Collection of Coins of the Thetford Mint', Spink auction 90, 16 March 1992, lot 320



686



687



688

x686

Stephen (1135-54), Penny, 1.39g, Cross Moline ('Watford') type, Thetford, Robert A, crowned and diademed bust right, holding sceptre in right hand, *rev.* ROBERT: A: ON: TE:, cross moline, fleur in each angle (Mack 37; N.873; S.1278), *about very fine, rare*

£500-600

PROVENANCE:

'An Important Collection of Coins of the Thetford Mint', Spink auction 90, 16 March 1992, lot 323
Prestwich hoard, Sotheby, 6 December 1974, lot 80

'This coin is of some importance in that not only is the moneyer previously unrecorded but the practice of adding the initial of the moneyer's surname is virtually unknown as early as the reign of Stephen (the exception being Tierri D of London striking Pennies of type 2). Surname initials or abbreviations were used more commonly in the 'Tealby' and 'Short Cross' coinages of Henry II, Richard I, John and Henry III, in order to distinguish between two moneyers of the same name in the same town.' For coins of Tierri D see lots 692 and 701

x687

Stephen (1135-54), Penny, 1.37g, Cross Moline ('Watford') type, Warwick?, crowned and diademed bust right, holding sceptre in right hand, *rev.* []ON: PA[], cross moline, fleur in each angle (N.873; S.1278), *fair*

£50-100

PROVENANCE:

Purchased from Baldwin, May 1992

x688

Stephen (1135-54), Penny, 1.37g, Cross Moline ('Watford') type, Wilton, Falche, crowned and diademed bust right, holding sceptre in right hand, *rev.* [F]ALCHE: ON: PILTVN, cross moline, fleur in each angle (Mack 39a; N.873; S.1278), *good fine/fine, rare*

£250-350

PROVENANCE:

Format list 44, October 1991



- x689** **Stephen** (1135-54), Penny, 1.40g, Cross Moline ('Watford') type, Winchester, Roger, crowned and diademed bust right, holding sceptre in right hand, *rev.* ROGIRVS: ON: [PI]N:, cross moline, fleur in each angle (Mack 40d; N.873; S.1278), *fine* £100-150

PROVENANCE:
Purchased from Baldwin, May 1992

Type 2, Cross and Mullets

- x690** **Stephen** (1135-54), Penny, 1.37g, Voided Cross and Mullets type, Bury St Edmunds, Hunfrei, + STEFNE, crowned bust three-quarters left, holding sceptre in right hand, *rev.* hvNFREI: ON: S: ED, plain cross voided with a mullet in each angle (Eaglan 41, B057 this coin; Mack 54a; N.878; S.1280), *flat in centres but full clear legends both sides, very fine* £200-300

PROVENANCE:
DNW, 28 September 2006, lot 381
Drabble, part 1, Glending, 4 July 1939, lot 703
Carlyon-Britton, part 2, Sotheby, 20-24 November 1916, lot 1469



- x691** **Stephen** (1135-54), Penny, 1.39g, Voided Cross and Mullets type, Ipswich, Osbern?, crowned bust three-quarters left, holding sceptre in right hand, *rev.* [O?]: ON: GIP, plain cross voided with a mullet in each angle (Mack 59e; N.878; S.1280), *good fine* £300-400

PROVENANCE:
Spink Numismatic Circular, March 1991

- x692** **Stephen** (1135-54), Penny, 1.41g, Voided Cross and Mullets type, London, Tierri D, + STIEFNE, crowned bust three-quarters left, holding sceptre in right hand, *rev.* TIE[RRI]D: ON: LVN, plain cross voided with a mullet in each angle (Mack 61f; N.878; S.1280), *reverse a little off-centre, very fine, very rare* £400-500

PROVENANCE:
Spink Numismatic Circular, 13 February 1992, no.148

A rare instance of the moneyer signing with an additional letter, presumably the initial of his surname, a practice that only becomes widespread under the Angevins. For a Cross and Piles Penny of Tierri D see lot 701. The other rare example of this in the reign of Stephen is the moneyer Robert A at Thetford (see lot 686)

- x693** **Stephen** (1135-54), Penny, 1.31g, Voided Cross and Mullets type, Norwich. Ailward, crowned bust three-quarters left, holding sceptre in right hand, *rev.* AI[LW]A[RD: ON:N]OR, plain cross voided with a mullet in each angle (Mack 62-; N.878; S.1280), *slightly crinkled at edges but nearly very fine* £200-300

PROVENANCE:
Spink Numismatic Circular, April 1991, no. 1838
Wicklewood hoard, Christie's, 15 May 1990, lot 51



x694

Stephen (1135-54), Penny, 1.40g, Voided Cross and Mullets type, Norwich, Rogier, crowned bust three-quarters left, holding sceptre in right hand, *rev.* ROGIER: ON: NO[], plain cross voided with a mullet in each angle (Mack 62; N.878; S.1280), *flan badly creased, good - very good*

£100-150

PROVENANCE:

Mossop, Glendining, 6 November 1991, lot 435
Doubleday, Glendining, 8 June 1988, lot 788

x695

Stephen (1135-54), Penny, 1.23g, Voided Cross and Mullets type, Thetford, Baldwin, crowned bust three-quarters left, holding sceptre in right hand, *rev.* BALDWIN: ON: TE:, plain cross voided with a mullet in each angle (RAGC 6 this coin; Mack 66a; N.878; S.1280), *slightly creased, surfaces rough, nearly fine*

£400-500

PROVENANCE:

'An Important Collection of Coins of the Thetford Mint', Spink auction 90, 16 March 1992, lot 324
Drabble, part 1, Glendining, 4 July 1939, lot 706

The Spink catalogue also lists O'Brien Hubbard and B Nottingham collections.



Type 6, Cross and Piles

x696

Stephen (1135-54), Penny, 0.91g, Profile/Cross and Piles type, Dunwich, Henri, crowned bust left, holding sceptre in front, *rev.* + HENRI [:ON:D]VNE, cross fleury with a pile surmounted by a trefoil of annulets in each angle (Mack - ; N.879; S.1281), *some verdigris, good fine*

£300-400

PROVENANCE:

Purchased from Baldwin, May 1992
Wicklewood hoard, Christie's, 15 May 1990, lot 94

x697

Stephen (1135-54), Penny, 1.22g, Profile/Cross and Piles type, Lewes, Hunfrei, crowned bust left, holding sceptre in front, *rev.* + HVN[FREI O]N LEV, cross fleury with a pile surmounted by a trefoil of annulets in each angle (Mack 85 this coin; N.879; S.1281), *broken and repaired, good, rare*

£150-200

PROVENANCE:

Purchased from York Coins, November 2010, H4255
Wills, Glendining, 6-8 December 1938, lot 303, 'fine, a type of great rarity but has been repaired'
Reynolds, Sotheby, 5 June 1919, lot 60, 'very rare but broken and repaired'

x698

Stephen (1135-54), Penny, 1.34g, Profile/Cross and Piles type, London, Alsandre (or Raulf?), +[ST]IEFNE, crowned bust left, holding sceptre in front, *rev.* + [...AVL?...] ON L[VN?], cross fleury with a pile surmounted by a trefoil of annulets in each angle (Mack 86/88- ; N.879; S.1281), *reverse off centre, fair, with a clear portrait*

£200-300

PROVENANCE:

Lawrence Stack, Sotheby, 22-23 April 1999, lot 673, as Raulf?



699



700

x699

Stephen (1135-54), Penny, 1.29g, Profile/Cross and Piles type, London, Rawulf, crowned bust left, holding sceptre in front, *rev.* + R[] ON LVN, cross fleury with a pile surmounted by a trefoil of annulets in each angle (Mack 88 (this coin?); N.879; S.1281), *very good, reverse better*

£200-300

PROVENANCE:

Spink Numismatic Circular, September 1991, no. 5534
David Dupree collection, sold through Spink in 1980s

x700

Stephen (1135-54), Penny, 1.41g, Profile/Cross and Piles type, London or Canterbury, Rodbert, + STIEFN[E], crowned bust left, holding sceptre in front, *rev.* + RODBERT: ON [...]N, cross fleury with a pile surmounted by a trefoil of annulets in each angle (N.879; S.1281), *dark tone, flat in part but about very fine*

£600-800

PROVENANCE:

Baldwin auction, 4 June 2016, lot 304
David Sellwood collection

Lockett, part IV, Glendining, 26 April 1960, lot 3941 'ON LVN or possibly CAN'
Rashleigh, Sotheby, 21-28 June 1909, lot 619, illustrated on pl.IX, listed under 'rare varieties and types' and described as 'fine and of the highest rarity' £9.0.0.
Cuff, Sotheby, 8 June 1854, lot 762, 'in good preservation and rare', £1.0.0. to Rashleigh

It is droll to note that while this coin realised £9.0.0. in the Rashleigh sale, lot 1024 in the same sale, a Charles II Five-Guineas, 1670, 'extremely fine', realised £7.15.0.



701



702

x701

Stephen (1135-54), Penny, 1.48g, Profile/Cross and Piles type, London, Tierri D, crowned bust left, holding sceptre in front, *rev.* + T[IE]RRI:D::ONLVN, cross fleury with a pile surmounted by a trefoil of annulets in each angle (Mack 86 ; N.879; S.1281), *good fine, rare*

£400-500

PROVENANCE:

Glendining, 8 September 1993, lot 480
Wicklewood hoard, Christie's, 15 May 1990, lot 109

For a Cross and Mullets Penny by the same moneyer see lot 692.

x702

Stephen (1135-54), Penny, 1.25g, Profile/Cross and Piles type, London, Wulfwine, crowned bust left, holding sceptre in front, *rev.* + PVLPIN[:ON:LVN], cross fleury with a pile surmounted by a trefoil of annulets in each angle (Mack 87; N.879; S.1281), *good fine*

£400-500

PROVENANCE:

Classical Numismatic Auctions, 9 April 1992, lot 1213
Stack's, 9 December 1991, lot 1084
Found in 1991



703



703 (x2)

x703

Stephen (1135-54), Penny, 1.32g, Profile/Cross and Piles type, Norwich, Hildebran, + STIEFN - E, crowned bust left, holding sceptre in front, *rev.* + HILDEBRAN: ON NO, cross fleury with a pile surmounted by a trefoil of annulets in each angle (Mack 89 this coin; SCBI 30 (America) 783 this coin; N.879; S.1281), *very fine, one of the finest known examples of this rare type*

£800-1,000

PROVENANCE:

Lawrence Stack, Sotheby, 22-23 April 1999, lot 674
 Lovejoy, Stack's, 2-3 December 1997, lot 1459
 Dresser, Stack's, 4 May 1995, lot 2260
 Ryan, part 2, Glendining, 22-24 January 1952, lot 917
 Found in Navestock churchyard, Essex



704



704 (x2)

x704

Stephen (1135-54), Penny, 1.22g, Profile/Cross and Piles type, Norwich, Jordan, crowned bust left, holding sceptre in front, *rev.* + [IOR]DAN: ON: NOR, cross fleury with a pile surmounted by a trefoil of annulets in each angle (Mack - ; N.879; S.1281), *irregular flan and reverse off-centre, but otherwise very fine, an excellent specimen with a good bust*

£800-1,000

PROVENANCE:

Patrick Finn list 2, Summer 1994, no. 62
 Wickelwood hoard, Christie's, 15 May 1990, lot 116



x705

Stephen (1135-54), Penny, 1.49g, Profile/Cross and Piles type, Norwich, Thor, + STIEFNE, crowned bust left, holding sceptre in front, *rev.* + THOR: ON: NORPI, cross fleury with a pile surmounted by a trefoil of annulets in each angle (Mack 91; N.879; S.1281), *very fine*

£800-1,000

PROVENANCE:

Spink Numismatic Circular, March 1992, no. 883
Wicklewood hoard, Christie's, 15 May 1990, lot 121



x706

Stephen (1135-54), Penny, 1.23g, Profile/Cross and Piles type, Norwich, Willem, crowned bust left, holding sceptre in front, *rev.* + PILLME: ON: NOR, cross fleury with a pile surmounted by a trefoil of annulets in each angle (Mack 90; N.879; S.1281), *flan split, good fine*

£600-800

PROVENANCE:

Spink Numismatic Circular, 16 October 1991, no. 6508

Available now on iOS and Android.

Download on the
App Store

GET IT ON
Google Play

SPINK LIVE

‘Spink Live’ is now running on a new and improved bidding platform.

Accessible online through www.spink.com and also as an App for mobiles and tablets.

Bidding on ‘Spink Live’ remains **free of charge**.



707



707 (x2)

Type 7, Cross Pommée**x707**

Stephen (1135-54), Penny, 1.02g, Cross Pommée (Awbridge) type, Bedford, Iohan, crowned and bearded bust three-quarters left, holding sceptre in right hand, *rev.* + IOH[A]N[: ON: B]EDE, voided cross within beaded quatrefoil, a fleur in each angle springing from the quatrefoil (Mack 100 but the moneyer not listed; N.881; S.1282), *obverse not struck up and about fine, reverse better and very fine although weak in parts, a great rarity, only the second known of this type for the mint*

£1,000-1,200

PROVENANCE:

Patrick Finn list 12, Spring 1998, no. 82, £1,250

Patrick highlighted this coin in the introduction to his list, and included the following note. 'The best collection of coins of the Bedford mint was owned by Nicholas T Bagshawe; it consisted of 66 pieces which he inherited from his father. The coins were catalogued privately for him by Mr Elmore Jones, and were sold on commission by Spink in 1970. Some were sold to prominent collectors, and I can recall that 9 or 10 pieces were sold to the Bedford Museum. One piece that was sold to Elmore Jones was a type 7 by the moneyer tomas and that coin realised £1,600 whan Elmore's collection was sold in 1983 (13 April lot 1103). The residue of 46 pieces were offered through SNC in December 1971. Interestingly Bagshawe had only three coins of the Bedford mint from the reign of Stephen, two were of type 6 and one of type 7. It is worth noting that there are no Bedford coins from the reign of Stephen listed in the SCBI volumes, and type VII is not represented in the BM collection for Bedford.'



708

x708

Stephen (1135-54), Penny, 1.37g, Cross Pommée (Awbridge) type, Bury St Edmunds, Acel, + STI[EFN]E, crowned and bearded bust three-quarters left, holding sceptre in right hand, *rev.* ACE: ON: S: [ED]MV:, voided cross within beaded quatrefoil, a fleur in each angle springing from the quatrefoil (Eaglen 468, B411 this coin; Mack 102b; N.881; S.1282), *a little off-centre, cracked along collar below bust, otherwise very fine, rare*

£400-500

PROVENANCE:

DNW, 28 September 2006, lot 384
SCMB October 1985, E379



709



710

x709

Stephen (1135-54), Penny, 1.29g, Cross Pommée (Awbridge) type, Canterbury, Edward, crowned and bearded bust three-quarters left, holding sceptre in right hand, *rev.* [EDP]ARD: ON: CAN, voided cross within beaded quatrefoil, a fleur in each angle springing from the quatrefoil (Mack 103a; N.881; S.1282), *edge a little ragged and reverse off centre, fine, rare*

£250-300

PROVENANCE:

Purchased from Baldwin, May 1992

Spink auction 64, 23 June 1988, lot 198

Elmore Jones, part 2, Glendining, 10 April 1984, lot 1396

Reynolds, Sotheby, 5-6 June 1919, lot 64a

x710

Stephen (1135-54), Penny, 0.93g, Cross Pommée (Awbridge) type, Lewes, Hunfrei, + S[TIE]FNE, crowned and bearded bust three-quarters left, holding sceptre in right hand, *rev.* hvNFR[EI]: ON: L[E]V, voided cross within beaded quatrefoil, a fleur in each angle springing from the quatrefoil (Mack 115; N.881; S.1282), *lightly tooled, fine*

£250-300

PROVENANCE:

Purchased from Baldwin, May 1992



711



712

x711

Stephen (1135-54), Penny, 1.36g, Cross Pommée (Awbridge) type, London, Alisandre, + STIE[FNE], crowned and bearded bust three-quarters left, holding sceptre in right hand, *rev.* ALISA[]E: ON: LV, voided cross within beaded quatrefoil, a fleur in each angle springing from the quatrefoil (Mack 117b; N.881; S.1282), *good fine*

£250-300

PROVENANCE:

Pheatt, BDW, 21 March 1995, lot 723

Wicklewood hoard, Christie's, 15 May 1990, lot 135

x712

Stephen (1135-54), Penny, 1.21g, Cross Pommée (Awbridge) type, Norwich, Thor, + STIEFNE, crowned and bearded bust three-quarters left, holding sceptre in right hand, *rev.* [...] ON: NOR[PI], voided cross within beaded quatrefoil, a fleur in each angle springing from the quatrefoil (SCBI 20 (Mack) 1623 this coin; N.881; S.1282), *very good*

£250-300

PROVENANCE:

Purchased from Spink, April 1992

Mack collection Parsons, Glendining, 11-13 May 1954, lot 257

The moneyer's name is not readable on this piece, but it is noted in SCBI 'From the same dies as a coin Seaby had in 1969 with full reading'



713

x713

Stephen (1135-54), Penny, 1.46g, Cross Pommée (Awbridge) type, Sandwich, Wulfre, crowned and bearded bust three-quarters left, holding sceptre in right hand, *rev.* PVL[]IRE ON: SAN, voided cross within beaded quatrefoil, a fleur in each angle springing from the quatrefoil (Mack 123 - Wulfre listed, but no Wulfre; N.881; S.1282), *the obverse mostly flat, reverse fine*

£250-300

PROVENANCE:

Purchased from Baldwin, June 1999



714

x714

Stephen (1135-54), Penny, 1.43g, Cross Pommée (Awbridge) type, Thetford, Hacun, crowned and bearded bust three-quarters left, holding sceptre in right hand, *rev.* HACV[N: O]: TEF[], voided cross within beaded quatrefoil, a fleur in each angle springing from the quatrefoil (Mack 126 - but only Gefrei listed; N.881; S.1282), *the moneyer not listed by Mack, nor by Elmore Jones in BNJ XXVIII, but three other specimens listed by Seaman, rather flat both sides, nearly very fine with good portrait, very rare*

£500-600

PROVENANCE:

Spink Numismatic Circular, April 1992, no. 2571

Elmore Jones, part 1, Glendining, 13 April 1983, lot 1110

Christie's, 14 June 1977, lot 328



715

x715

Stephen (1135-54), Penny, 1.06g, Cross Pommée (Awbridge) type, Wilton, William, []efne, crowned and bearded bust three-quarters left, holding sceptre in right hand, *rev.* [PIL]LEM: ON: PI[L], voided cross within beaded quatrefoil, a fleur in each angle springing from the quatrefoil (Mack 129b; N.881; S.1282), *reverse off-centre, good fine, very rare*

£400-500

PROVENANCE:

St James's auction 3, 3 October 2005, lot 170

Elmore Jones, part 2, Glendining, 10 April 1984, lot 1405

Carlyon-Britton, part 2, Sotheby, 20-24 November 1916, lot 1480



716



716 (x2)

Local and Irregular Issues

x716

Stephen (1135-54), Irregular Issue Penny, 1.36g, 'Watford' type reading PERERIC, Lincoln, Sigward, + [PE]RERIC M, crowned bust right holding lis topped sceptre, *rev.* + SIPARD[: ON: NICO:], cross moline, lis in angles (Mack 46; N.928; S.1279), *very fine*

£1,200-1,500

PROVENANCE:

Mossop, Glendining, 6 November 1991, lot 447

Prestwich hoard, Glendining, 13 November 1974, lot 218



717



718

x717

Stephen (1135-54), Penny, 1.11g, Cross Moline (Watford) type with defaced obverse die, Norwich, Edstan, crowned and diademed bust right, holding sceptre in right hand, defaced by thin long cross stretching to edge of coin, *rev.* + EDSTA[N : ON :] NOR:, cross moline, fleur in each angle (Mack 139; N.924; S.1283), *broken in two and repaired, very good*

£200-300

PROVENANCE:

Purchased from Baldwin, May 1992

x718

Stephen (1135-54), Penny, 0.83g, Cross Moline (Watford) type with defaced obverse die, Norwich, Eustace, crowned and diademed bust right, holding sceptre in right hand, defaced by thick long cross stretching to edge of coin, *rev.* + EV[S]TACE : ON : NOR, cross moline, fleur in each angle (Mack -; N.924; S.1283), *flan dishd, large chip at 3 o'clock, some verdigris, good fine*

£600-800

PROVENANCE:

Spink Numismatic Circular, September 1995, no. 4100



719



719 (x2)

x719

Stephen (1135-54), Penny, 1.17g, Eastern Variant of Cross Moline (Watford) type, Lincoln, Ailric, crowned bust right, holding sceptre, *rev.* SILR[ICVS O]N LIN, thick cross, lis in angles, annulet at centre, and annulets at cross ends, and in angles (Mack 169; N.904; S.1289), *irregular shaped flan, edge damaged below bust and a tiny edge split above, otherwise very fine with good detail both sides*

£1,200-1,500



720



721

x720

Stephen (1135-54), Penny, 1.00g, Southern Variant of Cross Moline (Watford) type, Oxford?, Hubert, crowned and diademed bust right, collar of annulets, *rev.* + H[VBER]T O [N..], cross moline, mullet in each angle (Mack 182; N.887; S.1293), *partly flat, slightly chipped, about fine, very rare*

£500-600

PROVENANCE:

DNW auction 67, 28 September 2005, lot 541

Found in Oxfordshire

x721

Stephen (1135-54), Penny, 1.01g, Southern Variant of Cross Moline (Watford) type, Southampton, Sanson, STIE..., the s on its side, crowned and diademed bust right, holding sceptre in right hand, collar of annulets, *rev.* + SAN[SON ON] ANT, voided cross moline, fleur in each angle (Mack 207; N.905; S.1295), *struck on a very small flan, obverse weak, with light scratches, very good/fine*

£800-1,000

PROVENANCE:

Spink Numismatic Circular, May 1994, no. 3214



722



722 (x2)

x722

Stephen (1135-54), Penny, 0.98g, Local Variant, Facing Bust/Cross and Fleurs type, Northampton, William, crowned and draped bust facing, collar of pellets, *rev.* + PILLEMI: ON: NOR, cross pattée, annulet at centre, inward facing fleurs in angles (BMC 176; Mack 69 same dies; N.896; S.1300), *toned, very fine, very rare, only four examples of this type of all mints recorded by Mack*

£2,500-3,000

PROVENANCE:

St James's auction 35, 9 February 2016, lot 23



723



724



725

x723

Stephen (1135-54), cut Halfpenny, 0.41g, Local Variant, Lozenge Fleury type, London?, facing bust, *rev.* + []OB[], lozenge with curved sides, a fleur at each angle and an annulet at each side (N.897; S.1301), *good/very good*

£100-120

PROVENANCE:

Pheatt, BDW, 21 March 1995, lot 714

x724

Stephen (1135-54), cut Halfpenny, 0.90g, North Eastern Variant of Cross Moline (Watford) type, Newcastle, Ioce, crowned and diademed bust right, holding sceptre in right hand, *rev.* + IO [], voided cross moline, large pellets at ends, fleur in each angle (Mack type B; N.908; S.1305), *very fine*

£250-300

PROVENANCE:

Mossop, Glendining, 6 November 1991, lot 448

Glendining, 17 November 1977, lot 564

Prestwich hoard

x725

Stephen (1135-54), Penny, 1.12g, Variant of Cross Moline (Watford) type, Uncrowned Bust type, Norwich, Alfric, s []NE:, uncrowned bust right, without collar of annulets, holding sceptre in right hand, *rev.* + []FRIC: ON: NO, voided cross moline, large pellets at ends, fleur in each angle (N-; S.1325), *cleaned, edge damage at 1 o'clock, otherwise very fine*

£600-800

PROVENANCE:

Purchased from M Vosper, November 2000



726



726 (x2)

x726

Stephen (1135-54), Penny, 1.18g, Variant ('Baronial Issue') of Cross Moline (Watford) type, blundered legends both sides, crowned and bust left, of crude style and holding 'pellet in annulet' topped sceptre in right hand, collar of annulets, *rev.* voided cross moline, small pellets at ends, fleur in each angle (Mack-; cf.N.884; S.1325), *very fine, extremely rare and unusual with a left facing bust*

£1,000-1,200

PROVENANCE:

Triton XV, 3 January 2012, lot 1905

Marshall Faintich collection, purchased from Andy Singer, April 2002

William Conte collection

Beauvais hoard From the same dies as the preceeding coin.

Marshall Faintich 'A few unusual coins of the Anarchy' in Spink Numismatic Circular, October 2005, p. 305, fig. 2 this coin.

'Blundered legends on irregular coins of the anarchy were usually a sign of a moneyer who did not want to show loyalty to either cause for fear of choosing incorrectly, and/or a moneyer who debased his coinage during the anarchy, and did not want the sub-standard coins to be traceable. The coin shown in figure 2 with blundered legends on both the obverse and the reverse, is one of a parcel of coins sold privately from the Beauvais hoard, and was most likely struck in northern England, or perhaps Scotland. Of particular interest is the modification of the sceptre with an annulet enclosing a pellet that replaces the royal fleur de lis. In addition the fleurs de lis on the crown are replaced by pellets. The annulet and pellets may suggest a bishopric origin. One other coin of this type is said to be known, and it was found in northern England.' From the same dies as the next lot.



727

x727

Stephen (1135-54), Penny, 1.06g, Variant ('Baronial Issue') of Cross Moline (Watford) type, blundered legends both sides, crowned and bust left, of crude style and holding 'pellet in annulet' topped sceptre in right hand, collar of annulets, *rev.* voided cross moline, small pellets at ends, fleur in each angle (Mack-; cf.N.884; S.1325), *chip at edge and cracked, otherwise fine, extremely rare and unusual with left facing bust*

£300-400

PROVENANCE:

St James's auction 3, 3 October 2005, lot 140

Spink auction 20, 31 March 1982, lot 95

Glendining, 24 November 1971, lot 154

'The lack of published details prompts speculation that this is a contemporary or baronial forgery of good weight.' From the same dies as the preceeding lot.

THE ANGEVIN PARTY



728



728 (x2)

The Empress Matilda

x728

Matilda (Dowager Empress. Countess of Anjou; in England 1139-48), Penny, 0.78g, Cross Moline type, Cardiff, Bricmar, crowned and draped bust right, holding sceptre in front, *rev.* [BR]ICMER : [CAIERDI], cross moline, lis in angles (Boon 51; N.936; S.1326 for type), *slightly creased and the edge turned up a little in places, about fine, very rare*

£2,000-2,500

PROVENANCE:

Stack's, 29 November 1990, lot 1407
Spink auction 20, 31 March 1982, lot 21
From the Coed-y-Wenallt hoard (1980)



729

729 (x2)

Henry of Anjou

x729

Henry of Anjou (c.1150), Penny, 1.14g, Malmesbury, Jordan, H:EN[]+, crowned bust right, lis headed sceptre in front, *rev.* [+I]ORDANVS ON MELMS[], cross moline, annulet at ends, inwards facing fleurs in angles (cf. Mack type 244; N.937; S.1327), a light crack through centre otherwise nearly very fine, extremely rare

£1,500-2,000

PROVENANCE:

Triton XV, 3 January 2012, lot 1909

Marshall Faintich collection, purchased from Mark Senior, September 2012

Noble Numismatics auction 70, 9 July 2002, lot 1573

William Conte collection, portion of collection purchased by CNG Marshall Faintich 'A Few Unusual Coins of the Anarchy', in Spink Numismatic Circular, October 2005, p. 306, fig. 5 this coin.

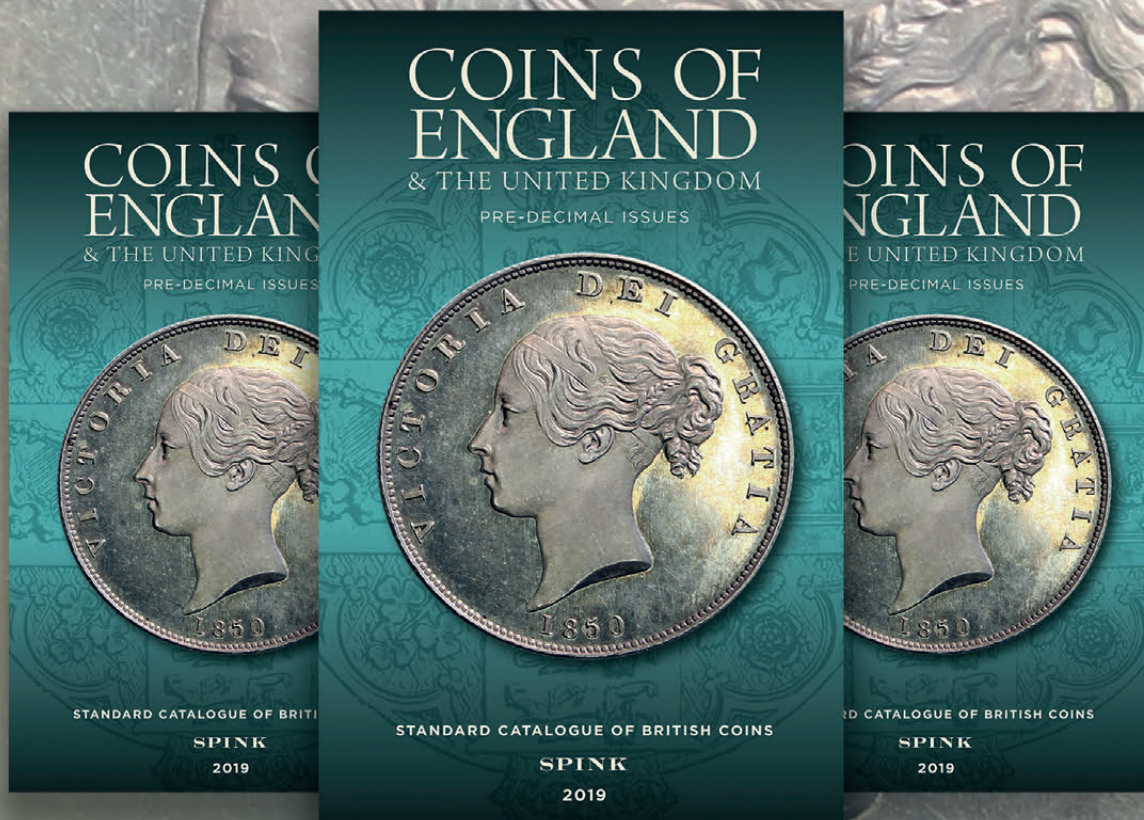
'Upon Matilda's arrival at Bristol in 1139, pennies were struck in her name, and beginning in 1142, in the name of her son, Henry of Anjou, who would later become Henry II of England. The penny in figure 5 was struck by the moneyer Jordan (IORDAN), And features a bust right with sceptre and a cross in front of the sceptre. The most probable obverse legend is H: ENRICVS.+ which would attribute this penny to Henry of Anjou, but Prince Henry of Scotland is also a possibility. The moneyer IORDAN is unknown for both Prince Henry and Henry of Anjou, and is only known as a moneyer from the mints of Bristol (for Matilda) and Norwich (for Stephen) for this type of coin. The mint name is difficult to read, but most probable reverse legends are IORDANVS ON MALMS (Malmesbury), or IORDANVS ON WELLIG... (or WELIG... or VELIG... Wallingford). The relationship to either mint may be problematic for a coin of Prince Henry. However, coins were struck for Henry of Anjou at Malmesbury, and at Wallingford a baronial coin of Brian FitzCount was struck, demonstrating limited activity during the period.'

THE END OF THE SALE

SPINK

LONDON
1666

COINS OF ENGLAND & THE UNITED KINGDOM 2019



THE ESSENTIAL CATALOGUE

In two volumes: pre-decimal and decimal

Fully revised and updated for 2019

AVAILABLE DECEMBER 2018

RRP £30

To place an order please visit our website, or contact the Spink Books Department

Tel: +44 (0)20 7563 4119 | Email: books@spink.com

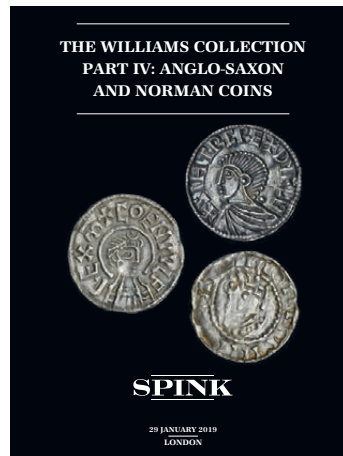
SPINK London | 69 Southampton Row | Bloomsbury | London | WC1B 4ET

WWW.SPINKBOOKS.COM

SPINK

LONDON
1666

69 Southampton Row, Bloomsbury,
London WC1B 4ET
tel: +44 (0)20 7563 4005
fax: +44 (0)20 7563 4037
email: auctionteam@spink.com



NAME _____

ADDRESS _____

POSTCODE _____

WRITTEN BIDS FORM

This form should be sent or faxed to the Spink auction office in advance of the sale. References for new clients should be supplied in good time to be taken up before the sale. Bids received later than one hour before the start of the sale may not be processed.

YOU CAN ALSO BID IN REAL TIME ON SPINK LIVE.
PLEASE DOWNLOAD SPINK LIVE APP FROM THE
APP STORE OR VISIT WWW.SPINK.COM,
REGISTER AND LOG INTO THE SALE.

SALE TITLE

**The Williams Collection Part IV:
Anglo-Saxon and Norman Coins**

DATE

**Tuesday 29 January 2019
at 2.00 p.m.**

CODE NAME

WILLIAMS PART IV

SALE NO.

19026

I request Spink, without legal obligations of any kind on its part, to bid on the following Lots up to the price given below. I understand that if my bid is successful the Purchase Price will be the sum of the final bid and Buyer's Premium as a percentage of the final bid, any VAT chargeable, also postage charge and a fee for paying by card. The Rate of Buyer's Premium is 20% of the final hammer price of each lot. I understand Spink will pursue me for payment for any successful bid. In addition, I understand and consent that Spink may share my personal details relating to the default with other auction houses and live bidding platforms to protect themselves from such defaults.

All bids shall be treated as offers made on the Terms and Conditions for Buyers printed in the catalogue. I also understand that Spink provides the service of executing bids on behalf of clients for the convenience of clients and that Spink will not be held responsible for failing to execute bids. If identical commission bids are received for the same Lot, the commission bid received first by Spink will take precedence. Please note that you will not be notified if there are higher written bids received.

PLEASE PRINT CLEARLY IN BLOCK LETTERS AND ENSURE THAT BIDS ARE IN STERLING

Lot Number (in numerical order)	Price Bid £ (excluding Buyer's Premium)

Lot Number (in numerical order)	Price Bid £ (excluding Buyer's Premium)

Lot Number (in numerical order)	Price Bid £ (excluding Buyer's Premium)

☐ Please hold my purchased lots for collection

TEL. HOME _____ TEL. OFFICE _____

FAX _____ E-MAIL _____

SIGNATURE _____ VAT NUMBER _____

☐ I agree to receive notifications about Spink auctions, news and events via email and direct mail

☐ I agree to receive marketing notifications related only to the following categories (*please select as appropriate*)

**Autographs / Banknotes / Bonds & Shares / Books / Coins / Comics / Handbags / Jewellery / Maps / Medals / Stamps / Watches /
Whiskies & Spirits / Wine / Corporate News & Events**

We will use the personal information you provide to us as set out in our privacy notice available at www.spink.com/privacy-policy

Continued ...

PLEASE PRINT CLEARLY IN BLOCK LETTERS AND ENSURE THAT BIDS ARE IN STERLING

[illegible][illegible][illegible]

All Corporate cards regardless of origin and Consumer debit and credit cards issued outside the EU are subject to a fee of 2%

CARD NO:														START DATE:				ISSUE NO:				SECURITY CODE:			
SIGNATURE													EXPIRY DATE				NAME (ON CREDIT CARD)								

TYPE OF CARD: CONSUMER DEBIT ☐ CONSUMER DEBIT ☐ CONSUMER CREDIT ☐ CONSUMER CREDIT ☐ ALL CORPORATE ☐
(UK OR EU) (NON EU) (UK OR EU) (NON EU)

☐ Please charge all purchases to my card ☐ Do not charge my card. (Spink will charge your card should you default on the payment)

BIDDING INCREMENTS

Bidding generally opens below the low estimate and advances in the following order although the auctioneer may vary the bidding increments during the course of the auction. The normal bidding increments are:

Up to £100	by £5	£3,000 to £6,000	£3,200-£3,500-£3,800-£4,000 etc.
£100 to £300	by £10	£6,000 to £10,000	by £500
£300 to £600	£320-£350-£380-£400 etc.	£10,000 to £20,000	by £1,000
£600 to £1,000	by £50	£20,000 and up	Auctioneer's discretion
£1,000 to £3,000	by £100		

VAT is chargeable on the Hammer price and the Buyer's Premium of daggered (†) and (L) lots at the standard rate (currently 20%), and on lots marked (x) at the reduced rate (currently 5% on the Hammer price and 20% on the Buyer's Premium). VAT on Margin Scheme lots (identified by the absence of any VAT symbol next to the lot number) is payable at 20% on the Buyer's Premium only.

REFERENCES REQUIRED FOR CLIENTS NOT YET KNOWN TO SPINK

TRADE REFERENCES

BANK REFERENCES

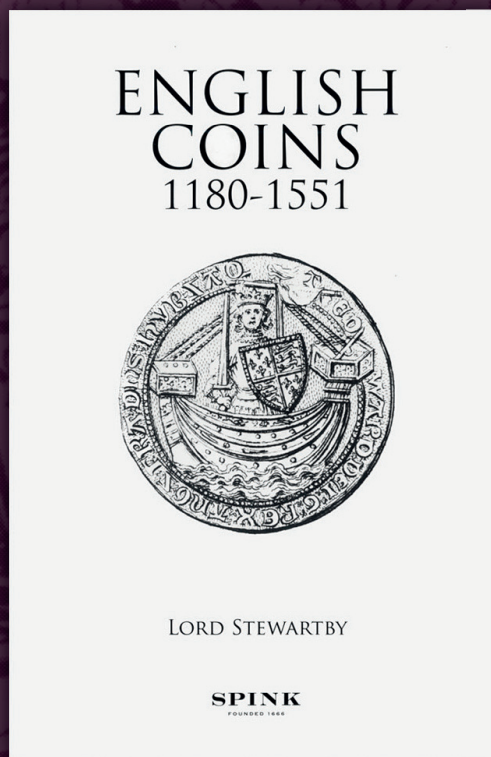
SPINK

LONDON
1666

ALSO AVAILABLE FROM SPINK

ENGLISH COINS 1180-1551

by Lord Stewartby



This book is an indispensable point of reference for students, curators, dealers and collectors. It is also a ready source of information for historians and others with a more general interest in English medieval coins.

Price: £45 + postage

To order your copy, please contact the Spink Books Department:

Tel: +44 (0)20 7563 4119 | Email: books@spink.com

SPINK LONDON | 69 Southampton Row | Bloomsbury | London | WC1B 4ET
LONDON | NEW YORK | HONG KONG | SINGAPORE | SWITZERLAND



#SPINK_AUCTIONS

WWW.SPINK.COM

WWW.SPINKBOOKS.COM

TERMS AND CONDITIONS FOR BUYERS

These conditions set out the terms on which we (**Spink and Son Limited** of 69 Southampton Row, Bloomsbury London WC1B 4ET (company no. 04369748)) contract with you (**Buyer**) either as agent on behalf of the Seller or as principal if we are the Seller. You should read these conditions carefully.

1 DEFINITIONS

The following definitions apply in these conditions:

Auctioneers' Margin Scheme	means a VAT margin scheme as defined by HM Revenue & Customs;
Buyer's Premium	means the charge payable by you as a percentage of the Hammer Price, at the rates set out in clause 5.1 below;
Certificate of Authenticity	means a certificate issued by an Expert Committee confirming the authenticity of a Lot;
Expert Committee	means a committee of experts to whom a Lot may be sent for an extension in accordance with clause 3.4.3;
Forgery	means a Lot constituting an imitation originally conceived and executed as a whole with a fraudulent intention to deceive as to authorship, origin, age, period, culture or source where the correct description as to such matters is not reflected by the description in the catalogue and which at the date of the auction had a value materially less than it would have had if it had been in accordance with the description in the catalogue. Accordingly, no Lot shall be capable of being a Forgery by reason of any damage and/or restoration work of any kind (including re-enamelling);
Hammer Price	means the amount of the highest bid accepted by the auctioneer in relation to a Lot;
Lot	means any item deposited with us for sale at auction and, in particular, the item or items described against any Lot number in any catalogue;
Reserve	the amount below which we agree with the Seller that the Lot cannot be sold;
Seller	means the owner of the Lot being sold by us;
Spink Group	Spink and Son Limited, our subsidiaries and associated companies.
VAT	value added tax chargeable under VAT and any similar replacement or additional tax; and
VAT Symbols	means the symbols detailing the VAT status of the Lot details of which are set out at the back of the catalogue.

2 SPINK'S ROLE AS AGENT

2.1 All sales undertaken by us either at auction or privately are undertaken either as agent on behalf of the Seller or from time to time, as principal if we are the owner of the Lot. Please note that even if we are acting as agent on behalf of the Seller rather than as principal, we may have a financial interest in the Lot.

2.2 The contract for the sale of the Lot will be between you and the Seller.

3 BEFORE THE SALE

3.1 Examination of goods

You are strongly advised to examine personally any goods in which you are interested, before the auction takes place. Condition reports are usually available on request. We provide no guarantee to you other than in relation to Forgeries, as set out in clause 5.13 of these Terms and Conditions.

3.2 Catalogue descriptions

3.2.1 Statements by us in the catalogue or condition report, or made orally or in writing elsewhere, regarding the authorship, origin, date, age, size, medium, attribution, genuineness, provenance, condition or estimated selling price of any Lot are merely statements of opinion, and are not to be relied on as statements of definitive fact. Catalogue and web illustrations are for guidance only, and should not be relied on either to determine the tone or colour of any item. No lot shall be rejected on the grounds of inaccurate reproduction. No lot illustrated in the catalogue and online shall be rejected on the grounds of cancellation, centring, margins, perforation or other characteristics apparent from the illustration. Estimates of the selling price should not be relied on as a statement that this price is either the price at which the Lot will sell or its value for any other purpose.

3.2.2 Many items are of an age or nature which precludes their being in perfect condition and some descriptions in the catalogue or given by way of condition report make reference to damage and/or restoration. We provide this information for guidance only and the absence of such a reference does not imply that an item is free from defects or restoration nor does a reference to particular defects imply the absence of any others.

3.2.3 Other than as set out in clause 5.13, and in the absence of fraud, neither the Seller nor we, nor any of our employees or agents, are responsible for the correctness of any statement as to the authorship, origin, date, age, attribution, genuineness or provenance of any Lot nor for any other errors of description or for any faults or defects in any Lot. Every person interested should exercise and rely on his own judgment as to such matters.

3.3 Your Responsibility

You are responsible for satisfying yourself as to the condition of the goods and the matters referred to in the catalogue description.

3.4 Extensions – Stamps only

3.4.1 If you wish to obtain an expert opinion or Certificate of Authenticity on any Lot (other than a mixed Lot or Lot containing undescribed stamps) you must notify us in writing not less than forty-eight hours before the time fixed for the commencement of the first session of the sale. If accepted by us, such request shall have the same effect as notice of an intention to question the genuineness or description of the Lot for the purposes of clause 5.13 (Refund in the case of Forgery) of these Terms and Conditions and the provisions of clause 5.13 (Refund in the case of Forgery) shall apply accordingly.

3.4.2 Notice of a request for an expert opinion or Certificate of Authenticity must give the reason why such opinion is required and specify the identity of your proposed expert which will be subject to agreement by us. We reserve the right, at our discretion, to refuse a request for an expert opinion or Certificate of Authenticity including (without limitation) where the proposed expert is not known to us.

3.4.3 If we accept a request for an expert opinion or Certificate of Authenticity we will submit the Lot to the Expert Committee. You acknowledge and accept that the length of time taken by an Expert Committee to reach an opinion will vary depending on the circumstances and in any event is beyond our control.

3.4.4 We will not accept a request for an extension on account of condition. Any Lot described in the catalogue as having faults or defects may not be returned even if an expert opinion or Certificate of Authenticity cites other faults or defects not included in the catalogue description, other than in the case of a Forgery.

3.4.5 Should Spink accept a request for an extension under the foregoing provisions of this paragraph, the fact may be stated by the Auctioneer from the rostrum prior to the sale of the Lot.

3.4.6 It should be noted that any stamp accompanied by a Certificate of Authenticity is sold on the basis of that Certificate only and not on the basis of any other description or warranty as to authenticity. No request for an extension will be accepted on such a stamp and the return of such a stamp will not be accepted.

3.4.7 If you receive any correspondence from the Expert Committee in relation to the Lot, including but not limited to a Certificate of Authenticity, you must provide us with copies of such correspondence no later than 7 days after you receive such correspondence.

4 AT THE SALE

4.1 Refusal of admission

Our sales usually take place on our own premises or premises over which we have control for the sale, and we have the right, exercisable at our complete discretion, to refuse admission to the premises or attendance at an auction.

4.2 Registration before bidding

All bidders must be registered either by completing a registration form or creating an account online. Please be aware that we usually require buyers to present identification before making a bid at auction, undergo a credit check or provide a trade reference.

If you have not bid successfully with Spink in the past, or you are registering with us for the first time, we reserve the right to require a deposit of up to 50% of the amount you intend to spend. Such deposit will be deducted from your invoice should you be successful. If you are unsuccessful at auction, your deposit will be returned by the same means it was paid to Spink.

Some lots may be designated, prior to the auction, as "Premium Lots", which means a deposit may be required before placing a bid on the item for sale. Information will be posted on our website in such an event.

4.3 Bidding as Principal

When making a bid (whether such bids are made in person or by way of telephone bids operated by Spink, commission or online or email bids), you will be deemed to be acting as principal and will be accepting personal liability, unless it has been agreed in writing, at the time of registration, that you are acting as agent on behalf of a third party buyer acceptable to us.

4.4 Commission Bids

If you give us instructions to bid on your behalf, by using the form provided in our catalogues or via our website, we shall use reasonable endeavours to do so, provided these instructions are received not later than 24 hours before the auction. If we receive commission bids on a particular Lot for identical amounts, and at auction these bids are the highest bids for the Lot, it will be sold to the person whose bid was received first. Commission bids are undertaken subject to other commitments at the time of the sale, and the conduct of the auction may be such that we are unable to bid as requested. Since this is undertaken as a free service to prospective buyers on the terms stated, we cannot accept liability for failure to make a commission bid. You should therefore always attend personally if you wish to be certain of bidding.

4.5 On-line Bidding

We offer internet services as a convenience to our clients. We will not be responsible for errors or failures to execute bids placed on the internet, including, without limitation, errors or failures caused by (i) a loss of internet connection by either party for whatever reason; (ii) a breakdown or problems with the online bidding software and/or (iii) a breakdown or problems with your internet connection, computer or system. Execution of on-line internet bids on www.spink.com and Spink Live is a free service undertaken subject to other commitments at the time of the auction and we do not accept liability for failing to execute an online internet bid or for errors or omissions in connection with this activity.

4.6 Telephone Bids

If you make arrangements with us not less than 24 hours before the sale, we shall use reasonable endeavours to contact you to enable you to participate in bidding by telephone, but in no circumstances will we be liable to either the Seller or you as a result of failure to do so.

4.7 Currency Converter

At some auctions, a currency converter will be operated, based on the one month forward rates of exchange quoted to us by Barclays Bank Plc or any other appropriate rate determined by us, at opening on the date of the auction. Bidding will take place in a currency determined by us, which is usually sterling for auctions held in London. The currency converter is not always reliable, and errors may occur beyond our control either in the accuracy of the Lot number displayed on the converter, or the foreign currency equivalent of sterling bids. We shall not be liable to you for any loss suffered as a result of you following the currency converter.

4.8 Video images

At some auctions there will be a video screen. Mistakes may occur in its operation, and we cannot be liable to you regarding either the correspondence of the image to the Lot being sold or the quality of the image as a reproduction of the original.

4.9 Bidding Increments

Bidding generally opens below the low estimate and advances in the following order although the auctioneer may vary the bidding increments during the course of the auction. The normal bidding increments are:

Up to £100	by £5
£100 to £300	by £10
£300 to £600	£320-£350-£380-£400 etc.
£600 to £1,000	by £50
£1,000 to £3,000	by £100
£3,000 to £6,000	£3,200-£3,500-£3,800-£4,000 etc.
£6,000 to £10,000	by £500
£10,000 to £20,000	by £1,000
£20,000 and up	Auctioneer's discretion

4.10 Bidding by Spink

4.10.1 We reserve the right to bid on Lots on the Seller's behalf up to the amount of the Reserve (if any), which will never be above the low estimate printed in the auction catalogue.

4.10.2 The Spink Group reserves the right to bid on and purchase Lots as principal.

4.11 The Auctioneer's Discretion

The auctioneer has the right at his absolute discretion to refuse any bid to advance the bidding in such manner as he may decide to withdraw or divide any Lot, to combine any two or more Lots and, in the case of error or dispute, to put an item up for bidding again.

4.12 Successful Bid

Subject to the auctioneer's discretion, the striking of his hammer marks the acceptance of the highest bid, provided always that such bid is higher than the Reserve (where applicable), and the conclusion of a contract for sale between you and the Seller.

4.13 After Sale Arrangements

If you enter into any private sale agreements for any Lot with the Seller within 60 days of the auction, we, as exclusive agents of the Seller reserve the right to charge you the applicable Buyer's Premium in accordance with these Terms and Conditions, and the Seller a commission in accordance with the terms of the Seller's agreement.

4.14 Return of Lot

4.14.1 Once your bid has been accepted for a Lot then you are liable to pay for that Lot in accordance with these Terms and Conditions. If there are any problems with a Lot then you must notify us within 7 days of receipt of the Lot, specifying the nature of the problem. We may then request that the Lot is returned to us for inspection. Save as set out in clause 5.13, the cancellation of the sale of any Lot and the refund of the corresponding purchase price is entirely at our sole discretion. We will not normally exercise that discretion if the Lot is not received by us in the same condition that it was in at the auction date.

4.14.2 No lot may be returned on account of condition if the condition was stated by a third party grading company (including, but not limited to PCGS, NGC, ANACS, ICG, PMG, WBG).

5 AFTER THE AUCTION

5.1 Buyer's Premium and other charges

In addition to the Hammer Price, you must pay us the Buyer's Premium at a rate of 20% of the final Hammer price of each lot, postage charge and a fee for paying by card.

5.2 Value Added Tax

Other than in respect of Zero-rated Lots (o) VAT is chargeable on the Hammer price and the Buyer's premium of daggered (†) and (Ω) lots at the standard rate (currently 20%), and on lots marked (x) at the reduced rate (currently 5% on the Hammer price and 20% on the Buyer's premium). VAT on Margin scheme lots (identified by the absence of any VAT symbol next to the lot number) is payable at 20% on the Buyer's premium only.

5.3 VAT Refunds

General

5.3.1 As we remain liable to account for VAT on all Lots unless they have been exported outside the EU within 3 months of the date of sale, you will generally be asked to deposit all amounts of VAT invoiced. However, if a Spink nominated shipper is instructed, then any refundable VAT will not be collected. In all other cases credits will be made when proof of export is provided. If you export the Lot yourself you must obtain shipping documents from the Shipping Department for which a charge of £50 will be made.

5.3.2 If you export the Lot you must return the valid proof of export certificate to us within 3 months of the date of sale. If you fail to return the proof of export certificate to us within such period and you have not already accounted to us for the VAT, you will be liable to us for the full amount of the VAT due on such Lot and we shall be entitled to invoice you for this sum.

5.3.3 To apply for a refund of any VAT paid, the proof of export certificate must be sent to our Shipping Department clearly marked 'VAT Refund' within 3 months of the date of sale. No payment will be made where the total amount of VAT refundable is less than £50 and Spink will charge £50 for each refund processed.

VAT Refunds - Buyers from within the EU

5.3.4 VAT refunds are available on the Hammer Price and Buyer's Premium of Daggered (†) and Investment Gold (g) Lots. You must certify that you are registered for VAT in another EU country and that the Lot is to be removed from the United Kingdom within 3 months of the date of sale.

5.3.5 Where an EU buyer purchases a Lot on which import VAT has been charged, no refund of VAT is available from us. It may be possible to apply directly for a refund on form VAT 65 to HM Revenue & Customs Overseas Repayment Section, Londonderry.

VAT Refunds - Buyers from outside the EU

5.3.6 Where a Lot is included within the Auctioneers' Margin Scheme and evidence of export from the EU is produced within 3 months of the date of sale, the VAT on Buyer's Premium may be refunded.

5.3.7 Where the Lot is marked as a Daggered (†) Lot the VAT charged on the Hammer Price may be refunded where evidence of export from the EU is produced within 3 months of the date of sale. A refund of VAT charged on the Buyer's Premium can also be made on receipt of proof of business as a collectibles dealer.

5.3.8 Where the Lot is marked as an Omega (Ω) Lot or an Import VAT (x) Lot and evidence of export from the EU is produced within 3 months of the date of sale, the VAT charged on both the Hammer Price and Buyer's Premium may be refunded. Where required, we can advise you on how to export such Lots as a specific form of export evidence is required. Where we advise you on the export of the Lots, please be aware that the ultimate responsibility in respect of obtaining a valid proof of export certificate will lie with you and we will not be responsible for your failure to obtain such certificate.

5.3.9 Lot marked as Investment Gold (g) is exempt from VAT on Hammer price. A refund of VAT charged on the Buyer's Premium can be made on receipt of proof of business as a collectibles dealer and where evidence of export from the EU is produced within 3 months of the date of sale.

5.4 Payment

5.4.1 You must provide us with your full name and permanent address and, if so requested, details of the bank from which any payments to us will be made. You must pay the full amount due (comprising the Hammer Price, the Buyer's Premium and any applicable VAT) within seven days after the date of the sale. This applies even if you wish to export the Lot and an export licence is (or may be) required.

5.4.2 You will not acquire title to the Lot until all amounts due have been paid in full. This includes instances where special arrangements were made for release of Lot prior to full settlement.

5.4.3 Payment should be made in sterling by one of the following methods:

- Direct bank transfer to our account details of which are set out on the invoice. All bank charges shall be met by you. Please ensure that your client number is noted on the transfer.
- By cheque or bank draft made payable to Spink and Son Ltd and sent to Spink at 69 Southampton Row, Bloomsbury, London WC1B 4ET. Please note that the processing charges for payments made by cheques or bank drafts drawn on a non-U.K bank shall be met by you. Please ensure that the remittance slip printed at the bottom of the invoice is enclosed with your payment.
- By Visa or Mastercard. All Corporate cards regardless of origin and Consumer debit and credit cards issued outside the EU are subject to a fee of 2%. For all card payments there are limits to the amounts we will accept depending on the type of card being used and whether or not the cardholder is present.

- 5.4.4 Payments should be made by the registered buyer and not by third parties, unless it has been agreed at the time of registration that you are acting as an agent on behalf of a third party.
- 5.5 Invoices**
Invoices may consist of one or more pages and will show: Zero rated Lots (o); no symbol Lots sold under the Auctioneers' Margin Scheme; Lots marked (g) special scheme Investment Gold; Daggered Lots (†), imported Lots marked (x) and (Ω), (c) Lots with Zero rated hammer for EU VAT registered buyers.
- 5.6 Collection of Purchases**
5.6.1 Unless specifically agreed to the contrary, we shall retain lots purchased until all amounts due to us, or to the Spink Group, have been paid in full. Buyers will be required to pay for their lots when they wish to take possession of the same, which must be within 7 days of the date of the sale, unless prior arrangements have been made with Spink. Without prior agreement, lots will not be released until cleared funds are received with regard to payments made by cheque.
5.6.2 Unless we notify you to the contrary, items retained by us will be covered in accordance with our policy which is available for inspection at our offices from the date of sale for a period of seven days or until the time of collection, whichever is sooner. After seven days or from the time of collection, whichever is the earlier, the Lot will be entirely at your risk.
5.6.3 Our policy will not cover and we are unable to accept responsibility for damage caused by woodworm, changes in atmospheric conditions or acts of terrorism.
- 5.7 Notification**
We are not able to notify successful bidders by telephone. While Invoices are sent out by email or mail after the auction we do not accept responsibility for notifying you of the result of your bid. You are requested to contact us by telephone or in person as soon as possible after the auction to obtain details of the outcome of your bids to avoid incurring charges for late payment.
- 5.8 Packing and handling**
5.8.1 We shall use all reasonable endeavours to take care when handling and packing a purchased Lot but remind you that after seven days or from the time of collection, whichever is sooner, the Lot is entirely at your risk. Our postage charges are set out at the back of the catalogue.
5.8.2 It is the responsibility of the Buyer to be aware of any Import Duties that may be incurred upon importation to the final destination. Spink will not accept return of any package in order to avoid these duties. The onus is also on the Buyer to be aware of any Customs import restrictions that prohibit the importation of certain collectibles. Spink will not accept return of the Lot(s) under these circumstances. Spink will not accept responsibility for Lot(s) seized or destroyed by Customs.
5.8.3 If the Buyer requires delivery of the Lot to an address other than the invoice address this will be carried out at the discretion of Spink.
- 5.9 Recommended packers and shippers**
If required our shipping department may arrange shipment as your agent. Although we may suggest carriers if specifically requested, our suggestions are made on the basis of our general experience of such parties in the past and we are not responsible to any person to whom we have made a recommendation for the acts or omissions of the third parties concerned.
- 5.10 Remedies for non-payment or failure to collect purchases**
5.10.1 If you fail to make payment within seven days of your stipulated payment date set out in your invoice, we shall be entitled to exercise one or more of the following rights or remedies:
5.10.1.1 to charge interest at the rate of 2% per month compound interest, calculated on a daily basis, from the date the full amount is due;
5.10.1.2 to set off against any amounts which the Spink Group may owe you in any other transaction the outstanding amount remaining unpaid by you;
5.10.1.3 we may keep hold of all or some of your Lots or other property in the possession of the Spink Group until you have paid all the amounts you owe us or the Spink Group, even if the unpaid amounts do not relate to those Lots or other property. Following fourteen days' notice to you of the amount outstanding and remaining unpaid, the Spink Group shall have the right to arrange the sale of such Lots or other property. We shall apply the proceeds in discharge of the amount outstanding to us or the Spink Group, and pay any balance to you;
5.10.1.4 where several amounts are owed by you to the Spink Group in respect of different transactions, to apply any amount paid to discharge any amount owed in respect of any particular transaction, whether or not you so direct;
5.10.1.5 to reject at any future auction any bids made by you or on your behalf or obtain a deposit from you before accepting any bids.
5.10.2 If you fail to make payment within thirty-five days, we shall in addition be entitled to:
5.10.2.1 to cancel the sale of the Lot or any other item sold to you at the same or any other auction;
5.10.2.2 to arrange a resale of the Lot, publicly or privately, and, if this results in a lower price being obtained, claim the balance from you together with all reasonable costs including a 20% seller's commission, expenses, damages, legal fees, commissions and premiums of whatever kind associated with both sales or otherwise, incurred in connection with your failure to make payment;
5.10.2.3 when reselling the Lot, place a notice in our catalogue stating that you successfully purchased the Lot at auction but have subsequently failed to pay the Hammer Price of the Lot; or
5.10.2.4 take any other appropriate action as we deem fit.
5.10.3 If you fail to collect within fourteen days after the sale, whether or not payment has been made, you will be required
5.10.3.1 to pay a storage charge of £2 per item per day plus any additional handling cost that may apply.
5.10.3.2 you will not be entitled to collect the Lot until all outstanding charges are met, together with payment of all other amounts due to us.
- 5.11 Use of Default Information**
If you fail to make payment for a Lot in accordance with these Terms and Conditions:
5.11.1 we reserve the right to refuse you the right to make bids for any future auction irrespective of whether previous defaults have been settled; and
5.11.2 you acknowledge that we may (as necessary for our legitimate interests those of other auctioneers and live bidding platforms in referencing customers and avoiding customer defaults) disclose details of such default to other auctioneers and live bidding platforms, which will include your name, address, nature of the default and the date of the default.
Auctioneers or live bidding platforms who receive details of the default may rely on such information when deciding whether to enter into a transaction with you in the future.
- 5.12 Export Licence**
5.12.1 If required we can, at our discretion, advise you on the detailed provisions of the export licensing regulations. Where we advise you in relation to export licensing regulations the ultimate responsibility in respect of any export will lie with you and we will not be responsible for your failure to apply for any necessary licences.
5.12.2 If the Lot is going to be hand carried by you, you may be required to produce a valid export licence to us or sign a waiver document stating that a licence will be applied for.
5.12.3 You should always check whether an export licence is required before exporting. Export licences are usually obtained within two or three weeks but delays can occur.
5.12.4 Unless otherwise agreed by us in writing, the fact that you wish to apply for an export licence does not affect your obligation to make payment within seven days nor our right to charge interest on late payment.
5.12.5 If you request that we apply for an export licence on your behalf, we shall be entitled to recover from you our disbursements and out of pocket expenses in relation to such application, together with any relevant VAT.
5.12.6 We will not be obliged to rescind a sale nor to refund any interest or other expenses incurred by you where payment is made by you despite the fact that an export licence is required.
- 5.13 Refund in the case of Forgery**
5.13.1 A sale will be cancelled, and the amount paid refunded to you if a Lot (other than a miscellaneous item not described in the catalogue) sold by us proves to have been a Forgery. We shall not however be obliged to refund any amounts if either (a) the catalogue description or saleroom notice at the auction date corresponded to the generally accepted opinion of scholars or experts at that time, or fairly indicated that there was a conflict of opinions, or (b) it can be demonstrated that the Lot is a Forgery only by means of either a scientific process not generally accepted for use until after publication of the catalogue or a process which at the date of the auction was unreasonably expensive or impracticable or likely to have caused damage to the Lot. Furthermore, you should note that this refund can be obtained only if the following conditions are met:
5.13.1.1 you must notify us in writing, within seven days of the receipt of the Lot(s), that in your view the Lot concerned is a Forgery;
5.13.1.2 you must then return the item to us within fourteen days from receipt of the Lot(s), in the same condition as at the auction date; and
5.13.1.3 as soon as possible following return of the Lot, you must produce evidence satisfactory to us that the Lot is a Forgery and that you are able to transfer good title to us, free from any third party claims.
5.13.1.4 you must provide to us all evidence obtained by you that a Lot is a Forgery no later than 7 days after you receive such evidence.
5.13.2 In no circumstances shall we be required to pay you any more than the amount paid by you for the Lot concerned and you shall have no claim for interest.
5.13.3 The benefit of this guarantee is not capable of being transferred, and is solely for the benefit of the person to whom the original invoice was made out by us in respect of the Lot when sold and who, since the sale, has remained the owner of the Lot without disposing of any interest in it to any third party.
5.13.4 We shall be entitled to rely on any scientific or other process to establish that the Lot is not a Forgery, whether or not such process was used or in use at the date of the auction.
- 6 LIABILITY**
Nothing in these Terms and Conditions limits or excludes our liability for:
6.1 death or personal injury resulting from negligence; or
6.2 any damage or liability incurred by you as a result of our fraud or fraudulent misrepresentation.

7 USE OF YOUR PERSONAL INFORMATION

- 7.1 We will use the personal information you provide to us as set out in our privacy notice (available at <https://spink.com/privacy-policy>) and in particular to:
- 7.1.1 process the bids you make on Lots (whether successful or otherwise) and other auction related services we provide;
 - 7.1.2 process your payment relating to a successful purchase of a Lot;
 - 7.1.3 arrange for delivery of any Lot you purchase, which will include passing your details to shipping providers and, on overseas deliveries, to customs where they make enquiries regarding the Lot;
 - 7.1.4 inform you about similar products or services that we provide, but you may stop receiving these at any time by contacting us.
- 7.2 In accordance with clause 4.2, we may pass your information to credit reference agencies in order to obtain credit checks from them, and they may keep a record of any search that they do.
- 7.3 In accordance with clause 5.11, where you default on making payment for a Lot in accordance with these terms and conditions we may disclose details of such default to other auctioneers and live bidding platforms.
- 7.4 We are also working closely with third parties (including, for example, other auctioneers and live bidding platforms) and may receive information about you from them.
- 7.5 Where you provide us with personal information about other individuals, you must ensure that your provision of that information is compliant with applicable data protection law.

8 COPYRIGHT

- 8.1 We shall have the right (on a non-exclusive basis) to photograph, video or otherwise produce an image of the Lot. All rights in such an image will belong to us, and we shall have the right to use it in whatever way we see fit.
- 8.2 The copyright in all images, illustrations and written material relating to a Lot is and shall remain at all times our property and we shall have the right to use it in whatever way we see fit. You shall not use or allow anyone else to use such images, illustrations or written material without our prior written consent.

9 VAT

You shall give us all relevant information about your VAT status and that of the Lot to ensure that the correct information is printed in the catalogues. Once printed, the information cannot be changed. If we incur any unforeseen cost or expense as a result of the information being incorrect, you will reimburse to us on demand the full amount incurred.

10 NOTICES

All notices given under these Terms and Conditions may be served personally, sent by 1st class post, or faxed to the address given to the sender by the other party. Any notice sent by post will be deemed to have been received on the second working day after posting or, if the addressee is overseas, on the fifth working day after posting. Any notice sent by fax or served personally will be deemed to be delivered on the first working day following despatch.

11 ADDITIONAL PROVISIONS

The following provisions of this clause 10 shall apply only if you are acting for the purposes of your business.

11.1 Limitation of Liability

Subject to clause 6, we shall not be liable, whether in tort (including for negligence) or breach of statutory duty, contract, misrepresentation or otherwise for any:

- 11.1.1 loss of profits, loss of business, depletion of goodwill and/or similar losses, loss of anticipated savings, loss of goods, loss of contract, loss of use, loss of corruption of data or information; or
- 11.1.2 any special, indirect, consequential or pure economic loss, costs, damages, charges or expenses.

11.2 Severability

If any part of these Terms and Condition is found by any court to be invalid, illegal or unenforceable, that part may be discounted and the rest of the conditions shall continue to be valid and enforceable to the fullest extent permitted by law.

11.3 Force majeure

We shall have no liability to you if we are prevented from, or delayed in performing, our obligations under these Terms and Conditions or from carrying on our business by acts, events, omissions or accidents beyond our reasonable control, including (without limitation) strikes, lock-outs or other industrial disputes (whether involving our workforce or the workforce of any other party), failure of a utility service or transport network, act of God, war, riot, civil commotion, malicious damage, compliance with any law or governmental order, rule, regulation or direction, accident, breakdown of plant or machinery, fire, flood, storm or default of suppliers or subcontractors.

11.4 Waiver

11.4.1 A waiver of any right under these Terms and Conditions is only effective if it is in writing and it applies only to the circumstances for which it is given. No failure or delay by a party in exercising any right or remedy under these Terms and Conditions or by law shall constitute a waiver of that (or any other) right or remedy, nor preclude or restrict its further exercise. No single or partial exercise of such right or remedy shall preclude or restrict the further exercise of that (or any other) right or remedy.

11.4.2 Unless specifically provided otherwise, rights arising under these Terms and Conditions are cumulative and do not exclude rights provided by law.

11.5 Law and Jurisdiction

- 11.5.1 These Terms and Conditions and any dispute or claim arising out of or in connection with them or their subject matter, shall be governed by, and construed in accordance with, the law of England and Wales.
- 11.5.2 The parties irrevocably agree that the courts of England and Wales shall have exclusive jurisdiction to settle any dispute or claim that arises out of, or in connection with, Terms and Conditions or their subject matter.

Postal Charges

Prices for all items including postage and packaging

Invoice Value	UK	EU	Rest of the World
Up to £1,500	£12	£18	£25
Up to £10,000	£20	£40	£50
Above £10,001	£30	£60	£75

Shipments of more than 2kg or volumetric measurement of more than 2kg have to be sent by courier. Certain countries may incur extra charge when courier services are required by our insurance policy. For lots sent by courier please contact Auctionteam@spink.com for calculation of any further relevant cost in addition to the above charges.

Value Added Tax (VAT)

Charging of (VAT) at Auction

The information shown on this page sets out the way in which Spink intends to account for VAT.

i. Auctioneers' Margin Scheme

1. Where possible, we will offer Lots for sale under the Auctioneers' Margin Scheme. Such Lots can be identified by the absence of any VAT symbol next to the Lot number in the catalogue and will not be subject to VAT on the Hammer Price.
2. Where Lots are sold using the Auctioneers' Margin Scheme to UK VAT-registered businesses, the VAT on Buyers' Premium is not recoverable as input tax. Upon request on sale day, we will issue invoices that show VAT separately on both the Hammer Price and the Buyer's Premium. This will enable VAT-registered businesses to recover the VAT charged as input tax, subject to the normal rules for recovering input tax.

ii. Zero-Rated Lots

Limited Categories of goods, such as books, are Zero-rated (o) for VAT in the United Kingdom. Such Lots are offered under the Auctioneers' Margin Scheme. In these circumstances no VAT will be added to the Buyer's premium.

iii. Daggered Lots

Lots which are Daggered (†) in the catalogue are subject to VAT at 20% on both the Hammer Price and the Buyer's Premium.

iv. Imported and Omega Lots

Lots which are marked (x) in the catalogue are subject to VAT at 5% on the Hammer price plus 20% on the Buyer's premium. Lots which bear the Omega symbol (Ω) are subject to VAT at 20% on the Hammer Price and on the Buyer's Premium. This VAT is payable on items imported from outside the EU. In these cases we have used a temporary importation procedure, which in effect means that the point of importation is deferred until the Lot has been sold. At this point the Buyer is treated as the importer and is liable to pay the import VAT due. We will collect the VAT from you and pay it to HM Customs and Excise on your behalf.

v. Investment Gold Lots

Lots marked (g) in the catalogue are exempt from VAT on the Hammer Price and are subject to VAT at 20% on the Buyer's Premium. A refund of VAT charged on the Buyer's Premium can also be made on receipt of proof of business as a collectibles dealer outside of the EU.

SPINK

LONDON

1666

SALE CALENDAR 2019

STAMPS

18 January	The Lam Man Yin Collection of Small Dragons, Dowagers and 1897 Surcharges	Hong Kong	19008
19 January	The Treaty Ports of the Shanghai Postal System - Part I	Hong Kong	19009
20 January	Fine Stamps and Covers of China and Hong Kong	Hong Kong	CSS37
20 January	The Philatelic Timed Auction	Hong Kong	CSS38
22/23 January	The Philatelic Collectors' Series Sale	London	19010
24 January	The 'Pegasus' Collection of Important Classic New Zealand	London	19012
24 January	The 'Lionheart' Collection of Great Britain and British Empire - Part IX	London	19011
30/31 January	The Philatelic Collector's Series Sale	New York	168
24 April	The Arthur Gray Collection of Australia Queen Elizabeth II Decimal Issues	London	19013
25 April	The Philatelic Collectors' Series Sale	London	19015

COINS

4/5/6 January	Banknotes, Bonds & Shares and Coins of China and Hong Kong	Hong Kong	CSS36
13 January	The Numismatic Collector's Series Sale at Grand Hyatt, NY INC	New York	344
14/15/16 January	The Numismatic Collector's Series Sale	New York	344
28/29 January	Ancient British and Foreign Coins and Commemorative Medals	London	19025
29 January	The Williams Collection Part IV: Anglo-Saxon and Norman Coins	London	19026
26/27/28 March	The Numismatic Collector's Series Sale	Hong Kong	CSS39
27/28 March	Ancient, British and Foreign Coins and Commemorative Medals	London	19004
29 March	The "Esseight" Collection of World Coins and the Penny Timed Auction	London	19020
9/10 April	The Numismatic Collector's Series Sale	New York	345

BANKNOTES

4/5/6 January	Banknotes, Bonds & Shares and Coins of China and Hong Kong	Hong Kong	CSS36
11 January	World Banknotes at Grand Hyatt, NY INC	New York	343
14/15/16 January	The Numismatic Collector's Series Sale	New York	344
26/27/28 March	The Numismatic Collector's Series Sale	Hong Kong	CSS39
9/10 April	The Numismatic Collector's Series Sale	New York	345
16/17/18 April	World Banknotes	London	19023

MEDALS

14/15/16 January	The Numismatic Collector's Series Sale	New York	344
26/27/28 March	The Numismatic Collector's Series Sale	Hong Kong	CSS39
9/10 April	The Numismatic Collector's Series Sale	New York	345
10/11 April	Orders, Decorations and Medals	London	19001

BONDS & SHARES

4/5/6 January	Banknotes, Bonds & Shares and Coins of China and Hong Kong	Hong Kong	CSS36
14/15/16 January	The Numismatic Collector's Series Sale	New York	344
25 January	Bonds and Share Certificates of the World Timed Auction	London	19016
26/27/28 March	The Numismatic Collector's Series Sale	Hong Kong	CSS39
9/10 April	The Numismatic Collector's Series Sale	New York	345

HISTORICAL DOCUMENTS

July	Historical Documents, Postal History and Autographs	London	19022
------	---	--------	-------

WINE & SPIRITS

18 January	An Evening of Great Whiskies and Rums	Hong Kong	SFW30
8 May	An Evening of Great Whiskies and Rums	Hong Kong	SFW31

HANDBAGS

27 November	Handbags and Accessories	Hong Kong	SHA02
-------------	--------------------------	-----------	-------

The above sale dates are subject to change

Spink offers the following services:

- VALUATIONS FOR INSURANCE AND PROBATE FOR INDIVIDUAL ITEMS OR WHOLE COLLECTIONS —
— SALES ON A COMMISSION BASIS EITHER OF INDIVIDUAL PIECES OR WHOLE COLLECTIONS —



493



603



634



703



705



716



722



726



728



729



£25



BY APPOINTMENT TO
HIS MAJESTY THE QUEEN
MEDALISTS & ENGRAVERS
SINCE 1801, LONDON



BY APPOINTMENT TO
HIS MAJESTY THE KING
MEDALISTS & ENGRAVERS
SINCE 1801, LONDON

SPINK

LONDON
1666

STAMPS COINS BANKNOTES MEDALS BONDS & SHARES AUTOGRAPHS BOOKS
WINE & SPIRITS HANDBAGS COLLECTIONS ADVISORY SERVICES SPECIAL COMMISSIONS

69 Southampton Row, Bloomsbury, London WC1B 4ET
www.spink.com